

FRAMEWORK

A STUDENT BAR !?



Our group project, Framework, is a collaborative redesign of our current student bar. Our focus was to create a space that resonated with students, a solution to the decreasing popularity of student bars across the country. We wanted to turn a space which is currently underused and overpriced into a hub of activity with student-led workshops during the day and a bar and live music venue at night.

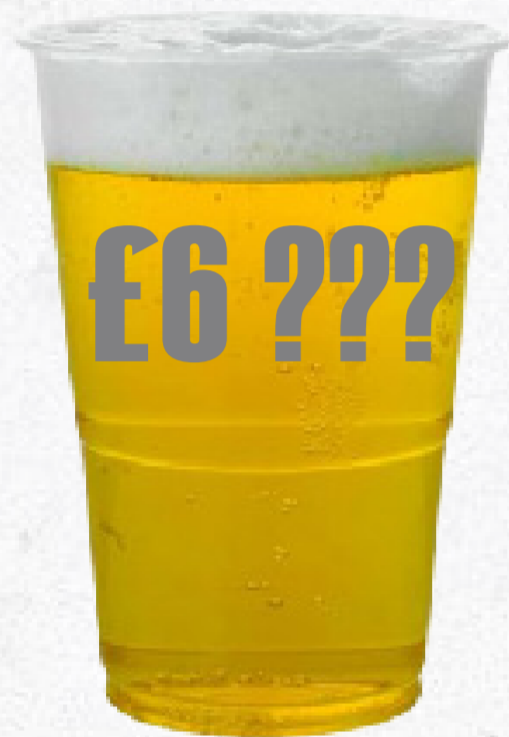
‘Student bars will no longer exist by 2030’

ARAMARK (OPERATOR OF MULTIPLE UK STUDENT BARS)

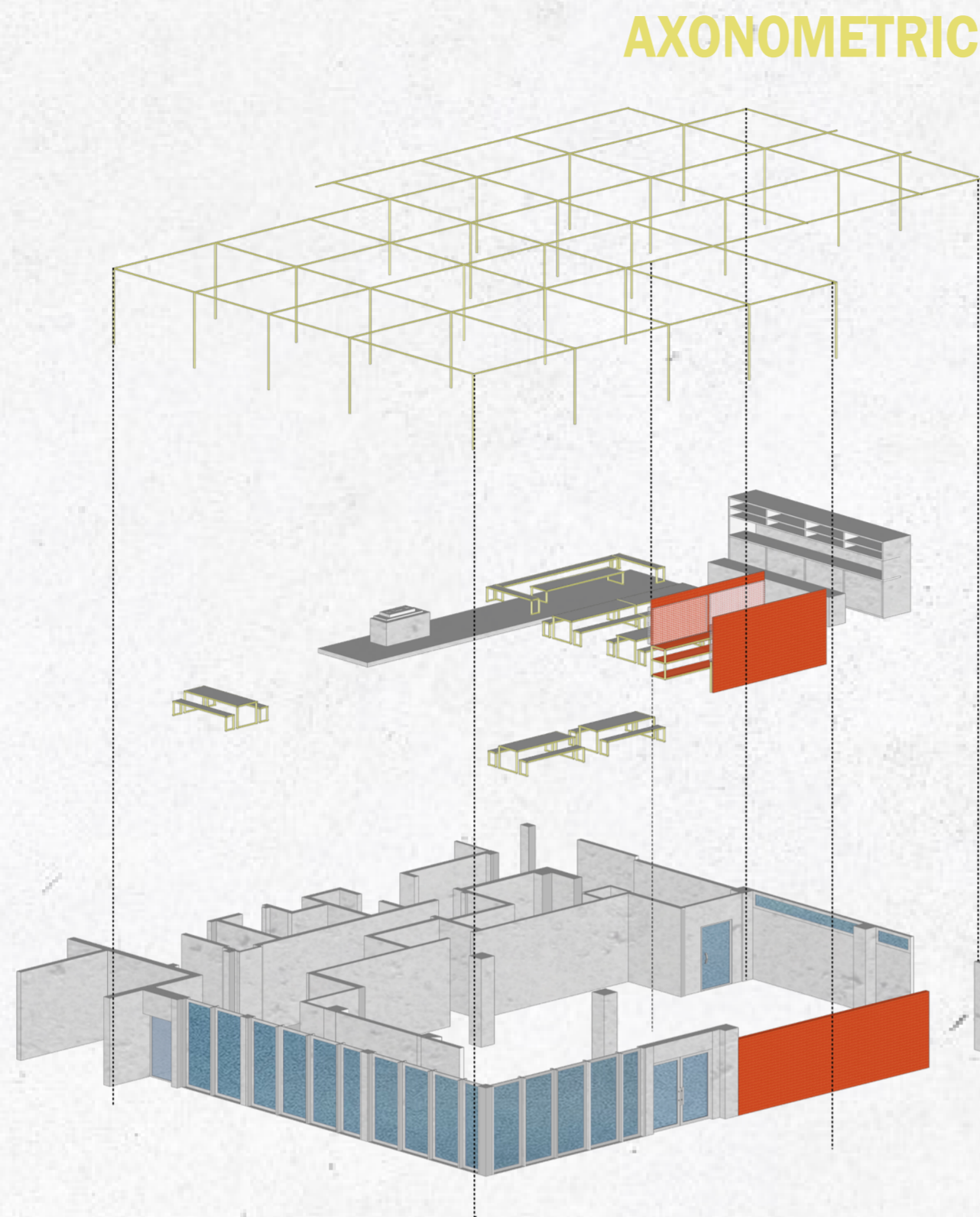
FRAMEWORK

A STUDENT BAR !?

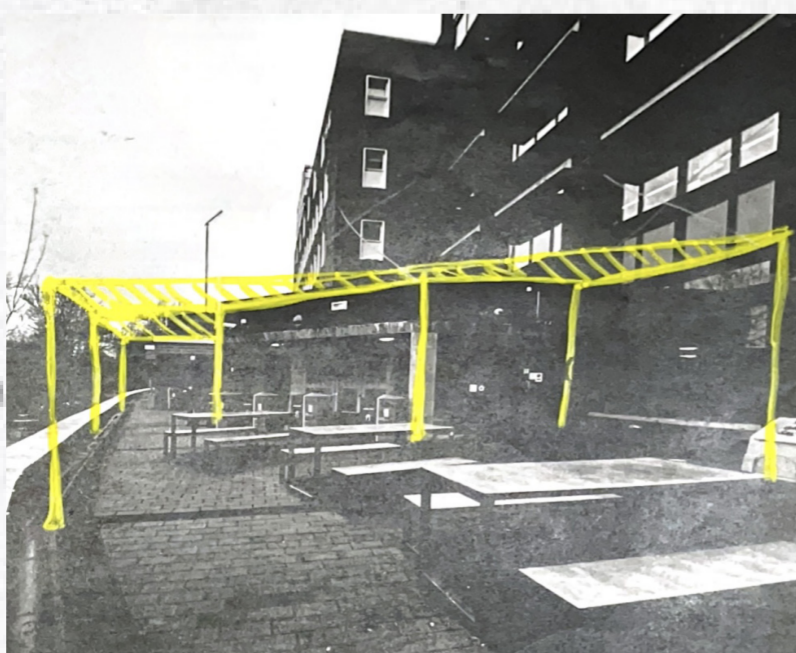
Currently, the existing student bar is minimally used. Located in the centre of the art school, it should be busy, but due to its limited opening hours (Wednesday-Friday from 4 pm) and overpriced drinks, it's deterring students. Our proposal intends to maximize the use of the space and rebrand the bar into a welcoming place for students.



MEASURING THE CURRENT STUDENT BAR

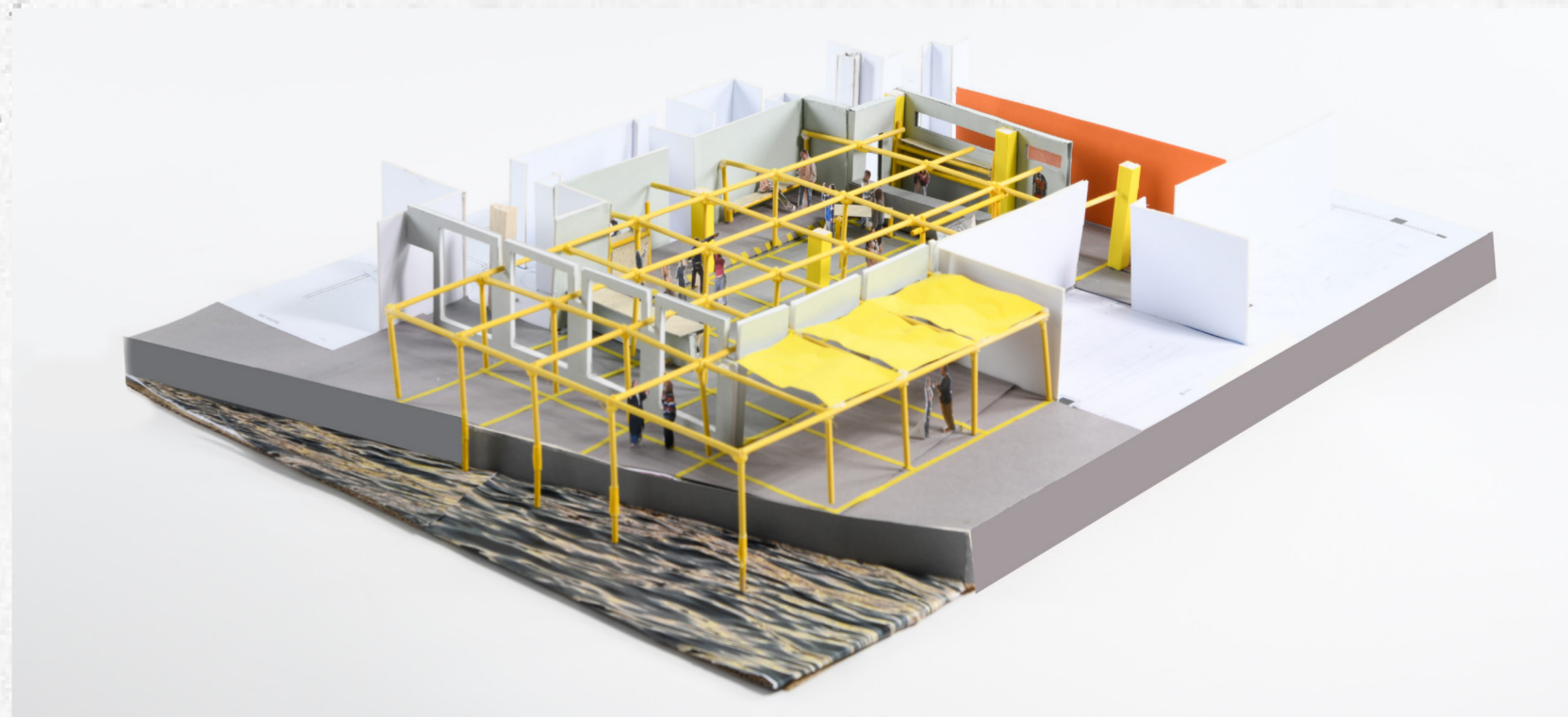
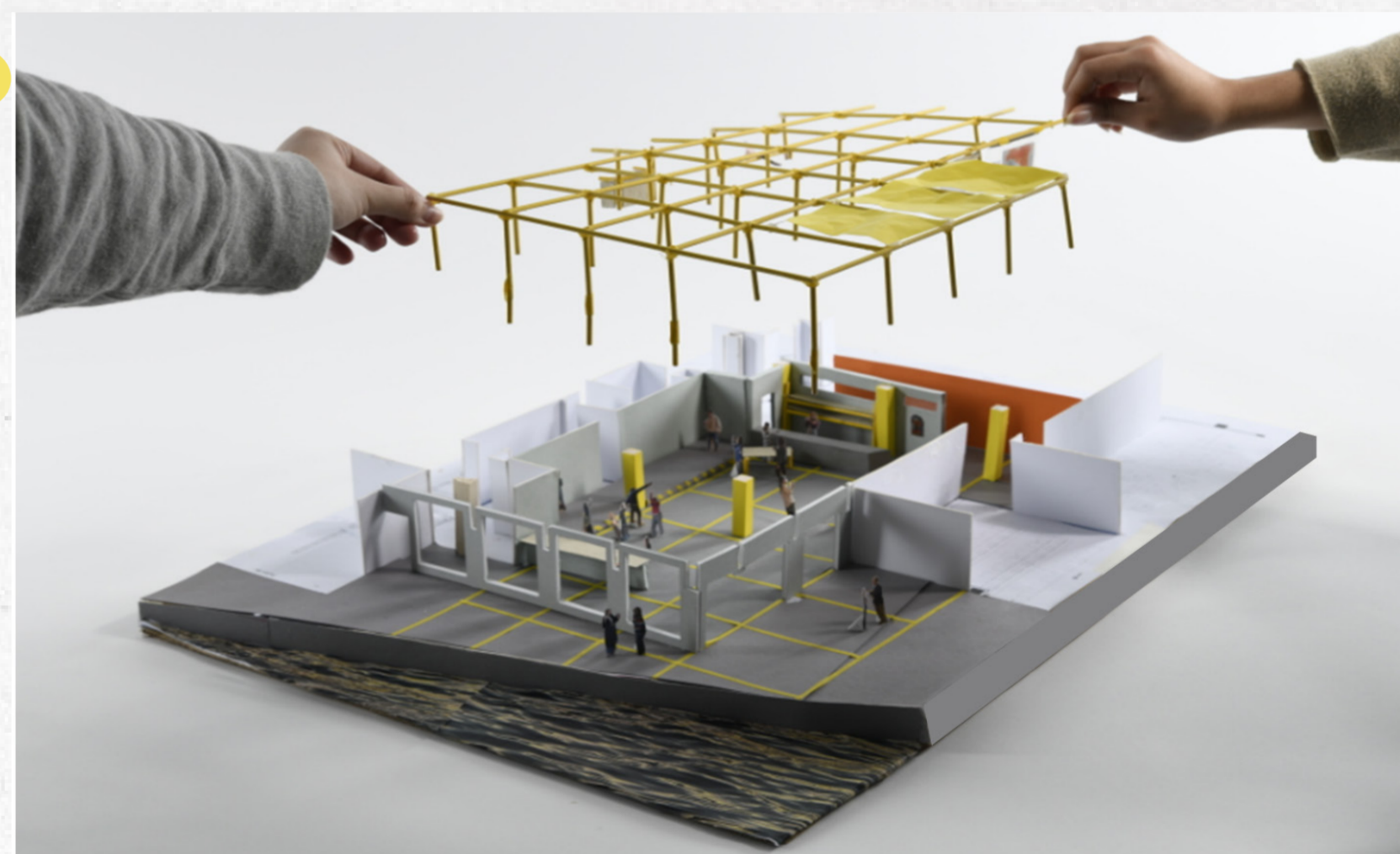
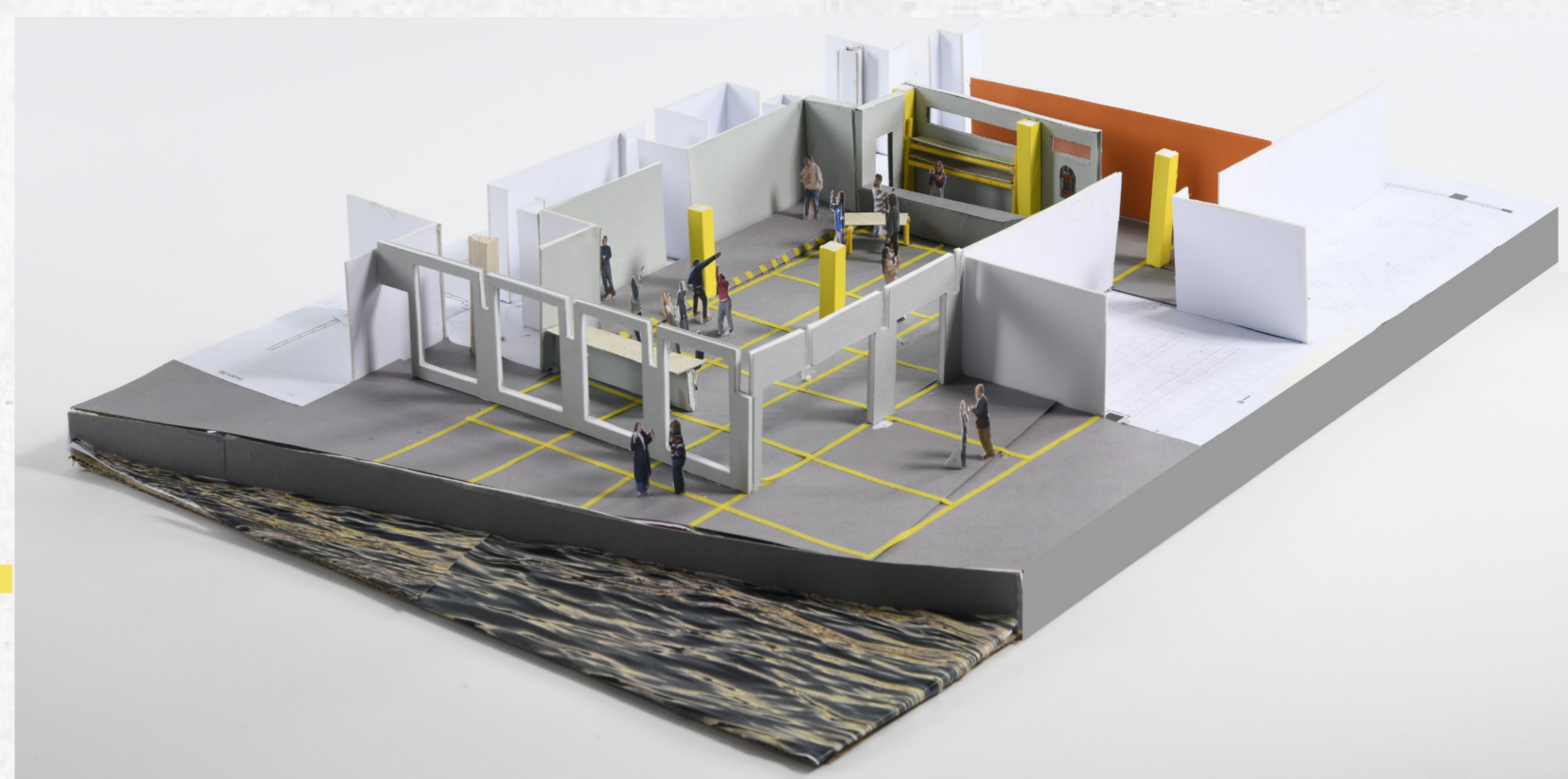


AXONOMETRIC



Our key design move was the framework that starts in the interior and extends out to the exterior. The reasoning behind this is that we wanted to create an outdoor shelter to expand the bar's use to the outdoors, a feature that the existing bar didn't have. We wanted the furniture and archive to be a continuation of this, made also out of scaffolding, allowing it to be easily deconstructed/reconstructed, allowing the bar to be adaptable for its different uses.

OUR MODEL



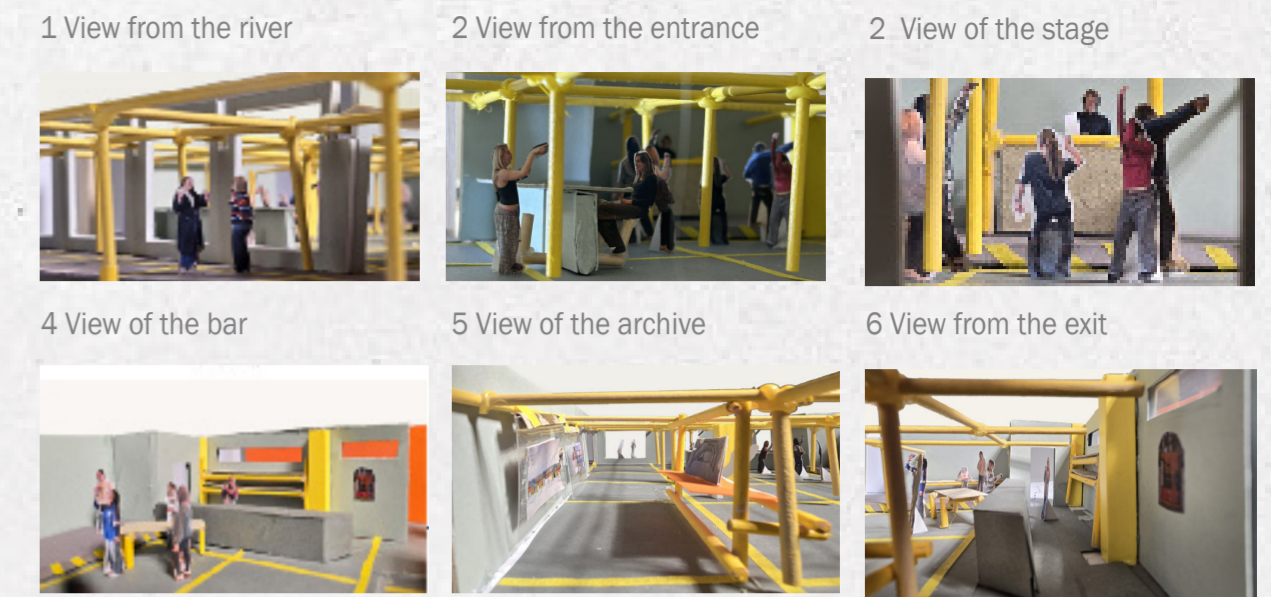
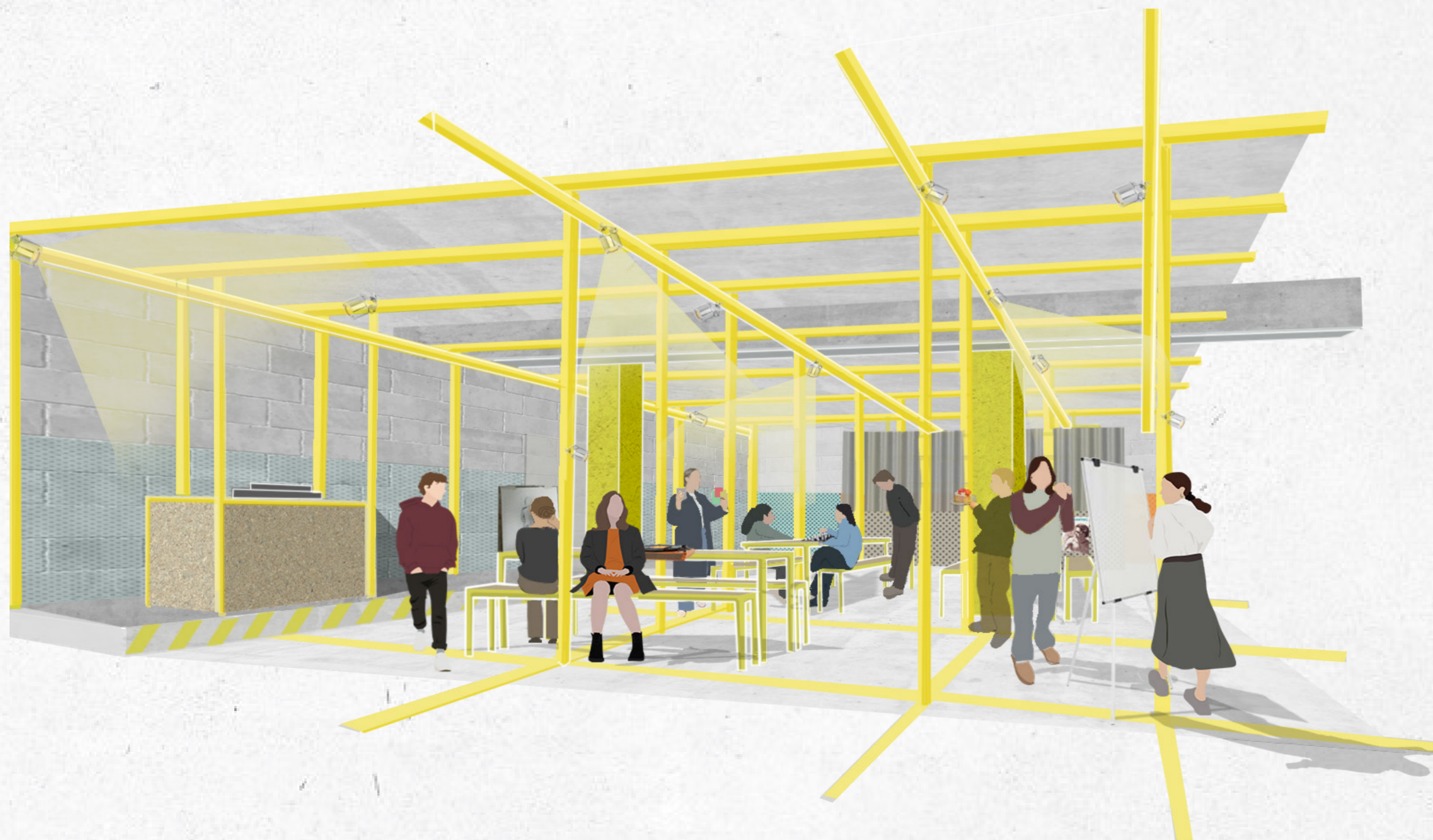
FRAMEWORK A STUDENT BAR!?

A key focus of our design was adaptability, responding to the limited opening hours and minimal use of the current bar space. We wanted to create a setting that could support a hub for student-led craft and workshop events during the daytime, requiring additional tables and seating. But also a place that is able to transition into a bar and live music venue in the evening, where open floor space is essential. Our modular design allows for easy reconfiguration to support this.

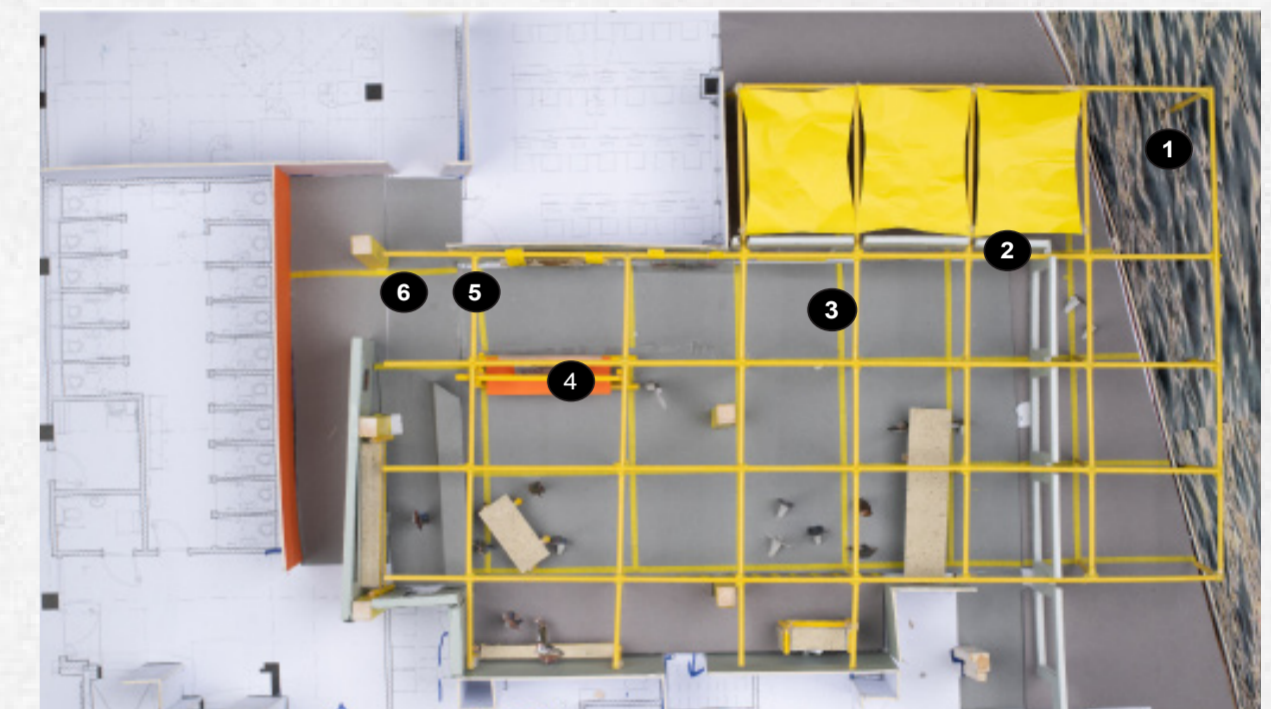
TIMELINE OF ACTIVITIES



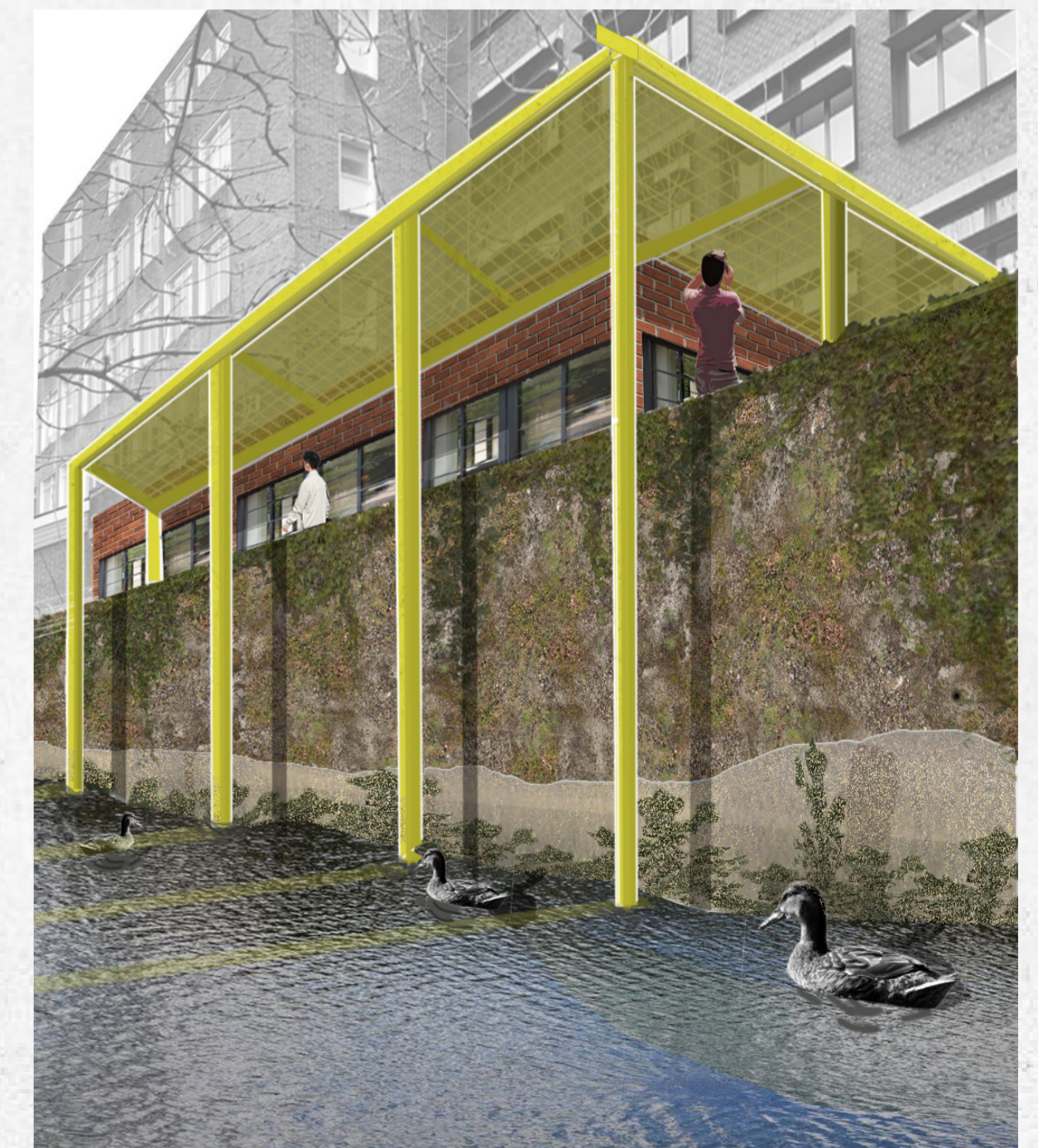
VISUALISATION- DAYTIME



VISITOR JOURNEY



A DUCK'S PERSPECTIVE

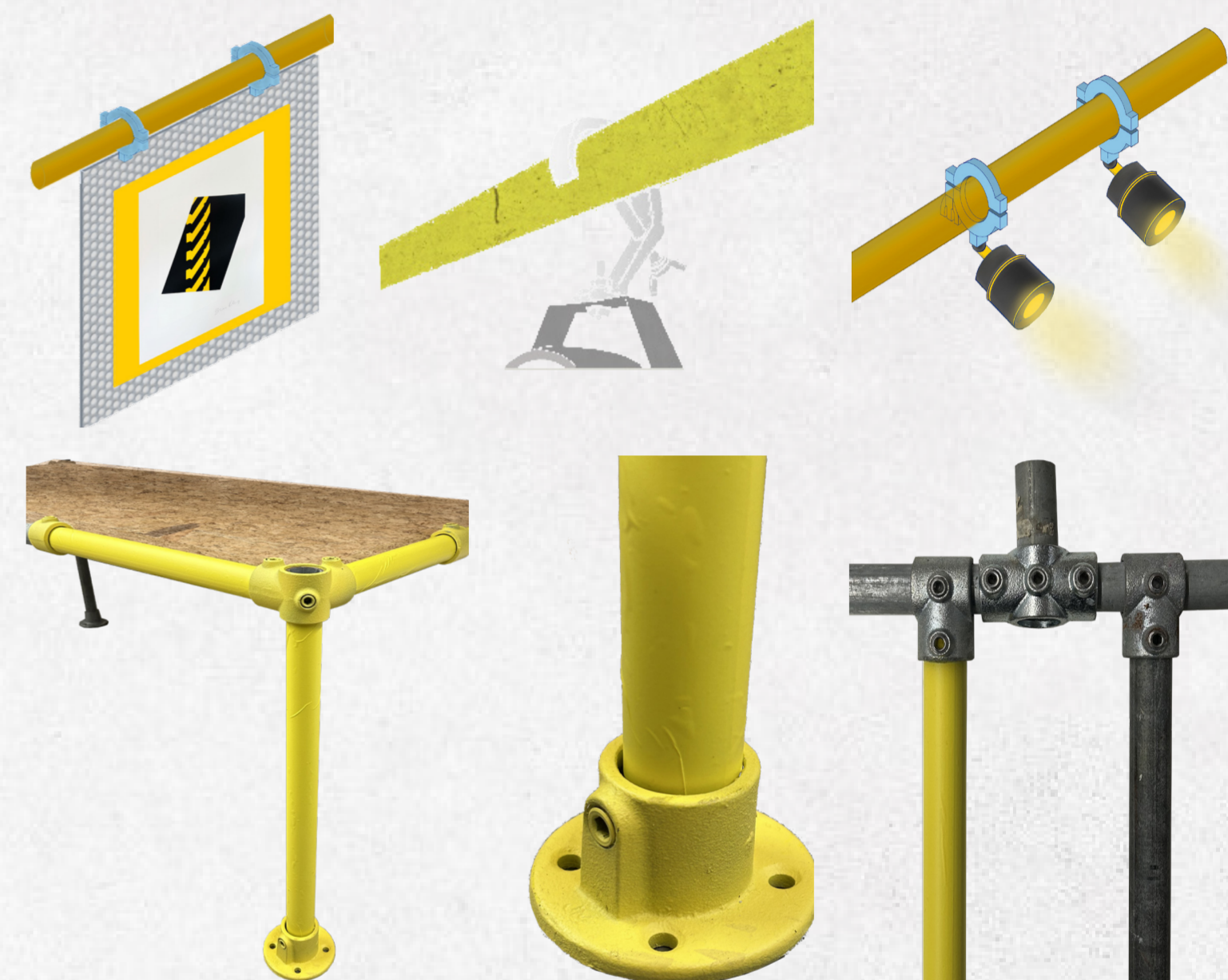


FRAMEWORK A STUDENT BAR!?

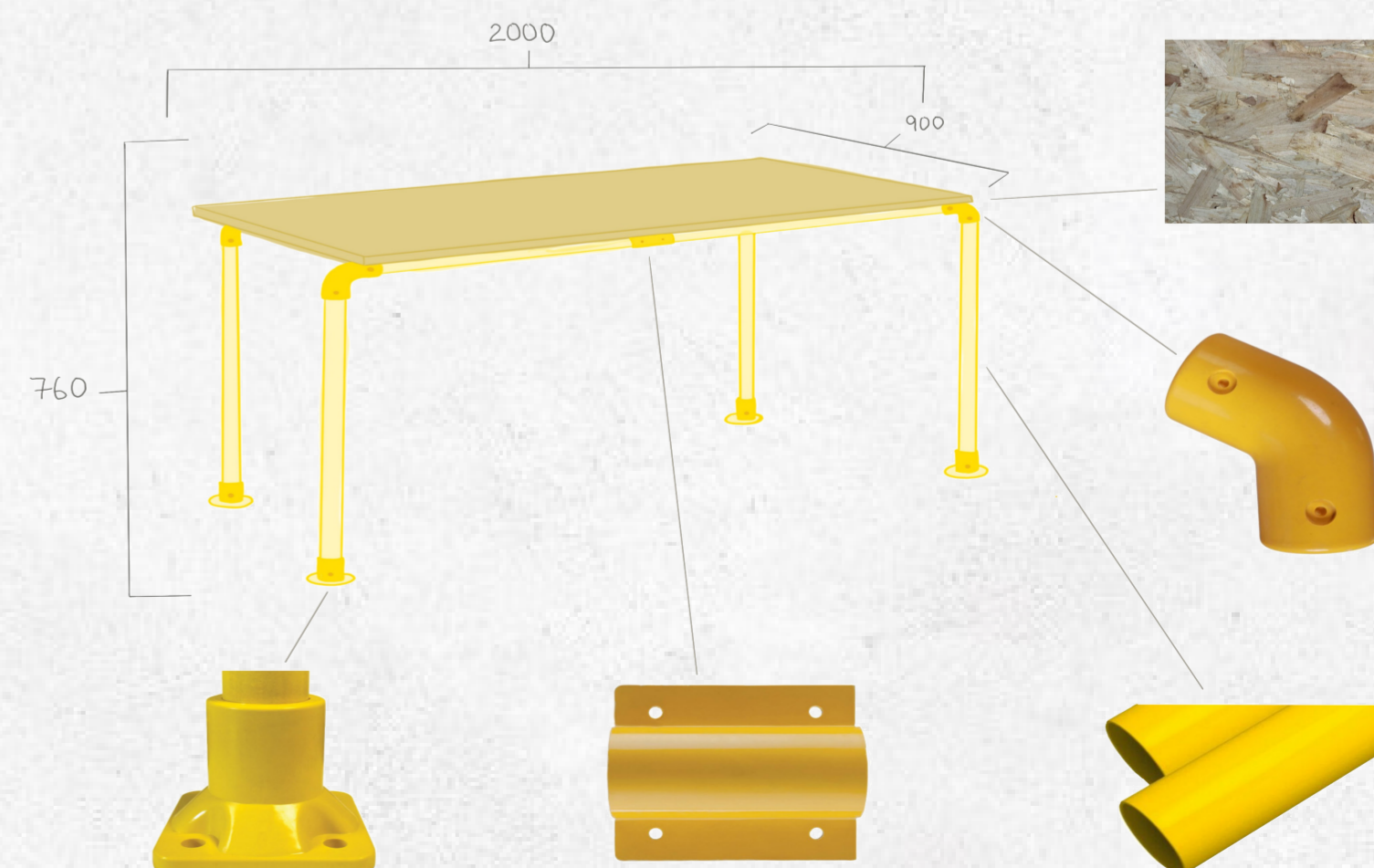
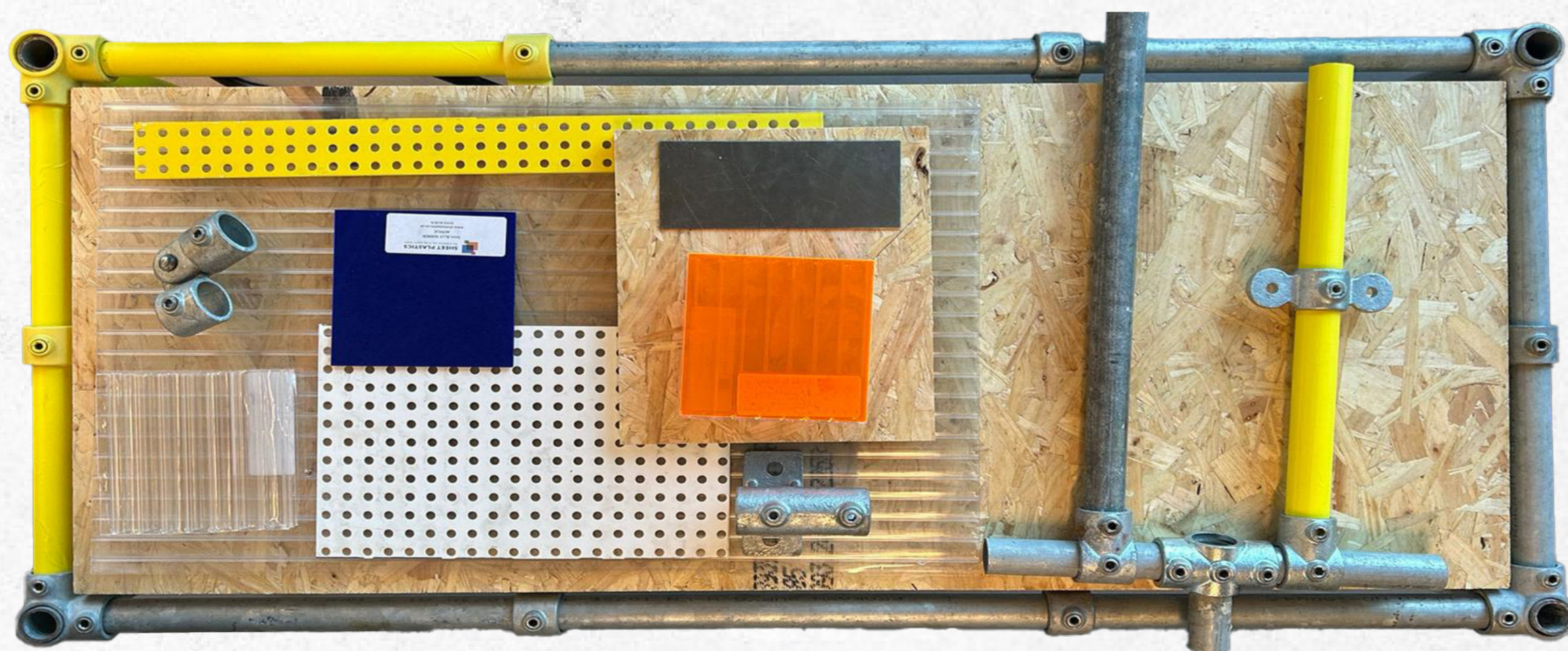
ARCHIVE VISUALISATION



We designed our lighting, shelving, seating, and other furniture elements using scaffolding so that it has the potential to be attached to the framework. We decided on using C-clamps and attachable stage lights as a method of displaying work and lighting. This approach allows for efficient construction, deconstruction, and repositioning, essential qualities for a space that changes function throughout the day. Our design also incorporated an archive space to display the work of architect Ben Kelly. Inspired by his use of industrial materials, we intentionally chose components that demonstrated this. Shown here are images of our test pieces, both digital and physical prototypes, used to explore materiality, and methods of assembly.



PHYSICAL MATERIAL PALETTE & 1/1 SCAFFOLD BENCH



A STUDENT BAR !?



Chipboard Orange paint Blue paint

Yellow Scaffolding Orange acrylic

Blue perforated steel

When considering materiality and colour, we drew inspiration from the workshop located next to the student bar, aiming to bring the creative energy of the university into the bar itself. The yellow powder-coated scaffolding frame and furniture details were inspired by the yellow safety tape found throughout the workshop, creating a visual link between the two spaces. We also looked at the work of Ben Kelly, with his work displayed in the bar in the archive, we wanted this to be reflected in our design. Kelly's use of orange and blue informed our accent choices, while his preference for industrial materials inspired our use of perforated steel and chipboard.