

ReLeafed

“Where Nature Meets Imagination”

Is an immersive project that redefines waste as potential. Visitors journey through a multi-sensory space where fallen leaves and mycelium are transformed into vibrant, sustainable fabrics. Starting on the ground floor, guests engage with mushroom cultivation and learn how mycelium becomes fabric. The second floor features a treetop walkway where leaves are collected and washed for natural dye extraction. Finally, visitors customise their own wearable pieces using these eco-dyed fabrics in a hands-on workshop. The architecture itself—layered like growing leaves—brings in sunlight and reinforces the organic experience. ReLeafed connects people emotionally to nature’s overlooked materials, turning decay into creativity. Its focus on natural reuse, education, and interaction directly addresses the Climate Emergency by promoting circular design, sustainable practices, and creative engagement with our environment. ReLeafed doesn’t just inspire—it equips people to reimagine their relationship with waste, colour, and material.



COLLAB BRAND IN KINGSTON

FANFARE - CIRCULAR DESIGN BRAND



FANFARE

1- Organic and Recycled Denim



2- Linen and Upcycled Fabrics



3- Zero Waste Production Fabrics



4- Plastic + Rubber Free-Production



Fanfare Label attracts a clientele that values sustainability, transparency, and ethical production. This group is drawn to Fanfare's values and commitment to circular fashion, prioritizing quality and sustainability over fast fashion trends.

Profession and Interests

1- Creative Professionals:

2- Sustainability Advocates:

3- Urban Professionals:

MY TARGET AUDIENCE:



Alejandra Sarmiento
Job: Fashion Designer



Tom Hollen
Job: Architect



David Gomez
Job: Graphic Designer



Andrea Jones
Job: Interior Designer
Student



LEAVES COLLECTION ANALYSIS :

Kingston upon Thames boasts around 183 designated green spaces, including parks, nature reserves, and gardens, spread across the borough. These green areas, like Hampton Court Park, Canbury Gardens, and Berrylands Nature Reserve, cover various functions such as leisure, conservation, and community engagement

1- The Bishop - Near The Site

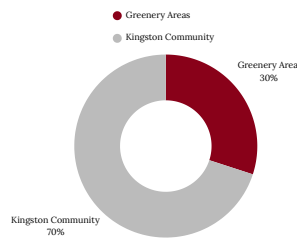
2- Fairfield Recreation Ground

3- Memorial Gardens

4- Hampton Court - Kingston Park

5- The Thames Path - Near the river

6- Housing Roads



1



2



3



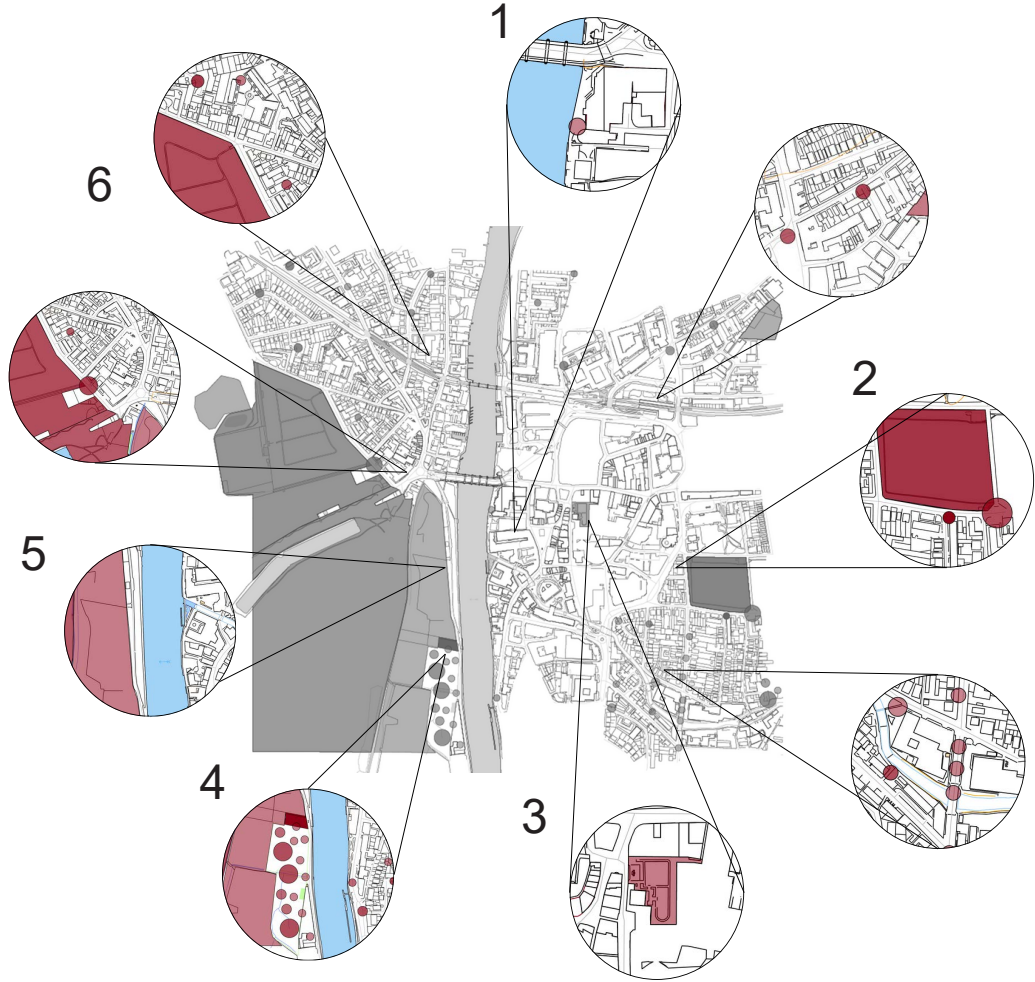
4



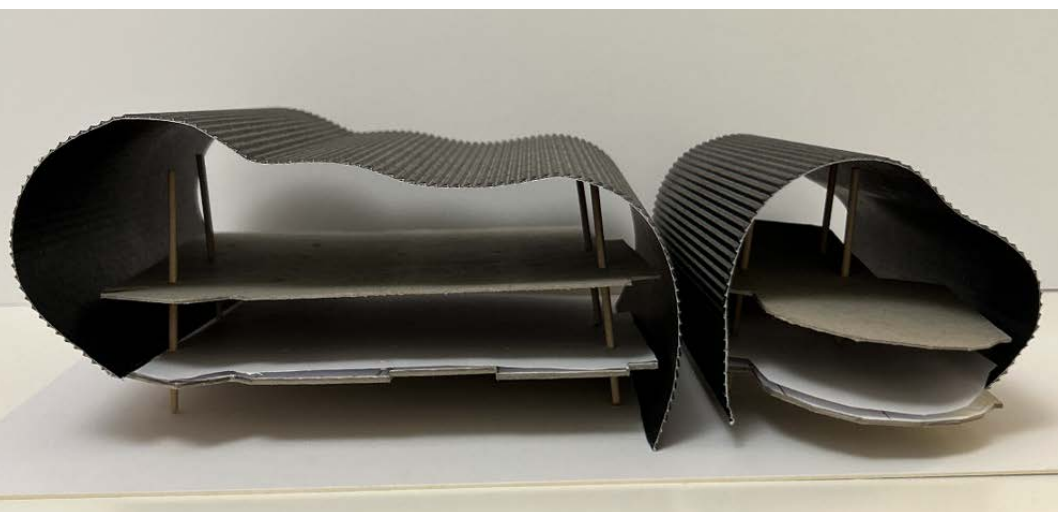
5



6



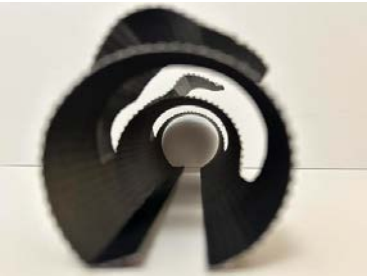
LEAVES CONCEPT DEVELOPMENT : ORGANIC ROOF



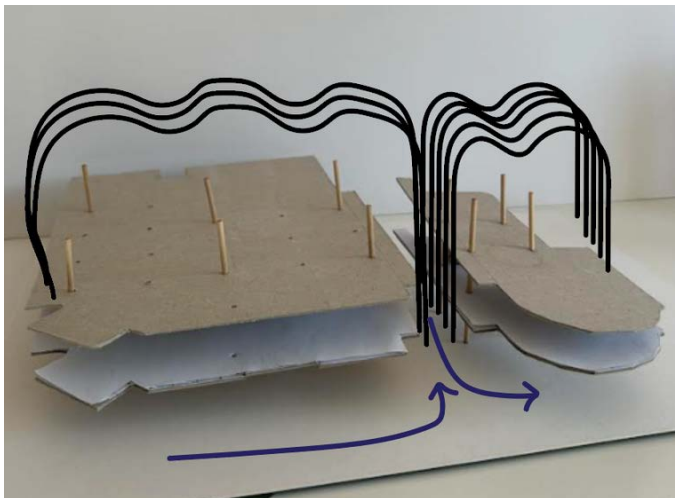
On this Page I wanted to briefly show my concept design process, by highlighting the 2 concept models that allow me to make this final concept model. Based on :

- 1- Reflection (Mirror the layers)
- 2- Having a roof that connects all of the spaces together!!

As well as Adding some potential openings as its shown above to allow the light and wind to come through the space as well.

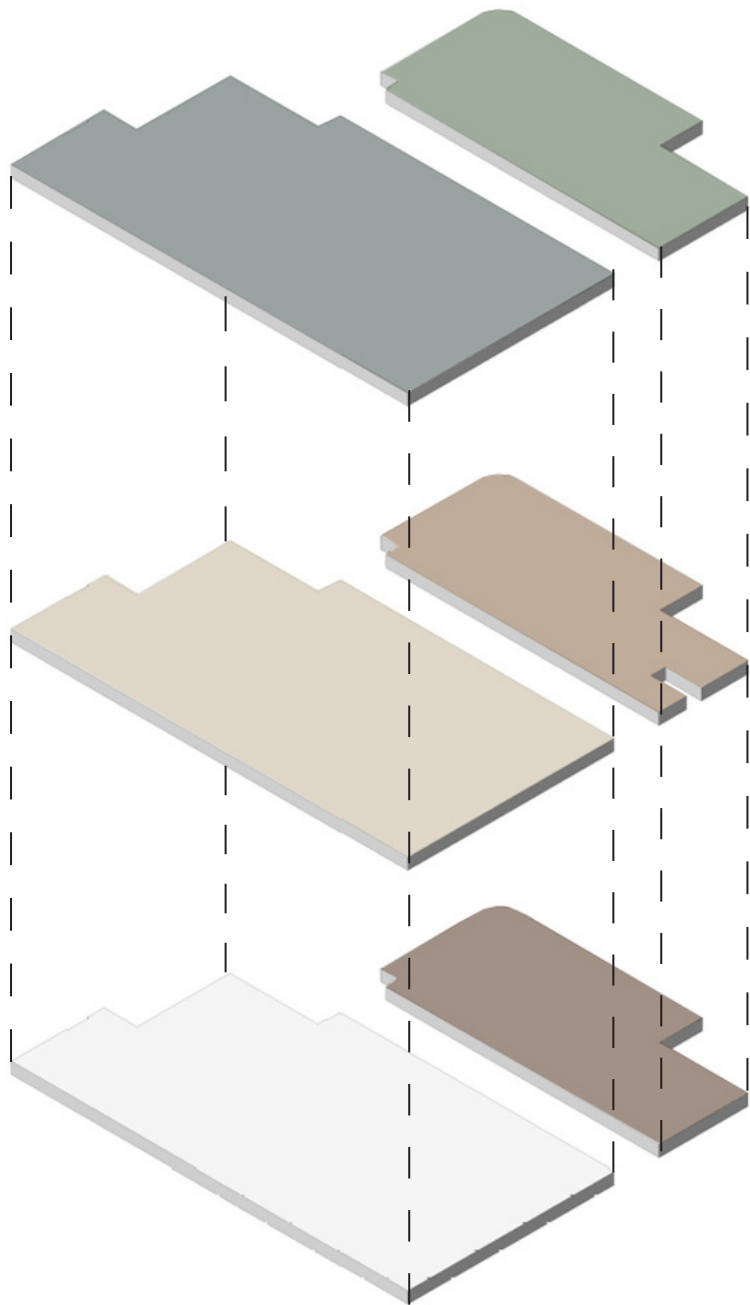


Cut into Layers:

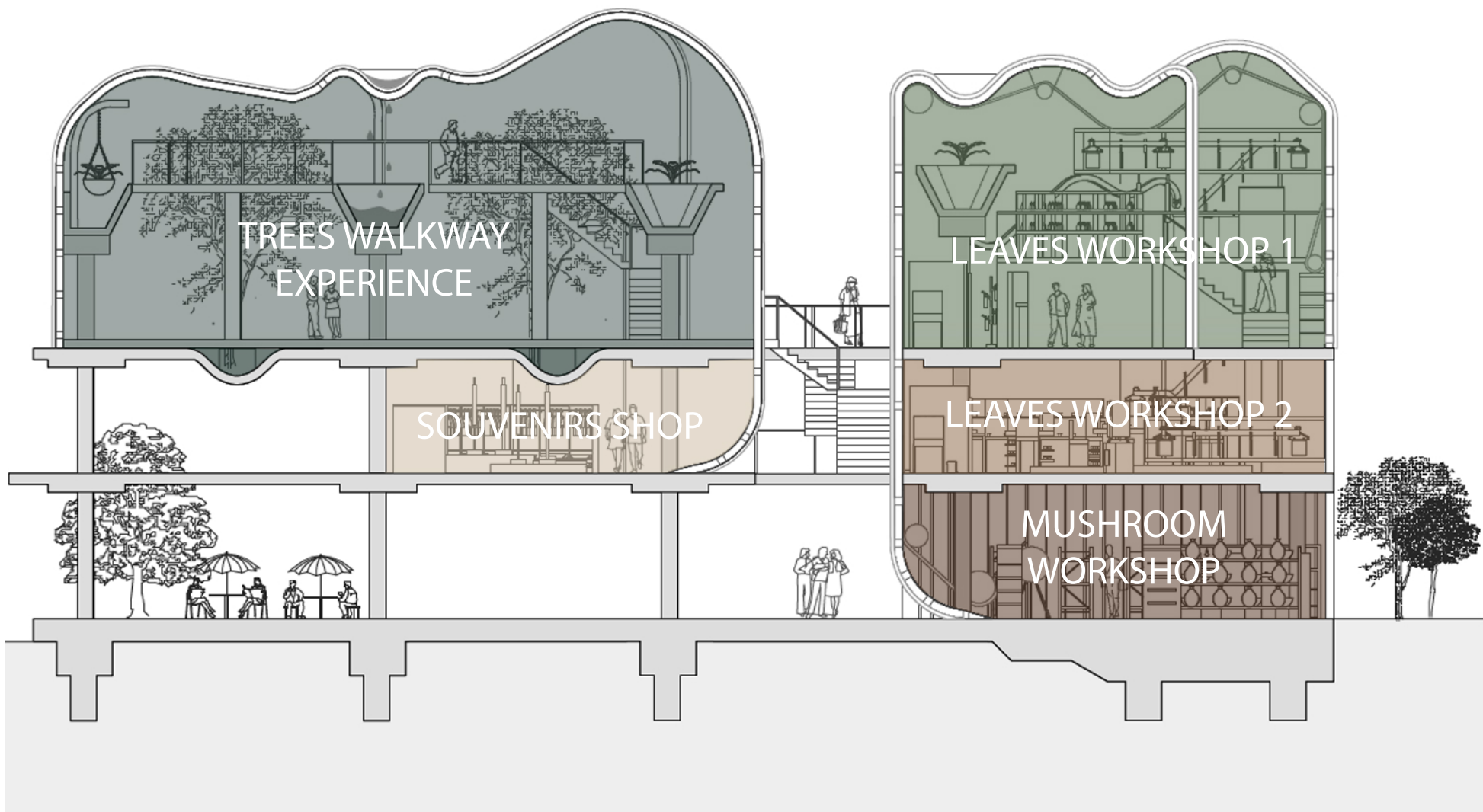


SPATIAL ZONING DIAGRAM:

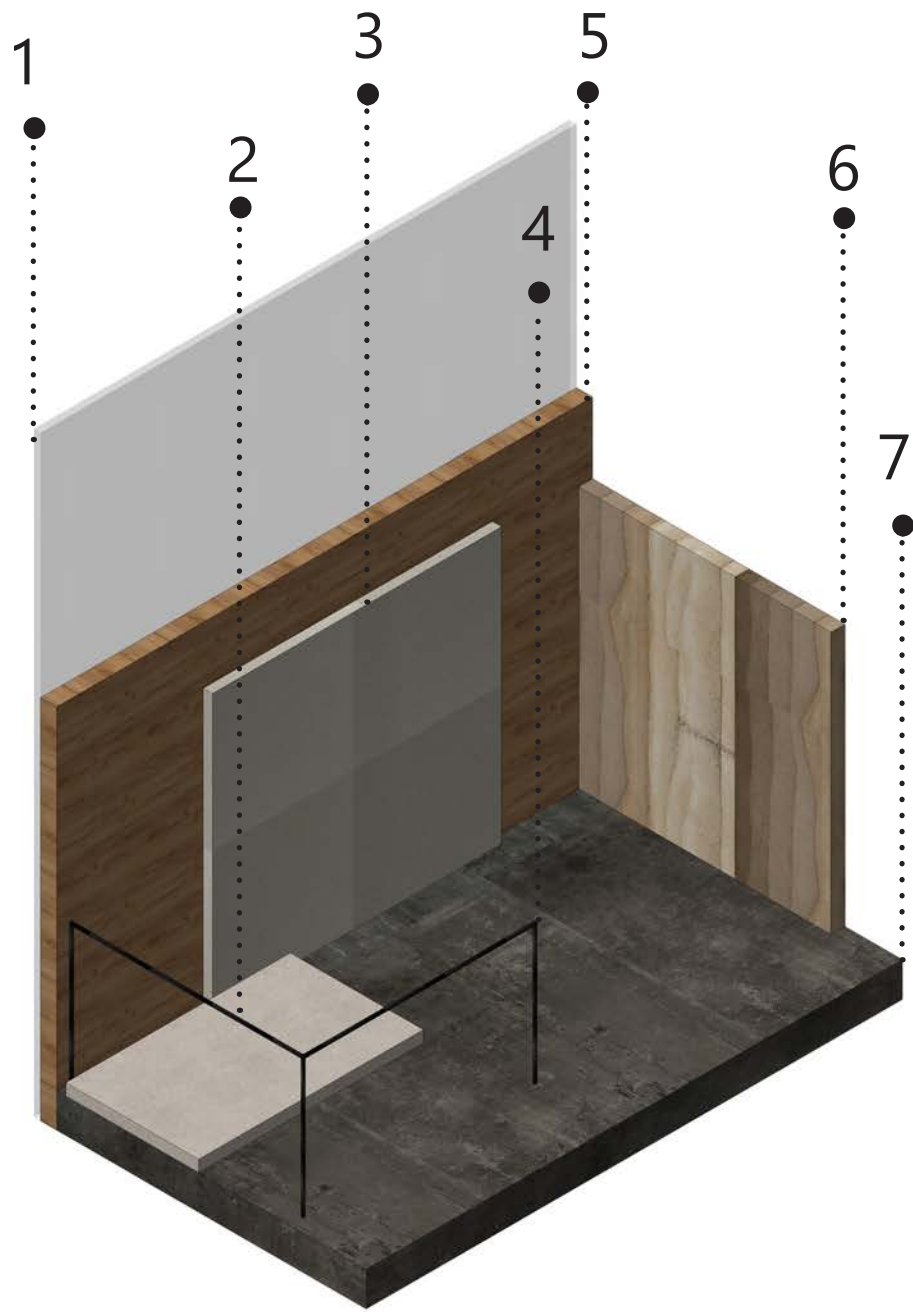
- GROUND FLOOR ZONING:
- 1 - Mushroom WorkSpace
- FIRST FLOOR ZONING:
- 1- Leaves Workshop 2
- 2- Souvenirs Shop
- SECOND FLOOR ZONING:
- 1- Trees Walkway Experience
- 2- Leaves Workshop 1



SPATIAL ZONING DIAGRAM: LONG SECTION BB

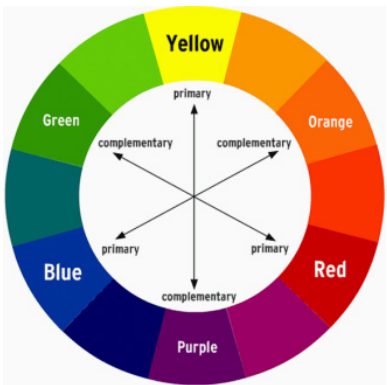
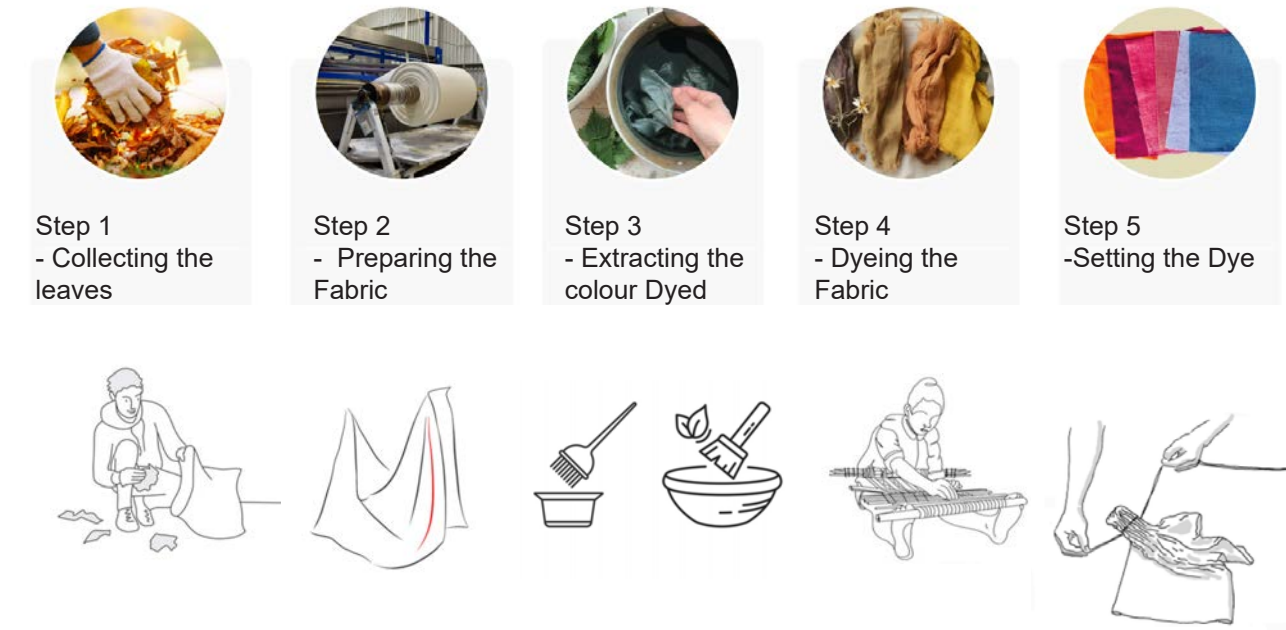


MATERIALITY:

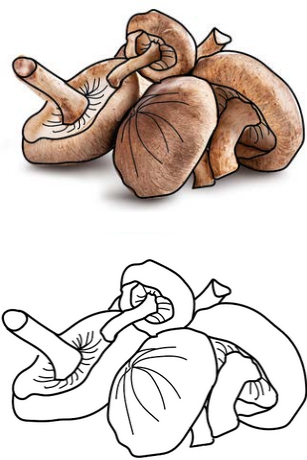
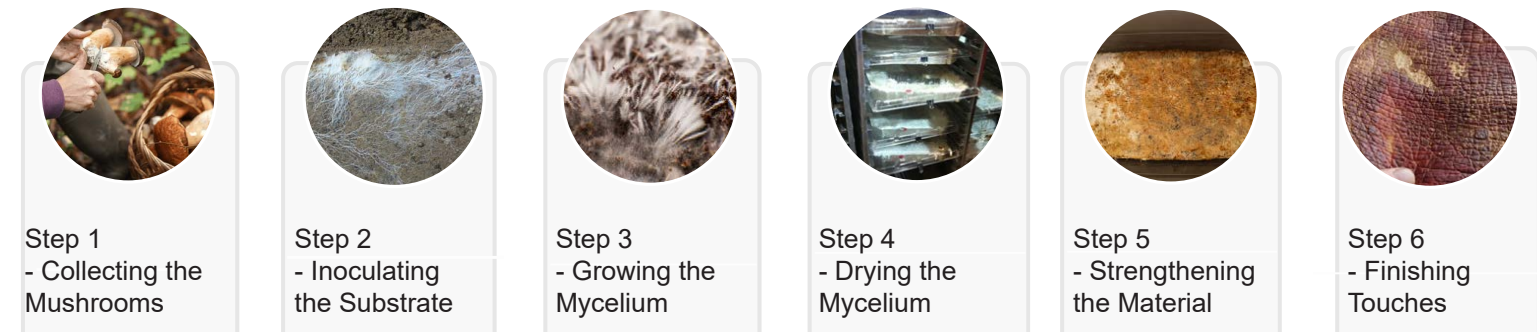


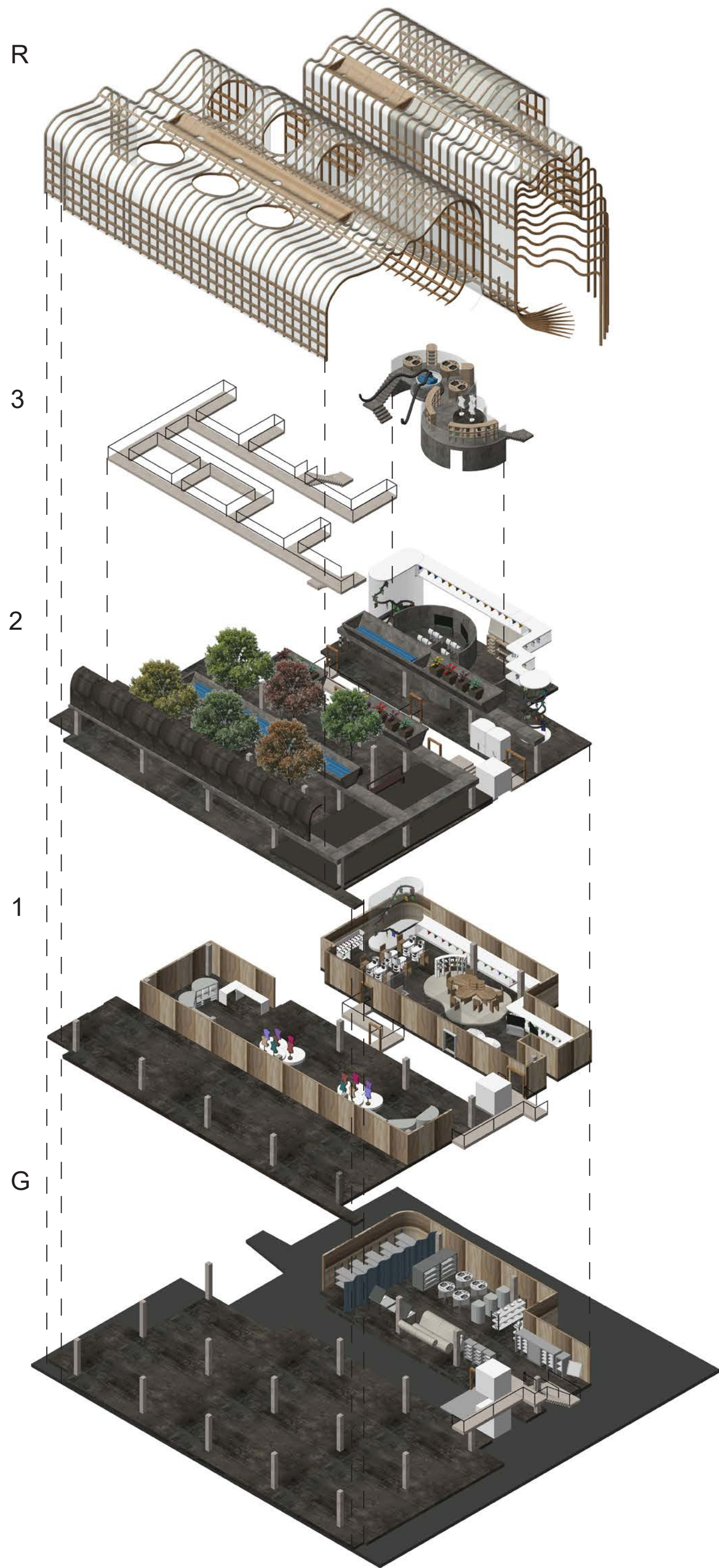
- 1- Polycarbonate Clear Glass - Roof
- 2- Light Concrete Texture - Stairs
- 3- Mycelium Fabric
- 4- Dark Steel Metal
- 5- Wood Timber - Roof Layers
- 6- Textured Walls
- 7- Dark Grey -Concrete Flooring

LEAVES EXTRACTING DYED COLOUR: MANUFACTURE PROCESS

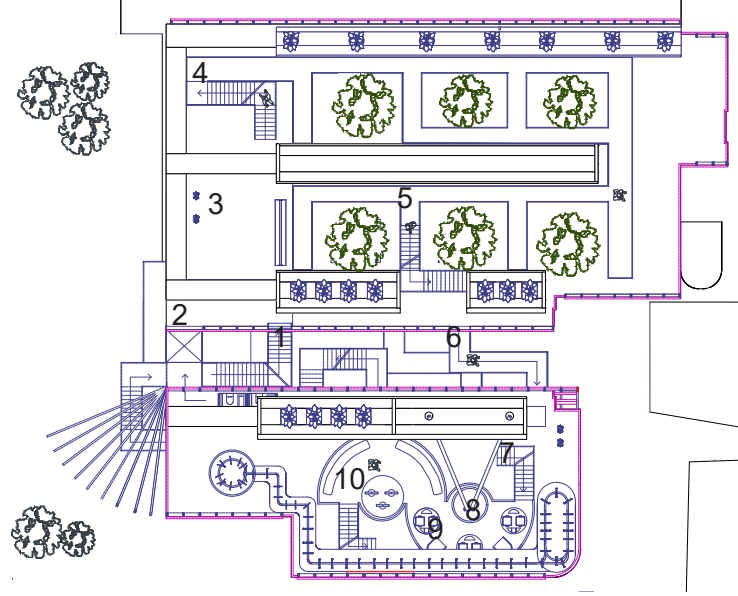


MYCELIUM INTO FABRIC - MANUFACTURE PROCESS



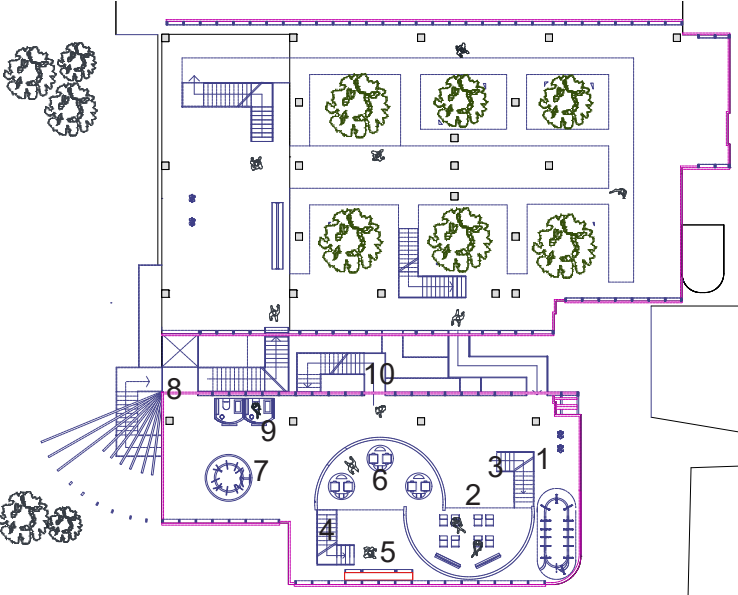


3 SECOND FLOOR PLAN (UPPER)



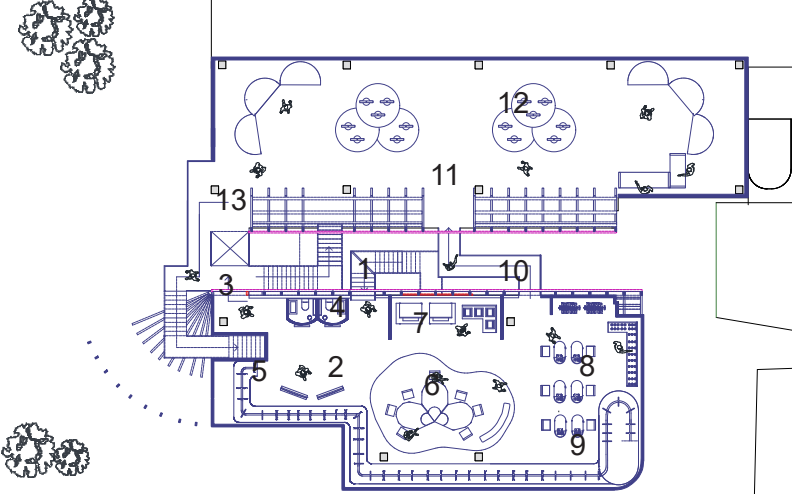
- 1- Stairs Visitors Circulation
- 2- Lift Access
- 3- Grab the bags to collect the leaves
- 3- Stairs to the Walkway through the trees
- 4- Corridor walkway - Leaves Collection in Between the trees
- 5- Stairs Access to go downstairs
- 6- Exterior Corridor Access to the leaves Workshop
- 7- Stairs Access to the mezzanine Workshop
- 8- Collecting the Water
- 9- Washing the Leaves + Extracting the Colour Dyed
- 10- Collecting the Colour Tint Bottles

2 SECOND FLOOR PLAN (LOWER)



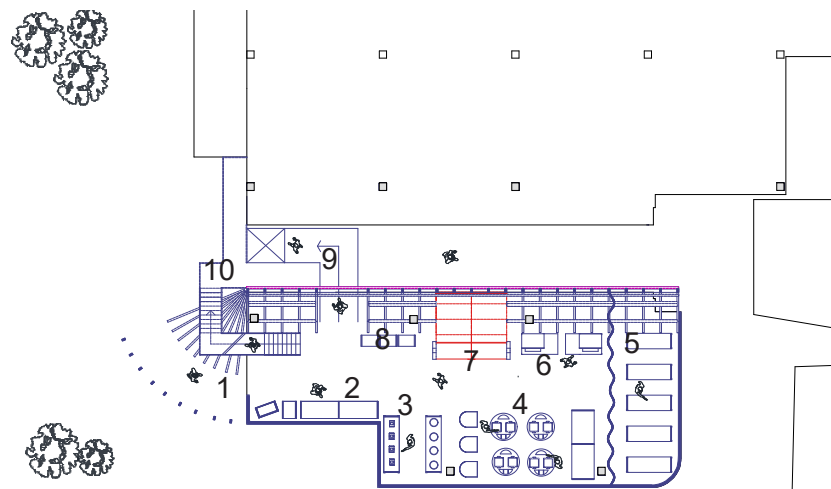
- 1- View of the Moveable Machine Dryer
- 2- Briefly Presentation about the Workshop and Guidance
- 3- Stairs to Access the mezzanine workshop
- 4- Stairs Access to go Downstairs
- 5- Collecting the Fabric Piece
- 6- Mixing the Fabric + Colour Tint
- 7- Placing the Wet Fabric into the Dryer
- 8- Lift Access to all the floors
- 9- WC's
- 10- Exterior Corridor Access to go downstairs

1 FIRST FLOOR PLAN



- 1- Stairs Access to go Downstairs
- 2- Briefly Presentation of the activities around the space
- 3- Lift Access to enter the space
- 4- WC's
- 5- Collecting the Dyed Fabric Piece
- 6- Customising the Fabric Mini Workshop 1
- 7- Leaves Stamp Area
- 8- Customising the Fabric Mini Workshop 2
- 9- View from downstairs of the moveable dryer
- 10- Access to the corridor
- 11- Fanfare's Souvenirs Shop- Entrance
- 12- Mannequin Area
- 13- Exit to the stairs or lift to acces the main road downstairs

G GROUND FLOOR PLAN



- 1- Entrance Access
- 2- Collecting the Mushrooms + Presentation
- 3- Collecting the Materials
- 4- Mixing the Materials + Mini Workshop
- 5- Mushroom Farming
- 6- Compressing the Fabric
- 7- Fabric Roller
- 8- Fabric Stand
- 9- Lift Access
- 10- Stairs Access to Upstairs



3 - COLLECTING THE TINT COLOUR BOTTLES



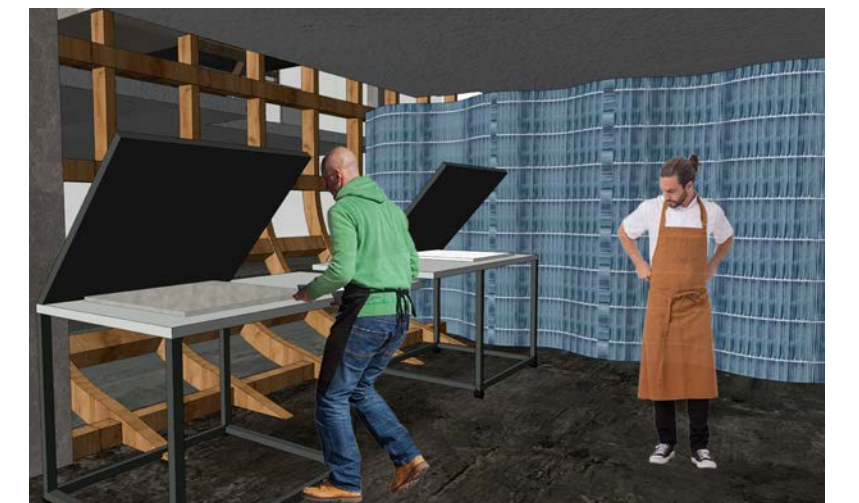
2 - TREES WALKWAY UPSTAIRS VIEW



1 - CUSTOMISING YOUR FABRIC



1 - FANFARE'S SOUVENIRS SHOP



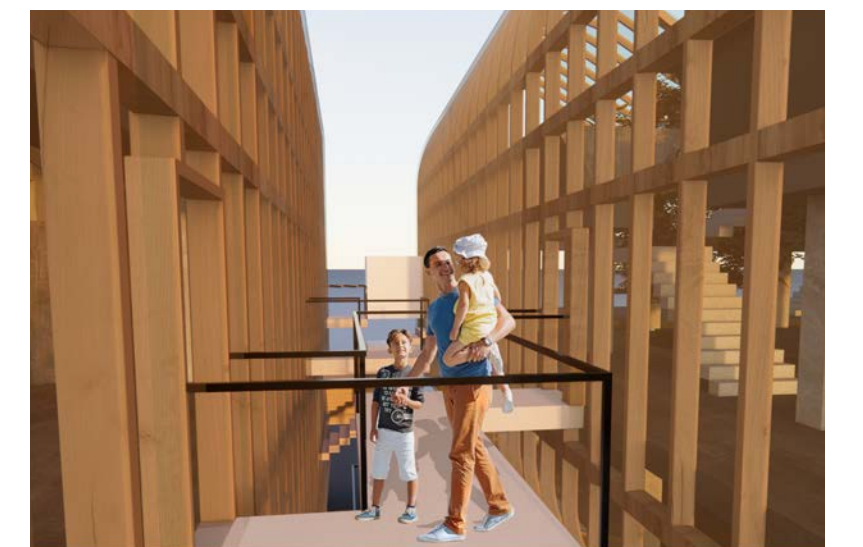
G - COMPRESSING THE FABRIC - MUSHROOM AREA



1 - LEAVES WALKWAY DOWNSTAIRS



2 - CORRIDOR VIEW



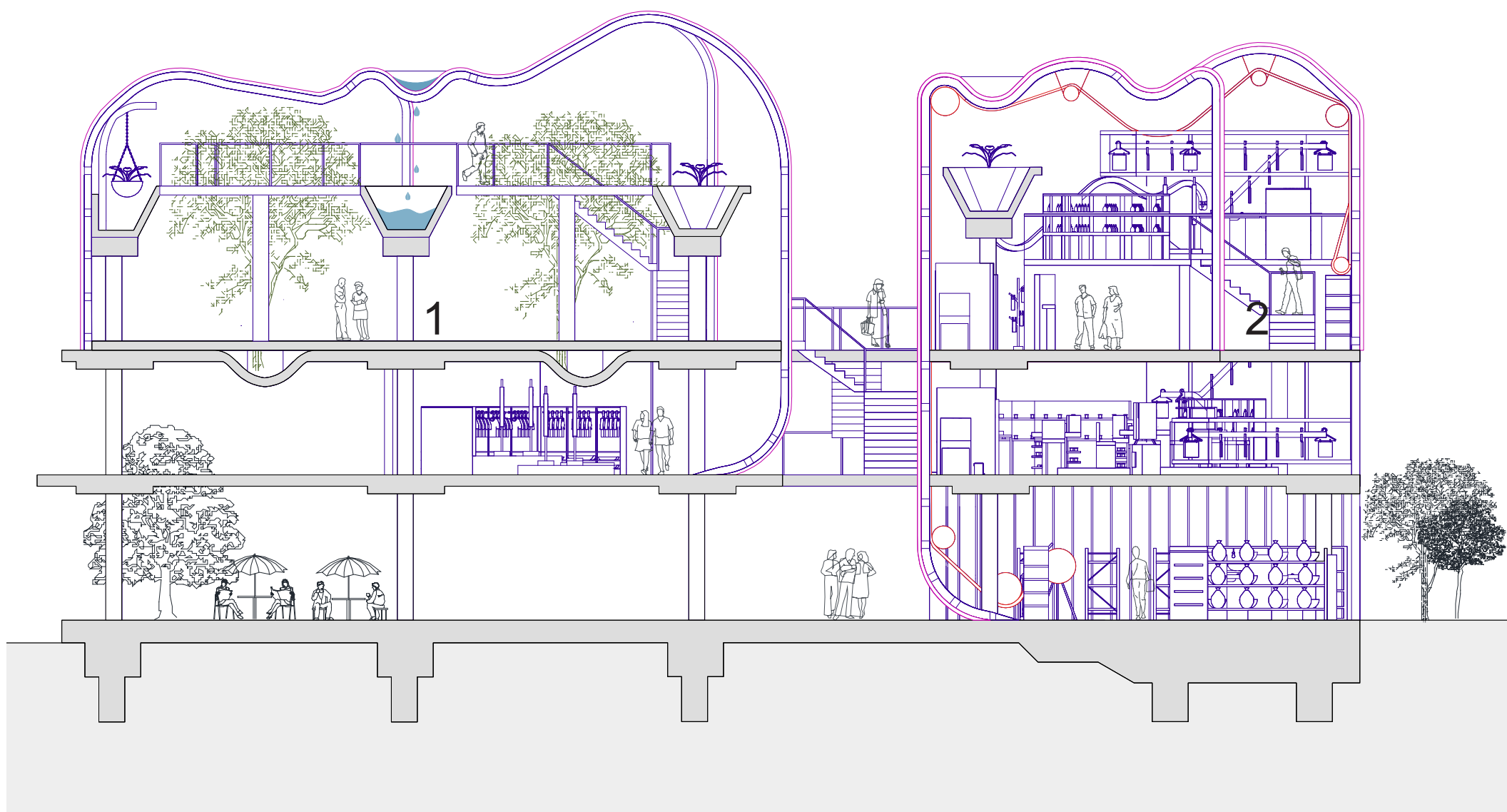
3 - LEAVES WORKSHOP (DOWNSTAIRS)



4 - COLLECTING THE FABRIC



LONG SECTION BB



LONG SECTION AA

