

ARMOUR PLATE SHOP

A stacked clutter workshop in a boatyard that is adapted into a multi-functional urban farm for recreation, entertainment, education and production.

Context

The Historical Dockyard has brought a significant economic benefit and reputation to the local area, attracting people to live and work here and creating a deep collective memory for countless locals and their generations to come. Since closure, the dockyard's chain of industries has been disrupted, its population has declined, its community values have faded, and a sense of alienation has developed between the Historical Dockyard and Chatham.

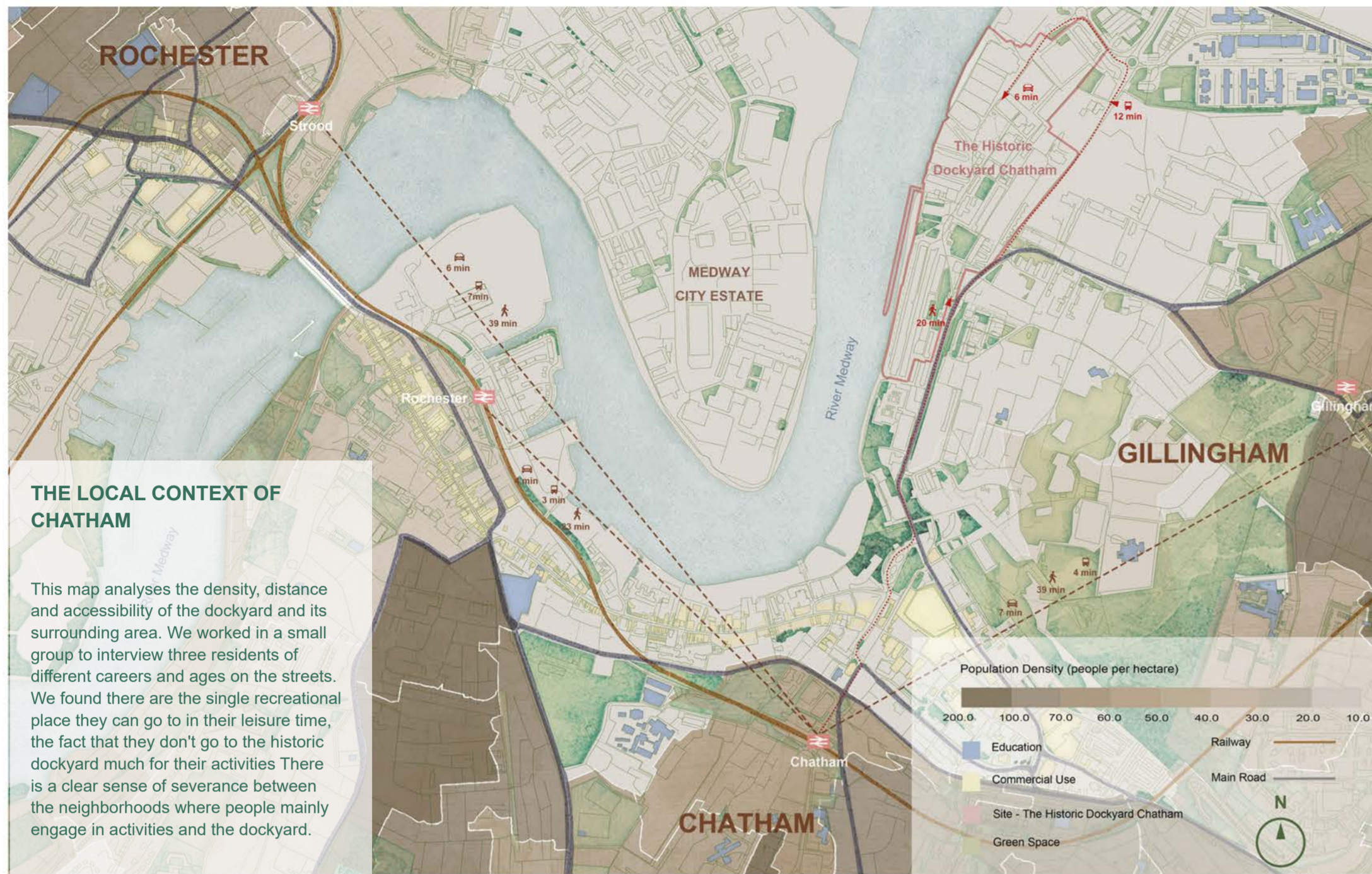
In the Historical Dockyard, many factory-scale and construction buildings remain from the days when it was a bustling manufacturing location. Despite its transformation into a tourist attraction, it still lacks appeals to locals. Based on surveys, the dockyard is frequented by tourists, dockyard enthusiasts, and students on school trips, but not by those who live nearby. Meanwhile, people feel that community life in Chatham is dull and homogenous and that they need an extra open space.

Aims

The water source near the Medway River and the equipped rainwater harvesting system are utilised to satisfy the water needs inside and out of the building. There is an aquaponics growing system set up in the building, which is grown in a sustainable and recycled way, supplying fresh produce to nearby restaurants and schools, with a portion of the proceeds going to charity. There is also a farmer's market on the exterior of the building, which community residents are invited to run, creating a platform for socialising and fostering the hobby of growing.

As an integrated community centre, the building also serves an educational function, providing opportunities for the public to practice and increase environmental awareness. People of all ages are encouraged to visit and participate in activities in this public space, combining green space with nature to create a sustainable ecosystem. This project aims to contribute to Chatham's future by fostering innovation and community development.





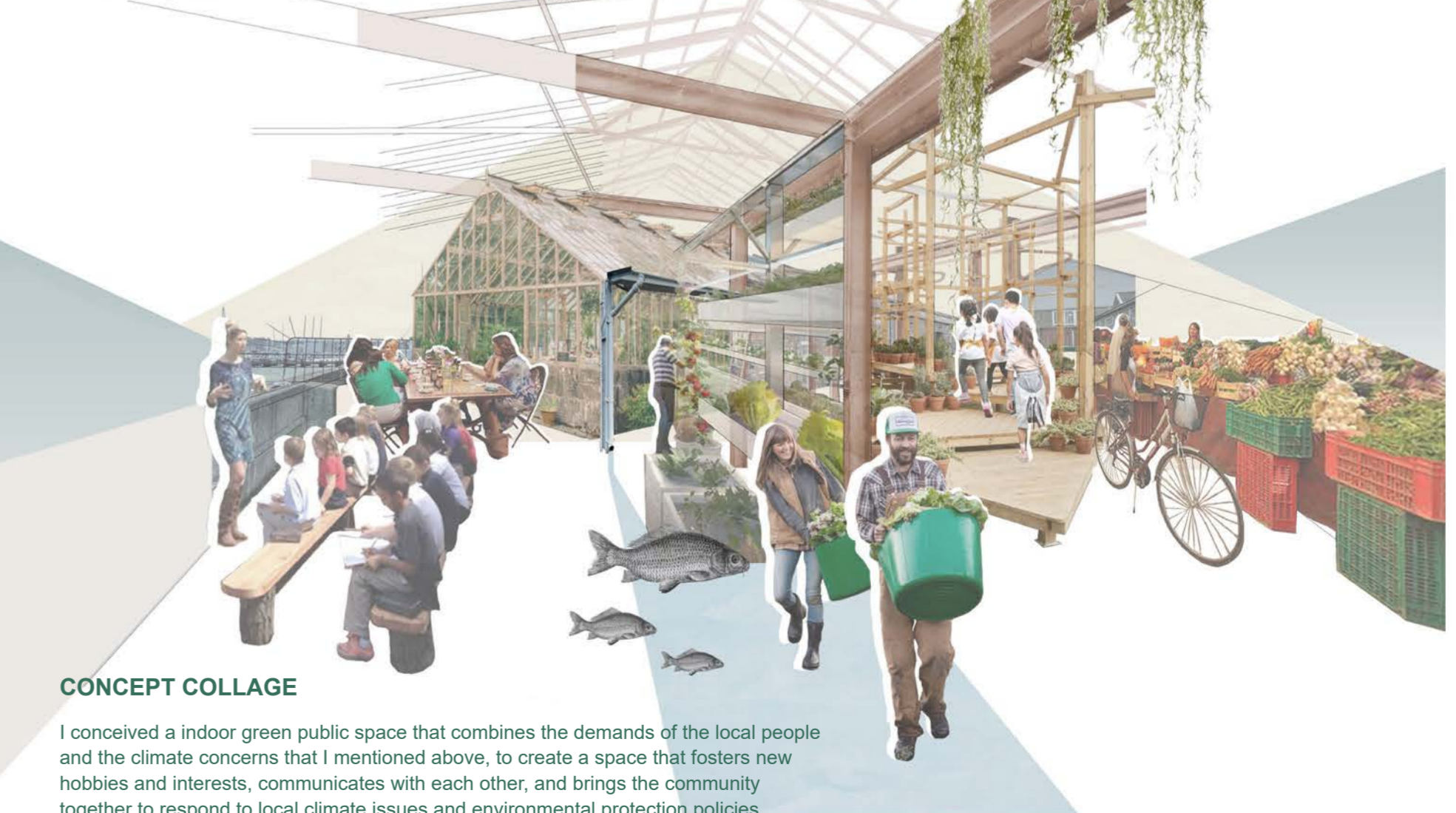
What kind of new public Spaces are residents looking forward to?

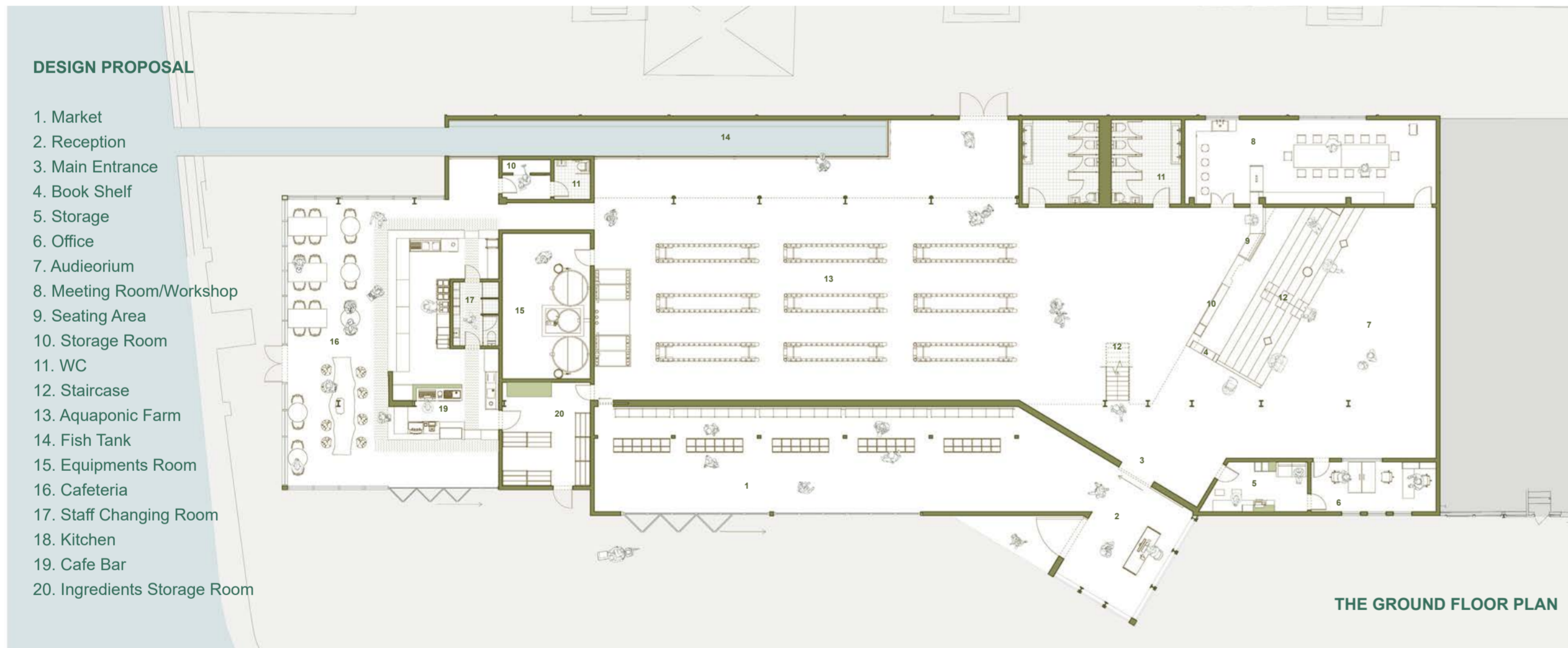
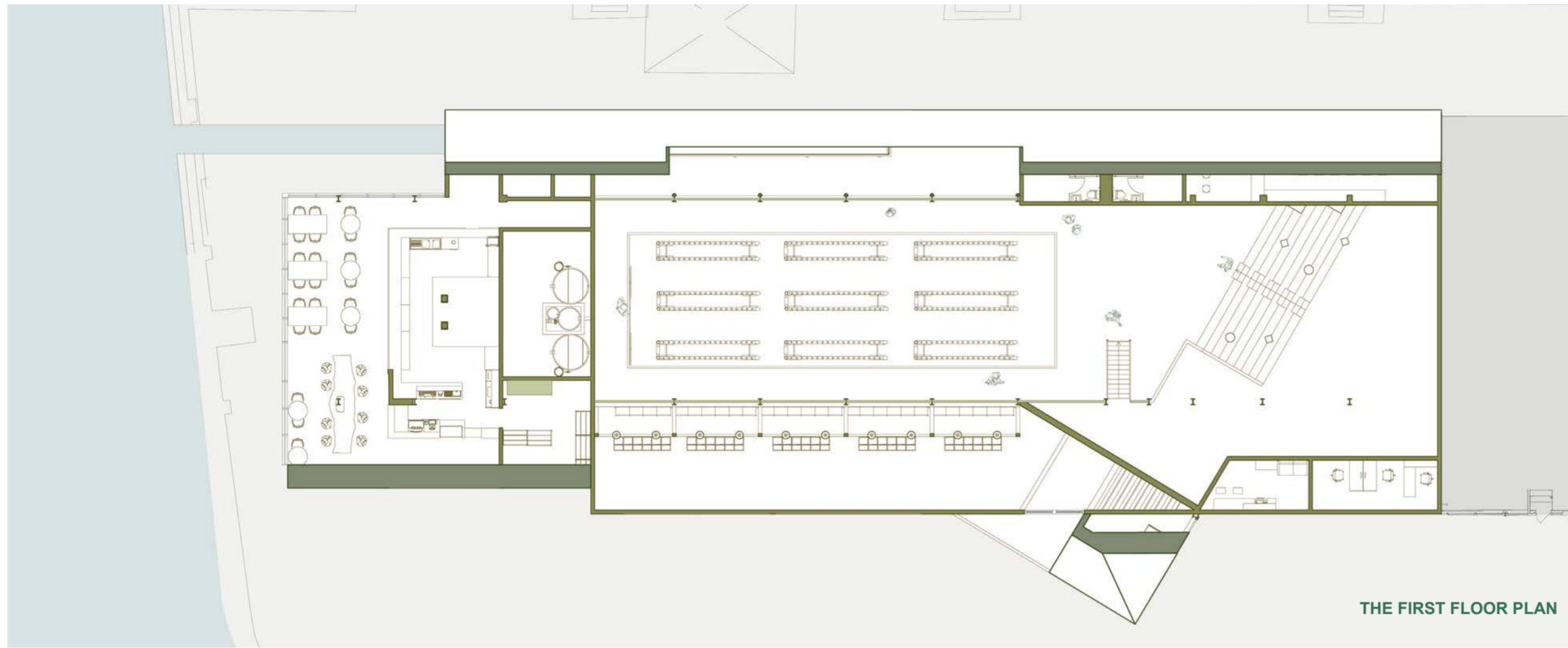


Chatham's authority district, Medway, is highly focused on the local natural environment and climate change. To address these concerns, it has organized and planned a series of actions, including:

- Ensuring high-quality green space in the new Local Plan for developments.
- Implementing systems to reduce energy consumption and promote low-carbon practices in building retrofit programs.
- Increasing awareness of climate change issues.
- Engaging residents, students, and workers in Medway communities in decision-making processes.
- Supporting community action to bring about positive change.

FUNCTION AND PARTICIPANT COOPERATION DIAGRAM

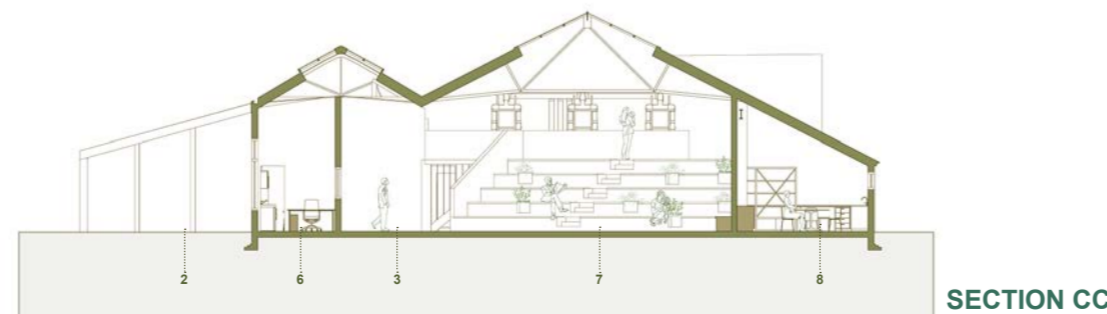
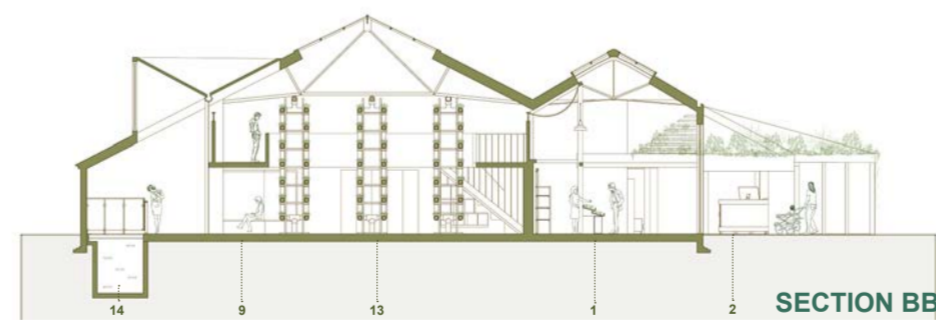
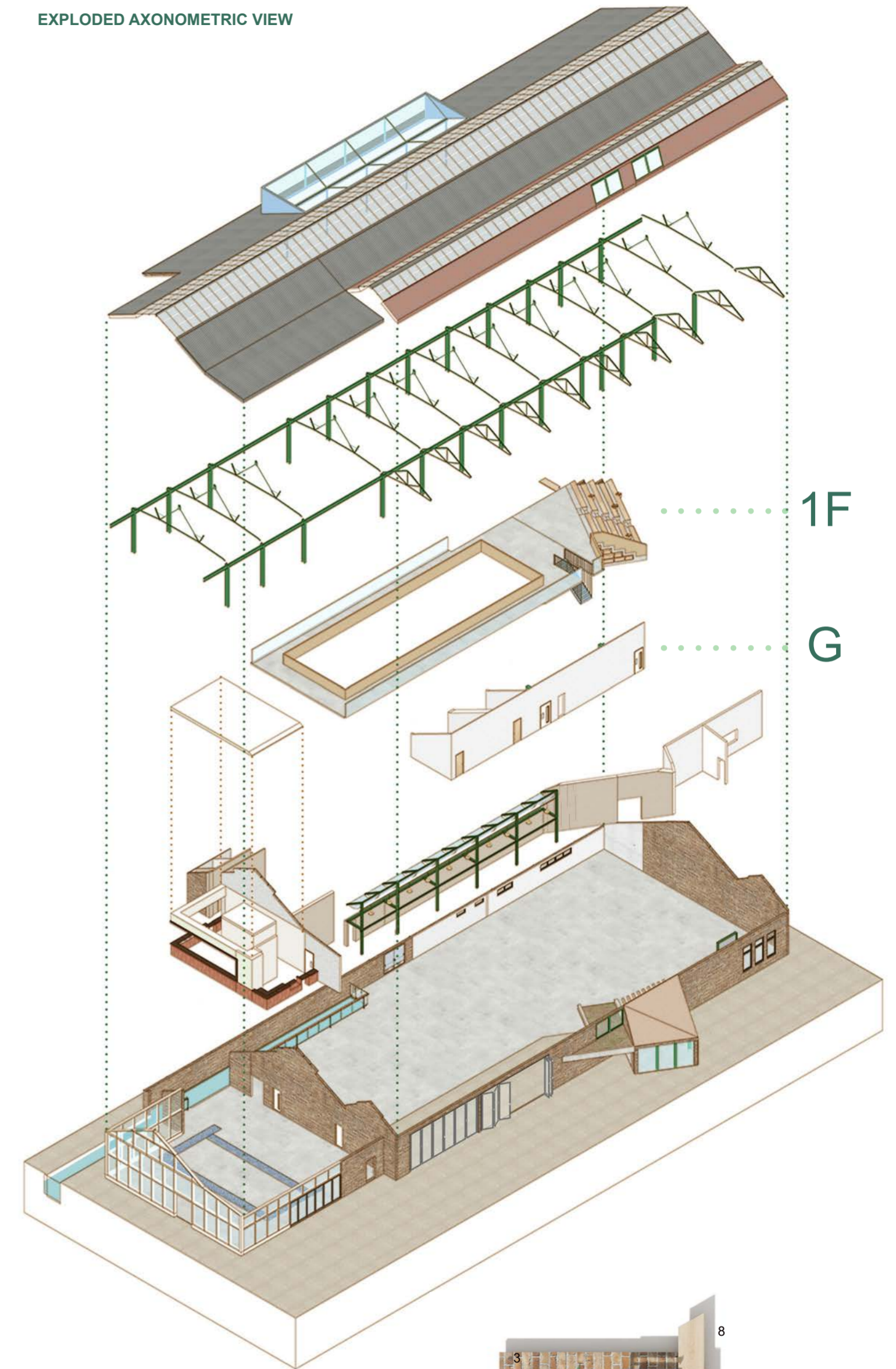




DESIGN PROPOSAL

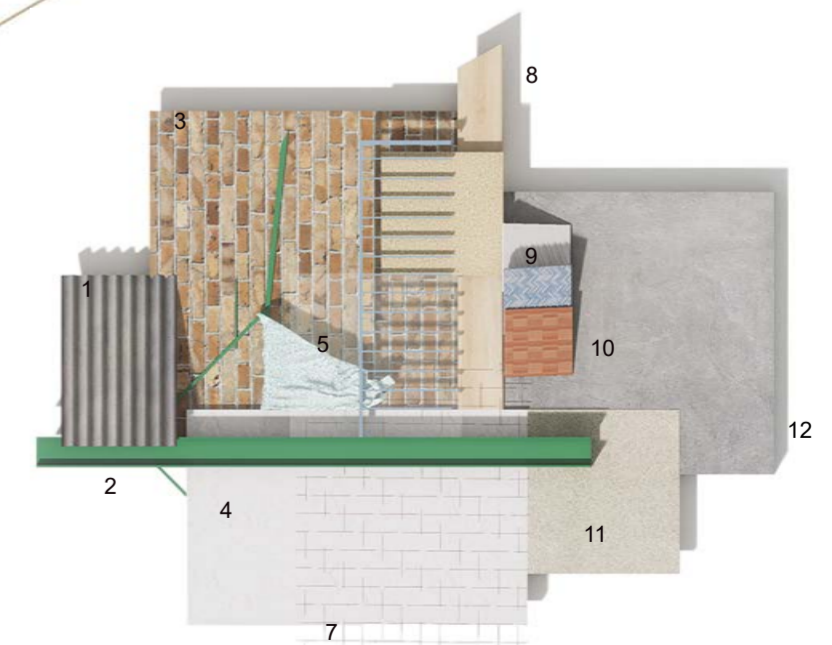
- 1. Market
- 2. Reception
- 3. Main Entrance
- 4. Book Shelf
- 5. Storage
- 6. Office
- 7. Auditorium
- 8. Meeting Room/Workshop
- 9. Seating Area
- 10. Storage Room
- 11. WC
- 12. Staircase
- 13. Aquaponic Farm
- 14. Fish Tank
- 15. Equipments Room
- 16. Cafeteria
- 17. Staff Changing Room
- 18. Kitchen
- 19. Cafe Bar
- 20. Ingredients Storage Room

EXPLODED AXONOMETRIC VIEW



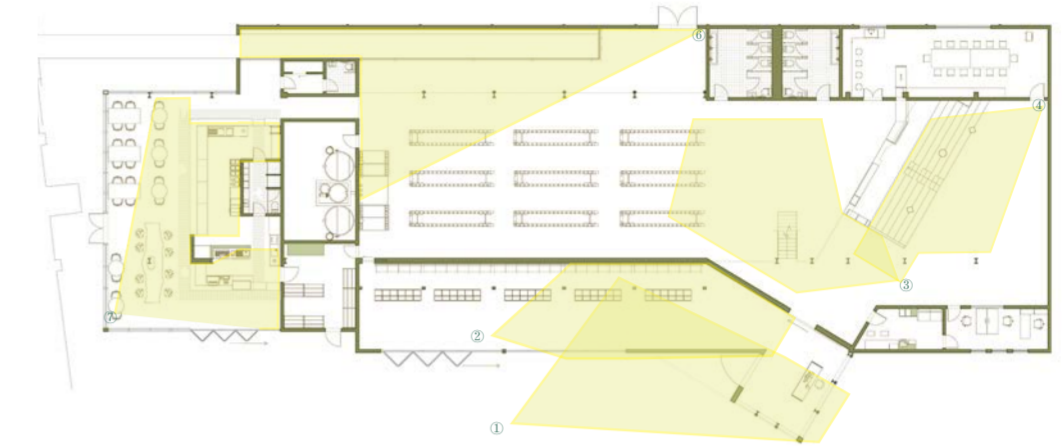
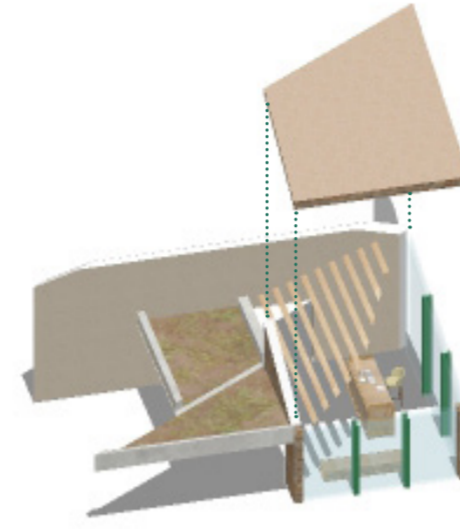
MATERIAL PALETTE

- 1. Corrugated Aluminium
- 2. Steel
- 3. Red Brick
- 4. Plaster
- 5. Fabric
- 6. Glass
- 7. Wires
- 8. Timber
- 9. Bio Board
- 10. Pattern Floor Tiles
- 11. Sand & Stones
- 12. Concrete





VISUALISATIONS



THE GROUND FLOOR PLAN

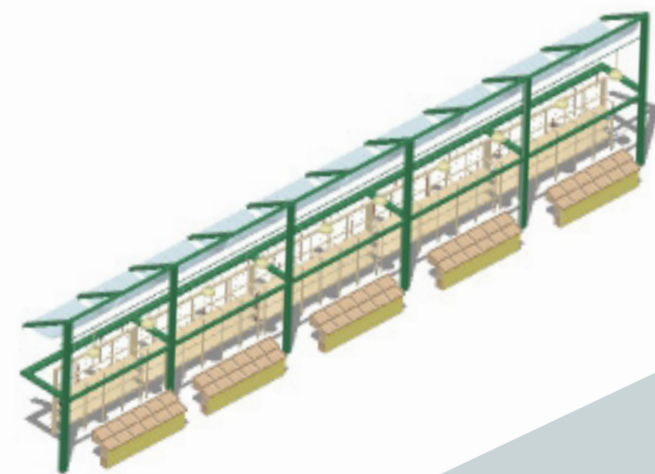
① Entrance

The building has two entrances that open up the lobby to the public, a semi-open marketplace on the side of the wall and a prominent geometric entrance that intersects at the reception. The greenery on the roof is the symbol of the building and guides people to come and explore it. In good weather, a series of activities can be held in the building's open outdoor space, and part of the outdoor area can be opened up as an allotment for the community to use.



② Market

In addition to a fixed stall selling produce from the building's aquaponics farm, the market is also a place for residents to come and sell and trade their homemade food, crops, and so on. The shelves and displays in the market are easy to move and assemble, so there is no limit to the use of the space, and it can even be used as a celebration and temporary exhibition during local festivals.



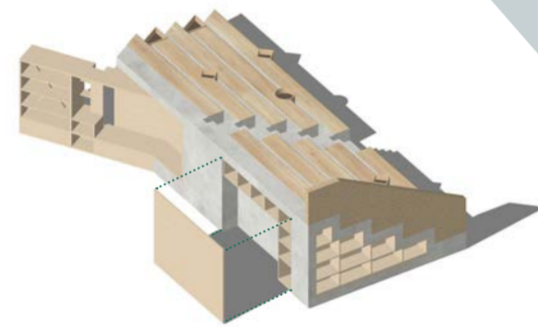
③ Lobby

As people enter the main space, they can see a built-in bookshelf, and all the books in the building are available for people to borrow. On the left side, a tour of the operation of the aquaponics farm leads to the auditorium. Behind the staircase is the entrance to the toilet and the workshop/meeting room. When the auditorium is in use, the users can go to the first floor from this staircase and not disturb them.



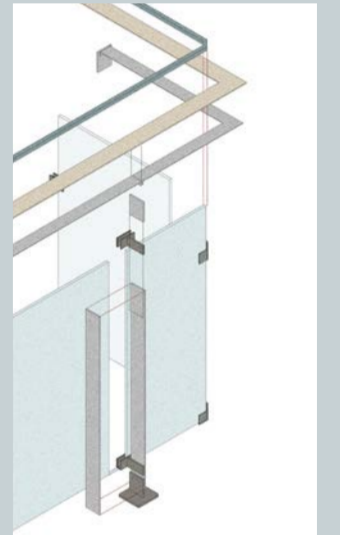
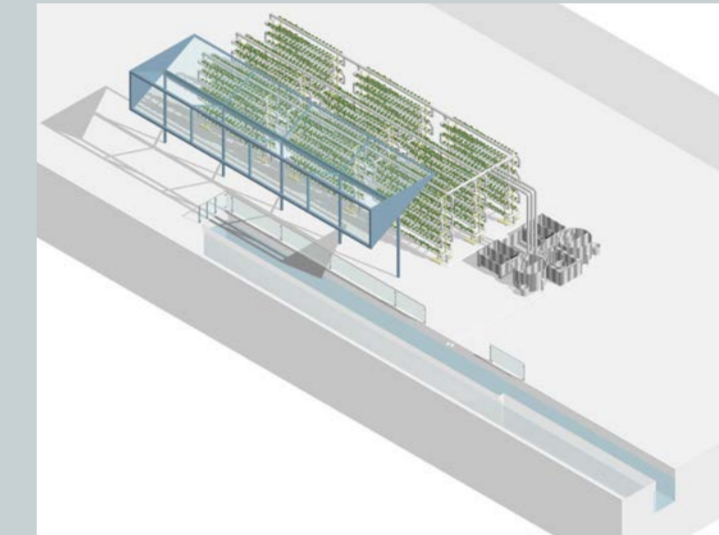
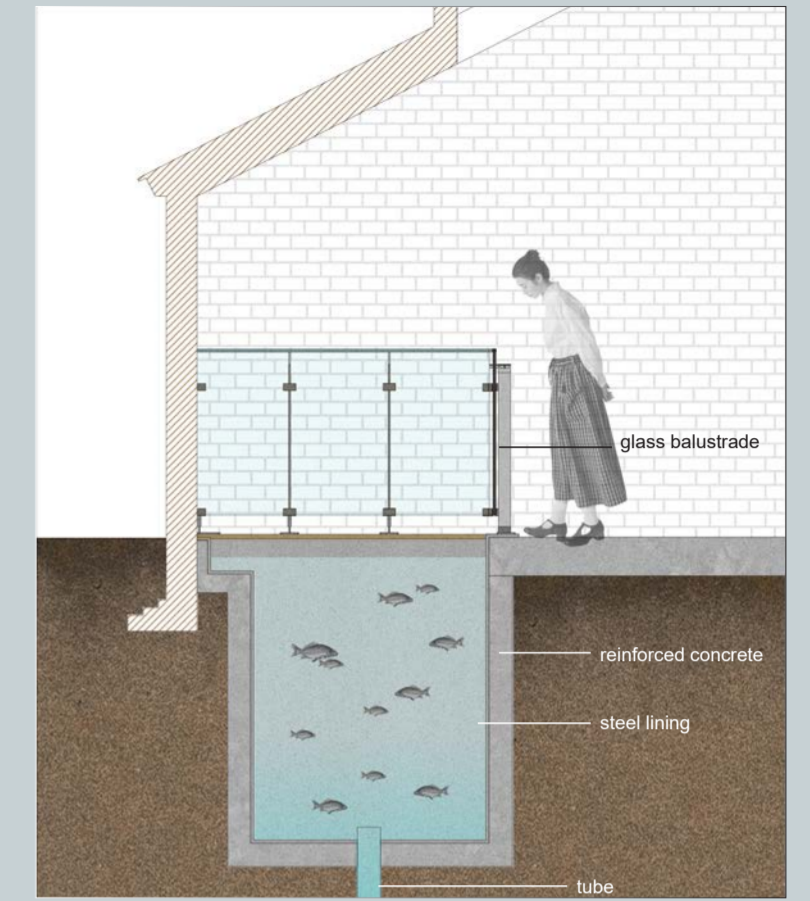
④ Auditorium

The auditorium welcomes people and students interested in aquaponics, gardening, environmental protection and dietary health for lectures and exchange programmes. During the spare time, it also serves as a casual reading and temporary working space, and the steps of the auditorium also support access to the first floor.



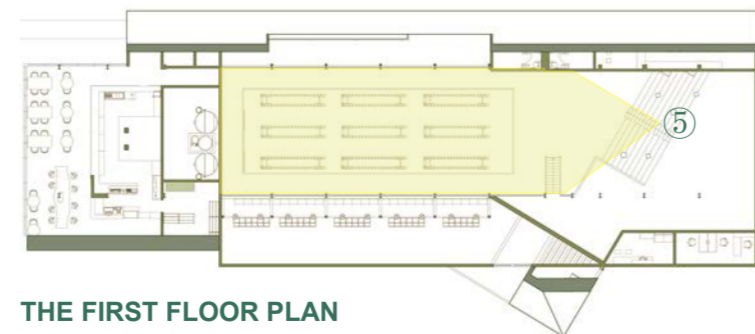
⑥ Fish Tank & Rainwater Harvesting Tank

The building uses water from both the River Medway adjacent to the building and rainwater harvesting. Filtered and purified water brought from the River Medway into the building is used for aquaponics in the Fish Tank as well as teaching people how aquaponics works. Transparent glass on the roof of the rainwater harvesting tank allows more sunlight into the room during the day and allows people to observe the rain scene during the rain.



⑤ The First Floor

The first floor is centred around the vertical aquaponics planting system, where visitors can take in this view.



THE FIRST FLOOR PLAN



⑦ Cafeteria & Café Bar

When people have finished their tour of the aquaponics farm, they will enter the Cafeteria and Café Bar. The cafeteria uses fresh ingredients grown in aquaponics farms. People interested in healthy eating and vegetarians are welcome to exchange and explore new recipes. The sunroom-style dining space allows for natural light and views of the river outside, and the Café Bar faces the entrance side of the building, which can also be accessed directly from the outside of the building to take orders.

