

Eadweard Muybridge Tower



Our story is based on Kingston's most famous resident Eadweard Muybridge however our twist involves him travelling forward in time to the present day as he encounters modern movement. The tower represents a multi-dimensional world that provokes a movement to be framed.

To communicate our design, we decided to model it at 1 to 10. All components are laser cut and modular. This means each step can be separated from the base and configured in a different way to make a new version of the tower.

We also decided to make a 1:1 detail of one of the steps. This was to help us as well as our client understand how the step and the frames would come together and to explore the different ways, we could make it.



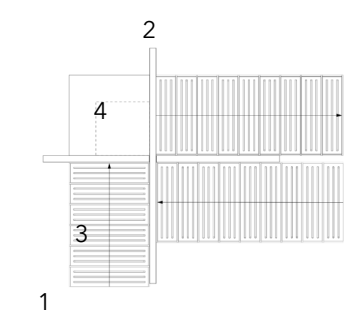
2



3

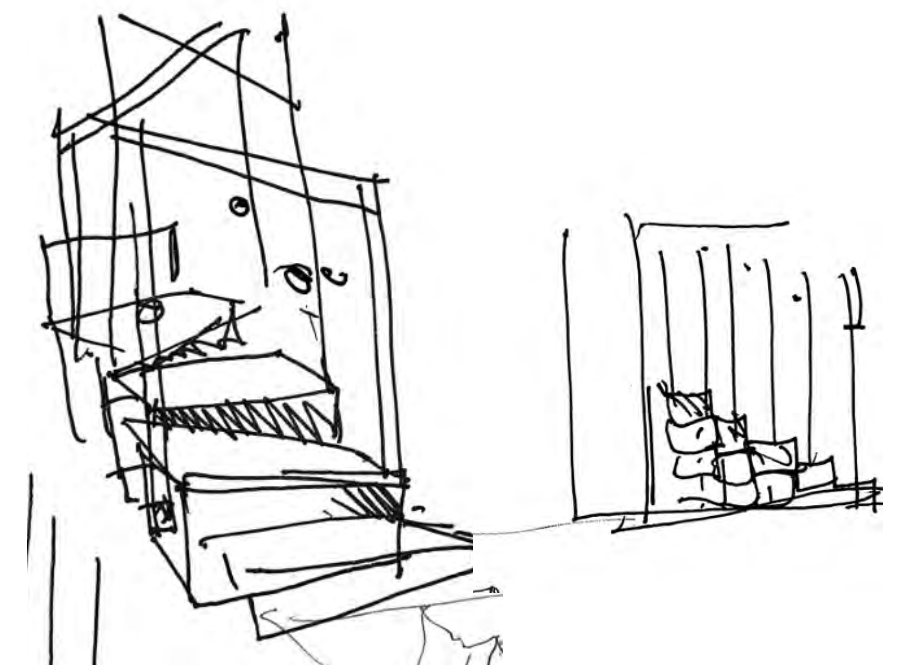


4

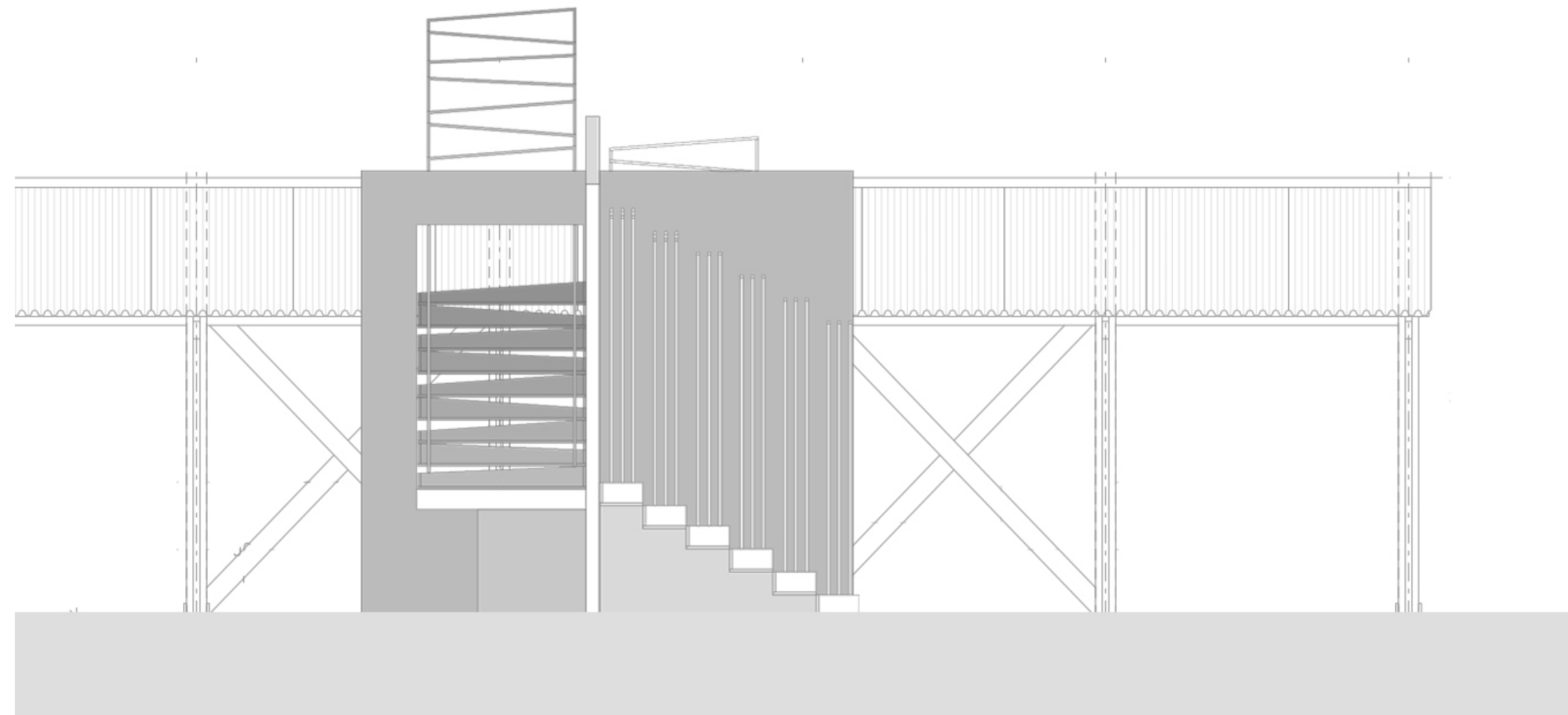
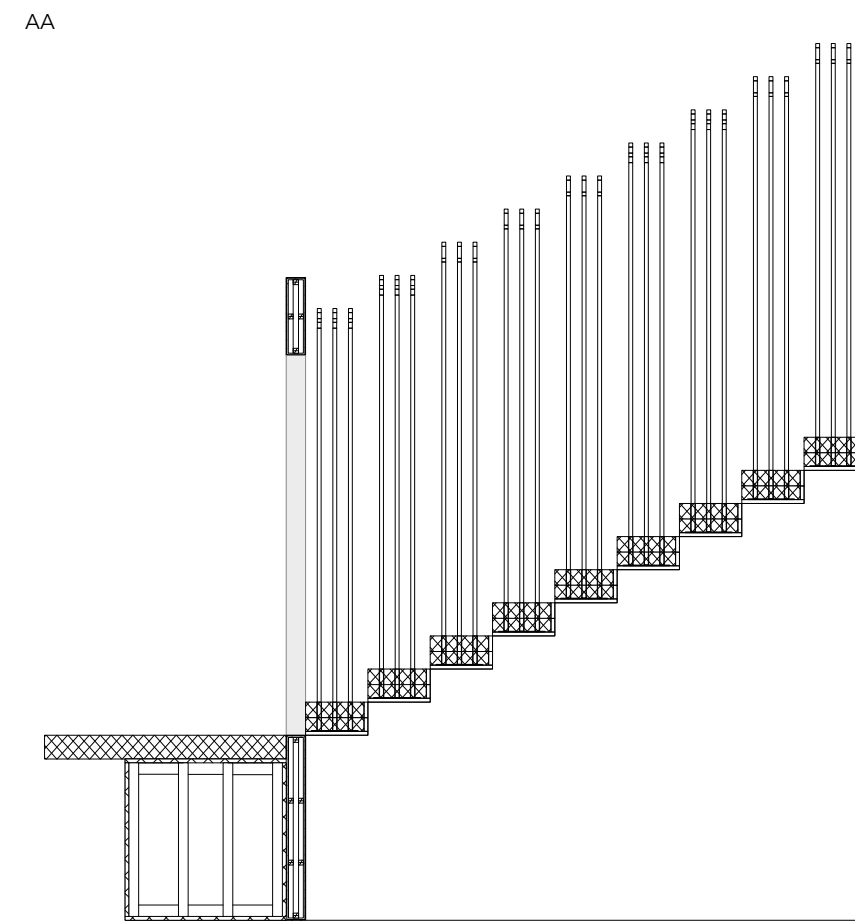
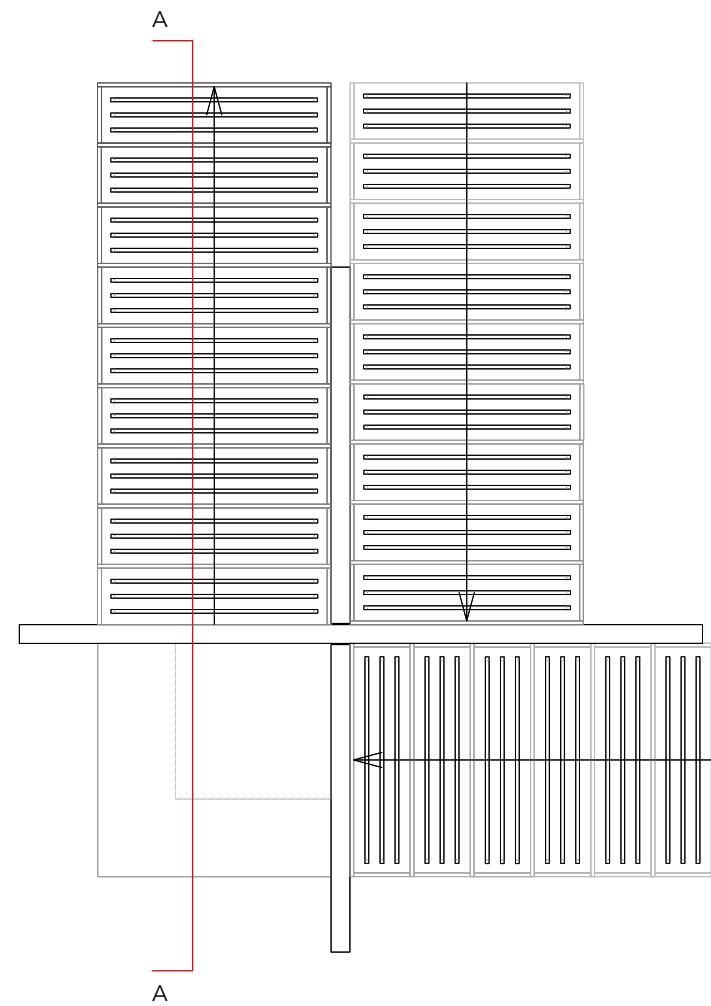


1

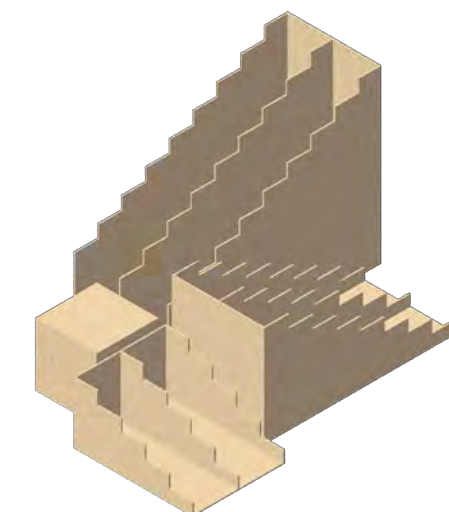
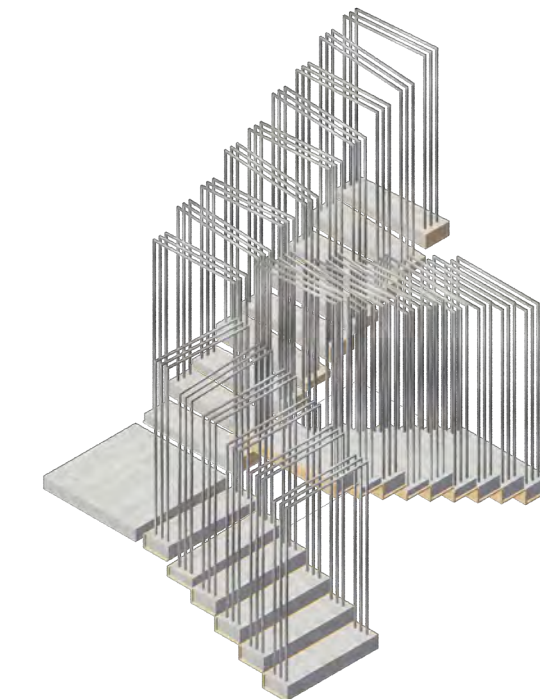
Sketch Model 1:10



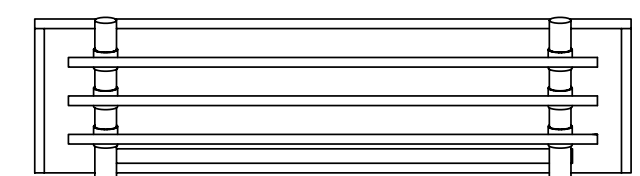
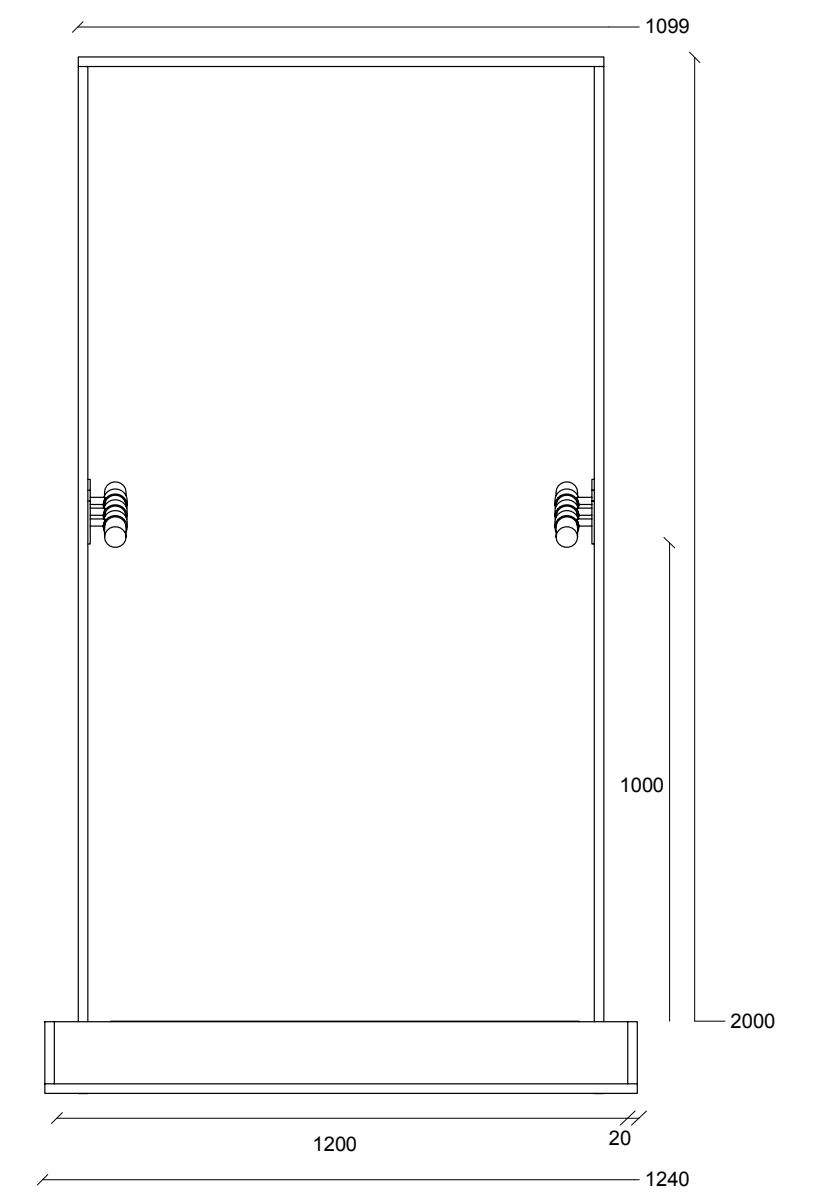
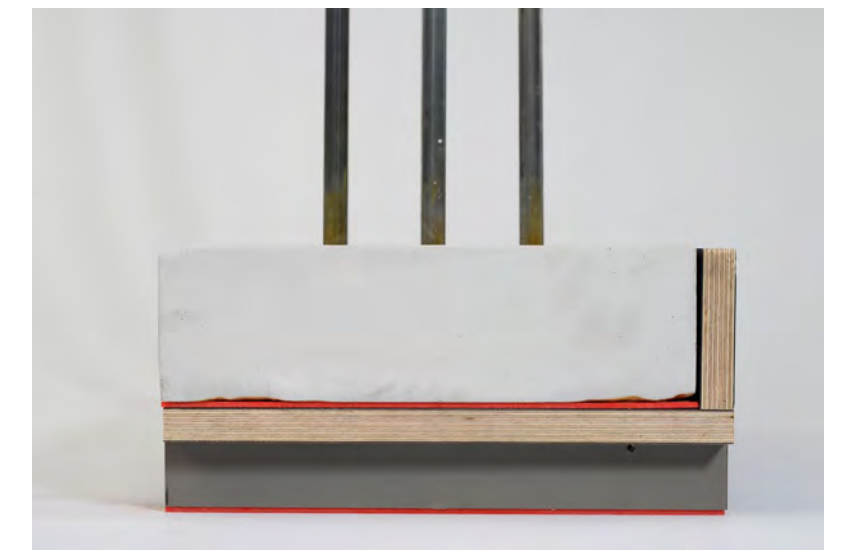
Orthographic Drawings + Materiality



- 1 REFLECTIVE ALUMINIUM
- 2 PLYWOOD
- 3 GALVANISED STEEL
- 4 GEOPOLYMER CONCRETE
- 5 RE-BAR

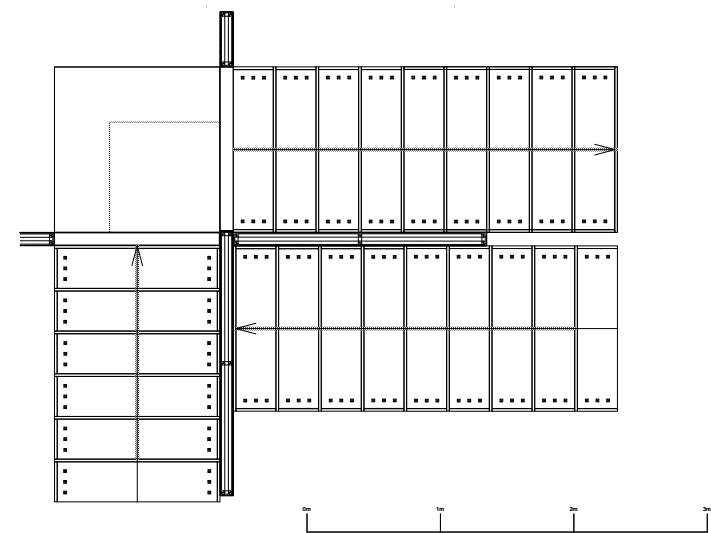
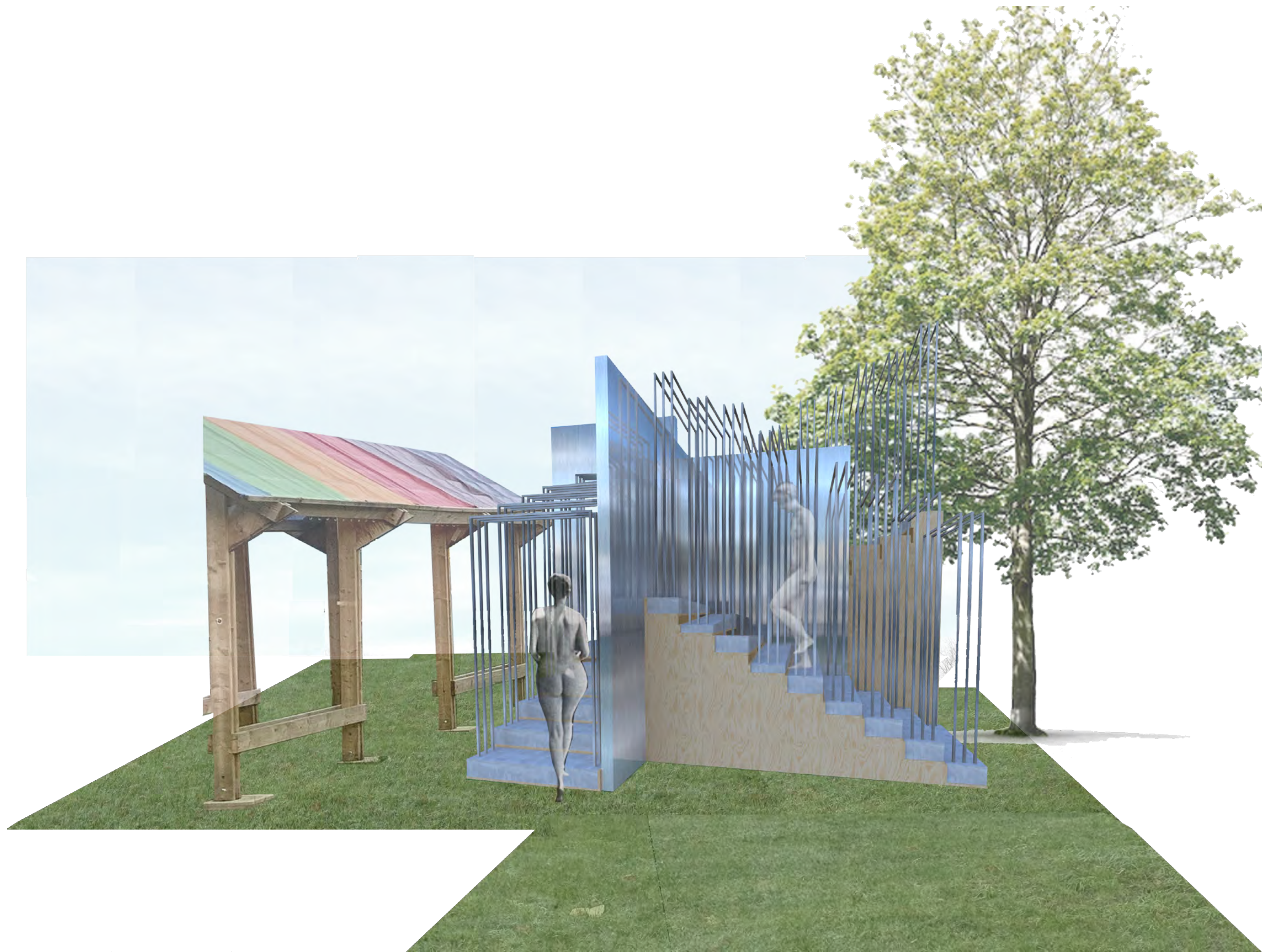


1:1 Stair Detail



Seething Wells Festival & Site

THE CLOISTERS VARIATION



SEETHING FESTIVAL



During the Project we set up a stall at the Seething Wells Festival, held by Community Brain. For this we decided to link Eadweard Muybridge and time travel together with a fun activity for families to take part in. We came up with an idea of having a photo booth where children can come and design common props from Muybridge's time and then get a photo transporting them back to 1870.