

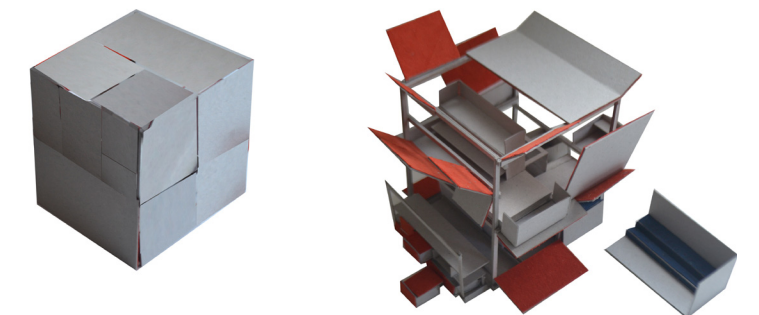


BRIEF:

To design a BARchive for Ben Kelly Design: a hybrid space between an archive and a bar. The intention of the cross-pollination aims to create a place in which interactions between people and archival objects can lead to innovation and creativity.

CONCEPT:

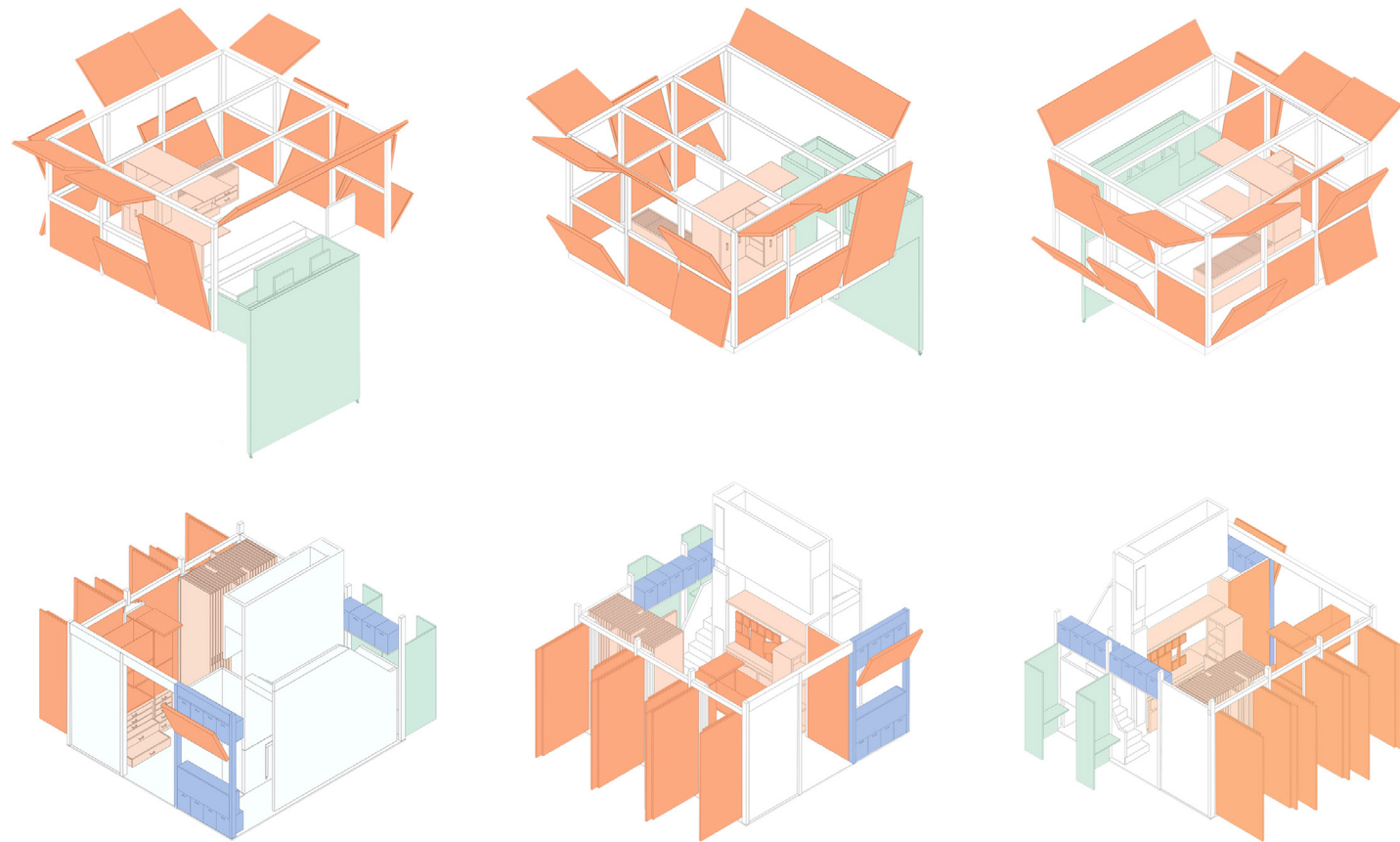
The project resulted in an adaptable, free standing structure with multiple openable panels to provide a flexible space that can be transformed into a study space, a speaker's platform, an exhibition space, or a meeting place in which the material of the BKD archive will become the incentive for a series of events and facilitate students, scholars, and lovers of design to be more "alive" to disciplines outside their own, and culture in its full breath. The layered object unfolds to reveal content within, inviting the audience to interact with the construction, discover and delve deeper into the work within the archive. This kinetic, enigmatic box gradually opens & closes throughout the day, creating tension between stasis and movement, reinforcing the idea of the archive as a catalyst.





Exploiting opportunities to work with hingers & pivoting panels to create an informal feel. Moveable planes resembling cupboards with space between for pictures.

The archive contains layers of media: traditional filing, large format prints. The cube: a legible iconic, readable form, enables a greater level of complexity & ambiguity of the elements within.

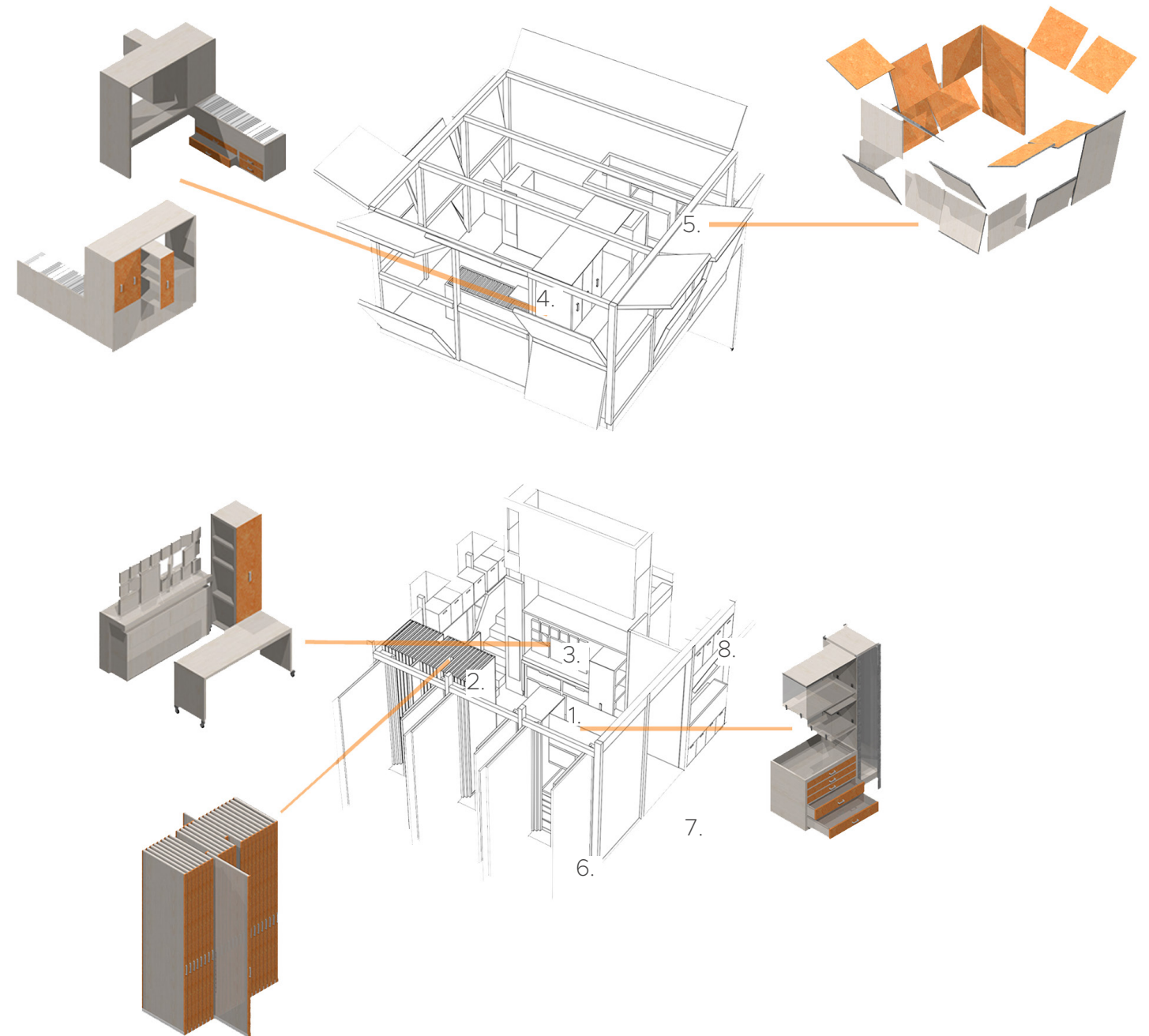


- To study & think
- To display
- To store
- To gather & share

Use zoning diagrams

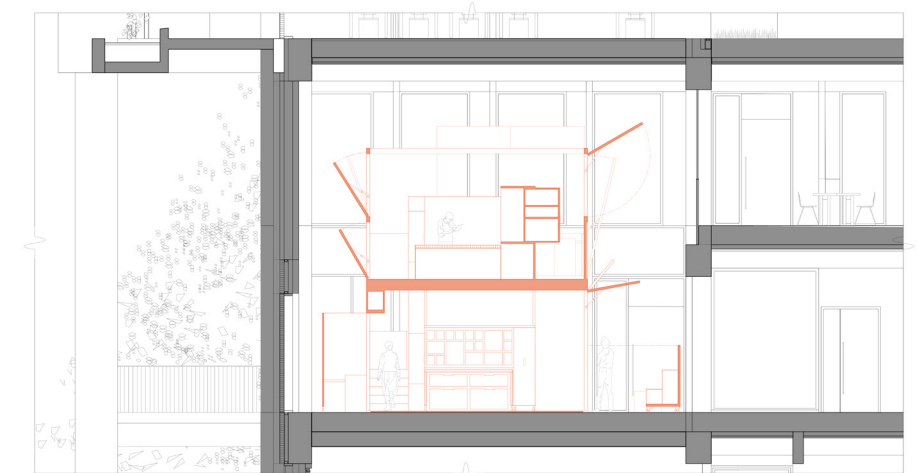
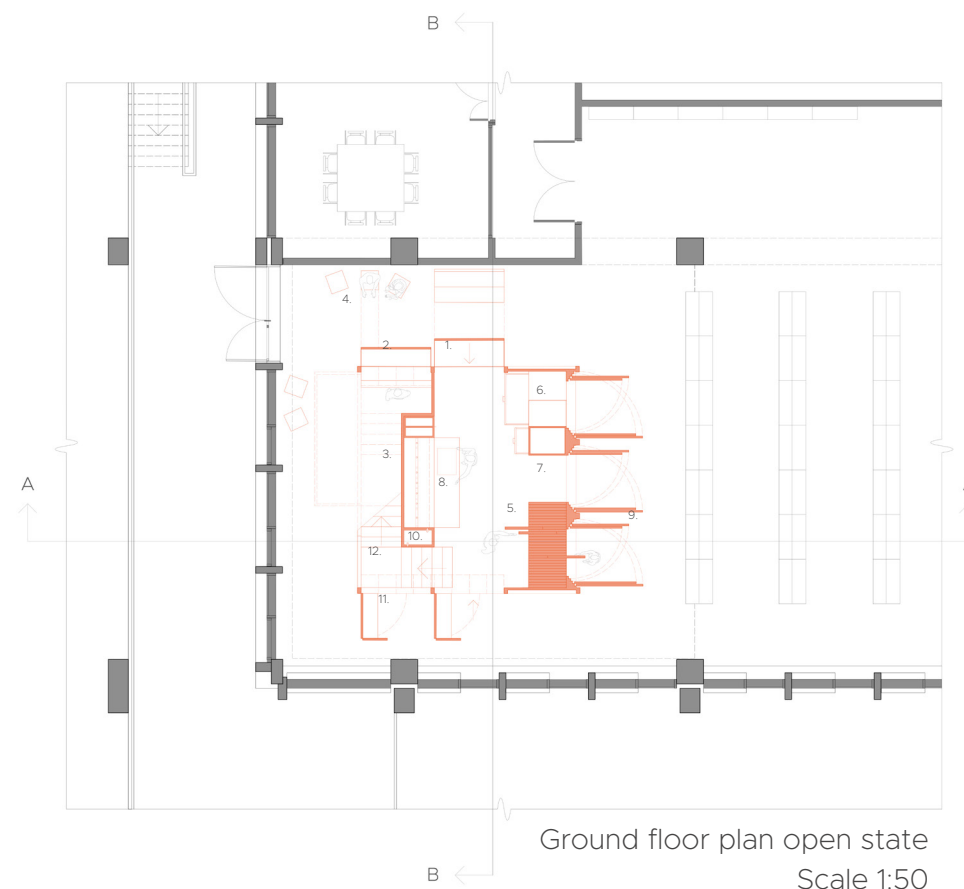
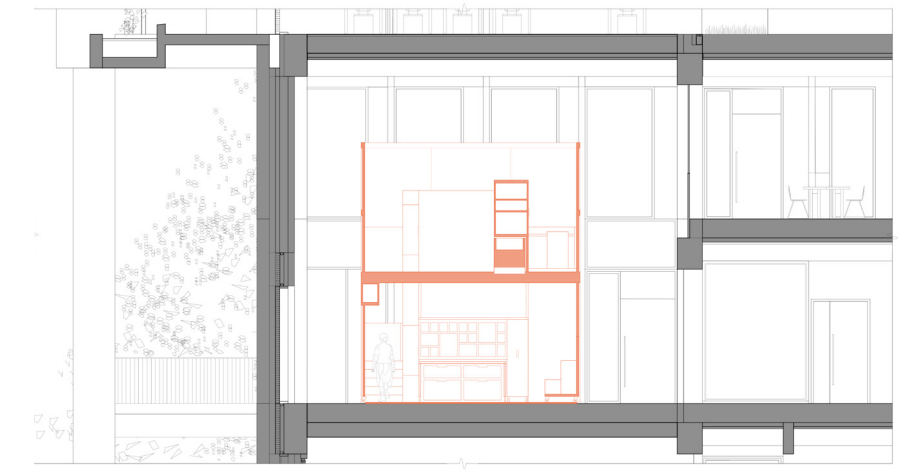
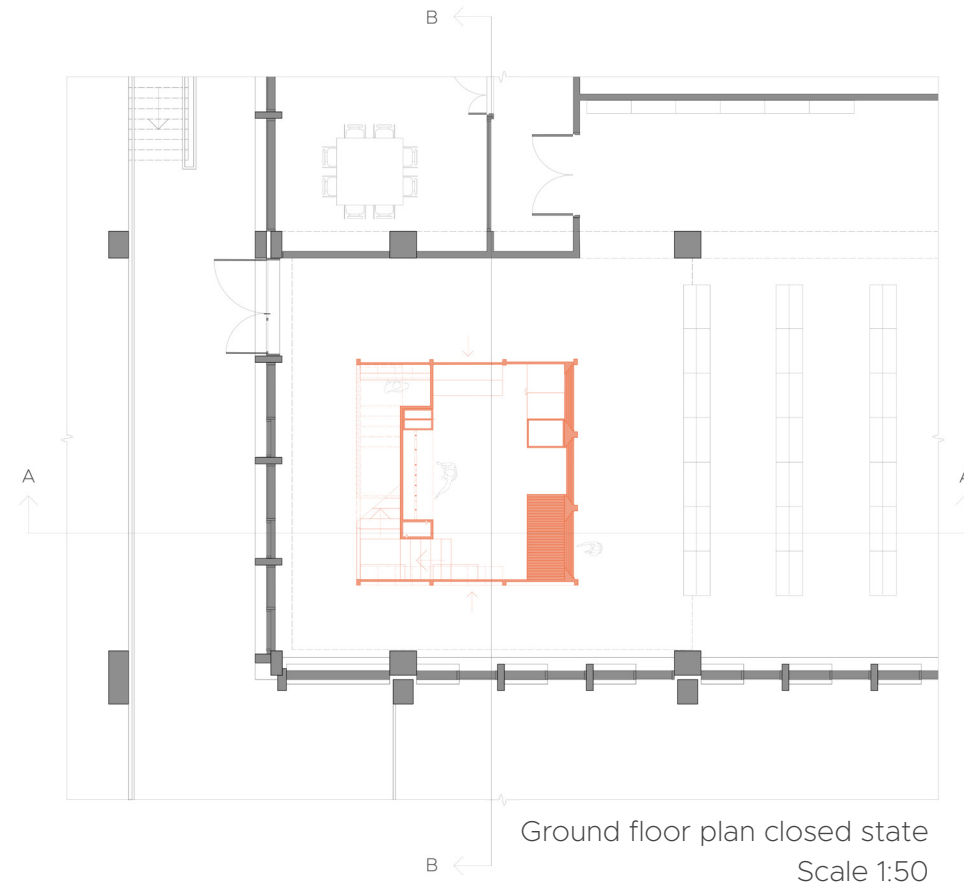
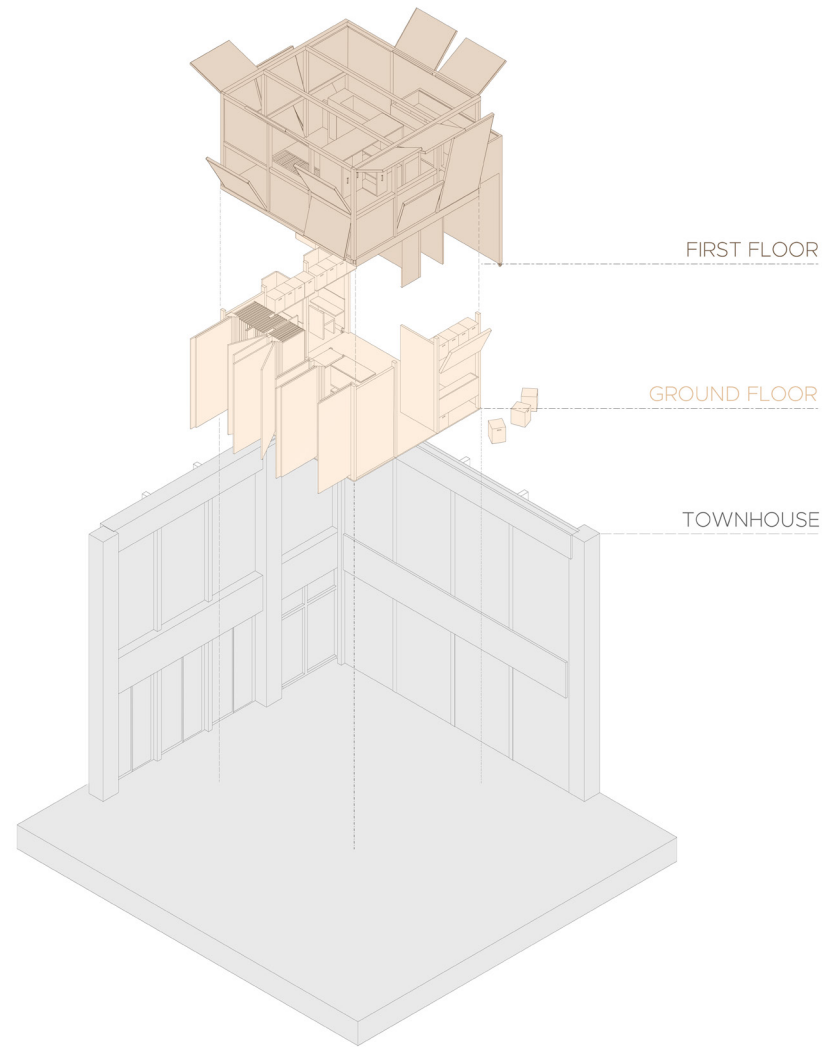
## ZONING

Balance of activity on each floor to enable inclusivity, with a small pulley system to enable a rotation of work within the archive across each level. The ground floor is interactive, open & immersive and the first floor is more study and storage oriented and therefore more private with spaces to study, reflect and think



Content of the archive diagram

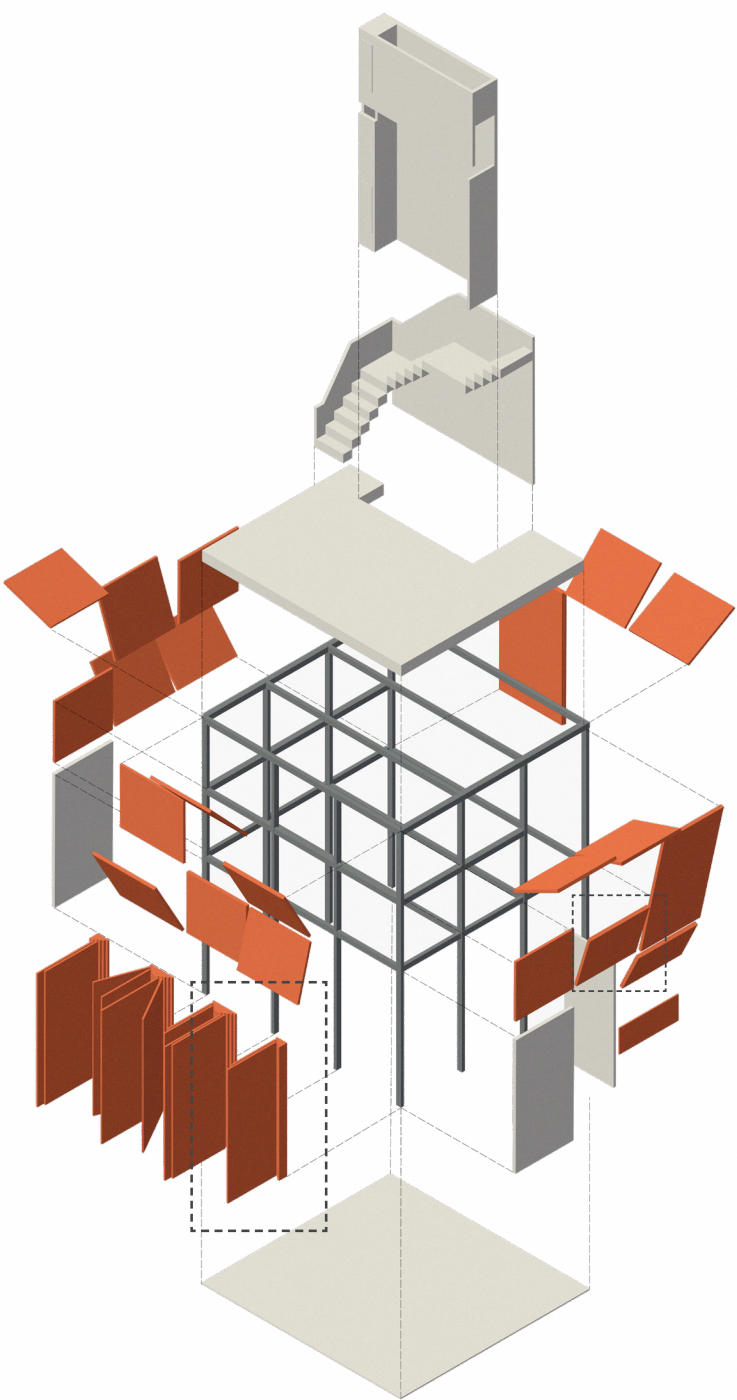




Interactive, open, immersive

1. Main entrance
2. Bar
3. Bar storage
4. Pull out seating
5. Interactive archive wall with sliding screens
6. Display shelving for objects and drawers for storage of A3 pitch files
7. Entrance through display panels
8. Pull out table
9. Interactive wall with moveable panels
10. Small pulley system allowing for material to be regularly circulated
11. Pull out study desks
12. Staircase leading to floor above





- Main framework
- Secondary structure
- Cladding



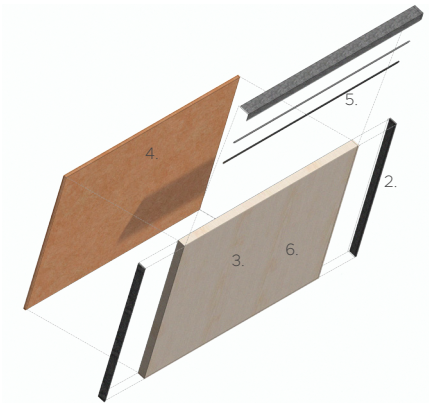
Carlo Scarpa display casings

UPPER DISPLAY PANELS

Display panel becomes frame, combined with standard window opening system for high level display. Steel plates on the sides can be removed to slide work in and out horizontally.



- 1. 3mm steel powder coated
- 2. 3mm steel plate
- 3. 24mm ply panel
- 4. Linoleum
- 5. 10x10mm LED channel
- 6. 12mm toughened glass
- 7. Artwork



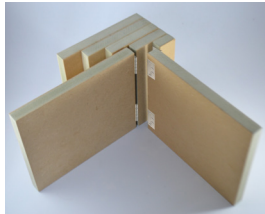
Display panel frame integrated



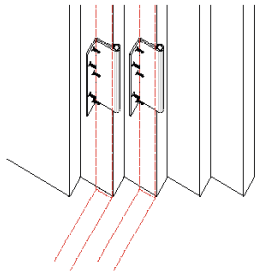
Carlo Scarpa ziggurat

LOWER DISPLAY PANELS

Tiered timber frame allows the moveable planes to unfold and slot back into the structure on top of one another, hinged to frame like cupboards with space between for artwork.



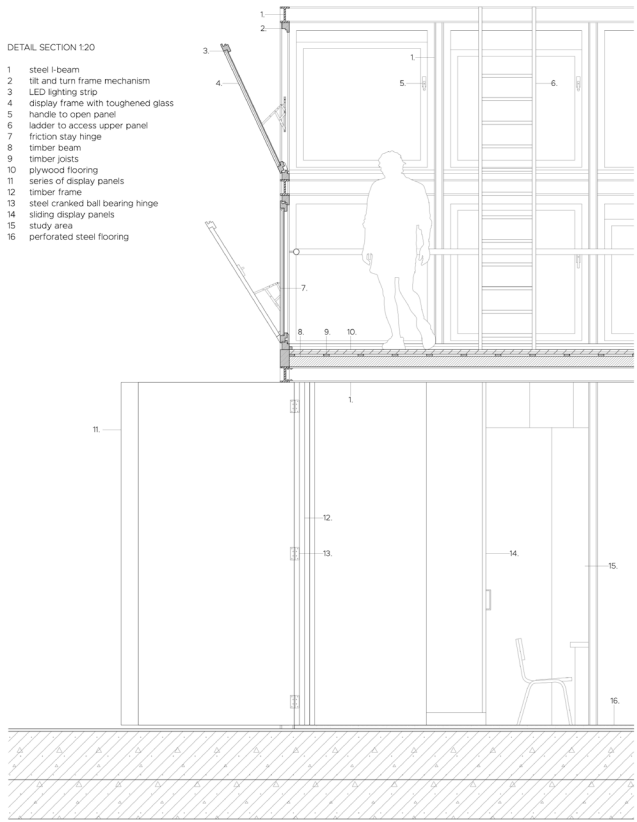
Detail model scale 1:1



Hinge detail

The structure consists of a series of steel beams bolted together to form a framework, clad with standard-sized panels of birch ply for structural and display purposes and to minimise cutting waste. The mechanisms used within this project make use of standard readymades such

as a simple tilt and turn window system to extend the upper panels from the main framework for high level display to an audience below. The lower display panels fold out like cupboards, drawing reference from the Sir John Soane Painting Gallery with folding walls for an immersive, joyful experience.

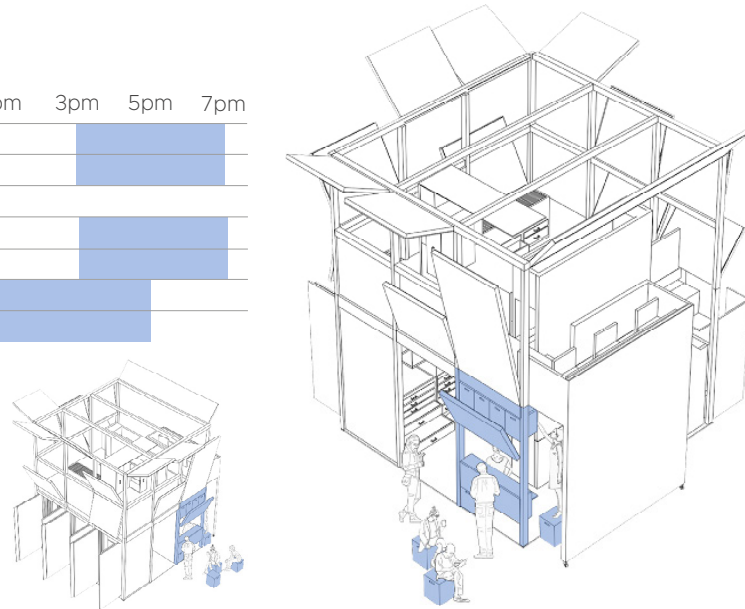


Detail section



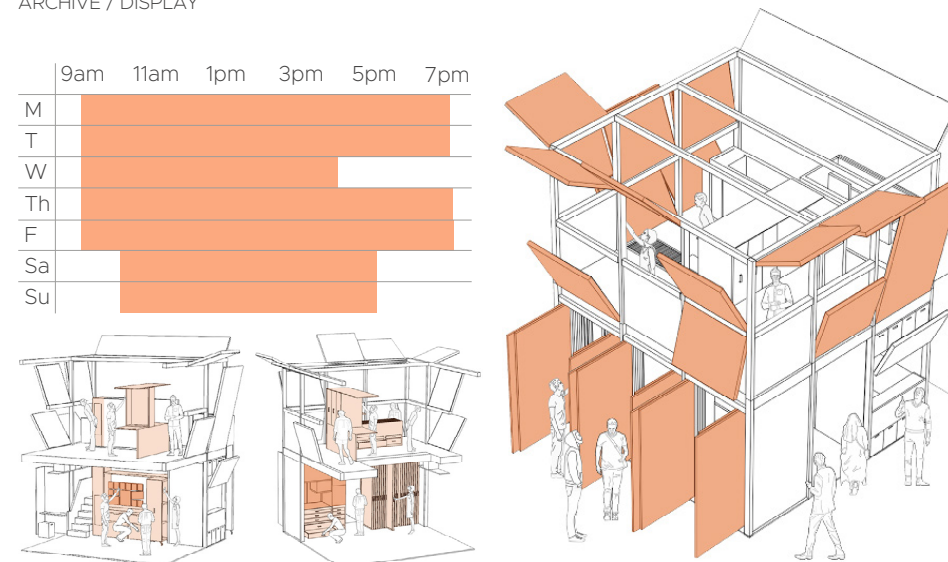
## BAR

	9am	11am	1pm	3pm	5pm	7pm
M						
T						
W						
Th						
F						
Sa						
Su						



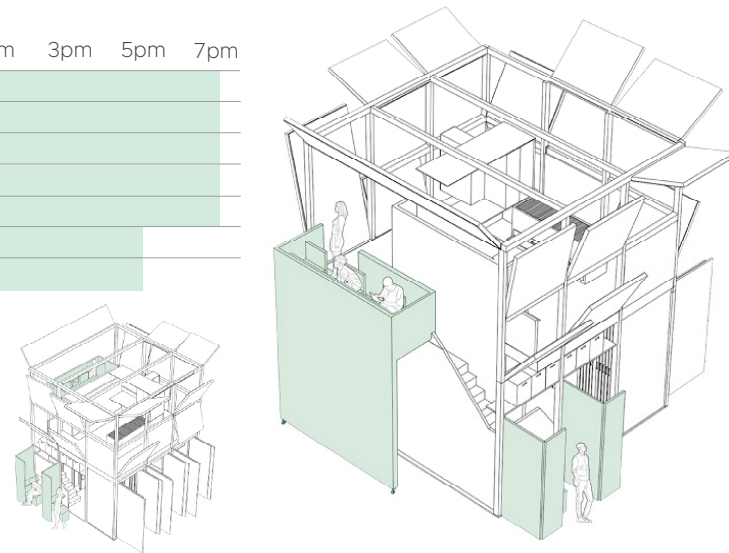
## ARCHIVE / DISPLAY

	9am	11am	1pm	3pm	5pm	7pm
M						
T						
W						
Th						
F						
Sa						
Su						



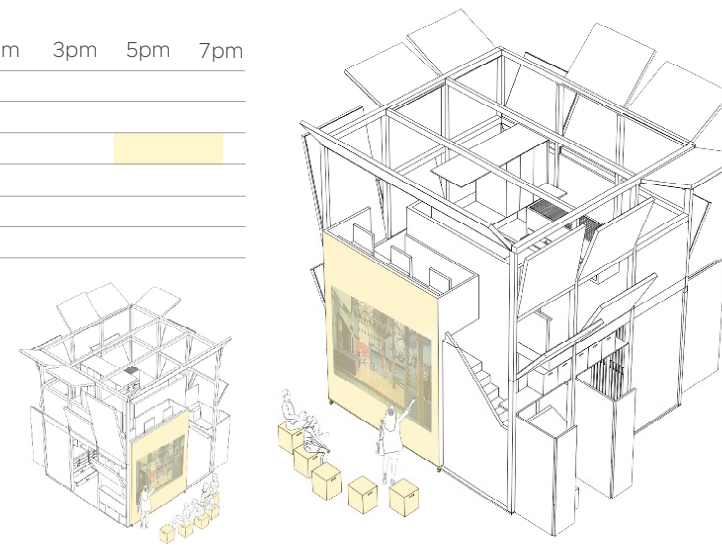
## STUDY AREA

	9am	11am	1pm	3pm	5pm	7pm
M						
T						
W						
Th						
F						
Sa						
Su						

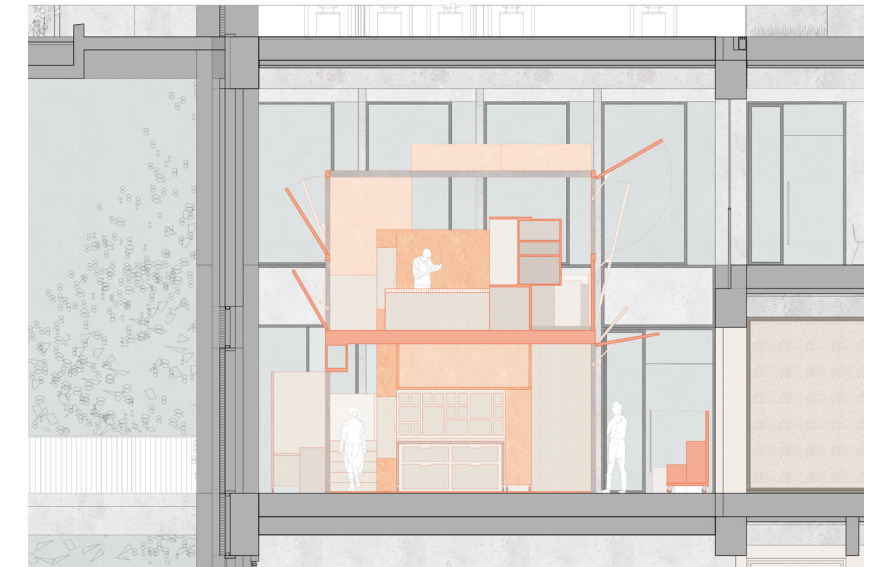



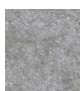



## LECTURE / PRESENTATION

	9am	11am	1pm	3pm	5pm	7pm
M						
T						
W						
Th						
F						
Sa						
Su						



Scenario of use diagrams



-  Birch ply panels  
Light weight, strong, rigid material
-  Steel beams  
Bolted together and taken apart
-  Elefant grating floor  
Perforated steel flooring
-  Linoleum  
100% biodegradable material
-  Cork  
Acoustics, low density, lightweight

A series of diagrams highlighting various parts of the structure and how these accommodate the variety of activities within and around it at different times throughout the day. These enabled the rationalisation of each panel and its function, as well as clarifying the journey of the structures everyday use (partially open) in comparison to its use for an event (fully open).

Hard exterior in harmony with surrounding setting and vibrant interior to reinforce sense of dynamism, sampling colours from the projects of Ben Kelly.

Steel frame to create an industrial aesthetic and to highlight the frame as fixed in comparison with the moveable vertical and horizontal planes