

IKEA SILO

The brief for our final major project was to adapt and reuse the listed Silo D building located in the Royal Docks, Newham. We had to come up with a worthwhile use that incorporates a circular activity.

The Ikea Silo is a space to explore the future of furniture and challenge the notion that affordable furniture is disposable. The project is inspired by the recent efforts by Ikea to become a circular brand such as partnering with Ellen MacArthur and funding Space10 a sustainable design research lab.

A visitors journey through the building would begin on the ground floor where they can check in at reception and visit the cafe and exhibition space. From the ground floor the lift and main stairs can be used to access the basement to collect a trolley workstation which will be taken up to the first and second floors as visitors make their way around the archive. Workshops located in the side towers of Silo D can be accessed from both the first and second floors via the circulation tunnels.

The workshops provide a space for designers, students and the community to collaborate and learn. The donation room and swap shelf allow all members of the community to have access to furniture that may otherwise end up in landfill. The archive allows those in the community and beyond to access spare parts and fix up their existing furniture instead of replacing the entire product and creating further demand for new furniture that is not sustainable.

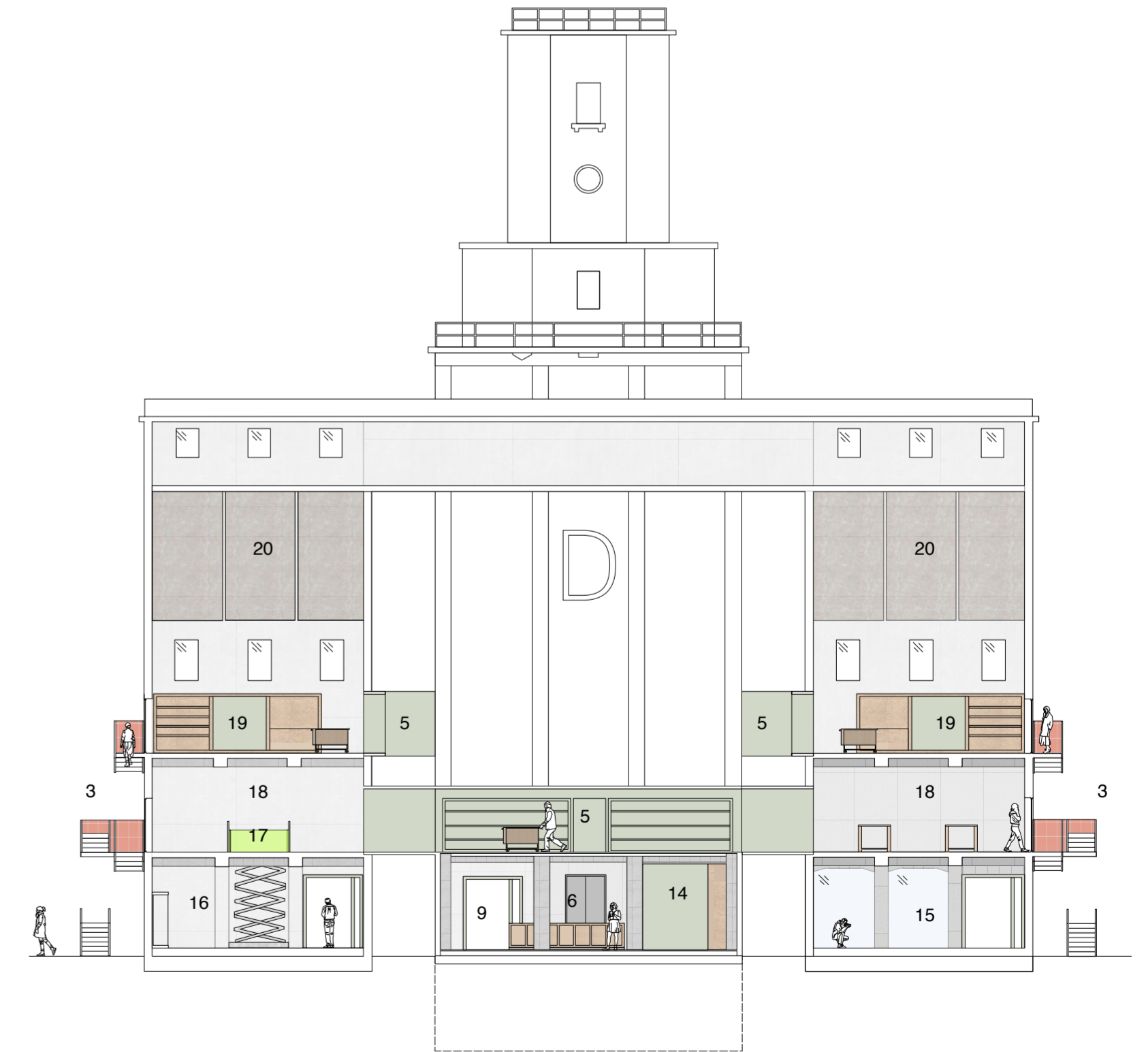
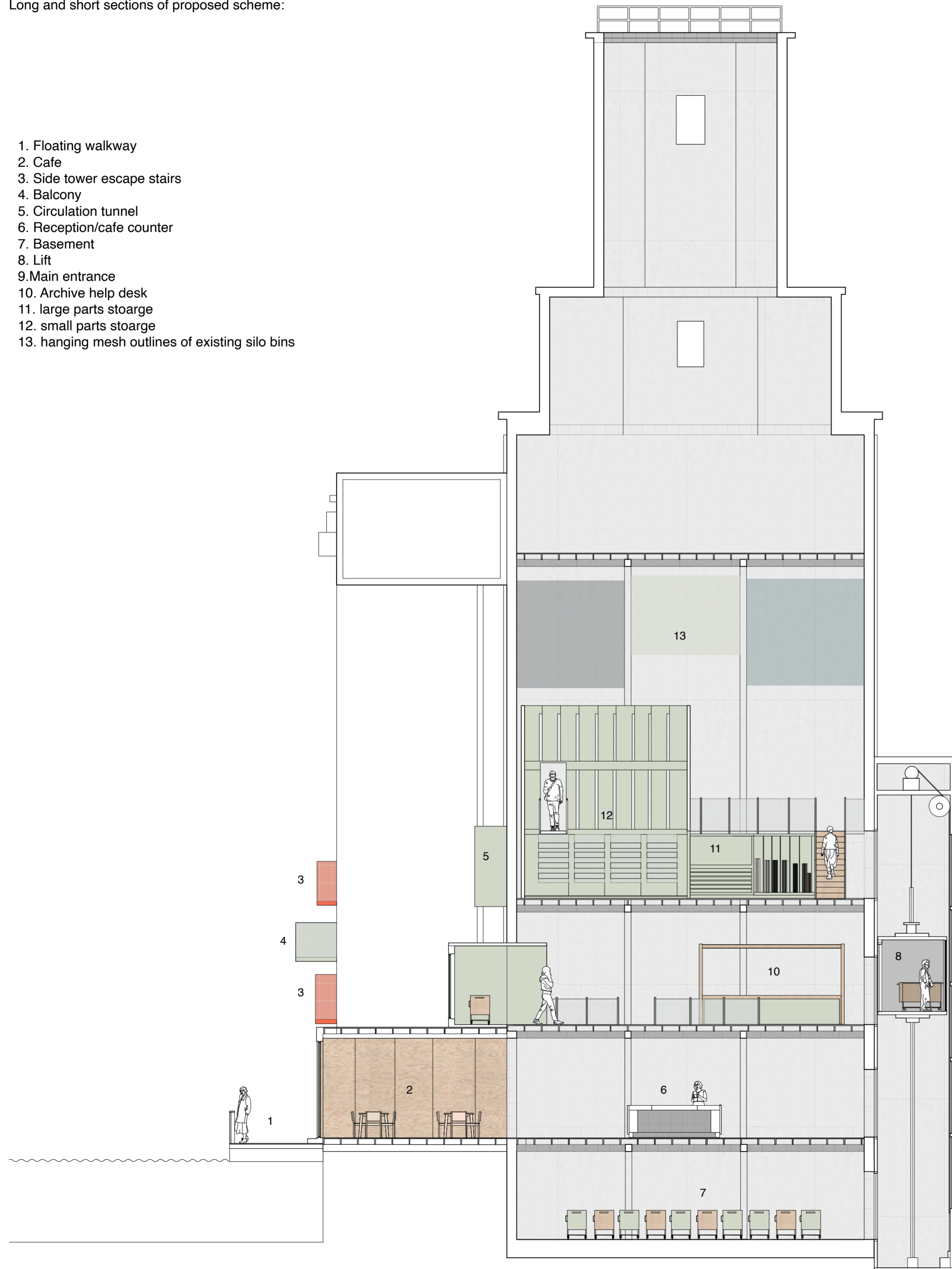
I set out to design a space that can be enjoyed and utilised by a wide range of people and therefore involve more people in a sustainable movement. I believe sometimes practising sustainable living can feel uninclusive and difficult to those who cannot afford to shop from cutting edge circular brands. A collaboration with a global and highly accessible brand like Ikea allows the message of recycling, reusing and appreciating our furniture to be widely spread and impact the average household, not just those who are already inclined to practice sustainable living.



Long and short sections of proposed scheme:

- 1. Floating walkway
- 2. Cafe
- 3. Side tower escape stairs
- 4. Balcony
- 5. Circulation tunnel
- 6. Reception/cafe counter
- 7. Basement
- 8. Lift
- 9. Main entrance
- 10. Archive help desk
- 11. large parts stoarge
- 12. small parts stoarge
- 13. hanging mesh outlines of existing silo bins

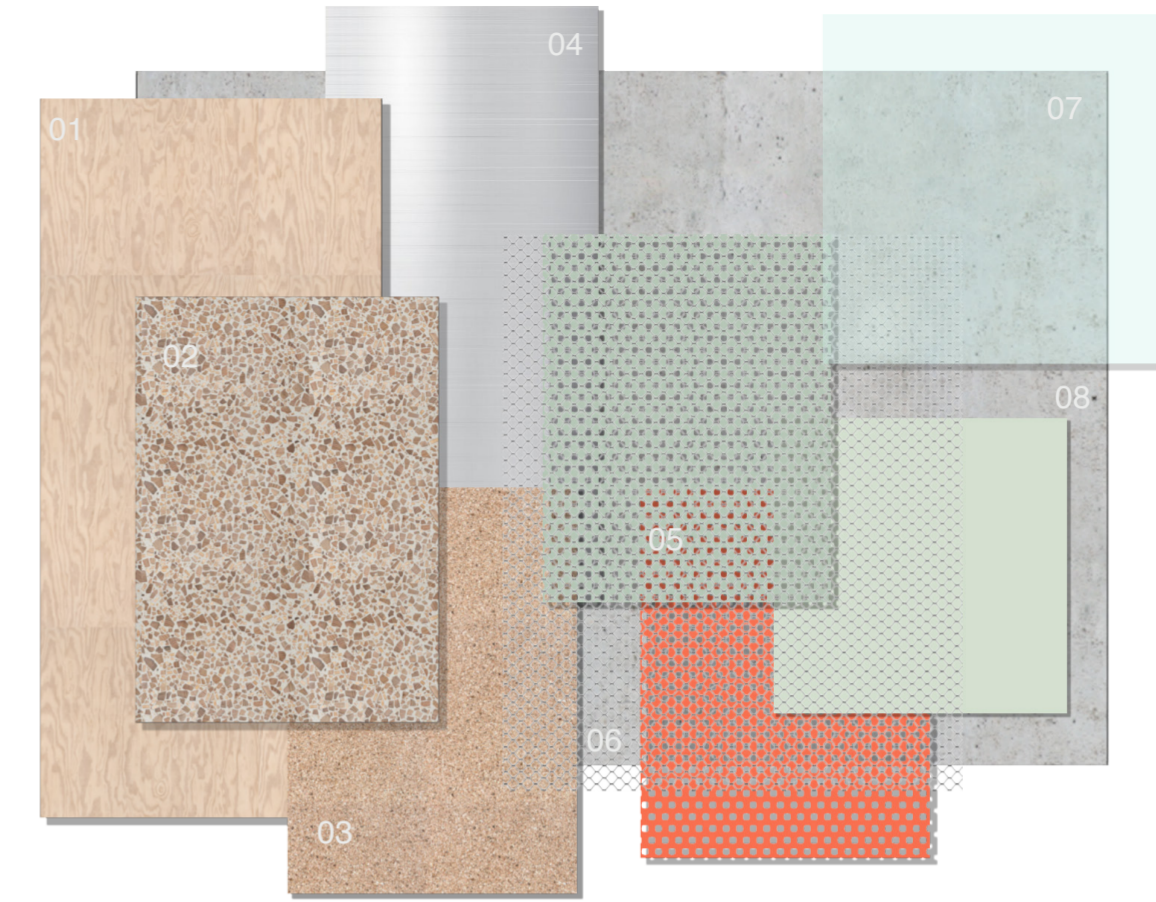
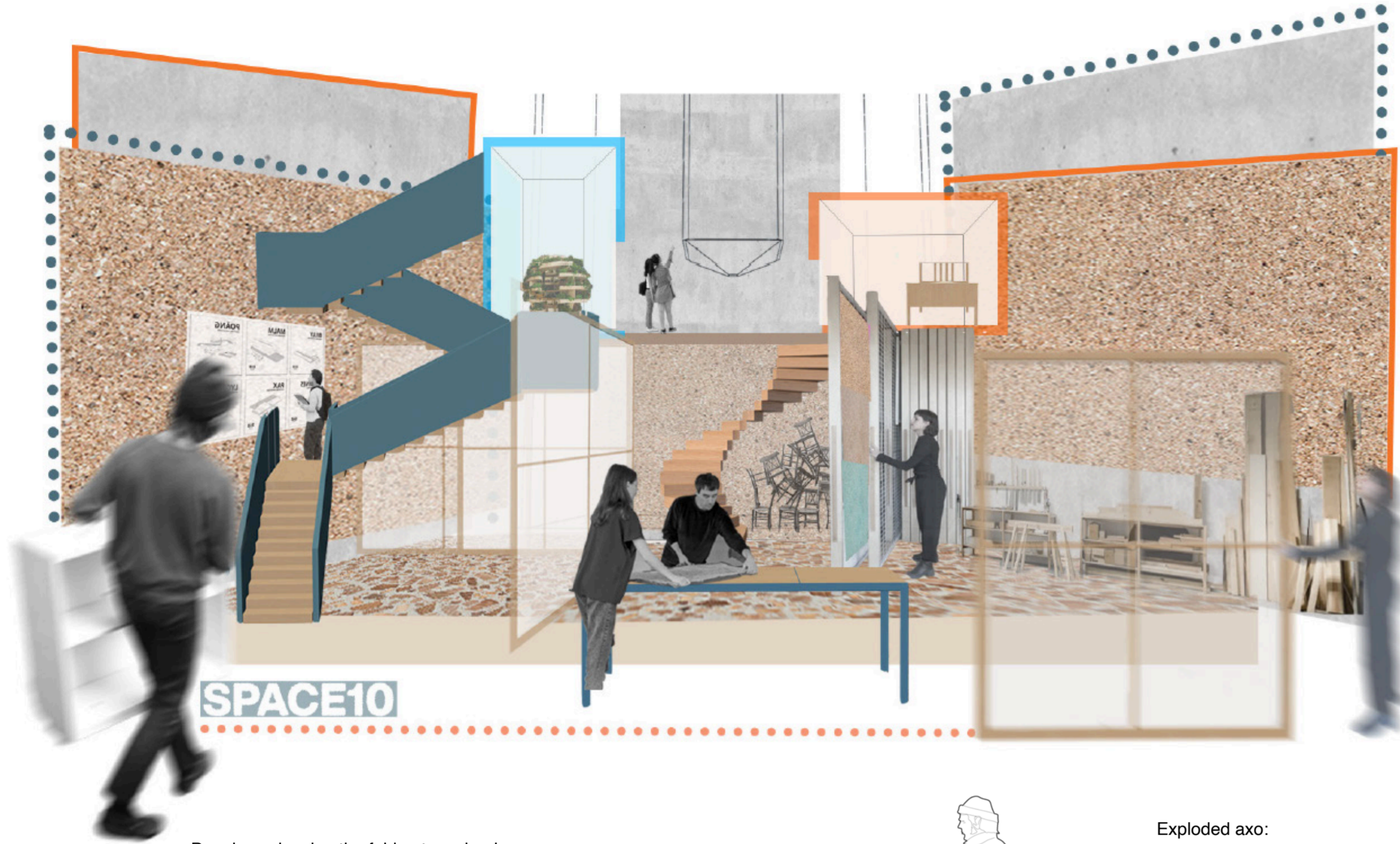
- 3. Side tower escape stairs
- 5. Circulation tunnel
- 6. Reception/cafe counter
- 9. Main entrance
- 14. Toilets
- 15. Exhibition space
- 16. Post room/collection room
- 17. Goods lift
- 18. Workshop
- 19. Shared workshop
- 20. Existing side tower grain bins



Short section @ 1.100 A2

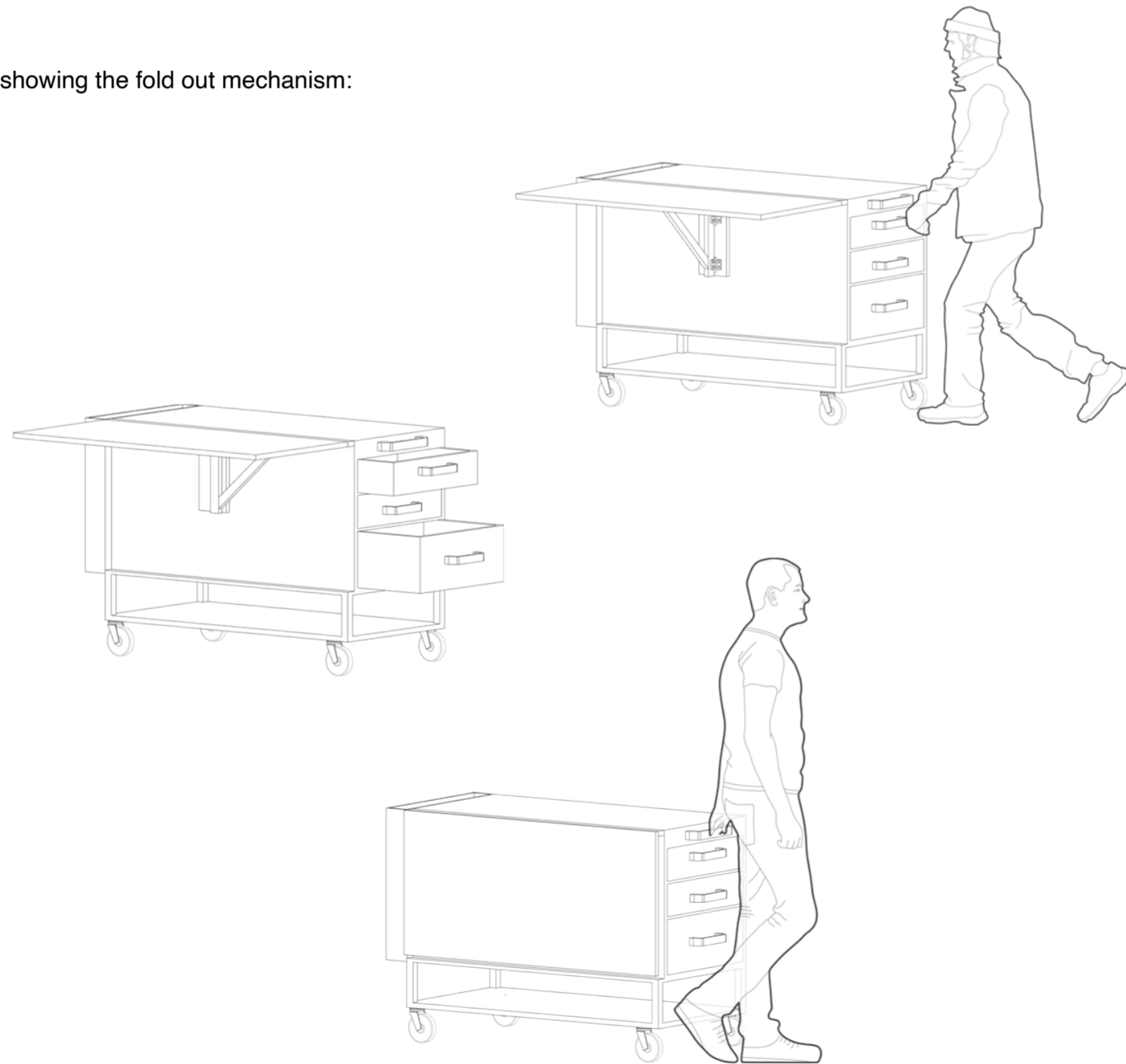
Long section @ 1.200 A2

Concept collage, materiality and portable workstation trolley:

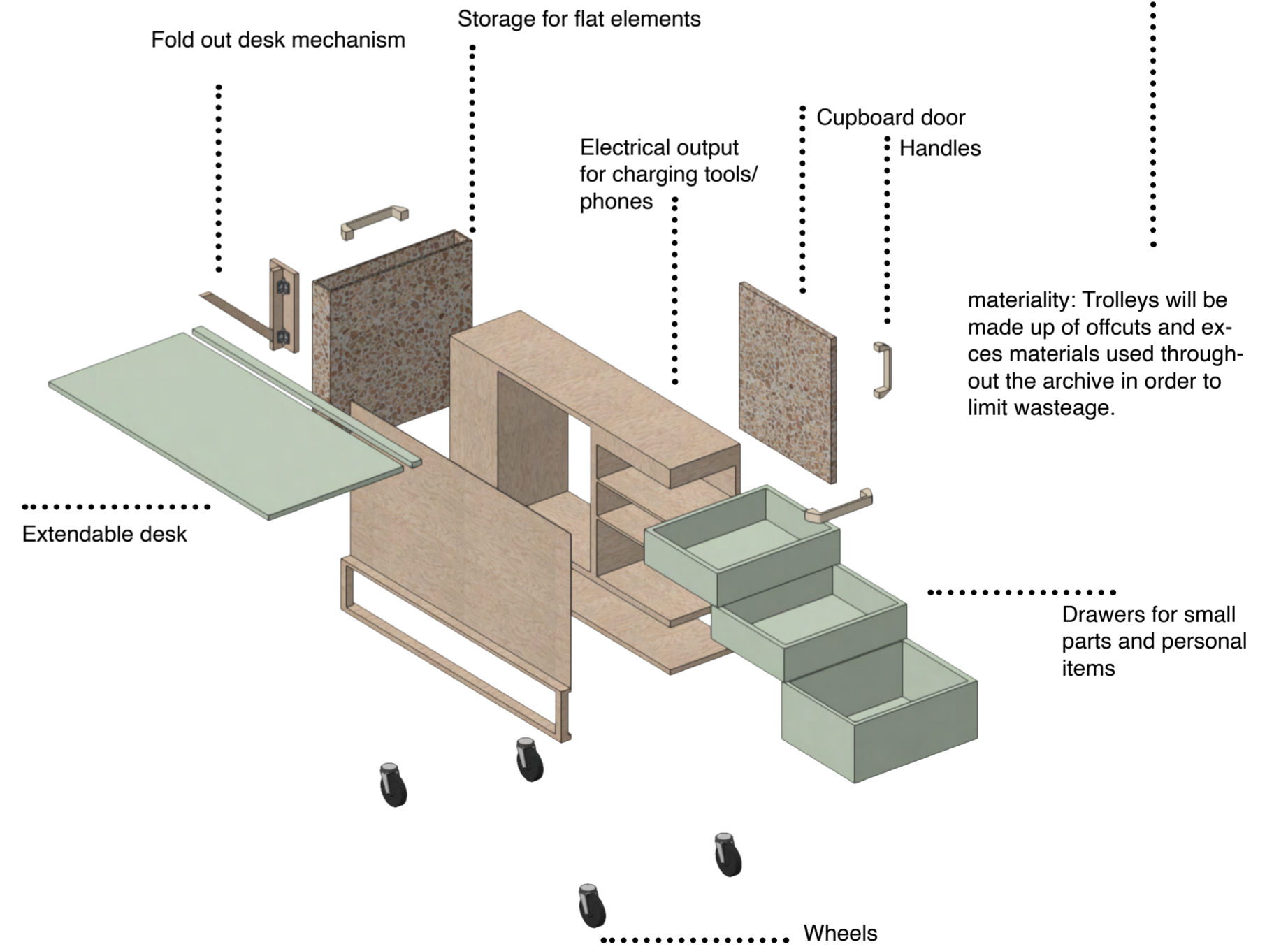


- 01. Birch plywood
Brand: Alpi wood
- 02. Wood chip terrazzo
Brand: Foresso
made in the UK using recycled wood chips.
- 03. Cork:
sustainable material harvested without cutting down the tree its grown from, can also be recycled
- 04. Stainless steel:
can be 100% recycled
- 05. Perforated steel sheet (painted):
can be 100% recycled
- 06. Metal mesh
- 07. Glass:
can be 100% recycled
- 08. Existing concrete:
solid concrete structure that used to hold tonnes of grain

Drawings showing the fold out mechanism:

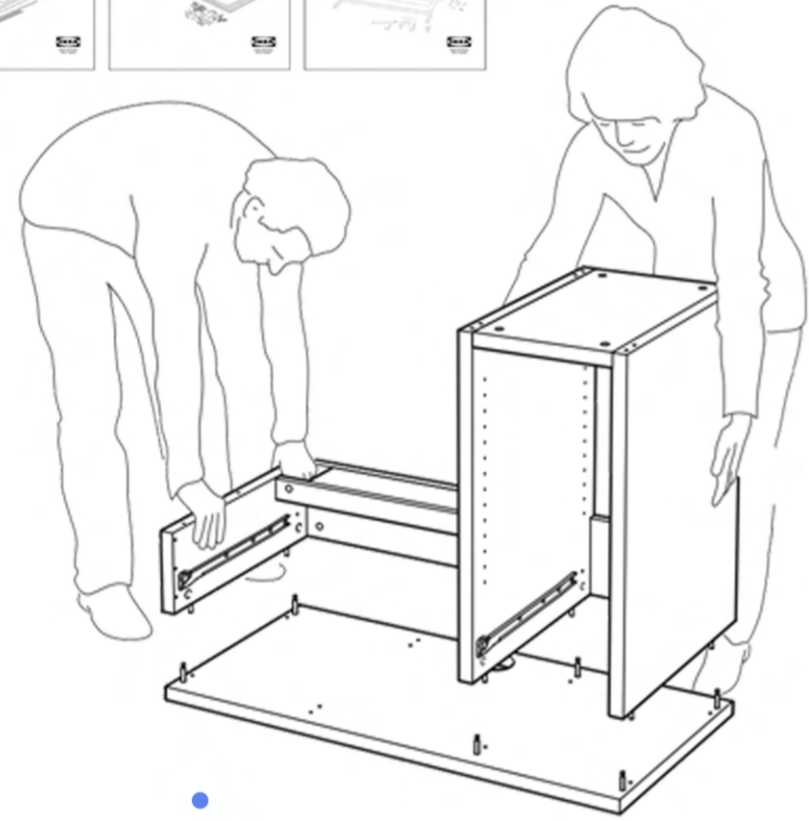


Exploded axo:



materiality: Trolleys will be made up of offcuts and excess materials used throughout the archive in order to limit wastage.

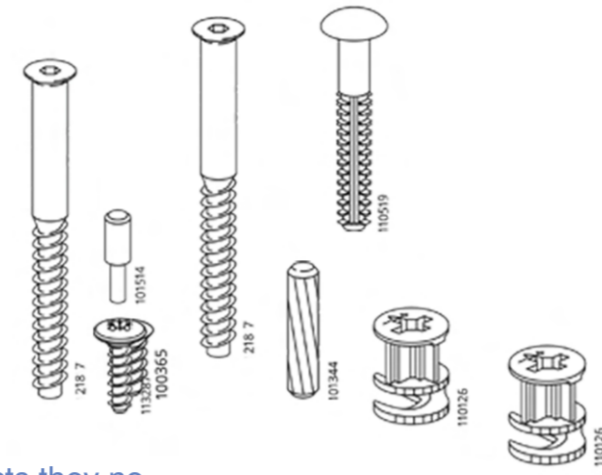
IKEA SILO



Ikea customers with products they no longer use or need can disassemble them using the new Ikea disassembly instructions they have released as part of new efforts to become circular.

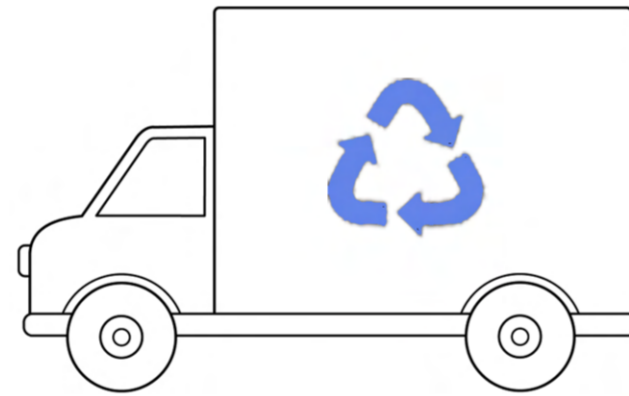
They can also donate whole furniture pieces which will be displayed on the community swap shelf, for those who just want

The workshops at the silo are open to everyone in the community but even those not local can make use of the archive by ordering spare parts and assembling at home as you would usually with ikea products.

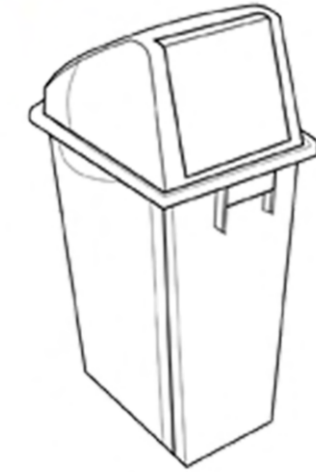


The Ikea silo will take the fixings as well as larger flat elements of all furniture recycled at the silo.

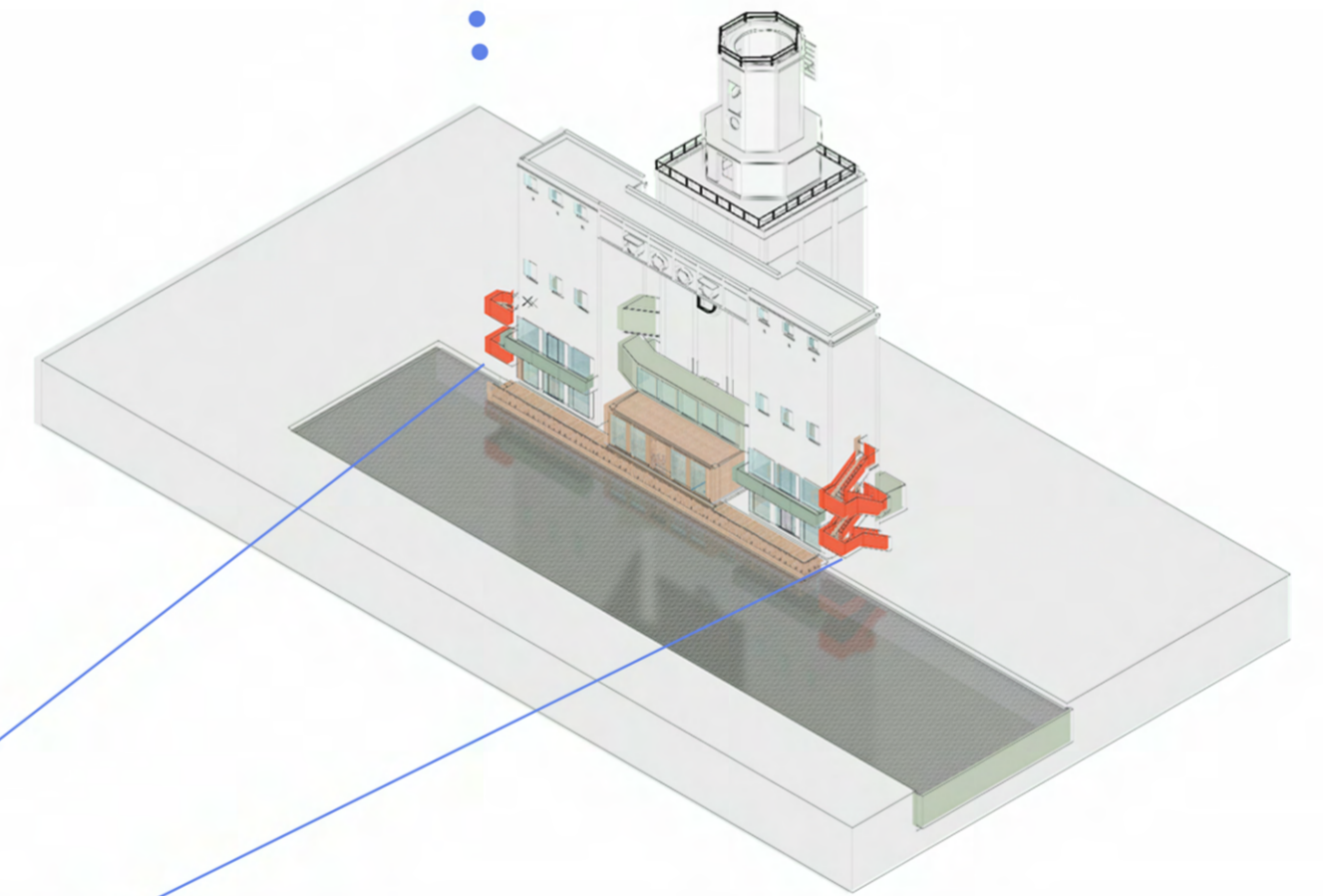
The Ikea silo spare parts database will be accessible online so customers can order spare parts without visiting the silo. Users of the workshop can also have larger built furniture elements delivered to them.



Once at the silo the recycled elements will be arranged and stored in the archive.

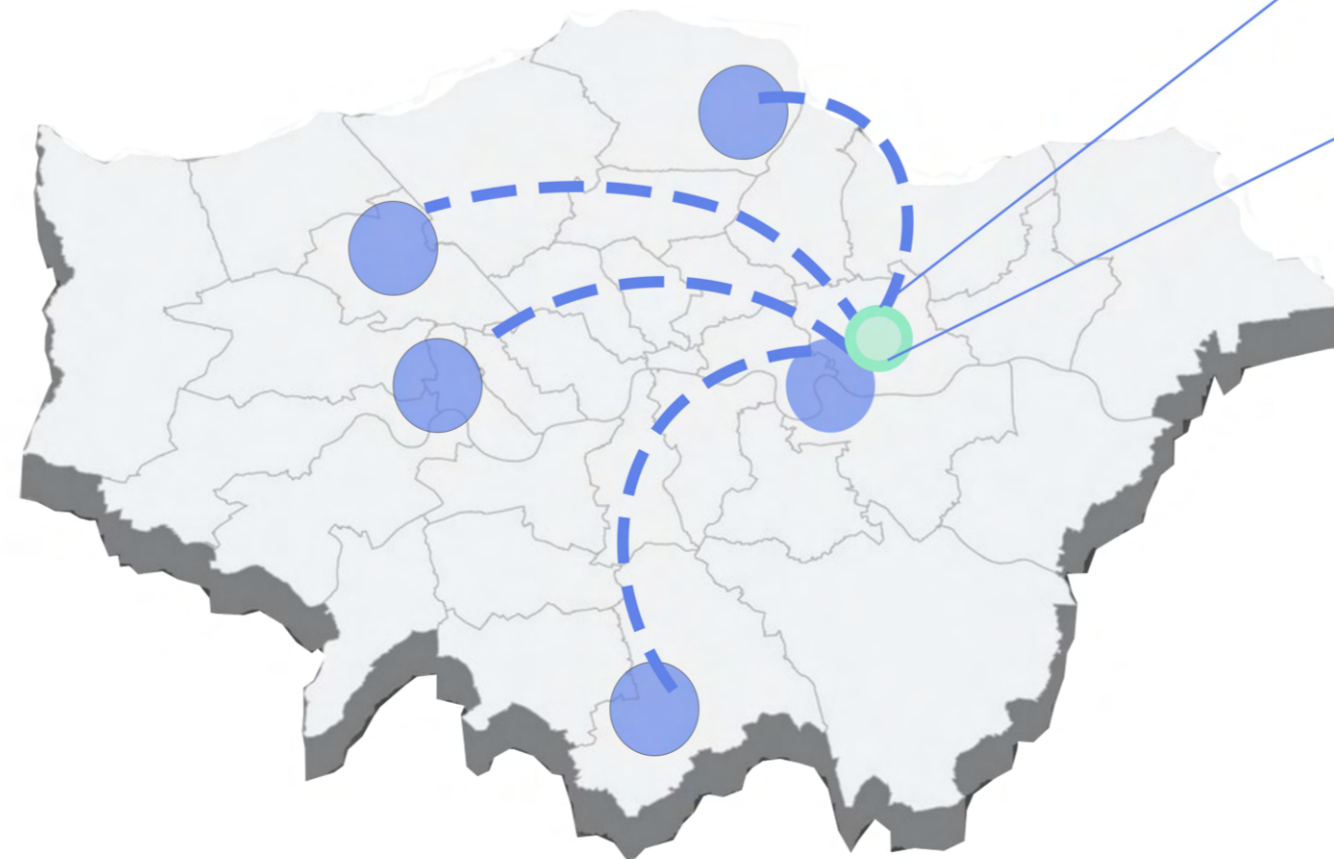


Instead of these useable elements ending up in landfill the silo will provide a free collection service across london and store them at the archive where they can be accessed by people who can make use of them.



Archive users can shop the recycled elements for a cheaper price and earn points to spend by donating spare parts and furniture.

London has five Ikea stores which will form a network with the ikea silo. One of the stores is Ikea greenwich which is just four miles from the site. The Ikea stores can donate old stock and returned items that can no longer be sold to the silo.



Interior views:

