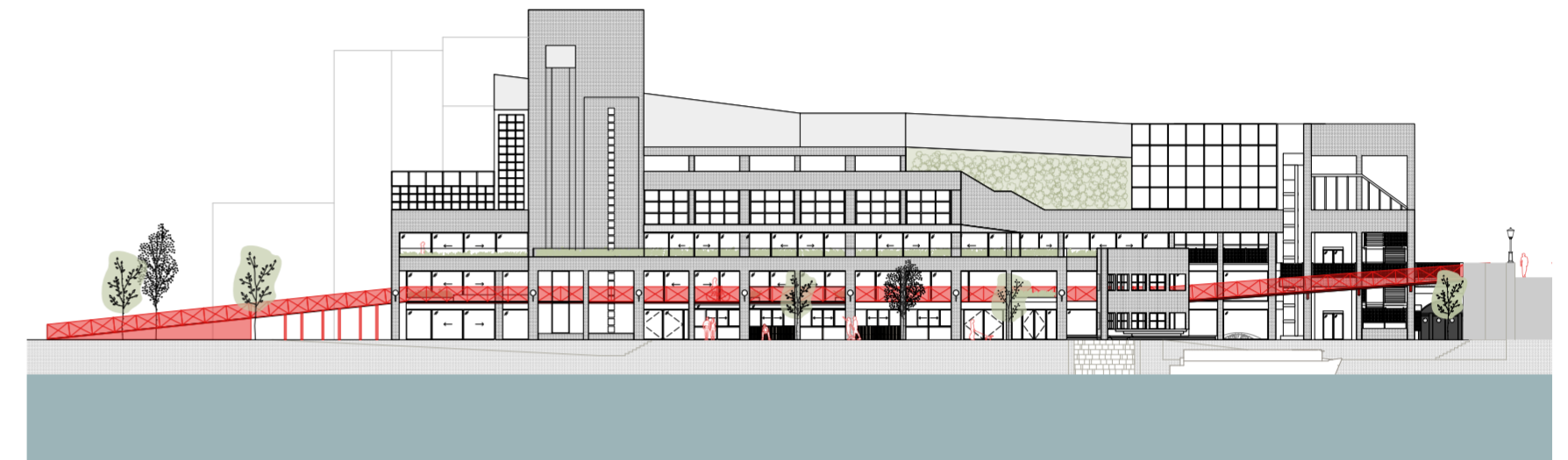




Repair courtyard in the basement



Event space for the community in the basement



Elevation at 1:500

Multihall - Revitalising the town centre

The Multihall is a building for the public that raises the discussion on how town centres can be revitalised. It asks questions on how we can adapt our lifestyle to be more sustainable in our behaviour.

The site is located at the back end of John Lewis in Kingston. It is a building that offers a framework to change a behaviour that is currently fuelled by consumerism. Kingston is an example of a town that was a retail haven in the 90s, but now is reflecting societal change and the decline of the high street - the current pandemic speeding up this process. With many vacant shop units, it leaves an imprint on how much consumerism has become part of our life.

By understanding the local and socio-economical context, the Multihall is catering for social inclusions and strengthening the community. Spaces like these will help people to change their mindset, rewiring a belief system that has been trained to consume. Furthermore, it is creating a space that makes people think about waste in a different way - as a resource - making its value visible.

Furthermore, the Multihall provides a new transport link for Kingston Town Centre by inserting a bike lane that goes through the building, connecting Kingston Bridge with Canbury Gardens.

01 dinner



02 live music



03 market



04 repair workshop, workshop for school children



05 repair workshop



06 theatre, dance performance



Diagrams showing different uses



Concept collage

Spatially, the Multihall comprises a creative hub for recent graduates, young designers and entrepreneurs on the first floor with a rooftop garden above for the public. In the basement, that holds ruins of the first bridge in Kingston, is a repair workshop and a cafe bar. The workshop facilitates activities to create knowledge around sustainability and circular economy, encouraging a behaviour that reduces waste and consumption. Furthermore, the cafe offers space for social interaction, then turning into a bar in the evening, boosting Kingston's evening economy. By having the possibility to transform into a large venue by opening up to the repair courtyard to the cafe, a flexible space for pop ups, swap and second hand markets is created, introducing a historical layer of Kingston that has been lost in the last century. The space, therefore, functions as a hybrid for the community of Kingston. On the ground floor are a material library and flexible community spaces. The material library is for materials from nearby construction sites, empty shop units, materials from the public that are collected and can be reused in the workshop. This is opening up a discussion of how implementing facilities that encourage a circular economy can inspire people to become more sustainable, claiming back their right to repair. The Multihall is about celebrating people that want to take responsibility and live resourcefully.



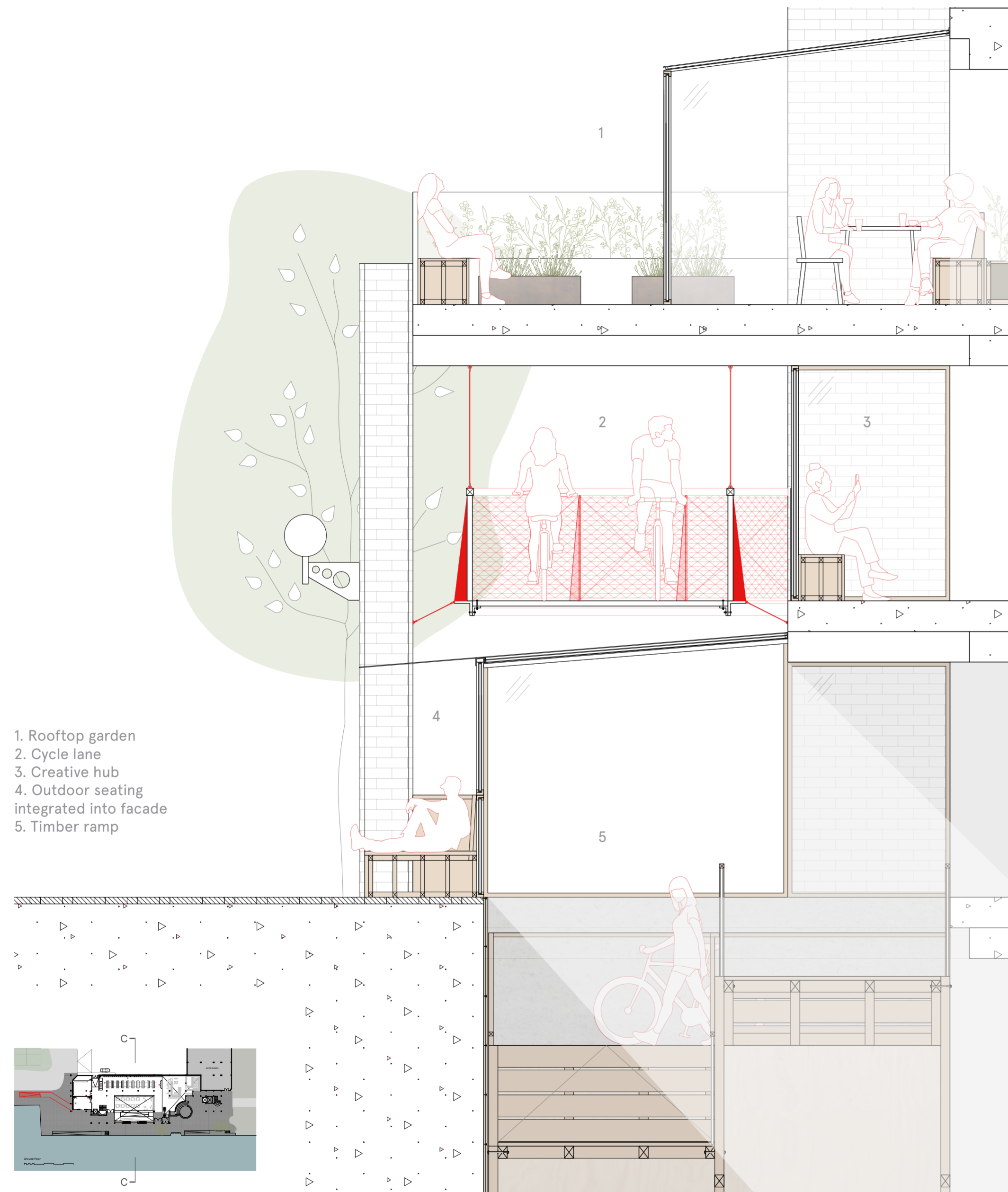
Model at 1:100



Material library and swap shelves



Perspective section



Section (not to scale)



Model at 1:50, timber ramp leading into basement

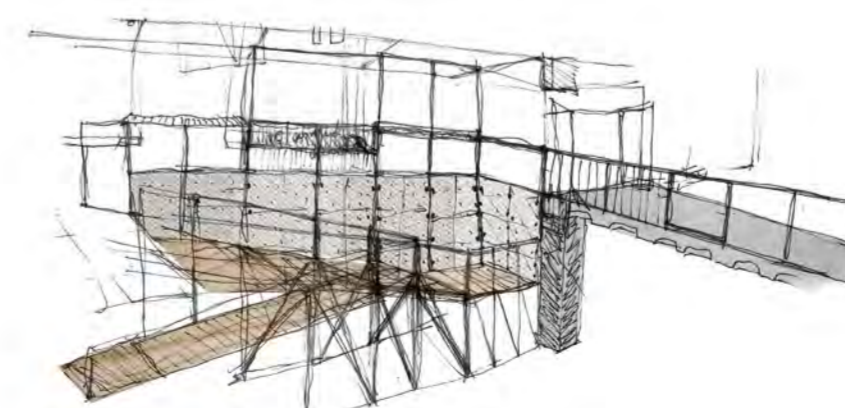
The building is situated right next to Kingston Bridge. In early centuries this bridge was very important for the town as it enabled Kingston to become a place of trade. The timber ramp in the Multihall that leads to the repair workshop in the basement therefore references the aesthetic of the first bridge in Kingston adding a layer of historical connection.



Sketch collage of the exterior with bike lane and outdoor seating



Painting of the first bridge in Kingston in 1200



Sketch of the ramp



Creative hub

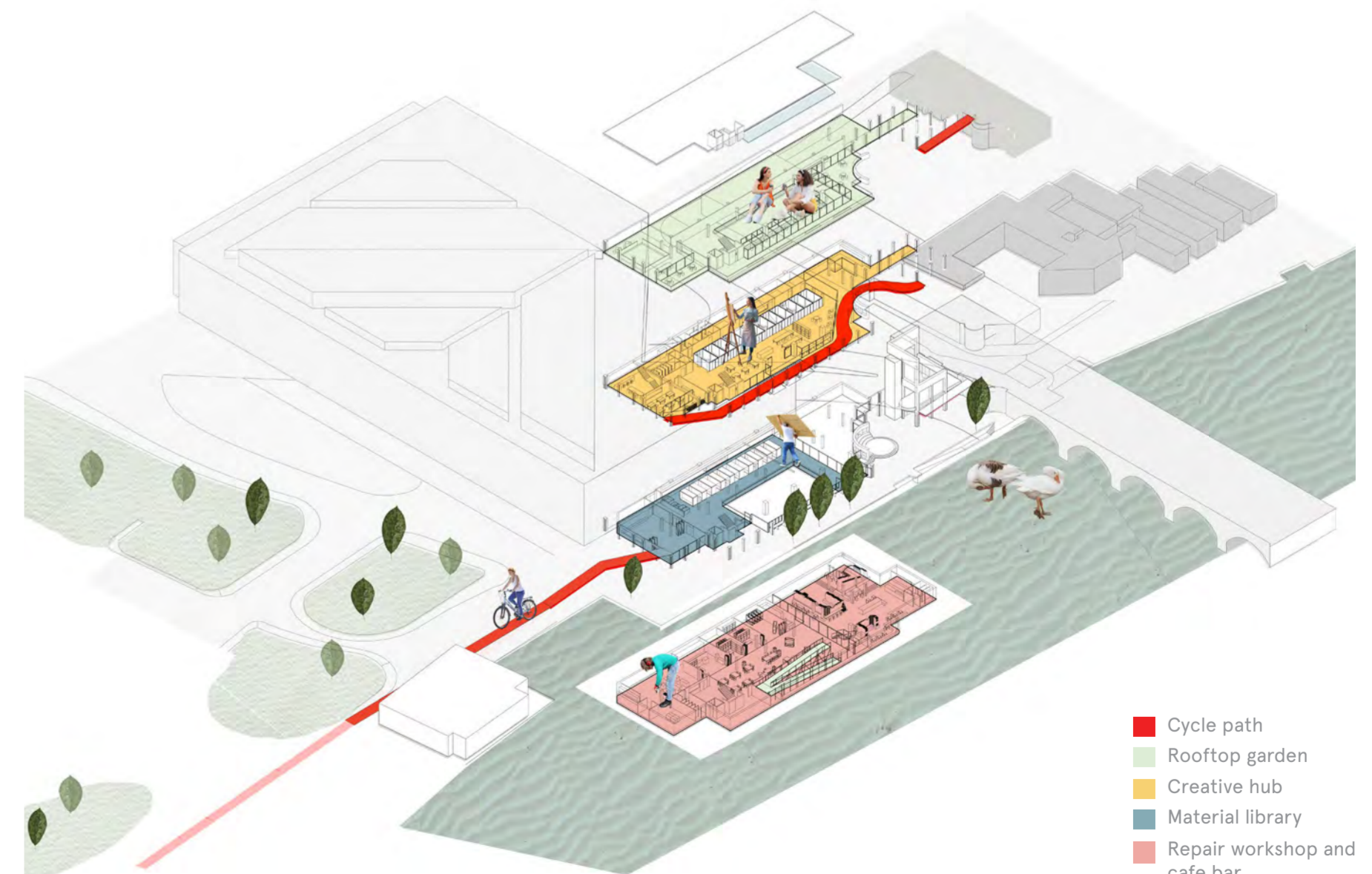
- 1. Communal kitchen
- 2. Fixed desks
- 3. Balcony
- 4. WC
- 5. Showers
- 6. Space to take a nap
- 7. Telephone booths
- 8. Chill out area
- 9. Quiet working area
- 10. Meeting rooms
- 11. Bike storage
- 12. Rentable studio units
- 13. Hot desks
- 14. Group work area
- 15. Balcony



First floor at 1:500



Creative hub - bike lane



- Cycle path
- Rooftop garden
- Creative hub
- Material library
- Repair workshop and cafe bar

Programmatic isometric

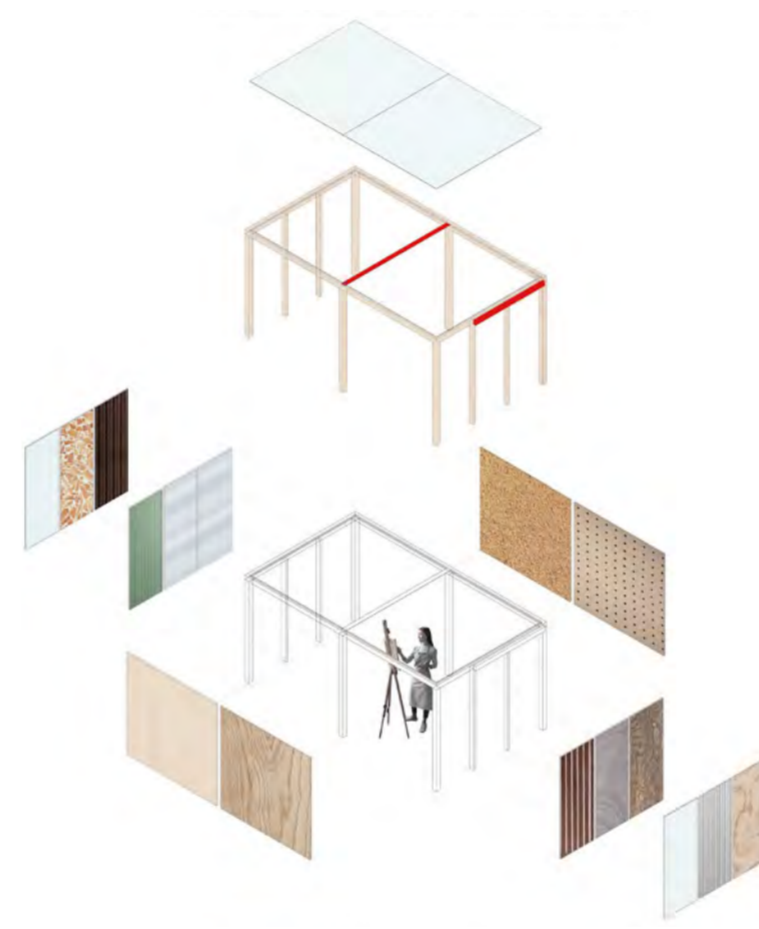
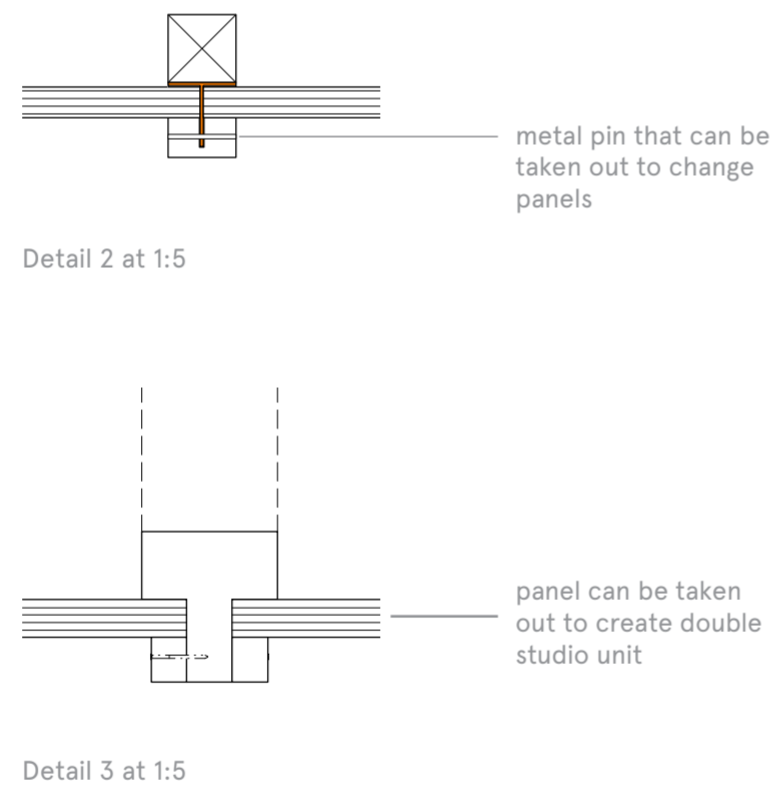
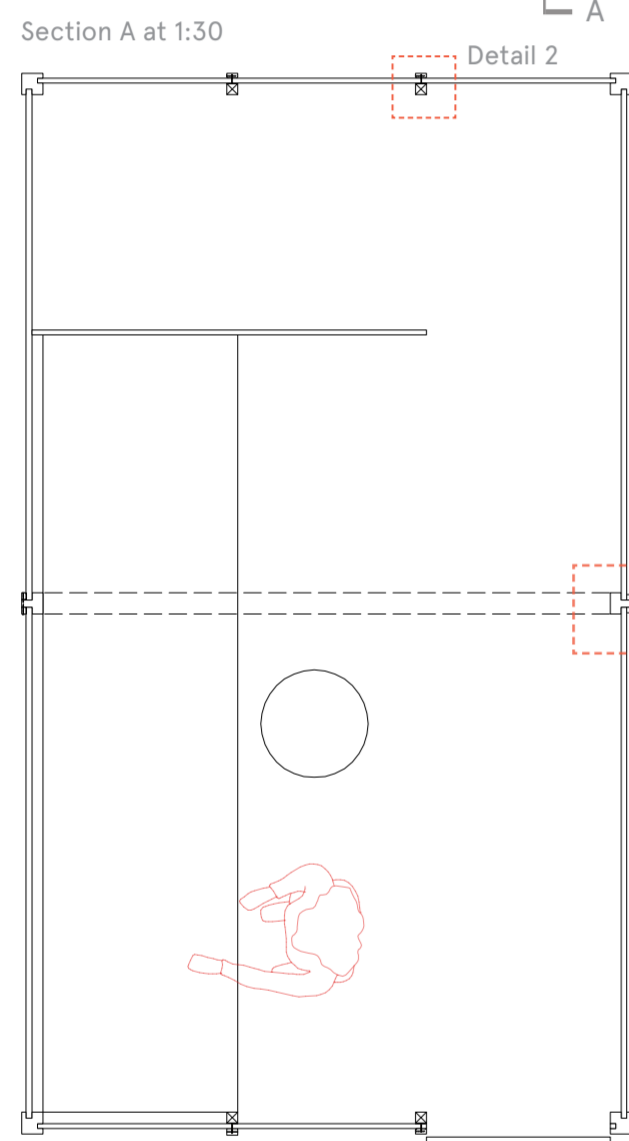
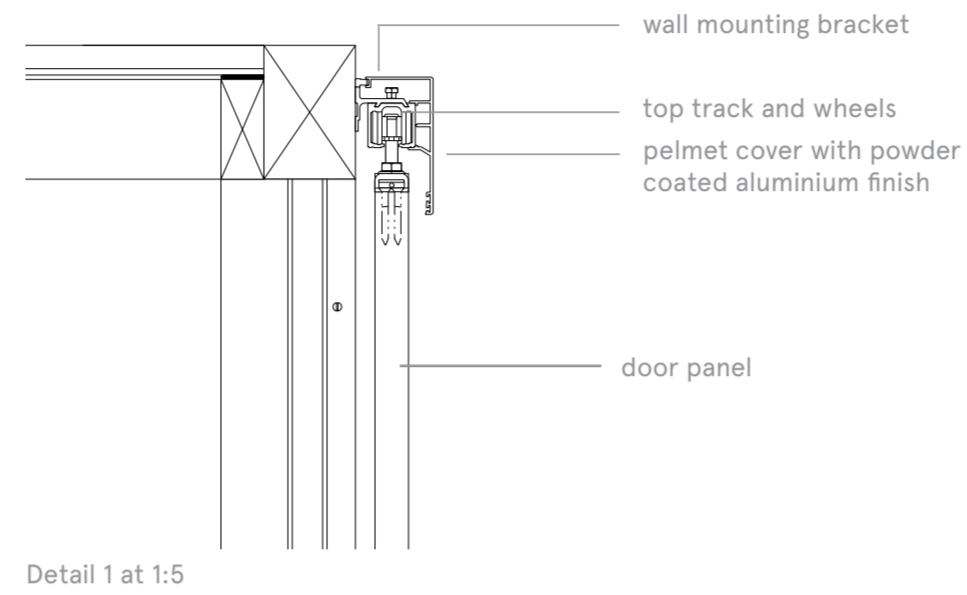
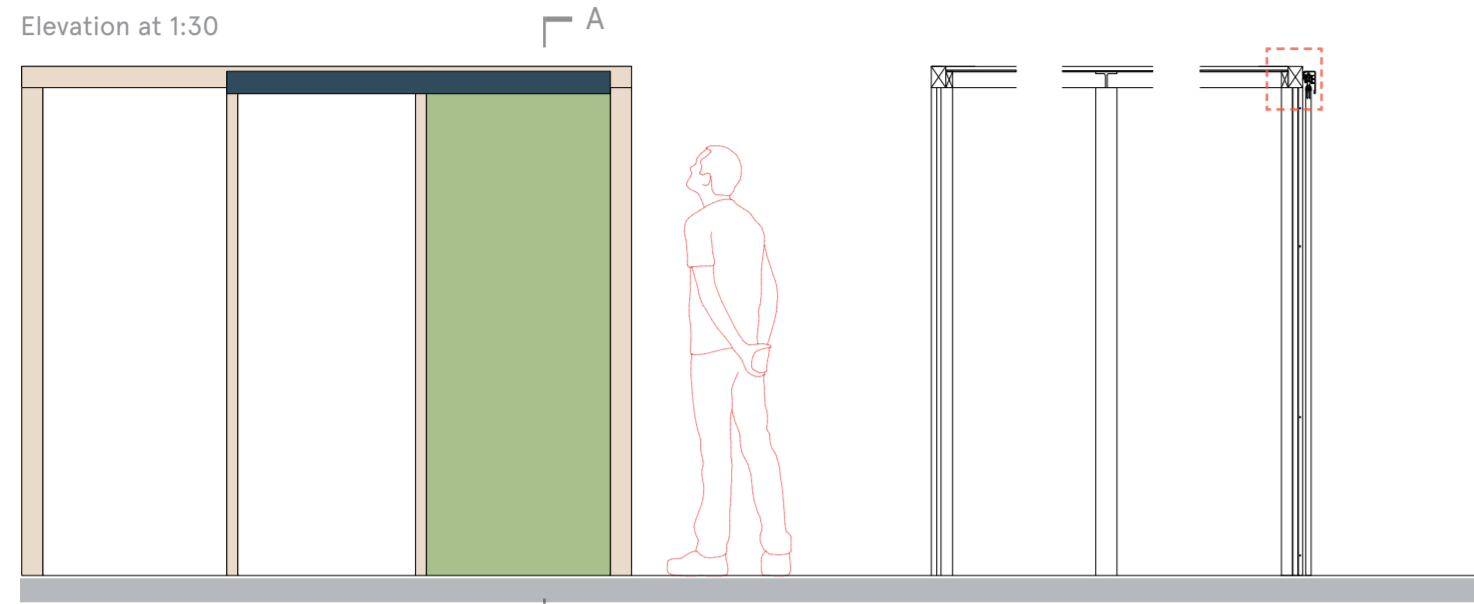
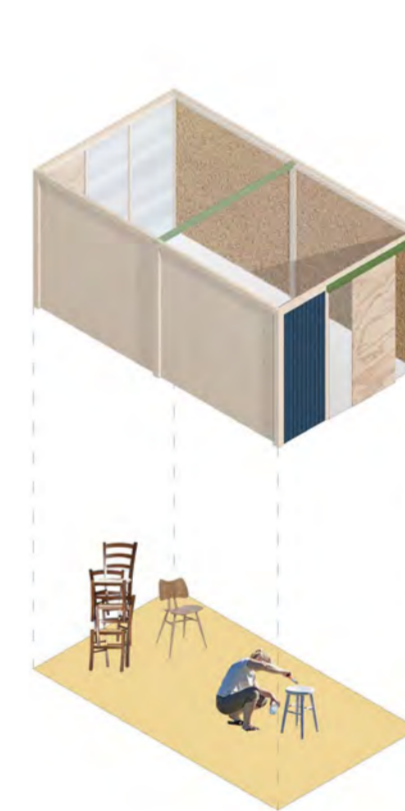
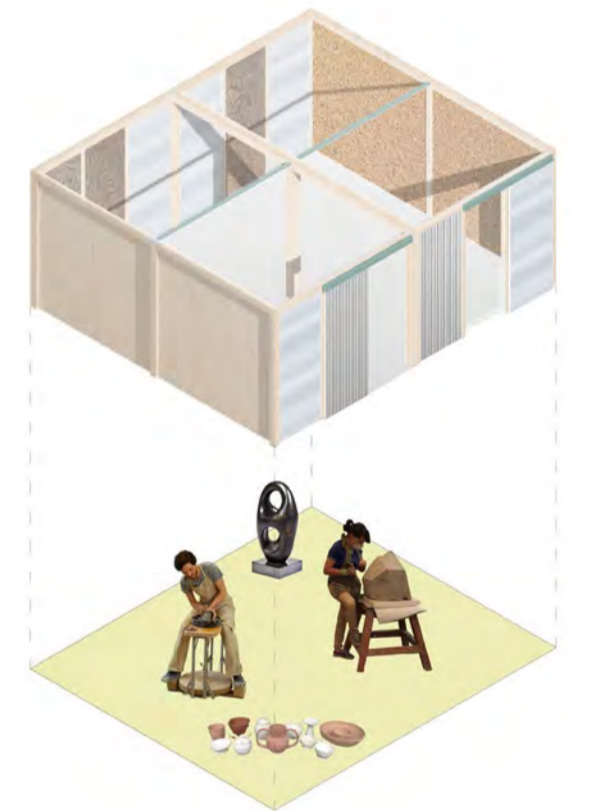


Diagram showing flexible and interchangeable panelling

The creative hub includes studio units that can be rented. The units provide a framework for a flexible panelling system, which can be adapted by each occupant creating a space catering for their specific needs.



Single studio unit



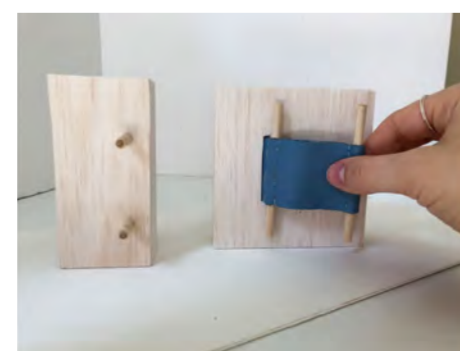
Double studio unit



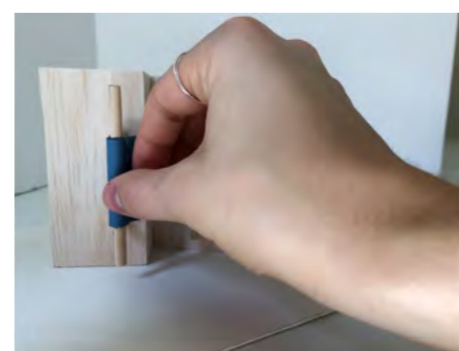
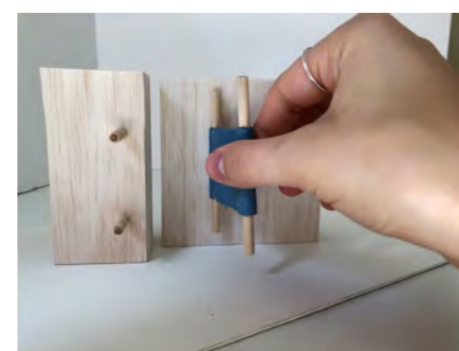
Model of door handle detail at 1:2



The door handle is made from leather off cuts. The leather is threaded through a slot in the door panel and held in place by timber rods. This detail reflects the overall concept of using standardized sheet materials or reusing materials but adding simple and effective design moves. The intent is to keep the materials as raw and untreated as possible and therefore easier for retrofitting.



opened



closed



Model of design studio unit at 1:20

