

Times:

9 am

11 am

1 pm

3pm

5µm

7pm

10µm

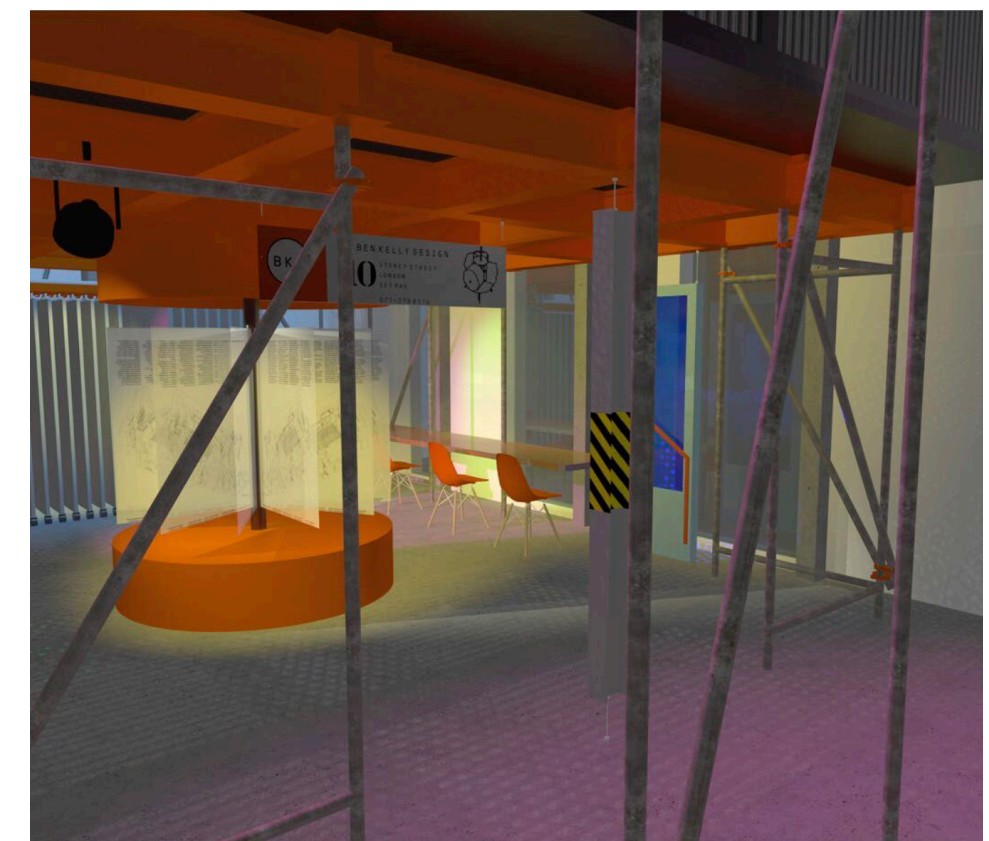
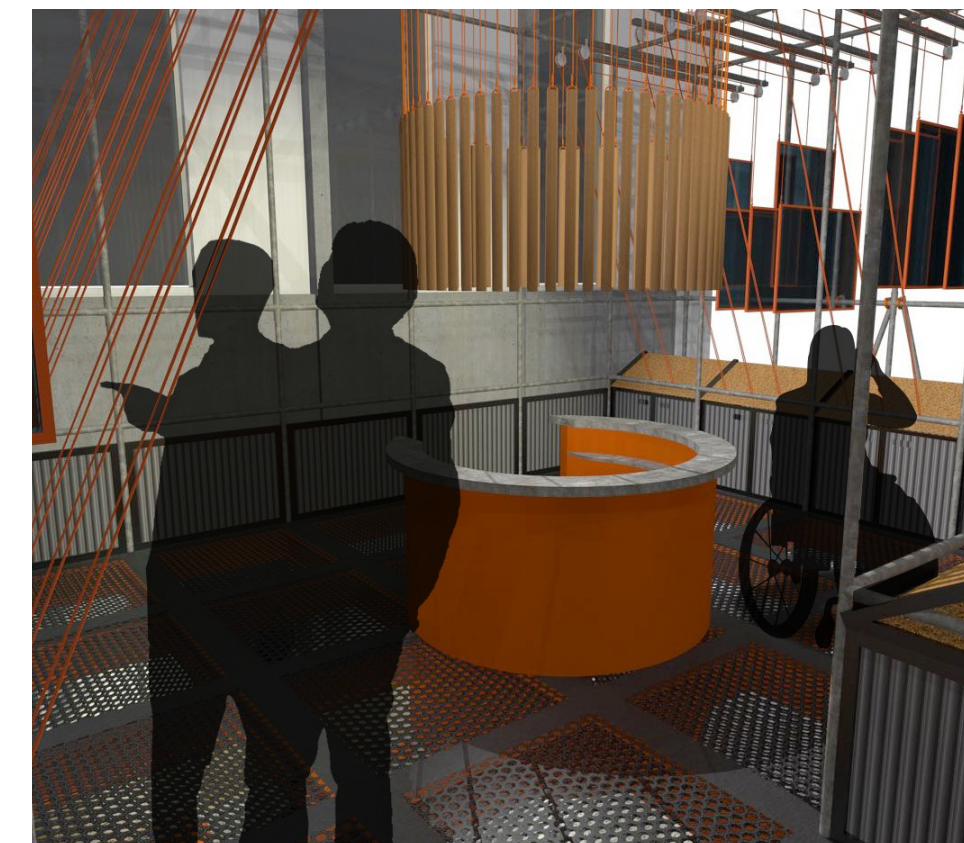
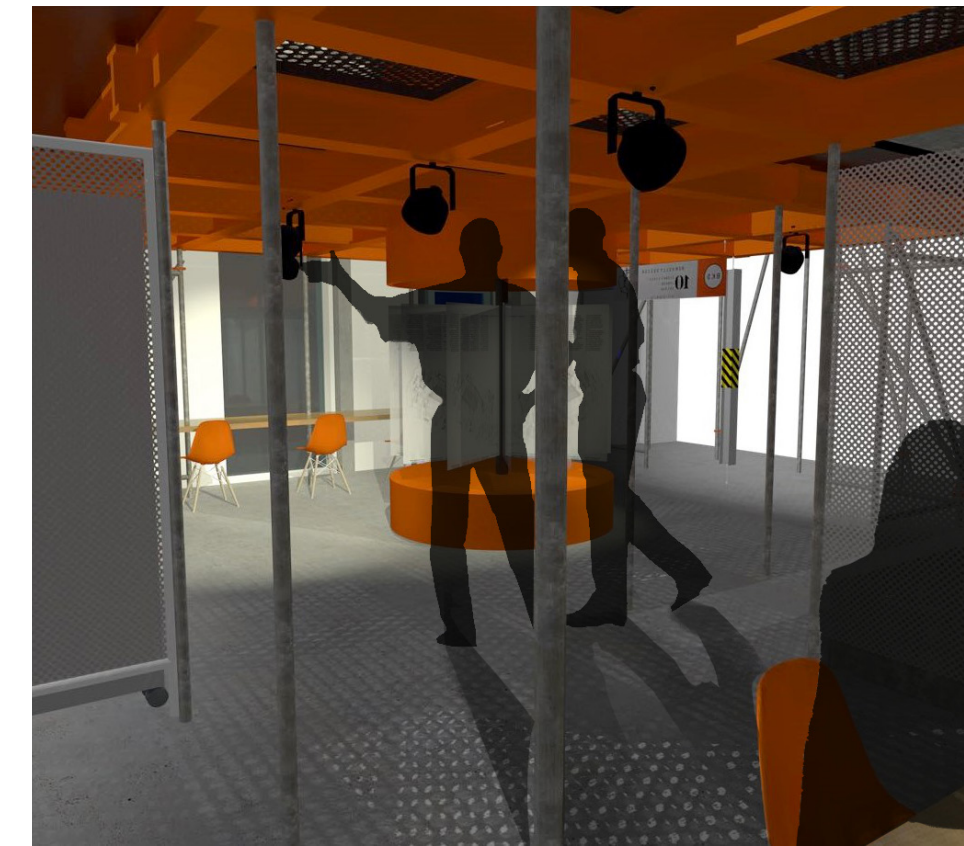
Archive tour:

Study area:

Talks/Lectures:

Bar:

Exhibitions:

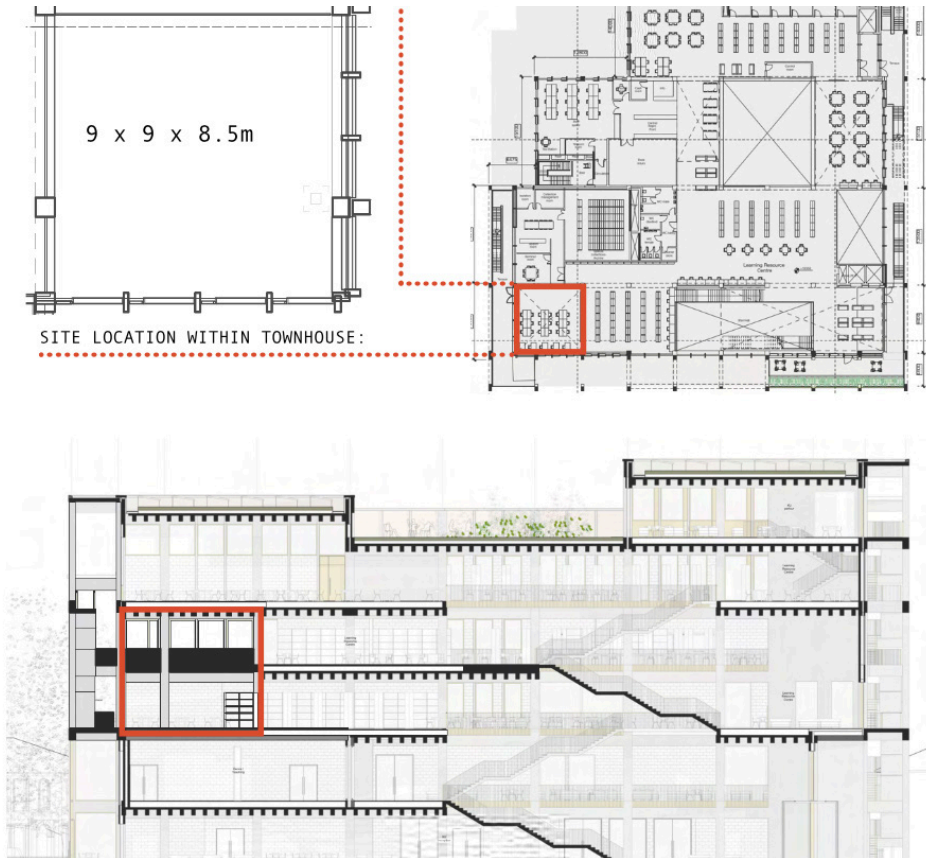


ARCHIVE DURING THE DAY:

ARCHIVE AT NIGHT:



THE SITE: PENRHYN ROAD LIBRARY, KINGSTON UNIVERSITY



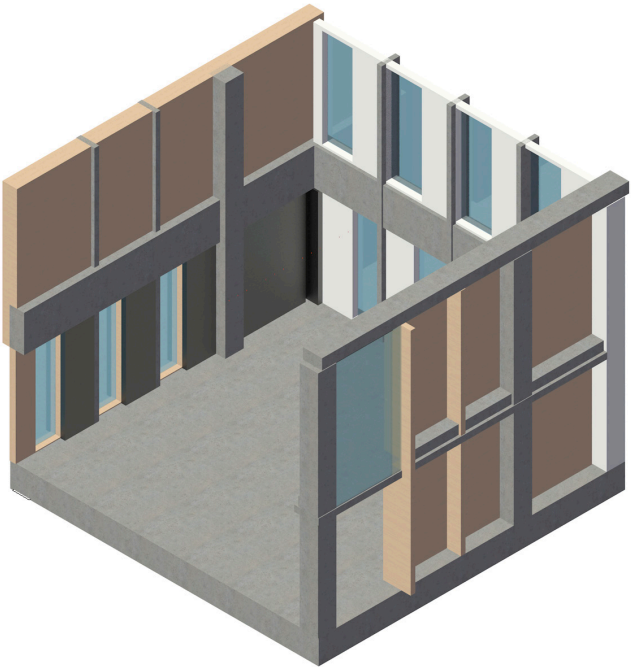
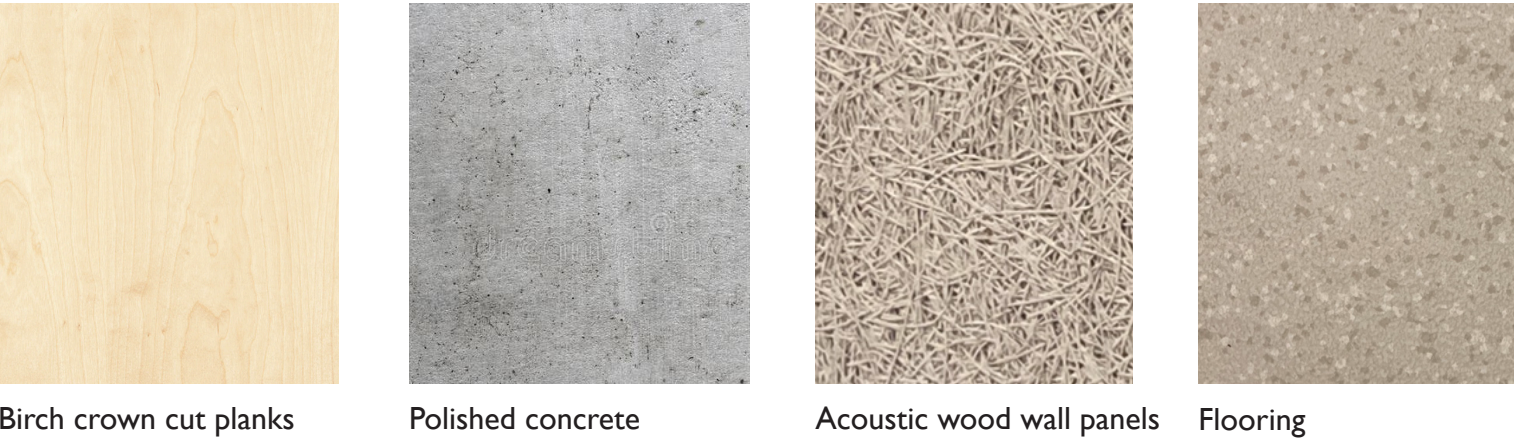
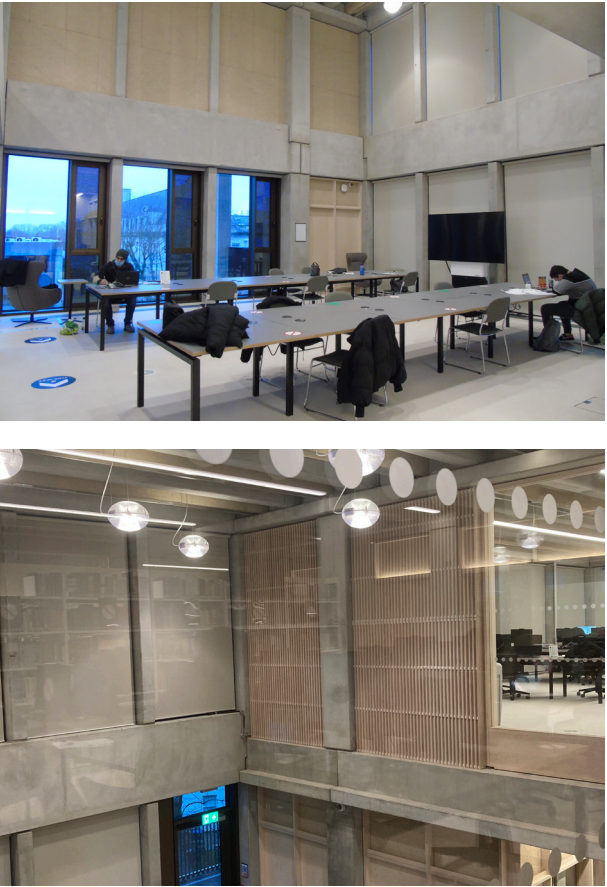
The site is located on second floor of the Kingston University Penrhyn road library.

It is a double height 9x9 room with windows on two of the sides.

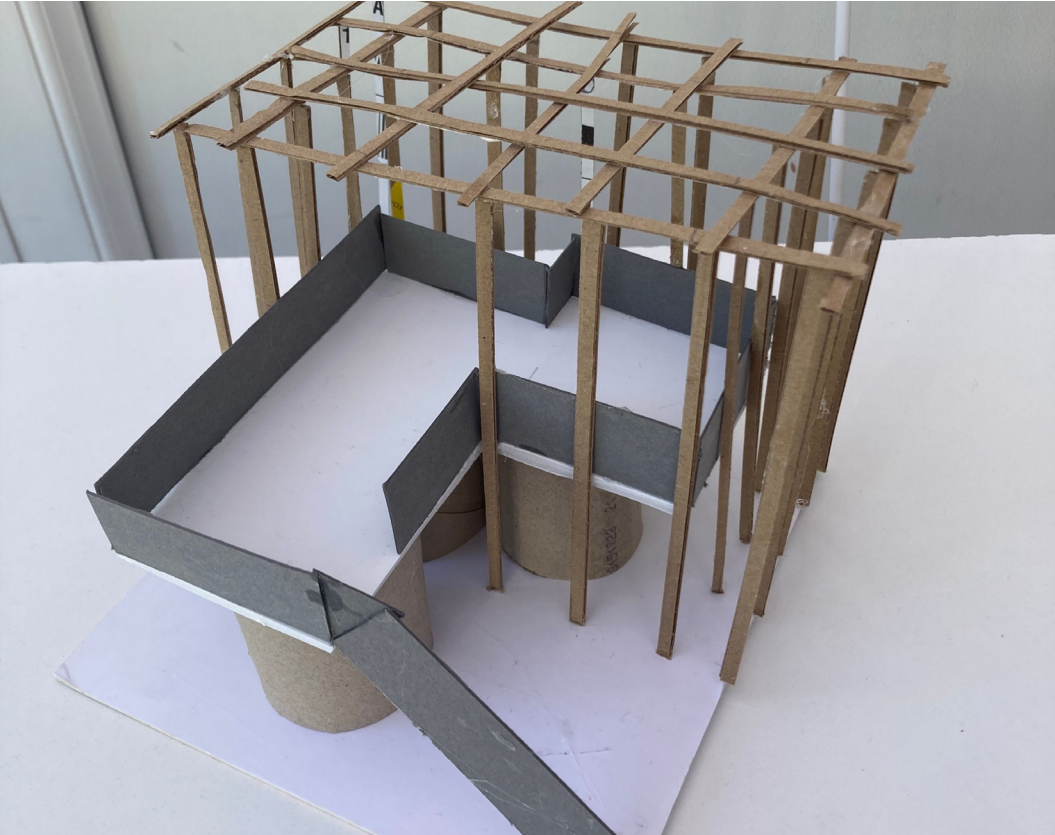
The third floor also has windows that look down into the space.

The townhouse site is situated approximately 11 minutes walk from KSA and 17 minutes from Kingston station.

Site photos:

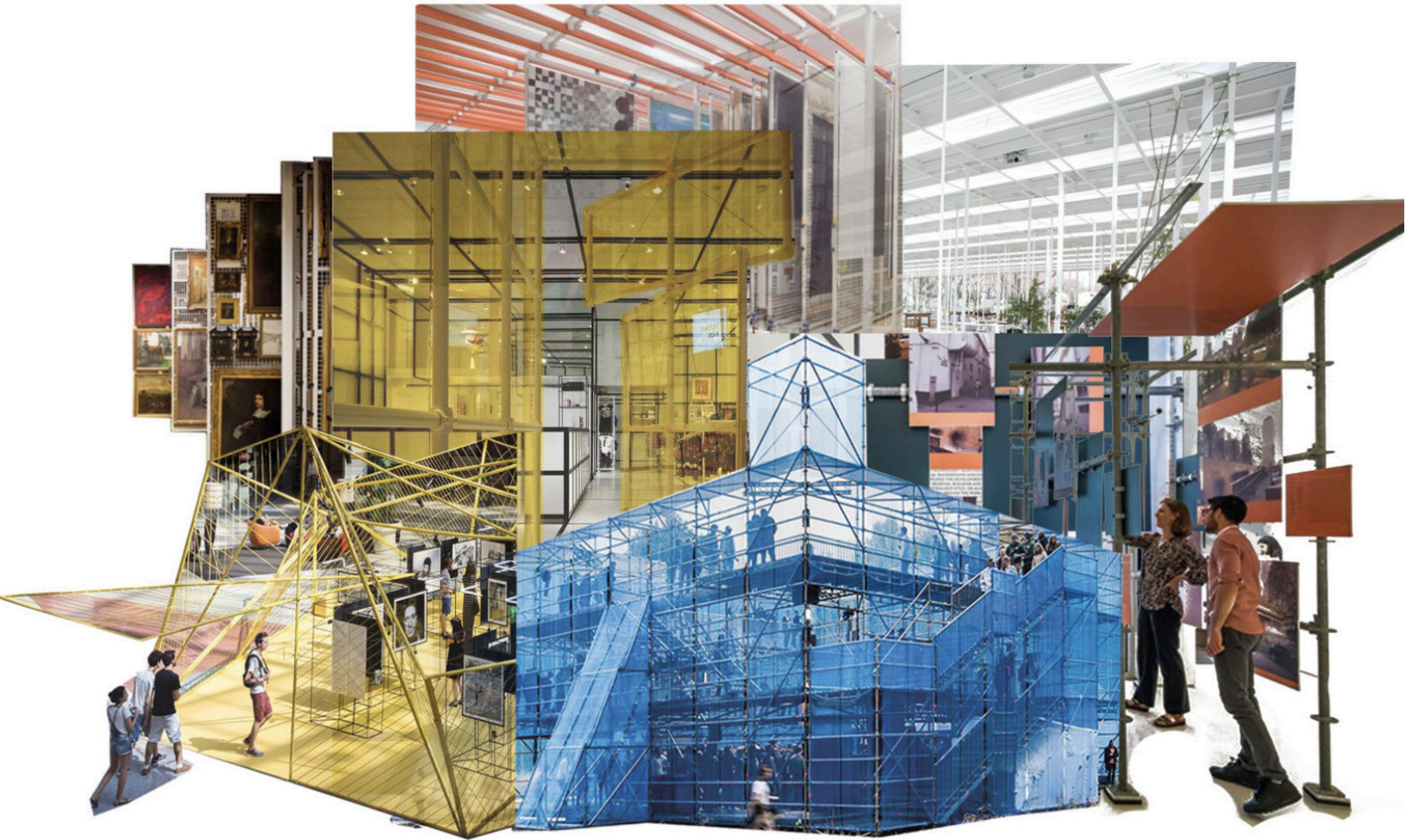


Winning concept model from the individual work stage:



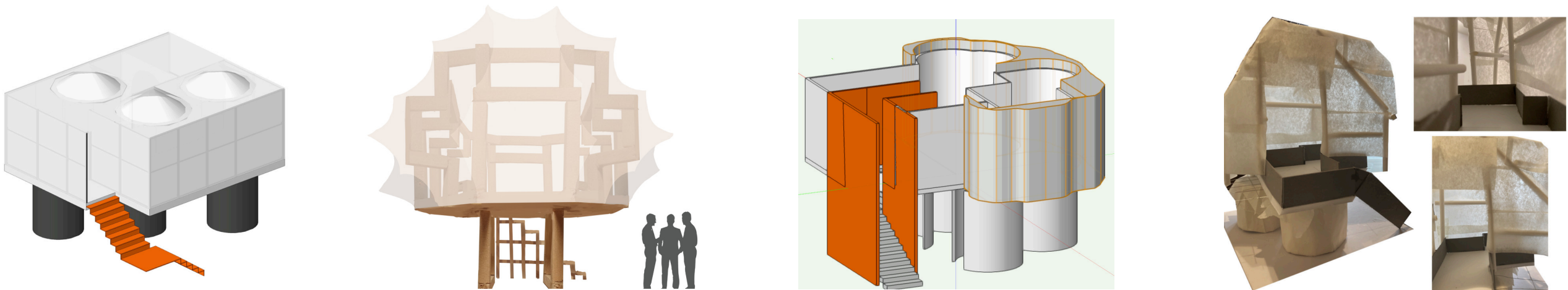
Second concept model designed as a group:

THE CONCEPT: DYNAMIC MECHANICAL INDUSTRIAL ECONOMICAL VIBRANT READY-MADE GRID MACHINE



Concept collage:

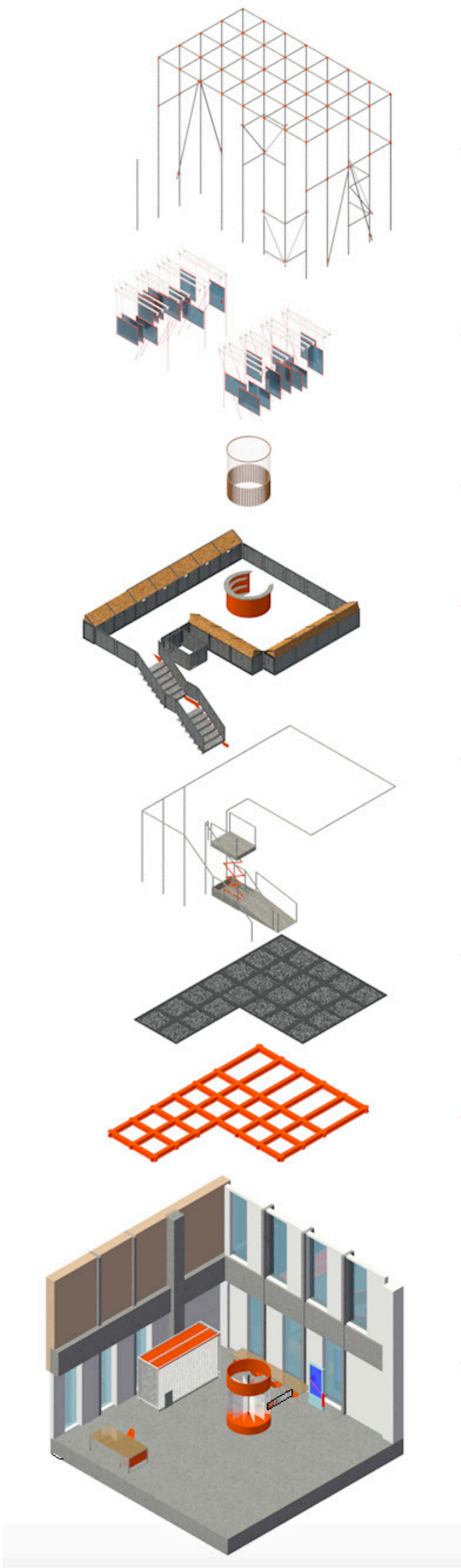
At the competition stage one proposal was chosen by Ben Kelly and the tutors. The next step was to explore their feedback and respond to critiques. Each team member came up with their own solution for the next stage of the group project. After a group tutorial with our tutor where we presented our sketch solution models we decided that the organic rock shape that features in the original winning proposal would be too difficult to work with and feared it may look trivial. As a group we abandoned this idea and began to work on a stripped back version of the model with an orthogonal grid design.



Sketch models designed by group members in response to first review feedback:



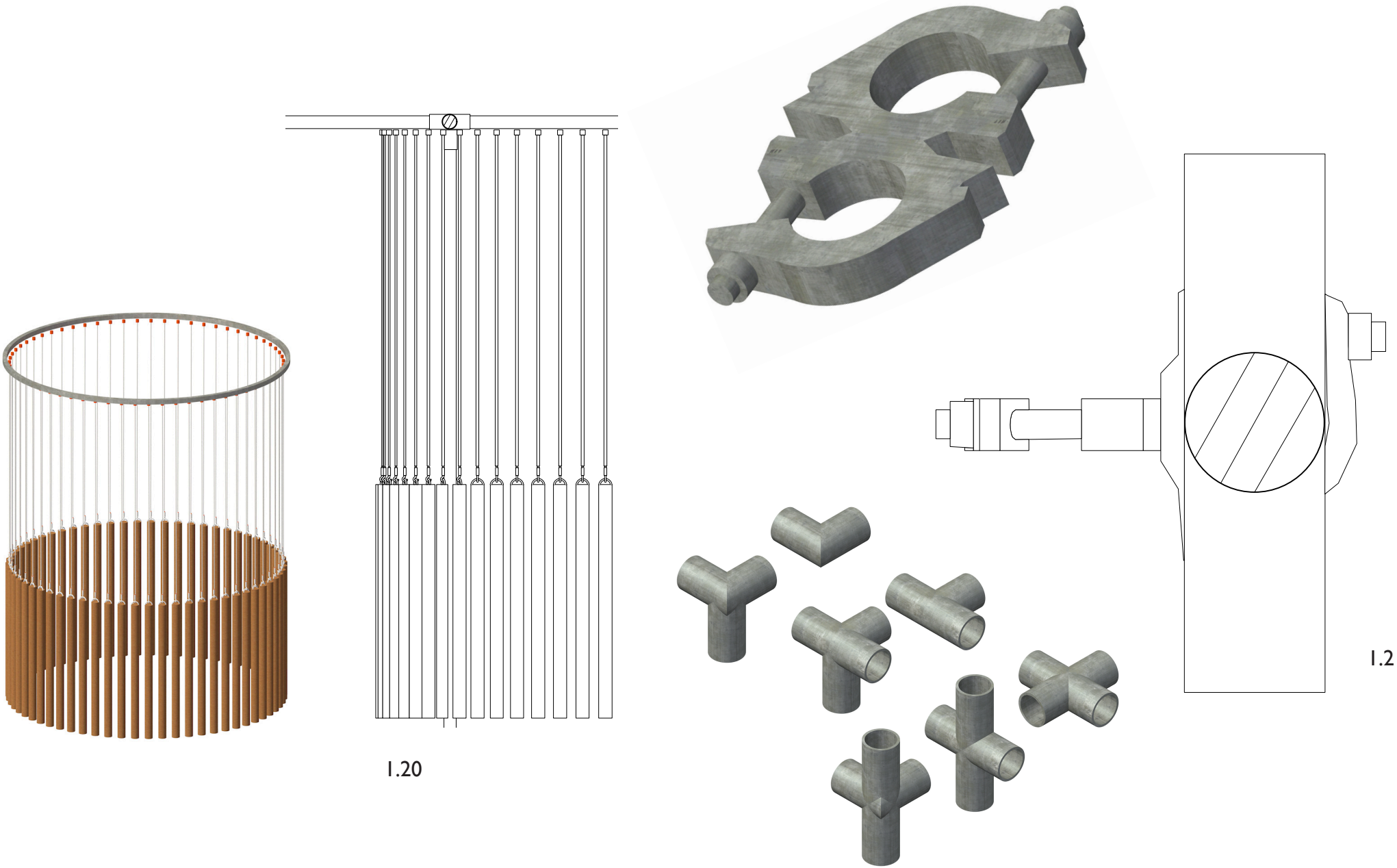
MATERIALITY AND EXPLODED AXONOMETRIC:



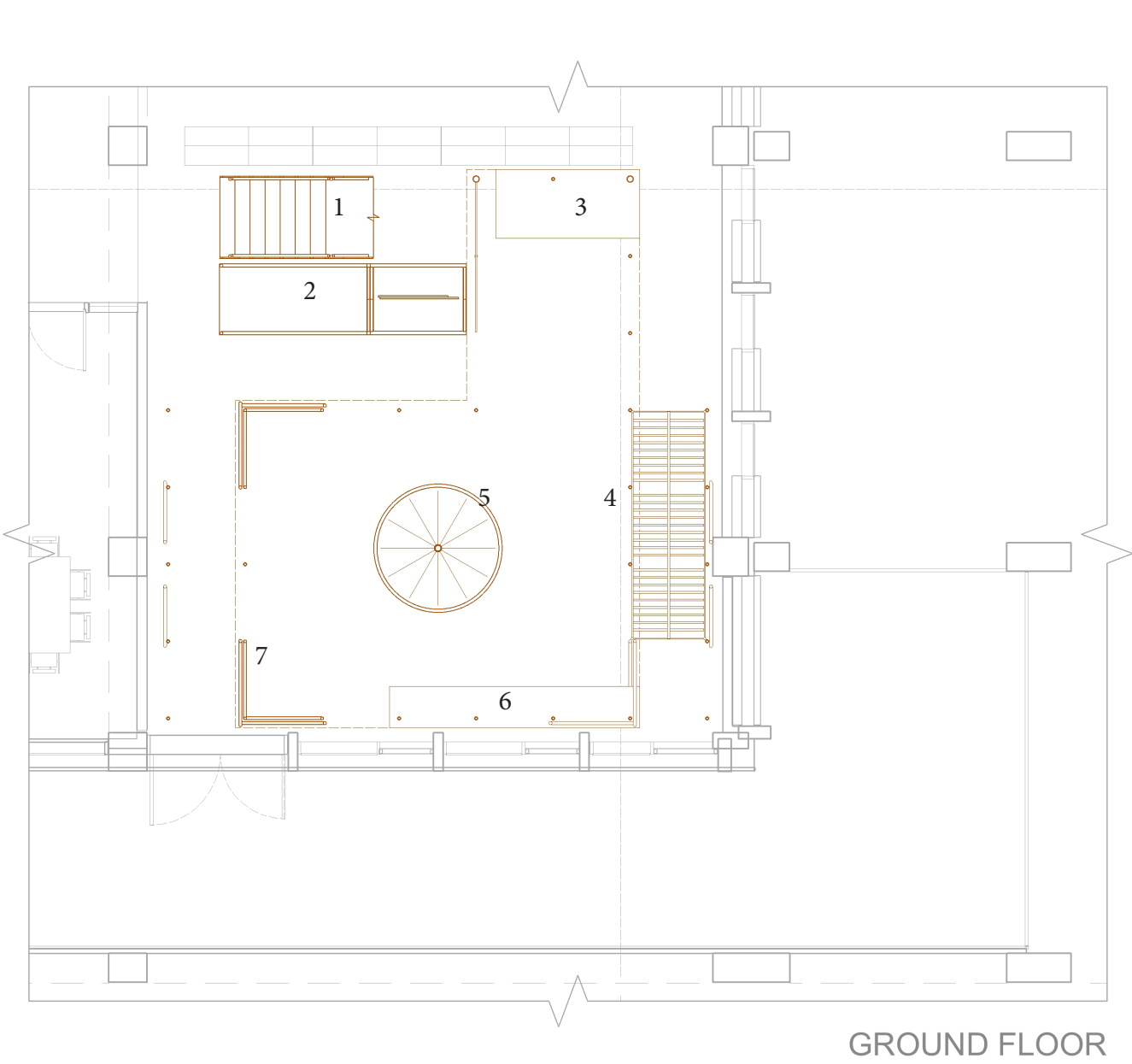
- ..... Galvanised steel scaffolding structure
- ..... Hanging display frames
- ..... Hanging arrangement of A0 tubes
- ..... First floor storage cupboards, bar and staircase
- ..... Handrail and disabled access (scissor lift)
- ..... Perforated steel and mesh flooring
- ..... Painted timber beams
- ..... Existing, archive storage and desks



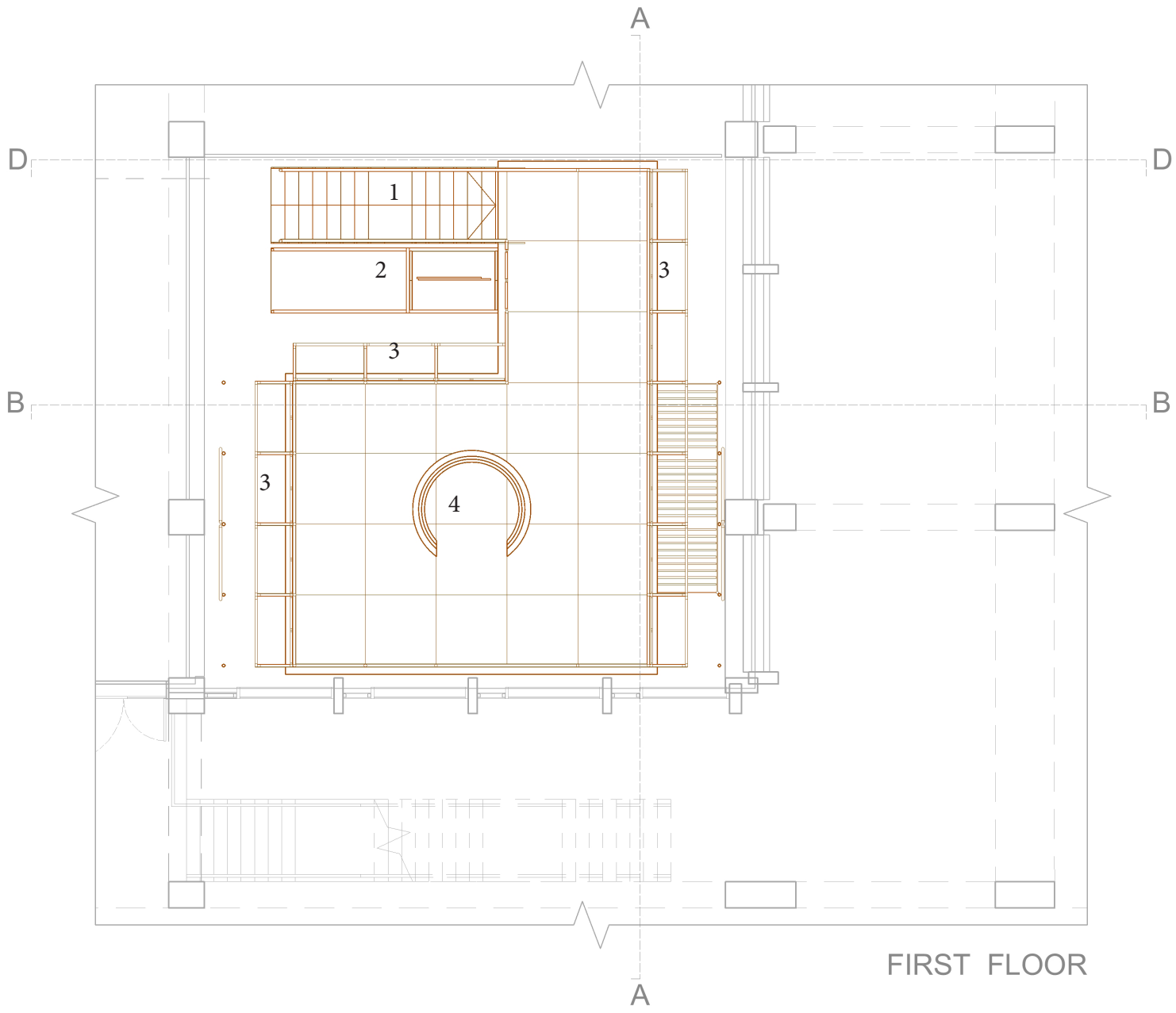
1. Perforated steel and mesh floor 2. Perforated steel panelling 3. Galvanised steel checker plate 4. Corrugated steel panels 5. Concrete 6. Cork 7. Laminate 8. Orange paint 9. Timber beams.



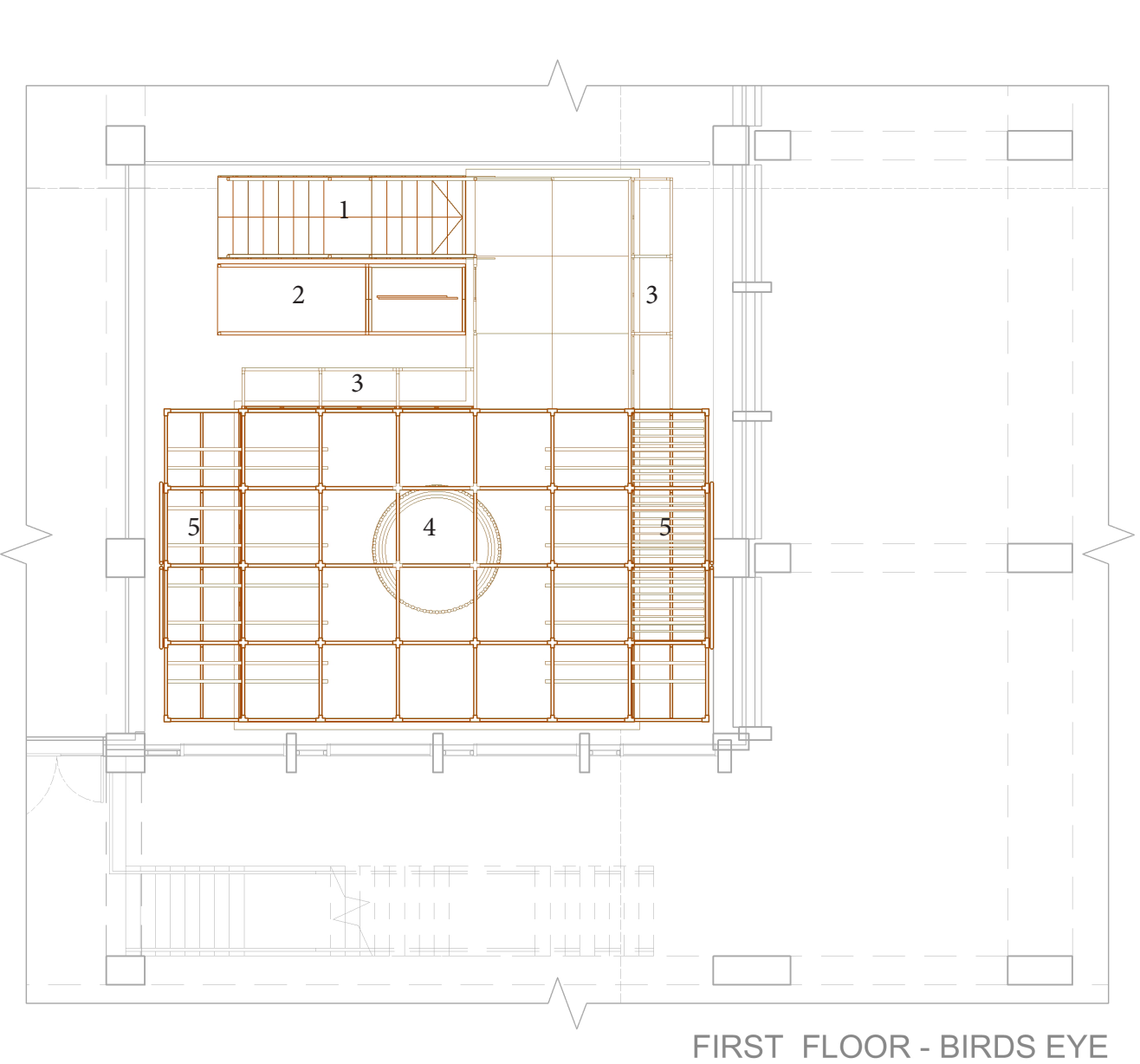




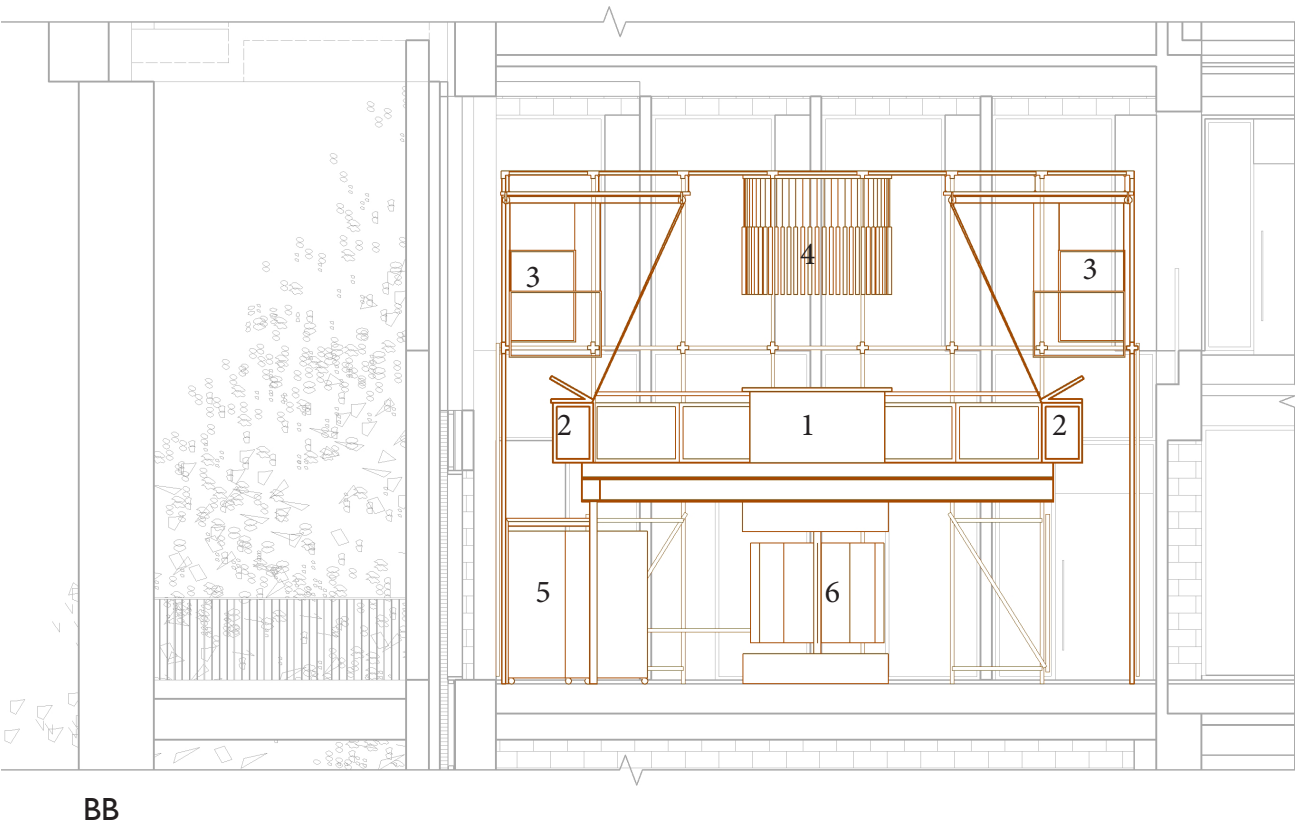
1. Stairs 2. Scissor lift (disabled access) 3. Staff desk 4. Sliding rail storage system 5. Revolving storage system 6. Group study space 7. Display or large archive items



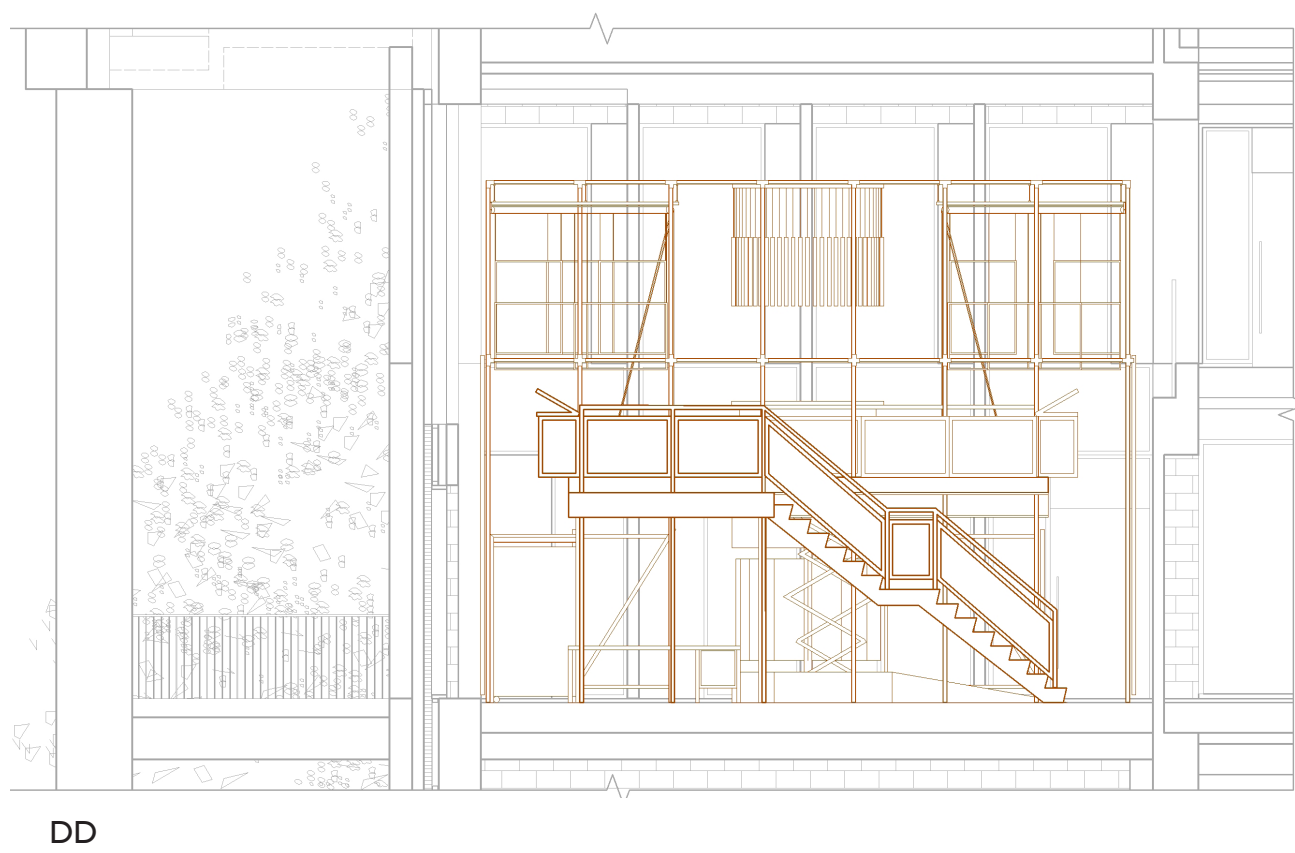
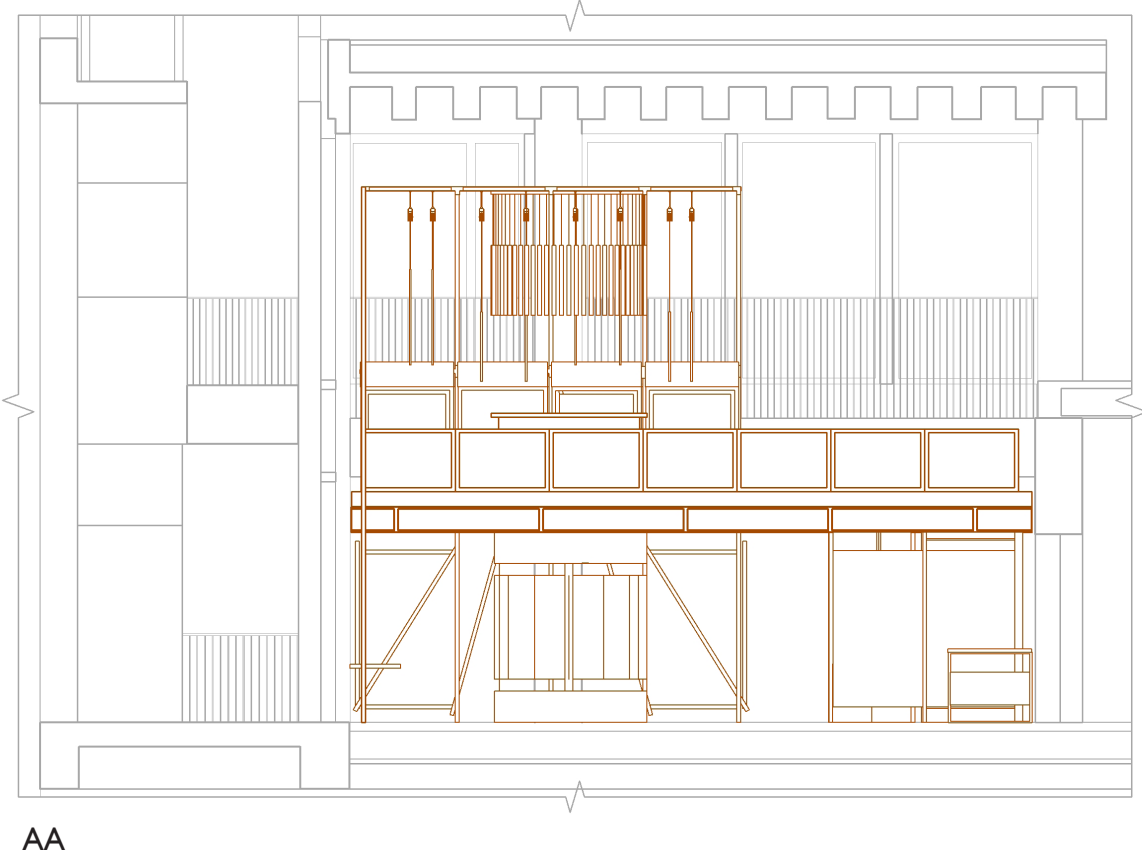
1. Stairs 2. Scissor lift (disabled access) 3. Storage cupboards 4. Bar



1. Stairs 2. Scissor lift (disabled access) 3. Storage cupboards 4. Bar 5. Hanging display system



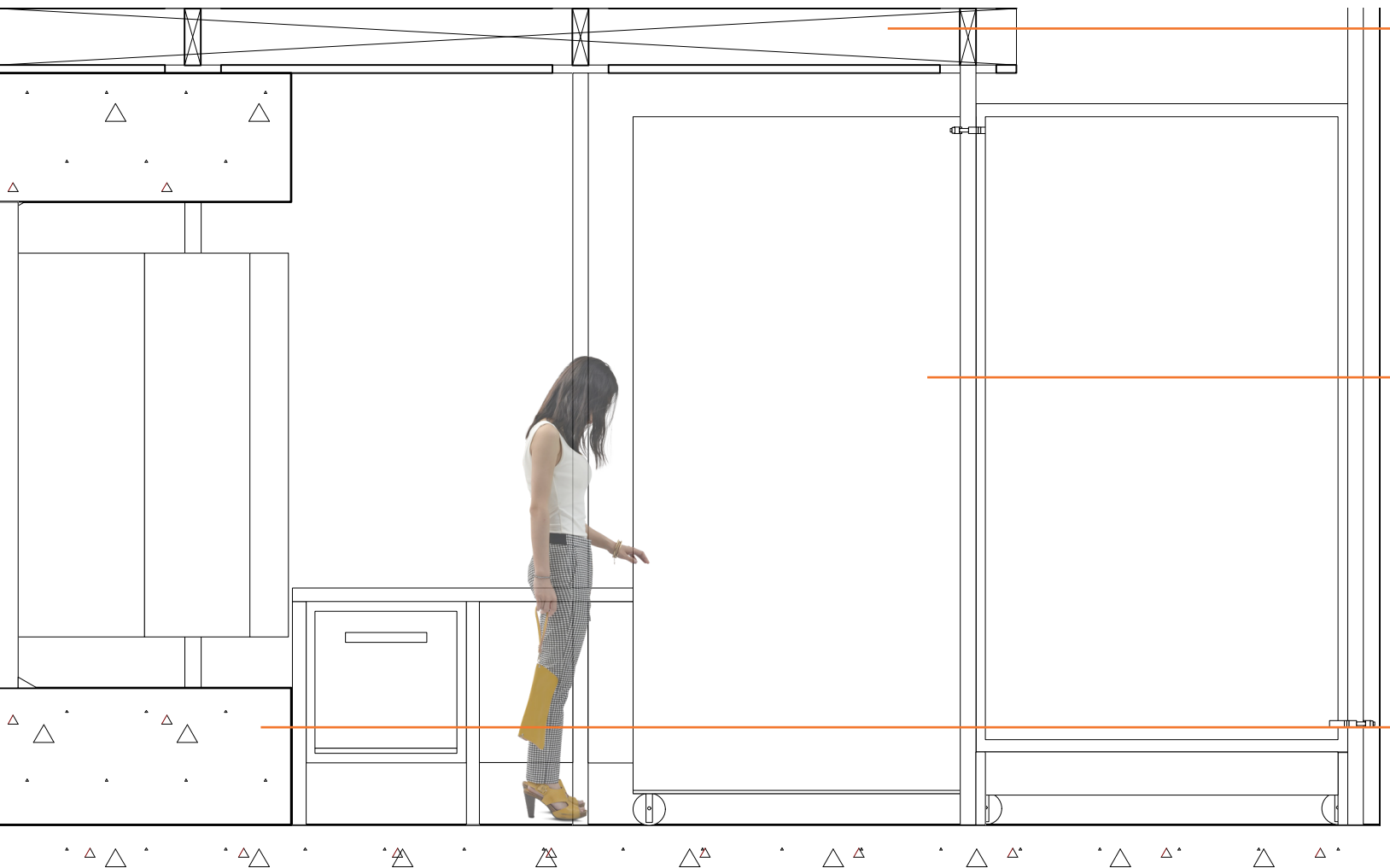
1. Bar 2. Storage cupboards 3. Hanging display system 4. Suspended A0 tubes 5. Sliding rail stoarge system 6. Revolving storage system.







Sliding display unit (put away)

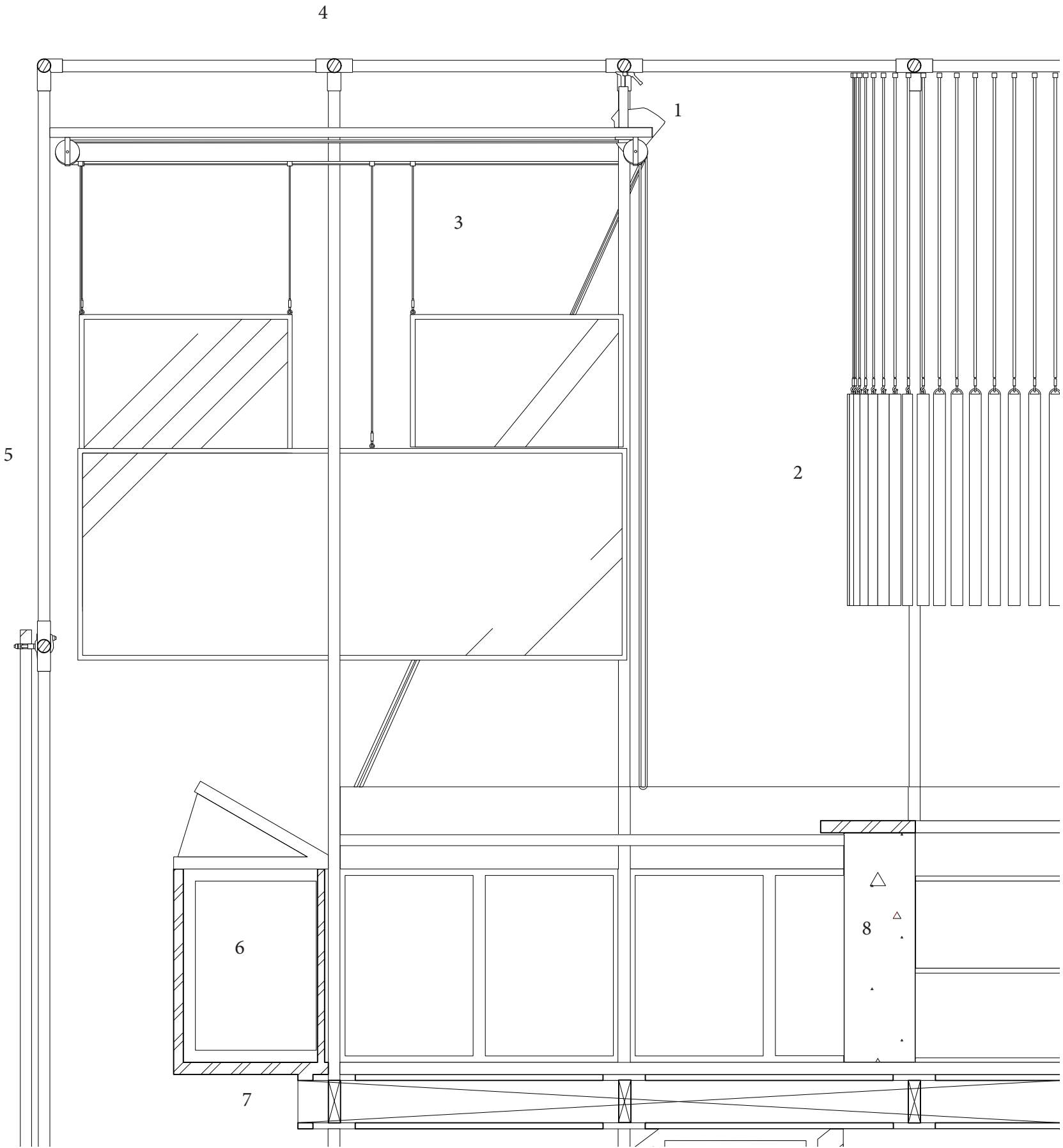


Timber floor

Sliding display unit (pulled out)

Concrete block

Concrete floor slab



- 1. Light fitting
- 2. Hanging A0 tubes
- 3. Hanging storage system (rail and pulley)
- 4. Scaffolding join
- 5. Scaffolding pole
- 6. Storage cupboard
- 7. Timber floor structure
- 8. Bar

