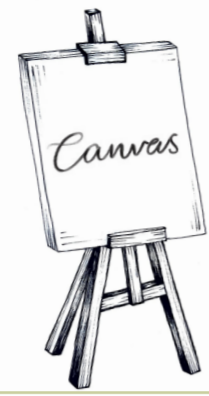


# CANVAS



ART THERAPY CENTRE

## LOCATION : ARMLEY HOUSE, LEEDS

Canvas, a charity funded programme with a studio, workshop and different rooms full of different activities take inspiration from the site and a form of therapy away from mainstream school. Adaptable to the needs of the current students attending. Along with therapy rooms for 1-1 and group sessions, to support students on their journey.

Armley is a disadvantaged run-down area, and the schools are underfunded. To benefit the area a space for schools to send students to learn, explore and create. The focus would be towards troubled, misunderstood, potentially with behavioural issues, young adults (age 12-16) who need an outlet to express their feelings, emotions and give them a focus, while having fun and being playful with their work.

The reuse of this site will involve relevant repairs, to the ground floor and first floor and removal of current graffiti and damage on the exterior. To further help the community and the environment, collecting of materials from local derelict sites, recycle materials and donations for students to reuse to make art. Passing on this idea to the younger generation and overtime the space will embrace the character added to the building from students work and include the collection of materials.

In 1928, the building was leased to Leeds city council for "the playing of games". Although this isn't a typical game of sports for example, it allows people still to have fun and get the same enjoyment from the site. Each person's definition of games is different, the definition according to the oxford dictionary "An activity which provides amusement or fun; an amusement, a diversion, a pastime".

## LOCATION AND USES

The site is located 3 miles from Leeds in Armley, once looking over, the former owner Benjamin Gotts, 4 mills and now looking over Gotts Park and Leeds city centre. Armley house formally known as Gotts Park Mansion has been used in many ways throughout the past 200 years. Once a family home, then a hospital during the war and now open to the community as a golf course/café. It once thrived, full of artwork, sculpture, books and music, with an open floorplan to entertain his family and guests. Now looking dull and rundown and needs some life bringing into it while still maintaining its character and history behind it.

Once stood tall wings at either end of the building, removed by Leeds city council causing issues with water damage and mould in the basement subsequently. This once made the mansion much grander and gave the building more balance.



One in five children and young people in England aged 8-16 had a probable mental disorder in 2023.

This project allows younger soon to be adults of all backgrounds and upbringings from society, to have an outlet for their emotions, whether that be anger, sadness, stress or happiness. A break away from their reality and a safe space to come back to. They can create friendships with others, make art and learn. Giving them lifelong skills to deal with their emotions and redirect it into something positive and even help them find a creative passion away from mainstream academic studies. 11 to 16-year-olds with a probable mental disorder were less likely to feel safe at school (61.2%) than those unlikely to have a mental disorder (89.2%). They were also less likely to report enjoyment of learning or having a friend they could turn to for support. A judgement free, open, supportive space that young people need.

This space needs...

- Safe spaces for individualism and expression
- Lots of natural light
- Open plan spaces, not too many closed off spaces



## EAST AND WEST ELEVATIONS OF THE EXISTING SITE

1:200 @A2

Ashlar Stone

-Black faced stone, it is believed that Gott went to the effort to have the stone carbonized. So that the house blended better into the landscape when seen across the valley, this gives the stone a blackened look.



0 1 2 3 4 5 6m

Columns

- Crucian ionic columns which was favoured by Smirke
- Tetrastyle temple portico
- This elevated the Greek revival style, with the stairs later added to it, makes the villa look grand.





# CONCEPT

Armley house will allow you to engage in your five senses, sight, taste, hearing, touch and smell as a form of therapy. Keeping children in touch with their senses to allow them to focus, have a goal and be present in the moment. A focus also with using the sites geometry and keeping symmetry in the site as a whole to keep a balance.

## LIGHT

Natural sunlight

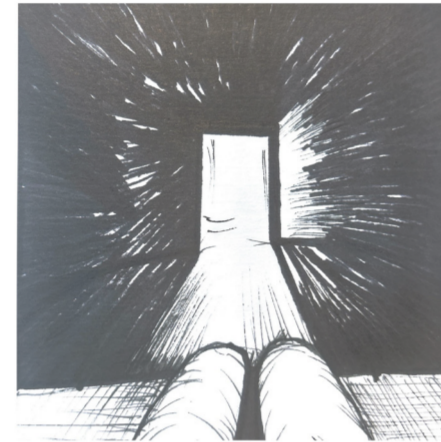
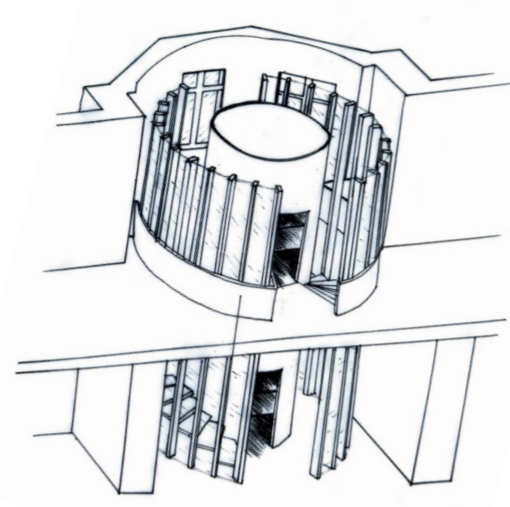
Looking at the sun path and where the light enters, opening up the space and removing some original walls to allow light to flow through, for better use of natural light and circulation around the building.

Playing with light

There are two moments of manipulation of light in this scheme.

1. A coloured glass film that projects iridescent colours onto the stairs. A sensory experience for your sight as the light shines in and projects the colours before you climb to the top.

2. The second way is within the stair design. Three music pods at different levels which the user can sit in dark lighting and immerse themselves in the music world to be inspired. This allows the users senses to be focused on their hearing with no distractions.



## FIVE SENCES

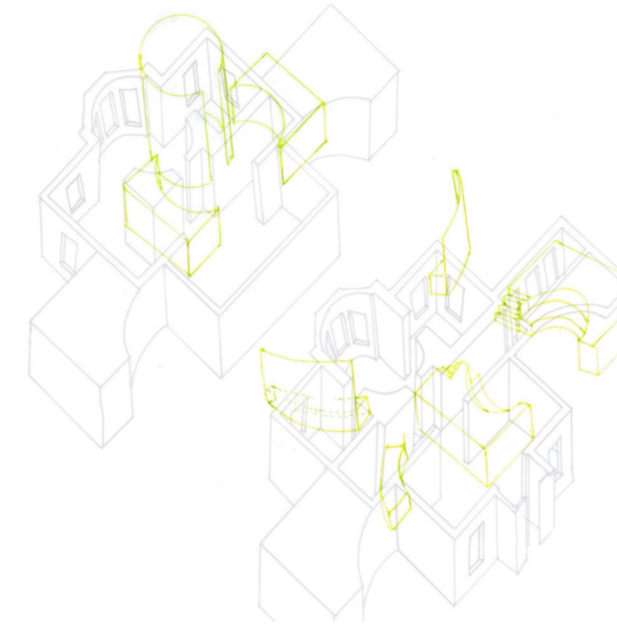
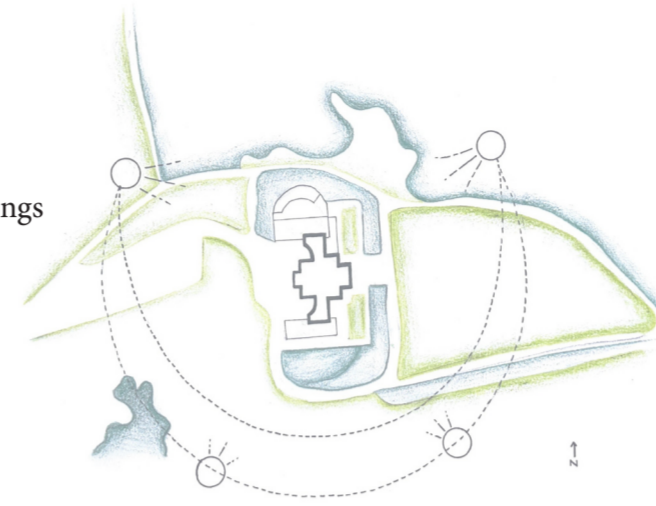
TOUCH- Sculpture, clay and use of found materials  
 HEAR- Listening to music to inspire art and direct feelings  
 TASTE- Café, informal style  
 SMELL- Painting, different smells of paint  
 SIGHT- Photography and use of light  
 Some of these link and cross over

## CURVES

As well as the curve of the staircase this has been mirrored both upstairs and downstairs. This softens the rooms and allows more flow through the spaces. Keeping it symmetrical and using the natural curves in the building, keeps with the buildings character and style.

Downstairs, a café seating area. In the same shape curved into the space while the café sits above it on a platform. Raising the floor level in the café/ entrance to create different areas and to make it cosier while keeping it light and bright with the big windows. This is mirrored upstairs for the photography studio area.

In both therapy room built in curved seating has been mirrored across. This also acts as a wall to separate the rooms up.



## ACTIVITIES



## A-A PROPOSED SECTION

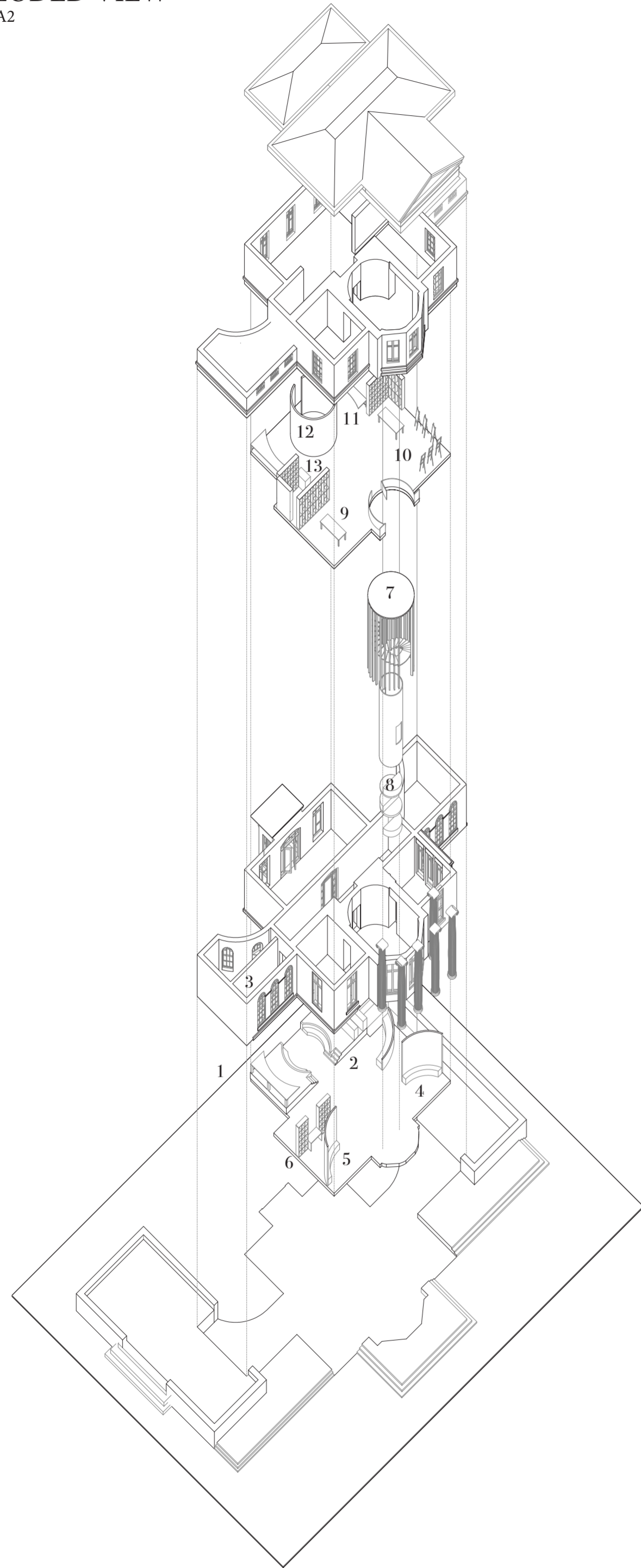
1:100 @A2





# EXPLODED VIEW

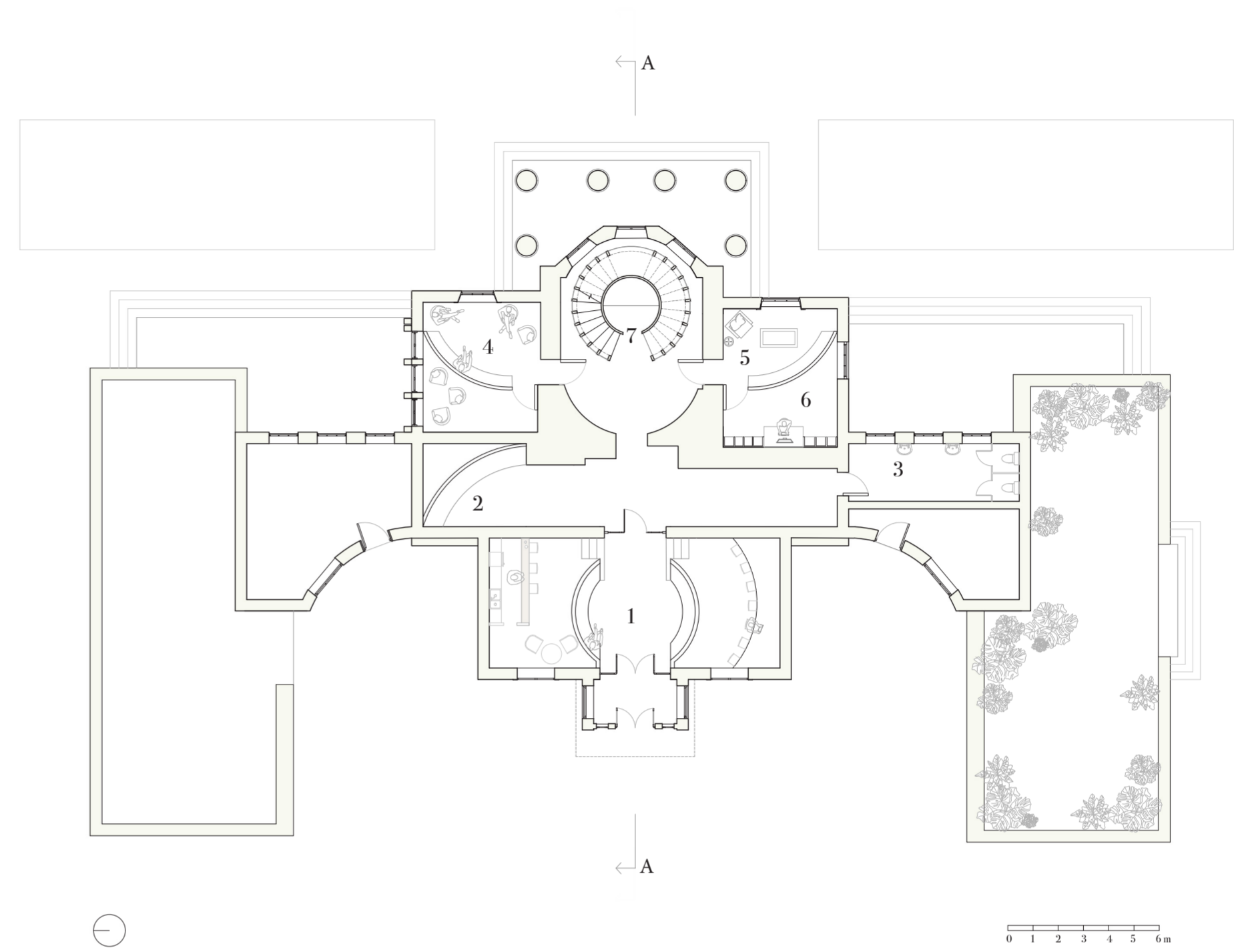
1:200 @A2



# PROPOSED GROUND FLOORPLAN

1:200 @A2

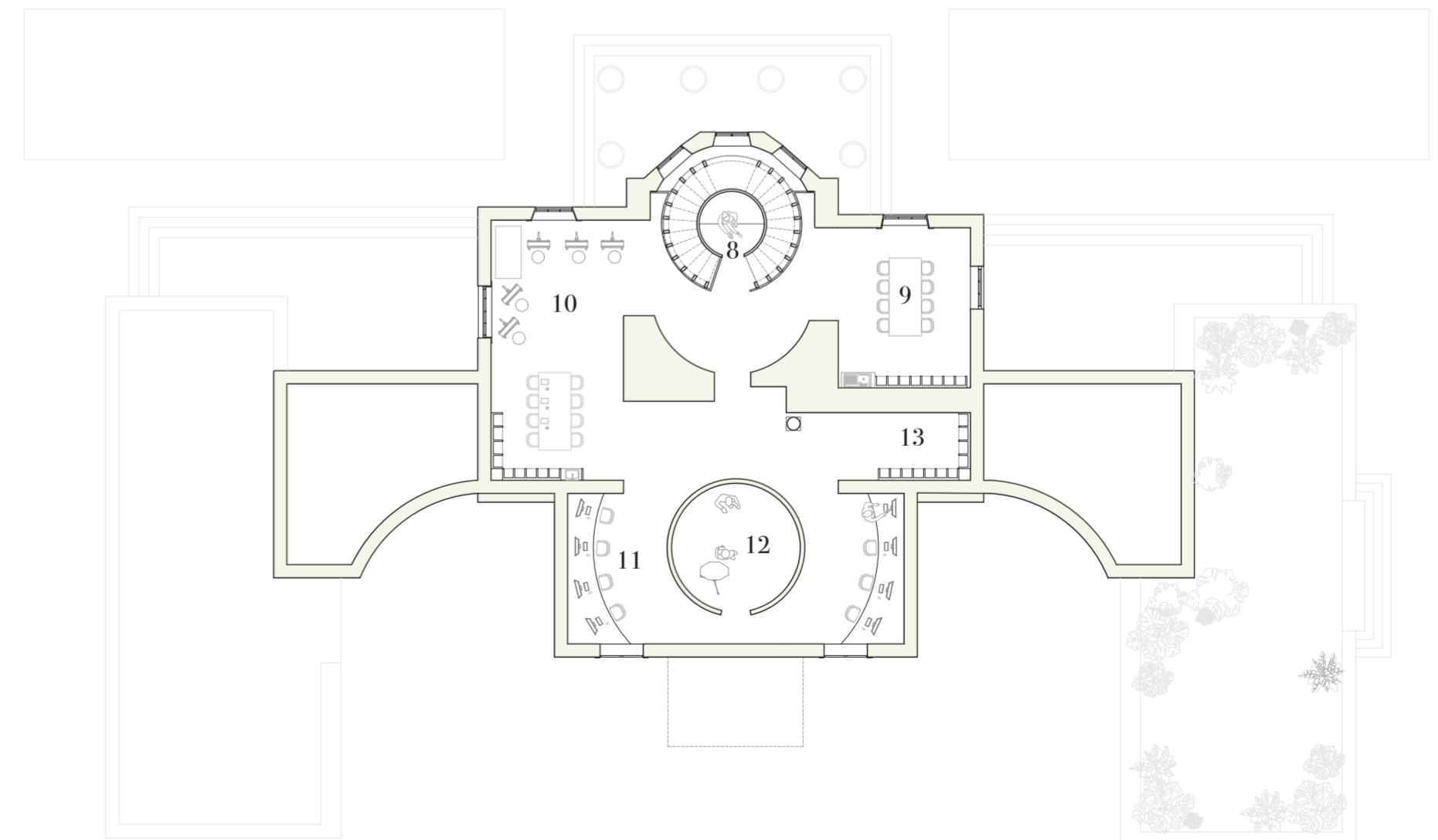
- 1. Café
- 2. Seating
- 3. Toilets
- 4. Therapy room 1
- 5. Therapy room 2
- 6. Office
- 7. Staircase to workshops



# PROPOSED FIRST FLOORPLAN

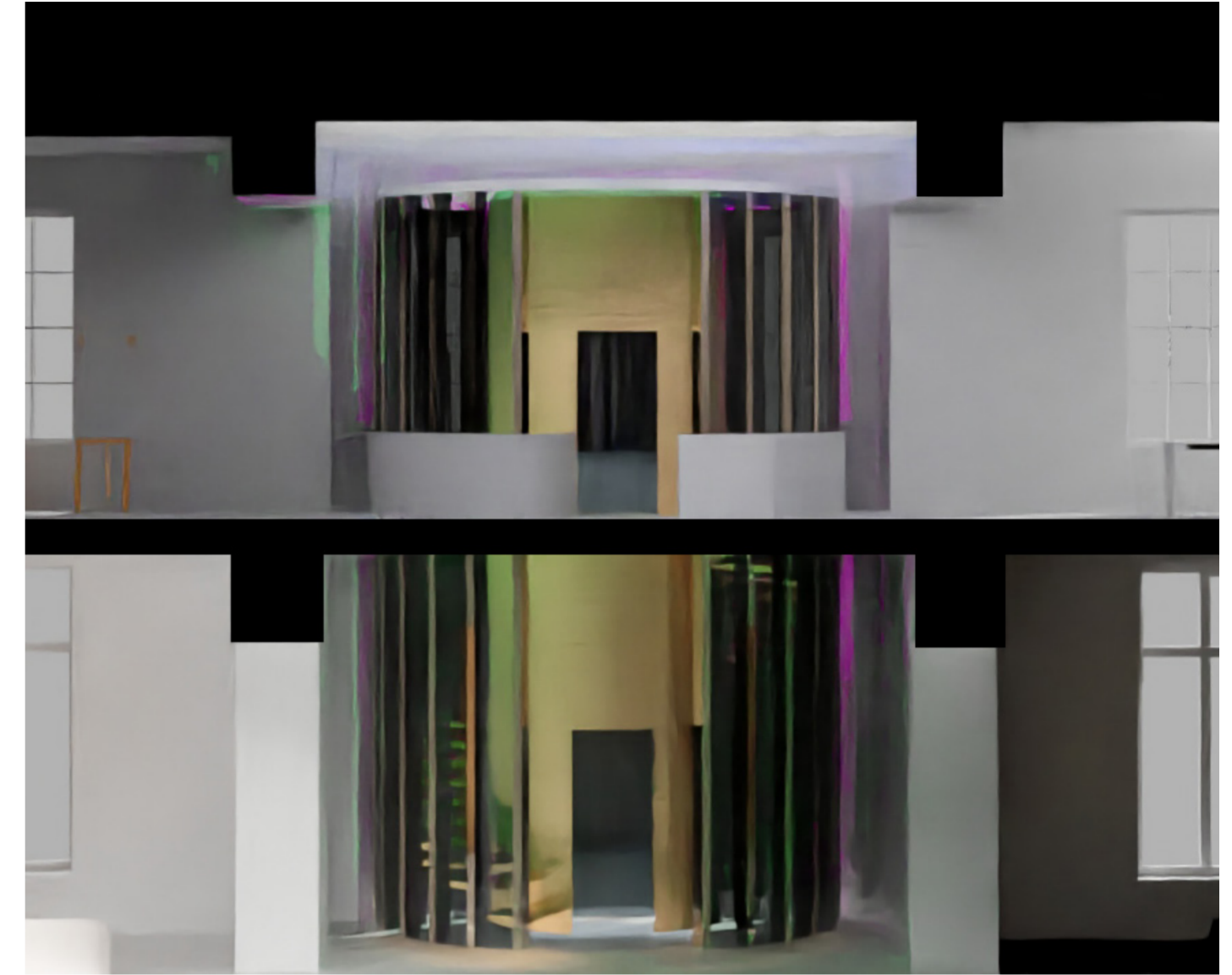
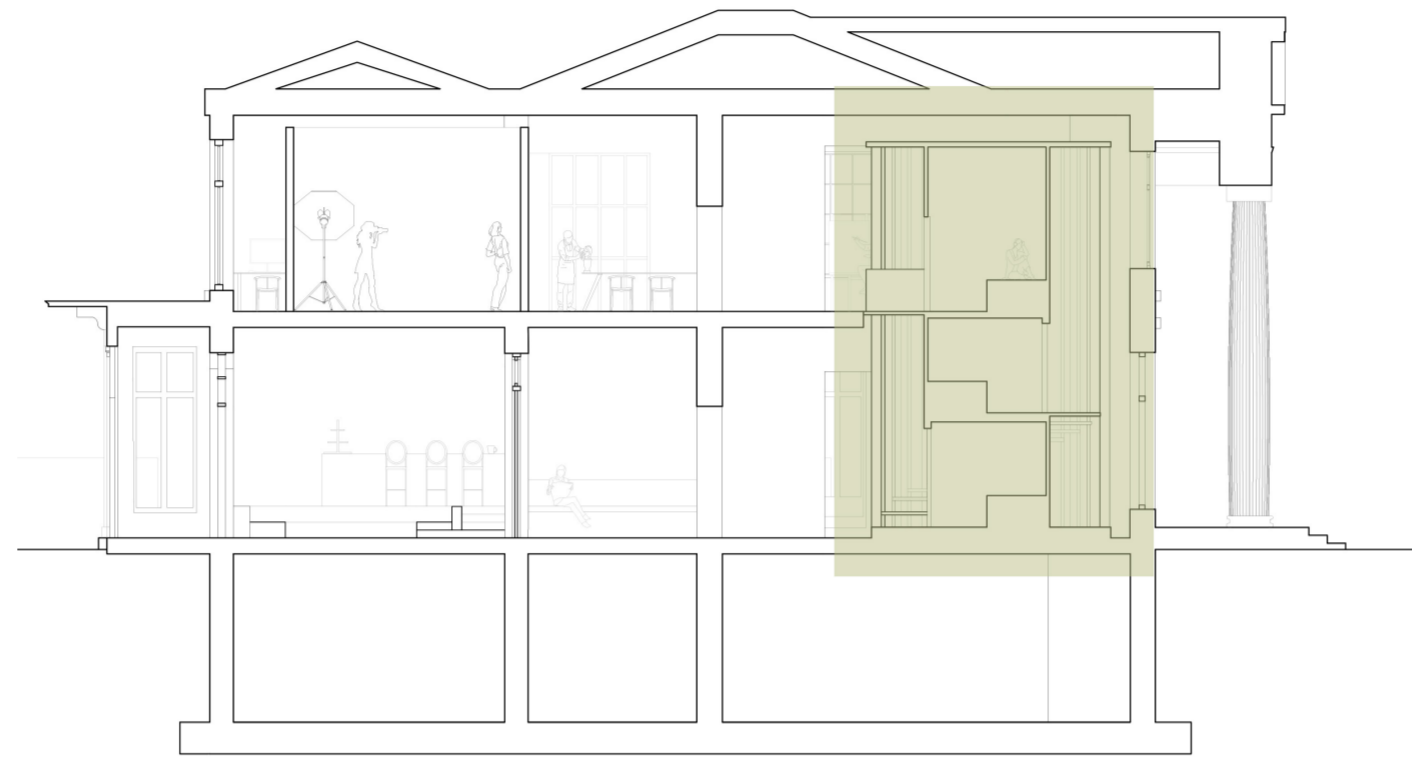
1:200 @A2

- 8. Music pods x3
- 9. Sculpture workshop
- 10. Painting space
- 11. Computer area
- 12. Photography Studio
- 13. Materials room



# DETAIL COMPONENT

Helical staircase made out of steel, oak and glass. This is located to the east of the building in the bay windows. It has an iridescent glass to create a sensory experience of colourful light as you walk within it and travel to the upstairs workshops. Within the inside is a void that is occupied with 3 music pods to allow users to immerse themselves in music and be inspired.



## MATERIALITY

1. 12mm curved glass sheets
2. 2mm Coloured film
3. Steel frame the glass slides into
3. 200mm x 100mm Solid bronzed steel frame
4. 1300 mm long steel rod, slides through the steel frame on both sides and holds the tread
5. Oak timber treads
6. 3mm cork acoustic cladding
7. Steel frame
8. 3mm cork acoustic cladding

## EXPLODED VIEW DETAIL COMPONENT

1:10

