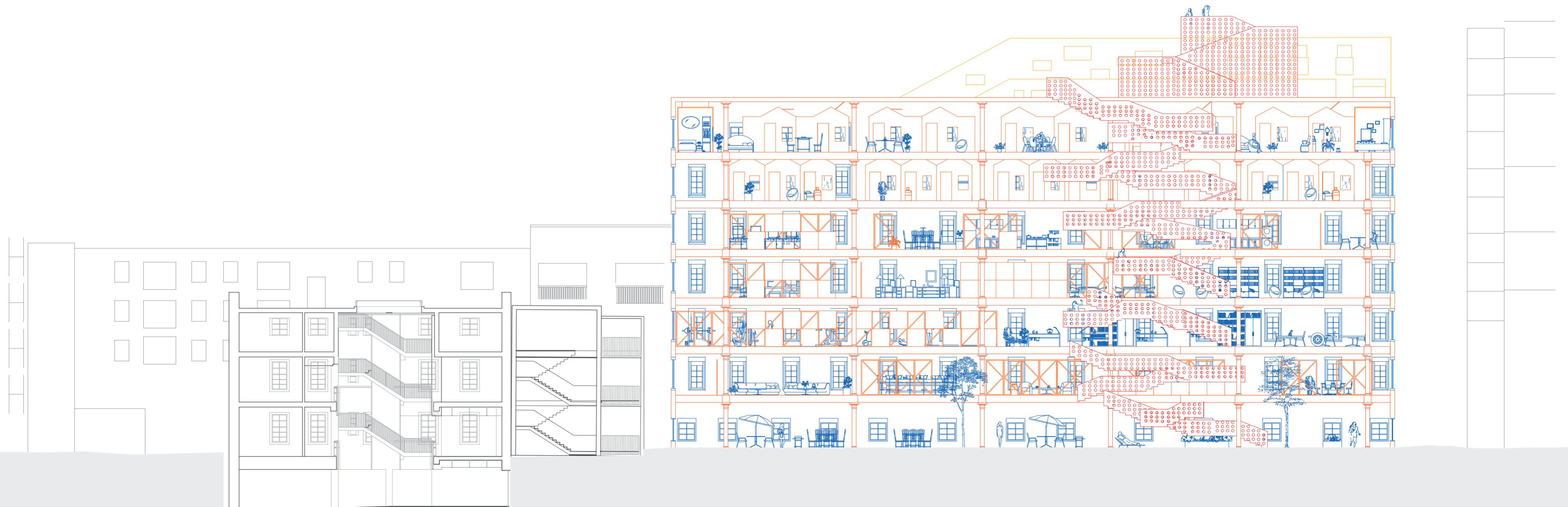


THE DIVINE HAVEN

181.Social.C24_01

This project is based at the former Tetley Brewery site, now demolished, but aims to reconfigure it into a form of co-housing. It envisions a community of women where living spaces empower residents. This community will foster connections and shared strength, transforming residential living into empowering havens for mutual growth and support among accomplished women who thrive in an inspiring, collective environment. This haven will host events for women to network and immerse them-selves in a nurturing space that supports their growth into powerful individuals.

The Divine Haven will recognise the importance of women communities and how they help women become empowered are instrumental in encouraging women to be their best self's. The intrinsic gender prejudices in traditional networks have pushed women into building their own communities, such as entrepreneurship, mums, tech, or other facets of living. women communities are safe spaces that make it easier for women to be candid, original, authentic, and where expressions of vulnerability are encouraged.



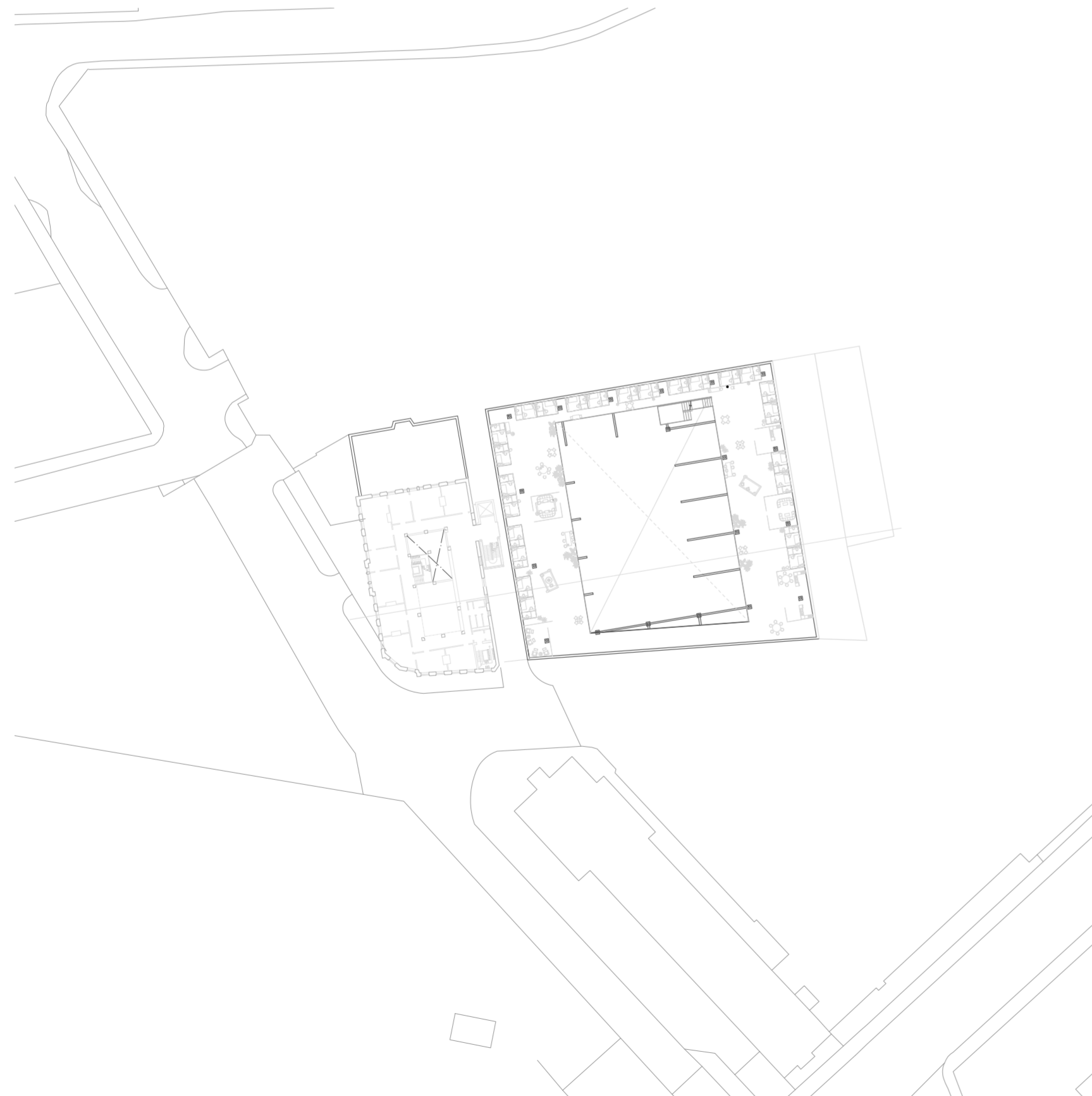
The proposed demolished brewery, section in context 2024 1:200

SITE AND PLAN

Information about current and historic site

The Tetley offices and the Tetley Brewery was the place where Tetley ale was brewed, as well as where up to 1000 people were employed, it was once the world largest producer of cask ale. the brewery sadly closed in 2011 and was quickly demolished. The Tetley offices now house unique gallery spaces, a learning studio, a bar and kitchen as well as spaces for meetings, events,

performances and conferences, the Tetley offers a vital public platform for Leeds art scene. There are plans that the Tetley will face redevelopment, just like the surrounding buildings. Aire park is a re-development scheme that Hunslet, Leeds is currently facing it includes multi storey apartments, shops and commercial spaces.



The proposed demolished brewery in context (not to scale)



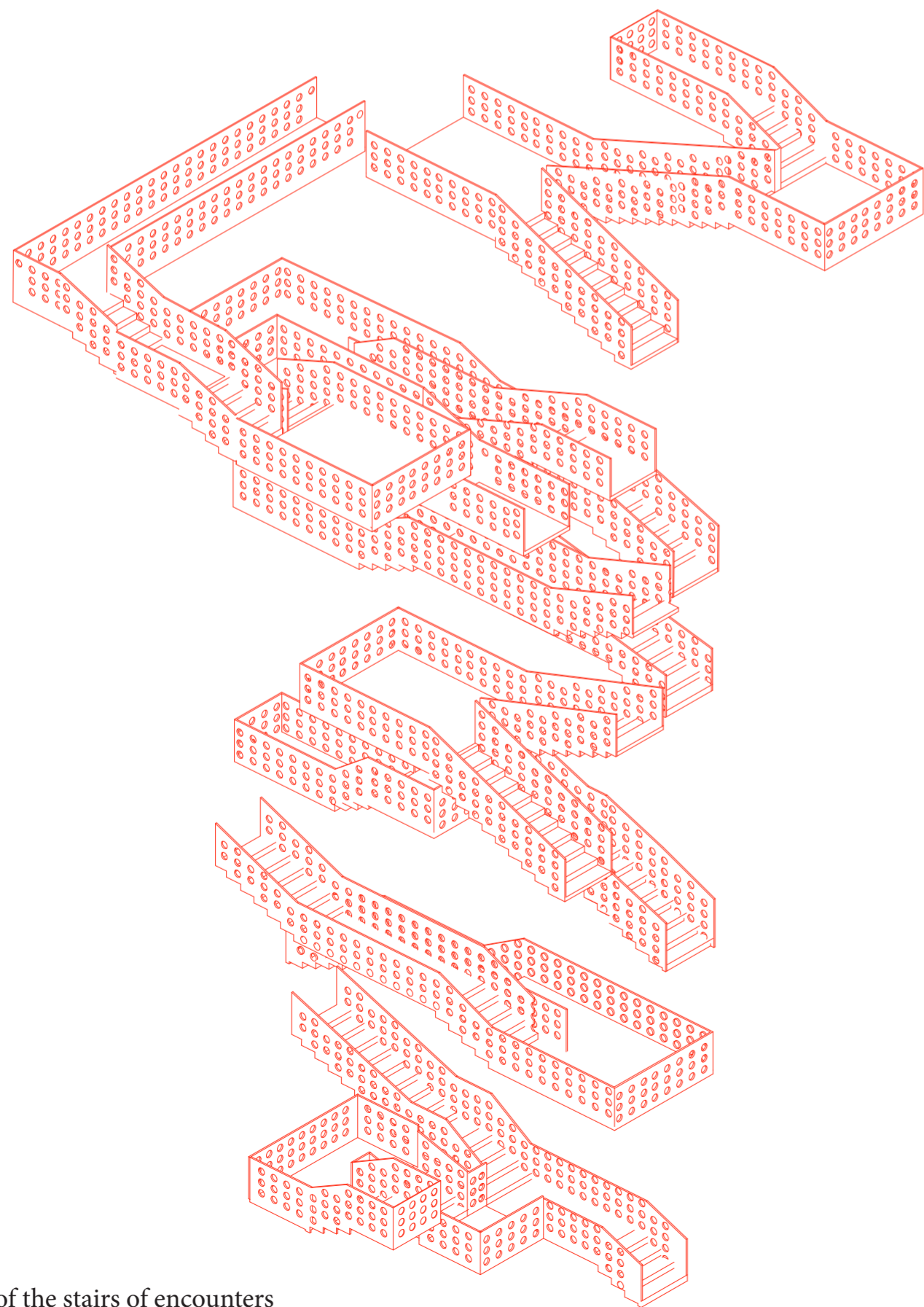
The proposed demolished brewery floor plan 1:200

KEY DESIGN MOVES

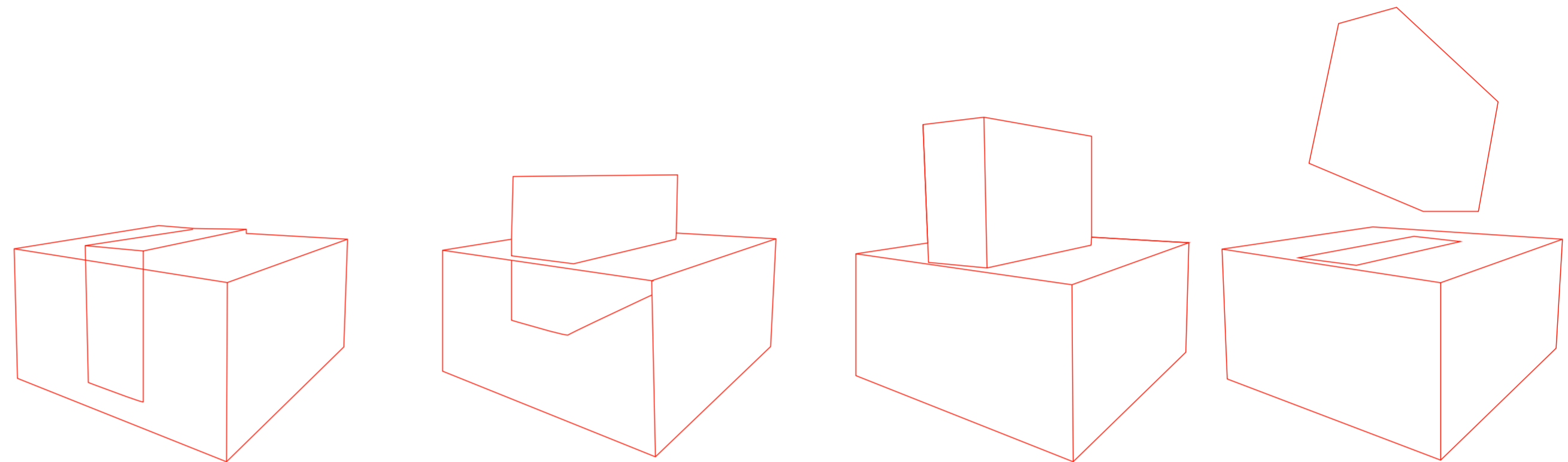
Stairs of encounters and void

The key design moves within this project are, the puncture of the brewery which will expose the interior of the building, you are able to see each floor and the activities that are taking place within the brewery. The void will be uncovered exposed to the elements allowing Leeds northern weather to enter the building, this also allows

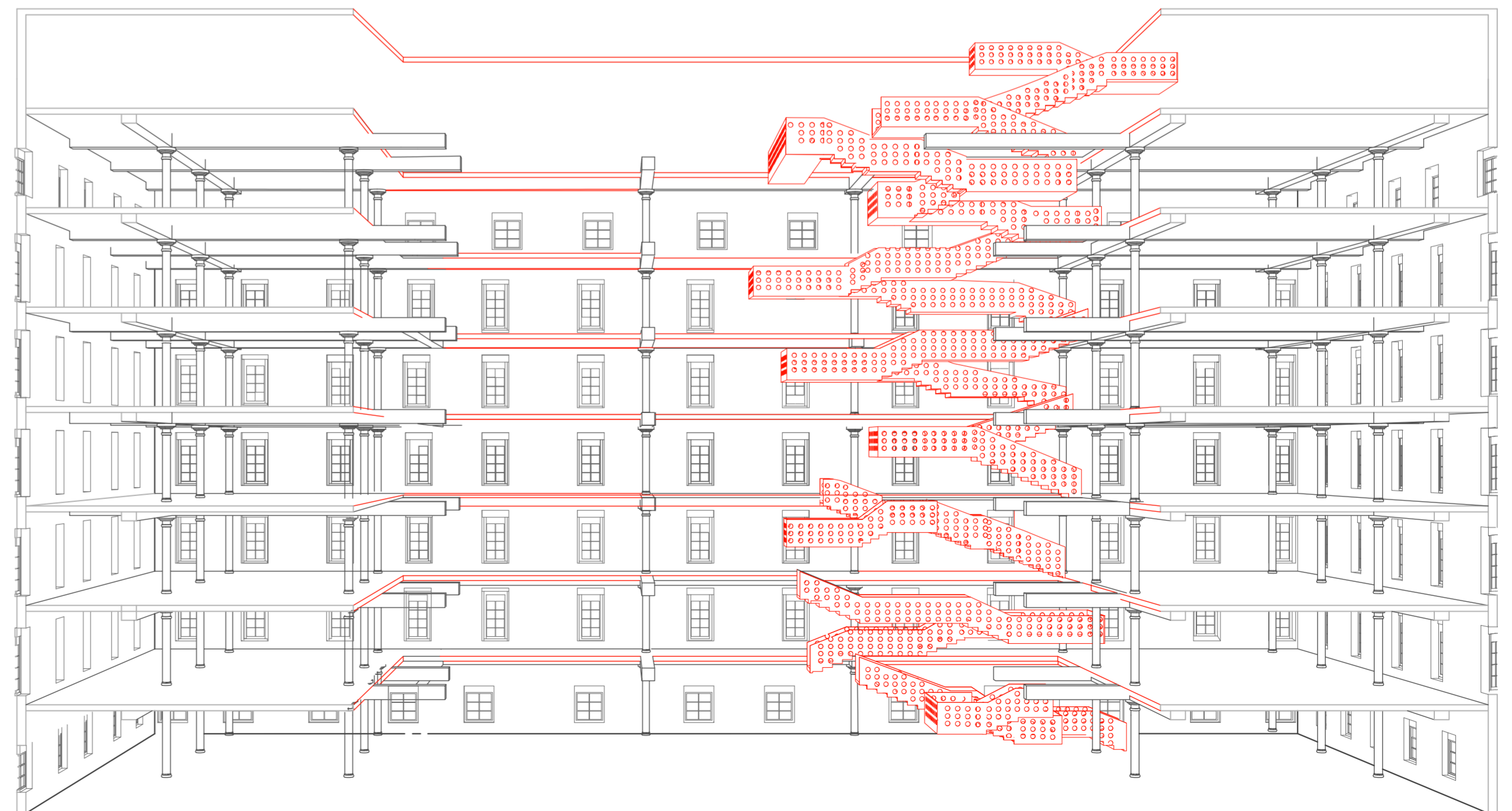
there to be a shared garden and outdoor activity space. There will also be an intricate and complicated staircase that protrudes through the building and each landing can act as a space to stop and allow for encounters, sitting, viewing, and creative hobbies to take place.



Axonometric of the stairs of encounters

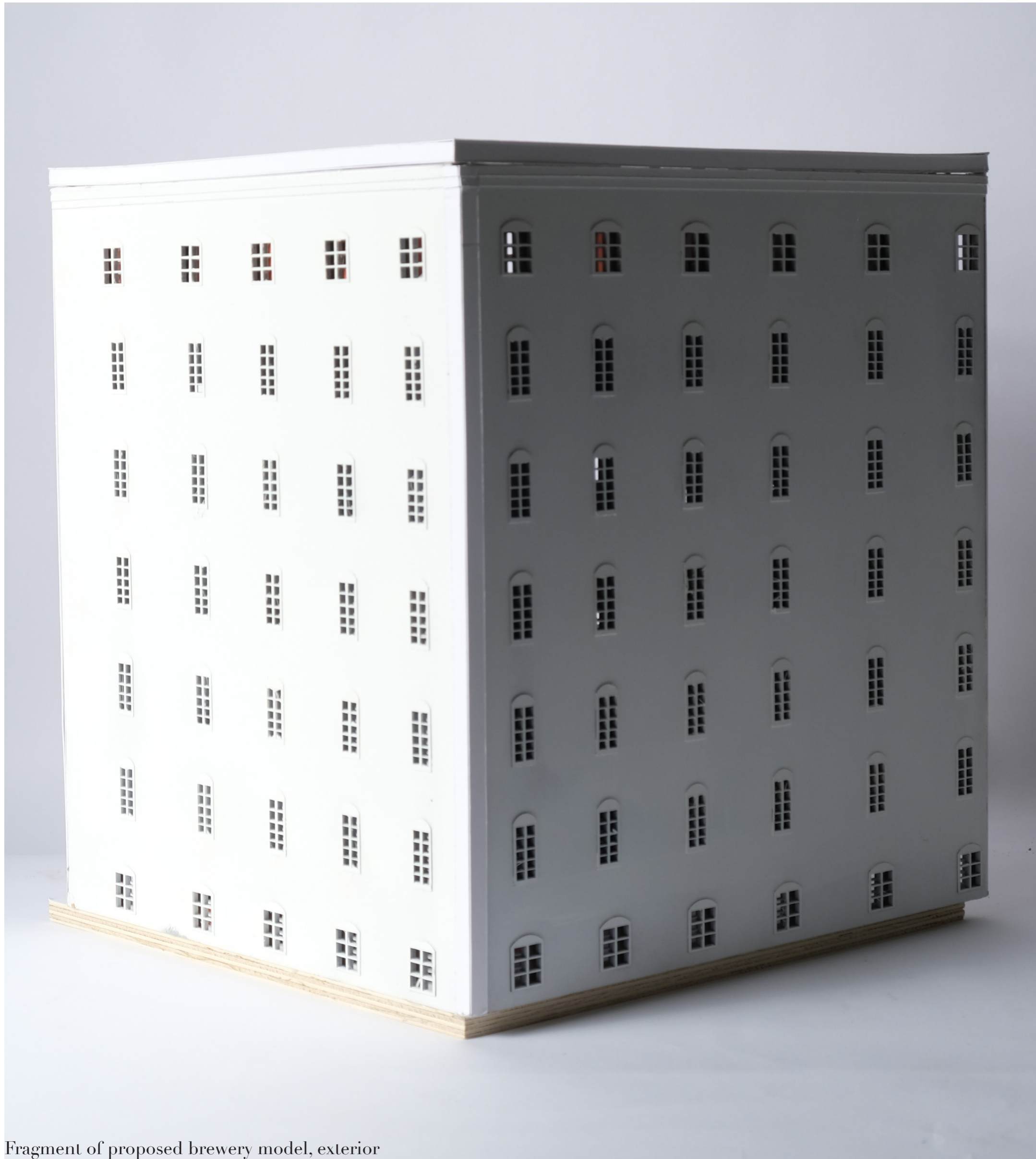


Development of void within the center of the brewery

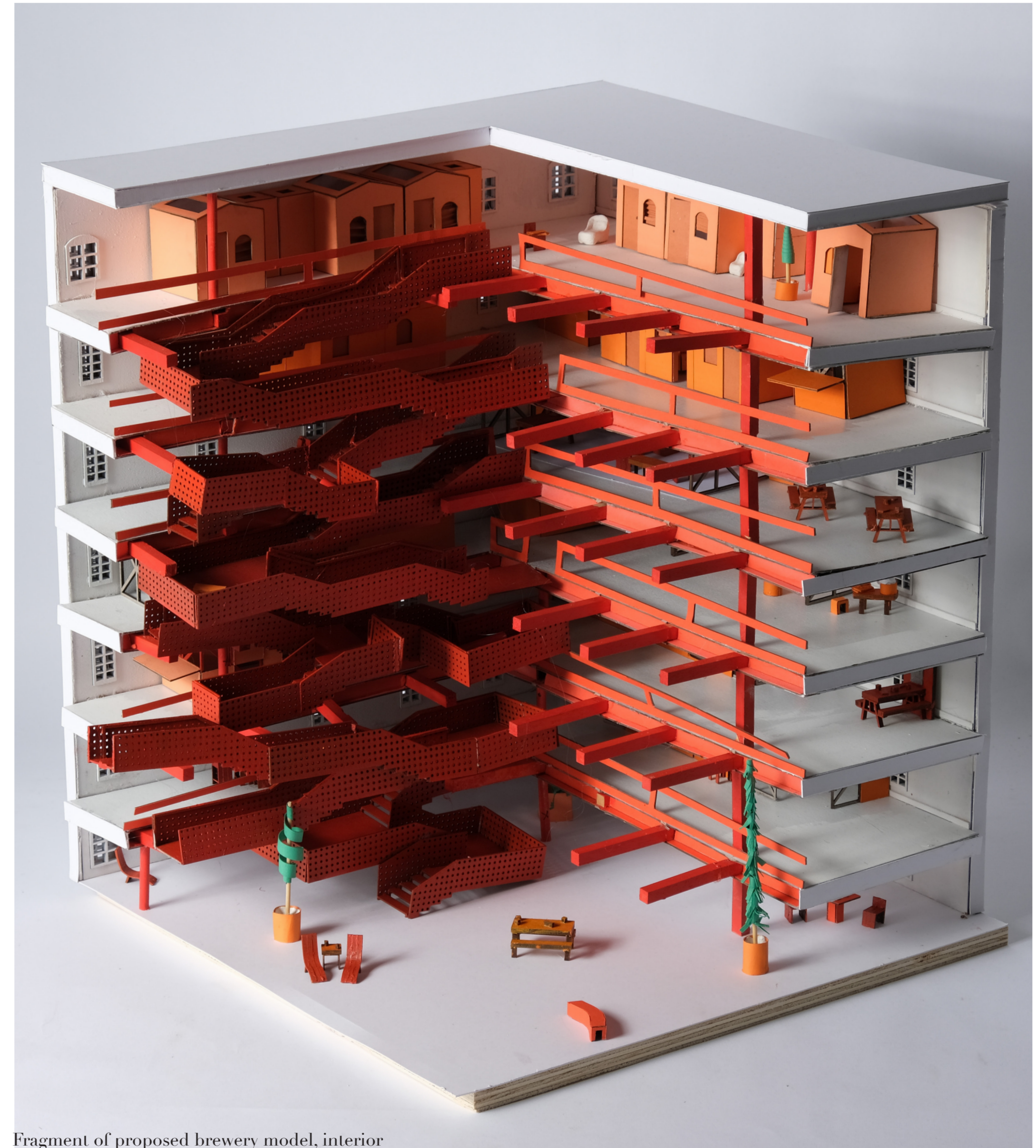


Perspective drawing of proposed key moves throughout the brewery, the void and stairs

FAÇADE AND INTERNAL IMAGES OF MODEL
Brewery model



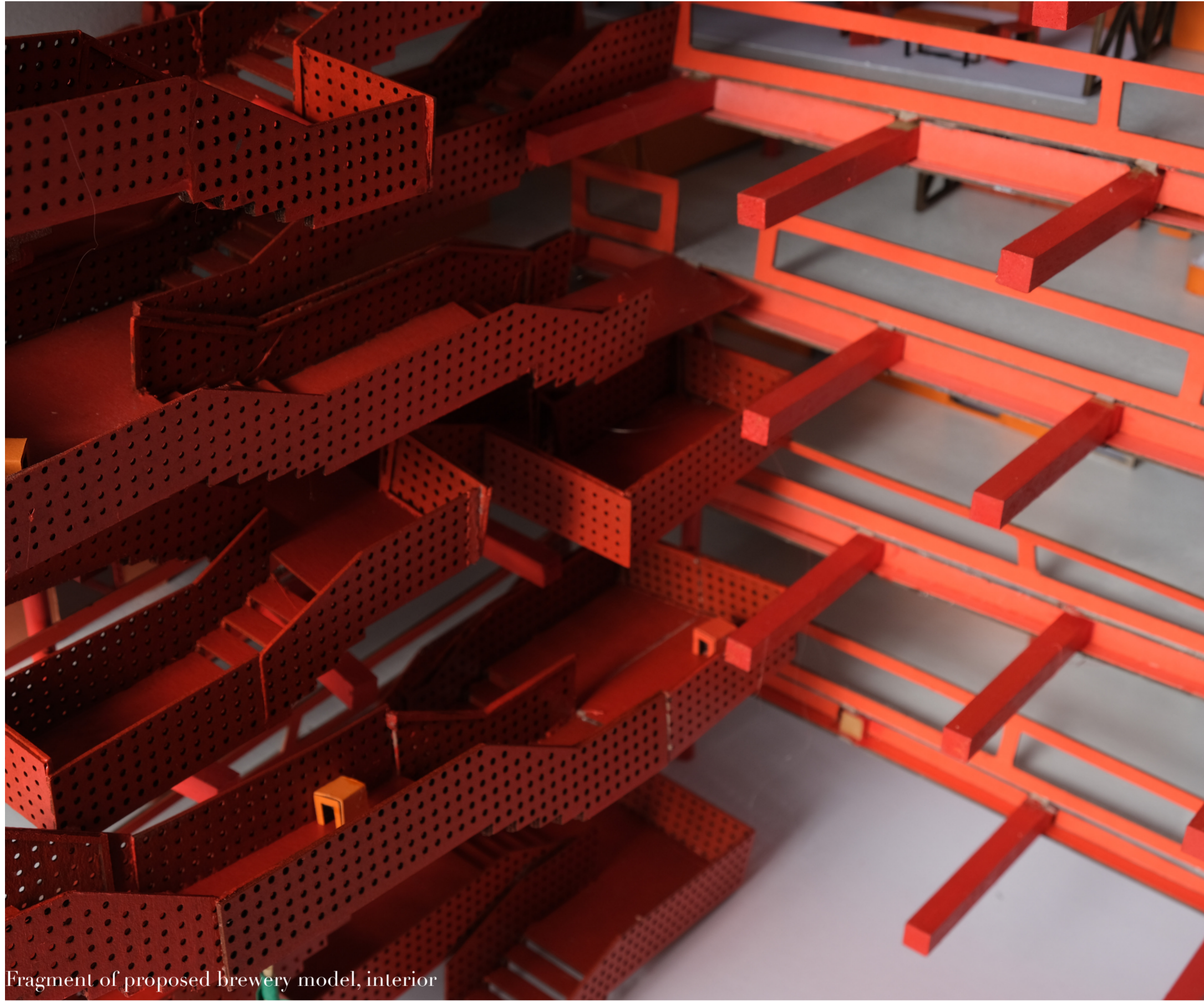
Fragment of proposed brewery model, exterior



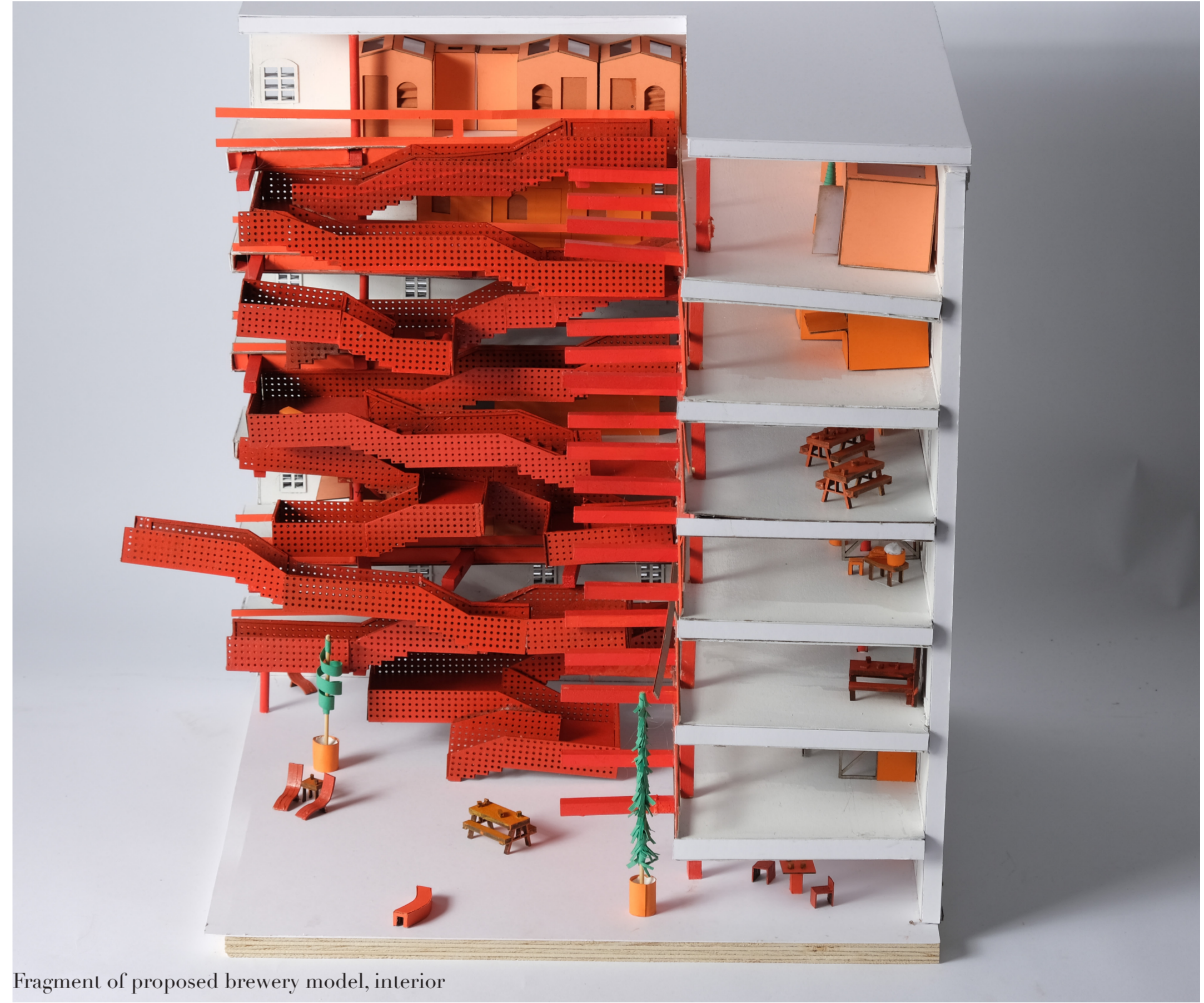
Fragment of proposed brewery model, interior

INTERIOR IMAGES OF MODEL

Including stairs of encounters and inhabitation



Fragment of proposed brewery model, interior



Fragment of proposed brewery model, interior

