

# A Writer's Journey

Overlooking the scenic views of Lake Windermere, surrounded by the nature of the Lake District rests the Claife Heights Viewing Station, built entirely of stone masonry with the purpose of observing the external. It is proposed the site will be sympathetically renovated and reclaimed. 'A Writers Journey Through the Landscape' will be a series of internal and external spaces merged into the landscape designed specifically for writers and book lovers. 'A Journey Between Spaces' consists of two trails directed by a natural water stream that will emerge from the existing landscape, public and private, providing the writers with an intimate experience through the writing pavilions. 'Moments of Reveal' will allow for these paths to unite, capturing external seating with fire elements that allows the writer to interact with the public whilst taking in the lovely scenery.

As 'A Moment for Writing' unfolds the writer begins to engage directly with the existing landscape through dark, narrow passageways into the cliff, exposing the textures within. High up into the treetops catching the sounds of the wind and birds, far out onto the lakes surface for an immersive experience with the water and embedded underground directed by the natural light above. These pavilions are grounded to their location through materials that respond to the surroundings, creating a design palette of locally sourced quarry stone, oak wood from nearby felled trees, manipulating the lake water to interact with the space, and connections with the Earth's natural textures.

The 'Concealment Review' will exist along the ground floor of the Viewing Station permitting private lighter and darker spaces with smaller and larger groups that reflect on the writer's vulnerability. Fold-able, multifunctional furniture will be used throughout these spaces aimed to accommodate the user's individual needs and make the most of the intimate spaces. Along the first floor 'Performance Exploration' is situated allowing the writer to gain criticism and feedback within a public environment. The space will offer an immersive experience as projections and surround sound begin to recreate the external atmosphere, the sounds of birds tweeting, water overlapping the shore and moving images of the natural landscape. Modular furniture will be used for this experience to allow for multiple settings within one space.

As the pavilions cumulate at the building the concepts and materials begin to cumulate also, creating spaces that interact with fire through a long expressive heater piercing through the floor levels, rain chains that allow for rainwater to pass through the building, pivoting oak louvres that interact with the wind and sunken spaces into the earth's surface, all of which respond to the Earth's changing state.

Design details within reflect on early concept ideas such as hidden lighting to reflect on the hidden pavilions within the landscape, exposing the mechanical elements of fixtures providing a connection between natural and man-made elements, and incorporating mirrors to reflect the landscape linking to the use of Claude glass. The lift is extended and merges into a light beacon that draws the visitors towards the building, marking its very existence.

Towards the courtyard area 'Reserved for Reading' and 'Shared Appreciation' are situated, offering private and public settings where the writers can display their work. Sunken spaces are created that reflect on the hidden layers of the landscape, whilst allowing the level above to reflect on the visible layers. The writers work will be displayed throughout a series of four spaces, each reflecting on a different season to enhance the writers work throughout the year.



Claife Heights Viewing Station

## Location

Building:  
Claife Heights Viewing Station

Date:  
1790s

Architectural Style:  
Georgian

Current condition:  
Restored by the National Trust

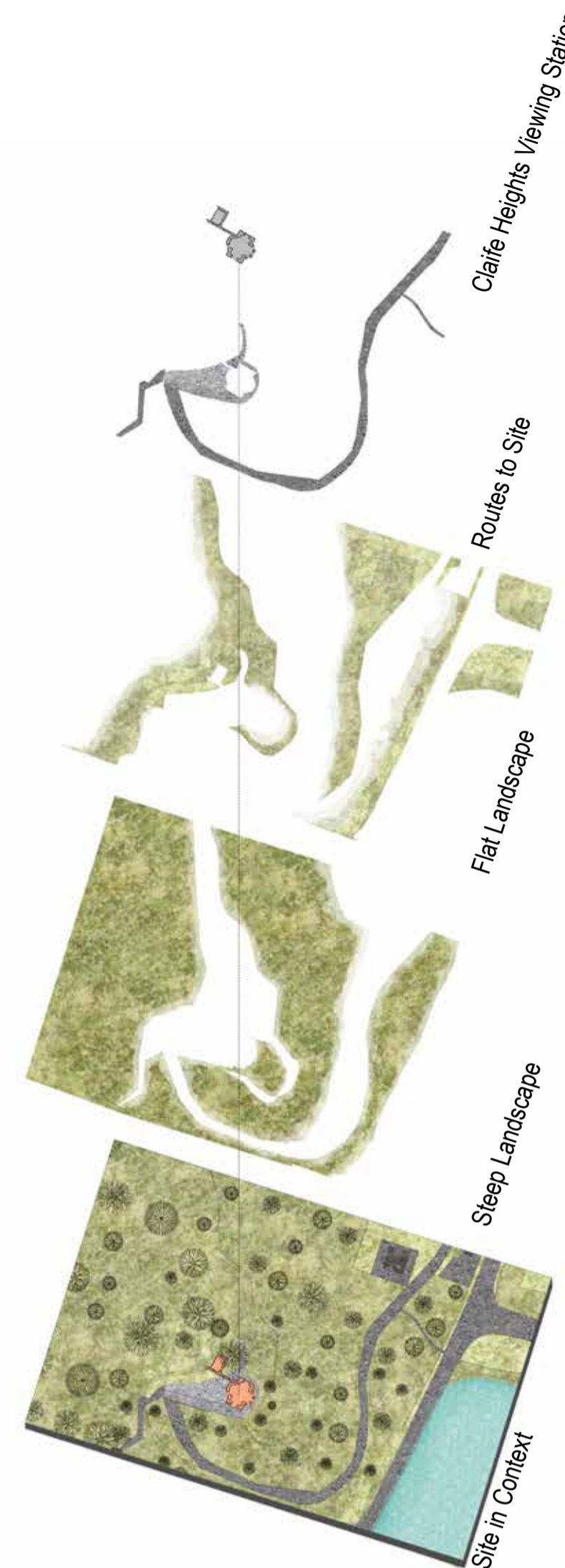
Location:  
Windermere west shore,  
Far Sawrey LA22 0LW  
Listed Status:

Grade II



Lake District

## Layers of Landscape



Human Interaction with Nature



Reflecting Seasonal Change



Spirit of the Building



Building Exterior



Entrance Space



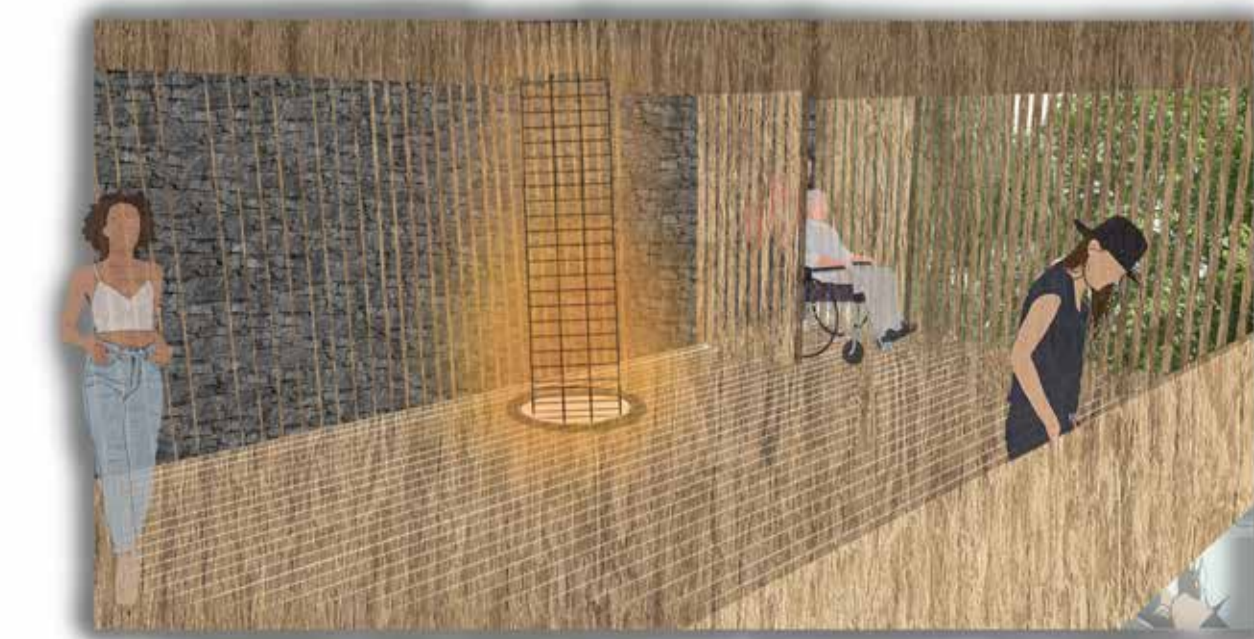
Concealment Review



Performance Exploration

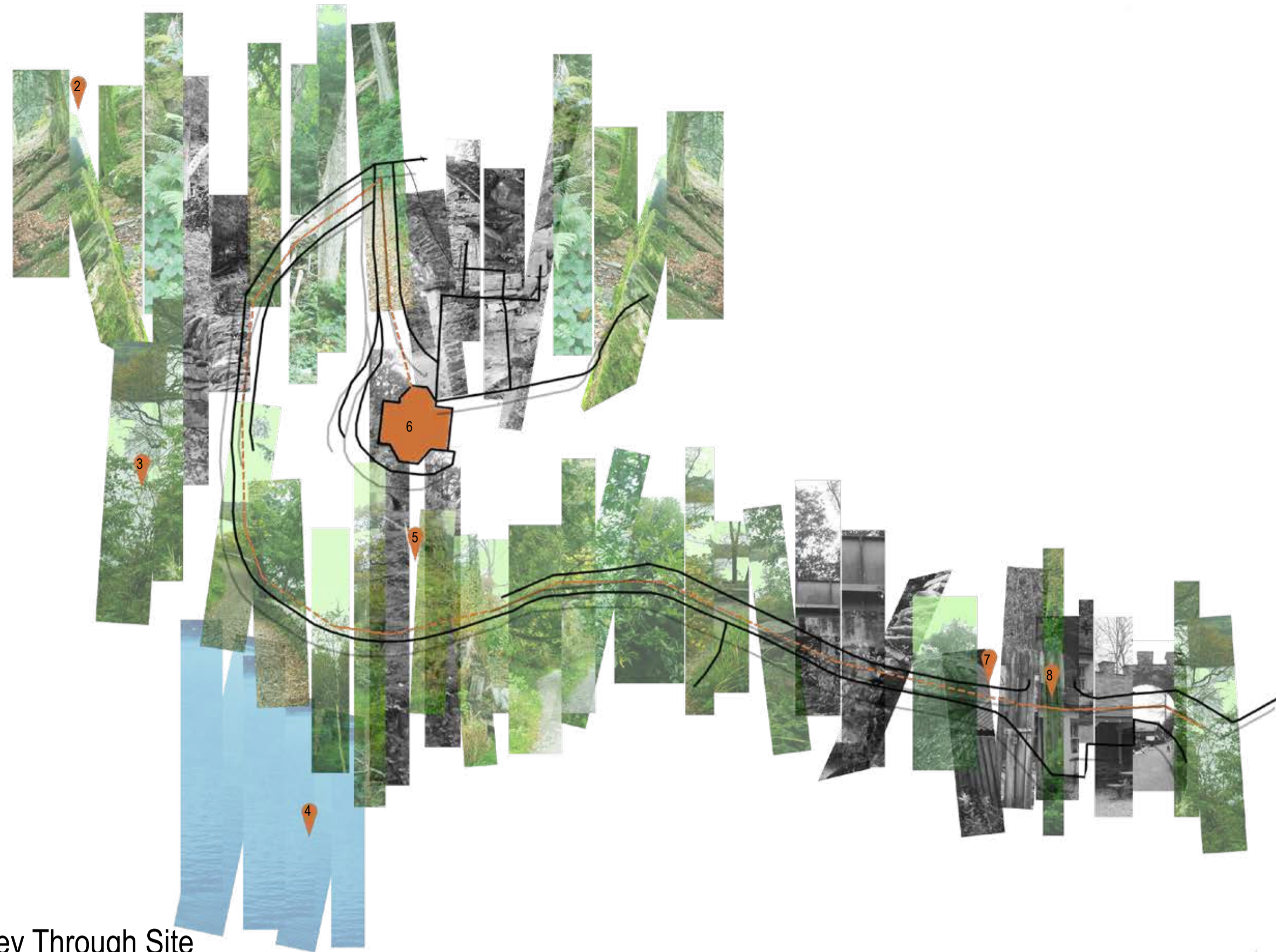


Performance Exploration - Projections

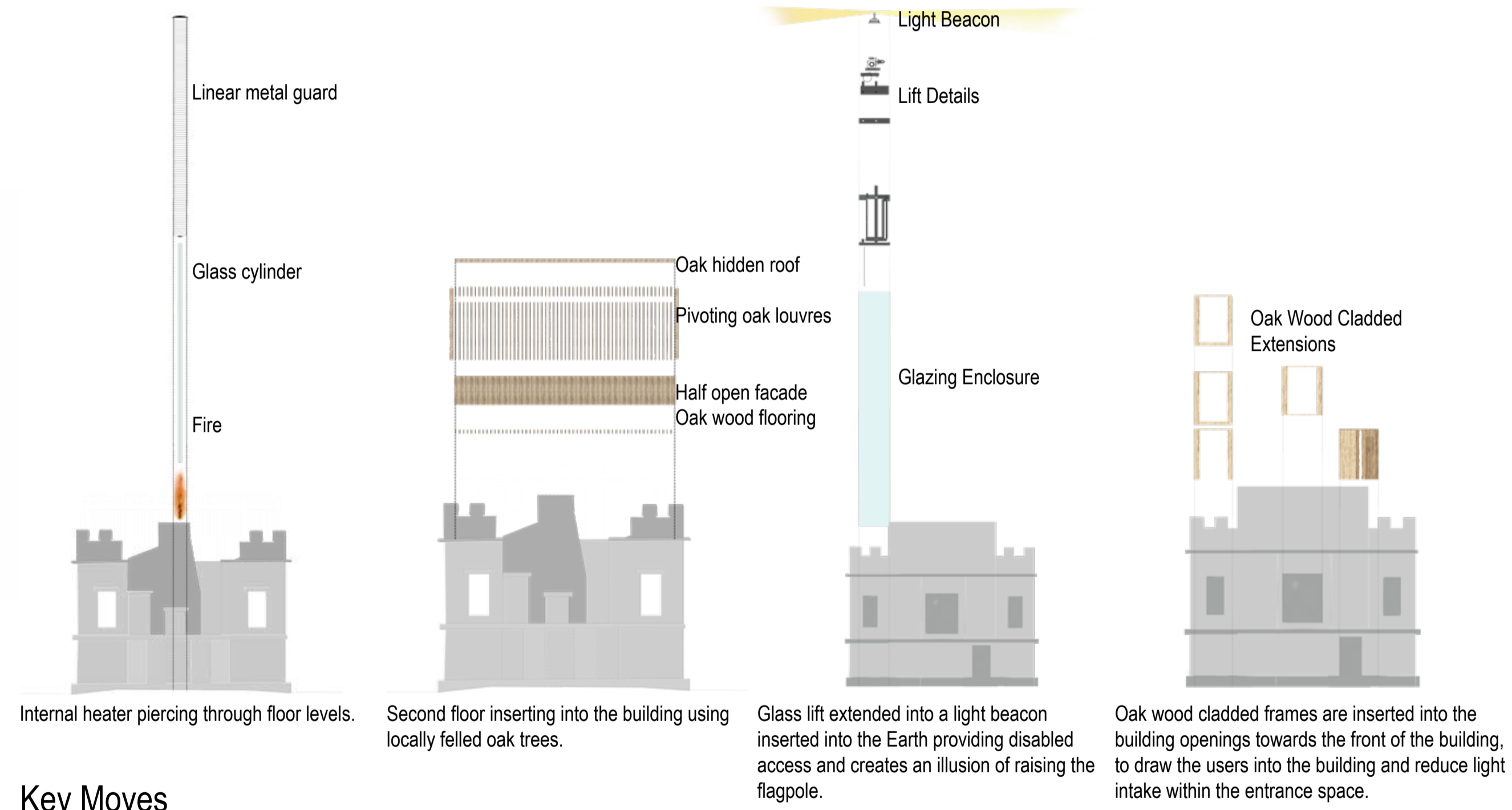


Performance Exploration and Viewing Space

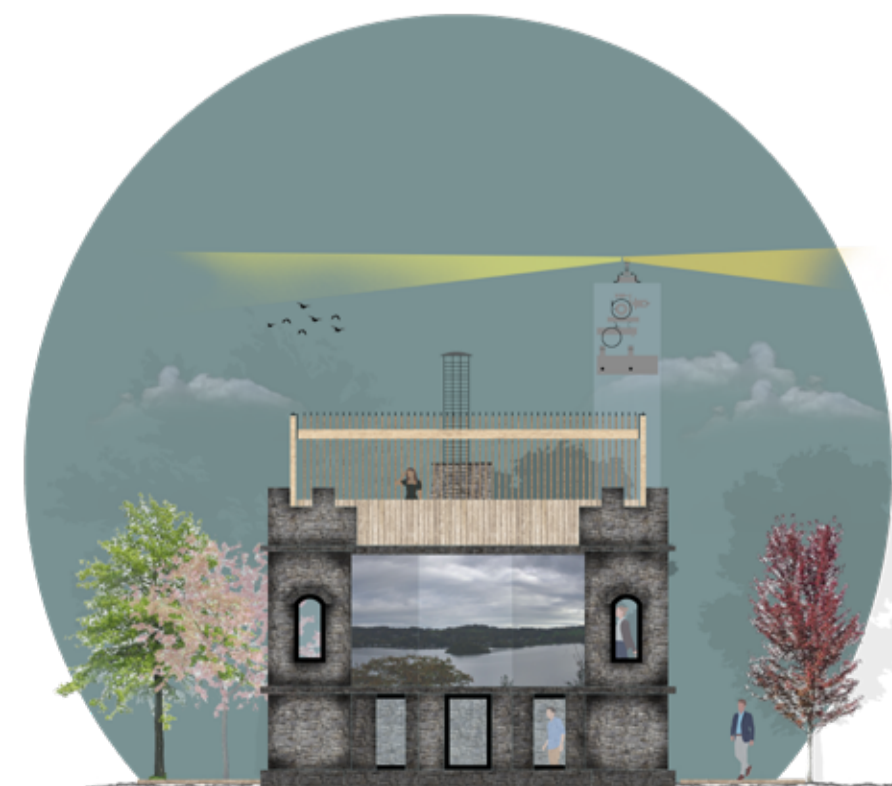
Visuals



Journey Through Site



Key Moves



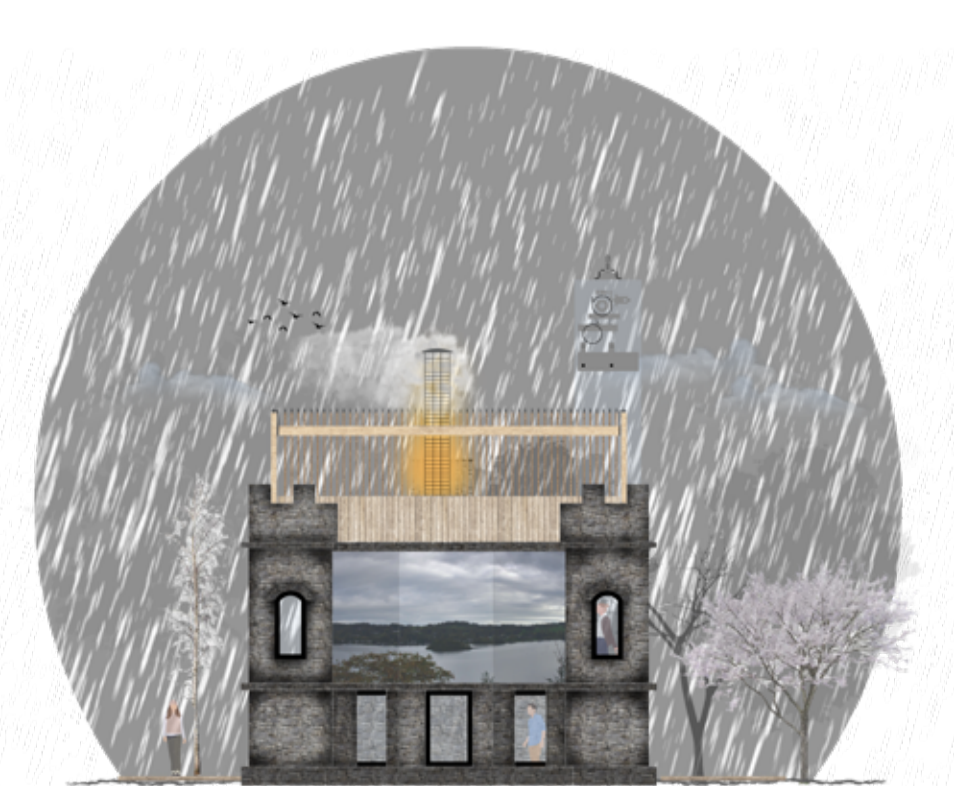
Spring



Summer

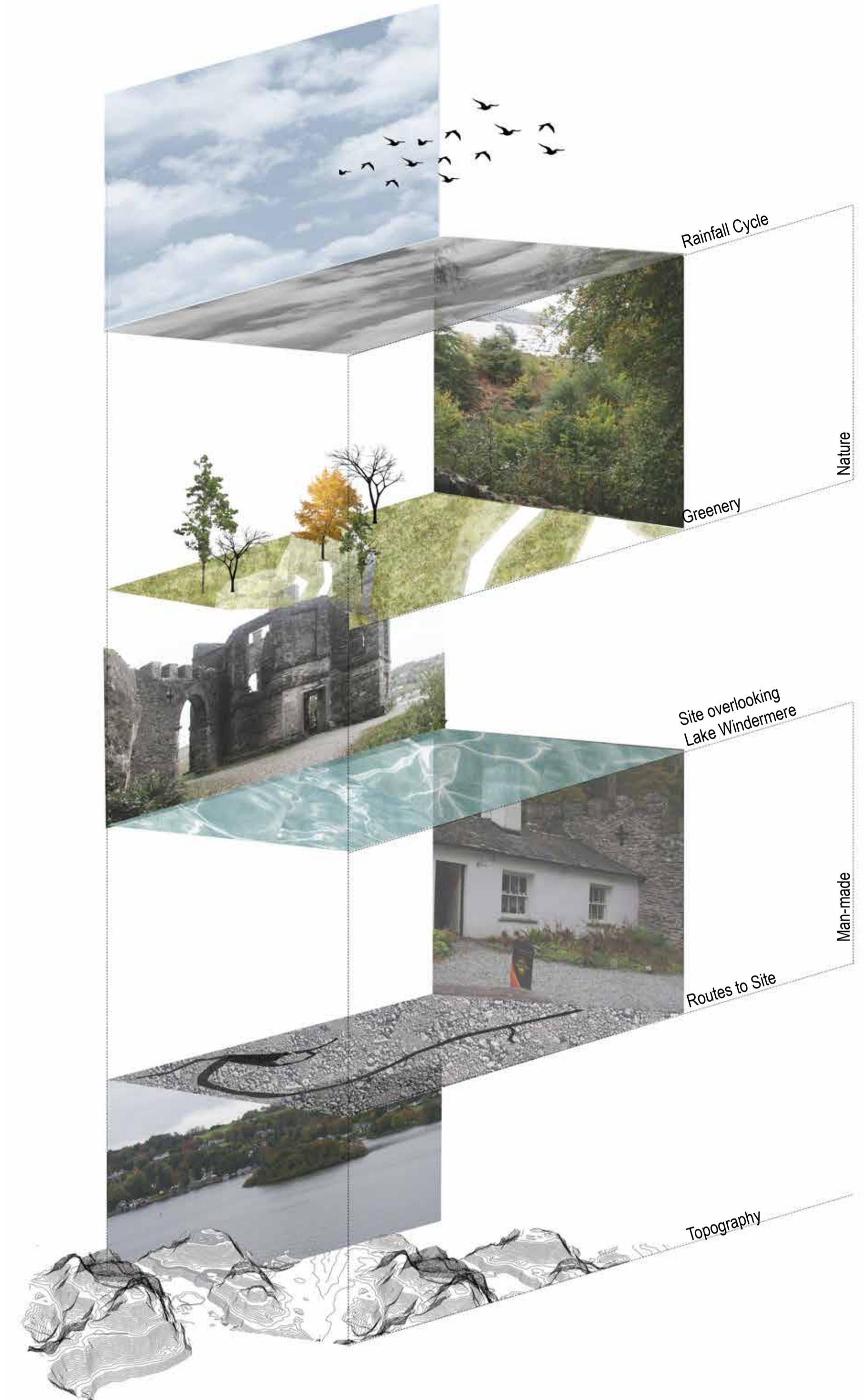


Autumn



Winter

Seasonal Change



Layers of the Landscape



Site Map



Journey Through Spaces



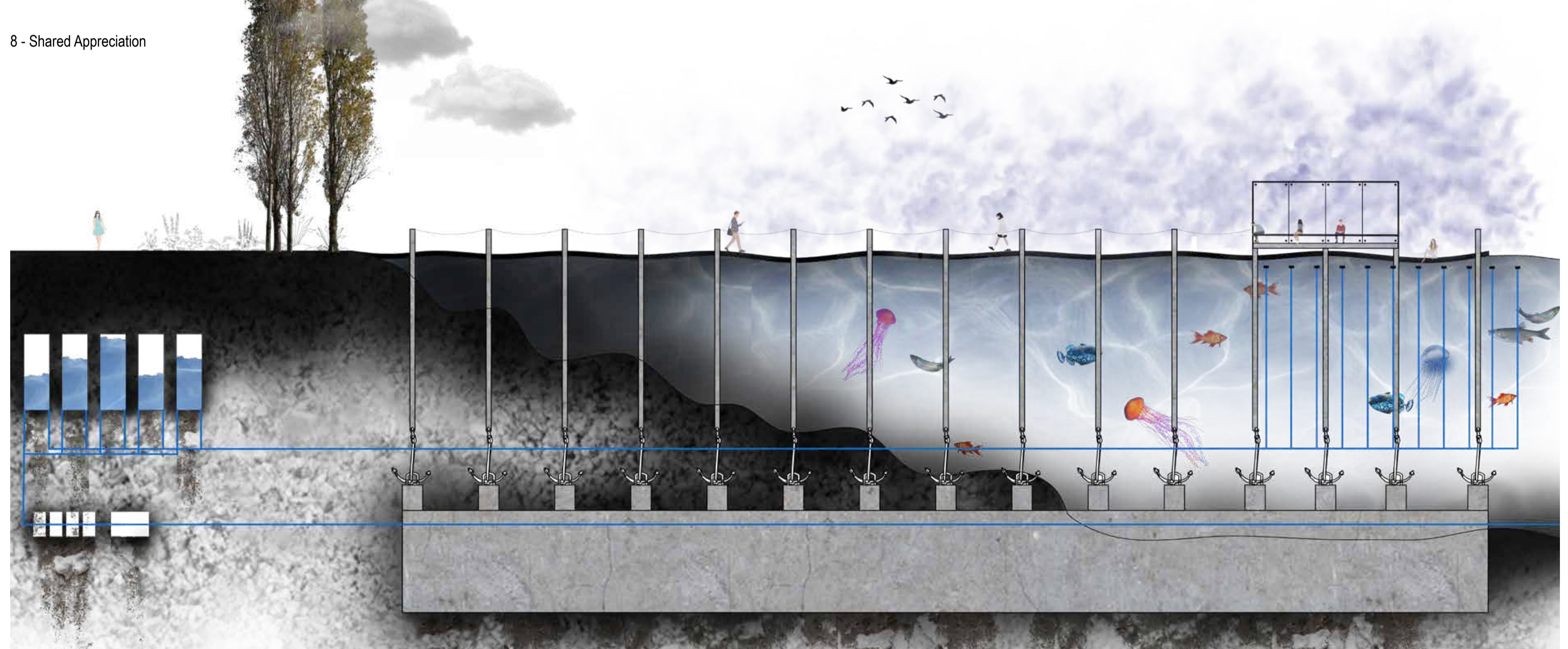
1 - Reception



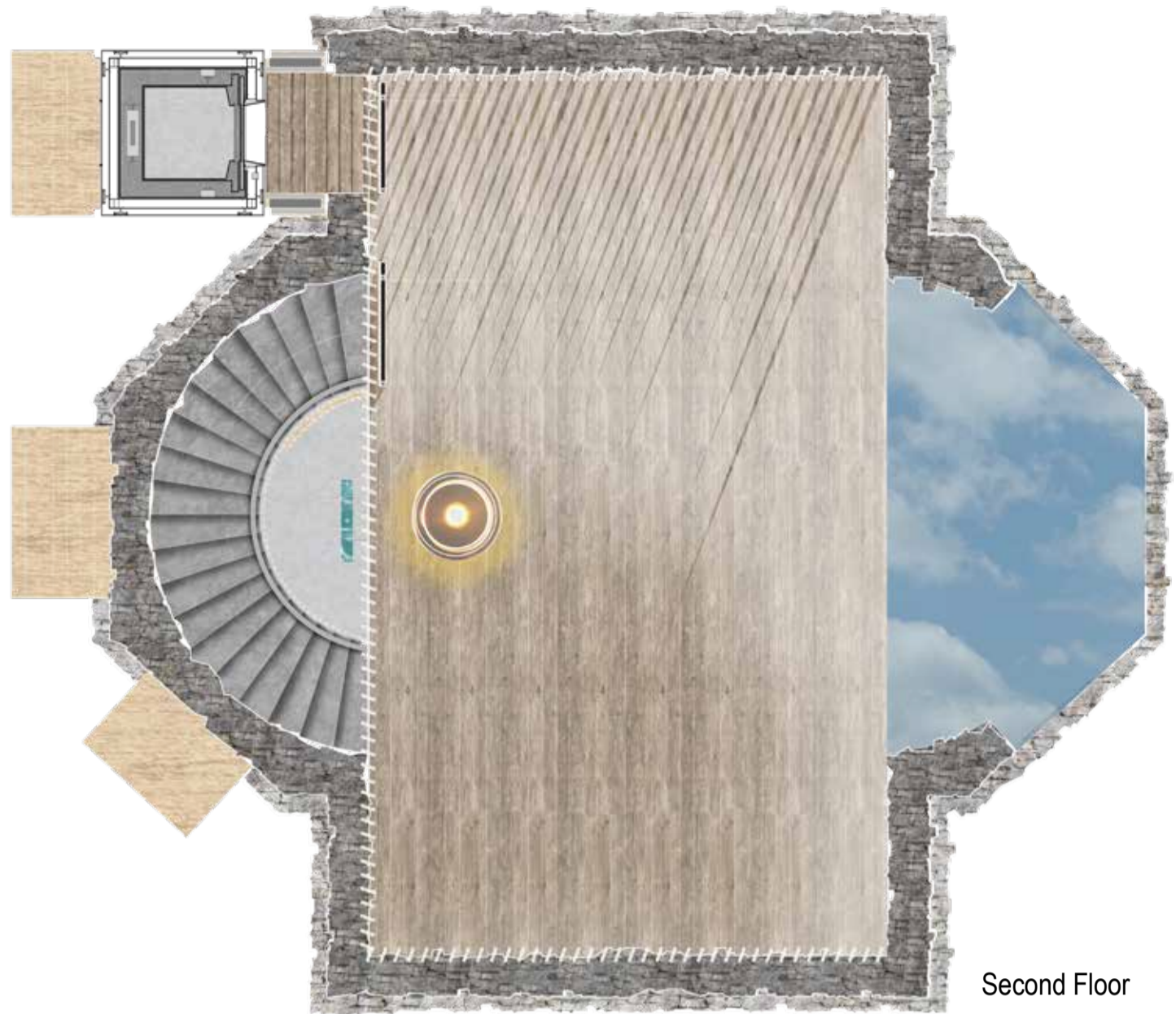
8 - Shared Appreciation



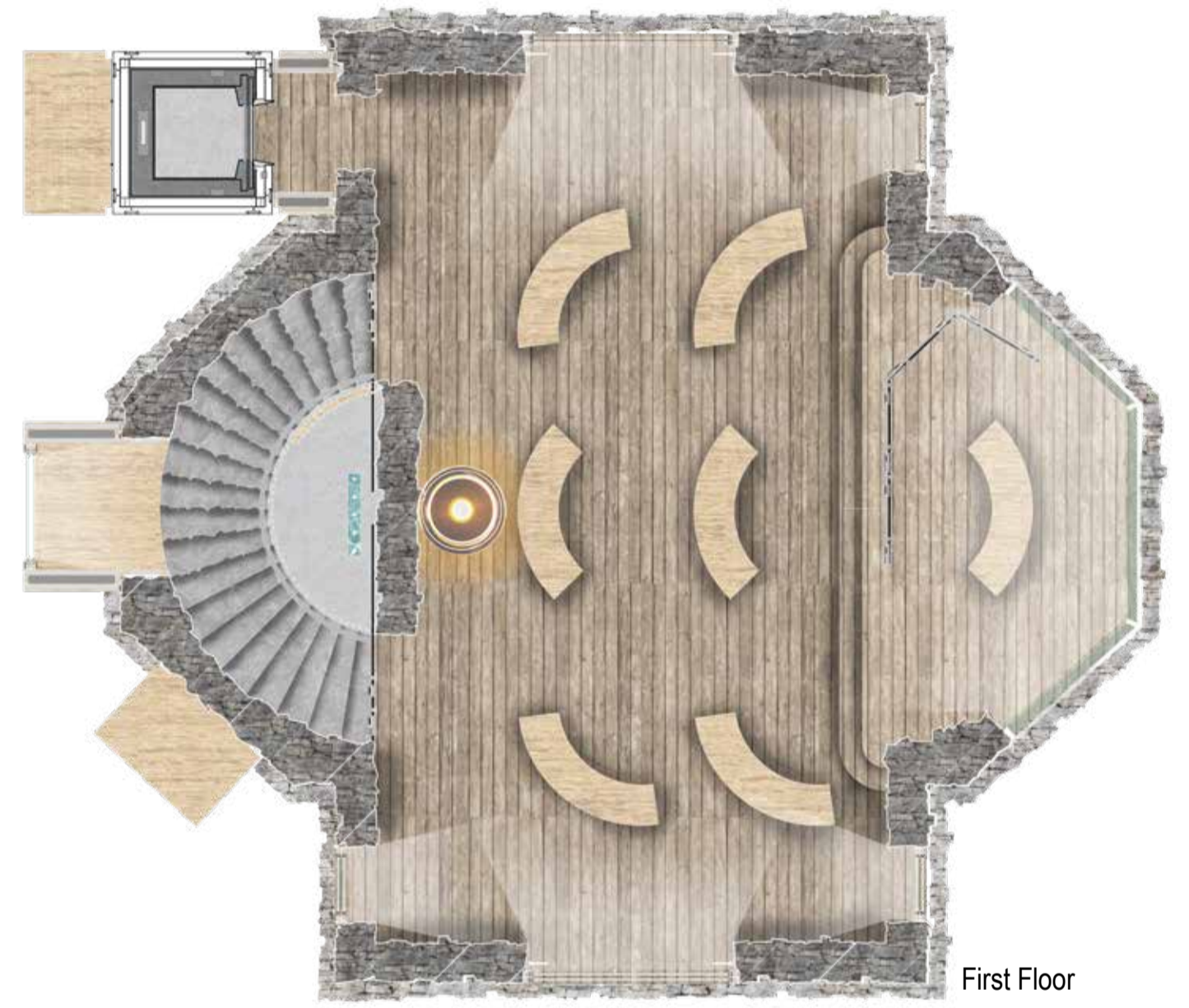
5 - Sight Pavilion



4 - Sound Pavilion: Lake



Second Floor



First Floor



Ground Floor

Building Plans

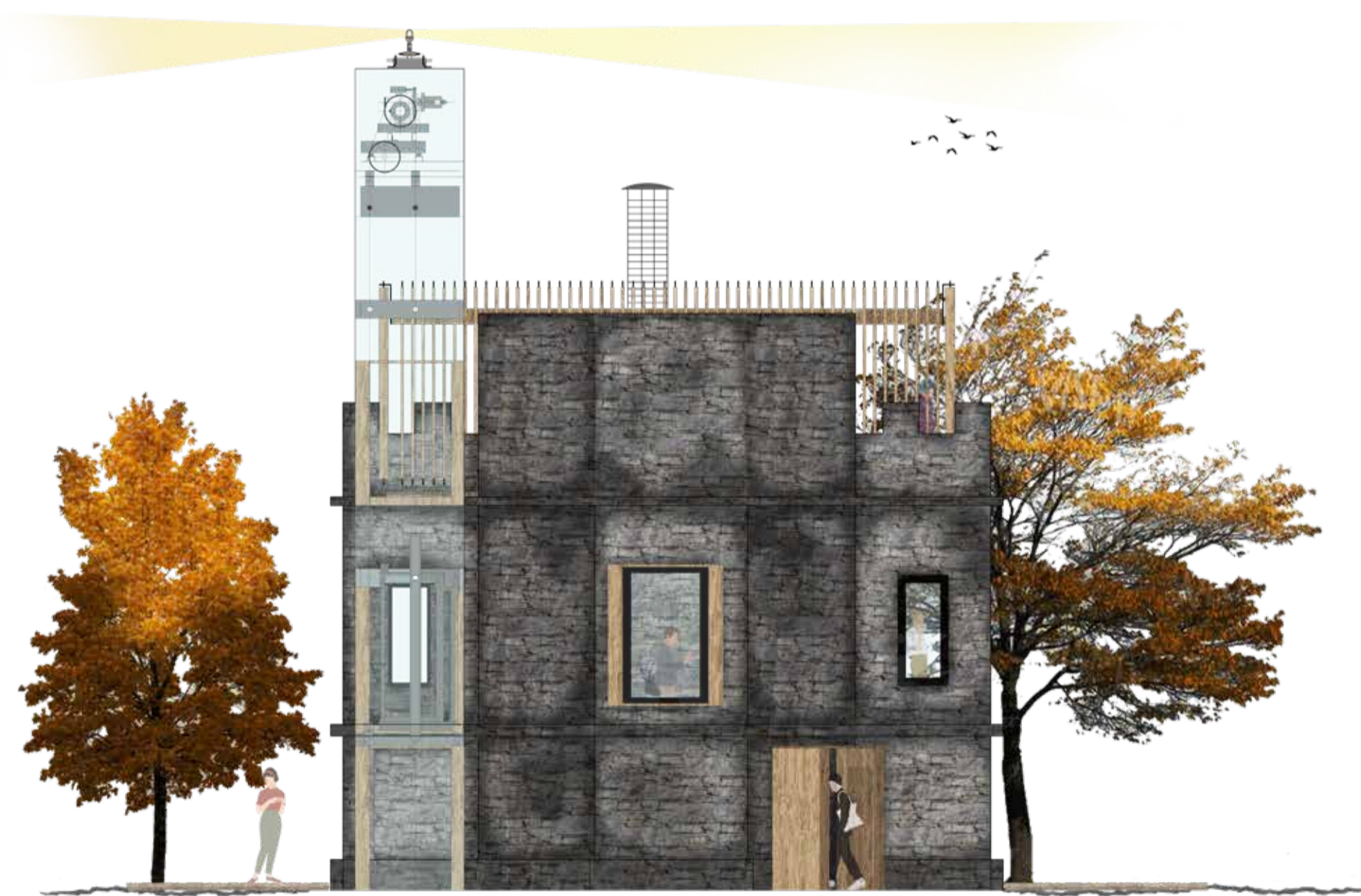


Section 1



Section 2

Building Sections



West Elevation



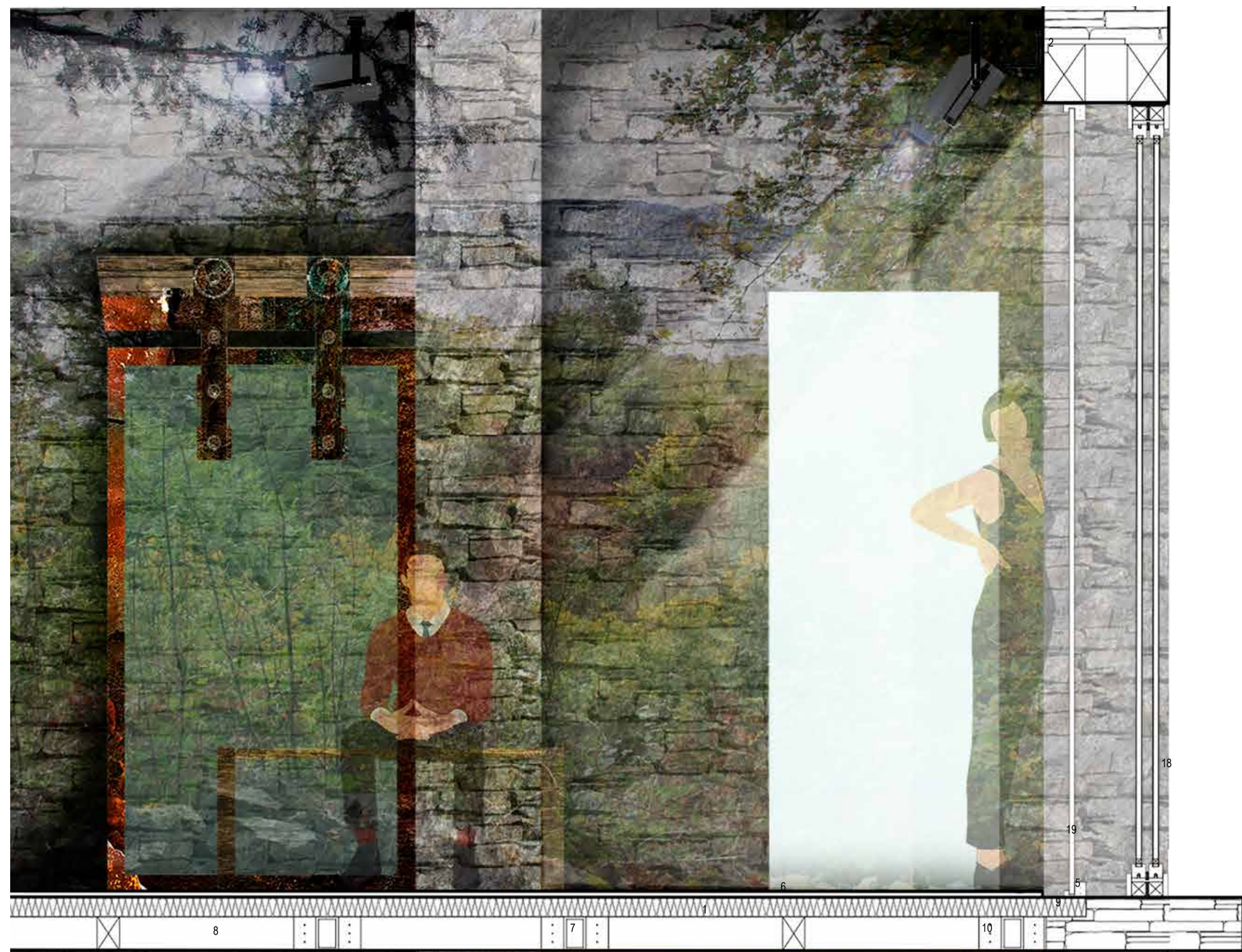
East Elevation

Building Elevations



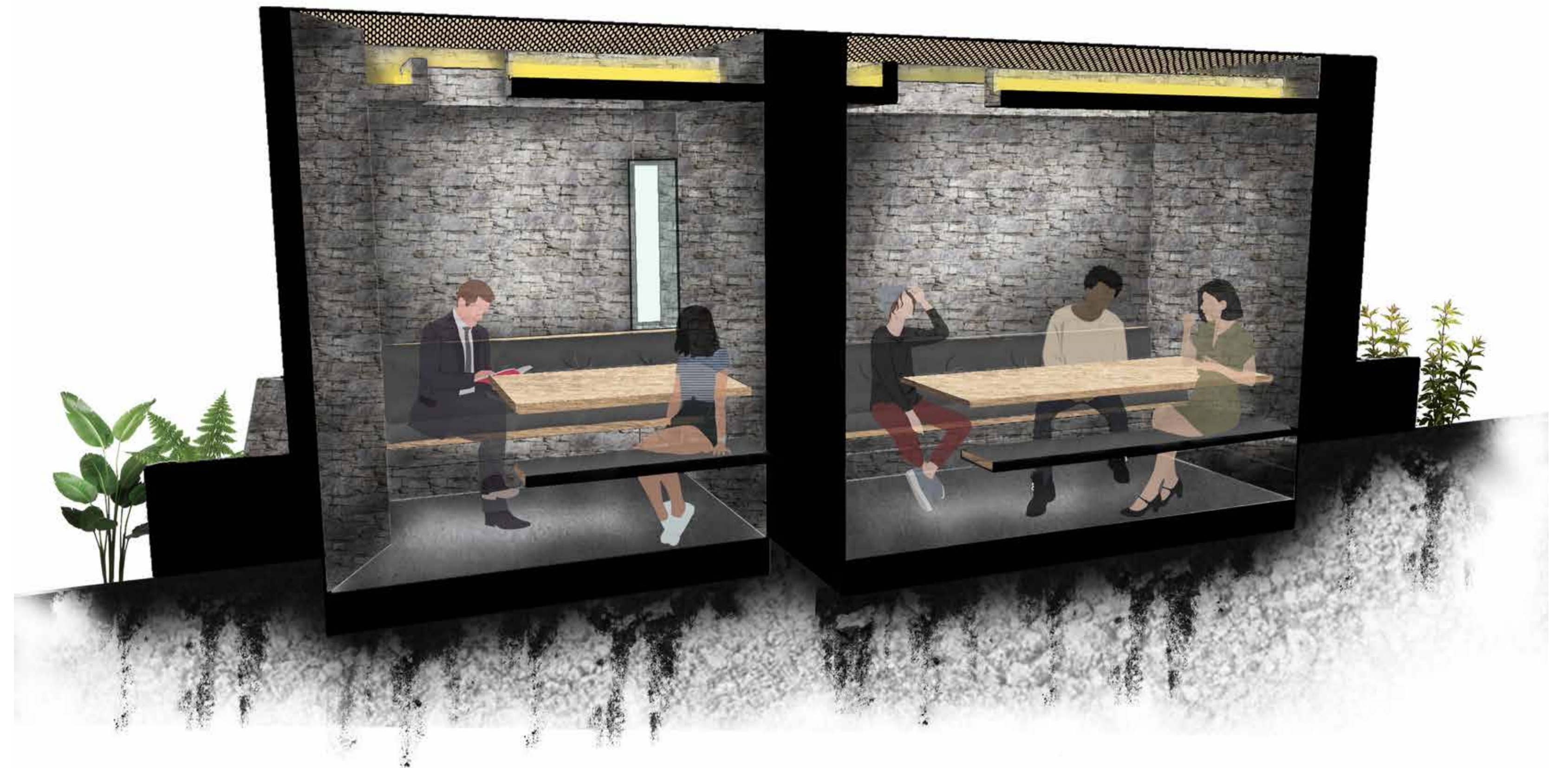
Section 3

Building 3D Section

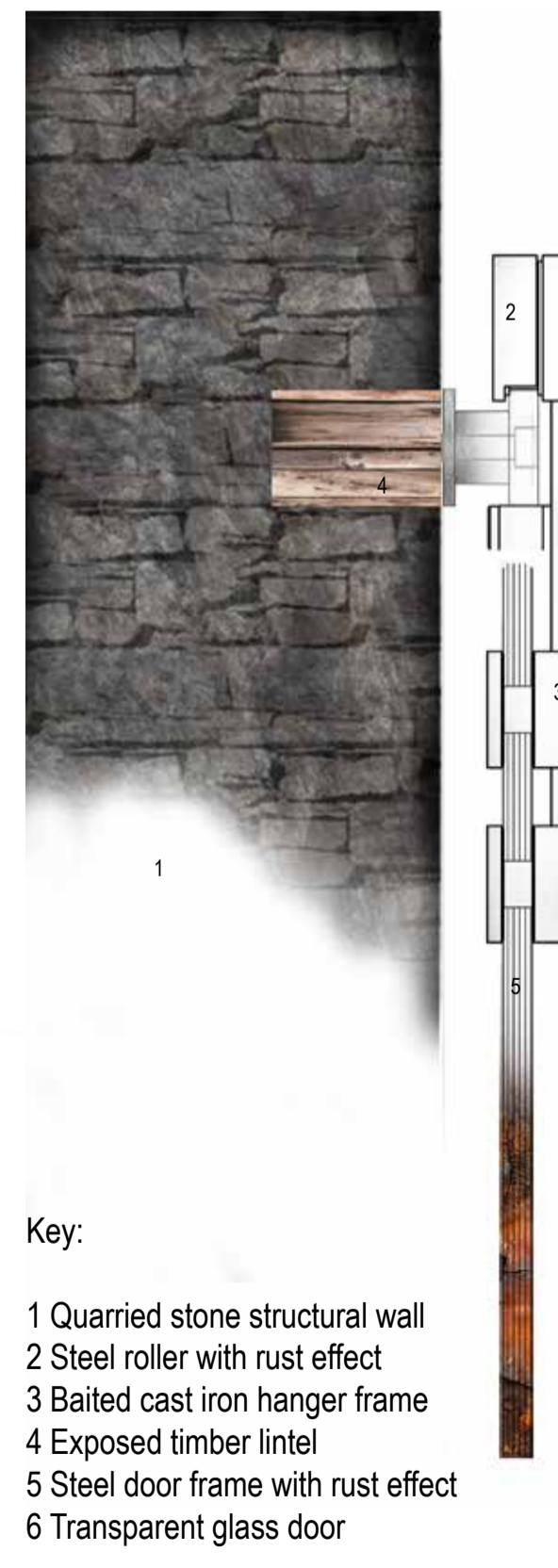


- Key:
- |                             |   |
|-----------------------------|---|
| 1 Insulation                | 11 Stone Masonry                                |
| 2 Led Flashing              | 12 Existing Footing                             |
| 3 Timber Lintel             | 13 Underpin - Concrete                          |
| 4 Ledger                    | 14 Stone Flags                                  |
| 5 Bracket                   | 15 Sand Blinding                                |
| 6 Wood Flooring             | 16 Cove Lighting                                |
| 7 Trimmer Joists            | 17 LED Lights                                   |
| 8 Primary Joist             | 18 Glazing                                      |
| 9 Structural Steel Beam     | 19 Single Glazed Steel Frame with Leaded Window |
| 10 Flange Plate with Screws |   |

Detail Drawings

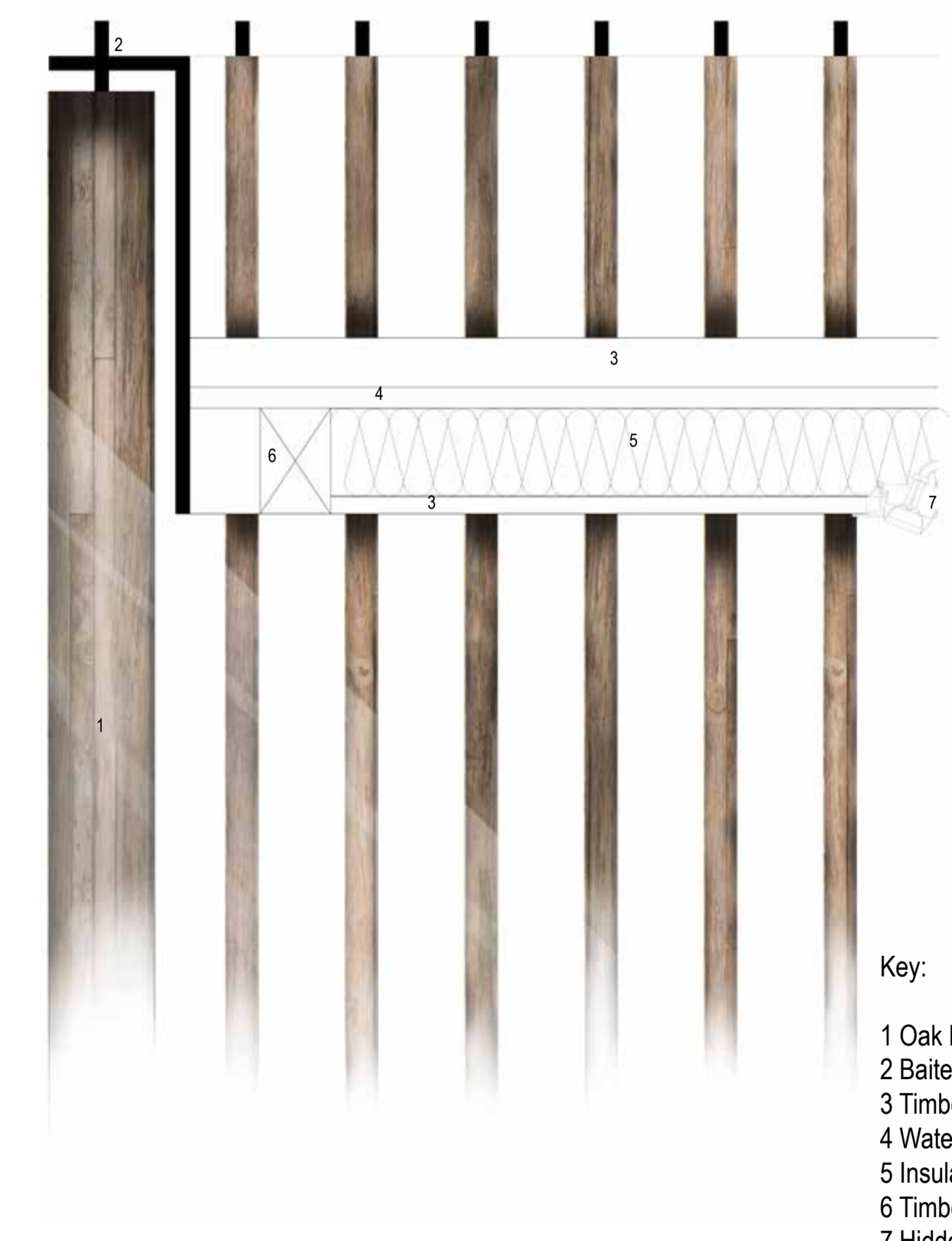
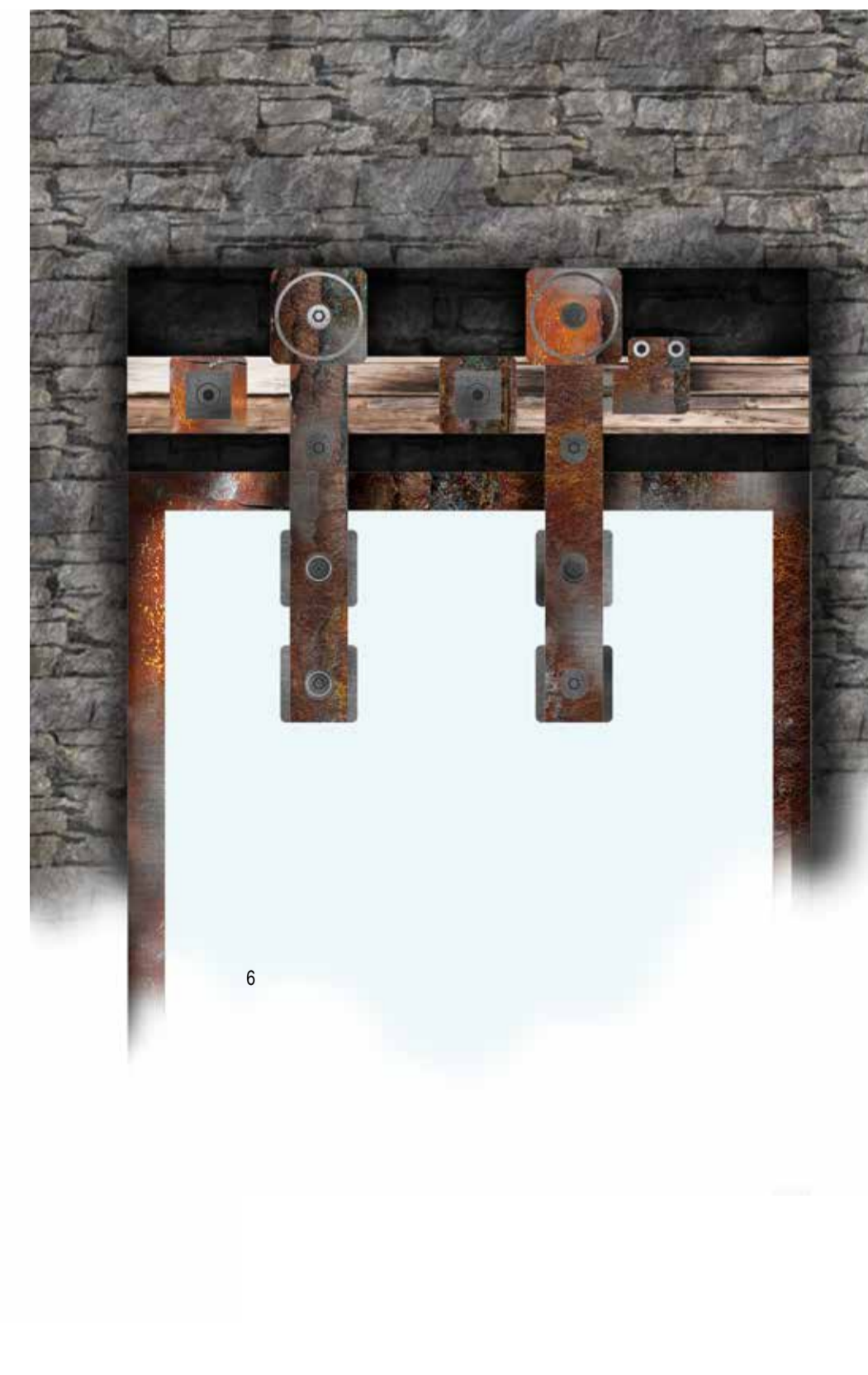


Concealment Review Sectional Visual



- Key:
- 1 Quarried stone structural wall
  - 2 Steel roller with rust effect
  - 3 Baited cast iron hanger frame
  - 4 Exposed timber lintel
  - 5 Steel door frame with rust effect
  - 6 Transparent glass door

Mechanical Track Sliding Doors



- Key:
- 1 Oak Louvres
  - 2 Baited cast iron pivot joint
  - 3 Timber cladding
  - 4 Waterproof Layer
  - 5 Insulation
  - 6 Timber beam
  - 7 Hidden spotlights within roof

Pivoting Oak Wood Louvres