

A Psychedelic Recovery

Site Research understanding the site, looking at opportunities and potential explorations and developments to implement.

Images from left to right:

Project Brief, Opportunities Diagram, Aerial photograph of Old Town Mill, site photographs

Old town Mill is part of the historic town of Hebden bridge, with an identity strongly connected to the hippies that moved into the area in the 1970s, It is a top tourist destination with beautiful scenery. The drug scene in Hebden is evident but rarely talked about. Therefore this project is going to try and tackle issues of addiction and mental health in Hebden and look at the future of recovery through a newly evolving research method.

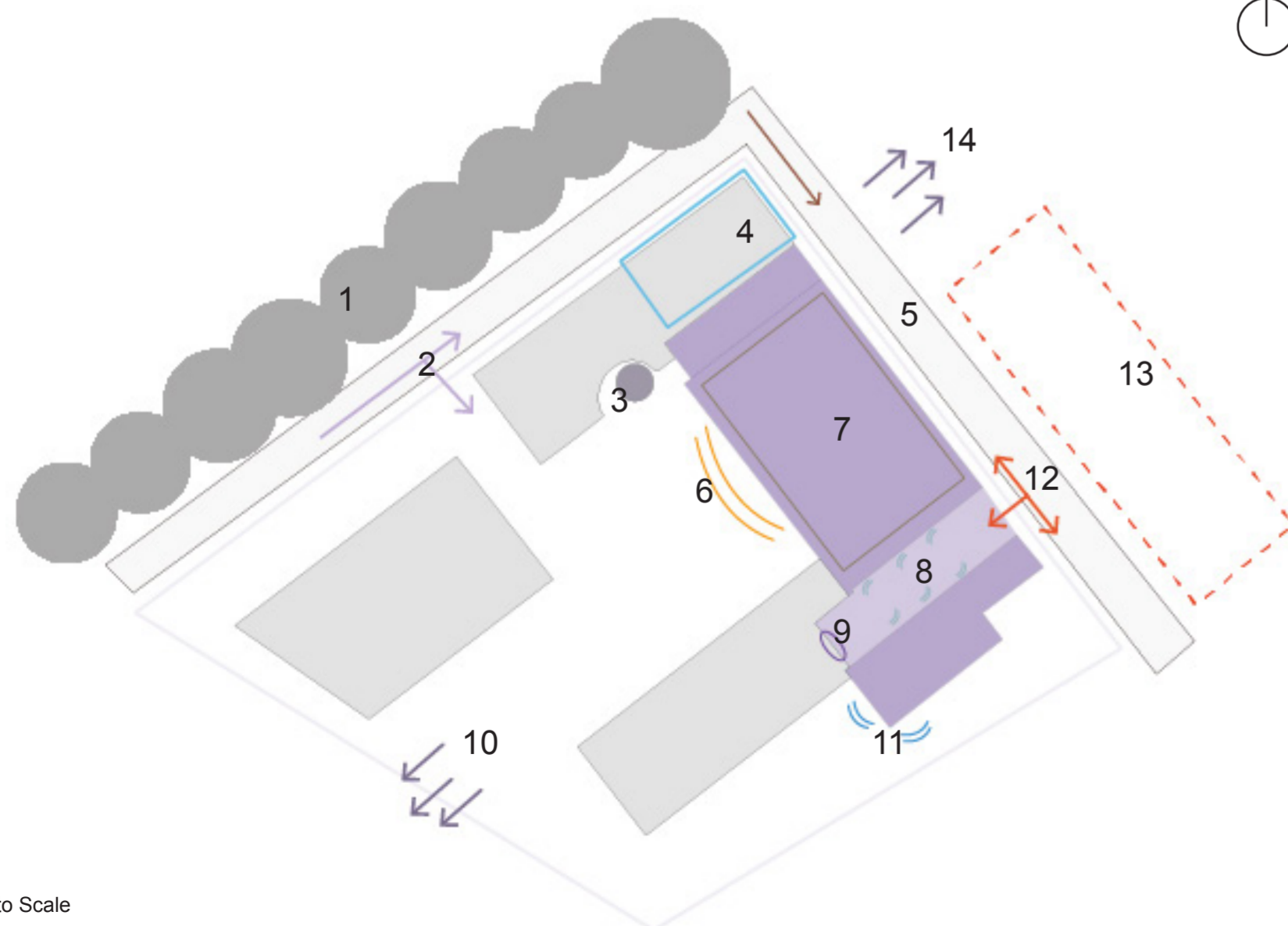
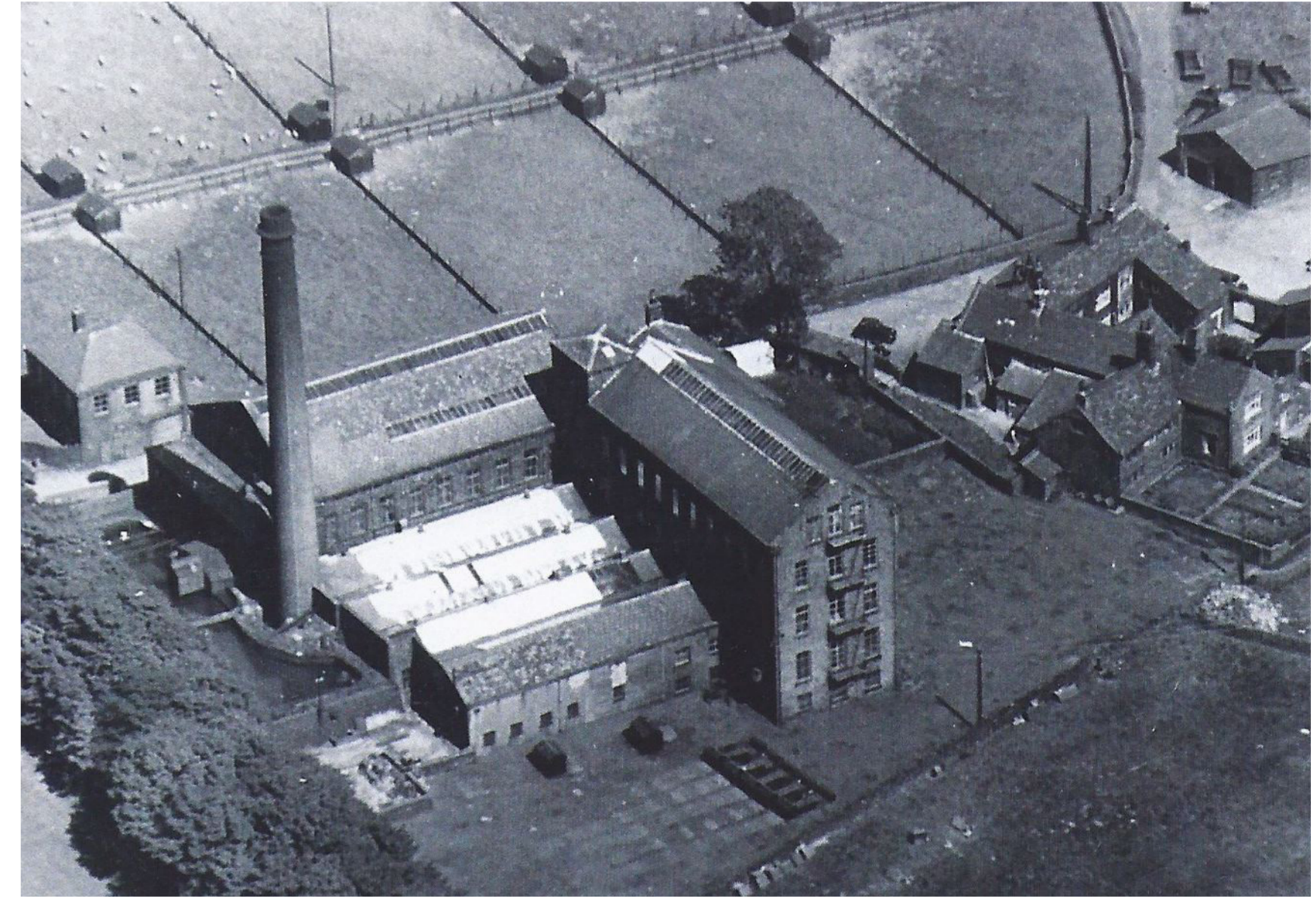
Old Town Mill will be regenerated into a research centre for propagation, cultivation and research on Psilocybin Mushrooms also known as magic mushrooms.

Portugal has legalised drugs since 2001 and since then the rate of drug consumption and addiction has decreased This research centre will push to help in the legalisation of a drug that has been overlooked and is deemed illegal rather than beneficial. It is believed that Psilocybin mushrooms could play a part in treatment of addiction, and several mental health issues such as depression and anxiety.

The research centre will be a centre for clinical trials that allows for controlled consumption and micro dosing of Psilocybin mushrooms.

The building will have a research space to conduct chemical researches on Psilocybin mushrooms, a cultivation space, communication space to educate the public about the new findings as well as therapy rooms for safe drug consumption and an exhibition space to allow for the display of on going research. The concept of this project is disorientation and clarity.

When mushrooms are consumed they create extra connections between the brain parts leading to a more clear train of thought. The journey through the space will mimic that feeling.



Opportunities:

1. Landscape Screen for privacy
2. Cycle route and potential additional car access
3. Chimney Landmark seen from afar
4. Water connection to existing reservoir
5. Access to wagons and cars around site
6. Outdoor Space opportunity for extensions
7. Large Space with high ceiling, can occupy several activities
8. Sheltered courtyard
9. One window overlooking courtyard allowing privacy in courtyard
10. Views down to hebden help with healing and recovery
11. South window allowing for a lot of light and celebration of views
12. Multiple access can be integrated, reopening doors that were closed off
13. Potential Outdoor space for extra parking for guests to use



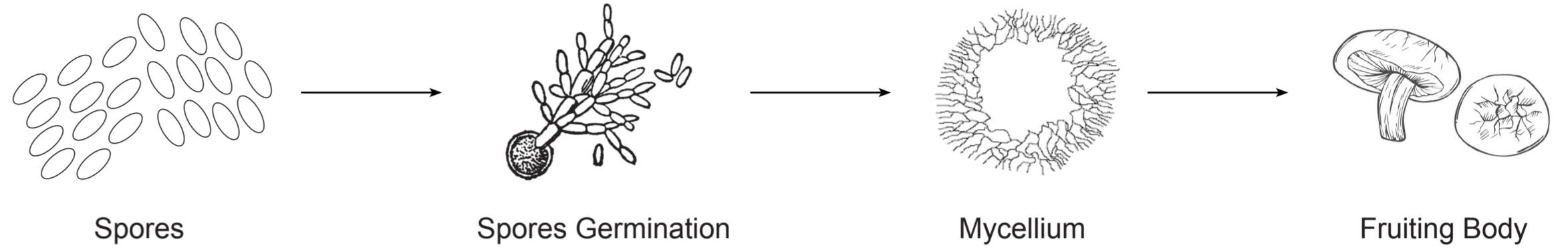
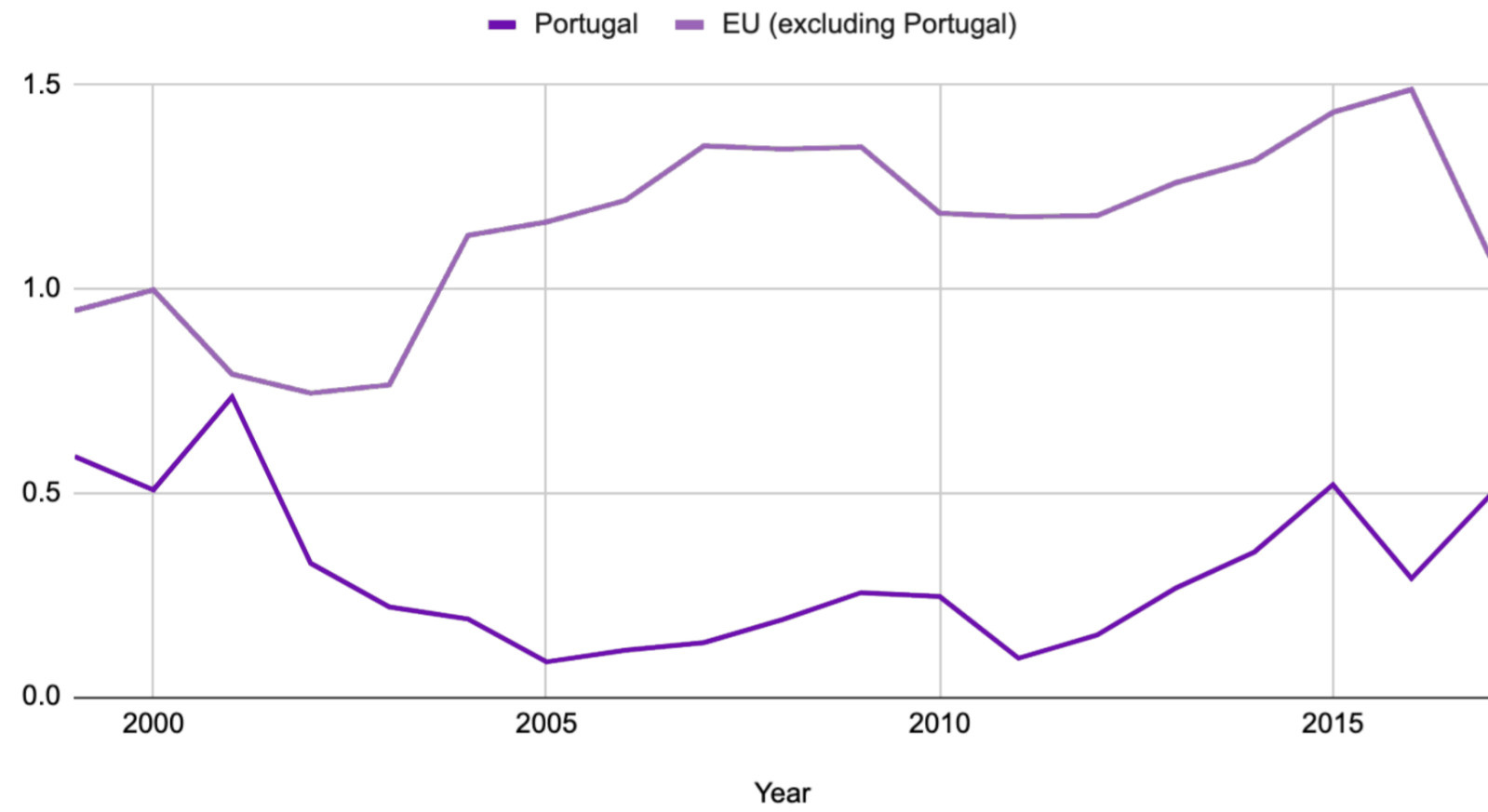
Brief Research

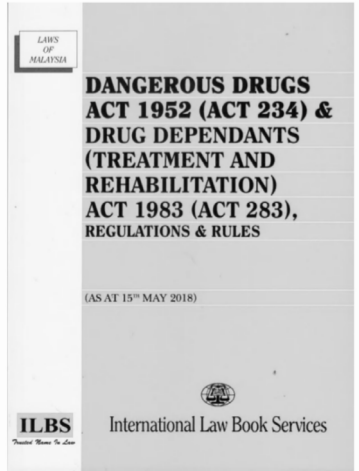


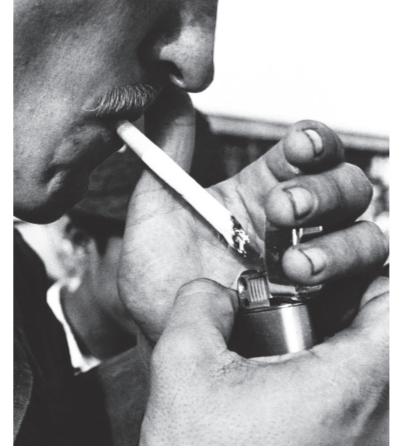


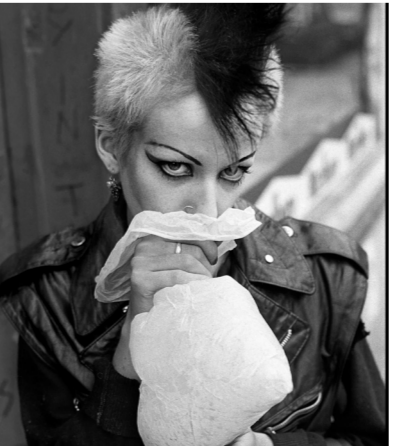
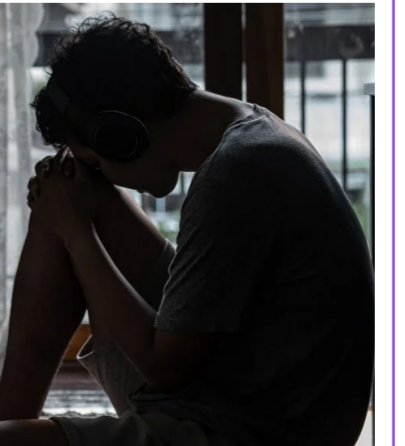


Researching into Psilocybin mushrooms and how they grow. Looking at the benefits of legalising drugs in Portugal and history of drug culture around the world and how people use drugs as a way to escape reality rather than a way to heal.

Images from left to right:

Line diagram showing statistics of legalising drugs and number of deaths, timeline to show the drug culture, process and stages of mushroom growing.

DRUG DEATHS PER 100,000 POPULATION (NOT AGE ADJUSTED)
Data: EMCDDA, Eurostat (2020)¹²



<p>1954</p> <p>Dangerous drugs office was set up (Drugwise, 2014)</p> 	<p>1960</p> <p>At the time the main drug control legislation force was the dangerous drug act 1951. The first heroin drug addict appears (Drugwise, 2014)</p> 	<p>1963</p> <p>A number of doctors were overprescribing to addicts and the surplus is being sold (Drugwise, 2014)</p> 	<p>1964</p> <p>New offence of permitting premises to be used for smoking Cannabis. unauthorised possession of Amphetamine was banned (Drugwise, 2014)</p> 	<p>1967</p> <p>Police were given rights to detain and search anyone suspected of having drugs (Drugwise, 2014)</p> 	<p>1978</p> <p>Heroin was stored in car tyres. first smokeable heroin from the Middle East made an impact on UK Drug Scene (Drugwise, 2014)</p> 	<p>1980</p> <p>Widespread use of solvents started (glue sniffing) (Drugwise, 2014)</p> 	<p>1984</p> <p>Research has concluded that drug misuse can be reduced by looking at social and cultural facts (Drugwise, 2014)</p> 	<p>1985</p> <p>First prosecution of shopkeeper selling drugs. Problem attacked by trying to reduce supply from abroad, and improving treatment and rehabilitation (Drugwise, 2014)</p> 	<p>1994</p> <p>Vigorous law enforcement towards drugs took place to increase safety of communities and drug related crime (Drugwise, 2014)</p> 
--	---	---	--	--	---	--	--	--	--

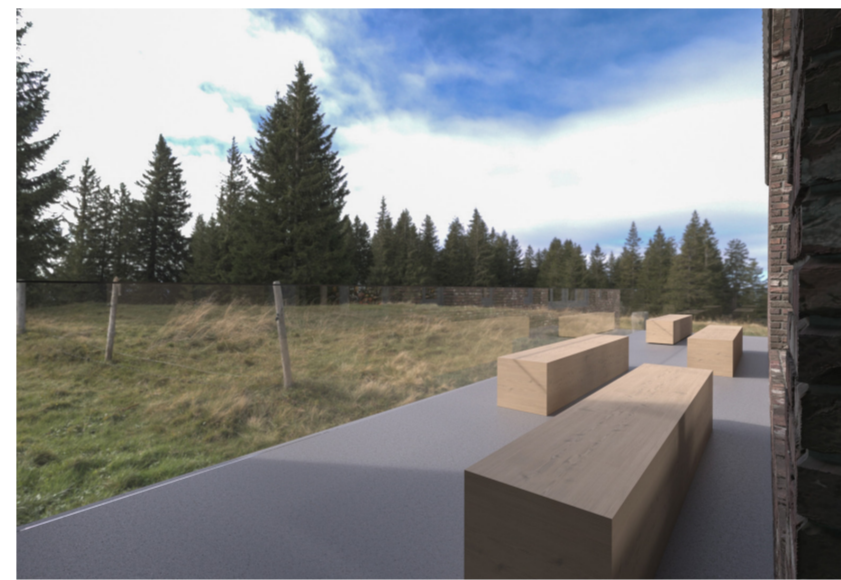
Disorientation to Clarity

Journey through the Space

Designing a space to provide a journey from disorientation to clarity. This will be achieved by controlling light in spaces, creating openings and restricting movement in the space

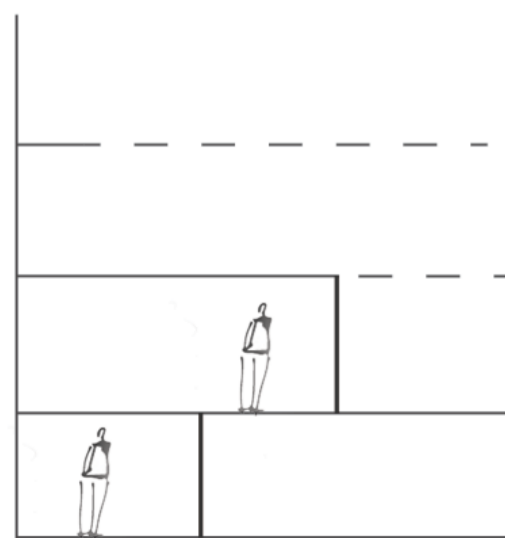
Images from left to right:

Triple height space at entrance, long narrow corridor, mushroom pods, restricted viewing wall, disorientation staircase, exhibition view 1, exhibition view 2, outdoor terrace, research lab, Psilocybin mushroom pods



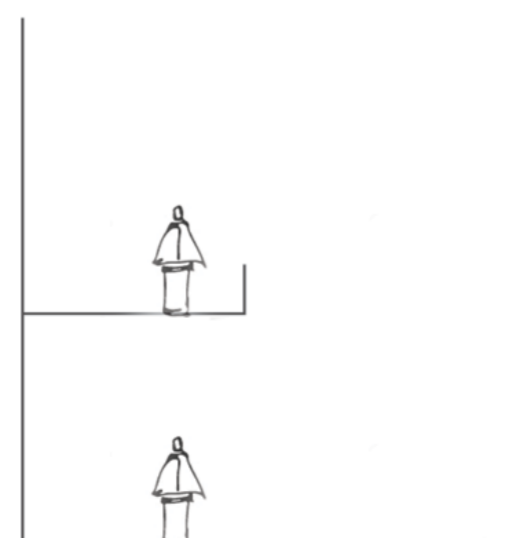
Restricting Movement

Looking at restricting views, spaces becoming more visible and accessible as you progress through the building



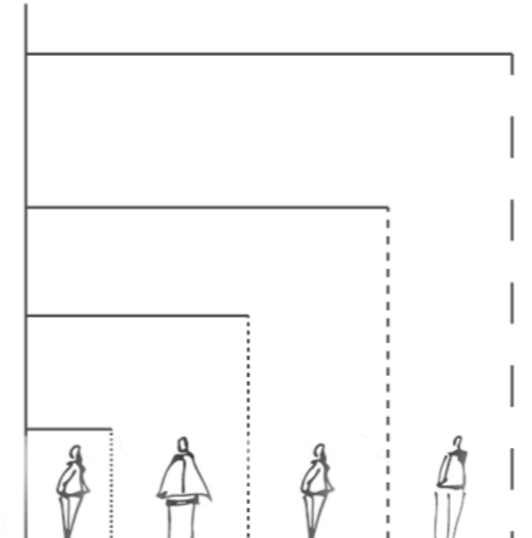
Connecting Spaces

Looking at spaces that overlook other spaces to create connections between different parts of the building



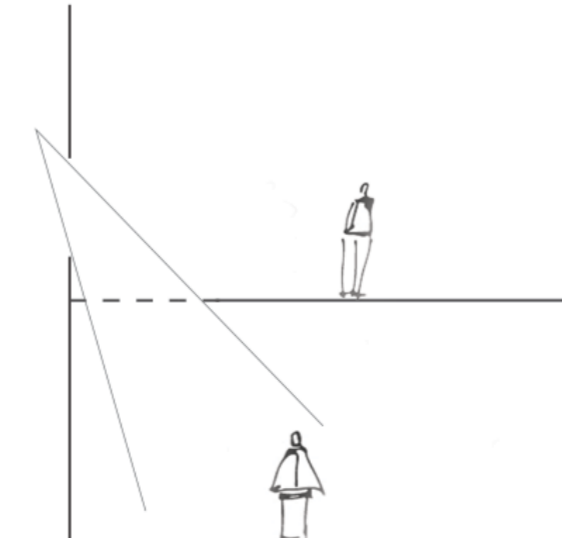
Restricting Views

Exploring dark and light spaces, increased opening to allow for more visibility as you progress



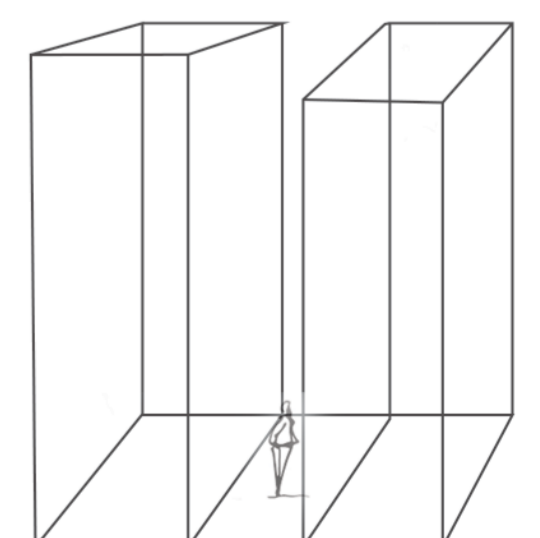
Controlling Light

Opening in the Floor to allow access to more light to different spaces



Changing Heights

Triple height spaces to create an a disorientated feel

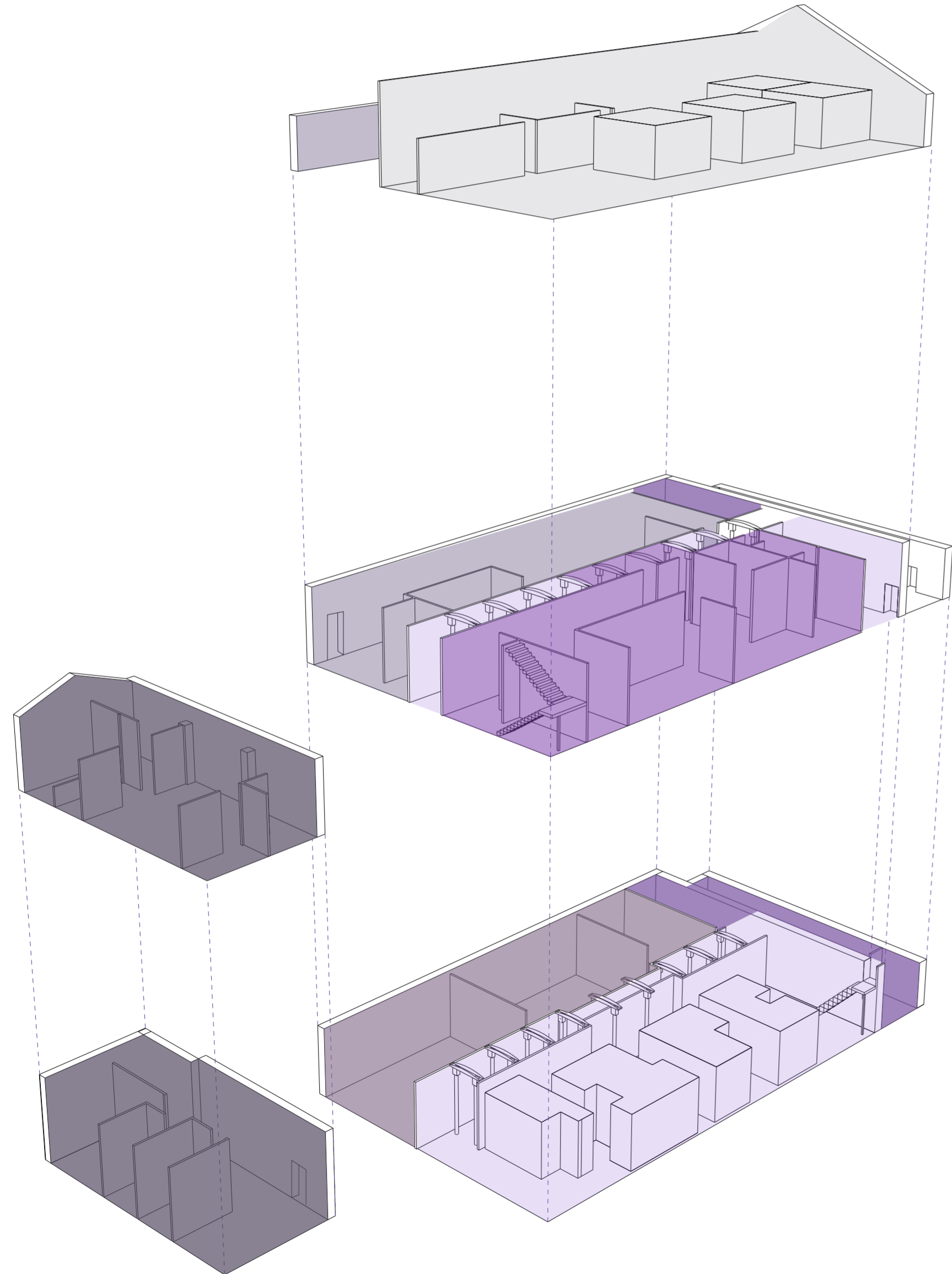


Program

Showing the relationship between different spaces within the building and the different programmes.


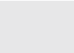





Images from left to right:

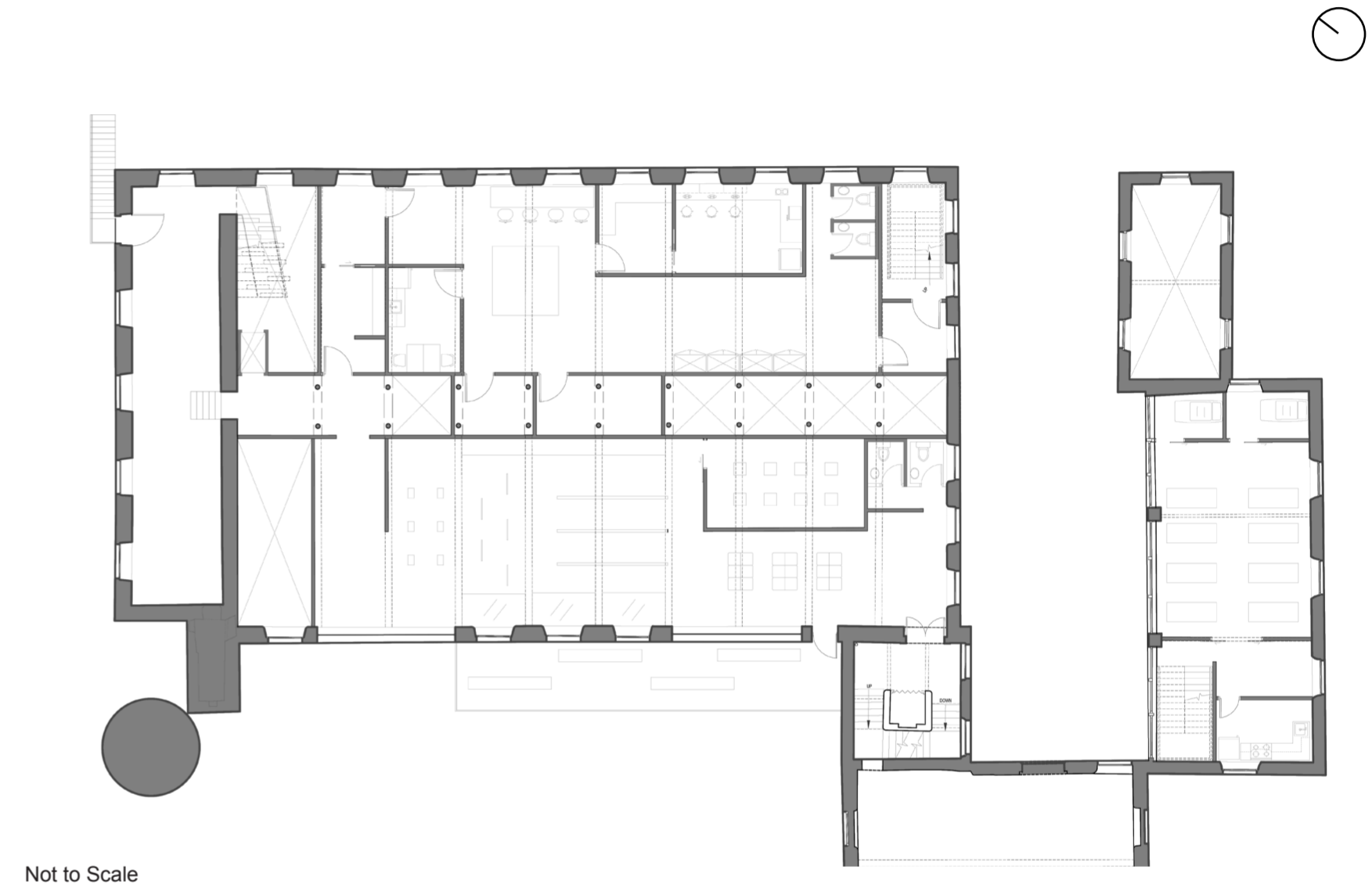
Axonometric Programme diagram, Ground floor plan, first floor plan



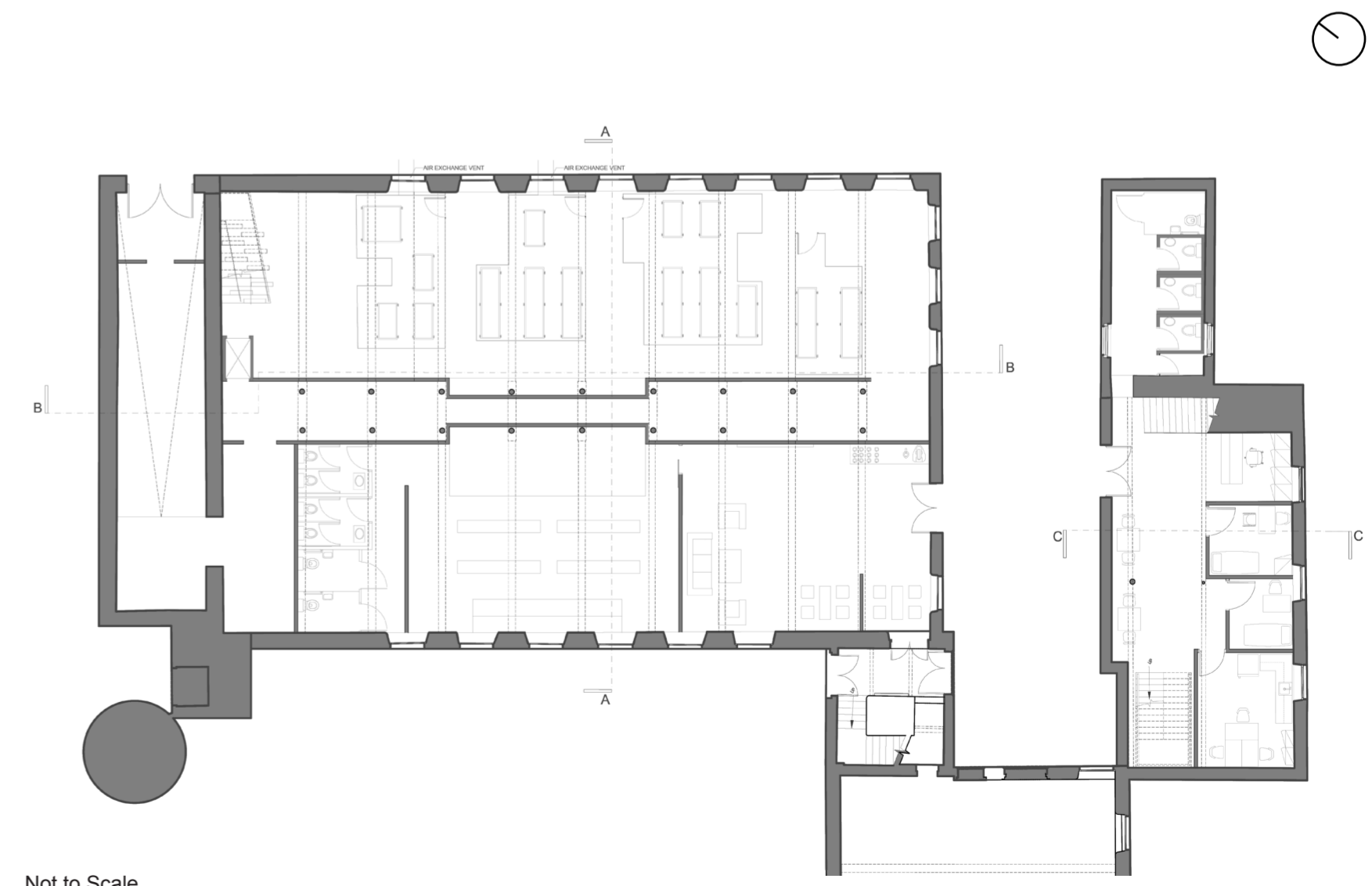
Not to Scale

Key:

-  Clinical Trials
-  Psilocybin Mushroom Pods
-  Research Lab
-  Exhibition Space
-  Teaching/Event Space
-  Mushroom Growing Pods
-  Entrance



Not to Scale



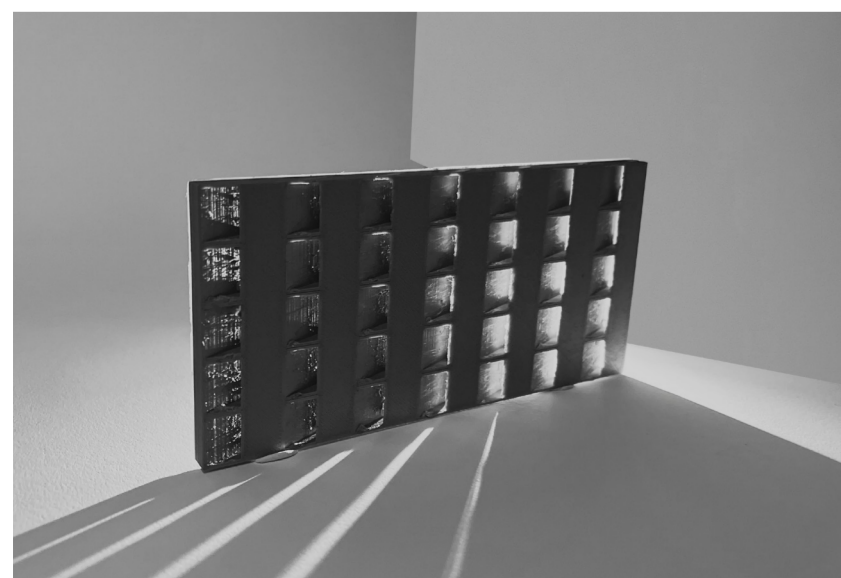
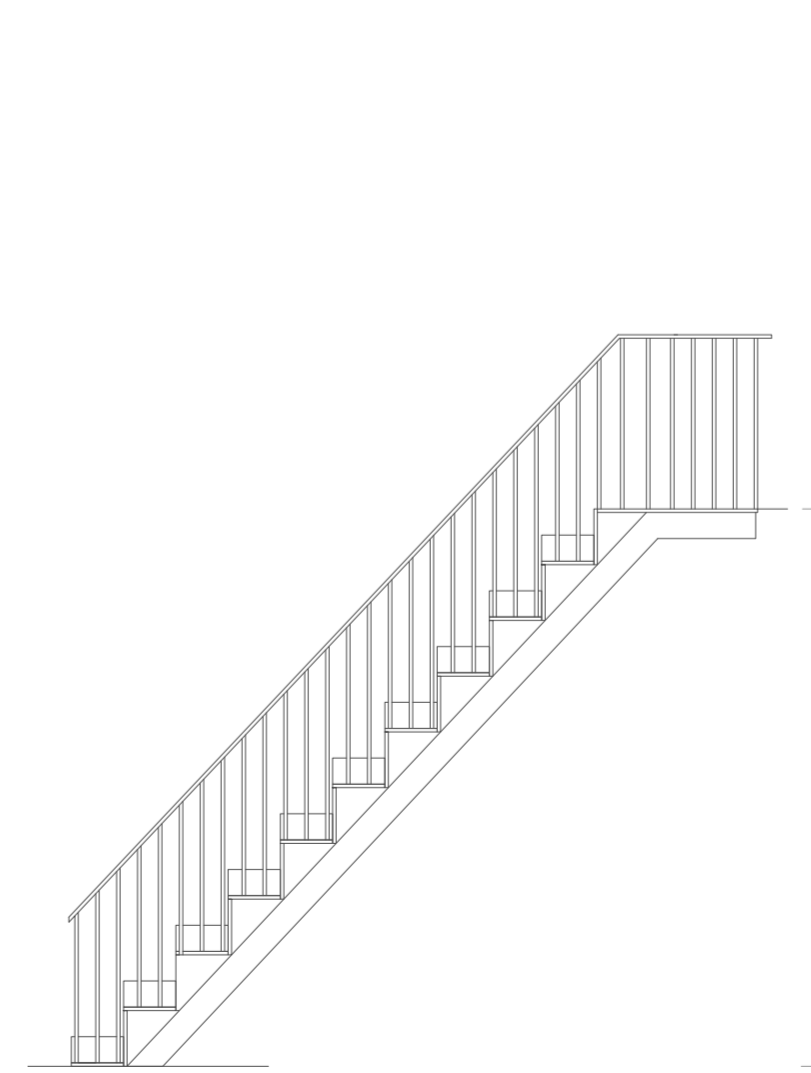
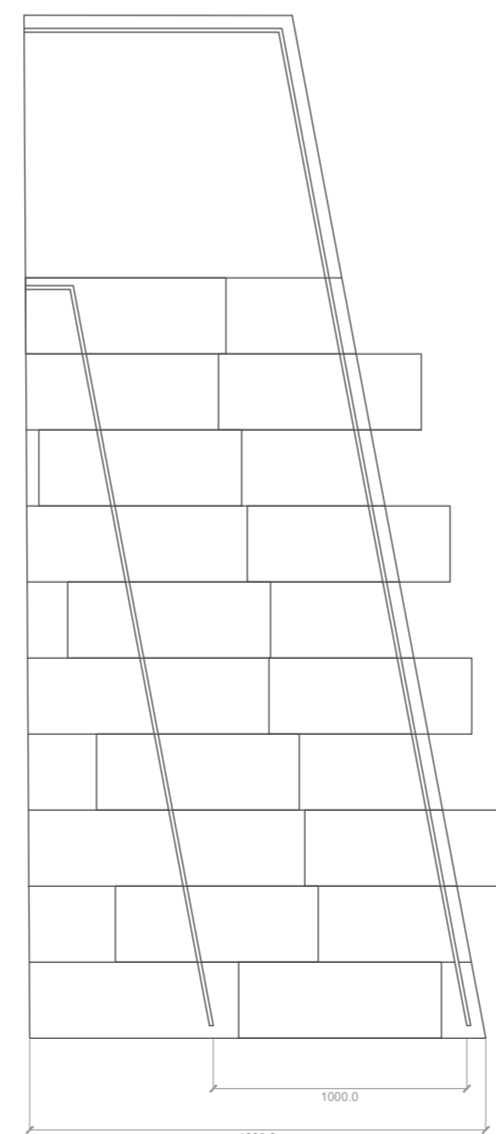
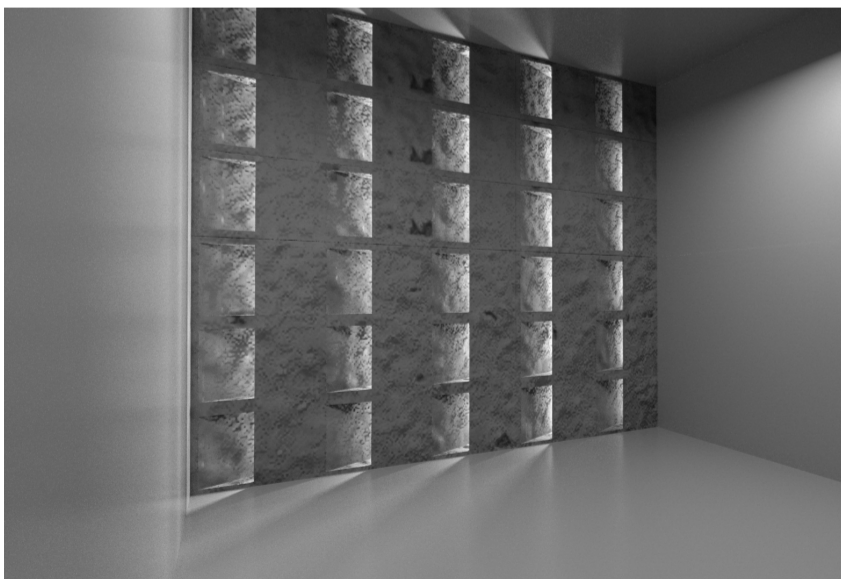
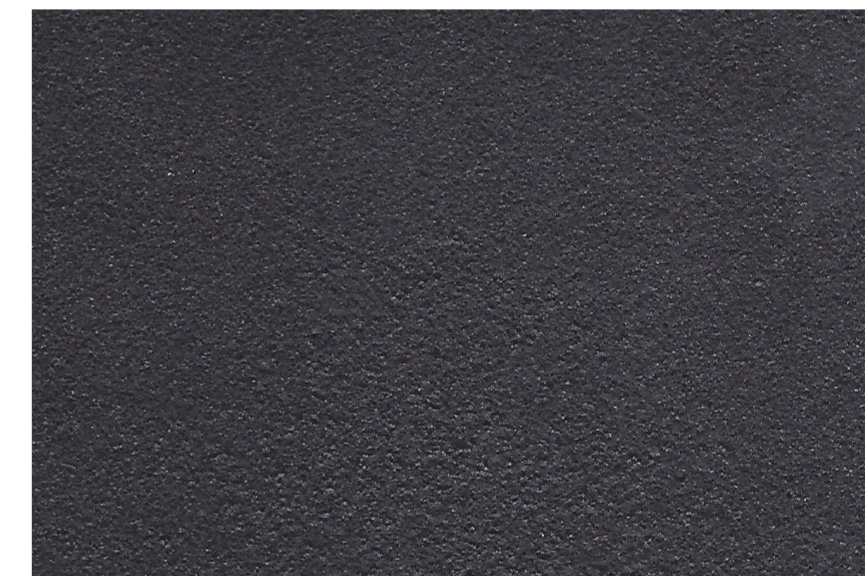
Not to Scale

Detail Component

Designing a wall that restricts view looking back, and a staircase that controls movement as you go up using offset steps. The handrail detail combines a soft to create a contrasting feel to the steps, reflecting the concept of disorientation.

Images from left to right:

Viewing wall visual in space, viewing wall visual with light, 3D printed model of wall detail, precedent for mycelium brick, close up of mycelium brick material, staircase visual with offset steps, staircase detail drawing, handrail material mycelium leather, stainless steel material, 1:1 Model of Handrail detail



Not to Scale