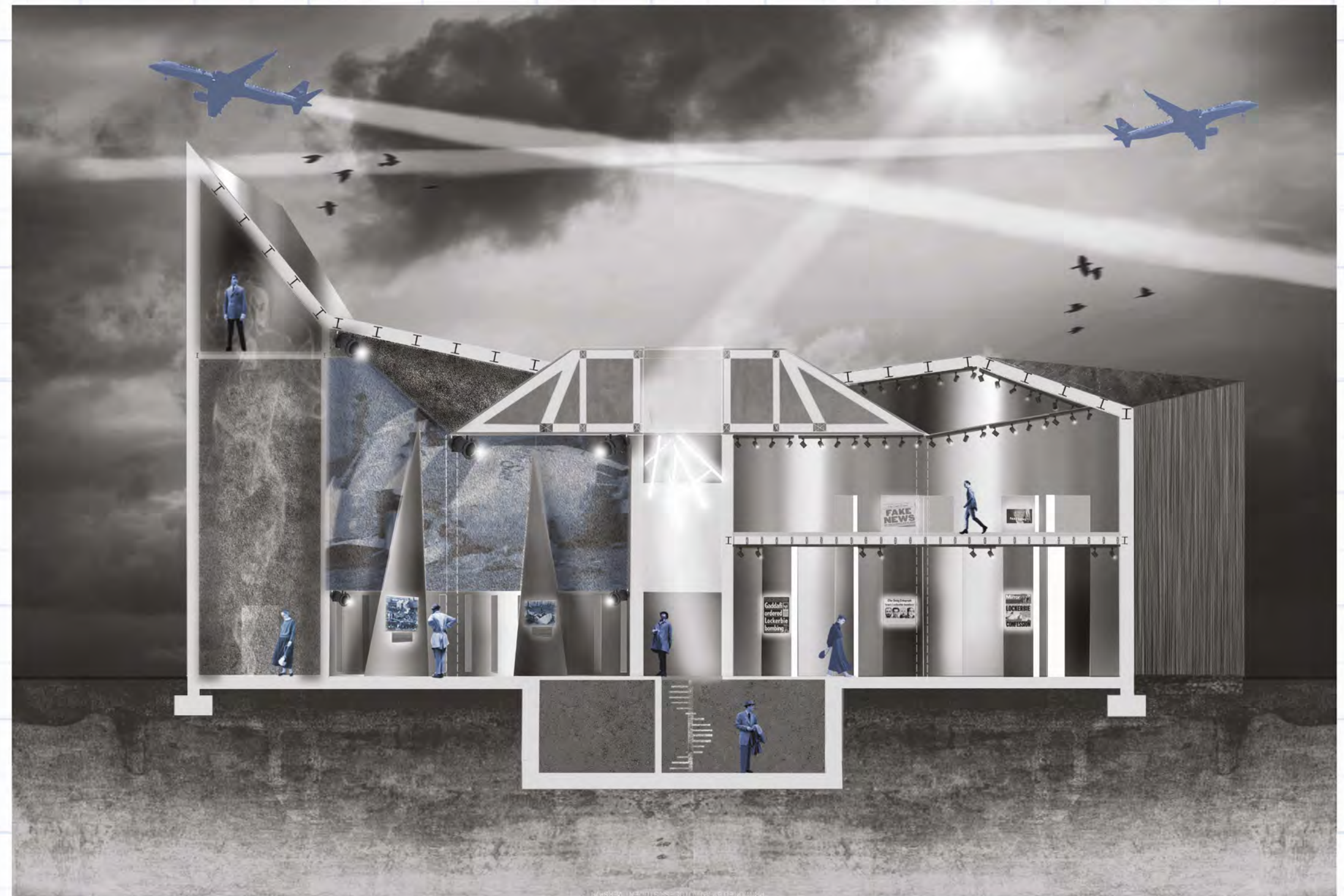
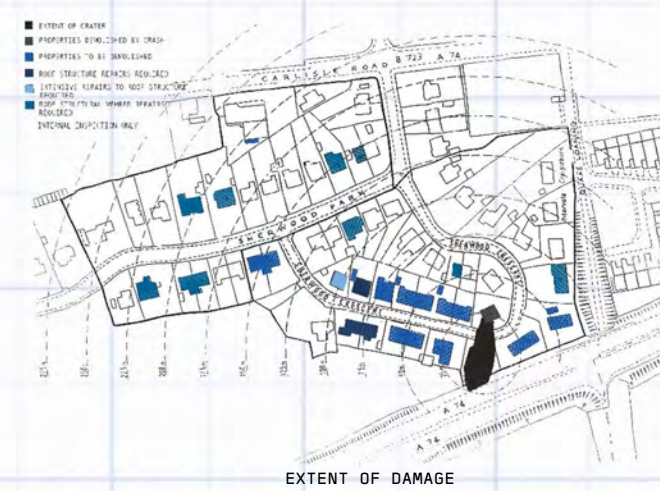
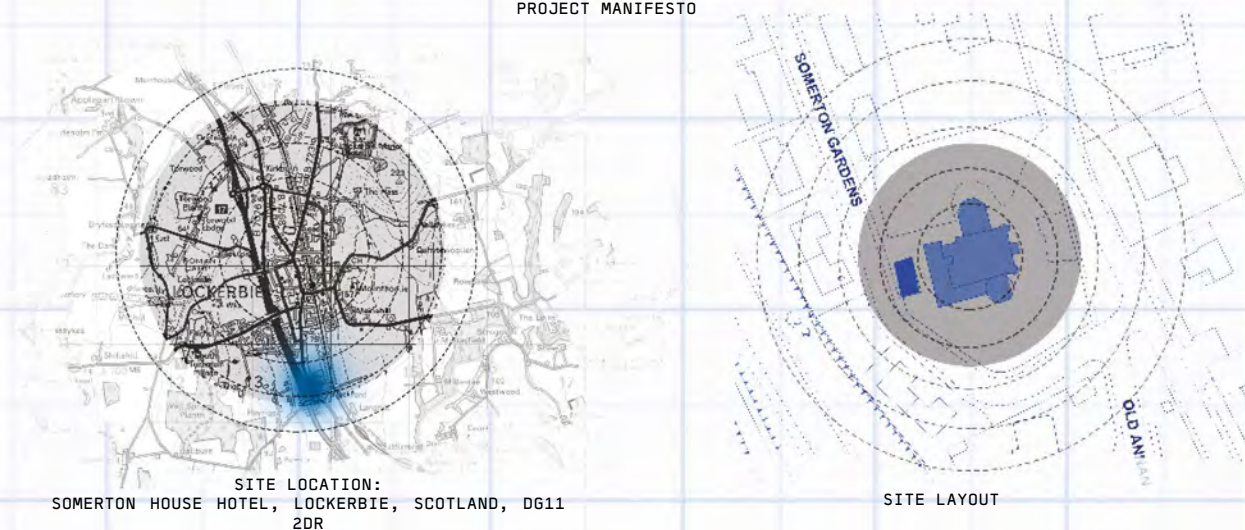
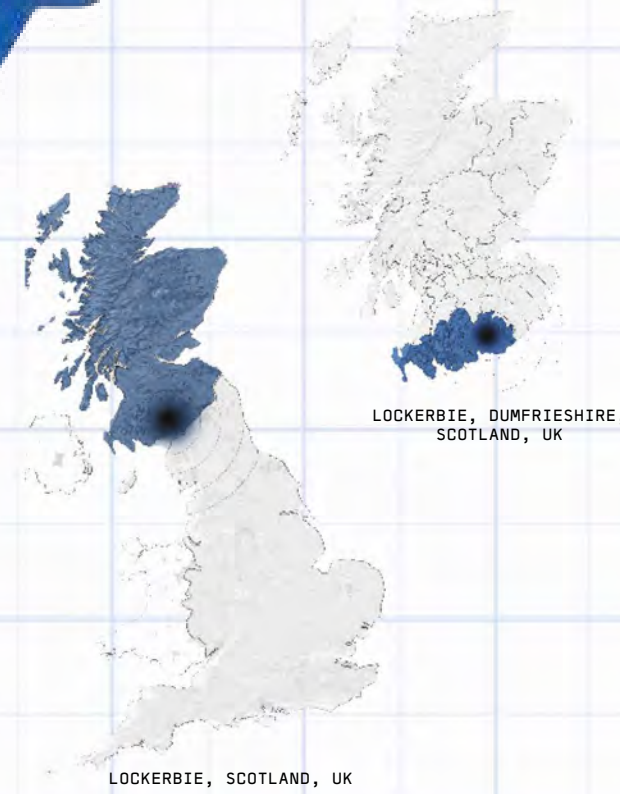


THE BLACK BOX



KEY VISUAL

This project explores a search for 'the truth' and the moral and political dilemma of 'fake news'.

On 21st of December 2020, exactly 32 years after the Lockerbie Bombing Disaster, the alleged bomb-maker was finally charged for terrorism related crimes. This is a disaster that shook so many lives and has been riddled with fake news and misinformation.

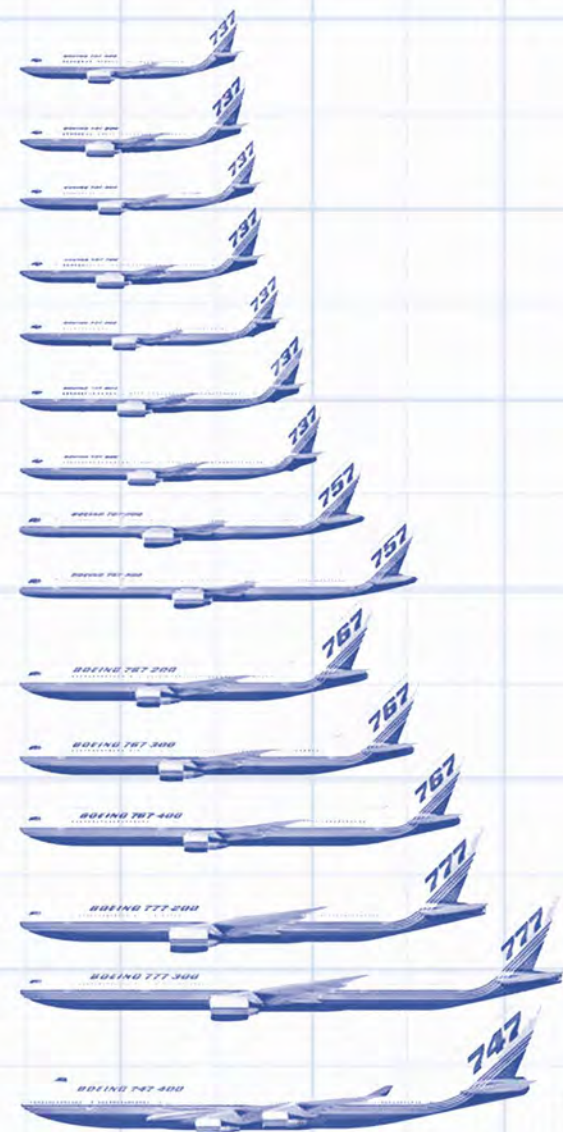
(Mis)information, political agendas, historic reporting through media news outlets and modern social media platforms are complicit within the unfolding of this particular story, but instances of 'fake news' have become more prevalent. From recent federal and HM governments to presidents and prime ministers alike, the public trust barometer is at an all-time low with an astonishing percentage of the public happy to accept that their politicians lie and the media lack accountability for what is reported.

The choice of building, Somerton House Hotel, specifically references the qualities that domestic architecture, and a building which is locally embraced can provide to create a memorial that the community can identify with.

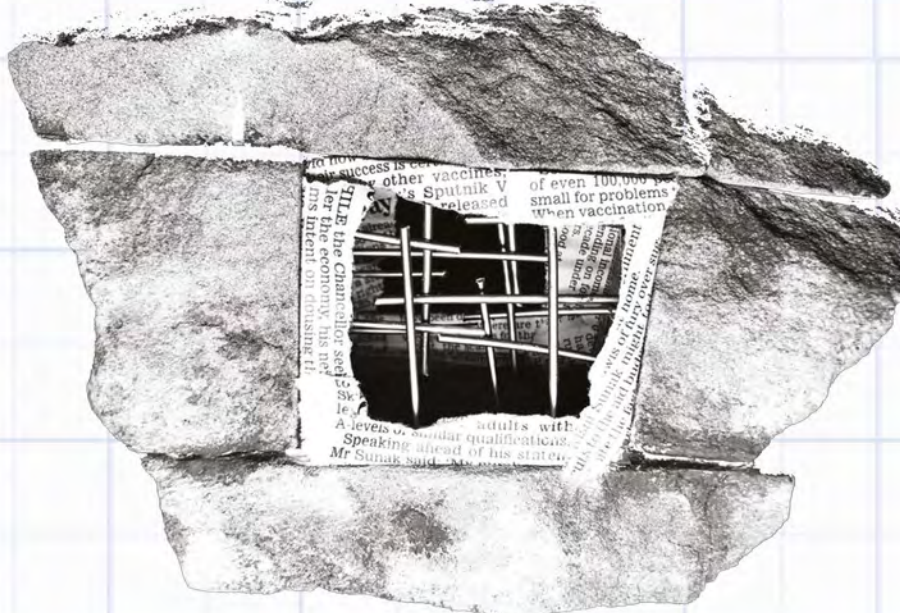
This project 'The Black Box' seeks to develop an exhibition, memorial and museum facility, enabling visitors to understand the 'known facts' about the disaster alongside misreporting and fake news.

WITHIN THE AIRCRAFT

- TAKE OFF – an atrium space accomadating the reception area.
- THE COCKPIT – a large exhibition space focussing on infomation about the Lockerbie Disaster.
- THE BLACK BOX – a confined space revealing the truth behind the Lockerbie Disaster.
- THE CABIN – a disorientated space focussing on fake news behind the Lockerbie Disaster
- THE TURBINE – open maze on fake news today
- THE DESCENT – exterior tunnel space on how slow news combats fake news

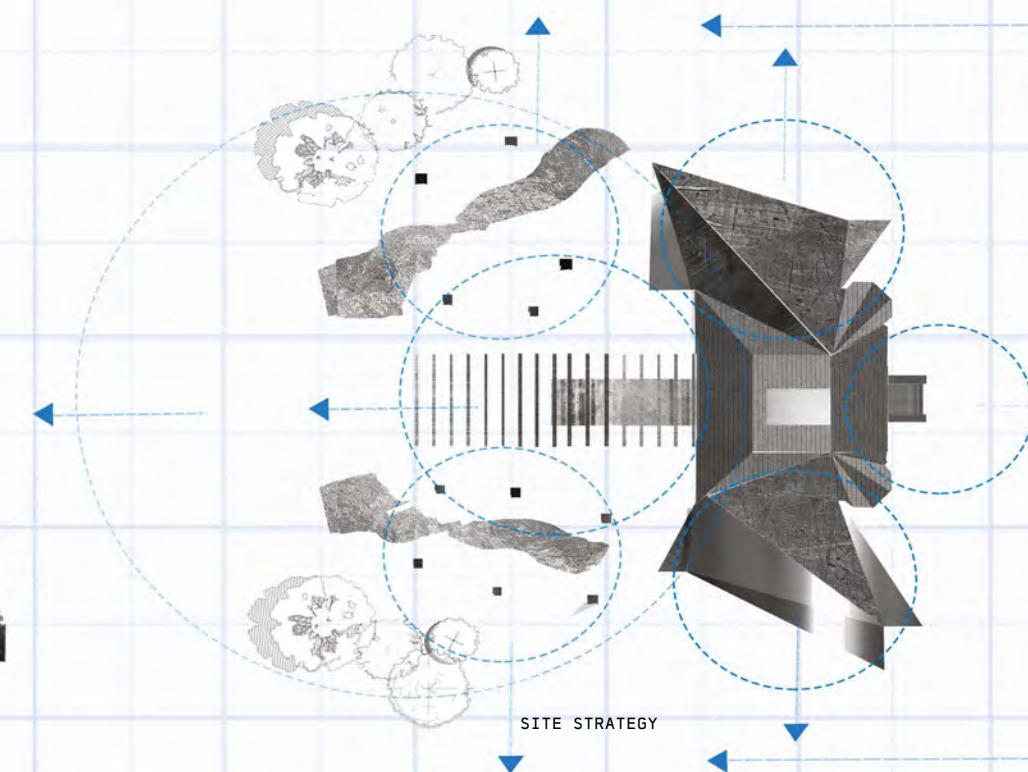


LIES BETWEEN THE SANDSTONE

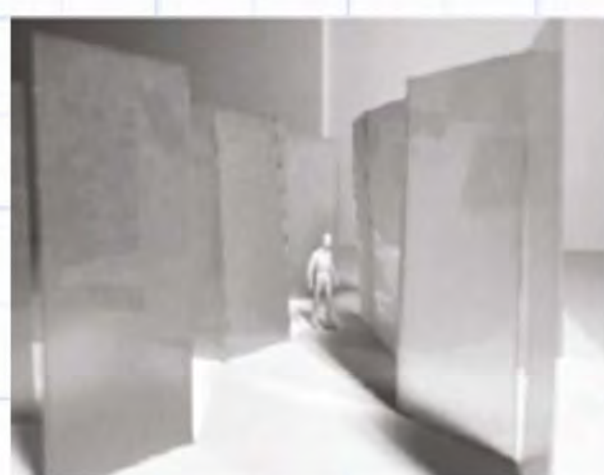
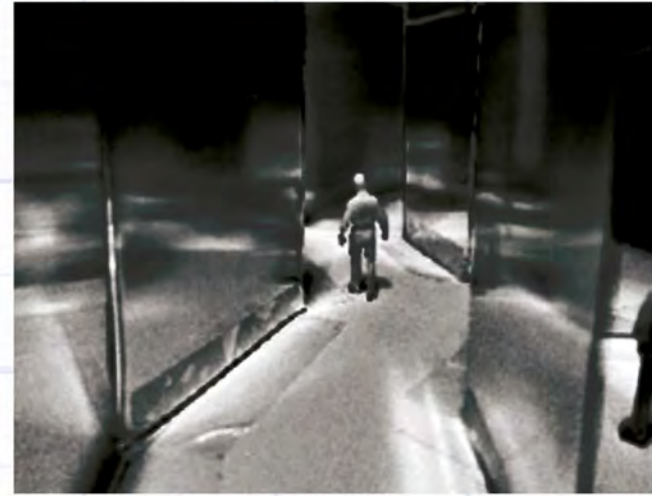


Journalists and detectives used the hotel's accomodation during the Lockerbie Disaster. They were being fed misinformation from media outlets and those in power

SPIRIT OF SOMERTON



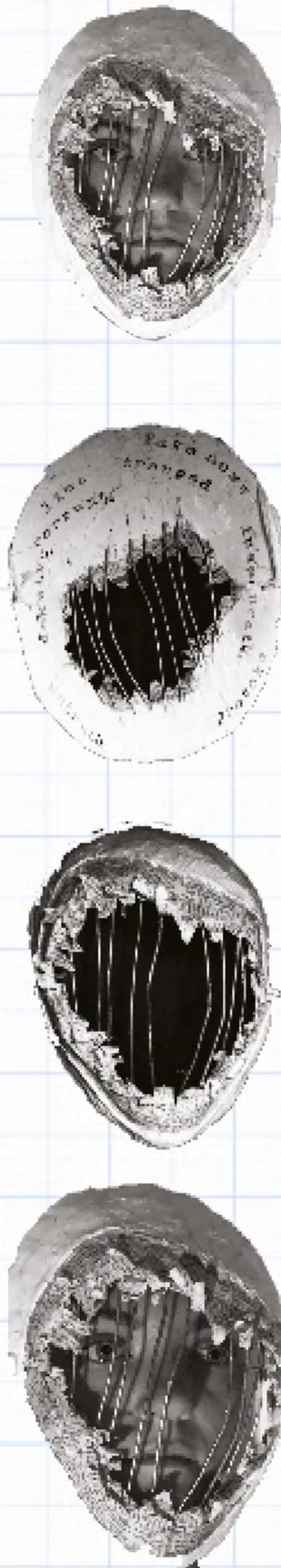
✈ CONCEPTS ✈



Conceptual Models expressing the main concepts throught the projet: trapped, disorientated, lost, uncomfortable.

TRAPPED IN THE BLACK BOX

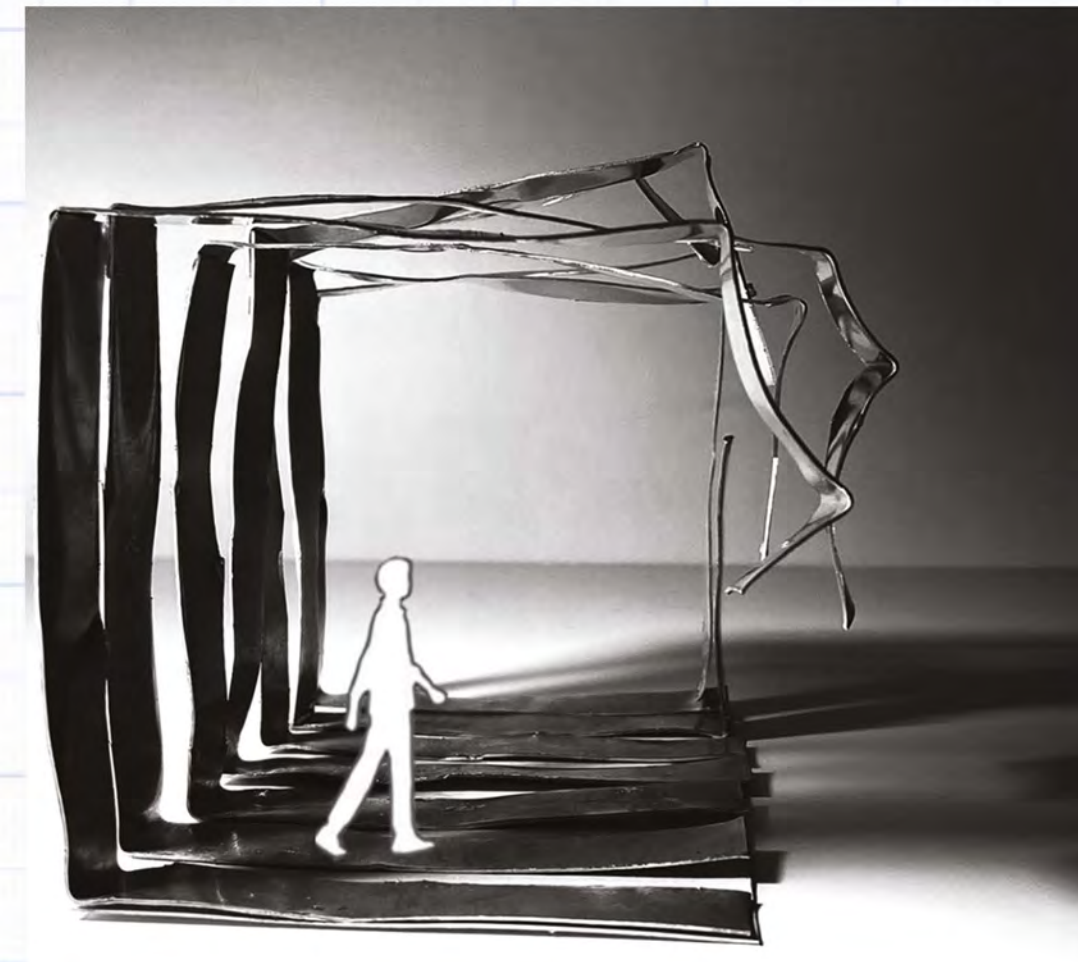
The mask creates a physical barrier made up of all the fake and misinformation those in authority have created and produced, making society feel trapped. As you enter the space for education, the mask begins to crack as the truth is revealed. The use of newspaper relates to fake news.



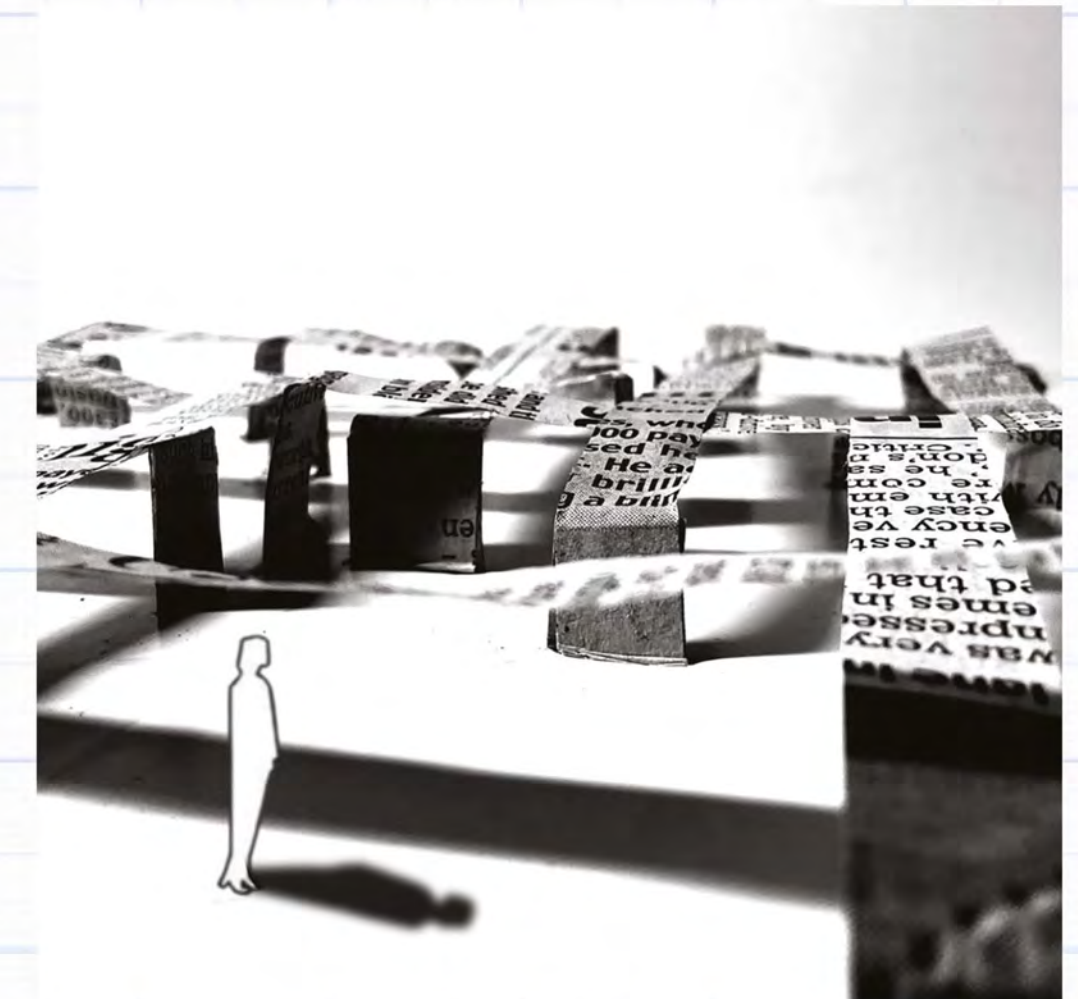
THE COCKPIT CONCEPT



THE BLACK BOX CONCEPT



THE DESCENT CONCEPT



THE CABIN CONCEPT

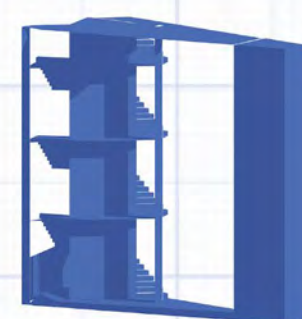
KEY MOVES



KINETIC EXTENSIONS



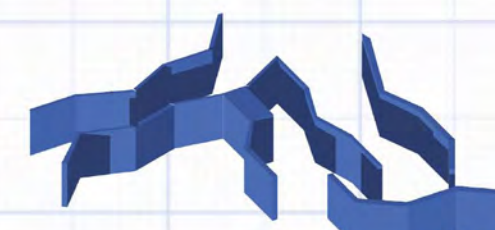
ATRIUM



STAIRCASE TOWER



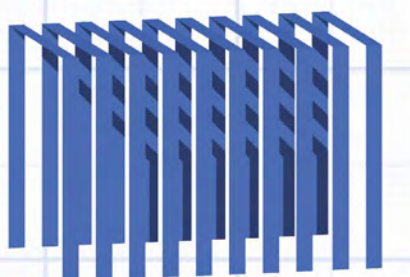
BLACK BOX



DISORIENTATED MAZE



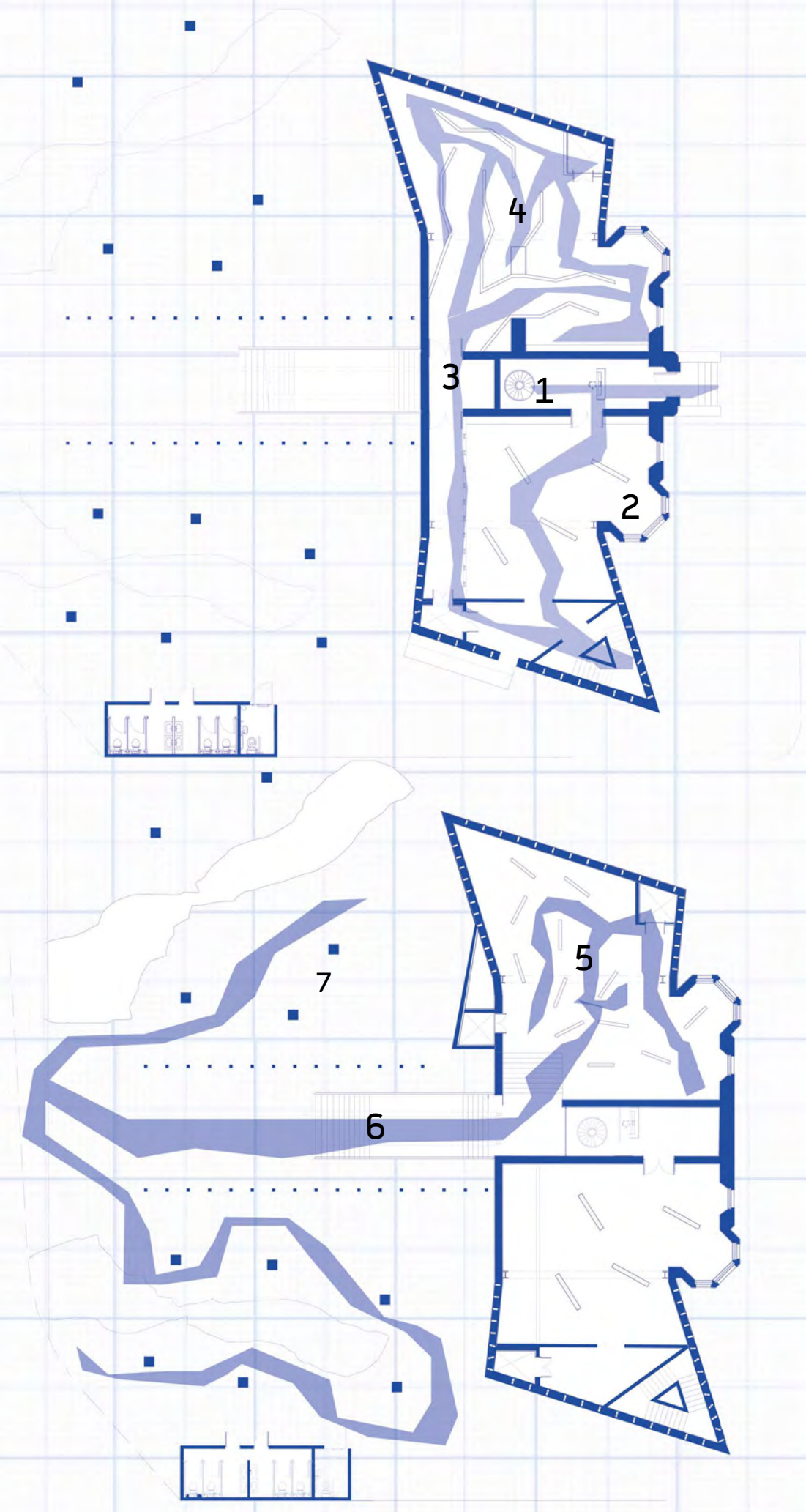
OPEN MAZE



EXTERIOR TUNNEL

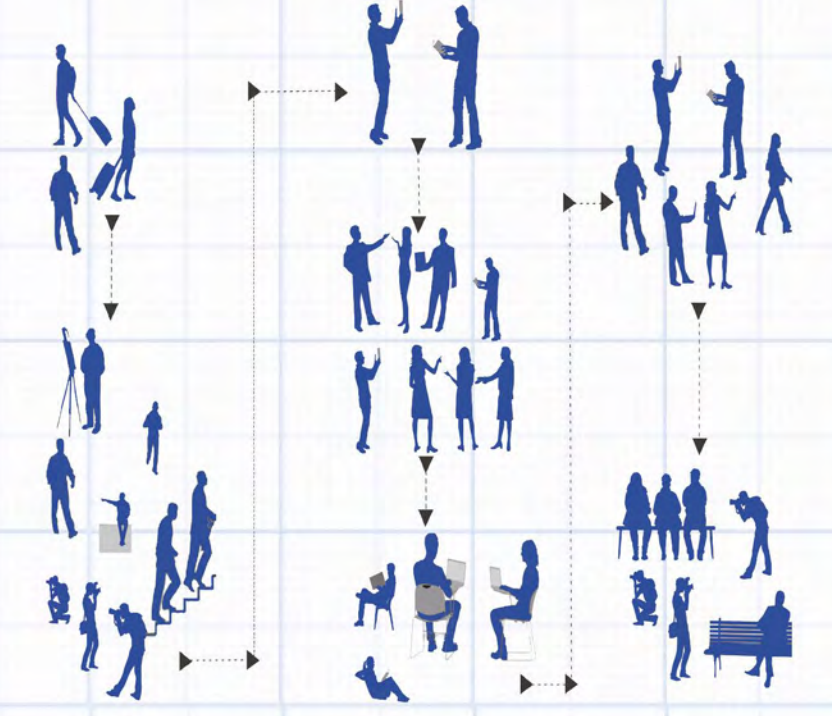


WITHIN THE AIRCRAFT

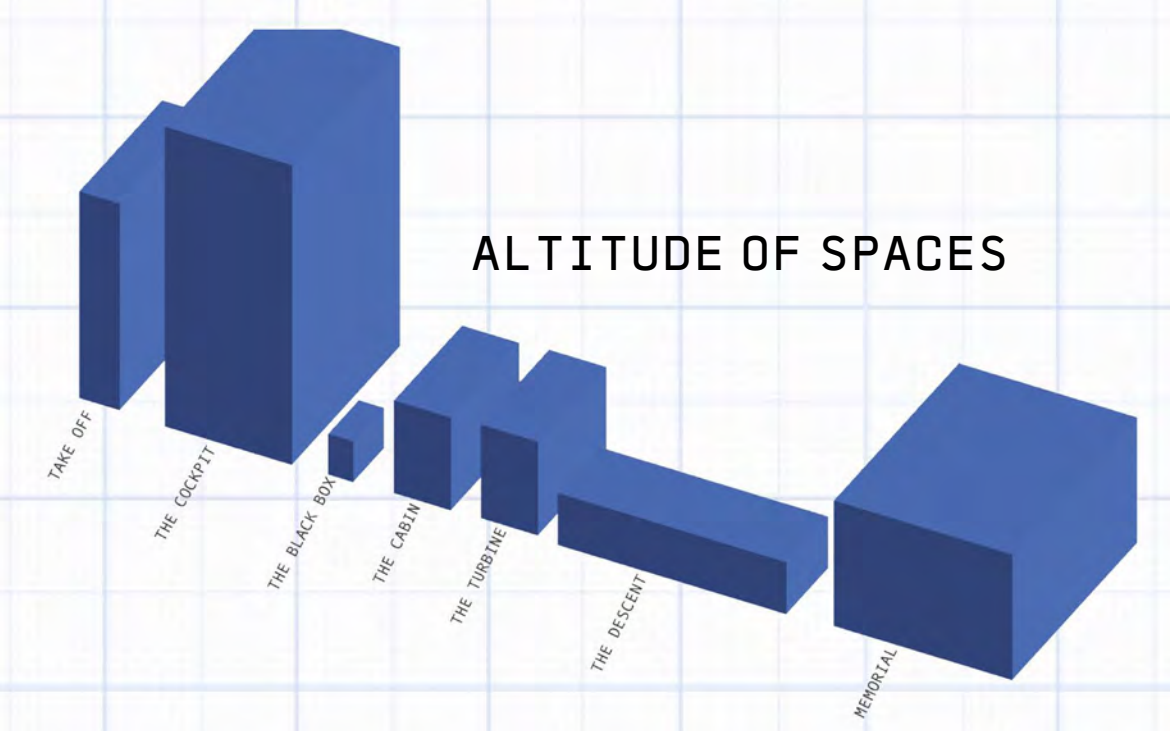


- CIRCULATION**
1. TAKE OFF
 2. THE COCKPIT
 3. THE BLACK BOX
 4. THE CABIN
 5. THE TURBINE
 6. THE DESCENT
 7. MEMORIAL

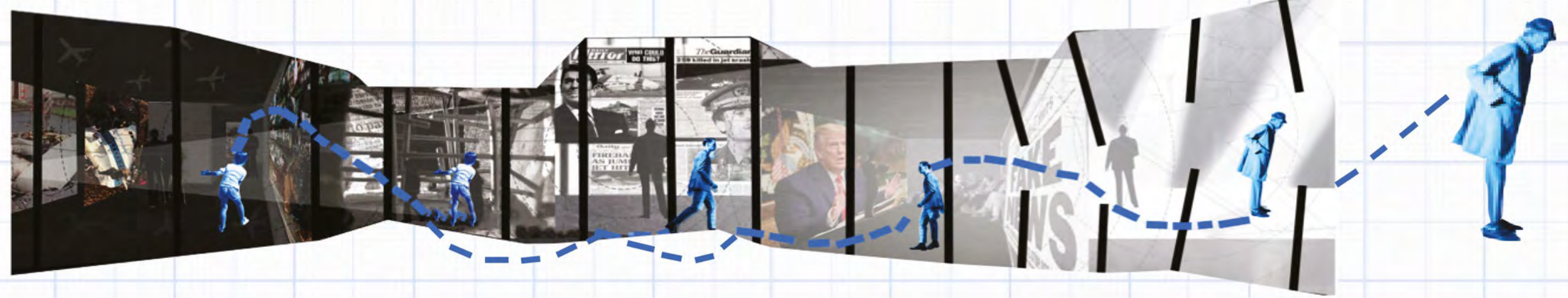
PASSENGER ACTIVITIES



ALTITUDE OF SPACES



PROCESS DIAGRAM



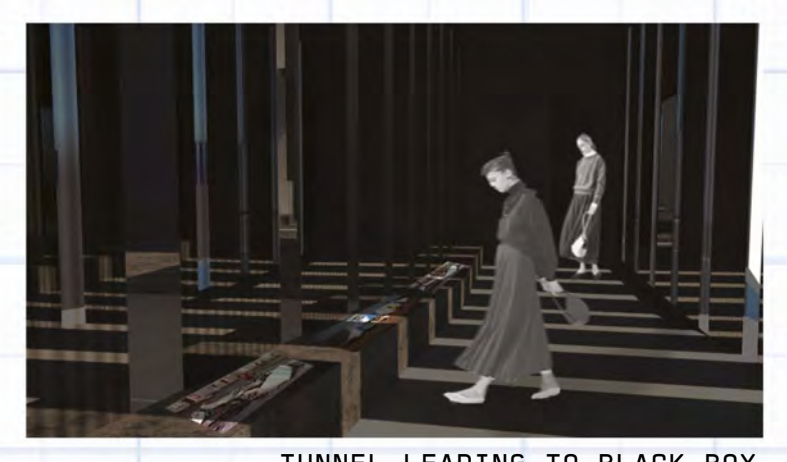
VIEWING TOWER - THE COCKPIT



TAKE OFF



THE COCKPIT



TUNNEL LEADING TO BLACK BOX



THE BLACK BOX



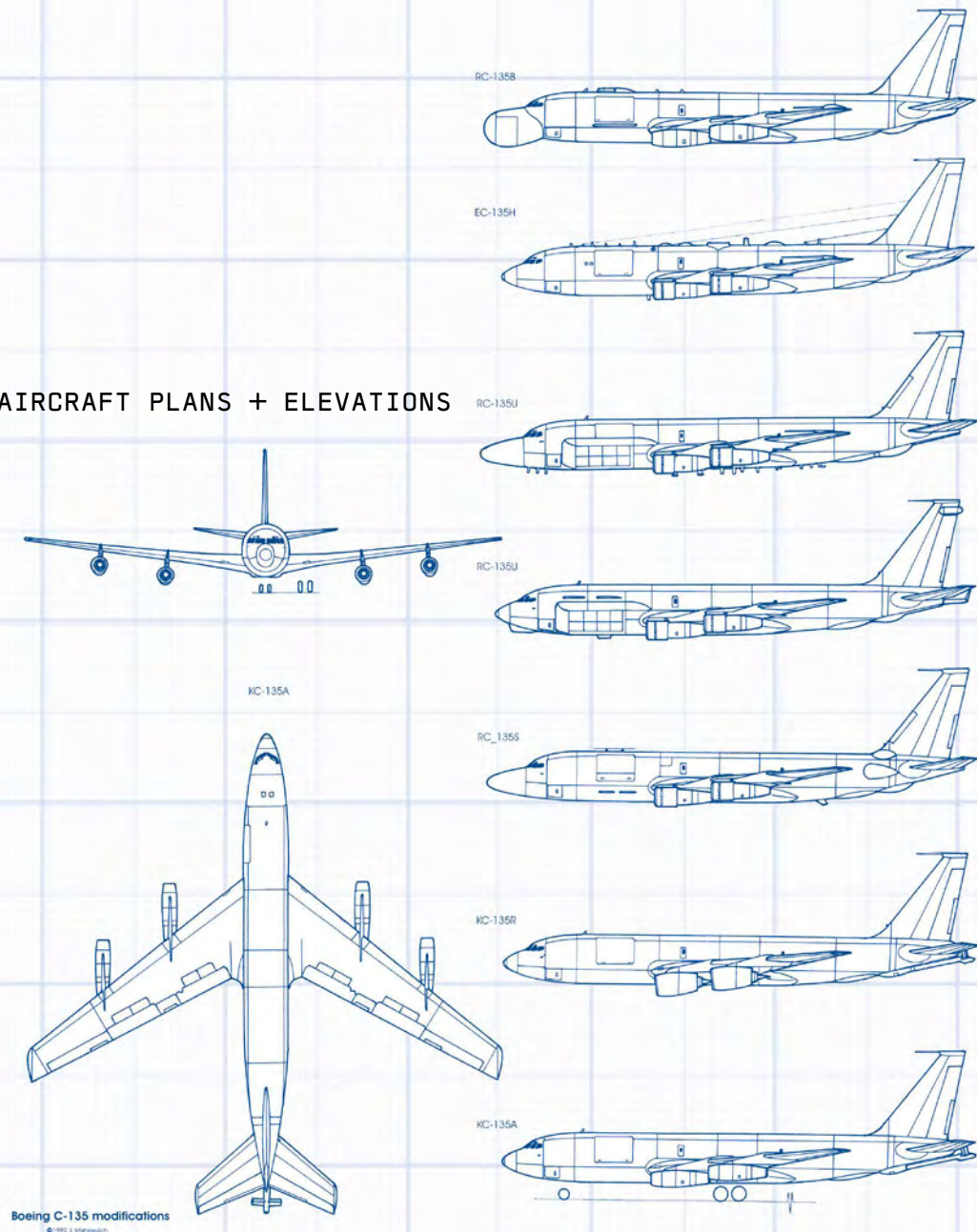
THE TURBINE



THE DESCENT

✈️ AIRCRAFT DESIGN ✈️

AIRCRAFT PLANS + ELEVATIONS



Inspiration taken from winged aircraft forms to create extensions.



GROUND FLOOR PLAN



FIRST FLOOR PLAN



SECTION A-A



FRONT ELEVATION



SOUTH ELEVATION



NORTH ELEVATION

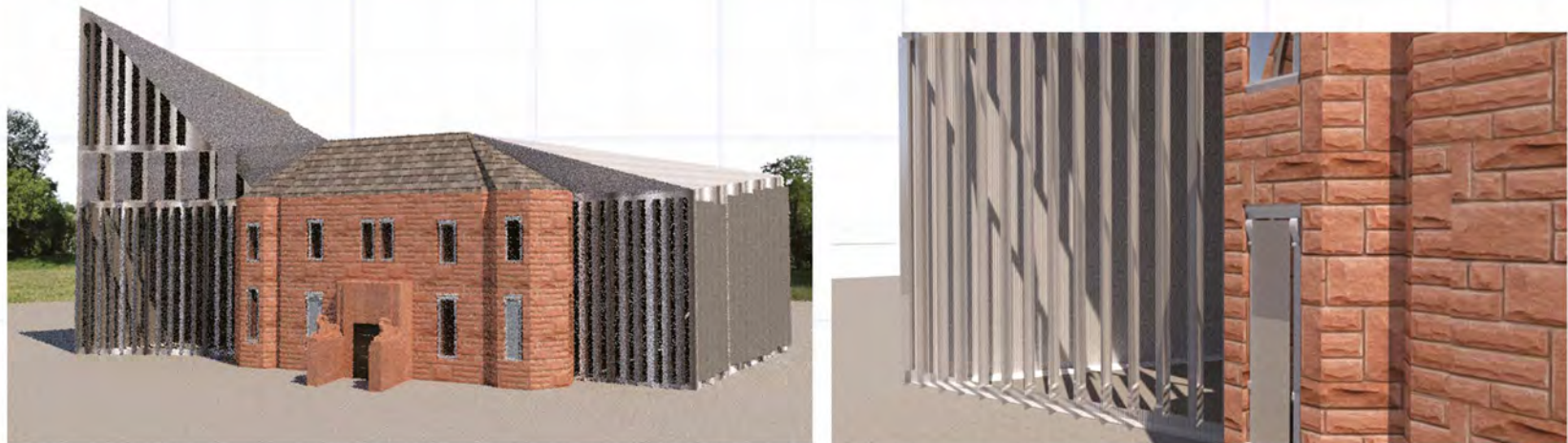
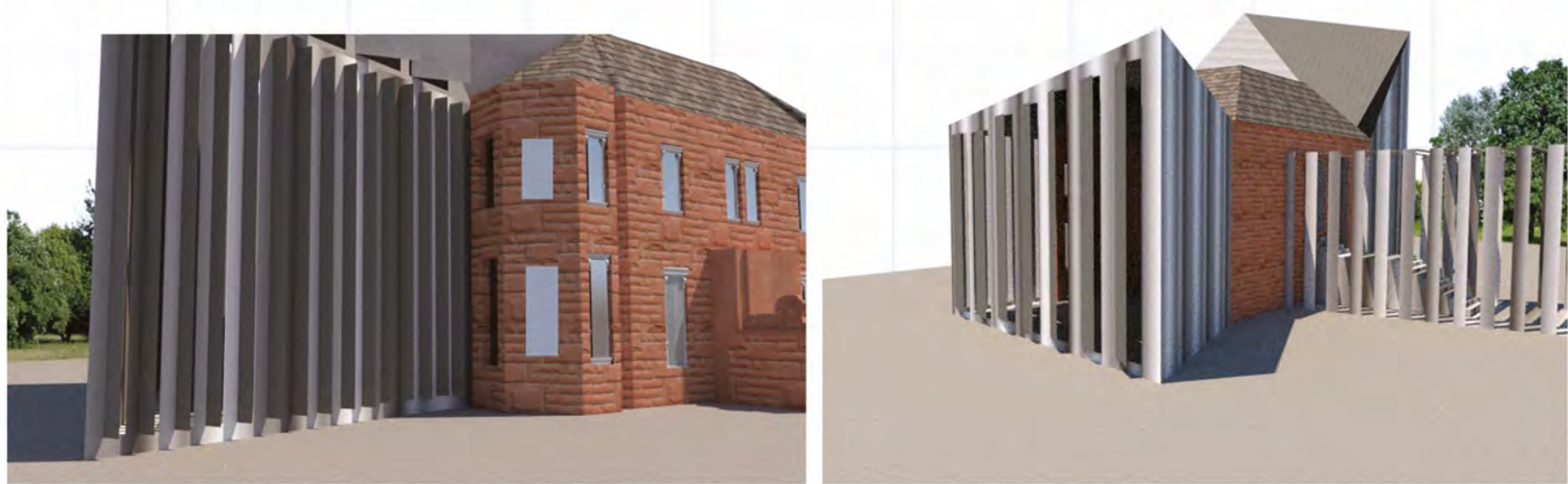


REAR ELEVATION

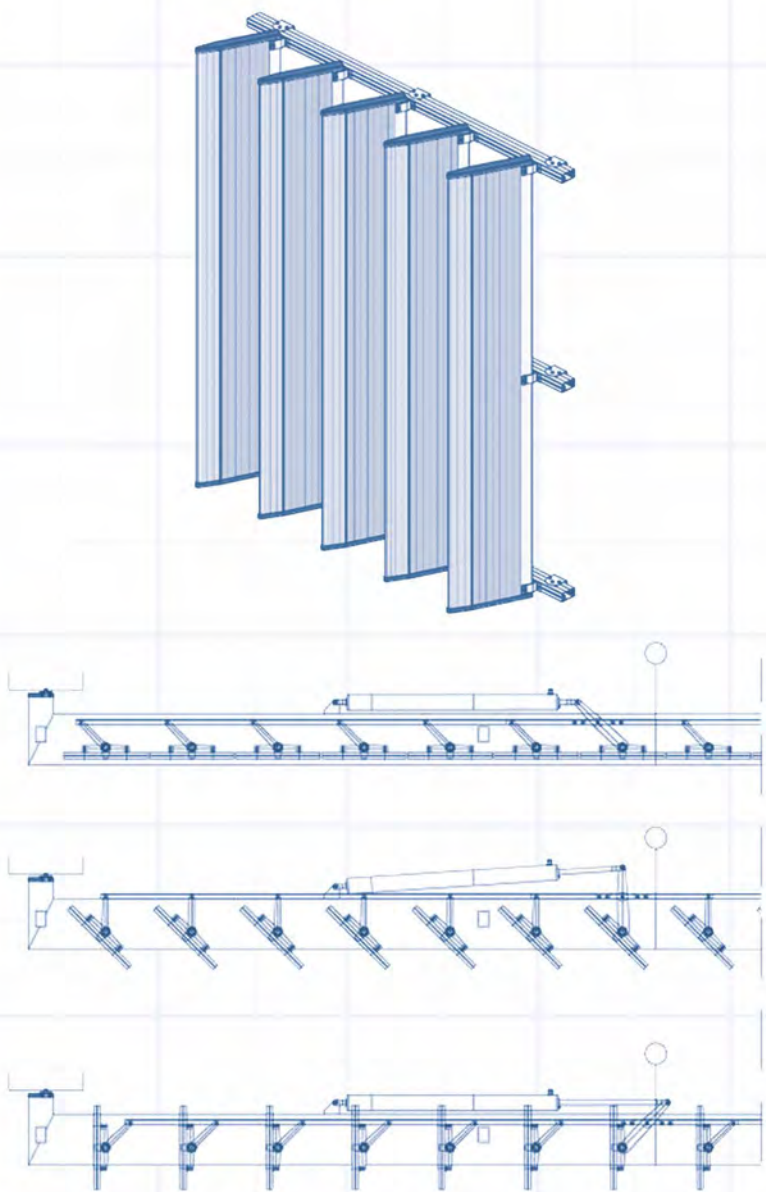


SECTION B-B

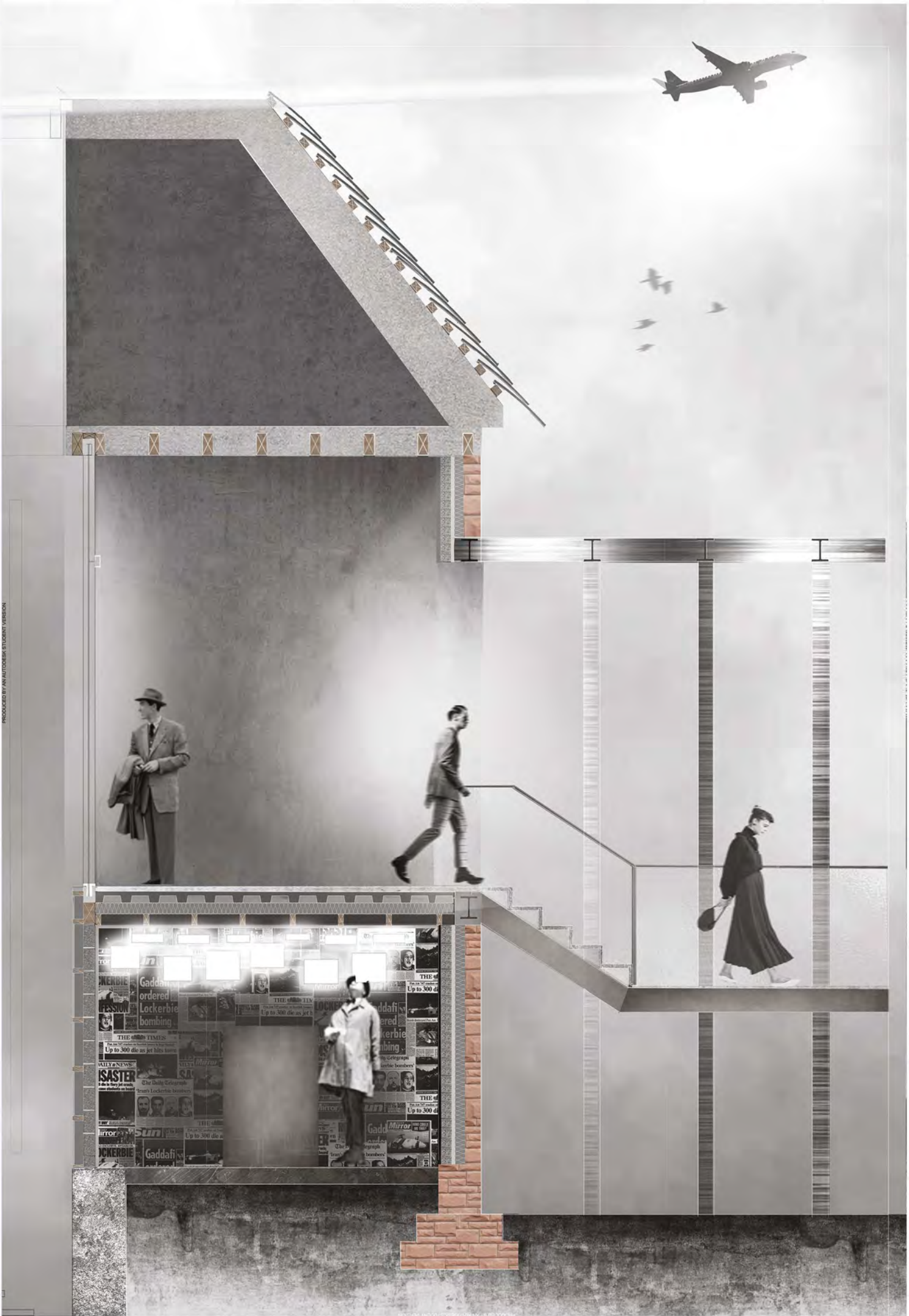
✈️ AIRCRAFT DETAIL ✈️



The architectural language contrasts with the original red sandstone building as parasitic architecture will display metallic, aircraft-like extensions which will protrude from the north and south, crashing through the existing fabric. These extensions accommodate kinetic facades which identify with the movements of an aircraft.



KINETIC FACADE DETAILS



1:20 DETAIL

MATERIALITY

REFLECTIVE ALUMINIUM



REFLECTIVE ALUMINIUM



BRUSHED ALUMINIUM



POLISHED CONCRETE



ZINC METAL

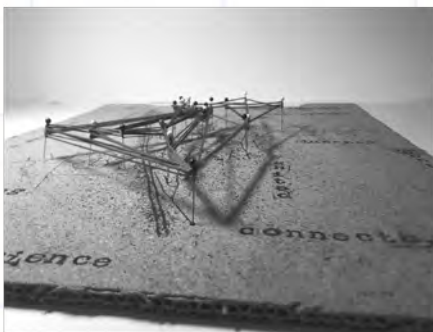
REINFORCED CONCRETE



POLISHED CONCRETE



MANIFESTO



It aims to show how a place or journey can make you feel at home and a part of a community. This personal manifesto also has links to a flight map, and shows how an aircraft also makes many journeys to take people to their chosen destination, and how the aircraft will also pass many other planes on its journey.

M
O
V
E
M
E
N
T

D
Y
N
A
M
I
C

K
I
N
E
T
I
C

M
O
T
I
O
N

UNIVERSAL BEAM STRINGER



LEWIS DECK, INSULATION + TIMBER BEAMS



GLASS FIXING



UNIVERSAL BEAM FIXING



GLASS DETAIL



WALL DETAIL



UNIVERSAL BEAM



EAVES DETAIL