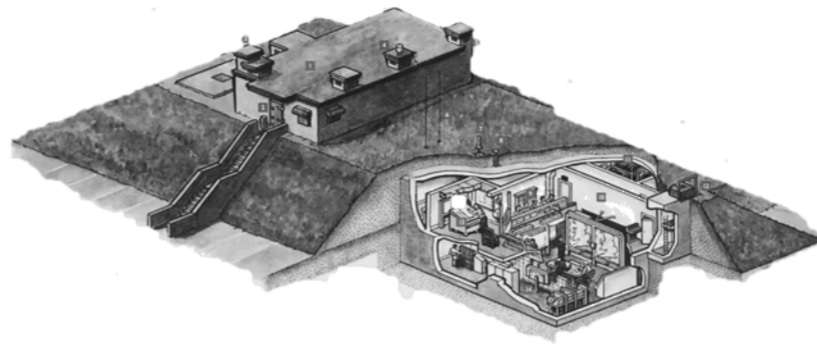
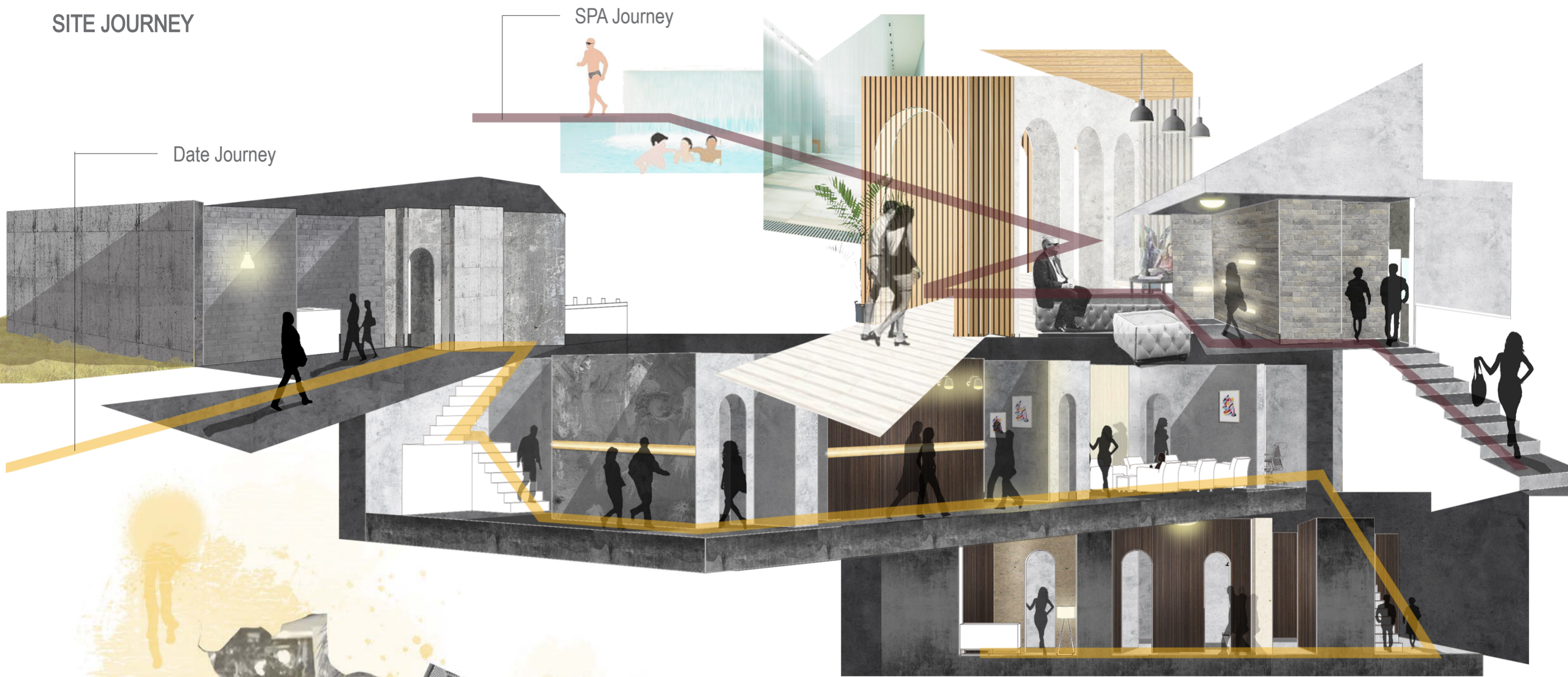


UNDERGROUND LOVE

The York Cold War will become 'Underground Love' exploring the culture of emotional and physical relationships. In one journey it will explore the release of pent-up energies from the pain of suppressing one's emotional desires and the release of these emotions, the alternative journey explores heightened anxiety of modern life and the need to calm our basic instincts of flight and fight.



SITE JOURNEY

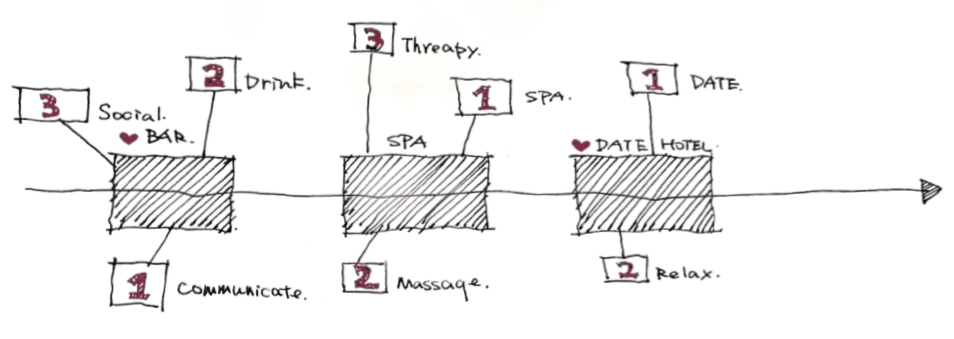
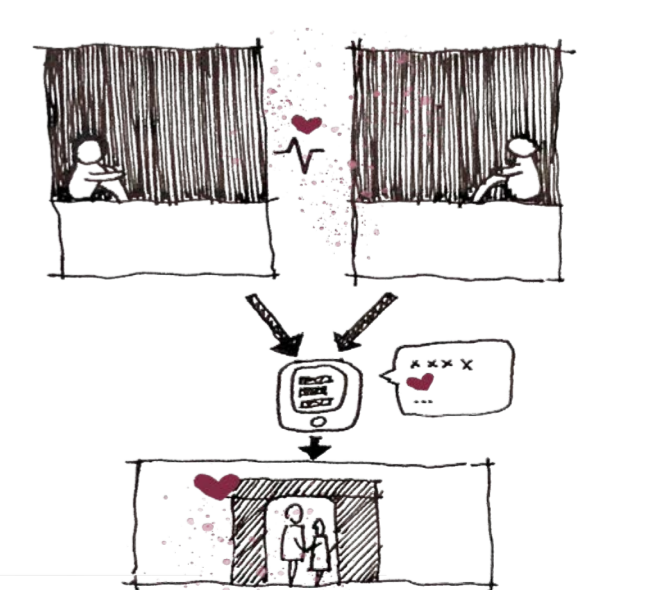


HOW TO COMBINE ?

The first atomic bombs were dropped in 1945, on the Japanese cities of Hiroshima and Nagasaki. The threat of nuclear war became the single greatest threat to Humanity. In the UK, the threat of a nuclear attack was palpable and one of the responses was to establish a Cold War Bunker to test the use of thermonuclear weapons. Here 60 members of staff would work long hours, and intelligence sensitivities resulted in them often unable to reunite with their families and support their emotional needs whilst suppressed inside the bunker.

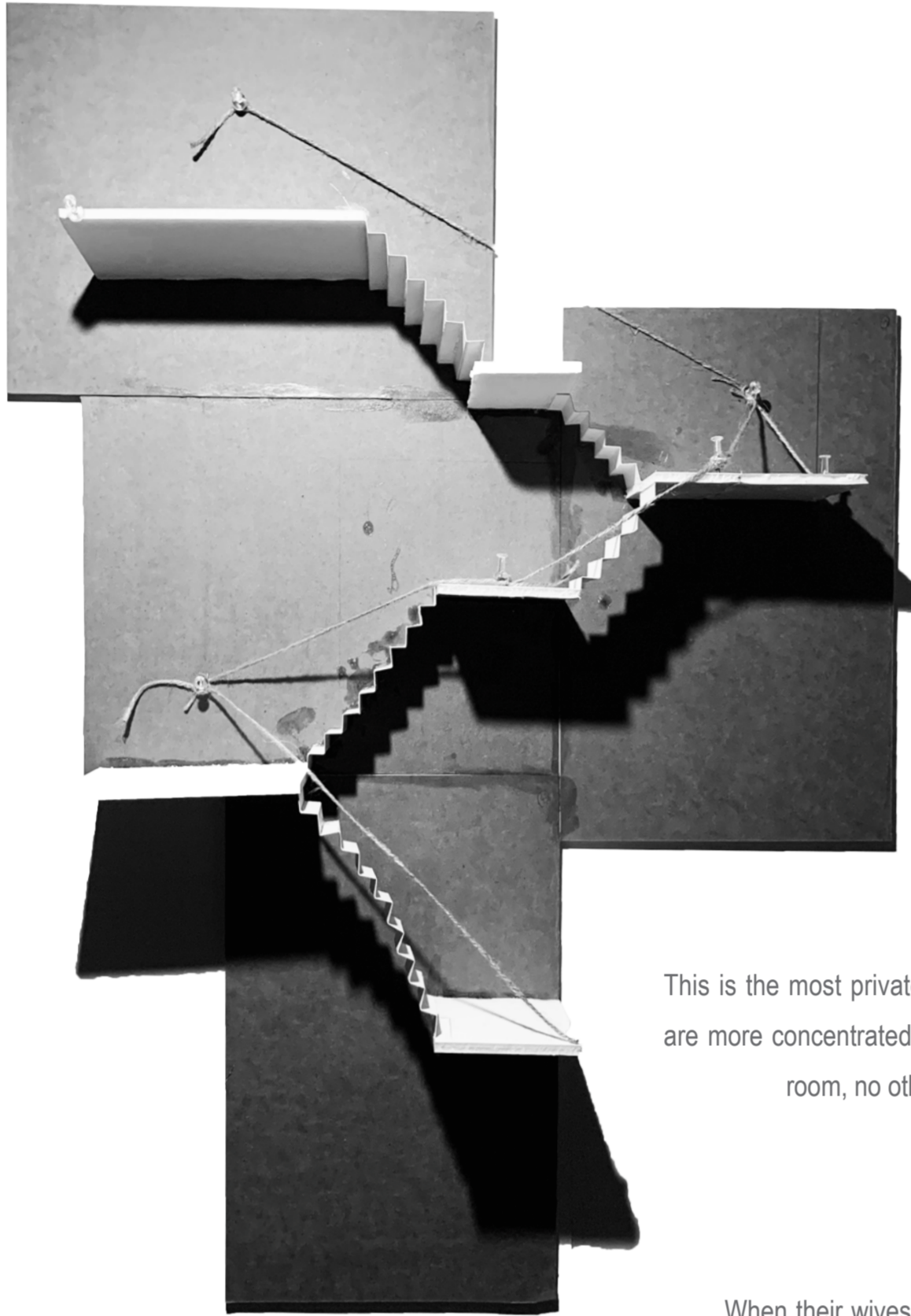
Human relationships and courting have always been the preserve of specific rituals and specific spaces, but contemporary personal or intimate relationships have changed massively since the development of the internet. Often family and very personal relationships are carried out mainly online.

Covid-19 has presented a renewed 'single greatest threat to humanity' a very different type of physical and emotional incarceration, with couples and families forced into isolation with digital only contact for months on end. The thought of dating becomes solely a digital rendezvous. Anxiety and mental health issues have increased hugely since lockdown, with the act of physical touch clouded with infection control measures and anxiety of meeting people face to face and breathing the same air. Through necessity, the entire population of the world have been denied their basic human right to meeting, touch and to speak freely, face to face with loved ones, surely comparable with a cold war military torture tactic.



Concept Mashing

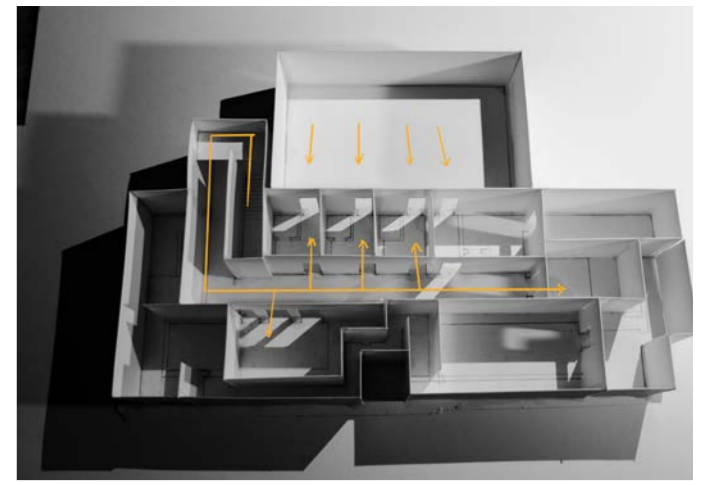
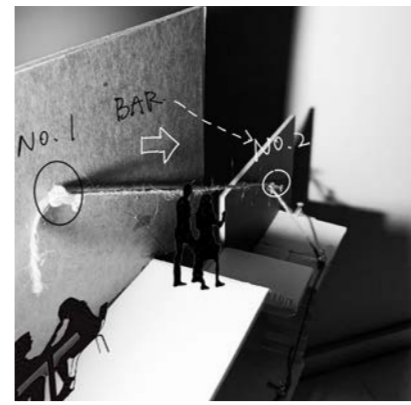
The exploration of 4 key spaces and experience



No.1 BAR

Emotional warming catalyst

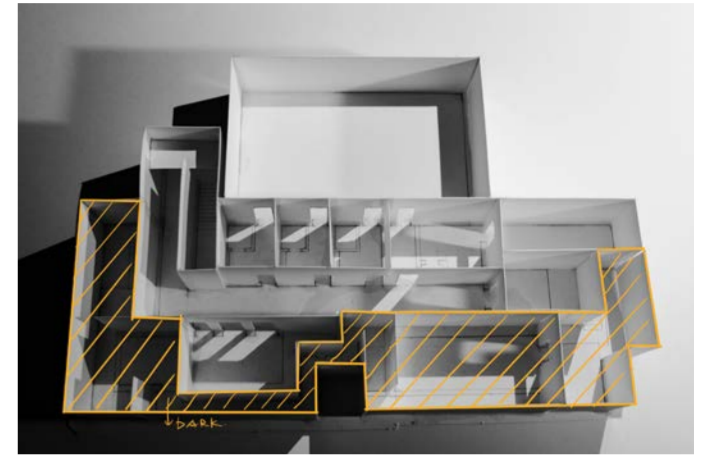
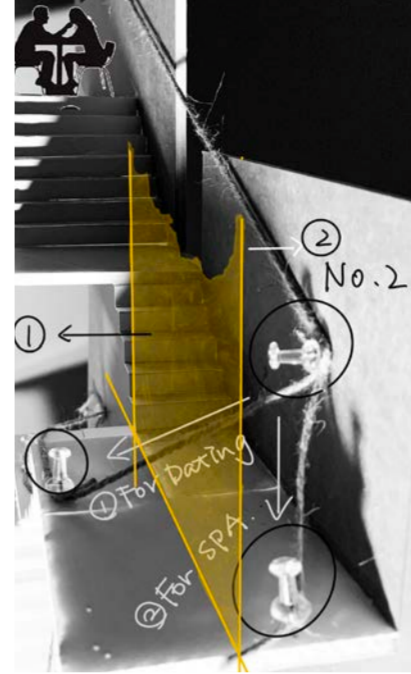
Here, the intensity of lighting will gather visitors in specific spaces. In addition to alcohol, low ambient lighting makes the atmosphere more ambiguous and mysterious.



No.2 SPA

Mysterious passage hidden in the spa

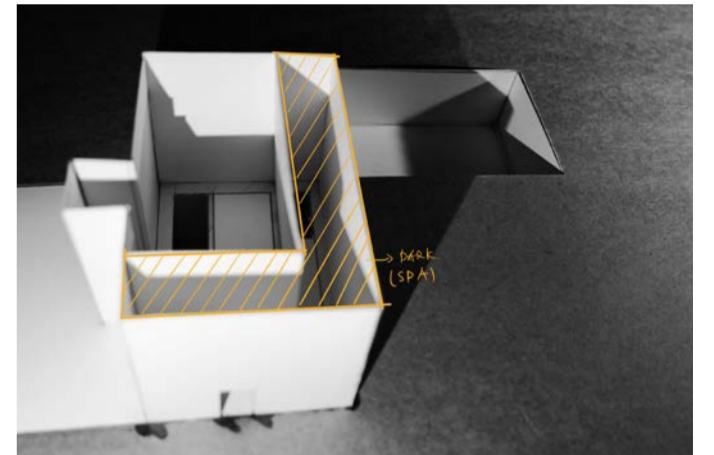
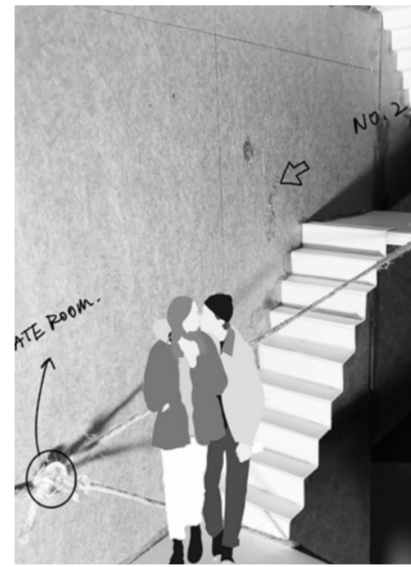
In this space, its function is related to the spa, but there is a hidden passage in a particular room that can lead to the dating room on the second floor, so this space has two sides. The pipelines are relatively dark for most spa spaces, giving customers a somewhat relaxing and private environment. So compared to the area on the first floor, the light on this floor is relatively dim.



No.3 DATE ROOM

Exciting date

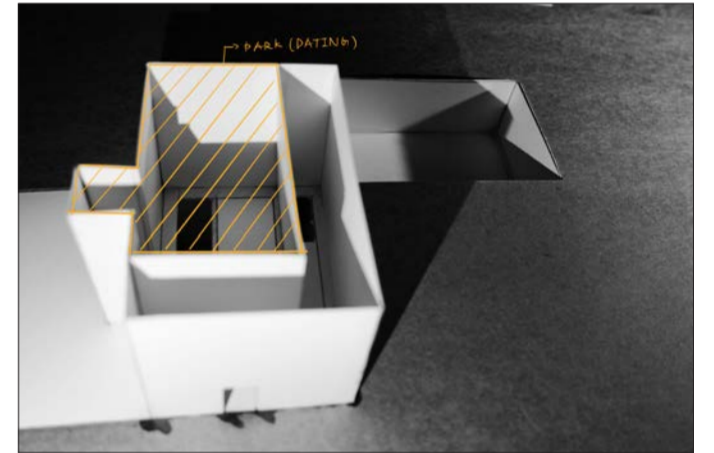
This is the most private and exciting place for them, so the lights are more concentrated in the room so that when they walk to this room, no other people will pay attention to who they are.



No.4 Exit

Life-saving exit

When their wives or husbands come to them, it is difficult for visitors to return along the original route, because they will be discovered, so they need a particular passage to avoid, and to escape.



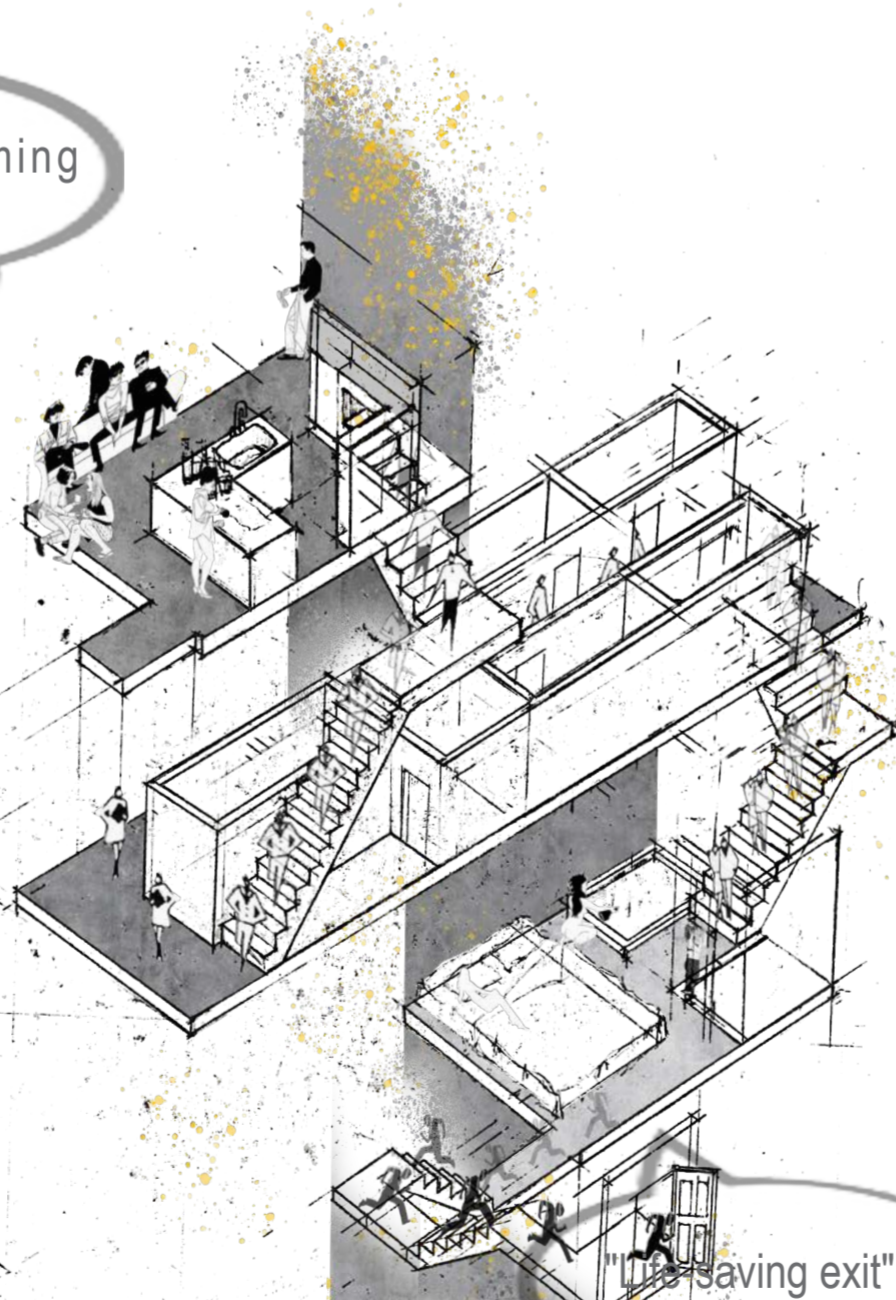
Alcohol can increase the ambiguous atmosphere.

"Emotional warming catalyst"

Before entering the real dating space, they need to have a drink here and increase communication with each other.

The function of the second basement level should be relatively single, it mainly serves those who come here for dating.

"Physical and mental relaxation"



"Secret passage"

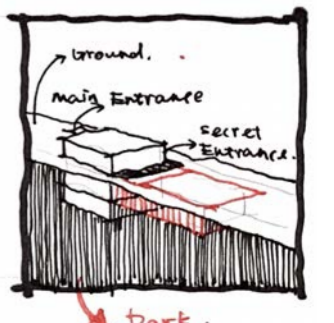
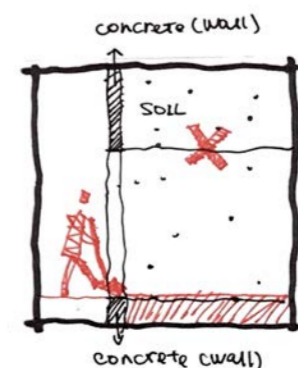
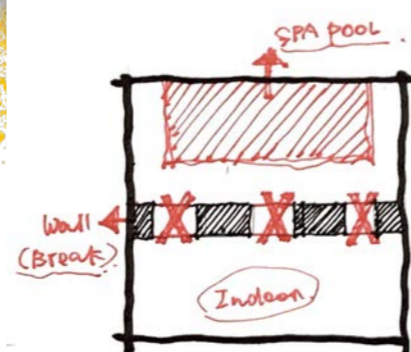
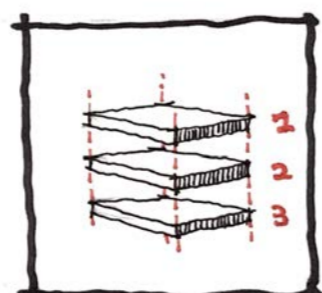
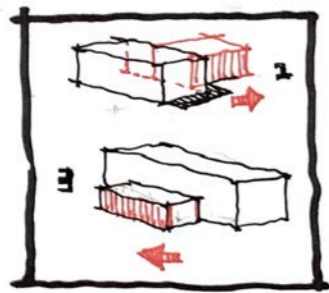
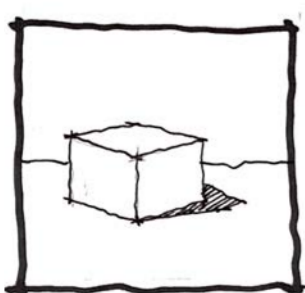
From the tunnel hidden in the massage room, there is the dating space on the second floor of the basement.

"Exciting date"

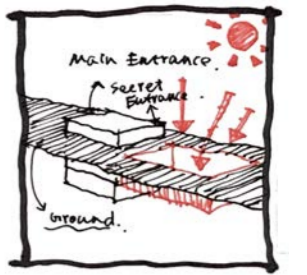
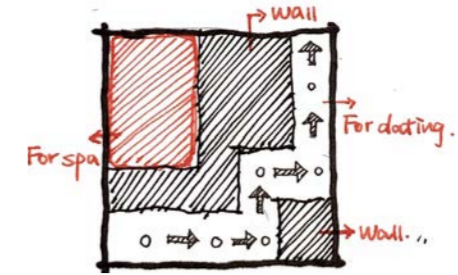
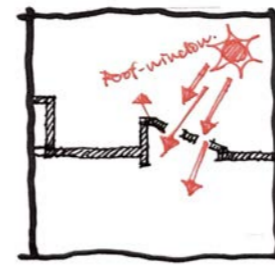
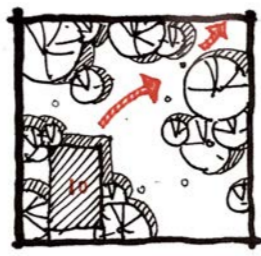
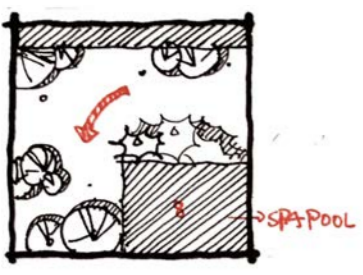
This place allows them to run directly from the dating room.

"Life-saving exit"

This place allows them to run directly from the dating room.



Motion & Process



Two journeys explore phenomenological, physical, material and emotional differences.

One journey is that of preparation, online discussions, secrecy, without physical borders, a dating space for the 21st Century. This journey is hidden, through its landscape interventions above ground, arriving at the hidden entrance whose location is only revealed through invite. Its materiality explores the emotional response to physically descending underground; the privacy, the excitement. The harsh concrete of the bunker developing alongside the emotional journey, original raw concrete changing to precast or insitu to respond to human experience and space. The mass of this material excavates and creates new forms and underground spaces, artificial lighting above, below, hidden and natural, all define and spaces and emotions.

The alterative journey is interwoven with the first; their route intertwined, almost, but never connecting. This journey is too one of emotional release; releasing anxiety, stress. This is a very public journey to a spa space, a bathing space referring to the traditional Chinese rituals of cleansing the body, soul and mind. Its materiality too develops along the journey, but this time the raw concrete of the bunker gradually becomes clad in timber, or ceramics but always a glimmer of concrete remains.







External Ground Level

Rammed Earth

Concrete Layer

Waterproof Layer

External Wall

Internal Wall

Overhead Support Track

Sliding Door

Floor Tiles

Perimeter Insulation

Drainage Pipes

Detail Section Scale 1:5 @ A0

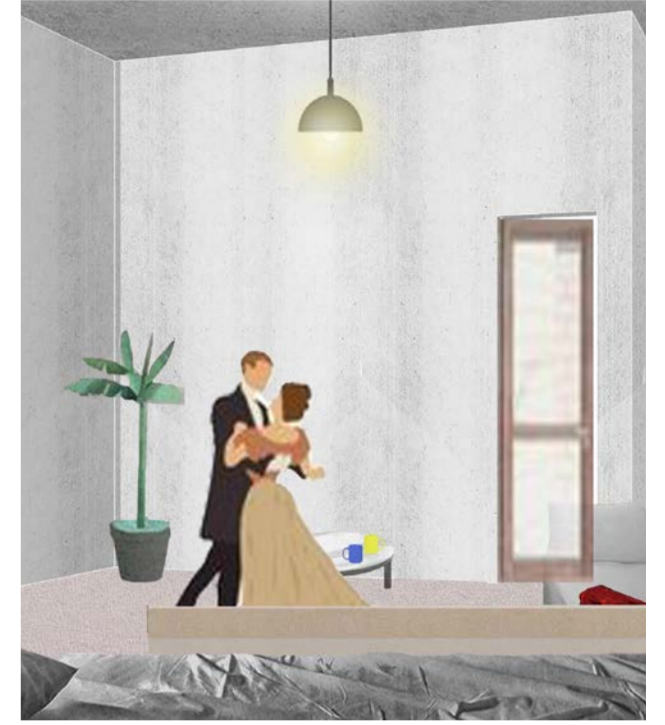
Most of the bunker is below ground and it is difficult for the indoor space to have natural light. Therefore, the outdoor swimming pool is formed, making a skylight through the landscape into the "Secret Garden"



Outdoor spa pool

Due to the historic context of this building, the walls are primarily reinforced insitu concrete throughout.

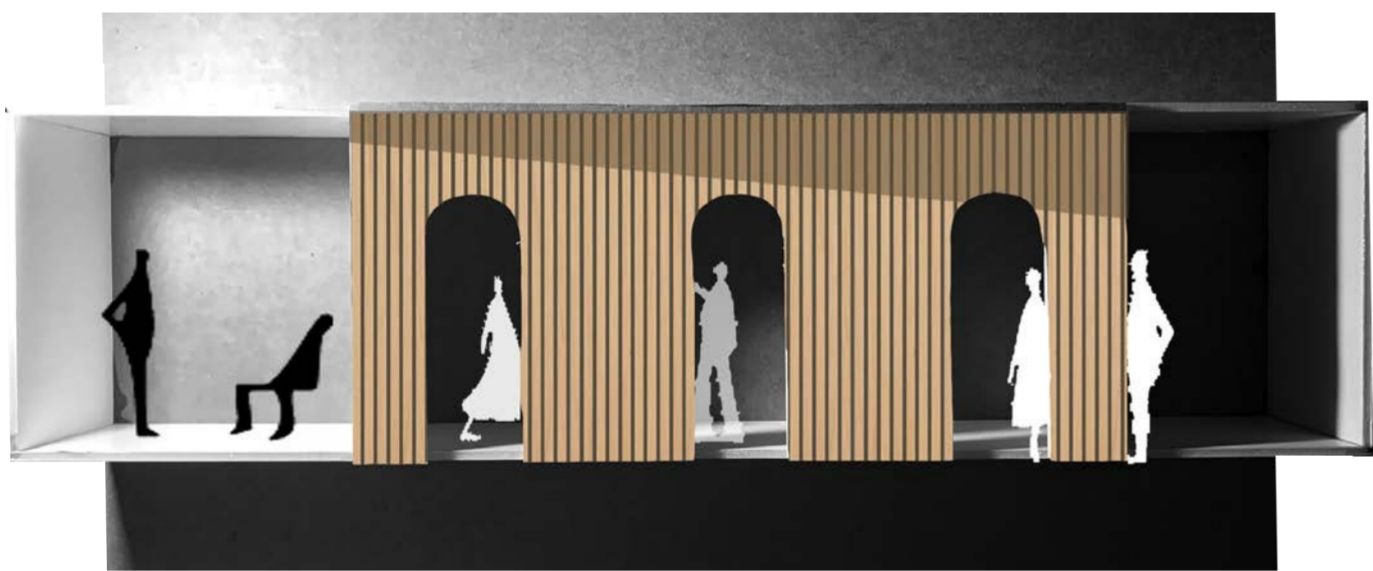
It is close to the outdoor spa pool for this wall because this part of the space belongs to the spa space. Simultaneously, the waterproofing protects the building and the internal insulation, ensuring that the temperature inside is kept in balance.



Interior dating room 1



Interior dating room 2



How about going to a spa after drinking coffee?

The outdoor dating is located on level -2. People can walk out from the corridor on the second basement floor and walk through this circular corridor to the outdoor dating space below the second basement floor. At the same time, the light on the ground can come in through the glass on the top, but it is not mainly sufficient because most of the space is under the pool, which can also ensure a certain degree of privacy.

