

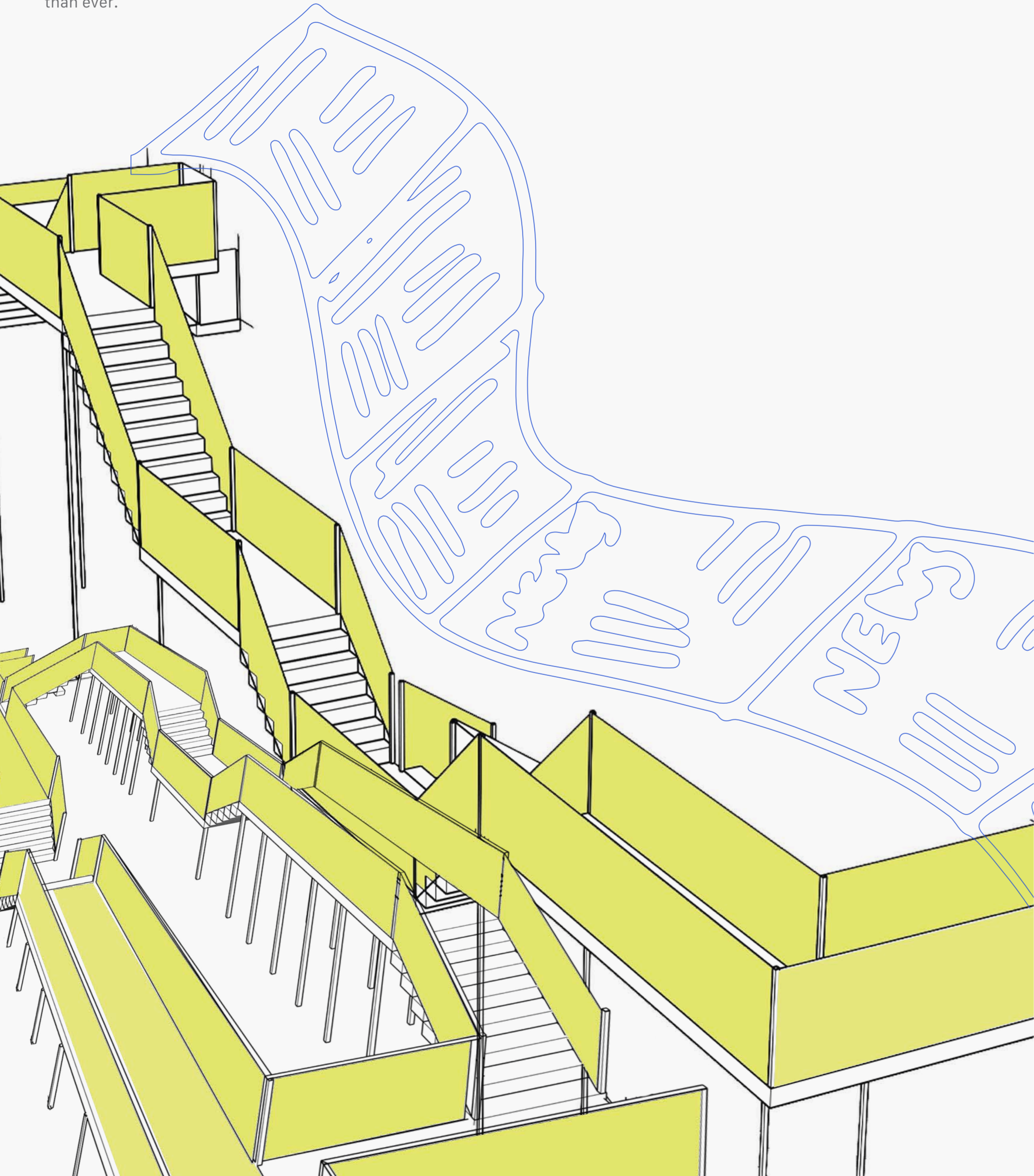
News Never Stops

Hebden Bridge has a rich history of riots, resistance and protest due to the liberality of the people who live there and the passion they have for positive change.

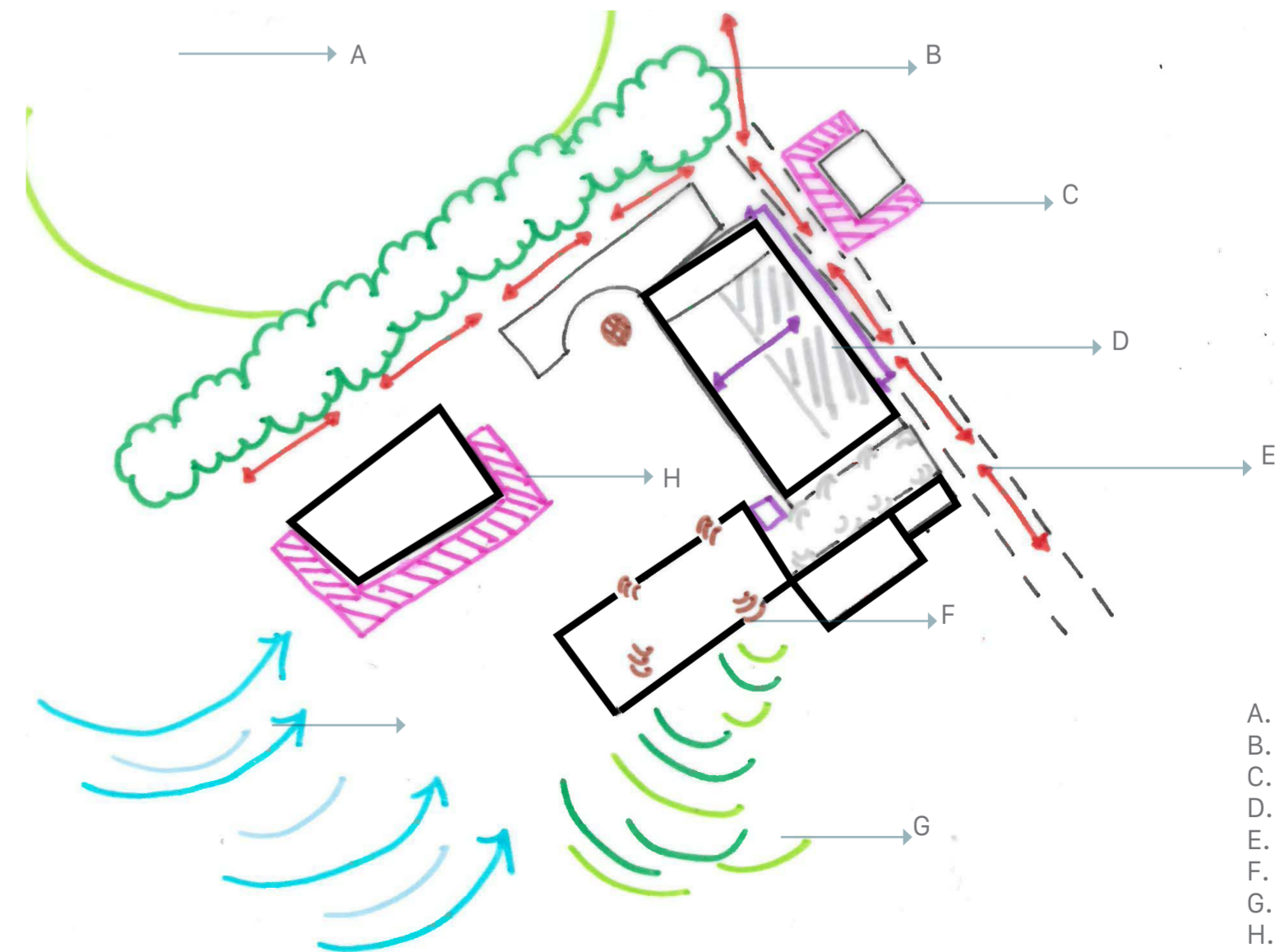
Currently, contemporary news and media is dominated by a few powerful organisations who produce content faster than ever.

Mitchell mill in Hebden Bridge will be developed into a space where news is sourced and printed, in a way which is slow and reliable. An alternative way to produce and consume news which challenges the powerful news organisations through slow research and distribution of printed media.

Due to our right to protest slowly being taken away from us the people of Hebden Bridge need a place they can freely organise and discuss the protests they want to host therefore there will be an undercover print studio within the Mill where people can create their own prints to be used as placards.



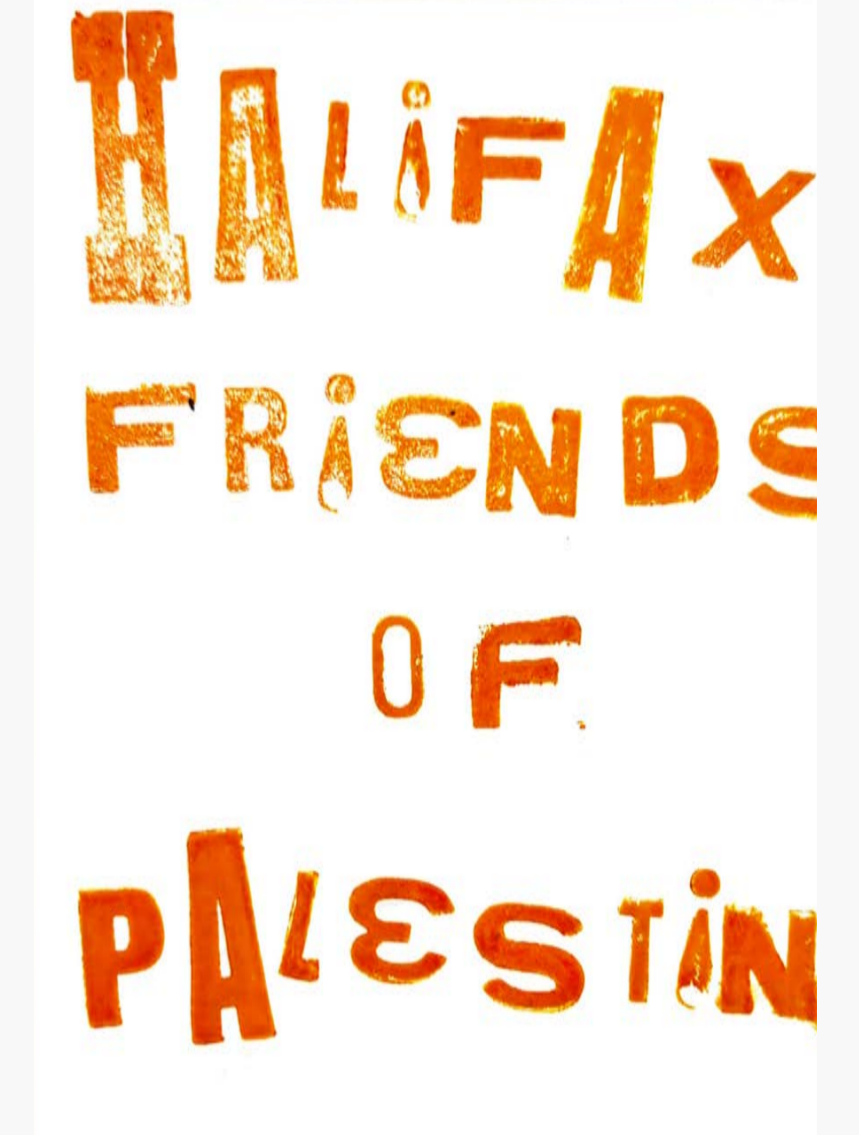
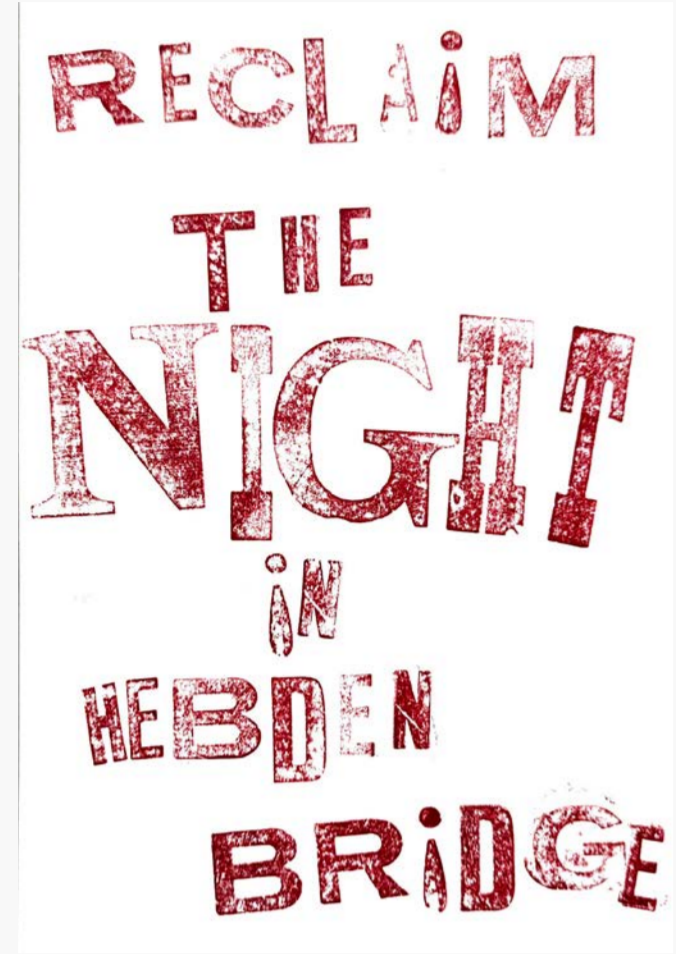
Images of the Site



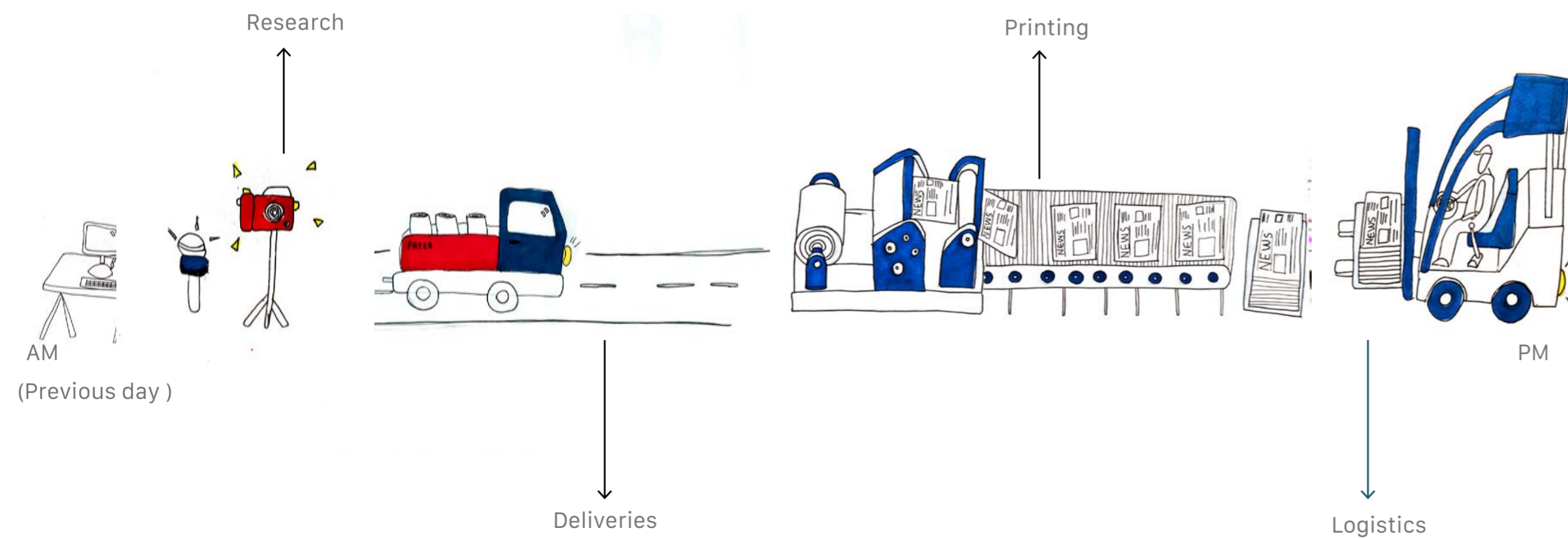
- A. Noise from cricket ground
- B. Deciduous trees
- C. Privacy of neighbors
- D. Deep plan
- E. Public road
- F. Noise from neighbors
- G. Sloping/ uneven ground
- H. Exposed to prevailing wind

Site Constraints

Research



A collection of letter press prints produced to explore the history of protest in Hebden bridge



How is a newspaper produced?



Continuous movement in the production of a newspaper

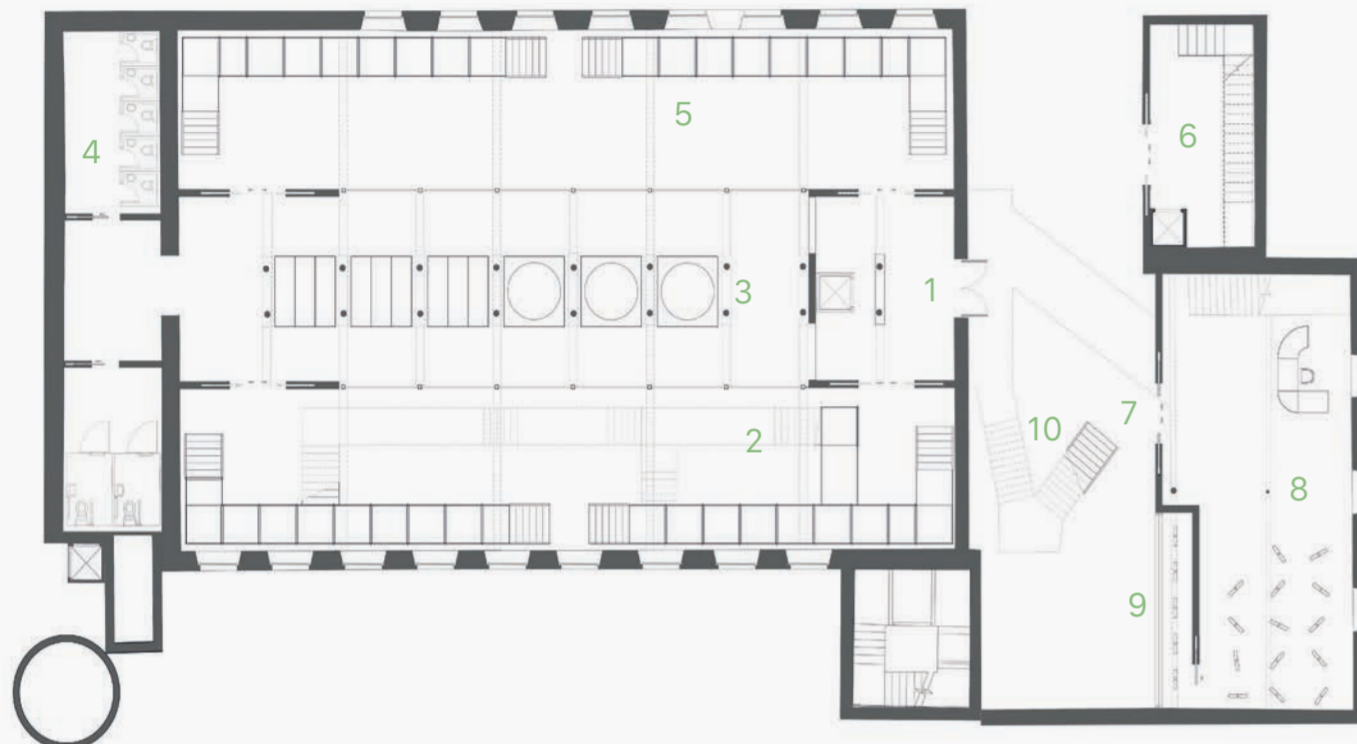
Continuous Movement

The design follows the concept of continuous movement, it is possible to move throughout the whole space using the stairways, bridges and platforms. The ground floor contains the newspaper factory, the second floor contains the mezzanine level offices and the third floor houses the undercover print studios.

The ground and first floors of the 1851 mill have a system of staircases and platforms which wrap around printing machinery which enables the users of the building to view the newspapers as they are being printed. The first floor is a mezzanine level where the metal plates from which the newspapers are printed are produced. The second floor is the undercover print studios which is split into

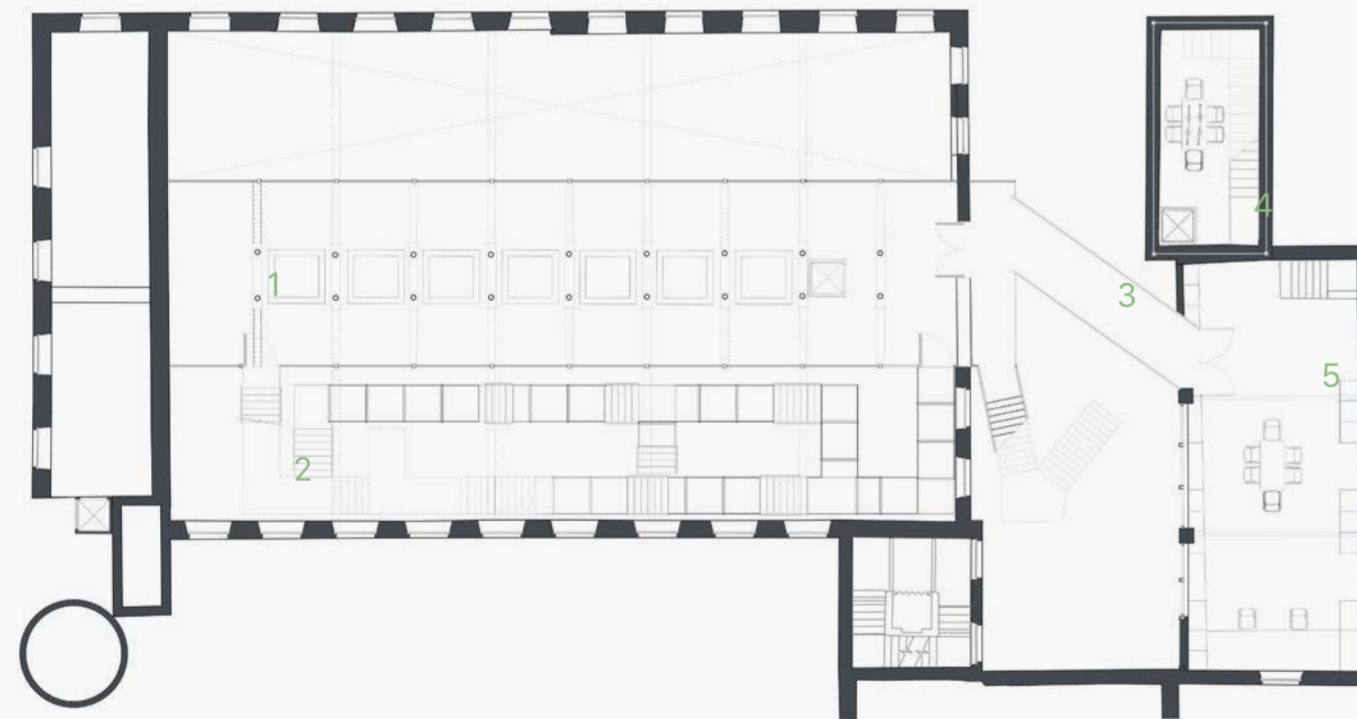
individual printing spaces and a central meeting space. The ground floor of the smaller courtyard building is an exhibition space where the metal plates which print the newspaper are exhibited. The first floor houses a radio station and news production and sourcing offices. There is a bridge that connects the first floor of the two buildings.

Ground Floor Newspaper factory - Not to scale



1. Main entrance
2. Newspaper production
3. Paper and ink storage
4. Toilets
5. Newspaper packing
6. Entrance to radio station
7. Entrance to exhibition space
8. Exhibition space
9. Window display
10. Exterior stairs to 1st floor

First Floor Newspaper factory - Not to scale

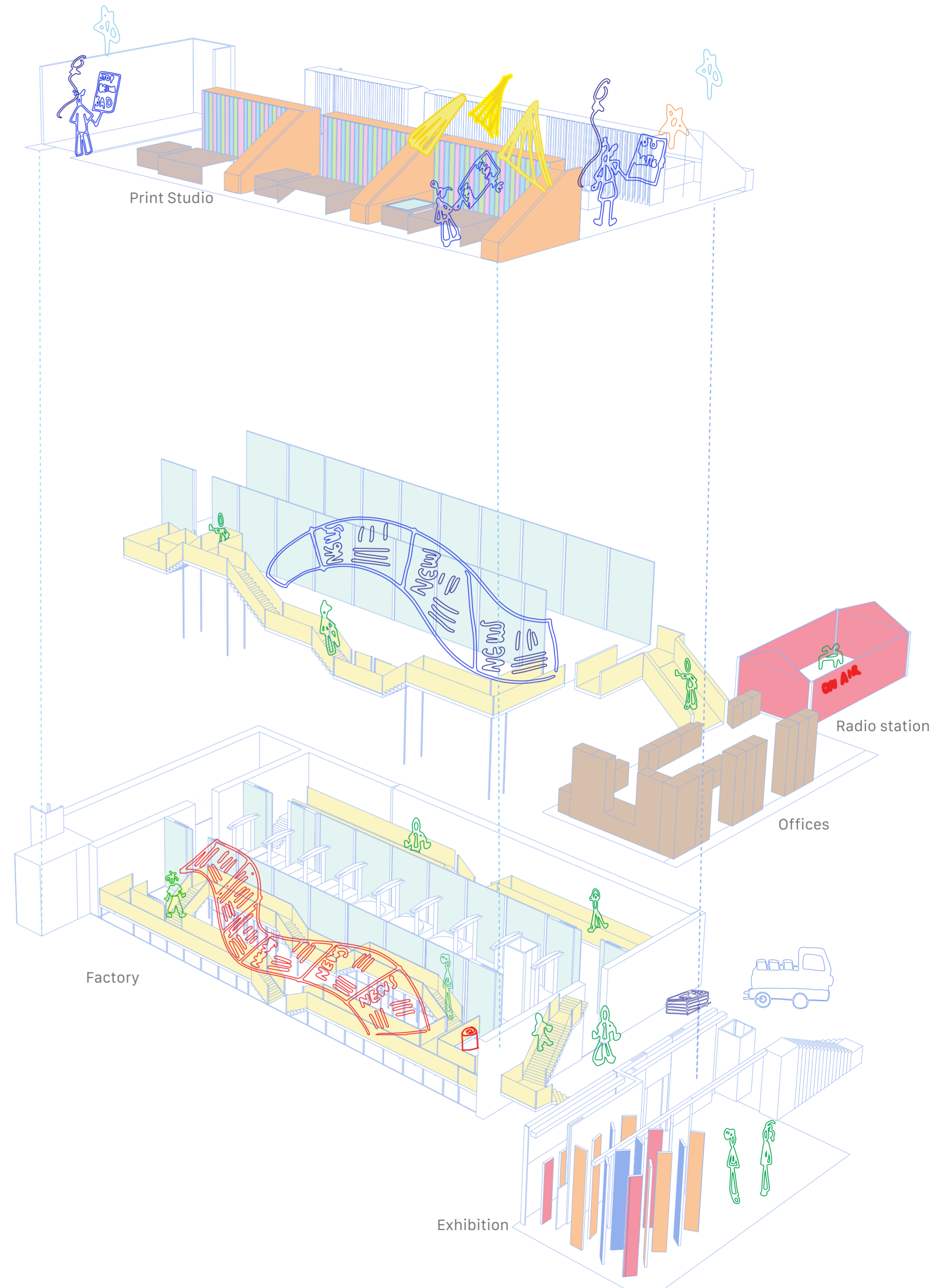


1. Mezzanine Laser studio
2. Double height factory
3. Bridge
4. Radio station
5. Offices

Second Floor Undercover print studios - Not to scale

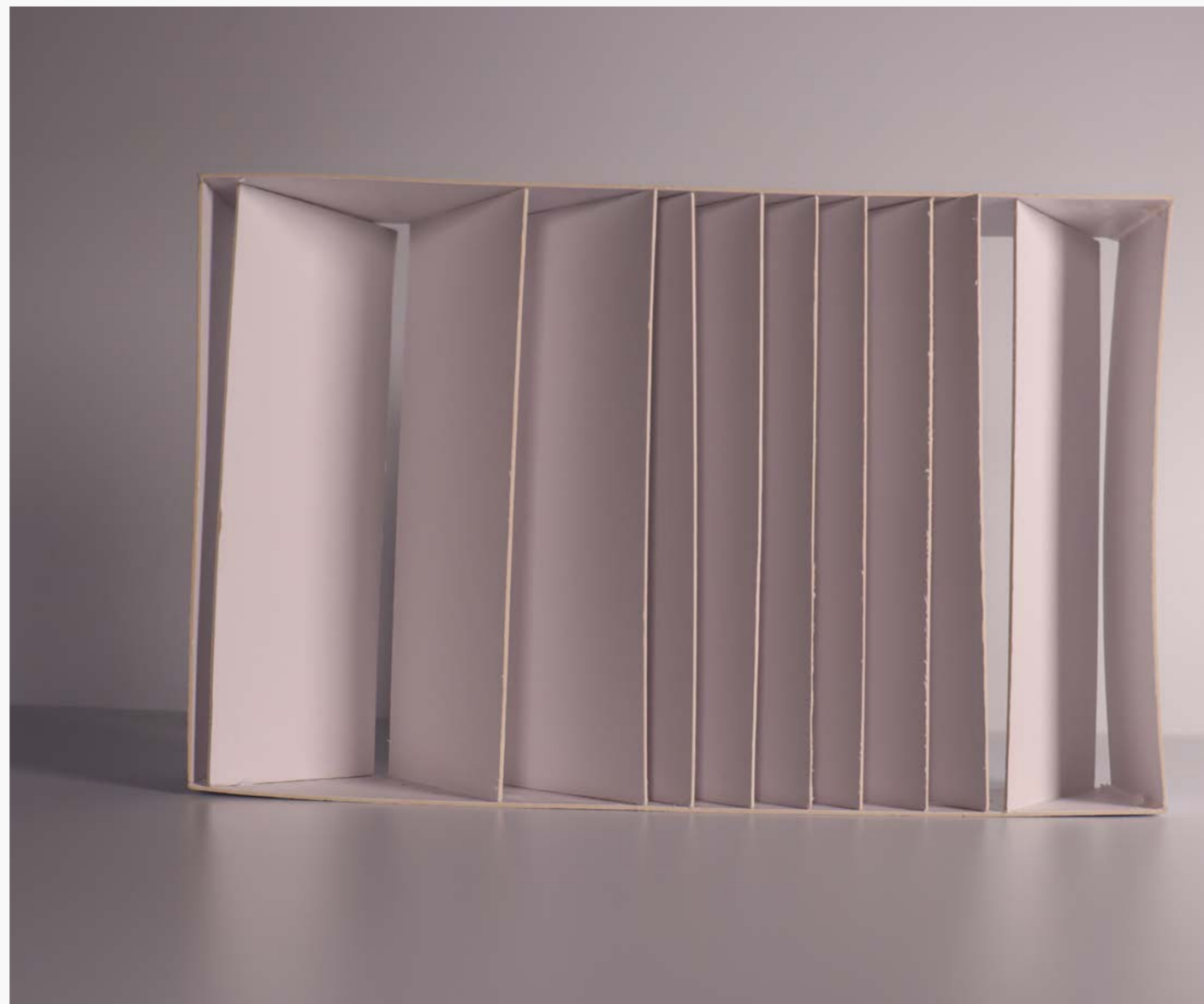
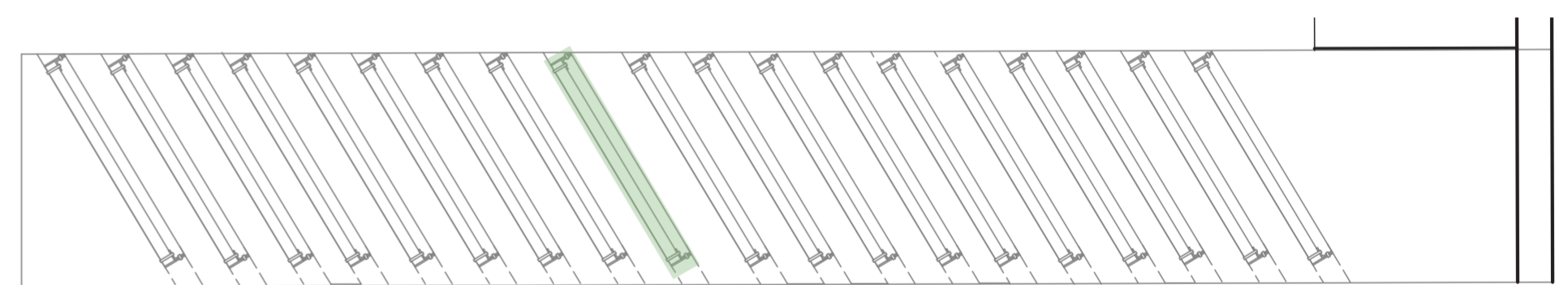
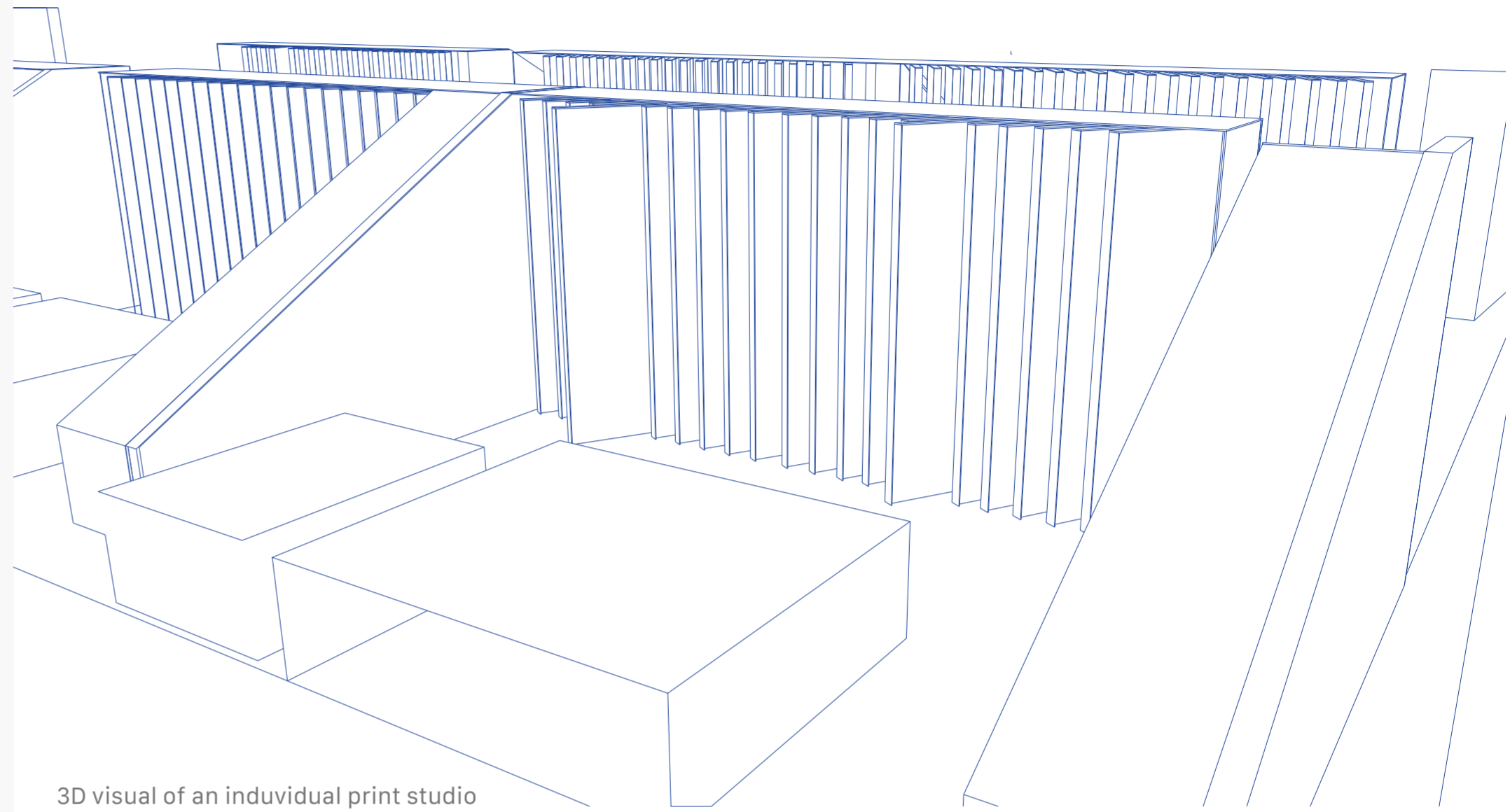
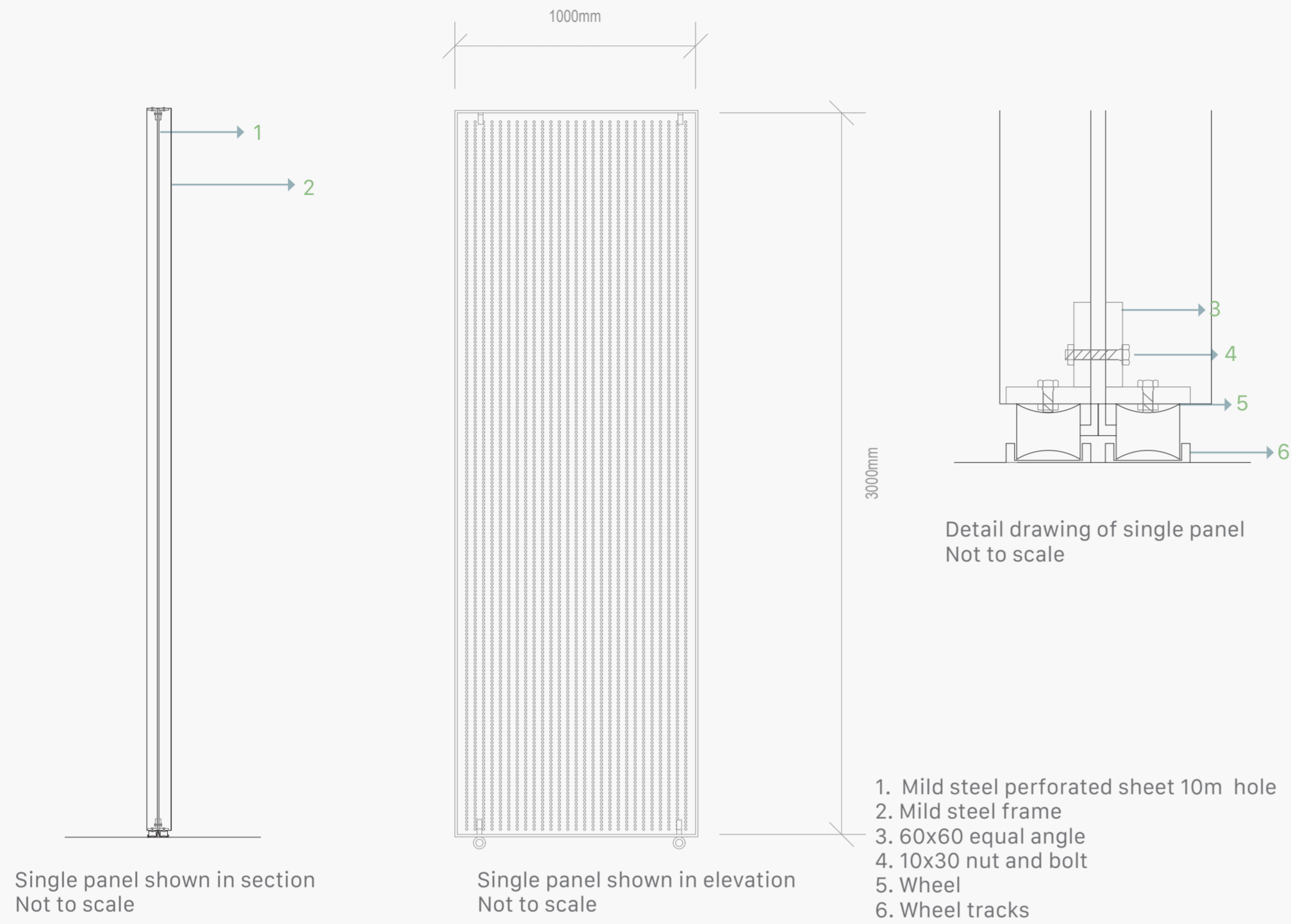


1. Entrance (via lift)
2. Gantry entrance
3. Toilets
4. Kitchenette
5. Print studio
6. Reception
7. Meeting Area
8. Fire exit

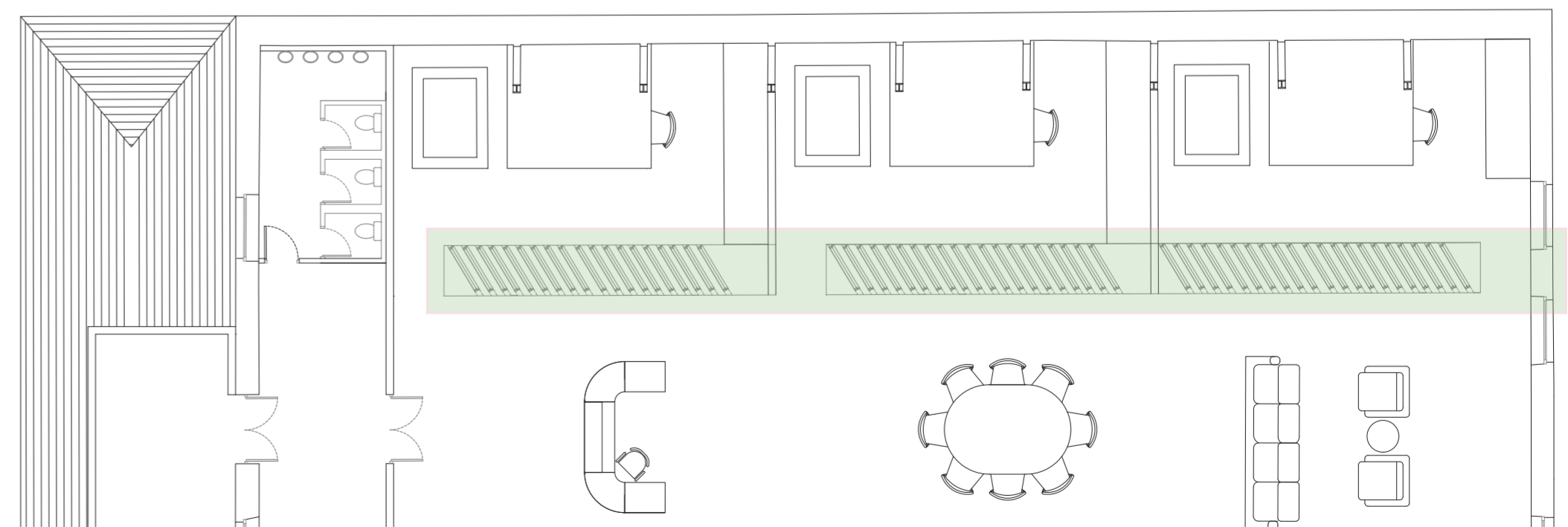


Print Storage detail

The undercover print studio is divided into 6 individual studios and a large central meeting space. The louvred print storage is used to divide the spaces. Each panel slides out and is to be used to hang prints using magnets.



Card model of print storage



1:50 Model

Acrylic and Card

