

A Pint of Normality

Jacob Folley

We are all getting older. Not just minute by minute and day by day, but as a species. As our technological and medical knowledge grows, so does our life expectancy. Whilst this is no doubt a blessing, this blessing does come with its consequences. A lack of housing, older retirement age, and the increased strain on the NHS and - possibly the most feared of all - our greatest killer: cancer.

The former Tetley brewery will once more become a beacon for the city. It will become a cancer rehabilitation centre and social hub, not only focusing on a transient community of recovering cancer patients from Leeds and beyond, but serving the wider community as a social and heritage site. To facilitate rehabilitation, the Tetley will house art therapy rooms (with a supporting gallery), a yoga studio and relaxation areas, along with social spaces to regain a sense of normality for people who've been without. These areas will be pub-like bar areas serving Tetley ale once more, although now low and alcohol free. This revival of one of Leeds's oldest and most famous companies signifies a key part of south Leeds's redevelopment. The on site greenhouse and brewery creating this low alcohol ale will create the permanent community of brewery workers and pub goers.

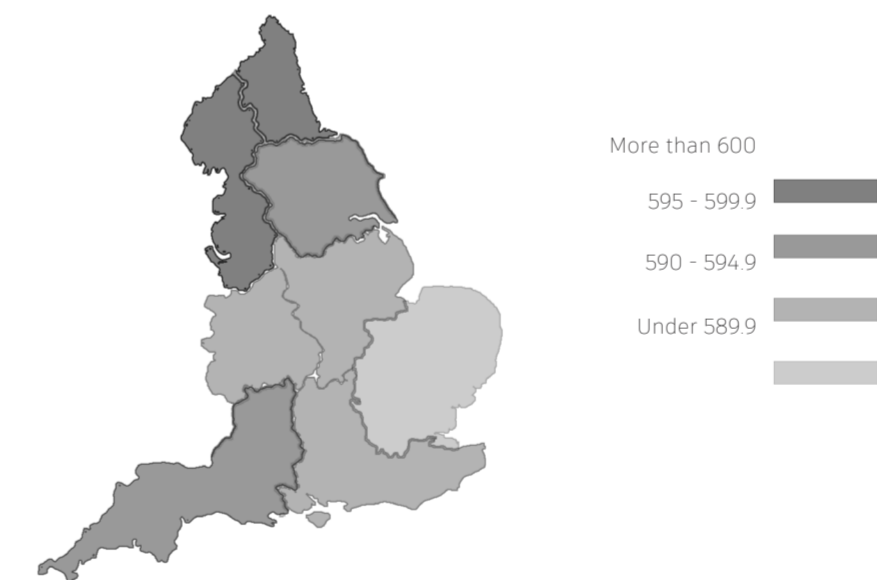
This design focuses on bringing together different programmes and communities through unexpected interactions, connecting people using multiple 'accidental' pathways, and exploring both the material and the immaterial corridors that can be used in design. By creating spaces and moments for interactions within the programmes, the participant's journey is made more interactive and enjoyable, mixing the worlds of cancer rehabilitation and everyday social interaction in a safe environment to normalise a health issue that is part of so many lives in modern society.



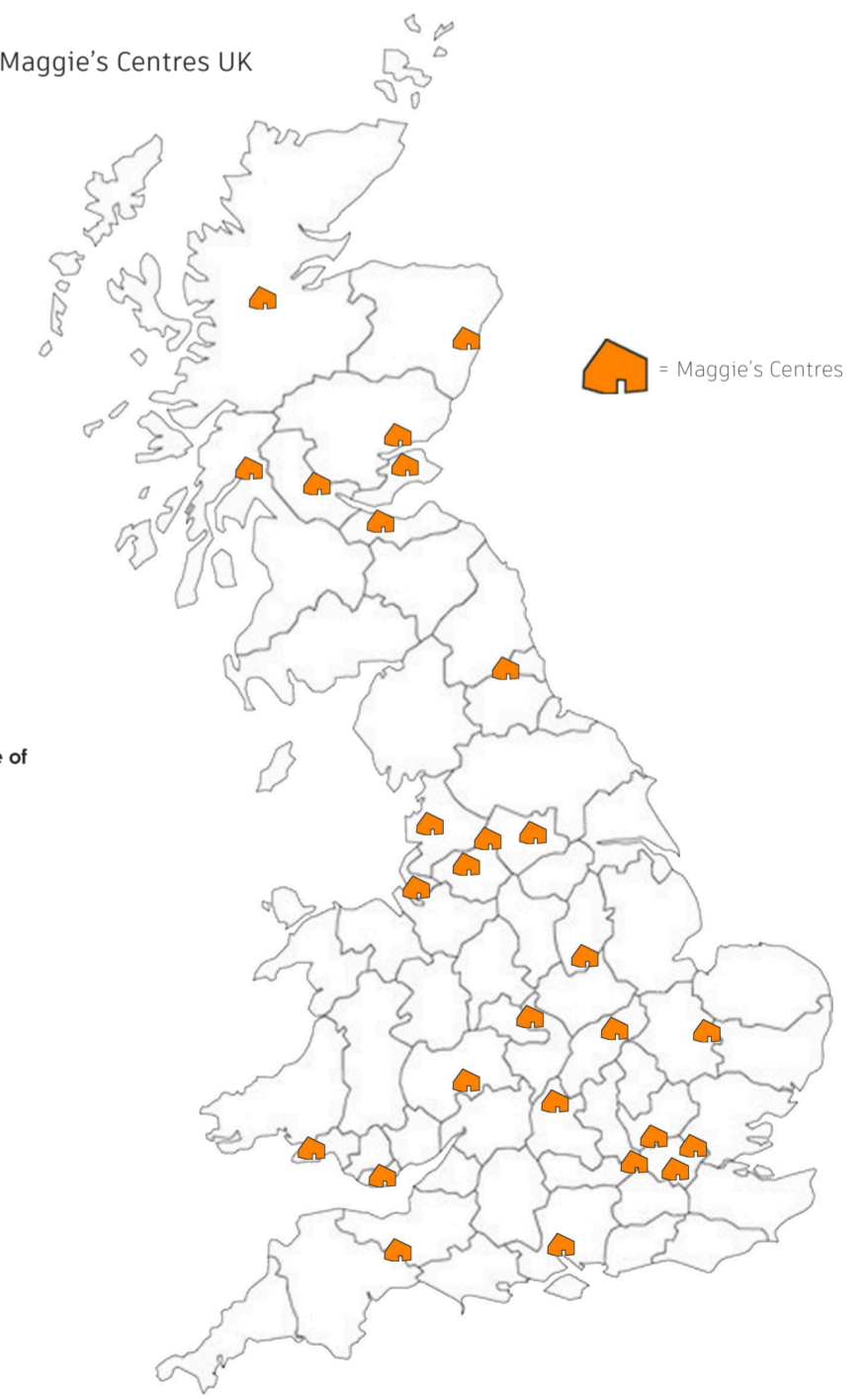
The Tetley is 200 years old this year, with its roots embedded deep within Leeds. Once supplying the county with jobs and beer, the Tetley remains the final building of its empire, with its current use of office and gallery space seeming wasteful of its heritage.

In Leeds, cancer is a large concern, with the county having one of the highest cancer rates in the UK. There are centres and charities around the country and world which deal with patients, one of the most famous of these being Maggie's Centres. These amazing facilities and the people running them offer incredible support, but rarely the opportunity to return to normality.

Cancer Rates in England per 100,000



Maggie's Centres UK



Binge Drinking in England

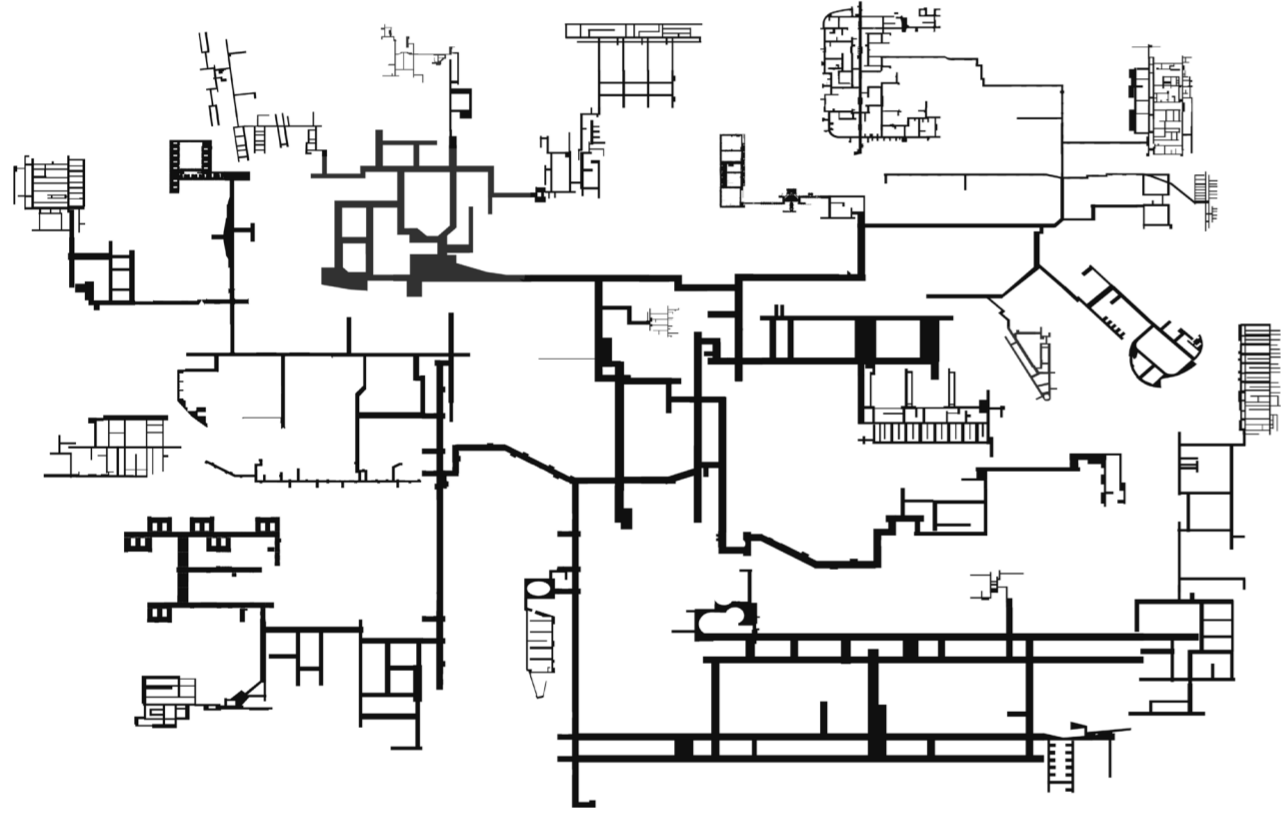


Exploring Material & Immaterial Corridors

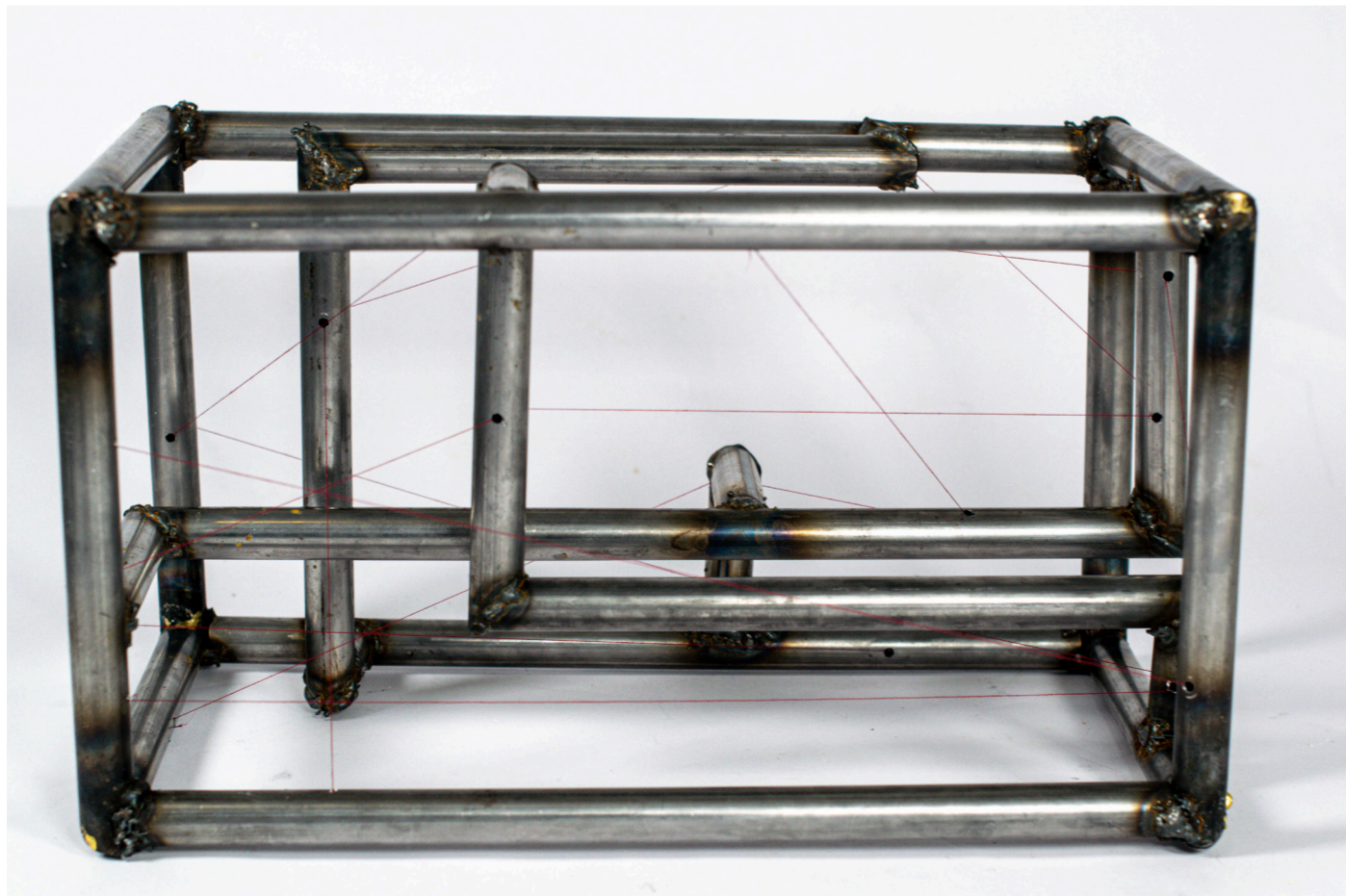
The physical corridor has many negative historical connotations, especially in a hospital context. Moving away from this, and turning the existing corridors into places of connection and interaction, the building also moves away from the clinical medical centres that the occupants are now rid of. The places where people interact are often unexpected, and happen where two spaces or circulations intersect. Creating these 'accidental' intersections meant create intertwining circulations, whilst retaining the privacy of the sensitive programmes.

Exploring not just the physical, but the immaterial corridors and methods that a building can be connected by was explored, sight and sound being the most successful. Using these you can connect users from different contrasting programmes to form relationships between users.

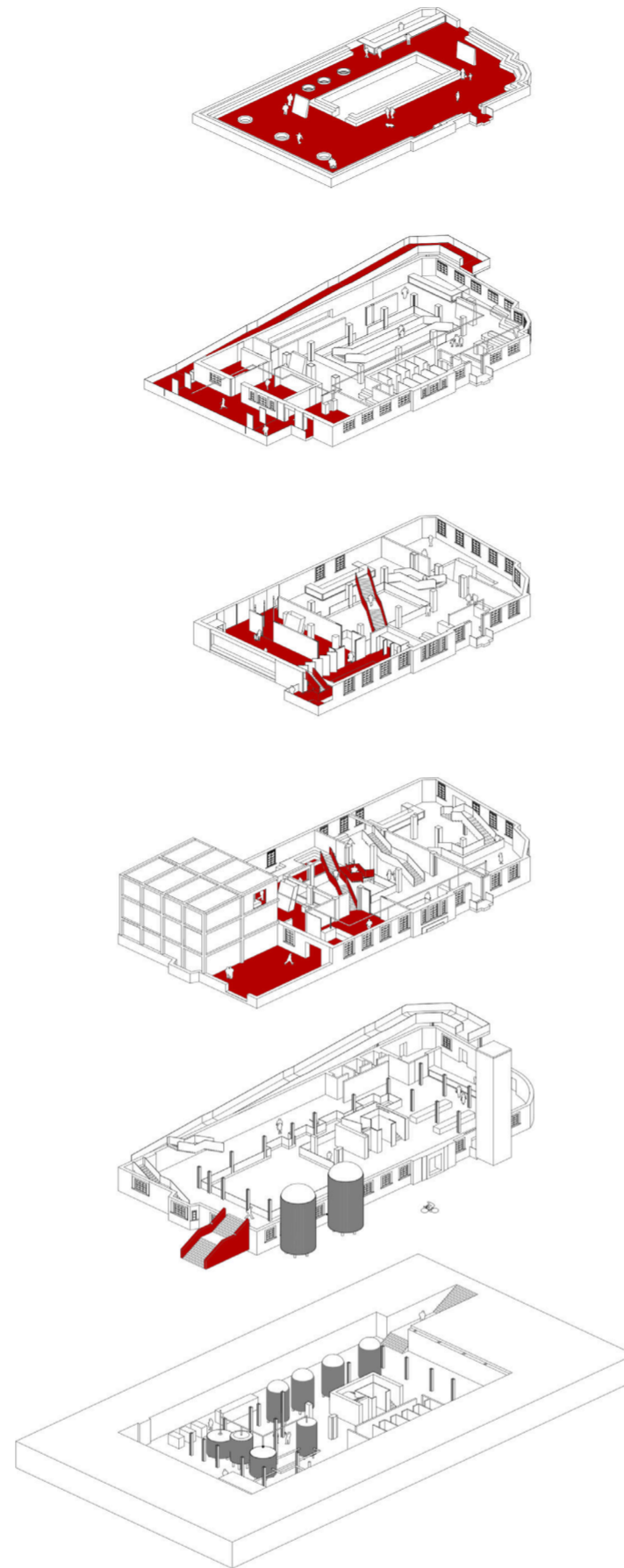
Concept Image



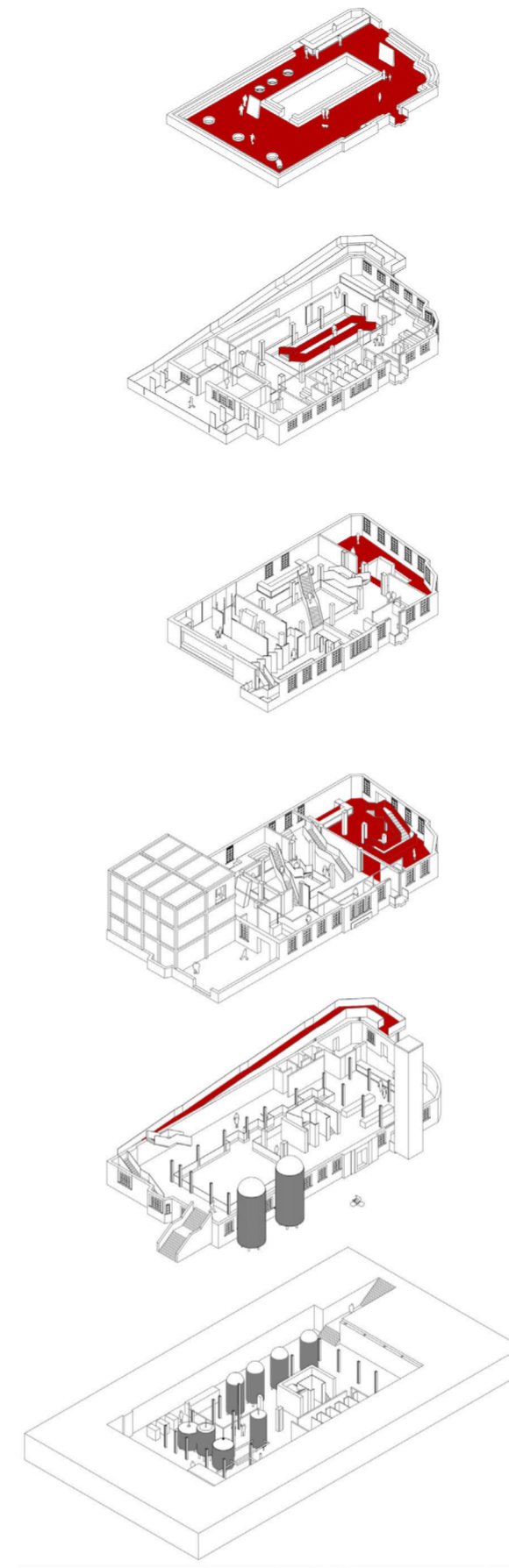
Concept Model



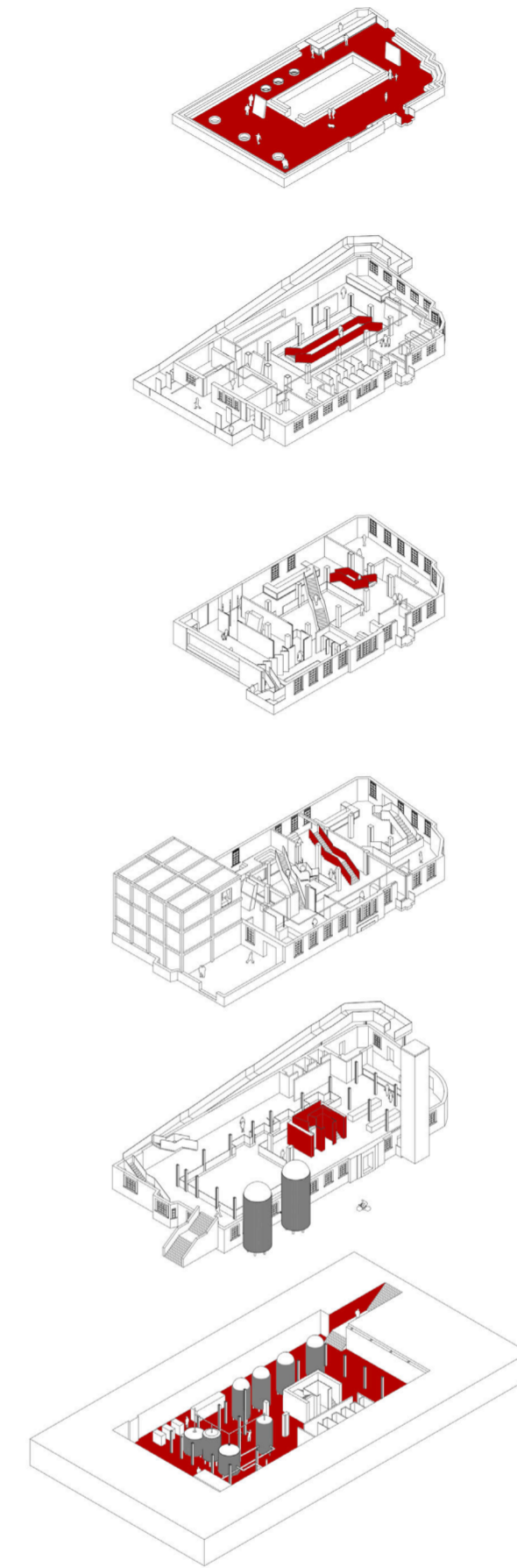
Cancer Rehabilitation User Circulation



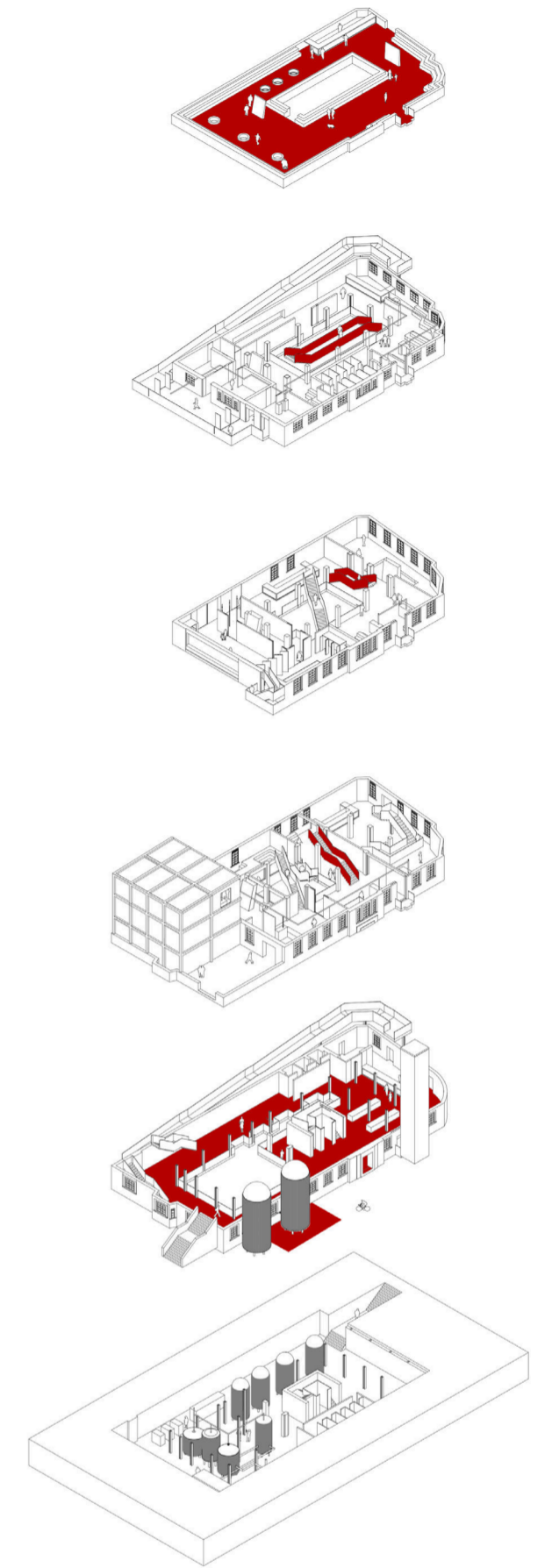
Gallery User Circulation



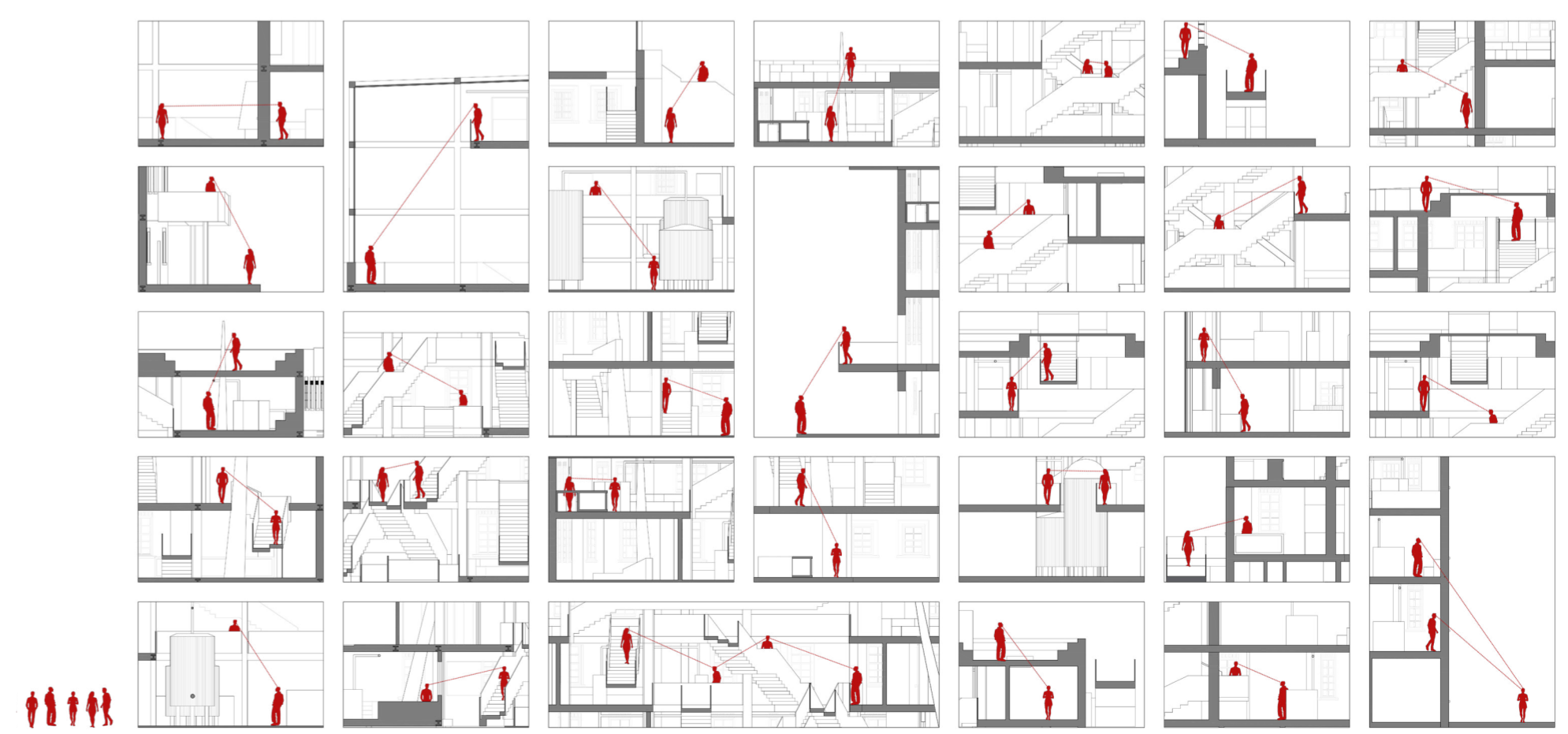
Brewery Worker Circulation



Brewery Tour Circulation



Immaterial Interactions



The Tetley Re-imagined

1 : 50 Model



Brewery - The brewery is in the basement of the building to accommodate the weight of the machinery with c30 concrete added. The space allows viewers from the floor above to observe the workings of the brewery and become an attraction in its own right.

Tasting Area - Situated at the end of the tour, and tasting area promotes communal sitting and interaction, with extra natural light given through the light shaft.

Greenhouse - The greenhouse is built to imitate the conditions of Yakima Valley, Washington, to grow hops for the brewery by recycling the steam produced in the brewing process. Users can tour the area to pick hops and take a part in the process for fun or as a therapeutic exercise.

Gallery - To display the work created in art therapy, a gallery space is included to raise awareness of cancer and its psychological effects.

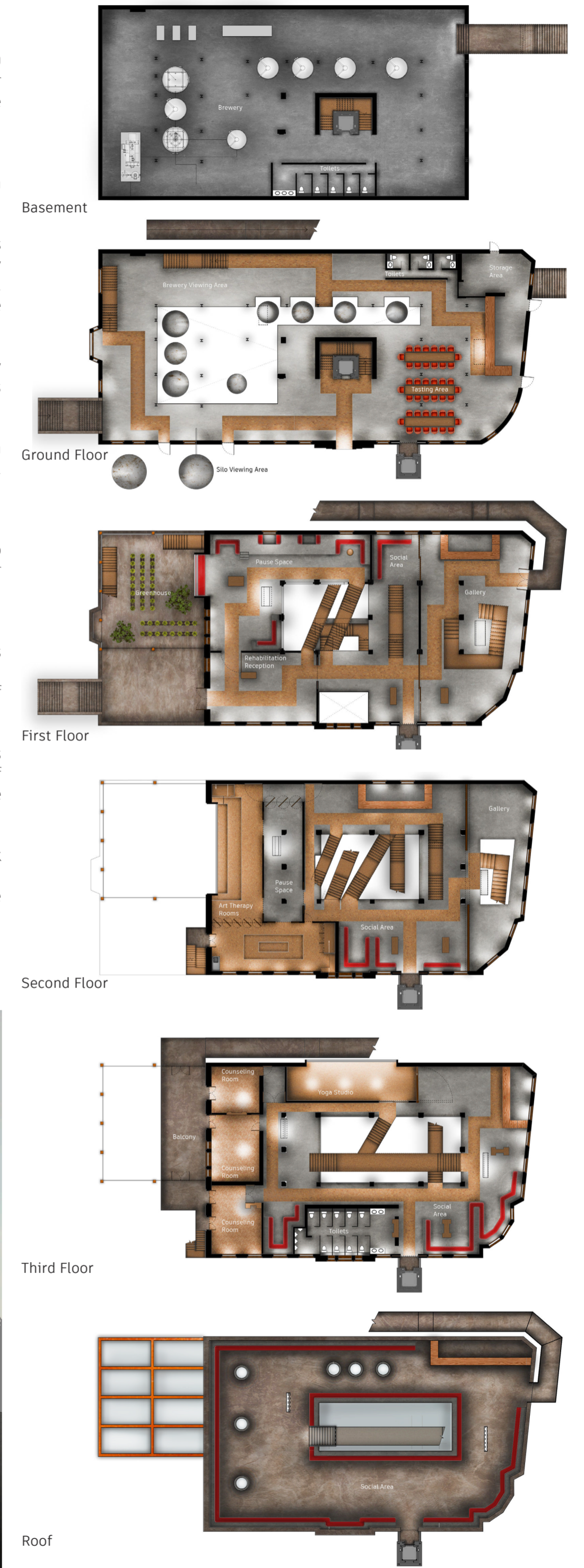
Pause Space - Two spaces are purposed for giving the users a pause and a moment to take a breathe before the next space. These areas are placed next to potentially overwhelming moments such as the entrance and the therapy rooms.

Art Therapy - Split into two rooms with the option to turn into one, the cork flooring within are stepped towards the edge or centre to give the users a focal point to their artwork, with an intruding window to bring the greenhouse into the building.

Counselling Rooms - There are three counselling rooms for the different levels of confidence of the users, all with skylights and the homely original timber panelled floor of the Tetley.

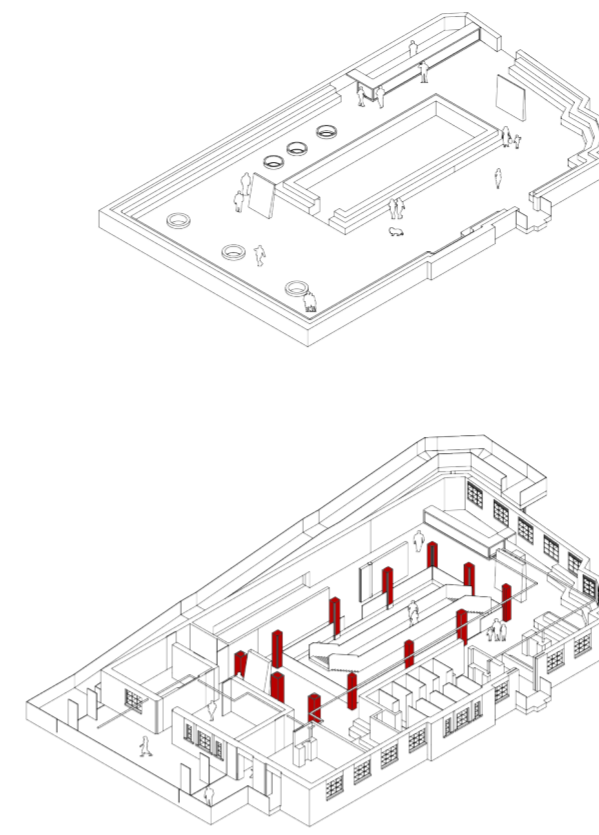
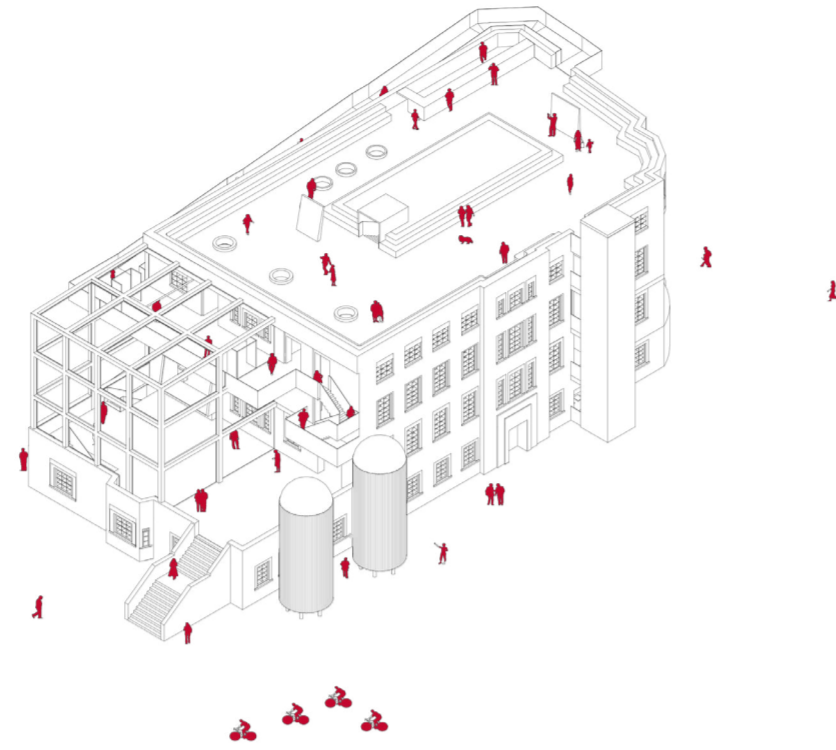
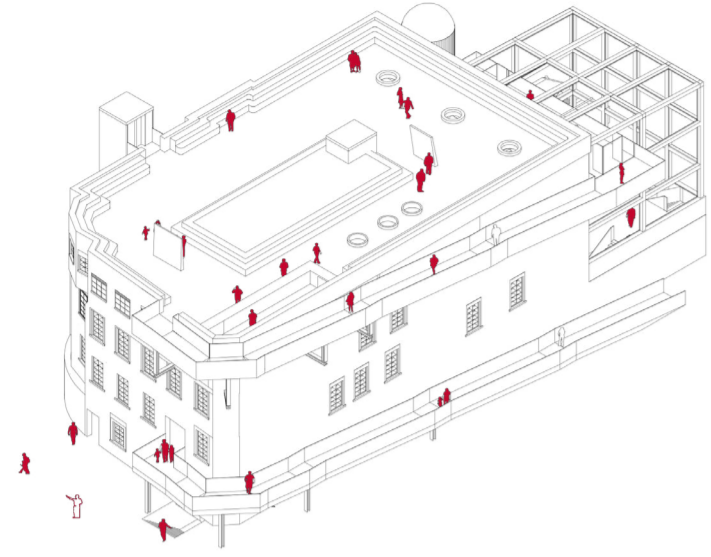
Yoga Studio - The soft cork flooring of the yoga room acts as a perfect surface for the activity, and the southern wall of the space can rotate out, opening the space to the rest of the building.

Roof Top - The different circulations of the building work up until climaxing on the roof, with a view all over south Leeds for the communities to socialise and interact with one another with a drink.



Spatial Systems

Exposed Structure

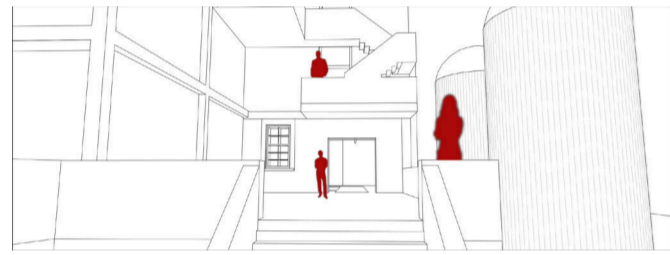


Pause Space

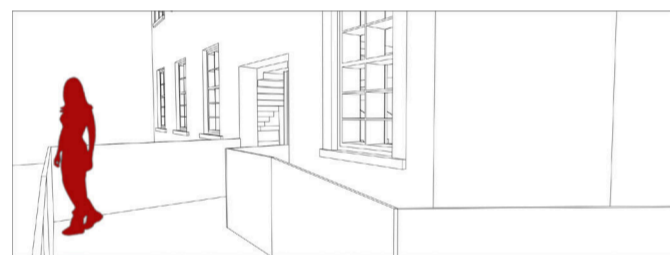


Entrances

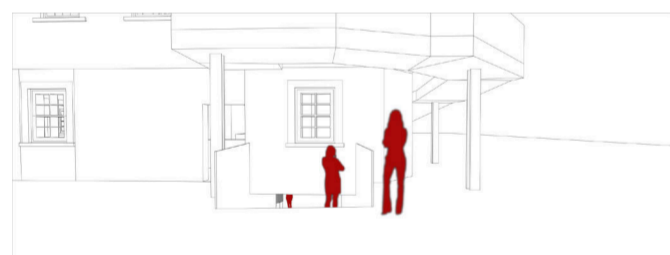
Rehabilitation



Gallery



Brewery

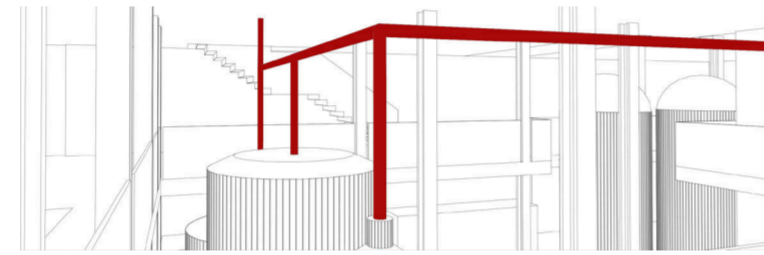


Main

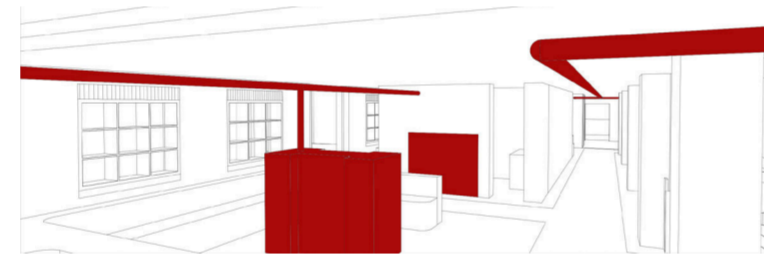


Steam Corridor

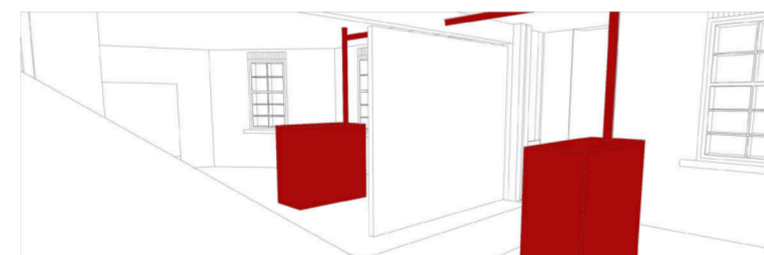
From the brewery equipment



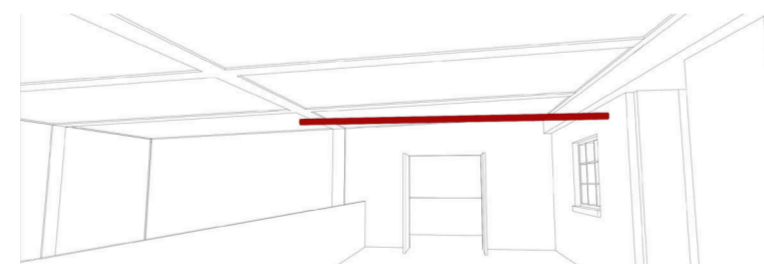
To fireplaces



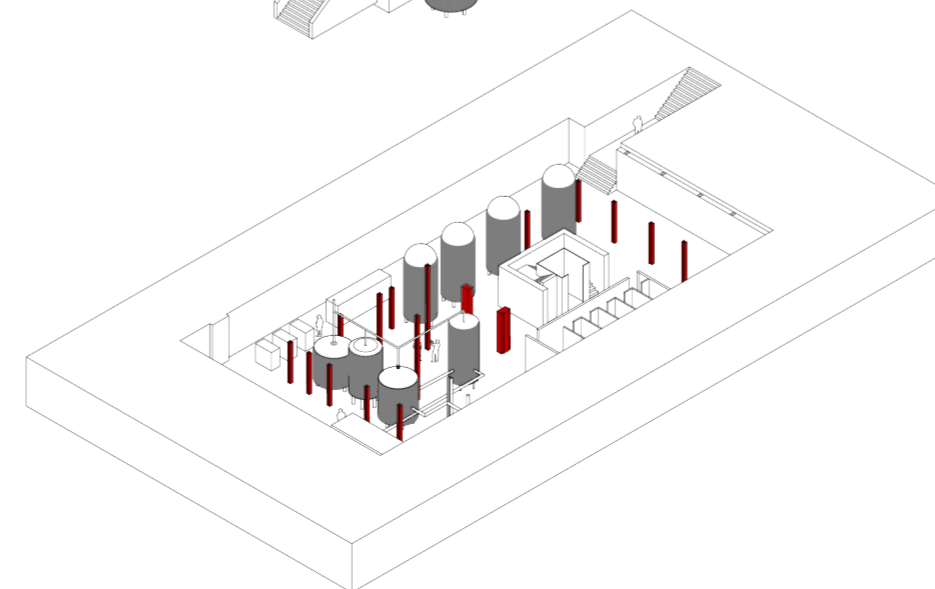
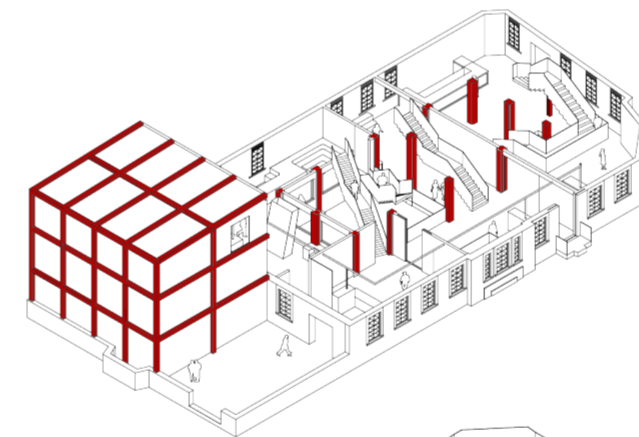
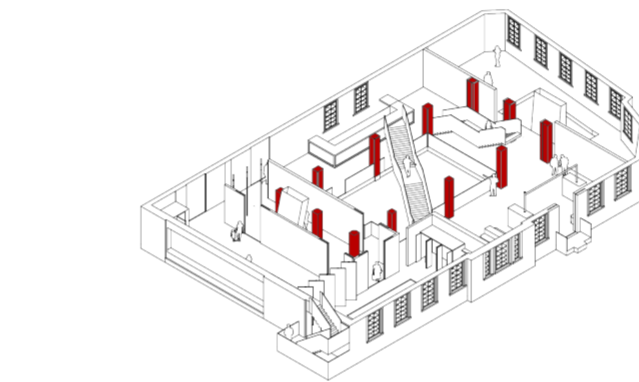
Through the building through pipes



Into the greenhouse



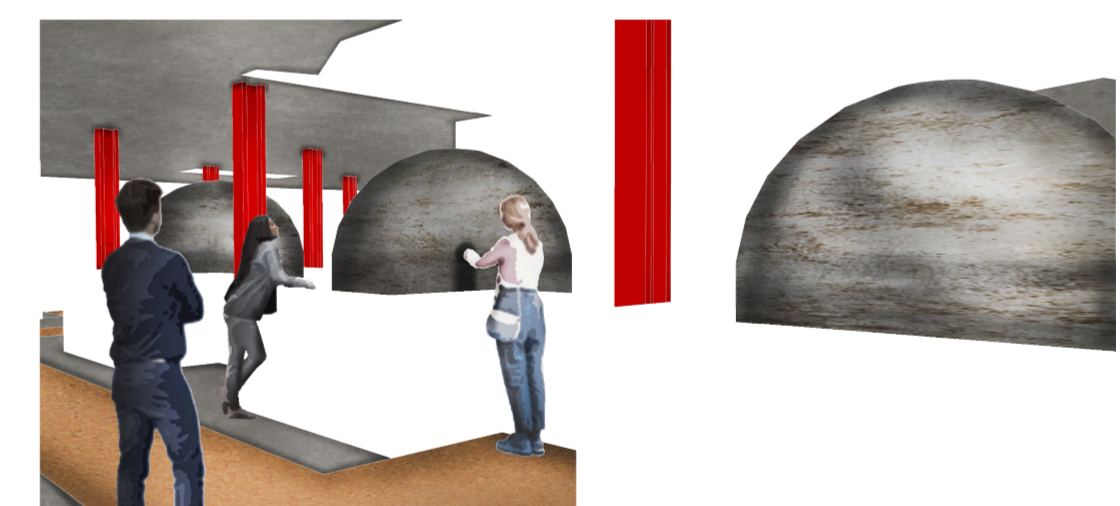
Exposed Structure



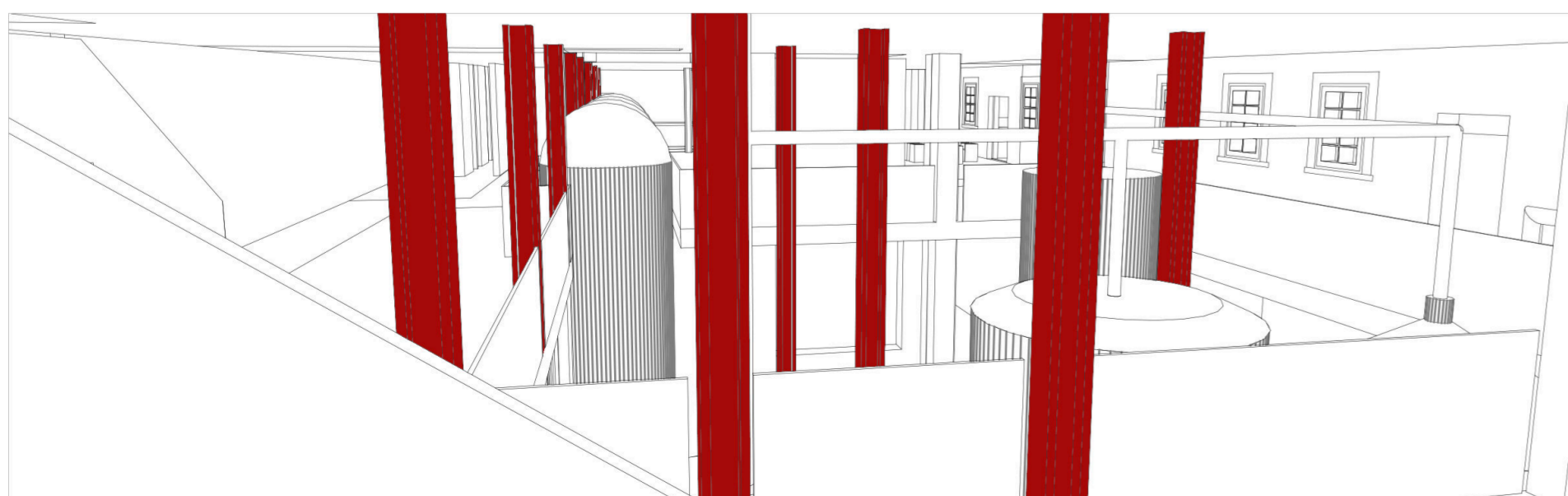
Window Seat



Brewery Interactions

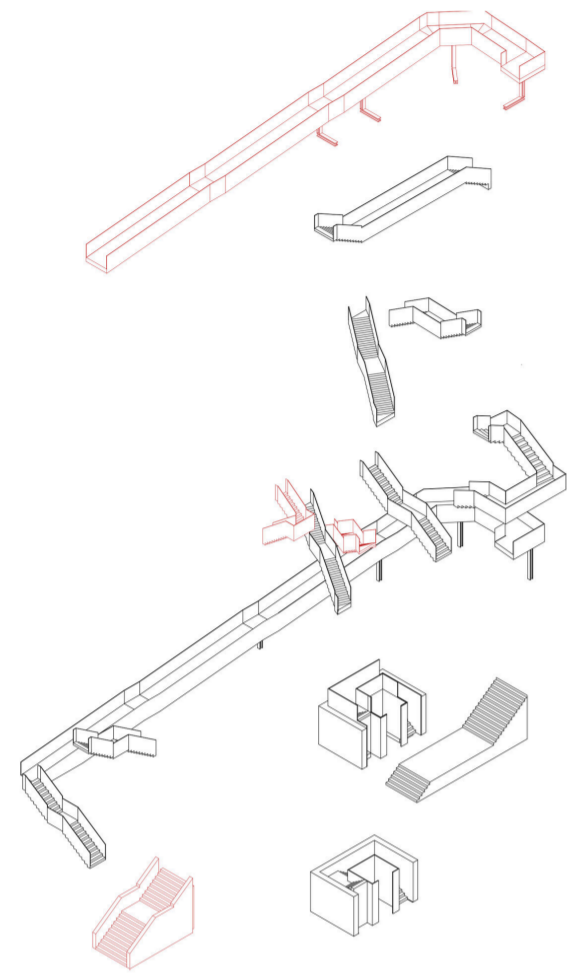


Greenhouse Interactions

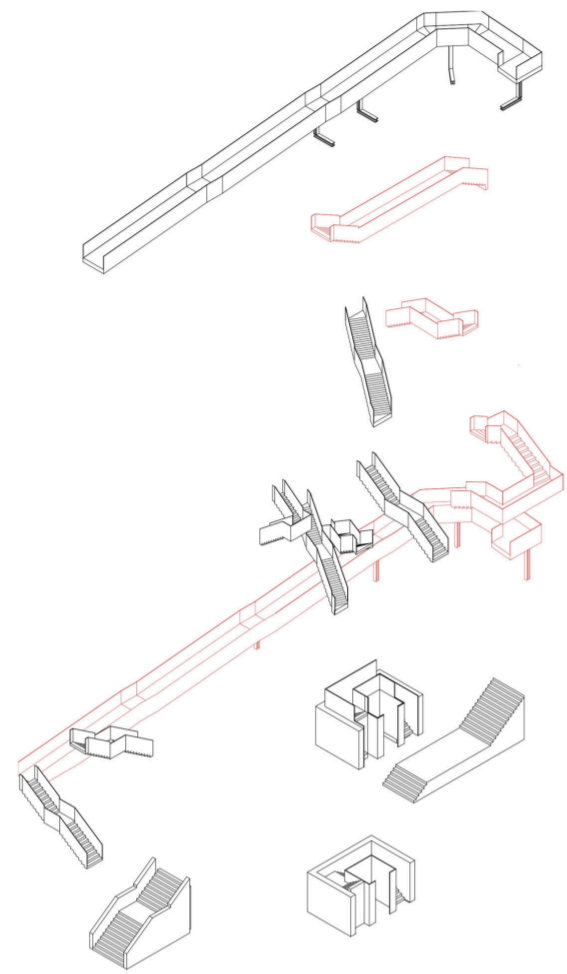


Connecting Spaces and People

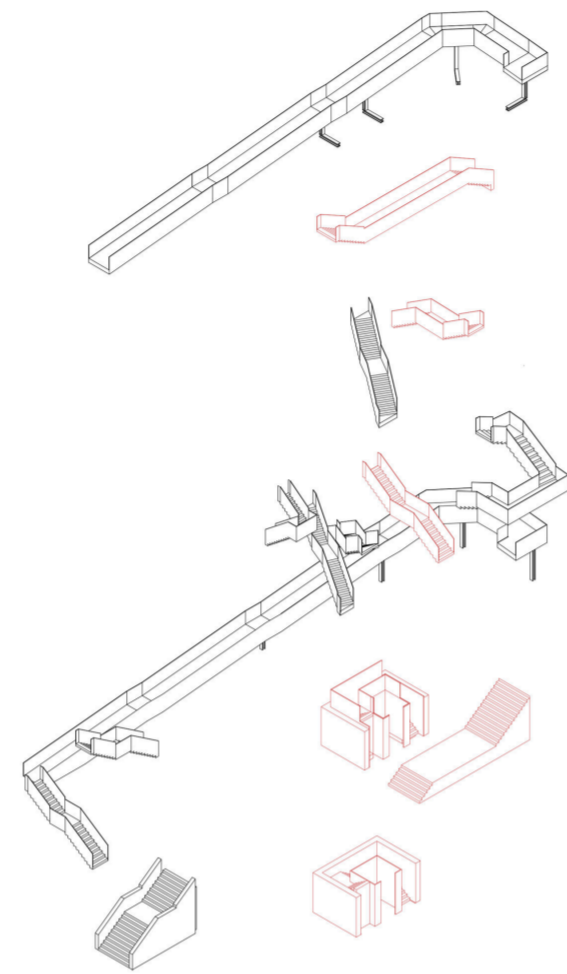
Circulations through Staircases
Rehabilitation



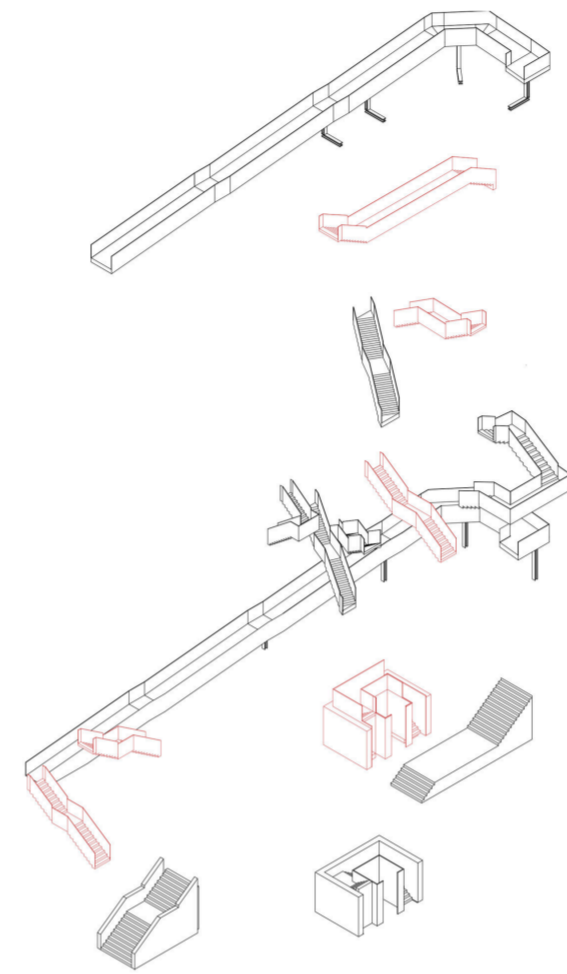
Gallery



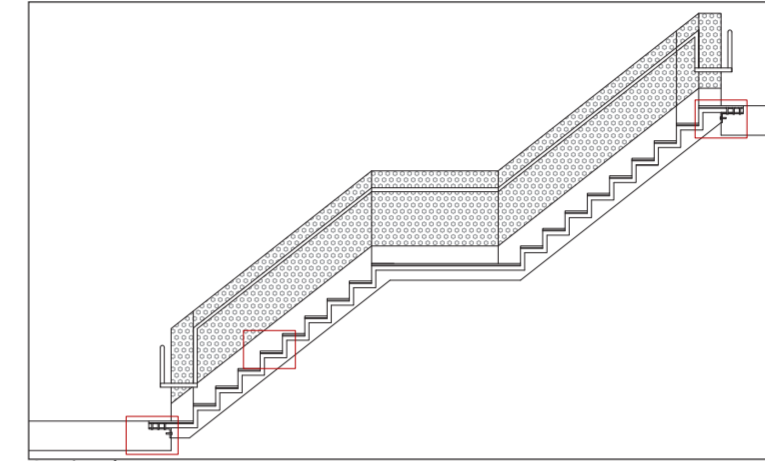
Brewery



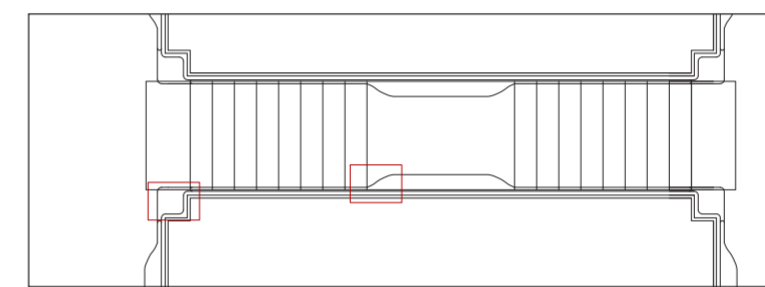
Brewery Tour



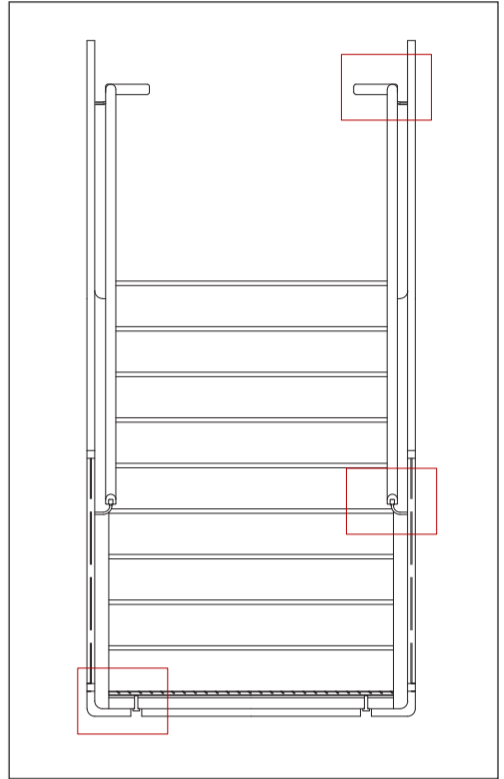
Stair Long Section



Stair Plan



Stair Short Section



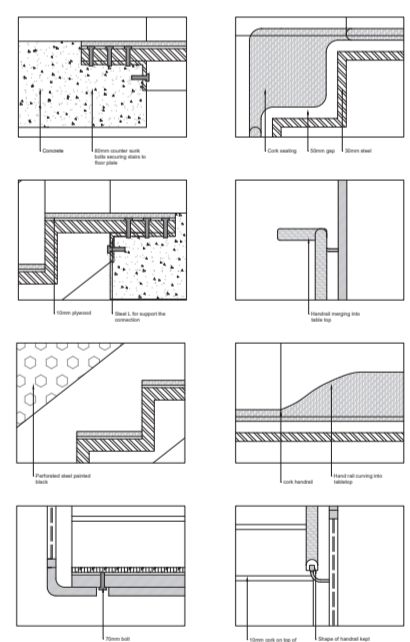
1:1 Cork Handrail



Using a system of winding staircases to connect the spaces and programmes, the different paths cross one another, and create unexpected interactions between the communities. The majority of the stairways have an extended bridge separating the stairs, giving the area a stretch of social space to stop and interact in.

The handrail of these stairs flattens towards the middle, and turns into tables, allowing a user to place a drink down and socialise in the area. For the handrail, the cork is set so that the side closest is harder than the other, encouraging the user to feel round to the soft cork on the outside. This forces the users to lean over, and interact with other spaces and communities.

Stair Details



Social Atrium

