

# the Craft hall



The coronavirus pandemic has made it increasingly difficult for collaboration between designers and independent crafts have taken a back seat, with closed studios and a stay at home order in place, designers have been forced to think outside the box to keep the creative teamwork thriving in limited workspaces. Subsequently, the pandemic has forcibly placed people of all different professions into one household bubble. Myself and friends within the Leeds Student Community have been unable to collaborate with

course mates; in order to keep the studio collaboration and feedback alive, we took it upon ourselves to collaborate within our own lockdown bubbles. By collaborating with cross disciplinary students from Fashion, Textiles and Architecture courses from The University of Leeds, Leeds School of Art and Leeds Beckett, The Craft Hall creates a platform for graduates to improve their careers instead of further education or working in house. The building offers the opportunity for individuals to

become independent designers and for companies to scout out new talent. In turn, this encourages the celebration of local craftsmen, bringing crafts back to life, and creating unique and interesting individual products. Located in the heart of Headingley, the creative space is situated in direct accessibility from all of the student areas in Leeds. Furthermore, the building stands out with its strong personality of education and community and networking, in turn encouraging collaboration.

emily

Emily Adams  
Interior Architecture &  
Design  
The Elinor Lupton Centre



maria

Maria Hodgson  
Fashion Design Student  
Leeds Arts University



meera

Meera Baker  
Textile Design Student  
University of Leeds



katie

Katie Payne  
Architecture Student  
Leeds Beckett University





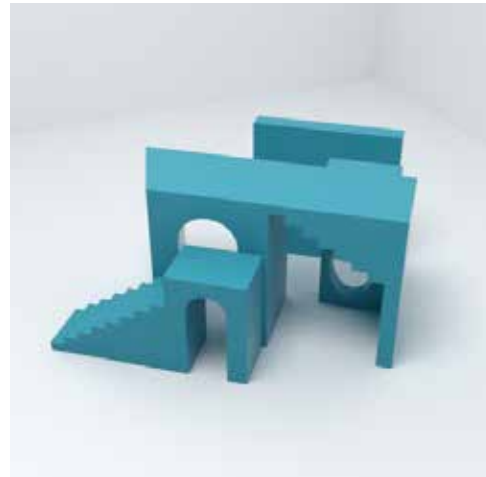
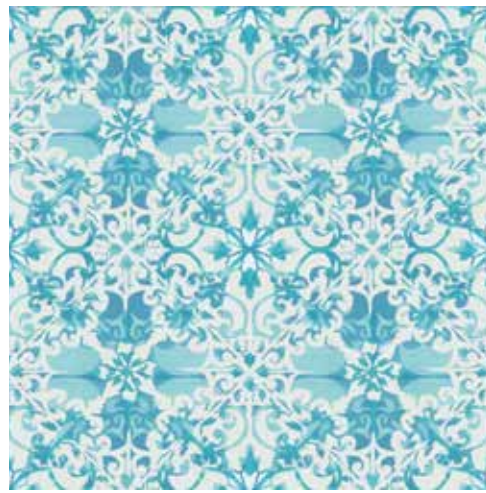


Working with a fashion design student encouraged the exploration of fluid forms within a spatial context. We analysed the way fabric moves as a material. The idea of movement encouraged further thinking on how the temporary architecture is used, which highlighted possibilities for moveable architecture within the Craft Hall.



Maria Hodgson, Fashion Design Student, Leeds Arts University



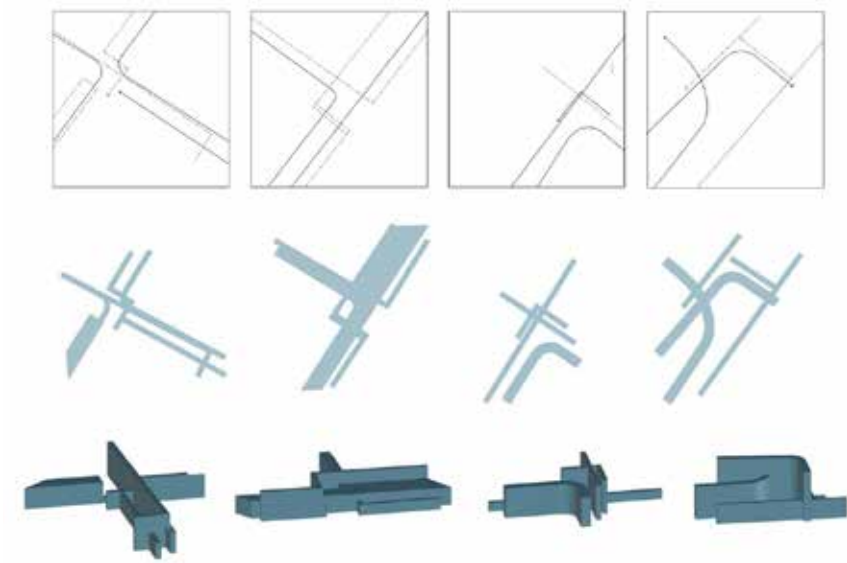
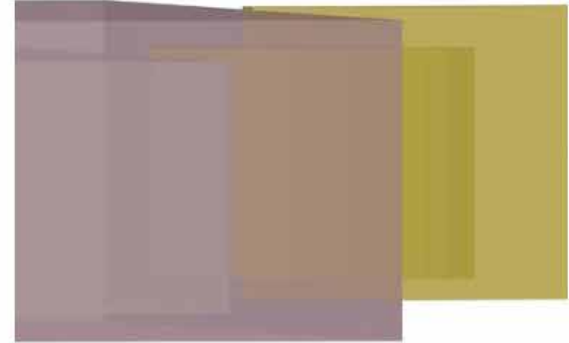
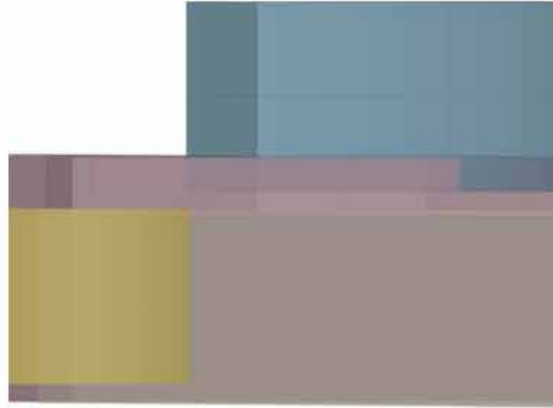
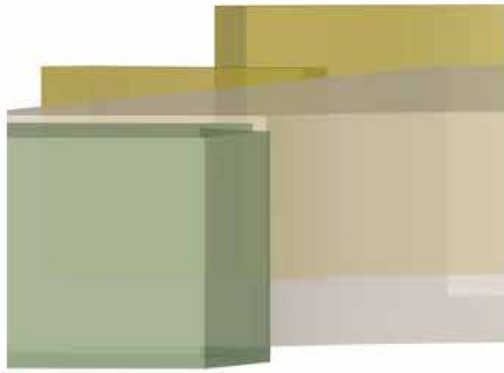
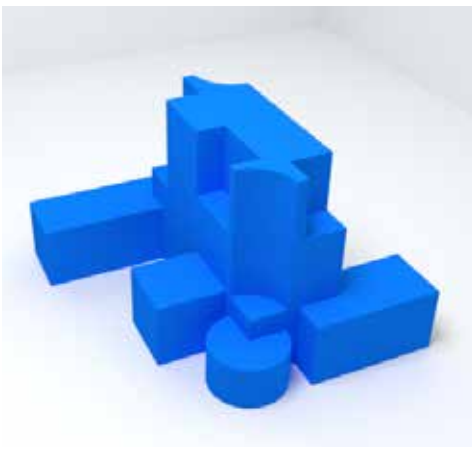


Collaborating with a textiles student pushed both of our thinking. Meera works generally with flat two dimensional prints, whereas within spatial design we use a lot more three dimensional thinking. It was interesting to encourage eachother to think outside our comfort zones and work both 2D and 3D.



Meera Baker, Textile Design Student, University of Leeds





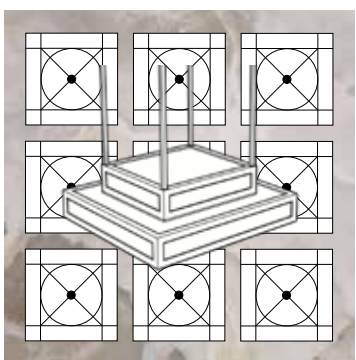
As an Architecture student, Katherine also works spatially. However, she concentrates her work more distinctly on creating new forms from the environment rather than an existing building. From borrowing shapes in the surrounding areas of her site in Los Angeles, we were able to create an abstract structure for her Pop Up exhibiton.



katherine payne, architecture student, leeds beckett university



# the networking bar



The rooftop networking bar gives graduates an opportunity to network and collaborate to help each other reach their potential. It is located at the highest point of the building to encourage users to have their head in the clouds when thinking and discussing creative projects.