

SUSTAINABILITY AT THE COAL FACE; BELOW SURFACE LEVEL



IN BETWEEN THE LAYERS //



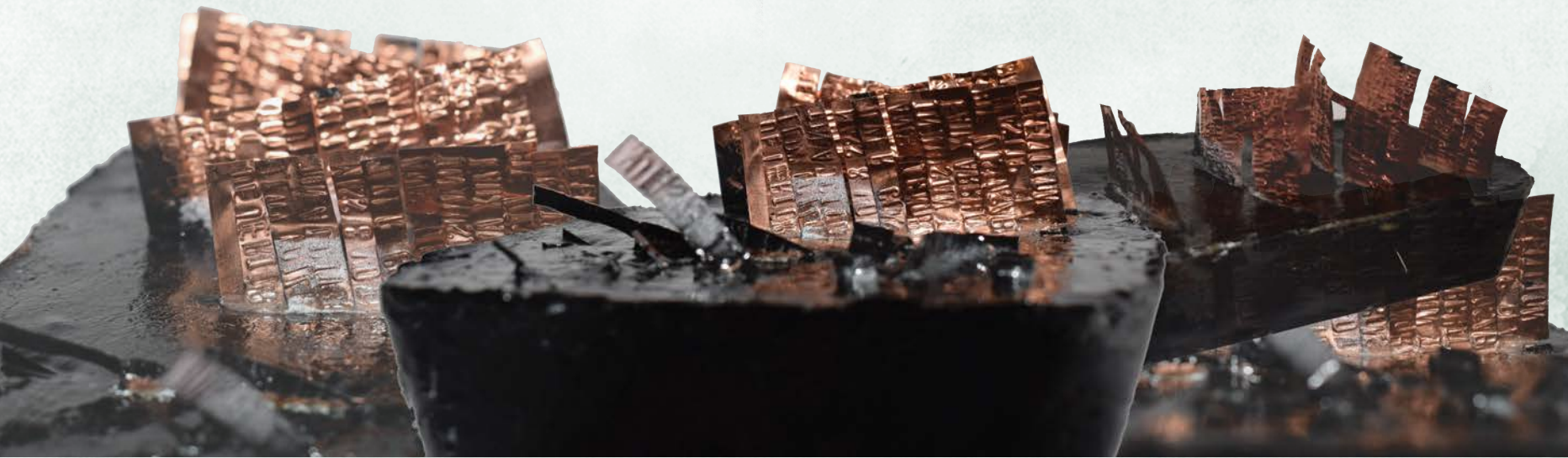
A three piece exploration of the site, looking deeper at voids as a concept.

TWO SIDES OF THE SAME COIN //

Designed to represent the two sides of the brief, the site history and environmentalism. Representing the control the miner owners had over the miners as well as the blightsightedness of people towards the damage humans have implemented onto the environment



ABSTRACT EXPLORATION OF THE SPACES



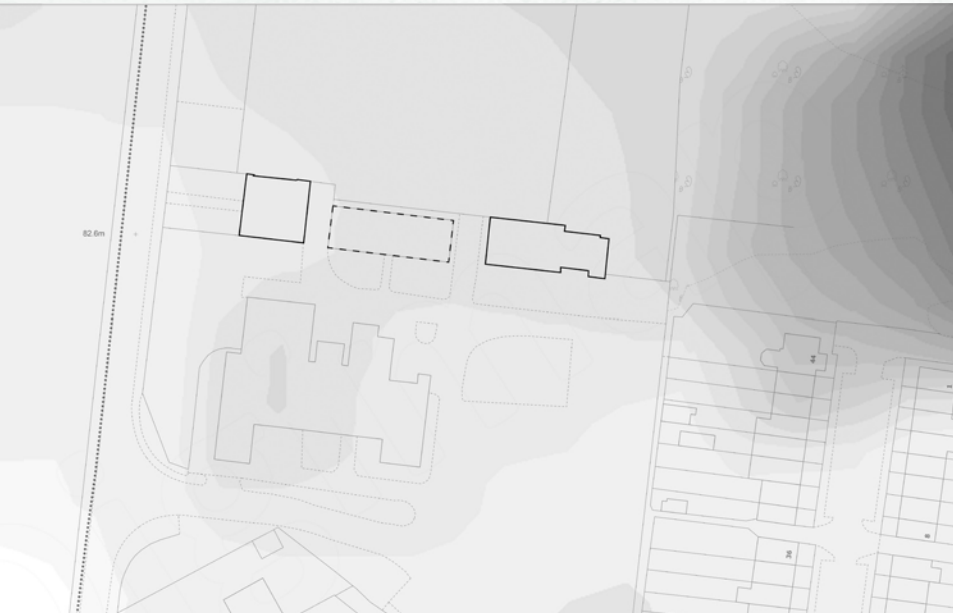
UNEARTHING THE FORGOTTEN // A Project manifesto addressing ignorance towards the environment.

This project seeks to address the current climate emergency through the use of an activism centre. It has been made clear that now more than ever, it is important for sustainability to be a priority for the global population. Every year more pollutants are entering our atmosphere and contributing to issues like climate change and global warming. These pollutants are not only impacting the health of our planet, but also the living organisms inhabiting it, including humans. Future generations rely on people and businesses making a conscious switch and supporting sustainable initiatives.

Ledston Luck, a disused colliery in a town not far from Leeds, is a perfect site for this project with strong links to activism, as well as collieries playing a large part of the production of greenhouse gasses. In 1984, miners around the country held a year long strike to oppose job losses after 20 mine closures. This brief is enhanced through the concept of turning a pollutant into something that should benefit the environment as a whole, to further this point, coal is well known for releasing large amounts of carbon when burned, however it also can be used to purify water, this illustrates the aim of the activism centre, from pollutant to purification.

The activism centre will draw a focus on what's going on around the world, using immersive exhibitions to highlight the harsh reality the planet is enduring. The exhibitions will be located underground, paying homage to the history of mining, and will each represent one of the four elements and the coinciding pollutants. The aim is to create awareness and educate people, and ignite a passion in the population, to make a difference. The centre will also include an area for business owners to meet, and guide them to sustainably and locally source, eventually contributing to a closed loop system. Inspired by Daniel Libeskind's Jewish museum, the spaces will evoke discomfort, and uncertainty. Using cold, hard materials, like metals and concrete, contributes to this atmosphere and creates an echo within the space. The journey of the site is a cyclical circulation, and represents the journey of sustainability, using different atmospheres, and lighting to represent each stage.

The existing site has a strong link to mass and void, a theme which carried this project through to the final stages. The design highlights these voids, keeping a lot of the existing features to remain true to the history of the site and respect the past that lead us here. The centre building will be demolished and the bricks used to create a viewing tower, other materiality used in the design is thoroughly considered with the aim of being as sustainable as possible. This materiality includes fly ash concrete, and recycled copper and corten steel. Going underground can be especially wasteful as contaminated soil often is directed to landfills, however this project uses the soil to form the landscape, and trees that thrive in high acid environments will be used to purify the soil.



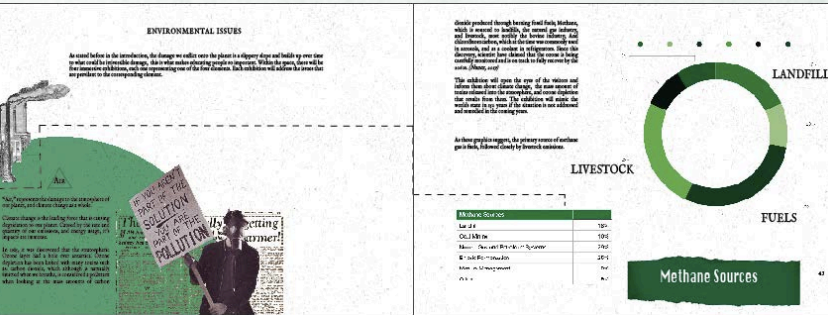
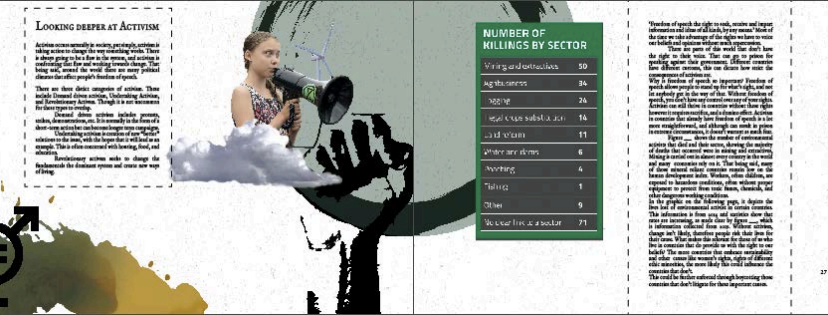
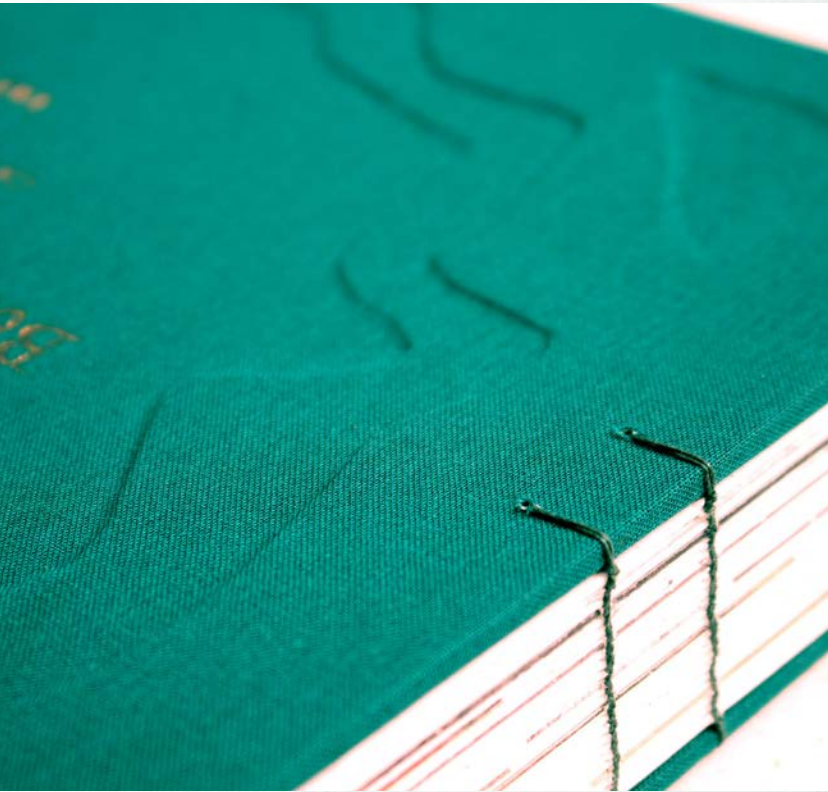
TOPOGRAPHIC MAP

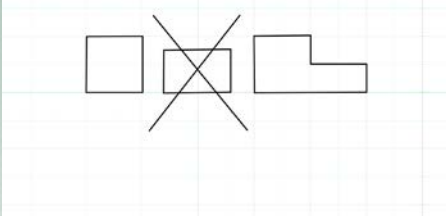
- Demolished building
- Activism Centre



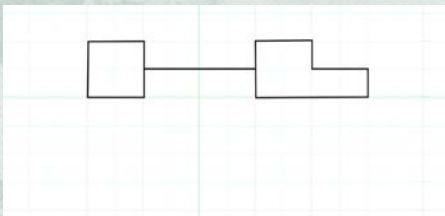
BELOW SURFACE LEVEL

RESEARCH REPORT

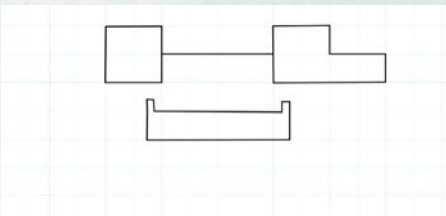




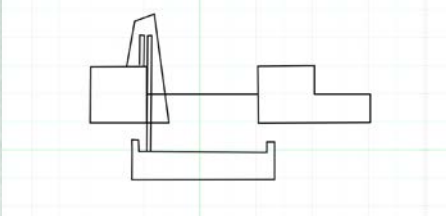
1. DISSASSEMBLE



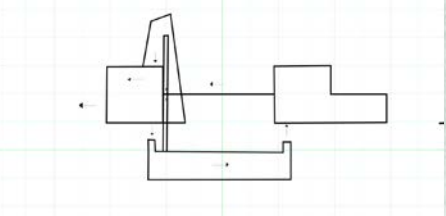
2. CONNECT



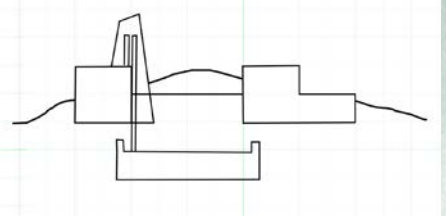
3. UNDERMINE



4. RE-LEARN

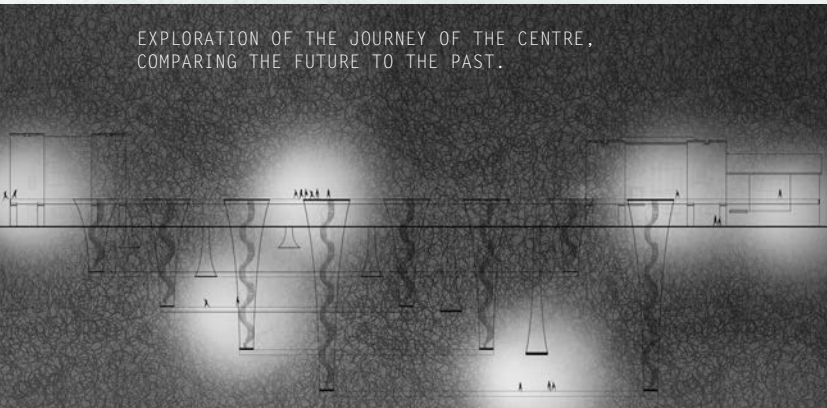
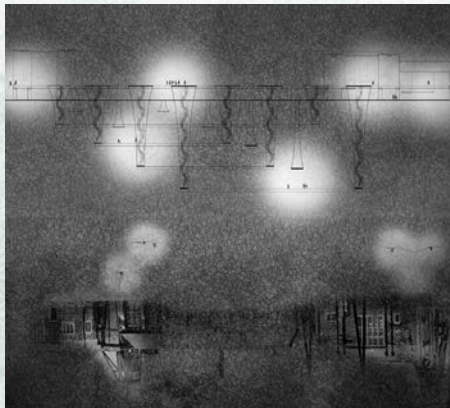
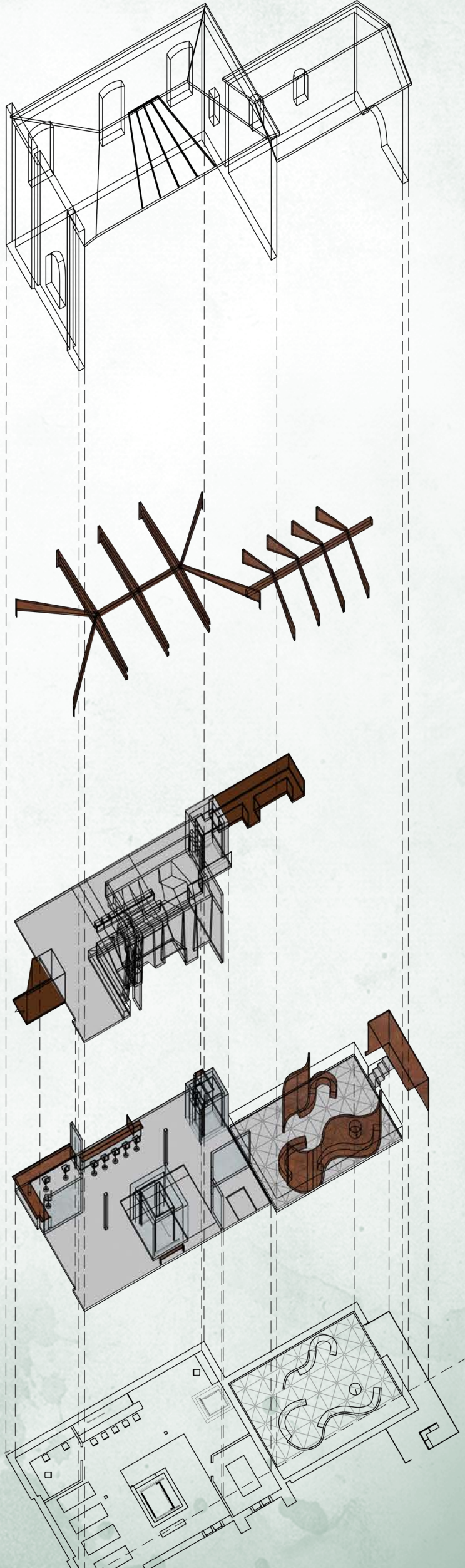
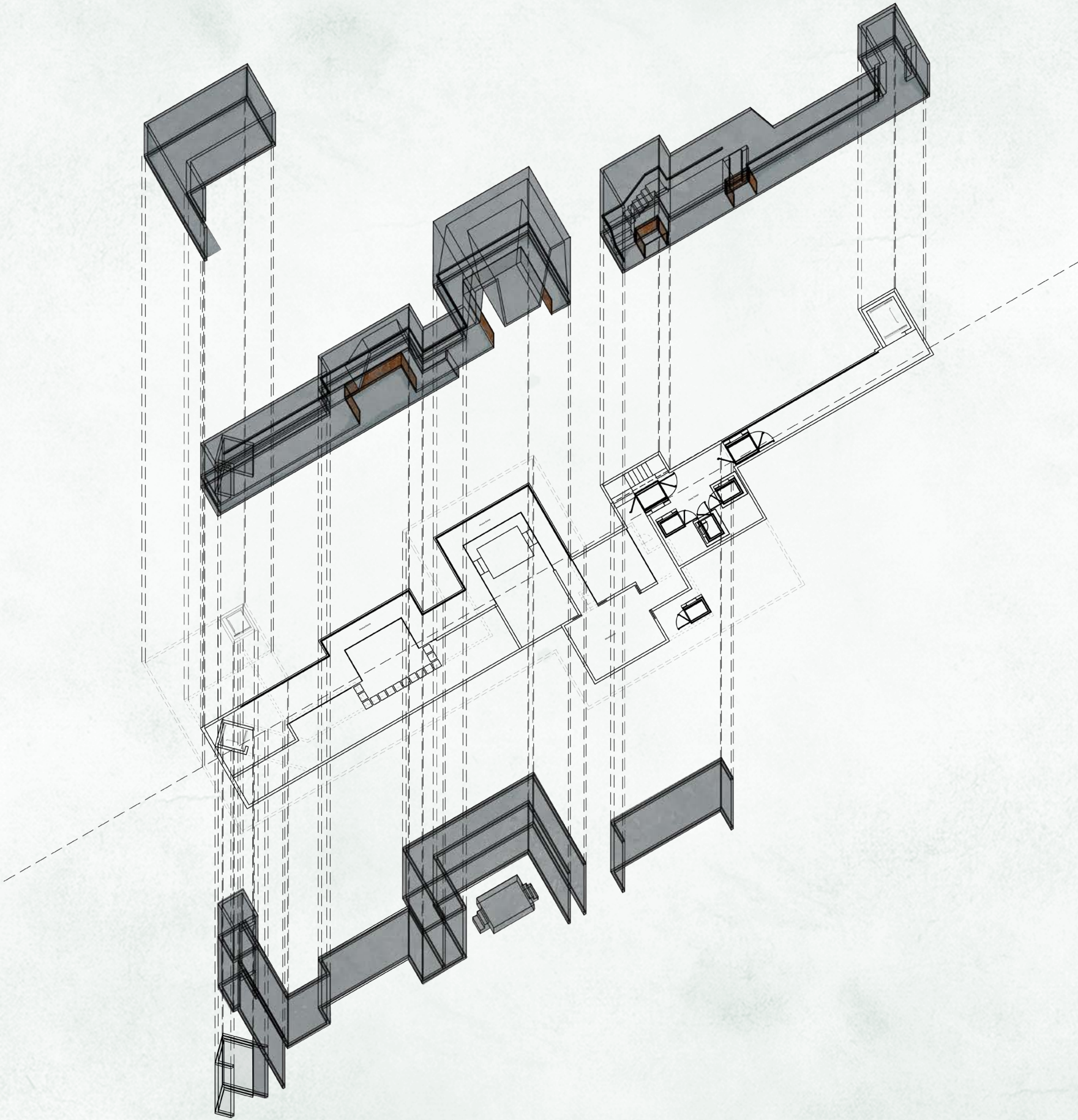
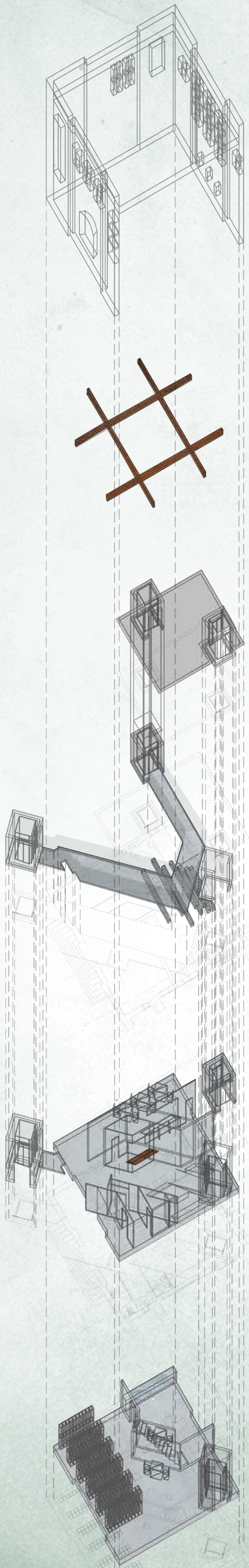


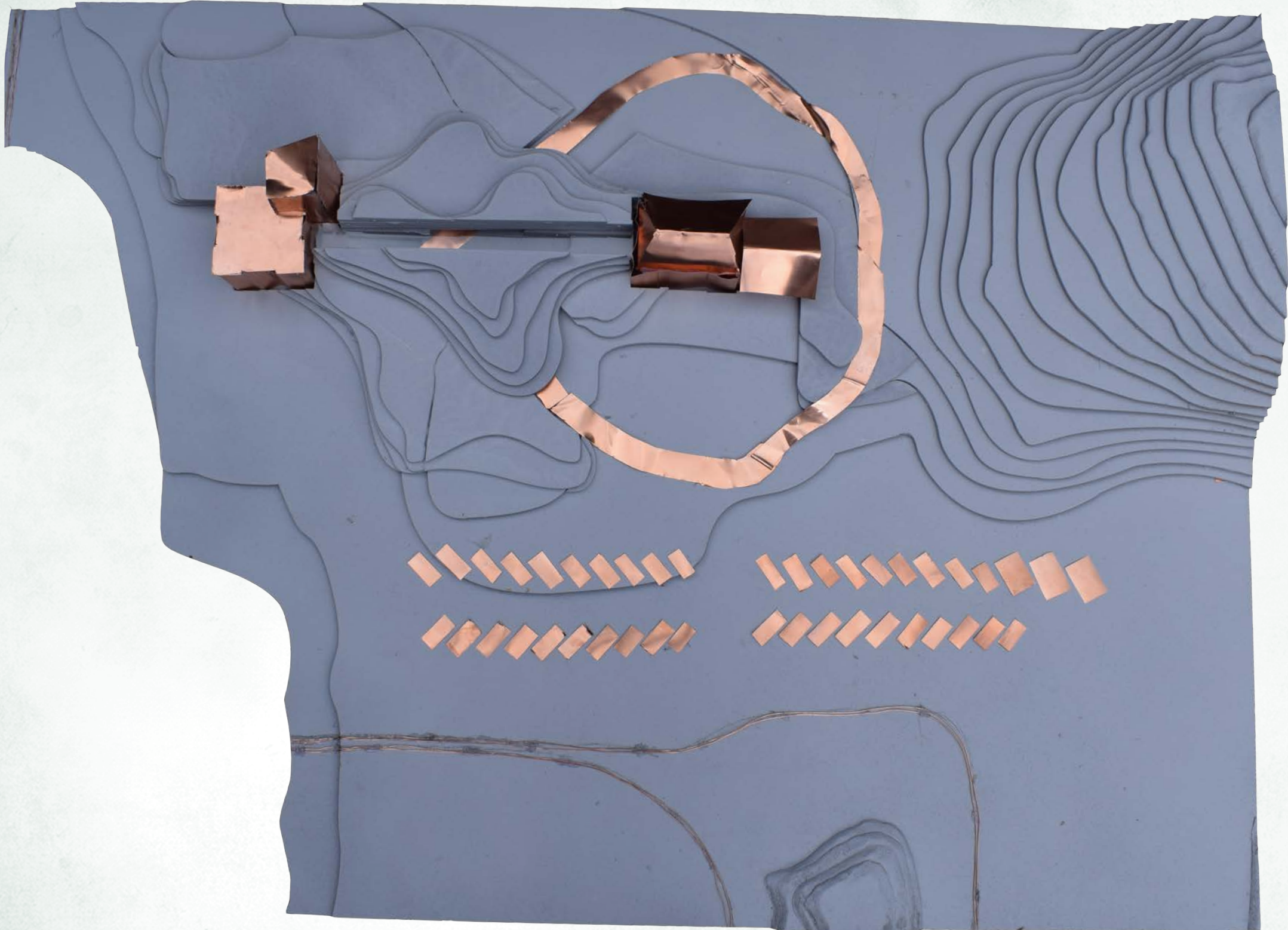
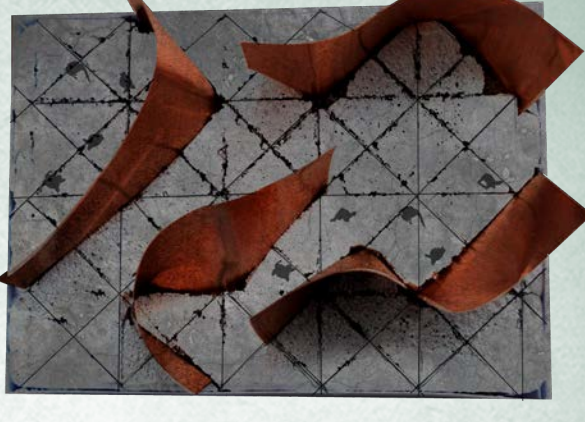
5. RE-ROUTE



6. COALESCE

EXPLODED ISOMETRIC DRAWINGS 1:150 at A0





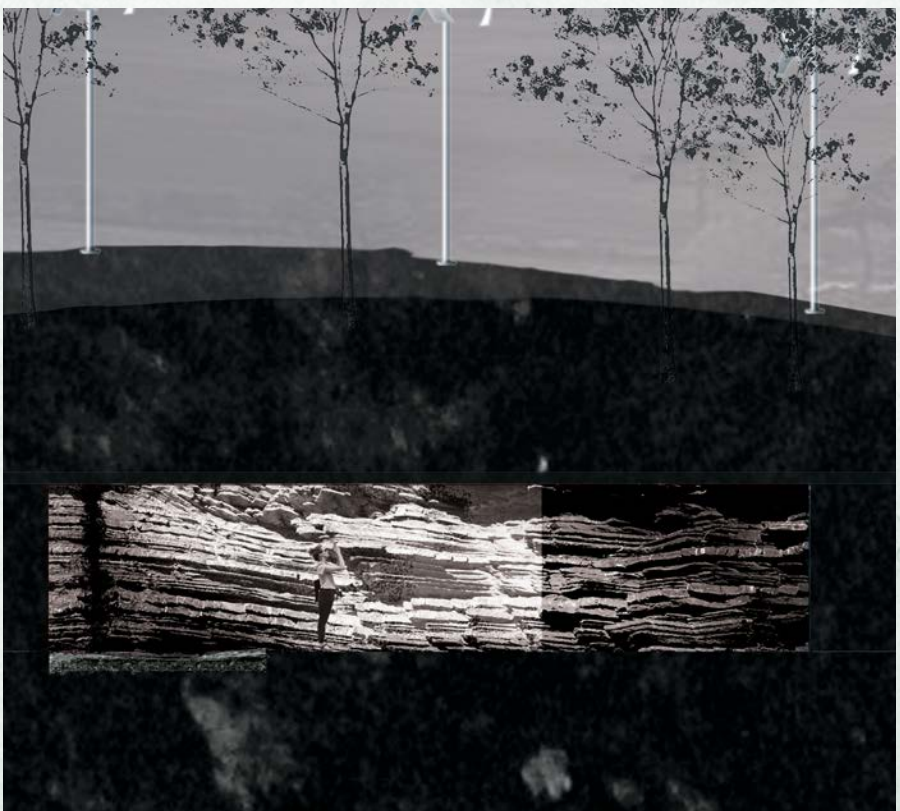
WINTER SHADOWS



SUMMER SHADOWS

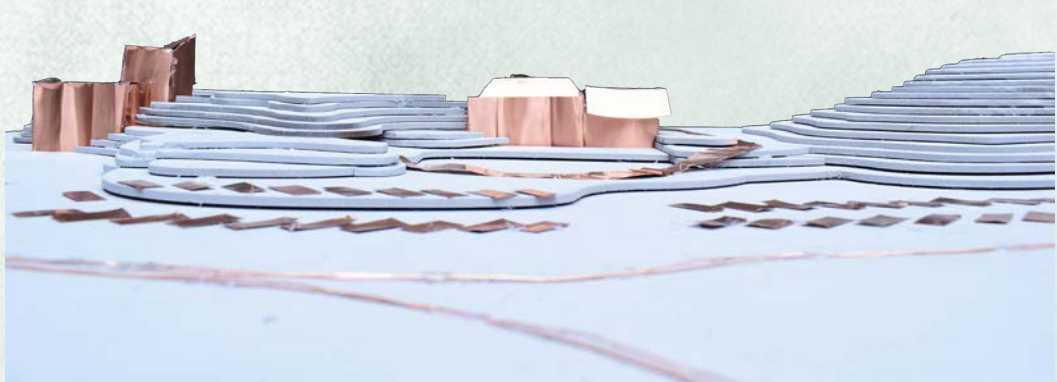


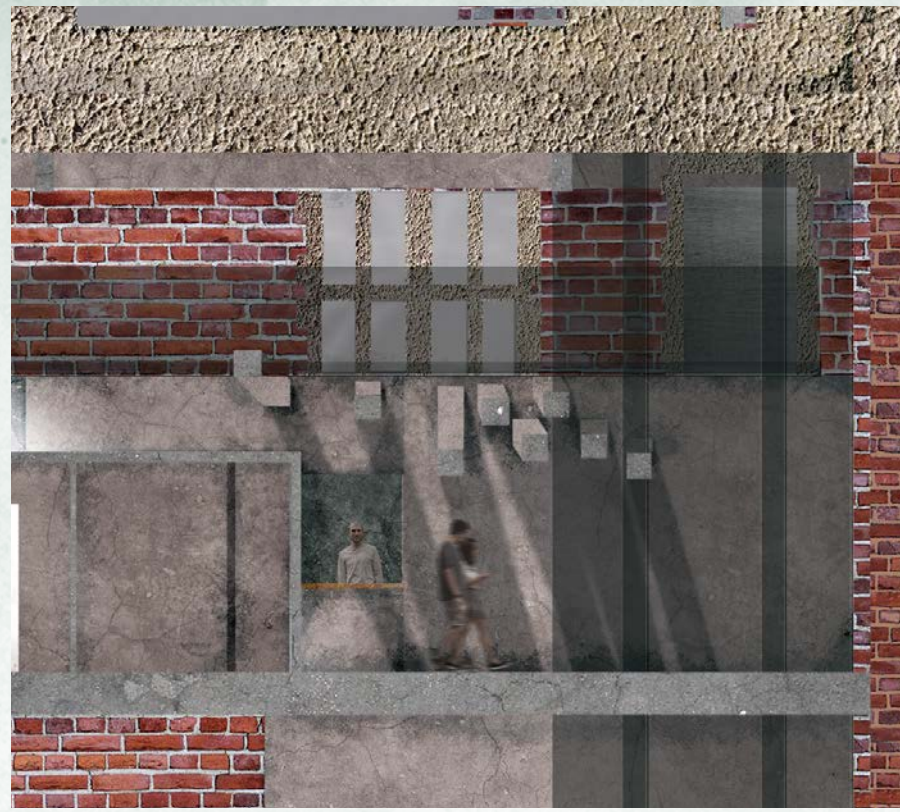
VIEWING TOWER



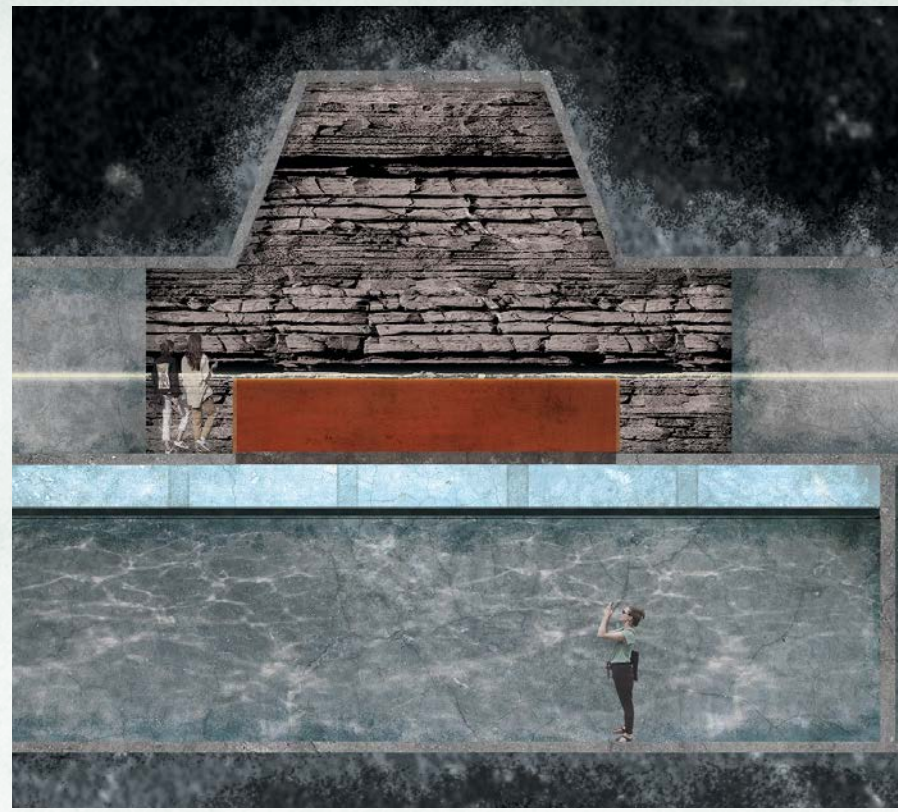
EXTERIOR VIEWING POINT

FINAL SITE MODEL 1:250

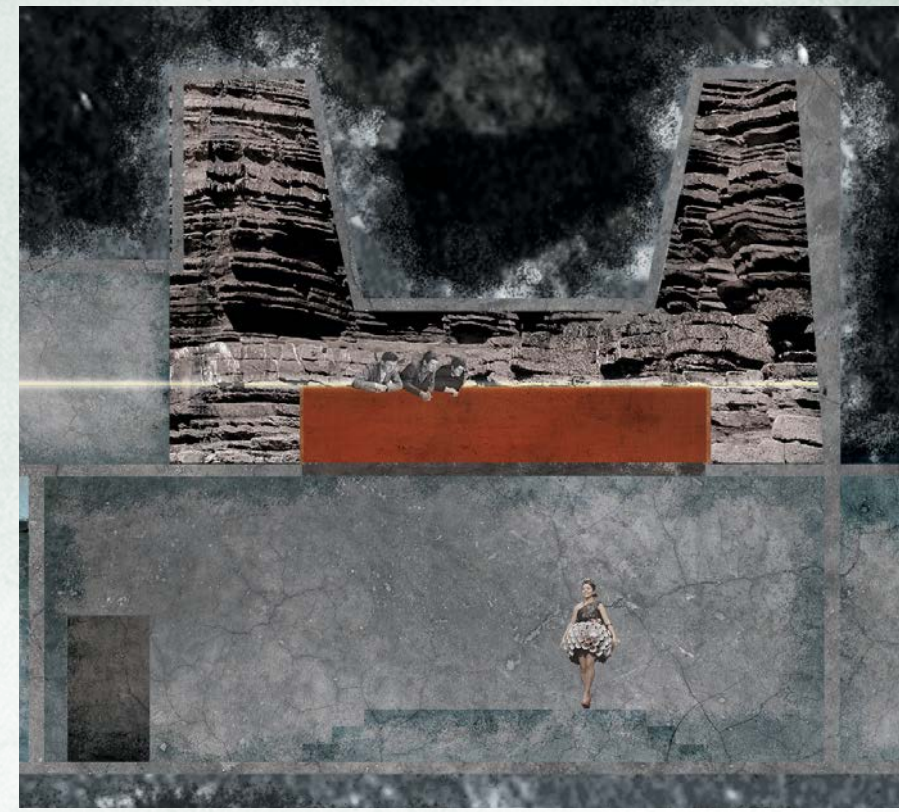




THE APPROACH



WASHOUT (WATER)



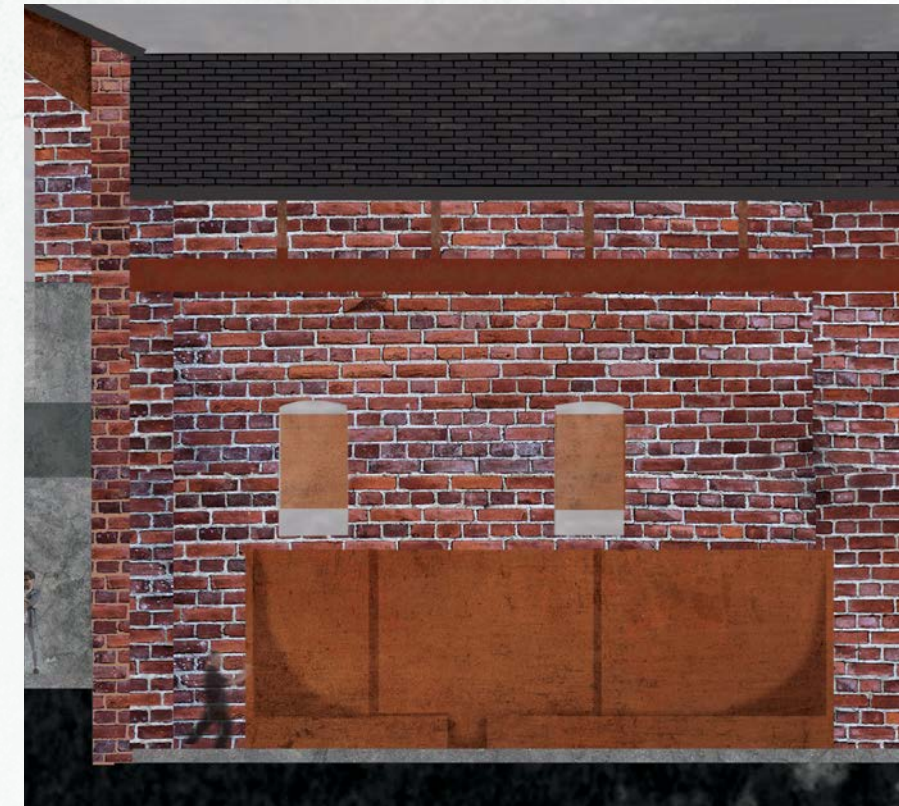
ALLUVIUM (EARTH)



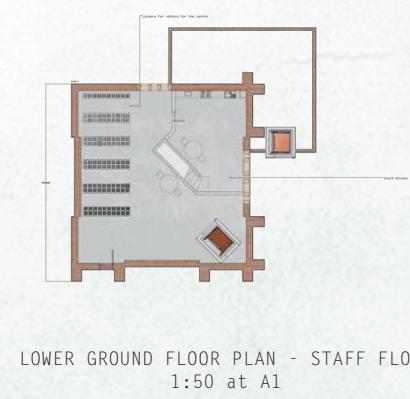
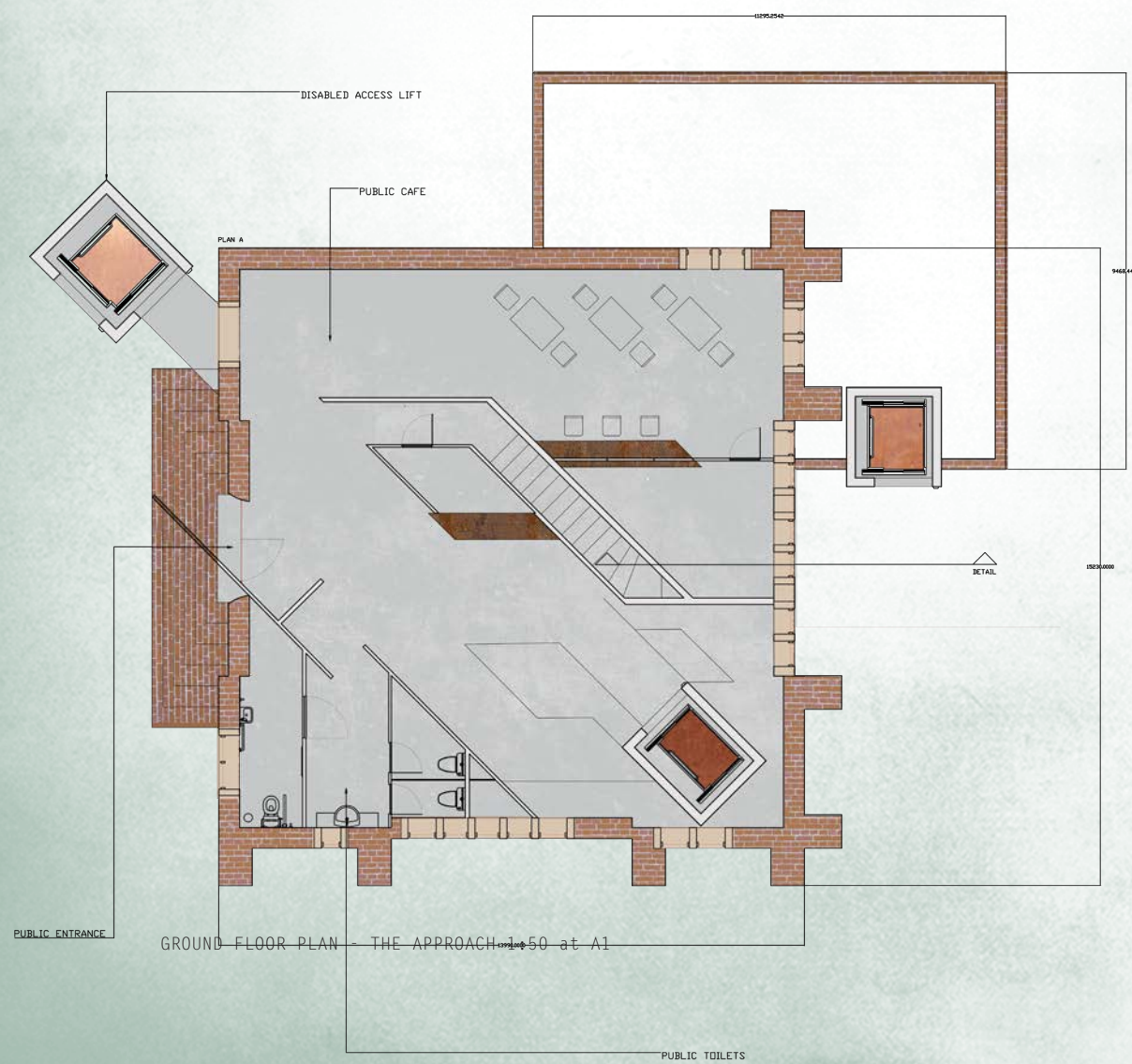
CANARY (AIR)



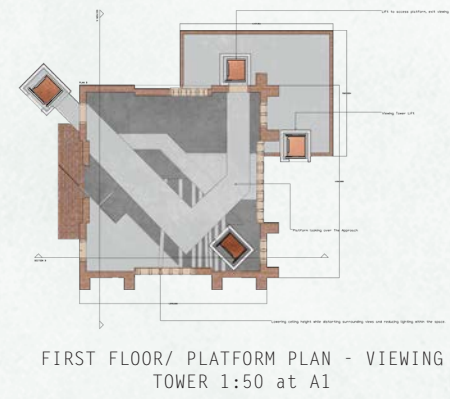
ELUCIDATORY



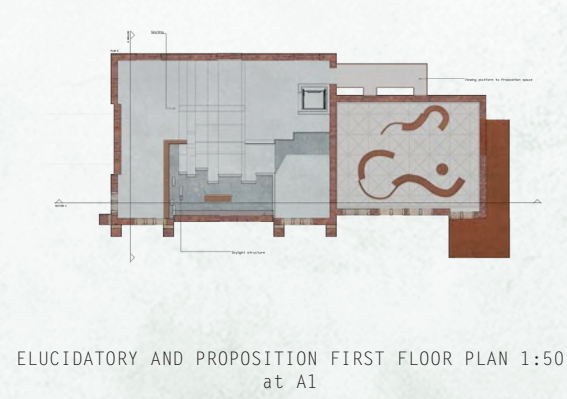
PROPOSITION



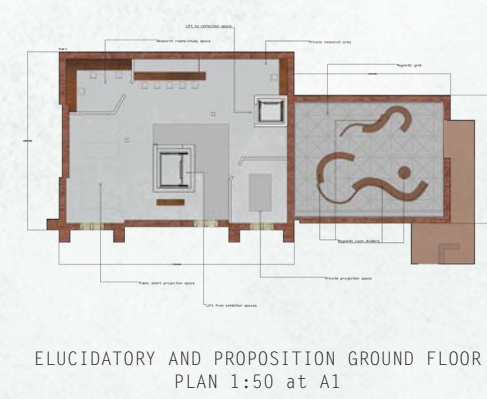
LOWER GROUND FLOOR PLAN - STAFF FLOOR
1:50 at A1



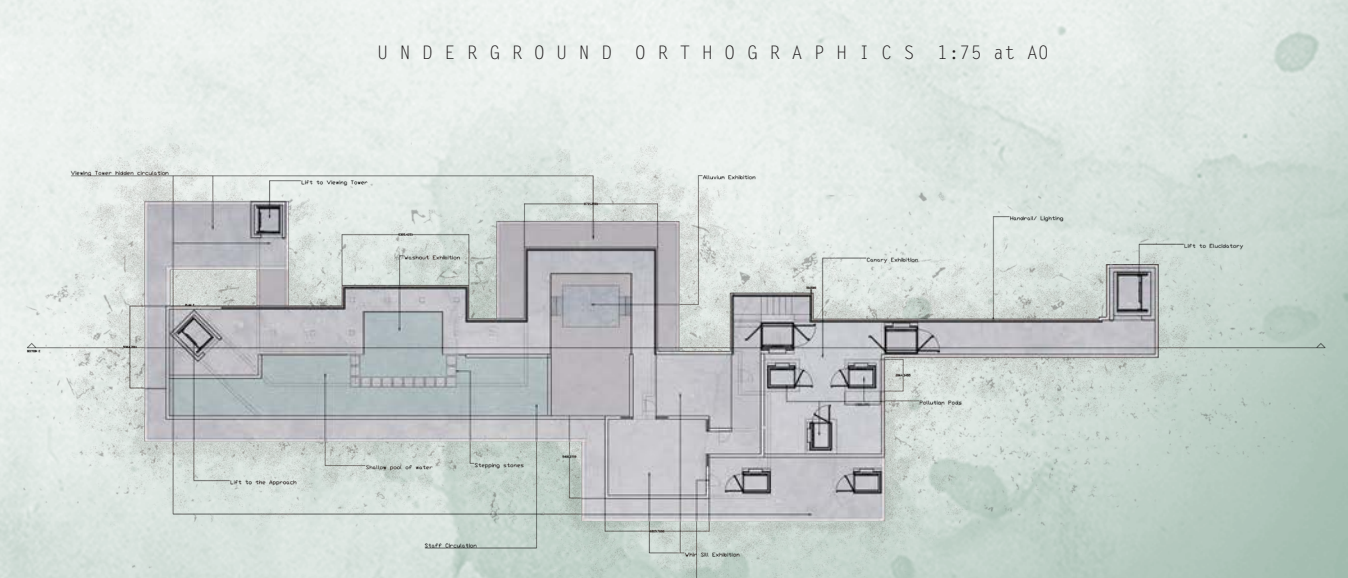
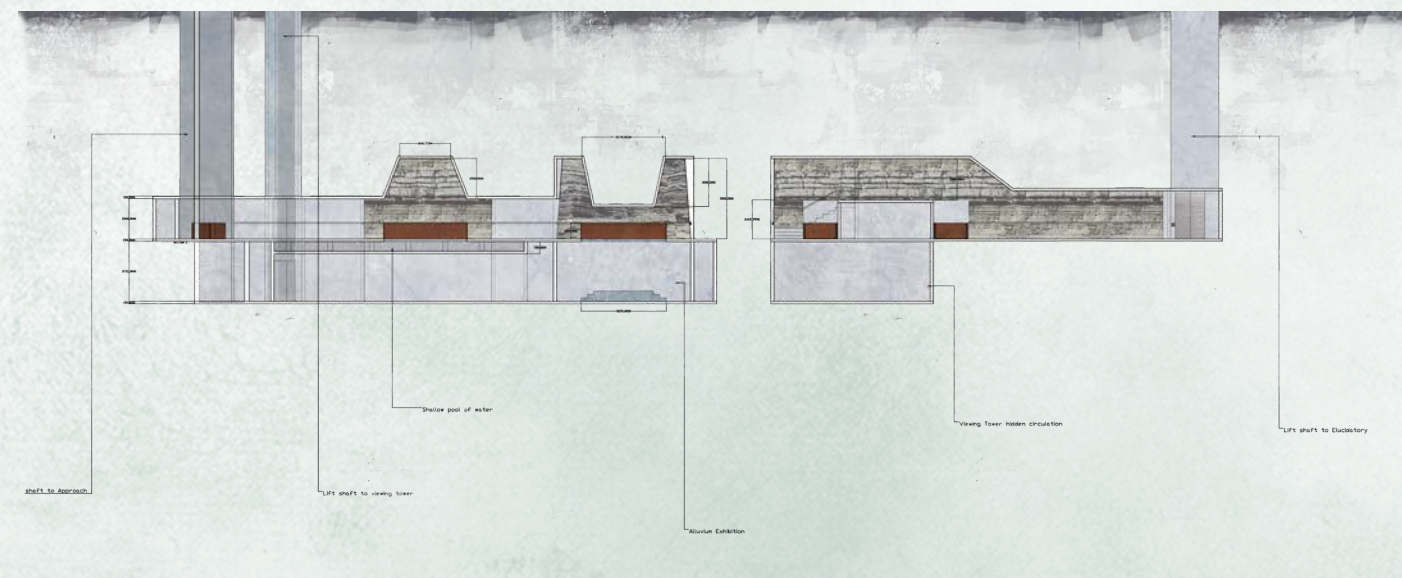
FIRST FLOOR/ PLATFORM PLAN - VIEWING
TOWER 1:50 at A1



ELUCIDATORY AND PROPOSITION FIRST FLOOR PLAN 1:50
at A1

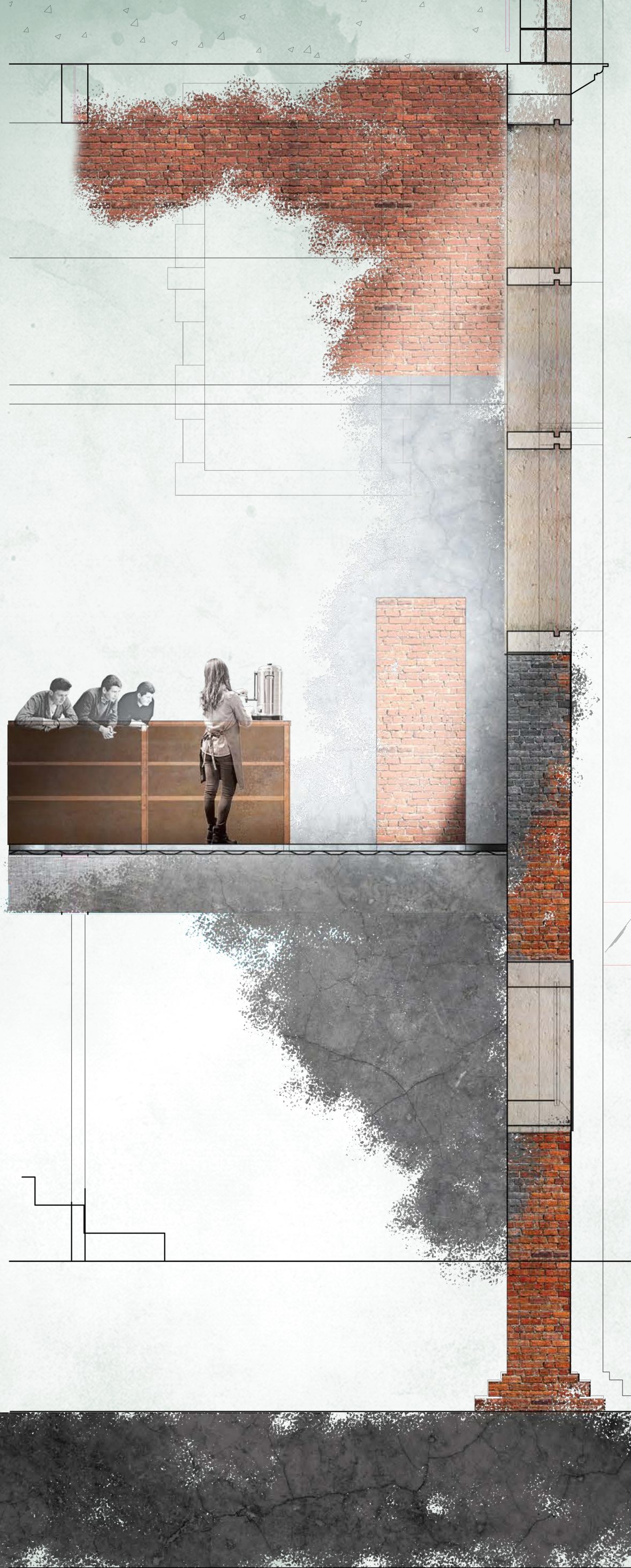


ELUCIDATORY AND PROPOSITION GROUND FLOOR
PLAN 1:50 at A1



UNDERGROUND ORTHOGRAPHICS 1:75 at A0

DETAIL 1:20 at A0



LANDSCAPE SHORT SECTION



MATERIALITY //

Primary materials include:
- reused brick from on site demolitions
- fly ash concrete (this reuses fly ash that would ordinarily be polluting groundwater, and strengthens concrete)
- recycled corten steel and copper sheets

SECTIONAL MODEL 1:100

