

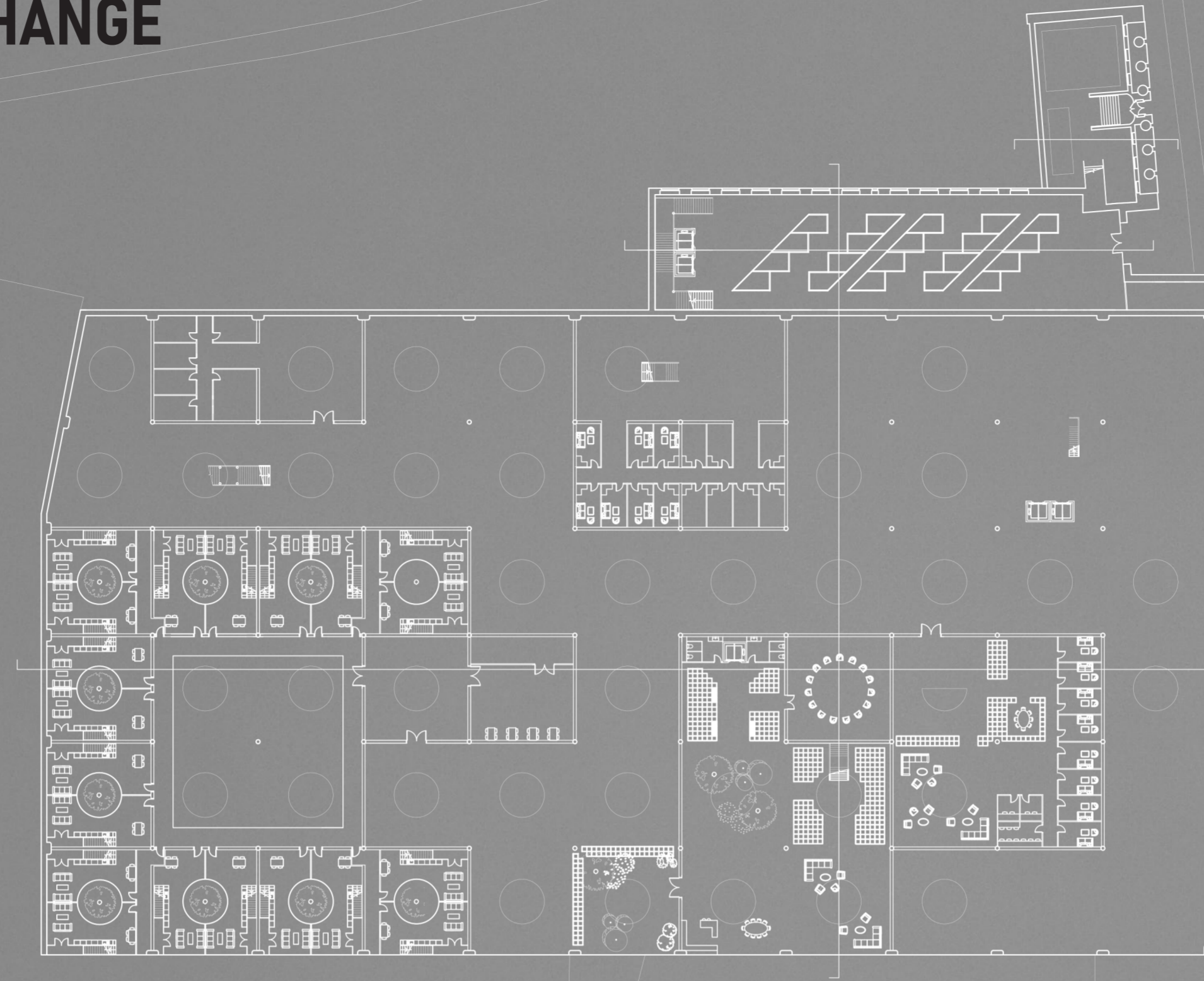
# PLANTING THE SEEDS OF CHANGE

## Mae Riley

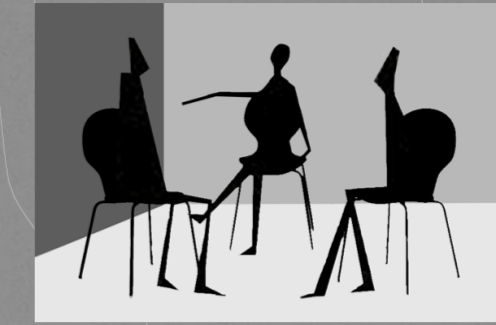
My project concentrates on the area of Holbeck in Leeds and proposes to transform the former flax mill, Temple Works, into a safe space for women. It aims to improve lives and offer opportunities to women working in the sex trade in Holbeck's legal red light district; and to offer a solution to the community that suffers from exposure to the sex work industry. In addition, my project also aims to partake in the increase of green space in a city centre that is currently undergoing a 'parks and green space' strategy', improving air quality, environmental bio-diversity and mental health.

The design for the building brings together a safe space for women with: housing; a drug rehabilitation centre; mental, physical and social care facilities; a sexual health clinic; domestic violence counselling; an advice centre; a space self-advocacy and legal service; and a roof top garden accessed through a street with market stalls to sell produce grown on site and also to be used by local businesses. The roof top garden includes: a Leeds 2023 celebration garden; a park; allotments and a healing garden for the exclusive use of the women.

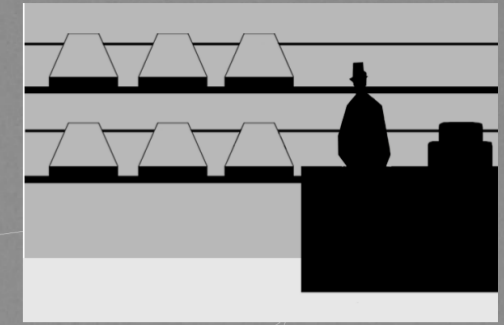
My aim was to create a 'village in a building', with a street, a park, shops and a community. Temple Works allowed me to do this due to its sheer scale, the building gained its Grade 1\* listing from being the largest single-storey building at the time of its construction. The building also incorporated a number of innovative design features, one being a series of cast iron columns that supported a multiple-vaulted ceiling, this structure creates a natural grid for the building which was the inspiration for my concept. My intention is to restore the building to its former glory and to return it to an important, integral part of the Holbeck Community.



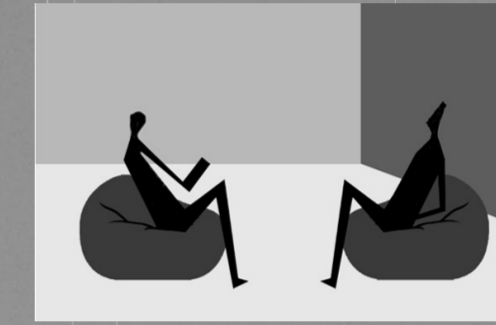
ACTIVITY DIAGRAM



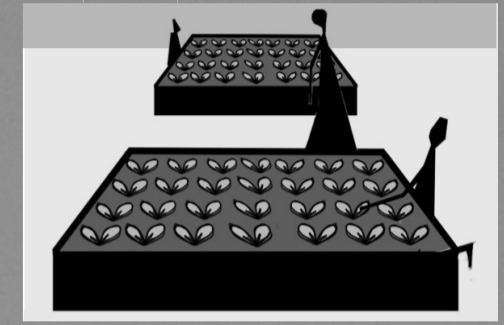
Socialising



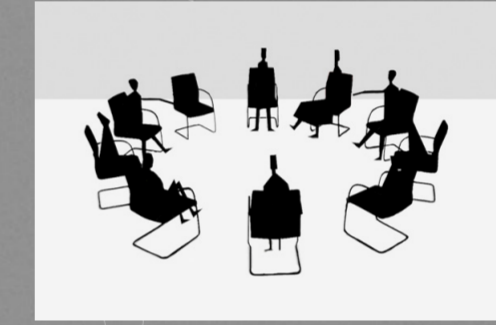
Selling



Counselling



Growing



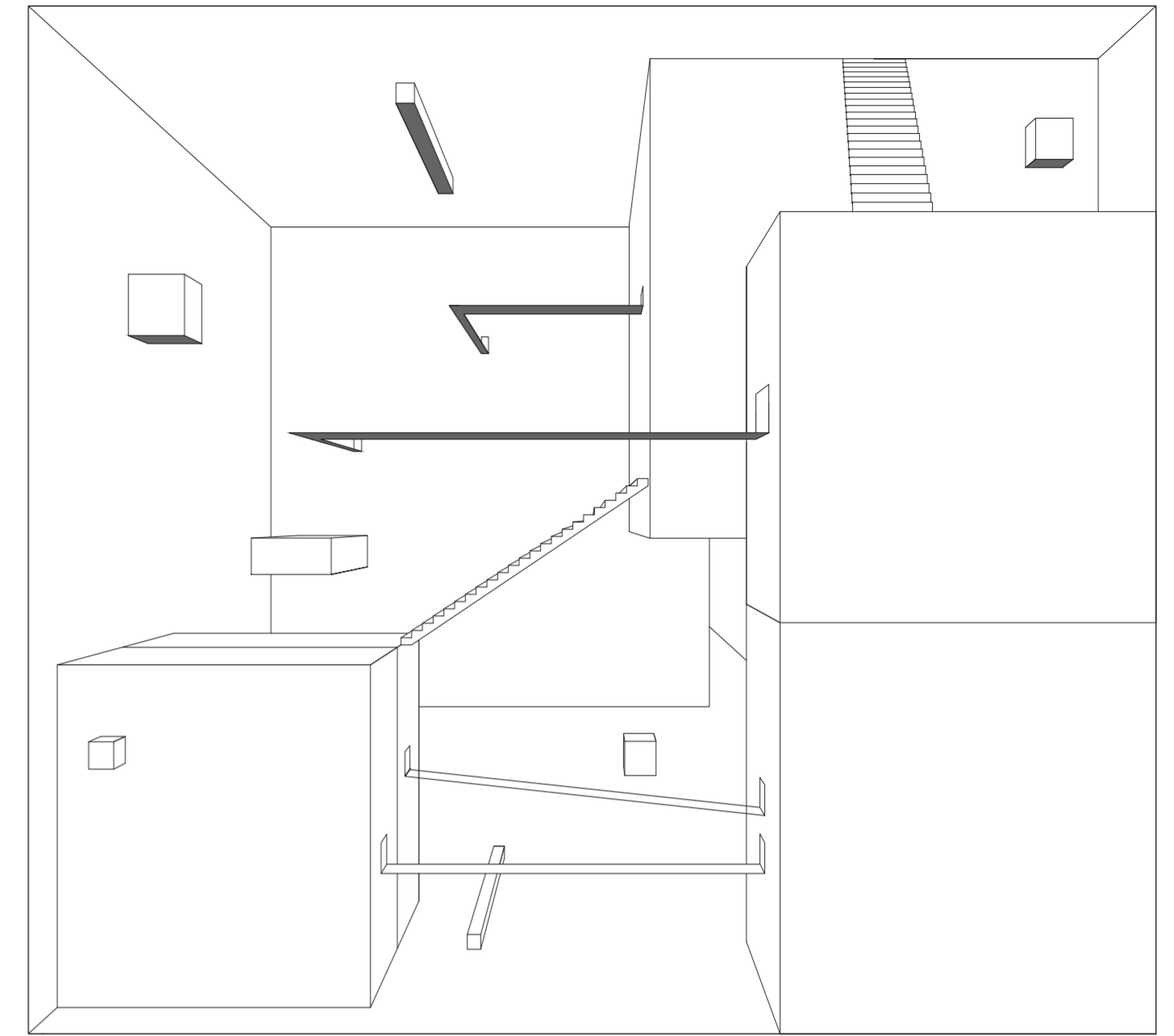
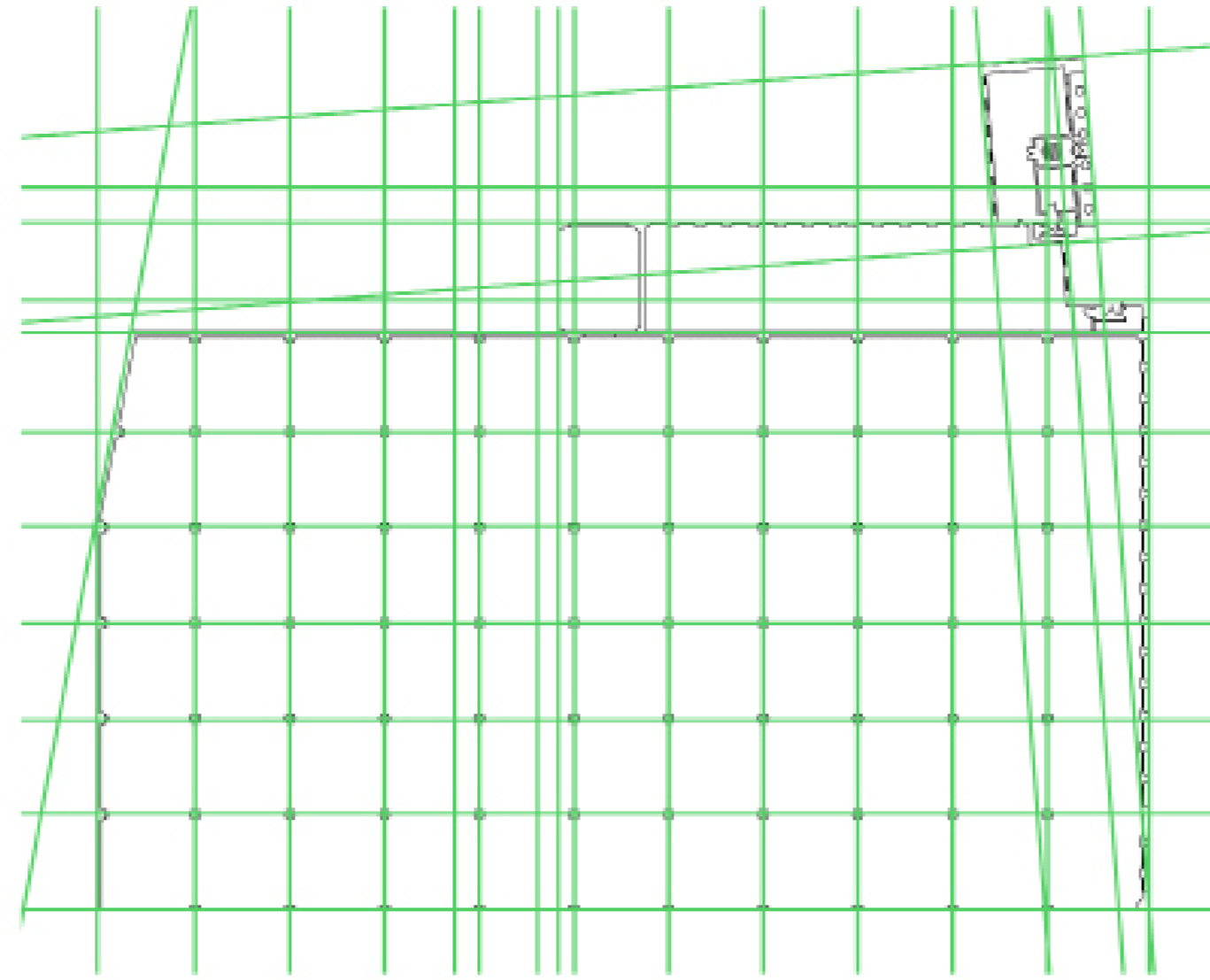
Group Therapy



Walking



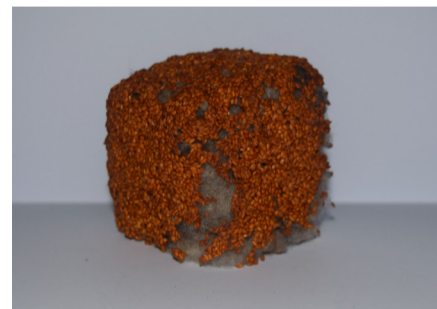
# CONCEPT



CONCEPT IMAGE

## THE EFFECTS OF PLANTING A SEED

I planted cress seeds in a sheeps wool, felted cube so that I could track the growth.



Day 1



Day 2



Day 3



Day 4



Day 5



Day 6



Day 7



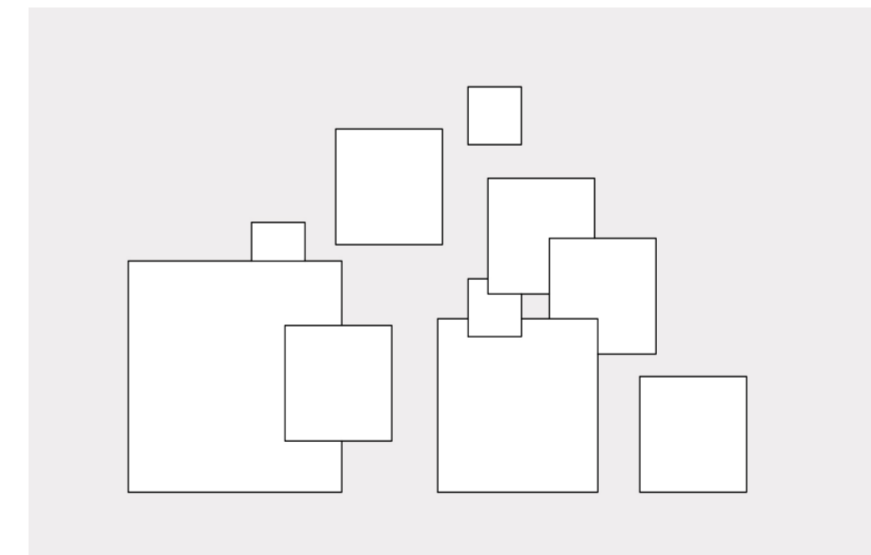
Day 8



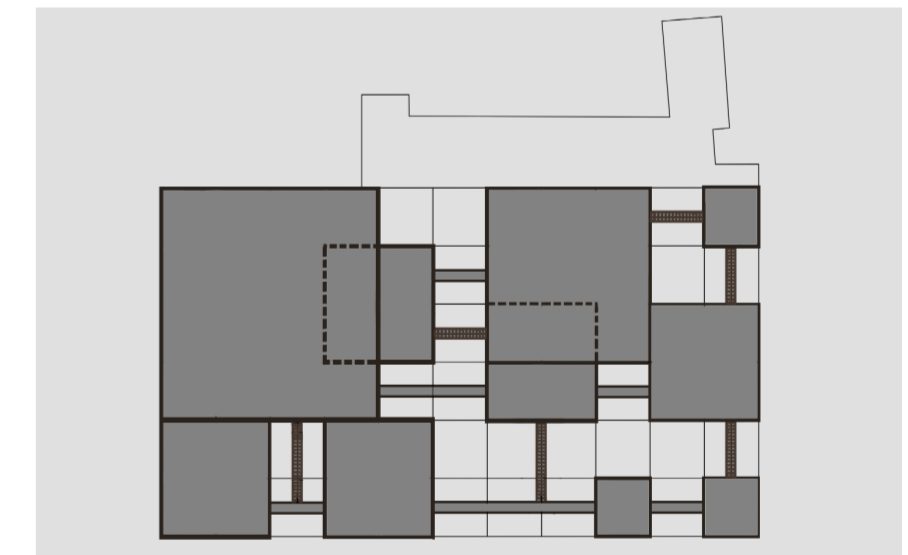
Day 9



TEMPLE WORKS  
Derelict Mill Building in Industrial Area



TO ADAPT  
To create adaptable, interchangeable spaces



TO GROW ROOTS  
To create connections between spaces in the building



TO PLANT SEEDS  
To help the women grow into the people they want to be but also to let nature take over



TO CREATE GREENER SPACES  
To design a roof top garden and courtyard gardens that will help with the pollution issues in Leeds



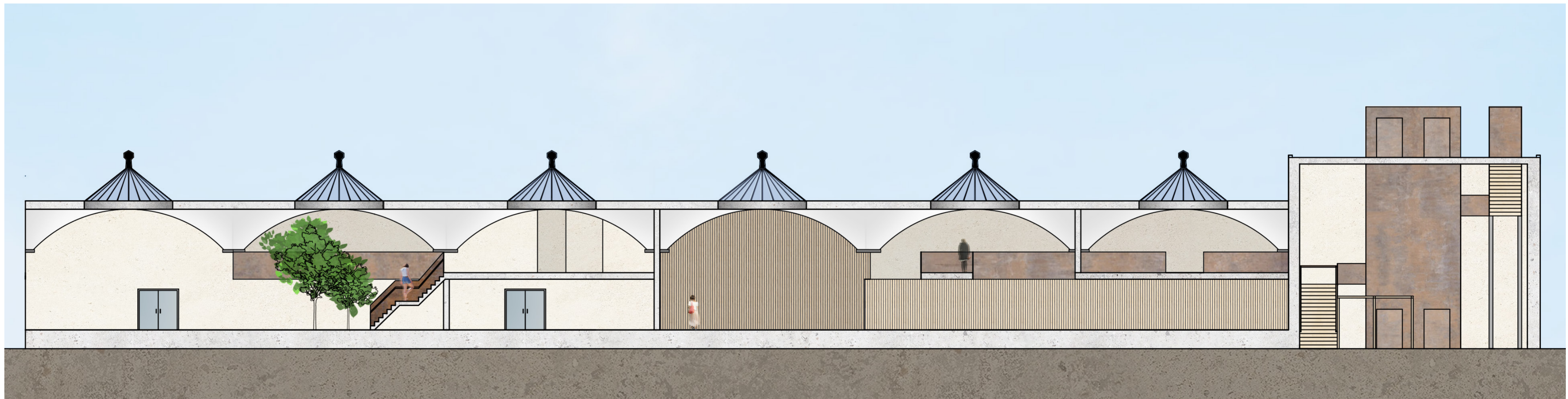
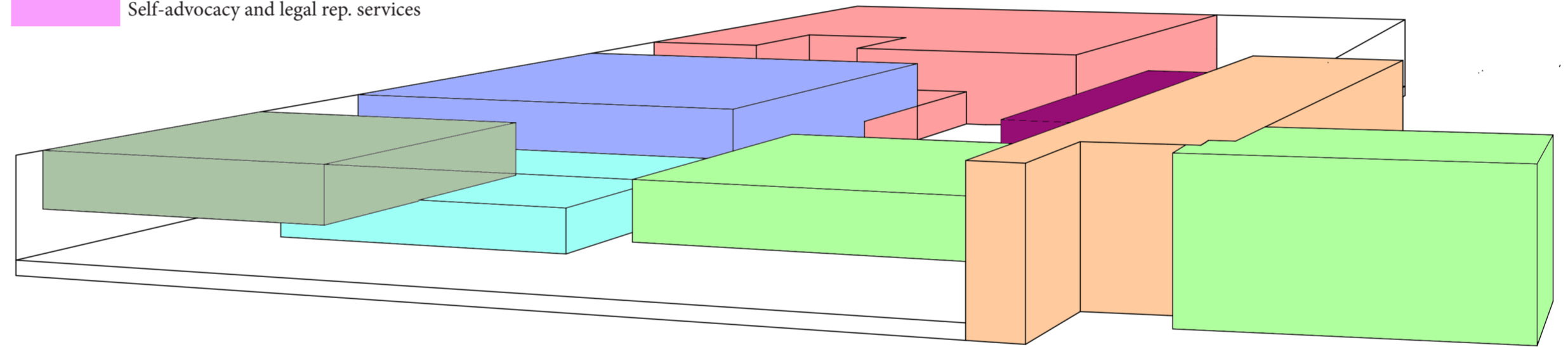
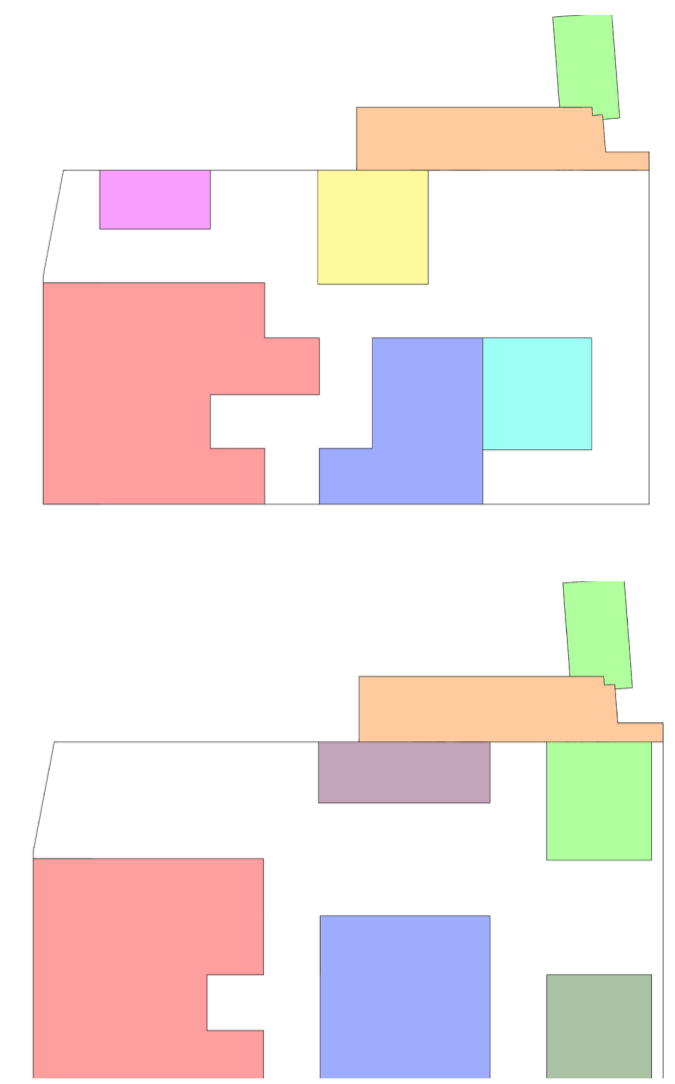
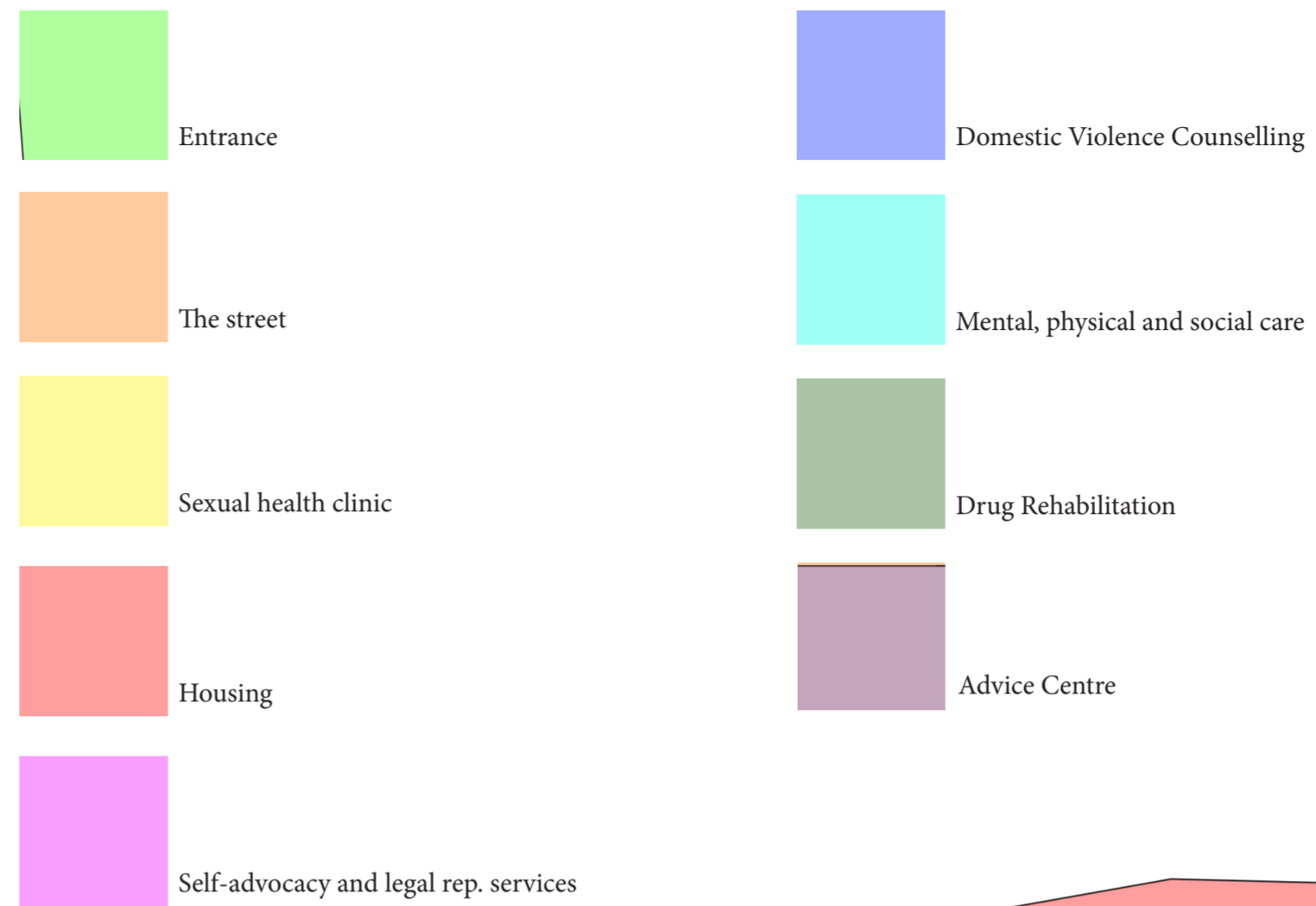
TO TELL THEIR STORY  
To allow sex workers stories to be told freely and to no longer be a taboo subject

# PROPOSED SPACES

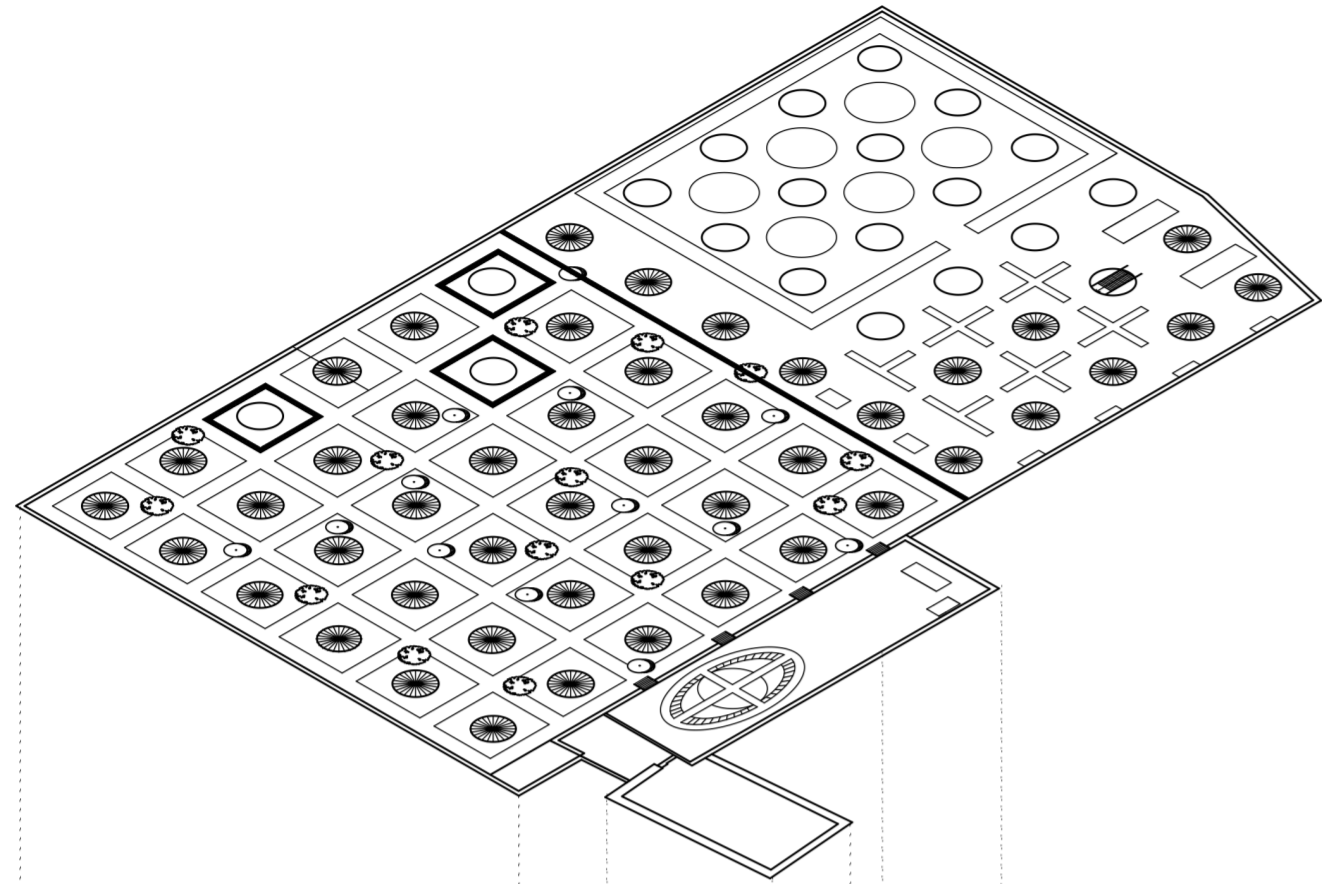
Program one is a Safe space for the sex workers of Holbeck. A number of streets in Holbeck became legalised Red Light District Areas in 2014 as part of a Managed Approach to reform the sex work industry in the city to the benefit of both the women and the police trying to manage it. Although this program was undertaken with the best of intentions, the documentation I have uncovered show that the benefits have been negligible and the streets have remained problematic.

Program two is a green space. This will include a variety of different gardens and allotments on the roof and within Temple works. Leeds city centre lacks green space with the main parks and majority of it's green area being situated the outskirts. The air pollution in Leeds and City centres in general is a current concern and one of the many things that can be done to improve air quality is increase the percentage of green space in the area.

The green spaces at Temple works will include roof top allotments where fruit and vegetables will be grown and harvested by the women as part of a scheme to get them into the routine of a different job, gardens where a selection of flowers will be grown and picked as part of the scheme, a Leeds 2023 celebration Garden for the public to use and learn about the history of Leeds and Holbeck, a park for the public and finally a selection of private healing gardens submerged into the building for the women to use. Additionally, there will be a street with market stalls where the produce grown by the women will be sold to local businesses that want to support local enterprise and ethical practise.



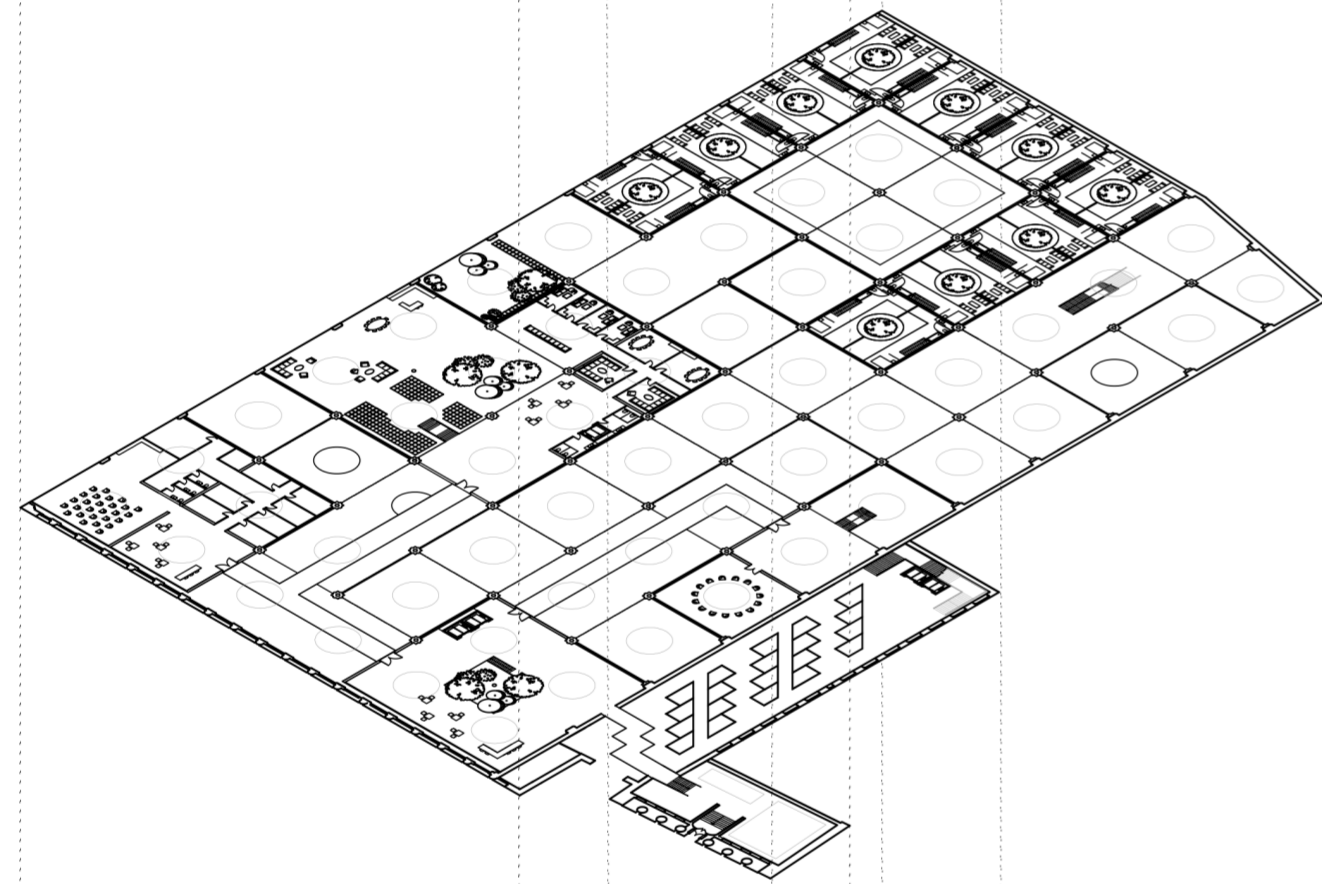
# PROPOSED SPACES



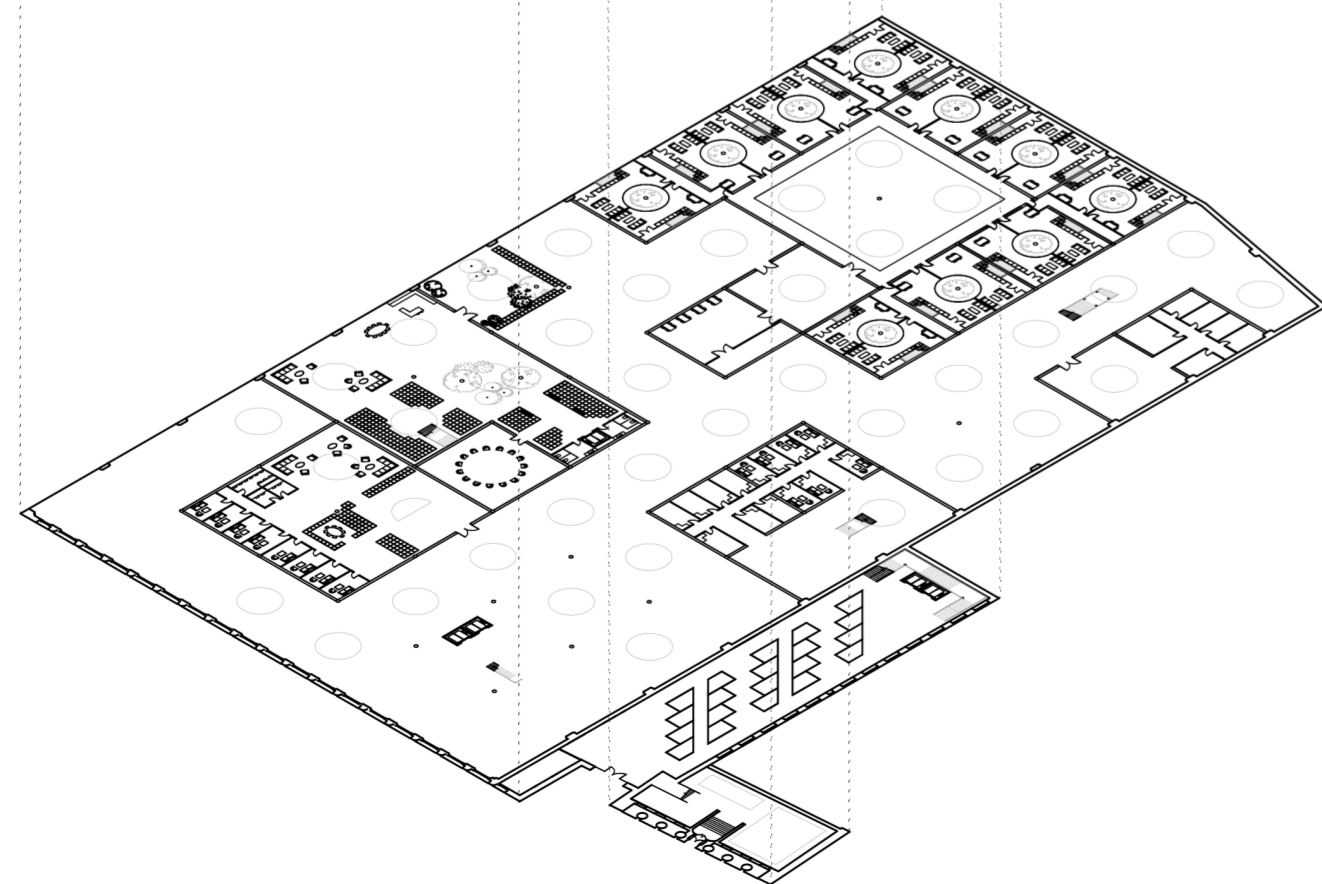
THE MAIN MILL ENTRANCE (WOMEN ONLY)



DOMESTIC VIOLENCE COUNSELLING (WOMEN ONLY)



THE STREET (PUBLIC USE)



## DETAIL: THE HOUSING

The housing section of the building is located in the south-west corner of the main mill, situated as far away from the street and any road noise. This is quick housing for women that lose their home or need to be re-homed in an emergency due to a variety of reasons. Overall, the whole housing area measures around 1936 metres squared, including the 484 metres squared courtyard in the middle. Each individual housing unit will measure approximately 60.5 metres squared with a mezzanine floor level. It will accommodate 20 houses.

