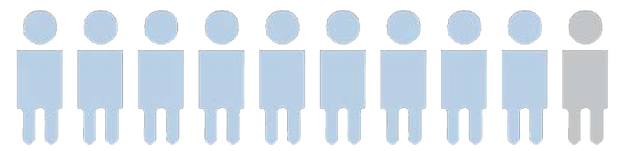


Brief

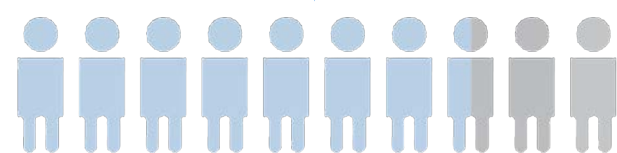
Akoe aims to resolve the widespread lack of sympathetically designed public buildings for the deaf community.

The design intervention, designed for deaf children and their families, within the east midlands, will provide a sense of **well-being** and **connectivity** using conceptual design strategies such as **biophilic design** and **colour theory**. This will initiate better communication; breaking barriers deaf children face every day. Thus, enhancing **mental well-being**, **self-esteem**, and **educational outcomes**.

Research

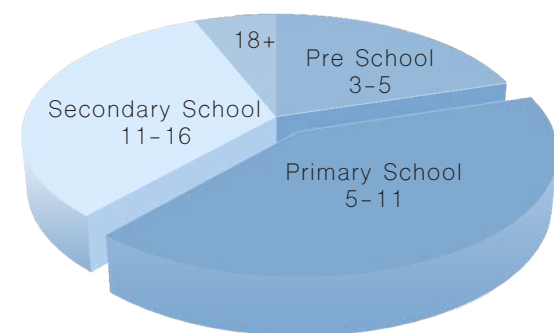


90% of deaf children born into hearing families



75% attend mainstream schools - no specialist support

Deaf child population by school age - East Midlands



Building History

Thorpes Warehouse was originally built in 1872 as a malt and barley store, storing and processing malt and barley, which arrived via the river Trent, ready to be transported by horse and cart once processed. Thorpes Warehouse is a 5-storey building featuring a combination of small and large openings, originally used for lifting and dropping goods in and out of the working warehouse.

Contextual Analysis

When designing a public building for deaf, it is important to consider locational factors such as **noise levels** and **transport links**. Thorpes Warehouse is located in a quiet yet accessible area of Newark, beside the River Trent basin. Located away from the noises and vibrations created from road and transportation, with plenty of views to nature and water (specifically beneficial to mental wellbeing).

Thorpes Warehouse possess 71 openings maximising views to the outside and maximising natural light into the building.

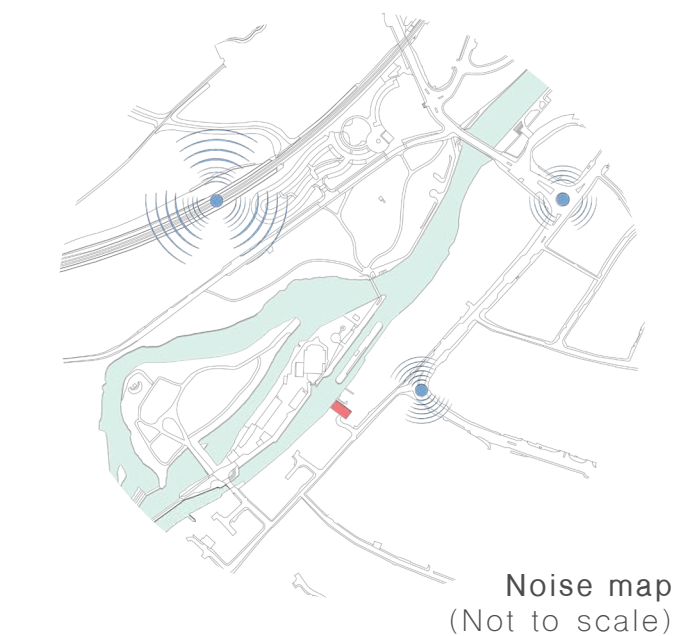
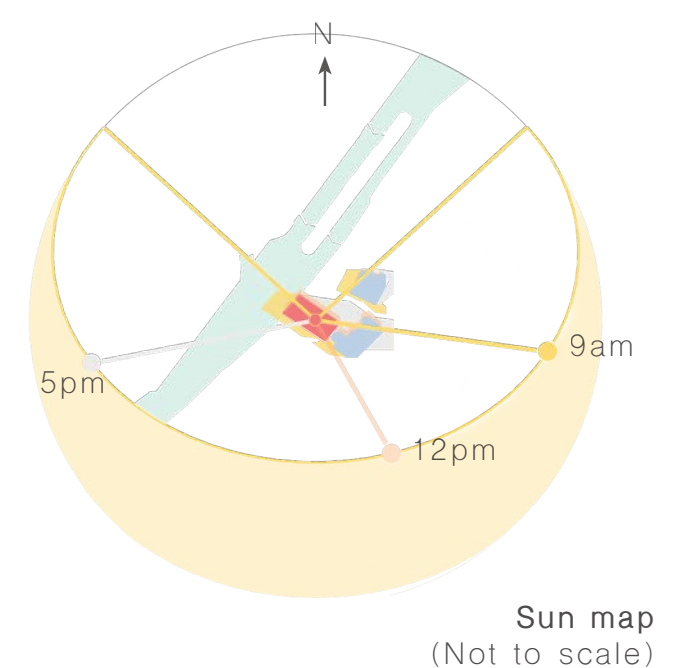
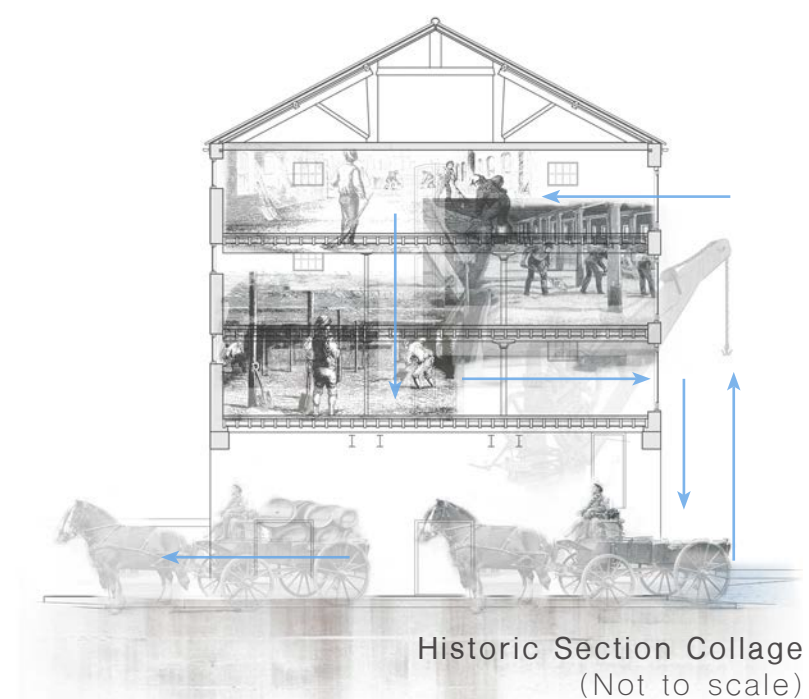
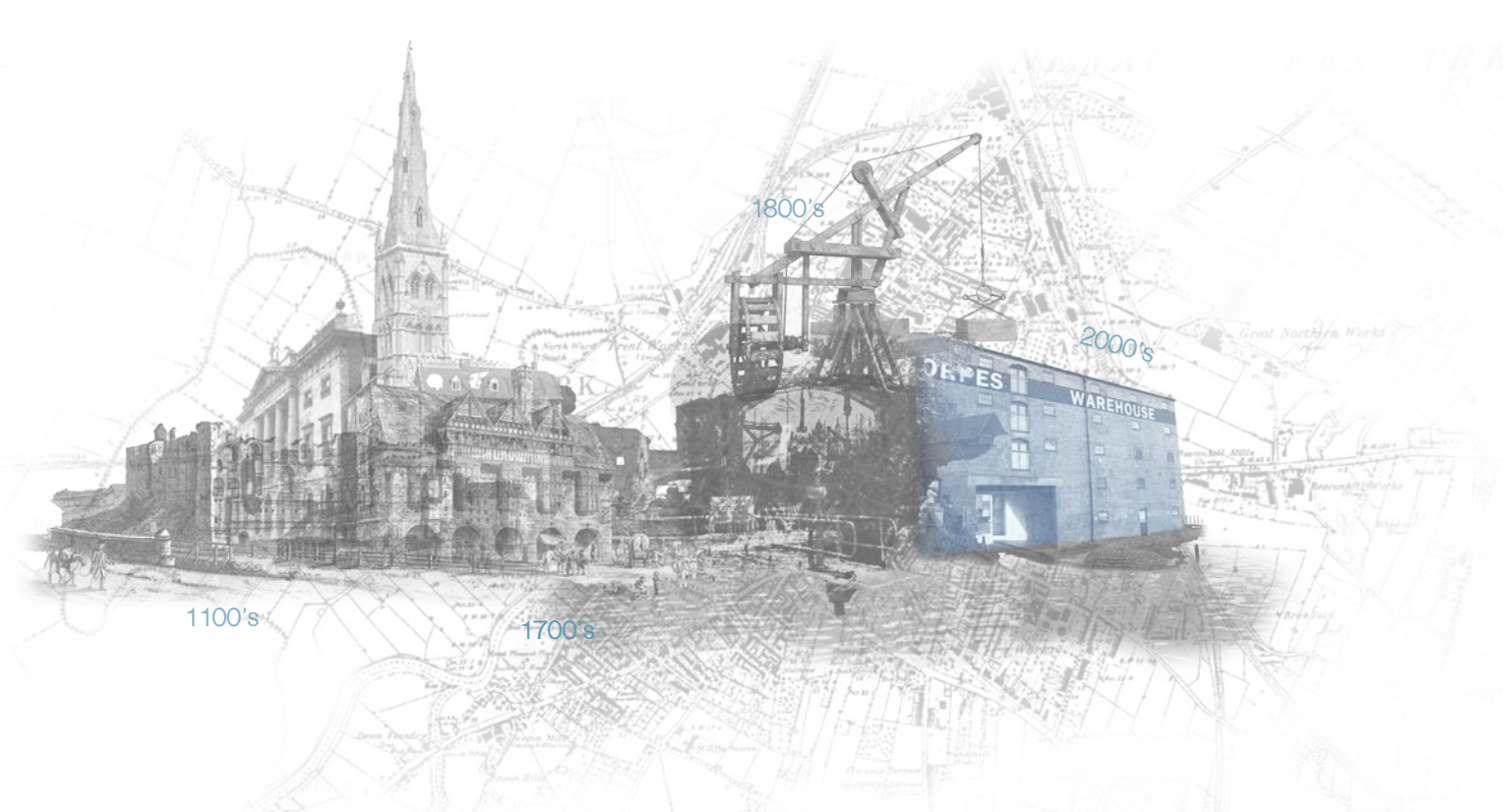
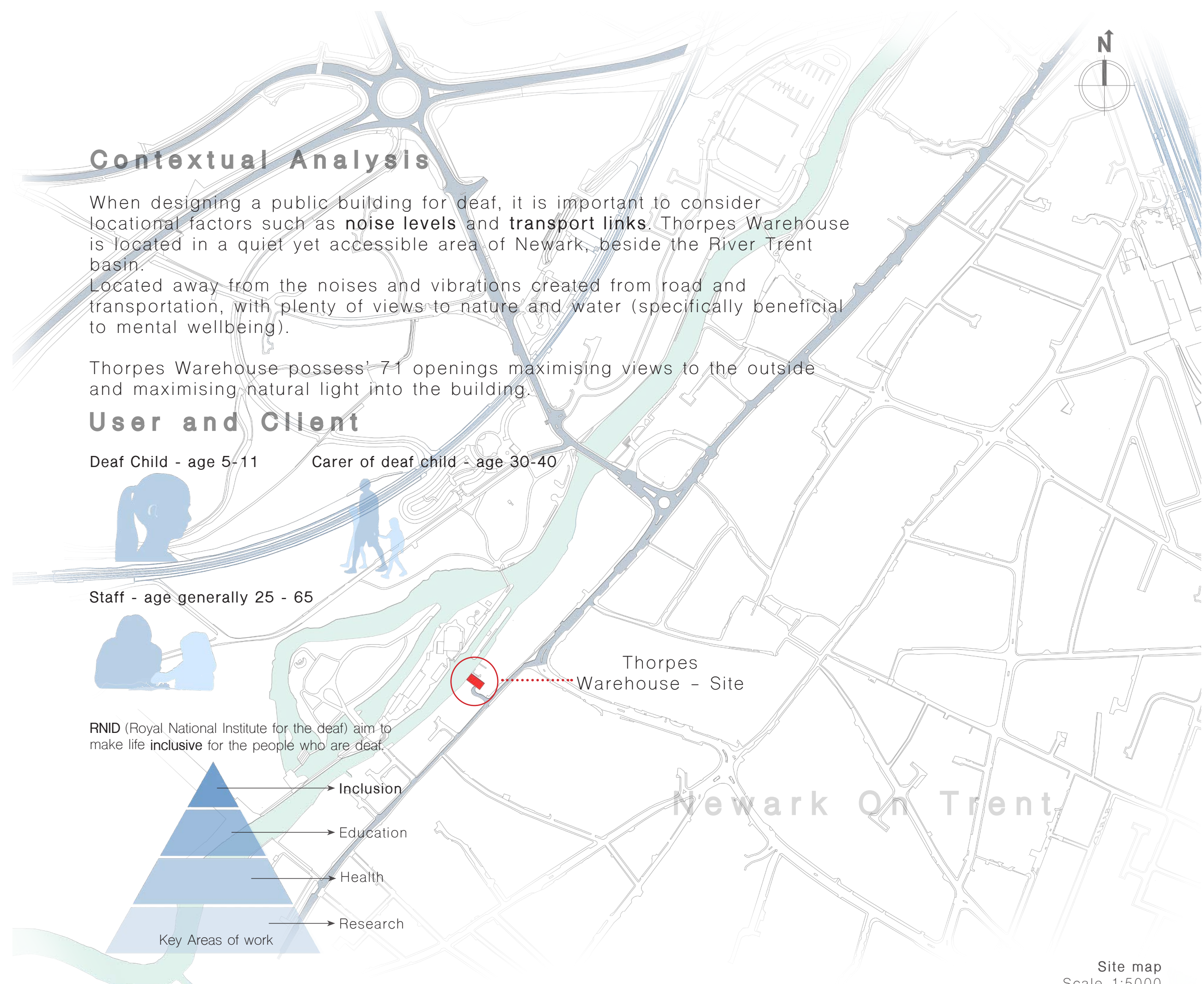
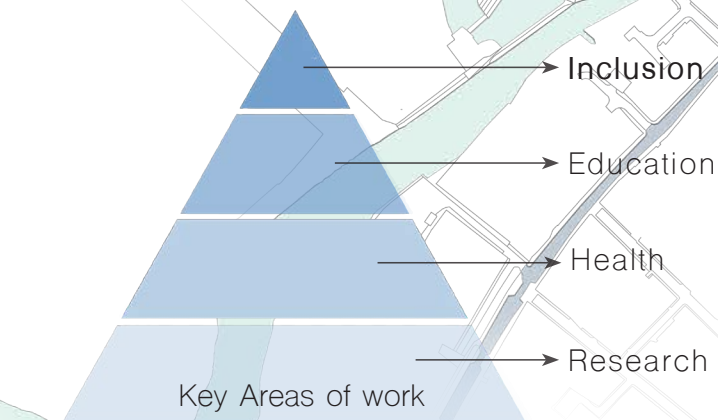
User and Client

Deaf Child - age 5-11

Carer of deaf child - age 30-40

Staff - age generally 25 - 65

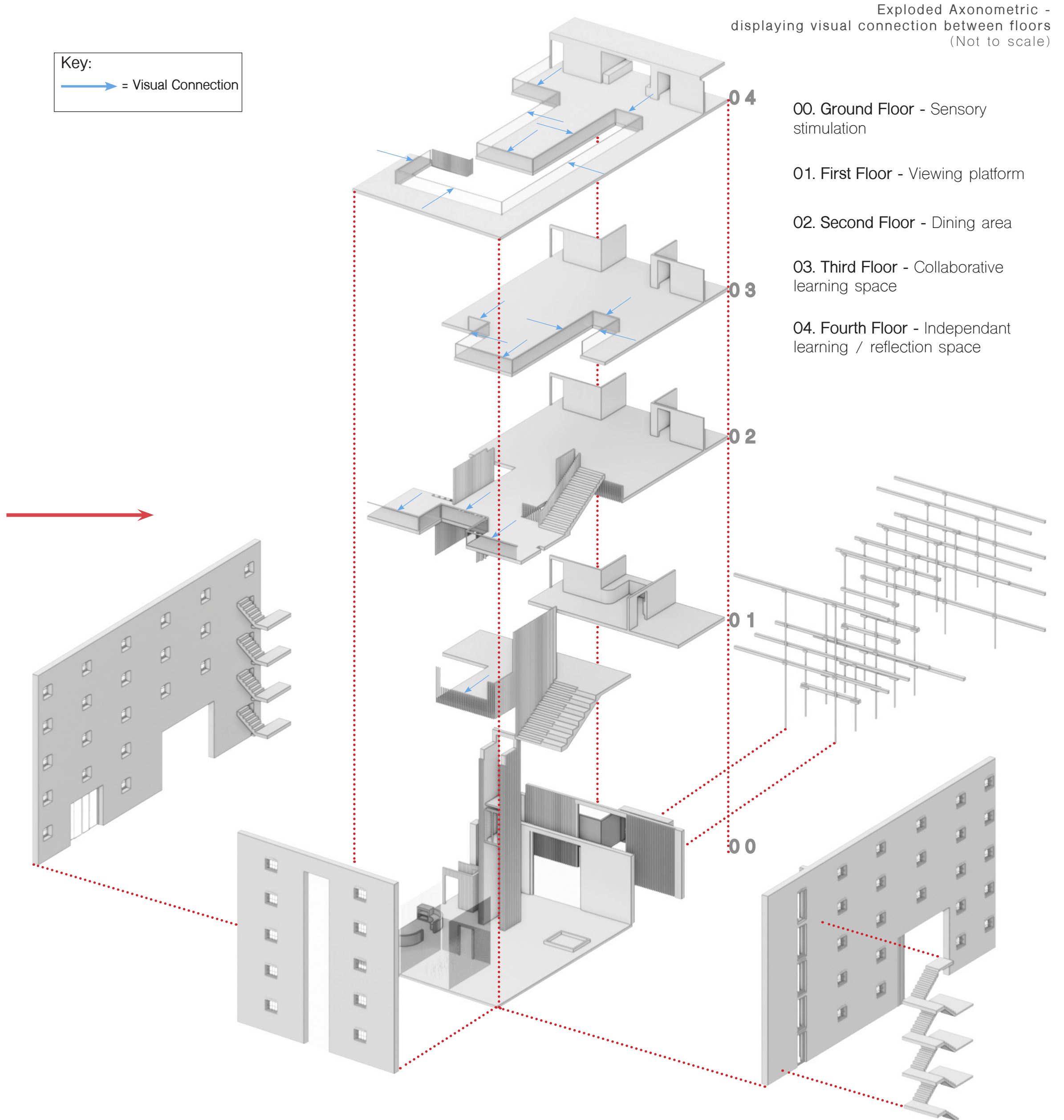
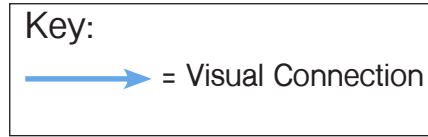
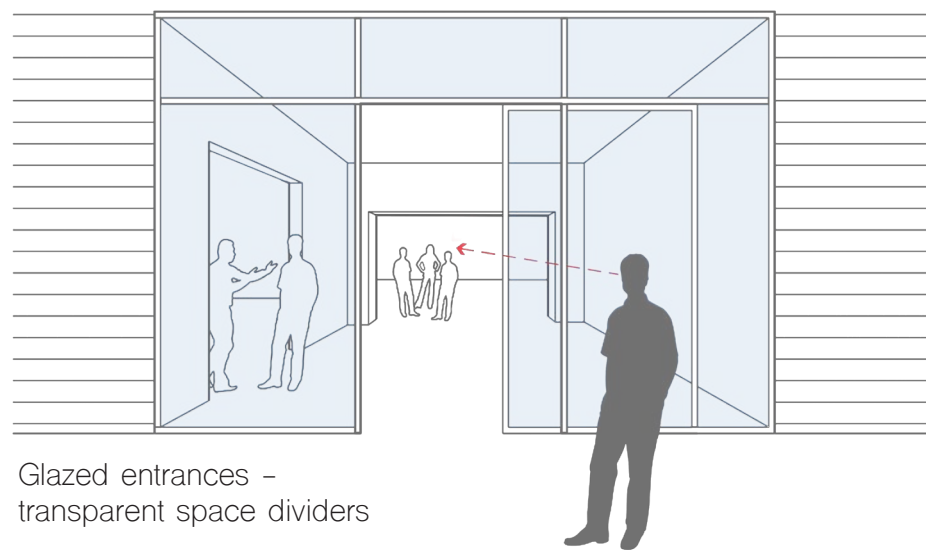
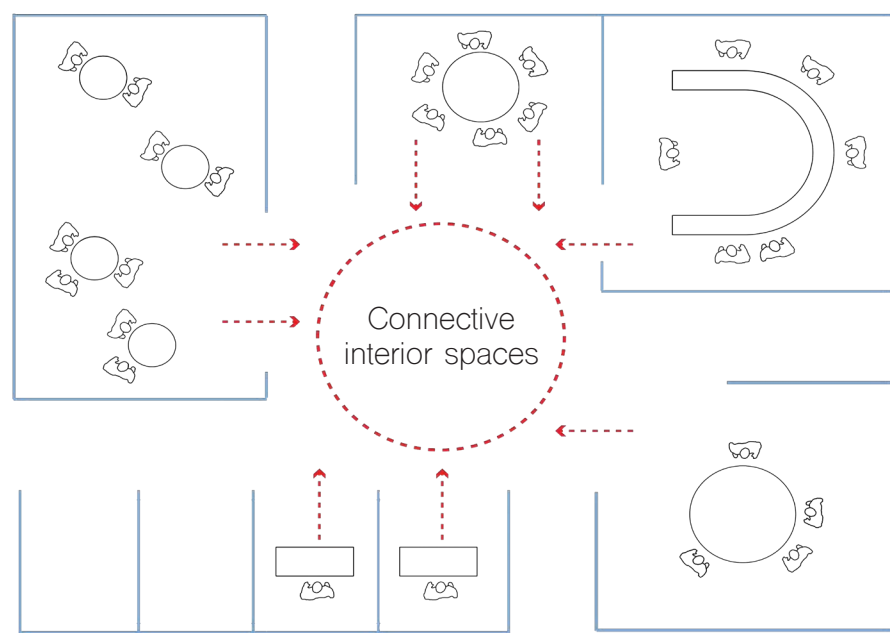
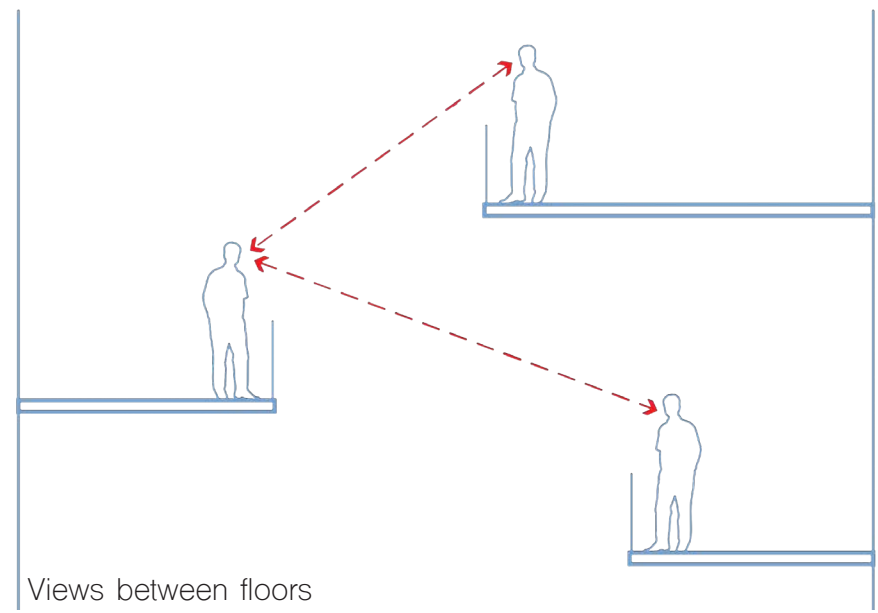
RNID (Royal National Institute for the deaf) aim to make life **inclusive** for the people who are deaf.



Conceptual Approach

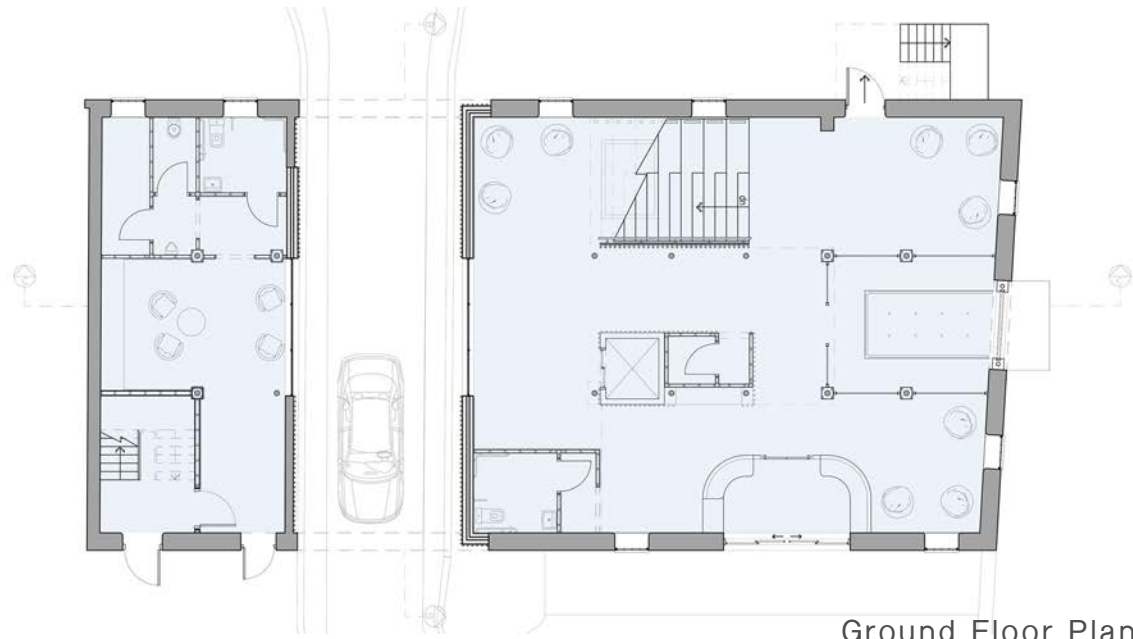
A connective wellbeing space focusing on the conceptual ideas of the layers of vision and focal points, the heightened saccadic eye movements of deaf individuals, and the rapid focusing and awareness in the peripheral vision.

The priority when designing for deaf individuals is the elimination of visual barriers and creating visual connectivity between floors. These principles have been applied through the series of floor levels in Thorpes Warehouse. The higher the floor level, results in an increased transparency and views.

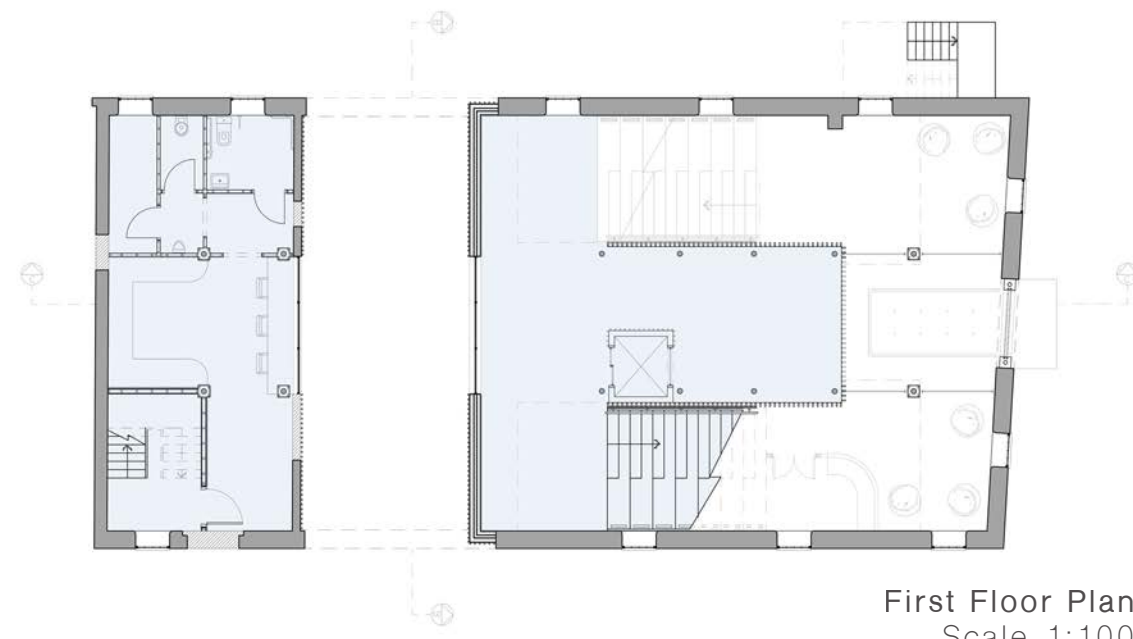


Floor Plans

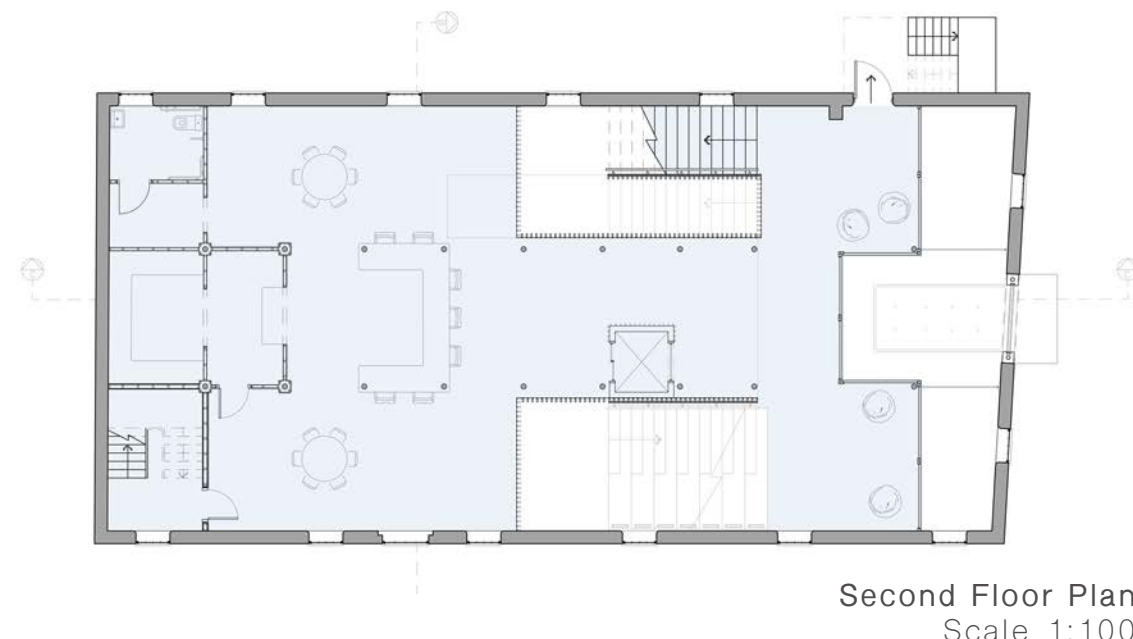
Long Section - visual connection between floors



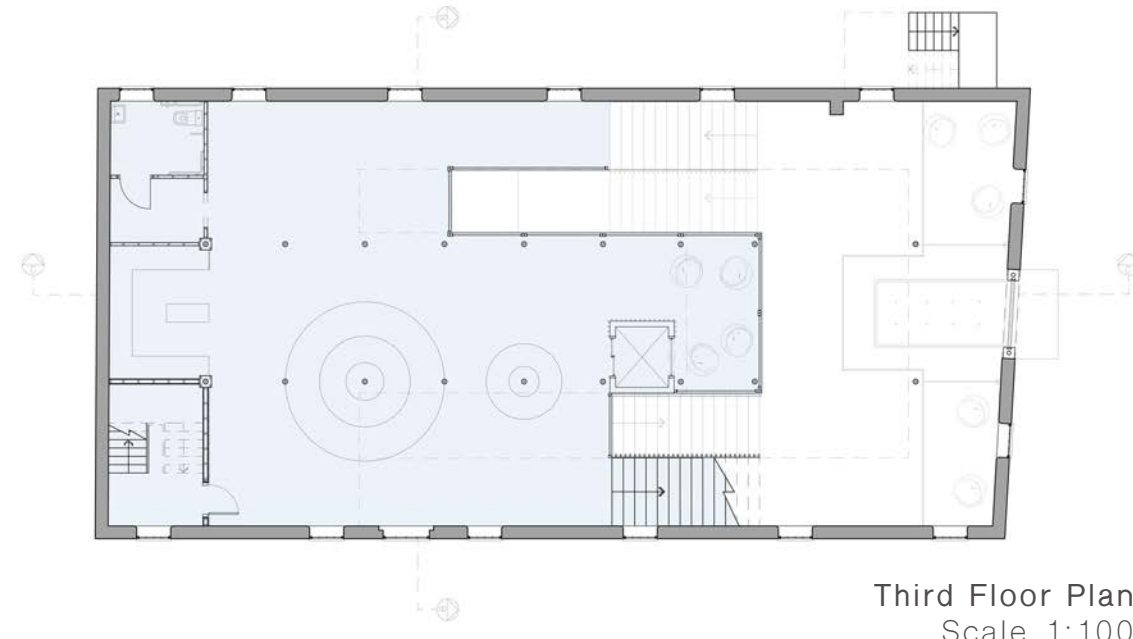
Ground Floor Plan
Scale 1:100



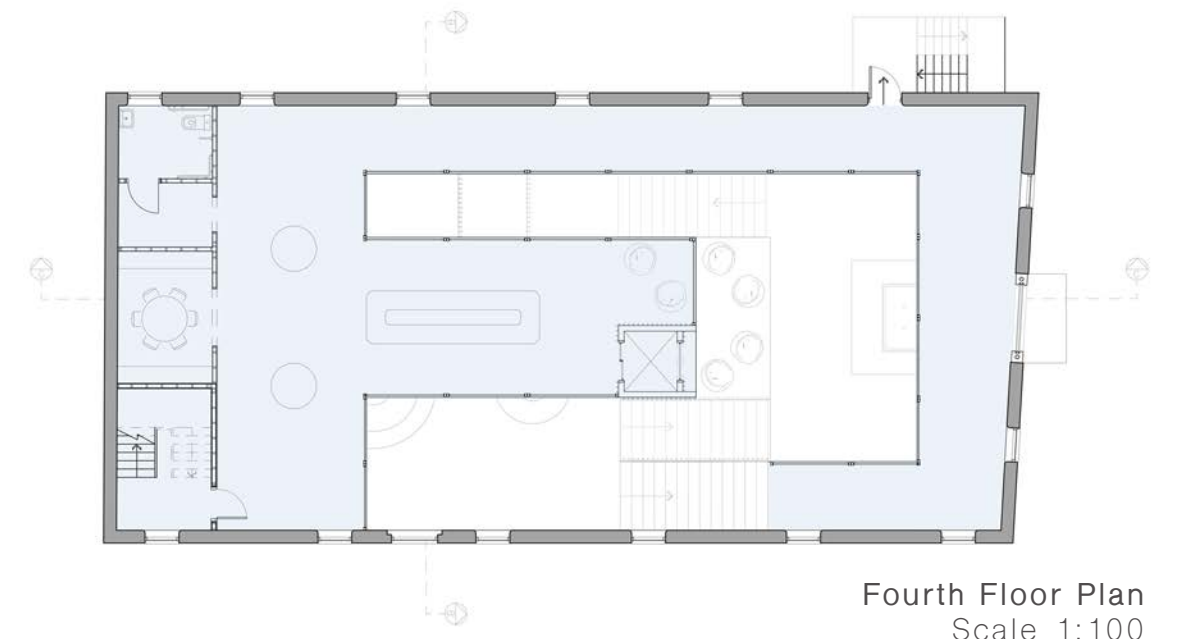
First Floor Plan
Scale 1:100



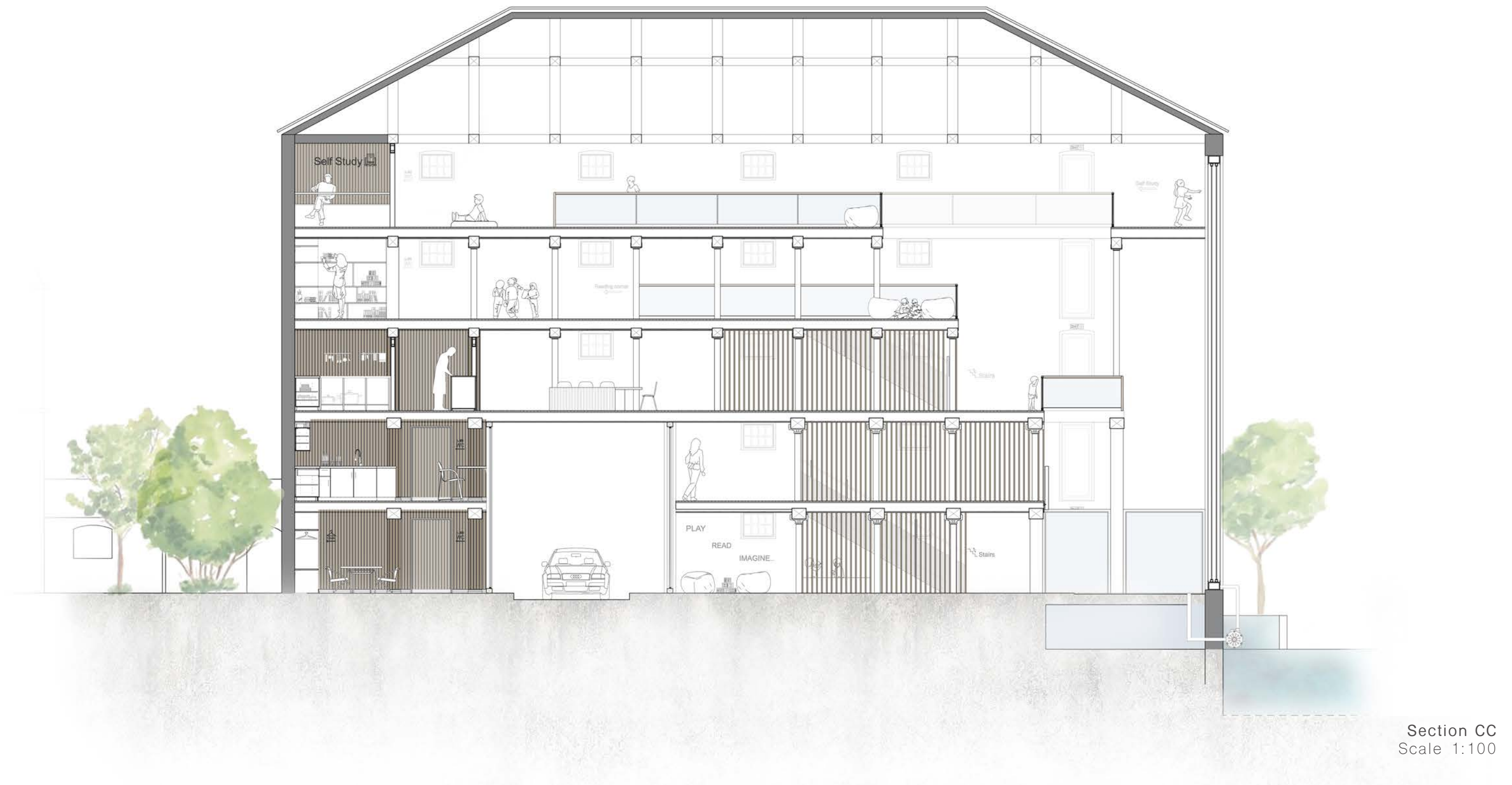
Second Floor Plan
Scale 1:100



Third Floor Plan
Scale 1:100



Fourth Floor Plan
Scale 1:100



Section CC
Scale 1:100

Visuals



Ground floor central 'hub' space - sensory water fountain and observation space
(See Ground Floor Plan 00)



Ground Floor - play 'den' area under stair space - displaying views to the outside through archway
(See Ground Floor Plan 00)



Fourth floor views to lower levels - displaying visual connection between and across floors
(See Fourth Floor Plan 04)



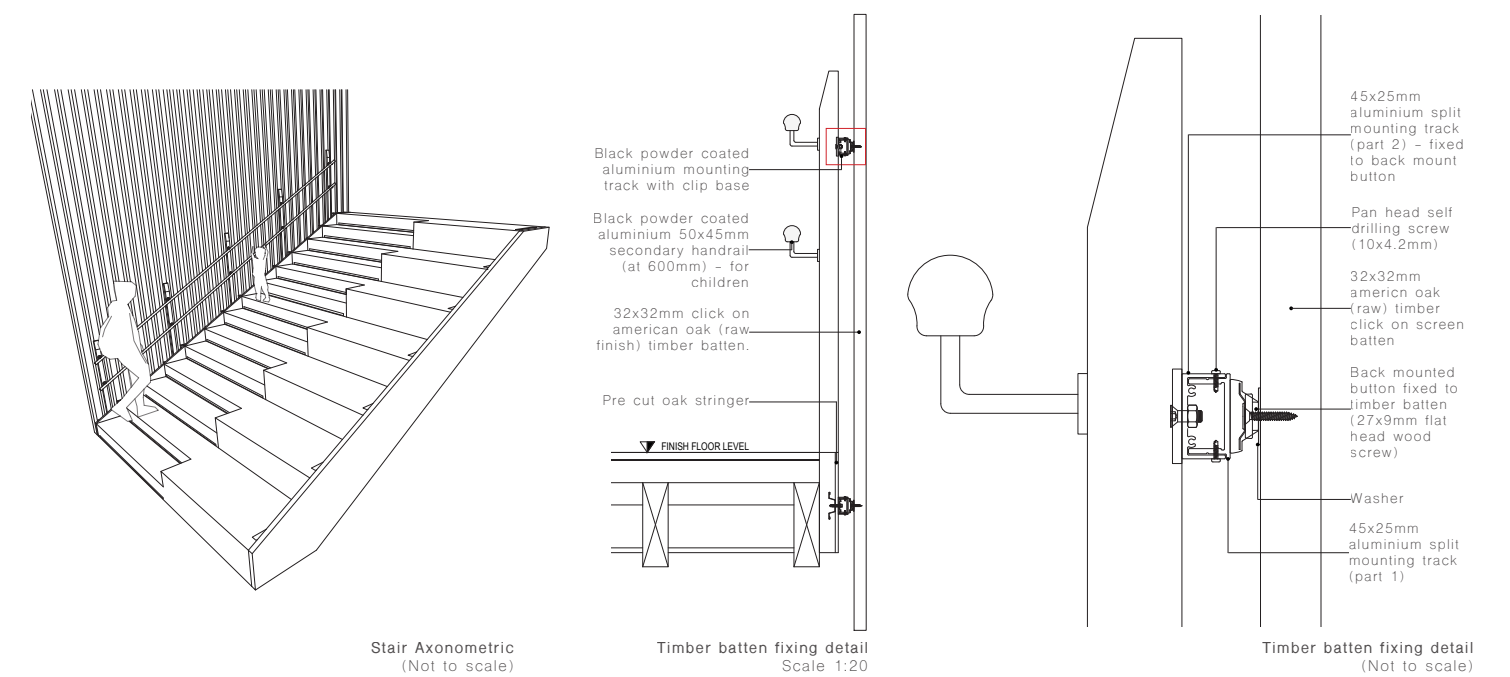
Third Floor multi-functional educational space - encouraging independence and educational development
(See Third Floor Plan 03)



Fourth Floor interaction with water wall feature - visible from each floor in the building
(See Fourth Floor Plan 04)



Section BB
Scale 1:50



Stair Axonometric
(Not to scale)

Timber batten fixing detail
Scale 1:20

Timber batten fixing detail
(Not to scale)