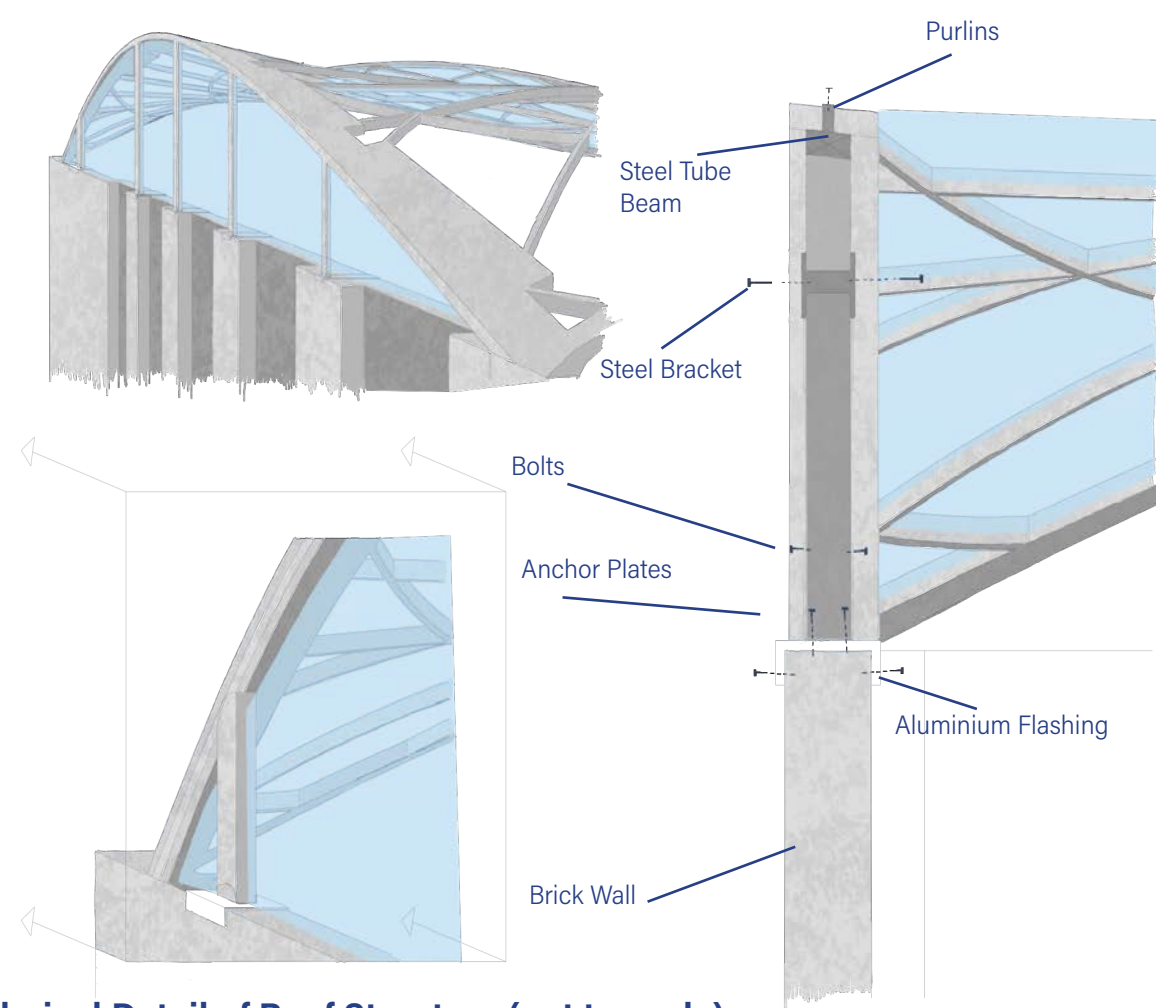
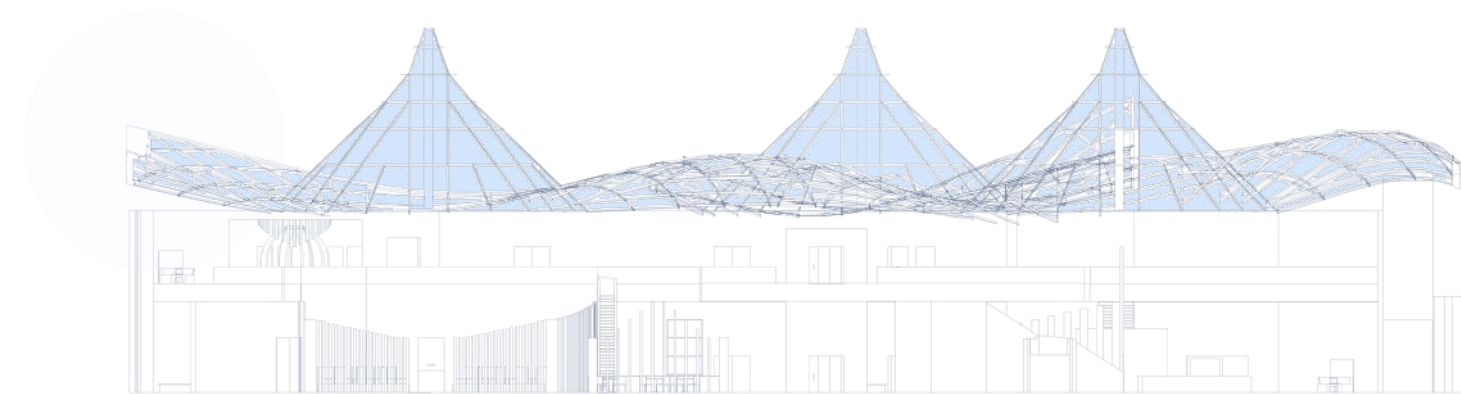


Roof Plan (not to scale)



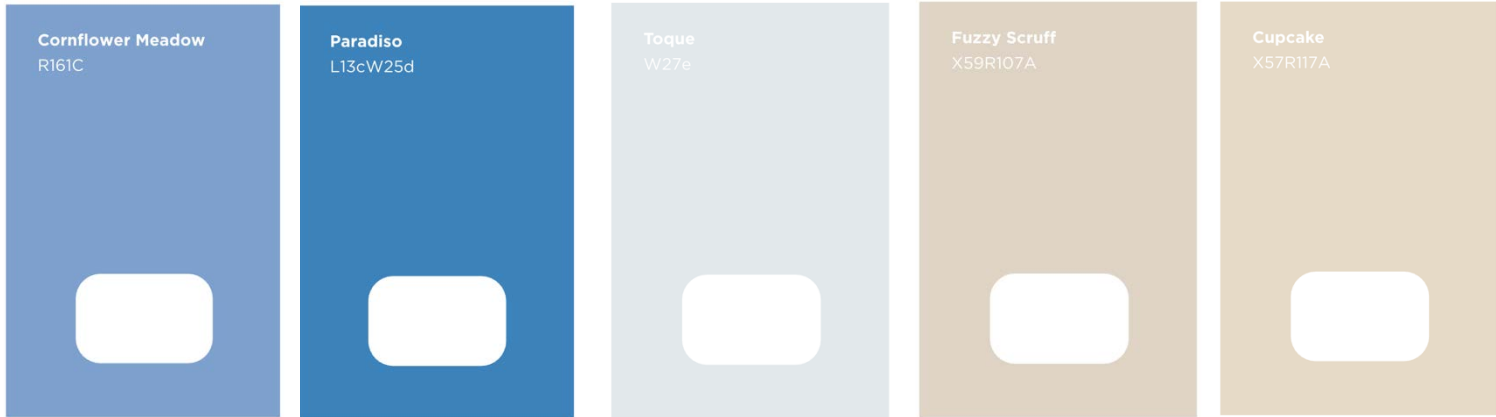
Rendered Technical Detail of Roof Structure (not to scale)



Short Section B1 (not to scale)

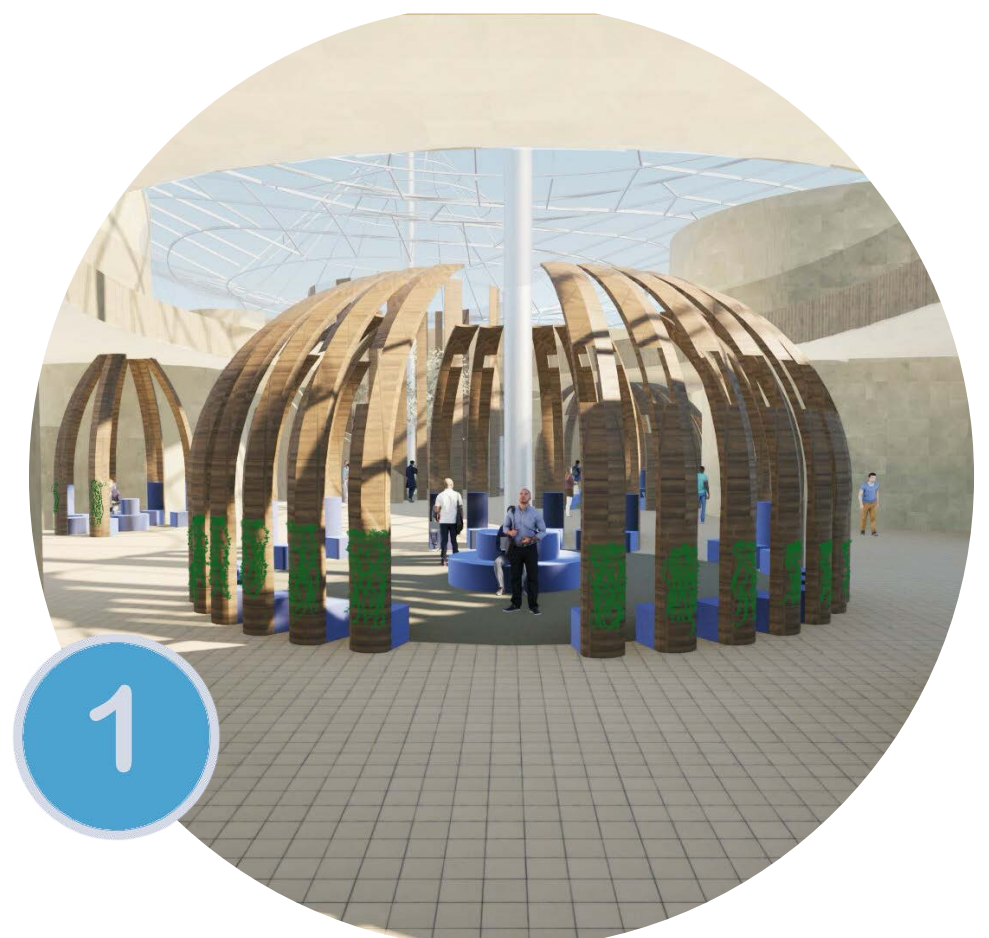
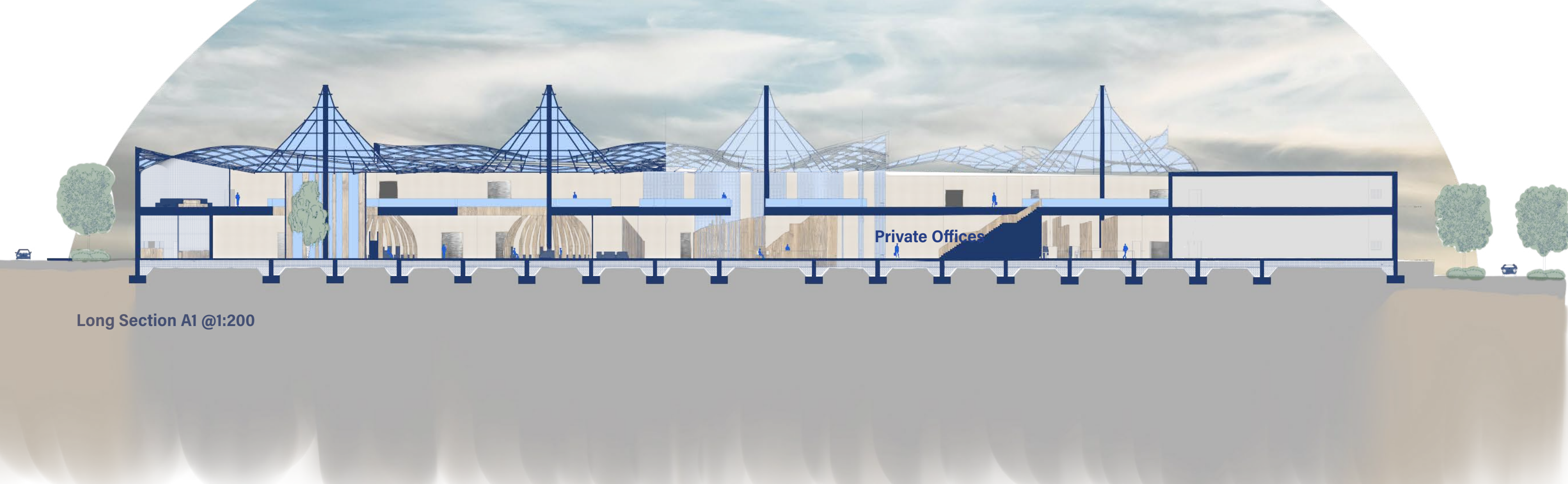


Materials Board - Materials Consideration



Material consideration has played a crucial role in supporting the core design strategies of The Baldock Interchange. In aligning with the project's emphasis on adaptability, history, and human centred ergonomical design, material choices were carefully selected to enhance both functionality and atmosphere. By incorporating elements such as reclaimed timber, weathering steel, and polished concrete, the materials not only respond to ergonomic and sustainability goal but also reflect the site's layered history and evolving purpose. These textures bring warmth and tactility to the space, inviting users to engage on a sensory level and reinforcing the balance between past and future that the project seeks to achieve.

The use of material that change and age over time was intentional, echoing the projects narrative of transformation and continuity. Aspects like untreated timber and oxidizing metals were chosen to allow the building to evolve alongside its users, creating a dynamic and responsive environment. This approach ensures that the design is not static but rather lives and breathes with its occupants – contributing to a space that is emotionally resonant, contextually grounded, and enduring in its relevance.



Rendered Visual of The Working Hall

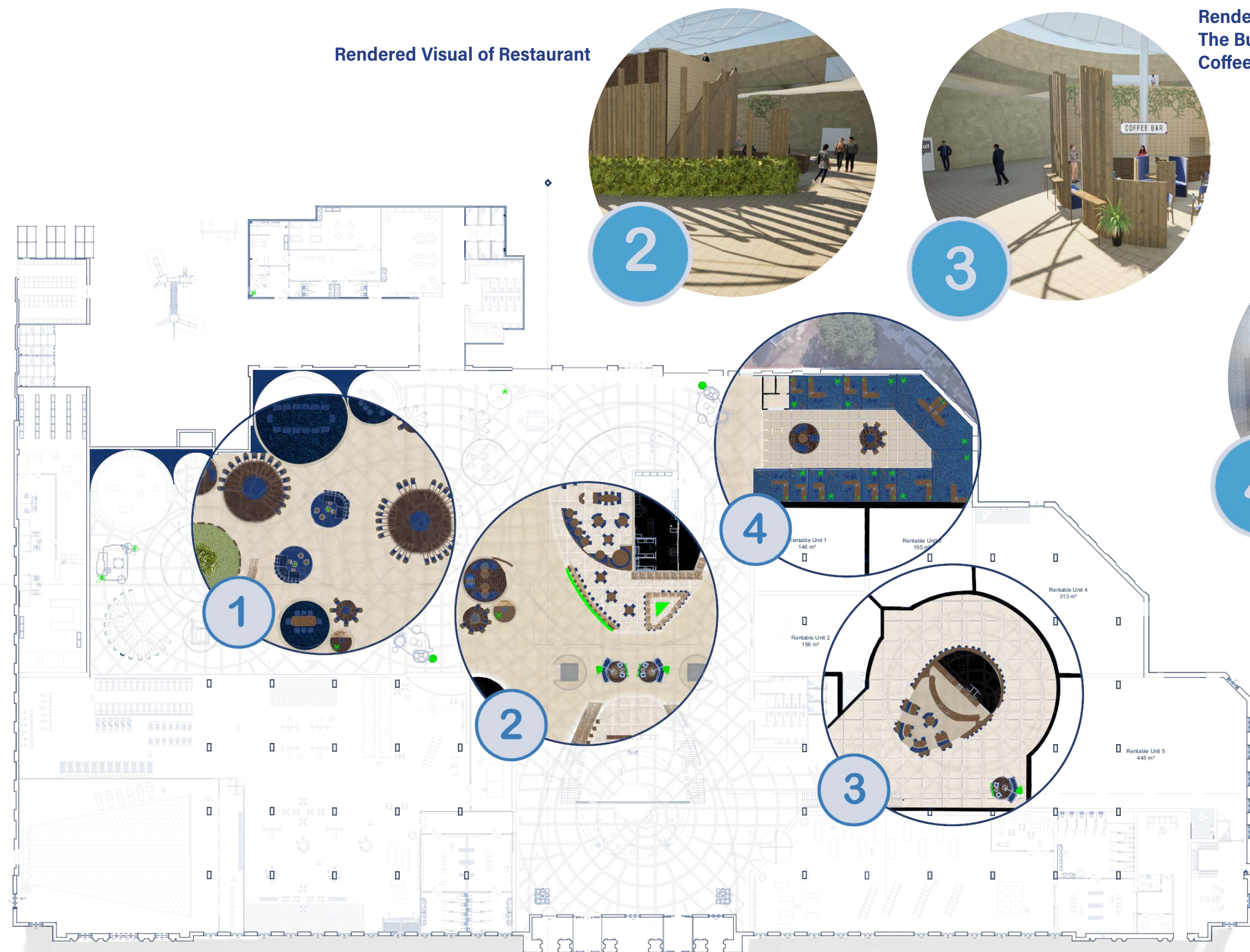
Rendered Visual of Restaurant



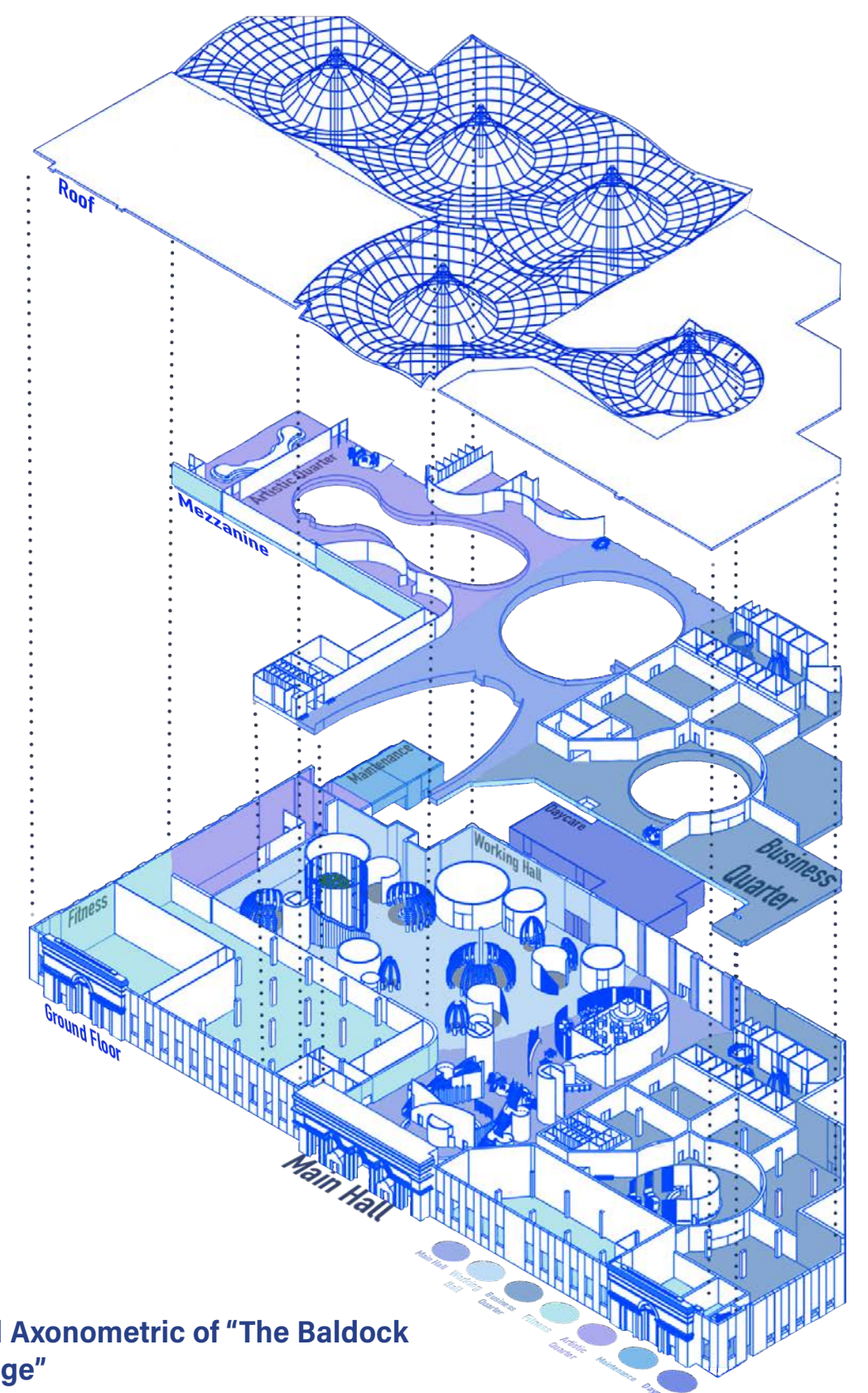
Rendered Visual of The Business Quarter, Coffee Bar



Rendered Visual of The Private Offices



Rendered Ground Floor Plan (not to scale)

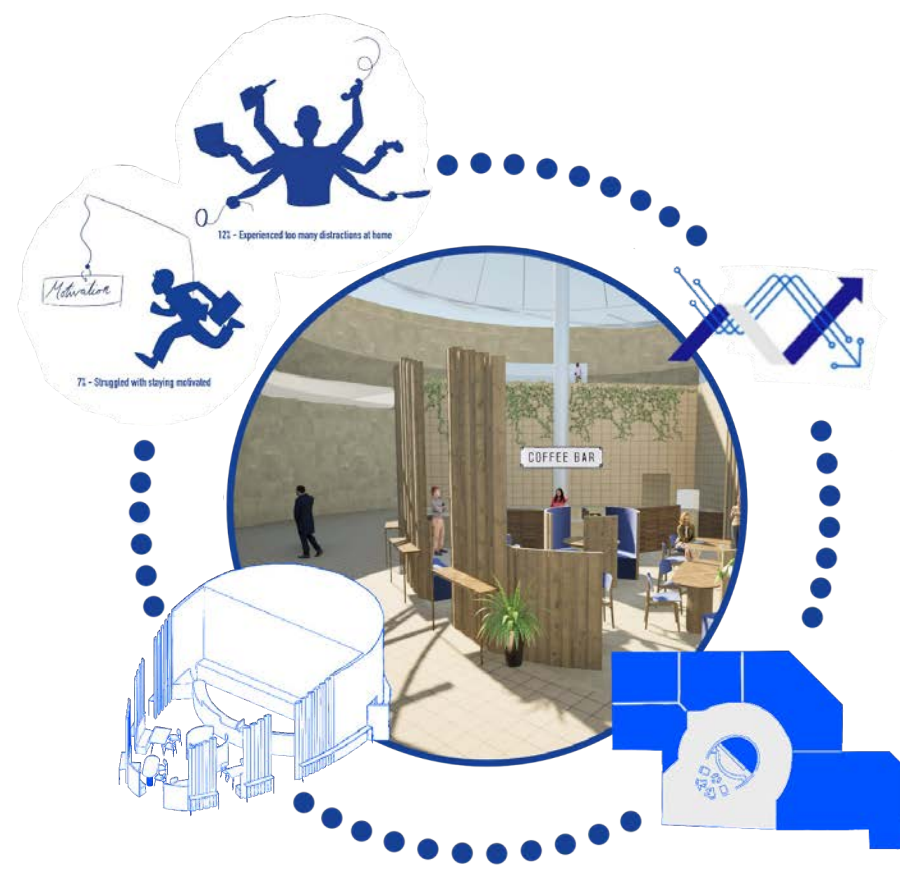


Rendered Axonometric of "The Baldock Interchange" (not to scale).



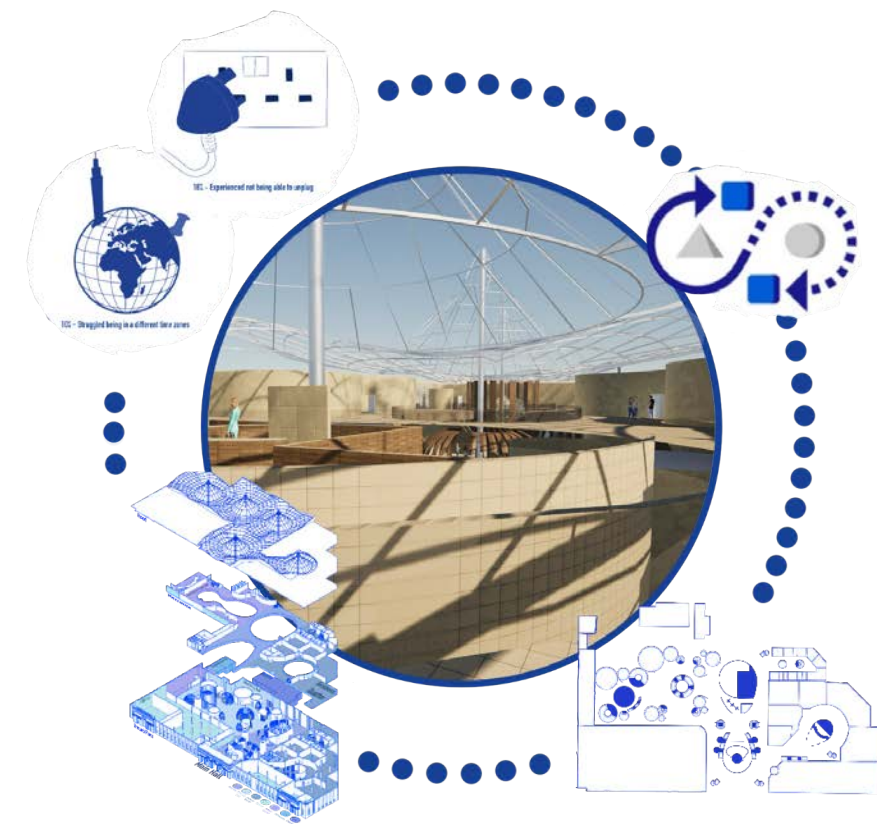
Open + Enclosed -

With 20% of remote workers facing collaboration and communication challenges, this design offers a balanced mix of private and open spaces to support diverse workstyles. A modular layout with varied spatial typologies provides choice, control, and adaptability - promoting inclusivity, functionality, and evolving with users' needs.



Braiding Social + Business -

With 12% of remote workers facing distractions and 7% struggling to stay motivated, this design integrates social and work spaces to foster focus, motivation, and community. Guided by biophilic principles, the environment supports well-being, encouraging natural interaction and a healthier, more engaging work-life balance.



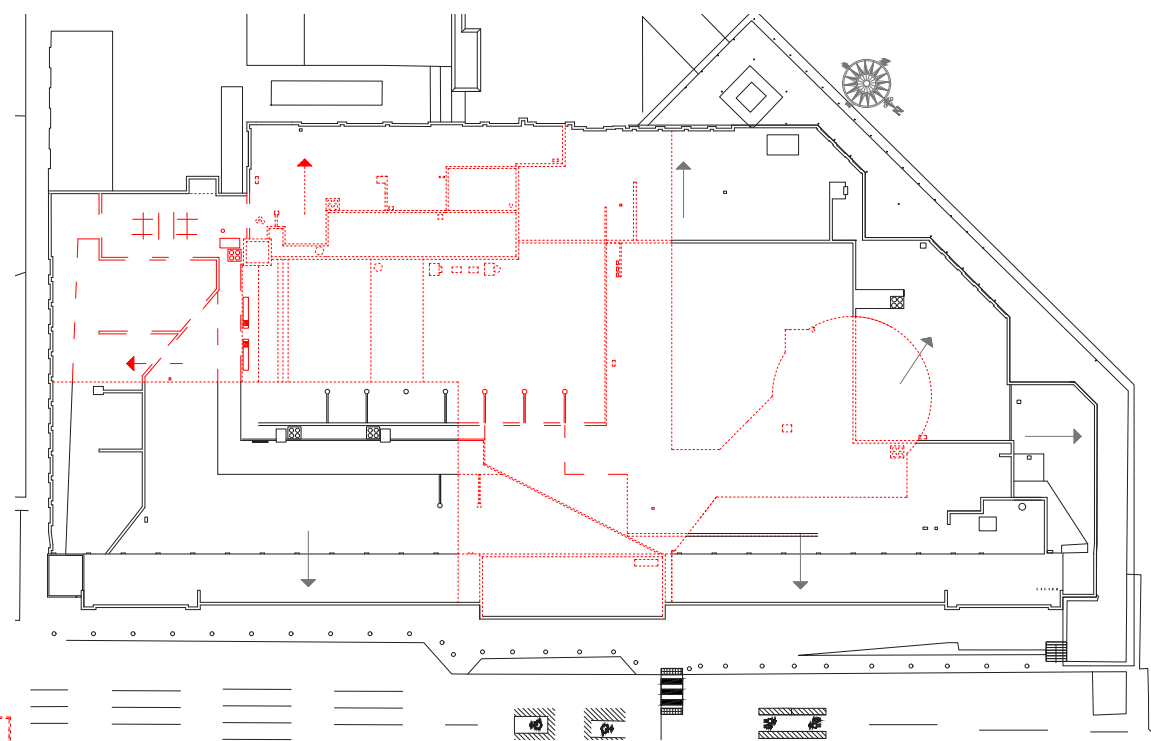
Fixed to Fluid -

With 10% of remote workers struggling to communicate across time zones and 18% unable to unplug, this design offers adaptable, ergonomic workspaces that promote balance and connection. Flexible layouts, movable furniture, and multimodal settings support diverse work styles, allowing users to shift easily between tasks and needs throughout the day.

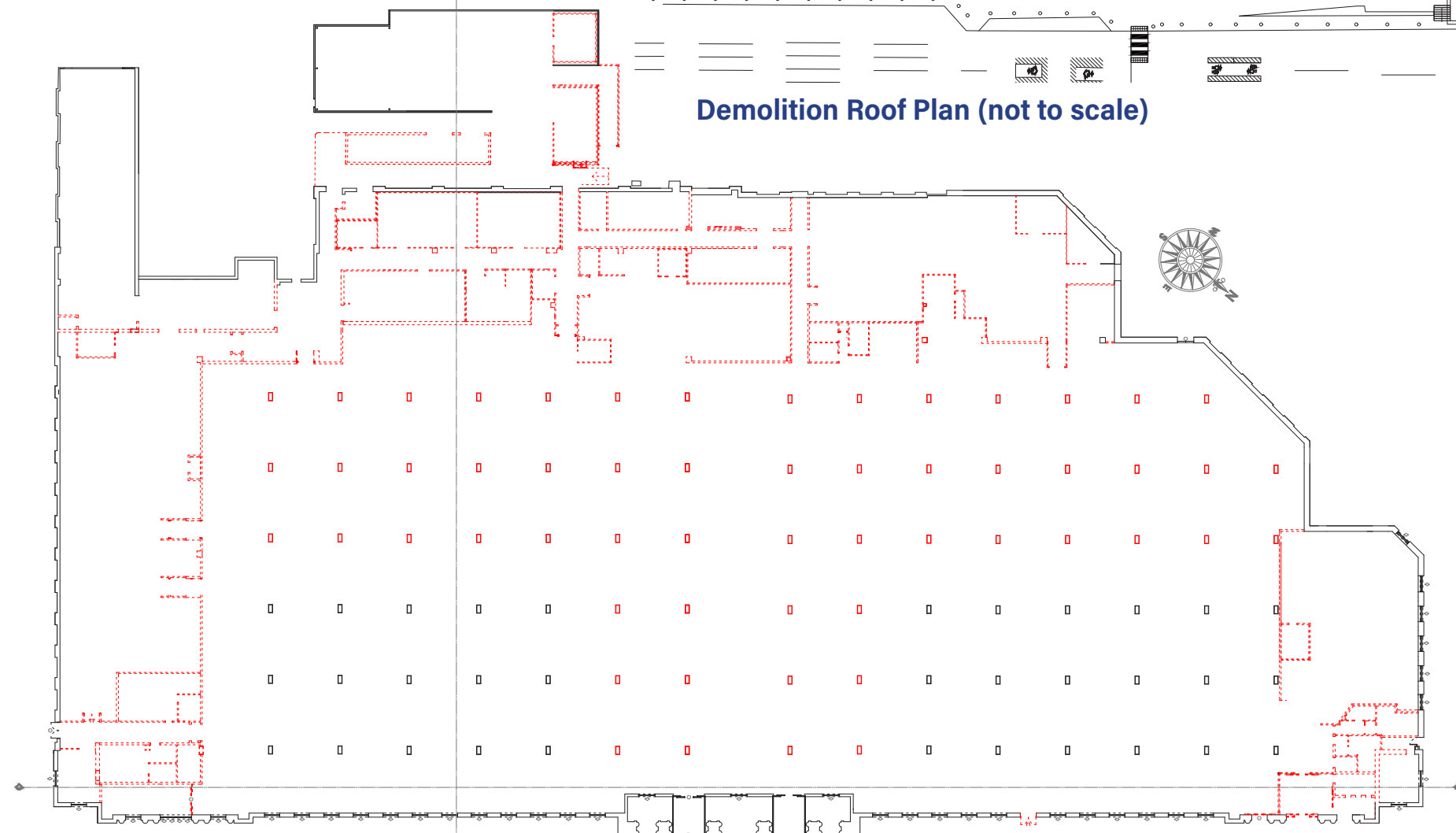


ME + WE -

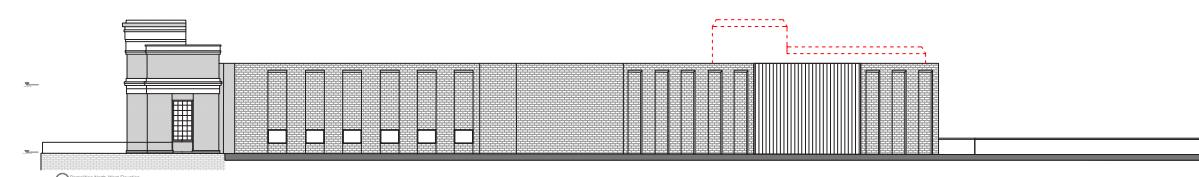
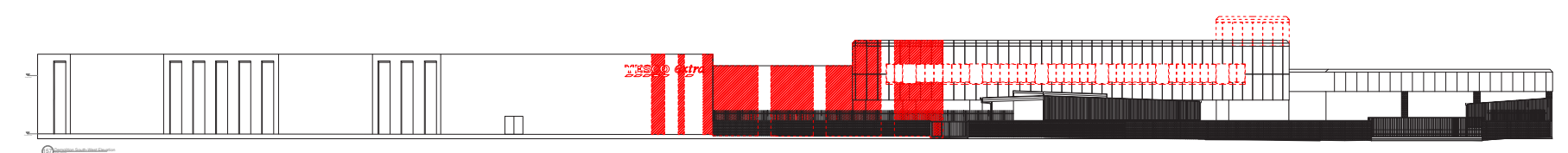
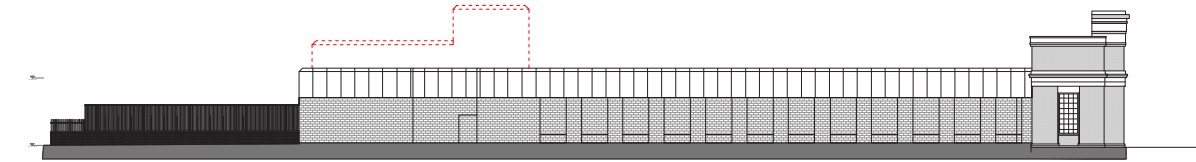
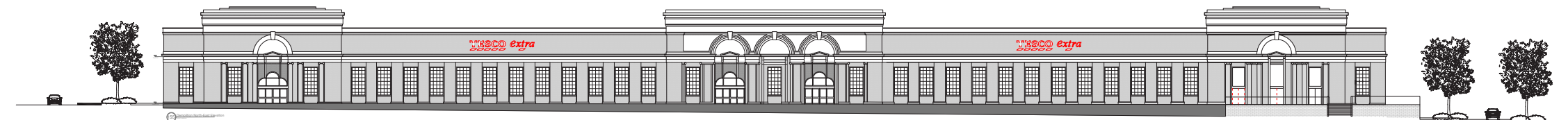
With 20% of remote workers experiencing loneliness, this design brings the vibrant, collaborative spirit of London and Cambridge to Baldock. Blending formal and informal shared spaces, it supports both focused work and teamwork, encouraging connection and seamless transitions between tasks.



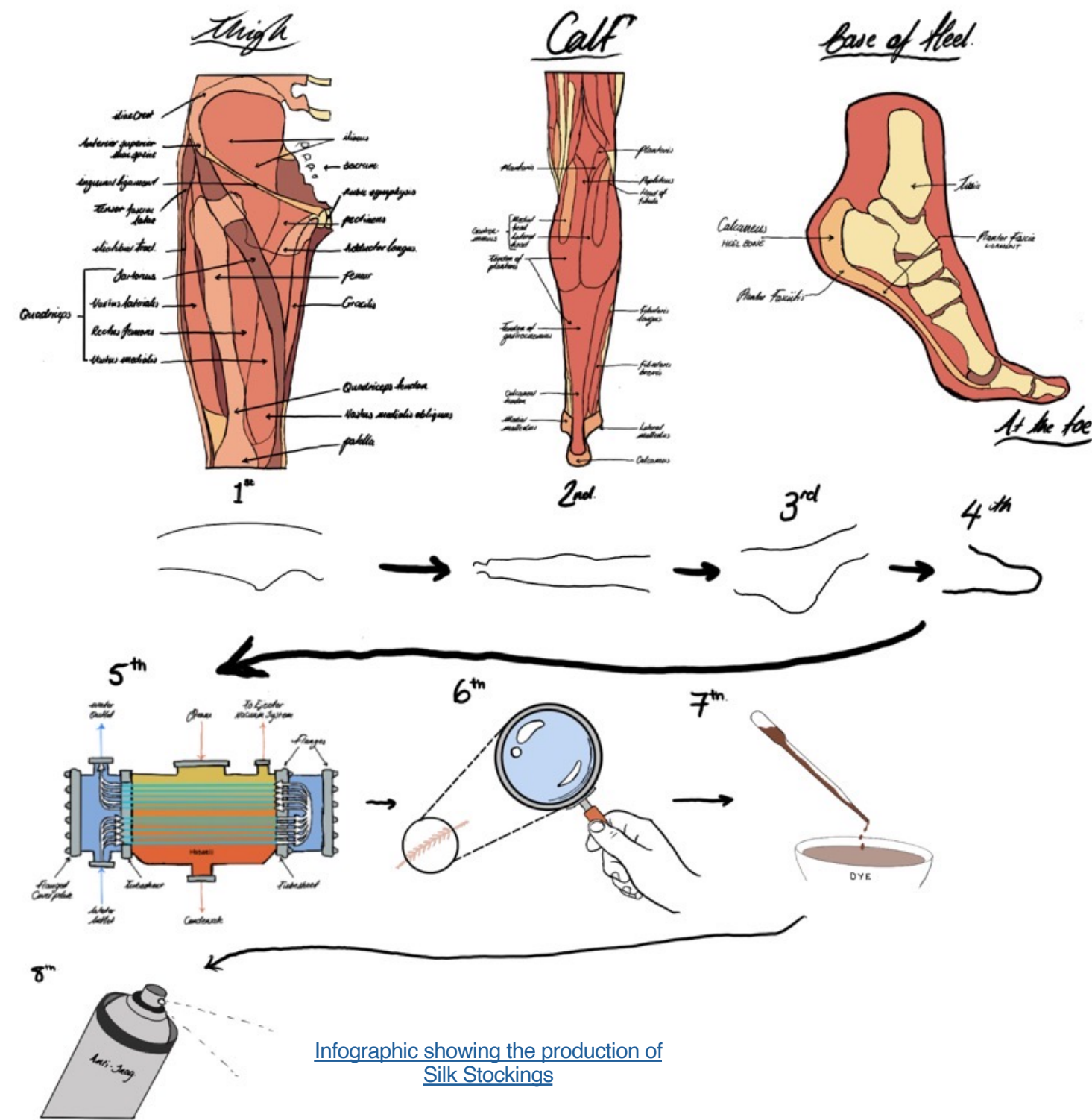
Demolition Roof Plan (not to scale)



Demolition Floor Plan (not to scale)



Demolition Elevations (not to scale)



Infographic showing the production of Silk Stockings



VS



Infographic showing the relationship between income and likelihood to be working from home



History of the Building:

Looking at the actual building on my site, being what is currently a Tesco extra supermarket, it was formerly a manor house, which was converted into a film studio after it burnt down. The film studio swiftly folded, and the building was converted into a factory for Kayser and Bondor, producing ladies silk stockings, although during World War II, like most clothing factories, were enlisted to produce parachutes. The art deco façade still stands with it being converted into the supermarket it is now in the 1980s.

Silk Stockings:

With the main and current history of the building being it was a silk-stocking factory, I decided to look at the production of silk stockings and how they are made, and what the process line is like.

GPE
Greater together

Situated in historic Farringdon, SIX is a Fully Managed workplace offering newly refurbished offices and a plethora of shared spaces, including a communal lounge and boardroom, a rooftop terrace and shared kitchen and a wellness studio. Every private office space is fully managed by GPE, meaning we take care of everything, making your life hassle-free. Elegantly honouring the area's rich history and character, the spaces combine carefully selected design elements and materials, with a commitment to flexibility, sustainability, and wellbeing. The area has distinctive architecture and superb connectivity, with Farringdon, Chancery Lane and the Thameslink a short walk away.



Vision:

My aim is to create a space for those who work from home, outlining the issues with working from home and how my space can combat them.

Working from home and working on a hybrid schedule refers to the practise of performing occupational duties from a residence or a space other than the main host of the business, instead of commuting to the host building.

Working from home and hybrid schedules rose in popularity during the 2020 coronavirus pandemic, due to workers not being able to leave their homes during the lockdowns as it was not safe/viable to travel to work and sit within close proximity to others.

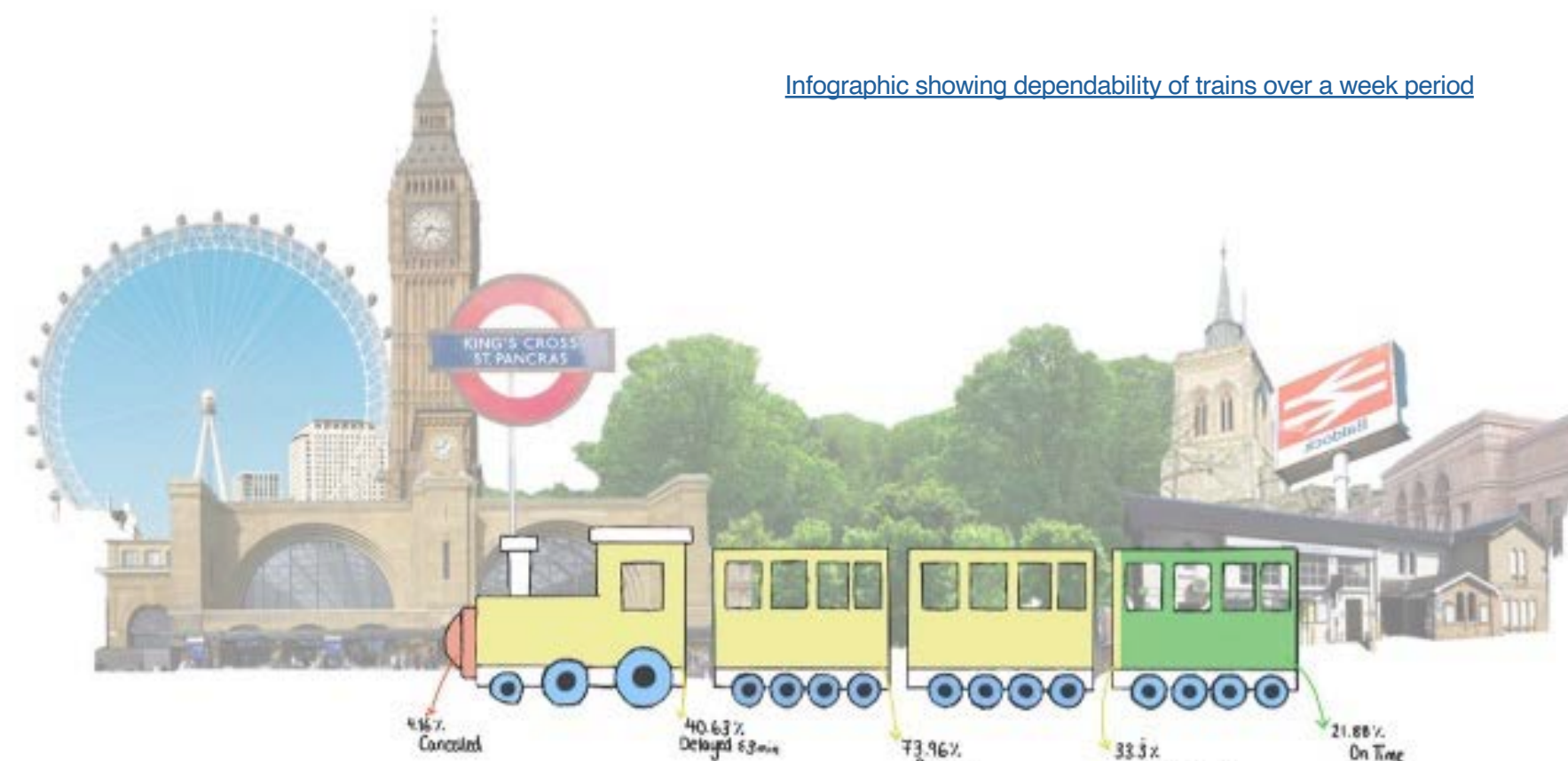
Small Town:

- **Transportation** – Ideal for people who don't like commuting
- **Community** – A stronger sense of community.
- **Noise** – Generally quieter than a big city
- **Cost of living** – Generally cheaper than a big city
- **Job Opportunities** – fewer jobs available in smaller towns leading to a longer commute to work
- **Entertainment** – Less choice
- **Local Businesses** – more small businesses
- **Conformability** – more likely to have to conform to social norms

Big City:

- **Social Life** – many social opportunities.
- **Culture** – Diversity is celebrated
- **Transportation** – well-connected systems
- **Employment** – Often more jobs in a bigger city
- **Noise** – City life can be busy and loud
- **Mental Health** – Some studies show that living in the city can increase the likelihood to experience anxiety
- **Pollution** – Can be unhealthy due to higher rates of pollution

Infographic showing dependability of trains over a week period



Steelcase

Steelcase is a global design and thought leader in the world of work. Along with our expansive community of brands, we design and manufacture innovative furnishings and solutions to help people do their best work in the many places where work happens.





The Baldock Interchange A Human-Centred Hybrid Workspace

Transforming a redundant supermarket into a future-ready professional and community hub.

The Baldock Interchange transforms a redundant supermarket into a vibrant hybrid workspace, offering a metropolitan-quality professional and social hub in a small-town context. Rooted in adaptive reuse, the scheme preserves the building's historic façade and industrial fabric while radically reconfiguring its interior to serve a modern, hybrid workforce. Ergonomics, daylighting, and biophilic interventions are integrated alongside wellness, childcare, and hospitality functions — fostering both productivity and community well-being. This submission exemplifies a strategic, future-ready approach to adaptive reuse, where heritage conservation and progressive working culture coexist within a reimagined civic landmark.

