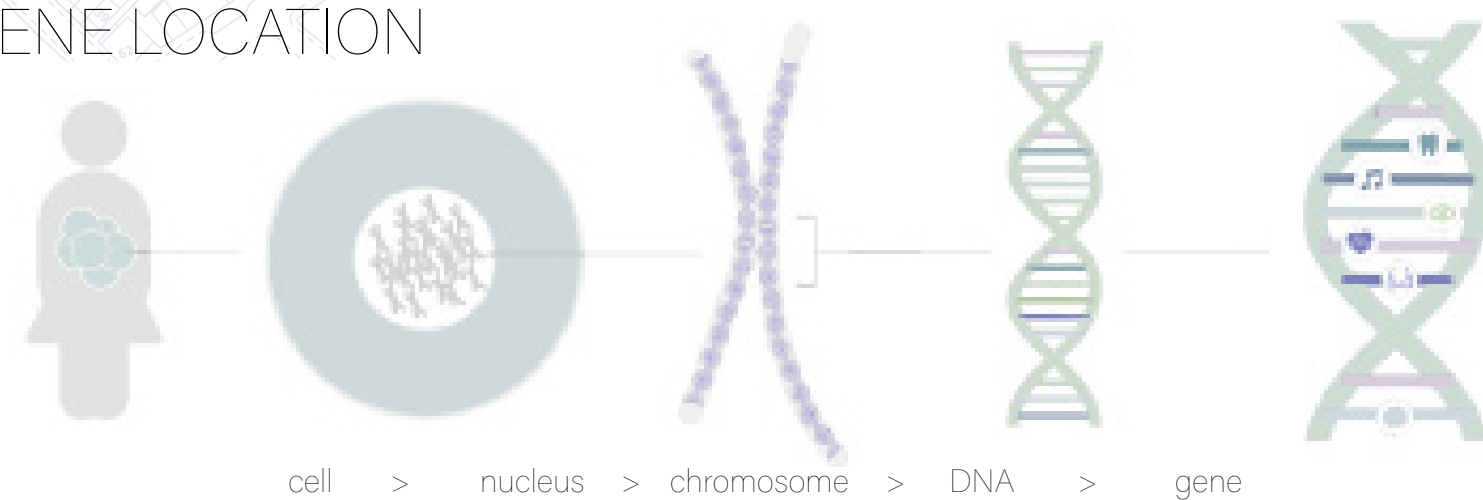
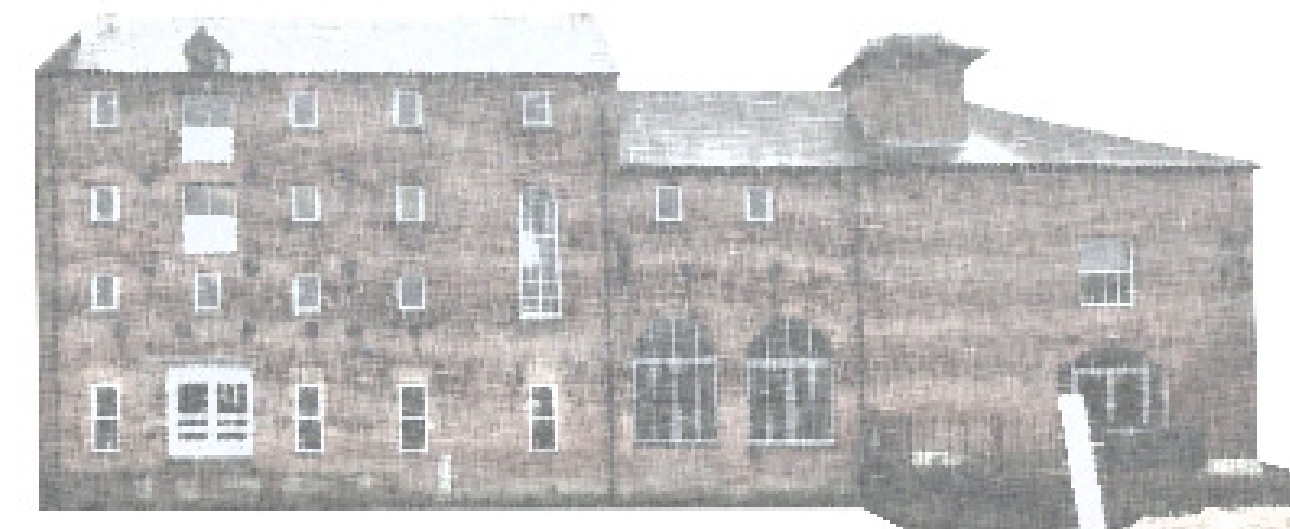


THE GENOMILL

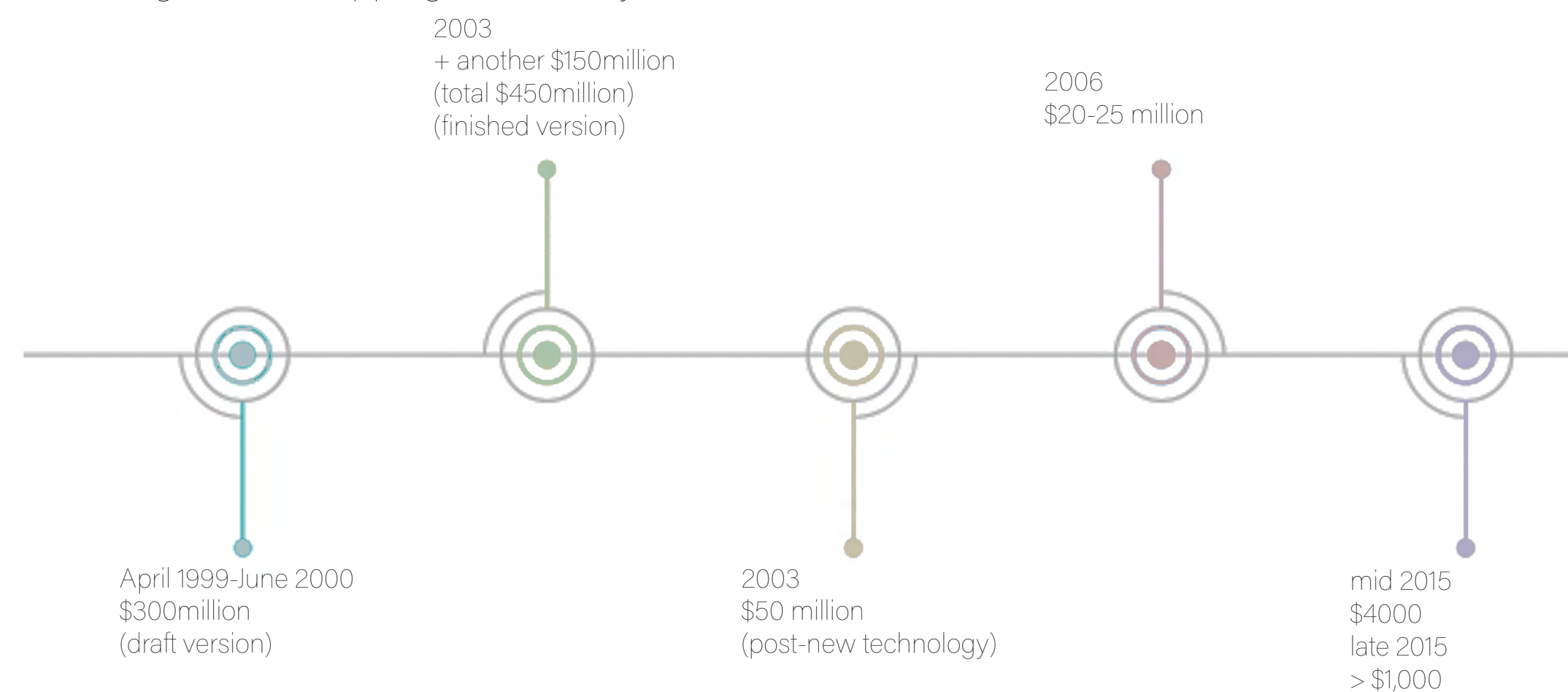
Genome mapping is a method of understanding our DNA, capable of revealing genetic vulnerabilities to certain illnesses. By 2050, UK population is expected to double what it is today; an aging and growing population means national health services face inevitable privatisation; the genomill creates a closed economy; the healthcare system, supports itself as well as those who use it - future proofing our NHS, improving life quality and expectancy - the future of healthcare.



Host building: Navigation House in Newark, Nottinghamshire
Victorian solid brick external structure
Supporting structural concrete columns within
Historically an oil mill
Situating on the bank of the River Trent



genome mapping affordability

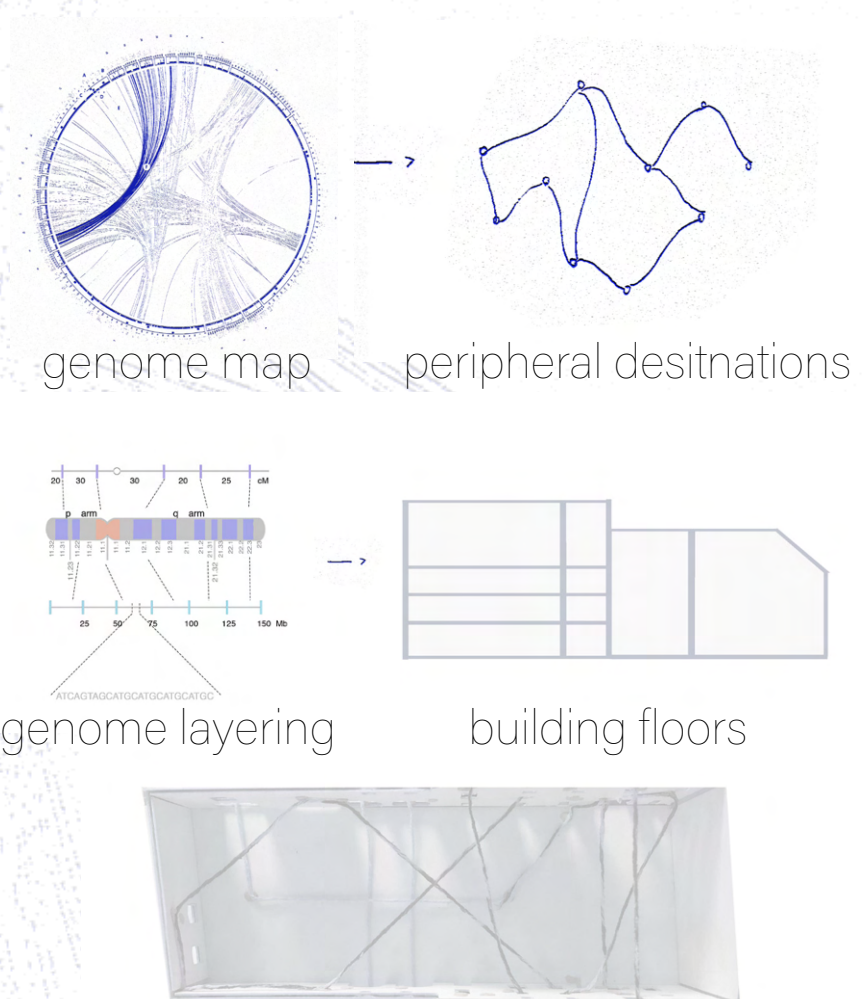


Navigation house is to be one of a series of national nutrigenomics production centres, creating tailored nutrition for use in preventative healthcare. At the facility, individual's genome maps are tested, and a preventative healthcare diet plan produced. They are then told what on-site grown produce to collect.

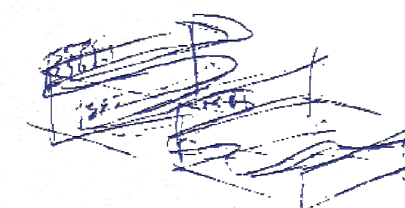
The user follows a journey through the space, collecting produce, threading in and out of the building and circulating through the use of bridges, physically representing the genome mapping and layering experience, as they go on their genome discovery journey.

CONCEPT
DEVELOPMENT

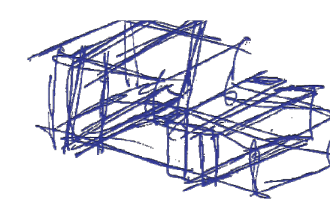
BRIDGING
IDEOLOGY



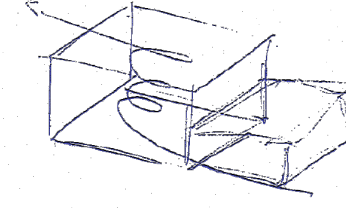
DESIGN DEVELOPMENT



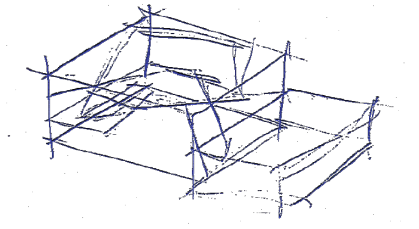
mobius forms



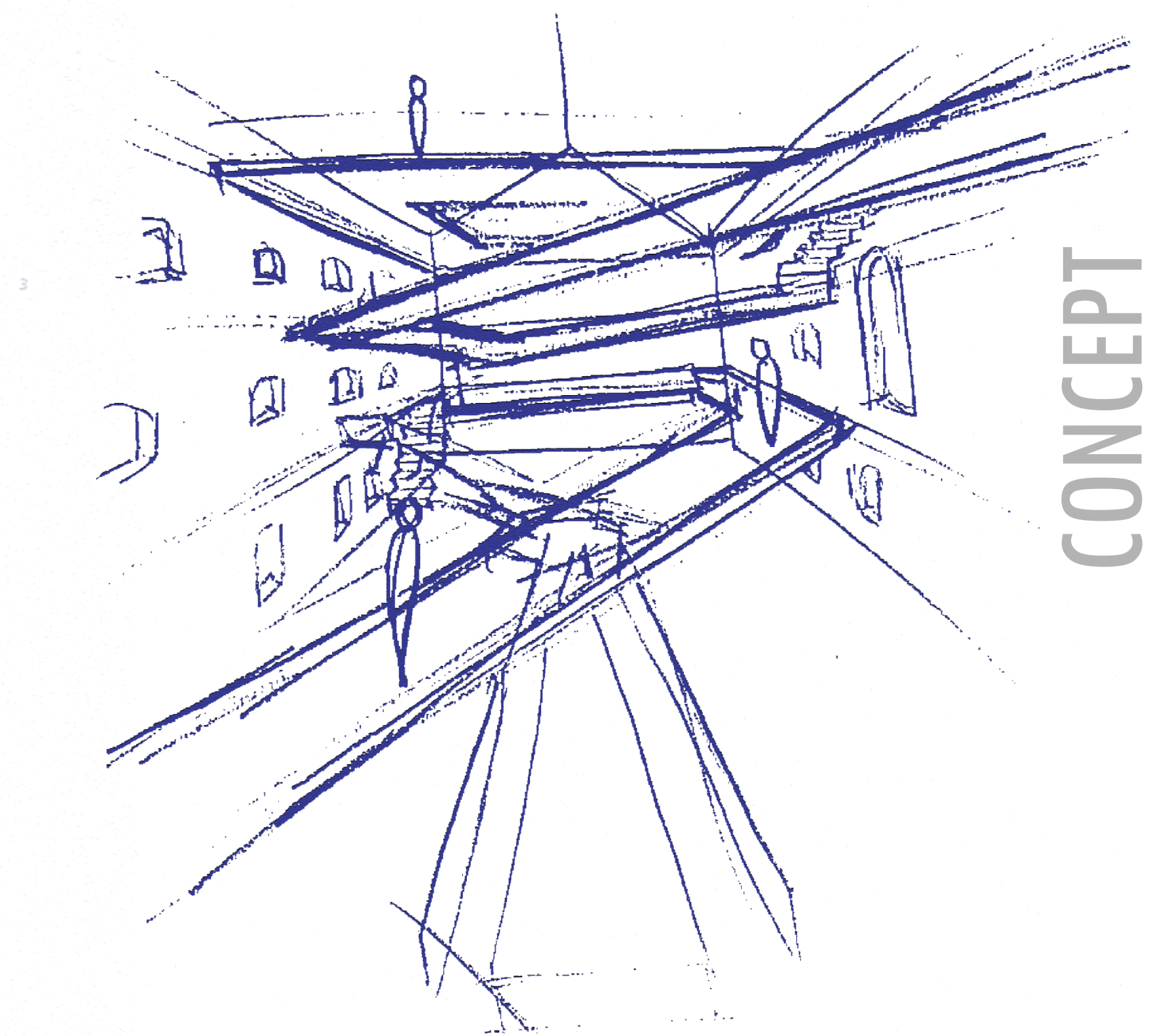
historical pathways



ventilation

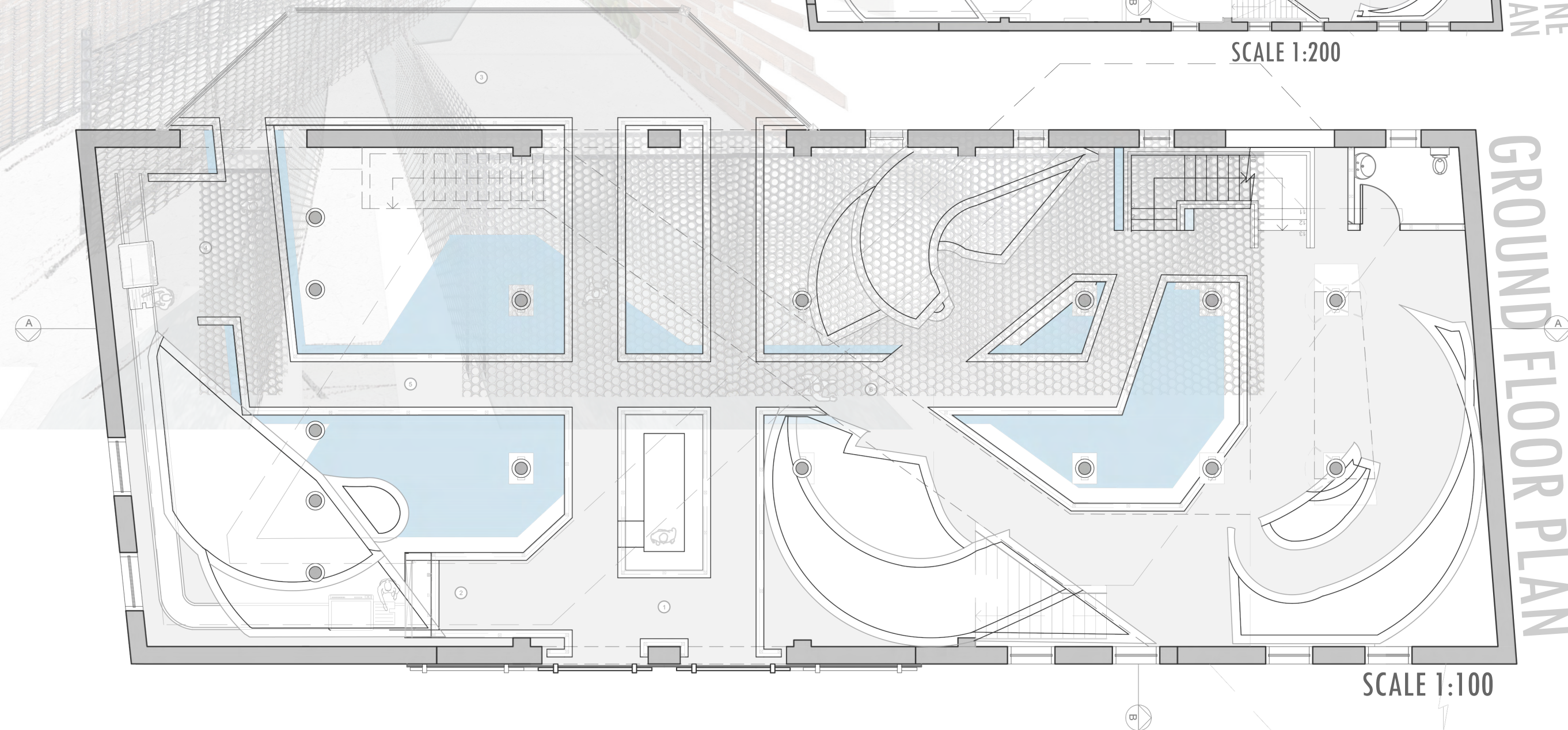
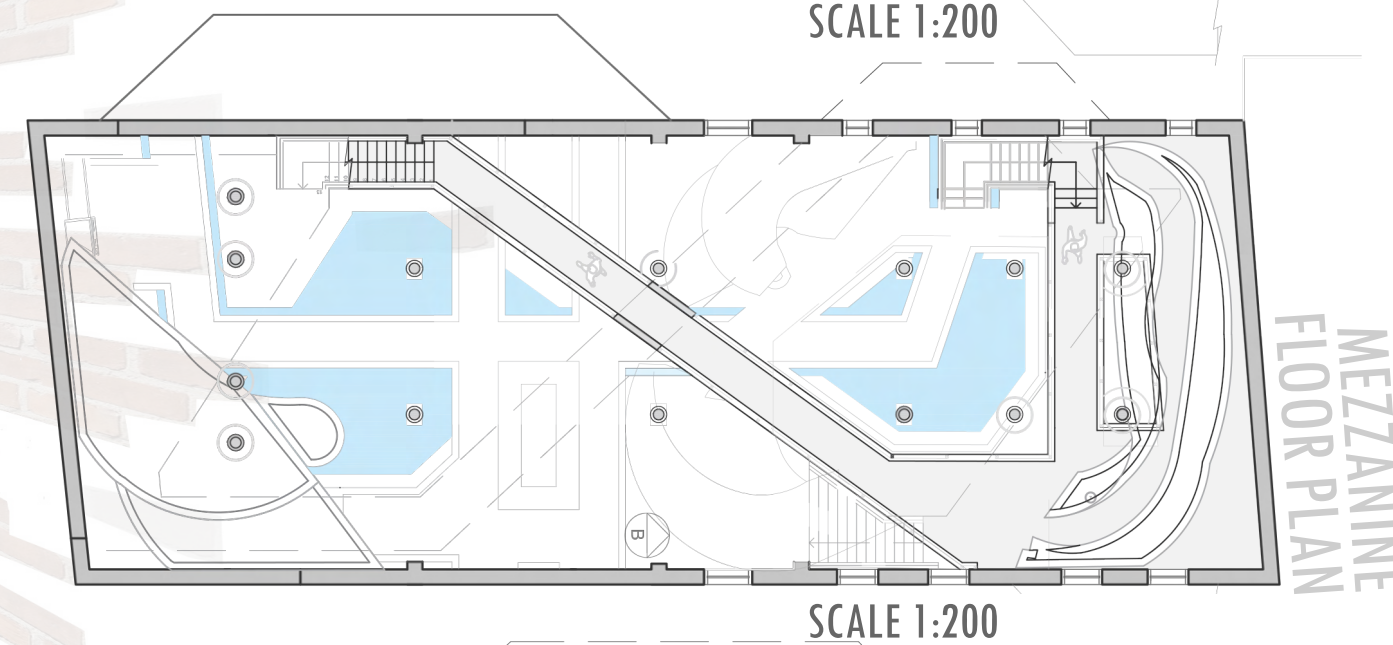
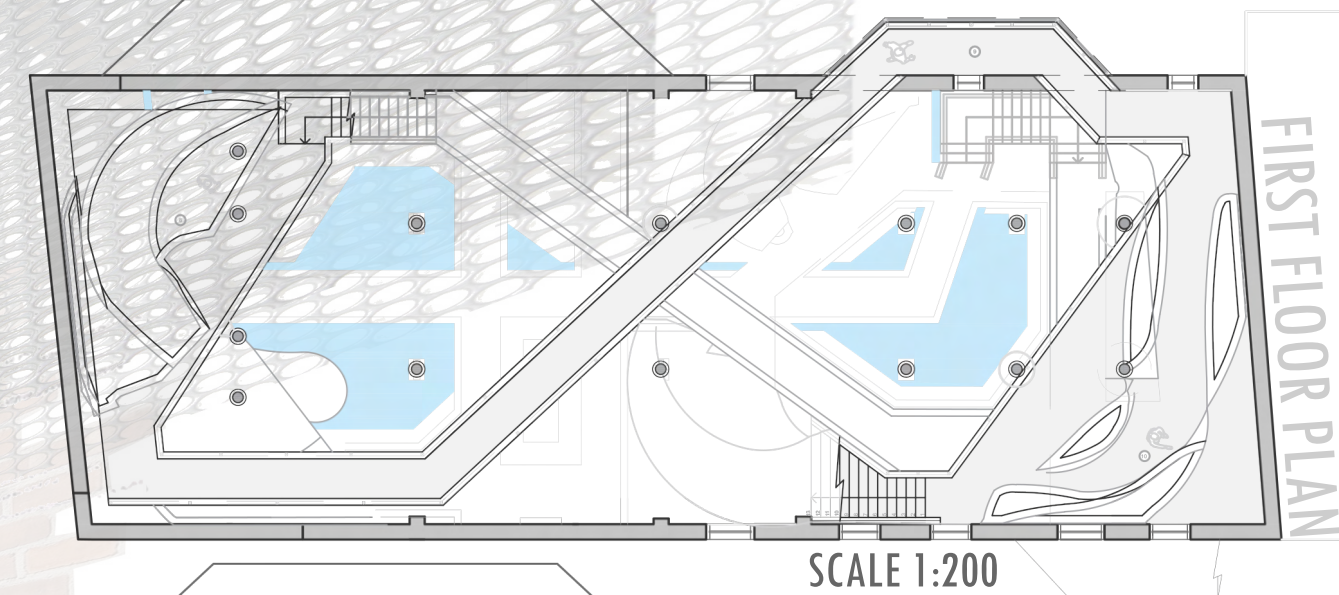
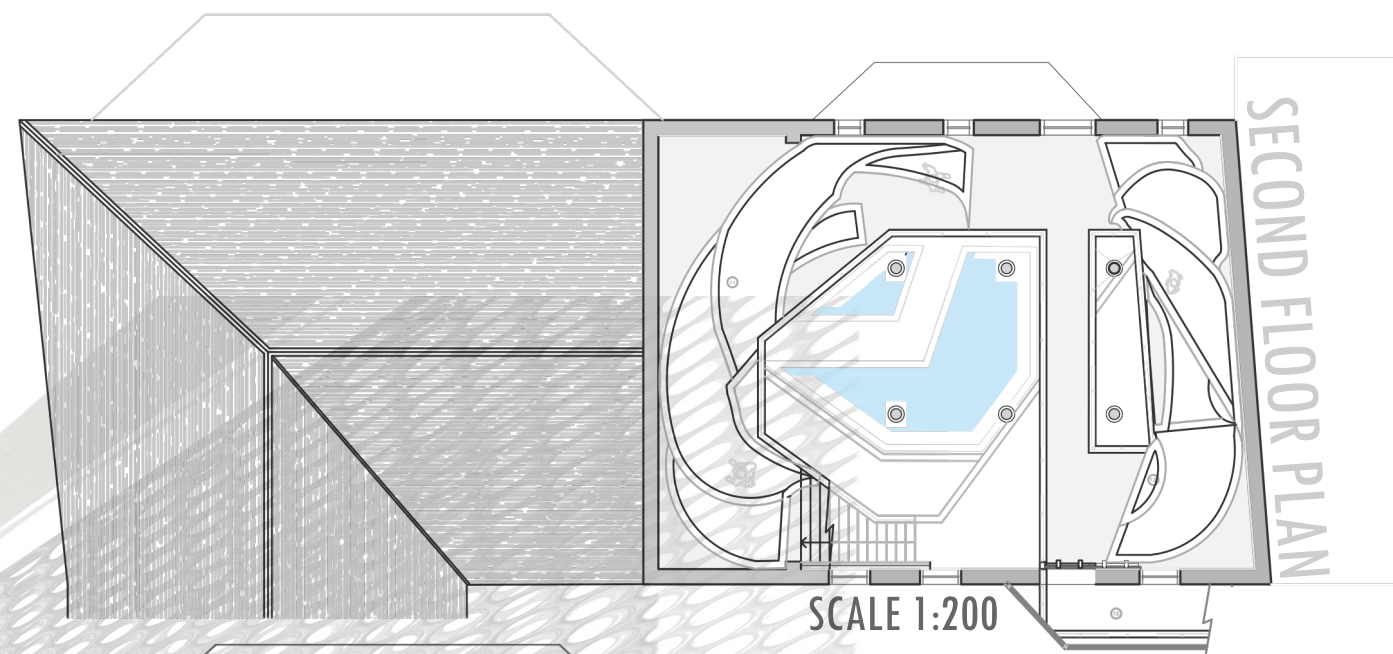


layering and bridging



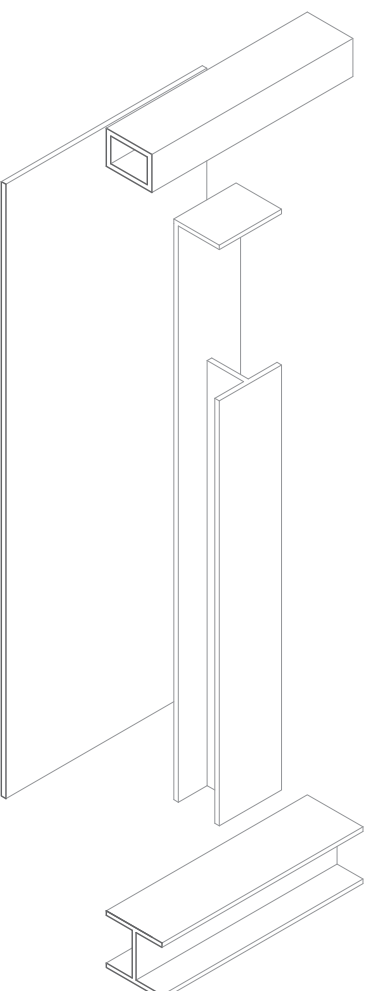
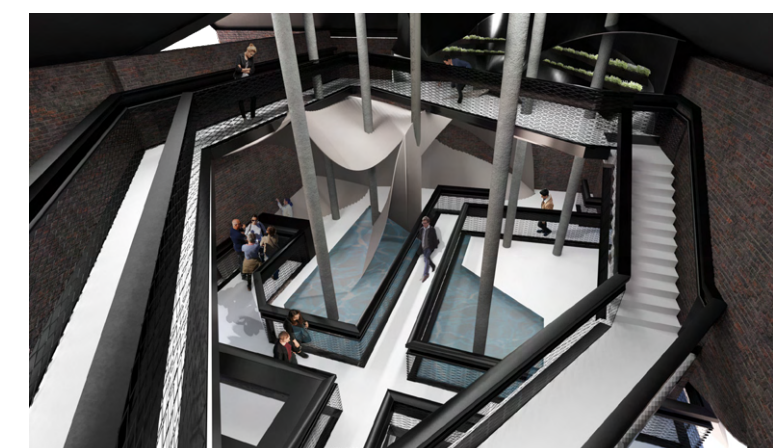
CONCEPT

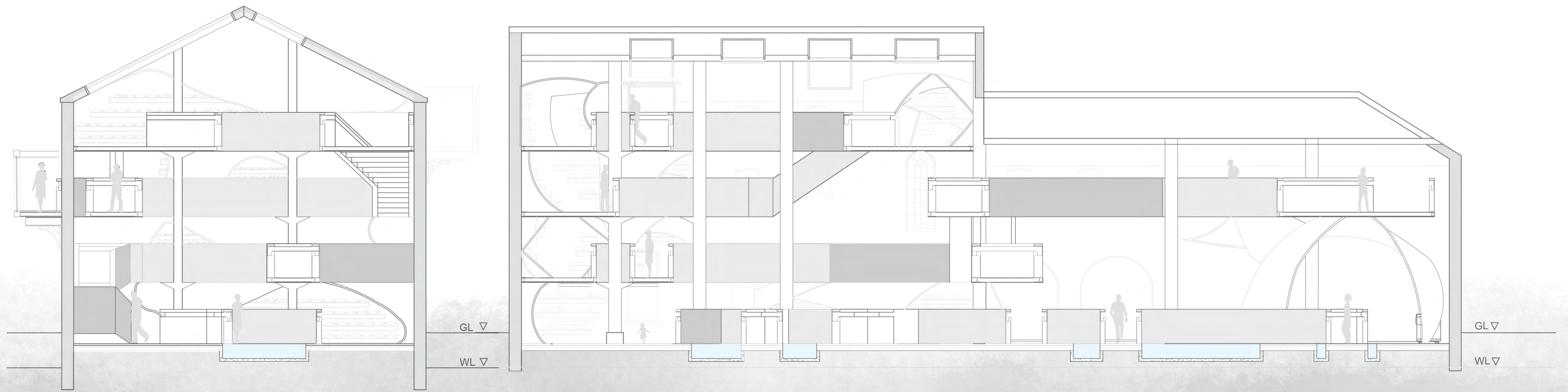
CONCEPT VISUALISATION



Individual's incomplete and blurred genome map projected onto frosted glass surrounding walkways. Informed what produce to collect from planters representing the double helix DNA structure. Genomic discovery journey begins - bridges act as pathways to peripheral destinations, spatially representing a genome map. User weaves in and out of the existing structure through considered extensions - blending the old and new by utilising pathways historically used for transporting goods in the building.

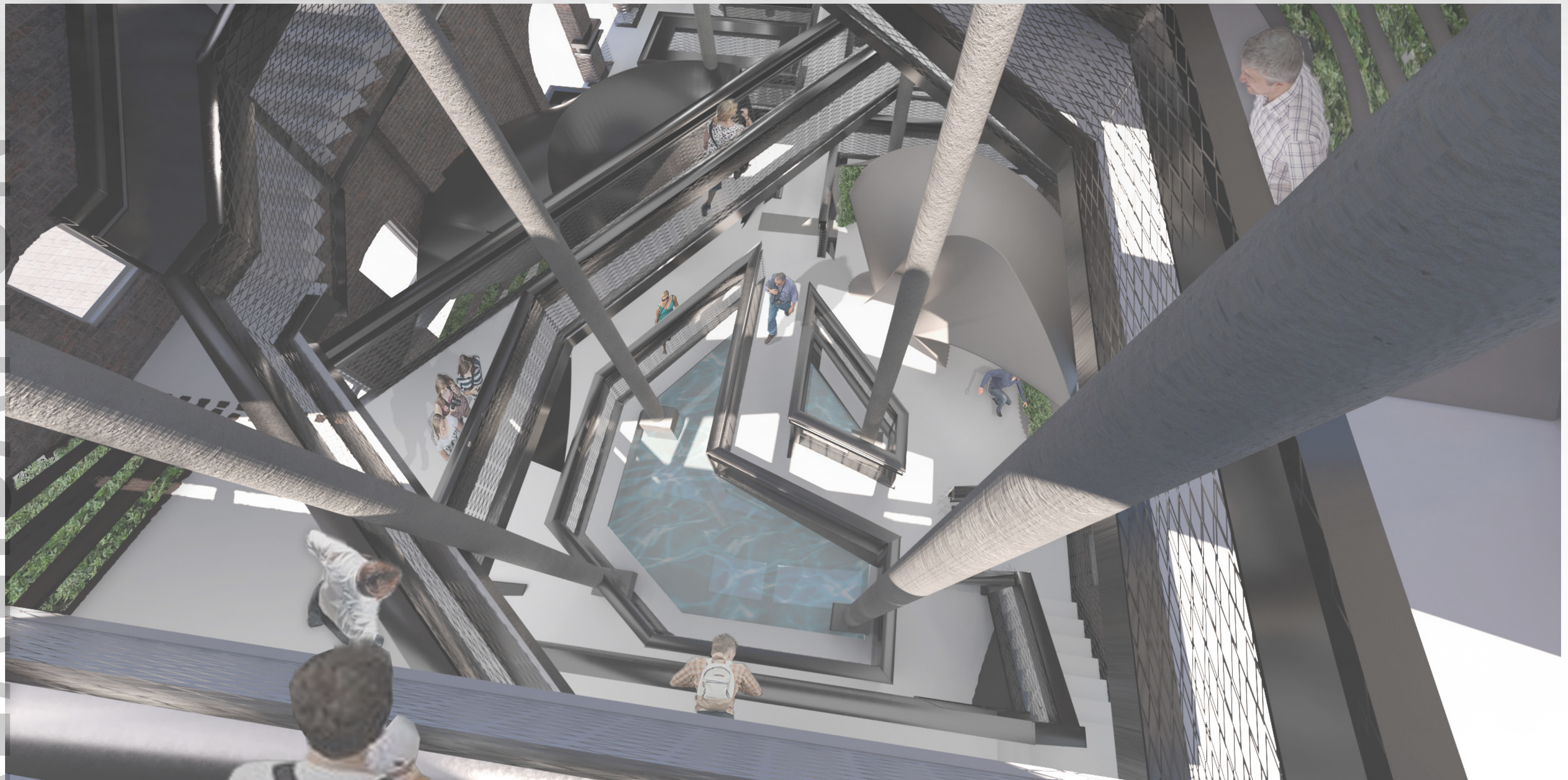
Personal genomic discovery is heightened as the user is physically heightened - transcending through the space, with the top floor allowing for literal reflection onto ground floor water where individual's genome map is projected, now clear and complete as genomic understanding has been enriched. Sales desk on second floor, allows for ease of purchase and then exit to the medicinal genomic health-care building.



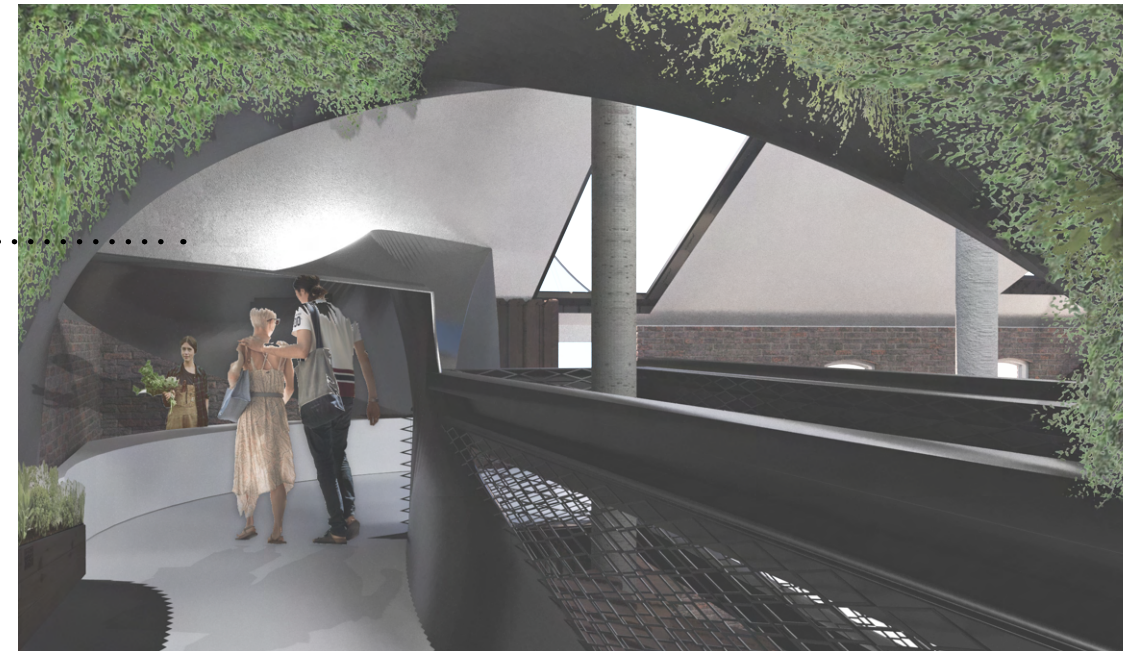
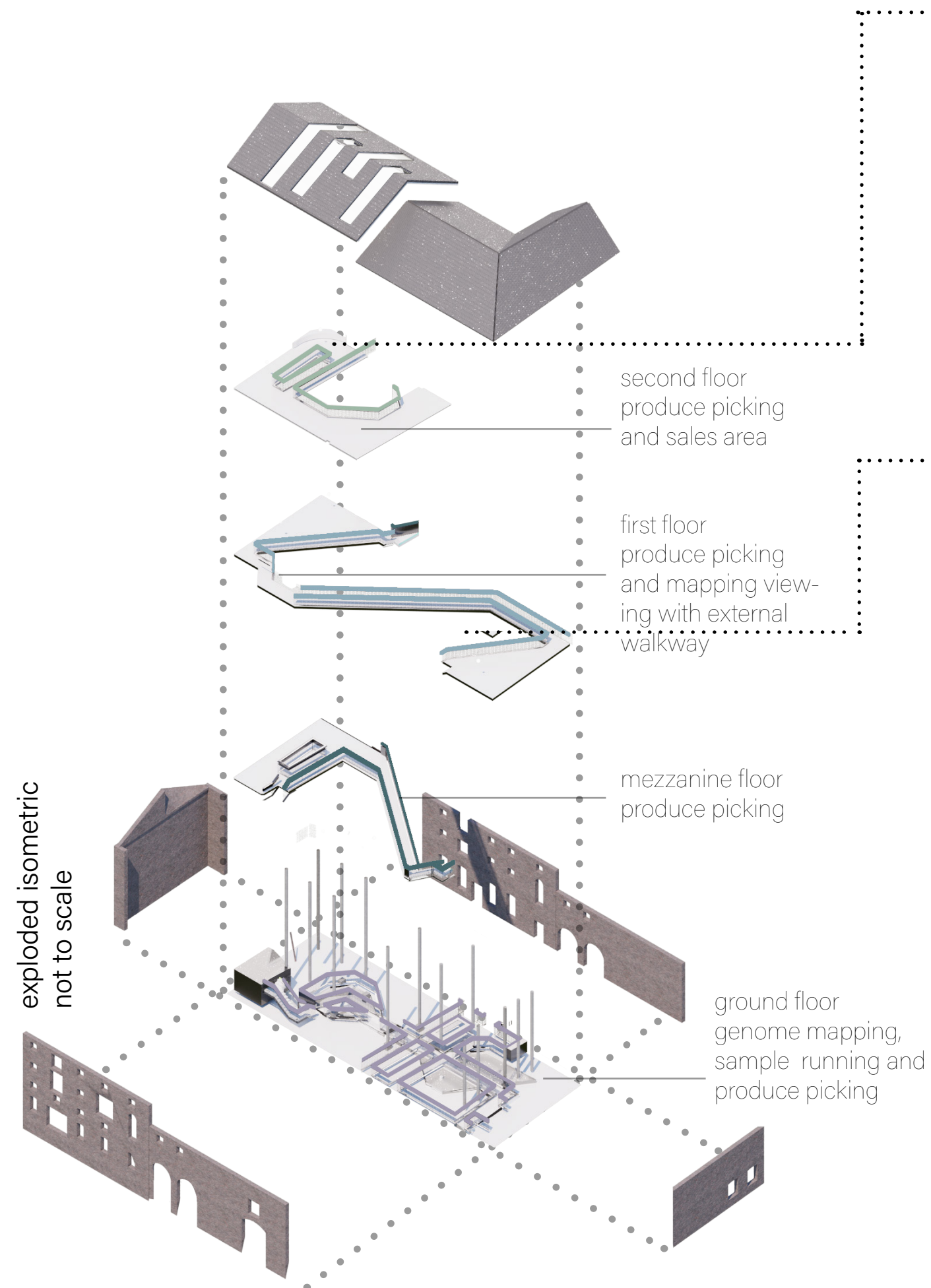


Quadruple height projection space allowing for literal reflection on genome mapping journey. Mesh balustrade breaks the divide between individuals in the space, reducing stigma associated with illnesses.

DESIGN
REALISATION



TECHNICAL RESOLUTION



The Genomill facilitates the future of healthcare, future proofing our NHS, improving quality of, and increasing expectancy of life.



Balustrade detailing and construction- containment of the core circulation of the space
Scale at 1:20

