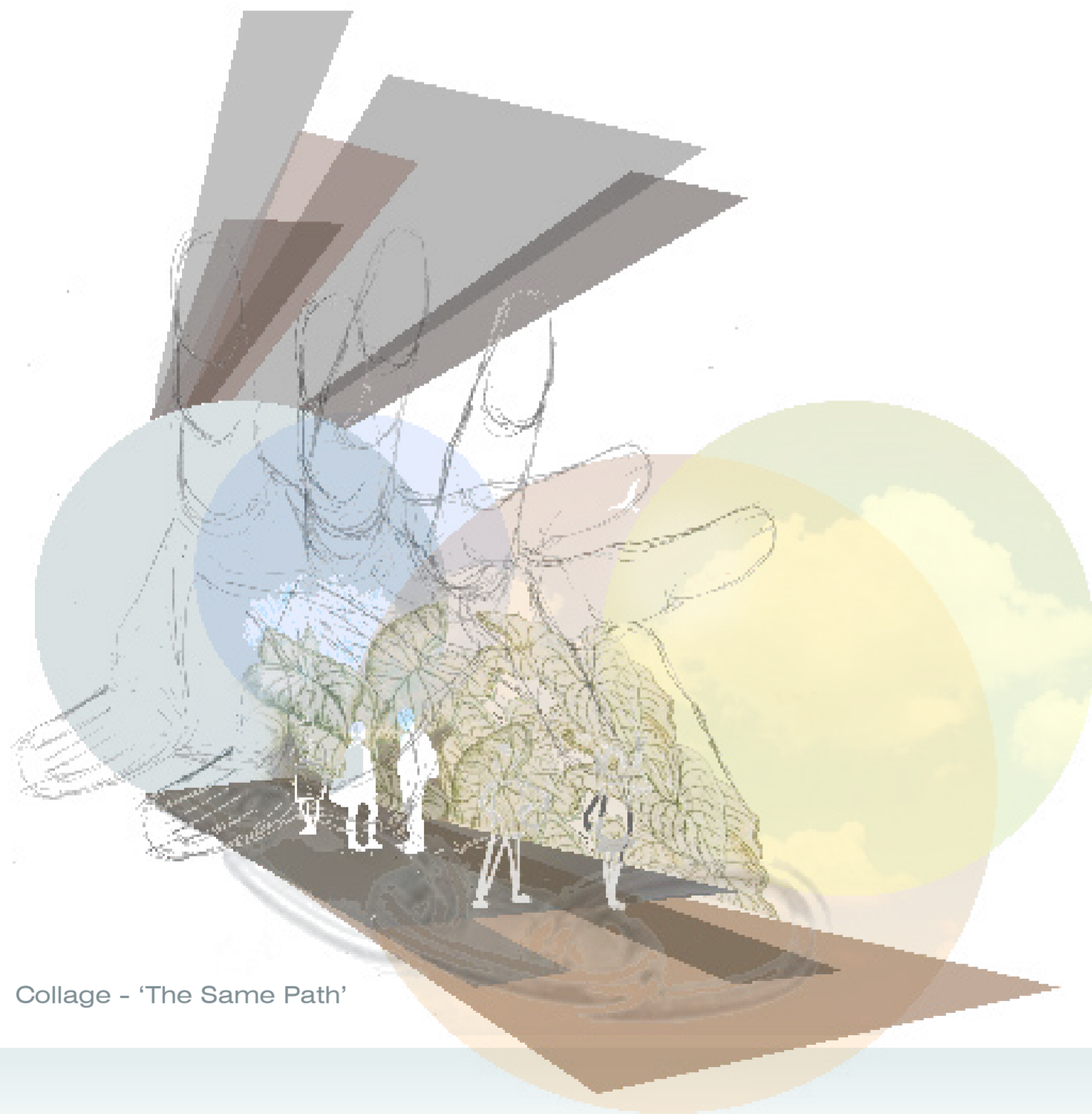


domus.

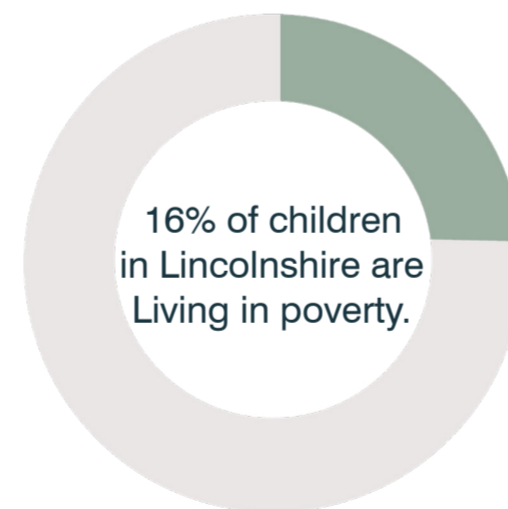
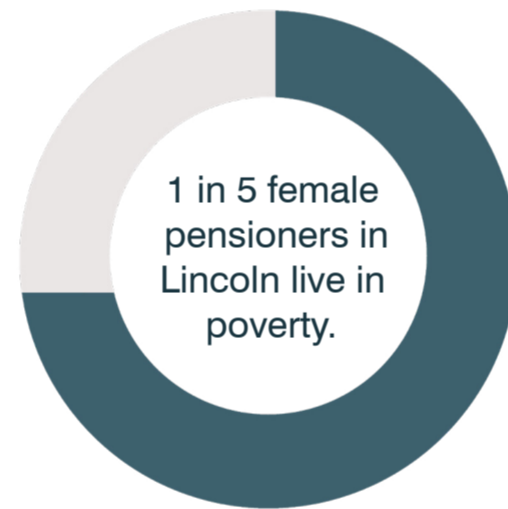
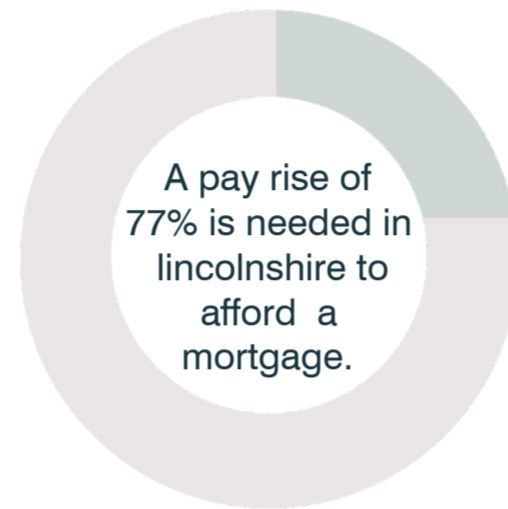
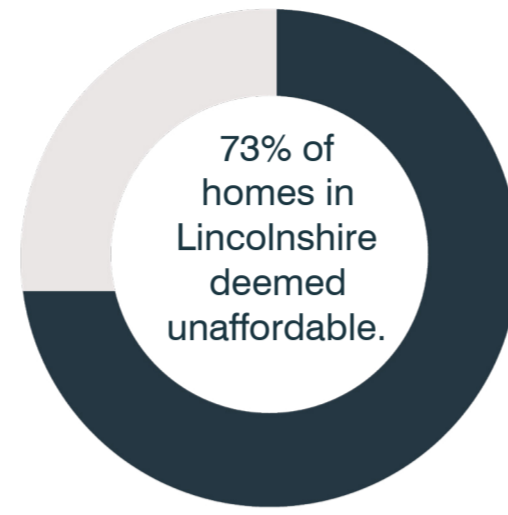
The Domus project is an extreme experimentation in housing typologies, converging three residential buildings into one.

The demise of highstreet shopping has caused multistorey car parks to become redundant, empty sites falling prey to the clutches of crime, wasting viable land and simply being an eyesore all while taking the most desirable, central, and convenient positions within towns and cities.

Domus offers a tight knit community, where neighbours can form deeper connections due to their cyclical reliance on one another. Physically, cohousing will provide an added layer of security which members, in particular the elderly will benefit from. The benefits gained from cohousing can be as small as day to day help or in times of potential crisis. For the wider society the system will reduce strain on emergency services, reduce demand for new housing, reducing urban sprawl and, due to the sustainably conscious nature of cohousing, will encourage positive environmental effects.



Collage - 'The Same Path'



- EDUCATION
- MEDICAL
- TRANSPORT

The Existing

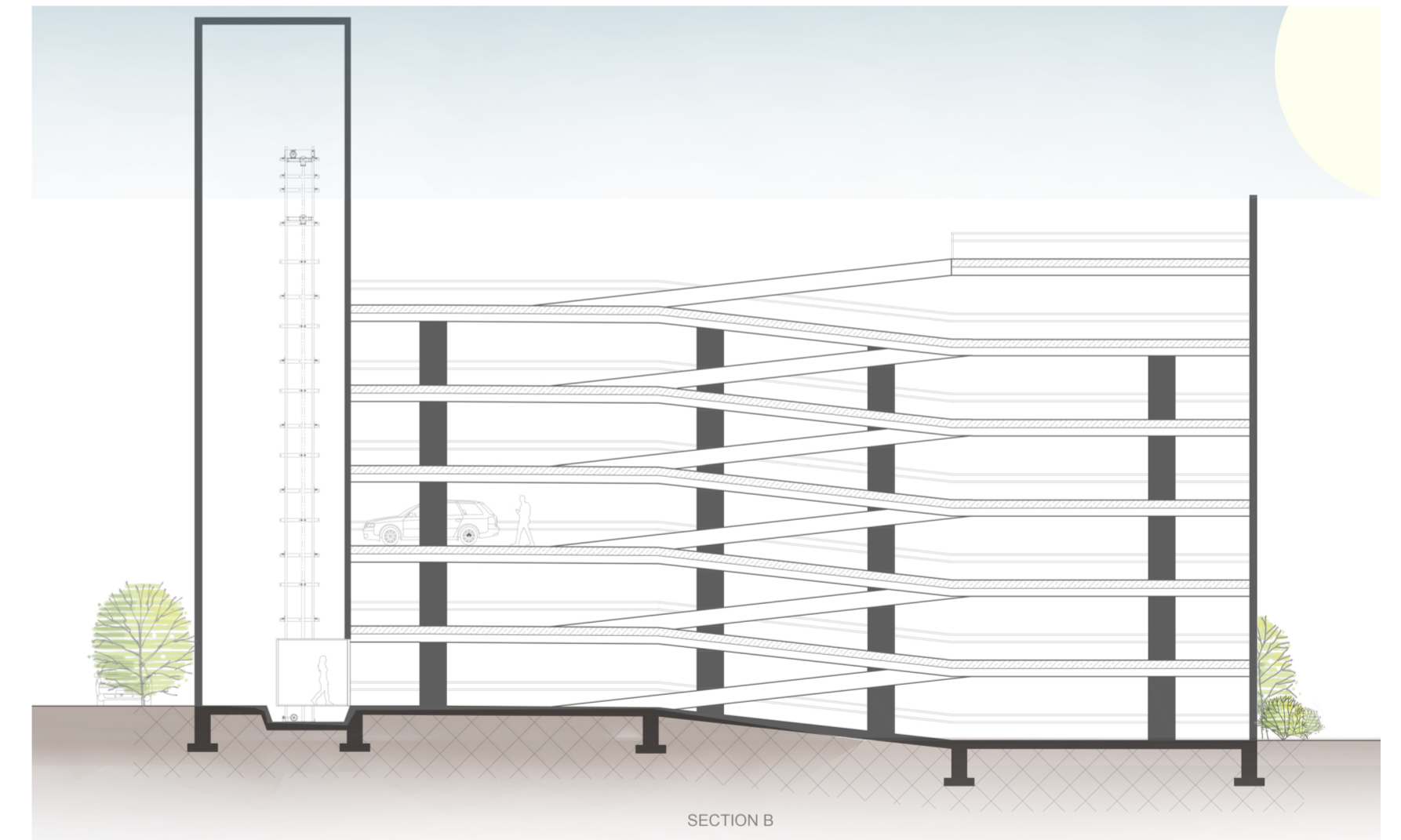
Broadgate Carpark was originally built upon a medieval pottery burial site.

When selecting a building to facilitate a residential intervention, to better the socio-economic wellbeing of its inhabitants, there were certain requirements that had to be met.

An adaptable and open layout, size to facilitate an optimum number of residents as well as its proximity to education, transport, medical facilities, and the city centre.



SITE PLAN
1:2500



1:200





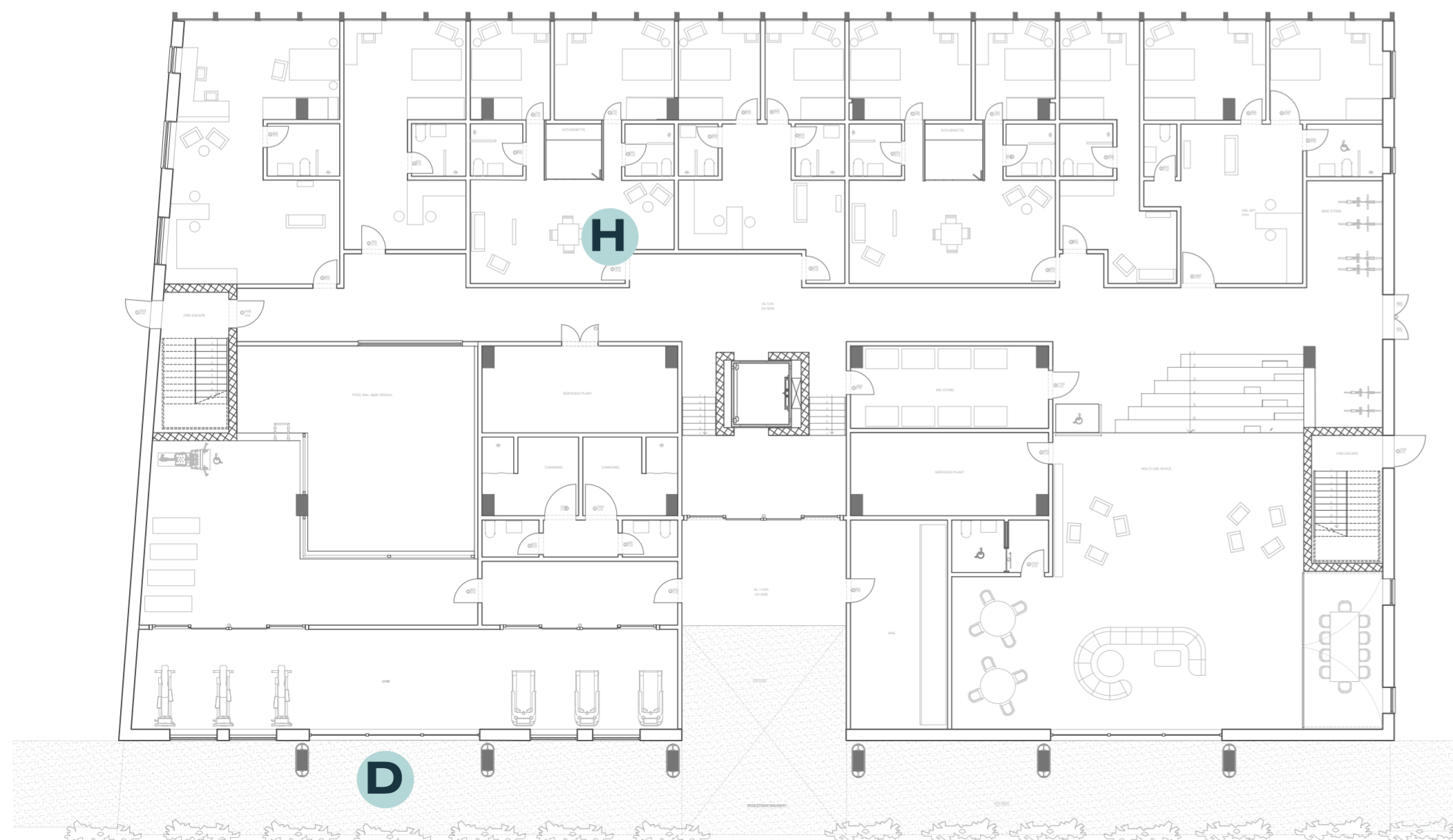
STUDENT



A new central entrance has been created on the east facade which provides access to the entire building.

The facade is set back to revealing structural columns, blurring the distinction between inside and out, the overhang protects from the elements whilst still feeling open and inviting. The now exposed columns have been clad in reclaimed timber slats, relaxing the harsh concrete creating a welcome approach.

Parallel to the columns espaliered acer trees create an avenue towards the entrance, softening the harsh façade of the neighbouring hotel beginning the transition from a public thoroughfare to a private front garden.



LEVEL 0-1 PLAN
1:200

CLUSTER TYPOLGY



SECTION A
1:200

The placement of the student apartments stems from the come and go nature of their lifestyle, and sometimes unsociable hours.

Preference towards later nights, so placed along the west façade, making the most of evening light.

Due to the variety of ages, and lifestyles of those within the demographic three apartment types make up the student typology. Single studio, double studio and two bedroom apartment.





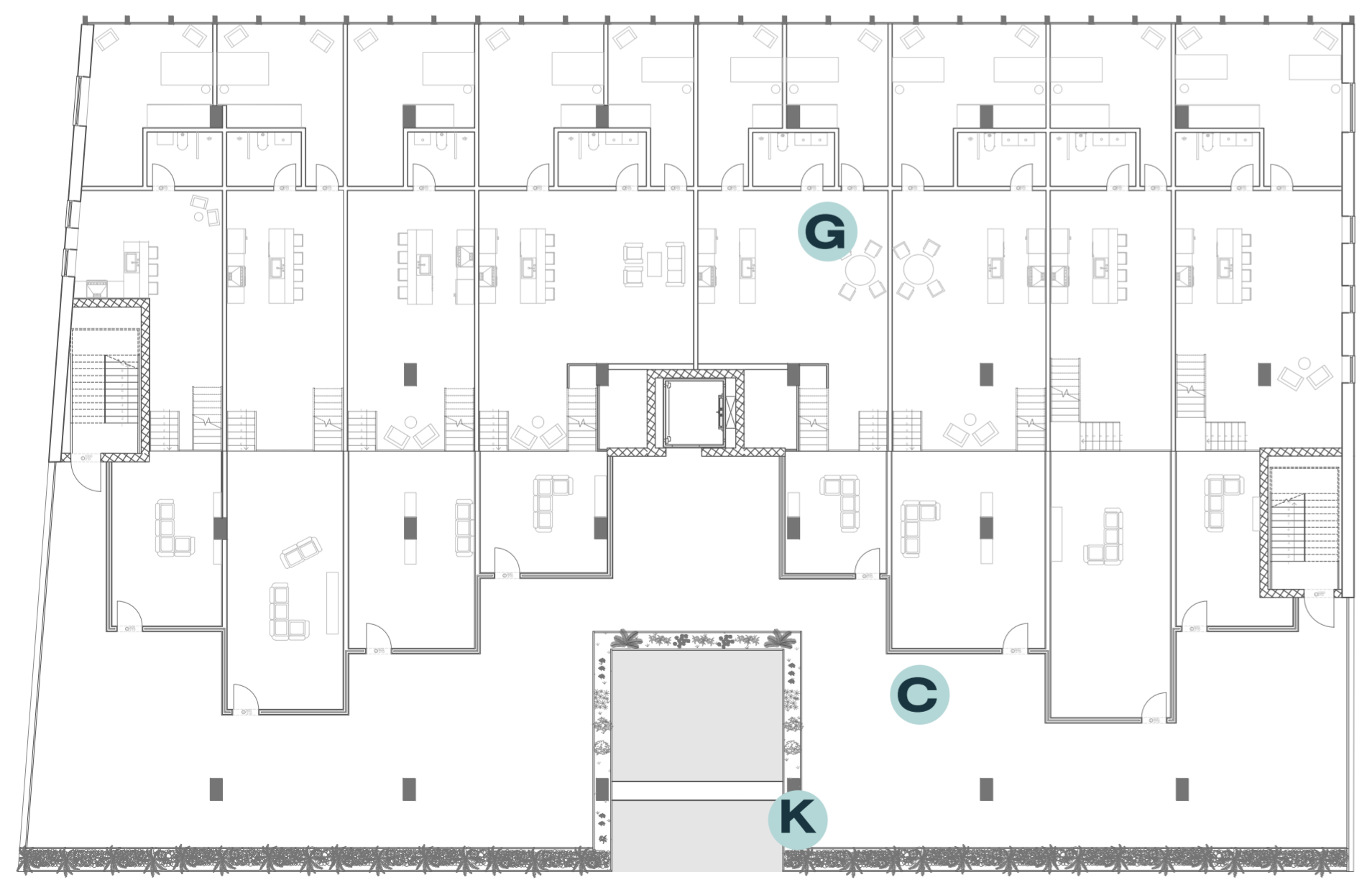
F
A
M
I
L
Y



Moving up through the central elevator which acts as the heart of the building you arrive at the terraced family typology. This layout was chosen due to its familiarity to the demographic within Lincolnshire cityscape.

Typically private front gardens now blend with the internal street which wraps the conservatories of the individual apartments. These internal streets and corridors act as the veins pumping life around the building.

From this level there are views down through the atrium to the approach and up to the floors above. This openness was key to enhance the feeling of togetherness, although residential areas are separate these glimpses provide constant connection.



LEVEL 2-3 PLAN
1:200

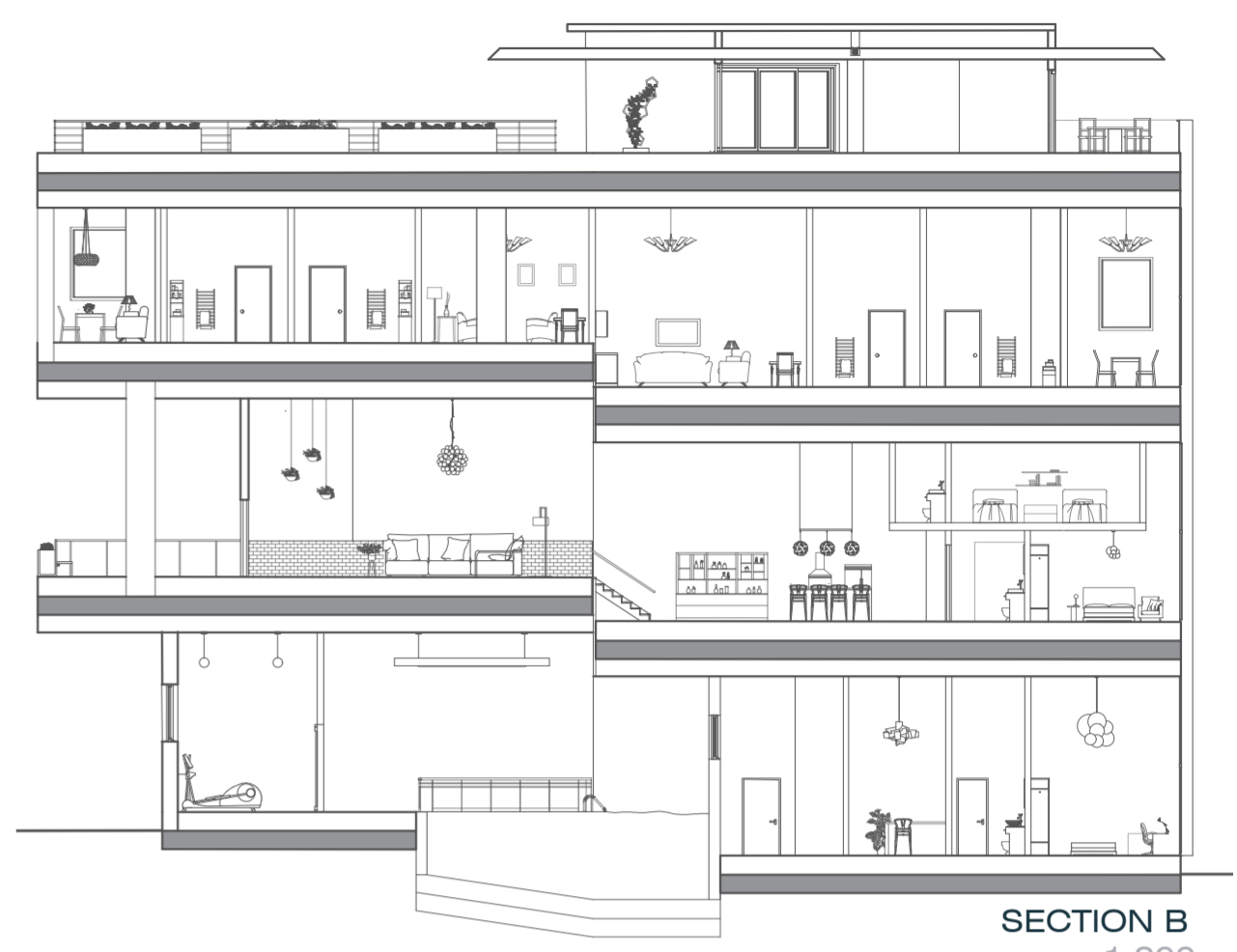
T
E
R
R
A
C
E
D
T
Y
P
O
L
O
G
Y



Family apartments vary from two to four bedrooms and are split between 3 levels due to the existing staggered format of the carpark and the addition of mezzanines.

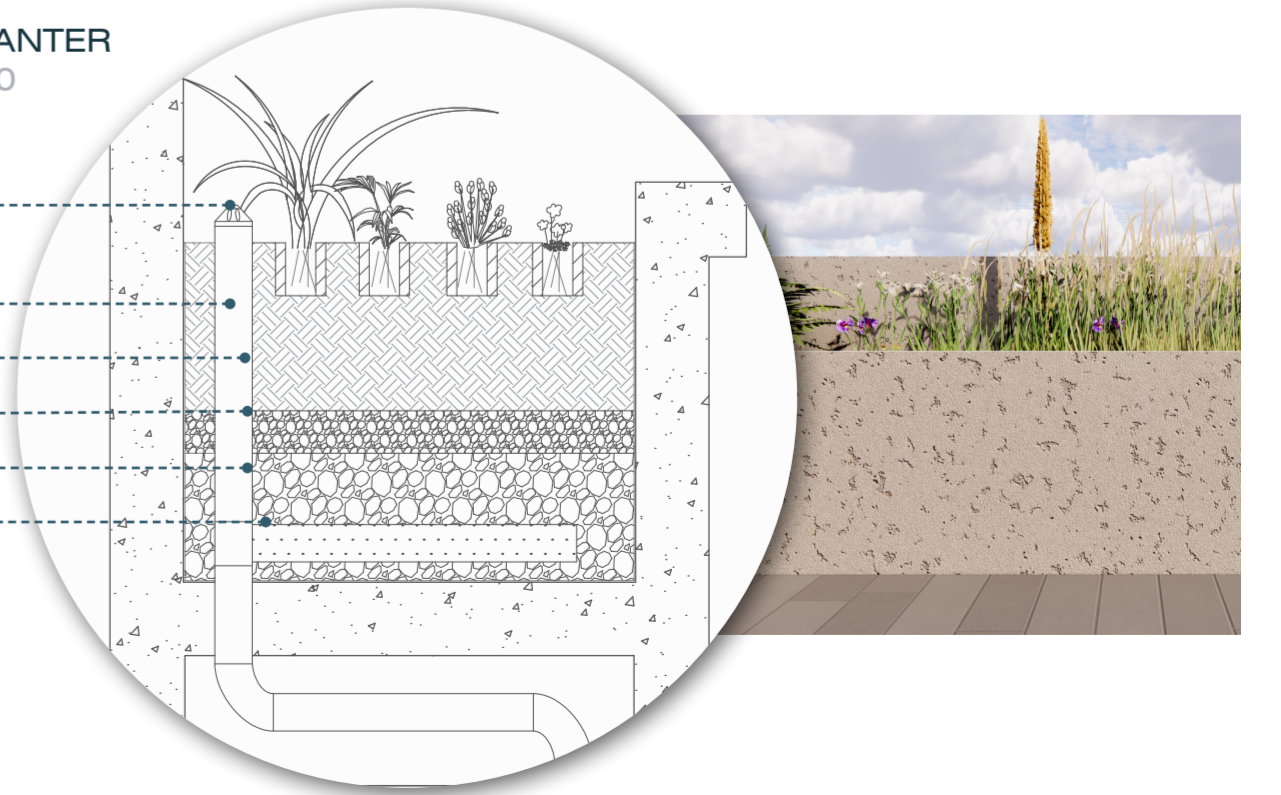
Within the building ceilings were kept high to denote a sense of grandeur and worth. To prevent these large space from feeling cavernous a suspended ceiling and Atlantis raised floor system were installed which also allowed for the installation of plumbing, electrics and the underfloor heating system.

Concrete planters were installed around the perimeter threshold to act as a balustrade as well as being a functional aspect of the sustainability of cohousing - the planting scheme throughout the building will help to regulate humidity, increase oxygenation, encourage wildlife, utilised for food.



- Irrigation outlet
- Planting mix
- Precast concrete waterproof membrane
- Top Soil
- Fine washed gravel
- Reservoir washed course gravel
- Recycled pvc pipe with drainage

PLANTER
1:10





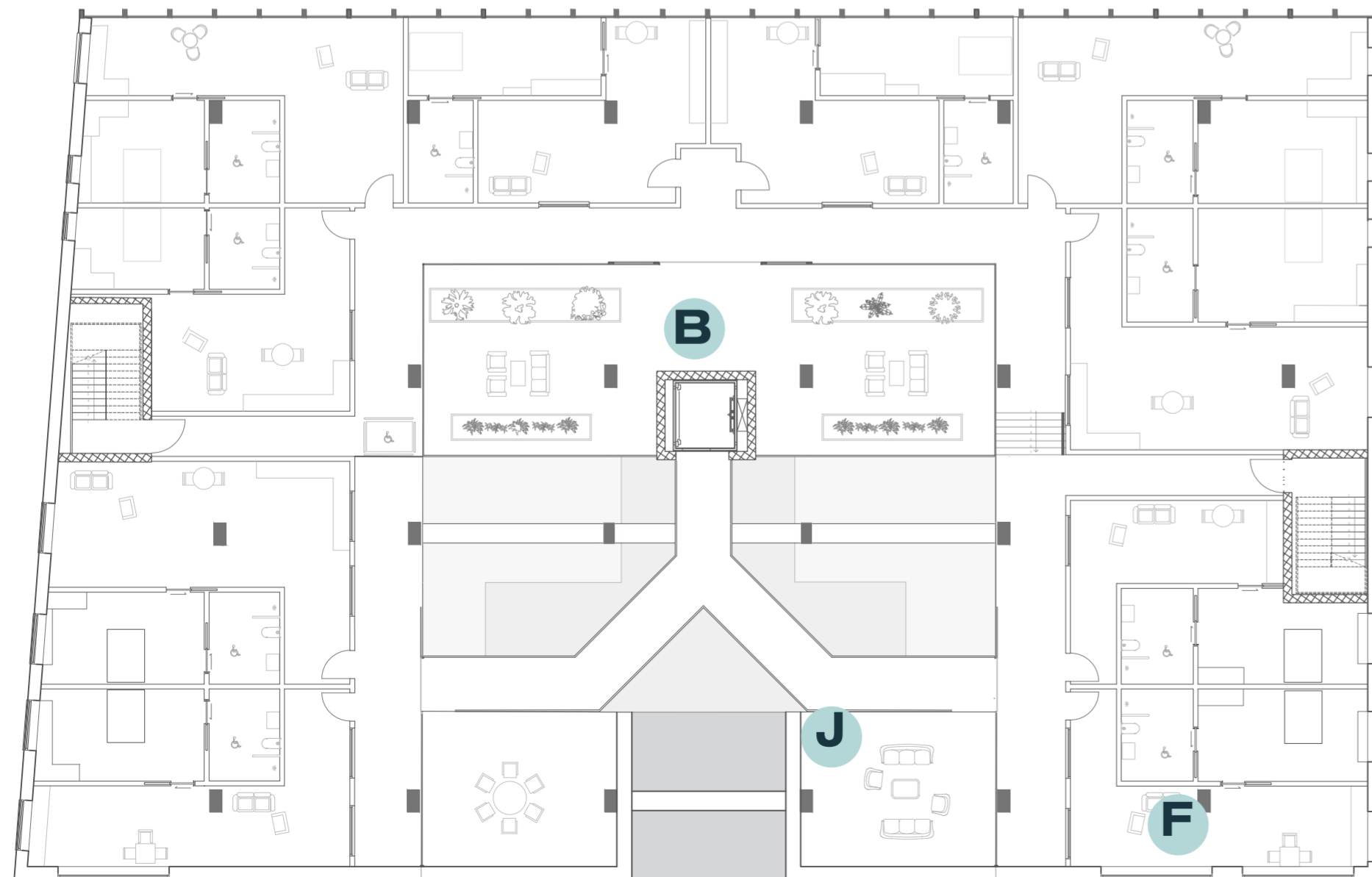
E
L
D
E
R
L
Y



Inside the elderly apartments there is open plan living/dining/kitchen spaces. This was thoughtfully designed to allow easy movement for those less able. Other considerations such as low cupboards, sliding doors and the floor finish were also implemented.

Walking frames, wheelchairs and walking sticks are more common amongst this age group. The floor finish is a travertine tile chosen for its natural finish but also its ability to wear beautifully. Rugs have been used in the seating area to provide warmth.

In every private space there are no internal corridors, rooms are all connected, inspired by the villas of Palladio where a house was homogenous.



LEVEL 4-5 PLAN
1:200

C
O
U
R
T
Y
A
R
D

T
Y
P
O
L
O
G
Y

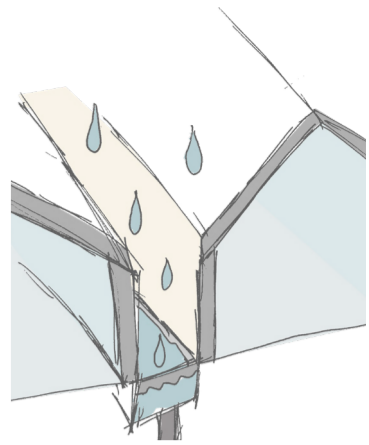


Arriving at the Elderly floor, residents have the option of exiting the lift into a curtainwall semi enclosed courtyard or to a bridge supported by the existing bearing structure.

The courtyard houses an indoor orchard, to combat the issue of sunlight solar powered grow lights have been installed.

The courtyard was designed to create the aspect of surveillance which from research greatly benefits the mental wellbeing of elderly residents.

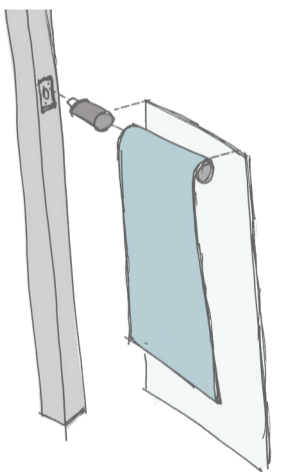
The trees were selected by pollination group, light/water requirements, size, blossom and the time of fruit to ensure crop most of the year.



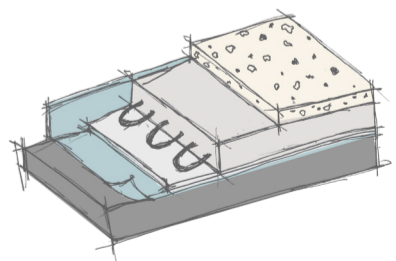
Stormwater catchment basin with Wetcore and Living machine system.



Seamless poured concrete seating and planting.

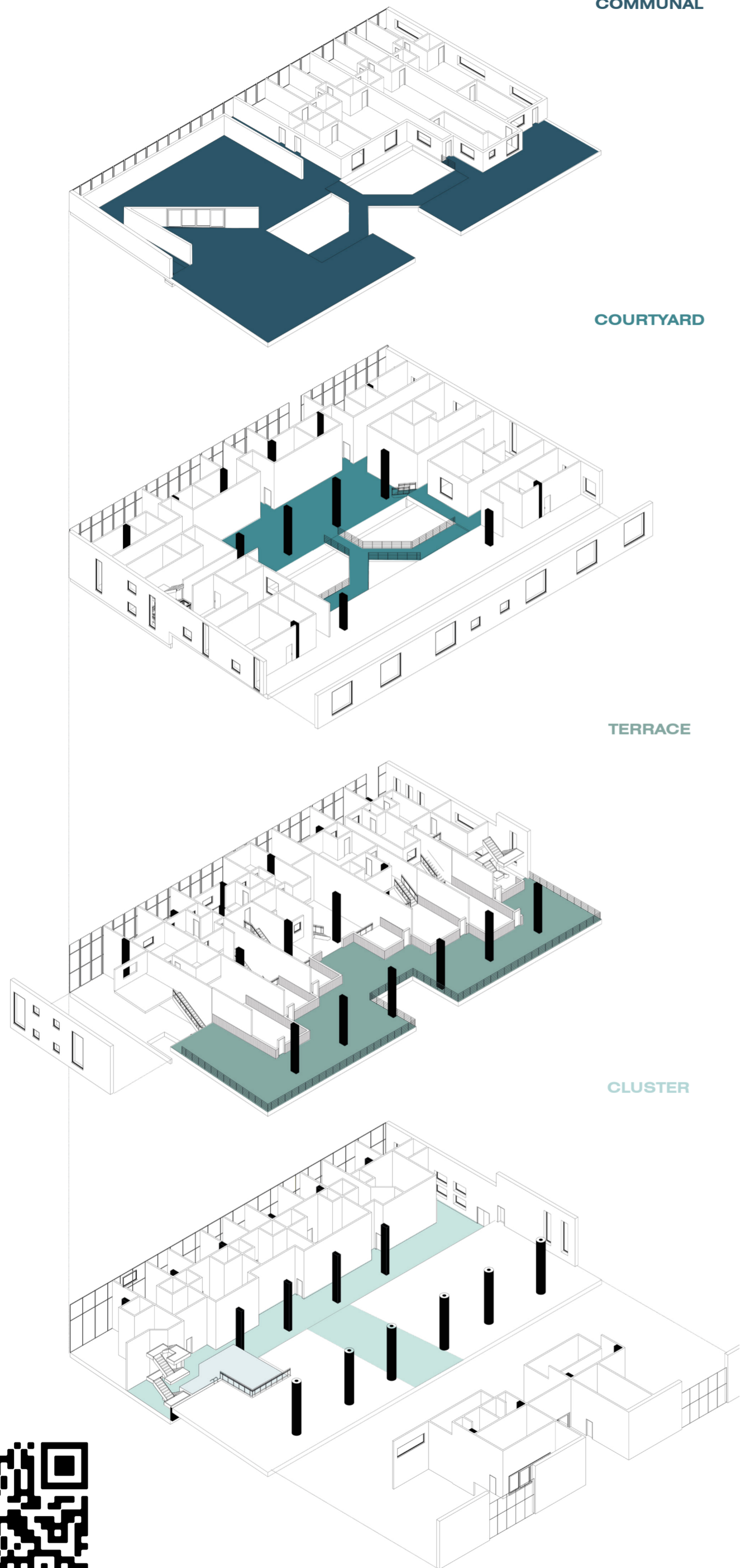


External roller shutter system. Remote controlled perforated aluminium shutters. (Ervirolinds)



Solar Powered Underfloor Heating
Construction:
Terrazzo
Concrete
Heating Pipes
Insulation
DPC
Reinforced Concrete Subfloor

C
O
M
M
U
N
A
L



COMMUNAL

COURTYARD

TERRACE

CLUSTER



Finally, the top floor. Again, there are two circulatory options, the perforated steel bridge, or direct indoor access.

Perforated steel provides strength and durability required for large bridge spans. The perforation provides an integrated anti slip function. Stainless steel also has a long life span, and again is easily recyclable. In any given stainless-steel object, 60 per cent of the mass comprises recycled materials.



There is access to a west balcony to give use of evening sun. The balustrade is formed by the insertion of glass panels between the existing concrete slats.

The outdoor space to the east houses leisure, crop growth and playareas for children. From this space views to the cathedral are accessible. Across the foot bridge there are surplus apartments reserved for displaced families who may need temporary accommodation or those who wish to trial the cohousing lifestyle. There are also two guest studios.

Throughout the building community was key, corridors are wide, there are pockets of seating throughout to provide places of congregation, and spaces are open.

The kitchen cabinetry here is comprised of recycled units of varying style, to emulate the notion of different things coming together as one.

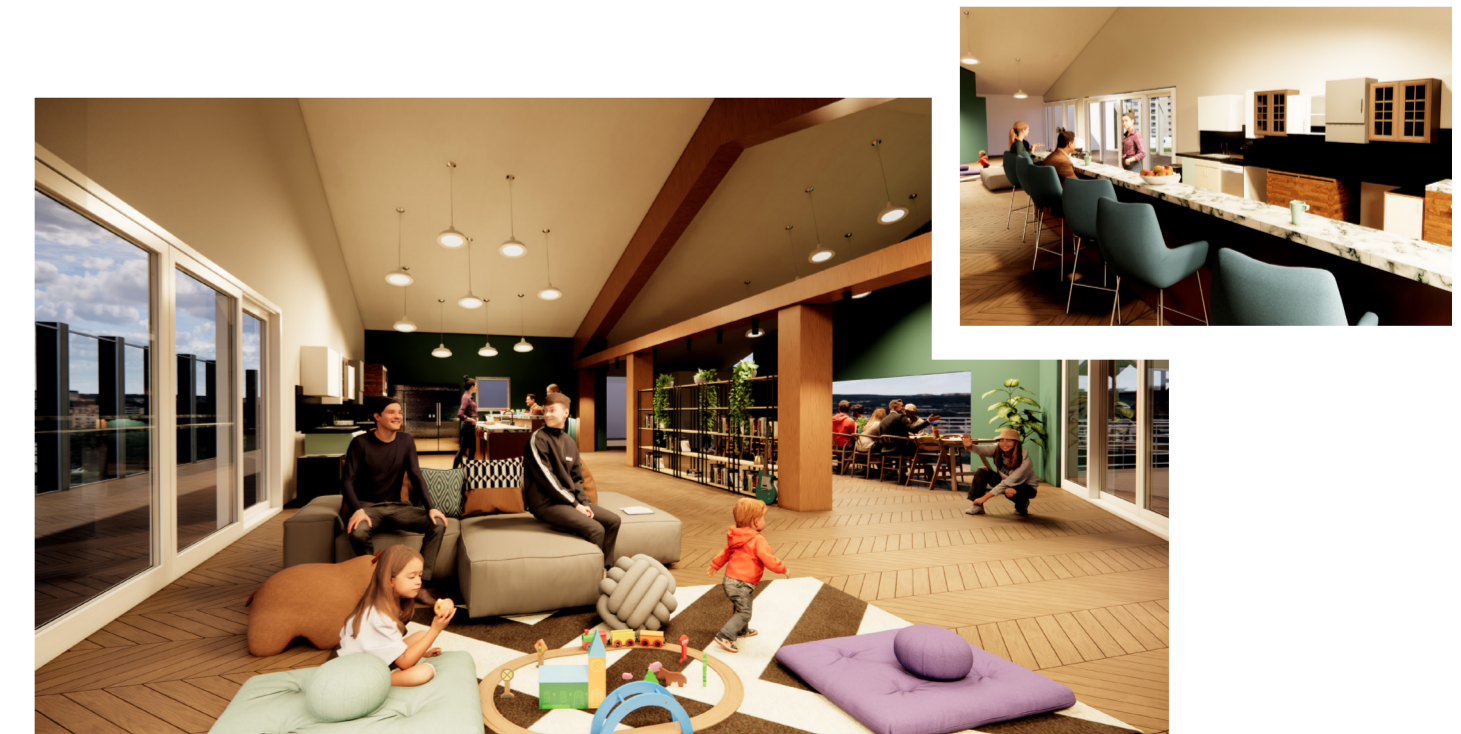
In conjunction with structural timber columns the reclaimed sleepers will provide a room division (non structural). The scale of sleepers will help to make the large room feel more well proportioned. The worn appearance of the material will help transform the newly adapted building to feel lived in and less clinical.

Blue accent walls are used throughout. Different shades of blue were used within the different demographic spreads to give some individuality to each user.

Blue was chosen as through colour psychology research it encourages relaxation and calm, and can be used to treat all types of pain.



Collage - Links in a chain.



Link to communal floor fly through