

meaning behind the name

*As musical sounds traverse the space, the echoes create a captivating musical ambiance. This transformation of the concept of echoes brings forth fresh perspectives and innovative approaches, leading to a renewed understanding and a captivating musical journey.*

# echo / redefined

Where Classical Music Finds Its Timeless Voice



*Introducing a music-specific design with two primary goals: educating individuals about music craft/making/manufacturing and inspiring them to actively engage in its practise. the notion is inspired by a lack of innovation in the future. As educational insitutions focus on academic core subjects, there is a concern that music and the arts may be overshadowed, leading to a lack of creative outlets for individuals.*

*this library seeks to address this concern by providing a space where people of all ages and background can immerse themselves in the world of musical craft. The libray serves as an inclusive hub, fostering an enviroment where anybody can learn to play an instrument, practice their skills, and eduacte themselves about various aspects of making music.*

*this particular music-craft library is dedicated to presenting music in a more approachable and engaging way. breaking down barriers and the complexities often associated with learning music.*

*In this environment, creative freedom takes centre stage. The library promotes an atmosphere that encourages exploration and experimentation, enabling individuals to discover their own unique musical voice. It offers opportunities for people to participate in workshops, share performances, open mic nights, and other community events, fostering a sense of collaboration, shared experiences, and artistic growth.*

*By combining music education, practice facilities, and a welcoming atmosphere, this library aims to reconnect with music appreciation and involvement. It aspires to foster a lifelong love and passion for music in individuals, offering an alternative and enriching educational experience that embraces the life-changing impact of making music.*



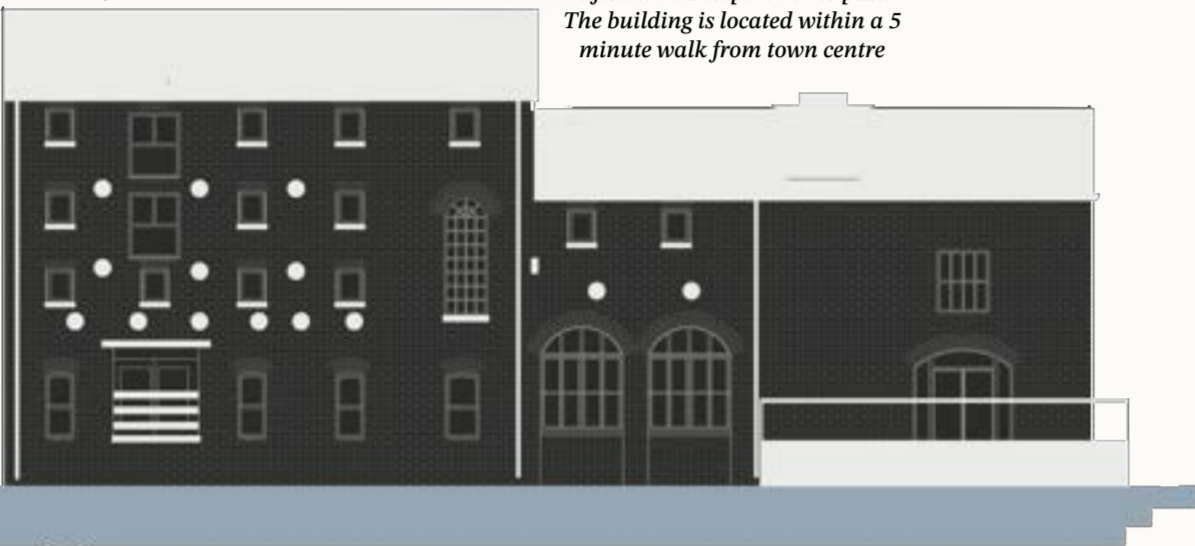
# School of Musical Craft Instruments

Within Newark is an educational institution that provides individual and group lessons for a variety of instruments, including: guitar, violin, piano and flute.

the academy also offers vocal training, theory classes and other opportunities to develop within music

The site of Newark Newark is a market town, it lies on the River Trent and used to be a significant inland port in the past. The building is located within a 5 minute walk from town centre

## Site Analysis



## Benefits of Music



### ENHANCES BRAIN FUNCTION

studies have shown that it can enhance cognitive abilities, such as attention, memory and problem



### STRESS REDUCTION

classical music has a soothing effect on the mind and body. it can help reduce stress, anxiety and even lower blood pressure



### IMPROVE QUALITY OF SLEEP

the calm relaxing nature can aid in better sleep, help unwind, relieve tension



### CULTURAL ENRICHMENT

classical music is apart of our culture, exploring classical music exposes you to the rich history of music, diverse styles, and legendary composers broodening your cultural understanding



### INCREASES FOCUS AND PRODUCTIVITY

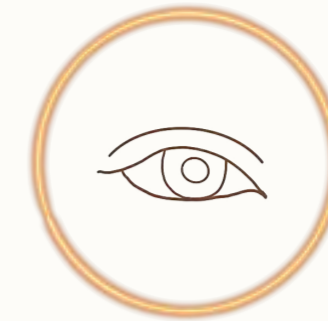
used as a background stimulus, it can minimise distractions and help focus



### MOOD ENHANCER

has the power to evoke emotions. Based on the range of notes played it can provide a range of different moods

# Senses within music



## SIGHT

Music can be visually captivating through live performances, music videos, or stage productions



## HEARING

Music is perceived through sound, with melodies, harmonies, rhythms, and lyrics transmitted through vibrations and frequencies.

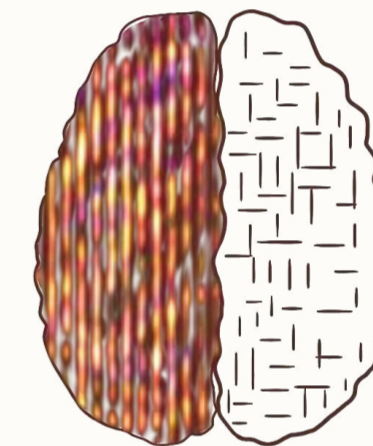


## TOUCH

Touch can be experienced while playing instruments, feeling vibrations, or dancing to the rhythm, enriching the sensory encounter.

## Creative output

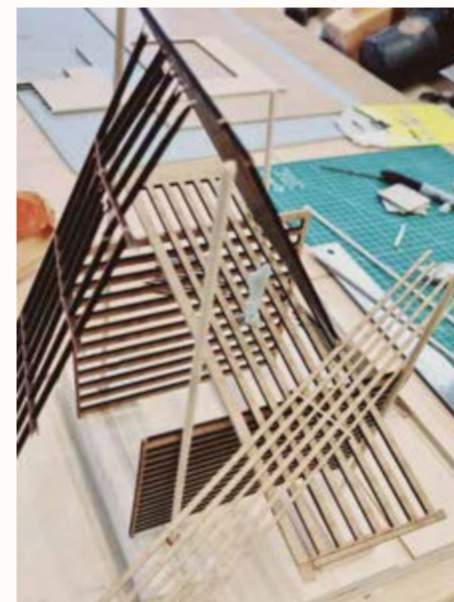
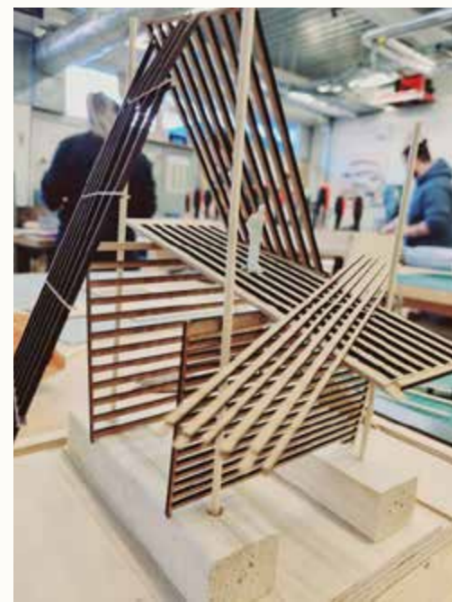
- creativity
- feelings
- visualisation
- imagination
- decision making
- multitasking
- arts & rhythm
- intuition



## Logical input

- logic skills
- daily activities
- language
- analytic & detail
- strategy
- facts
- words of songs

# Concept Model



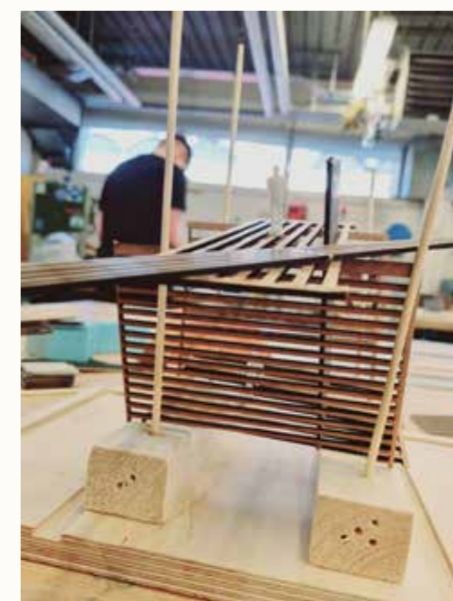
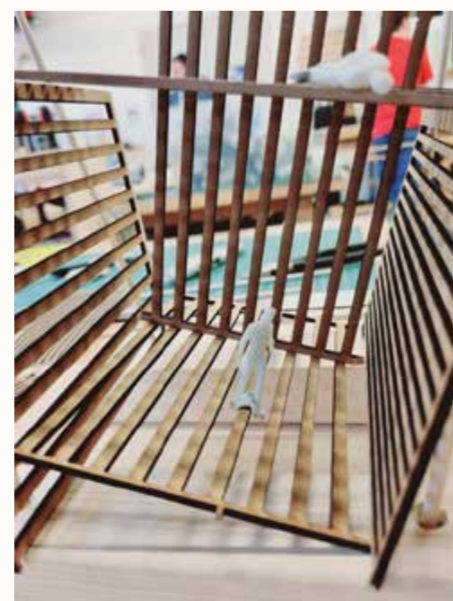
I believed that the best method to express my idea would be through physical models.

An abstract concept model served as the project's starting point. I sought to evoke a sense of discovery, travel, and intrigue. The model used musical strings to further the idea of movement.

strolling through this space, where shadows accompany your every step. It offers a balance of open areas, ensuring a sense of connection without feeling excessively detached.

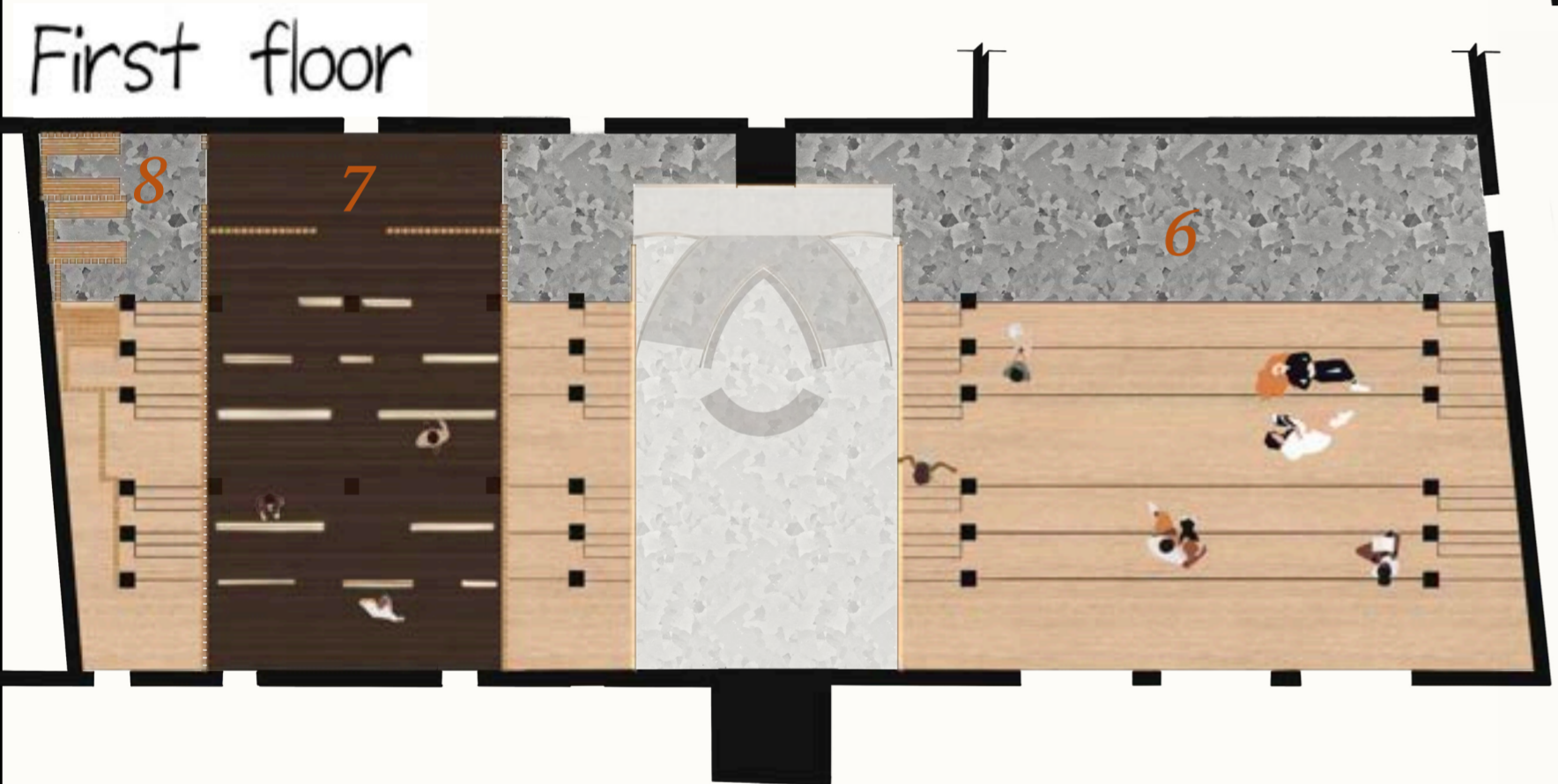
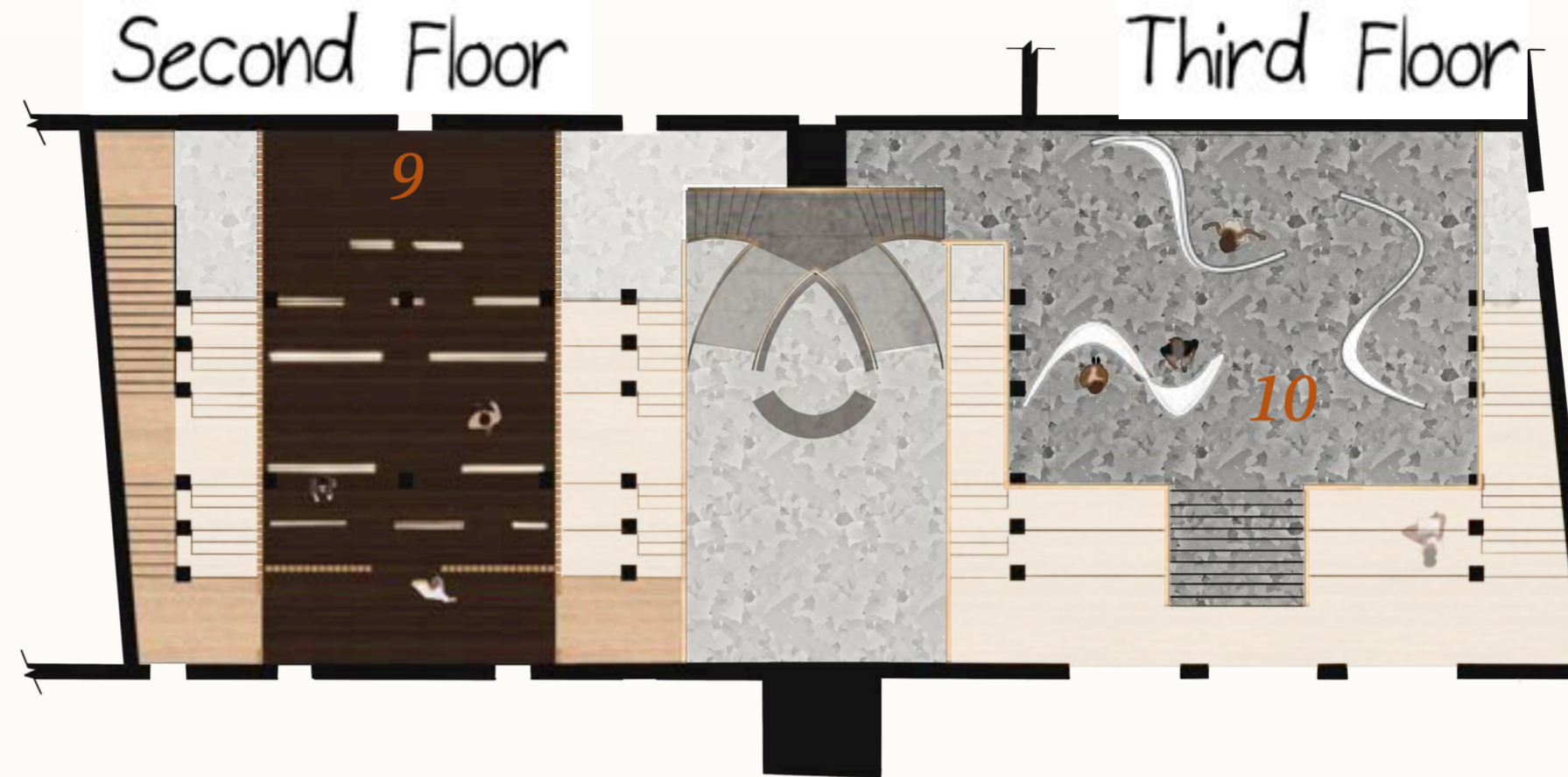
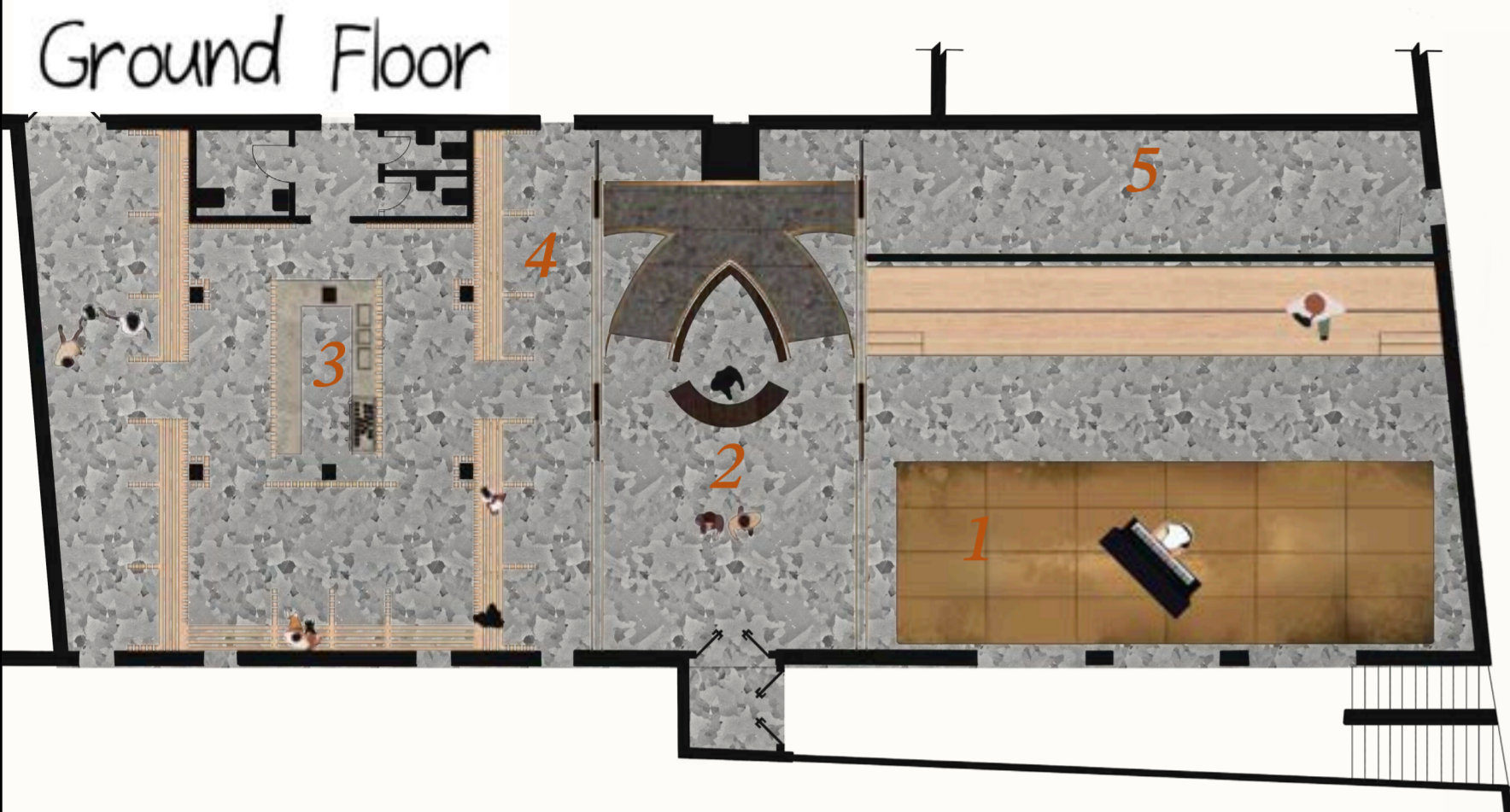
Moreover, the choice of birchwood as a primary material adds a cozy and organic touch, found in musical instruments.

Another notable aspect is the deliberate placement of voids within the structure. These voids serve the purpose of visually connecting different levels, providing glimpses into the adjoining spaces and facilitating a seamless flow throughout the entire design.





# Floor Plan And Key



**1 Symphonic Spce**  
multi level stage (grid by 1000x2000mm) finishing material rustic brass metal.

**2 Reception desk**

finishing material dark walnut wood

**3 Cafe**

**4 Seating area**

30x30mm birch timber wooden paneling

**5 Storage**

for musical instruments

**6 Read Retreat**

18mm birch plywood finishing material

**7 Melodic Muse**

stainless steel brass string 10-5mm, 100x100 birch timber paneling, aluminum recessed track for lighting. fsc certified wood and accoustic felt (10x4.5mm) creating a sound barrier and softens the room acoustics (dark walnut)

**8 Novel Nook**

100x100mm birch timber studs created for seating.

**9 Melodic Muse**

**10 Virtual Verse**

touchable digital educational glass

**11 Encore Emporium,**

sliding door, 30x30 birch paneling, double lamination and toughened glass for acoustic purposes. suspended aluminum LED linear lighting, black.

## Material Concept

The gentle oak, antique brass, alabaster, and ecru palette elegantly mirrors the harmonious tones found in traditional musical instruments. These carefully selected materials consume the space in a cozy and inviting ambiance

## Melodic Muse

Strings produce sound through the interplay of tension and vibration.

Plucking the strings transmits vibrations through the floor, resulting in different sounds on each floor.

Pitch is determined by string tension and thickness, while vibration generates sound waves.

Commonly used in guitars, violins, and pianos, strings offer diverse sonic possibilities.



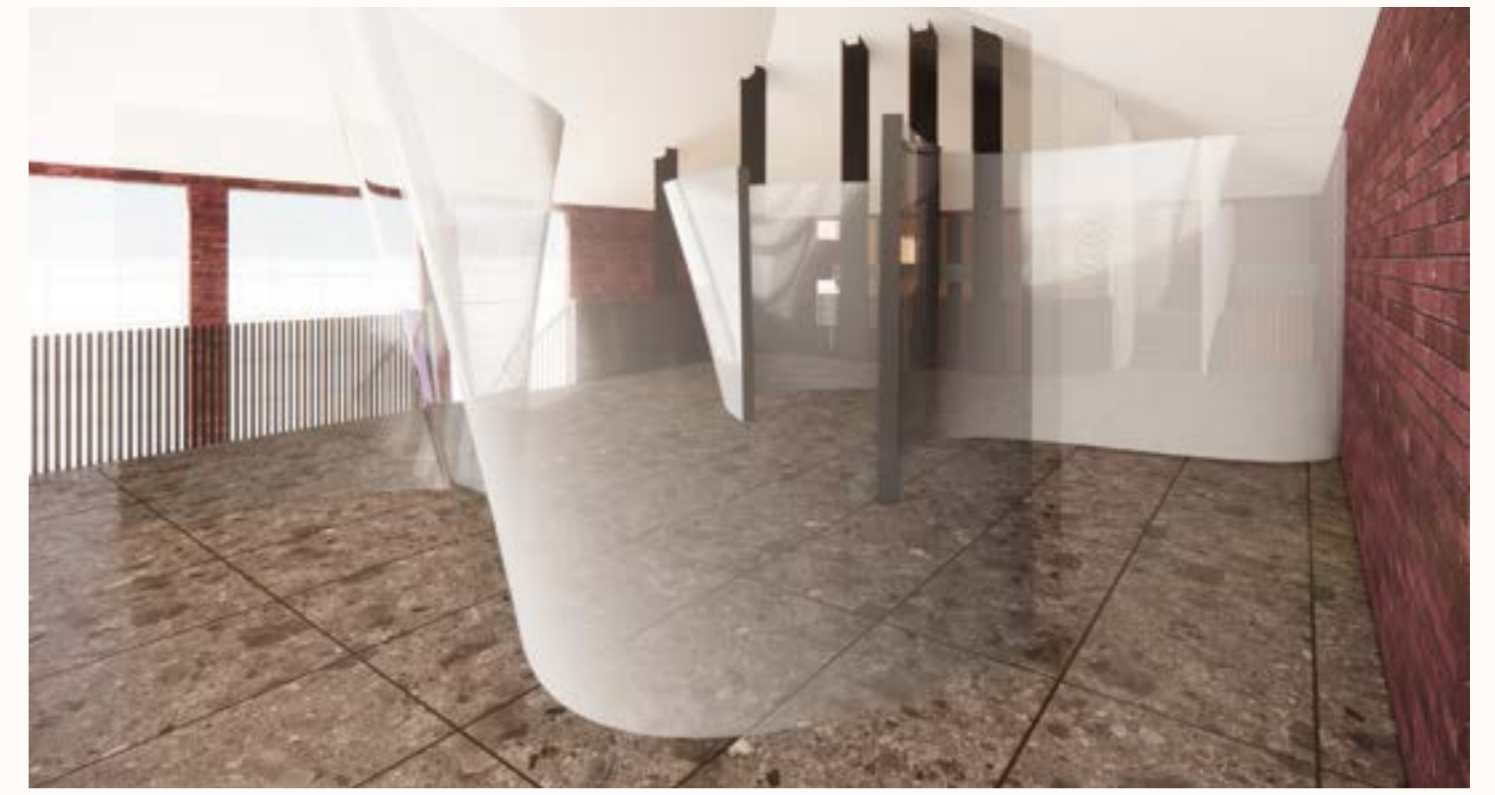
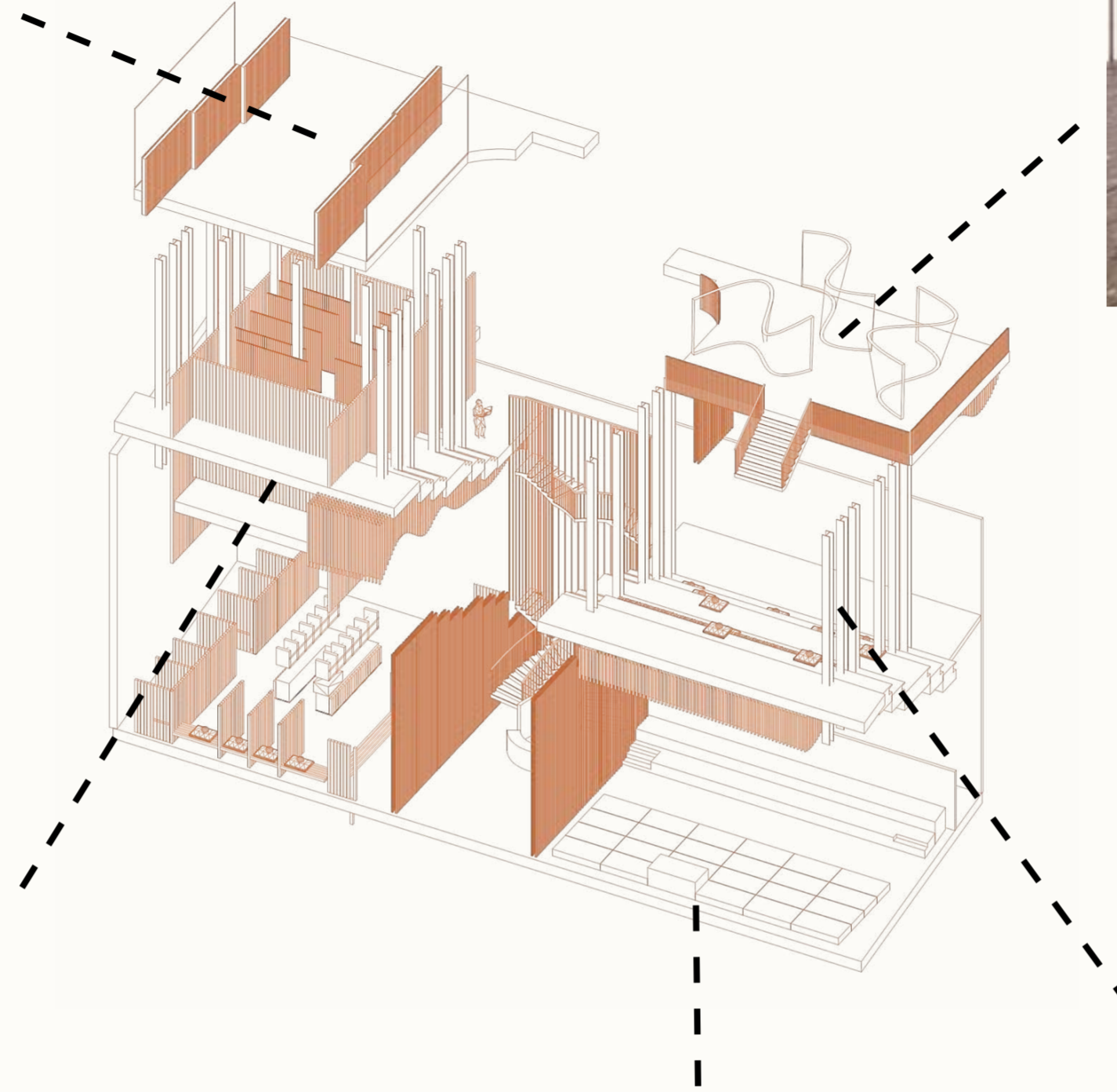




## Encore Emporium

*“Encore Emporium” is a space for performers to have an opportunity to showcase their talents. This place suggests uniqueness, and the opportunity to discover something special within oneself.*

# Visual Axonometry



## Virtual Verse

*“Virtual Verse” It is a place for exploring, creating, and experiencing music in a virtual setting. Musicians and enthusiasts gather here to share, collaborate, and appreciate music in its diverse forms. It embodies the intersection of technology and artistic expression, showcasing the fusion of traditional musical roots with the digital realm*



## Melodic Muse

*“Melodic Muse” combines the concepts of melody and inspiration. A place that fosters creativity, sparks ideas, using the power of melodic expression. the sequence of musical tones the user can create means to inspire and guide the artists with a unique experience*



## Symphonic Space

*“Symphonic Space” is an immersive space where music enthusiasts gather to appreciate, discuss and explore symphonic compositions, orchestration techniques, and related topics. By highlighting the power and beauty of the symphonic experience within a designated space the rich and elaborate compositions of symphonic music come to life.*



## Read Retreat

*“Read Retreat” is a dedicated space where reading takes center stage as a form of relaxation, escapism, or intellectual engagement.*



# Design Notes

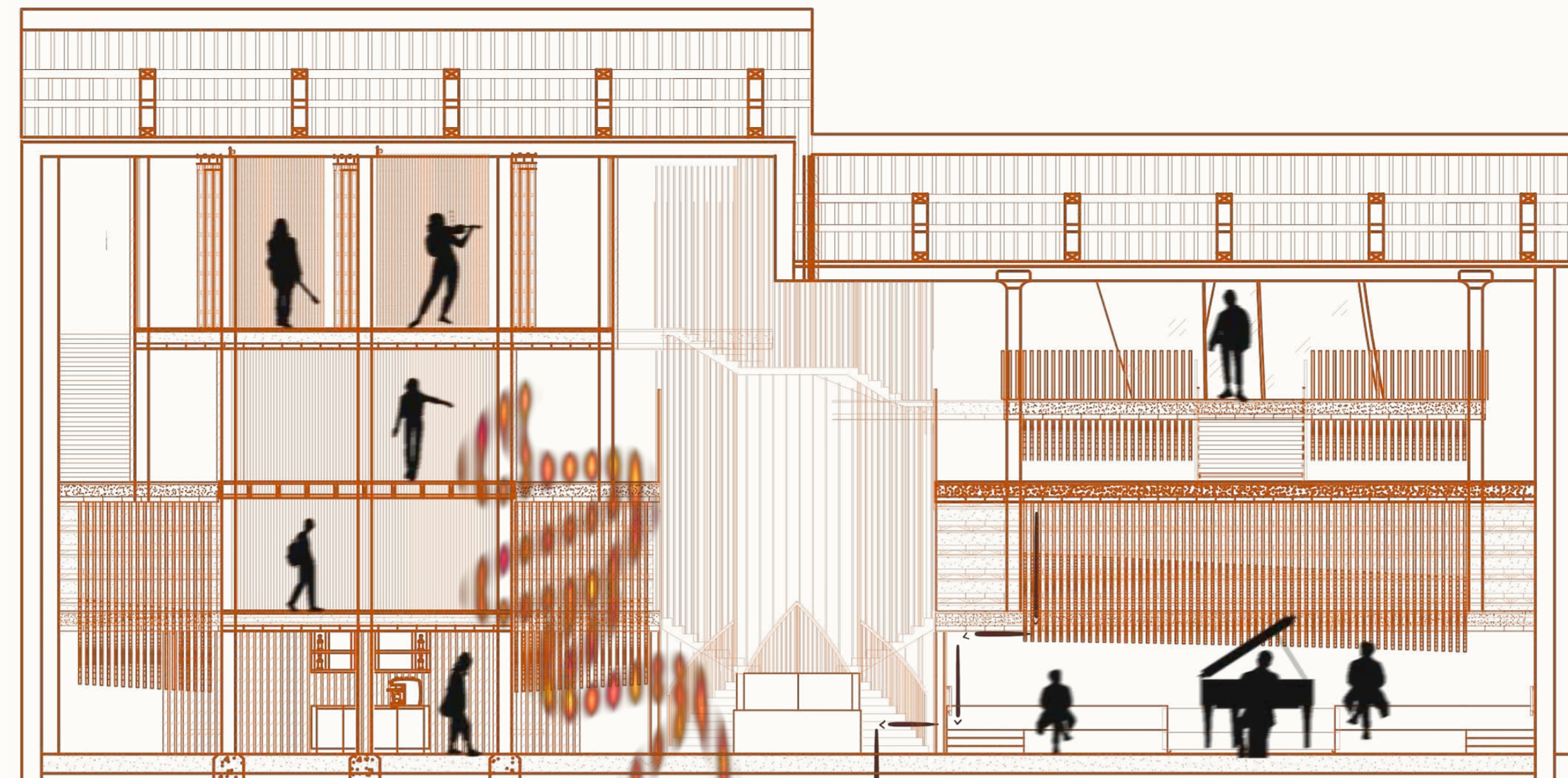


## Creative output

The layout encourages creativity and imaginative thinking, enhancing user experiences.

Melodic Muse - creative outlet to touch, hear and express sound in your own artistic making.

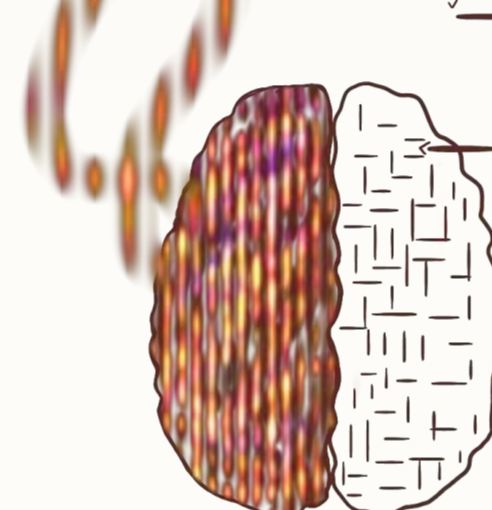
Encore Emporium - group or individual practise area to express yourself with actual instruments.



Because students have a variety of learning preferences, styles, and demands, it is crucial to design educational institutions with these factors in mind.

The educational institution provides inclusive and encouraging learning experiences that cater to individual talents and interests by incorporating a variety of learning methods into the design.

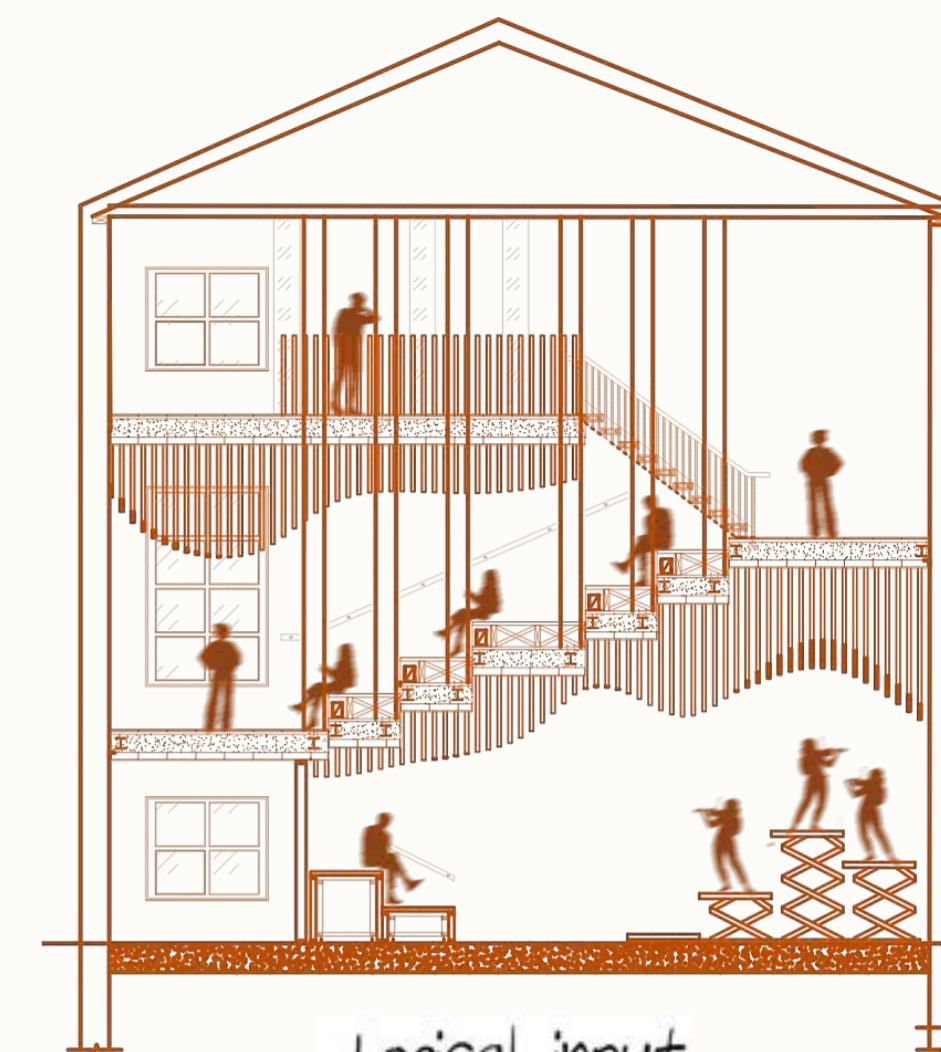
The learning process is made more interactive, stimulating, and meaningful by include hands-on activities, group projects, technological integration, and experiential learning opportunities.



The building serves as a vessel for immersive experiences.

material section; age well, be robust, honest carpentry, materials and textures that had a life and had like errors and misakes

what makes the design, its not this perfect polished thing which is intended to mirror what the users might believe in themselves



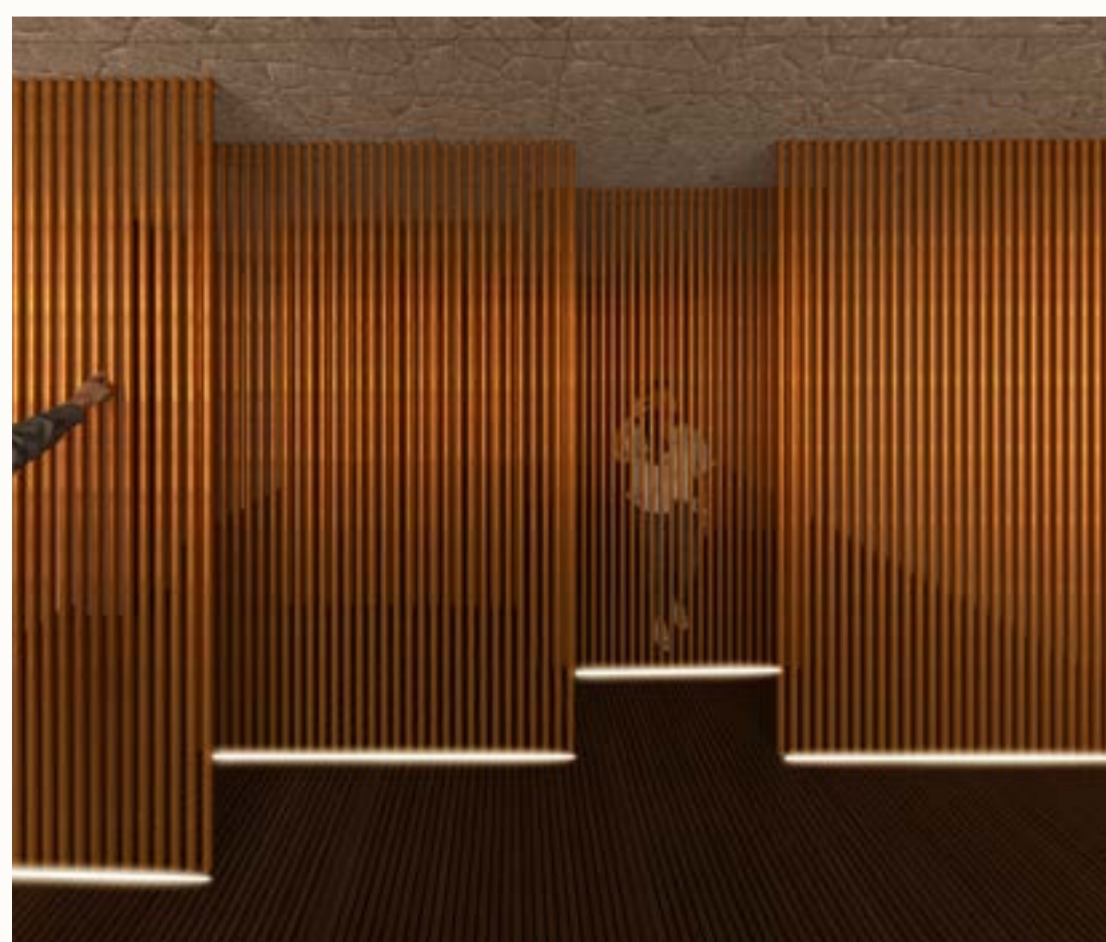
## Logical input

The design aims to present information in a rational and organized manner, facilitating understanding and critical thinking.

symphonic spcae - a function space that allows indivuals to observe, listen and see how performs actually play music

reading retreat - It also encourages critical thinking and analysis as readers interpret, evaluate, and make connections within the musical manufacturing.

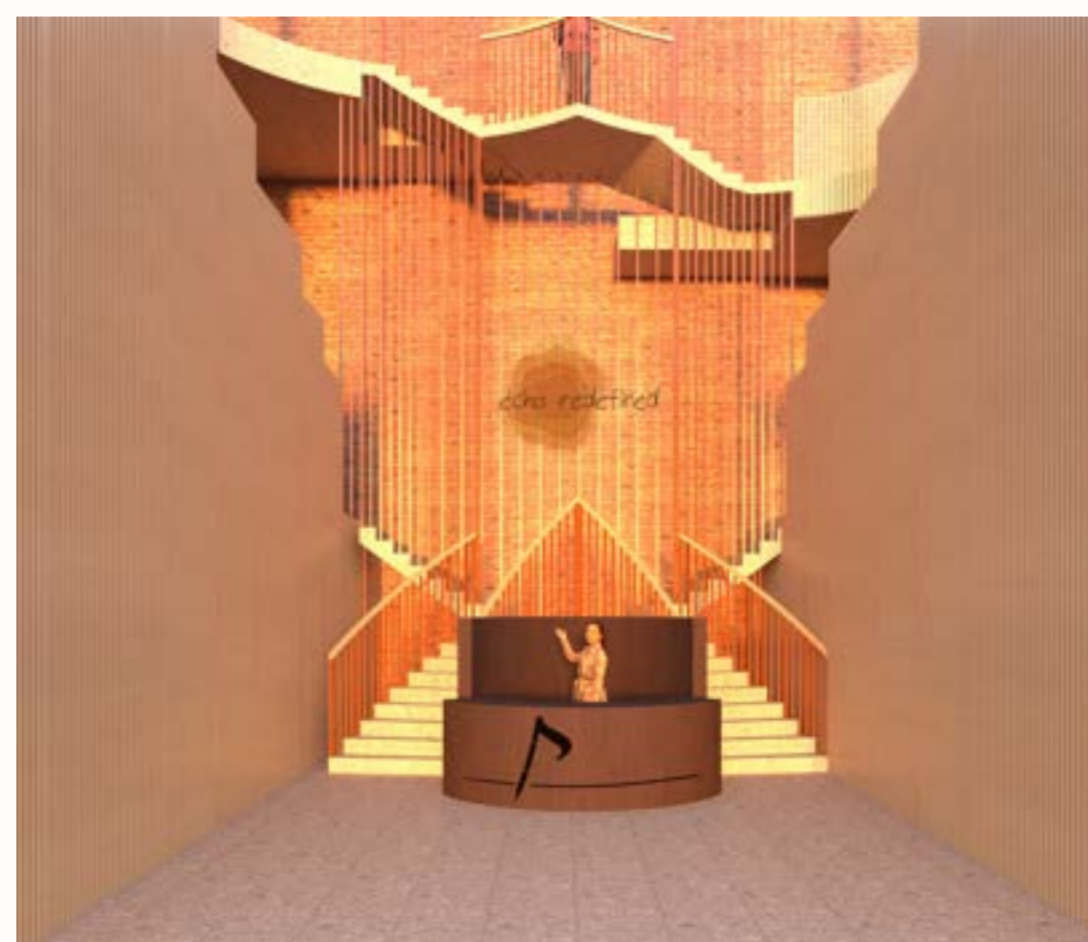
virtual verse - Digital education platforms can adapt content and pace to meet individual student needs.



in this space passages are much narrower, the aoustics are much softer and the shadows are more intense strings wrap around you, emersed within sounds

this creates a feeling of safety and privacy, to discover oneself musical notes.

a facade which does not reveal too much about whats going on behind it. the space engages with your imagination, doesnt tell you whats happening inside but you can hear it.



Upon entering, the space is cloaked in mystery through the incorporation of timber paneling. The vertical placement of the wooden paneling accentuates the space, mirroring the verticality of instrument strings, thereby evoking a sense of musicality.

creating the symbol to start your own journey through musical education.

The stairs lead you on a captivating path to unseen spaces. The entry way is narrow, this would then take you to a more open space. this did 2 things, led to mystery and also made the new space feel even more grand. from going to a in-closed space to a completly wide open space



These windows serve multiple purposes: they allow natural light to enter the space, creating a visually pleasing and well-lit environment for the musicians, while also establishing a connection between the interior and the external surroundings. The gridded pattern of the windows adds a sense of structure and organization to the design, providing a frame within which the musicians can perform. On stormy or rainy days, the sounds of the weather outside can blend with the music being played, creating a unique and immersive experience. The textures and surfaces within the room have been designed to enhance acoustics, providing a rich and resonant sound environment.