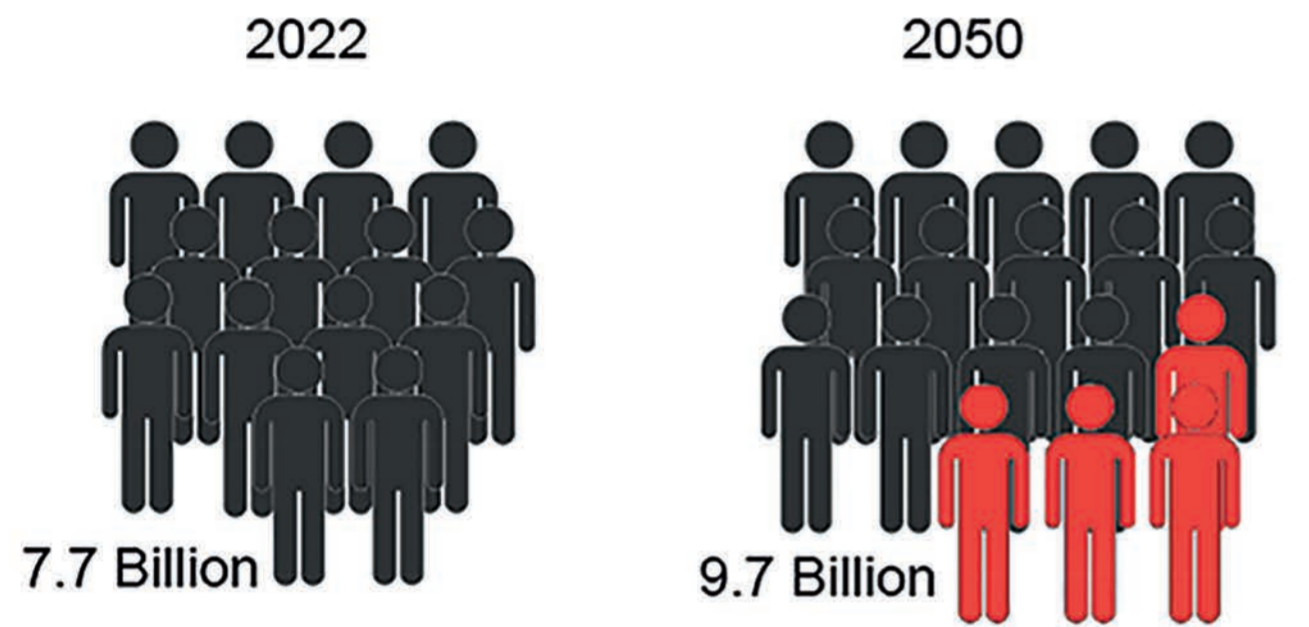


# Concept

In the aspect of food sustainability, 3D Food Printing Technology is here to stay in the long run. 3D Food Printing has the potential to supply an ever-growing world population, in which the traditional method of manufacturing food was not enough. As we currently don't have the space to grow enough food, this idea is being used to save space and resources.

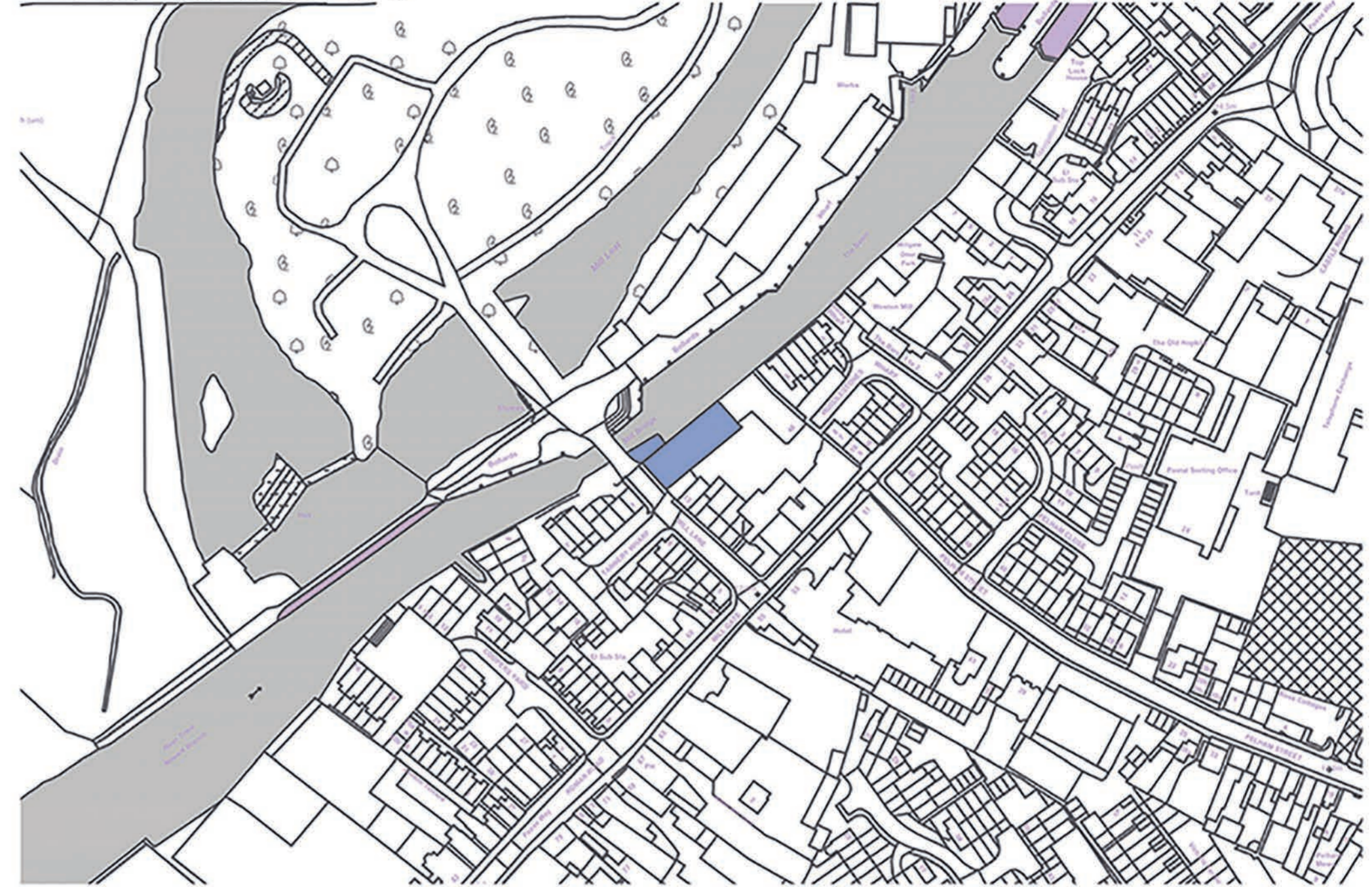
## Population



2 billion more people = 70% more food

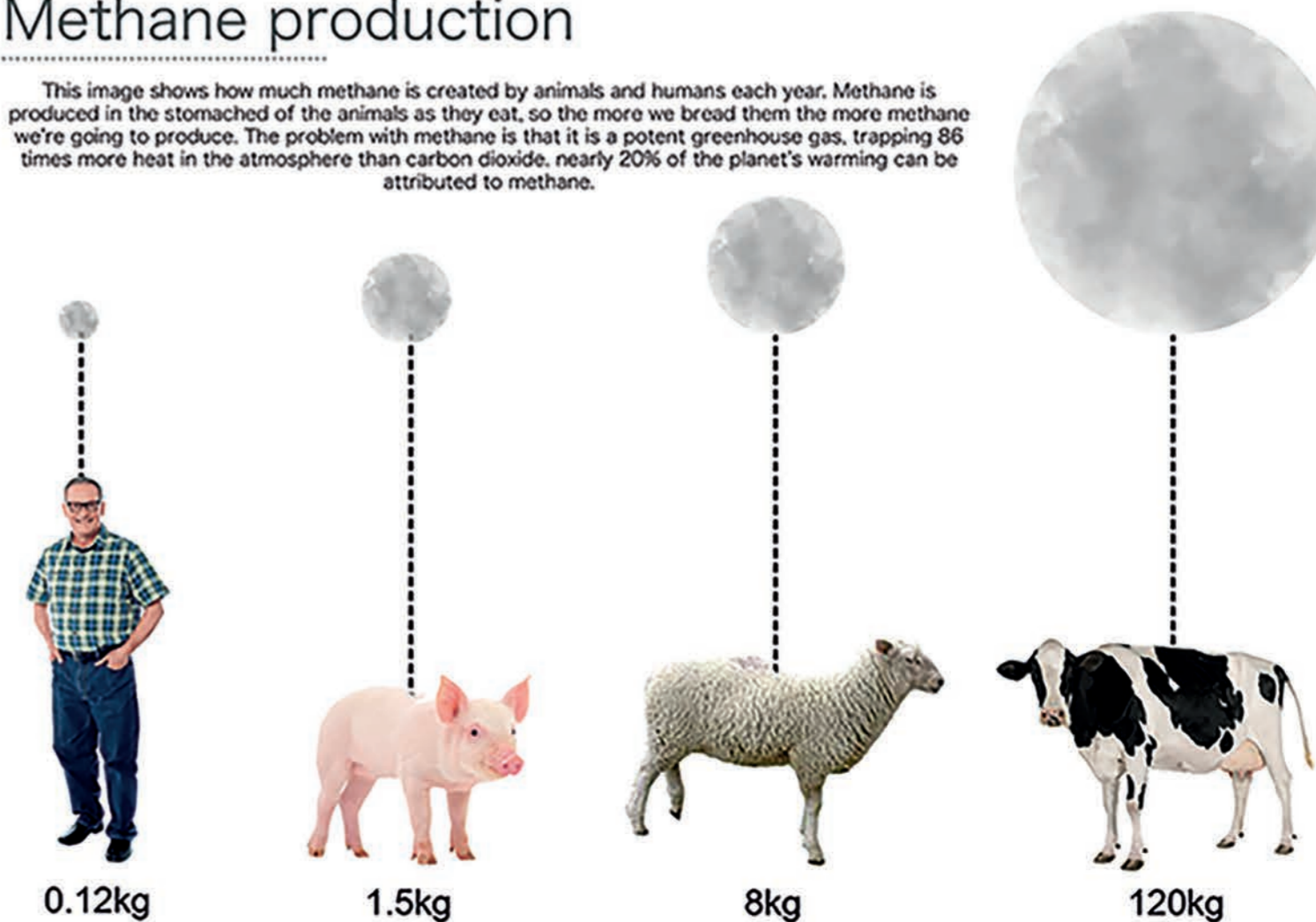
1 figure = 500 Million

Site Map - scale 1:1250 - DN 10



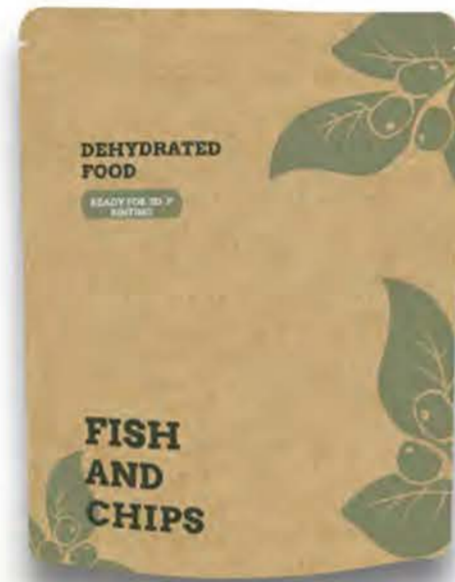
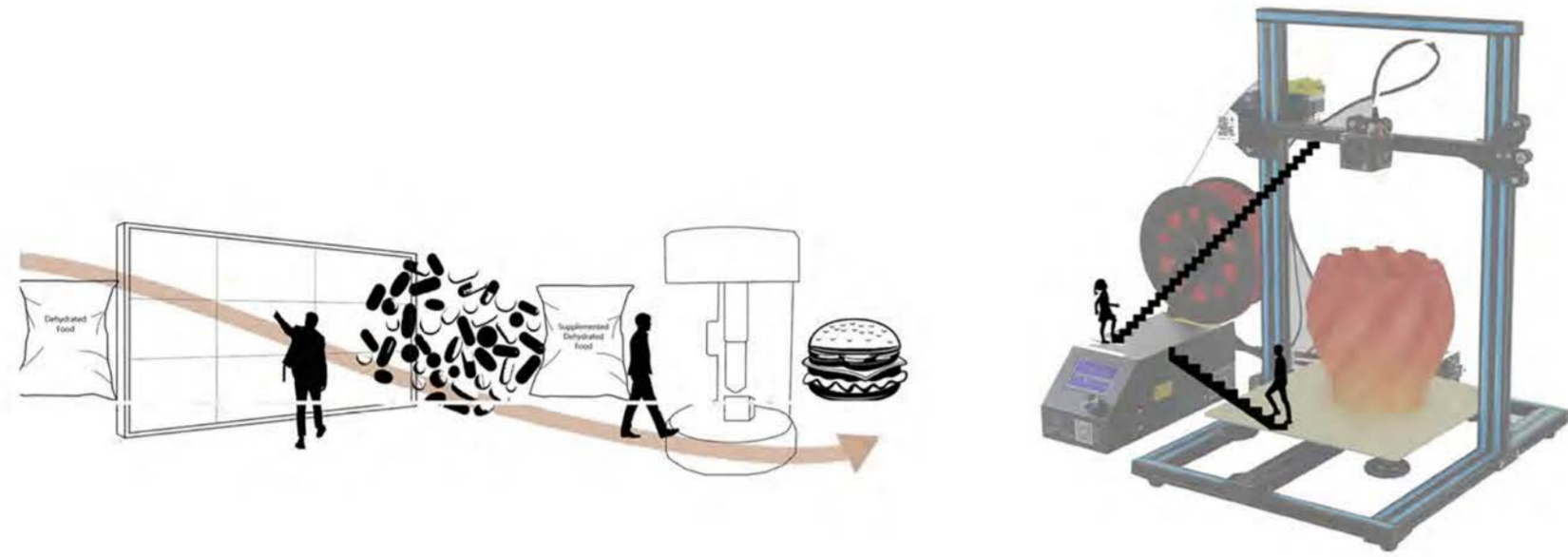
## Methane production

This image shows how much methane is created by animals and humans each year. Methane is produced in the stomachs of the animals as they eat, so the more we breed them the more methane we're going to produce. The problem with methane is that it is a potent greenhouse gas, trapping 86 times more heat in the atmosphere than carbon dioxide, nearly 20% of the planet's warming can be attributed to methane.



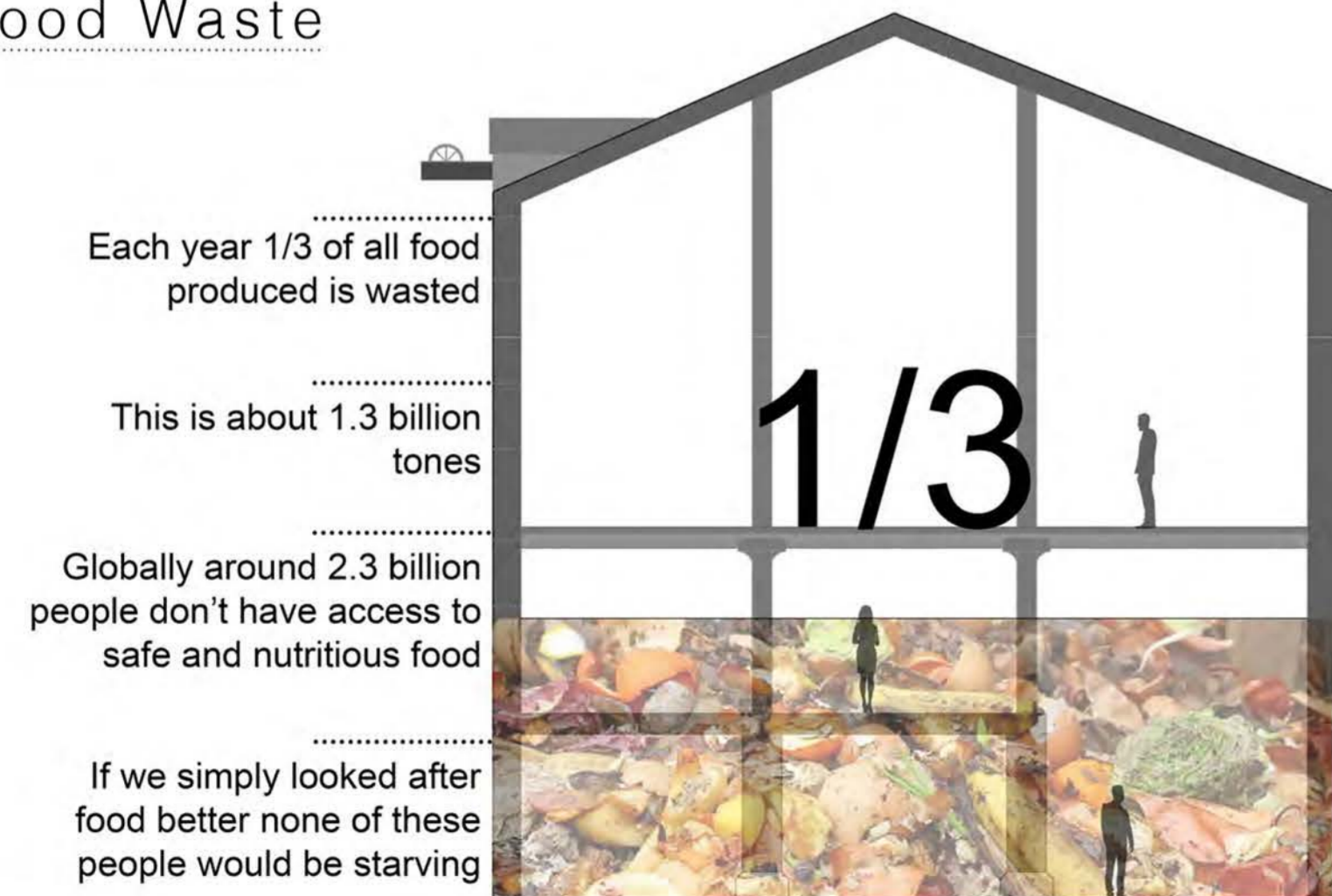


## 3D Printed Food

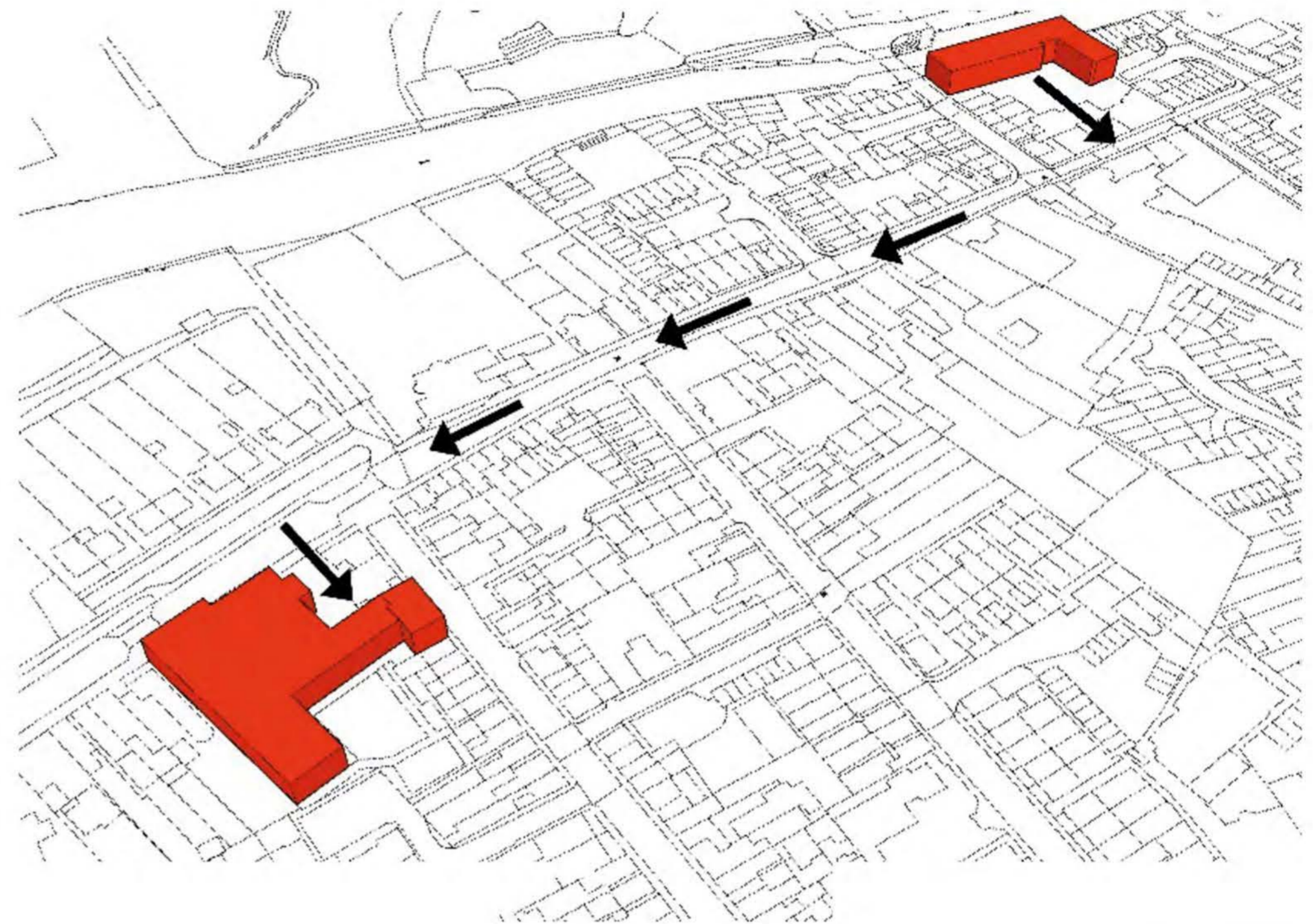


Sustainable packaging

## Food Waste



## Navigation House, Newark



## Client

3D Food Printers follow digital instructions, that makes it easier for the user to create personalized food adjusting the correct percentage of nutrients required for each person. This can be used for working with more venerable people and providing them with a meal that contains all nutrients, medications, dietary requirements that they need. Around the corner to the navigation building is Millbank care home, the building is collaborating with them and their patients.



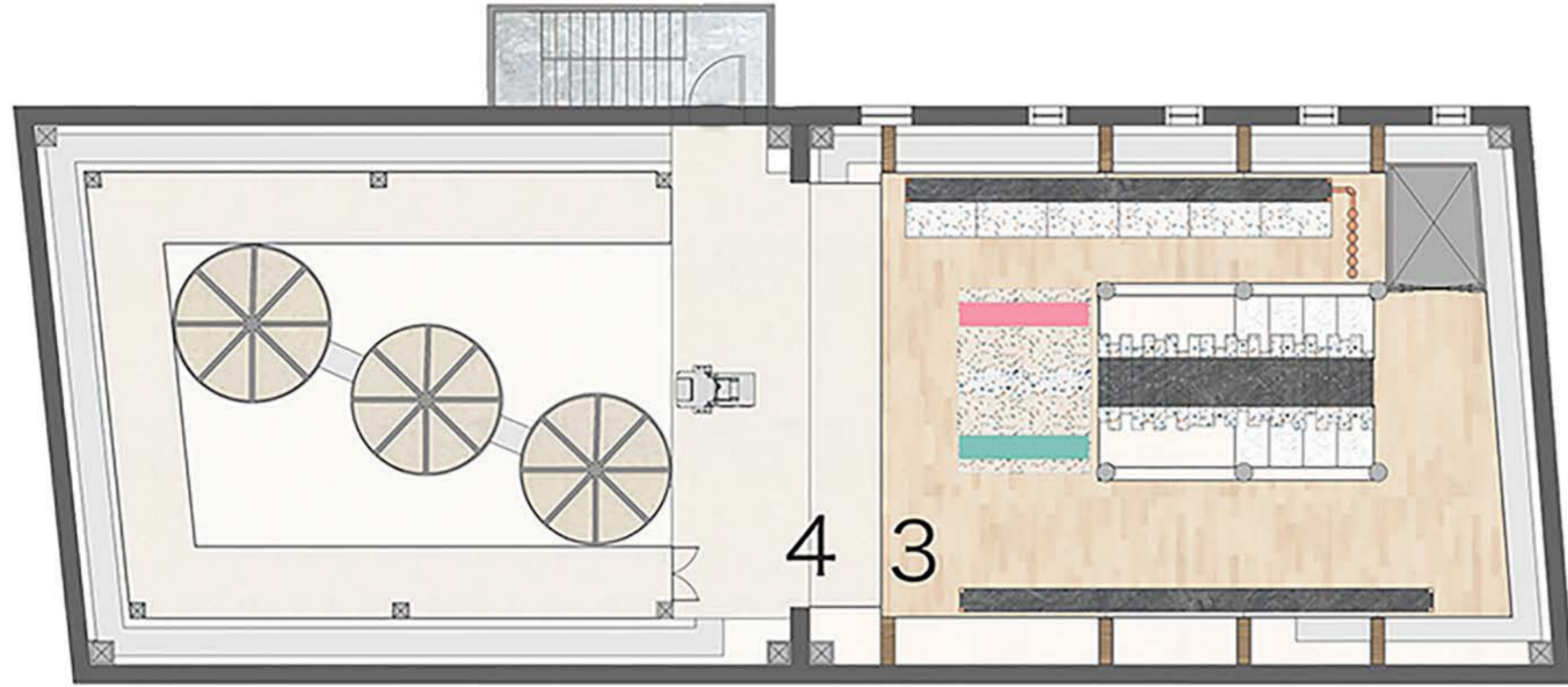




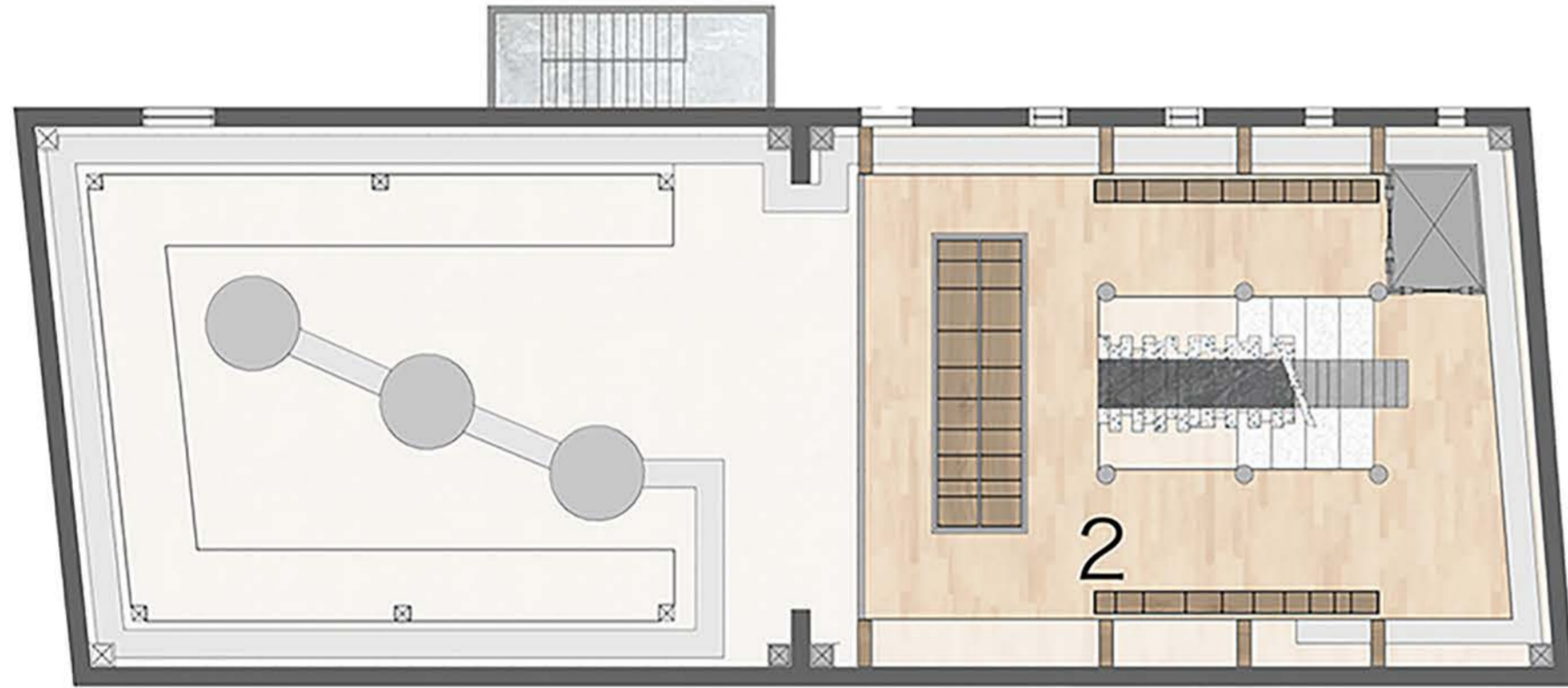
# 3D Printed Food

Year 2050

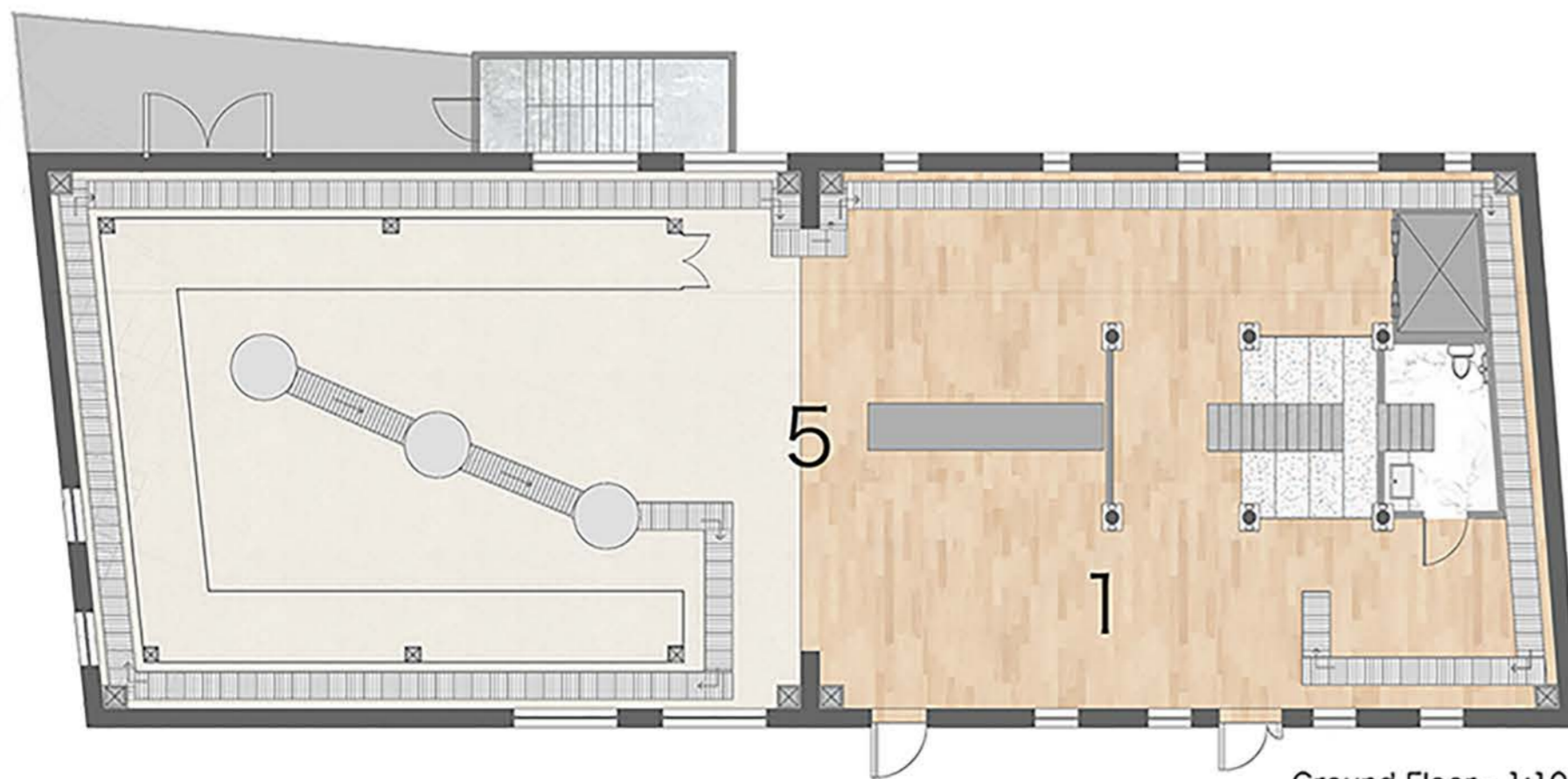




Second floor - 1:100



First Floor - 1:100



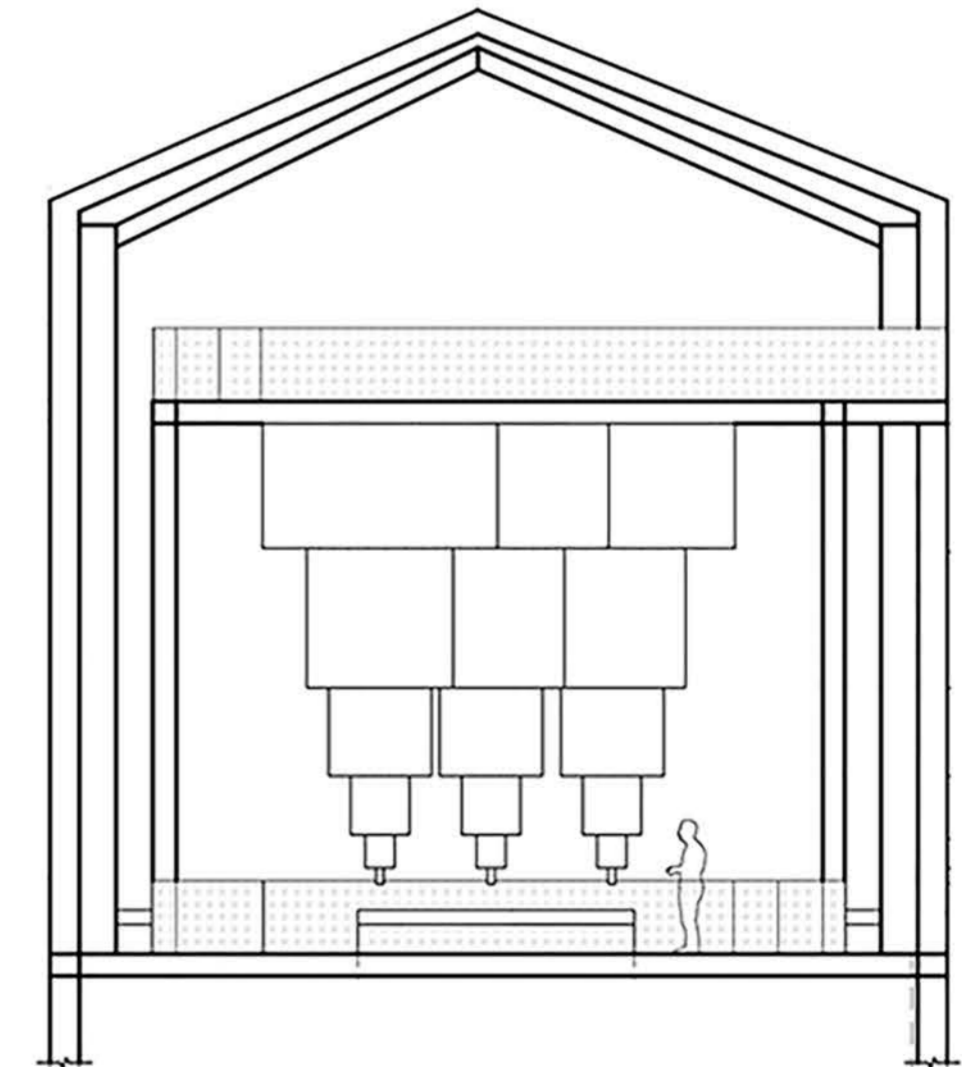
Ground Floor - 1:100



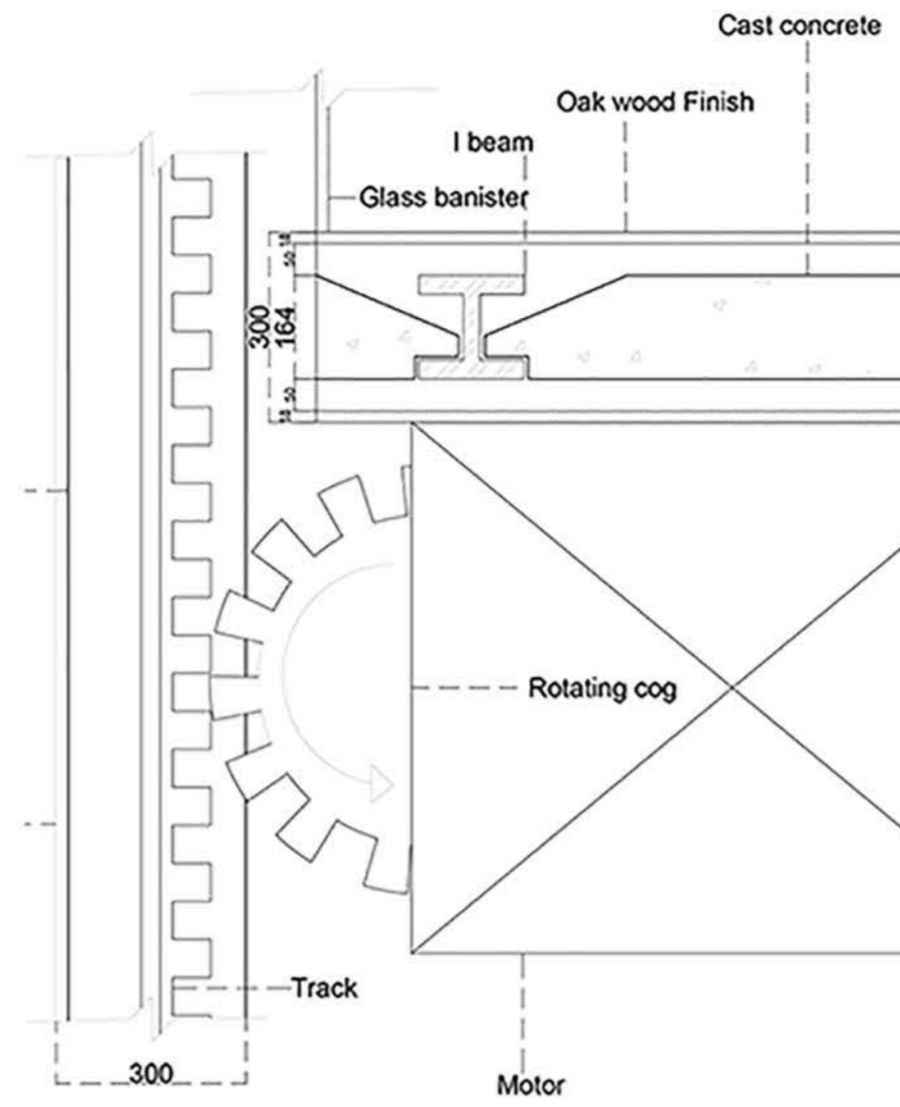
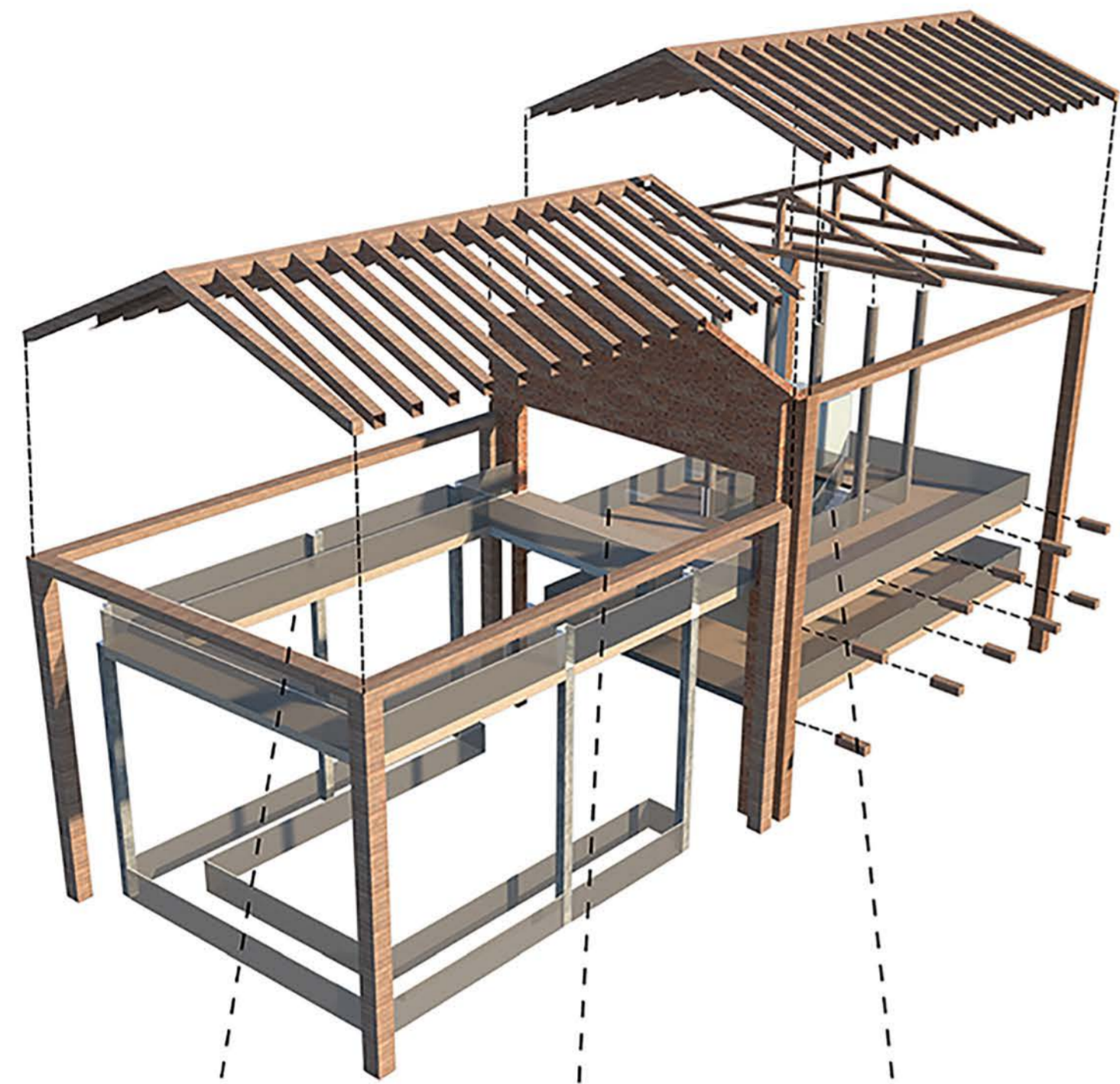
1 - Welcoming Space/ Education zone



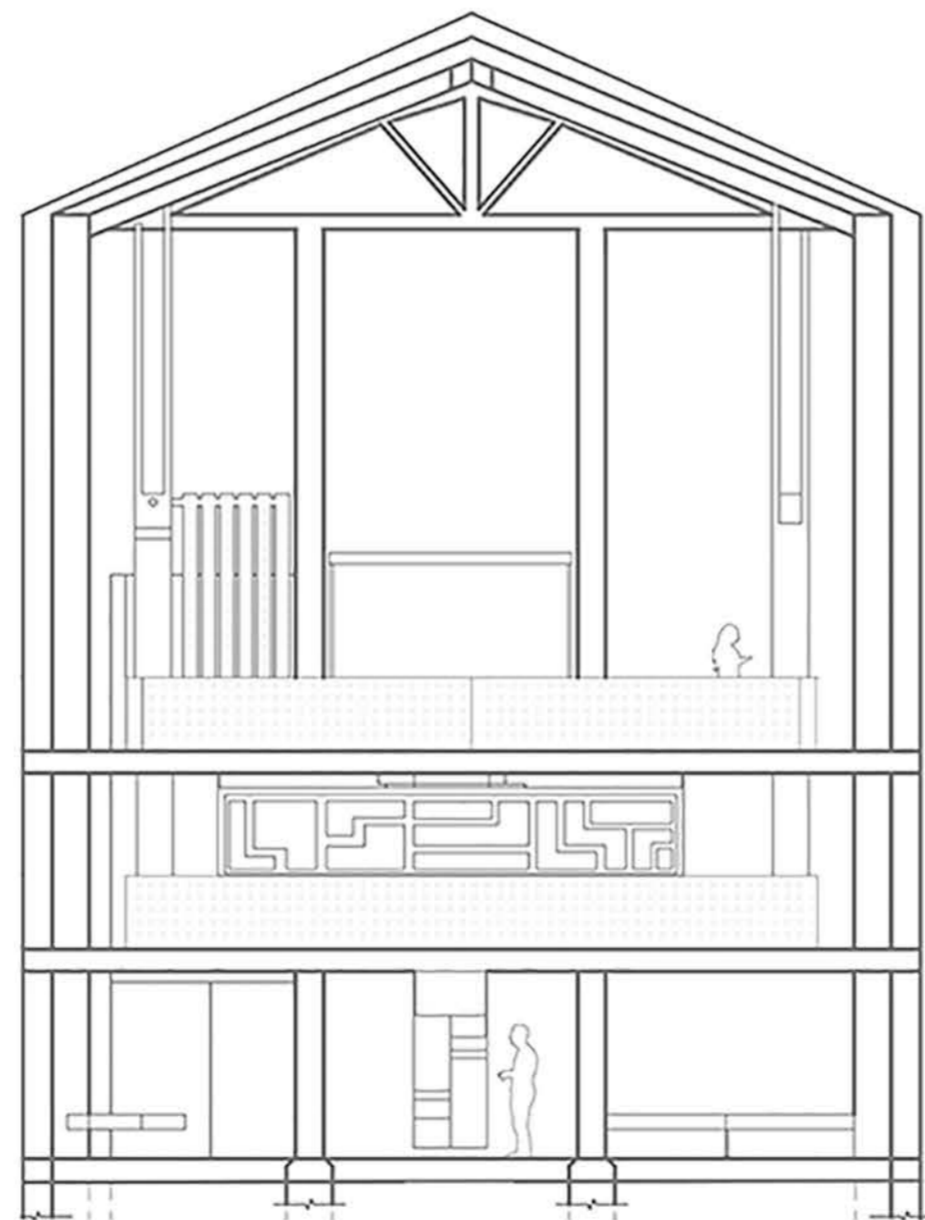
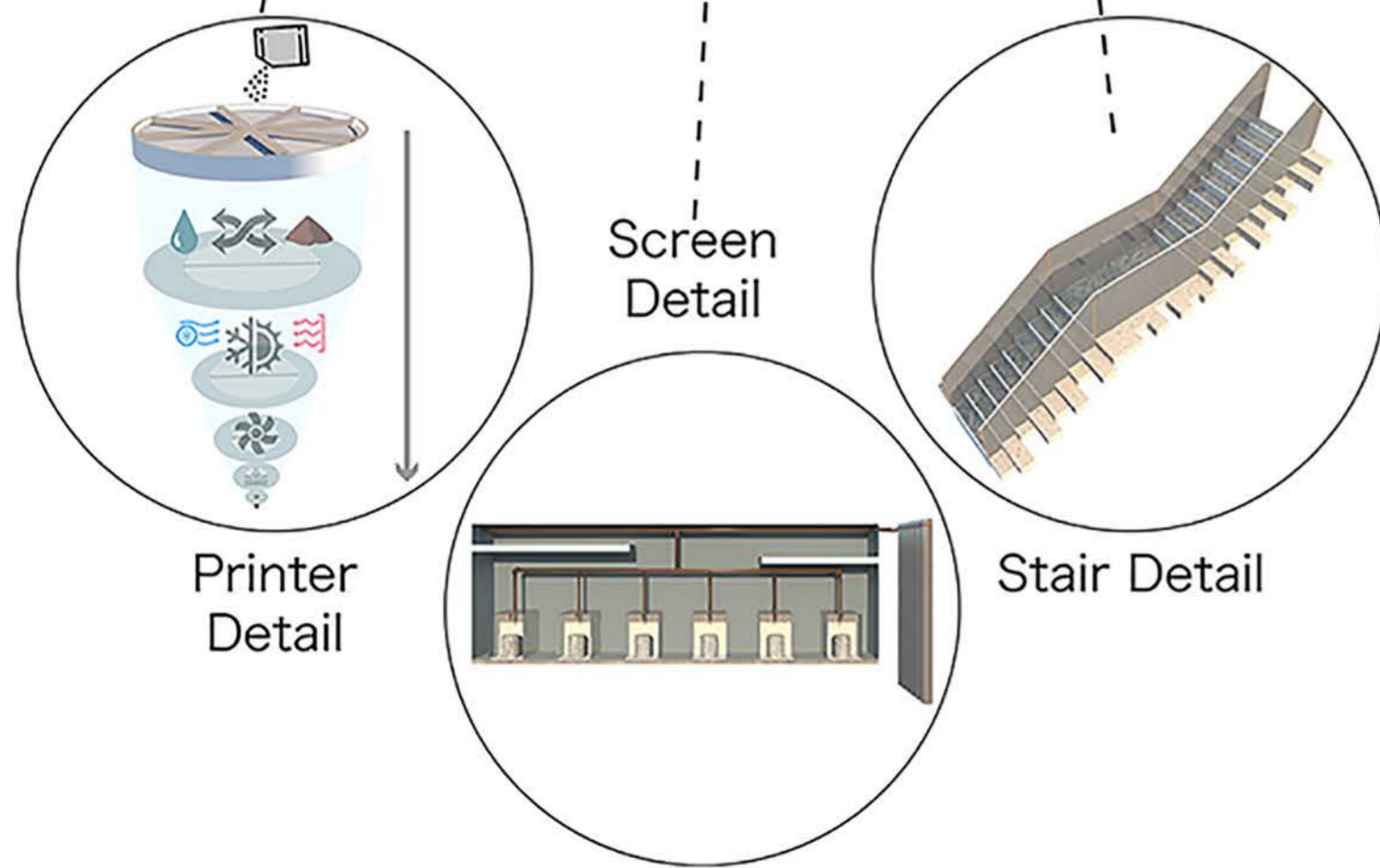
2 - Selection Area For Dehydrated Products







3 - Personalisation Screens And Support Point



4 - Top View Of Printers And Moving Platform Entrance



5 - Bottom Of Printers And Conveyor Belt