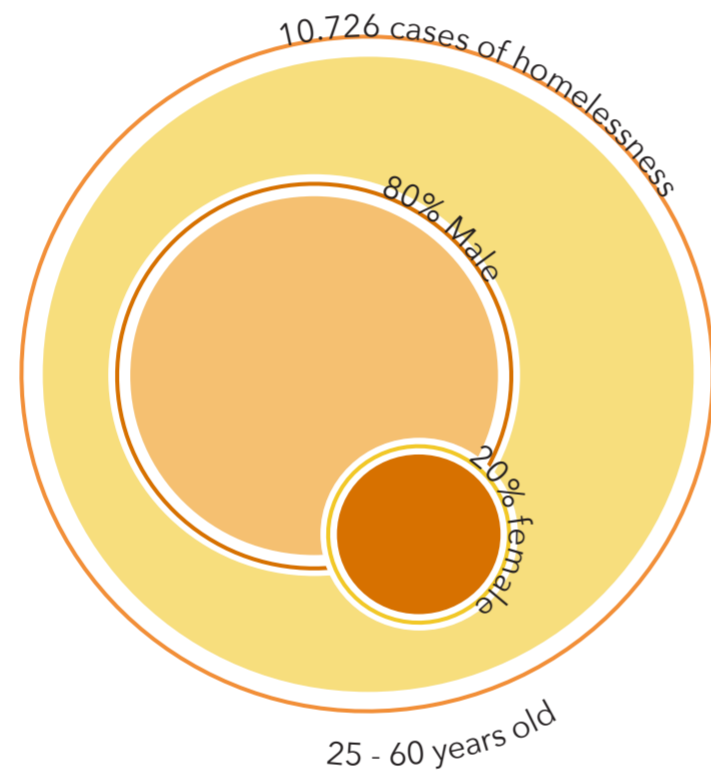
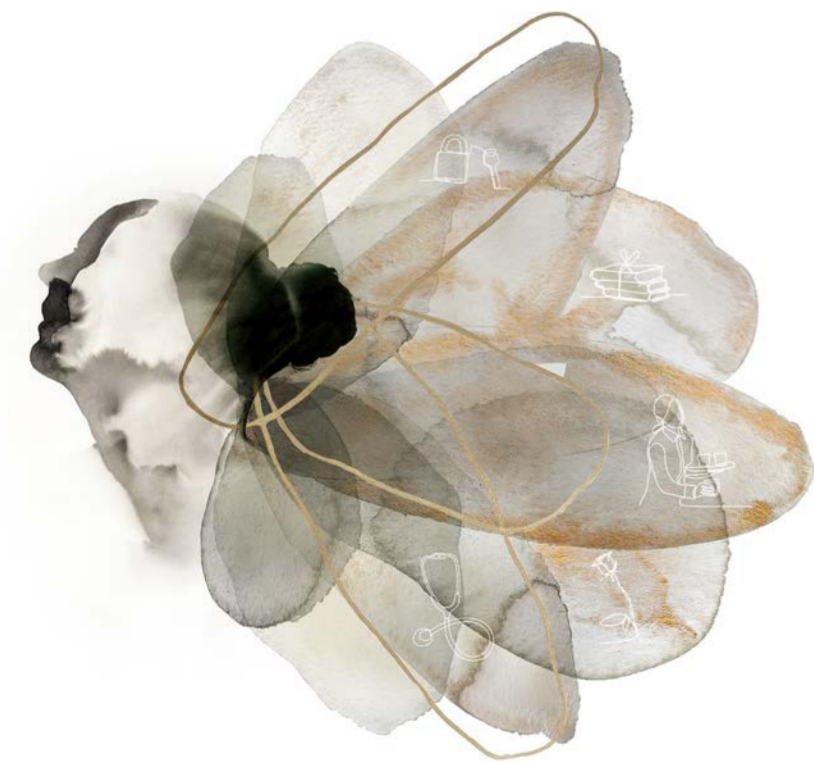


HARMONY  
EUSTON STATION



#### WHAT IS THE PROJECT ABOUT?

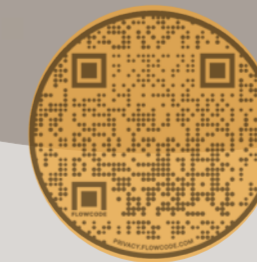
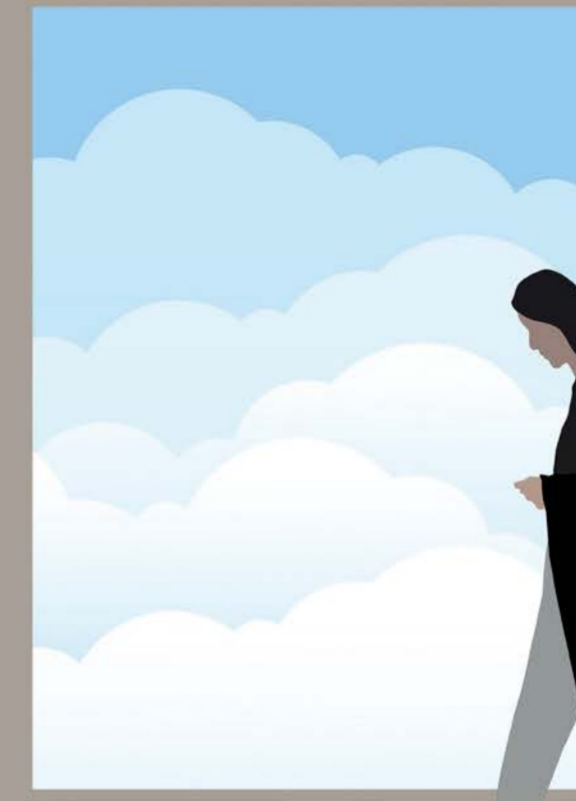
The project is about developing shelters for homeless women that offer a retreat that will benefit their lives to rehabilitate and reintegrate into society; In relation to the shelters, Euston Station offers the best opportunities and surroundings for the residents while living in the shelters. Raising the societies awareness for homelessness in general and the role of a woman in our society will benefit the outcome of the project.

The shelter village provides sustainably sourced materials & an authentic communal environment with 12 pods for homeless women to recover from their traumas they have experienced on the streets and before, where aspects of being a woman are taken into account.

Offering a mid stay accomodation of two to three years to fully reintegrate the resident back into a social life. Period can be extended when residents needs more time. The environment will increase the process of healing, support & reintegration while establishing new opportunities & a healthy mind for a better future.

The space is designed for homeless women from 20 to 65 years old living on the streets in London & suffer from poor health, traumas and abuse. Focusing on the most vulnerable group of homeless people in London to offer the chance of a new beginning by providing stationary help, integration assistance, mini job opportunities, medical and psychological support.

ENTRANCE



PAULA  
GOEBEL INTERIOR DESIGN

# THE VILLAGE

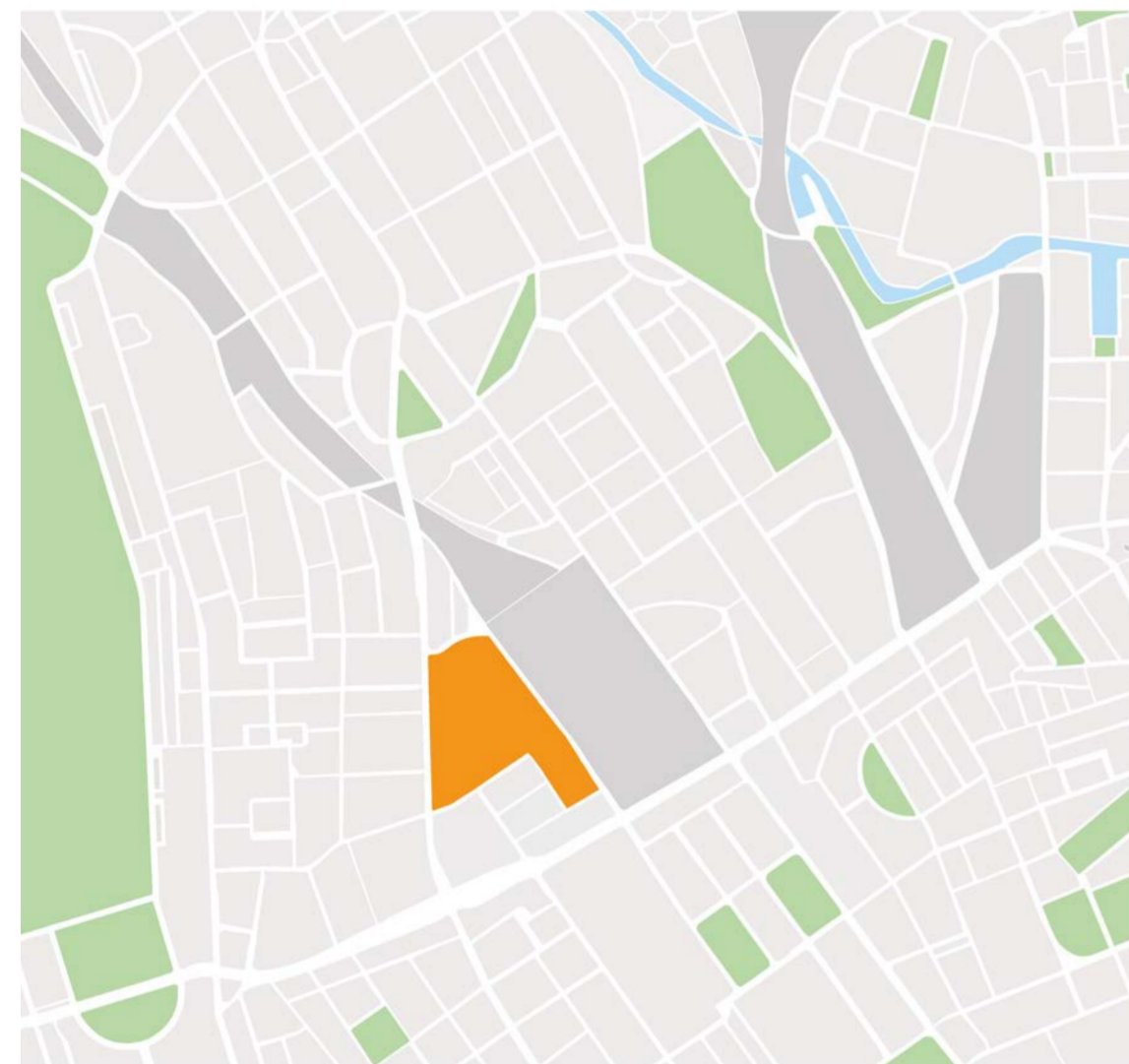
## SPATIAL CONCEPT

Station



Euston station is surrounded by many charity shops, shelters, community houses and medical care centres that benefit homeless people around London. Because of this neighbourhood, the Harmony village will offer new opportunities for homeless people.

The village placed close to the Station will help to establish a new society. Villagers will benefit from the near to the station without getting disturbed.



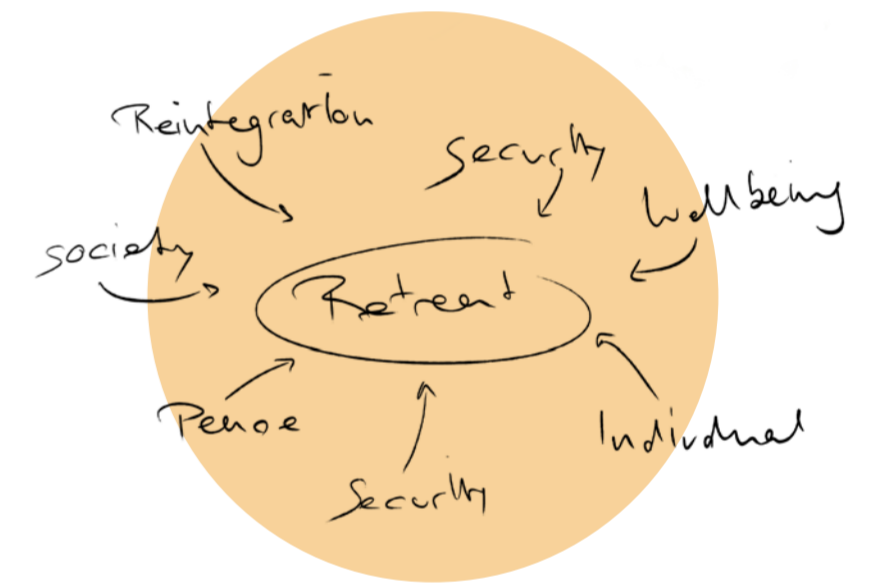
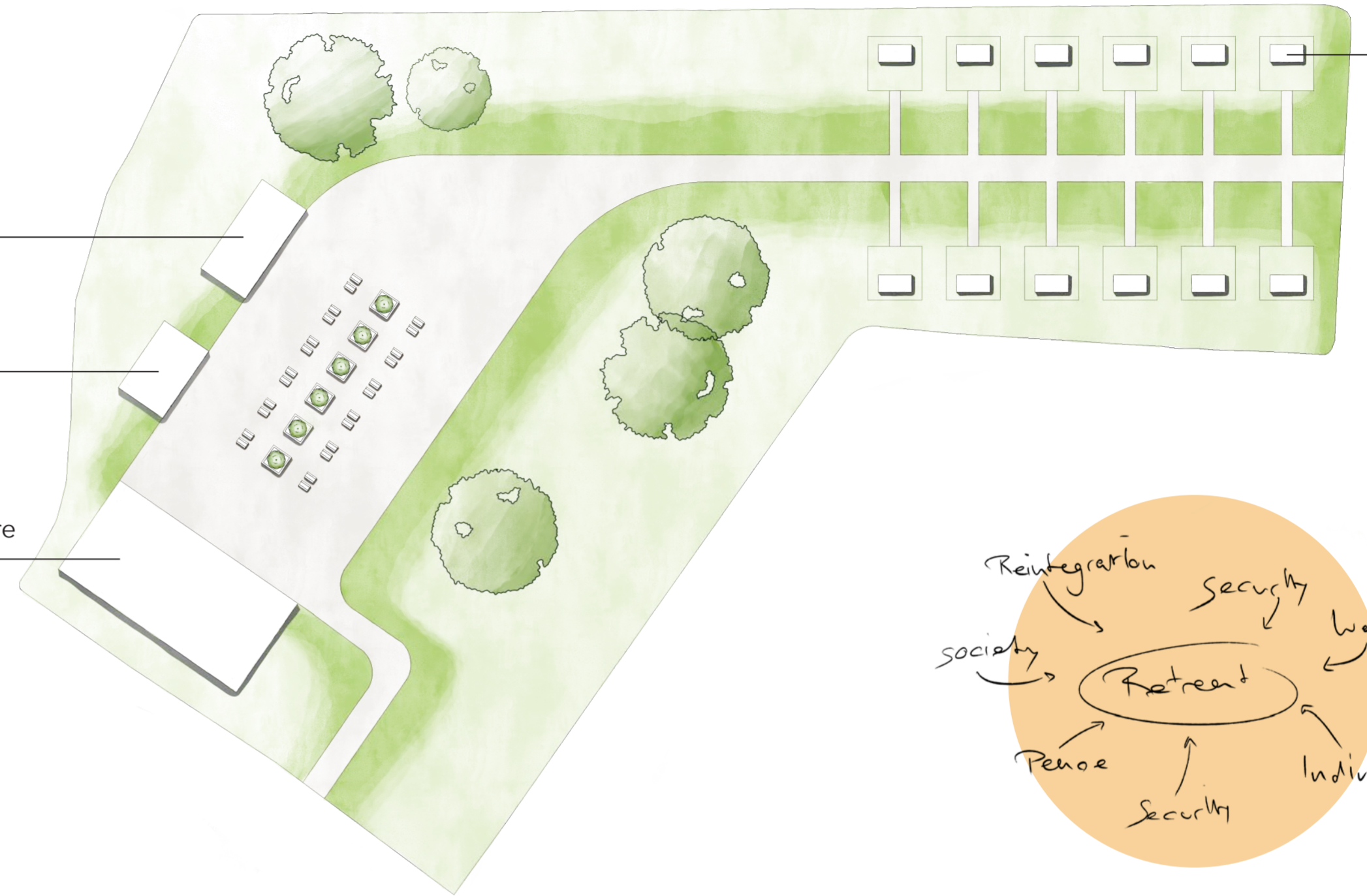
MAP

Pods

Laundrette

Therapy

Community centre



The village provides a community centre including a shared kitchen and library, a laundrette, a therapy centre and the residents homes. A park surrounds the buildings for a positive green surrounding.

The residents will develop routines, learn to communicate, organise and compromise during their stay. It benefits them by socialising, integrate & taking care of themselves.

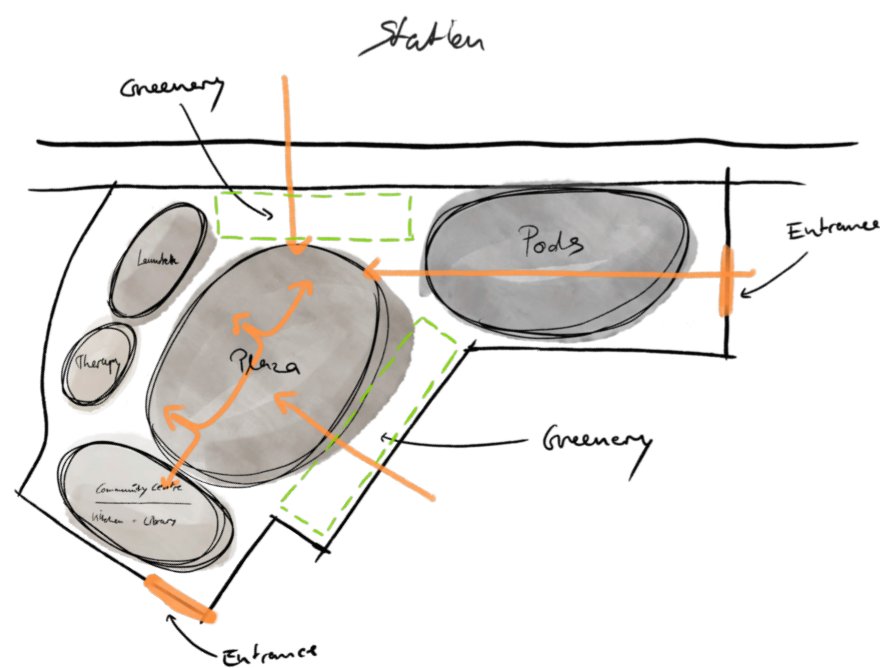


LAUNDRETTE



LIBRARY

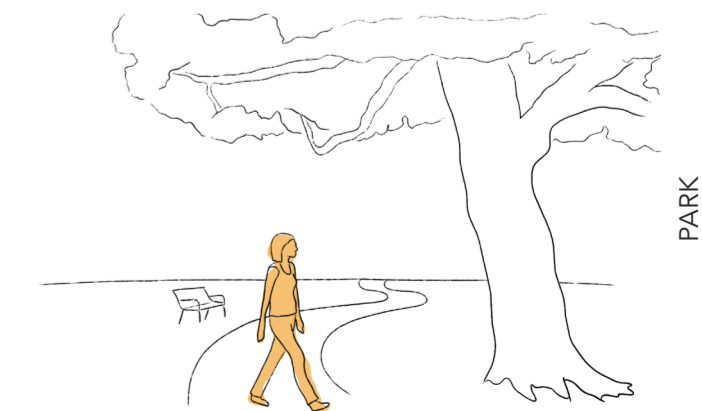
PROGRAMME



KITCHEN



THERAPY



PARK

# THE HOMELESS SHELTER

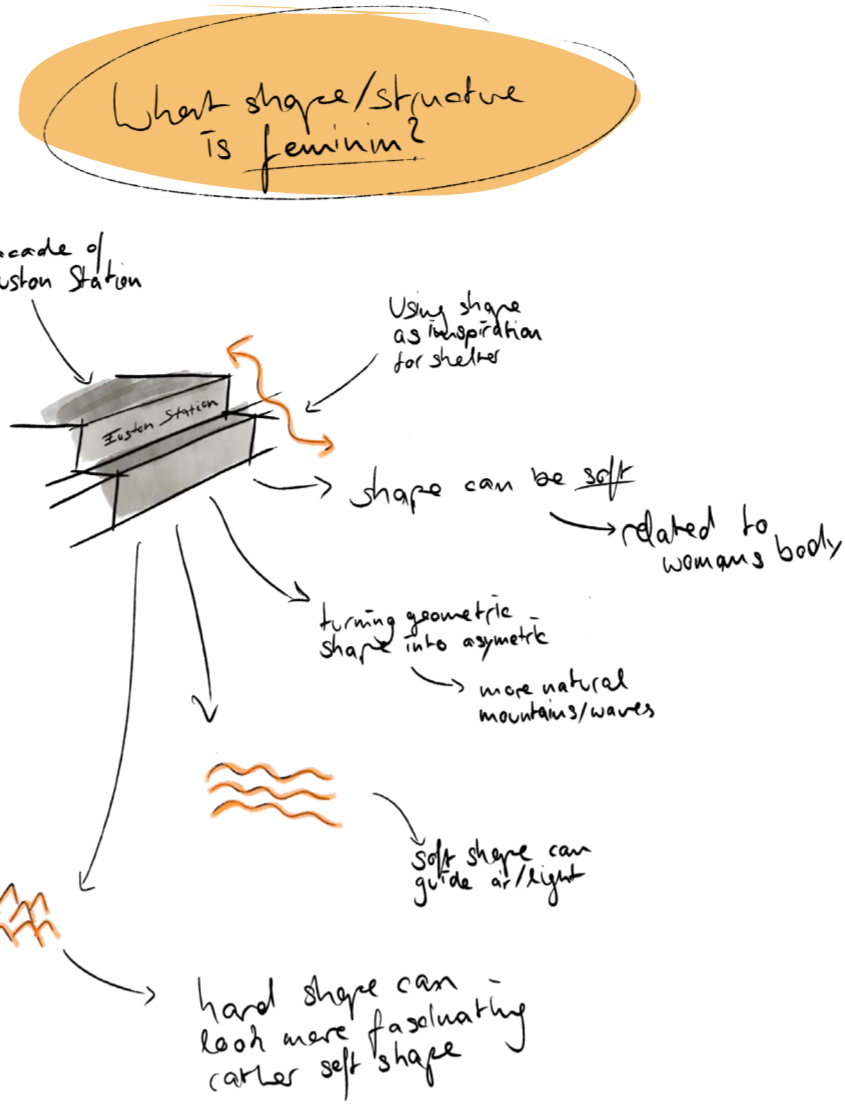
## SPATIAL CONCEPT

The pod response to the needs and characteristics of women to offer the best support and opportunities for them to change and grow.

The layout break down the pod in 3 areas. Each of the areas serve the needs of the resident. The designed layout provides separate spaces to increase safety & security. The resident has the various seating opportunities inside the pod that invite to rest.

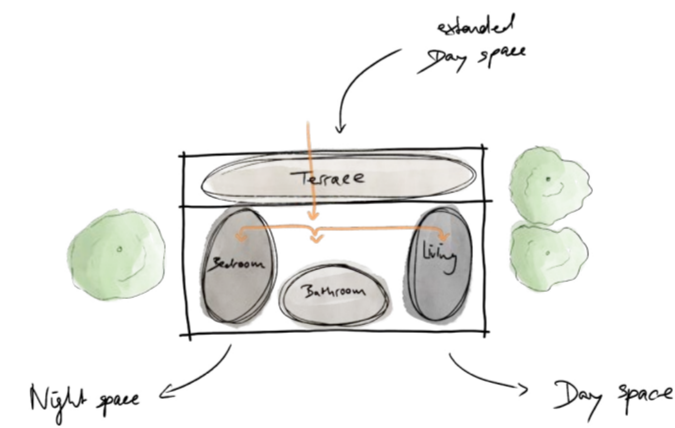
The functional terrace offers various of opportunities of use to the resident. Through the moveable swing chair the resident can change the layout & so its privacy.

The chosen sustainable based materials have an calming impact on the residents environment & feeling.

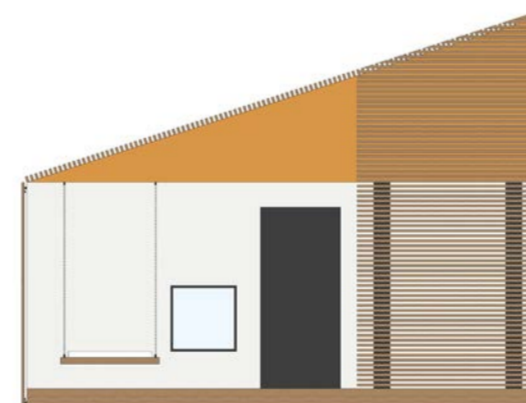


## EXTERIOR

SECTION



Programme of the pod



Elevation showing the entrance of the pod

PLAN



### OPPORTUNITIES

Metal rail to move the jhoola to right side of terrace; rail can also be used as clothes line.

More opportunities for residents

### INDIVIDUALITY

Space for handmade house signpost created by resident

### PRIVACY

moveable window shutter for more privacy inside & against sunlight

### RELAXATION

Moveable Jhoola can help to reduce stress & signs of anxieties

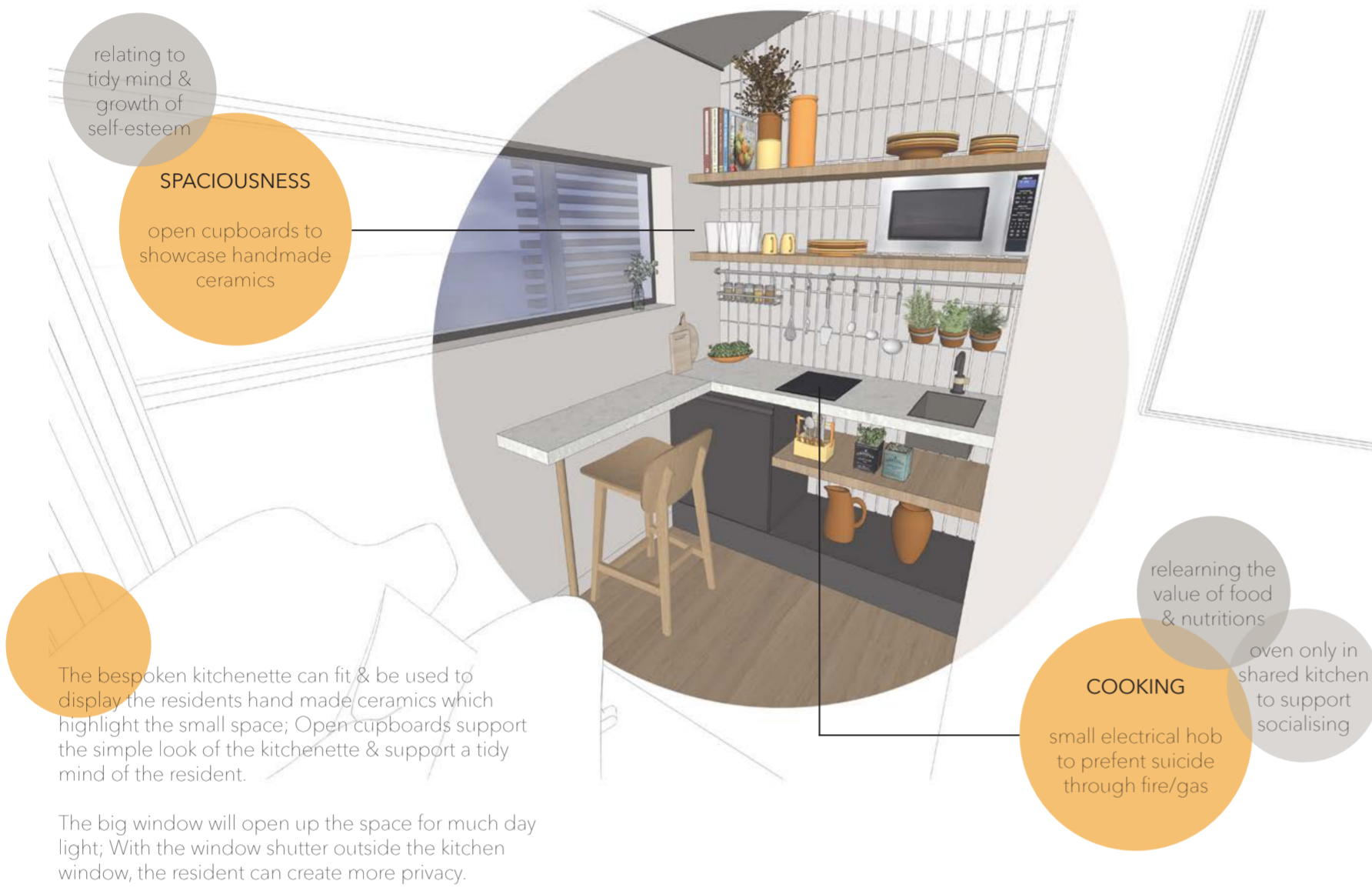
The functional terrace offers various opportunities of use to the resident. Through the moveable swing chair, the resident can change the layout & so its privacy.

The chosen sustainable based materials have a calming impact on the residents environment & feeling.

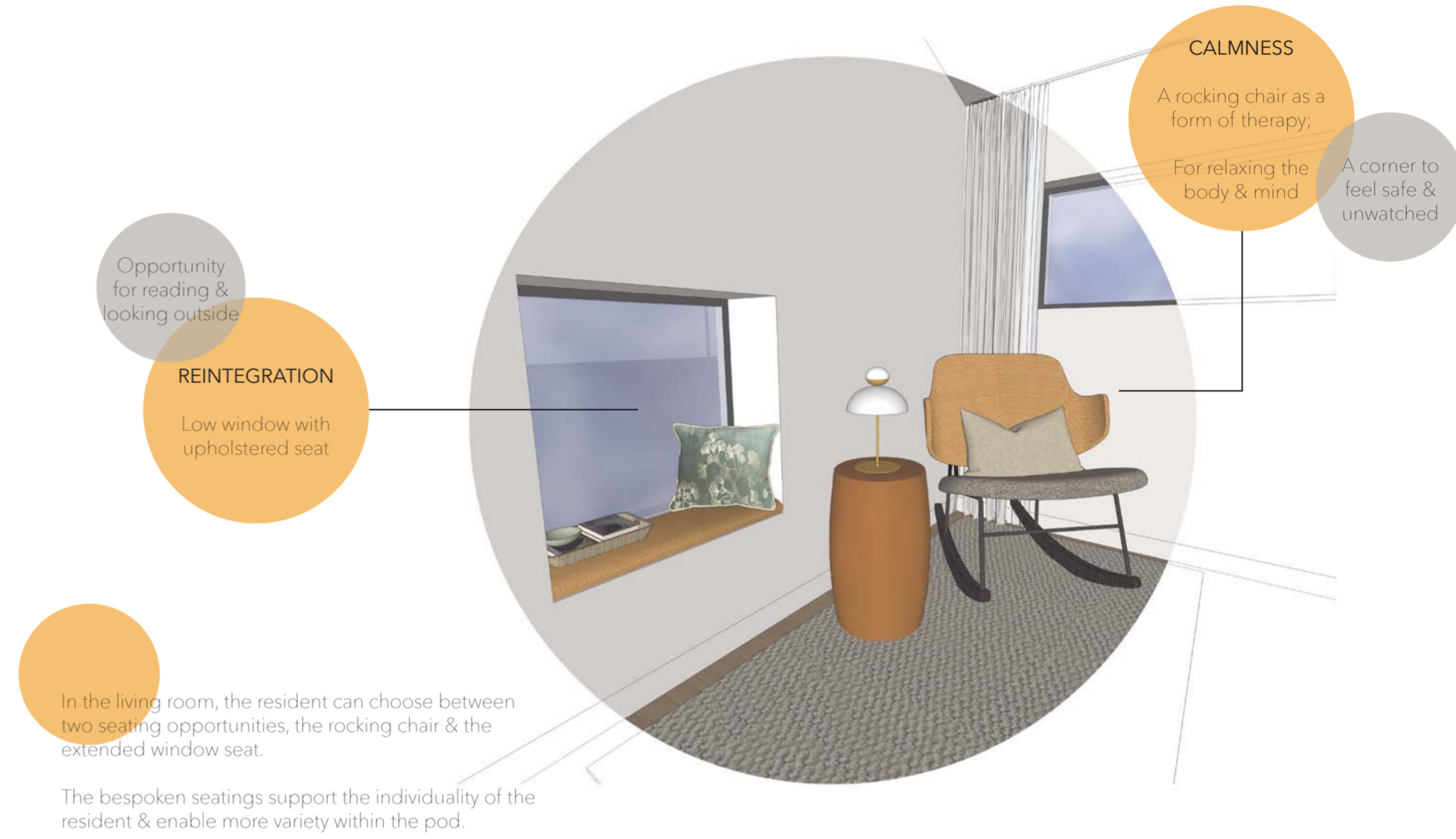
# THE HOMELESS SHELTER

## SPATIAL CONCEPT

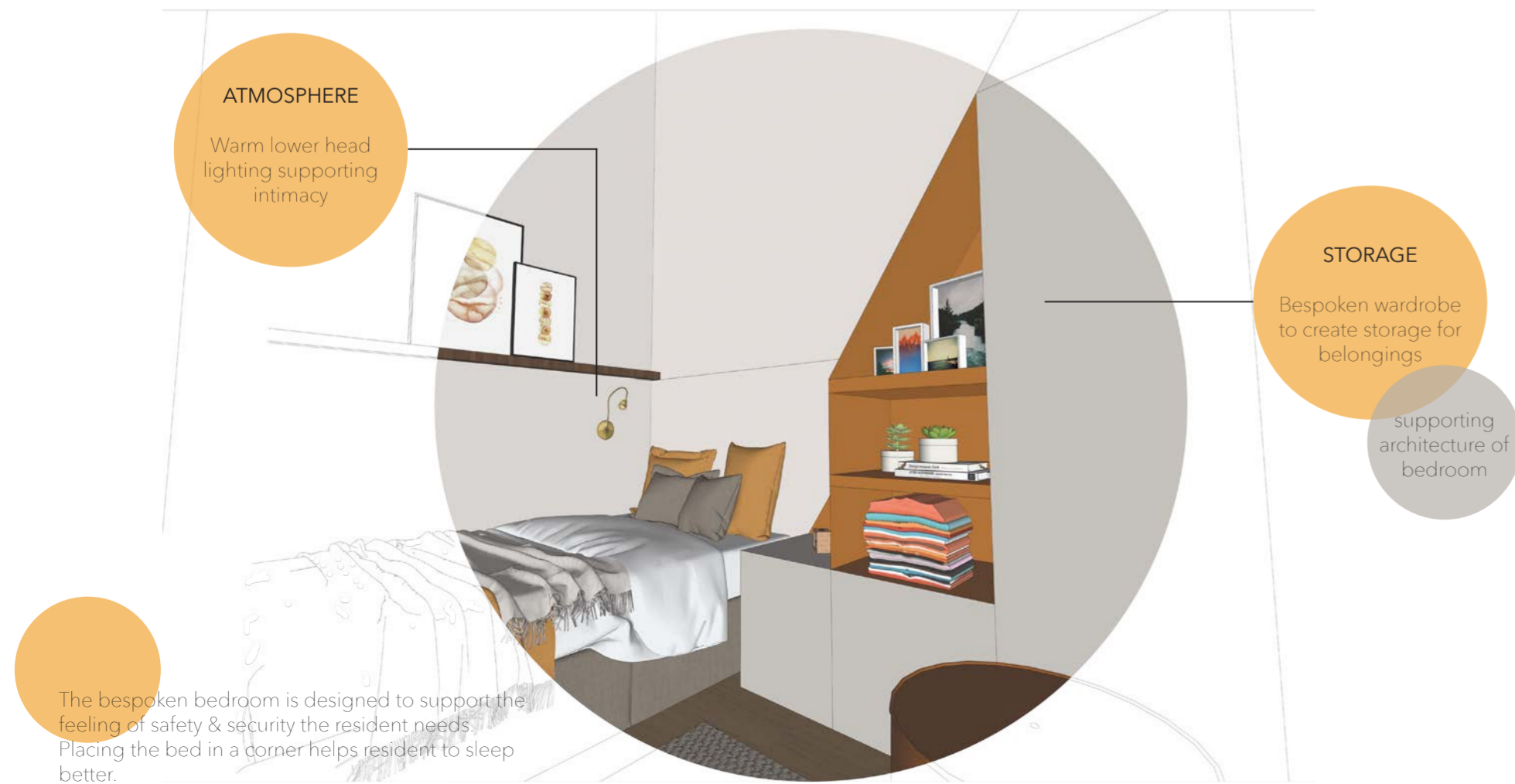
KITCHENETTE



## LIVING ROOM



BEDROOM



## BATHROOM



# THE HOMELESS SHELTER

## THE INTERIOR

“ A retreat just for themselves; For keeping them safe & secure



KITCHENETTE



LIVING ROOM



BEDROOM



BATHROOM



A secure place for supporting and reintegrating homeless women back into society. Sustainable chosen materials will support the interior. The colour concept of orange and beige will have an impact on the residents physical & emotional balance and create a feeling of stability, safety & calmness. Sustainable chosen materials will support the outcome of the interior and exterior.