

ADAPTIVE RE-USE

HISTORY

The station south building was originally used as a train station which is why there is a basement floor that runs down to the train tracks as there were two platforms on either side of that floor.



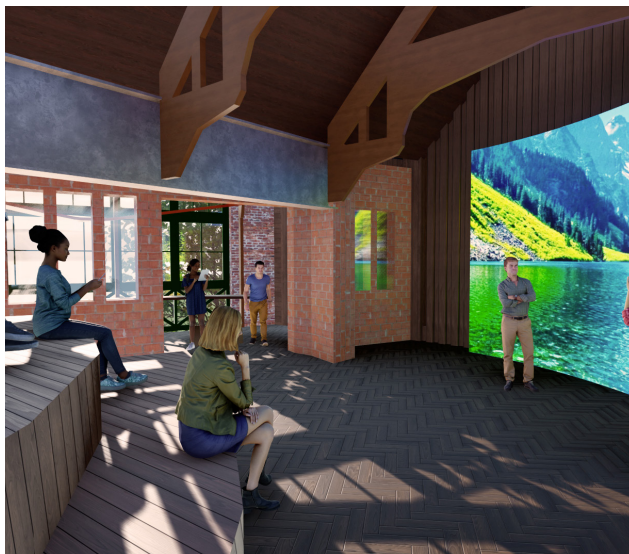
PRESENT SITE

The current state of the site is a cycling cafe that acts as a social space for the surrounding community. As well as this there is a small shop on the ground floor of the building. The building is divided by one large stone historical wall that I want to retain in the new redesign of the space.



FUTURE

The redesign of the station south building is a journey through cinema represented by five different spaces to educate visitors as they travel through the station south building. This will help to bring people together as well as help to educate students that are interested in film.



PRESENT SITE



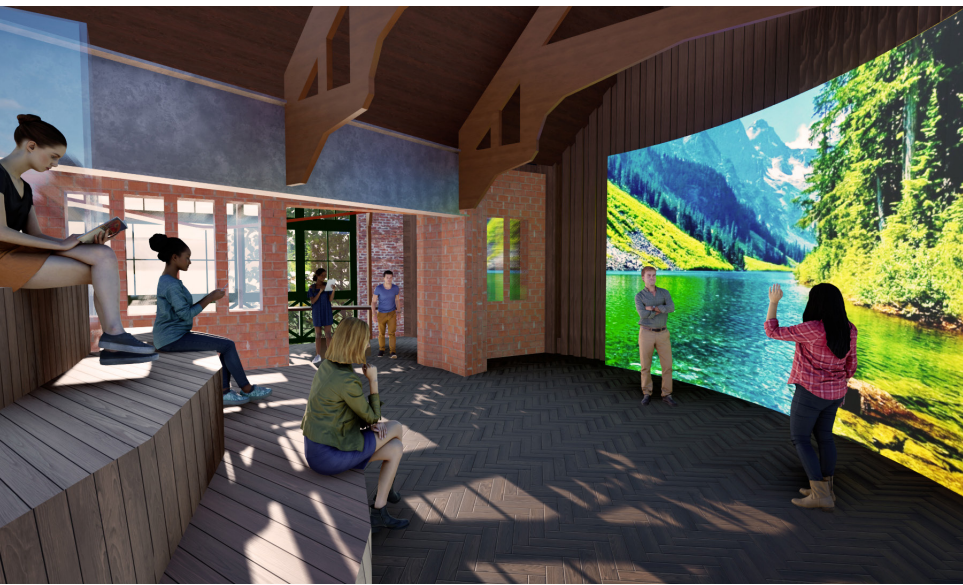
BASEMENT THEATRE/CINEMA

The basement space has been redesigned from the toilets into the cinema and theatre space.



CENTRE OF GROUND FLOOR

The centre of the ground floor has been redesigned from a cafe space to a presentation and acting space.



EDITING SPACE

The south of the ground level has been redesigned from a small shop space to an editing suite.



STAGE DESIGN SPACE

This space is transformed from a cafe space with large windows into a stage design space with an organic table and lighting feature.



PROBLEM

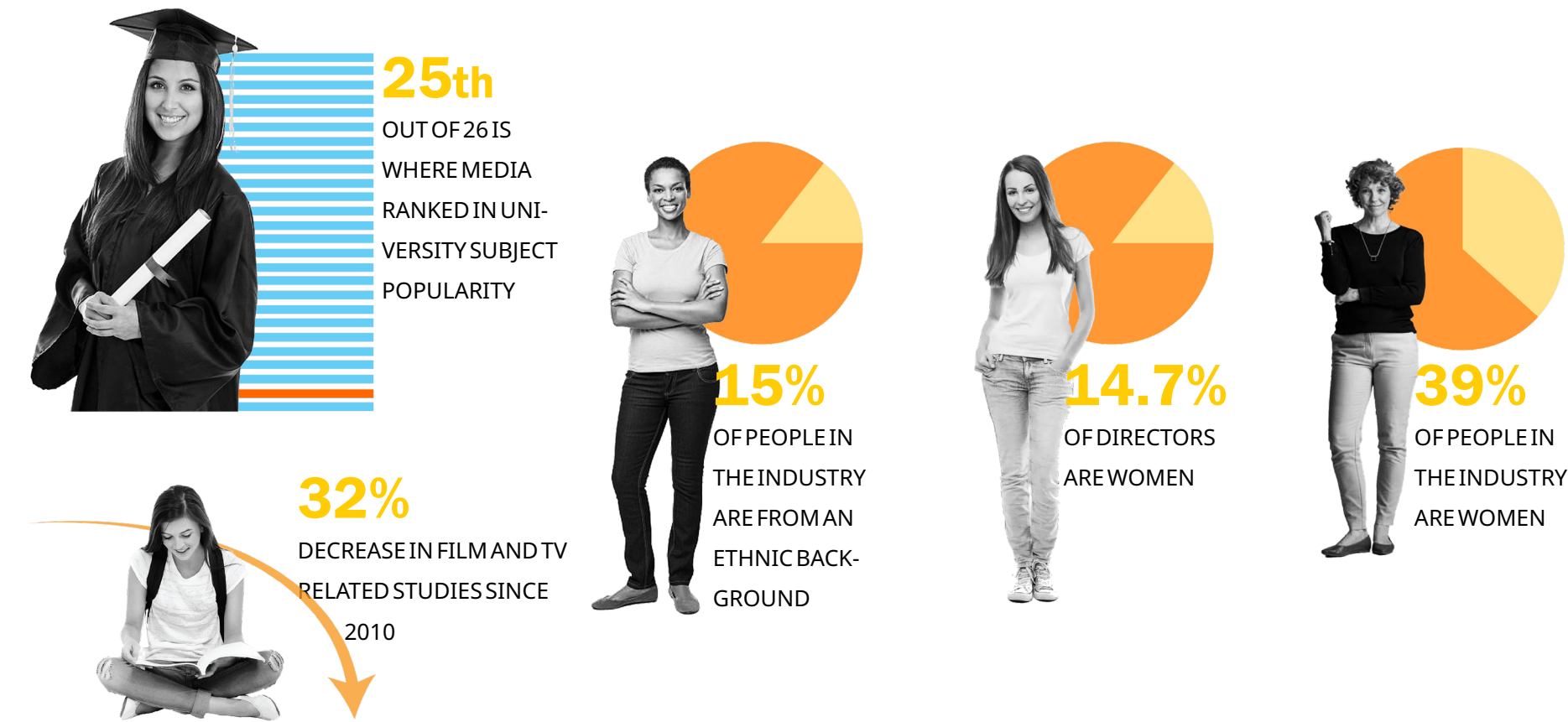
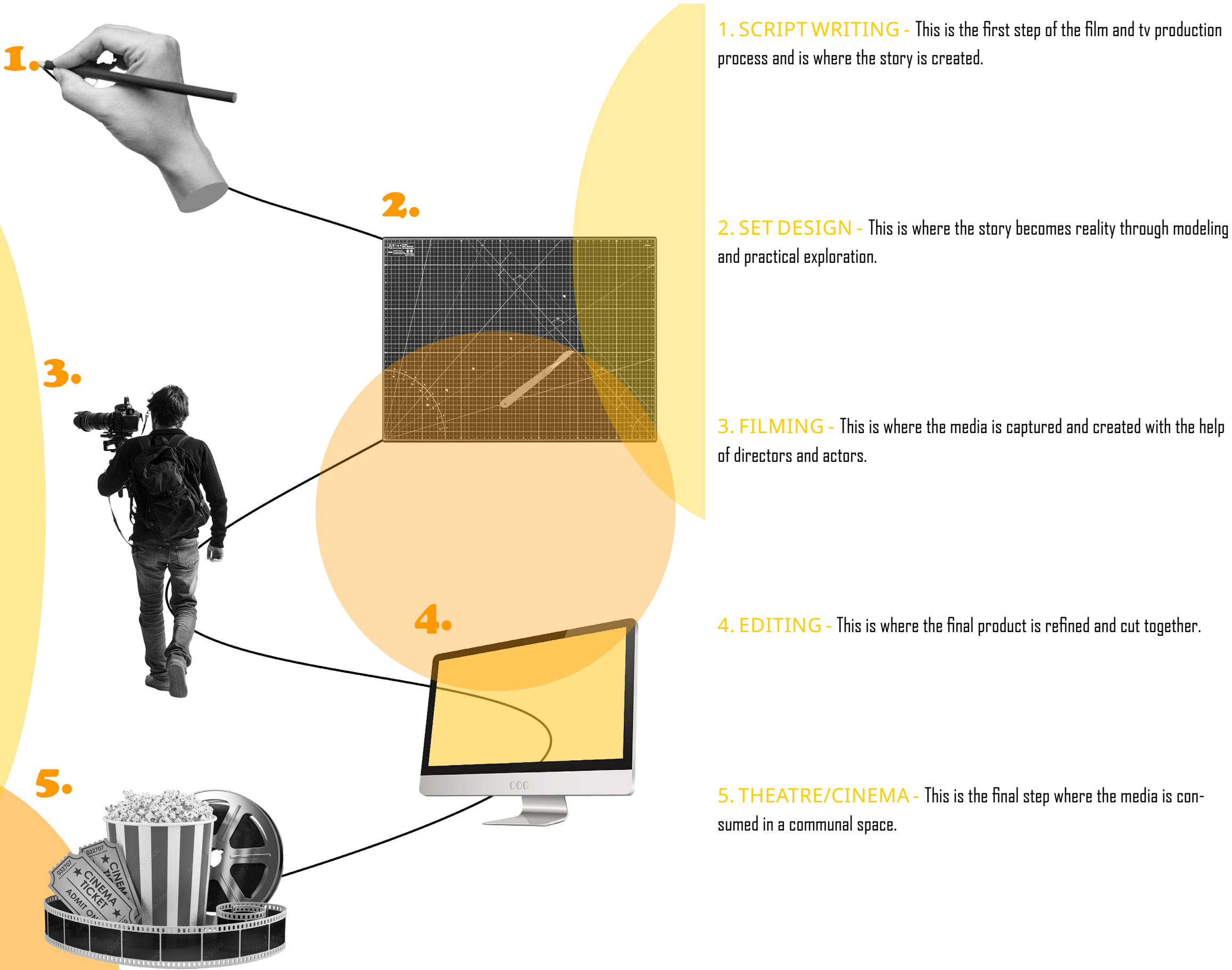
There is a lack of representation in the film and TV industry as well as a decreasing number of students going into this creative industry. This has led to minorities not being interested in joining this industry and not having access to the education to join.

PROCESS

Through research into creative industries I discovered the disparity in the gender divide and ethnic background divide in the Film and Tv industry. One of the main issues causing this disparity is caused by a falling level of education in this industry. These problems could be improved through increasing accessibility to education in this creative industry as well as creating safe and inviting spaces for the underrepresented groups.

PROPOSAL

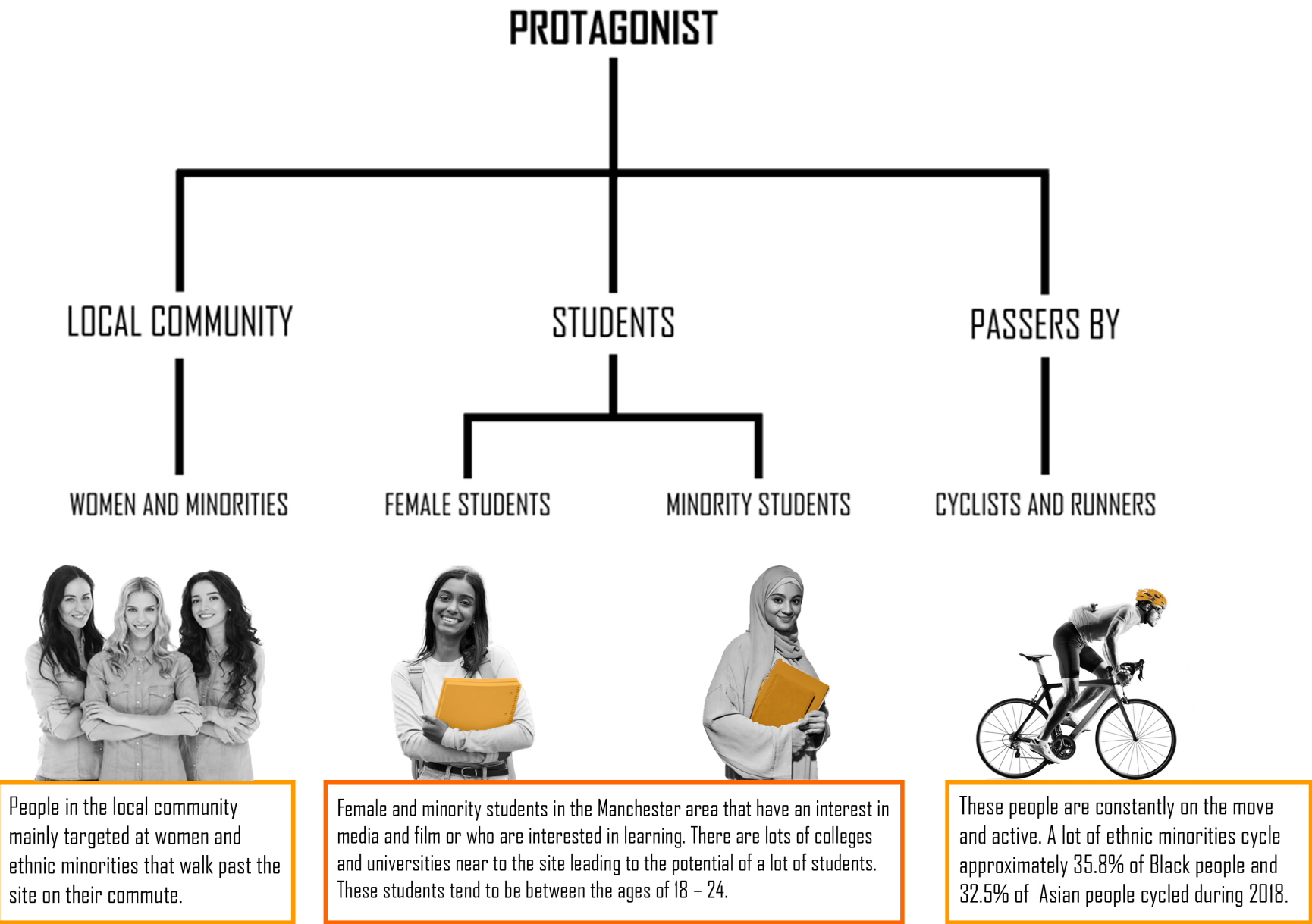
I propose an educational centre that will educate female and minority students on the process of film and TV production from development to distribution to improve representation in this creative industry by improving access to education for female and minority groups.



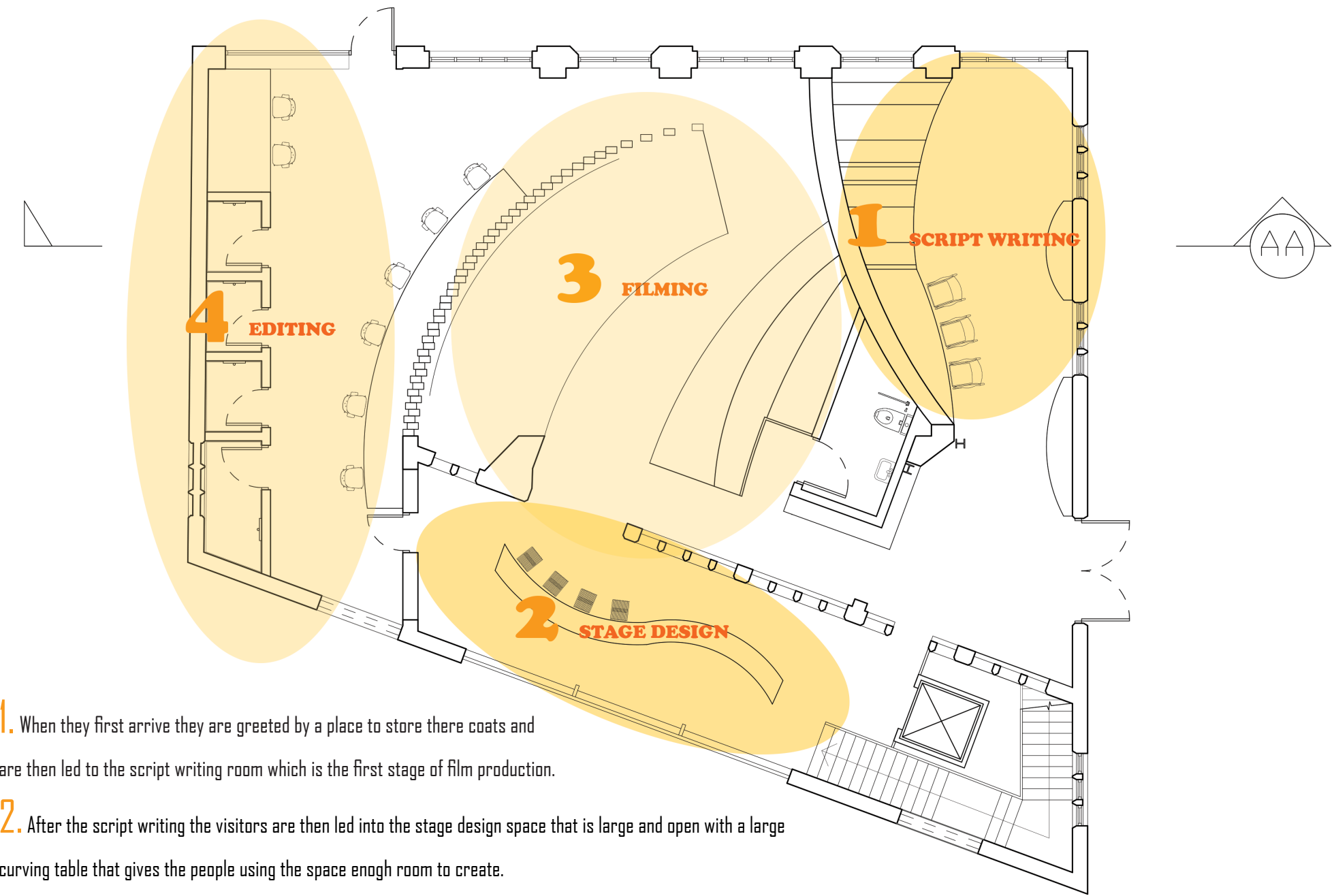
CONCEPT - THE JOURNEY

-AN ACT OF TRAVELLING FROM ONE PLACE TO ANOTHER.
-TRAVEL SOMEWHERE.

The concept for my project is **the journey** as during the film and TV production process there are many different journeys that happen from the **journey film has to go on itself from pre production all the way to distribution** as well as the **journey that the photographic film has to go on through the filming process**. Furthermore the concept of a journey is also relevant for the protagonists in this project as they will be going on there **own journey into the creative industry of film and TV**. This concept is shown in my project through the use of **organic and curving forms** that lead the visitors of the space **on a journey through the building**.



GROUND FLOOR



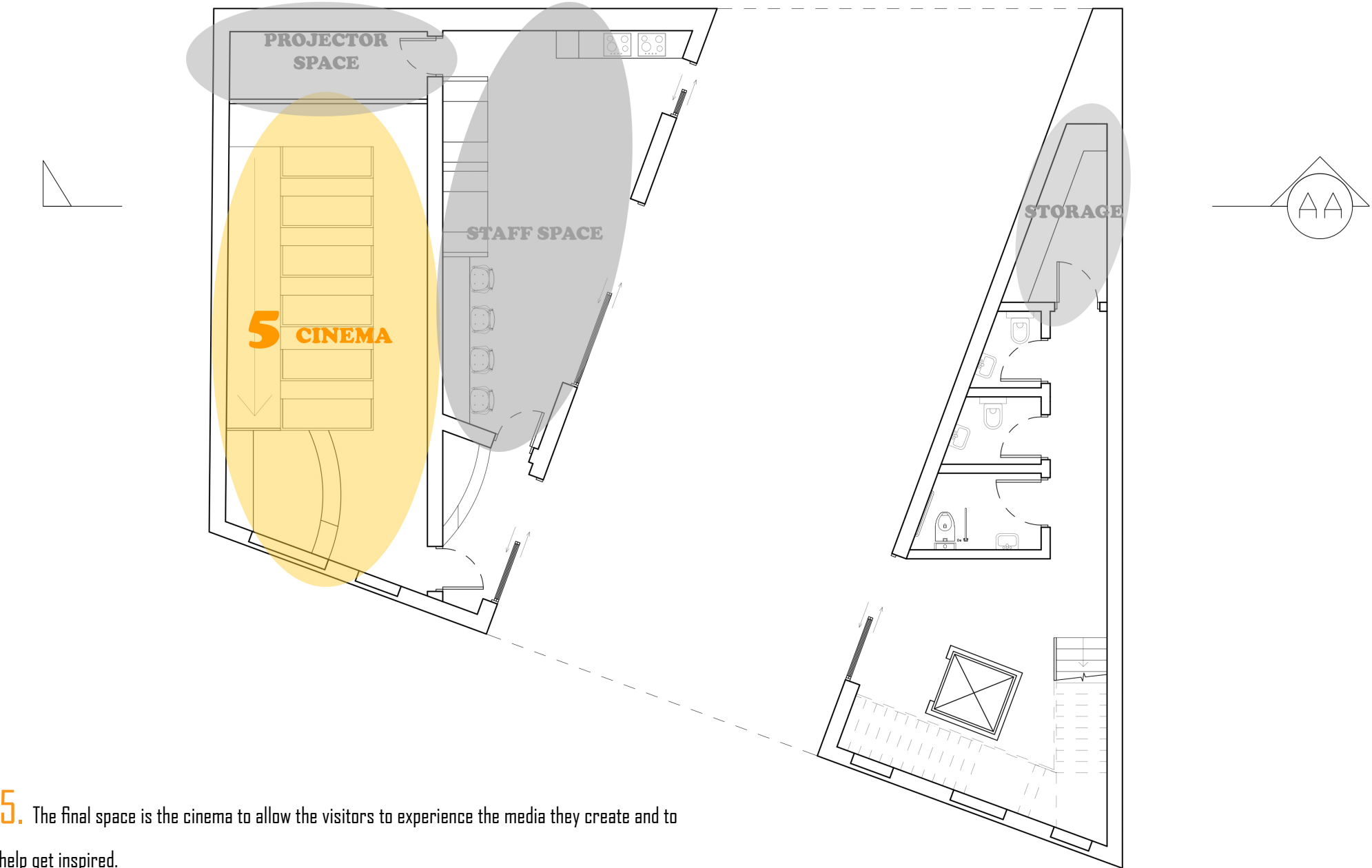
1. When they first arrive they are greeted by a place to store there coats and are then led to the script writing room which is the first stage of film production.

2. After the script writing the visitors are then led into the stage design space that is large and open with a large curving table that gives the people using the space enough room to create.

3. Next discover how the film and Tv series are filmed with the modern LED stage.

4. The final space on the ground floor is the editing space that includes computers and sound booths.

BASEMENT FLOOR



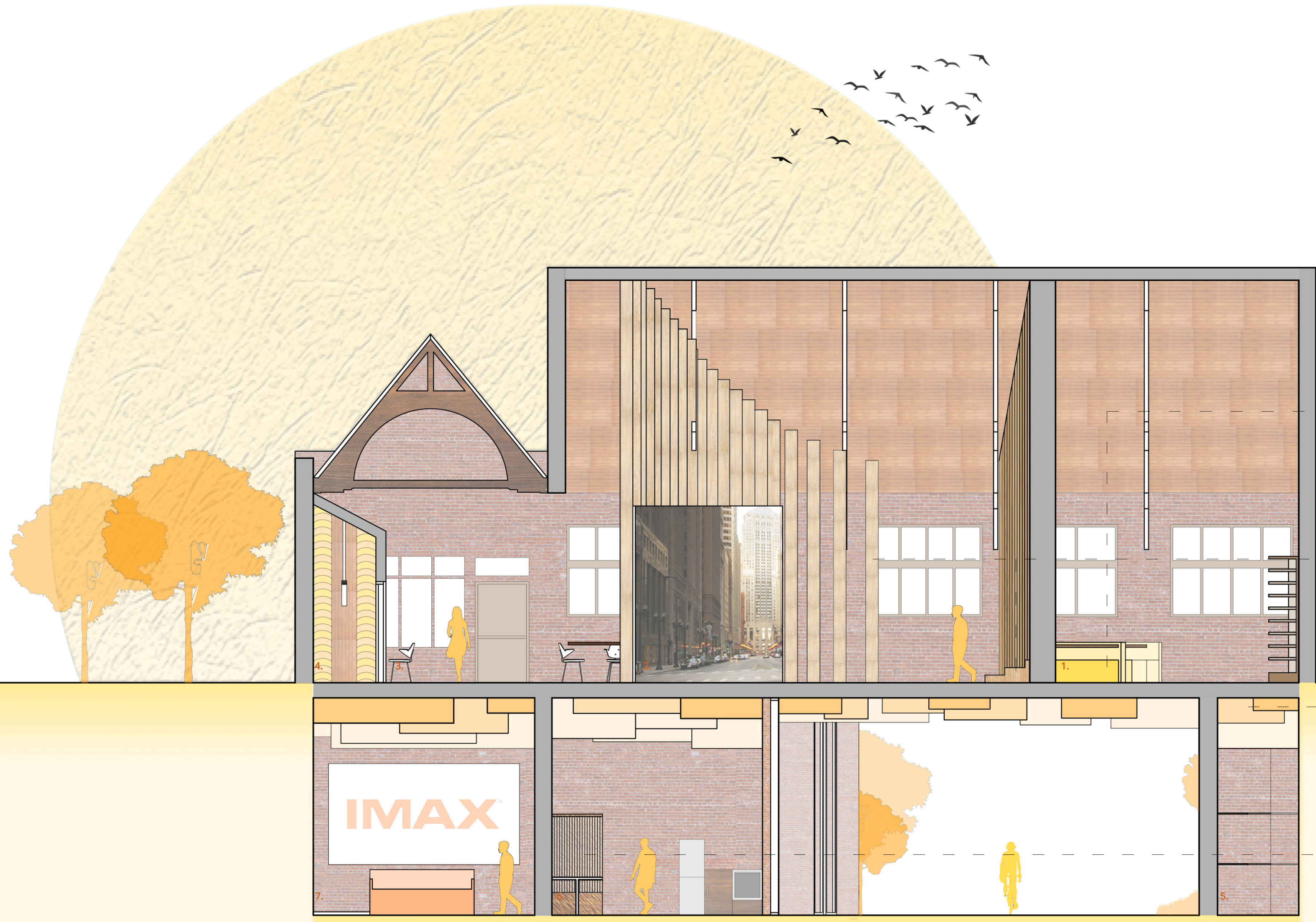
5. The final space is the cinema to allow the visitors to experience the media they create and to help get inspired.



STAGE DESIGN SPACE
THIS SPACE IS LOCATED ON THE EAST SIDE OF THE GROUND FLOOR

RENDERED SECTION

THE SECTION DEMONSTRATES THE MATERIALITY OF THE BUILDING AND SPACES



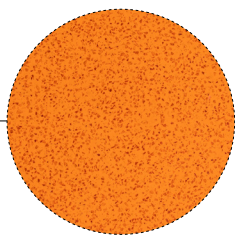
- 1. SCRIPT WRITING
- 2. STAGE SPACE
- 3. EDITING SPACE
- 4. SOUND EDITING BOOTHS
- 5. STORAGE
- 6. STAFF ROOM
- 7. CINEMA SPACE

PAPERSTONE
Paperstone is a paper composite material made from recycled paper.

LIGHT TIMBER
Light timber creates a warm and safe feeling space.

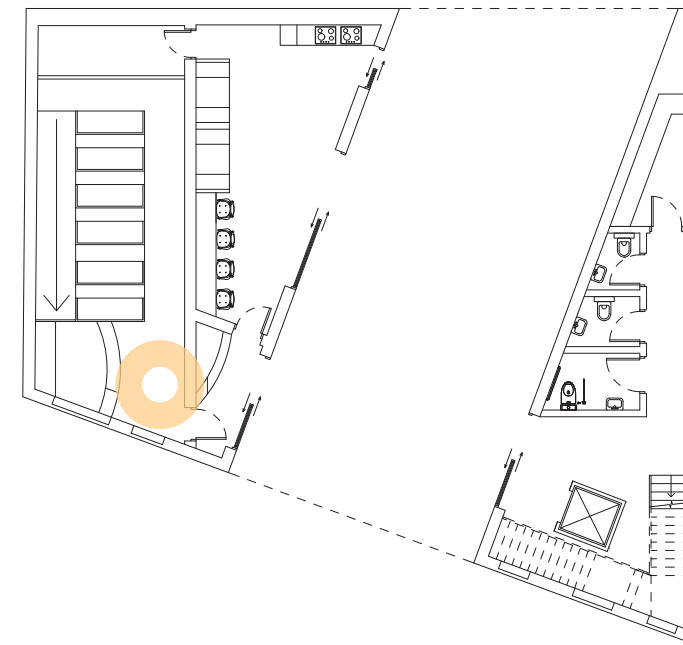
DURAT
Durat contains 30% recycled plastic and is 100% recyclable. It has a very distinctive granulated texture.

DARK TIMBER
Dark timber creates a more grounded space however still creates a safe and inviting environment.





LOCATION

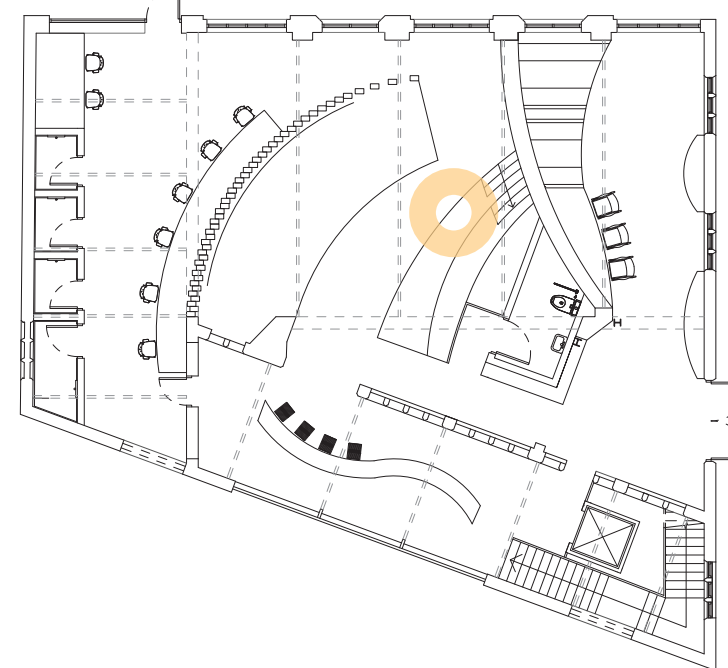


INFORMATION

This is the final space in the journey through the building where visitors can experience either their own film and TV creations or get inspired by the work of someone else. The space utilizes an exposed brick wall to ground the space in the existing history of the building as well as a new timber wall to add warmth to the space. In the theatre space there is a refreshments section for people to get food and drinks before the theatre starts being used and it is separated from the seating by both a change in elevation and glass divide. The roof space is filled with an organic form that is constructed from a semi-transparent material to create an interesting experience as visitors travel through the space. The organic form resembles unwoven film which links back to the purpose of this redesign.



LOCATION

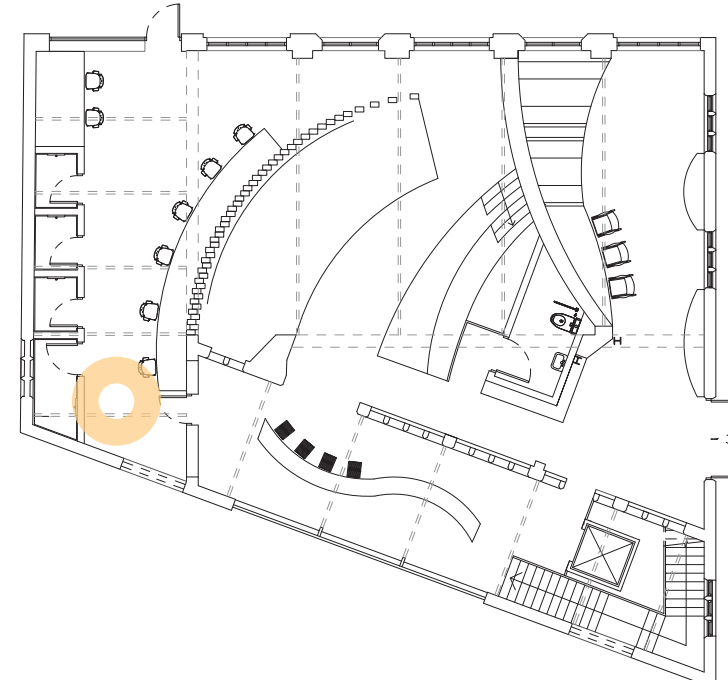


INFORMATION

This is the core space of the redesigned building and is located in the centre of the ground floor. This space is the social area where presentations and talks can be held as well as use of the large curved LED screen to create different backgrounds when acting or creating scenes for a film or TV show. The use of this space creates a feeling of community in the building as it is the core of the redesign and brings everyone together into this large space with plenty of seating and activities. I have kept the old walls of the building and steel beams exposed to help link the new design to the history of the space.



LOCATION



INFORMATION

This space is located on the south side of the ground floor interior. This is the editing suite that includes different computers to carry out visual editing classes and other activities as well as including four soundbooths which on that is bigger to accommodate wheelchair access. This means that both visual and audio editing can be carried out in this one space. The computers flow in the same direction as the curved organic wall that provides a barrier between this space and the filming/presentation space. However, there isn't a door between the two spaces because I wanted to create a more organic journey through these two areas to encourage communication and I felt that a door would have created a direct barrier.