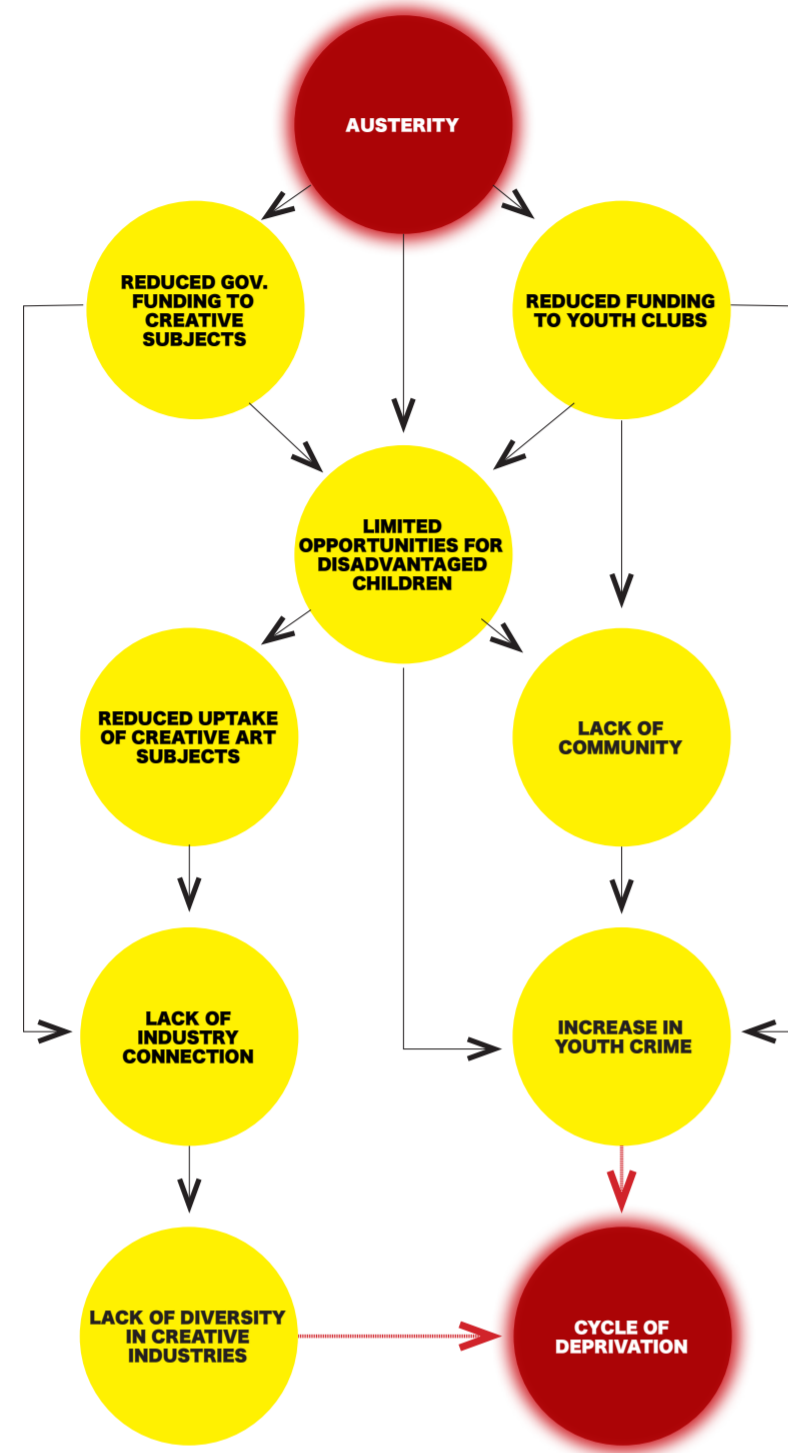


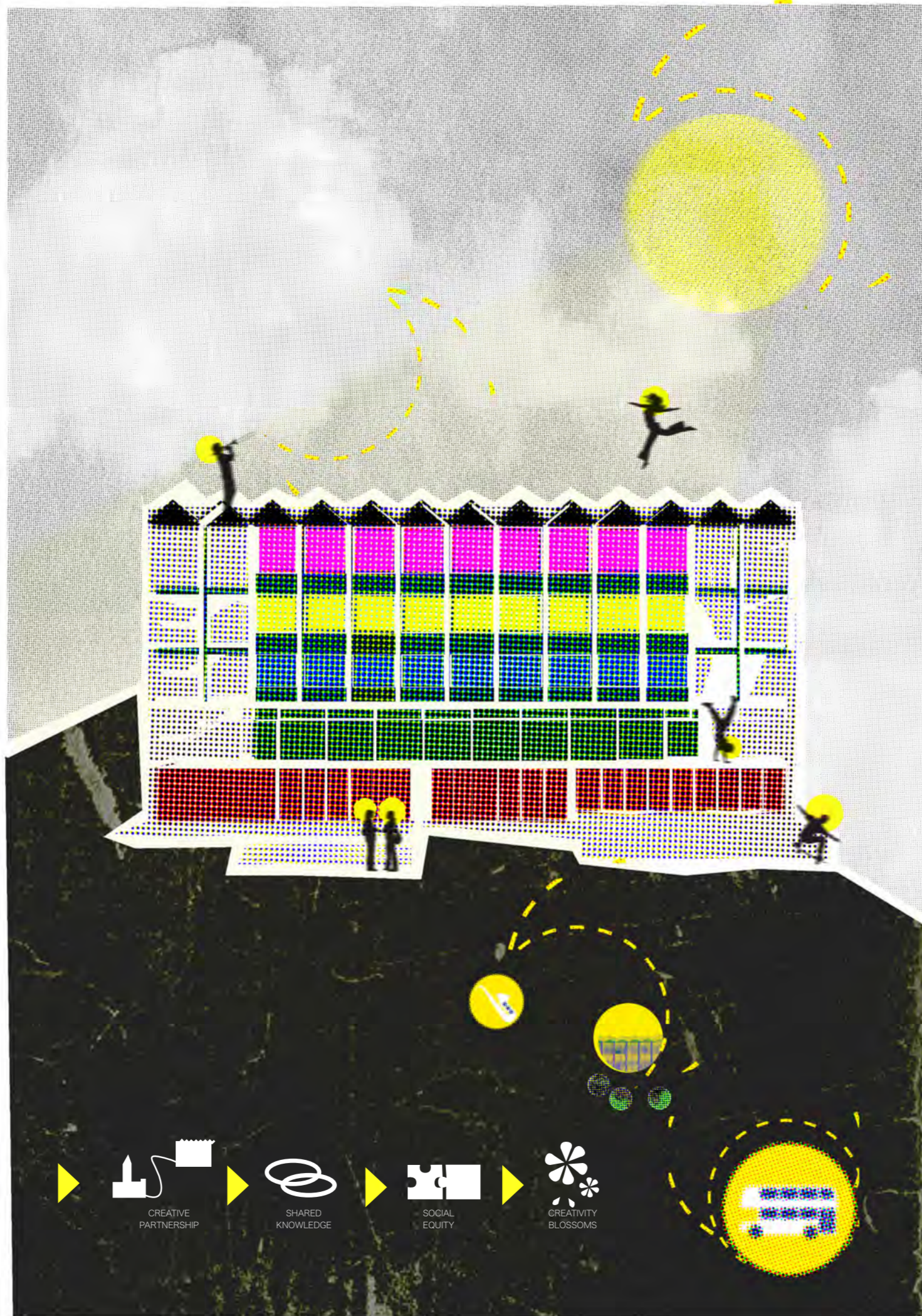
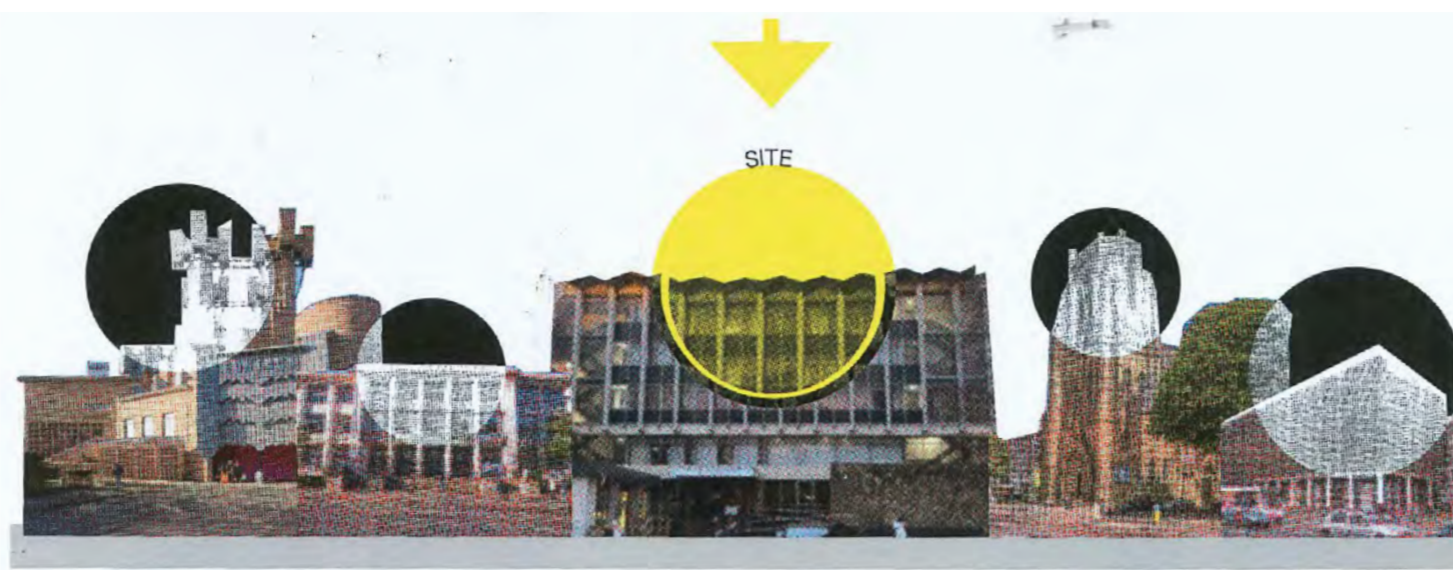
PROBLEM

The underfunding of creative education and closure of youth clubs has resulted in insufficient and unequal creative opportunities for young people from lower-income families in Manchester. Art should be accessible to everyone irrespective of background or culture, yet recent stats suggest the industry is still lacking in diversity and equity.



SITE: THE CATHOLIC CHAPLAINCY

Built in 1960 for the catholic chaplaincy, the brutalist concrete building was designed by Mather and Nutter and features a unique saw-tooth roof raised by detached piers that frame the top 3 storeys. The Chaplaincy is located on Oxord Road, at the heart of Manchester's Academic and creative universities, opposite the Student Union and next door to Holy Name Church.



PROPOSAL



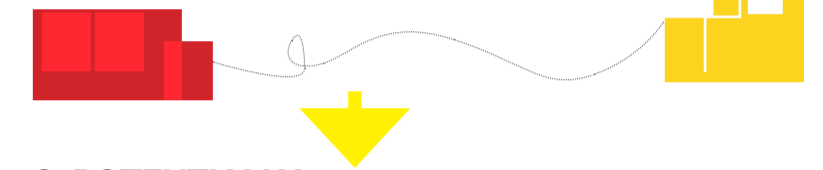
'Third' is a grassroots youth space in Manchester that fosters creative talent through art, film, music and performance, reinforcing social equity and community connections. Third offers a unique approach to youth engagement, by linking local university students with local youth at pivotal life stages, young people are given agency over the space. Students become mentors, and local youth become students.

Through Third, the Chaplaincy transforms into a hub that bridges students with the local community, nurturing working-class talent at the heart of Manchester's creative scene. The journey begins at the nearby bus stop, a place to advertise events and activities, whilst each floor provides a unique creative experience, opening up to gigs, film screenings and exhibitions. Inspired by Manchester's youth scene in the 80s, Third reflects an evolving, energetic culture that champions equal creative opportunities for all young people.

The site sits conveniently within a hub of creative university and academic sites including the Contact Theatre, the School of Art, the Union and SODA allowing close connections with creative and academic students and tutors who can volunteer, hold workshops and build mentor-ships.

1. TYPICALLY

No crossover or connection between local young people and University Students. Many students come from outside of Manchester and so are detached from the local area.



2. POTENTIALLY

University students could share their talent and knowledge of their subject with local young people interested in the arts.



3. IDEALLY

This partnership enables paths to cross between students and local youth at different pivotal stages in their lives, building a community that fosters social equity and equal opportunity.

The Arts Industry

Children from the **poorest backgrounds** are **3x** less likely than pupils from wealthier families to learn a musical instrument, sing in a choir or play in a school orchestra.

In 2021 the UK government cut art subject funding by **50%**.

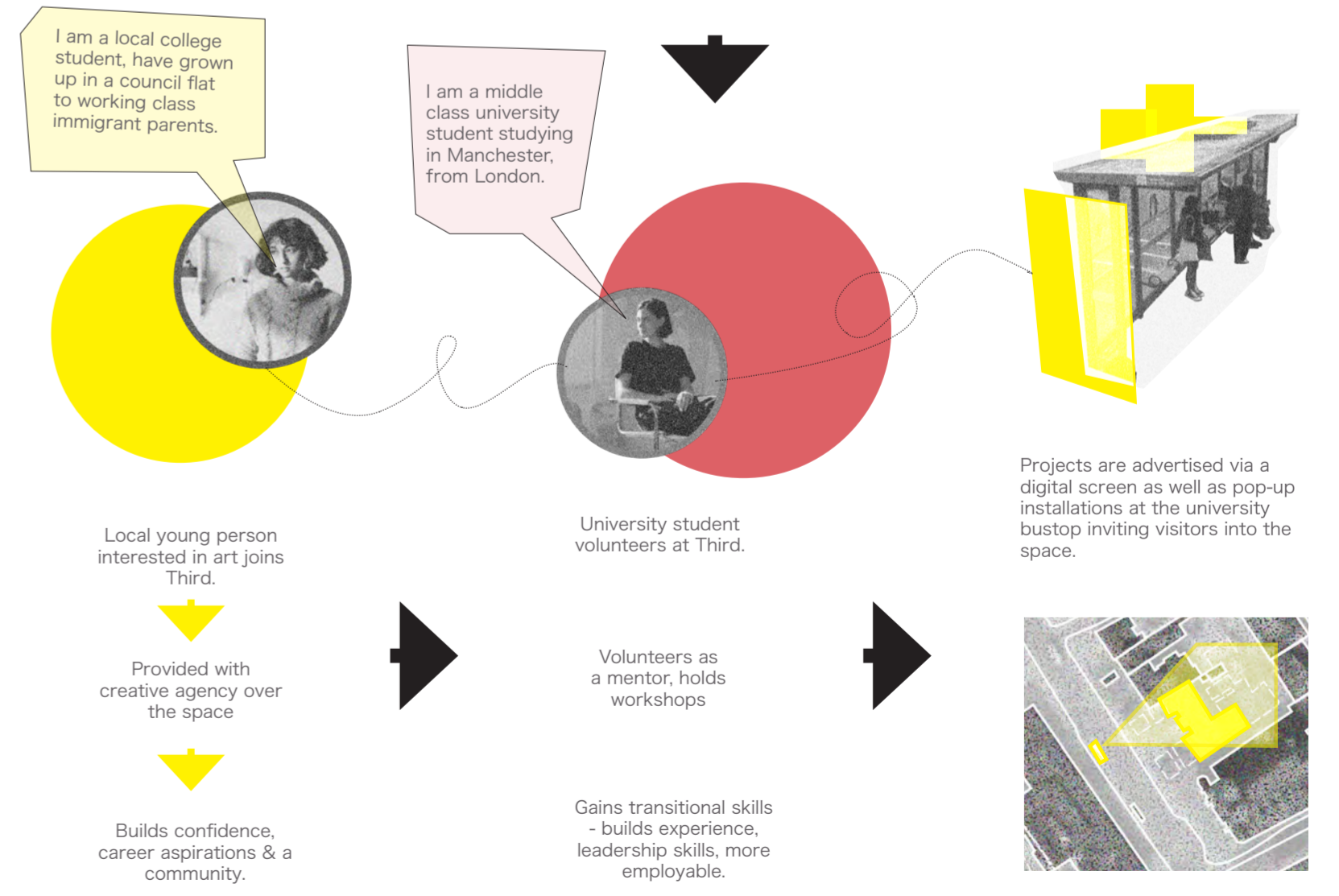
Only **7.9%** of UK artists come from a working class background. The numbers of working-class actors, musicians and writers has **halved** since the 1970s.

Youth Facilities

Overall spending on youth services in England has fallen by **£1 billion (62%)** in the last decade.

83% of youth workers say the cuts have had an effect on crime and anti-social behaviour.

1 in 4 youth centres under the threat of closure.



SOCIAL CONTEXT

THE CLOSURE OF MANCHESTER'S YOUTH CLUBS.



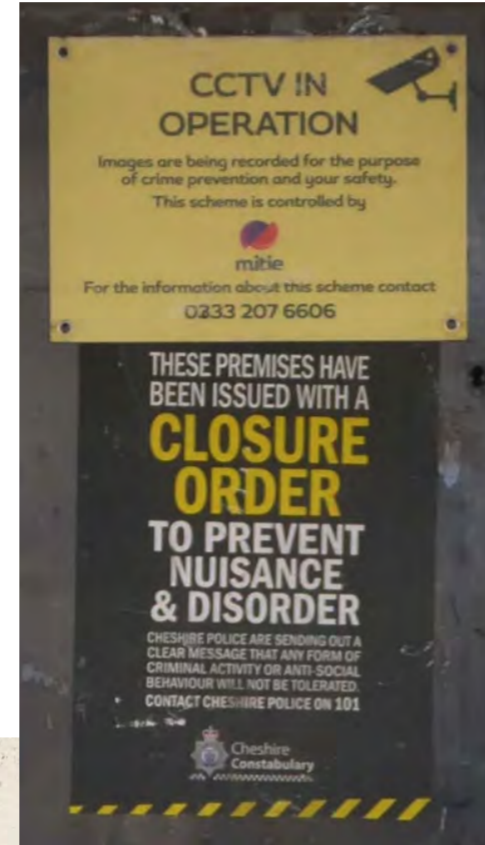
Ancoats Youth Club 1962

'I remember Ancoats Lads Club as a thriving centre of activity during the mid 50s to the late 60s. Gymnastics, boxing, football, boys netball and basketball, billiards and snooker and a range of other activities such as Summer Camps, kept hundreds of boys engaged for many, many years.'



...became a bed shop. Then Demolished in 2011

Everyone is one.



Ardwick Lads Club 1980

The Ardwick Lads' and Mens' Club on Palmerston Street, formerly the Ardwick Youth Centre, opened in 1897 and is believed to be Britain's oldest purpose-built youth club still in use and was until earlier in 2012.

On the 10th September 2012 Manchester City Council cited that there was 'no use' for the building in respect of its historic place. It was demolished, with no regard to its historic and community value.



Sometimes we dance



A place to breath



45% OF CHILDREN IN MANCHESTER LIVING IN POVERTY

Comments from Mancunians - how the arts impacted them as working class kids in the 80s.

'A group of actor musicians came to school and we had to react to Hall of the Mountain King from The Peer Gynt suite by Grieg. I loved the sound but had no idea how it was possibly made and it wasn't for the likes of us to speculate - unless you had a parent who knew classical music. We all ran around the hall and danced and twirled as goblins, sprites and all manner of things, it was glorious, I can still remember feeling free and uplifted by it. I knew I wanted to dive into that sound world.'

'That spark of interest and enthusiasm, the joy it brought and the feeling of 'I'm part of this exciting new world' was, and remains, so important to kids from all backgrounds and cultures.'

Moss Side Youth Club 1972



760 UK YOUTH CENTRES CLOSED SINCE 2010



Hideaway Youth Project is the longest running youth club in Manchester, first opening its doors in 1965, it provided a creative arts hub for young locals.

From the riots in 1981 to the nick-named 'Gunchester' era of the 90s - The Hideaway Youth Project has remained a fixed safe-space for young people in need of an escape.

UK YOUTH SERVICES CUT BY 1 BILLION



Procter Youth Centre 1966-2011

Procter provided a broad range of activities such as pool, football and martial arts. In 2009 it was refurbished with £668,000 being spent on a weights room, dance studio, recording studio. Then two years later Manchester City Council closed it down.



Scan to explore more history and photos of Manchester's youth clubs.

- CORK CLADDING**
Cork clads the exterior of the Concertina. It is an insulating, acoustic material, perfect for spaces that require added insulation.
- CORTEN STEEL**
Corten Steel, used on the entrance ramp and patio, is ideal for exterior spaces, rated for its longevity and self-protective capabilities.
- MINT GALVANISED STEEL**
Green steel is used on the window frames and entrance, adding a pop of bright colour to the space.

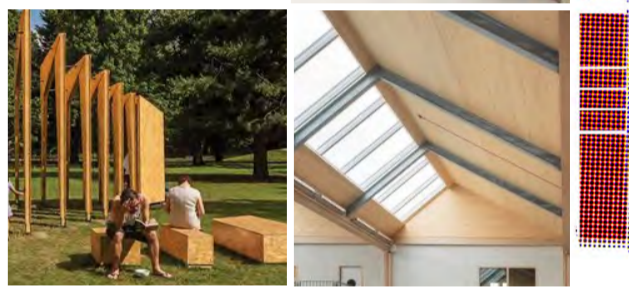
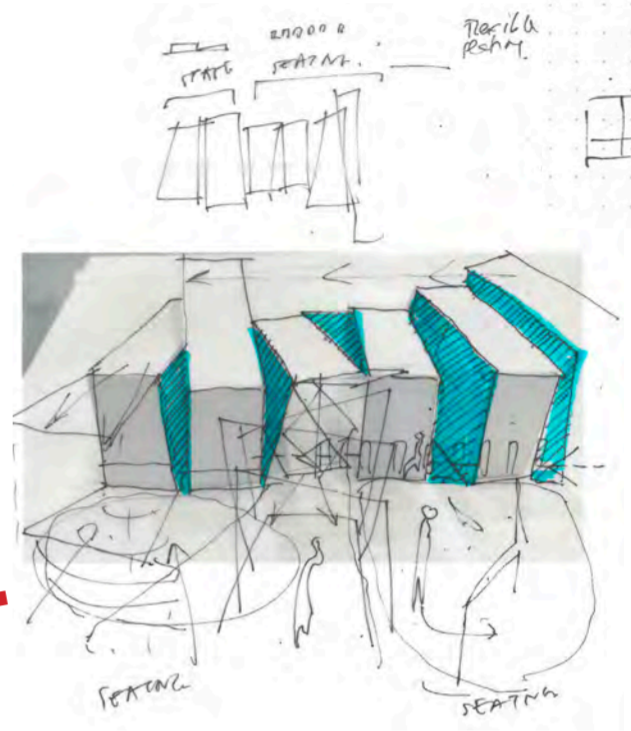
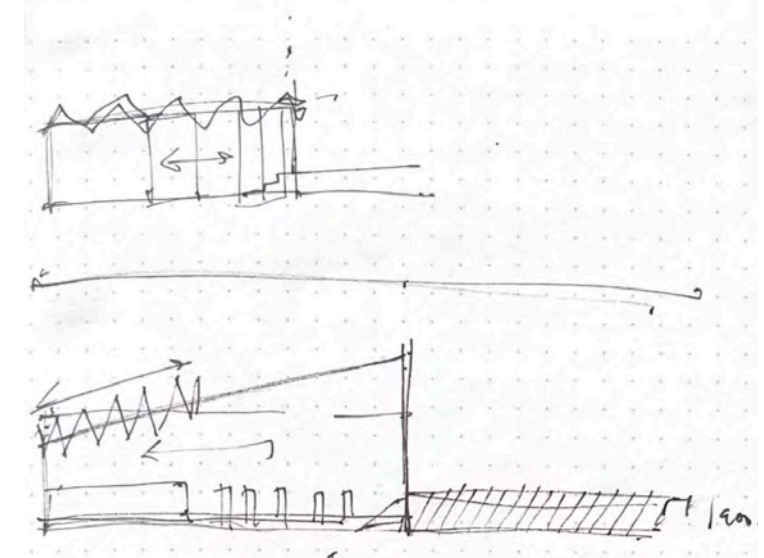
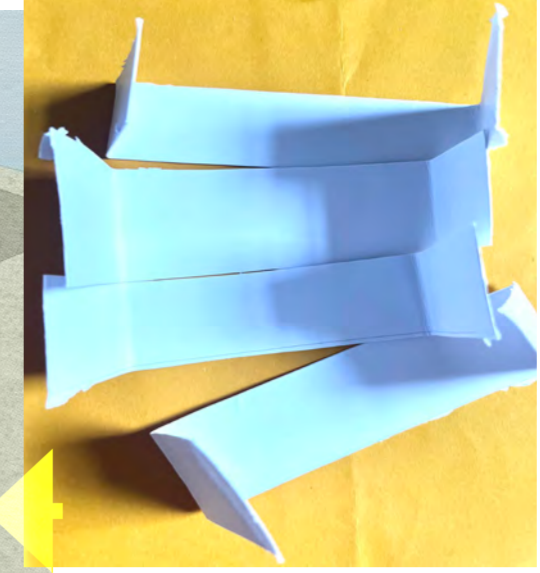


THE CONCERTINA

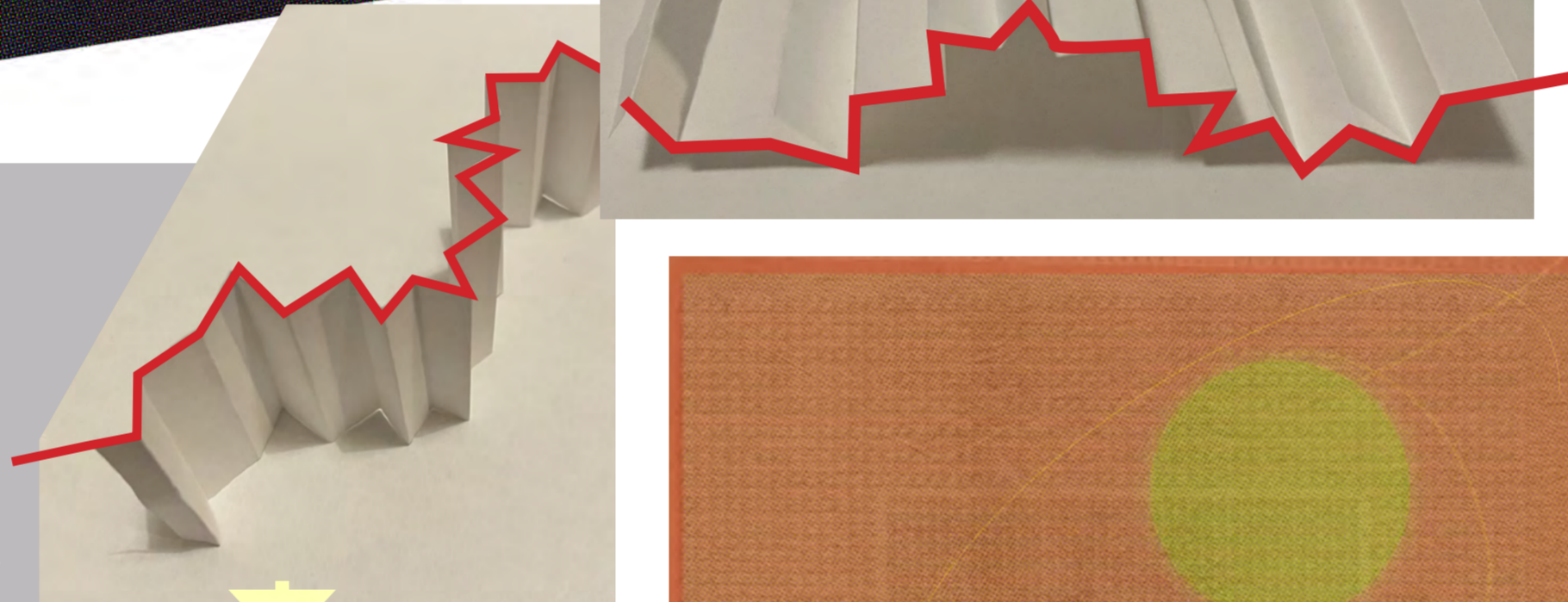
Section BB



View inside the Concertina



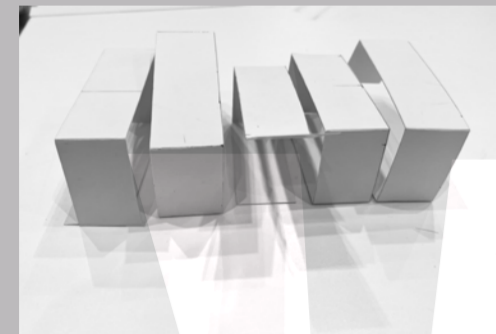
CONCERTINA BENCHMARKS



CONCERTINA

The design of the building follows an initial thought that the roof of the Chaplaincy looks like a concertina - an instrument that plays through expanding and collapsing folds. This idea of folding and collapsing structures will echo through the design of the space, as the building becomes a dynamic fixture that can be reassembled and altered for varied occasions.

The 'Concertina' will be one of the key features of the building. An extension of the space that opens up like a concertina, featuring a main stage and opening into the garden, host to live music, theatre and dance.



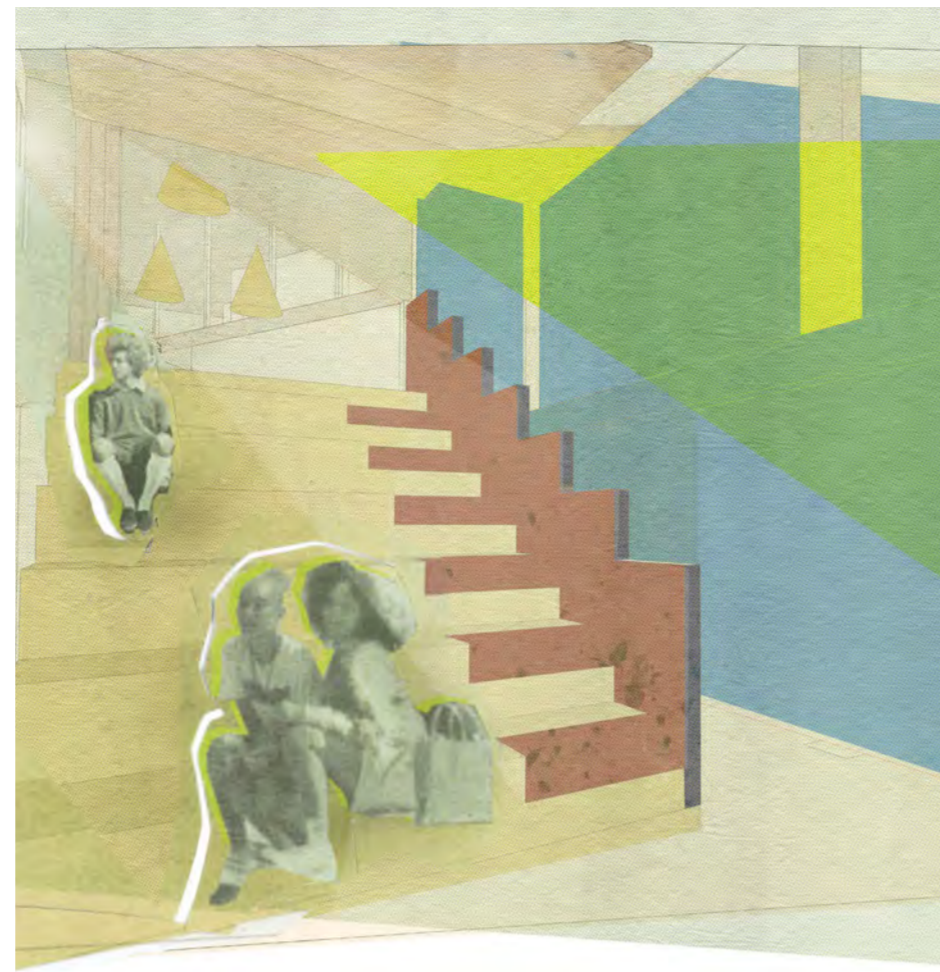
The Concertina is a free-reed musical instrument played by contracting and expanding bellows, with buttons on both ends which sound the notes. The structure expands, extends and collapses into folds.



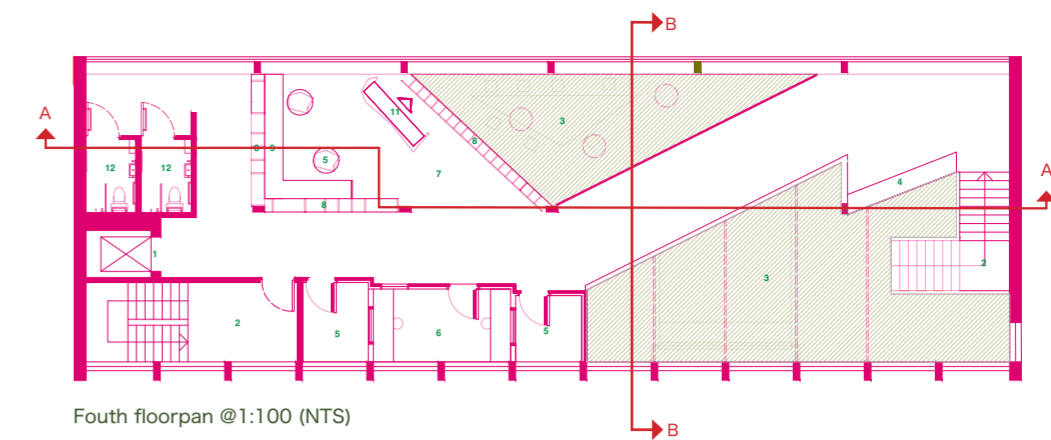
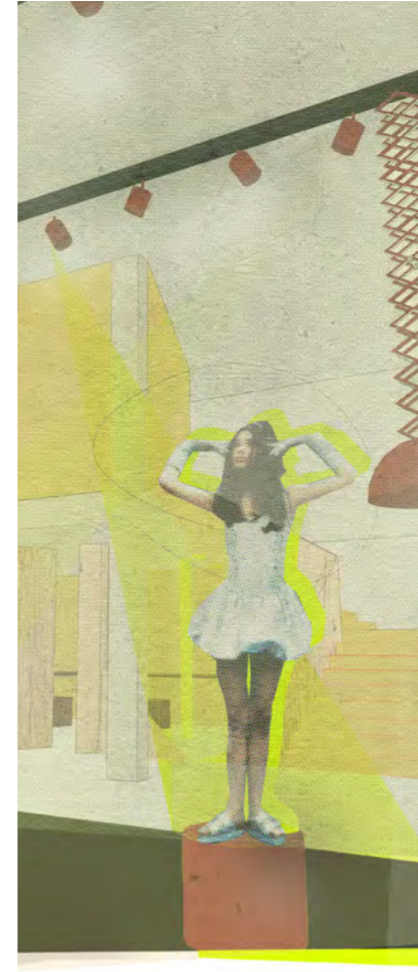
Exterior view of Concertina



Ground floor: the foyer serves as more of an 'undefined space' it features an open plan bespoke bar/kitchen area, a flexible gallery wall that opens up as a partition of the space and the Concertina.

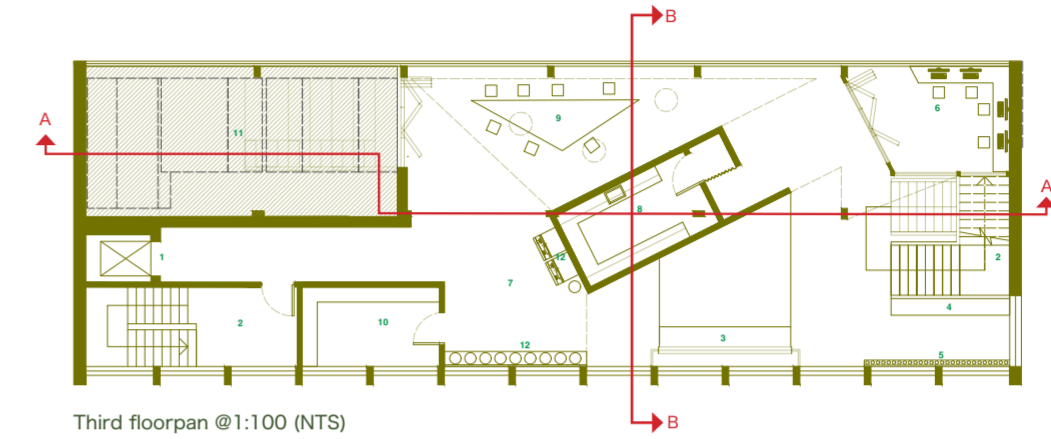


The Film Stop: The viewing room cuts through the second and third floors, featuring recycled timber bleachers and a suspended acoustic ceiling. The third floor open up into the fourth through two triangular voids. This floor features a bespoke green screen, a dark photography room and a collaboration station.



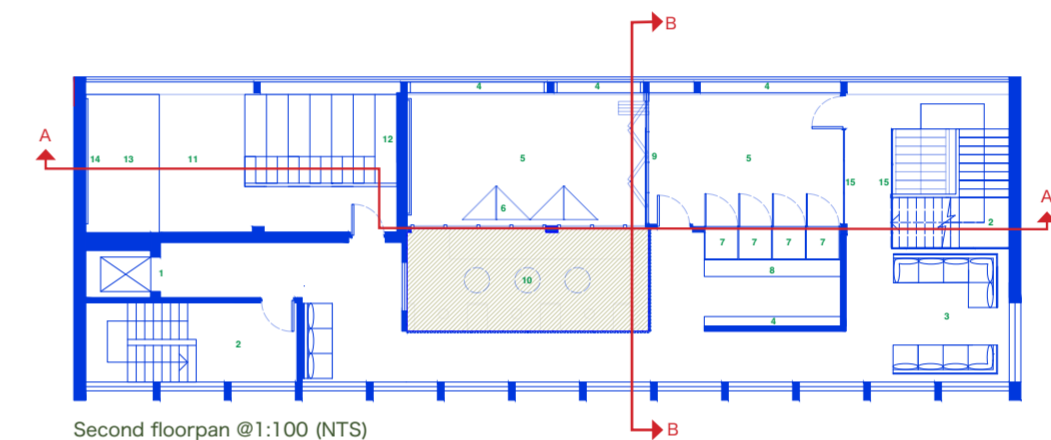
Fourth floorpan @1:100 (NTS)

- KEY:
- Lift
 - Stairs
 - Void
 - Instrument Locker
 - Recording Pod
 - Production Suite
 - Listening Bar
 - Bespoke partition shelving
 - Seating
 - Tables
 - DJ Stand
 - Accessible Toilets



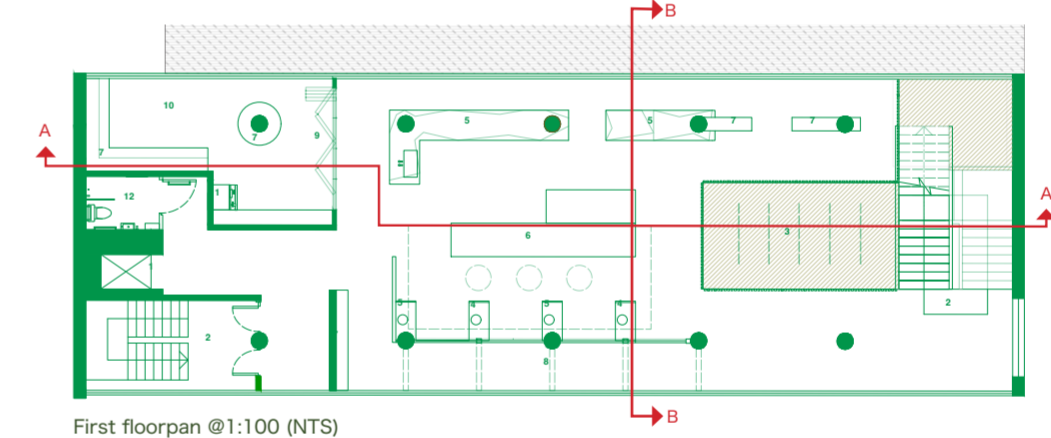
Third floorpan @1:100 (NTS)

- KEY:
- Lift
 - The set backdrop
 - Set storage
 - Backdrop rolls
 - Editors suite
 - Printing space
 - The dark room
 - Collab table
 - Equipment cupboard
 - The Viewing Room
 - Seating



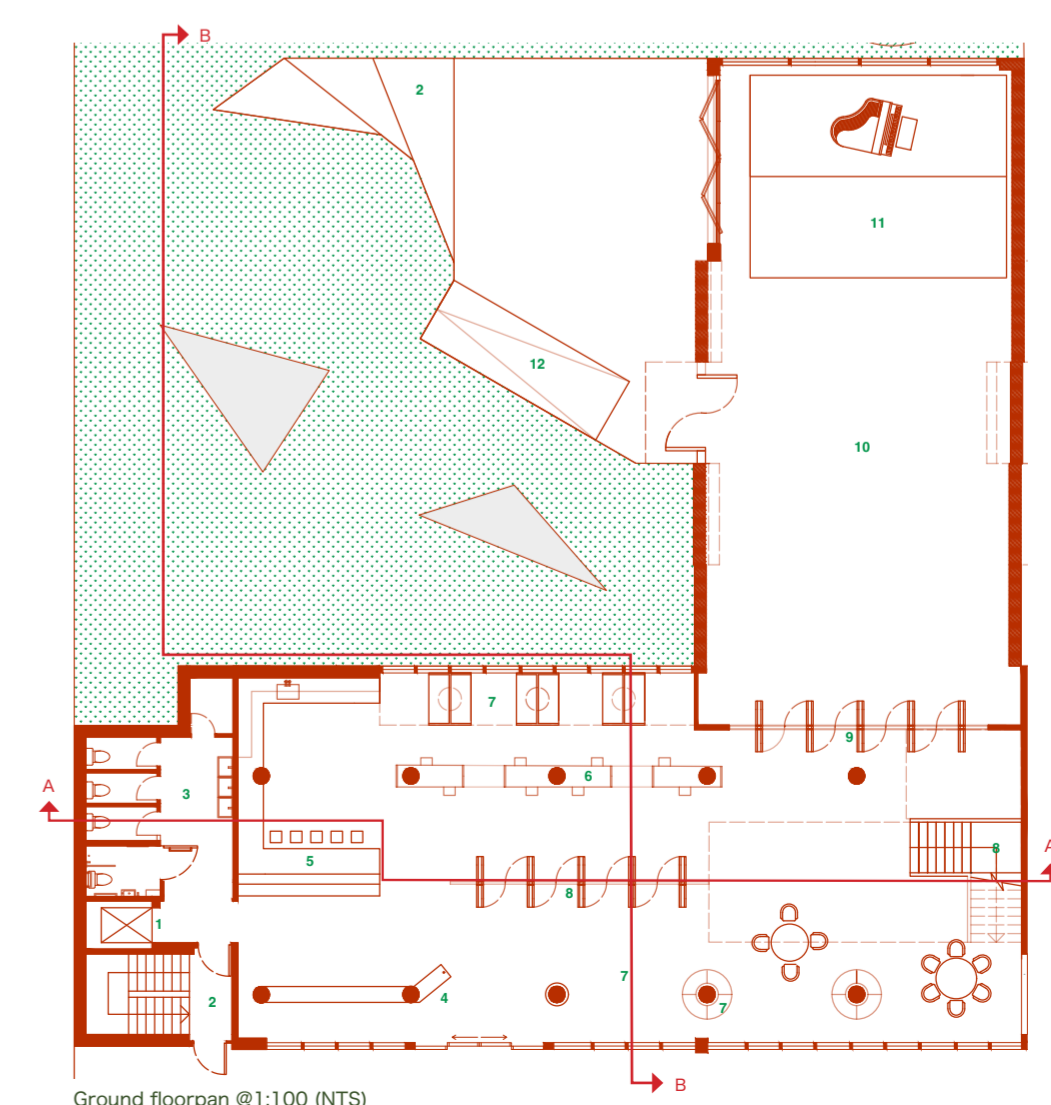
Second floorpan @1:100 (NTS)

- KEY:
- Lift
 - Stairs
 - Hangout space
 - Bench seating
 - Dance studio
 - Flex dance set
 - Changing rooms
 - Lockers
 - Folding doors
 - Lighting Void
 - The Viewing Room
 - Bleacher seating
 - Stage
 - Screen
 - Glazed Partition



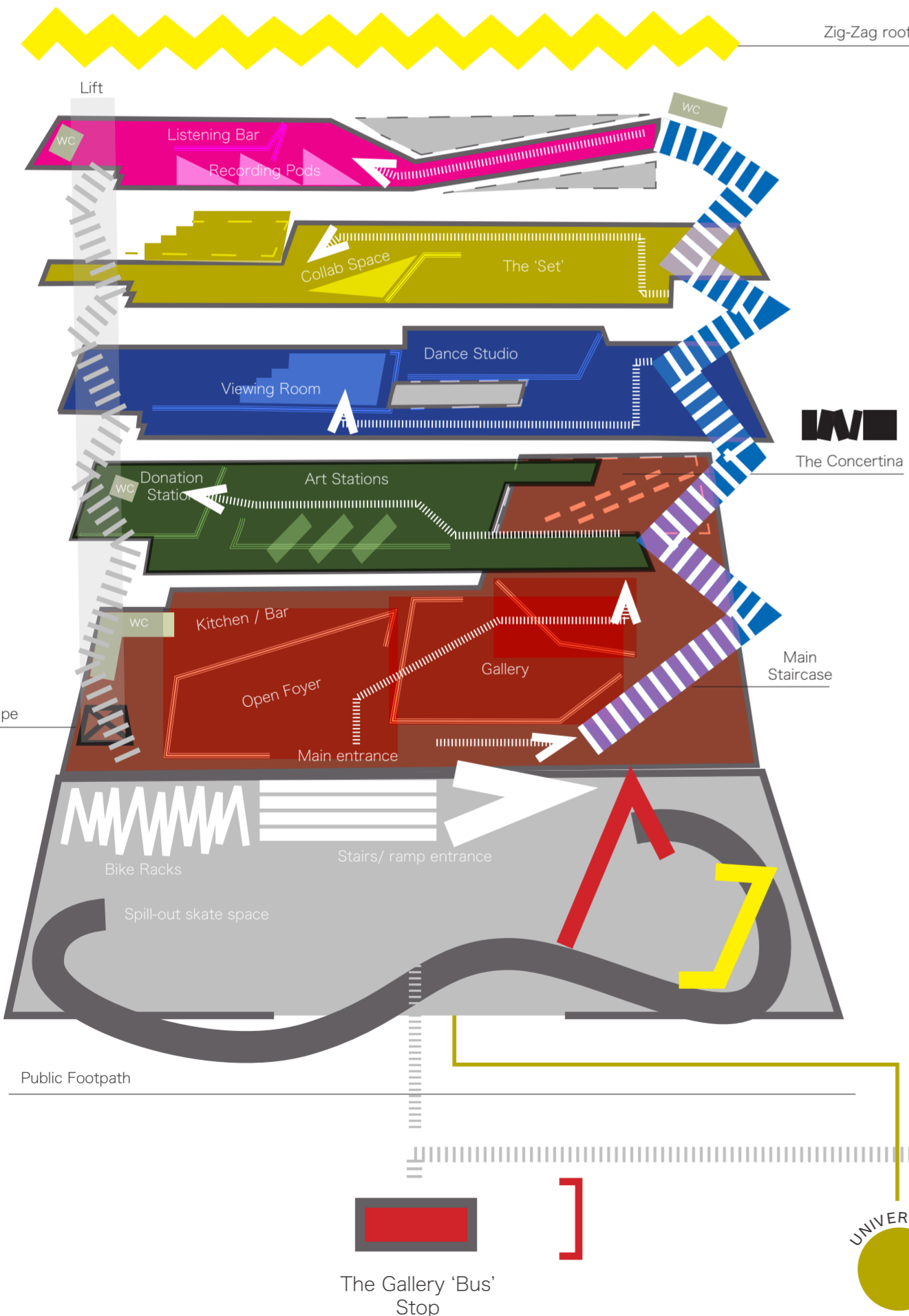
First floorpan @1:100 (NTS)

- KEY:
- Lift
 - Stairs
 - Void
 - Bespoke Fold up workspaces
 - Workspaces
 - Central folding table
 - Bespoke fitted shelving
 - Suspended drying / hanging rack
 - Concertina doors
 - Donation Station supply cupboard
 - Printer
 - Accessible toilets



Ground floorpan @1:100 (NTS)

- KEY:
- Lift
 - Stairs
 - Toilets
 - Reception
 - Kitchen bar
 - Column worktables
 - Seating
 - Flex gallery display wall
 - Flex sound proofing doors
 - Concertina Venue Space
 - Pull-out Stage
 - Ramp
 - Exterior recycled stone seating
 - Bike racks
 - Skating seating slabs
 - Recycled stone stools



Music Stop

- Recording Pods
- Listening Bar
- Instrument Hub
- WCs

Film Stop

- The 'Set' - a flexible open space for green screen / film set
- Access to Viewing room

Dance Stop

- Open studio for performance art
- Public Access to cosy viewing/ cinema room

Art Stop

- Flexible art stations
- Craft Stations
- Donation station - donations from the university's and students

Gallery / Concertina

- Open Foyer
- Gallery
- Concertina stage
- Bar / kitchen
- WCs

Back Garden

Front Garden

- Spill-out skate space
- Bike rack
- Outdoor dwell space - seating / canopy / swings / shelter
- Stairs & ramp entrance

PROTAGONIST/

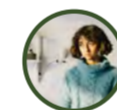
Primary user : The creative local youth - 12-15 / 15-18 year old & University Students

Secondary user : Volunteers & Visitors



The Mentor :

Iris is doing at Masters at the University of Manchester in Playwriting. She holds theatre workshops at the youth club, setting the scene for aspiring actors and performers on directing and writing plays.



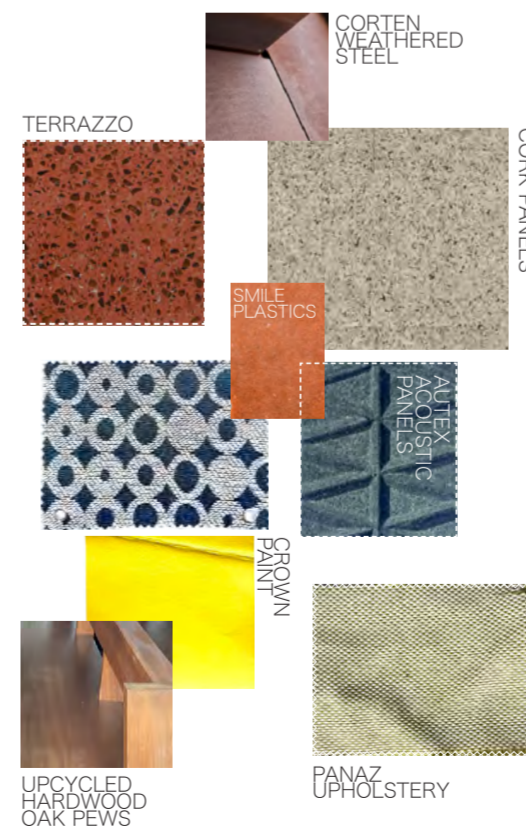
The Prodigy :

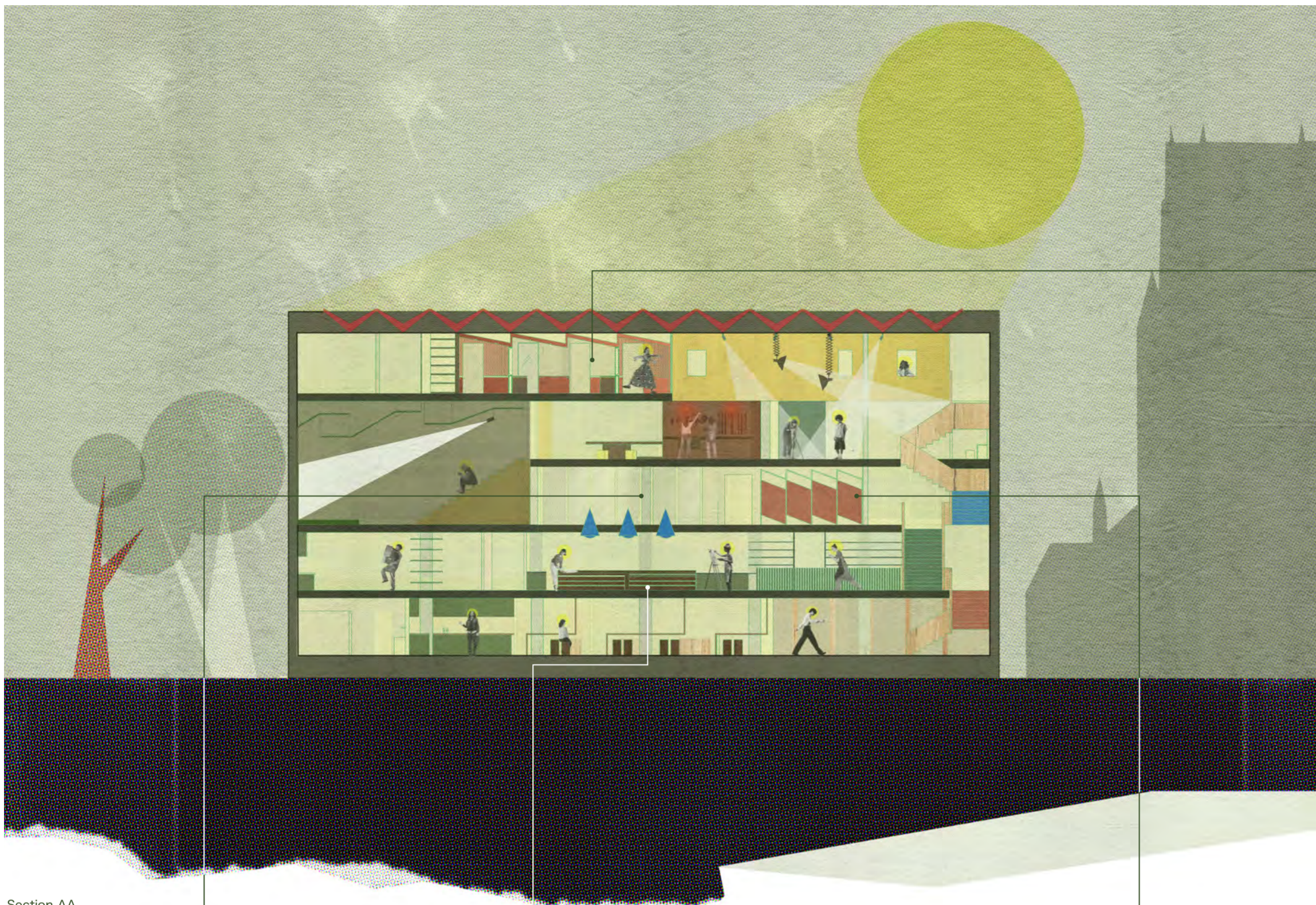
Mia, 13, is a talented artist from the local girls school. Both her parents migrated to Manchester in the 2000s. Third has become a respite from her home life. She can socialise with her friends in a creative, inclusive environment.



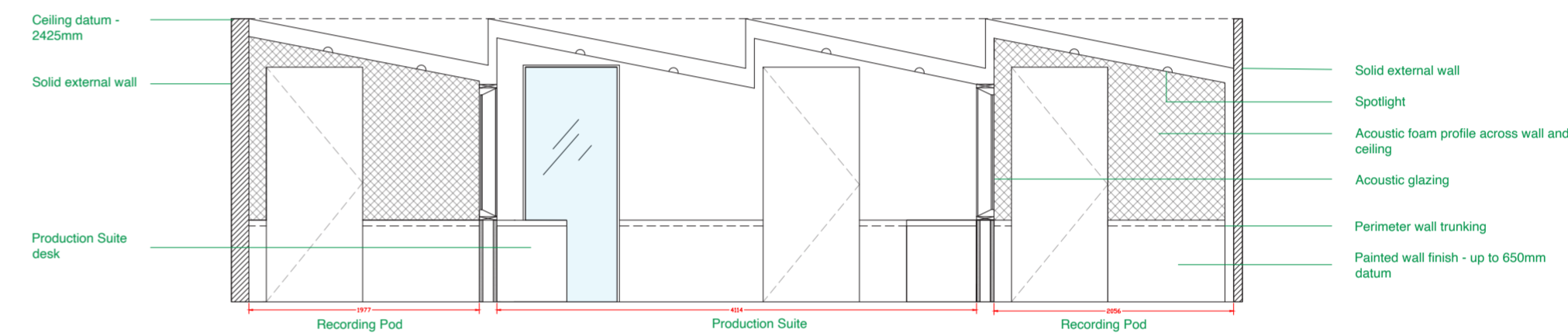
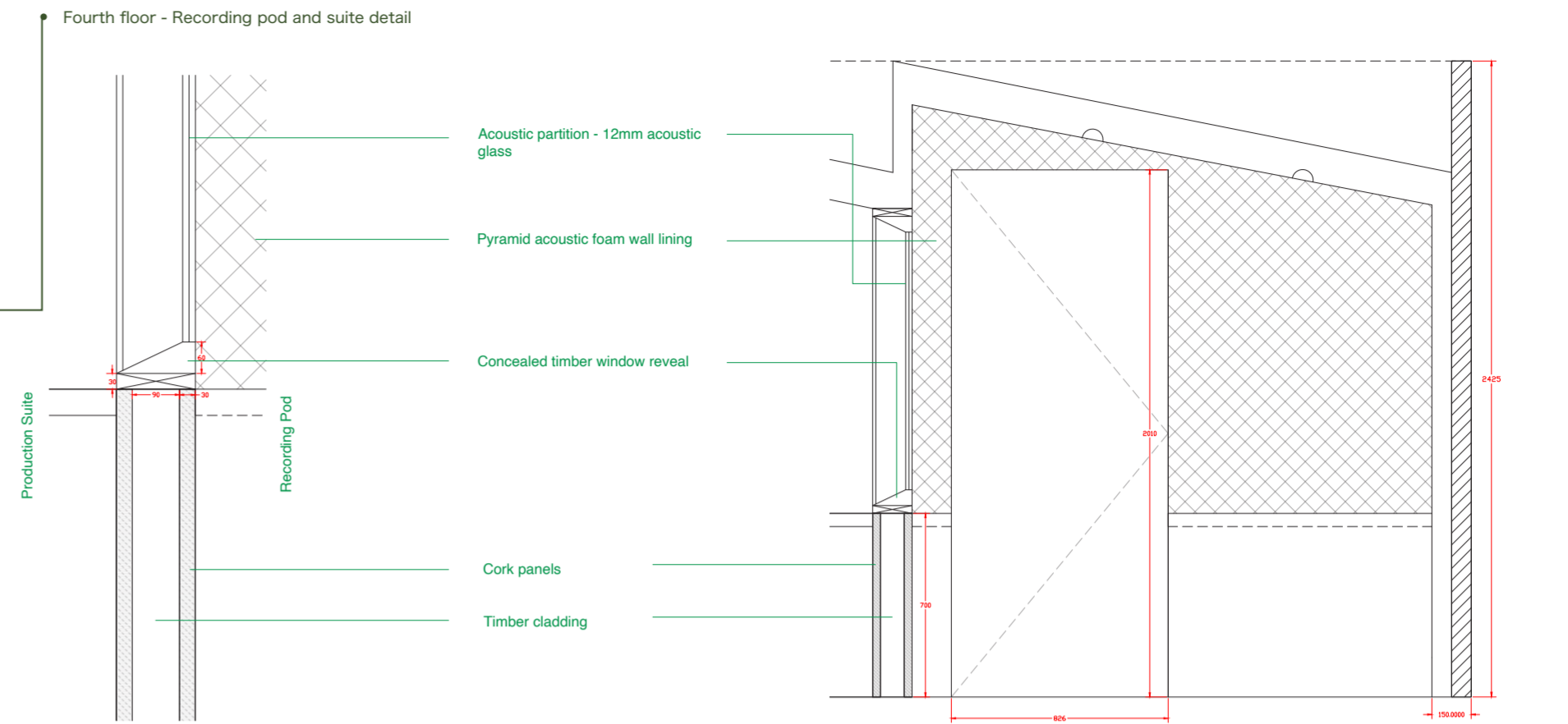
The Outsider :

(Dr.) Anna is a Professor of Medical Education. She teaches students in the Stopford Building and regularly commutes from the bus opposite the Chaplaincy. Having seen an ad that caught her attention at the bus stop for a play at the Chaplaincy, she has brought her and her wife a ticket.





Section AA



Third floor void

Flexible workshop

Dance studio changing rooms



ART STOP

The Art Stop is designed to be as flexible as possible. The central worktop opens up, as well as bespoke fold-up tables that can be pushed into the wall. The void looks down to the ground floor - a temporary space to showcase art.



DANCE STOP

The dance stop features two dance studios that can be conjoined with folding doors in the middle. The space has large geometric lighting above, unique zigzag changing rooms and a hang-out zone.



MUSIC STOP

The Music Stop opens up the floor to young musicians. This floor features recording studios, a musical locker with instruments to hire and a listening bar that can be opened up for events and socials.