

RESEARCH IS INCREASINGLY CLEAR THAT STABLE, AFFORDABLE HOUSING IS A CRITICAL DRIVER OF POSITIVE OUTCOMES IN MANY AREAS OF LIFE, BUT SUCH HOUSING IS MUCH LESS ASSURED FOR THE LGBTQ+ COMMUNITY. COMMUNITY.

kiln

JAKE CAMERON

what is kiln?

Kiln is an inclusive, rent stabilized and ceramics led initiative providing transitional housing for displaced LGBTQ+ youth. Kiln works collaboratively with The Men's Room and AKT, aiming to break the cycle of poverty and housing instability for the LGBTQ+ community.

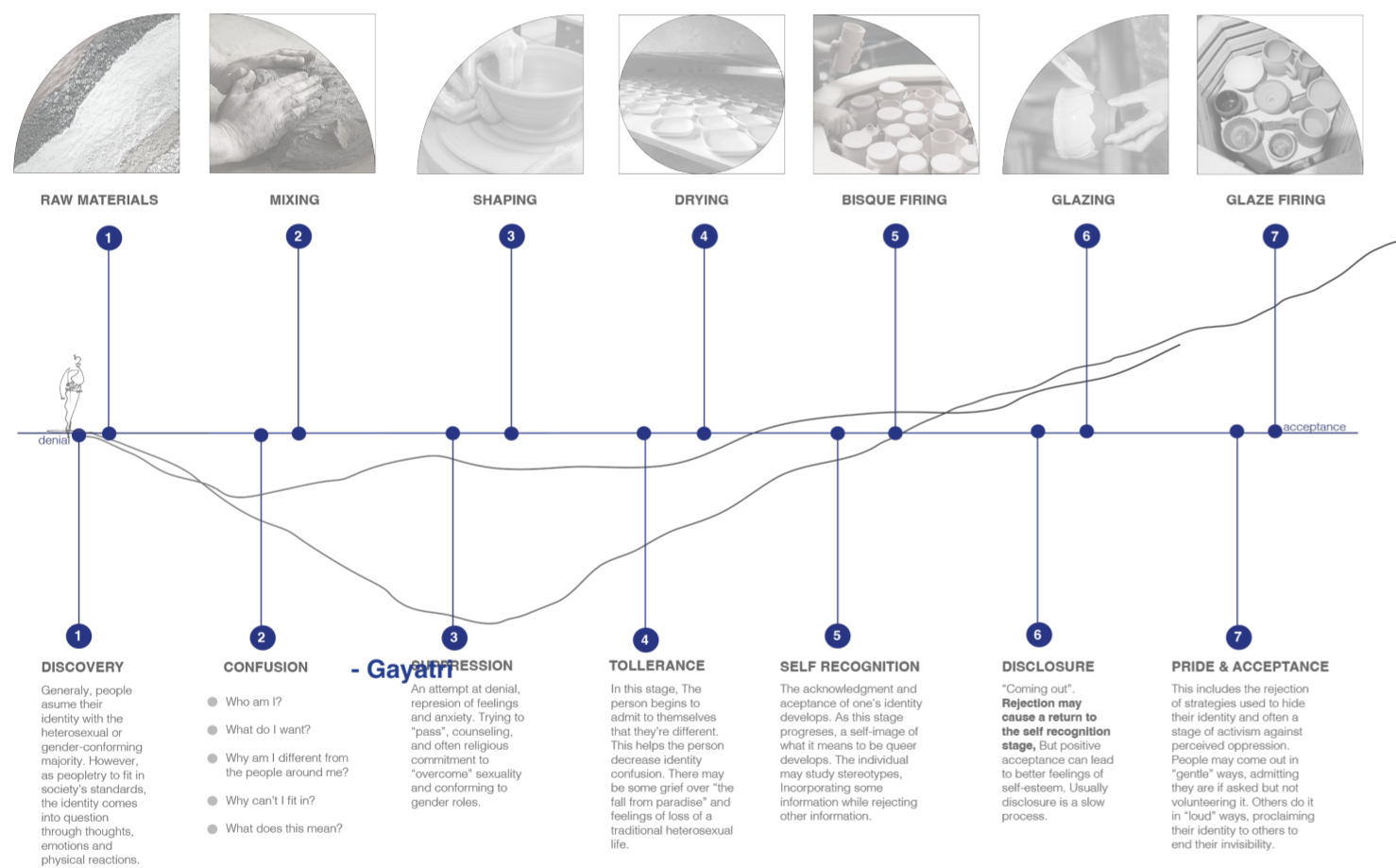
The collaboration is aimed to educate, house and uplift members of this marginalized community, using ceramics as a form of self expression. Kiln is designed as a **model scheme** to initiate continuous improvement and development of necessary housing for some of the most vulnerable within our society. Kiln provides 11 accessible housing units, supported and ran by experienced charity workers.

Visual embodying the protagonist's journey to kiln, The weather representing the prejudice faced.



- The removal of hat and gloves representing a transition in temperature and in life

The process of coming out embodied in the process of ceramics



The metaphorical journey to kiln

Homelessness services for LGBTQ+ people know there is a serious problem with domestic and family abuse leading to people losing and forced out of their homes, but governments in UK are failing to collect data that could lead to better services.

When LGBTQ+ youth feel as though they don't fit in, based on their identity, They are drawn to "beacon cities" like Brighton, London or Manchester, with the idea that it could be where they belong due to their established LGBTQ+ communities.

The problem is that there's a perception it's going to be better to be LGBTQ+ and homeless in those regions, because of the LGBTQ+ communities already there. But people travelling there for that reason don't have local connections, and the reality of that is without a local connection

LONDON, MANCHESTER AND BRIGHTON ARE 'BEACON CITIES' FOR THE LGBTQ+ COMMUNITY.

Rough sleeping

Rough sleeping on the streets can be particularly dangerous for members of the LGBTQ+ community. Offences against gay and lesbian people has doubled since 2014, and trebled against trans people. In terms of homelessness, The Albert Kennedy Trust found that LGBTQ+ youths are significantly more likely to experience targeted violence, sexual exploitation, substance misuse, and physical and mental health problems than any other homeless youth. There can be high levels of transactional sex and the exploitation of vulnerable, gay men – it's similar to the situations some homeless women may find themselves in.

Research shows LGBTQ+ young people are more likely to find themselves homeless than their non-LGBTQ+ peers. Only 3% of the UK population identify as LGBTQ+, but make up around 24% of the young

Why it is important

Gayatri is a trans woman who has facing homelessness on the streets of, originally from London but arriving up north, looking for a "cheaper" place to establish themselves based on Manchesters established queer community. Gayatri was forced out of their family home after coming out. Five months on, after seeing Gayatri on three seperate occasions, adequate safe housing is still not available. They explained how it is required for them to be homeless for 6 months to be considered for any help which means Gayatri has had no option to physically de-transition, effecting their mental health

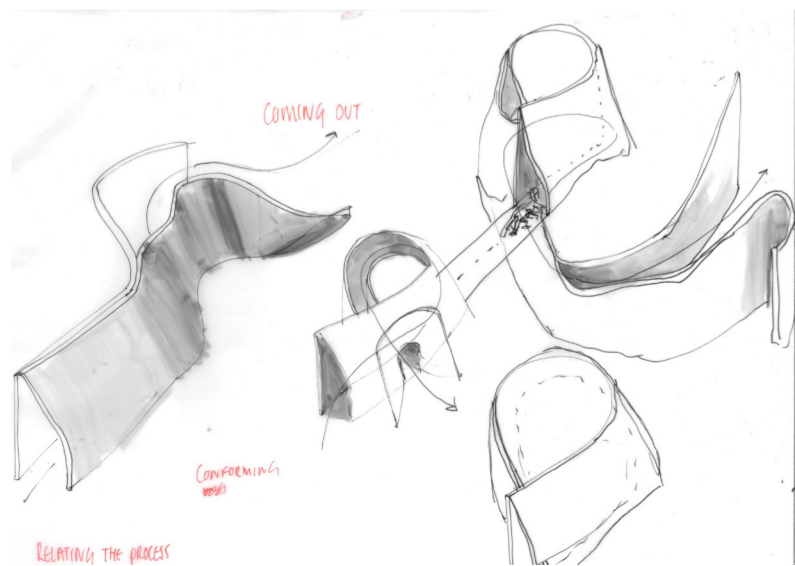
6 MONTHS ON THE STREETS TO BE CONSIDERED FOR HELP



A FORM OF SELF EXPRESSION

The process of coming out embodied in the process of ceramics

Pottery enables for improvements in flow and spontaneity, provides an outlet for grief, and helps with self-identification, self-expression, confidence and self-esteem.



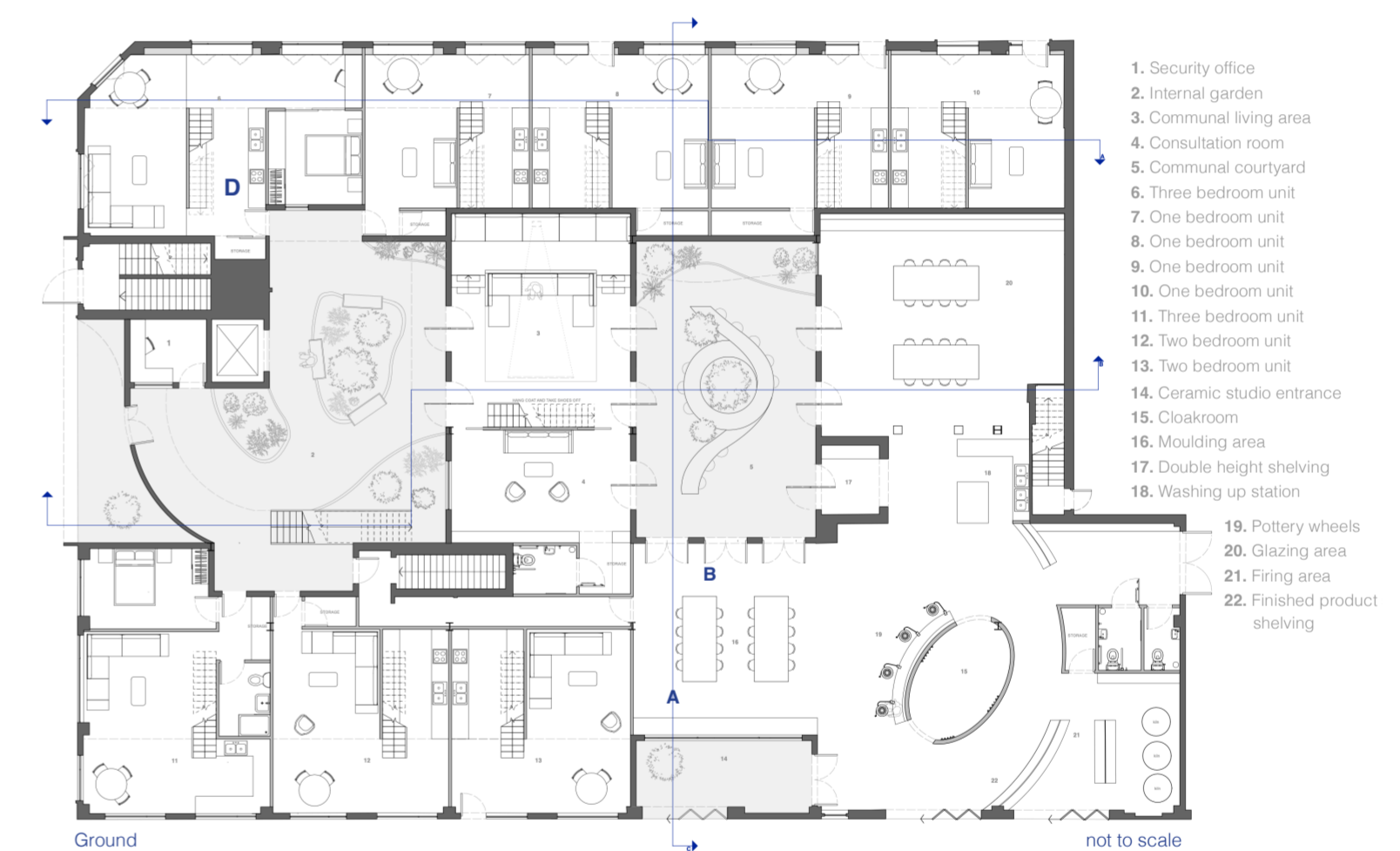
ALL YOUNG PEOPLE, REGARDLESS OF SEXUAL ORIENTATION OR IDENTITY, DESERVE A SAFE AND SUPPORTIVE ENVIRONMENT IN WHICH TO ACHIEVE THEIR FULL POTENTIAL.
Harvey Milk.



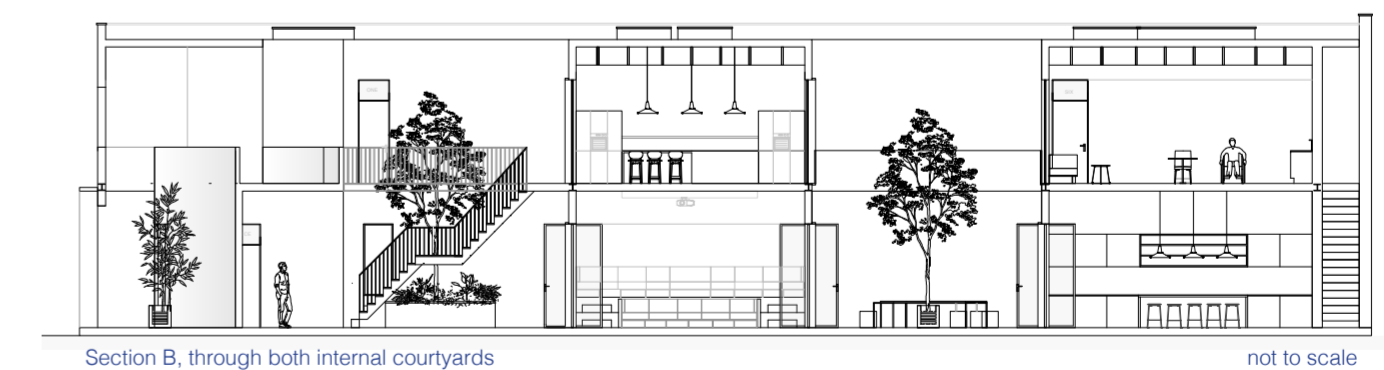
Kiln ceramic studio - a place for self expression and an opportunity for the residents to connect with the local community, embedding them into a community



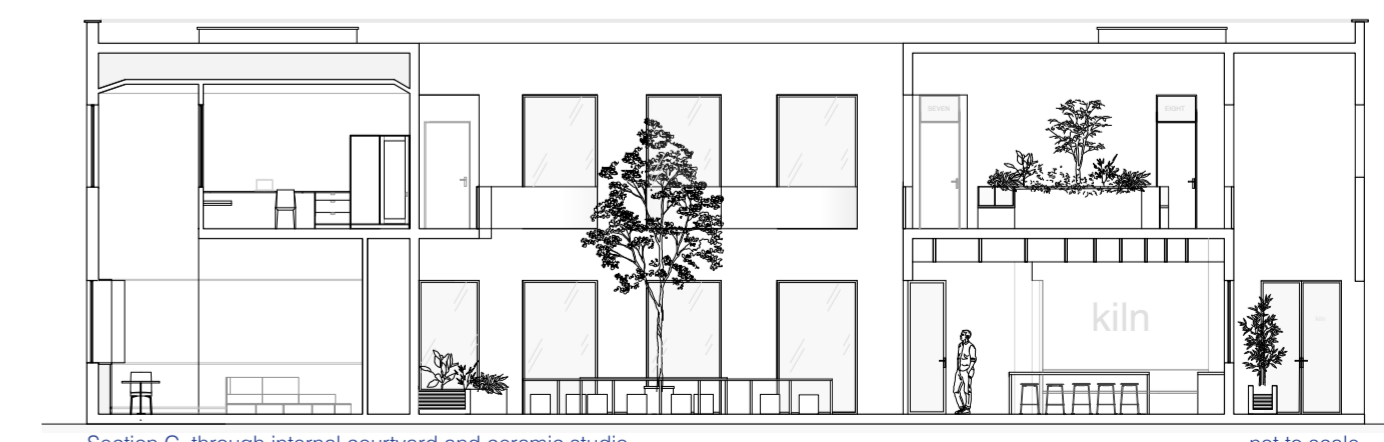
First not to scale



Ground not to scale



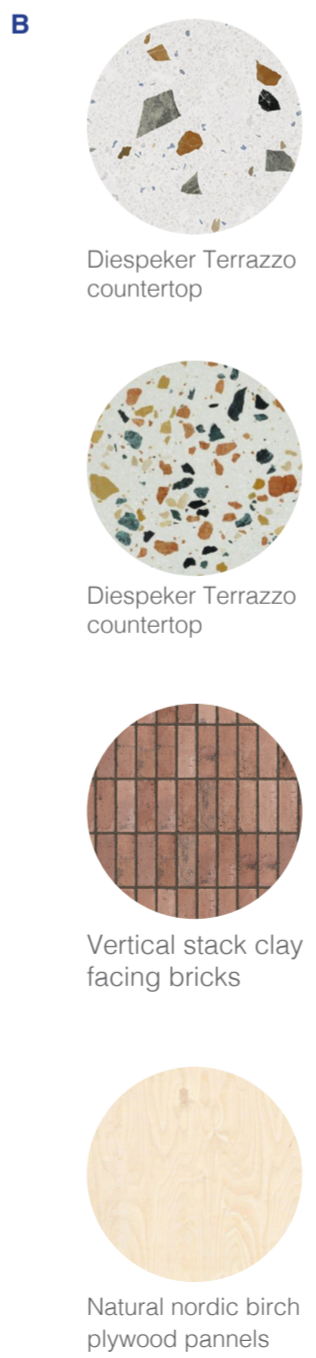
Section B, through both internal courtyards not to scale



Section C, through internal courtyard and ceramic studio. not to scale



Two internal courtyards carved out for the existing structure to let in light and create communal areas for residents. Fluidity and organic forms are prominent throughout the scheme like this table wrapped around the table



Diespeker Terrazzo countertop

Diespeker Terrazzo countertop

Vertical stack clay facing bricks

Natural nordic birch plywood panels

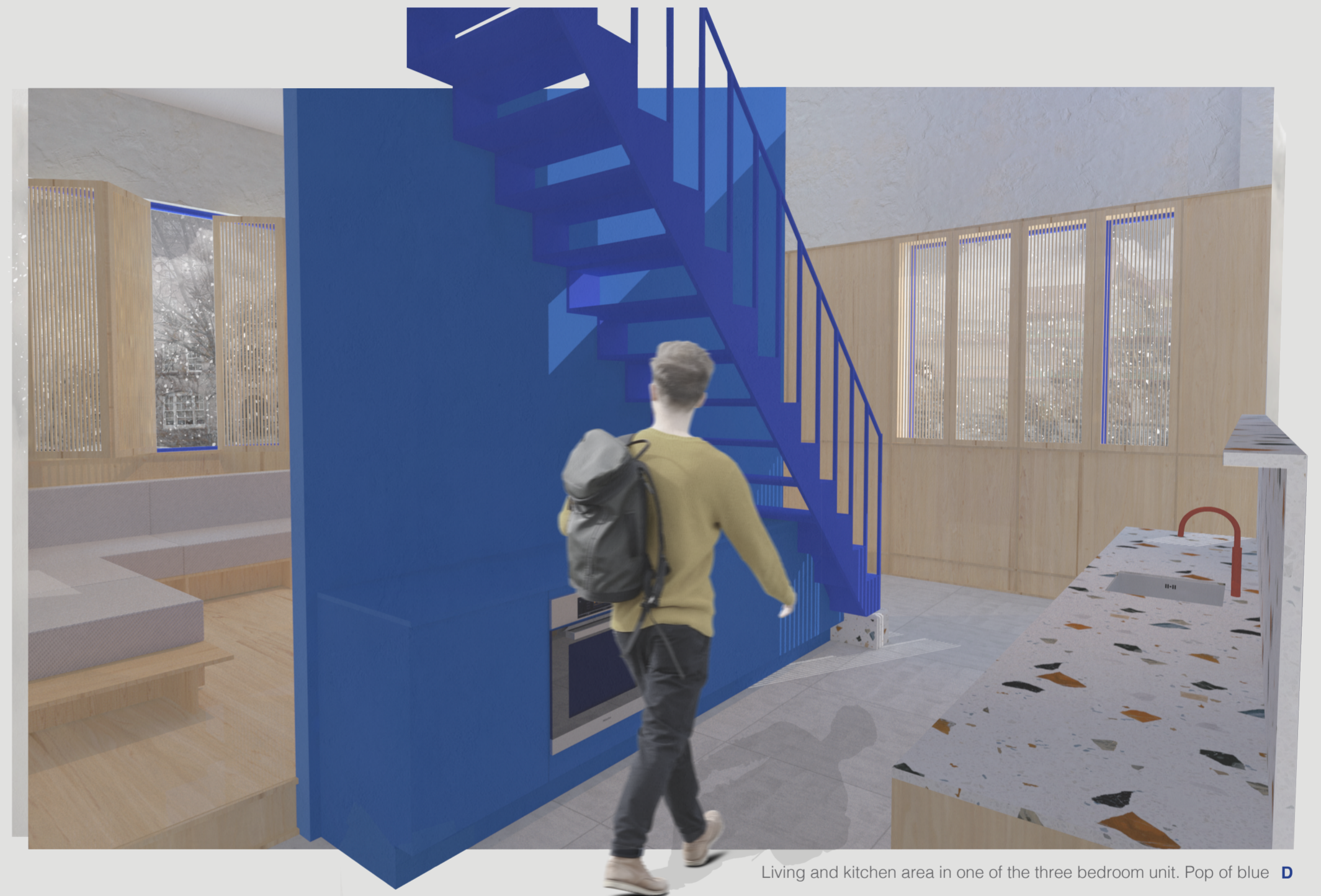
FINDING YOURSELF IS NOT REALLY HOW IT WORKS. YOU AREN'T A TENNA IN LAST WINTER'S COAT. YOU ARE ALSO NOT LOST. YOUR TRUE SELF IS THERE, BURIED UNDER CULTURAL CONDITIONING, OTHER PEOPLES OPINIONS, AND INACCURATE CONCLUSIONS YOU DREW AS A KID THAT BECAME BELIEFS ABOUT WHO YOU ARE.

"FINDING YOURSELF" IS ACTUALLY RETURNING TO YOURSELF. AN UNLEARNING, AN EXCAVATION, A REMEMBERING WHO YOU WERE BEFORE THE WORLD GOT ITS HANDS ON YOU.

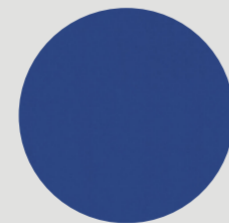
Emily McDowell.



Private bedroom in a three bedroom unit - visualised in winter to refrence their transition into the scheme and in life. All units have built in shelving and pegs to personalise the bedrooms whilst keeping it easy to move if necessary. **C**



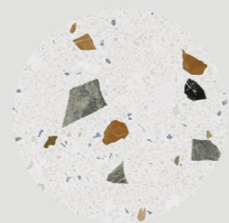
Living and kitchen area in one of the three bedroom unit. Pop of blue **D**



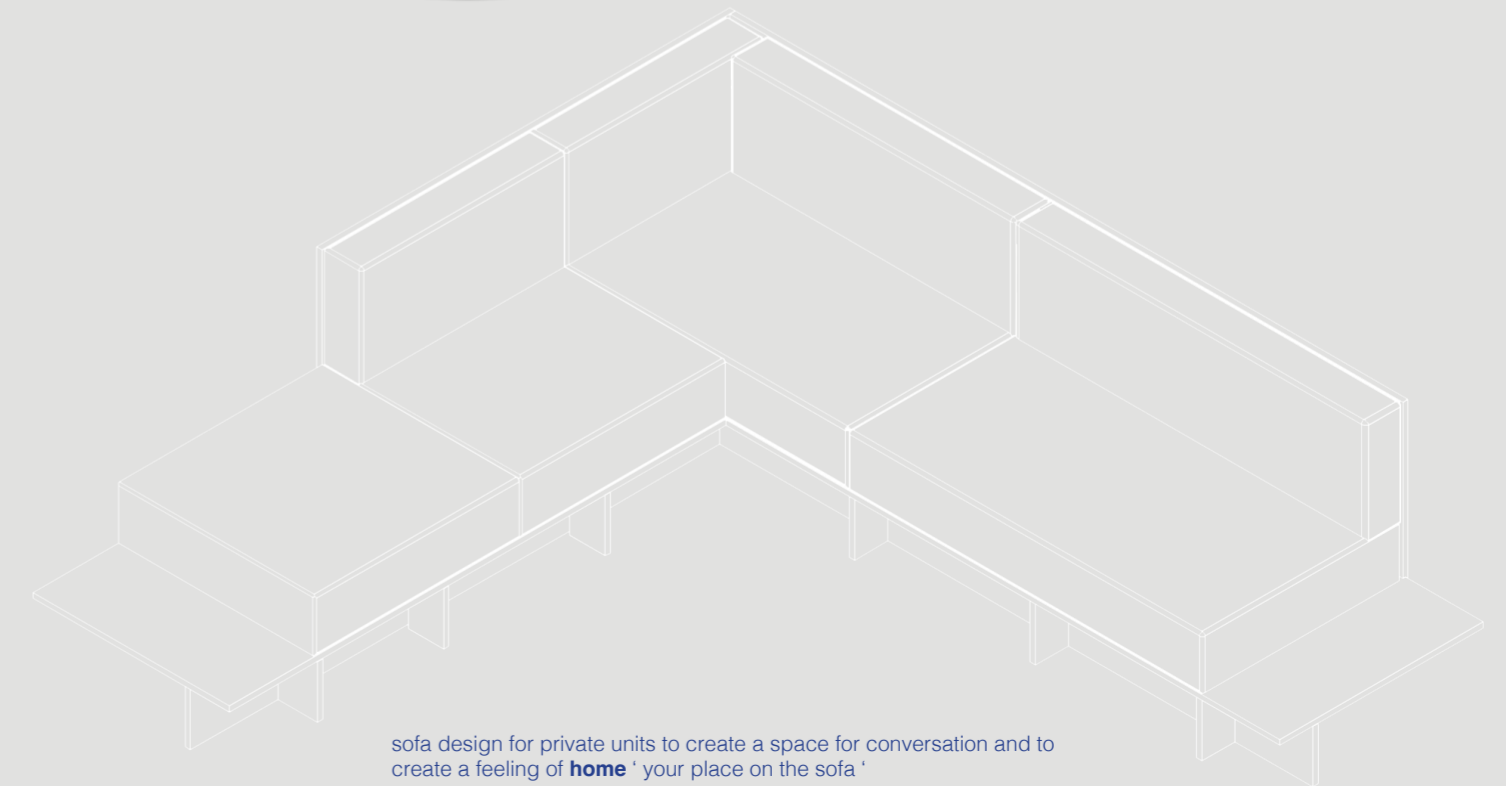
Powder coated steel



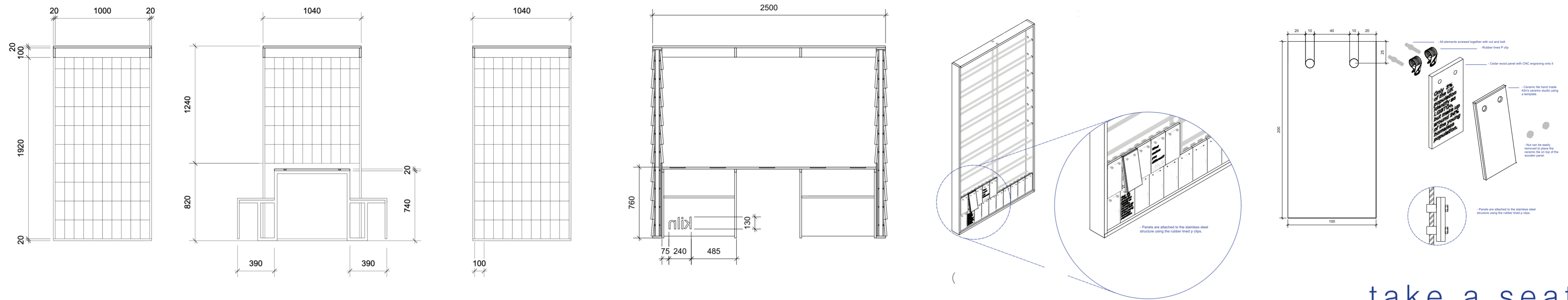
nordic birch plywood



Diespeker Terrazzo countertop



sofa design for private units to create a space for conversation and to create a feeling of **home** 'your place on the sofa'



take a seat

Inspired by a poem by Morgan Harper Nichols, take a seat is a scheme designed to support and connect members of the lgbtq+ community, sharing and capturing queer memories and displaying them in ceramic form. The scheme is designed to begin a conversation on fair housing as well as promote kiln and other local resources, **supporting youth before the worst possible situation**. This all begins with a question, what makes you different? this is in place to encourage an emotional response, leading to an organic physical response at Kiln's Ceramic Studio - supporting and connecting lgbtq+ youth to already established communities.



THERE IS ALWAYS A PLACE AT THE TABLE FOR YOU - MORGAN HARPER NICHOLS