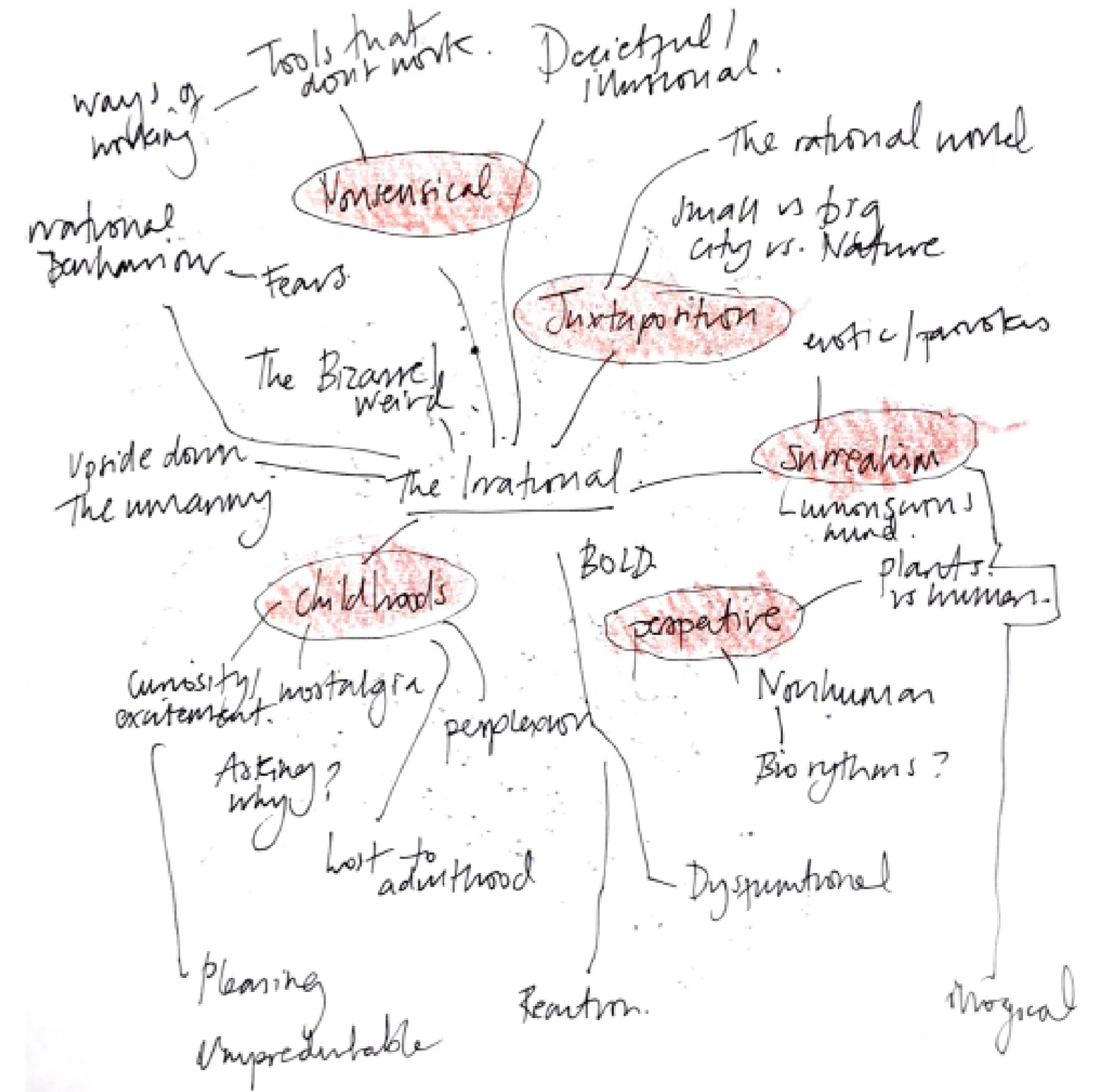
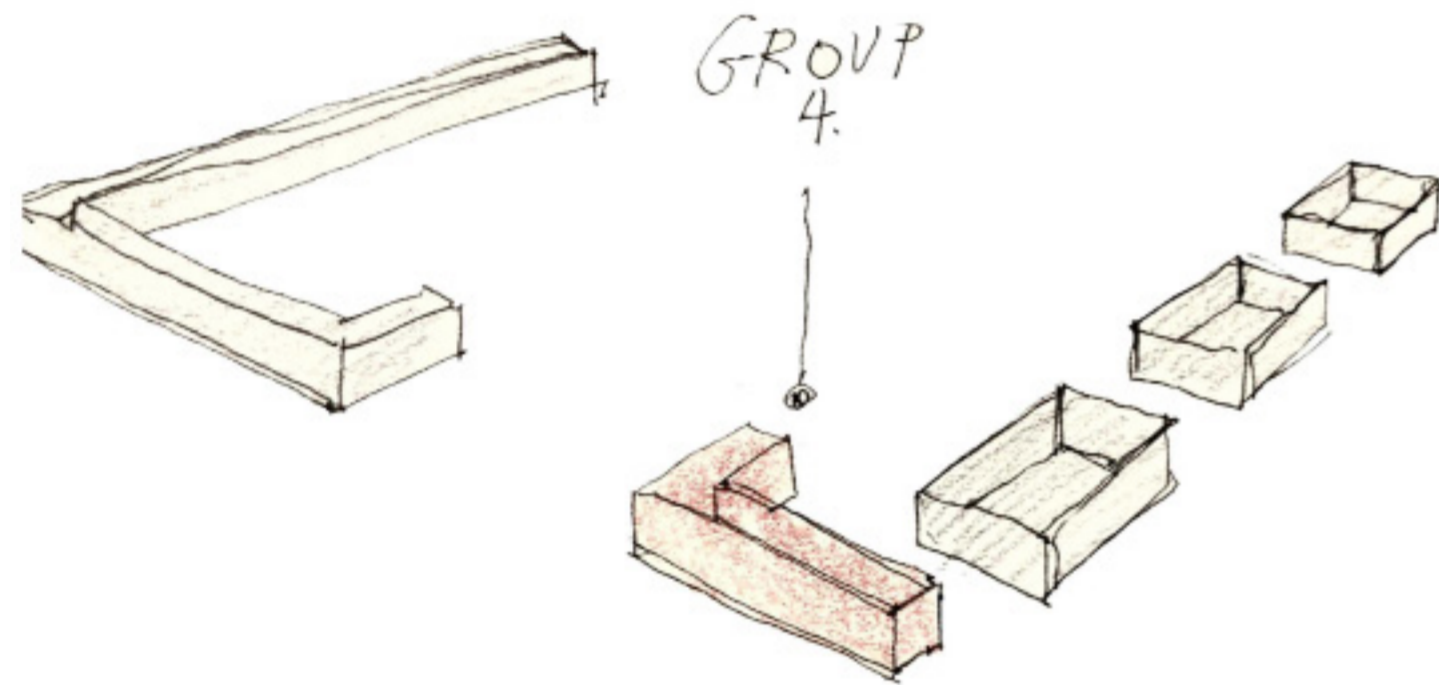
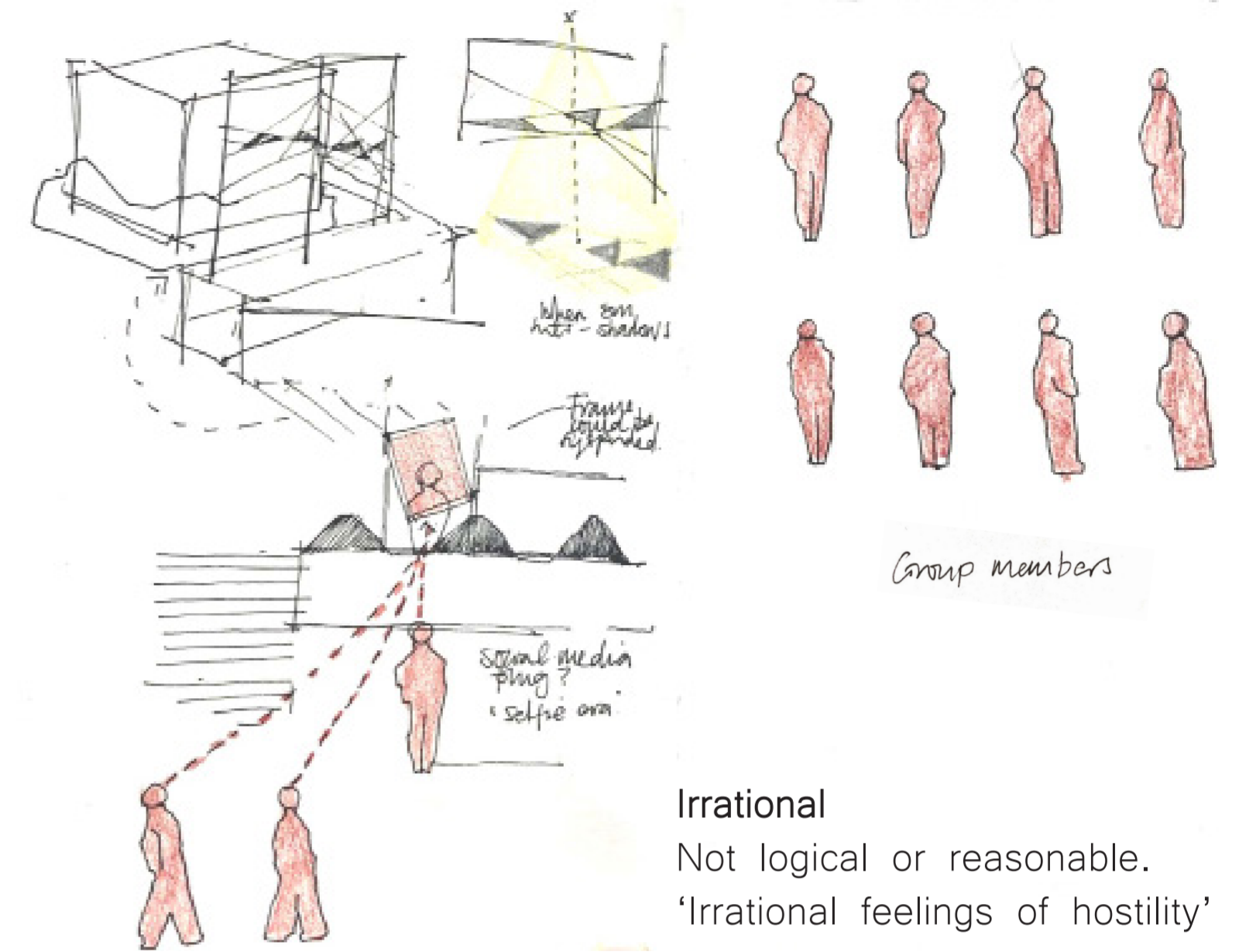


PlantNoma x
The Neighbourhood -
In Praise of the Irrational

'We are trying to re-see the world around us, to feel fully alive in the city we live in. We know there is something stranger, more whole, and less rational just out of view. We know this because we have glimpsed it slantwards in our wilder moments. The rational world has brought our society to this current point of development and we're not sure we like what we see. It is time to step off the rational pathways and transgress. Can we build a garden to explore other forms of knowledge and other forms of meaning?'

Collaborative Brief

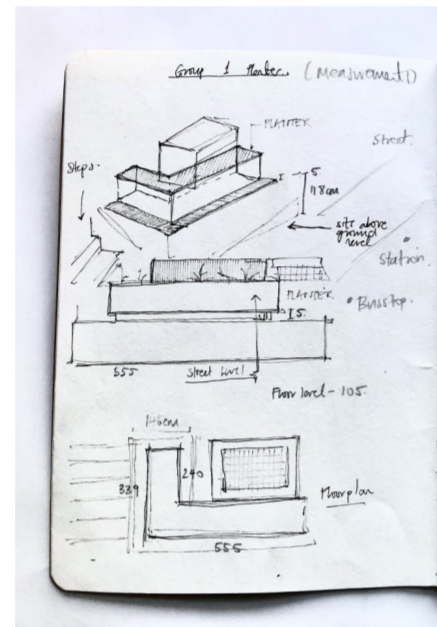
Groups are given a small testbed to interpret their theme - Group 4 being the irrational. 'The aim is to encourage citizens to feel a part of a living planet. These small gardens will be on public display for the following 12-months. All outputs should encourage both human and non-human participation. Therefore the outputs are likely to be a public realm intervention of some description and must be appropriate for the environment. All outputs should be truly regenerative design solutions.'



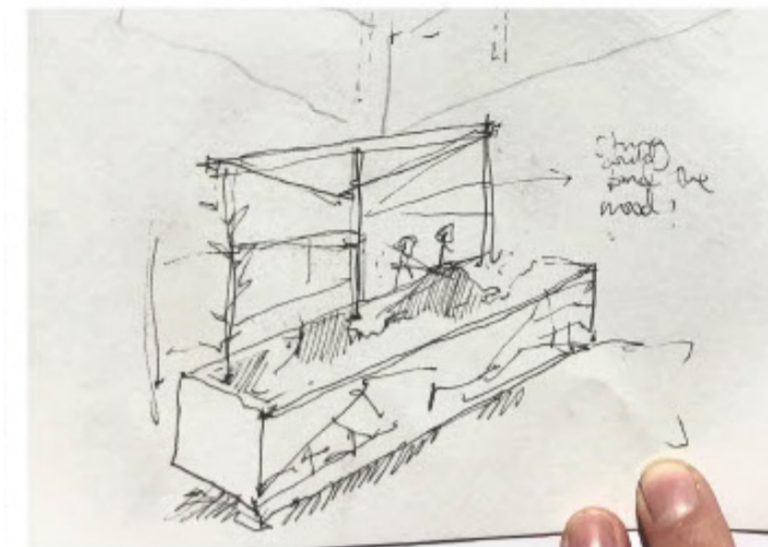
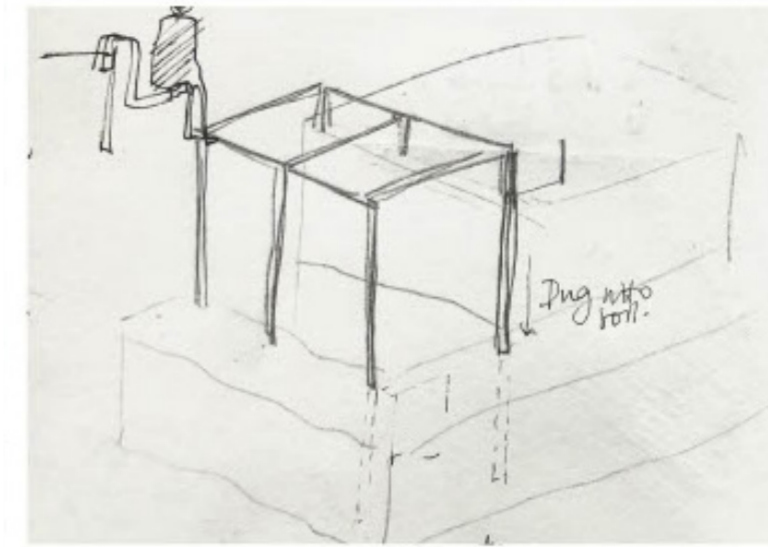
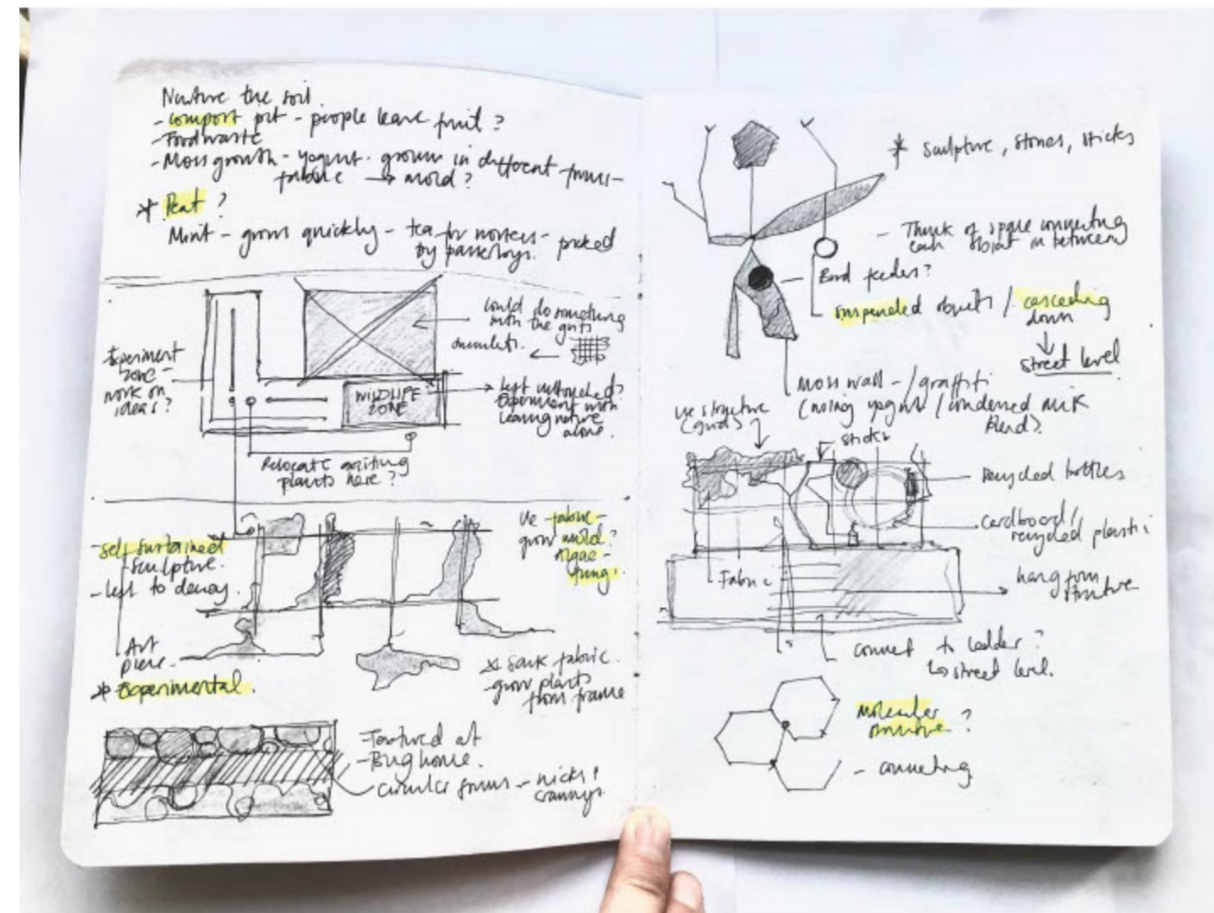


Initial ideas.

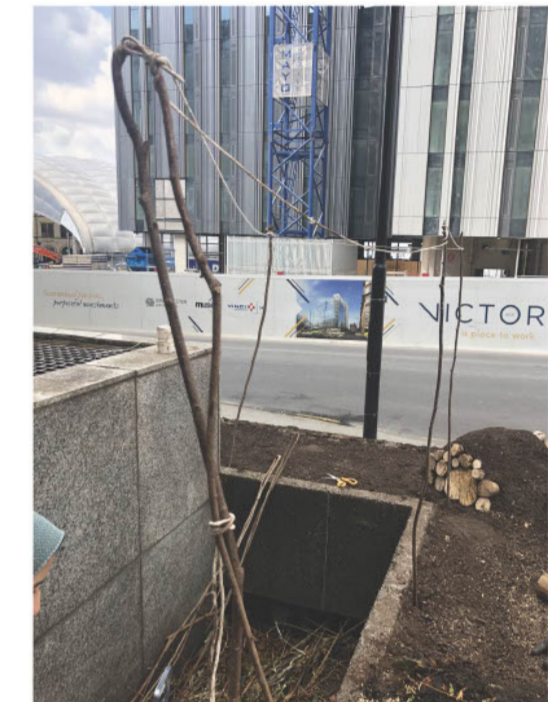
Initial groups thoughts on the plot - very sparse with little biodiversity and 2 species of plant - daffodils and dogwood. The planter sits above ground level, an irrational design which means part of the planter is hard to access. Concrete box behind planter - also slightly irrational, could be incorporated in final idea.



PROJECT DIARY



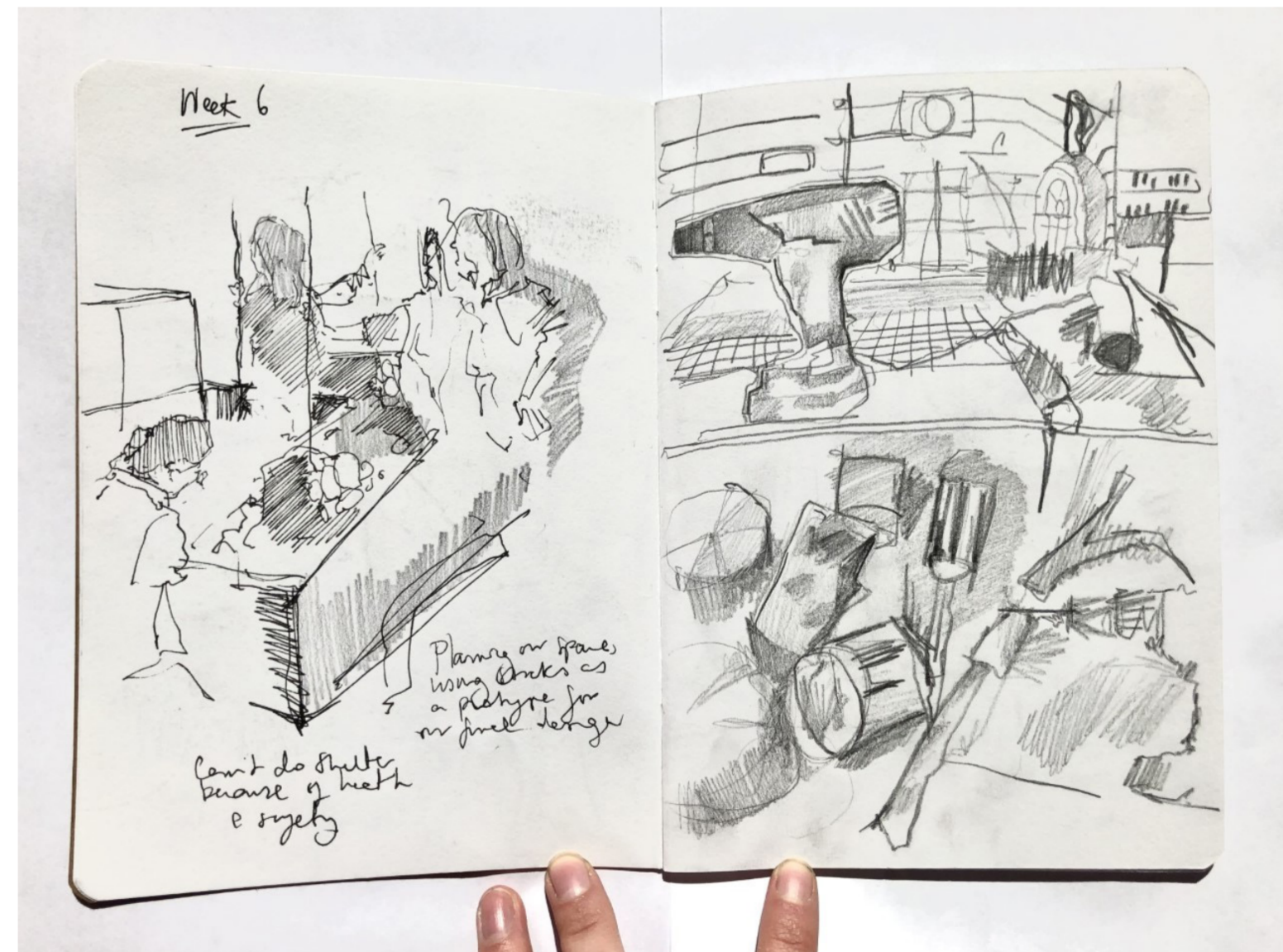
Planning the structure of our sheltered area - the first sketch.



Studies of dogwood and daffodils on site.

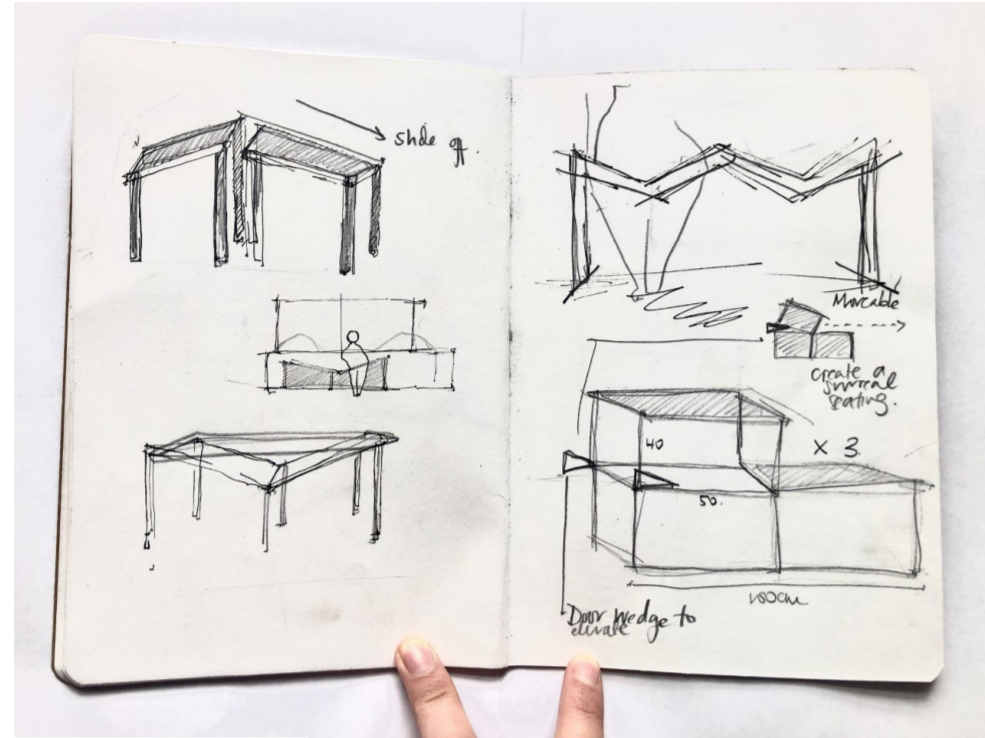


Irrational Processes - With a rush to get ideas going and put some of our ideas into fruition, we frantically began to work on the plot, in a very irrational unplanned manner. We created a strange, distorted landscape, which actually appeared really sculptural, abstract and intriguing.

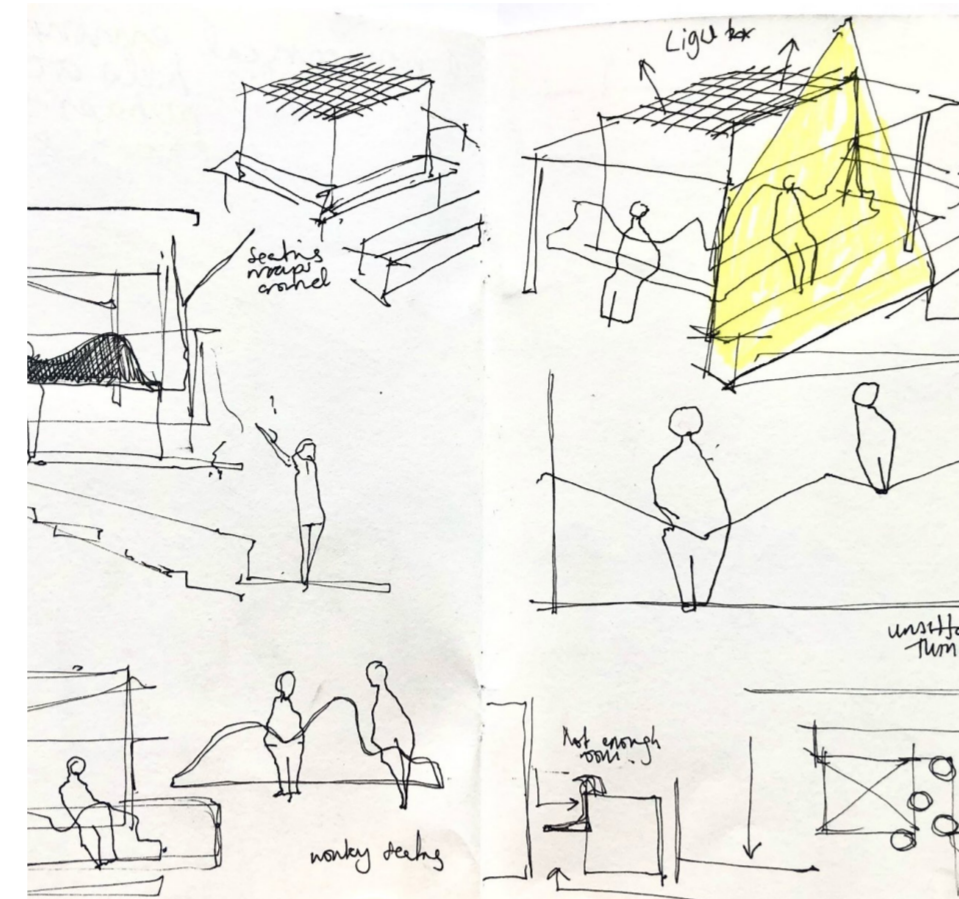


Sketches of materials and group working on planter.

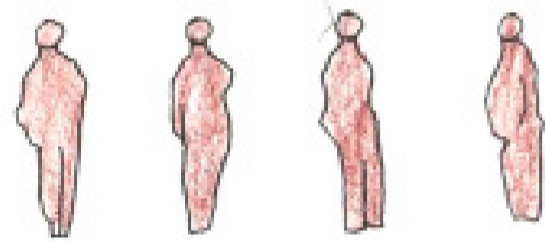
Developing a prototype.



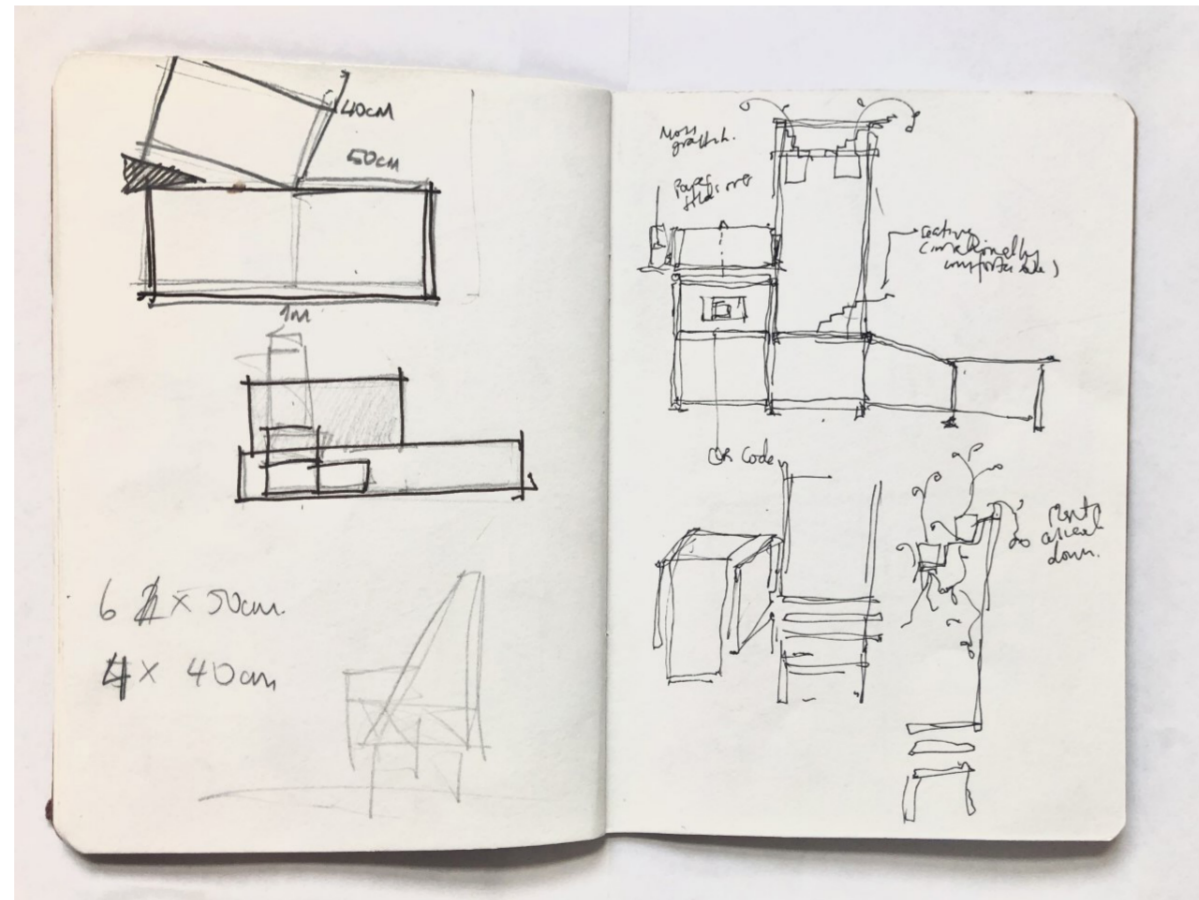
Sketchbook planning - creating 3 stackable seats - experimenting with ways of making it irrational - an unsittable wonky seat?



The exhibition - we created a paper holder which rolls out paper for people to do their own moss graffiti.



Creating a prototype to scale for the exhibition - experimenting with varied media and the stair structure.

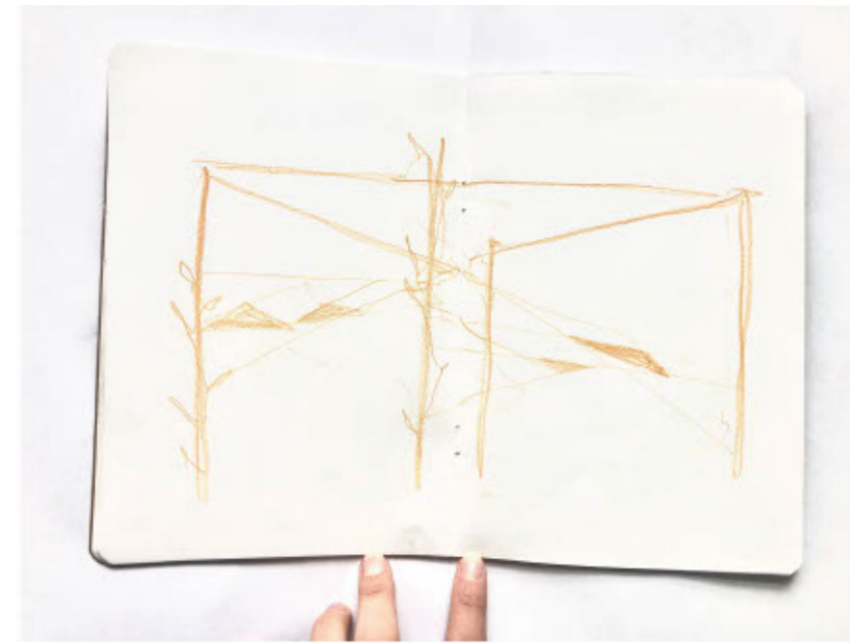
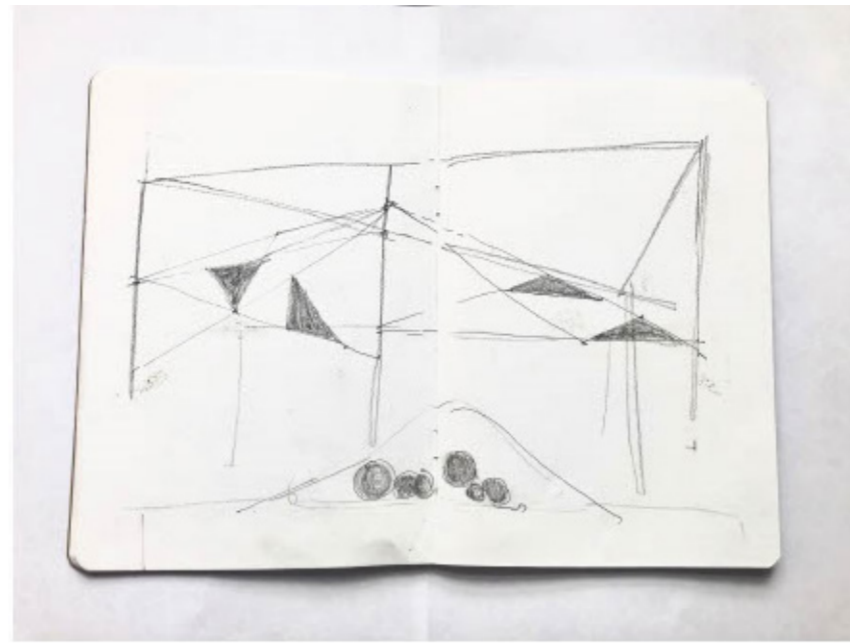
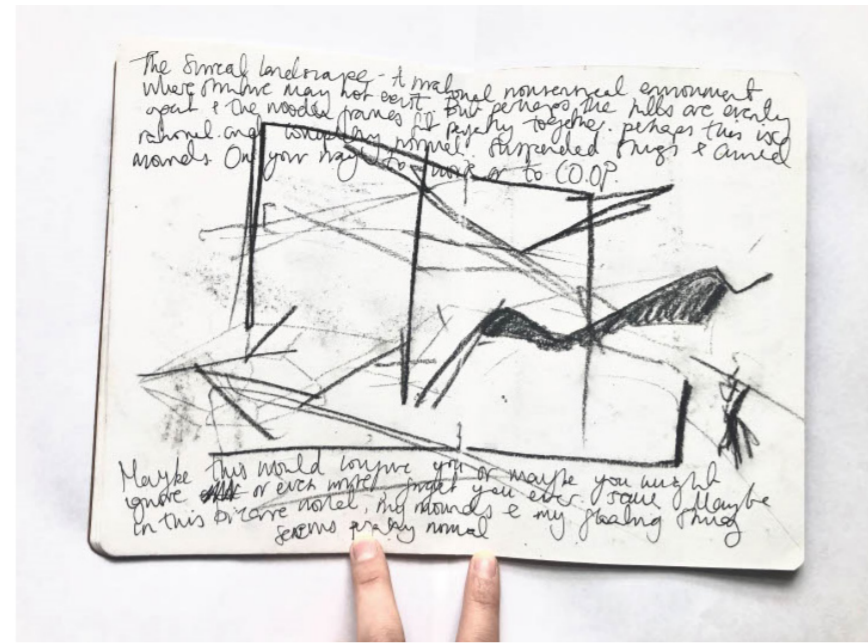


Moss graffiti - a living form of surrealist art, used to draw passerbys into the space and integrate greenery into the grey infrastructure.

Made out of yogurt, honey and picked moss - blended together and painted onto the concrete - so far it has worked well - there is slight growth but needs to be sprayed with water regularly.

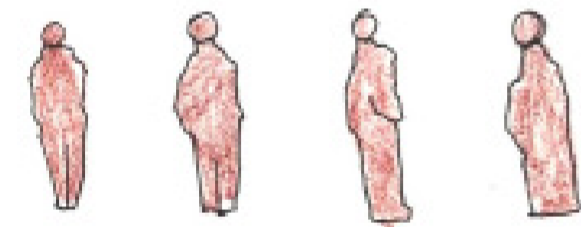
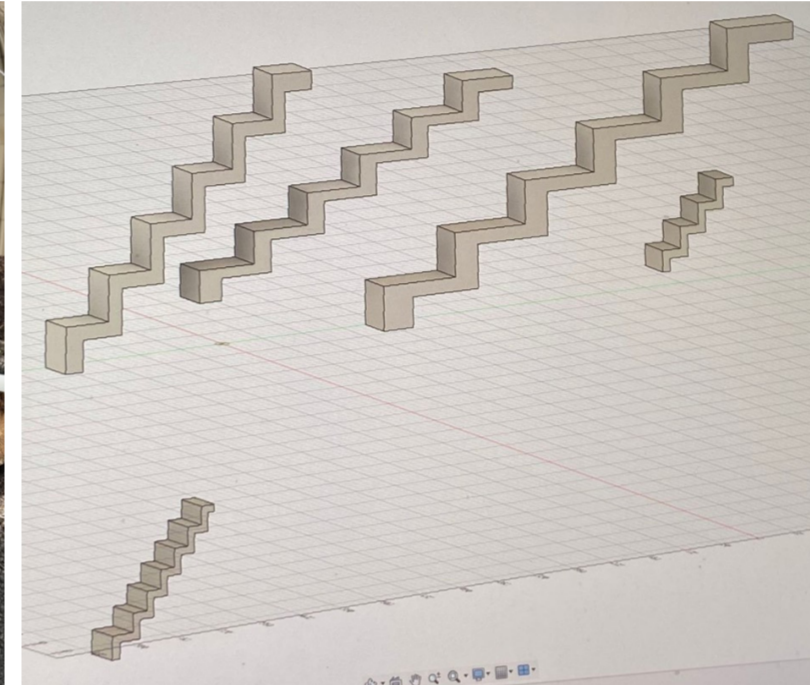
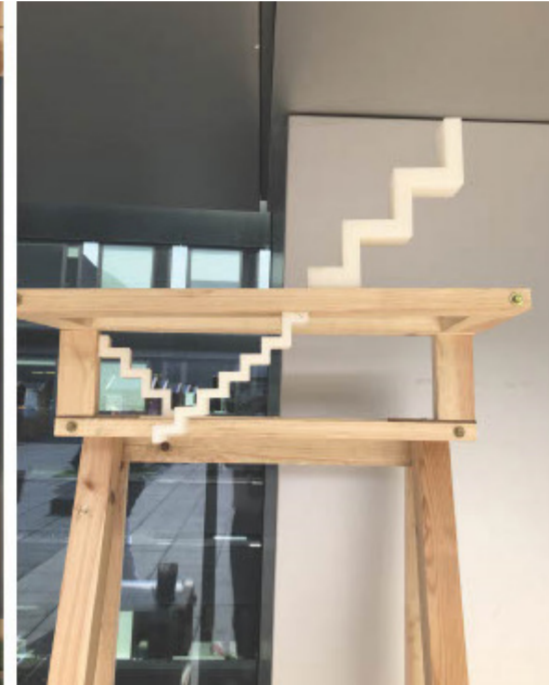
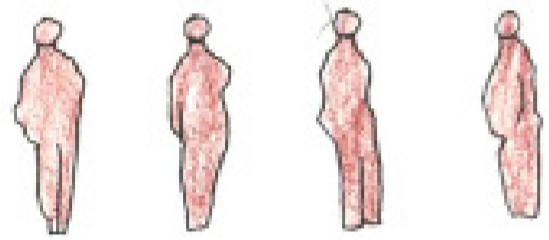


Exhibition Day.



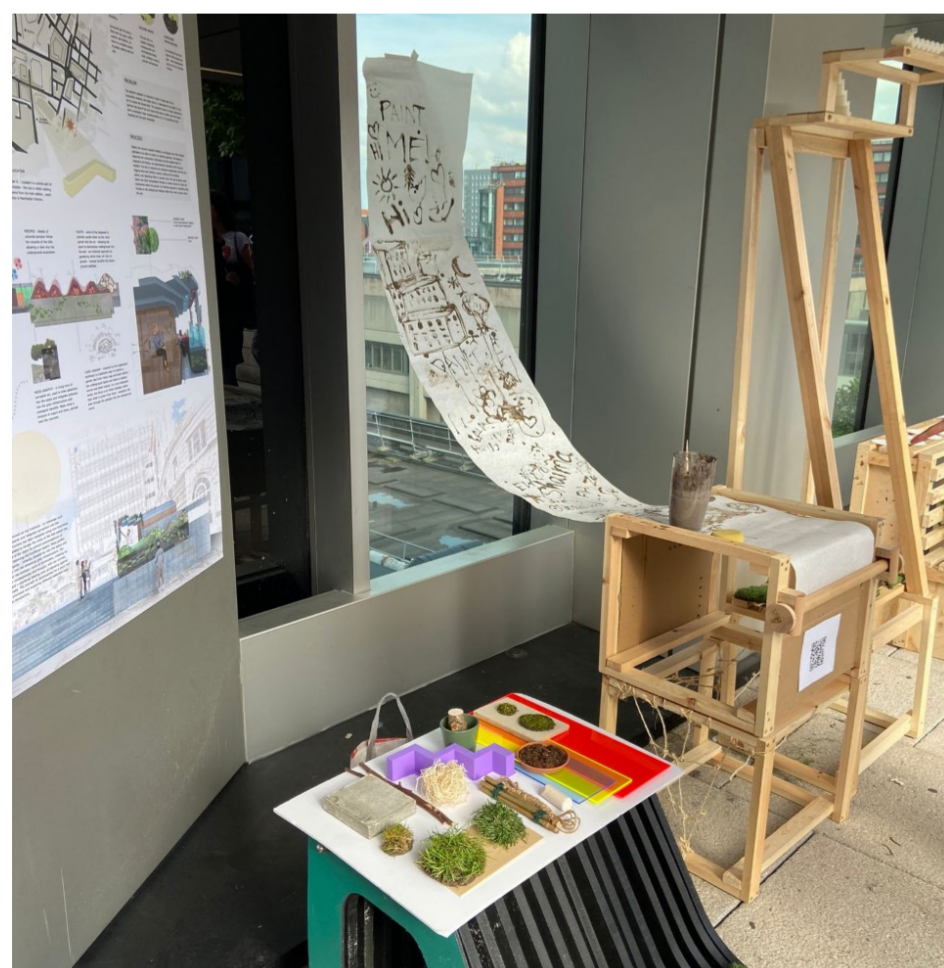
Using string to create interesting patterns and shadows, mirroring the moss patterns on the planter.

Inspired by surrealist artists such as Escher and Rachel Whiteread – the stairs are incorporated into the planter – creating puzzlement and illusion. Such simple structures symbolise normality and the ordinary, but by removing the stairs functionality, it forces viewers to question the space and its purpose.



About the Plot.

Our proposed idea is focused on surrealism and conceptual landscaping. By creating a surreal landscape that also functions as a seating area, the space becomes an escape from the ordinary, fastpaced nature of the city. The use of stairs will be integrated into the plot, inspired by the likes of Escher and Rachel Whiteread. By placing these mysterious tiny stairs, we are subverting preconceptions of everyday experiences, removing the functional element. Moss Graffiti will sweep across the planter, drawing passers-by into the space and integrating greenery and art into the grey infrastructure. Outdoor spaces have always in a sense been surreal, the formality of tree planting and sculpted bushes is so unnaturally structured, that it could be considered to undermine the natural world. This space challenges the mundane, and integrates surrealism into the everyday – a form of art rarely seen outside the realms of art galleries. Creating a surreal landscape using natural elements in the city centre is unarguably irrational and bizarre, altering the ordinary route of commuters and creating an intriguing space for contemplation and thought, a juxtaposition against the constant noise. The plot will be accompanied by a short film documenting the process of executing the designs and exploring different materials used from a non-human perspective.



The proposed seating area – a sheltered area that hides inside the planter.

