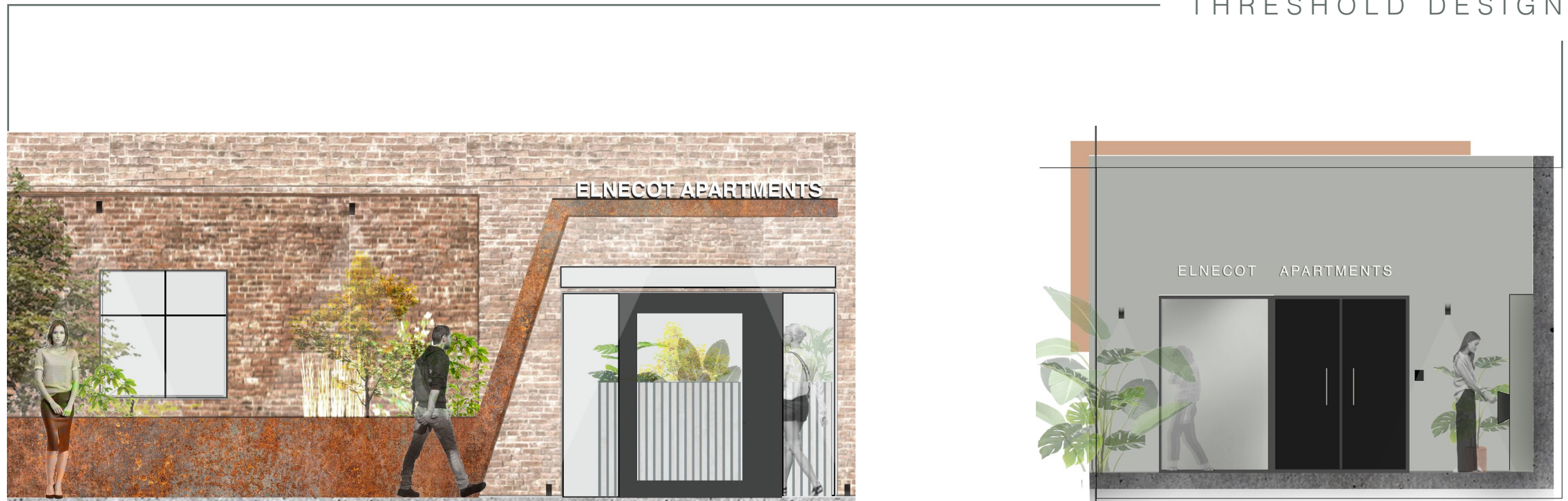




INDOOR GARDEN



The tenants of Elnecot Apartments are at the centre of the design process, not only with the apartments but for the rest of the building. The threshold Design ensures there is a welcoming front entrance for the public, and also a private secure side entrance to get to the apartments.

The angled canopy above the pivot door is to emulate an angled window pre-existing to the site. This key feature was carried through in multiple different areas including the shape of the void.

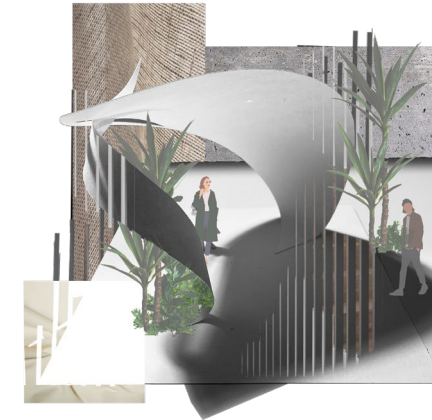


The Site is 110 Oldham Road, Ancoats, Manchester. Currently houses The Mustard Tree who are an organisation that help to combat poverty and help the homeless community.

The site prompted many design decisions due to its central location, transport links, and industrial heritage.

ELNECOT

APARTMENTS



Elnecot Apartments is located in Ancoats, Manchester. It hosts a set of 10 affordable micro-apartments, purposefully designed for young professionals, with communal spaces, including a vast indoor garden at the centre that provides different areas to promote a social way of living. The scheme uses these key features to encourage a positive and welcoming living space while tackling real world problems that young people face.

The current financial climate for first time buyers is steadily becoming more unachievable due to extremely high housing prices, an issue that initiated the design process of Elnecot Apartments. Biophilic design is incorporated throughout, as studies show that people are happier, healthier, and much more productive when they are in regular contact with plants, natural light, and natural materials. The interior of this space juxtaposes the busy and bustling city centre and can be used as an escape for not only the tenants but also the public.

The shift in house prices and the cost of living vastly effects young people so as part of the tenancy there is a financial scheme devised to ensure tenants put money away each month for a deposit on a house in the future.



THE SITE

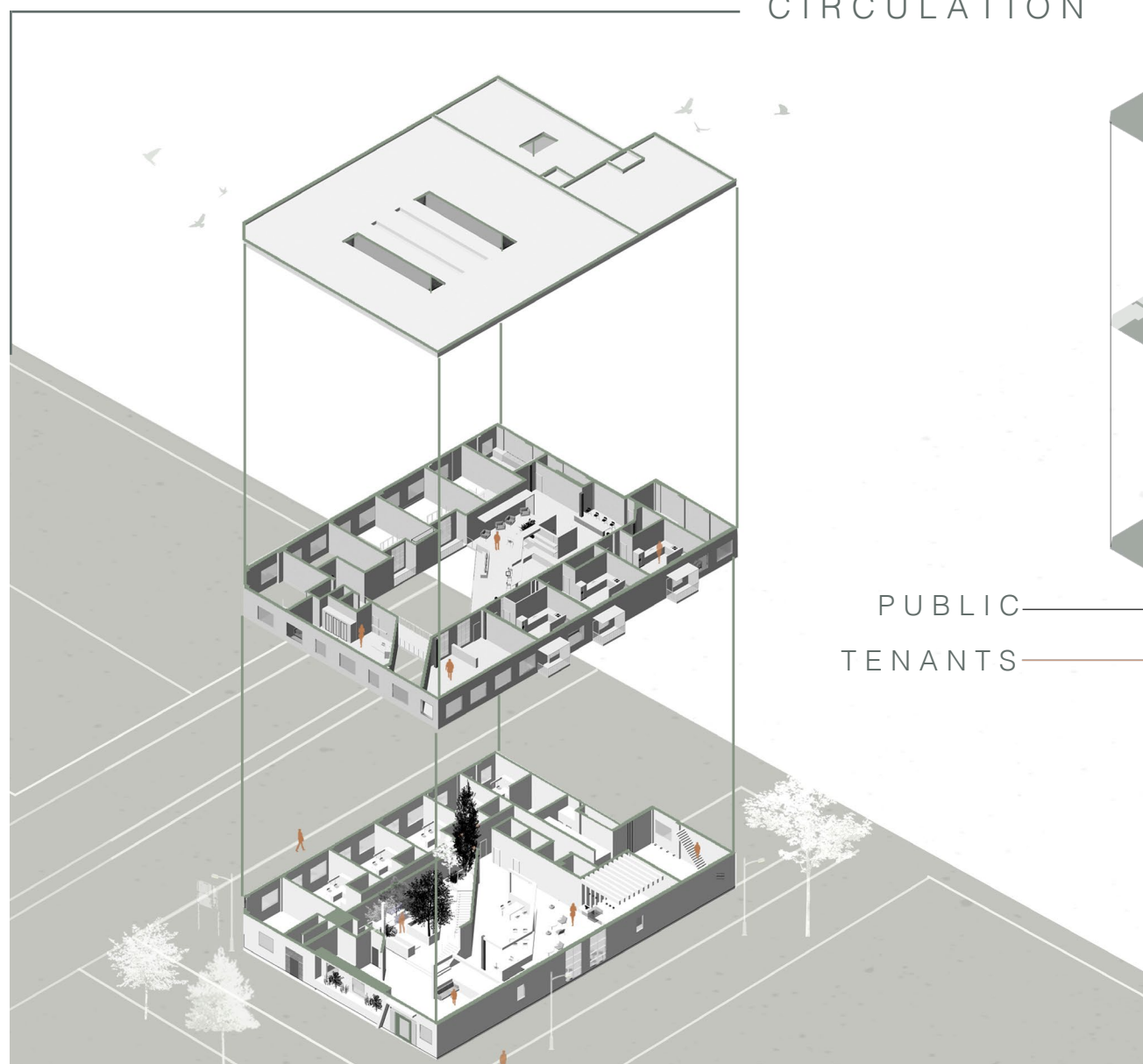


CO-WORKING SPACE

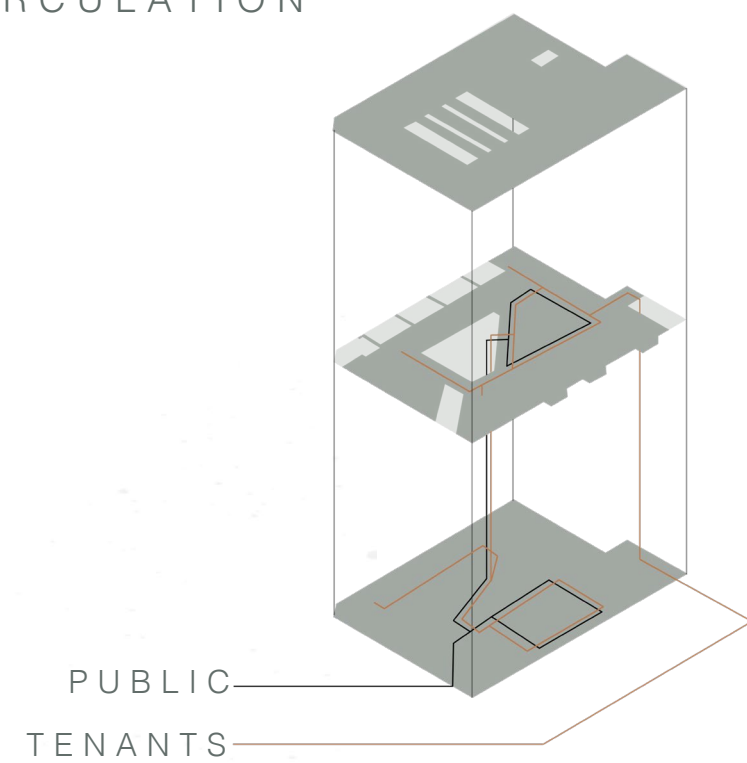


Within Elnecot Apartments there are two different types of apartments, a duplex that has a mezzanine level, alongside a standard studio apartment.

DUPLEX APARTMENT

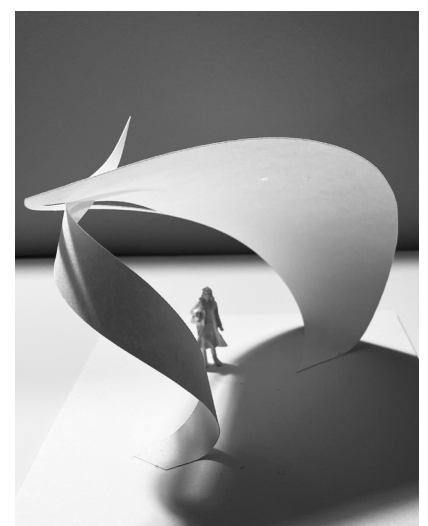


CIRCULATION



PUBLIC
TENANTS

The circulation around the building and how the tenant will access each apartment lead the overall design. Having the apartments around the outside of the building so they each have windows with plenty of natural light.



CONCEPT
MODELS



INHABITANTS CAFE

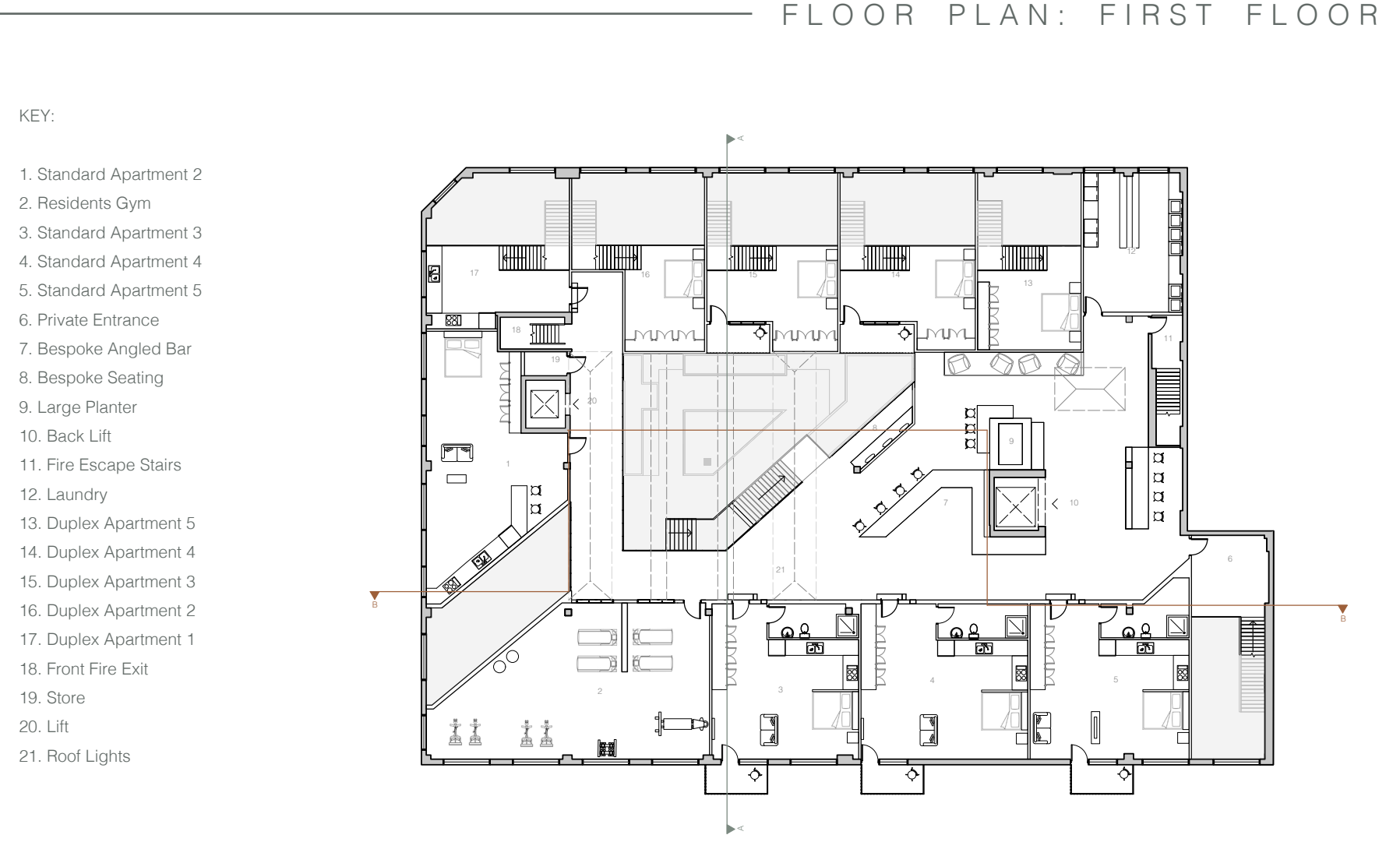


MATERIALS PALETTE

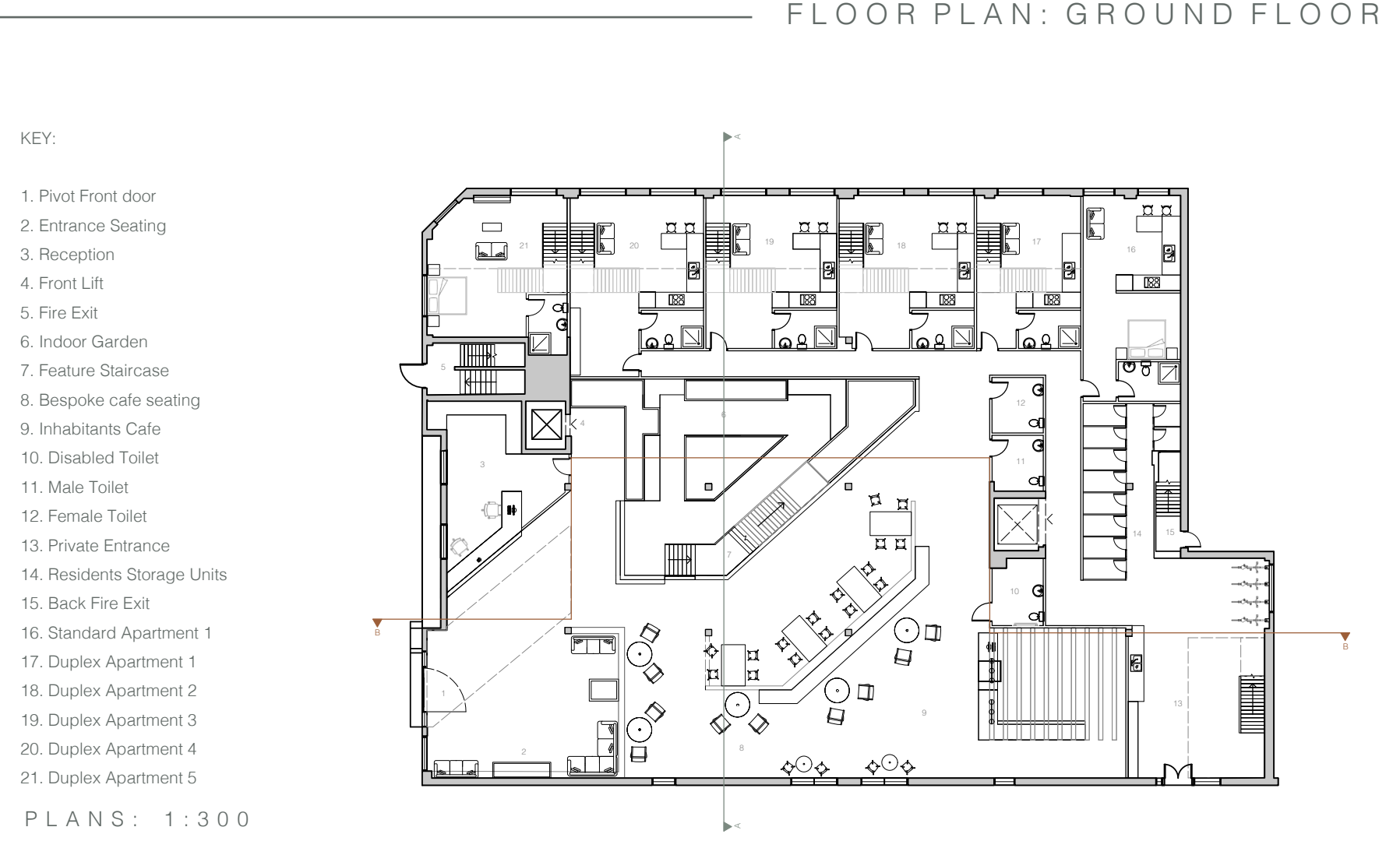


COLOUR SCHEME

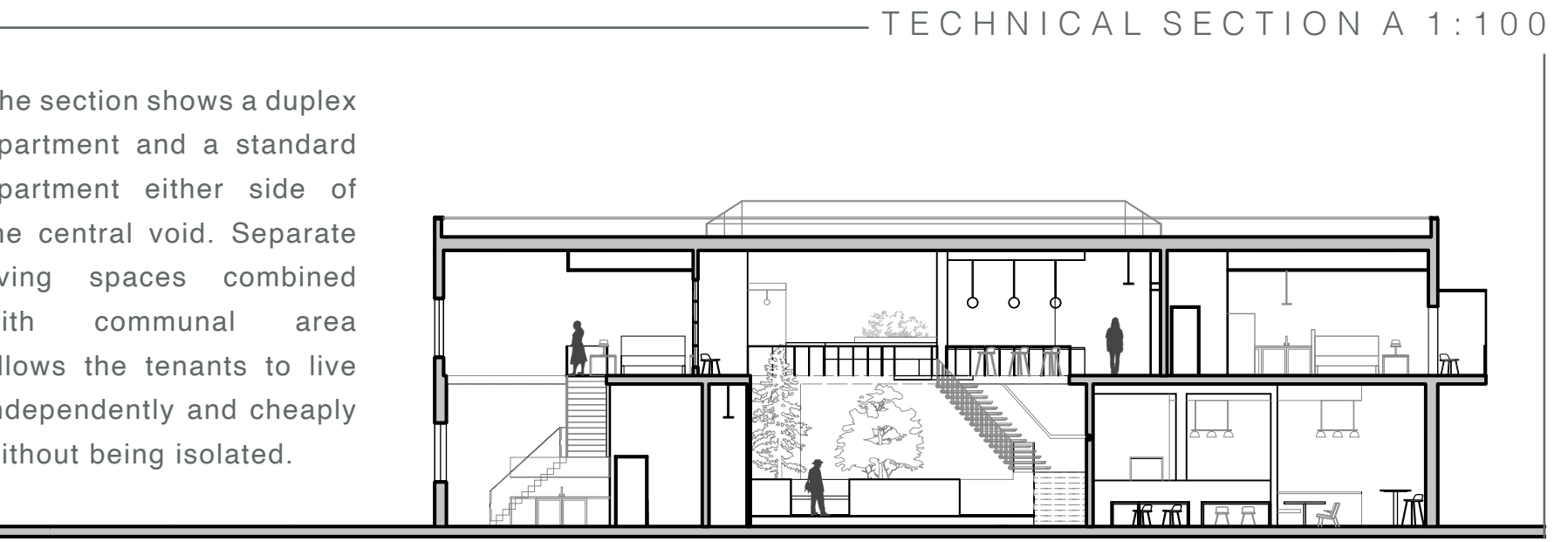
Biophilic design and the industrial style of the building influenced the materials chosen within the scheme. The colour palette contains natural tones to enhance the beneficial effects of living and working around plants. There is acoustic sound panelling for the co-working space to ensure the noise from the vast open void is minimised, as well as soft upholstery fabrics for the furniture. The hero material is the Corten Steel used throughout the scheme as an accent.



FLOOR PLAN: FIRST FLOOR



FLOOR PLAN: GROUND FLOOR



TECHNICAL SECTION A 1:100

The section shows a duplex apartment and a standard apartment either side of the central void. Separate living spaces combined with communal area allows the tenants to live independently and cheaply without being isolated.