

REASONS FOR COMMUNITY CENTRE

1 GENTRIFICATION /DISPLACEMENT
 The population has doubled to 60,000 since 2014.
 £2 million a week being spent on Manchester city centre
 10,000 flats are being built in the city centre
 2,000 were completed last year
 3,000 are expected within the next three
 30 per cent rent increase over the last 5 years

2 HEALTH DECINE
 Demands for care increased since lockdown 2020
 65% increase in dementia and Alzheimers deaths since the pandemic
 21% of adults experienced some form of depression in early 2021
 this is more than double the results from 2019

3 INCREASE ASYLUM SEEKERS
 Since 2014 the immigrant population in manchester has almost doubled.
 many residing in Moss side and Rusholme
 September 2021- 4756 asylum seekers living in greater Manchester
 20.5% of the asylum population live in the north west

M1 7DB Demographic
 Mostly administrative positions
 Age groups 20-24 / 30-44
 Majority have a degree
 Majority White/Chinese

Rusholme Demographic
 Mostly semi-skilled/manual workers
 Age groups 20-55
 22.9% no qualifications
 White/Chinese/Black/South Asian
 9.4 % born outside Europe
 Main religious groups:
 Atheist/Christian/Muslim

Supporting Asylum Seekers/Refugees

Top 5 Asylum Application Countries:
 Iran (6,002)
 Eritrea (4,412)
 Albania (4,010)
 Iraq (3,042)
 Syria (2,303)

The majority of asylum-seekers do not have the right to work in the United Kingdom and so must rely on state support.

Housing is provided, but asylum-seekers cannot choose where it is, and it is often hard to let properties which Council tenants do not want to live in.

1,171 people were resettled through these schemes in the year to September 2021
 (up from 353 the previous year, a figure affected by the pandemic).

£39.63 available per person, per week, which makes £5.64 a day for food, sanitation and clothing

Information Source
 Refugees, U., 2021. Asylum in the UK. [online] UNHCR. Available at: <https://www.unhcr.org/uk/asylum-in-the-uk.html> [Accessed 2 December 2021].

CONCORD COMMUNITY CENTRE

- >A community centre to provide support and opportunities for disadvantaged members of society, in a comforting and non-systematic manner.
- >Providing a sense of community for residents affected by gentrification that is currently taking place in Greater Manchester.
- >It will run classes and workshops for targeting different health issues due to recent difficulties in receiving care following the high demand since COVID-19.
- >Jobs will be available for asylum seekers in the area, as well as opportunity for independent business at the market
- >Work experience and volunteering will be open to language students in the neighbouring Universities to help asylum seekers and non-english speaking members of the community.
- >Members of the community will be able to run their own workshops and classes, beneficial to older/retired residents as well as younger groups of people.
- >The cafe and market offer pay as you feel foods donated by local supermarkets excess produce. As well as pay as you feel clothing and items donated by members of the community.



Somali 1st gen immigrant, working in the city centre but finds a lack of cafe's that feel familiar and that serve what she is craving.



Turkish background. Since they retired they are looking for a culture where people sit out and have a lively community+events. Liked to play and sing traditional Turkish music.



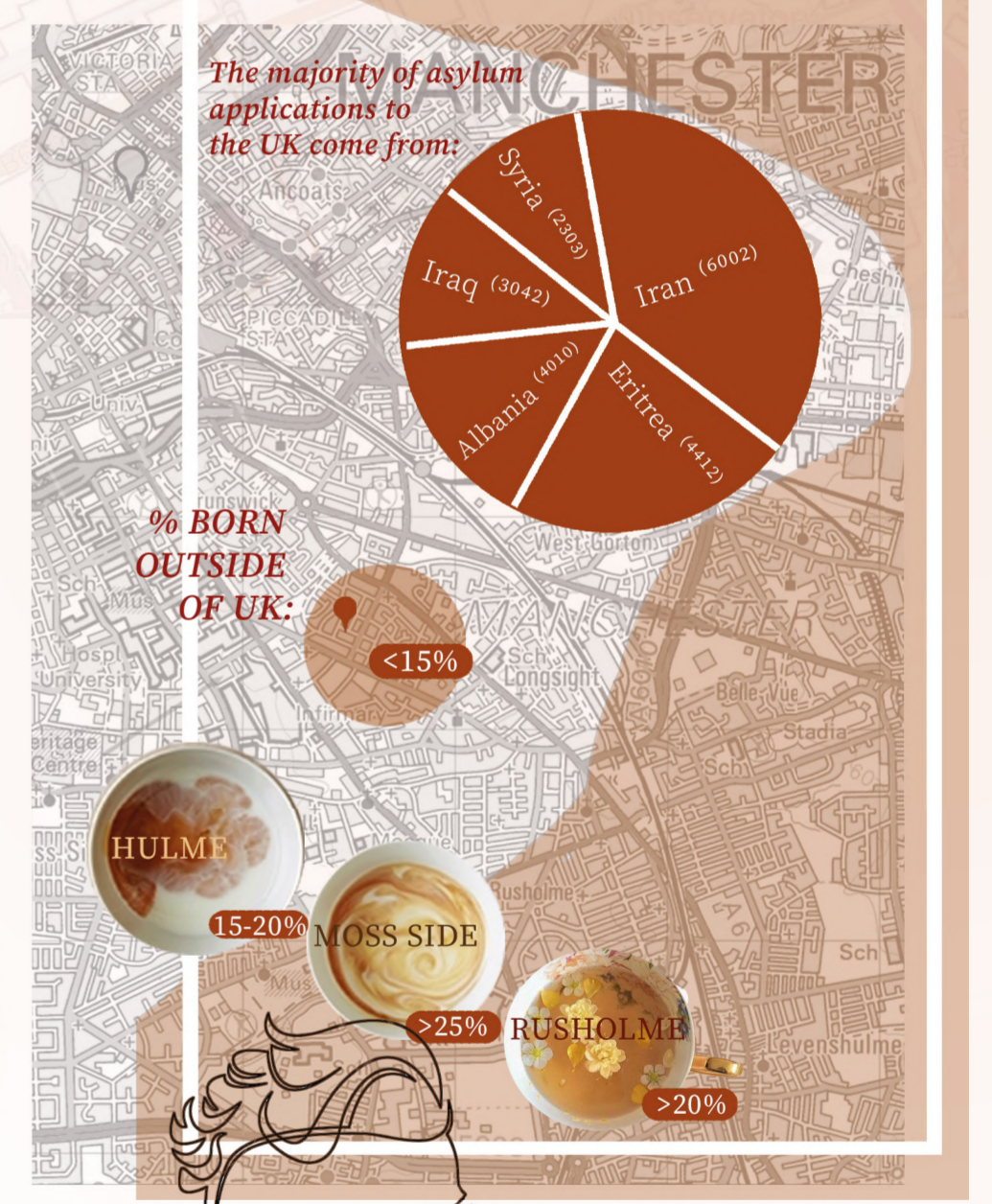
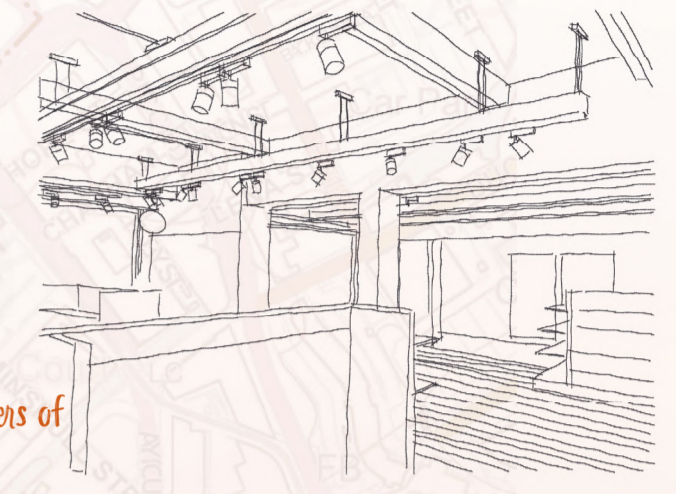
Eritrean living in Hulme, rents a shared flat. Currently working multiple jobs. Still adjusting to the way of life in the UK and feeling slightly out of depth and uneasy. Missing certain aspects of home and being/working in a community.



24 years old, working and living in Rusholme. Provides for Mother and younger brother who followed from Syria. Struggles with language barrier and finding work that fits schedule and his level of qualifications.

CONCHORD CAFÉ

>A Tea House providing live music, performed by members of displaced groups/communities.
 The aim being to create a sense of belonging and safety, as well as celebrate pride in one another's culture.
 >This Cafe will link to the Concord Community Centre on Charles street, it will also be providing jobs to asylum seeker communities as well as people with no qualifications but other skills.



CONSIDERATIONS:

Uniting:

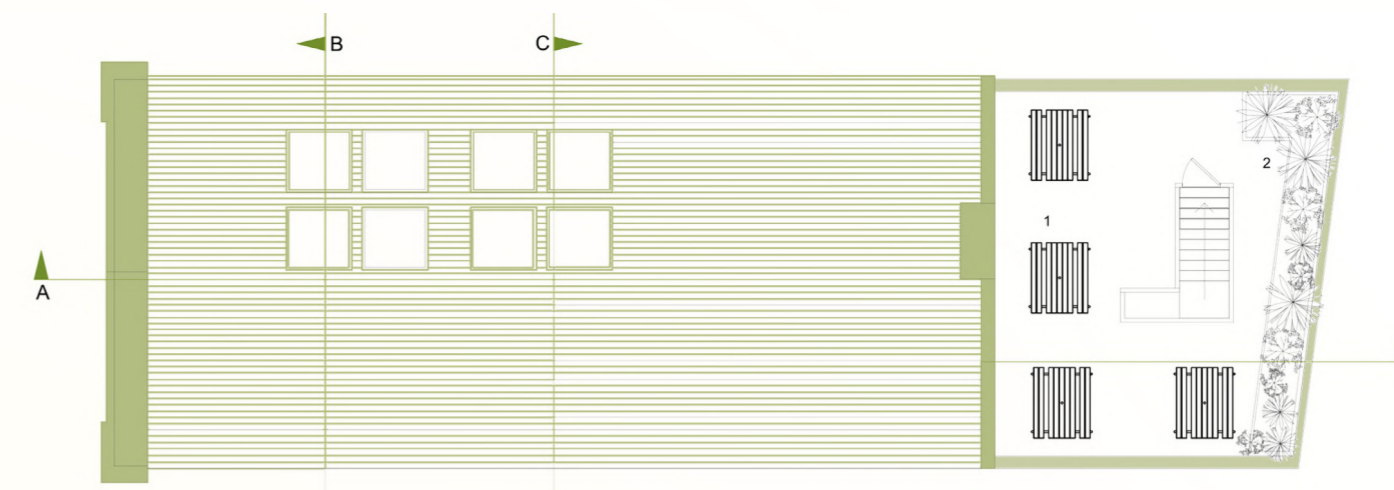
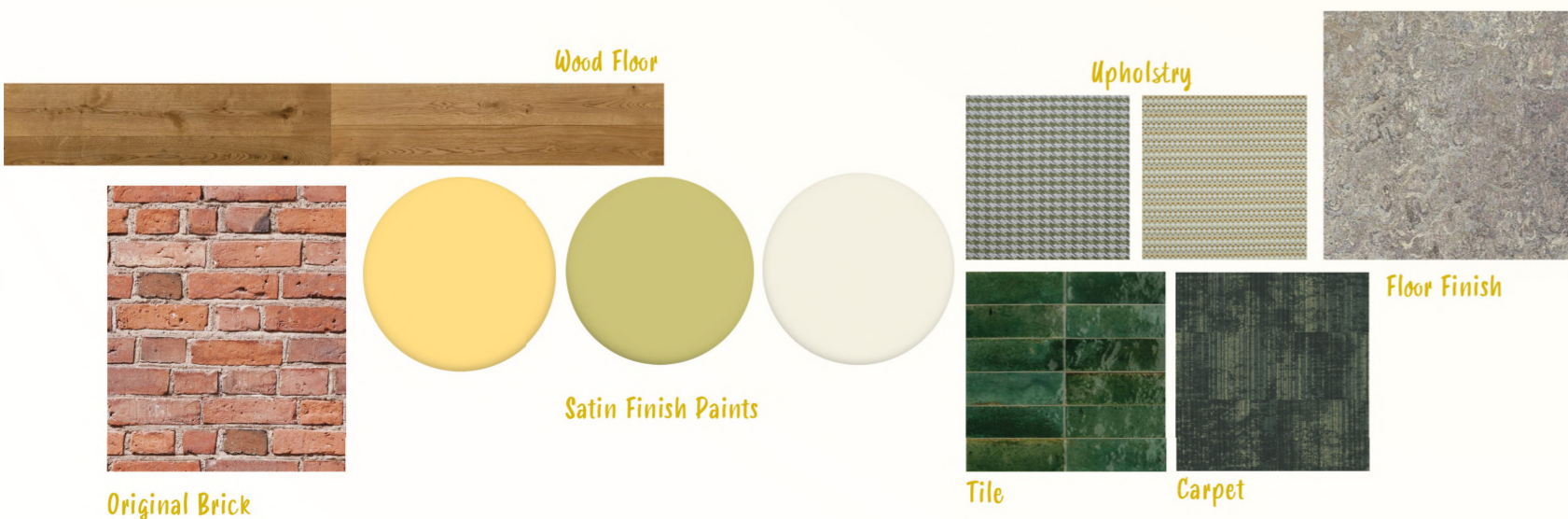
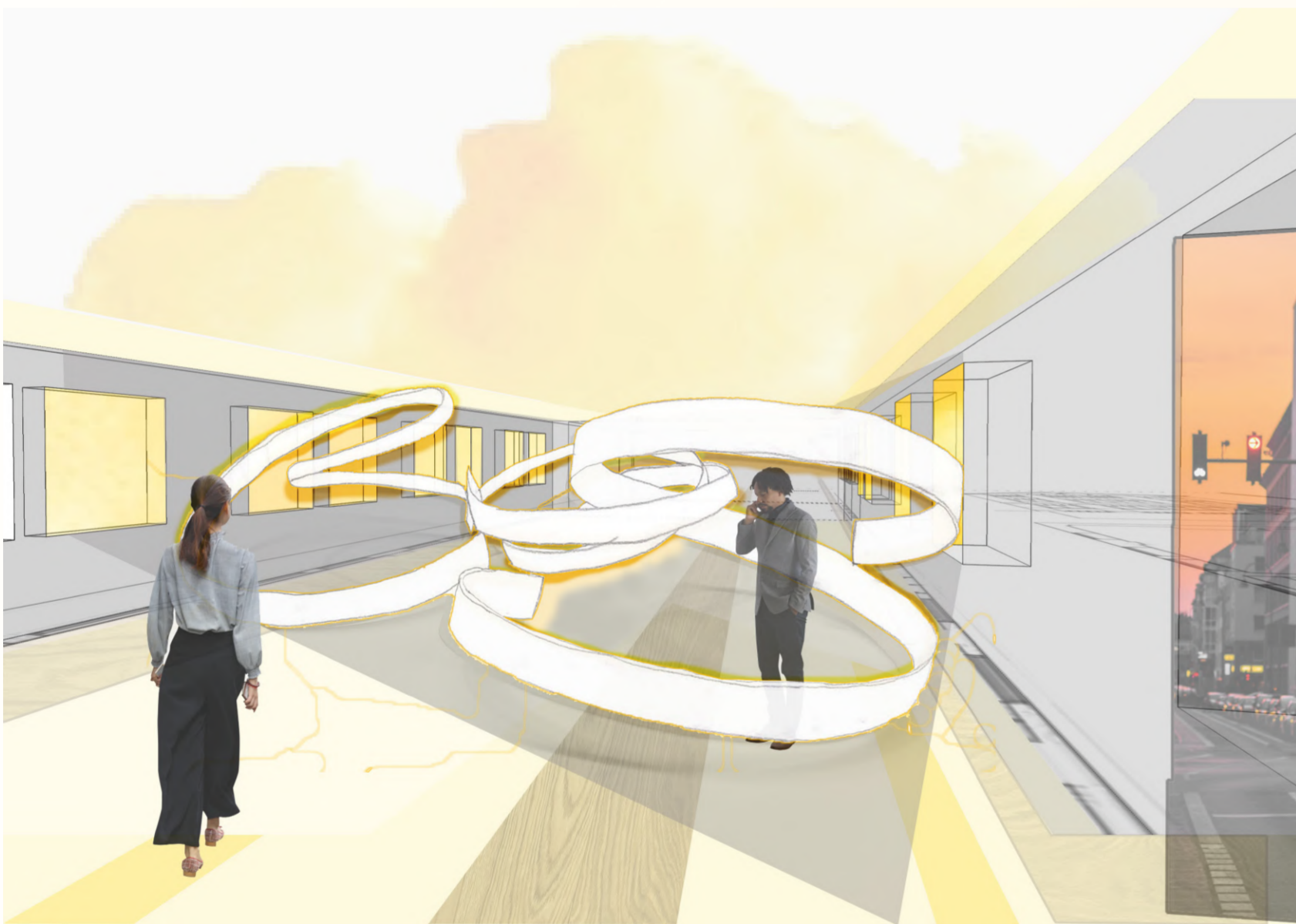
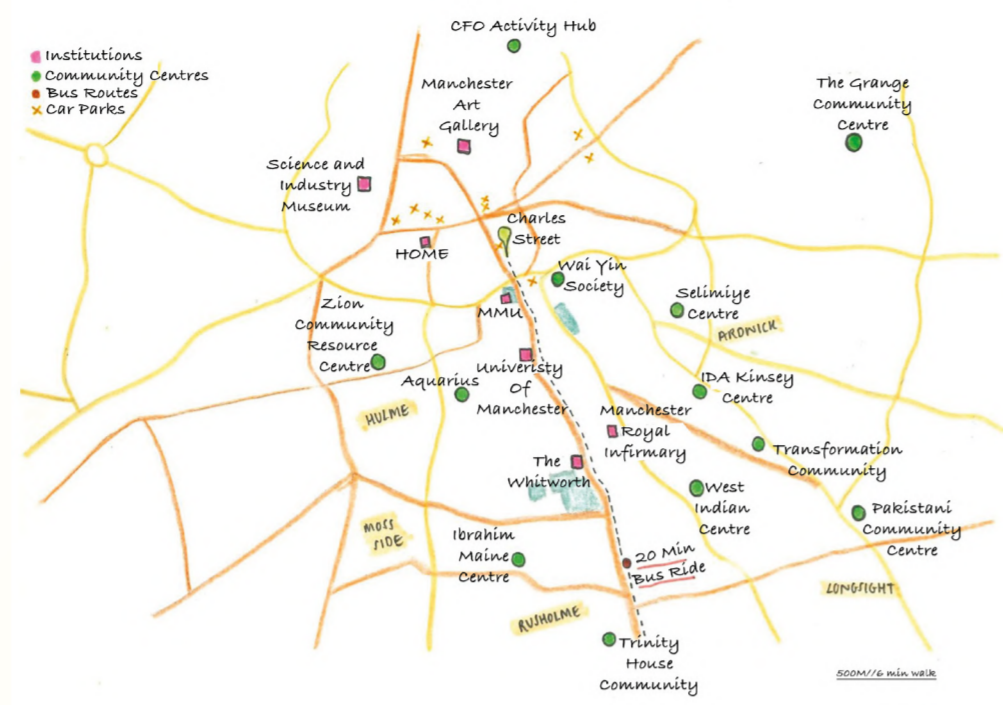
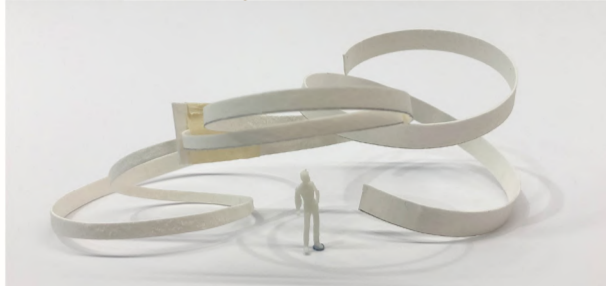
To bring together, combine, and interlink in an empowering way.

Alleviating:

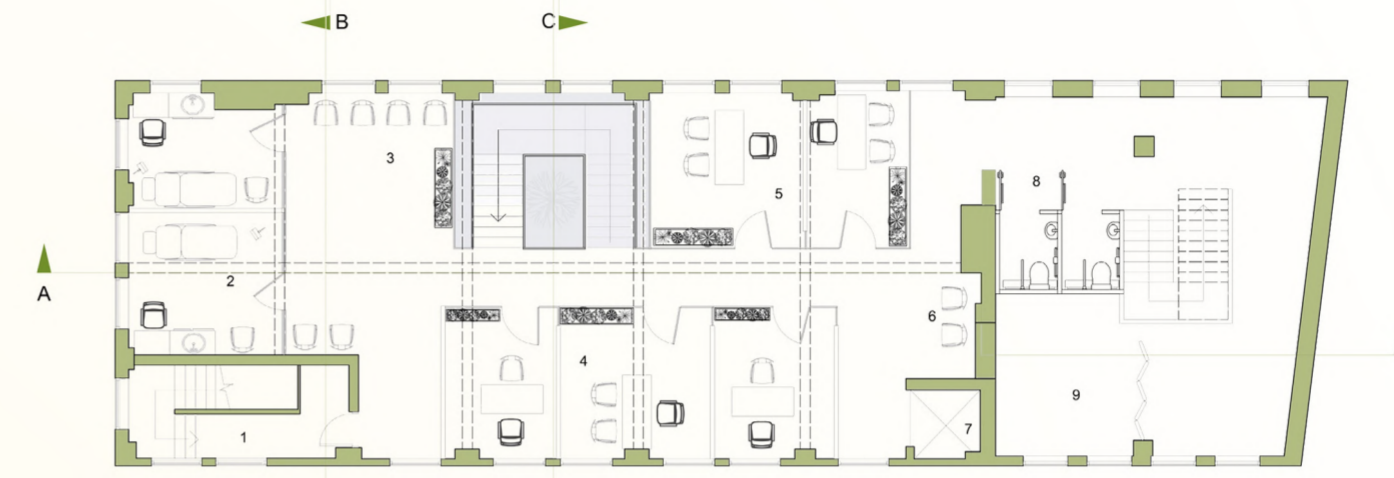
To make easier to endure; lessen; lighten-pain/responsibility.

Nurturing:

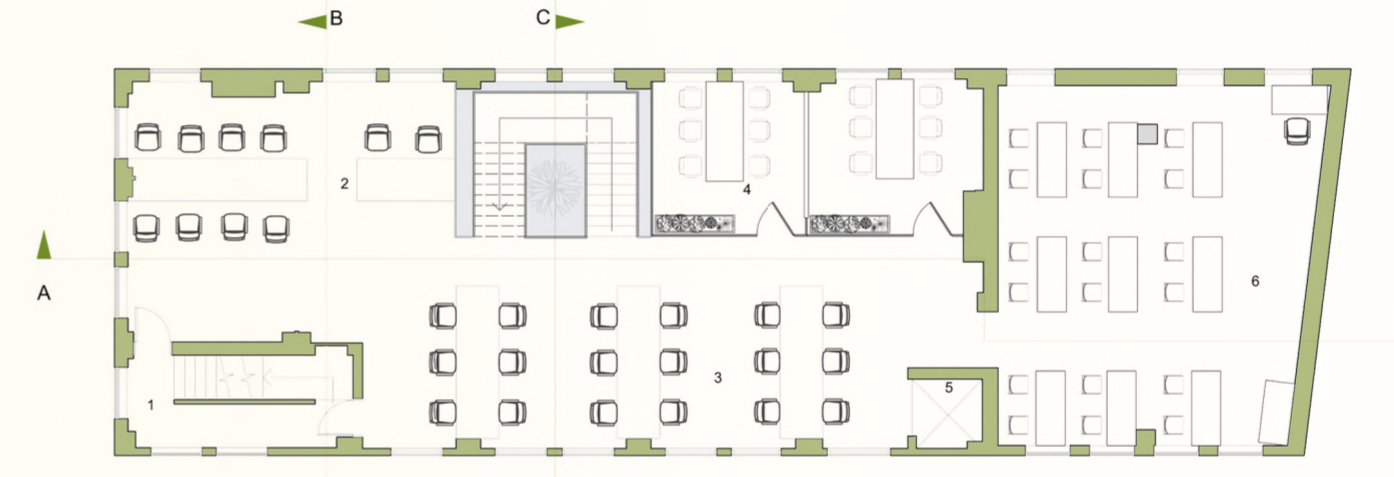
To provide comfort/ protection/support through experience, environment, interaction



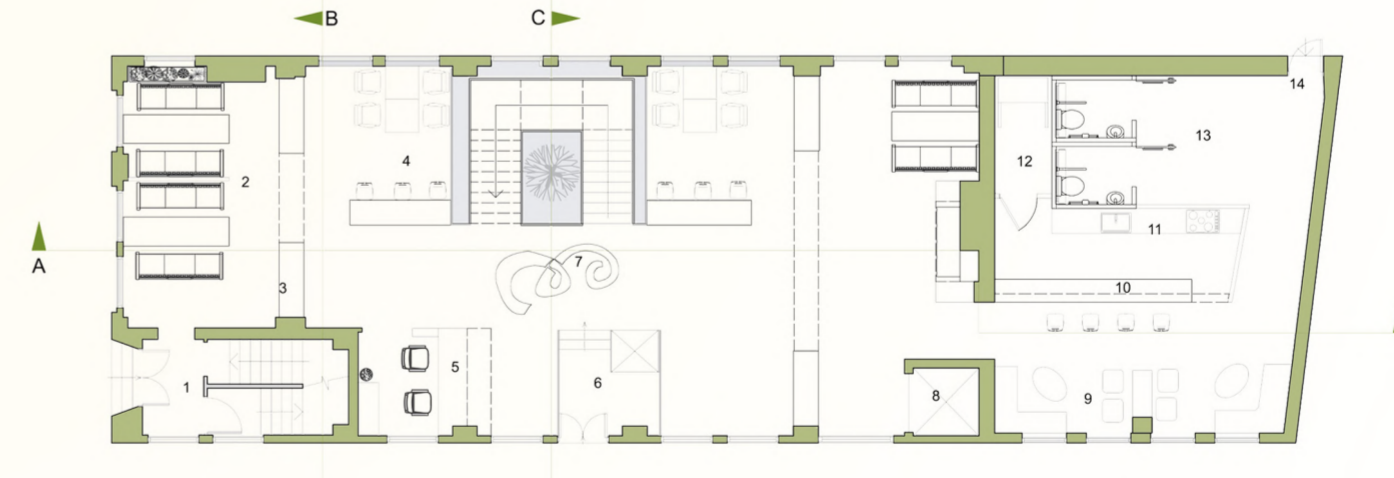
Level 5
Roof Terrace



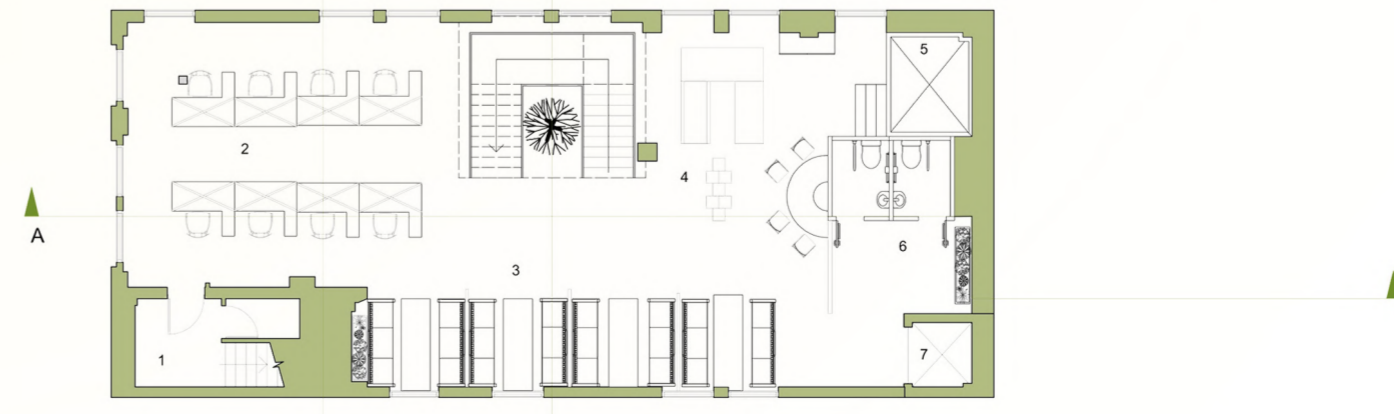
Level 4
Wellbeing/Finance Service
Prayer Space



Level 3
Study Tables
Private Study Rooms
Classroom/Workshop Space



Level 1
Cafe/Library
Book cases
Main Welcome Area



Level 0
Market Stalls
Seating booths
Kids play area

Front Section Visual



Ground Floor Visual-
 The library will be a casual setting that is welcoming to anybody. The books will be donated and purchased with donations. This will create a more accessible library where people don't feel intimidated or out of place. The food from the cafe can also be eaten in the library areas of the ground floor.

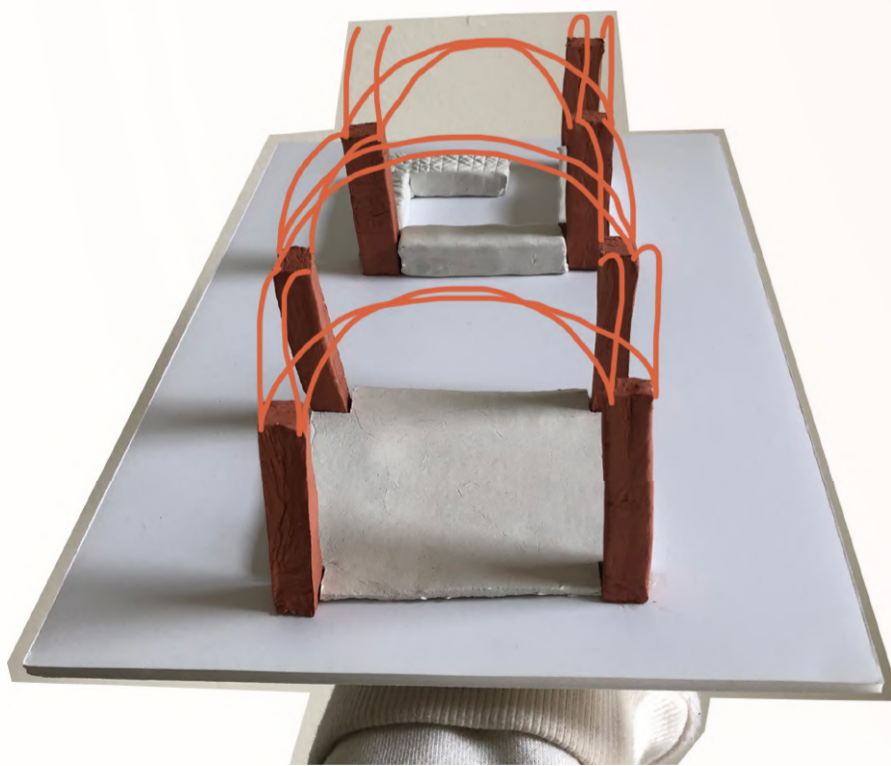


Right Facing Sections

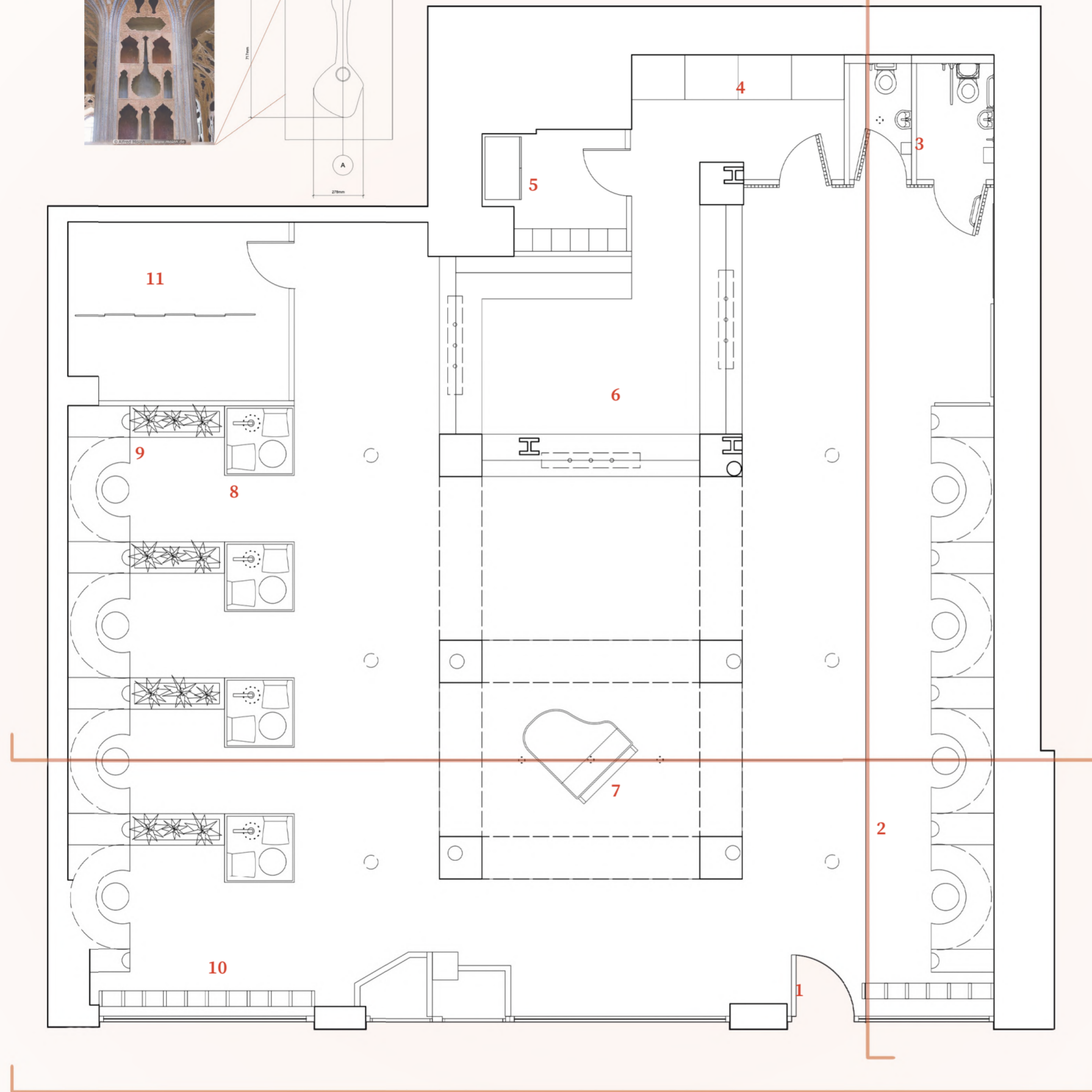
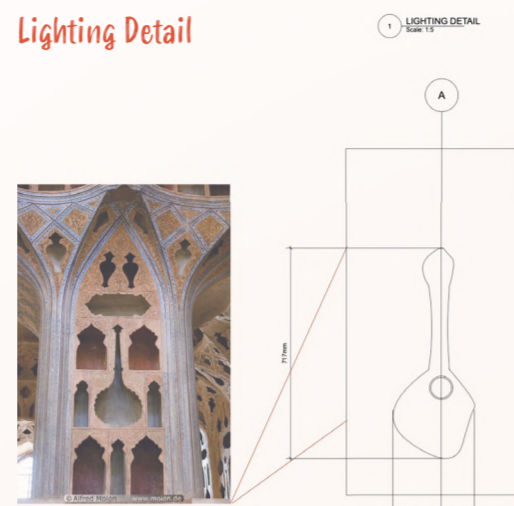


4th Floor Visual-
 The wellbeing and health services will be private and secure but still let through light and a sense of openness to create a calming atmosphere.

CONCEPT + PROCESS



Lighting Detail



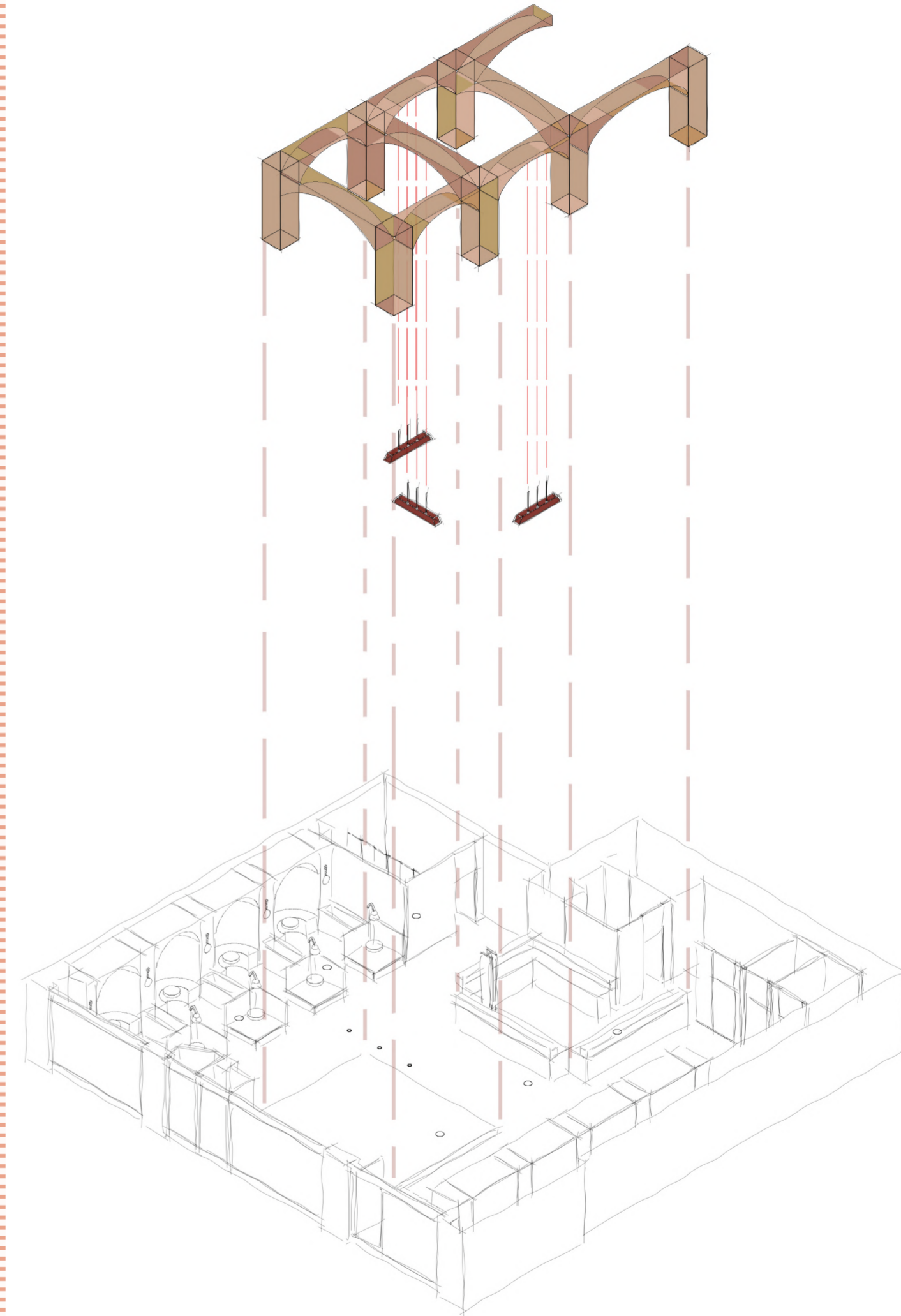
Floor Plan

- 1- Entrance
- 2-Booth Seating
- 3-Toilets
- 4-Storage Cabinets

- 5-Staff Lockers/Fridge
- 6-Bar and Counter
- 7-Stage and Piano
- 8-Seating Units

- 9-Planters
- 10-Window Display Shelves
- 11-Prayer Space

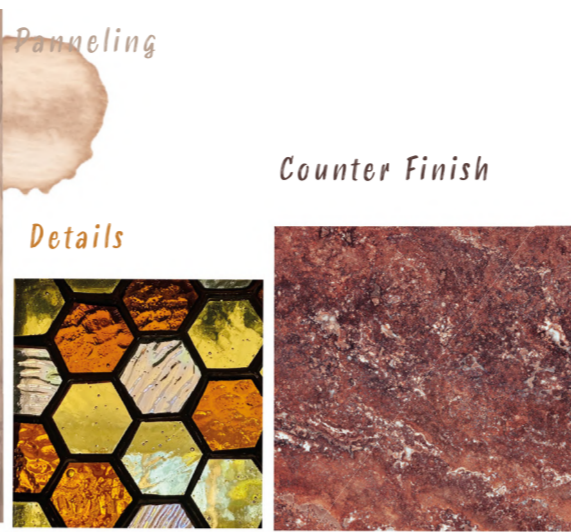
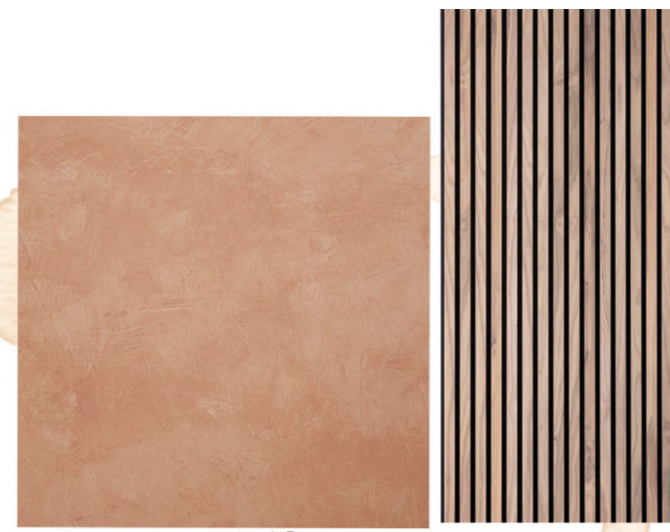
Axo Visual



Showing the layers of the design, arches over the lighting, which hangs above the bar.

MATERIALITY

A deep and rich palette, representing the different shades of tea and immersing the individuals in their setting.



Booth seating for groups and people who want to sit and talk to others, and individually seated tables for those seeking solitude but in a communal setting.



View of the bar and performance area and the street setting through the windows, immersing the individuals in an active and present environment.