

THE UNSEEN NETWORK

1 Rolls Crescent
Hulme
Manchester
M15 5JZ

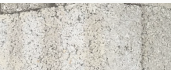


PURPOSE

To address loneliness and overconsumption; encouraging slower and more meaningful forms of engagement, to practice the art of being present.

FUNCTION

A community-driven book swap library, with outdoor reading facilities to connect people with each other as well as their environment.



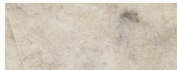
Hemp



Mycelium



Textile Acoustic



Recycled Wool



Moss



The Unseen Network



Garden Centre

The Unseen Network

Kim's Kitchen

MMU Brooks Building

Niamos

CONCEPT

Rooted in the concept of the mycelium network, this design draws inspiration from its role in connecting the natural world. It also reflects the physical qualities of fungi, which parallel the textures and forms of paper books, creating a tangible link between nature and storytelling.

"In healthy **forests**, each **tree** is connected to others via this **network**, enabling trees to share **water and nutrients**." (Holewinski, 2019)

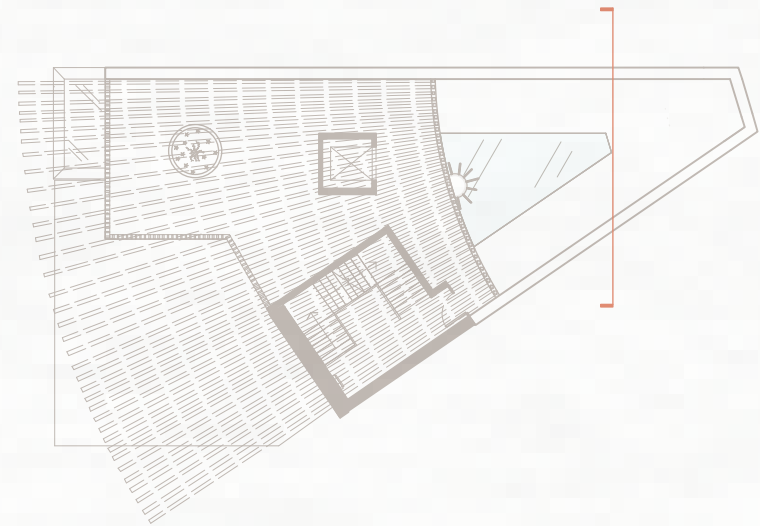
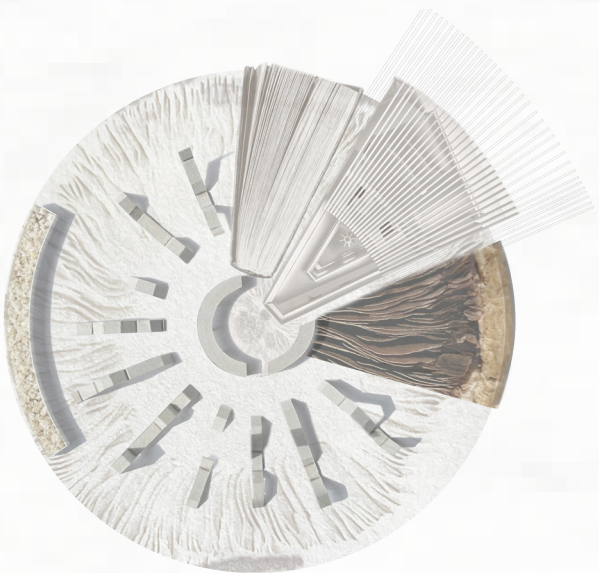
Forest - Community

Tree - Individual

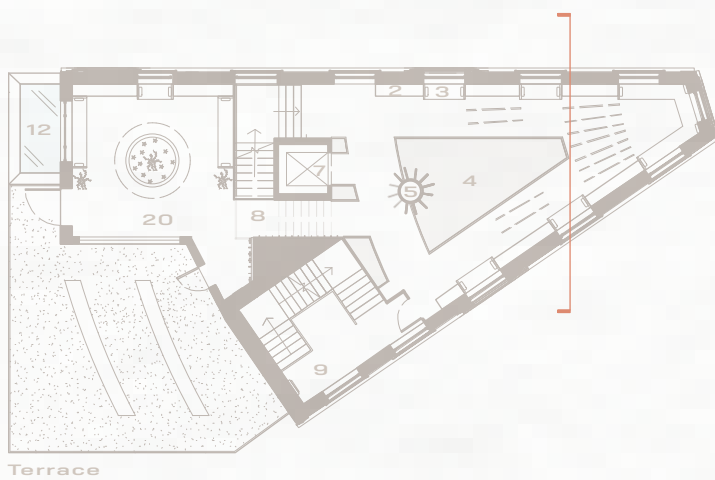
Network - Library

Water and nutrients - Knowledge and experiences

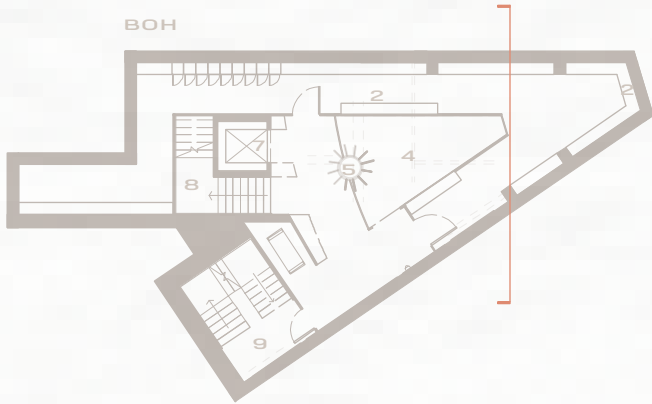
In healthy **communities**, each **individual** is connected to others via this **library**, enabling individuals to share **knowledge and experiences**.



Roof



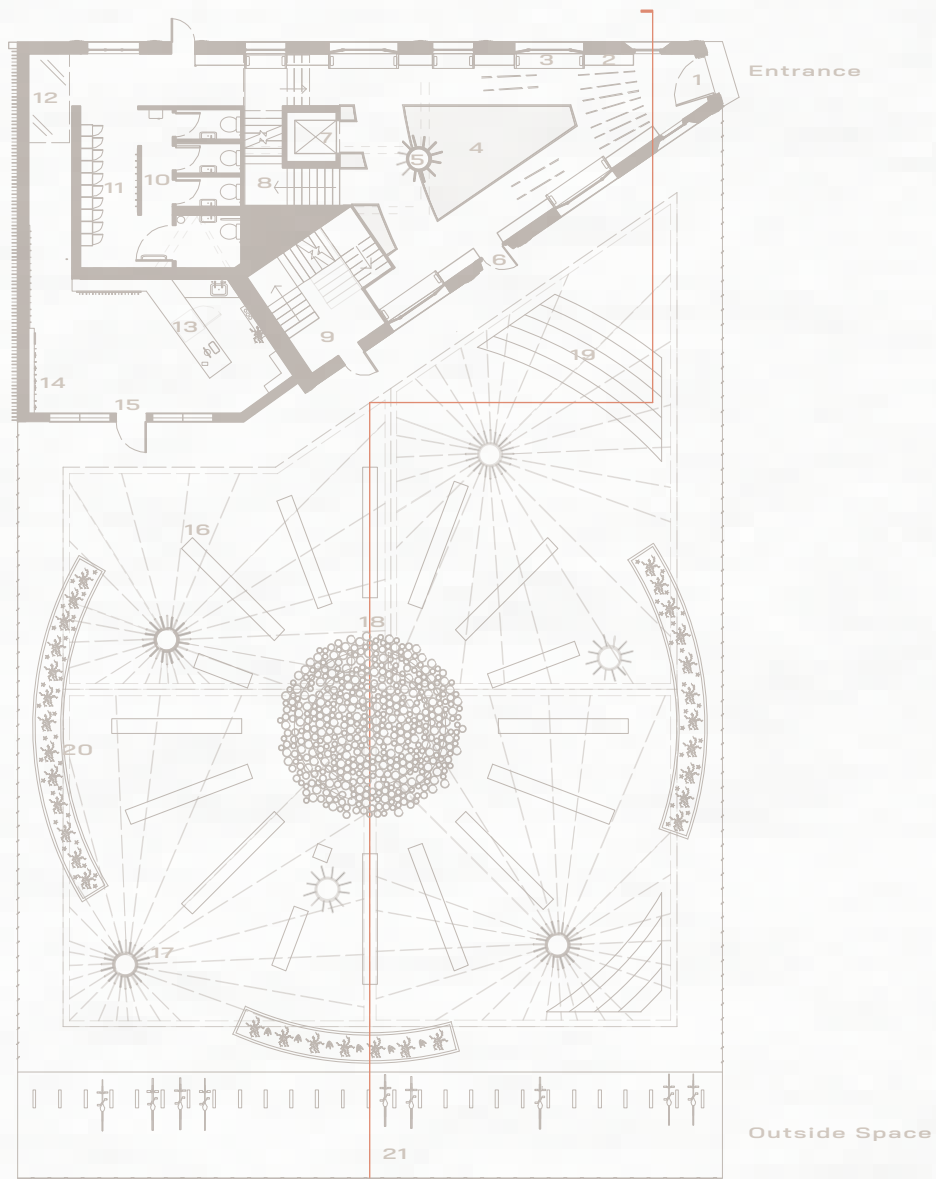
First Floor



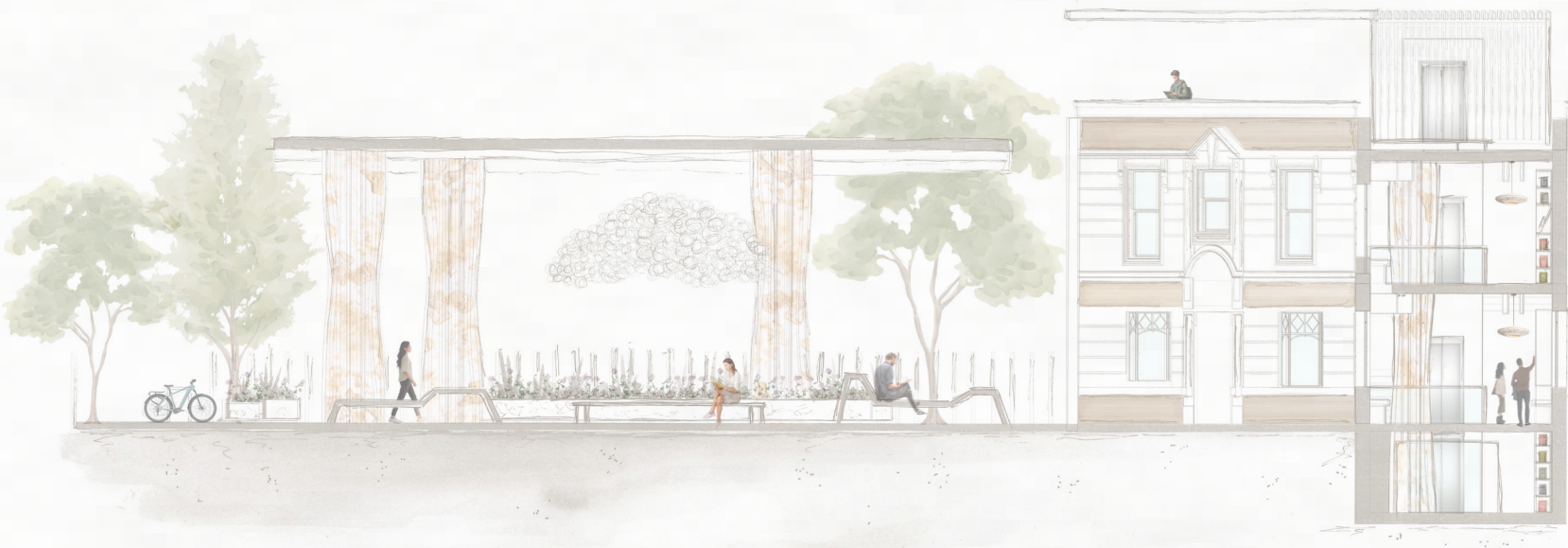
Basement

Key

- 1 - ENTRANCE
- 2 - BOOK SHELVES
- 3 - WINDOW SEATING
- 4 - CENTRAL VOID
- 5 - MYCELIUM FEATURE (ALL FLOORS)
- 6 - FIRE DOOR
- 7 - LIFT
- 8 - FEATURE STAIRS
- 9 - ENCLOSED FIRE STAIRS
- 10 - UNISEX WCs
- 11 - VISITOR STORAGE (LOCKERS & PEGS)
- 12 - SKYLIGHT ABOVE
- 13 - BOOK CHECKOUT & TEA DESK
- 14 - AUDIBLE READING OPTIONS
- 15 - MAIN ENTRANCE TO OUTSIDE SPACE
- 16 - SEATING BENCHES (INDIVIDUAL)
- 17 - MYCELIUM COLUMNS
- 18 - CENTRAL GROUP SEATING
- 19 - AMPHITHEATRE MOSS SEATING
- 20 - PLANTERS
- 21 - BICYCLE PARKING



Ground Floor



A library dedicated to connecting individuals and challenging overconsumption.

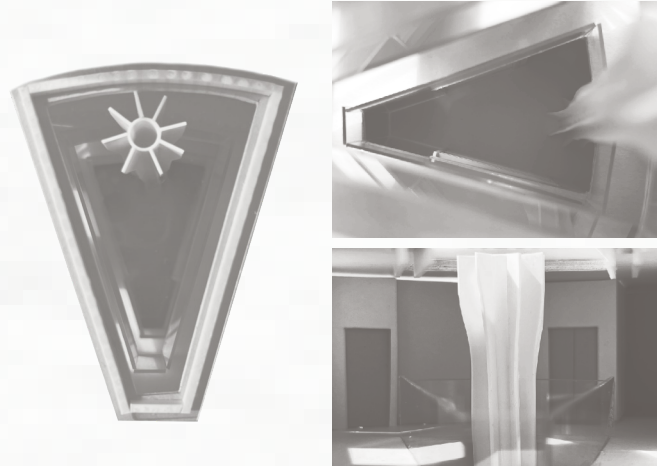
Key design moments...

Design decisions reached through physical experimentation, research and sketching.



A story of structure...

An elevated roof structure, reflecting the form of a book beginning to open.



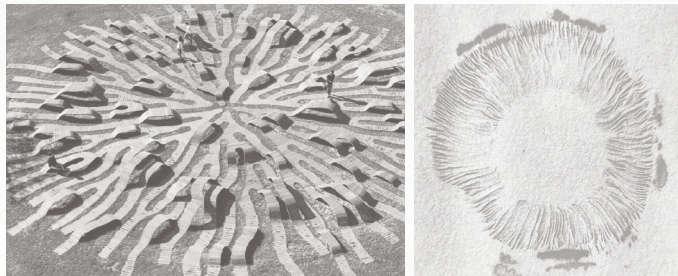
Opening the chapter...

A void running through all floors, shaped like a book beginning to open.



Columns of hidden forms...

Large structural columns, with a repeated fin-like feature.



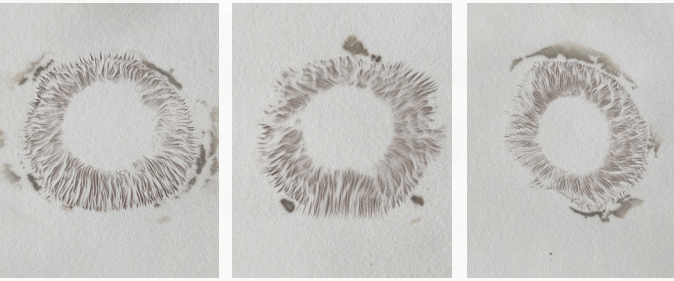
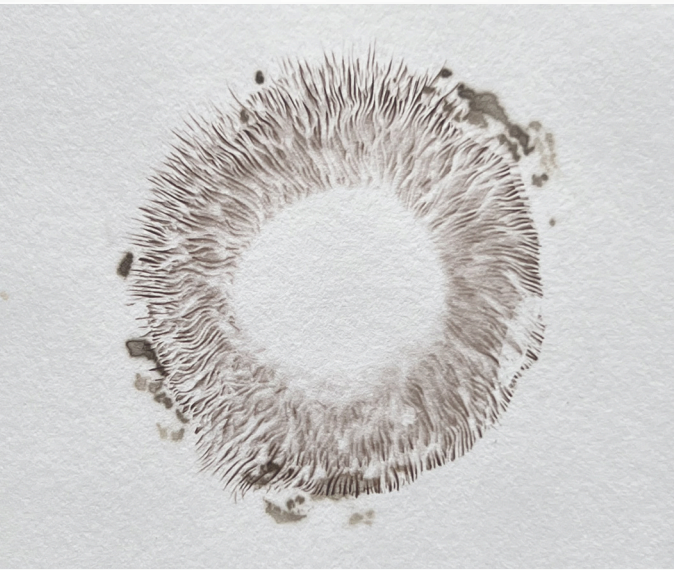
A seated network...

A series of unique benches, providing both individual and group seating.

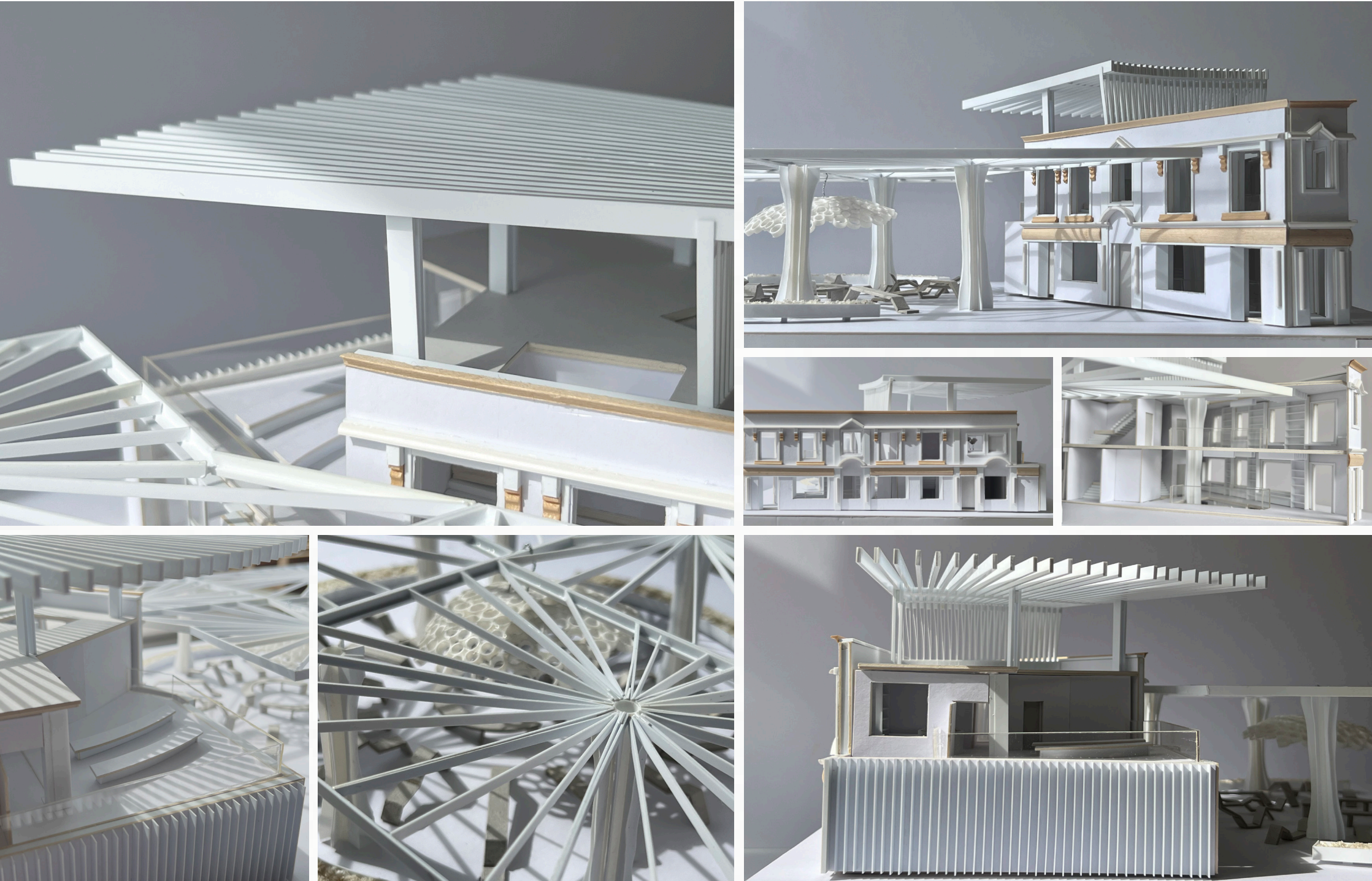
Spore Printing
Hands-on method to understanding fungi forms.



Creating a physical link between mycelium and paper.



Model Outcome



A fully hand crafted model, dedicated to slowing down and consuming consciously.
Made from card, foam board, wood and plastic.

Smaller scale design elements

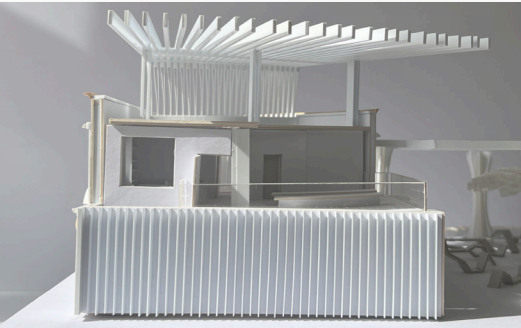


Mirroring the same design principles on a smaller scale creates impact on a more human level.

Structural Joinery

Following book-like form

- Repetition reflecting paper and gills



External Cladding

Paper-like

- Falling in line with overhead structure



Terrace Seating

Follows curve of overhead structure and void

- Subtle prompt to overall design

Materials



ARIA-Plus 12/4 M
Acoustic cladding

Blanc Calcaire
Acoustic material

Welsh Mountain
Sheet material

Haku (0561)
Silicone-coated upholstery

Conceptual Reasoning

Hinting towards the colours and textures found in the mycelium world.
Fibrous materials that reflect that of the unseen network beneath our feet, as well as pops of vibrant red, representing the small mushroom bodies found above the grounds surface.

Visual Communication
Made on Photoshop, using photographs of physical model.



Outside space



Reception & check out area



First Floor Library



Terrace