

IN BETWEEN STOPS: FALLOWFIELD

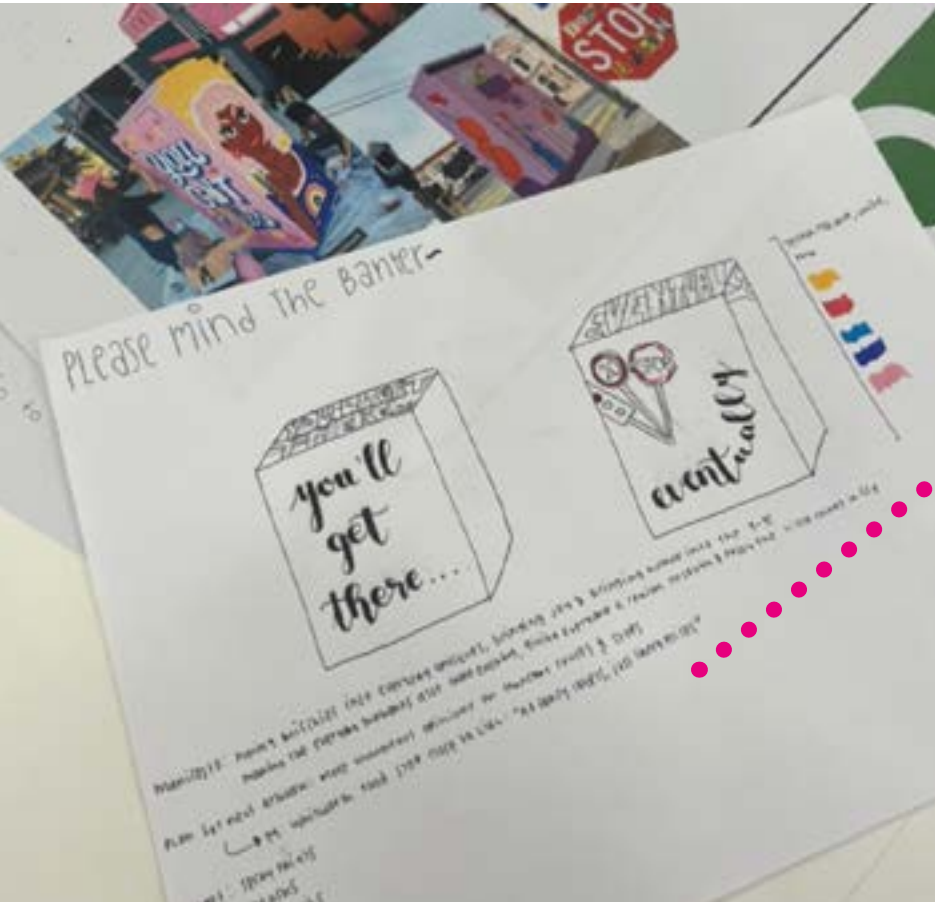
a collaboration between the modernist + interior design



1

DIGGING BENEATH THE SURFACE

The project began with group brainstorming, site visits, and pin-up critiques to explore overlooked parts of Manchester. A guided walk with The Modernist revealed hidden urban narratives, while a workshop with Oskar with a K explored how street art and graphic language could communicate messages tied to place and identity.



Street Art Collab



Oskar with a K Workshop



"the modernist" Walk: Exploring Manchester



Collaborative Pin-ups

The question

What if the city had a voice and was willing to speak on your behalf ?

The brief

You are asked make a creative work that conveys a message that is tied to a specific location within the City of Manchester. Look for stories in places that are overlooked or under-appreciated.

Collaboration

You are encouraged to work in a small team but you can work on your own.

Please note : your final reflective document must show evidence that you have engaged with some aspect of collaboration. There are many ways to collaborate and we will discuss these in the first session. Please speak to a tutor if you are worried about this.

Final outcome

A final artefact at any scale using any processes, materials or media.

A reflective document. This is your most important outcome and must show evidence of on-going engagement with all aspects of the unit : collaboration, research, ideation, making and critical reflection.

Please note : whatever you make, you will need to be able to present images of your finished artefacts in your reflective document. Please don't let this constrain your ambition.

Deadlines

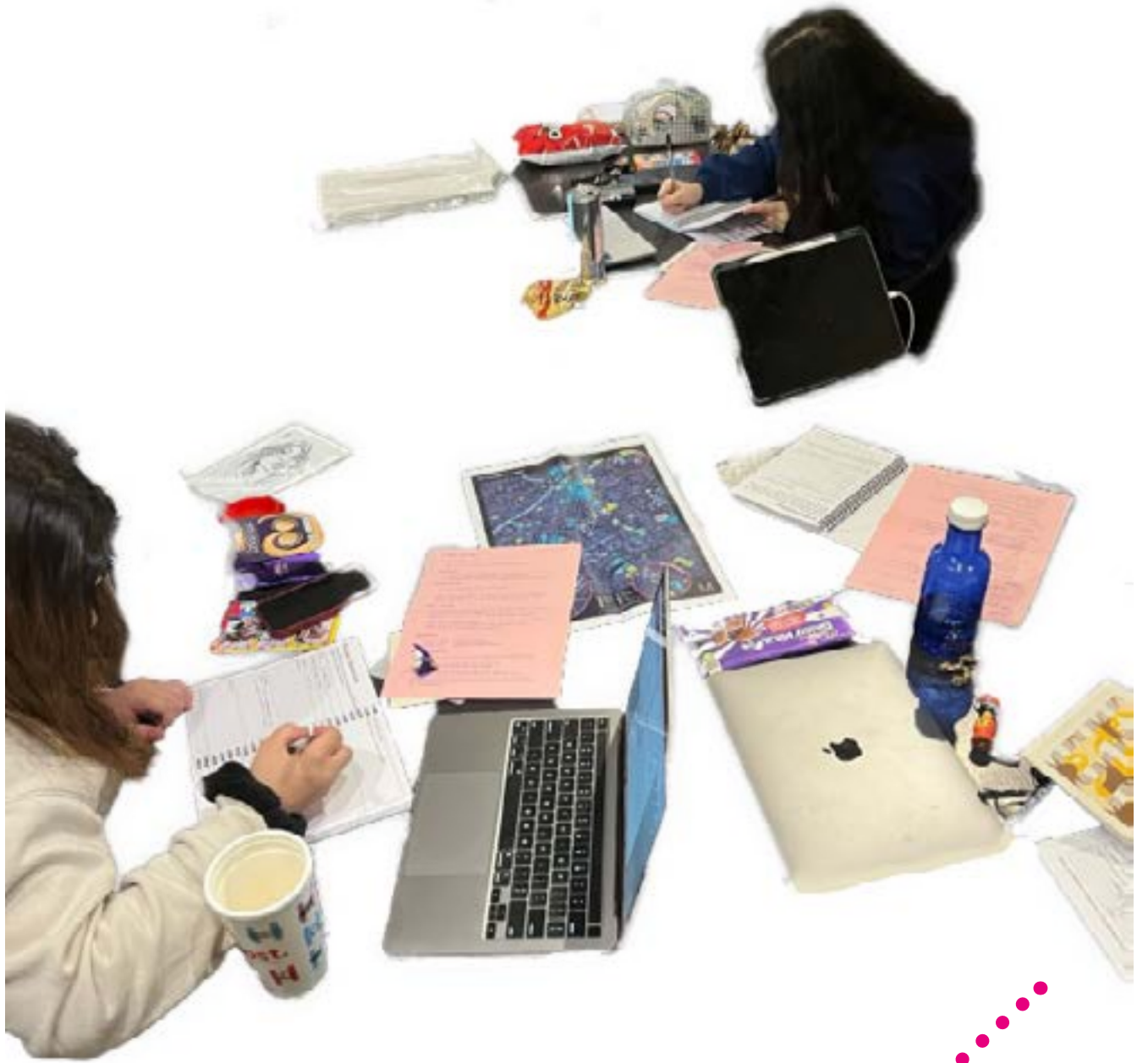
Thursday 5 March	Interim Critique
Thursday 3 April	Open studio exhibition
Tuesday 6 May	Reflective document hand-in

Getting started

There are two different ways you can approach this brief before you decide who you are going to work with and what you're going to make.

1. Decide what you would like "the city" to say
then chose where best to place your message.
2. Choose where you want your message to be located
then decide what you'd like that part of in "the city" to say.

Please note : your final reflective document must show evidence that you have thought about about both of these approaches before you make any final decisions.



Brainstorming Ideas

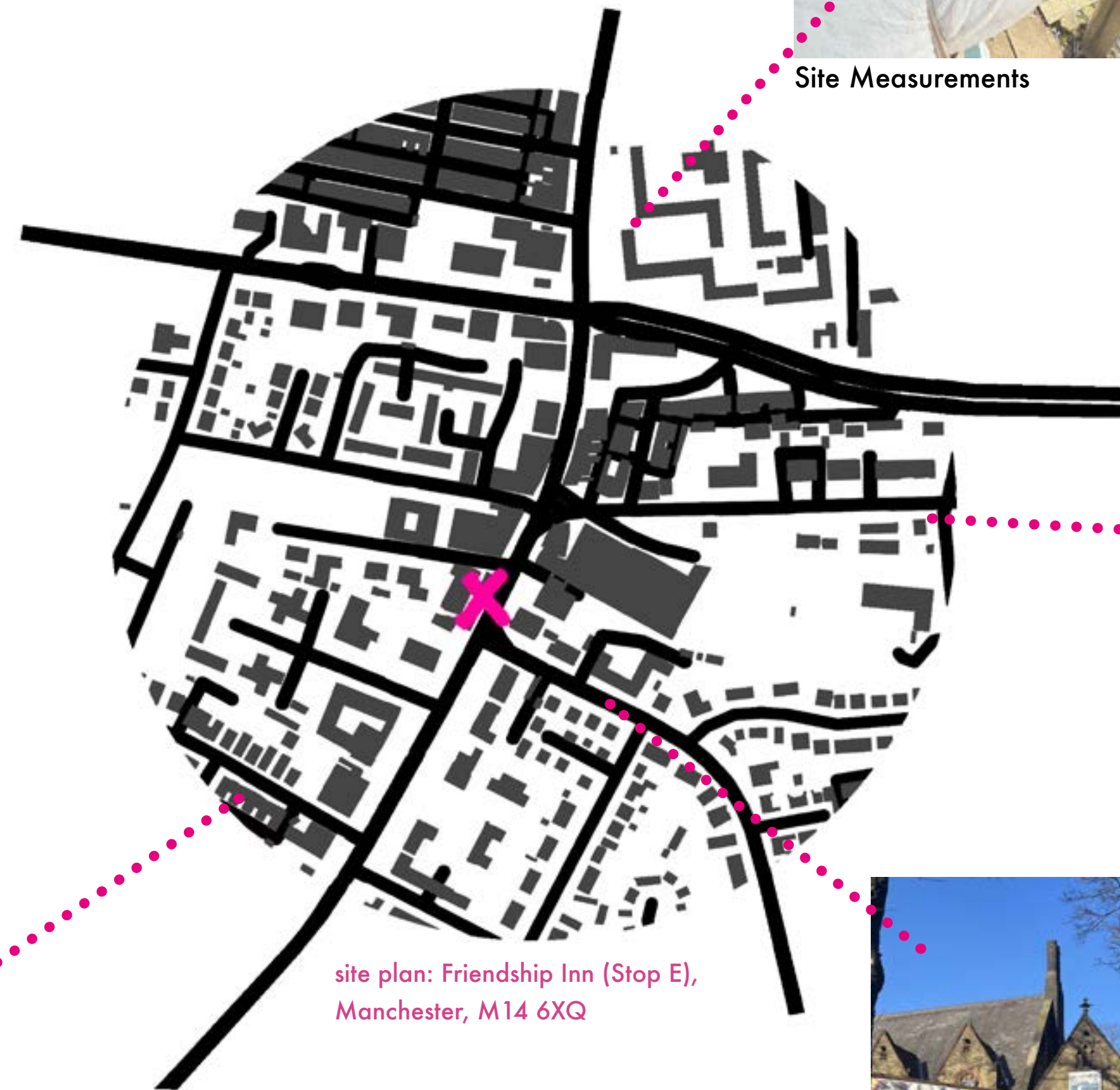
2

ZOOMING IN FALLOWFIELD

Fallowfield, Manchester was selected for its transient student population and shifting urban identity. The group identified the area's bus stop as a key site of movement and change. Through measurements, site mapping, and conversations with residents, they collaboratively built a grounded understanding of the site's spatial and social rhythms.



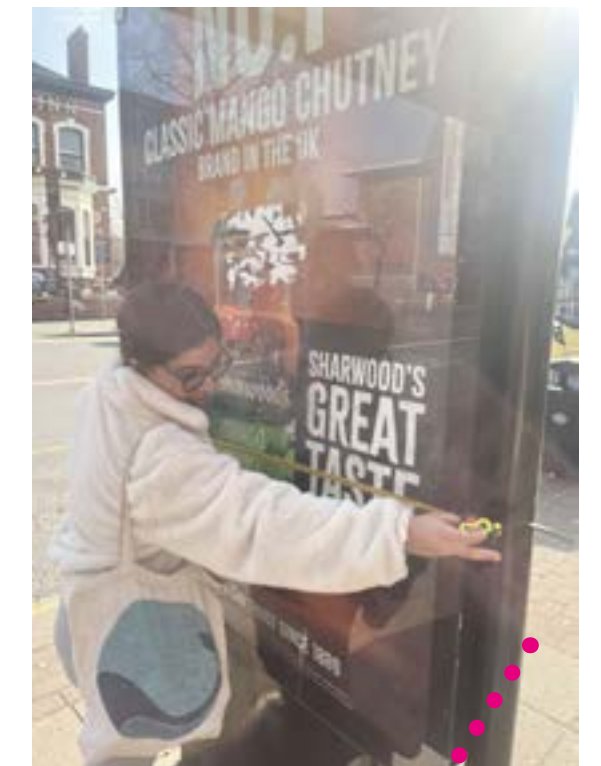
Studying Elevations



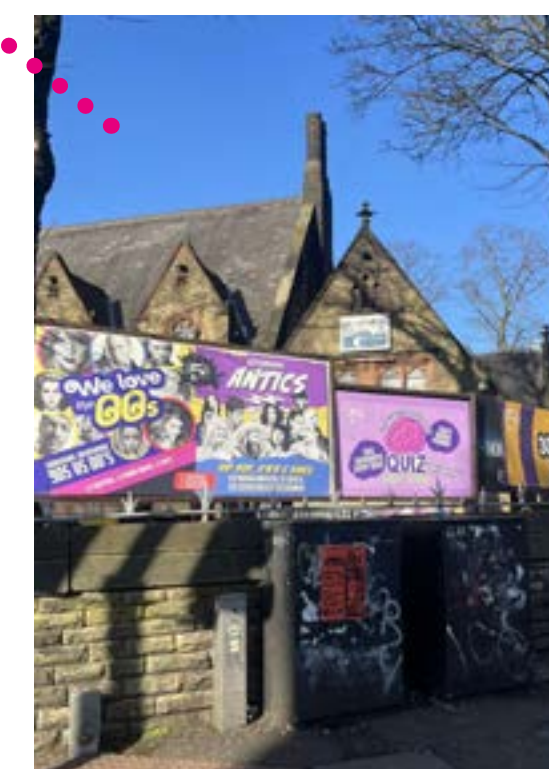
site plan: Friendship Inn (Stop E),
Manchester, M14 6XQ



Site Measurements



Site Measurements



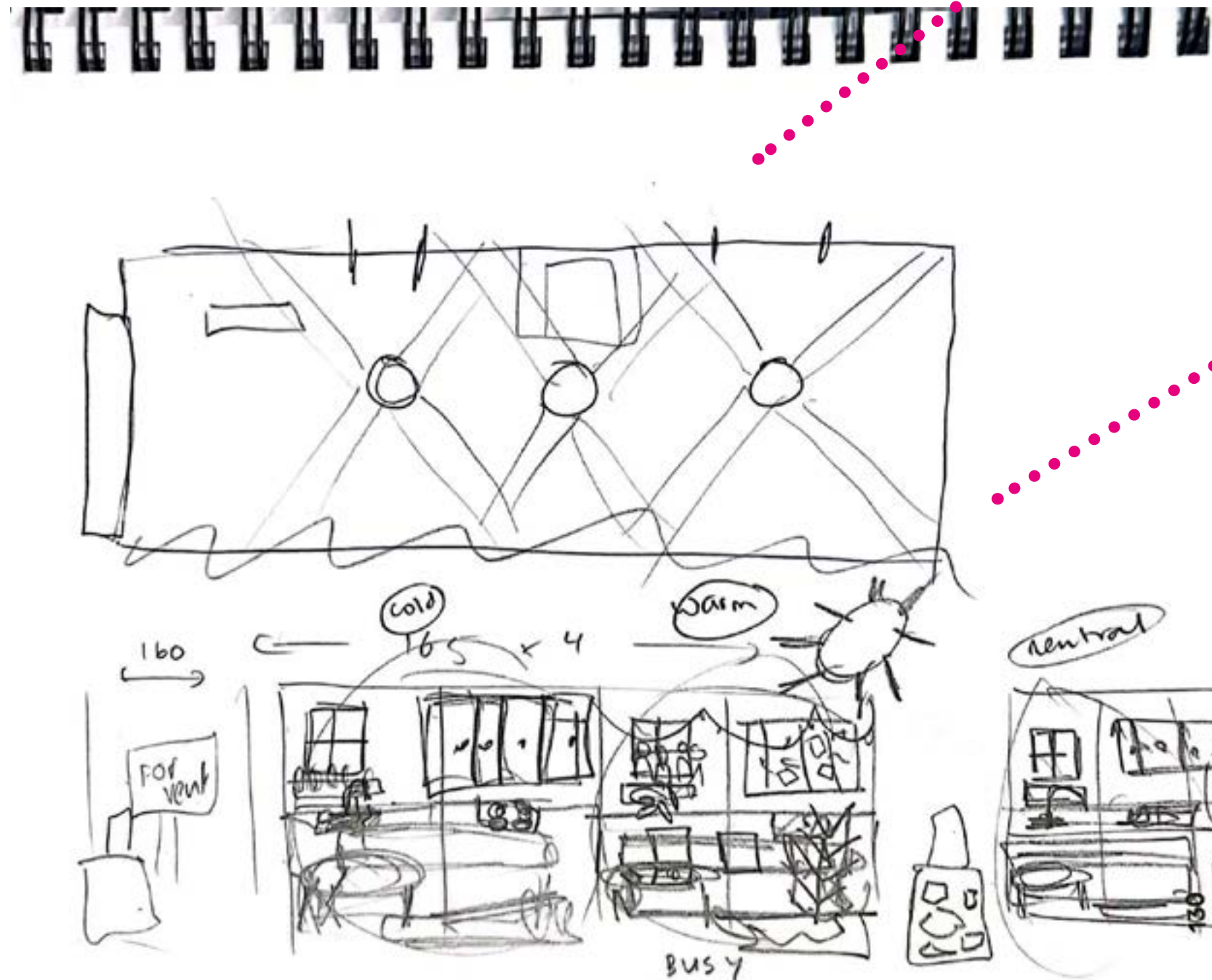
Area Observations



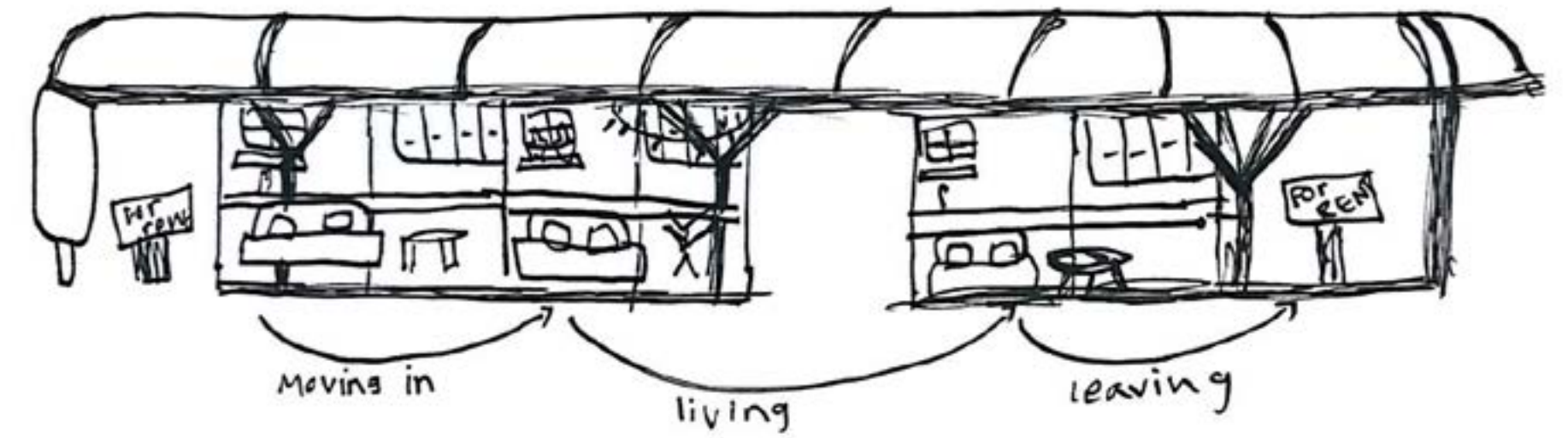
3

BLUE PRINT

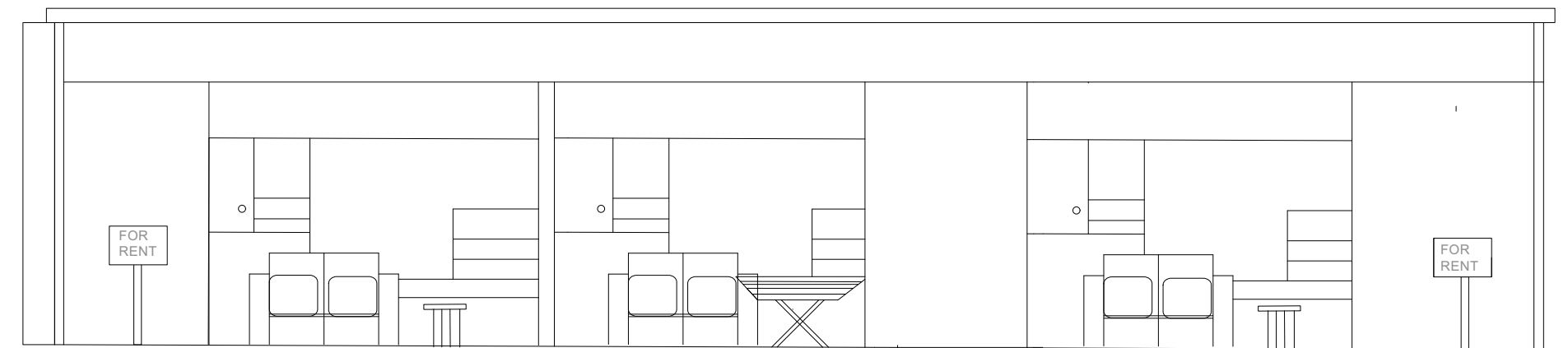
Insights from site analysis were developed into isometric, plan, and section drawings to accurately capture spatial conditions. These drawings helped visualise student transience by mapping how individuals arrive, settle briefly, and move on. This process supported spatial planning and deepened understanding of the site's role in temporary student life.



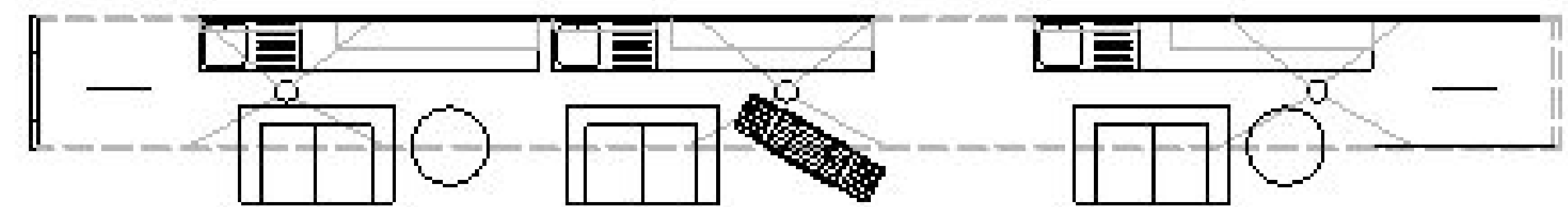
Plan of the initial ideation and concept



Proposed Sketch plan



Proposed Section



Proposed Floor plan



Proposed Isometric drawing

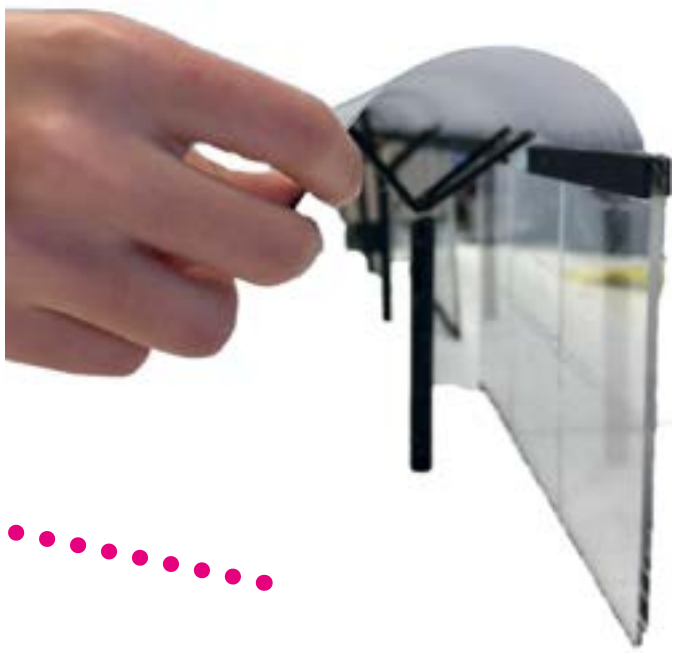
4

CONCRETE IDEAS

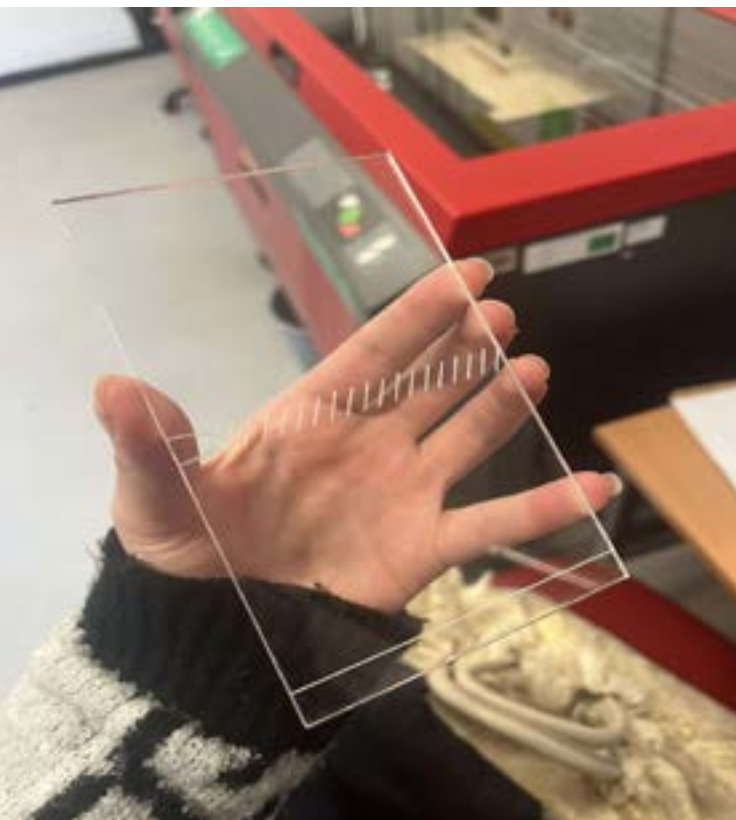
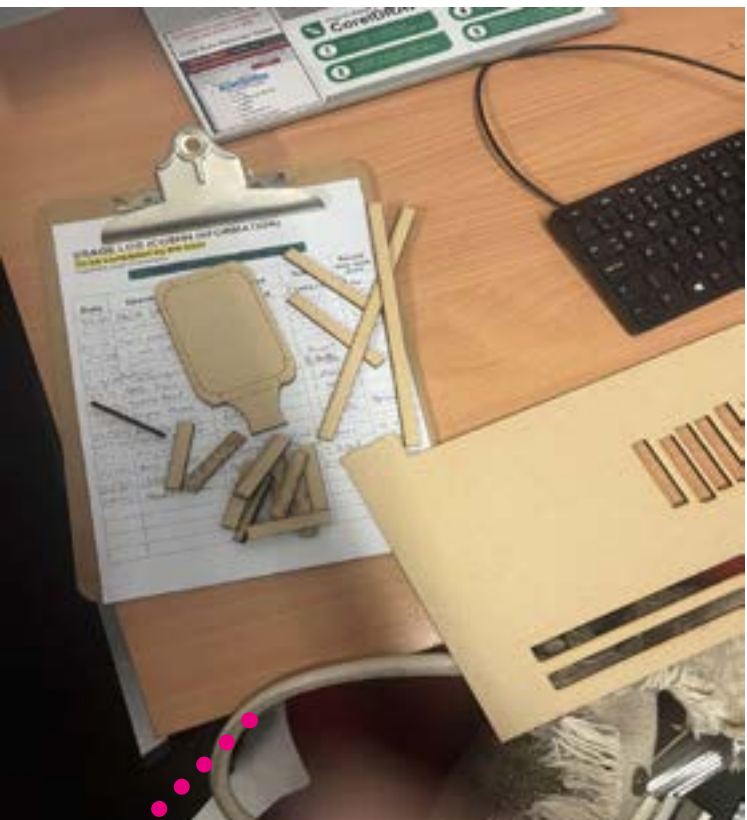
Building on technical drawings, a 1:20 scale model was collaboratively constructed to express the layered realities of student transience. Through shared use of laser cutting, material testing, and assembly methods, the group translated spatial ideas into physical form. The outcome reflected collective authorship and communicated lived experience through design.



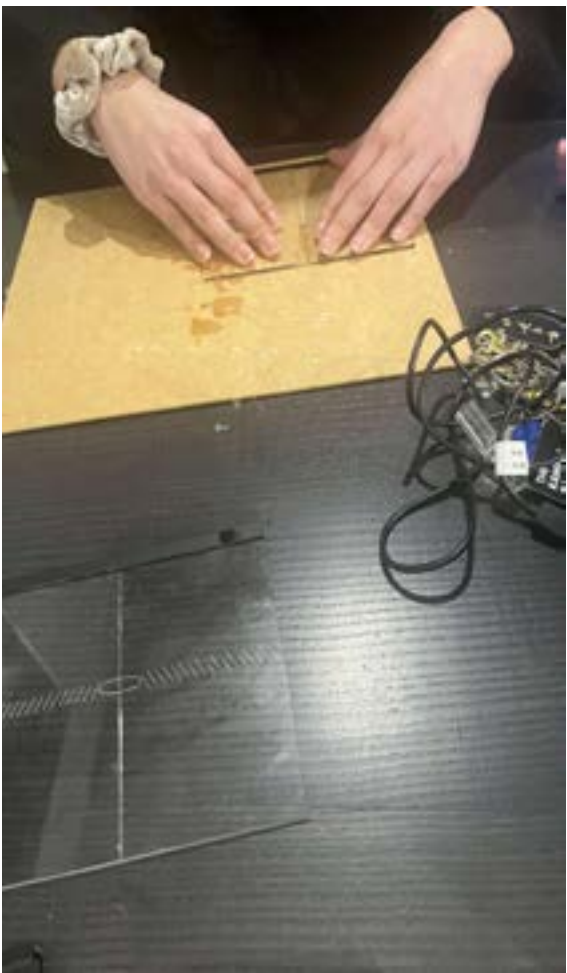
Model Making



Laser Printing



Exhibition



Building & Constructing



Final Model