

# Communal Luxury

## Summary

What if we radically **reimagined the future** possibilities of public transport in Manchester, away from mundane systems of carriage, towards **social and communal systems of movement**? Collaborating with peers, Transport for Greater Manchester and Manchester City Council communicating through the online platform Miro. This cooperative was enriching as we were able to design to meet **TfGM’s sustainability goals for the future**.

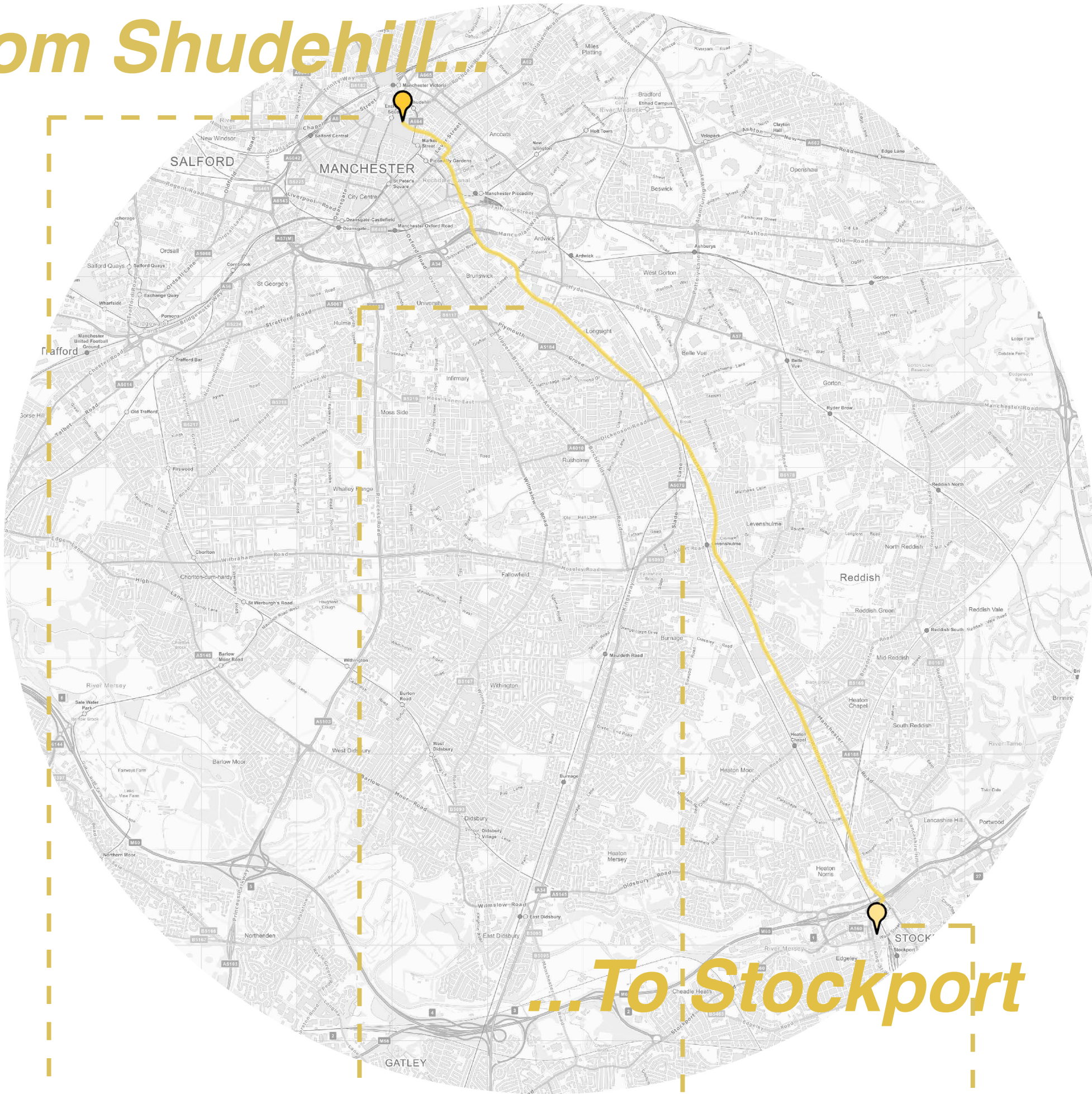


MANCHESTER  
CITY COUNCIL

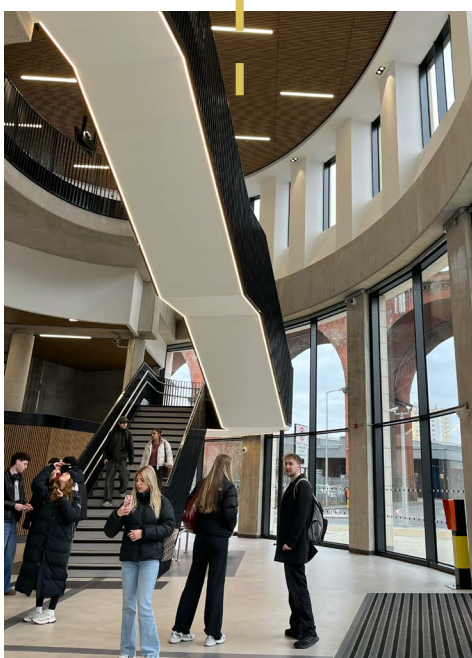


- Team Memebers
- William Buxton Interior Design
  - Evie Burrows Interior Design
  - Lydia Hughes Interior Design
  - Julianna Tecson Interior Design

*From Shudehill...*



*...To Stockport*



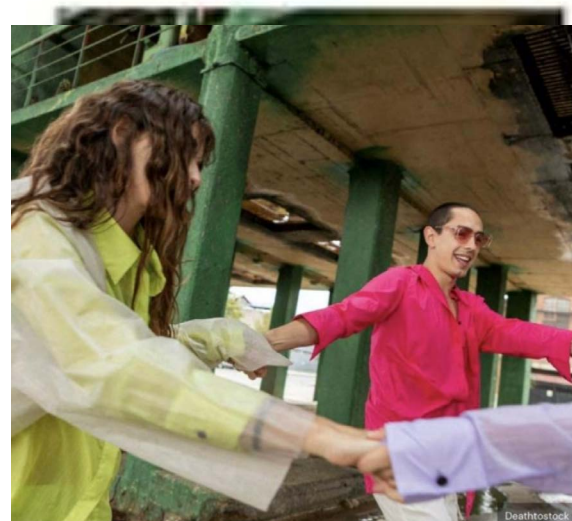


# Group Investigation.

To launch the project, TfGM's Design Team came to speak to us and helped to formulate a clear sense of the **opportunities** and **design directions** for our work. Their main concerns for the future was getting people out of their cars and choosing **public transport** over the luxury of their cars. As well as becoming **Net Zero Carbon by 2038** across Greater Manchester. As a group, meeting with TfGM helped tackle **weaknesses and threats** that can impose on any initial ideas that we had for **Communal Luxury**.

**The Traveller**  
From the WGSN trends forecasts select a consumer type which you think aligns to your Future Vision statement – this will be your TfGM traveller!

Characteristics:

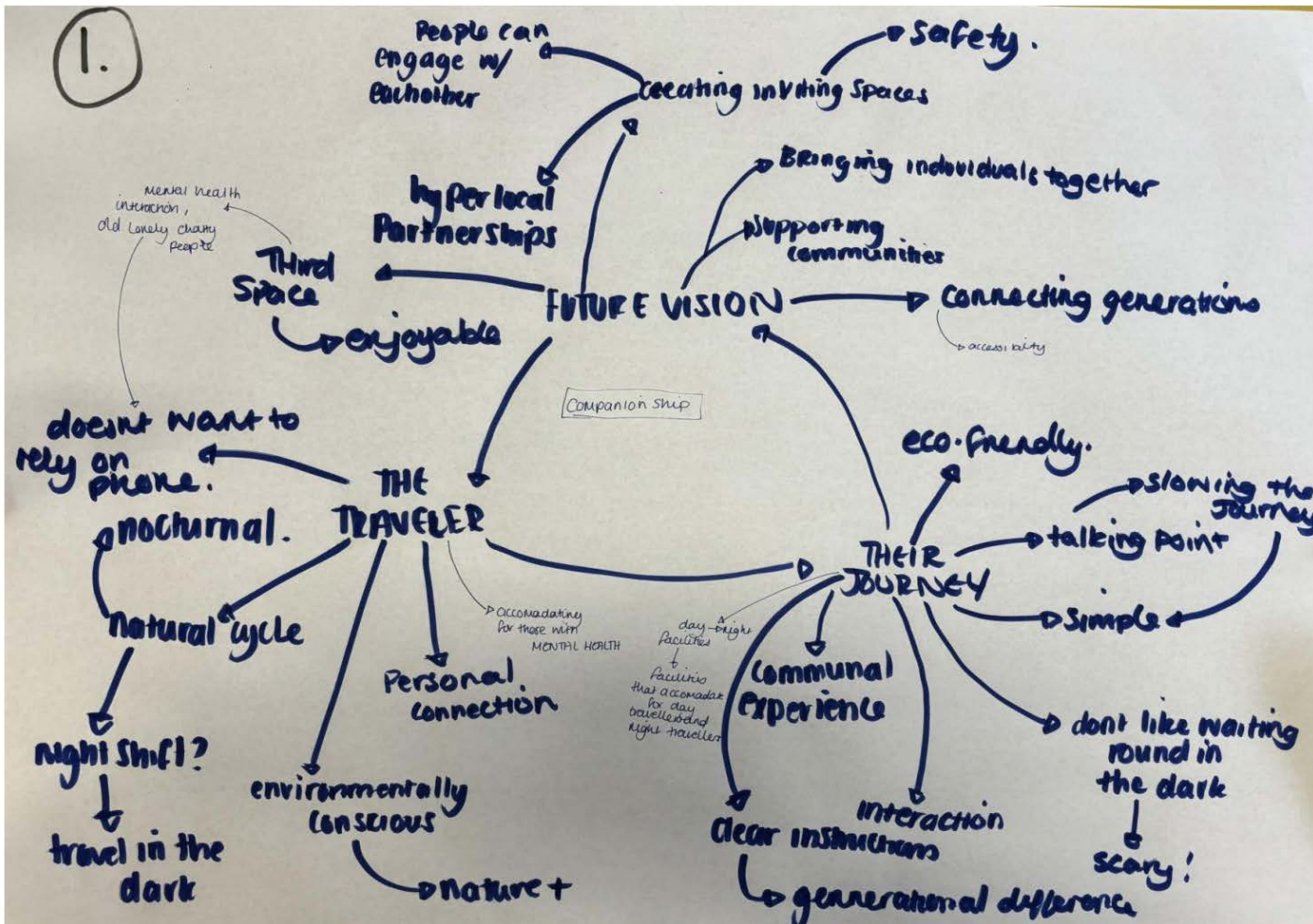


03. The Gleamers

- rely less on technology, more in person
- all ages – inclusive
- Community – coming together
- found families
- celebrating milestones
- design for natural cycles- Seasons
- transport becoming a 121 third space
- Supportive of local businesses

Rob - TfGM Studio Manager 25 Feb, 14:59  
Would love to see this more, rather than bigger named brands occupying spaces

Choosing a traveller that would benefit from our future vision for public transport.



What if transport spaces could support communities and bring all individuals together to create a better society ?

Brainstorming 'What If Statements' to give our designs the same goal and purpose.

- What if public transport areas could become a place for community to come together to help transform transport into social settings and allow others to want to care for each others mental and physical health .
- What if the transport system provided a sense of community that prioritised people connecting and experiencing the transport system as opposed to using it mindlessly
- what if we turned public transport into a technology free space where we go to take a break and detox to simply enjoy the journey?
- What if AI existed within communal transport?
- What if the interchange was a multi use space for not just travel but also a community space that encourages socialisation and cultural appreciation.
- what if interchanges were designed to support

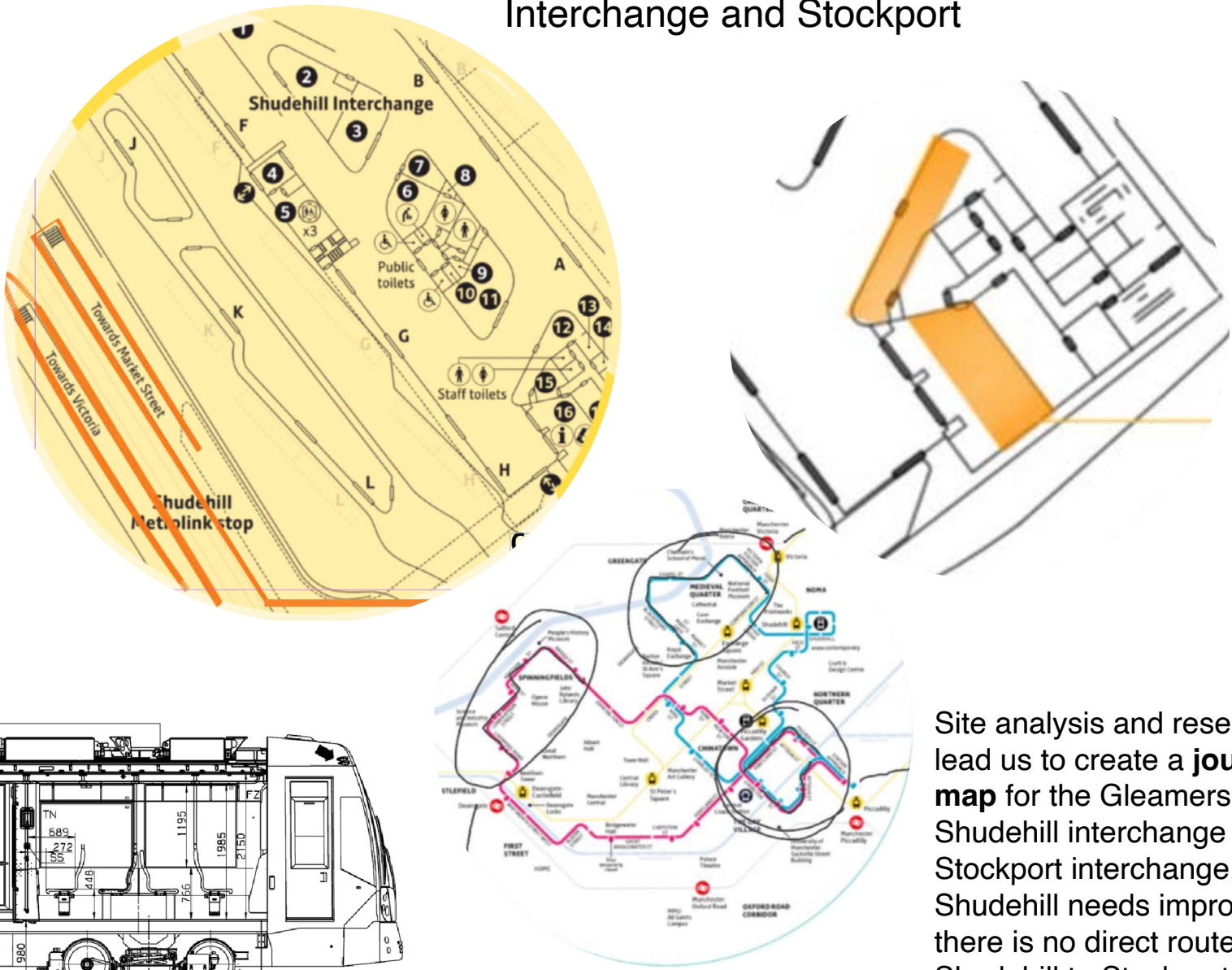
PICCADILLY GARDENS INTERCHANGE SITE VISIT



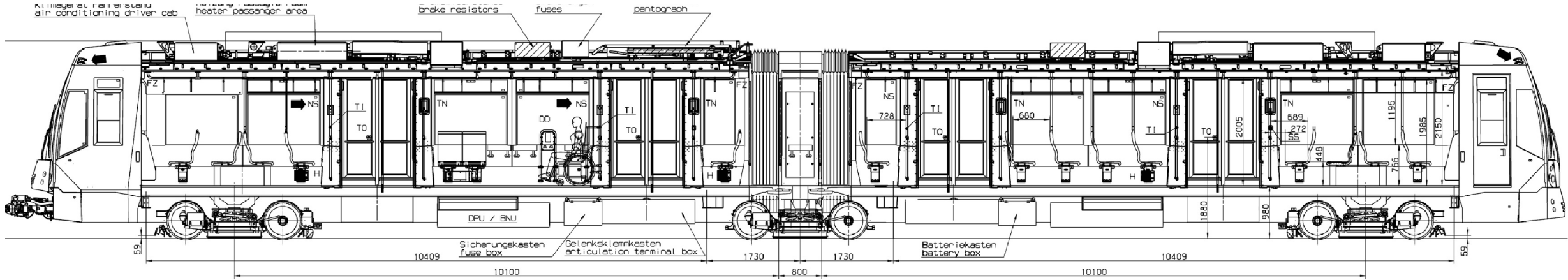
# Creative Discovery

In this phase of the project we focused on creating a **clear narrative**, building **future scenarios** and exploring journey mapping to form the basis of our **creative responses**.  
As a group we did multiple visits to various sites owned by TfGM to explore what was succesful, and what aspects were deterring members of the public from using modes of transport. Visiting the sites in groups was insightful as we all made **different observations** which helped to build our **rationale** for the Gleamer's future transport.

Site analysis of Shudehill Tram stop, Shudehill Interchange and Stockport



Site analysis and research lead us to create a **journey map** for the Gleamers from Shudehill interchange to Stockport interchange, as Shudehill needs improving, there is no direct route from Shudehill to Stockport and Stockport is TfGM's newest interchange.



## JOURNEY MAPPING

Shudehill Interchange

The adjacent island to the main interchange space - feels a bit derelict and unloved

Main circulation - straight path

Seating areas by each automatic door

Plenty of windows yet feels dark at midday

information and ticket desks - doesn't really fit the Bee Network branding (uses a lot of blue)

Random island of a seating area

Big open spaces that could be used for other useful things

Entering from High Street

Only signage to indicate the interchange

Main building of Shudehill Interchange [side entrance]

## STOCKPORT INTERCHANGE

very modern

garden area

open bus parking space

wooden slats are nice because they haven't been overused

Clear signage

main part of interchange

really liked how they built around the existing structures

really liked the playfulness of this lighting

helps give the tunnel some light

very accessible for wheel chair users

areas around steps and ramp were dead space - nothing there

really love this lighting

Bottom of stair case

Love the strip lighting

Trendy wood slats

Cycle path up to top level

love the slats

potential tram path

Clear for cyclists

Flats to above the interchange

Nice stone like path way

different colours for walking and cycling

me and Jules

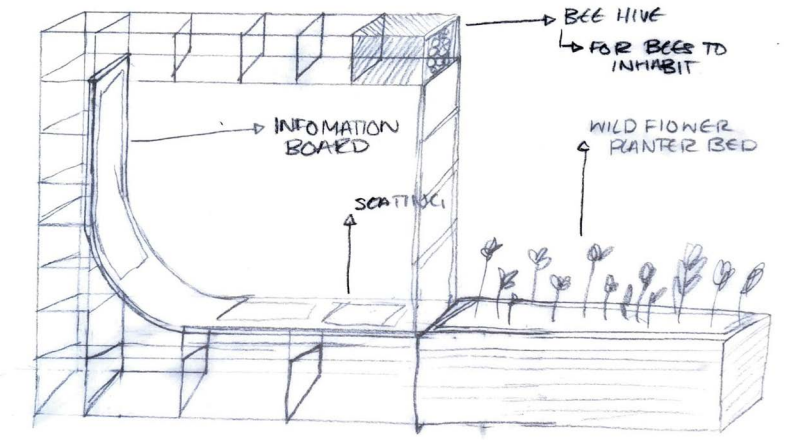
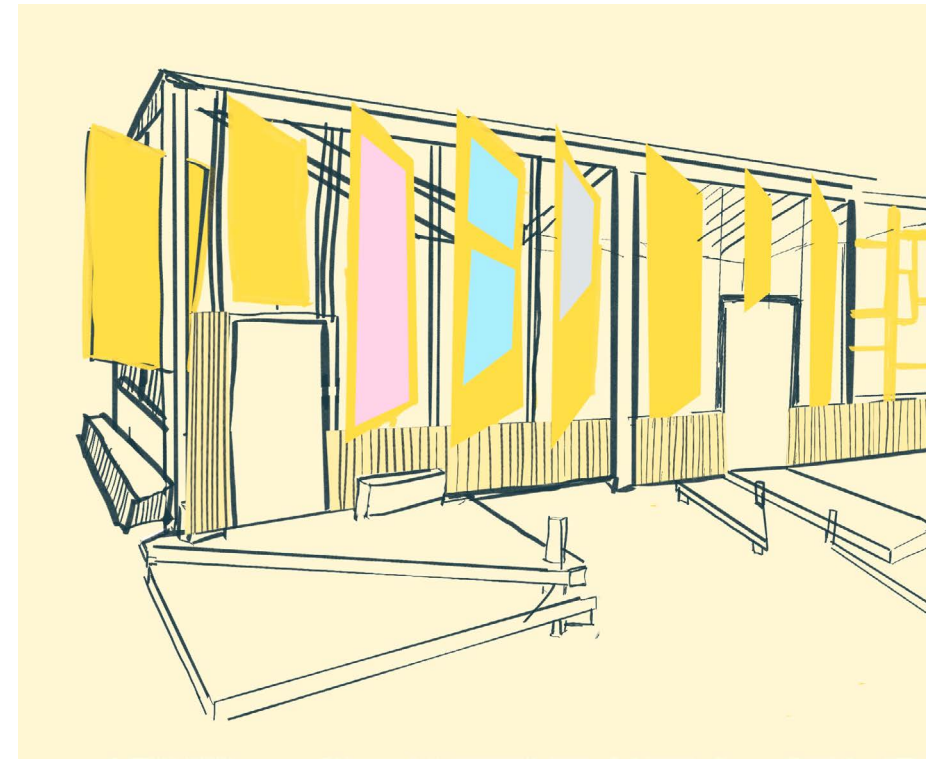
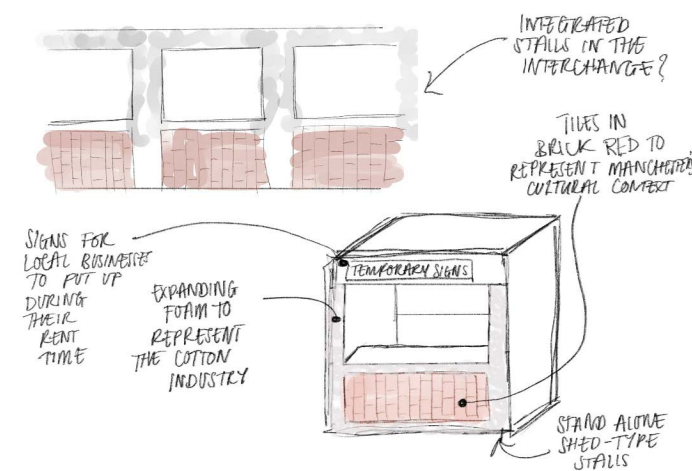
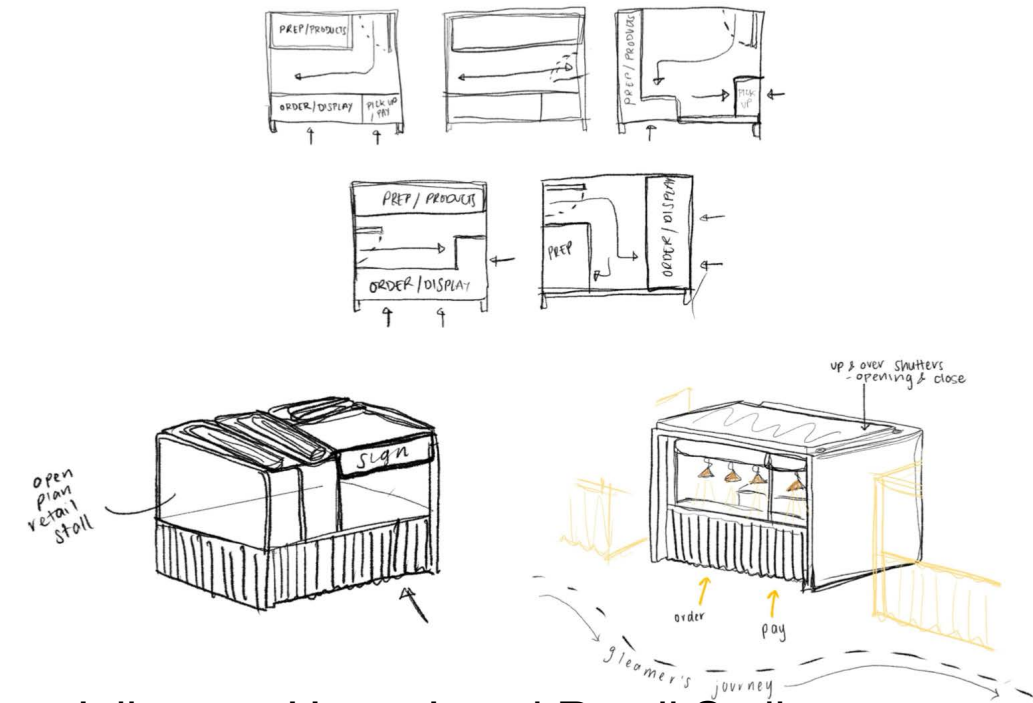


This phase of the project was focused on developing our **group research** into a **design concept**, suitable for TfGM to assess our ideas and collaboration.

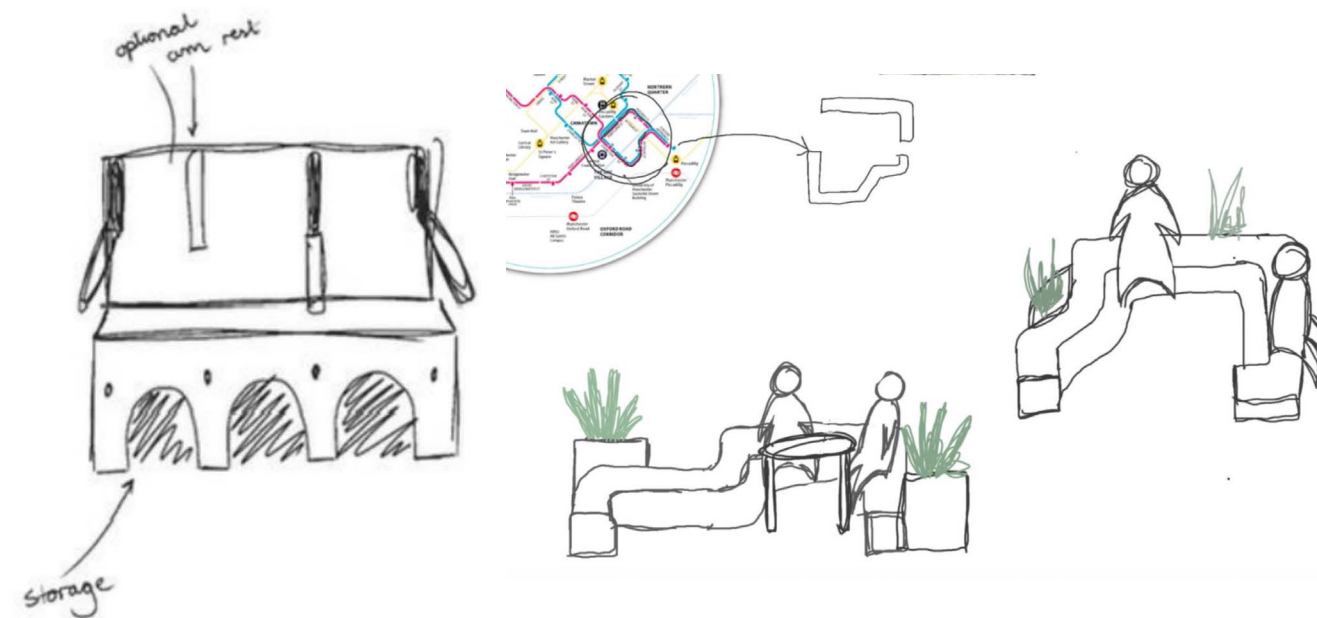
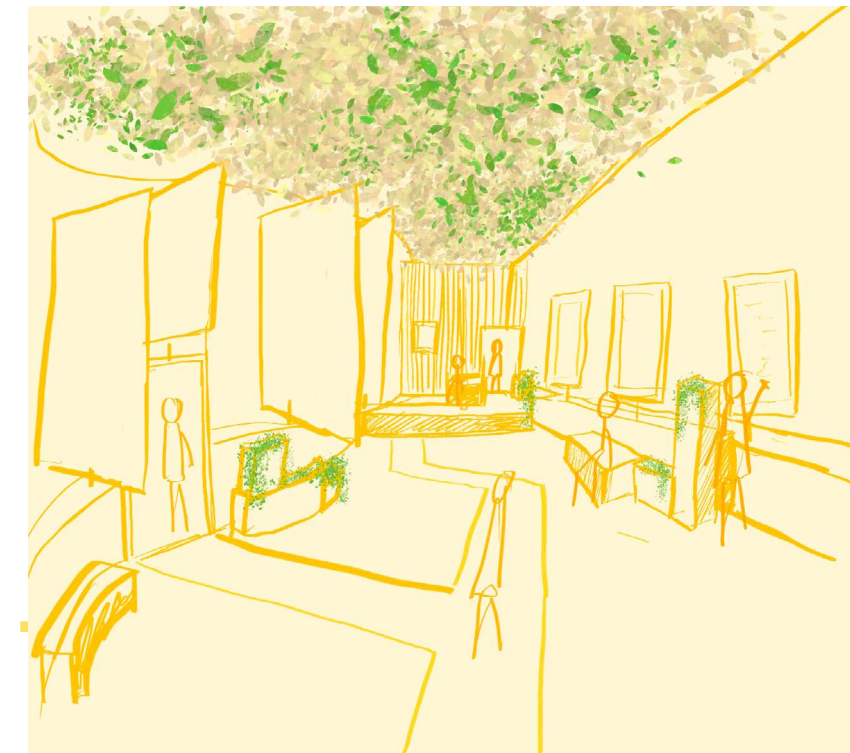
This is where we began doing **individual concept exploration** into what each stage of our **collaborative journey map** needed.

This phase of the project was focused on developing our **group research** into a **design concept**, suitable for TfGM to assess our ideas and collaboration.

This is where we began doing **individual concept exploration** into what each stage of our **collaborative journey map** needed.

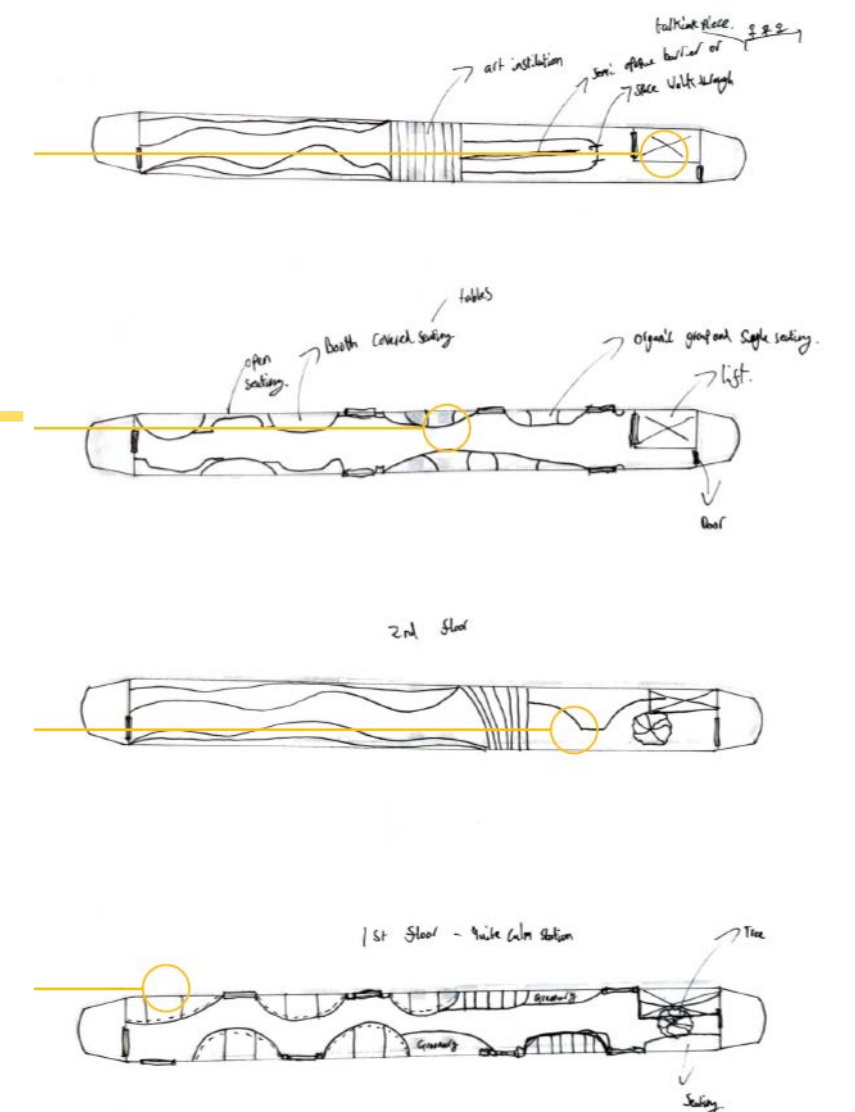
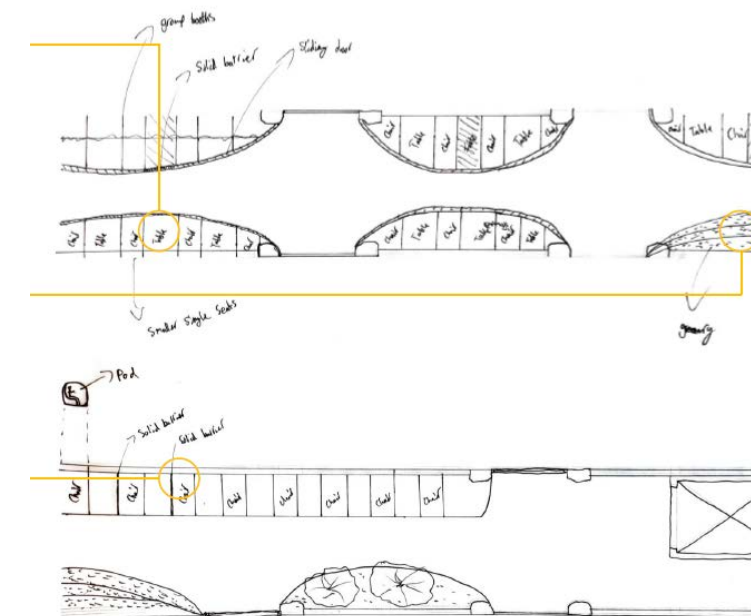


Lydia - The Joy stop (tram seating)



A hand-drawn diagram of a boat hull cross-section. The diagram shows the hull's internal structure with several ribs. Annotations include:
 

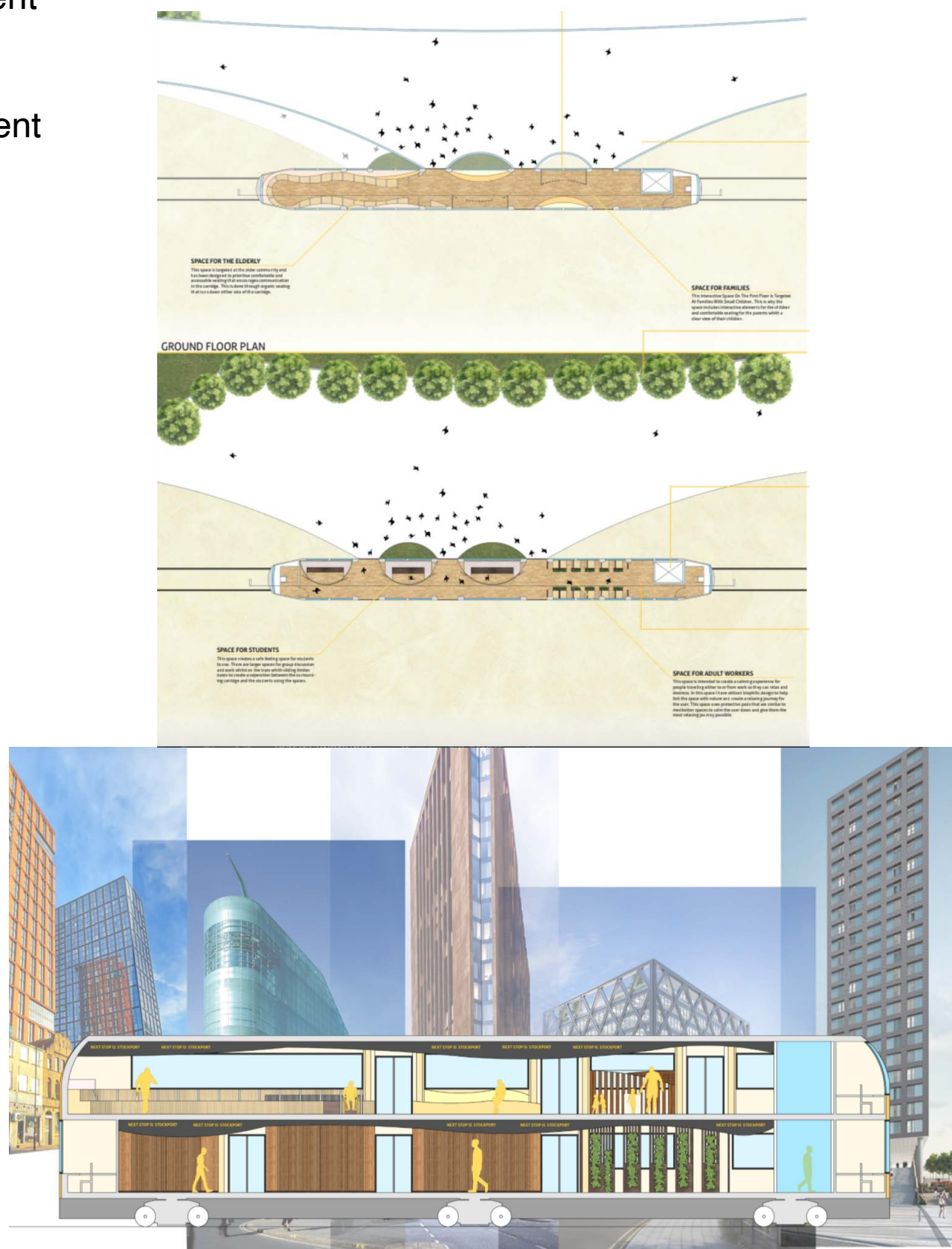
- "side co. plate" pointing to the upper side of the hull.
- "Veneering for string" pointing to a layer on the hull's surface.
- "No. 100 plate" pointing to a vertical plate on the right side.
- "Side Co. for stability" pointing to the lower side of the hull.
- "Ribs (all) essential to help string stand up" pointing to the internal ribs.





# Delivery and Final Presentation

Coming towards the final stages of the project, it was time to present our finished **journey map collaboration** to the tutors and TfGM's design team to get final feedback. When putting together a final slide we decided to use miro to present all our individual design concepts in the Journey map of Shudehill Interchange through to Stockport interchange, **mirroring the Gleamer's travel route**.



Pictures from final presentation.

