



cafe space

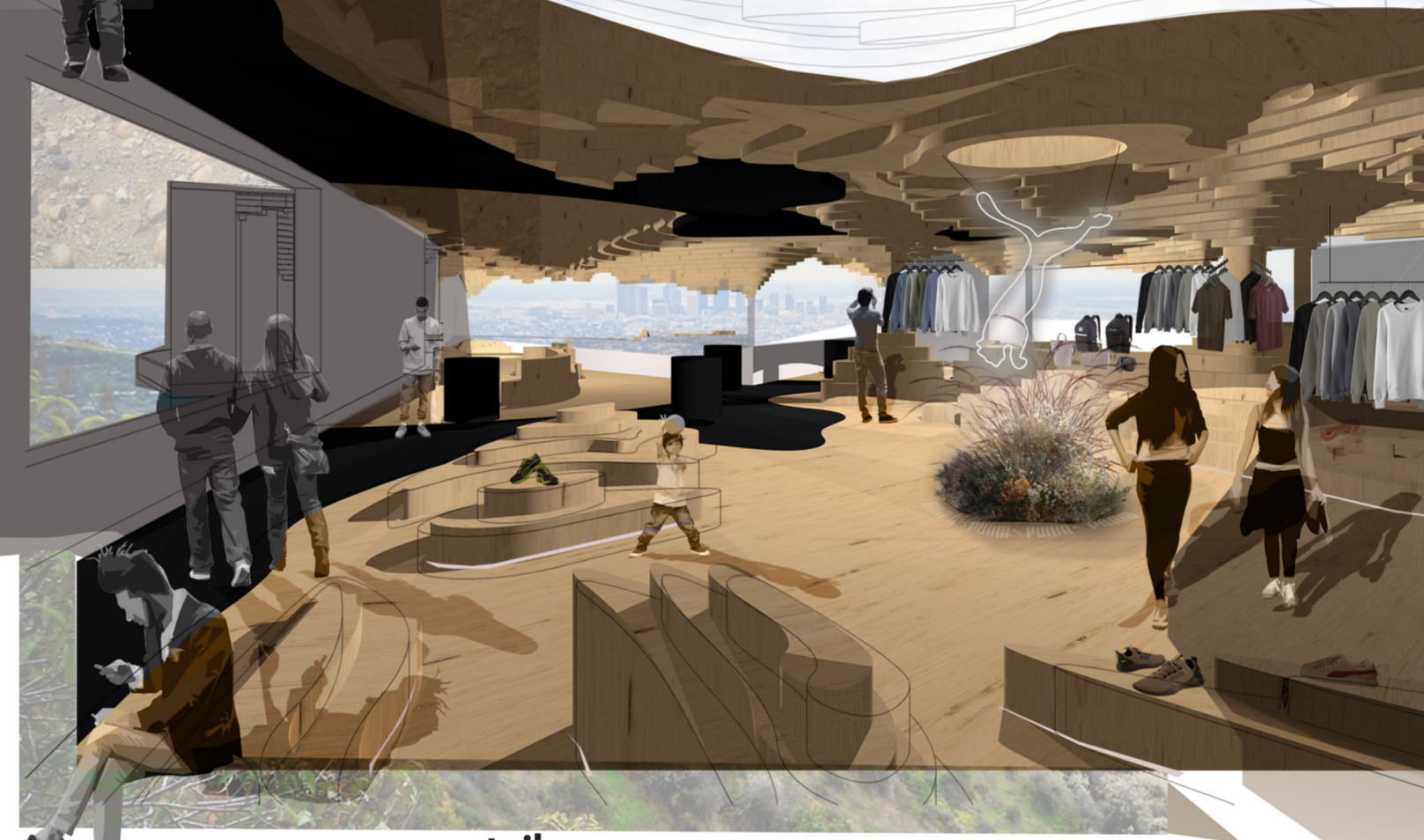


cafe serves vegan and high protein options for hikers and people using the sports facilities. With beautiful views of LA, the cafe focuses on healthy and aesthetic meals to attract visitors from all walks of life.



section B (not to scale)

PUMA HIKES



retail space

clothing retail area based on topographic maps. clothes are displayed in this sculptural retail space, and purchased with self-service style check outs.



section A (not to scale)

shoe display area. seats surround the tree for customers to try shoes on.

information area, customers can plan hiking routes and book out the court, as well as view PUMA's catalog and order things to be tried on or sent home.

water is collected via the roof, filtered through the upstairs garden and deposited here for hikers to drink and fill their bottles, cooled naturally underground.

front desk where PUMA passes can be purchased to use site facilities, rent equipment and get information.



entrance and information area



topanga park



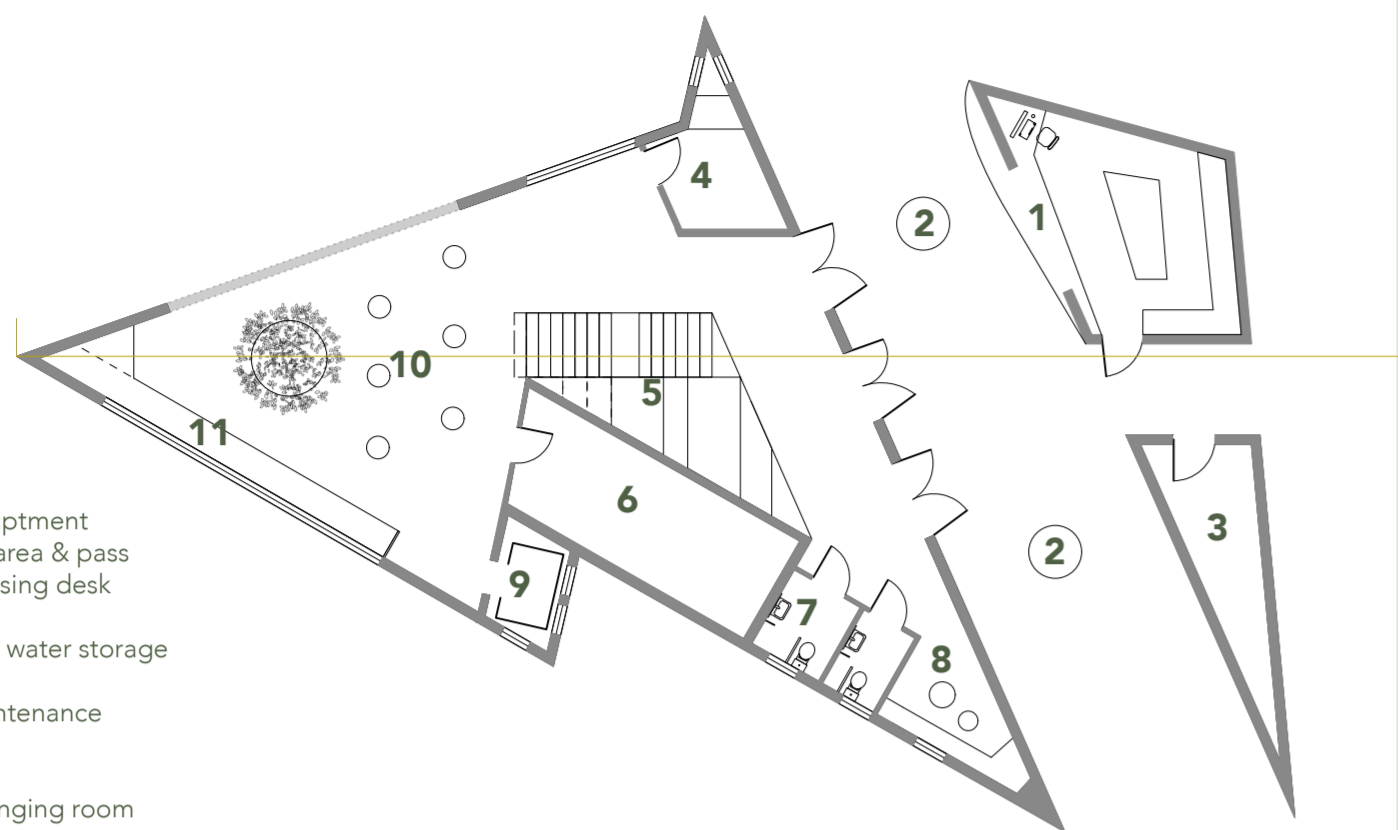
getty view park

LOS ANGELES

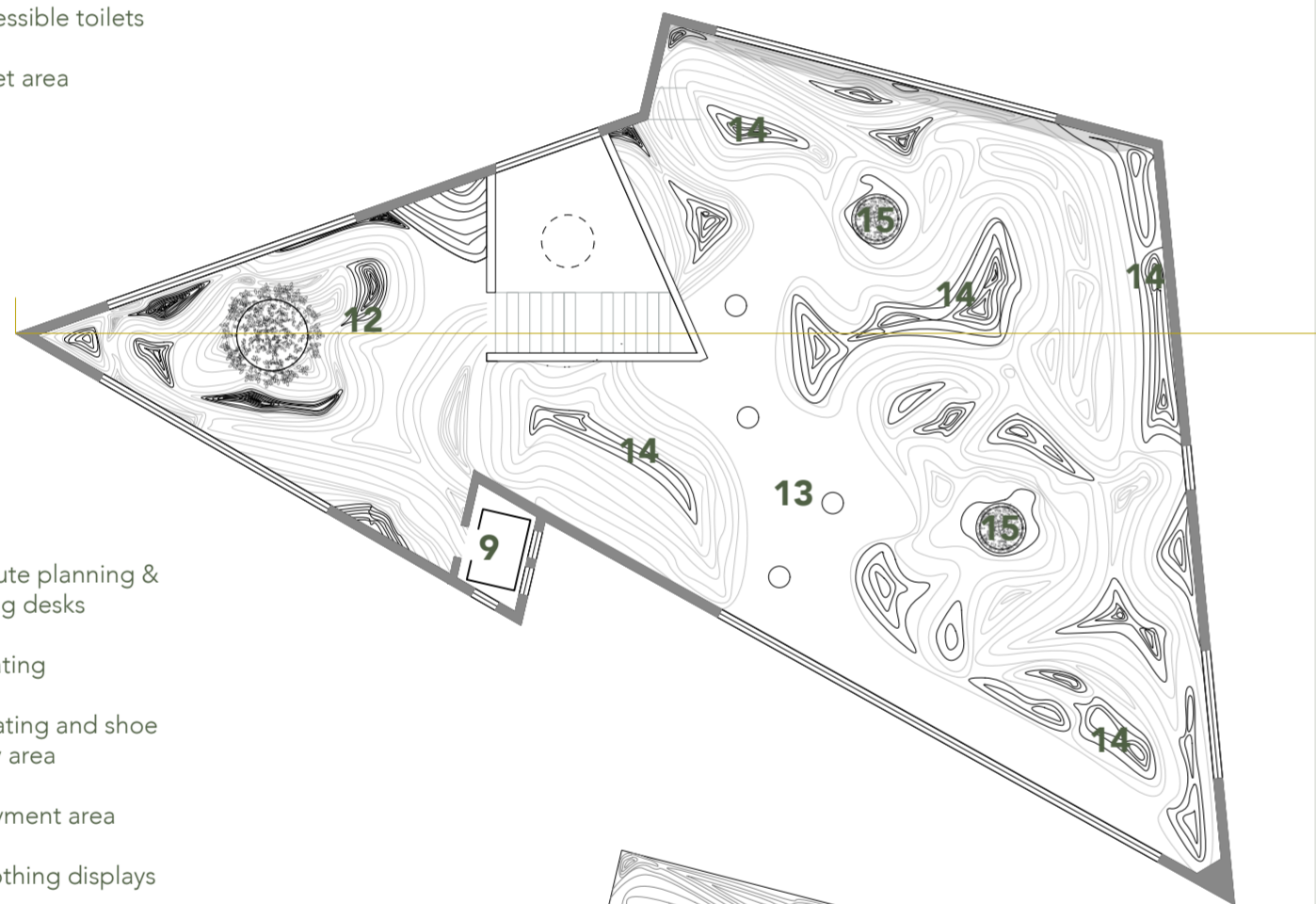
Site Plan 1-500@A2

- 1- Sports Court
- 2- Retail building
- 3- Toilets and outdoor seating
- 4- Cafe

The Flagship store is located in LA because of the cities access to outstanding natural beauty. Getty View Park is easily accessible from the city centre via tram or car, and the Flagship site is a walkable distance away from the Getty Gallery, a gallery with the average footfall of 1.5 million people annually ⁴.



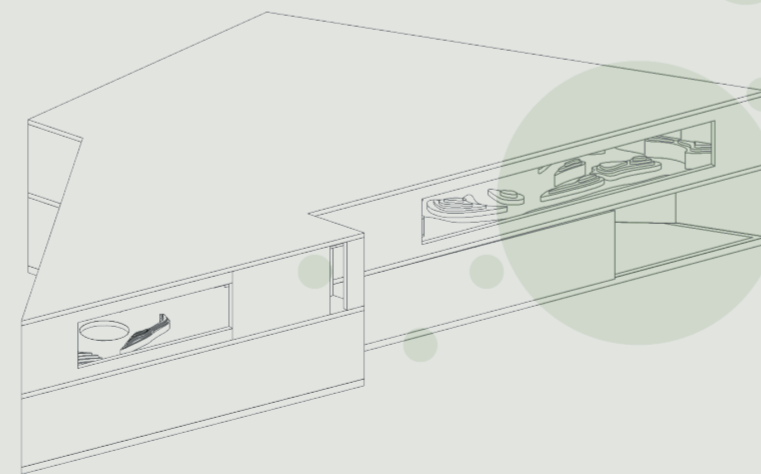
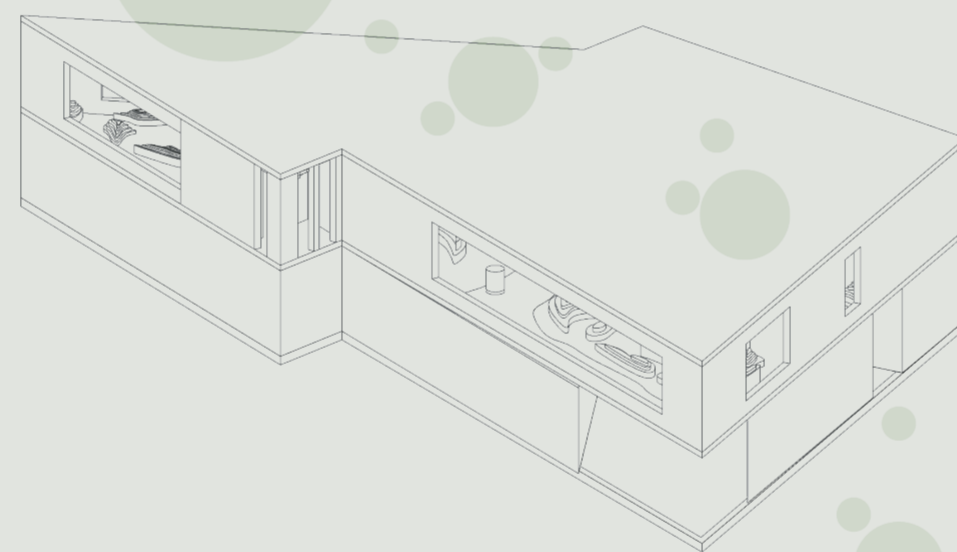
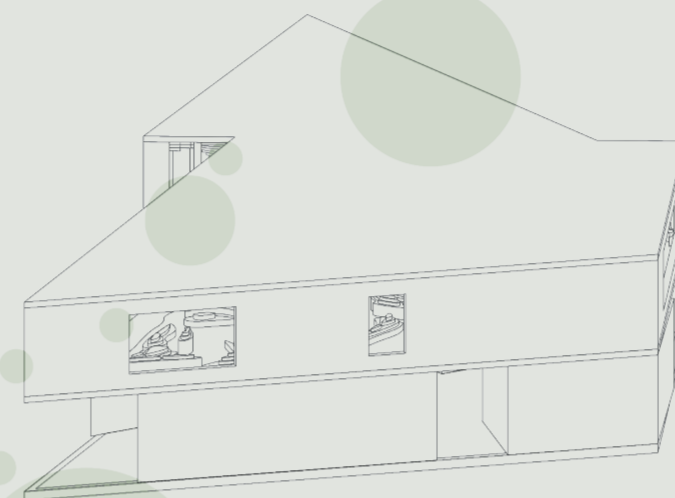
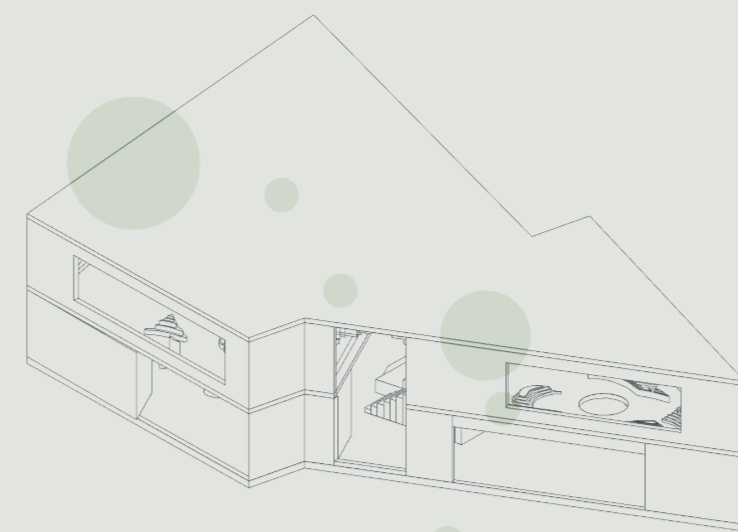
- 1- Equipment rental area & pass purchasing desk
- 2- Rain water storage
- 3- Maintenance room
- 4- Changing room
- 5- Stairs
- 6- Staff Room
- 7- Accessible toilets
- 8- Quiet area



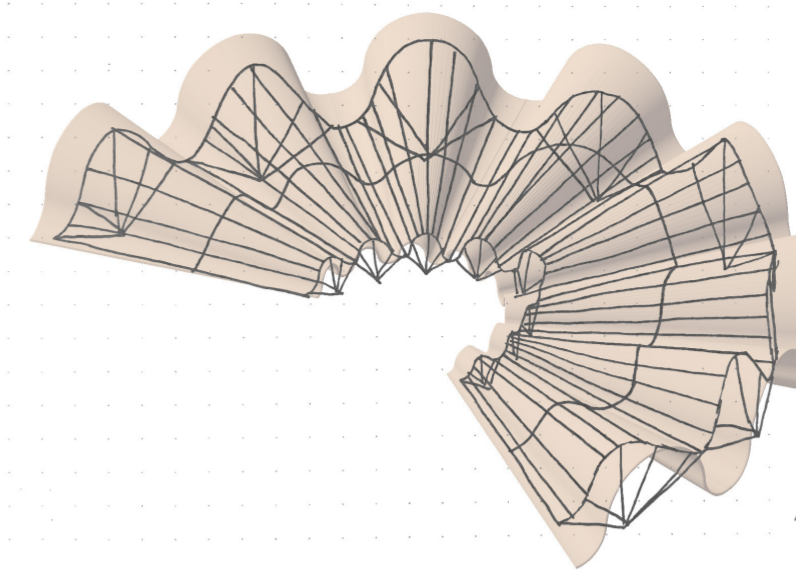
- 9- Lift
- 10- Route planning & booking desks
- 11- seating
- 12- Seating and shoe display area
- 13- Payment area
- 14- Clothing displays
- 15- Indoor Garden



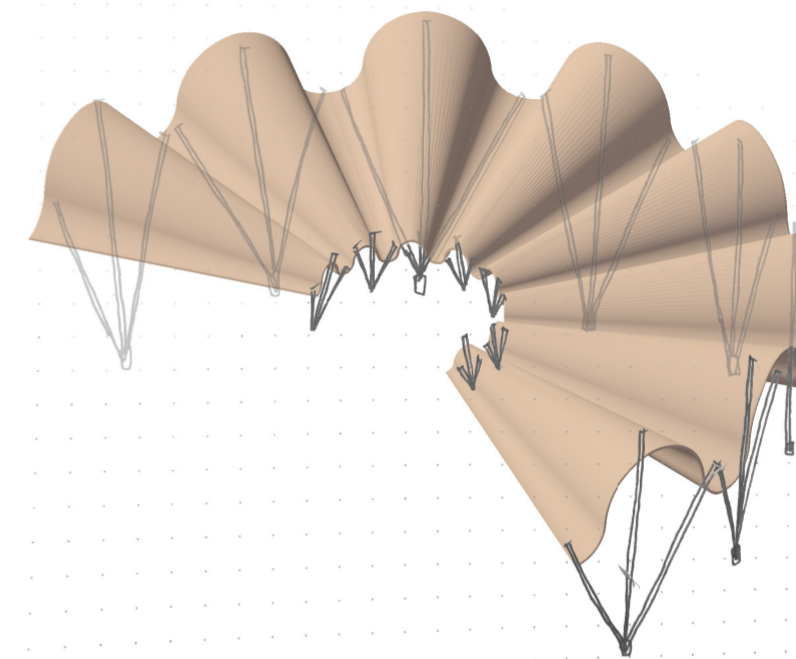
Floorplan & Roof plan 1:100 @A2



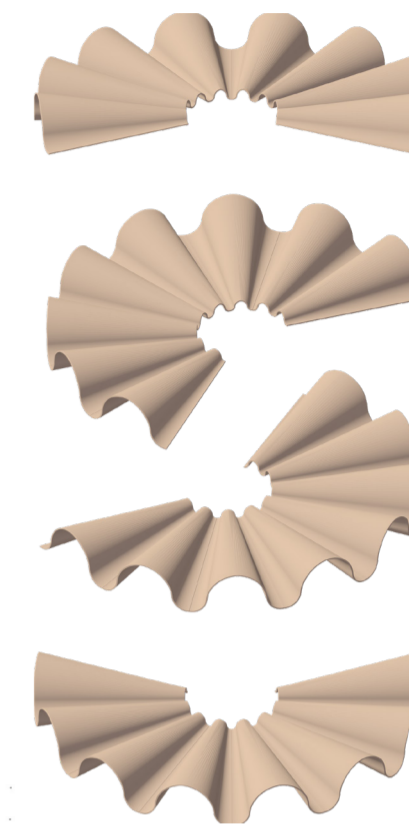
the roof collects rain water and filters it into the indoor gardens in the retail space, which in turn filters through natural materials into the rain water storage. Hiker's can use the water to fill up bottles and get a drink. In this way the indoor gardens can be maintained without using water supplies.



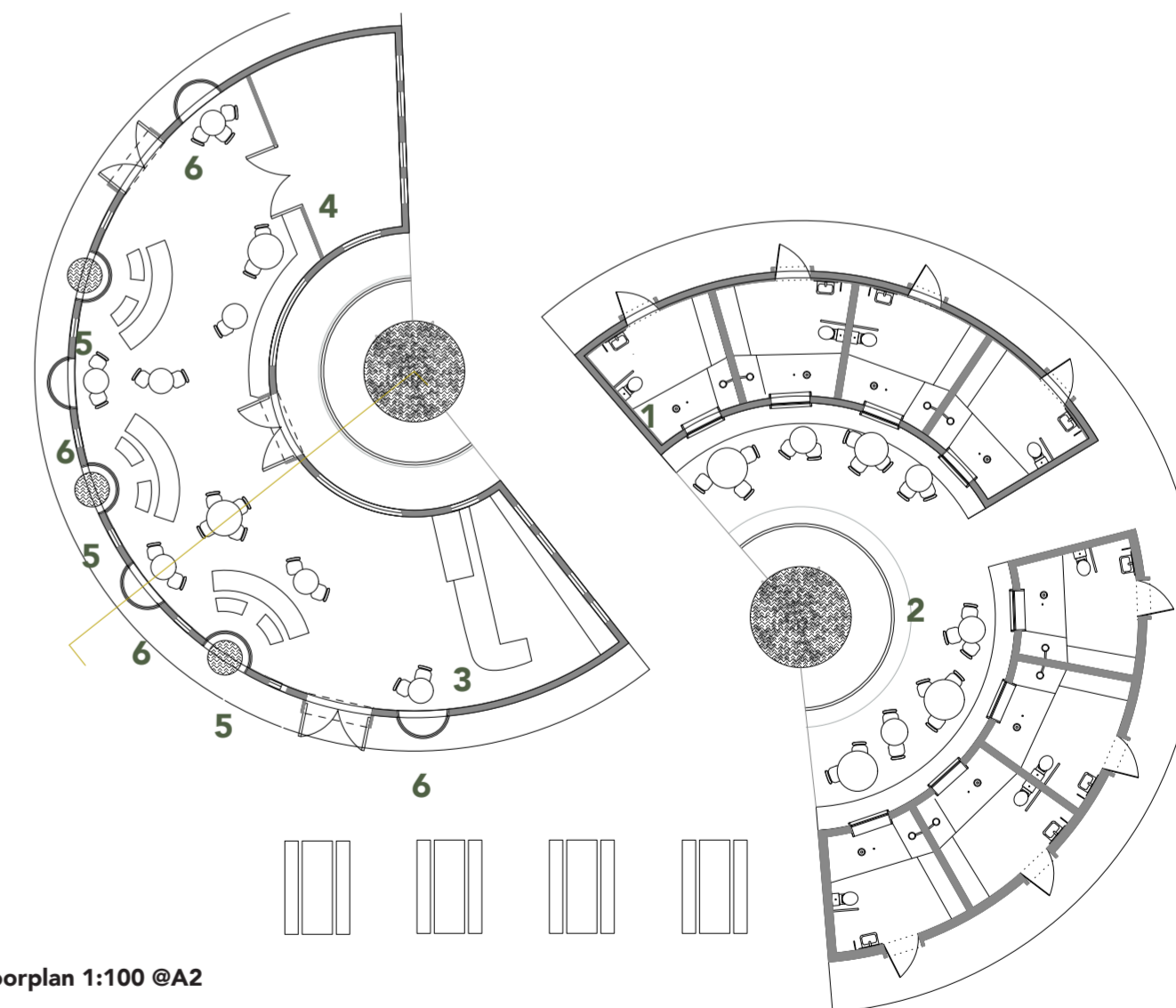
INTERNAL FRAMING



EXTERNAL FRAMING



cafe design details



Floorplan 1:100 @A2

- 1- accessible bathrooms
- 2- outdoor seating
- 3- cafe desk
- 4- kitchen
- 5- garden
- 6- window seat