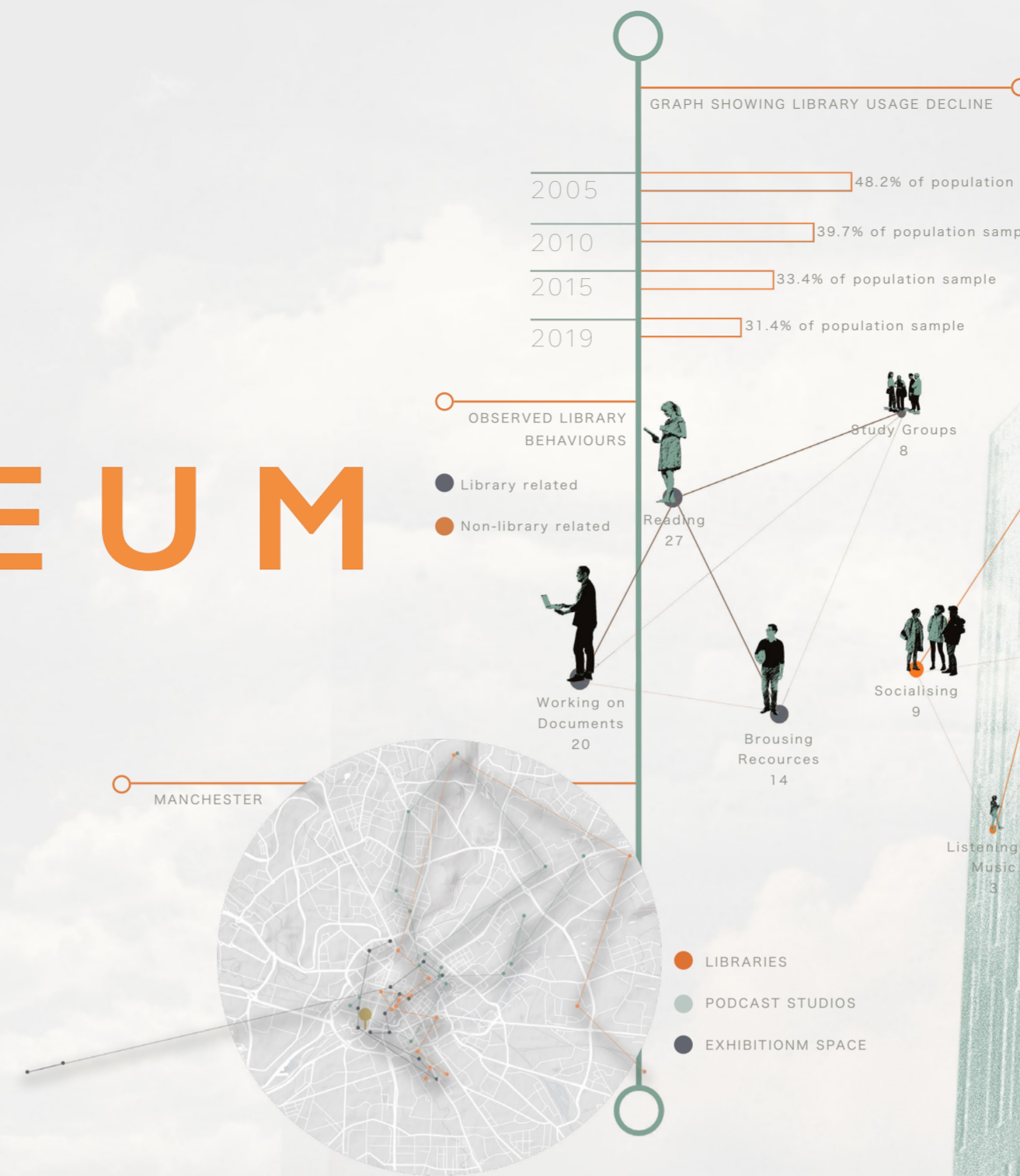


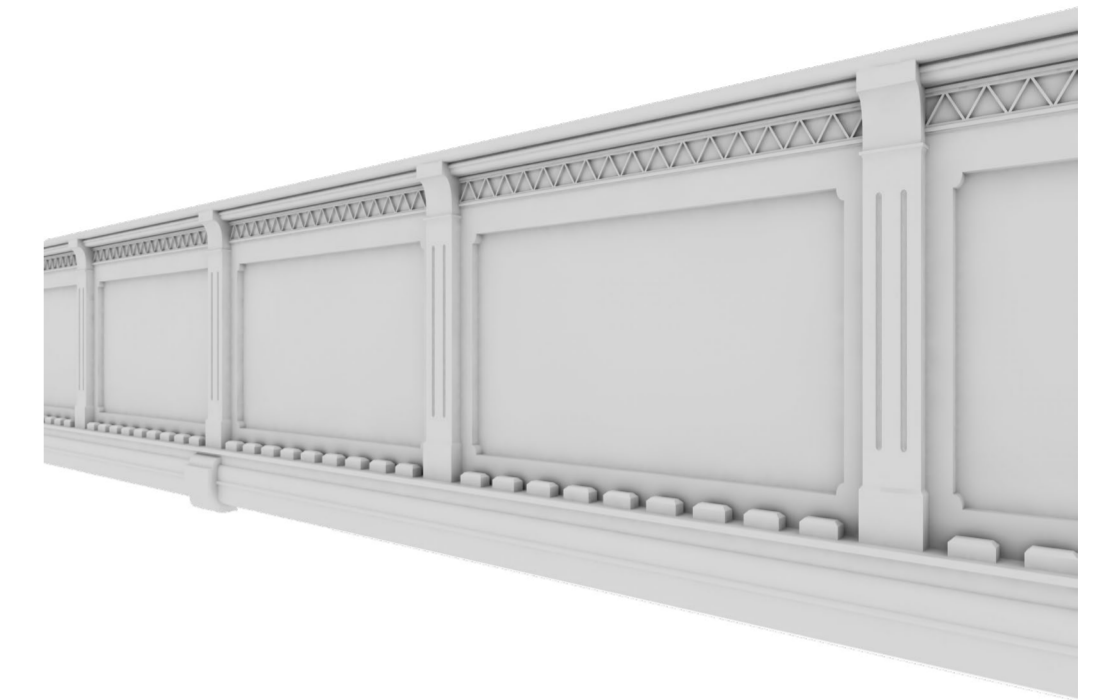
REATHENEUM

Redefining the public library; using ephemeral interventions to create an open network rich in cultivation, creativity and connection.

The library is a pillar of the human experience, yet it risks becoming obsolete in the modern age. ReAtheneum introduces ephemeral interventions to adapt to ever-changing trends and needs of the public. Once a platform for knowledge has passed, the library makes room for the next. Approaching the library as an open platform leaves room for messy, rich networks of people and ideas, continuously sparked and maintained by the library's changing resources.

The library aims to stay as a separate entity the host building (Castlefield Congregational Chapel), simply occupying the space; a consideration of the impermanency of design.





ARCHITECTURAL DETAILS

The chapel's architectural significance can be seen through its features; the column details, sandstone facade and grand window trim.

It was important for me to study these details as ReAtheneum aims to stay as a separate entity, simply occupying the host building. This is taking into account the impermanency of design, instead taking a different approach rarely seen in industry, where the original integrity of the host building remains intact throughout their occupancy of ReAtheneum. Using reference images of the chapel, I build each detail using Vectorworks. This informed my design process through conservation and consideration of such architectural details.

1. THE CONCEPT OF EPHEMERALITY

I began thinking of places as moment, fleeting in time. Conceptual drawings visualise the impermanency of design, and how ephemeral architecture can leave room for creativity, innovation and moments of joy.

2. EPHEMERALITY IN PRACTICE

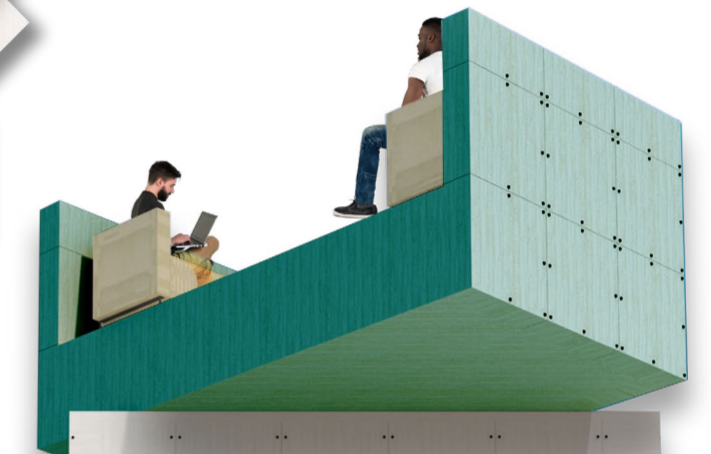
Paper models personified ephemerality, revealing the possibility of movement, unfixed parameters and experimentation. By placing these within the confines of the host building, the physicality of such possibilities came to life.

3. IMPLEMENTATION OF EPHEMERALITY

The cellular spaces are designed with ephemerality at the forefront of the design process. Once a space becomes obsolete in necessity or desire, it is easily deconstructed. The loss of the spaces doesn't alter the rest of the building as they were designed and constructed separately, making it easy to redesign and implement new cellular spaces that address whatever the next need of the public may be.



Redefining the Library, using ephemeral interventions to create an open platform rich in cultivation, creativity and connection.





HALLS OF WISDOM



ALEXANDRIA



ENTRANCE



TRAJANS CHAMBERS

KEY

1 LOGIN

- Reception

Here visitors can check out the libraries technology including Ipads and laptops, where they can then access the libraries vast digital resources.

2 ALEXANDRIA

- Lecture Hall

The great library of Alexandria was the intellectual jewel of the ancient world, attracting scholars from around the world, itself containing a lecture hall.

3 THE SCAPE

- Reading and Audiobook Room

4 HALLS OF WISDOM

- Exhibition Hall

The House of Wisdom boasted scrips of mathematics, astronomy, science, medicine and philosophy, becoming a revolutionary space for new ideas.

5 TRAJAN'S CHAMBERS

- Meeting / Study Space

Trajan's forum was two separate structures - one for works in Latin, and one in Greek.

6 CELCUS' COVE

- Podcast Studio

7 CELCUS STUDIO

- Creative Studio

The library of Celcus contained statues that represented Wisdom, Virtue, Intelligence and Knowledge.



FLOORPLANS

- Scale 1:200

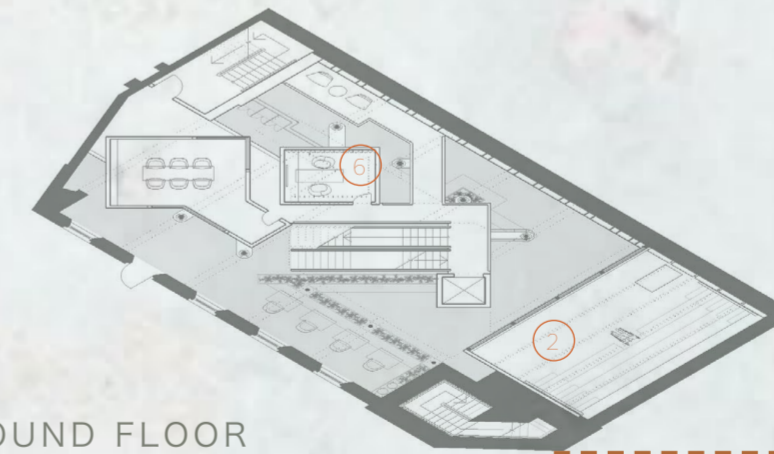
- Castlefield Congragational Chapel



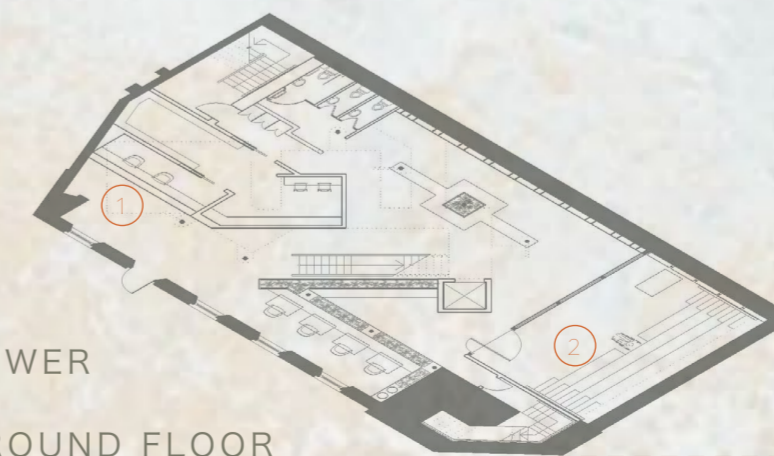
SECOND FLOOR



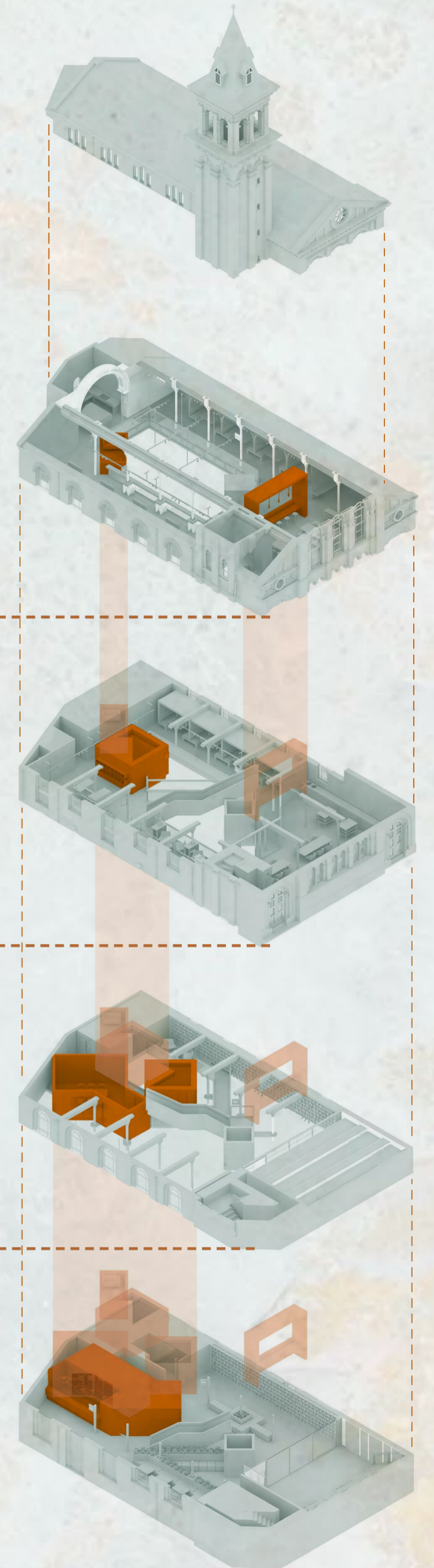
FIRST FLOOR

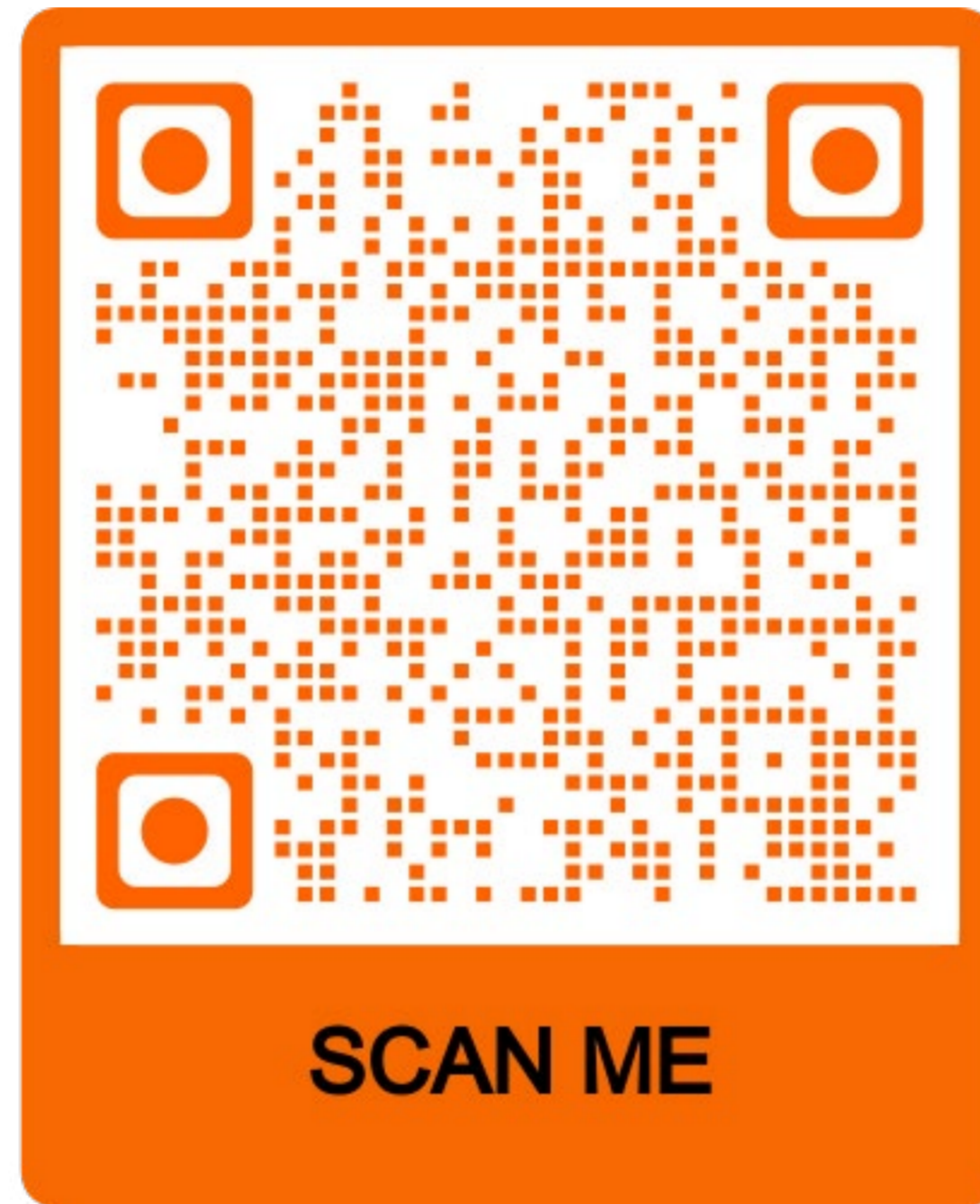


GROUND FLOOR



LOWER GROUND FLOOR





https://www.youtube.com/watch?v=NjSE8A_ptEE