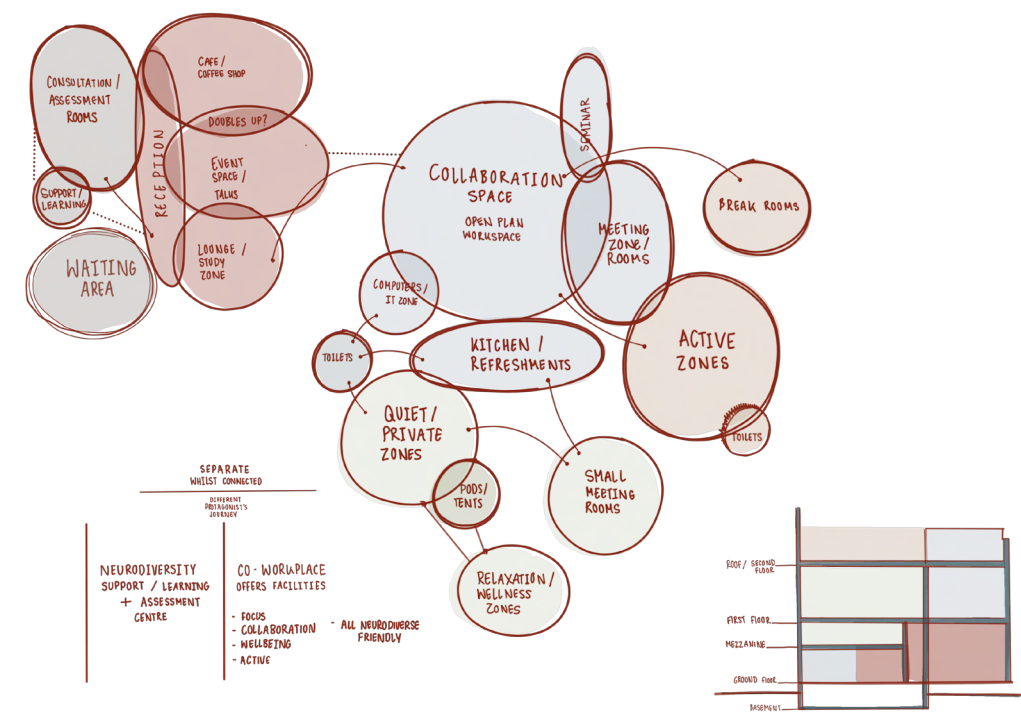


Neurodiversity is a Spectrum



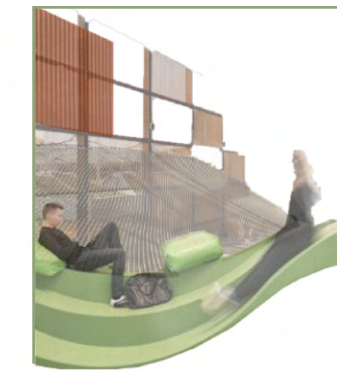
MINDSPACE is a hybrid co-workspace and assessment centre designed to accommodate and support neurodiverse individuals. The space offers different working environments designed to be safe, inclusive and inviting. Mindspace embraces neurodiversity and supports all individuals. People have the choice as to where to work/study, selecting a specific work environment within the workplace that best suits their needs. Neurodiversity is a relatively new term used to describe neurological differences. It is important to embrace and support these individuals as there is commonly a misconception in the workplace that 'one size fits all', whereas Mindspace embraces the differences of all individuals.

Each space throughout the building was designed with careful consideration for both lower sensory stimulation and higher sensory stimulation, with the intention that all neurodiverse individuals can choose a space that best suits their individual needs. Each floor of the building offers different purposes from focused to active working areas.



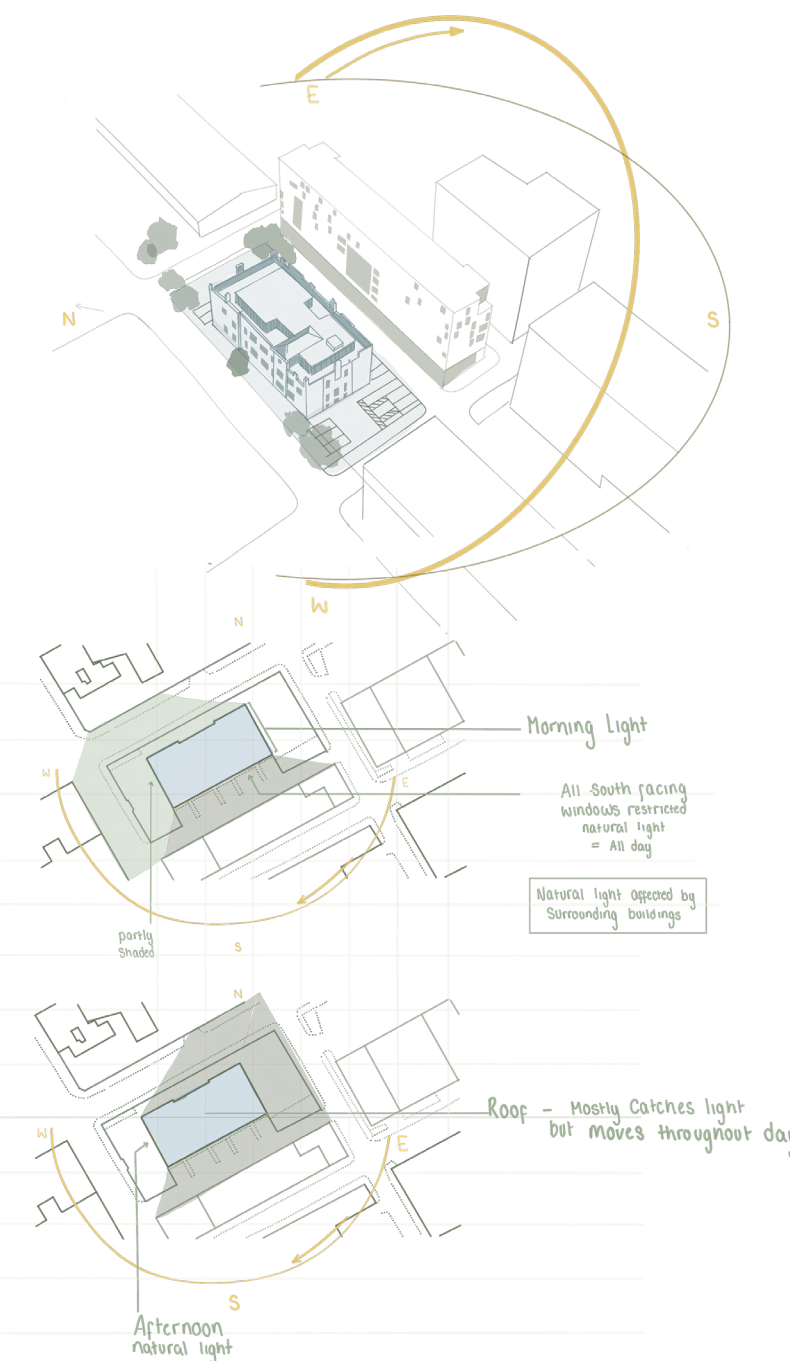
Hypersensitive

Low stimulation
Over-responsive to the things they have difficulties with

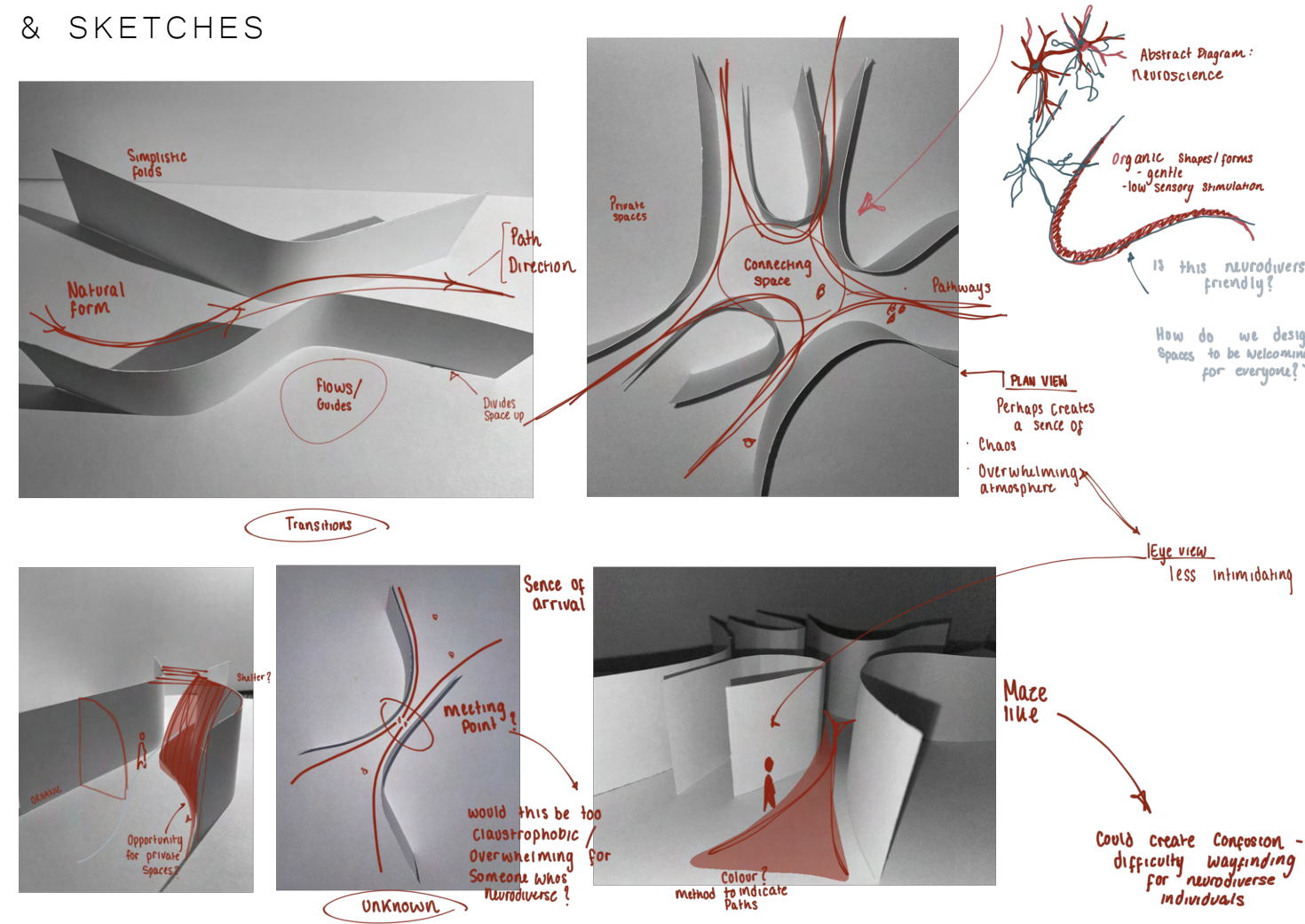


Hyposensitive

High stimulation
Under-responsive to things they have difficulties with



CONCEPT MODELS & SKETCHES



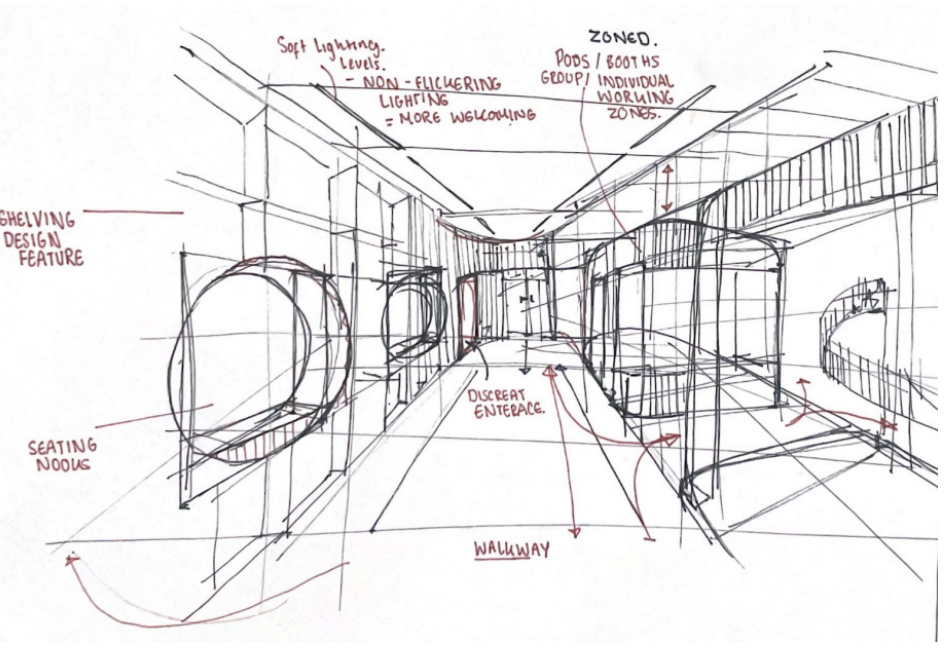
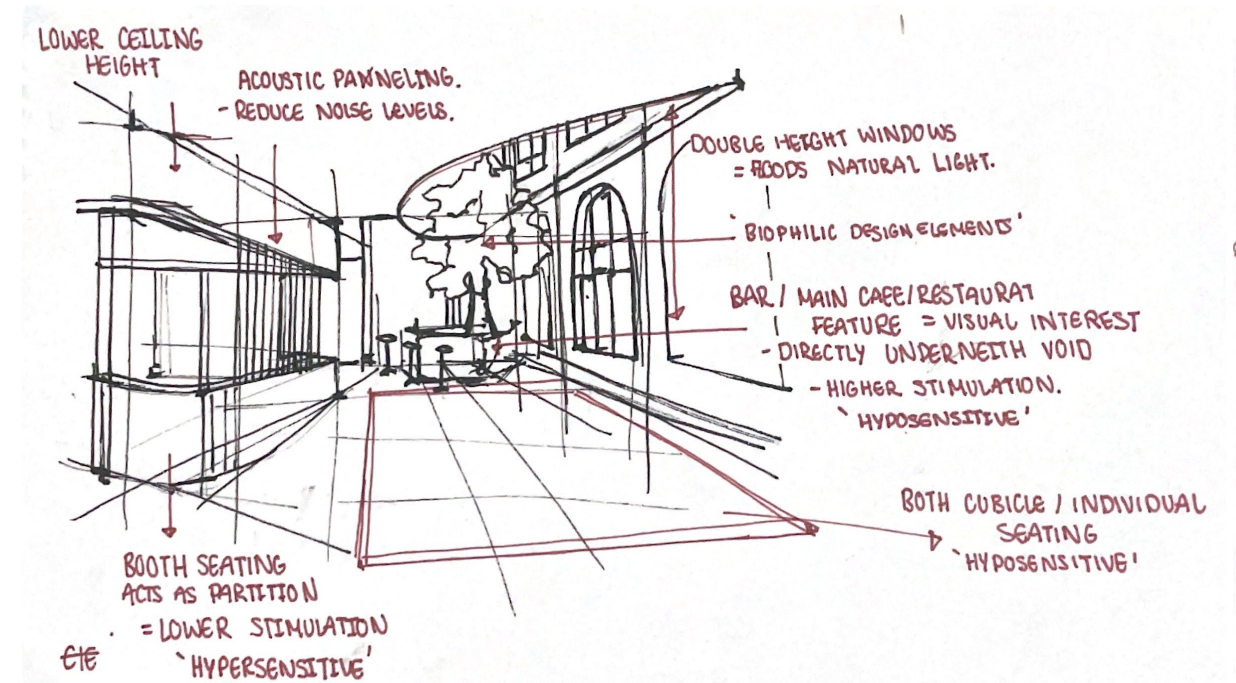
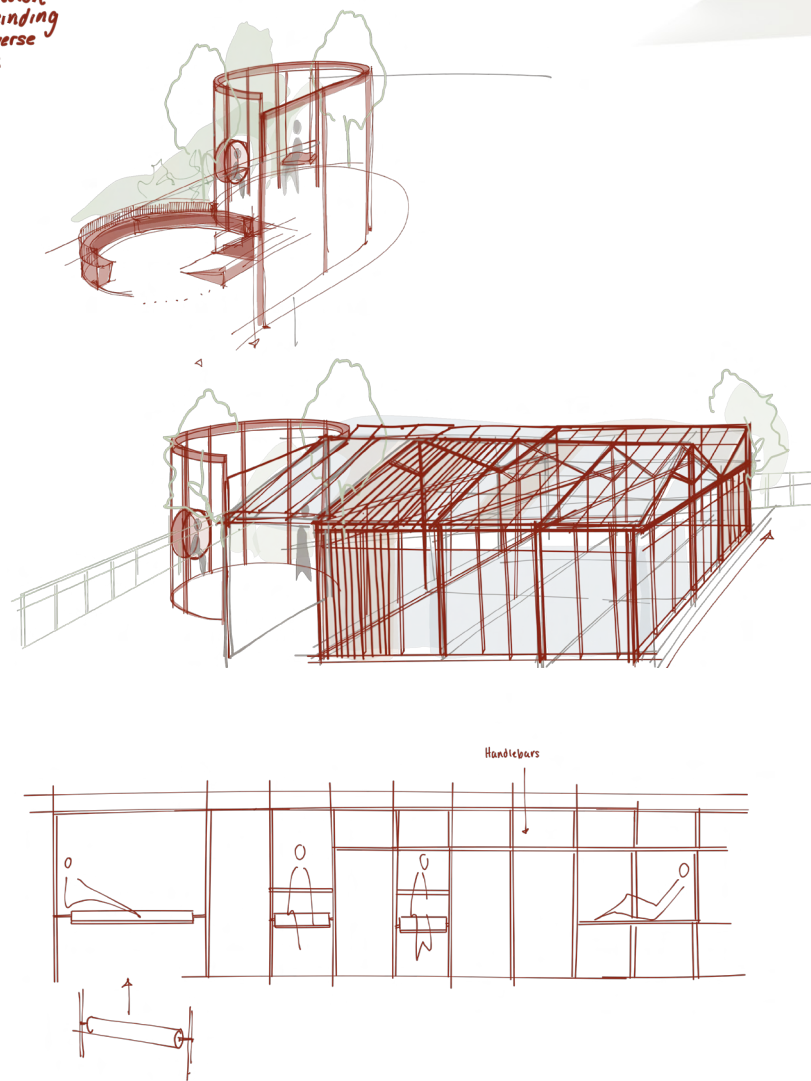
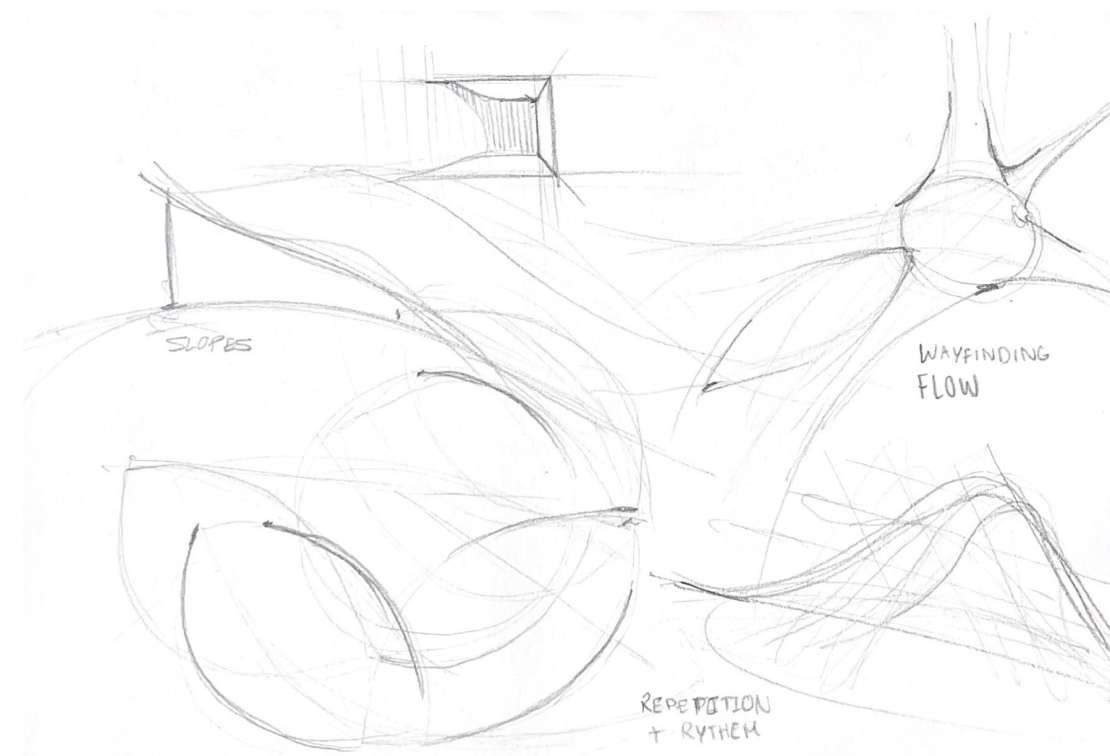
CONCEPT WORDS:

INCLUSIVE AND INDIVIDUAL

FLOW ORDERED AND REASONED

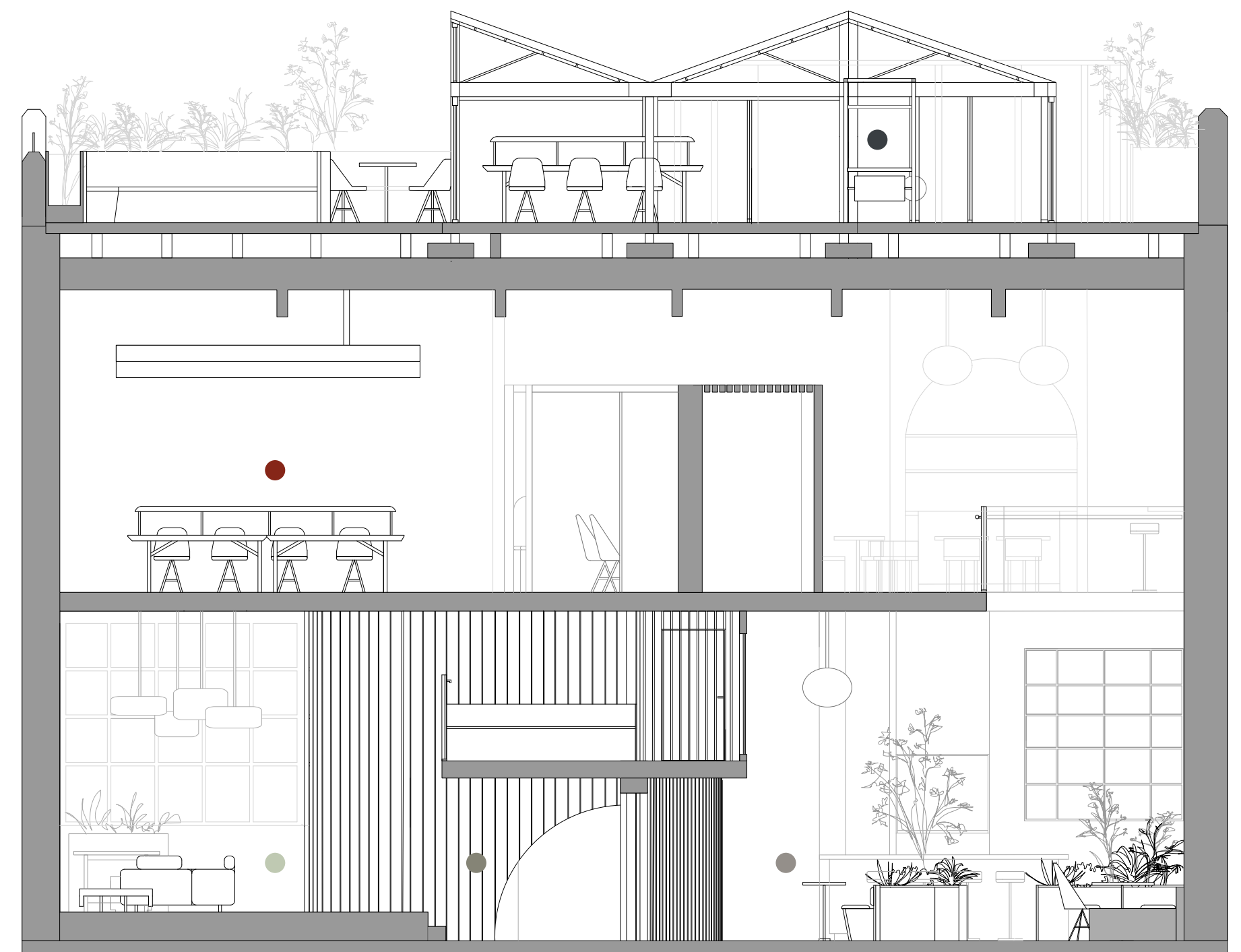
SECURE/ HAVEN NOT HIDDEN

DEVELOPING CONCEPT



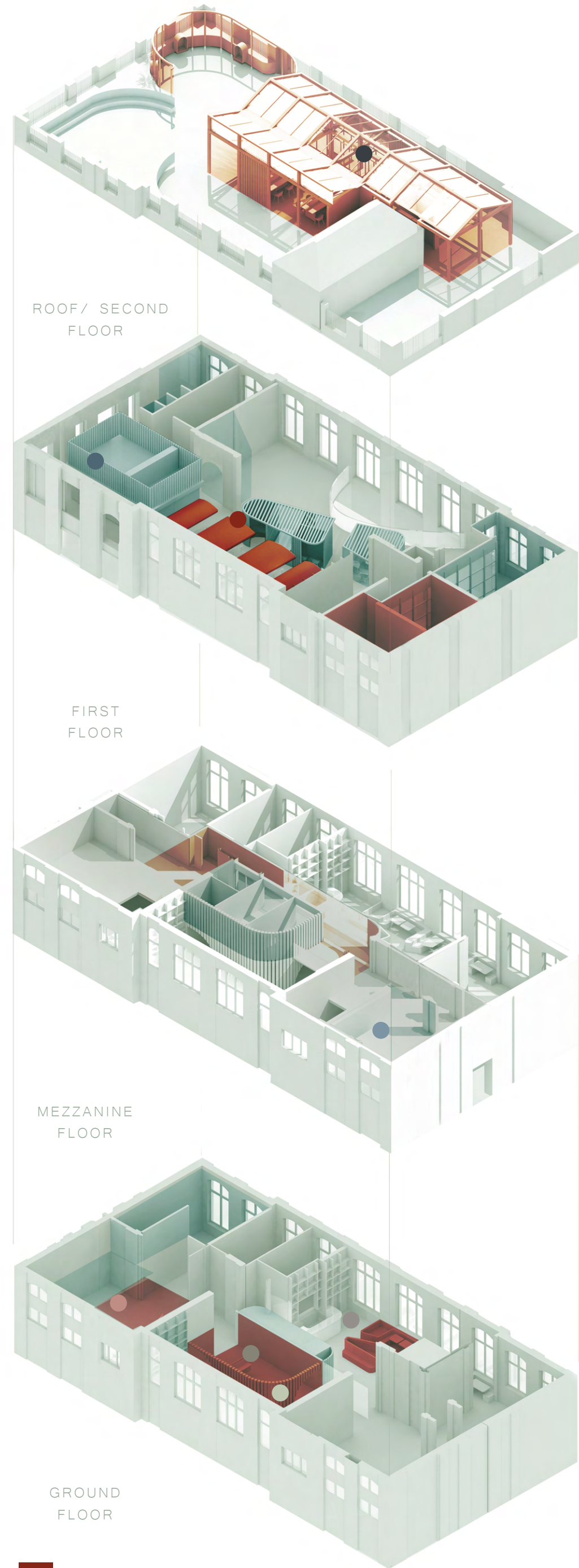
● GROUND FLOOR PERSPECTIVE SKETCH - CAFE
Both high and low sensory stimulation

FIRST FLOOR INITIAL SKETCH - FOCUS ROOMS AND MEETING ROOMS



SECTION B

CONCEPT VISUALISATION



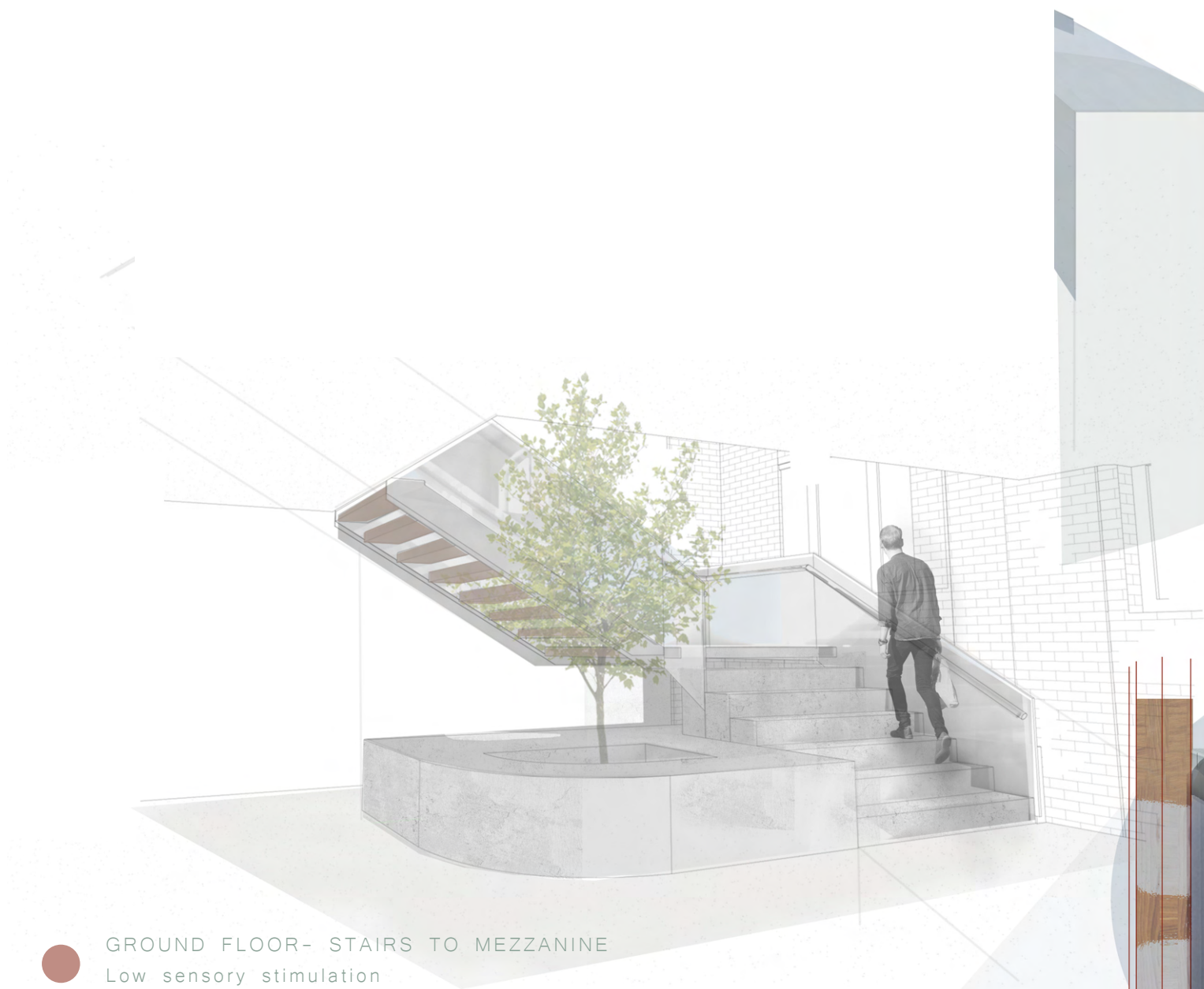
ROOF/ SECOND FLOOR

FIRST FLOOR

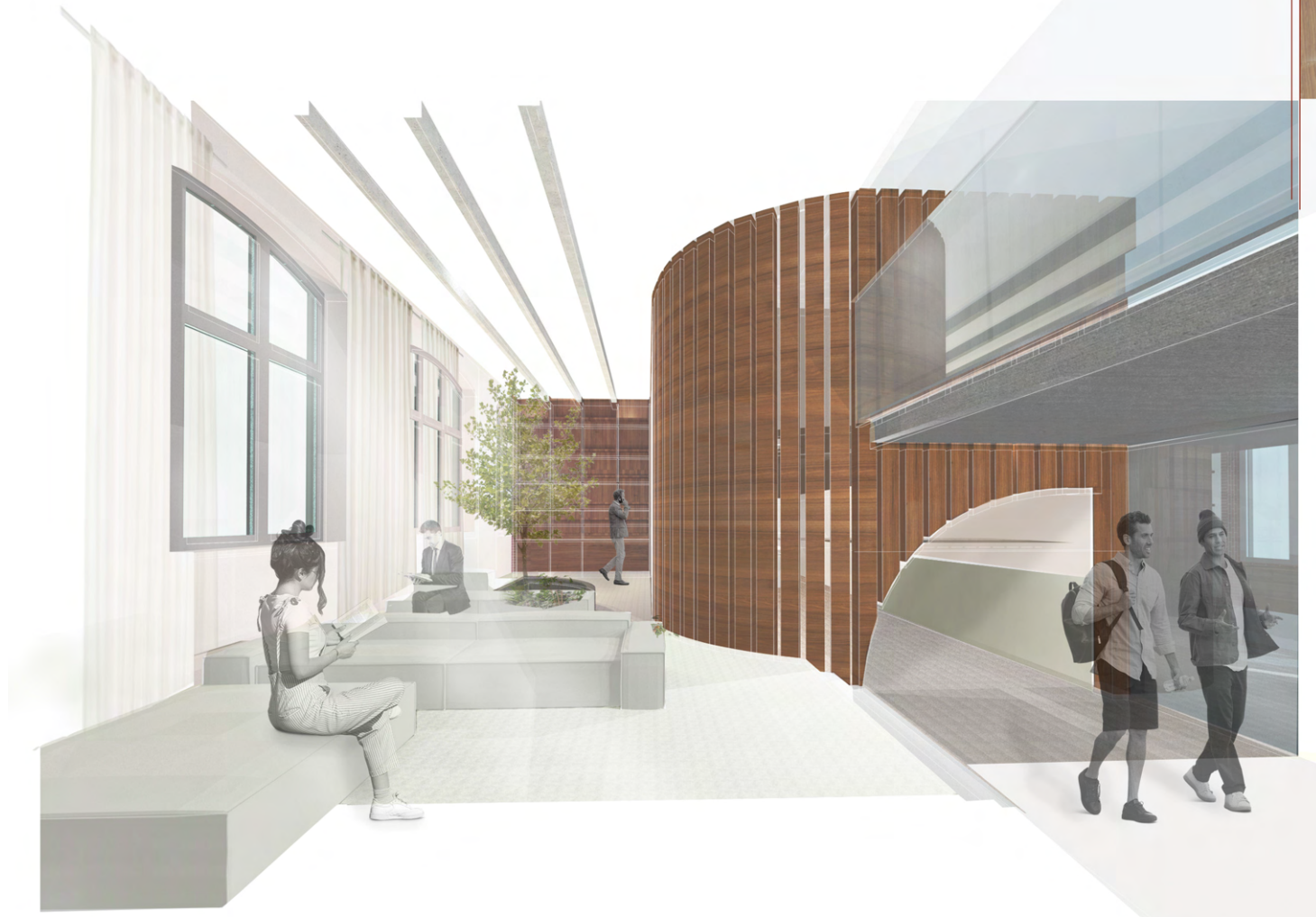
MEZZANINE FLOOR

GROUND FLOOR

■ HIGH SENSORY STIMULATION
■ LOW SENSORY STIMULATION



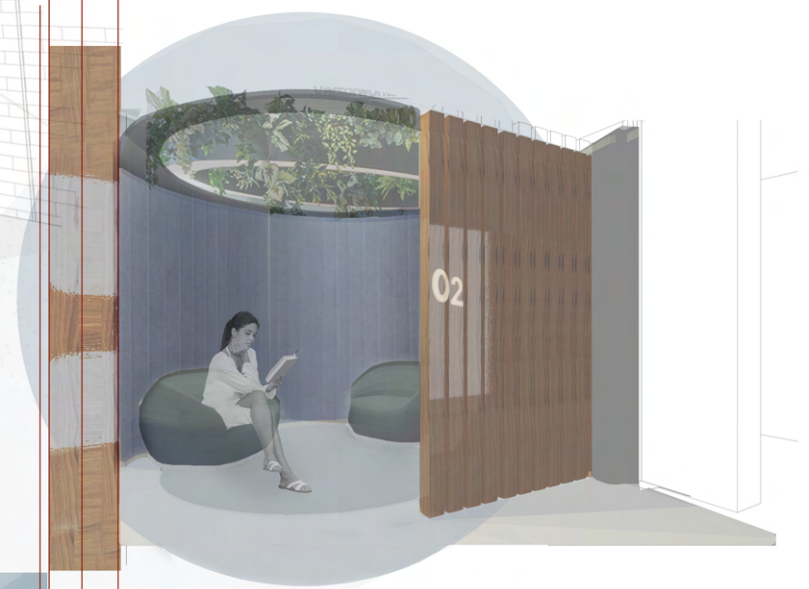
● GROUND FLOOR- STAIRS TO MEZZANINE
Low sensory stimulation



● GROUND FLOOR - LOUNGE
Low sensory stimulation



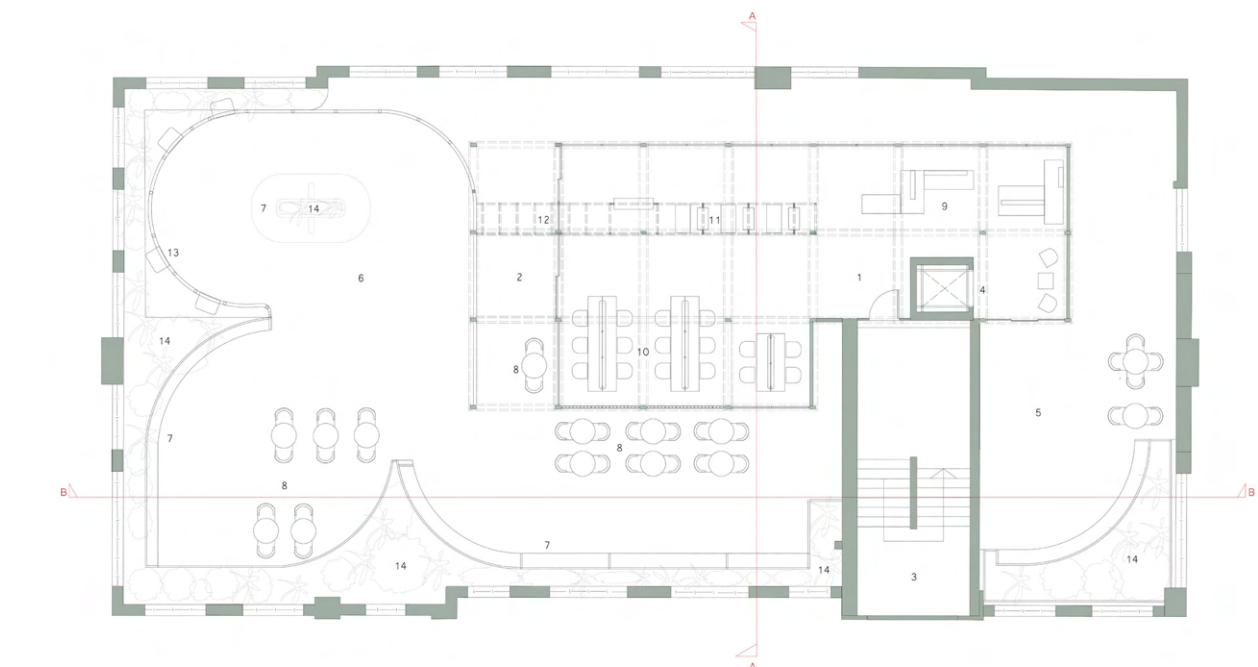
● FIRST FLOOR - OPEN WORKSTATIONS
High sensory stimulation



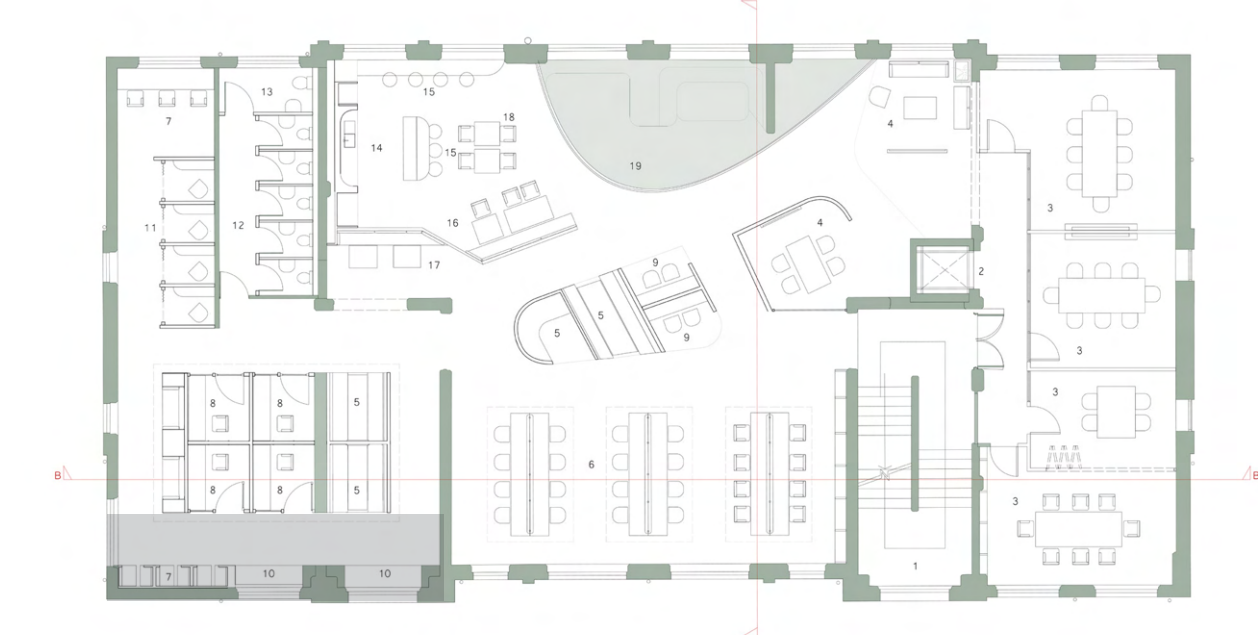
● MEZZANINE - RELAXATION ROOMS
Low sensory stimulation



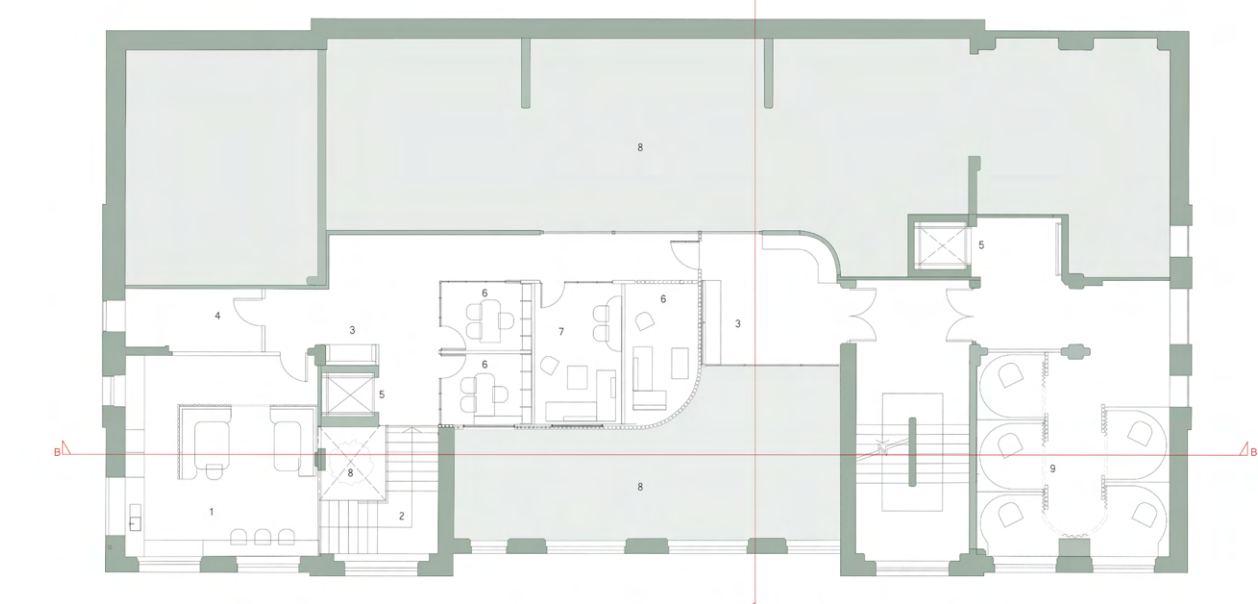
● GROUND FLOOR - LOUNGE
High sensory stimulation



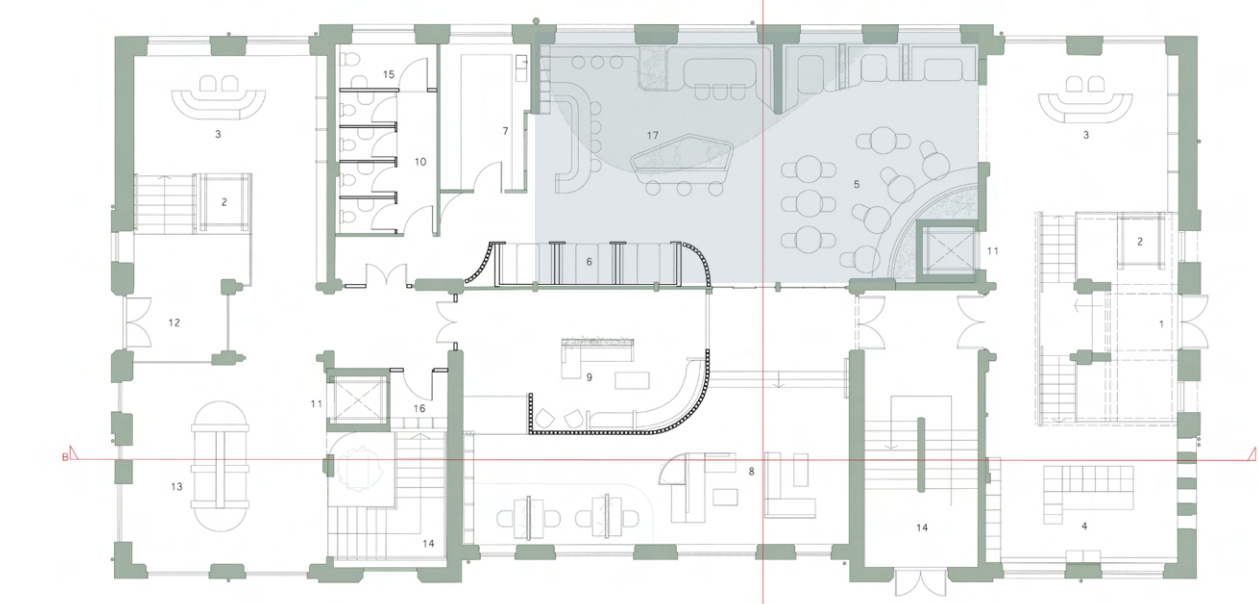
ROOF/
SECOND FLOOR



FIRST FLOOR



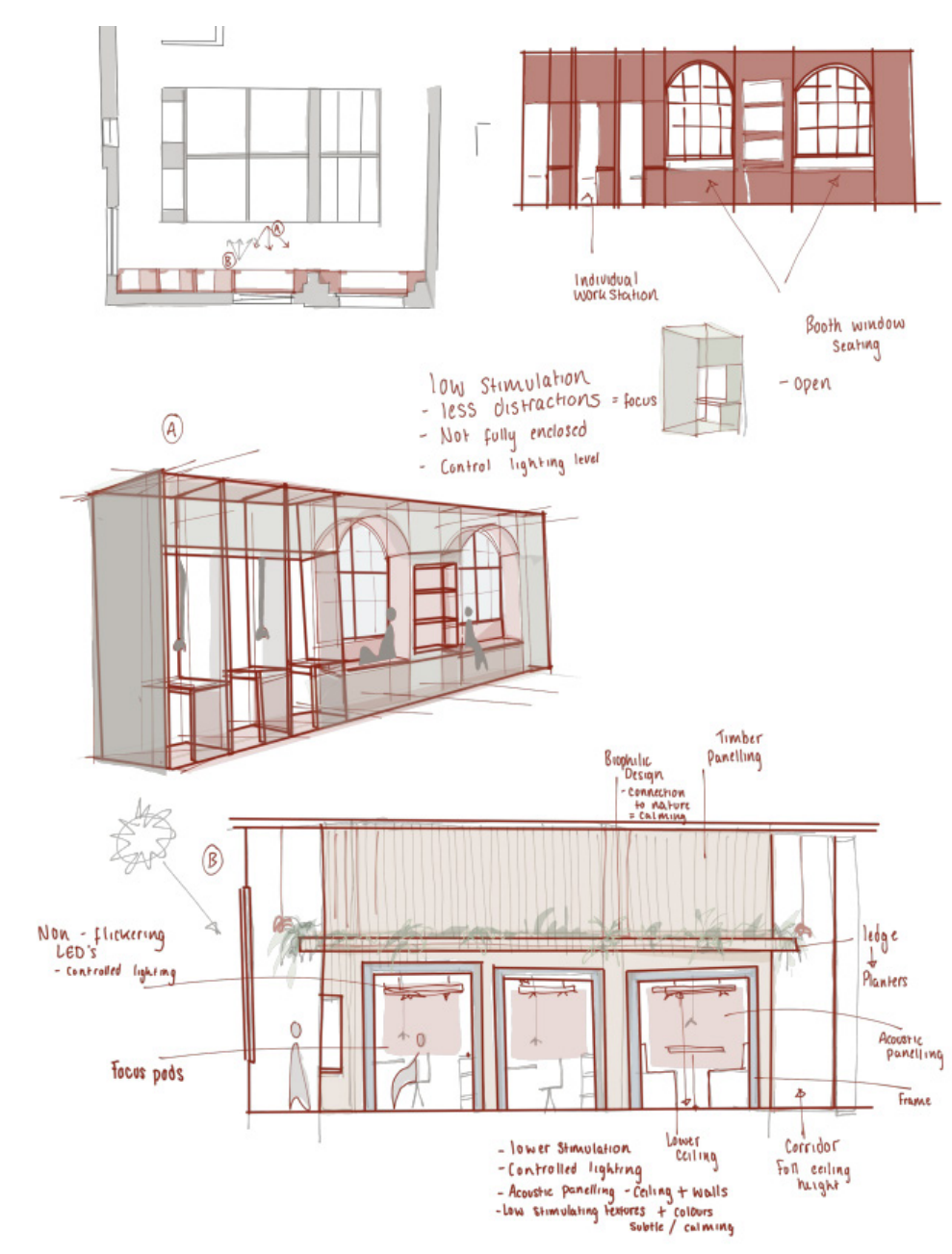
MEZZANINE
FLOOR



GROUND
FLOOR

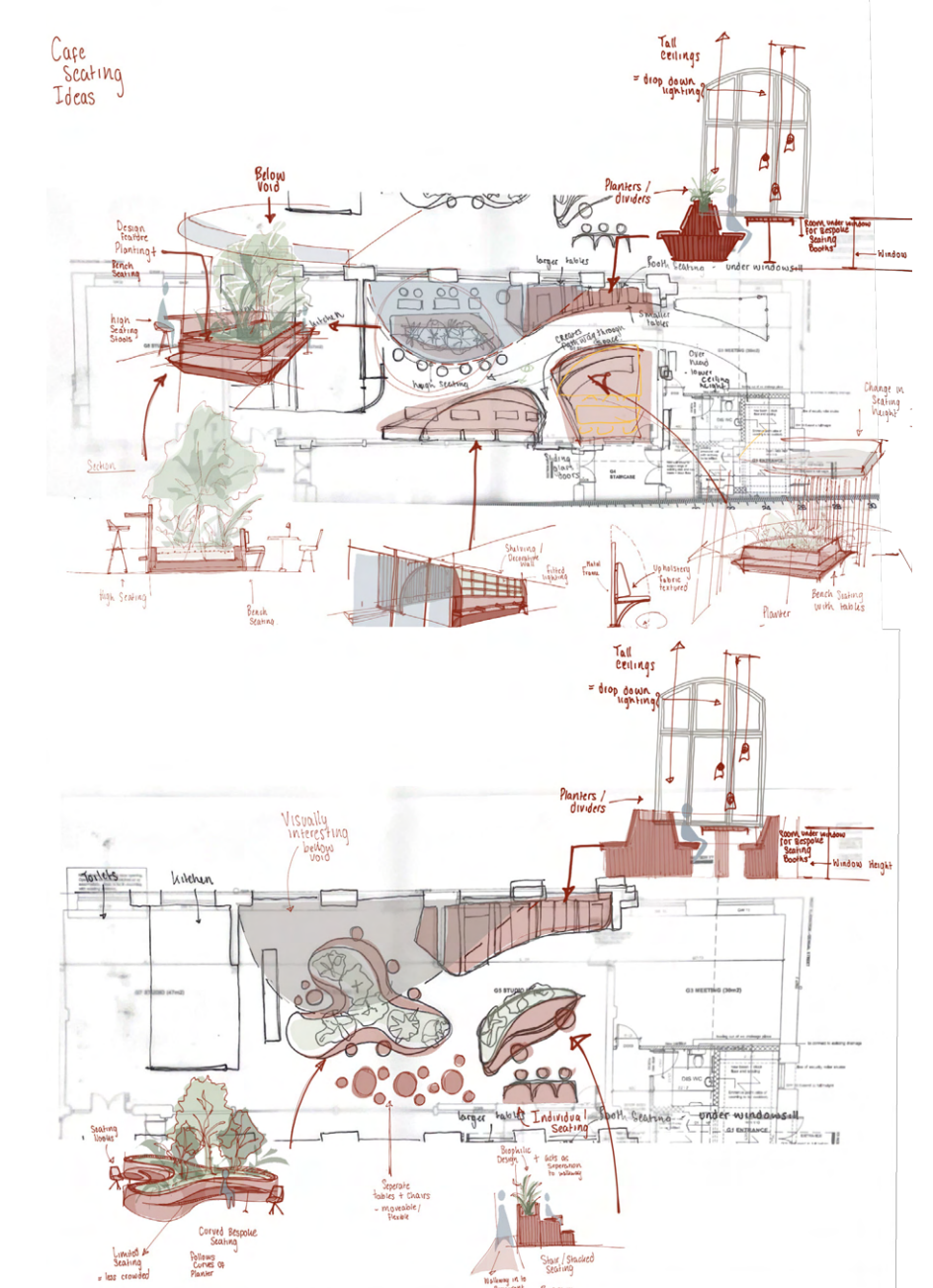
- 1 Glasshouse Structure
 - 2 Canopy
 - 3 Staircase
 - 4 Lift
 - 5 Terrace - Low Sensory Stimulation
 - 6 Terrace - High Sensory Stimulation
 - 7 Bespoke Seating
 - 8 Loose Tables & Seating
 - 9 Social Area
 - 10 Collaborative Workstation
 - 11 Active Workstations
 - 12 Handlebars
 - 13 Enclosed Seating
 - 14 Raised planting bed
-
- 1 Staircase
 - 2 Lift
 - 3 Meeting Rooms
 - 4 Informal Meeting Area
 - 5 Booth Meeting Area
 - 6 Open Workstations
 - 7 Individual Workstations
 - 8 Fully Enclosed Focus Rooms
 - 9 Focus Workstations
 - 10 Bespoke Seating
 - 11 Phone booths
 - 12 Toilets
 - 13 Disabled Toilets
 - 14 Refreshments / Kitchen Area
 - 15 High Seating
 - 16 Bench Seating - High sensory Stimulation
 - 17 Bench Seating - low Sensory Stimulation
 - 18 Loose Seating
 - 19 Void
-
- 1 Staff Room
 - 2 Staircase
 - 3 Waiting Area
 - 4 Storage Room
 - 5 Lift
 - 6 Private Meeting Rooms
 - 7 Staff Office
 - 8 Void
 - 9 Relaxation Rooms
-
- 1 Main Entrance
 - 2 Platform lift
 - 3 Welcome Desk
 - 4 Lockers
 - 5 Cafe Seating
 - 6 Booth Seating
 - 7 Kitchen
 - 8 Lounge - Low Sensory Stimulation
 - 9 Lounge - High Sensory Stimulation
 - 10 Toilets
 - 11 Lift
 - 12 Entrance to support & assessment Centre
 - 13 Waiting area
 - 14 Staircase
 - 15 Disabled Toilet
 - 16 Storage
 - 17 Void

DEVELOPMENT SKETCHES:



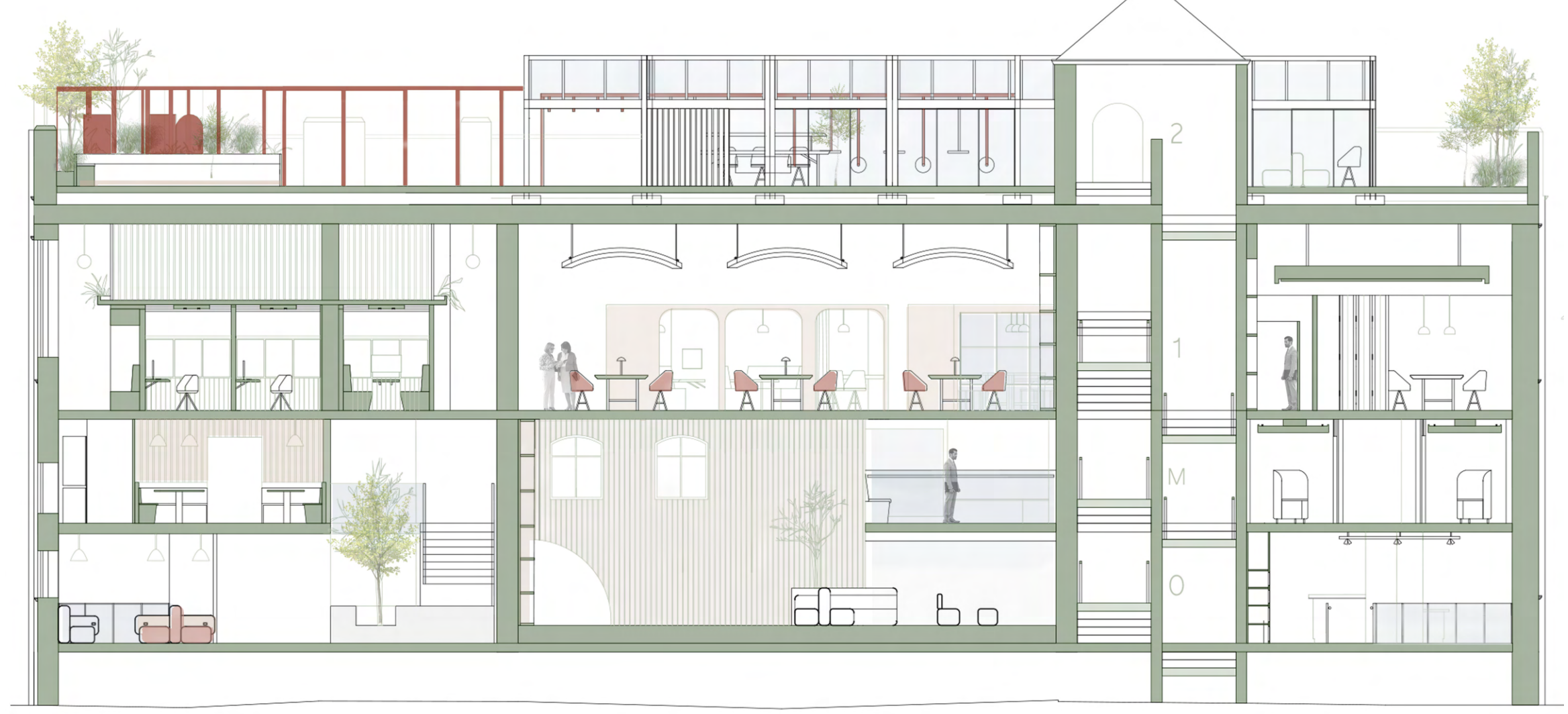
DESIGN DEVELOPMENT OF FOCUS ROOMS AND BESPOKE WINDOW SEATING

A small area that acts as a corridor to focus rooms, designed to be a calming and quiet place to sit, along with Individual work stations, designed to be low sensory stimulation.



DESIGN DEVELOPMENT OF CAFE SEATING

Designing various types of seating that offer different experiences. Enclosed seating can offer more privacy and open tables can accommodate for larger groups.

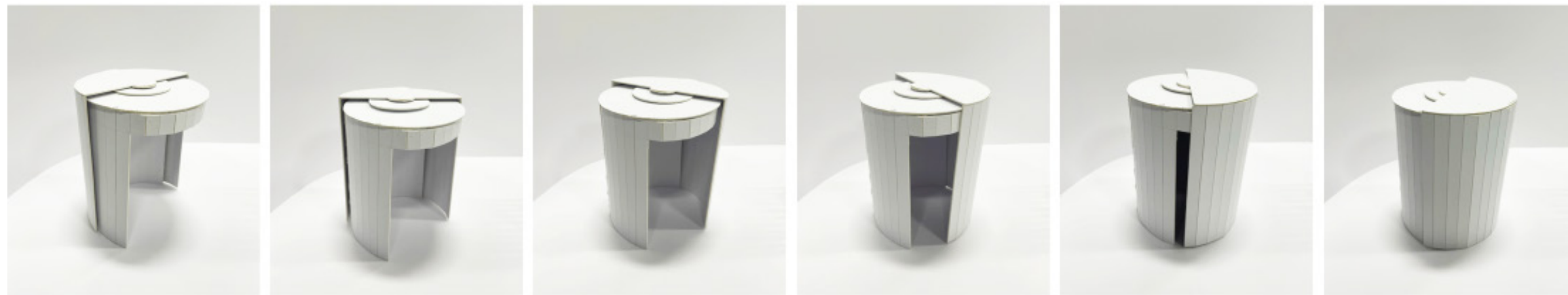
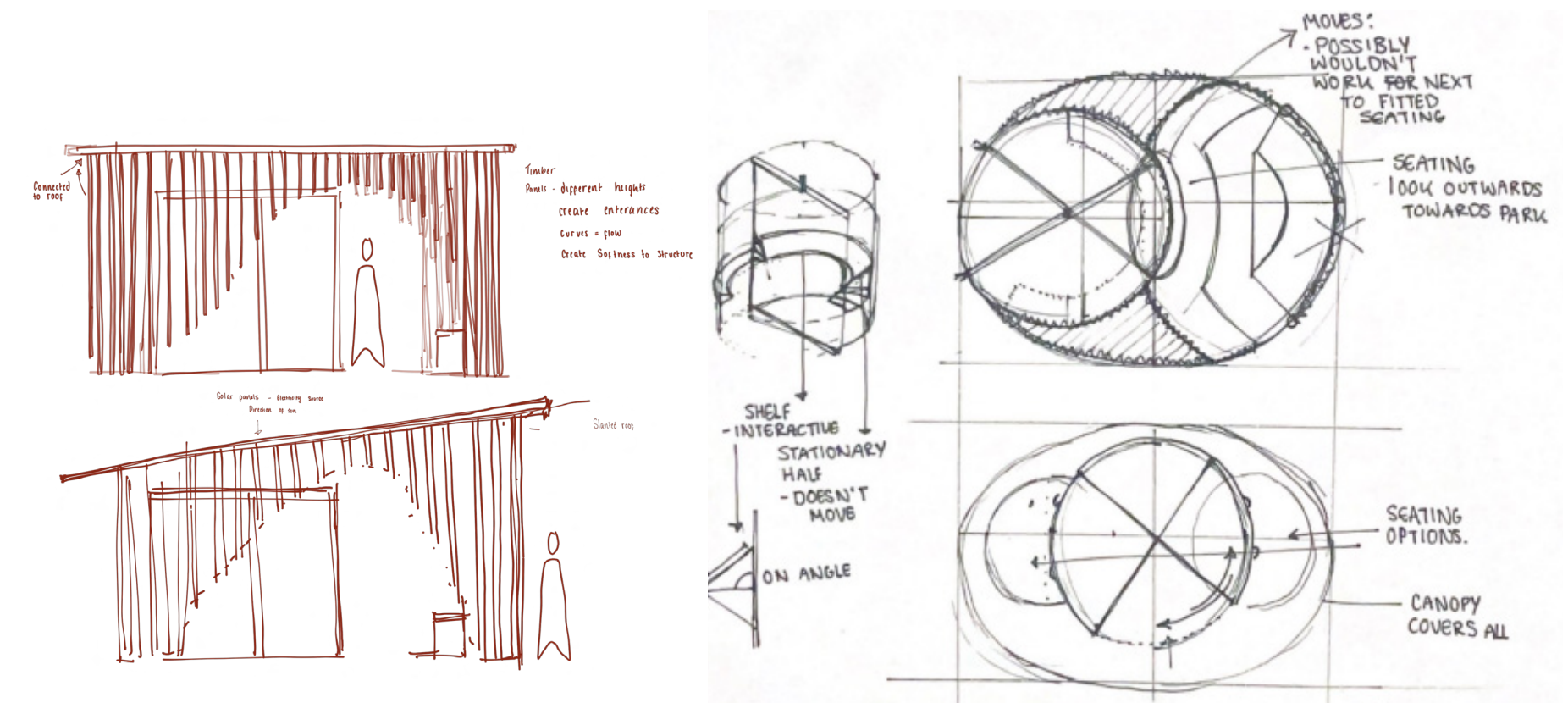


SECTION A

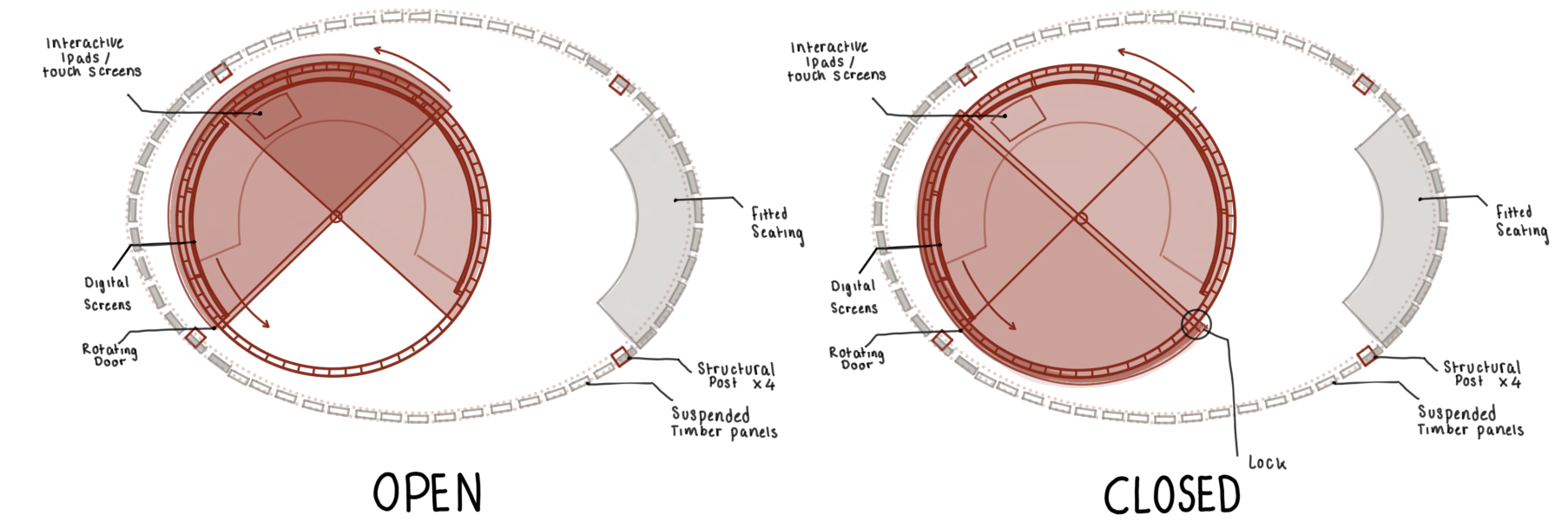


TAKEMIND

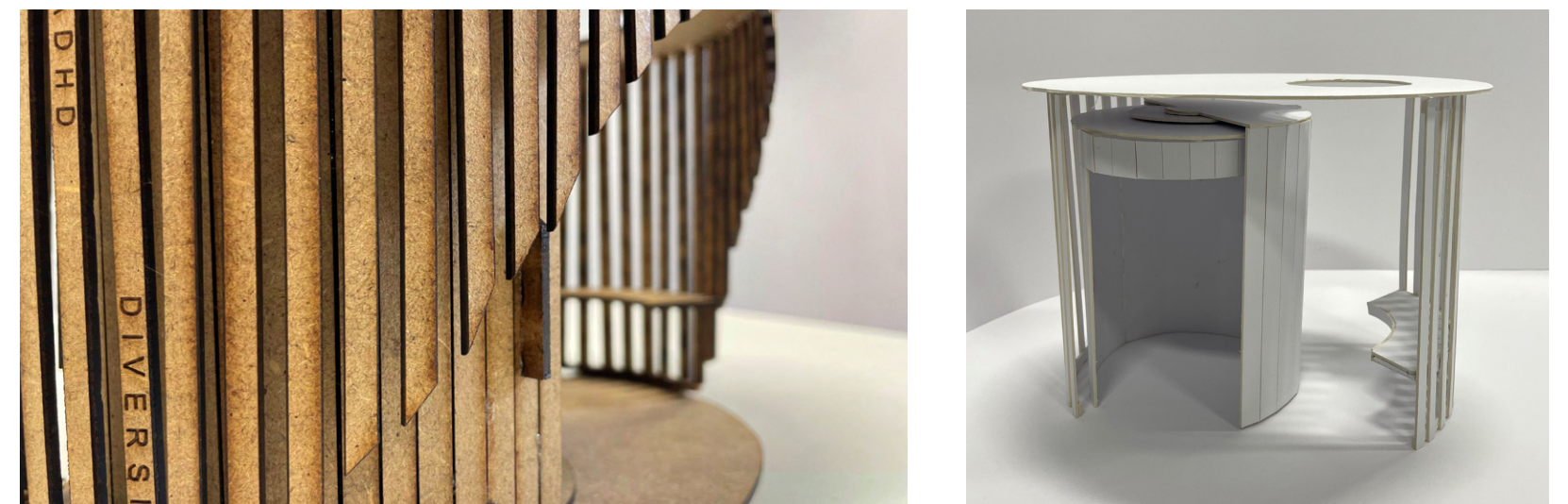
TAKEMIND is a sensory information experience supporting the neurodiverse community, especially university students who wish to find out about neurodiversity and what support is available. It provides a hub where individuals can be signposted to areas of the university that would support them in their individual needs. This informative pop-up also raises awareness and tackles the stigma around neurodiversity. It offers a place where students can gain further knowledge, freely ask questions, be signposted to obtain further support and create conversation around neurodiversity.



1:20 CONCEPT MODEL - CARD
Illustrating turning mechanism of the structure



MODEL MAKING



1:20 FINAL MODEL - MDF LAZER CUT AND ENGRAVED LETTERING