

TRAID NEIGHBOURS + TRAIID REPAIR

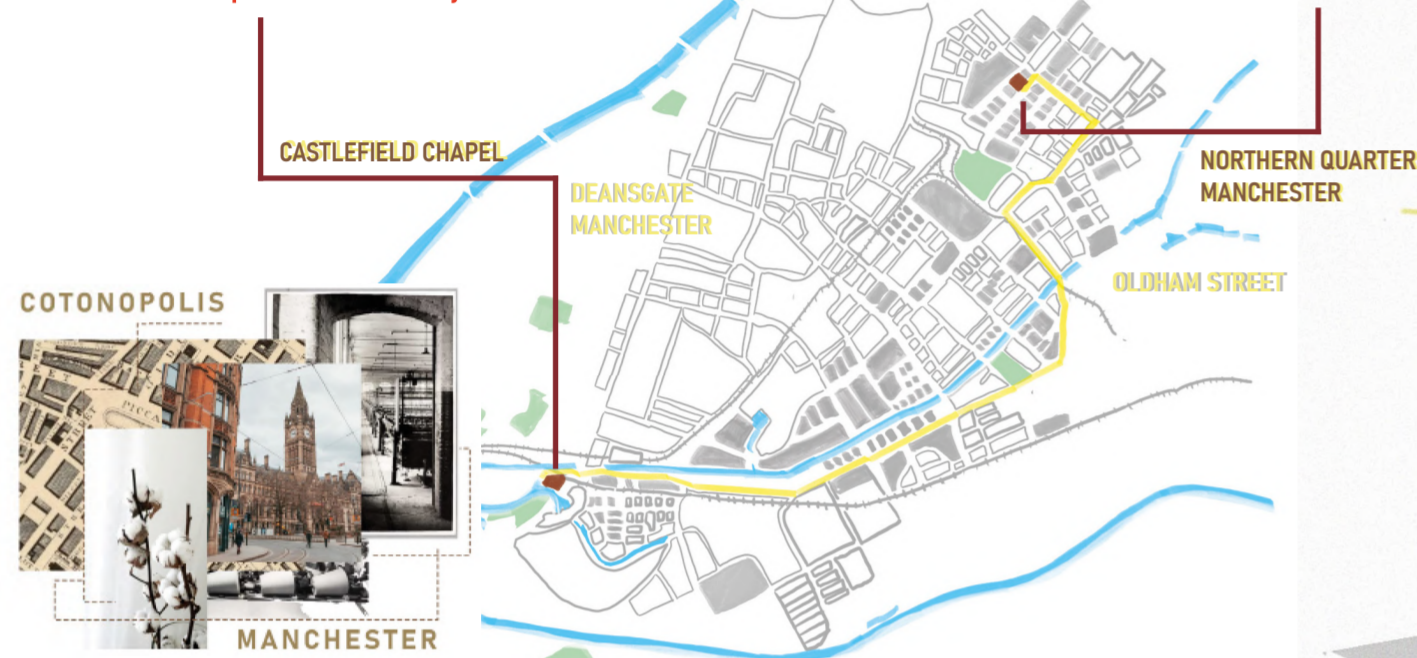
Sustainable fashion community

“TRAID Neighbours”

A community upcycle workshop and meeting space. The purpose of this proposal is to re-introduce the importance of 3R (Reuse, Recycle, Reduce) and promote the harmful effects of fast-fashion; to improve craft skills and increase the awareness of sustainable fabric. The project aims to build a sustainable community towards consumer behaviour in fashion by providing knowledge and educational space, tackling climate change issues and resource depletion caused by fast fashion.

“TRAID Repair”

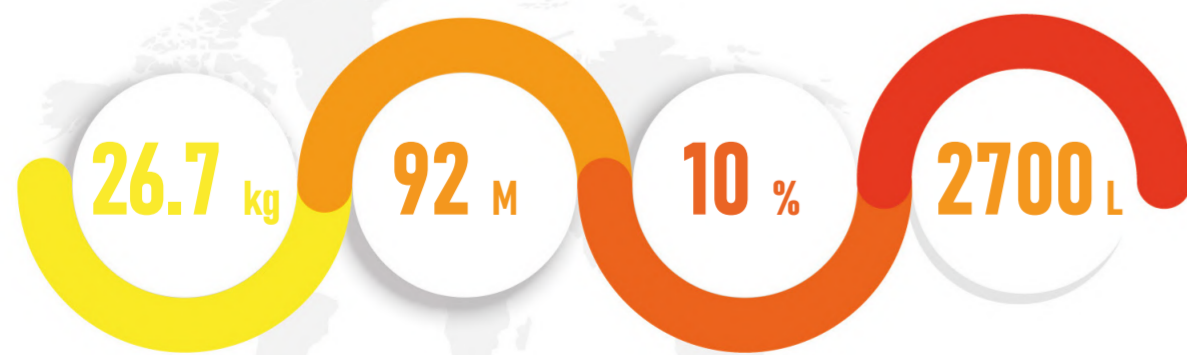
A pop-up store of TRAIID Neighbours. The store will be located in the city centre, aim to encourage people to know more about TRAIID activities and take part in community upcycling workshops. This store is a blended space between repair workshops and a charity store. Creates a space where people come together to gain new skills and extend the life of their much-loved clothes.



The environmental impacts of fast fashion

COP 26

The recent Cop 26 highlighted the problem **FAST FASHION** which cause a huge eco issue to the earth. The fashion industry is the **largest polluter in the world**. The rise of fast fashion has had devastating consequences, from its reliance on **plastic fabrics** and its enormous **carbon footprint** to its erosion of **workers' right**.



UK consumption of new clothing per head (Highest in Europe).

92 million tonnes of textile waste annually, much of which is burnt or finds its way to landfill, while less than 1% of used clothing is recycled.

of global greenhouse emissions are caused by clothing and footwear production. This is more than the international flights and maritime shipping combined.

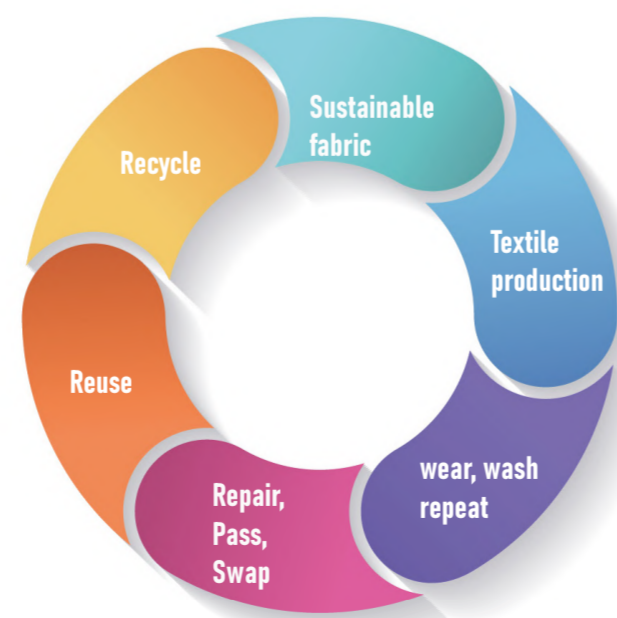
2700 litres of water is needed to produce 1 T-shirt which is approximately enough drinking water for 1 person for 2.5 years.



TRAID REPAIR RECEPTION VISUAL

CIRCULAR FASHION

The concept of circular fashion is to minimize waste in the production system which ends up with minimizing old garments being thrown to landfills.



CUSTOMER JOURNEY



TRAID REPAIR



POPUP STORE UPCYCLING WORKSHOP + CHARITY STORE

TRAID NEIGHBOURS



TRAID DIGITAL FASHION EXPERIENCES



COMPULSIVE BUYING DISORDER CONSULTATION



TRAID COMMUNITY COFFEESHOP

THE PROTAGONISTS

Designer



Curiosity

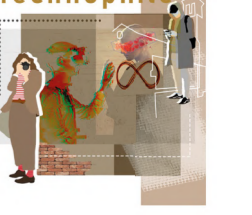
Environmentalist



The Neighbour



Technophile



The main design concept of this project is

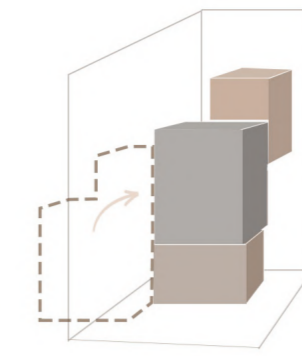
“Patchwork” A method that helps to give waste fabrics a secondlife. The connected of various fabrics refers as the idea of harmony by bringing people in the community together no matter how different they are.



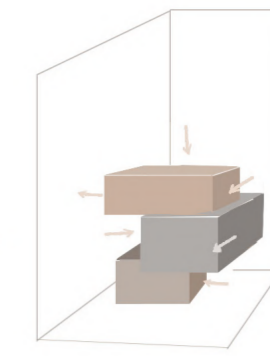
PATCHWORK
CONCEPT



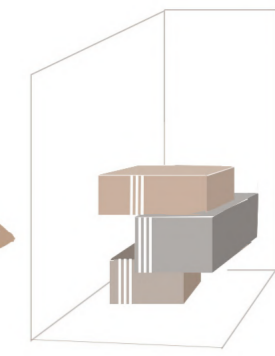
Add Volumn



Adjust to Vertical
Arrangement
along the building Void



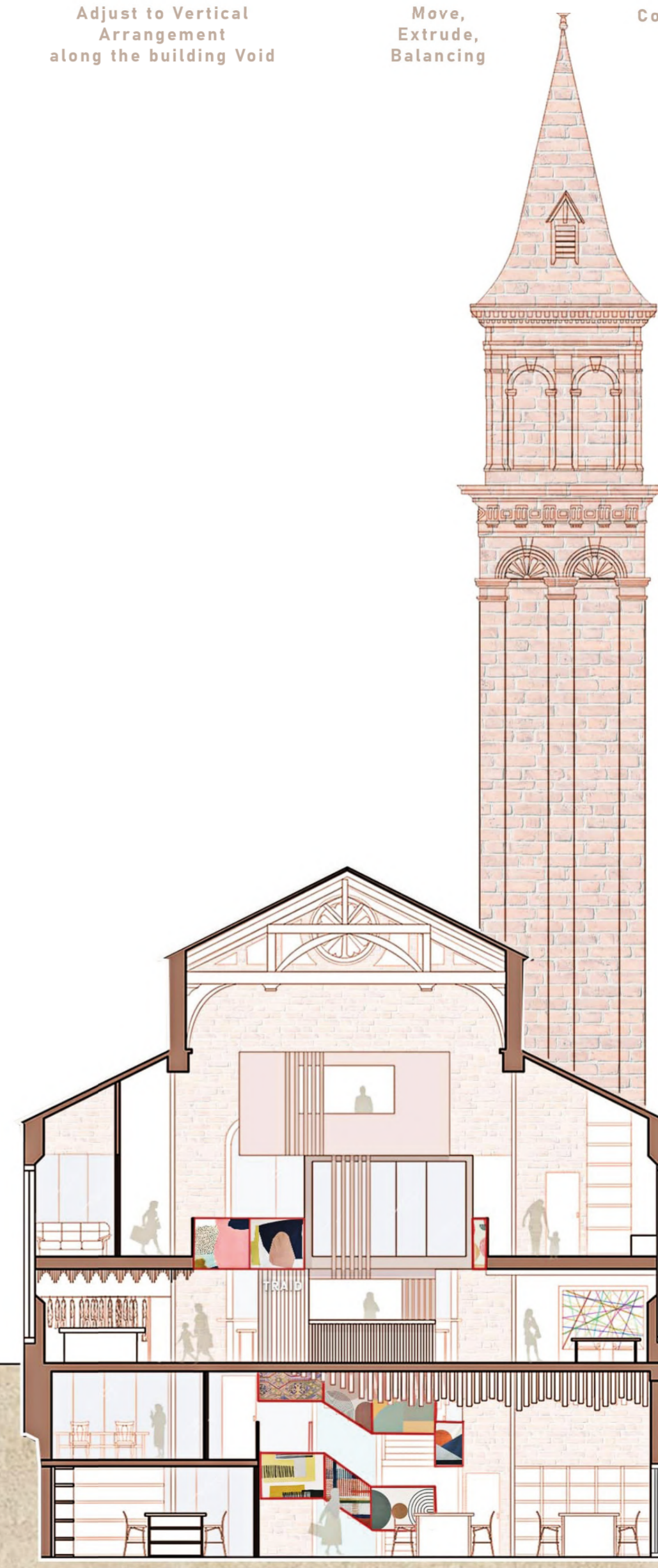
Move,
Extrude,
Balancing



Connecting

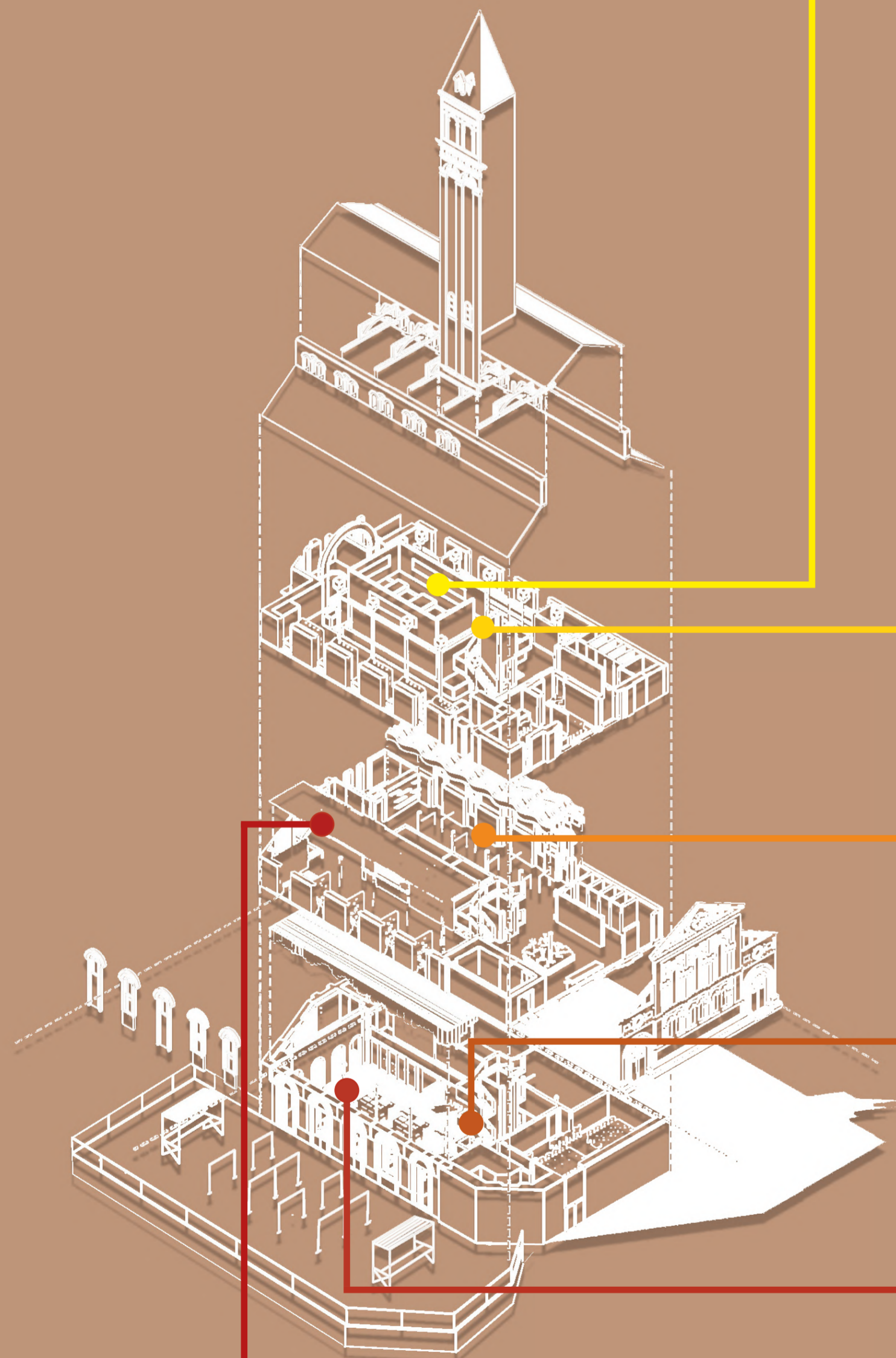


PERSPECTIVE SECTION
TRAID NEIGHBOURS

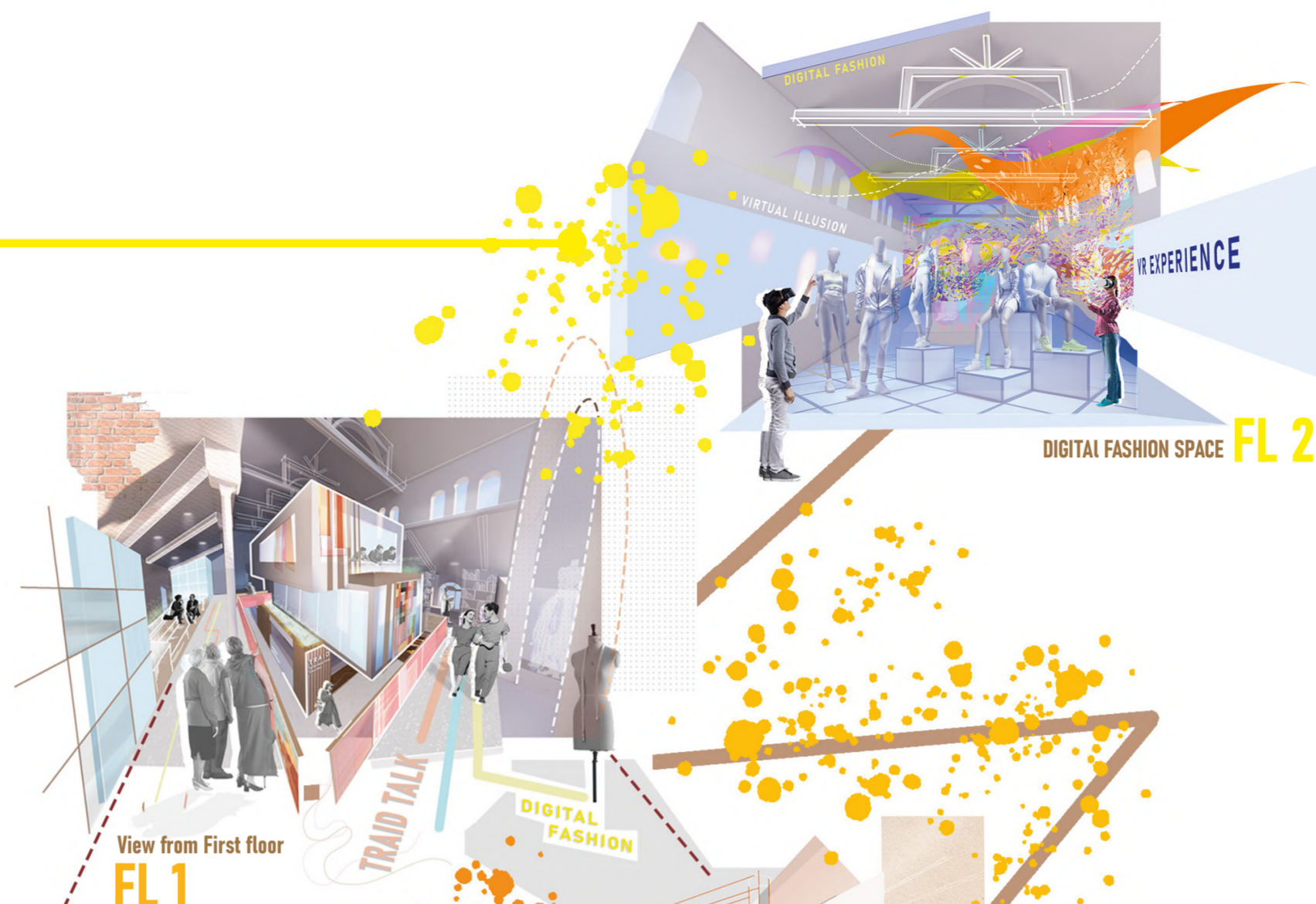


SECTION B
TRAID NEIGHBOURS

“ TRAIID NEIGHBOURS provides wide range of activities, It's a place to gather, learn and experience a world of sustainable textile and fabric “



TRAIID NEIGHBOURS
EXPLODED AXONOMETRIC



DIGITAL FASHION SPACE FL 2



View from First floor
FL 1

View of TRAIID EDUCATION
waiting space
FL 1



FL 0

View of Charity store

View of Repair Workshop
FL -1



FL -2

View of Repair Workshop



View of TRAIID community hub

Benefits of reintroducing Sustainable fashion in local community

The idea of sustainable fashion hub will give the positive impacts on **ecology, environment and individual personal well-being**. It also helps to **educate younger generation to pay attention to the current global issues** and provide a meeting space for all people which also takes part to **fight the climate crises**. Upcycle clothes will make people to be more a **conscious consumer with more awareness of how consumption impacts society** at large.

Digital fashion Experiences

Virtual fashion is the alternative solution to **tackle waste and fashion issues**. It generates the biggest reduction in environmental impact, which uses **97% less carbon** than the production of physical garment. TRAIID Neighbours provide this immersive experience space for people to get to know more about digital world since it will be the **next best thing in fashion**.

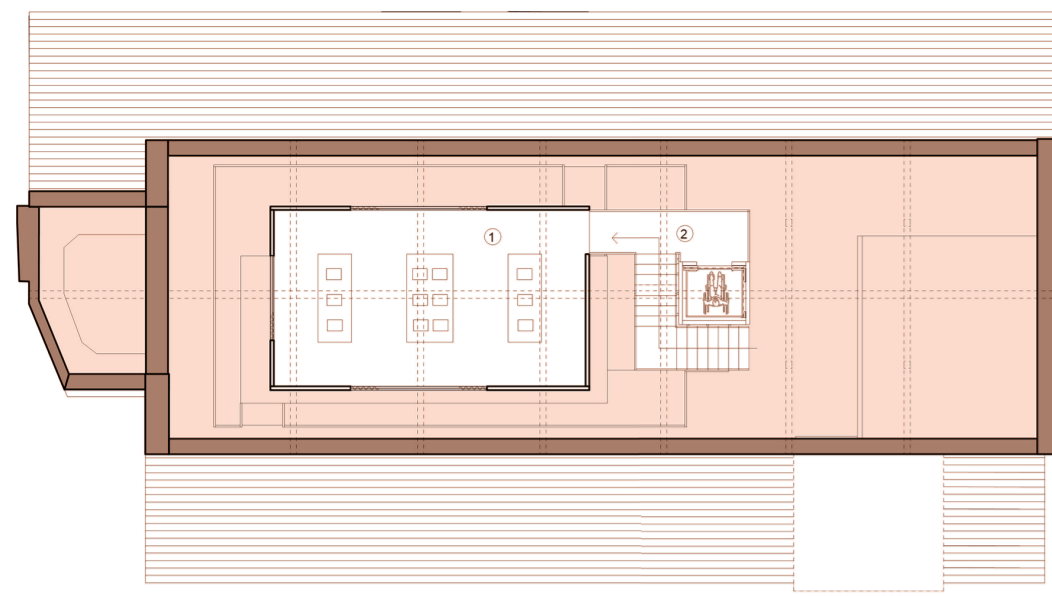
TRAIID talks and TRAIID Sustainable Class

TRAIID provides a sustainable fashion class and special TRAIID TALKS event, which aims to **spread the knowledge of sustainability, helps to raise awareness of climate change, pollution and environmental issues** and guides on how can people helps to **reduce the impacts of fashion in the community**.

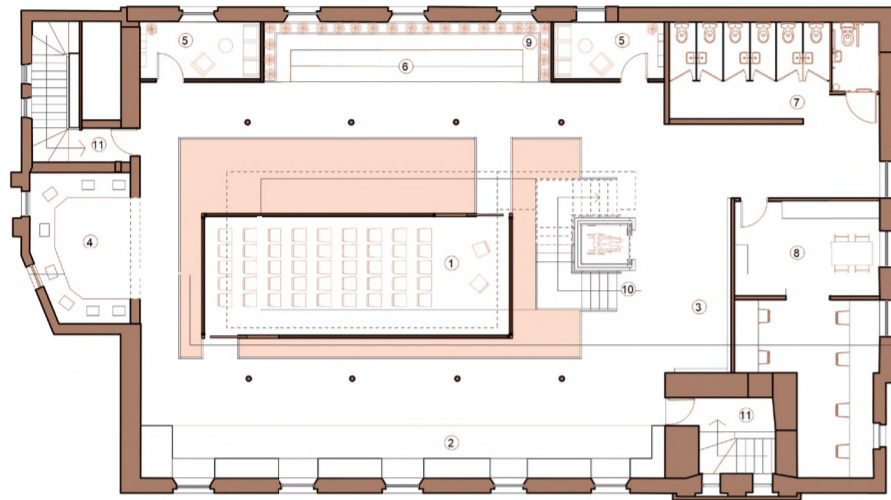
Self production repair workshop

TRAIID workshop is an open space that designed to **allows collaboration and interchange of skills and experience**. The workshop is open to all skill levels, from no-experience to an expert designer. It's not only enhance skills and creativity on upcycling fashion but also **minimise the amount of discarded materials** sent to landfills and better for the planet. Users just have to bring their old item to upcycle, all equipments are provided in TRAIID Neighbours.

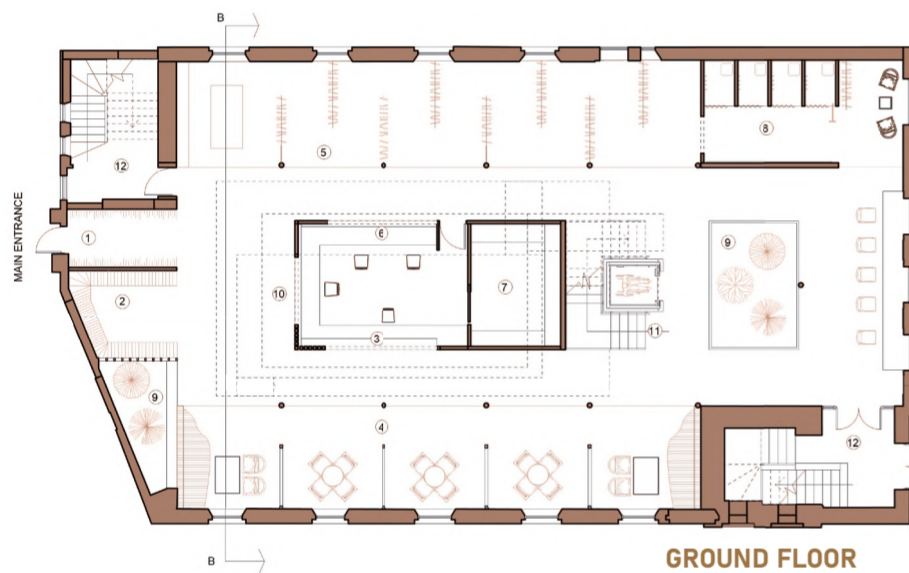
TRAIID
NEIGHBOURS



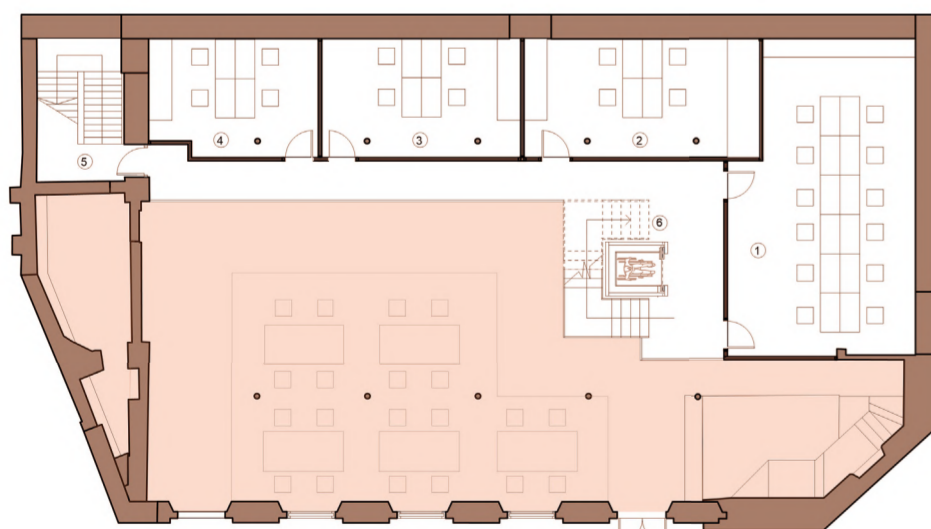
SECOND FLOOR



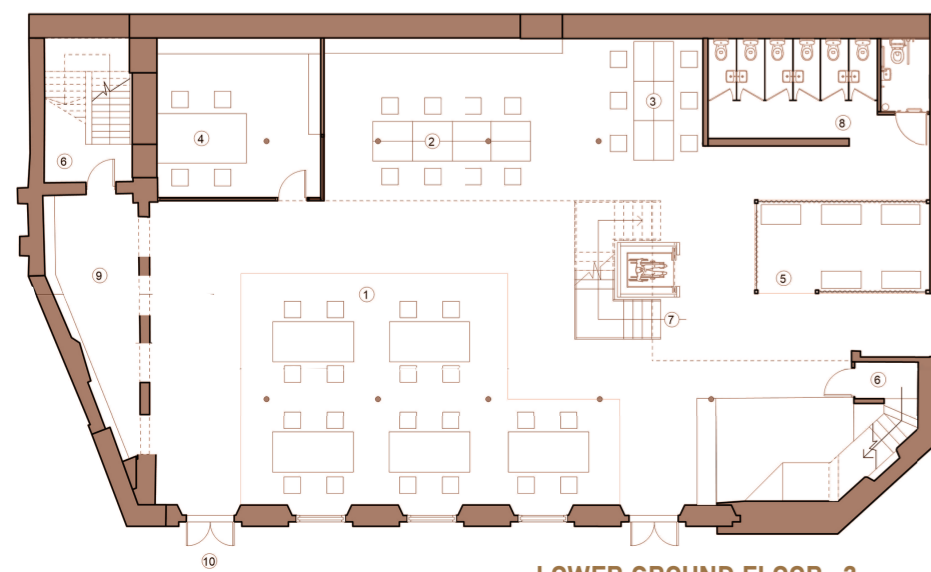
FIRST FLOOR



GROUND FLOOR



LOWER GROUND FLOOR -1



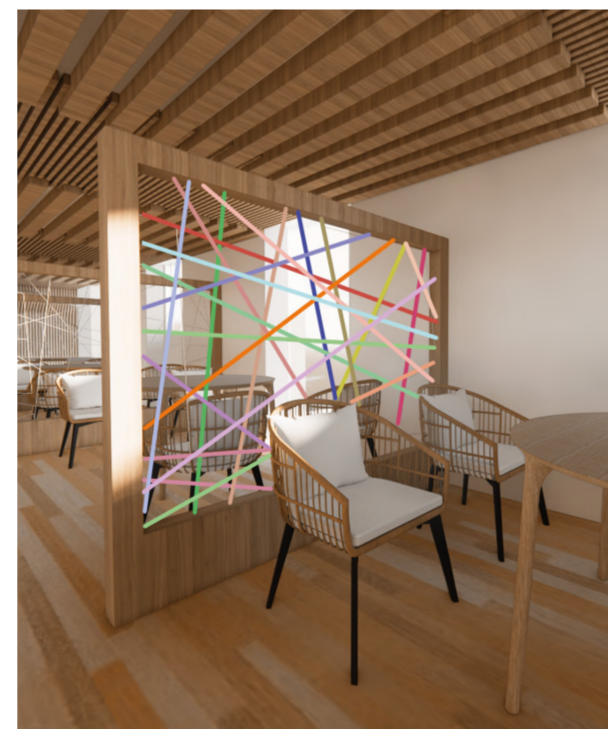
LOWER GROUND FLOOR -2



- Second Floor**
- Digital Fashion experience
 - Lift + stair
- First Floor**
- Traid education
 - Reading area
 - Traid campaign wall
 - Recycle fashion exhibition
 - Consultation room
 - Seating area
 - Toilets
 - staff room
 - Inner green
 - lift and stair
 - fire exit
- Ground Floor**
- Entrance tunnel
 - waiting area
 - Traid coffee
 - Cafe seating
 - Traid charity store
 - store reception + donation spot
 - Storage
 - Fitting room
 - Inner green
 - Information center
 - stair and lift
 - Fire exit
- Lower ground floor (-2)**
- collaboration space
 - weaving and knitting zone
 - sewing zone
 - Tie-dye and painting room
 - printing room
 - fire exit
 - lift and stair
 - Toilets
 - Material lab
 - Outdoor seating and clothes drying space
- Lower ground floor (-1)**
- workshop for beginners
 - sewing and weaving workshop
 - fabric printing workshop
 - knitting workshop
 - Tie-dye workshop
 - fire exit
 - lift+stair

Design Concept

Plans are developed using the passivehaus approach by maximize the use of **natural lighting** in the interior, which helps to **minimizing electricity use, better indoor air quality and maintaining a comfortable temperature all year round**. The workshop collaboration space is located in the south side provided with large windows, giving natural sunlight and a nice view of the canal and green space outside. **Thick insulation** will be installed to ensures that the building is well insulated and stops heat gained from the sun leaking out to have a long term effects on **highly energy efficient**.



VIEW OF THREAD PARTITION



VIEW OF TRAIID COFFEE

3 Concept Strategy



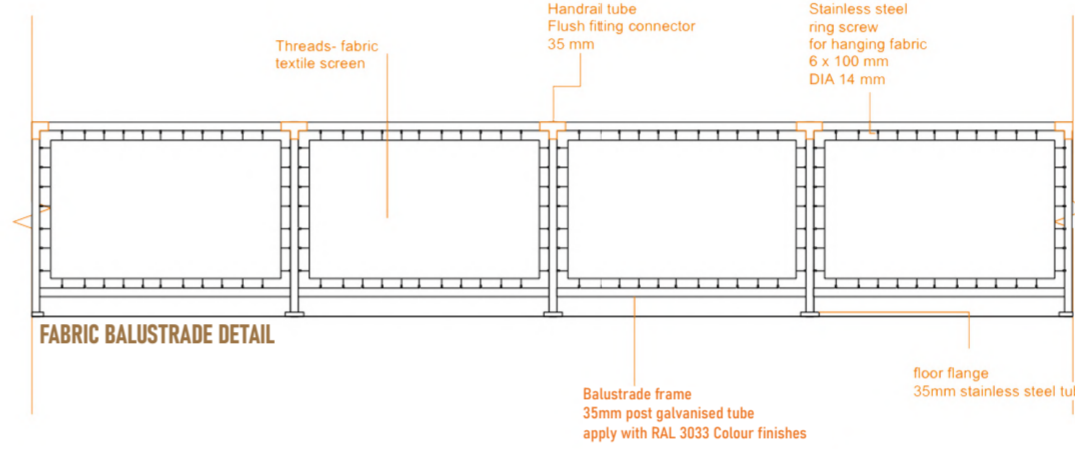
FABRITECTURE



JUXTAPOSE



FLOW



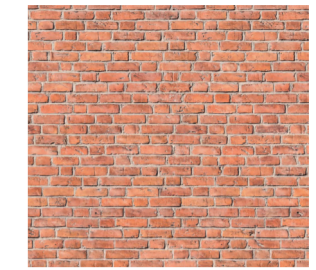
FABRIC BALUSTRADE DETAIL

The main key movement that draw people in though every floors is the use of fabrics in the interior. The building represent itself through the use of fabric balustrades which made from the reuse of discarded garments. The Balustrade also act as a gallery showing the mix of several fabric techniques such as patching, knitting, fabric painting, embroidery. Allow visitor to enjoy the beauty and creation of textiles throughout the whole journey. It also showing the juxtaposed of lighter element that use in fashion such as textile, and the architectural building material like red bricks or hard material like steel.

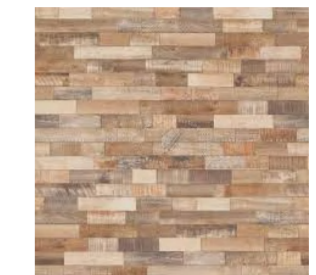


Parametric ceiling will be installed in charity store and the workshop area, by using light sustainable fabric. This ceiling installation will helps to lead people in, enhance the immersive experience and create a warm welcoming environment to the space. The light eco-friendly silk material also created a mesmerizing effect and had everyone excited from the moment they walk in.

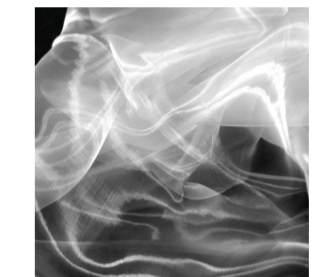
SUSTAINABLE ELEMENTS



RED BRICK EXISTING BUILDING MATERIAL



RECLAIMED WOOD



ECO-FRIENDLY Fabric Feather Silk for wall installation



Sustainable Vinyl flooring



REUSED TEXTILE AND FABRIC For balustrade and threads partition walls



RECYCLED STEEL



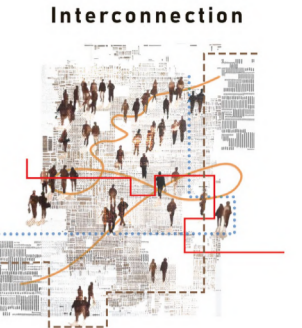
GARDEN FENCH POST



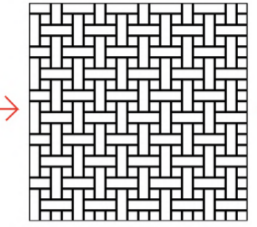
BARRISOL 100% Recyclable material

TRAID REPAIR DESIGN CONCEPT

The concept of this project is inspired by the words "interweave, patchwork and interconnection". The floor plan is designed to have a connected journey like a patchwork which aims to increase the flow movement in the store.



One characteristic of this store is **connected furniture** which combines the workshop space and retail area. The store showing the contrast of the use of **re-purpose wood, recycled steel and fabrics**. Textile walls and fabric ceilings are also used in the space to attract people in and give a hint of the characteristic of TRAIID Neighbours.



Ceiling Concept Development (Interweave + Flow)



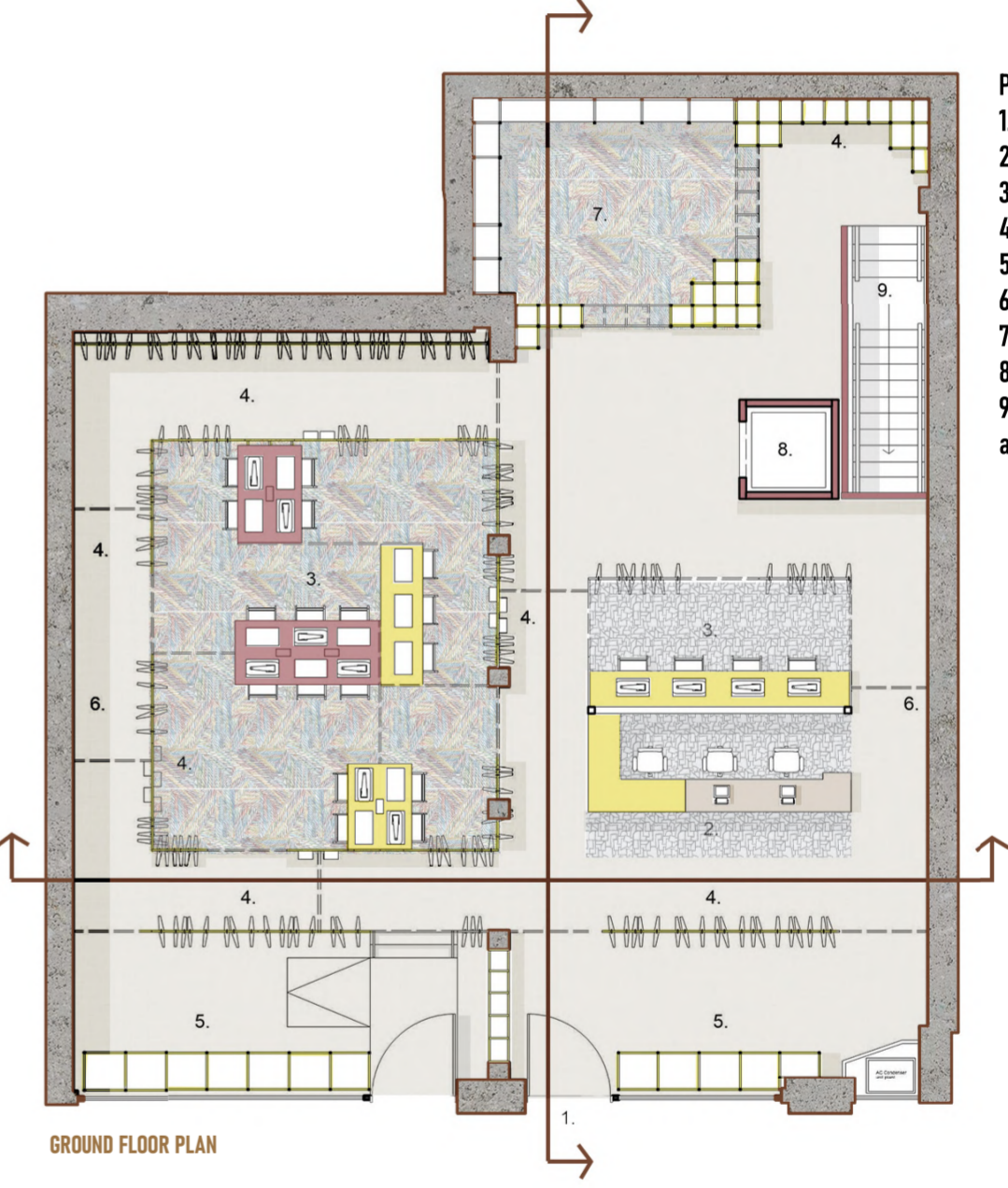
Material Lab

VIEW OF MATERIAL LAB

VIEW FROM THE STREET



VIEW OF BLENDED SPACE RETAIL + WORKSHOP

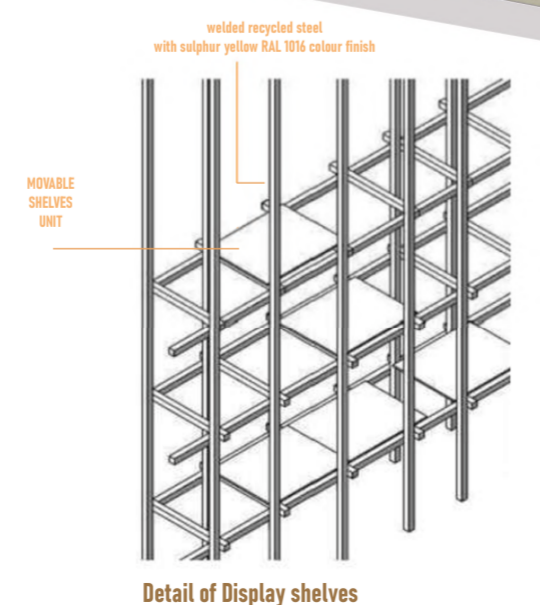
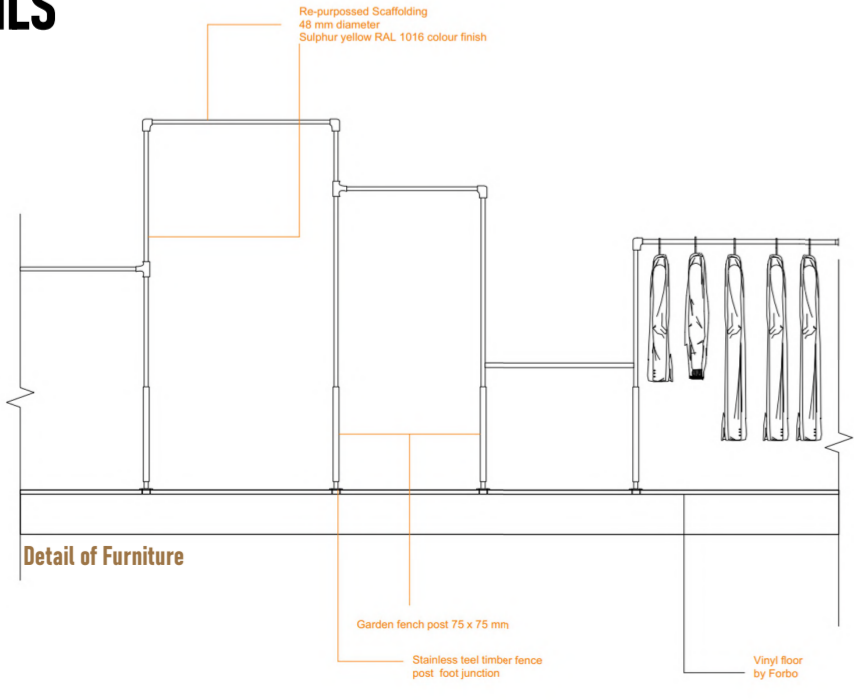


GROUND FLOOR PLAN

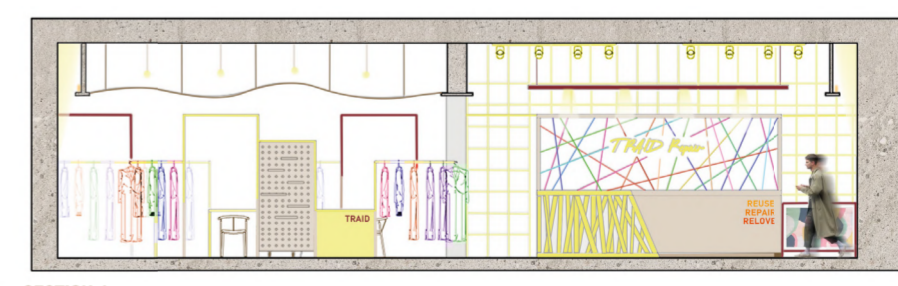
- PLAN KEYS:
1. Main Entrance
 2. Reception
 3. Workshop area
 4. Retail area
 5. Shop front display
 6. Fabric art walls
 7. Material lab
 8. Lift
 9. Stair to fitting room and toilets

The design of both projects intend to explore ways to solve the environmental impact from fashion by starting from individual responsible through the community project. Also aims to increase people's understanding and reconnect them to the community.

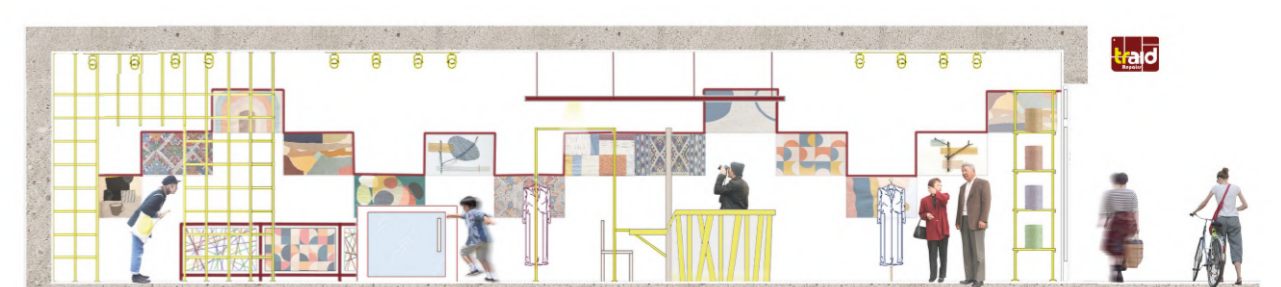
DETAILS



WALKTHROUGH ANIMATION



SECTION A



SECTION B