

MUSIC FOR ALL

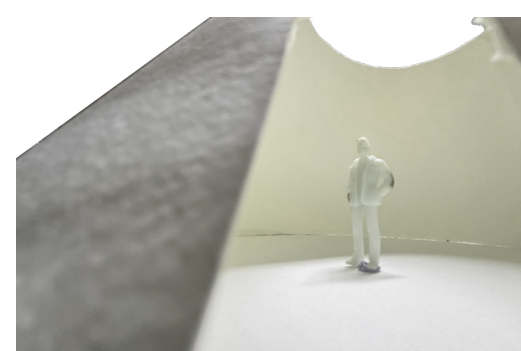
music provision for marginalized social groups - 'the Bargees'

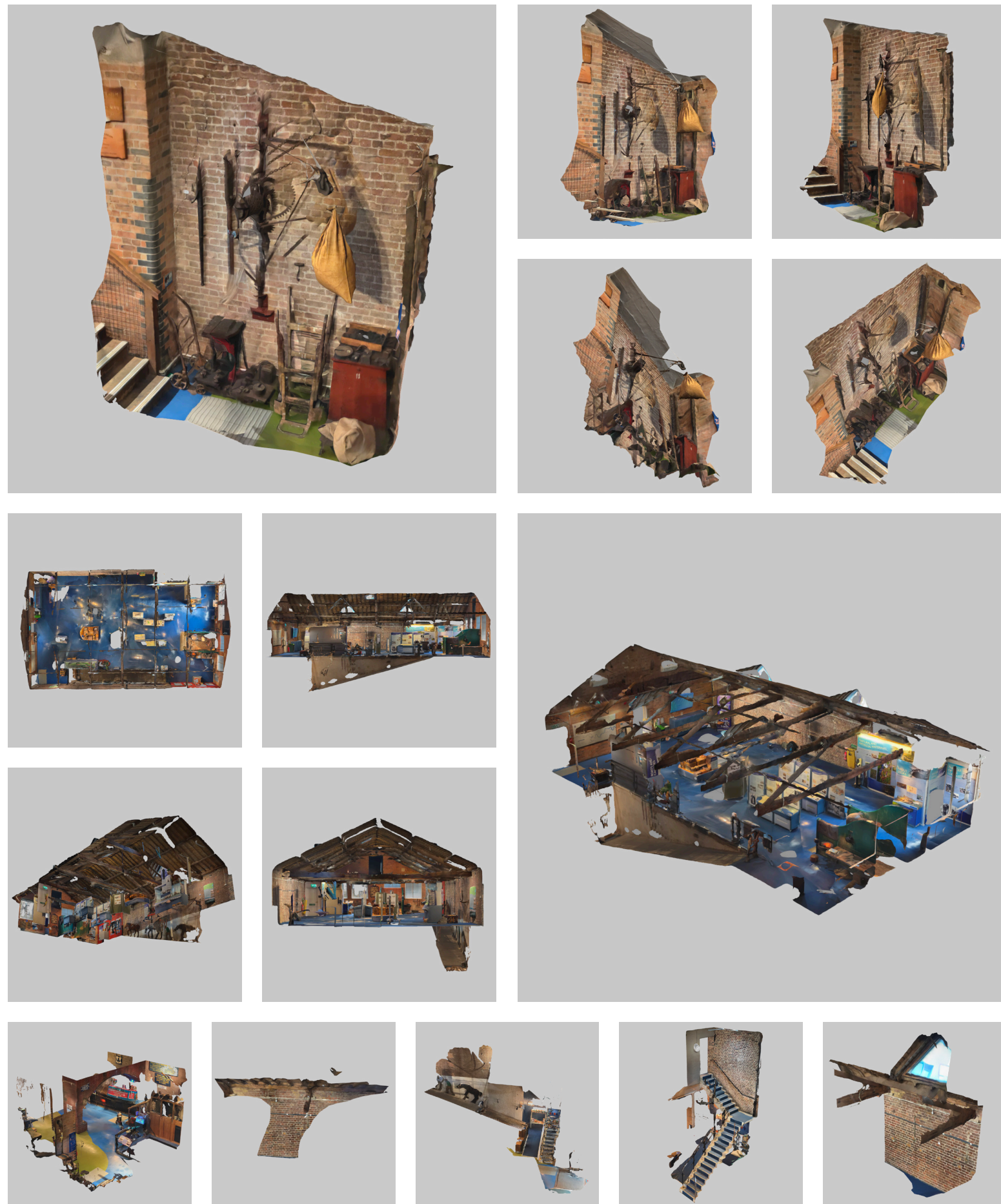
This project creates inclusive spaces for the 'hidden' community of travelling boat dwellers known as 'Bargees', an often overlooked and underrepresented group of people living transient lives on narrowboats. It proposes transforming the London Canal Museum into a Creative Music Hub where everyone can rent or store musical instruments, engage in musical tuition, and participate in performances. Life on a narrowboat, often chosen due to socioeconomic constraints, has limitations; restricted storage space, variable temperature extremes and without a permanent mooring and postal address, this marginalised community can experience little access to cultural engagements. This design reimagines the museum as a place not just of history, but of active community-making, ensuring that all people, regardless of their living conditions, have equal access to the transformative power of music and shared cultural experiences.

"60.6% of the bargees reporting that they feel lonely or isolated sometimes or always."

"Do you have enough room for everyone on your boat? - 20.9% said No."

<https://www.wiltshireintelligence.org.uk/wp-content/uploads/2024/05/Boaters-External-Final.pdf>

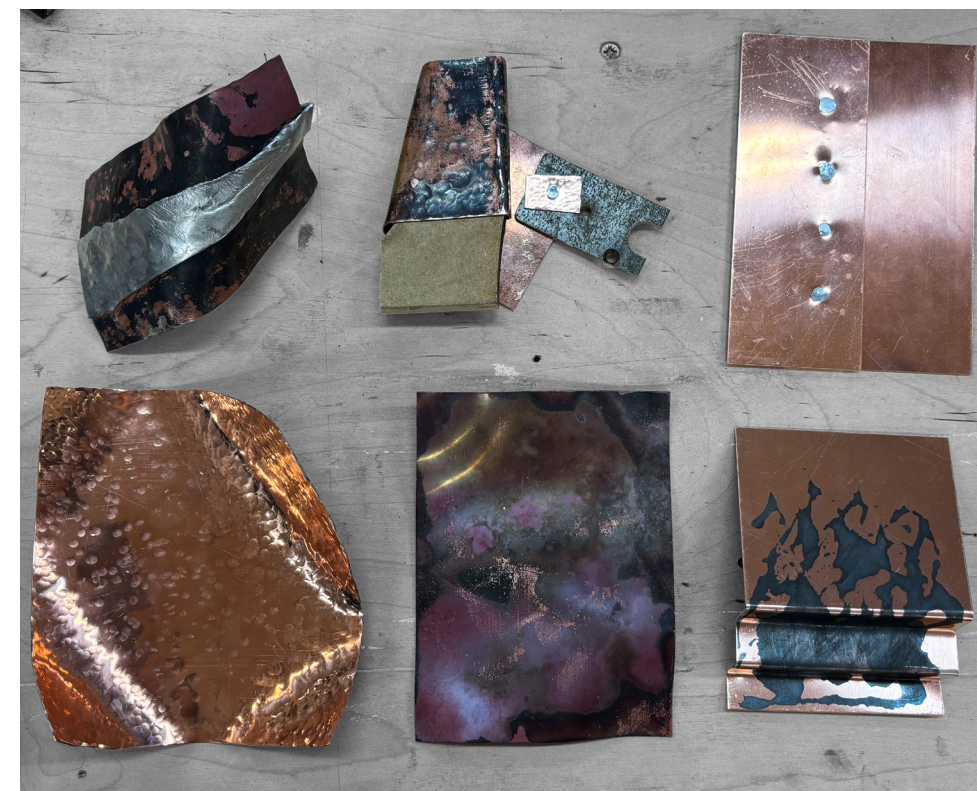




By visualizing the site in three dimensions, I can gain a clearer understanding of its spatial characteristics. This approach also enhances my ability to develop design concepts effectively and communicate my ideas more efficiently throughout the design process.

site analysis

The museum is located near one of London's busiest stations, King's Cross. Neighbourhood is tucked away from the main road offering a quiet contrast to the surrounding hustle. Entering through the main entrance, visitors are greeted by a half-sliced narrowboat, allowing us to experience the confined space of a traditional canalboat. With its low ceiling and narrow walls, the space felt almost claustrophobic. Next to the boat, an arch made of fake bricks has been installed. Walking past this area, the ice well beneath the floor appears. A staircase next to the well leads to another entrance / exit that connects to the waterside. On the upper floor, there are displays that is featuring about the canals history. Some are interactive and engaging, but others feel less. Overall, I found the layout somewhat overwhelming because it felt a bit cluttered and the building appeared aged and deteriorated.



Video of the workshop

Outcome from the workshop

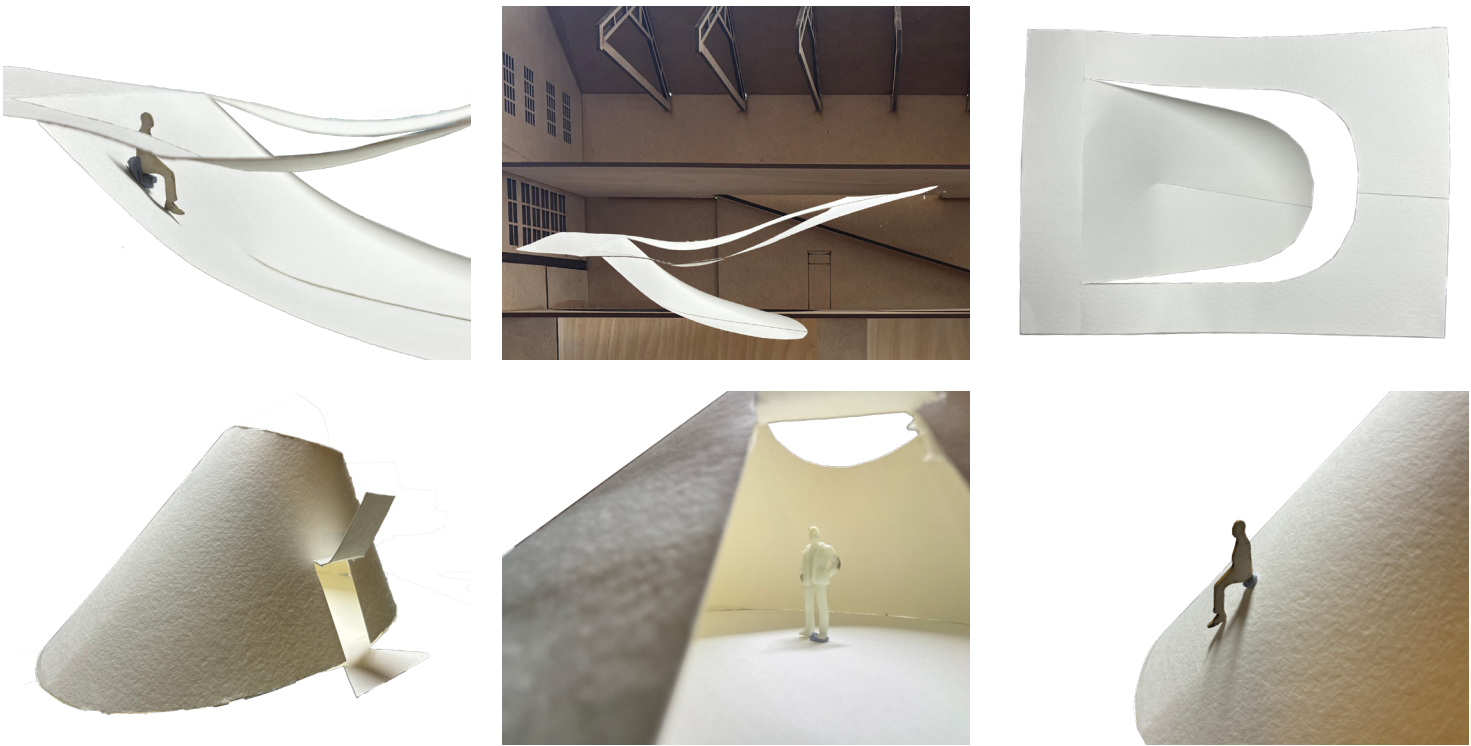
Top 3- connections made between copper and another 'found' materials.

Bottom 3- evidence of a distinct property of

material testing

iteration

Iteration of the audience and studio spaces

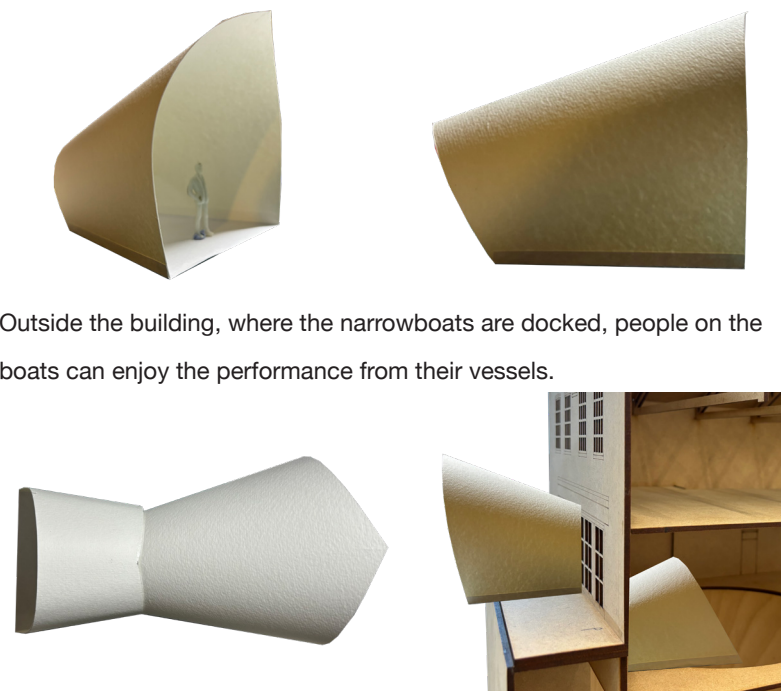


People can sit on the slope to watch the performance. Inside will be a room with a great acoustic where people can play instruments. This room gives privacy when they are having a private learning session.



The slope is where people can sit and watch the music performance. Underneath the slope, it will be a learning space, where people can learn musical instruments. The ceiling window provide more light.

Iteration of the concert stage inside and outside

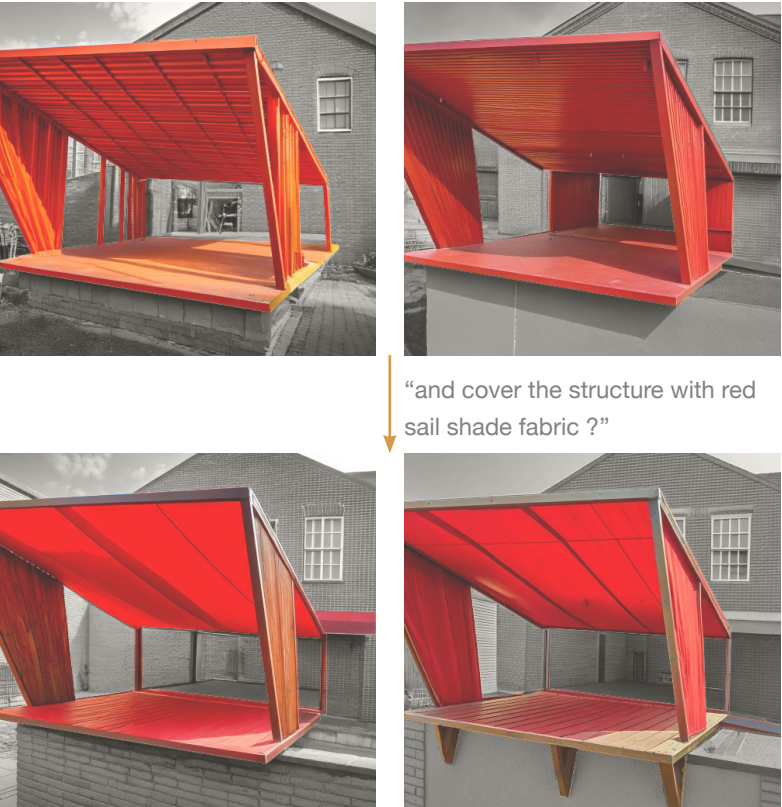


Outside the building, where the narrowboats are docked, people on the boats can enjoy the performance from their vessels.

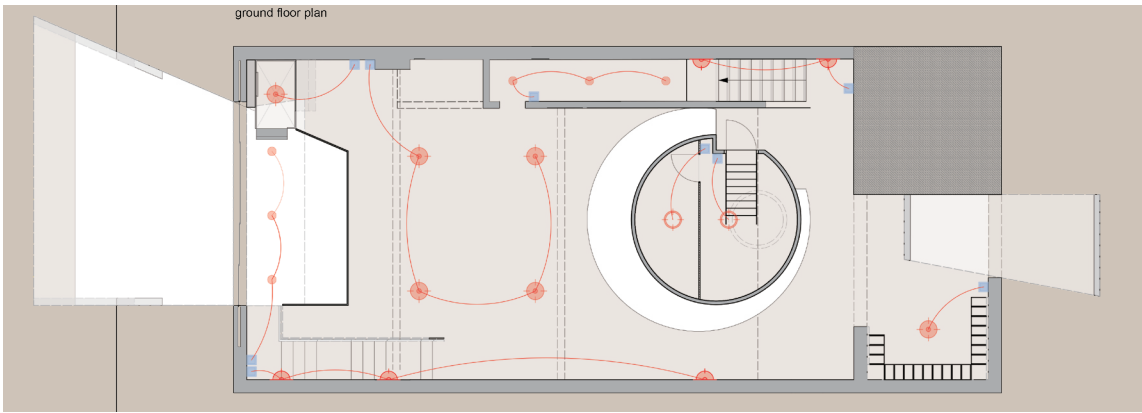
Designing an indoor stage allows performances to take place even in bad weather. By entering the building, community members can **connect with one another**, turning the space into a **vibrant community hub**.

Exploring with **AI** as a tool to see my design when it's built in the real life.

"could you design the outside canopy using Red oxide primed i beam?"



Lighting plan



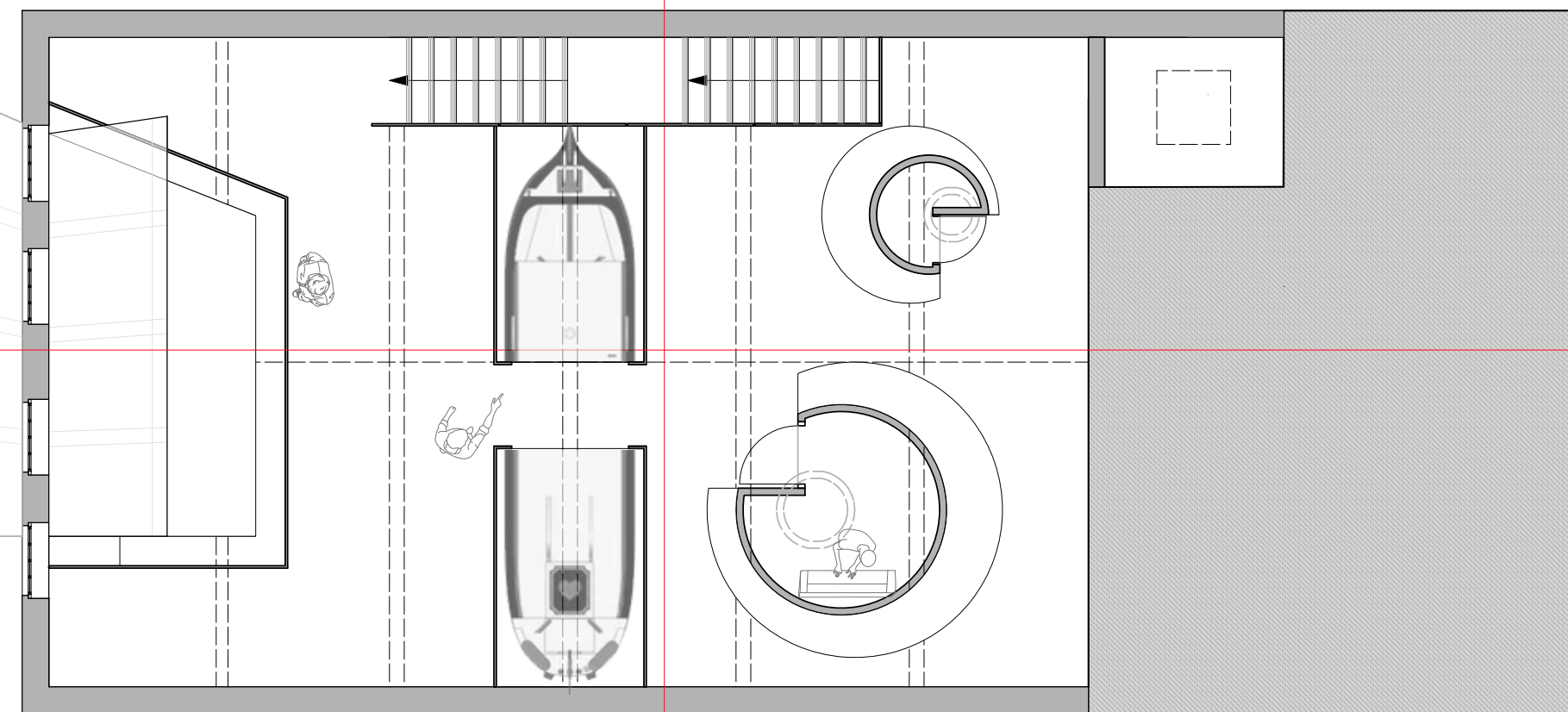
Bring new voice and generation through music.



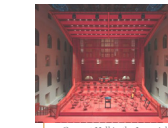
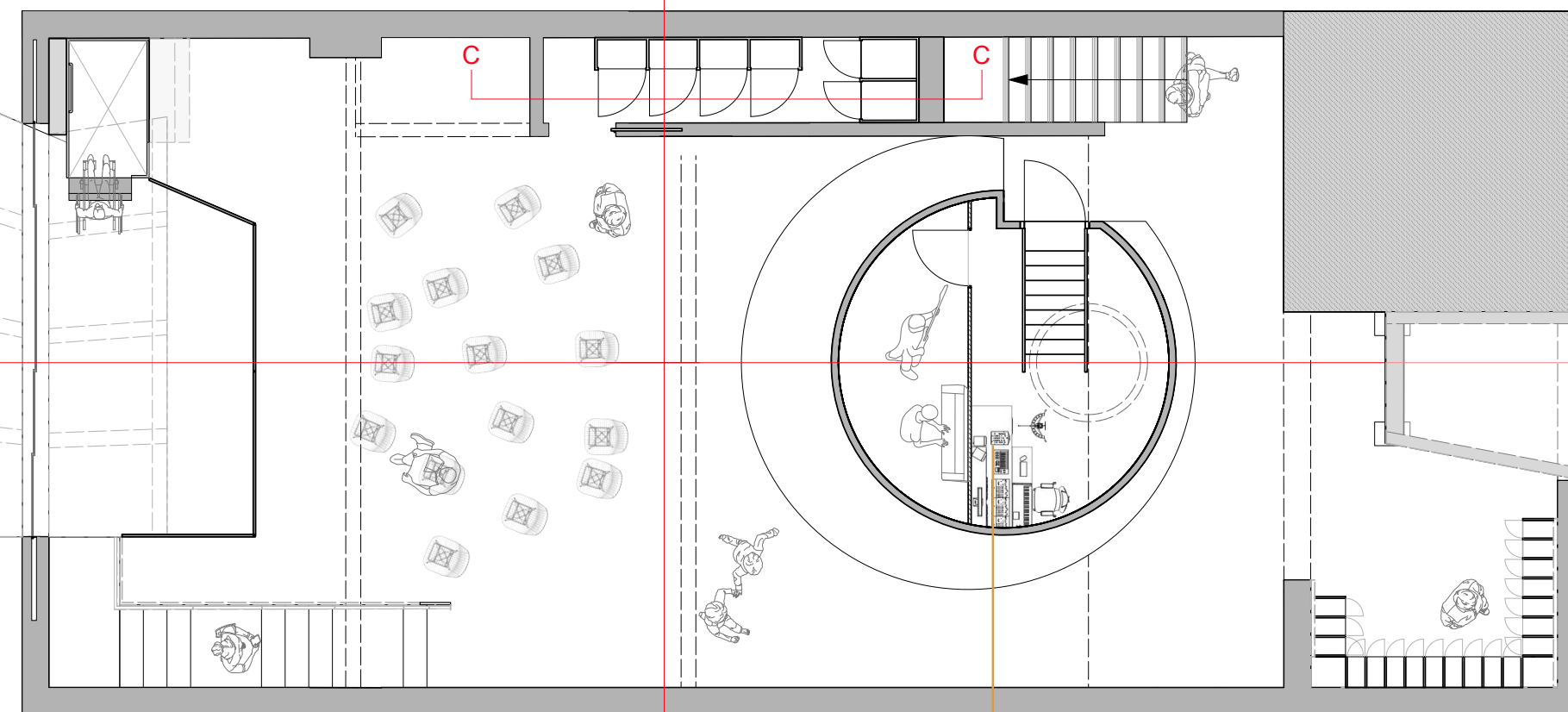
London's canal boat community is vibrant and diverse, yet somewhat isolated from its surroundings. Since boaters must relocate every two weeks, they don't have a fixed place with consistent neighbors. Transforming this building into a space where bargees can **meet up with other bargees** and enjoy performances, **learn** music, and **store their instruments** would be highly beneficial. Given the limited space on narrowboats, storing large instruments onboard is inconvenient. This facility would provide a dedicated space for instrument storage, ensuring that people can still engage with music despite their restricted living space.

plans

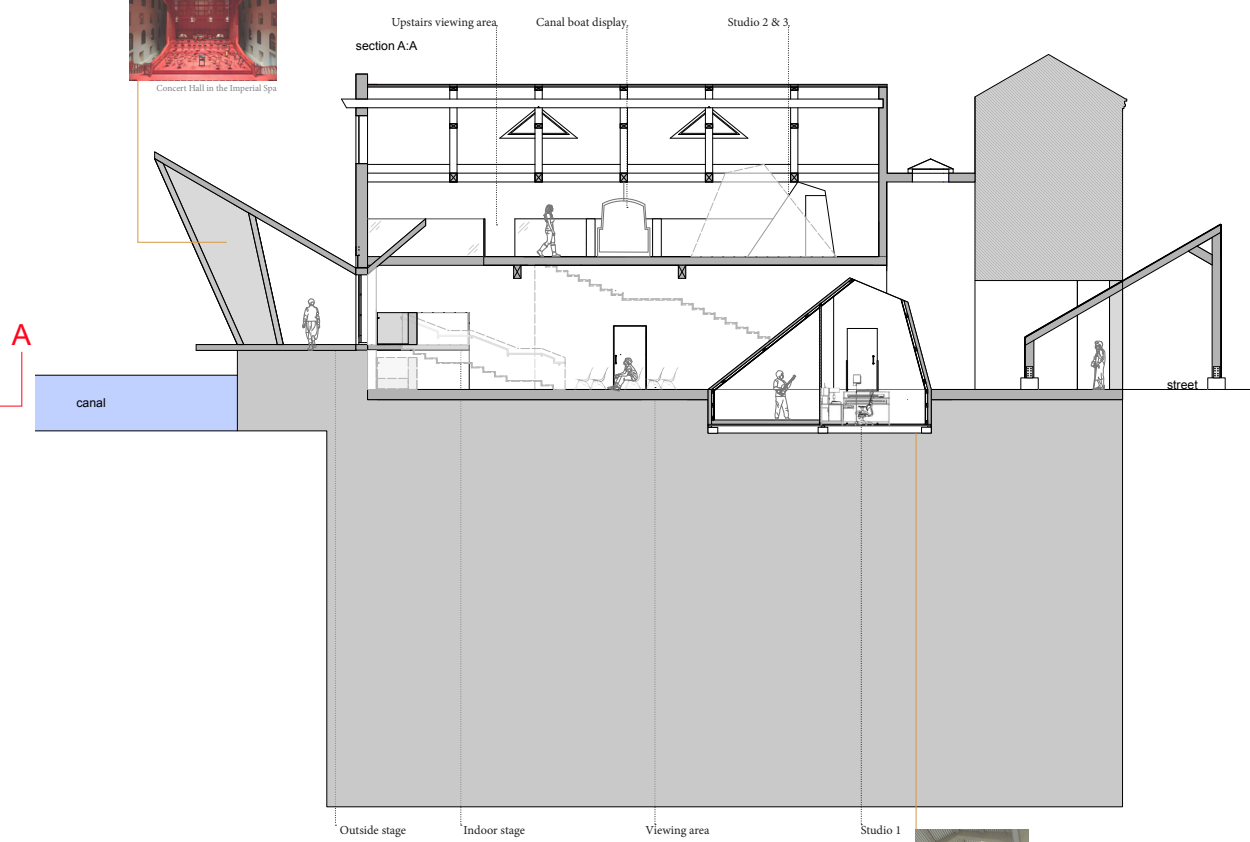
first floor plan



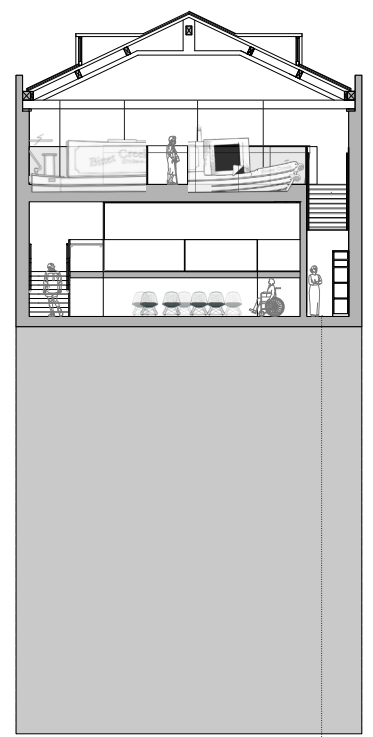
ground floor plan



Concert Hall in the Imperial City



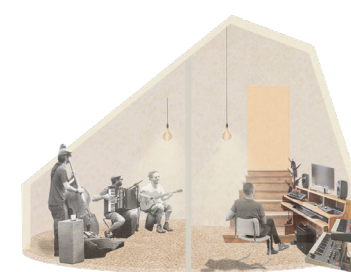
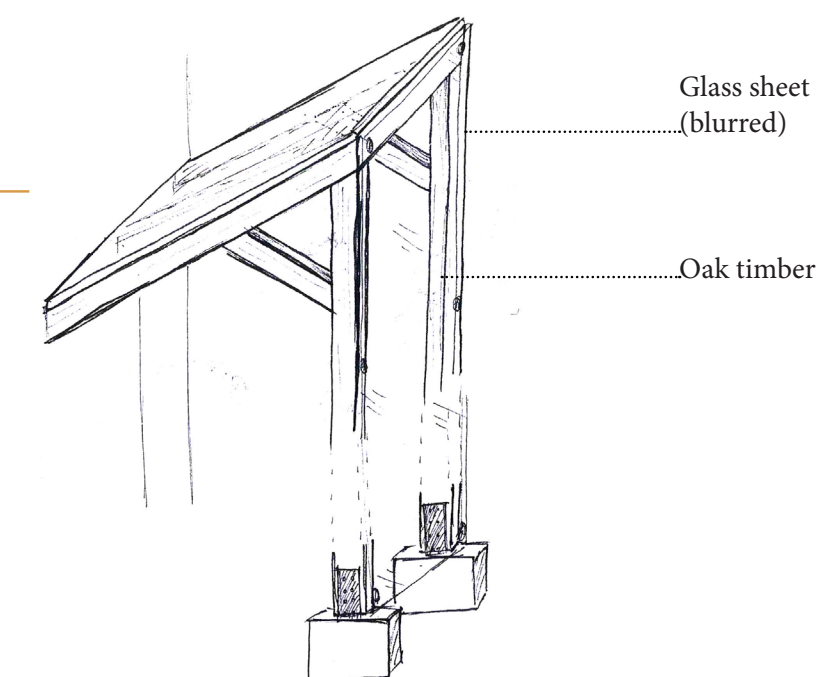
section B-B



Lumen United Reformed Church in London



sections



Lumen United Reformed Church in London



River Scape in London by Aukett Swanke

MUSIC FOR ALL

music provision for marginalized
social groups - 'the Bargees'

