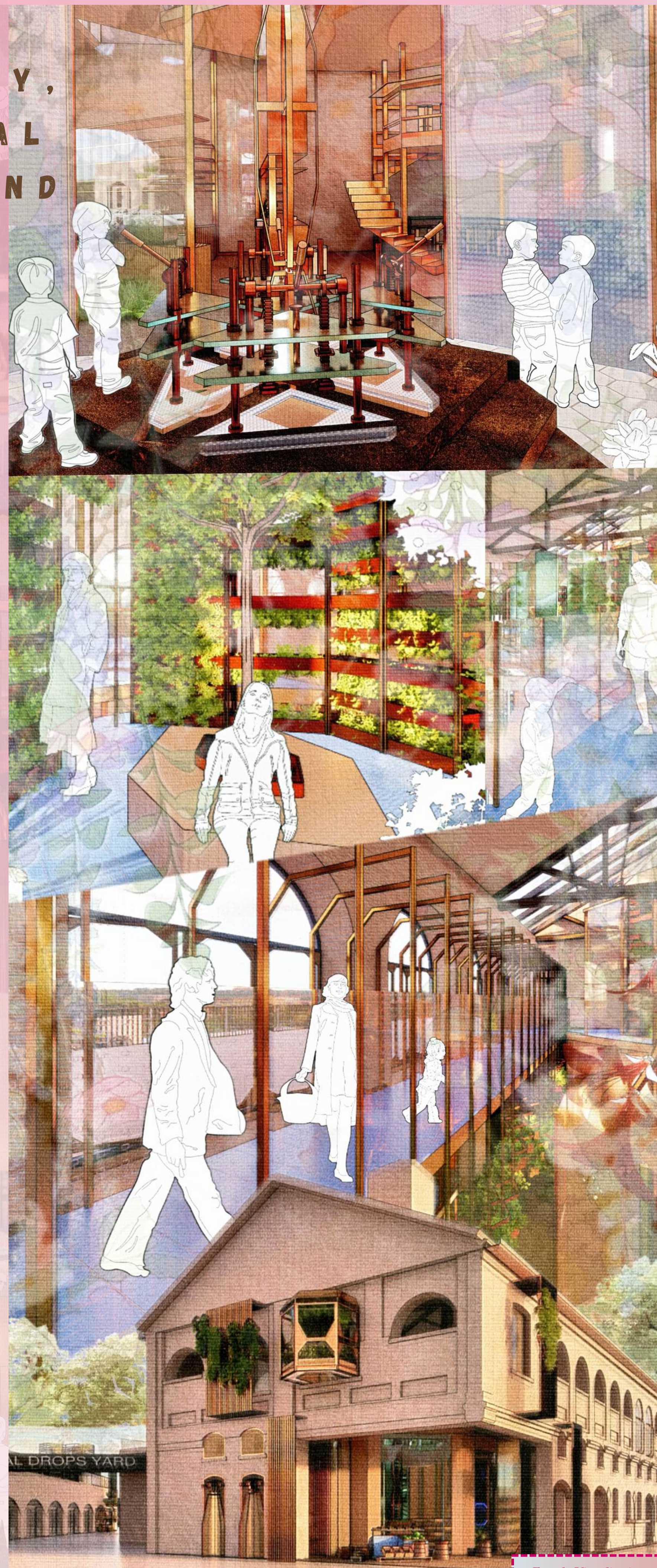


SOCIAL JUSTICE, DIVERSITY, EQUITY, AND FUNDAMENTAL HUMAN RIGHTS AND DIGNITY FOR ALL

In a world where the gap between rich and poor is so big, some people live in luxury while others are forgotten. Some people eat at expensive restaurants every day, while others struggle to find enough food. Some live in big, fancy buildings, while others can't afford a home and live on boats. In London's King's Cross and Somers Town, there are people who feel left behind. They are someone's mother, father, teacher, or child. Some live on canal boats, moving from place to place, while others protest, saying there isn't enough housing. These people deserve to be seen and cared for.

As someone who has been lucky to grow up in a loving family, I know not everyone is as fortunate as me. That's why I want to speak up for these forgotten people. My project is called The Care Cart: A Space for the Forgotten to Belong. It's about turning an old building in King's Cross into a community space with a vertical farm, a place to learn, and a small market. This space will help low-income families, retirees, and people living on boats by giving them fresh, affordable food, a place to learn new skills, and a chance to connect with others.

This project is more than just a design—it's about creating a place where everyone feels like they belong. It's about caring for people who are often ignored and making their lives a little better.

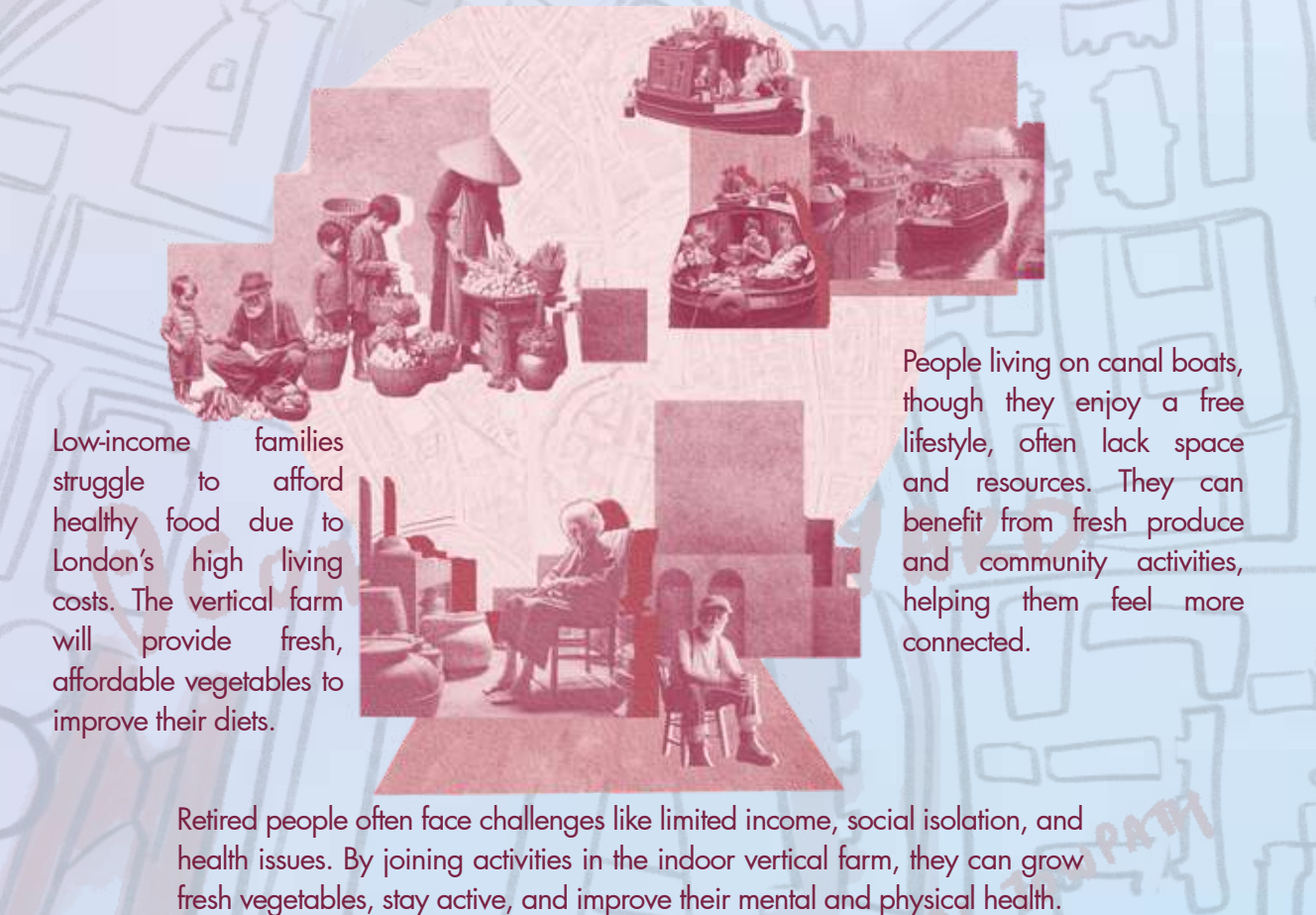


My design project aims to help three main groups in the Coal Drop Yard community near King's Cross Station in London: retired people, low-income families, and those living on canal boats along Regent's Canal.

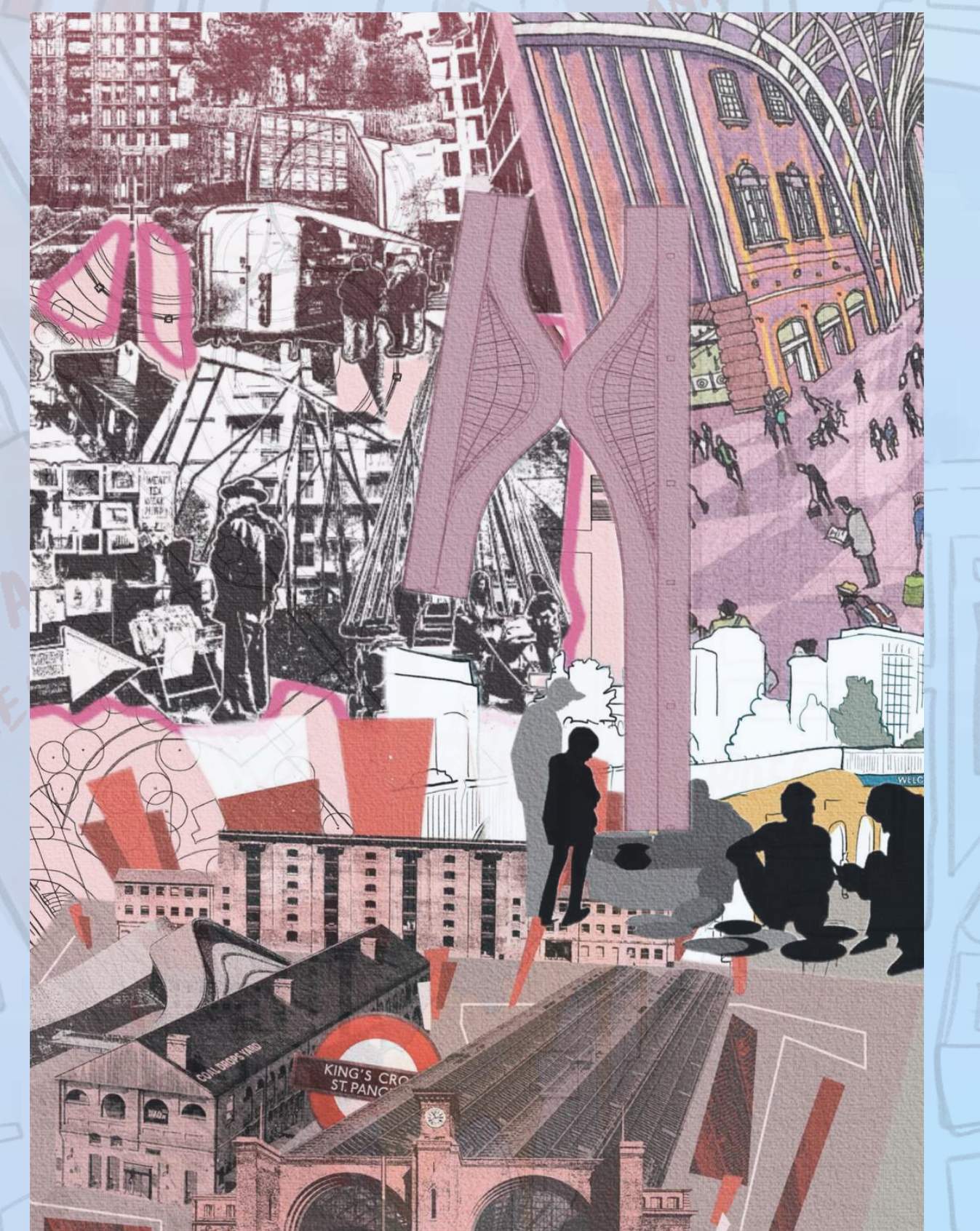
Project Main Site ; Coal Drops Yard



PROJECT NARRATIVE



POLITICAL POSTER





Housing Struggles of Somers Town Residents
Somers Town is one of London's poorest areas. Many live in overcrowded, low-quality housing, and some are homeless. The development of Coal Drops Yard hasn't helped them.

The Houseboat Community on Regent Canal
A unique community lives on houseboats along Regent's Canal, escaping rising rents and cramped spaces in King's Cross.

Immigrants and Refugees
King's Cross is home to many immigrants and refugees, who often struggle with finding jobs and fitting in. Many live in poverty without enough support.

Elderly Resident
Longtime older residents in King Cross feel left out due to fast development. They struggle with loneliness, health problems, and higher costs of living.

2 ZERO WASTE

3 GOOD HEALTH AND WELL-BEING

8 DECENT WORK AND ECONOMIC GROWTH

10 REDUCED INEQUALITIES

11 SUSTAINABLE CITIES AND COMMUNITIES

12 RESPONSIBLE CONSUMPTION AND PRODUCTION

This vertical farm provides local, affordable vegetables while cutting reliance on distant food sources, using space-saving methods like vertical farming and mushroom cultivation to conserve water and energy.

Promote Healthy Eating: Provides fresh, nutritious food to help people eat better and stay healthy. Teach Gardening and Nutrition: Offers lessons on gardening, healthy eating, and growing food at home.

Provide Training: Teaches farming, retail, and hospitality skills to help people find jobs.

Sells fresh produce cheaply for low-income families and provides jobs and skill-building.

The project transforms the historic Coal Drops Yard into a modern, green space, creating a lively hub for the community.

Vertical farming uses fewer resources like water and space, making food production more eco-friendly.

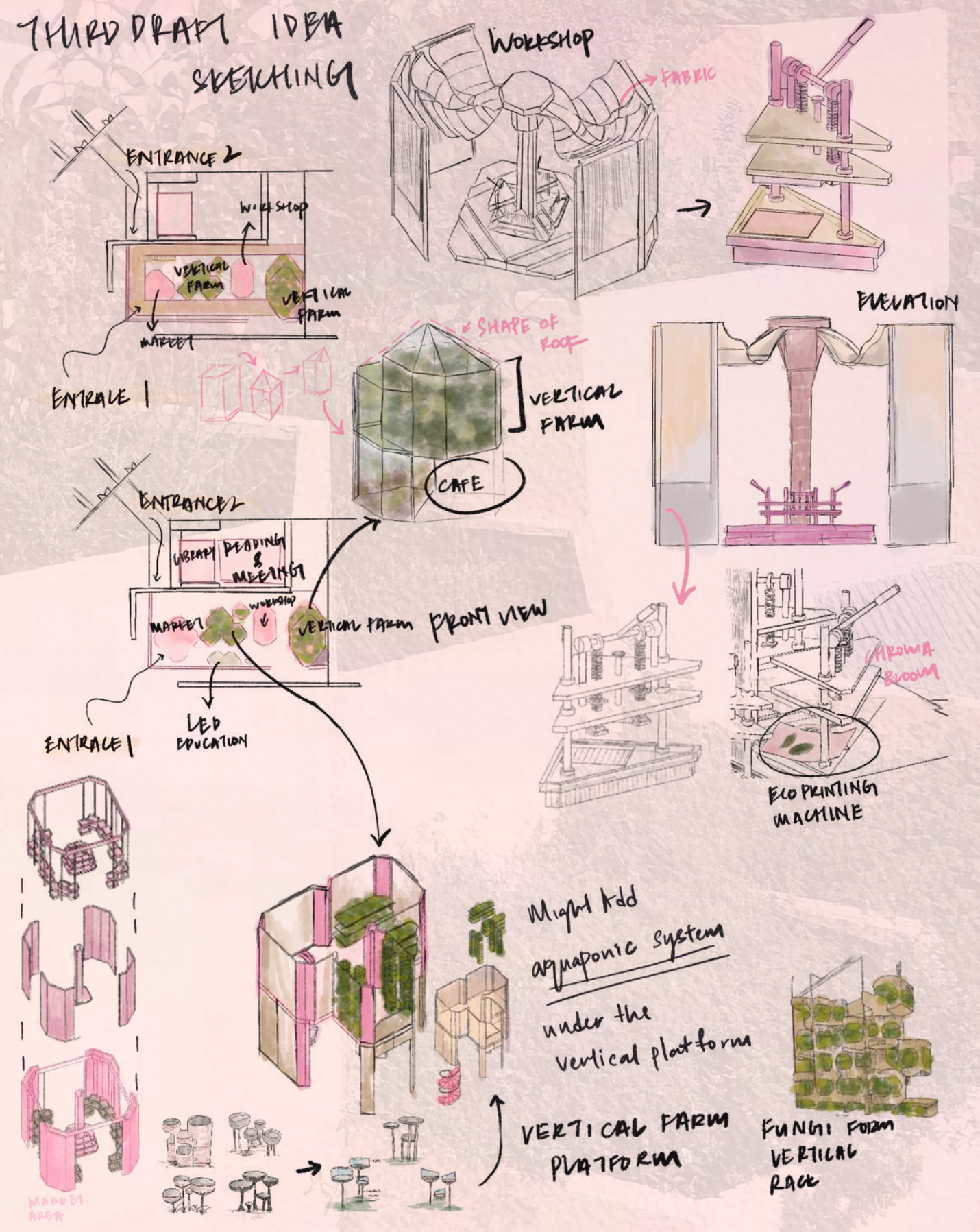
13 CLIMATE ACTION

14 LIFE BELOW WATER

Glass roof cuts energy use with natural light. Local food cuts transport emissions.

The project brings people together by involving them in gardening, harvesting, and running the mini-market. It helps build a strong, connected community.

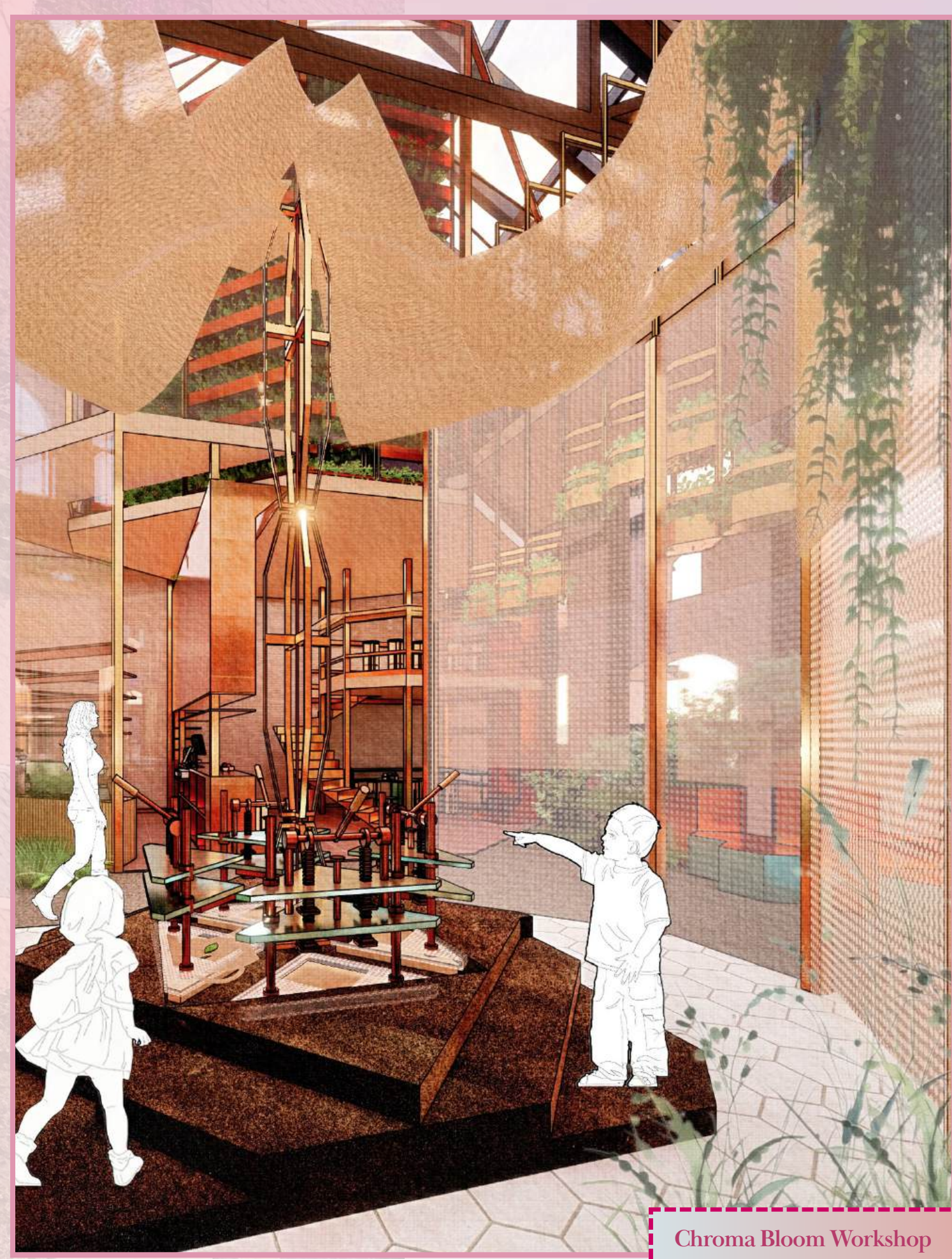
MATERIAL BOARD



Facade Visualisation

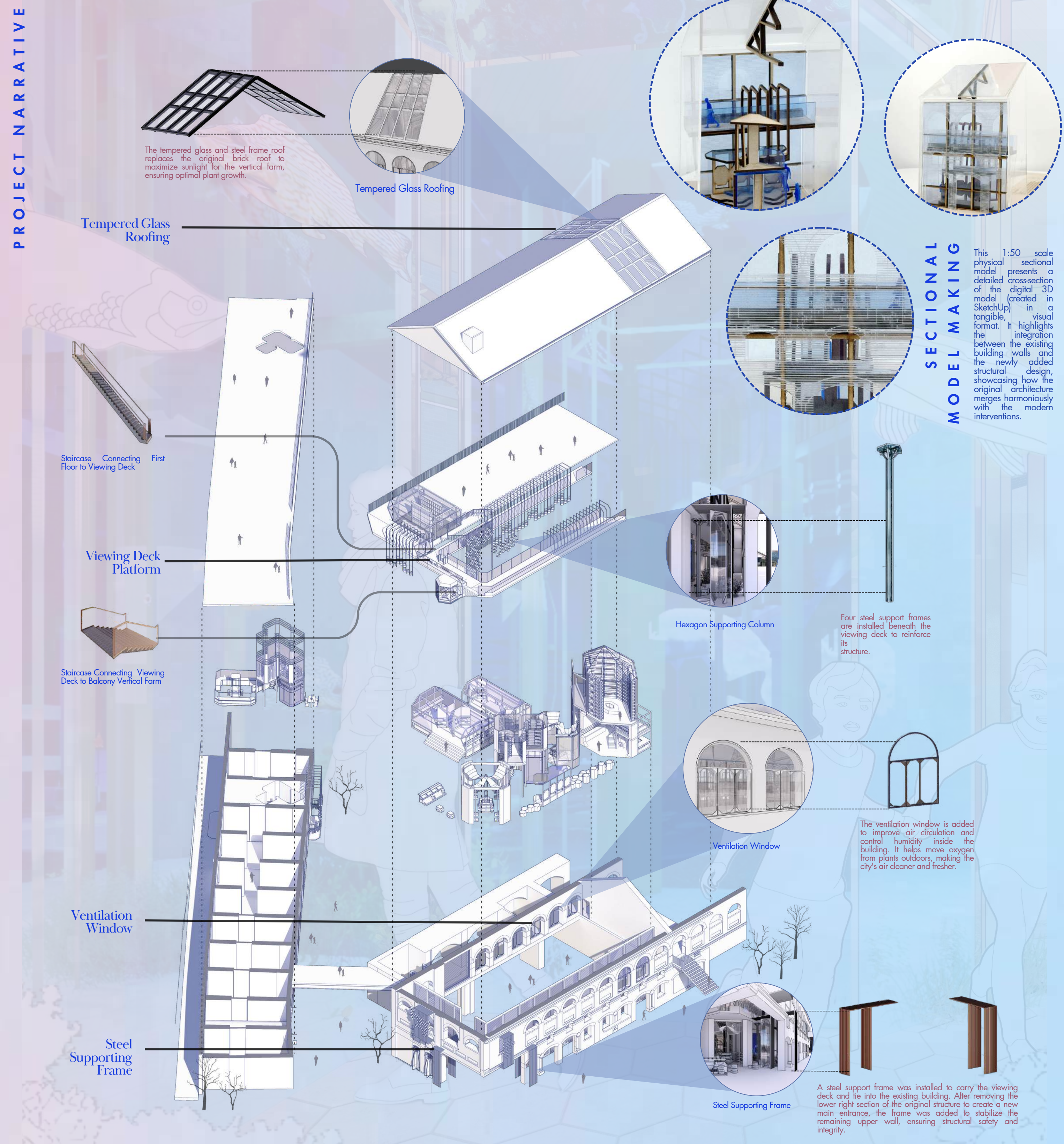


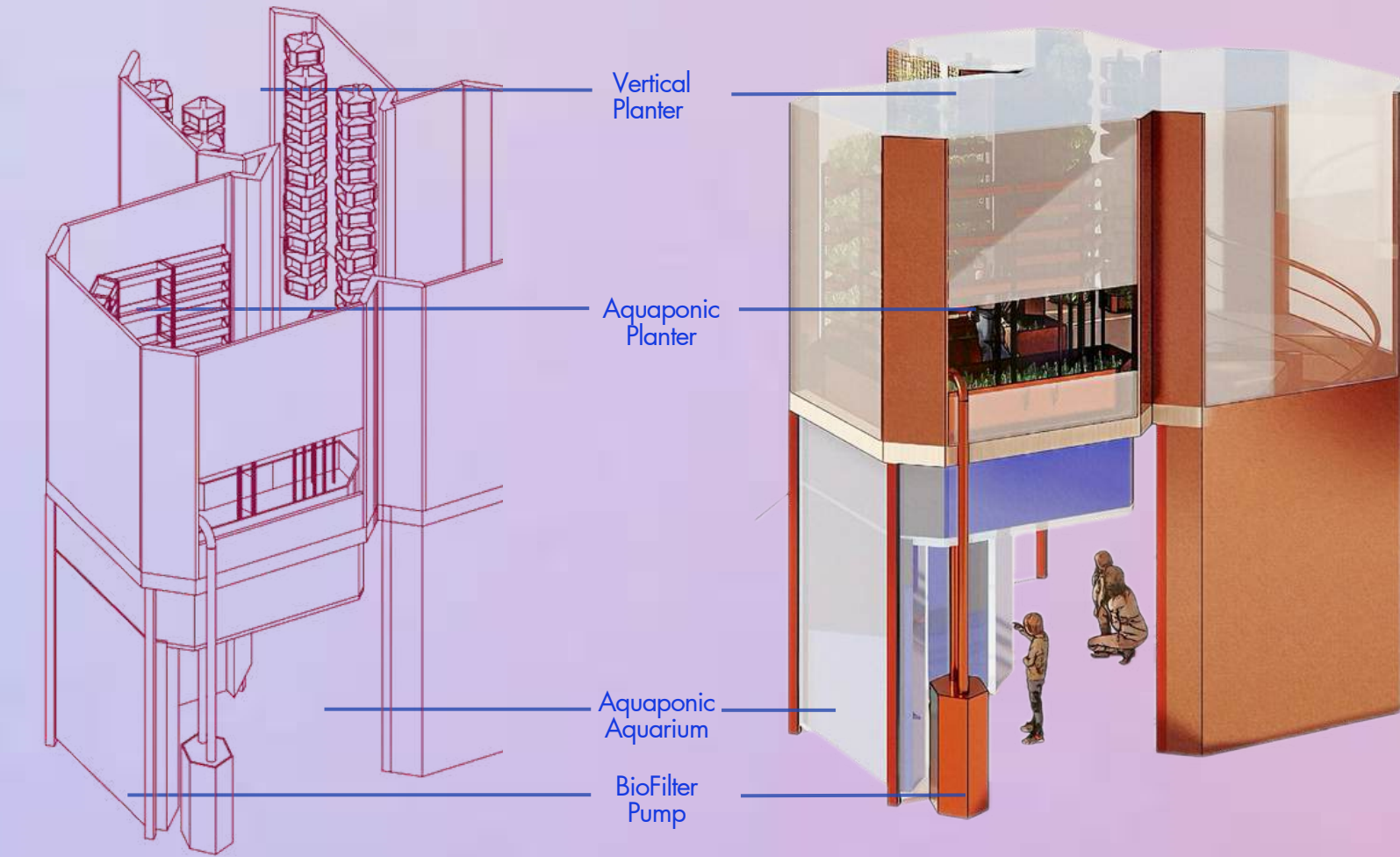
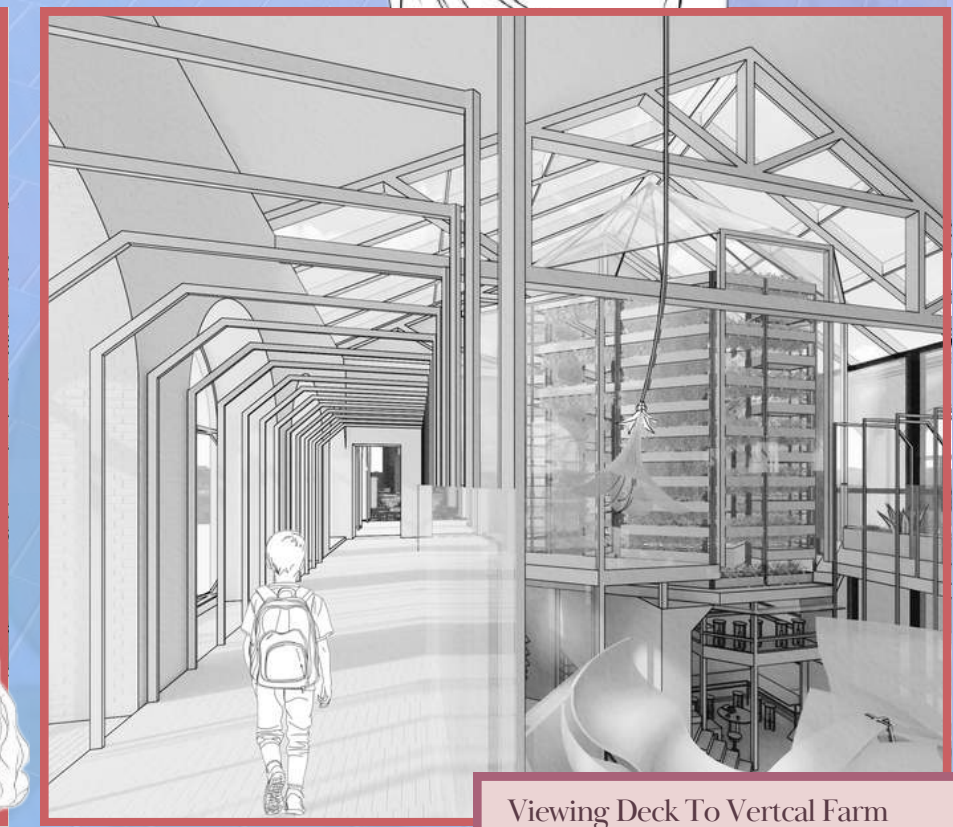
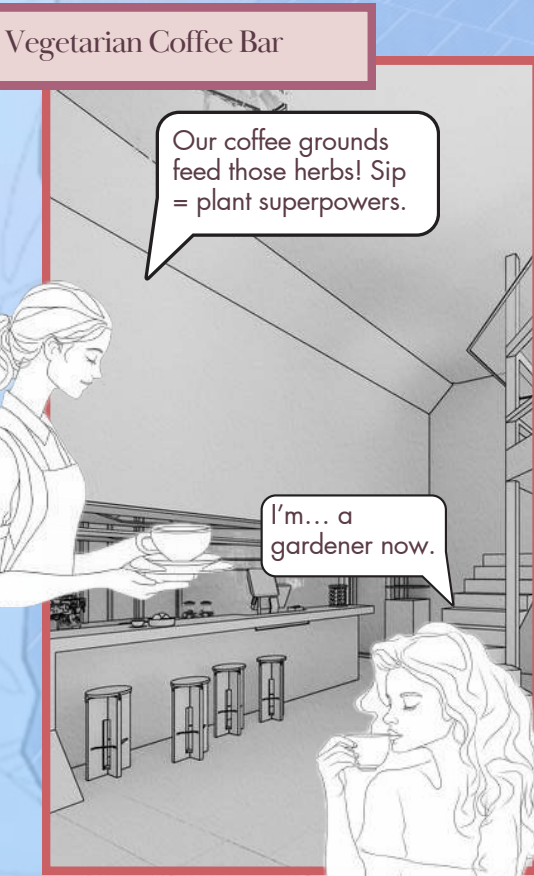
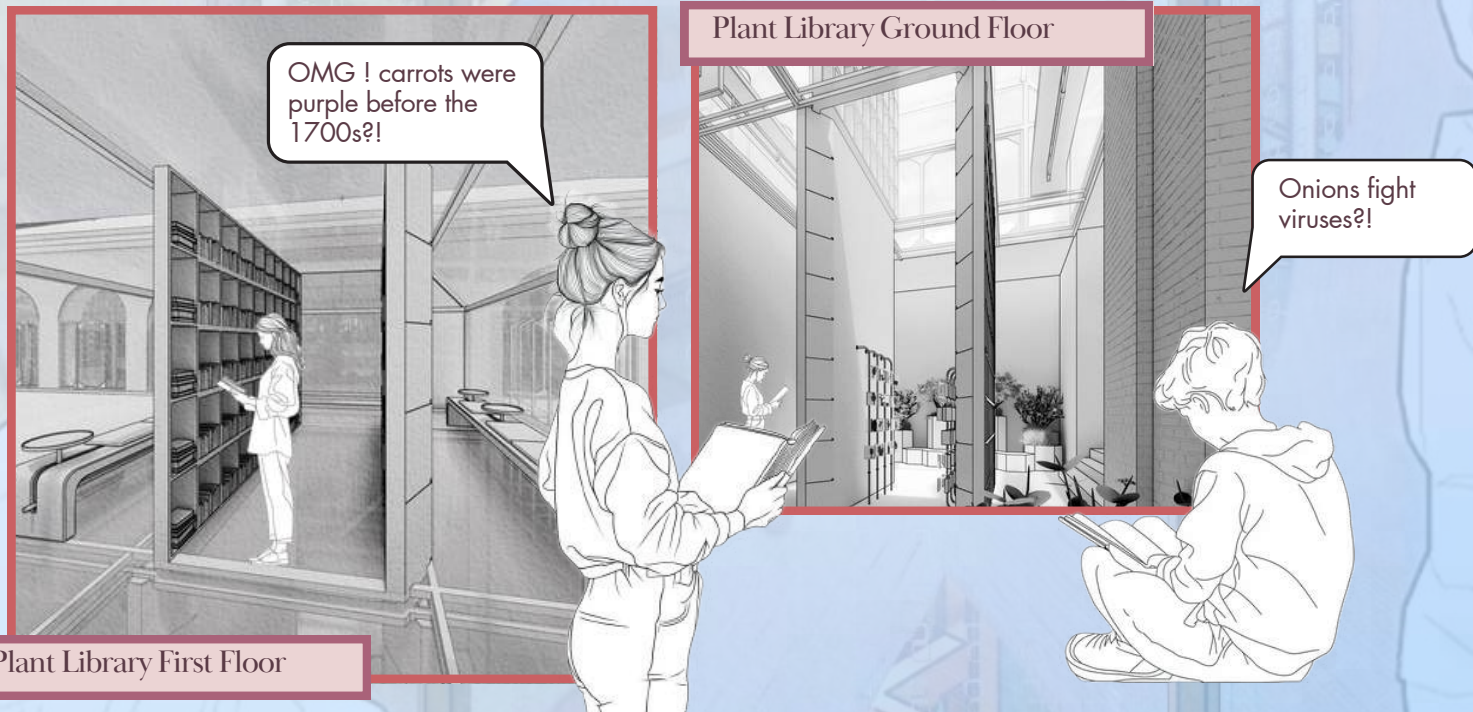
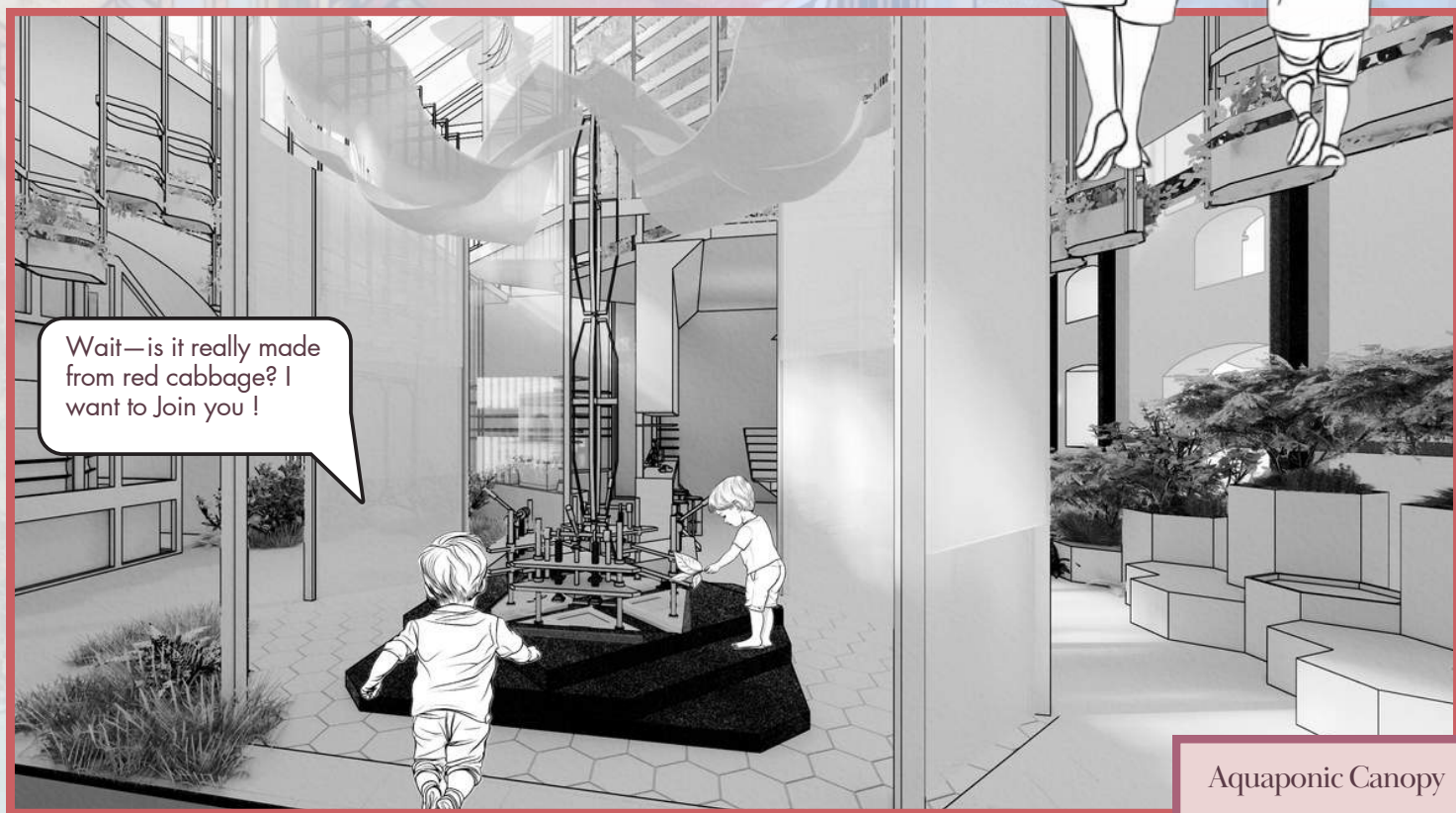
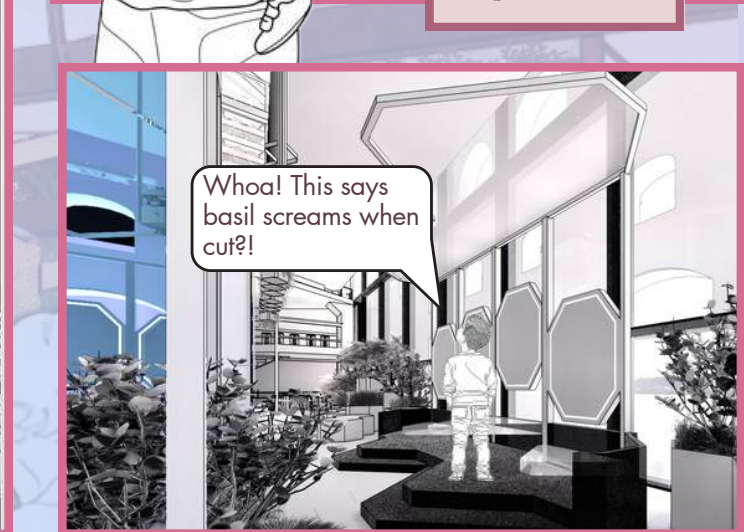
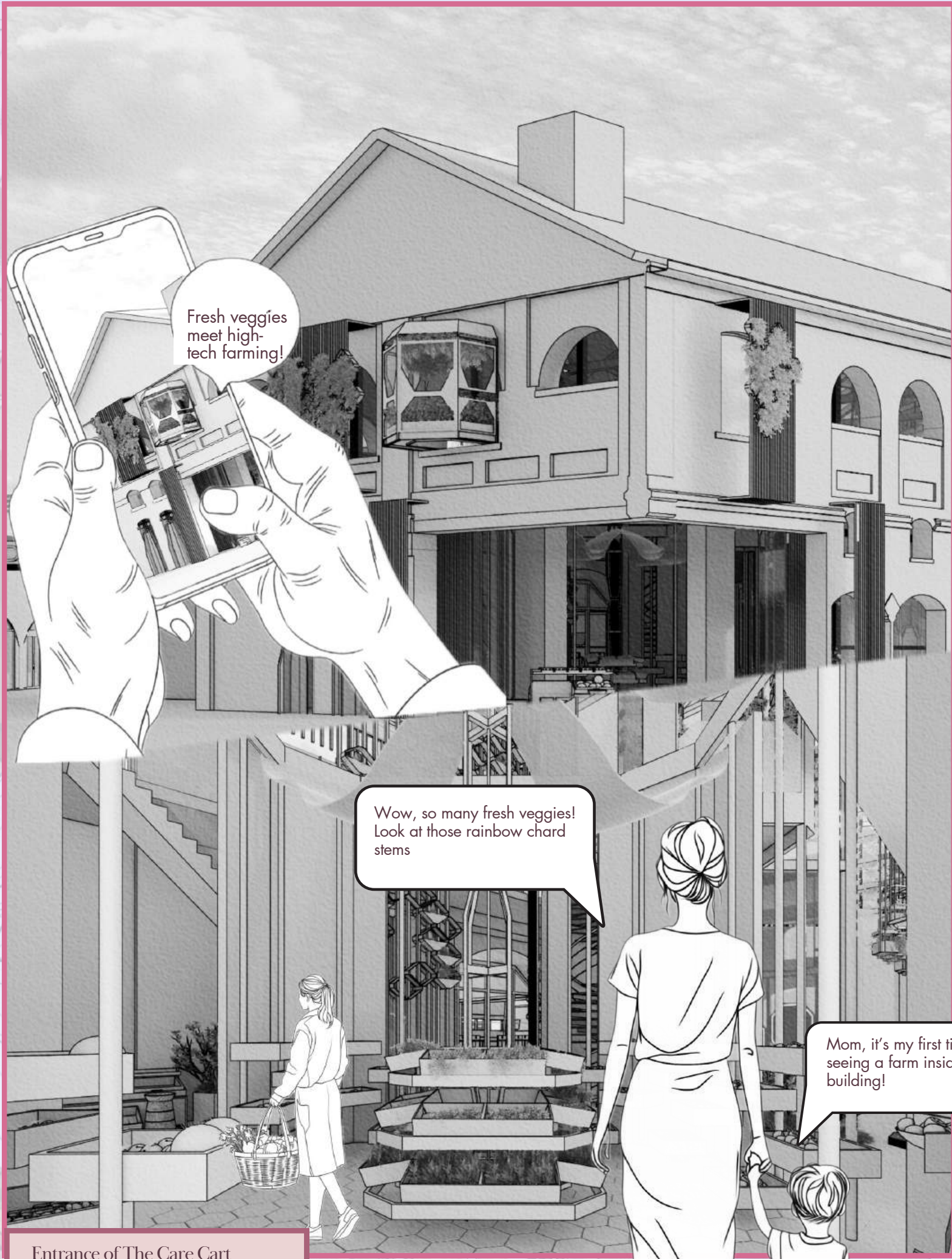
Aquaponic Canopy



Chroma Bloom Workshop

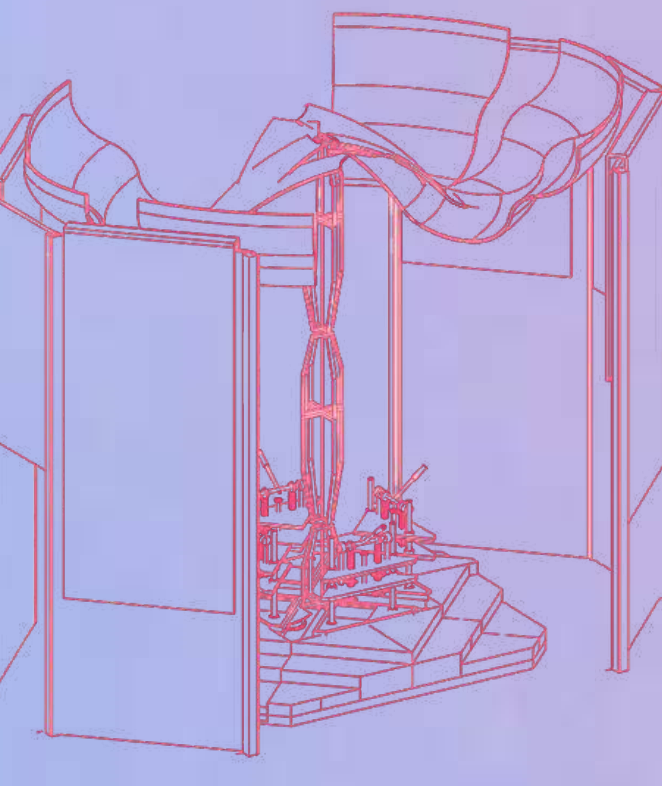
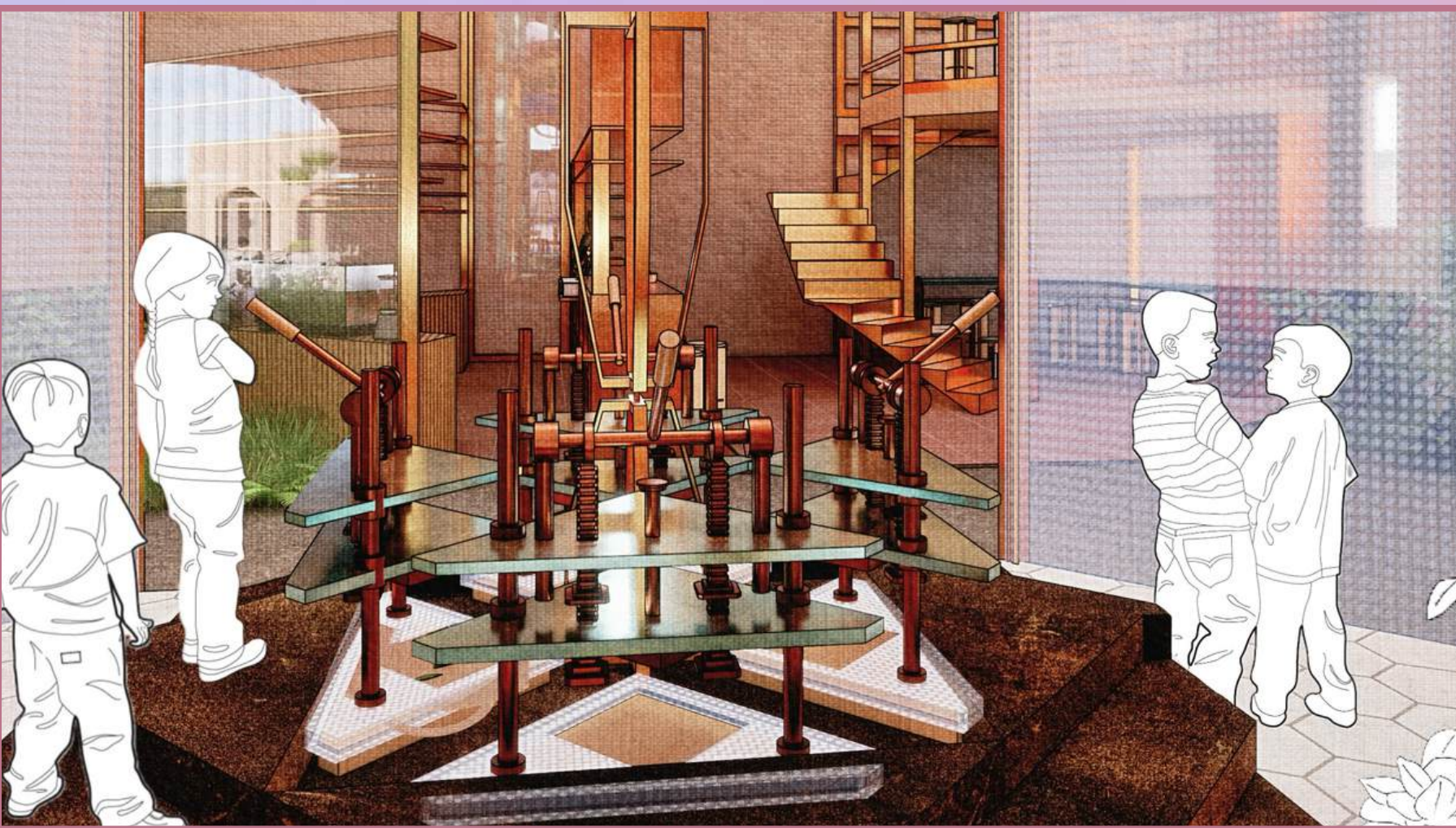
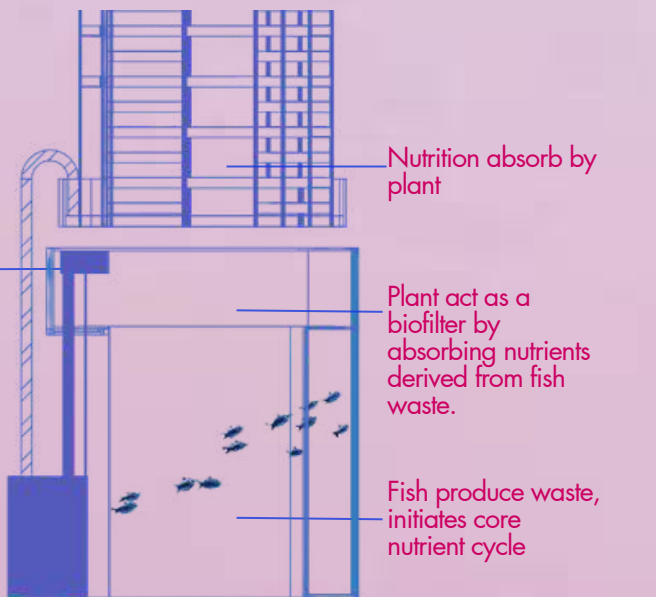
The Chroma Bloom botanical printing workshop brings neighbors together through nature and creativity. By teaching residents to transfer leaves' colors onto fabric using simple presses, it creates shared artistic experiences that bridge generations and cultures. This hands-on activity promotes sustainability by repurposing fallen leaves into art instead of waste, raising eco-awareness in an engaging way.





Aquaponic Canopy is a sustainable farming method that combines aquaculture (raising fish) and hydroponics (growing plants without soil), where fish waste provides nutrients for the plants, and the plants help filter and clean the water for the fish.

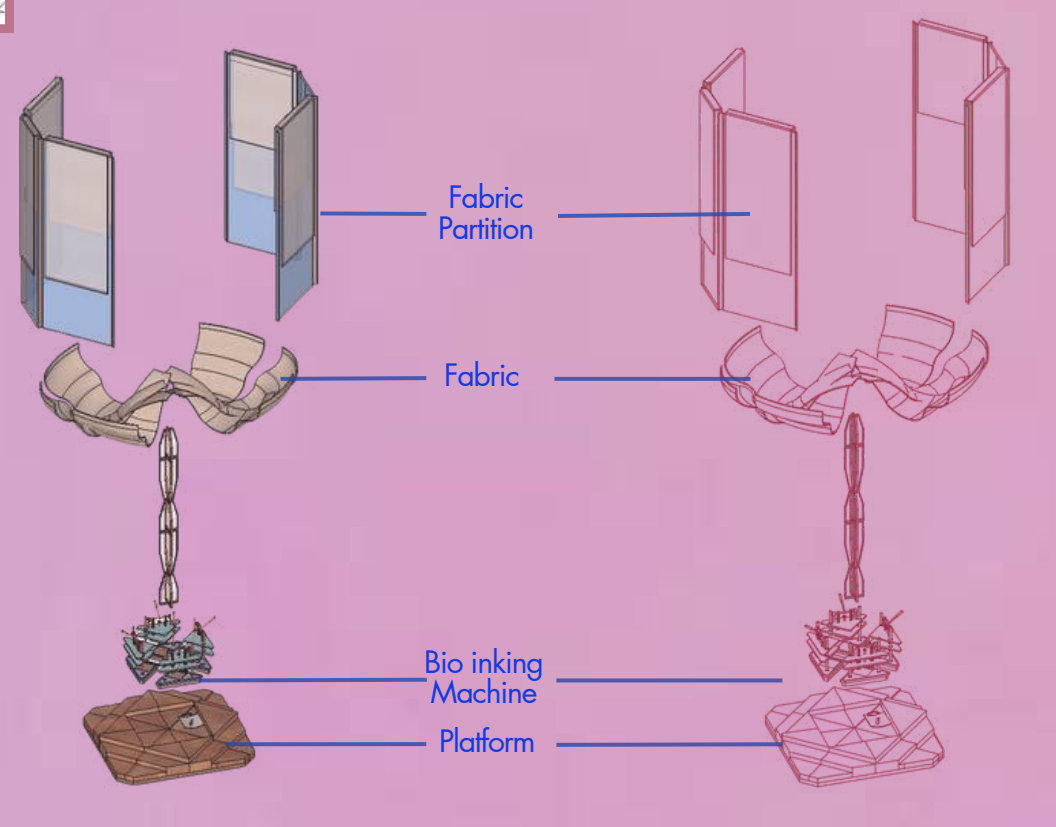
In an aquaponic system, ammonia from fish waste is converted into nitriton by specific bacteria. This process occurs in the biofilter, not directly in the water pump.



The Chroma Bloom Device is a botanical printing tool that uses a manual plant press machine to transfer the natural colors and shapes of leaves onto fabric.

- Use fresh leaves for brighter colors.
- Experiment with different fabrics and leaves for unique designs.

Chroma Bloom Bio-Inking brings nature's beauty to life through plant-dyed prints. Whether adorning a tote bag or any fabric, these eco-friendly creations are perfect for kids to take home and treasure. By preserving the vibrant hues of nature, we inspire children to connect with the environment in a lasting, meaningful way



Market Area

Passersby spot the vibrant market stall. They approach, drawn by fresh vegetables on display. Just behind, they discover the vertical Farm, the source of these crisp greens. Seeing food grow where it's sold creates a quiet moment of connection. Freshness made visible.

1

Aquaponic Canopy

Parents and children gather around the aquarium, drawn by the gentle movement of fish below lush plants. They watch as fish waste rises to feed the greenery, while roots clean the water in return. A small hand points - "Look!" - as the cycle of life becomes clear. Nature's perfect teamwork, revealed.

2

Mini Vertical Garden

People enter the green balcony. Towering plants surround them as city views peek through. Nature and urban life blend seamlessly in this elevated oasis.

3

Chroma Bright

Children approach the vibrant display, drawn by colorful tutorials. They tap the screen, discovering urban farming tips and waste upcycling ideas. As they interact, their curiosity grows - connecting digital learning with real-world nature. A spark of understanding ignites.

4

Chroma Bloom

Children gather around the printing station, drawn by the vibrant plant-dyed fabrics. Their fingers trace the leaf patterns on tote bags as they watch colors transfer - nature's palette captured on cloth. Nearby, new friends bond over creations while waiting, each print a lasting reminder of nature's beauty.

5

Vertical Garden

Visitors approach and gaze up - stacks of vibrant greens rise before them, bathed in a gentle glow. Fingers brush lettuce leaves growing overhead as people marvel at this indoor harvest reaching skyward. A farm grows where no field could.

7

Library

They browse the shelves, pick a book, and start reading - discovering nature's wonders while surrounded by seeds and tools. A quiet space where young minds grow alongside plants.

6

Vegetarian Cafe

Visitors sip coffee near sunlit windows. Behind the counter, staff collect used grounds - tomorrow's fertilizer for the vertical farm. The aroma of coffee blends with fresh herbs growing nearby, completing the circle from cup to crop.

8

Common Kitchen

The canal boat residents and neighbors cooking side-by-side in the spacious kitchen. Laughter mixes with the sizzle of shared meals as strangers become friends over chopped vegetables. The aroma of cooking binds the community together - one dish at a time.

1

2

Mini Aquaponic Canopy

Visitors approach the arch, drawn by the gentle movement of fish below hanging gardens. A child points as a volunteer harvests fresh greens overhead - fish feeding plants, plants cleaning water. Nearby, someone takes what they need while another tends the crops. Nature and community working in perfect harmony.



Interior Visualisation



Aquaponic Planter

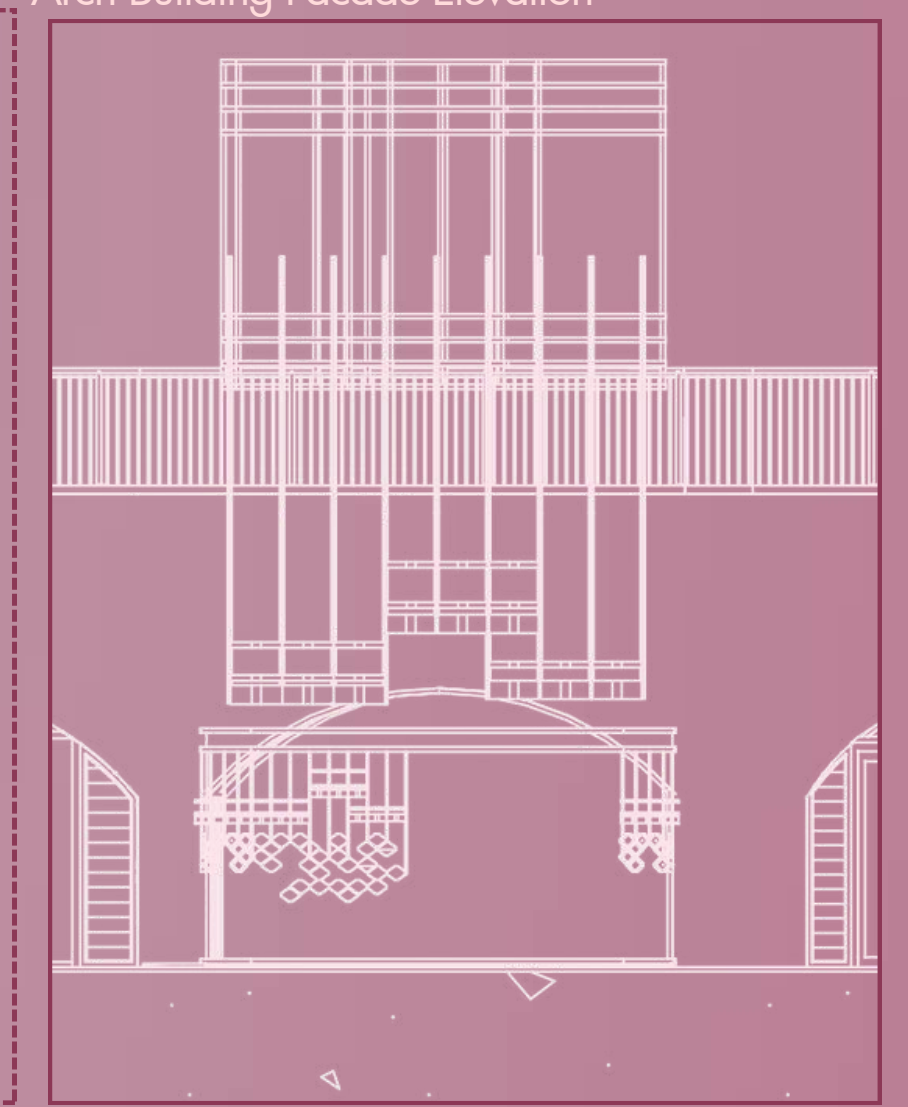


Common Bowl

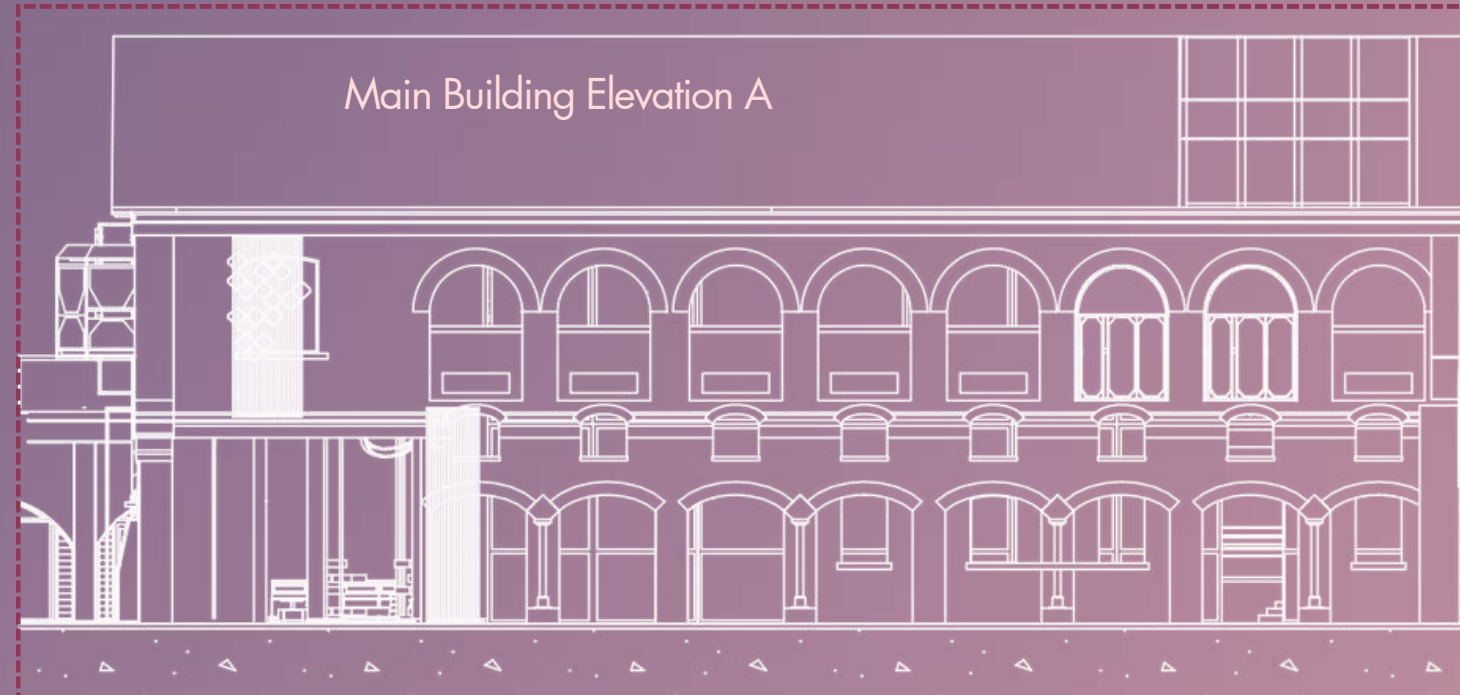
Main Building Facade Elevation



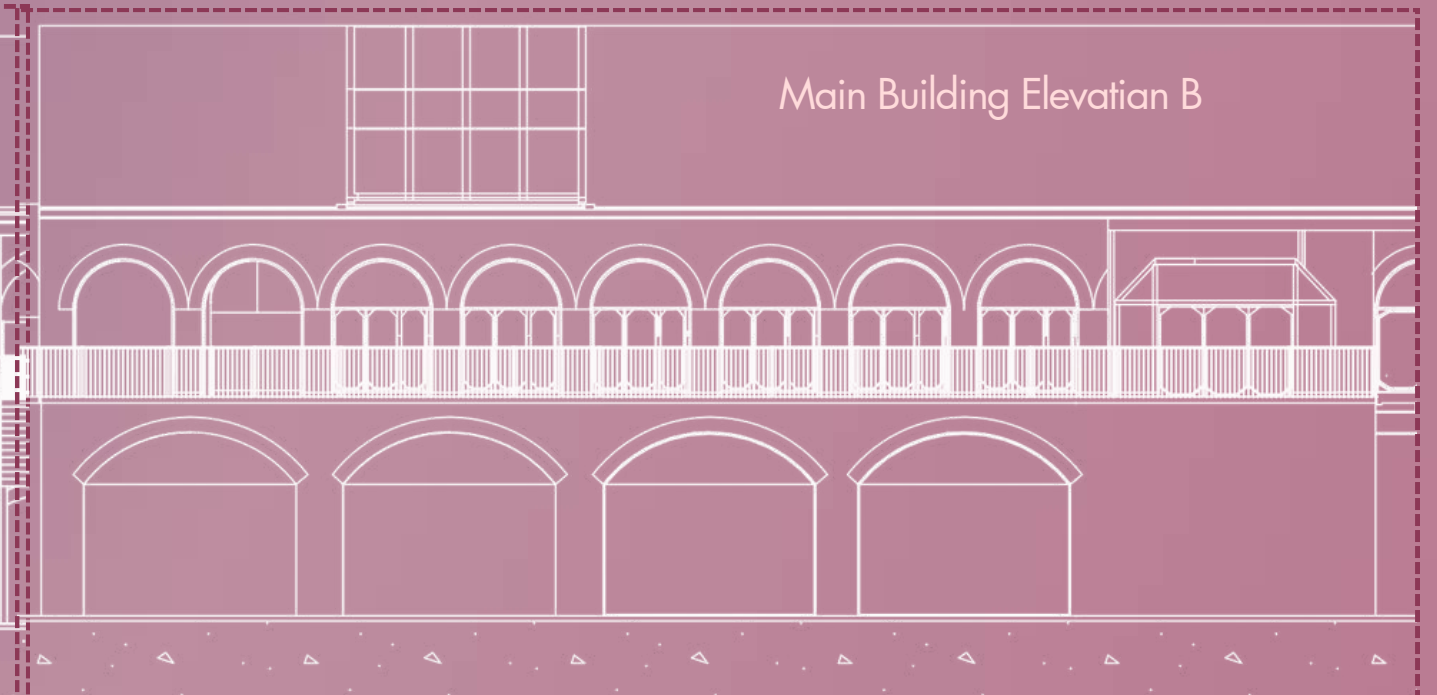
Arch Building Facade Elevation



Main Building Elevation A



Main Building Elevation B



Interior Visualisation



Plant Library



Common Kitchen



Aquaponic Canopy



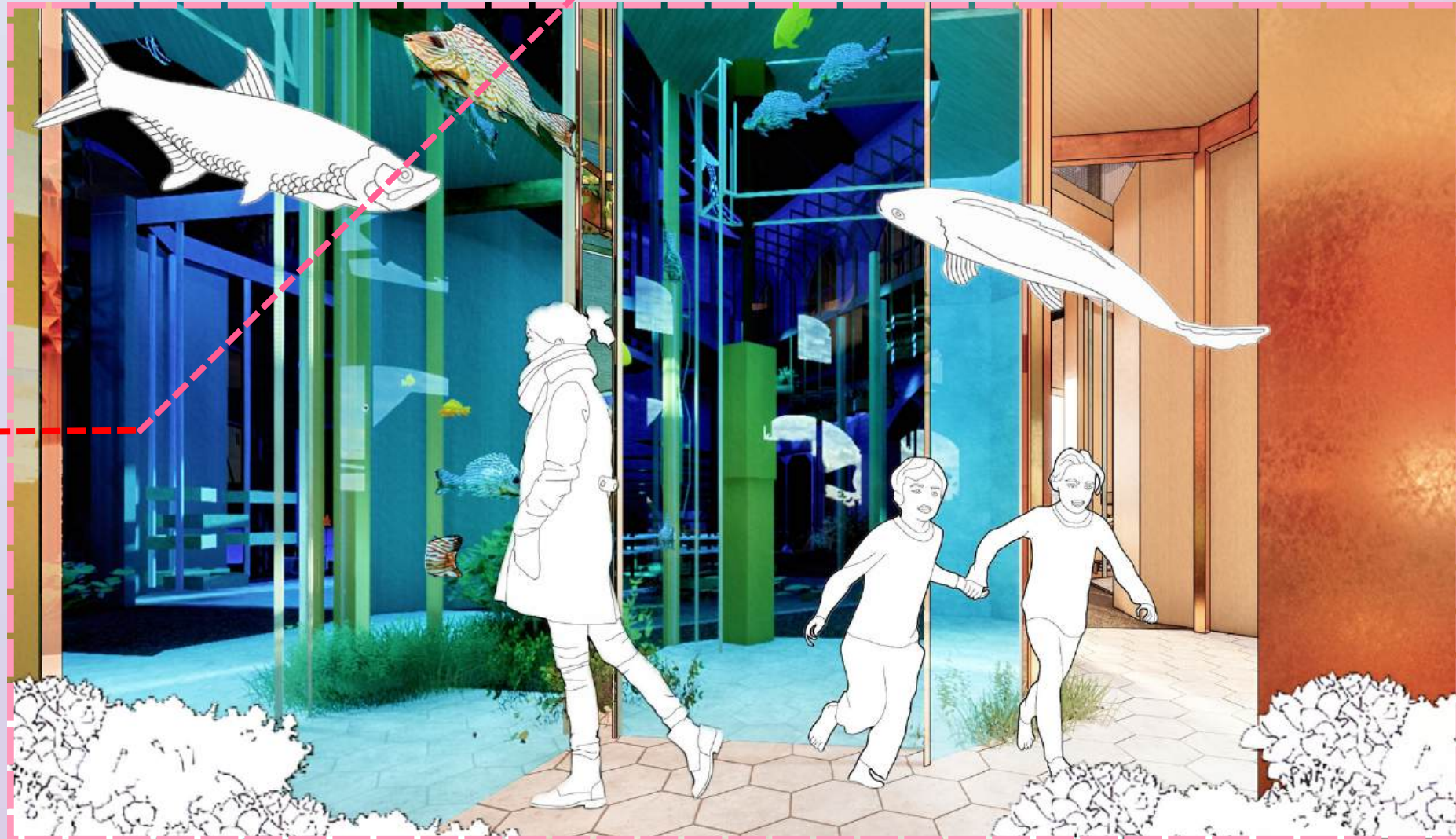
Mini Vertical Farm Balcony



Pathway To Vertical farm



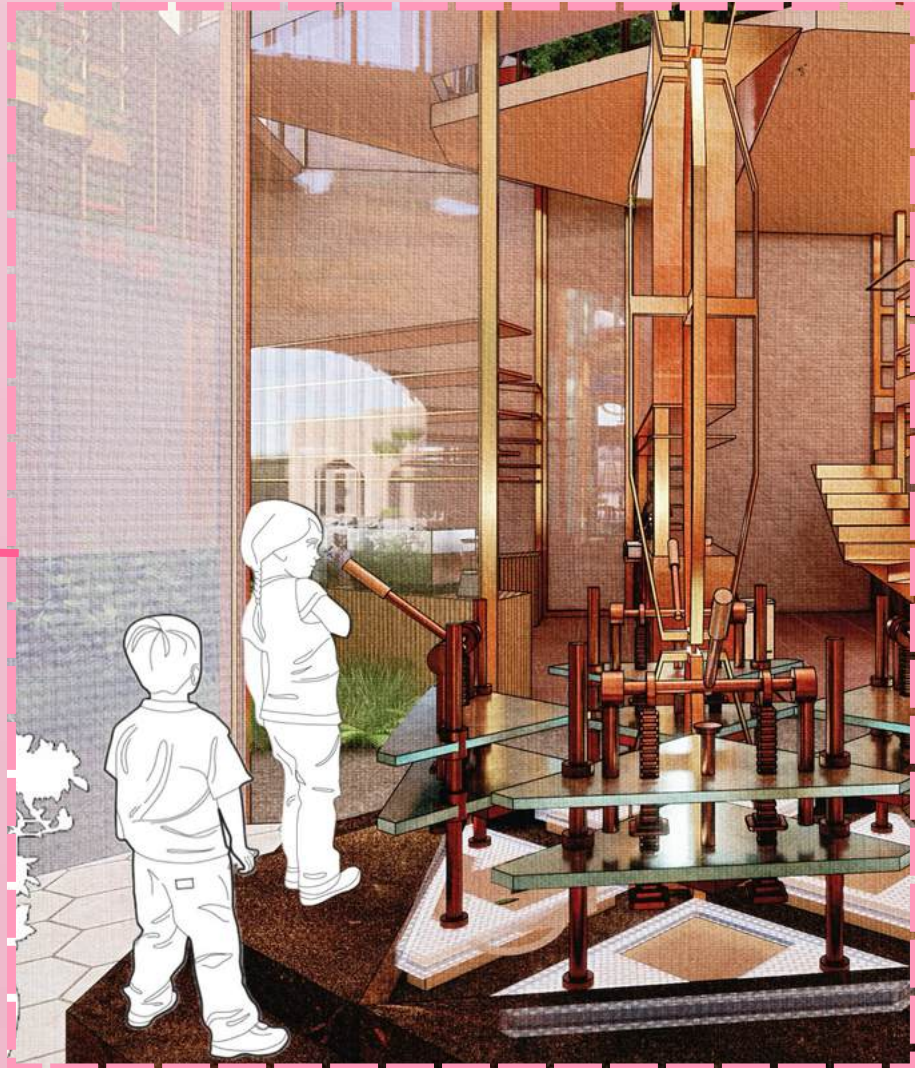
Market Area



Aquaponic Aquarium



Aquaponic Farm Planter



Chroma Bloom Workshop



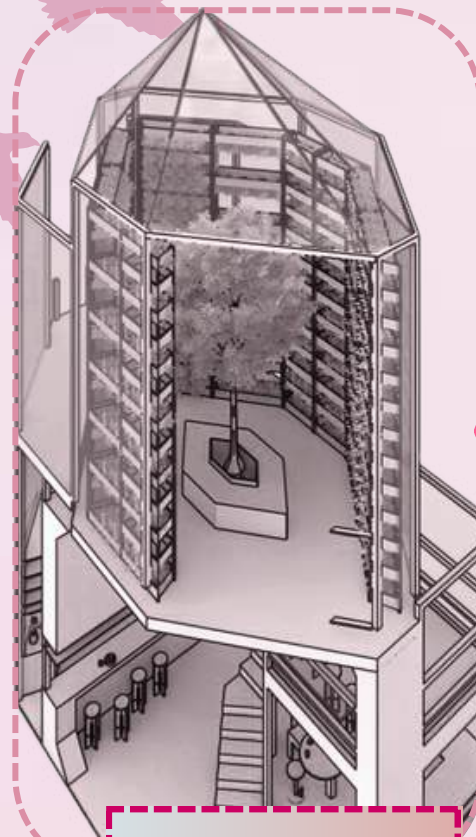
Hexagon Archway



Hexagon Planter



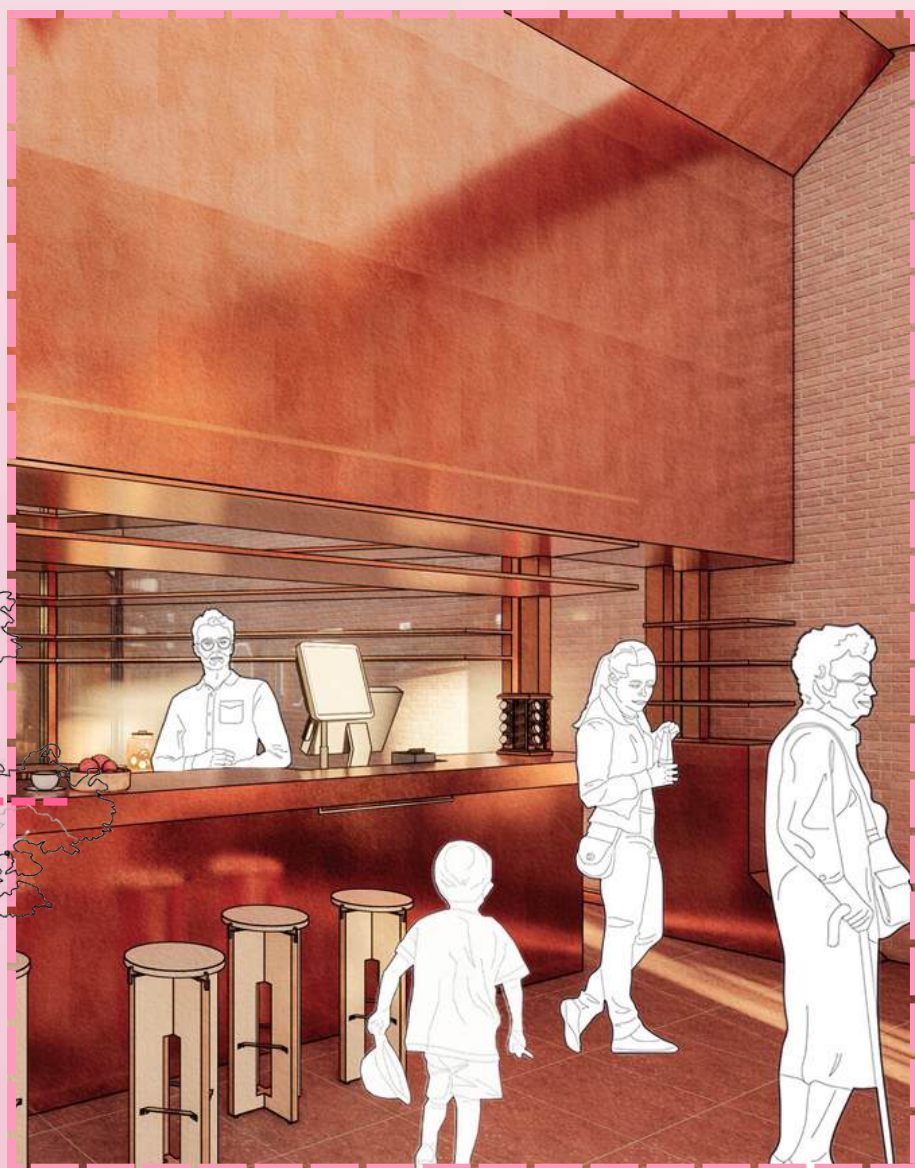
Solar powered Plant Growth Light



Vertical Garden



Vertical Farm



Vegetarian Cafe

Along the path leading to the vertical farm garden, a striking hexagon-shaped arch frames the entrance to the viewing deck. This architectural feature creates a dramatic transition, giving visitors the surreal sensation of stepping into another world where futuristic agriculture meets breathtaking design.

These solar-powered plant growth lights shine brilliantly day and night, ensuring your plants receive optimal light for healthy growth. At night, the flower-shaped LED fixtures glow beautifully, creating a breathtaking visual spectacle when viewed from outside the building—transforming any structure into a luminous work of art.

This hexagon-shaped planter is not just a visually appealing addition to your home or garden, but also a highly functional space-saving design. Perfect for growing edible ferns (such as fiddlehead ferns or other culinary varieties), it allows you to cultivate fresh, organic greens in a compact and efficient way.