

# DISSONANCE PRINT

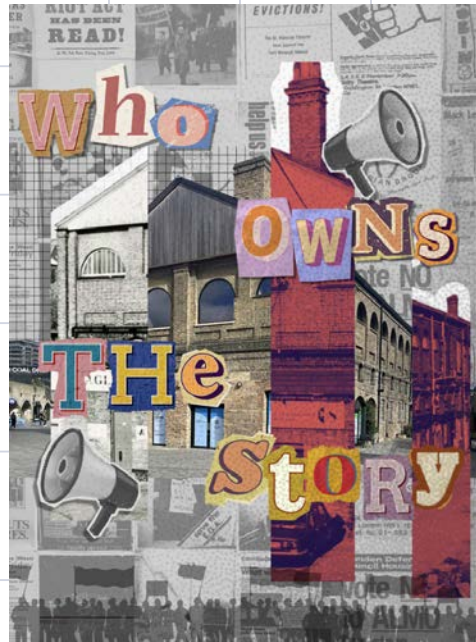


This project reclaims space through the power of community storytelling. Located in the commercialised heart of Coal Drops Yard, it introduces a self-publishing print hub designed to amplify the voices of Somers Town's displaced communities those who have lost their homes, families, and sense of belonging through waves of gentrification.

During site visits to Somers Town, I encountered murals in the Story Garden, it is raw, visual records of loss, resilience, and resistance. These stories of people pushed out by structural injustice inspired the heart of this project. It aims to pull these stories into visibility, offering a space in Coal Drops Yard where they can be published, preserved, and shared.

This is not just a creative space. It is a platform for social justice, a place where self-expression becomes activism, where printing is an act of resistance, and where the community takes control of its own narrative in a landscape dominated by exclusion and luxury.

By restoring free, uncensored access to professional printing, this space turns individual experiences into collective memory, ensuring the histories of displacement are not erased, but amplified loud, visible, and impossible to ignore.



## POLITICAL POSTER

This poster questions the transformation of Coal Drops Yard from an industrial and cultural space into a polished retail district. Through a collage of past and present, it highlights who has been erased or excluded by gentrification.

Protest imagery and ransom-style typography evoke resistance, urgency, and the demand to be heard. It reflects the same message as my project a self-publishing hub for activism and community voices. This is not just about print; it's about reclaiming space, amplifying unheard stories, and pushing back against commercial control.

The poster is a call to action: **Who owns the space and who should?**

## TARGET USER



STCA – Somers Town Community Association

STCA supports the Somers Town community, which has been heavily impacted by displacement and gentrification. This project will give STCA and local residents a space to reclaim their stories and express their experiences through print, writing, and public exhibitions. It will act as both a creative hub and a platform for community voices, helping STCA continue its mission of empowering and representing Somers Town in the face of ongoing change.



Migrant and Refugee Storytellers

People with lived experiences of displacement who need a safe space to document and publish their personal histories and emotions.



Independent Writers, Activists, and Young Designers

Many self-published authors, poets, and writers struggle to find accessible, affordable spaces to produce and share their work, especially in central London where professional printing services are limited or expensive.

## SITE MAP



## AI IMAGE



## MANIFESTO

This is a space built for those who have been pushed out, overlooked, and silenced. It is not polite, quiet, or neutral. It prints what needs to be said. It is raw. It is loud. It refuses to be invisible.

This space is for the stories that were never told, the histories erased by development, the anger and grief that never made it into official archives. It gives tools back to the people, tools like paper, ink, machines not to create decoration, but declaration. It is a press for those who have lost space, and now claim it back through words.

It doesn't ask for permission. It prints without censorship. It publishes pain, memory, resistance, protest. It invites people to speak, shout, cry, and carve their voices into the city again. This is not about nostalgia but it's about urgency. About reclaiming space that has been stripped of meaning and returning it to the hands of those who shaped it.

Here, the community is the author. The press is the amplifier. The space is the message.



1850s

Built to receive coal from northern England via train, the site functioned as a coal storage and distribution centre for London, powering the city's rapid industrial growth.



Walking to coals Drop Yard feels like a huge shift from somers town. In somers town it feels more like walking down your neighbourhood, like everyday life, but here, it just feels like luxury brands, polished high end shops.

The coal Drop yard is indeed very beautiful, yet empty. The luxury brand is pushing the community away.

THE SPACE IS EXCLUSIVE RATHER THAN INCLUSIVE!



1990s

The abandoned warehouses became a hotspot for underground raves and informal gatherings, giving the space a new life as a site for rebellious and alternative culture.



Late 20 Century

The larger King's Cross Central redevelopment began, aiming to transform the area into a vibrant commercial and cultural hub, with Coal Drops Yard included in the masterplan.



2018

Redeveloped by Heatherwick Studio, Coal Drops Yard reopened as a high-end shopping district. The design preserved historic structures but introduced luxury branding and curated retail, changing the public experience and accessibility of the site.

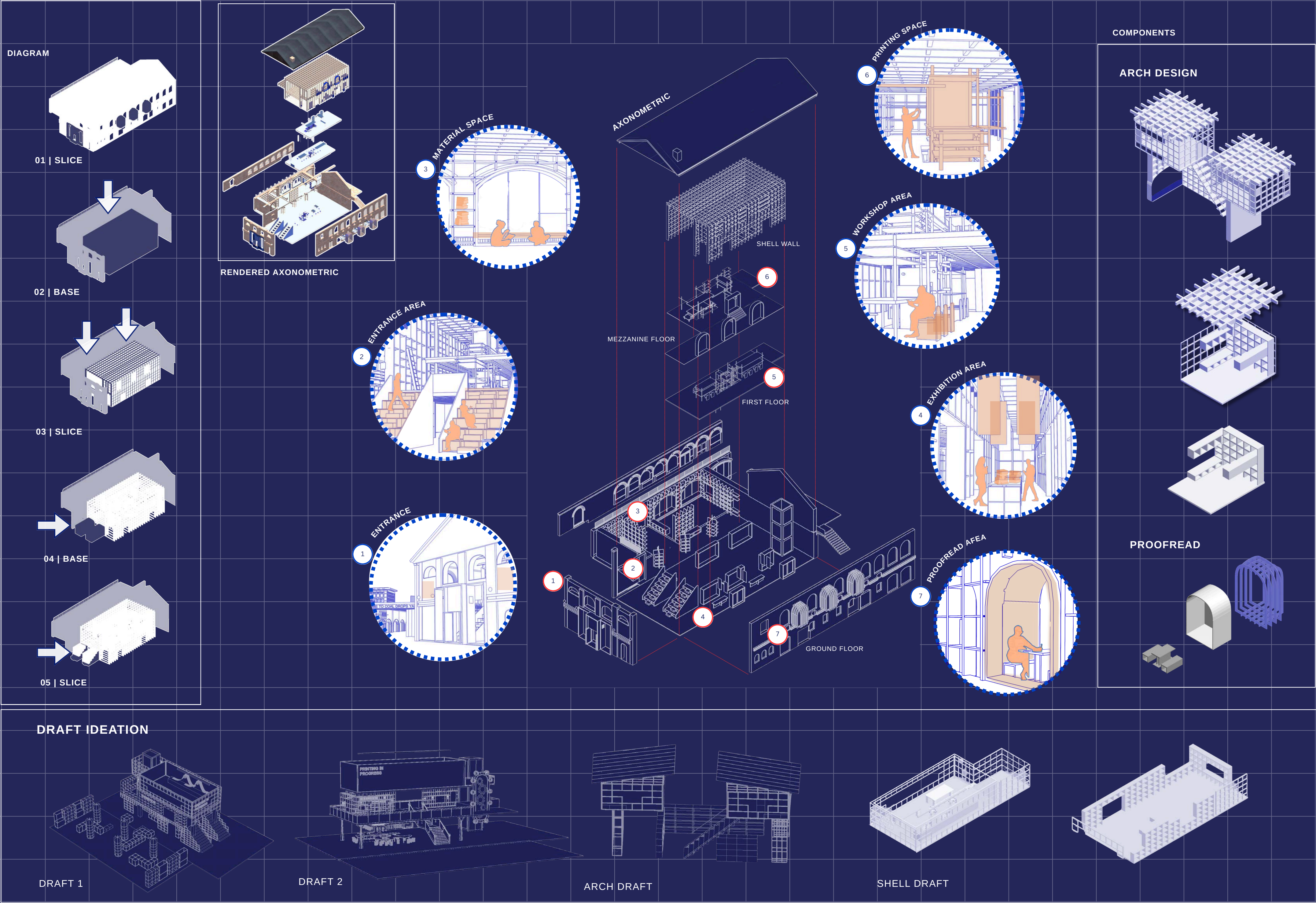


PHYSICAL MODEL

## SDG

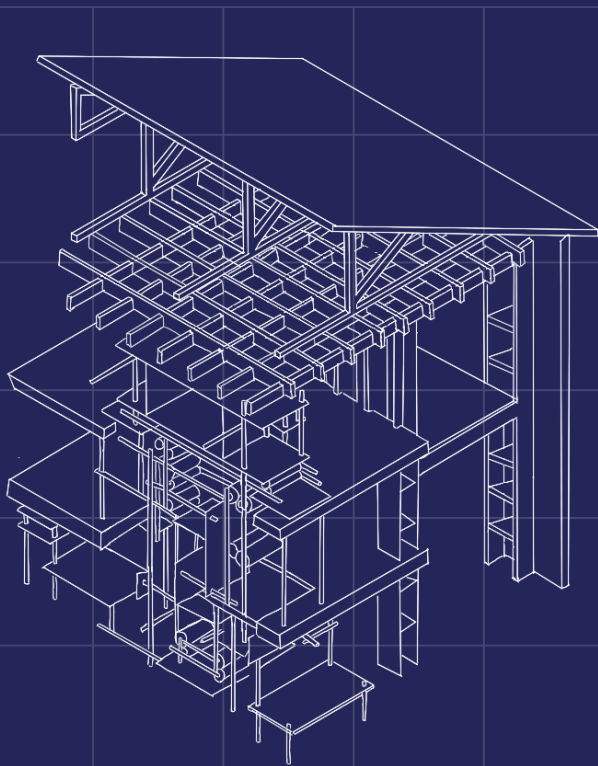








# MILL OF STORIES



AXONOMETRIC  
VIEW

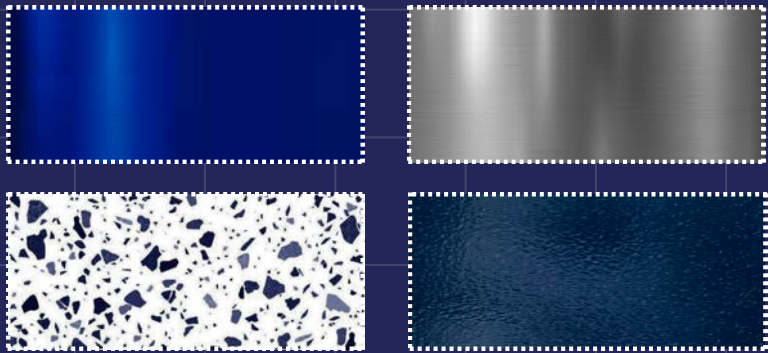
The Mill of Stories is more than just a printing device, it's the heart of the space. Designed to expose every mechanical part, it echoes the rawness of the stories it brings to life. Inspired by factory machines and printing history, it stands tall like a skeletal structure, it is open, honest, unapologetic. Nothing is hidden. The process is visible. The labour is respected.

Every roll, cog, and belt moves with purpose. This machine doesn't just print it processes emotion, memory, and resistance. It acts like a mill, grinding down silence and turning it into stories. A machine that connects to tables and platforms across floors, linking people, paper, and politics.

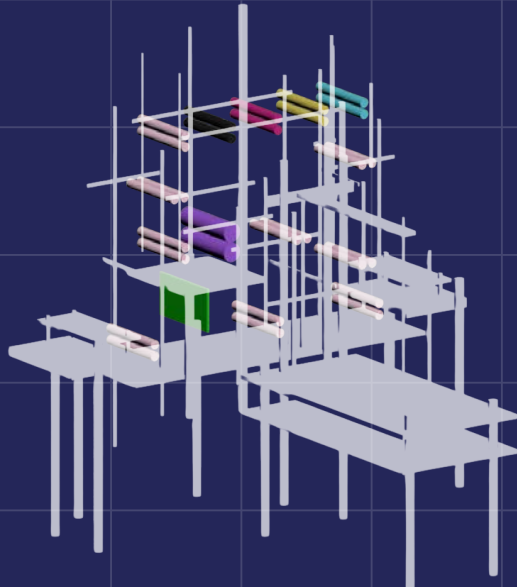
The Mill of Stories is not sleek or decorative. It's industrial, loud, and heavy because the stories it tells carry weight. It's here to amplify voices that have been lost or pushed aside, and it turns the act of printing into a public, collective gesture of taking space back.

This isn't just a tool. It's a declaration.

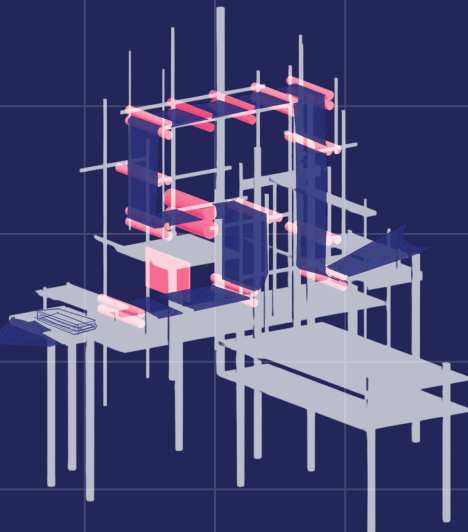
## MATERIALS



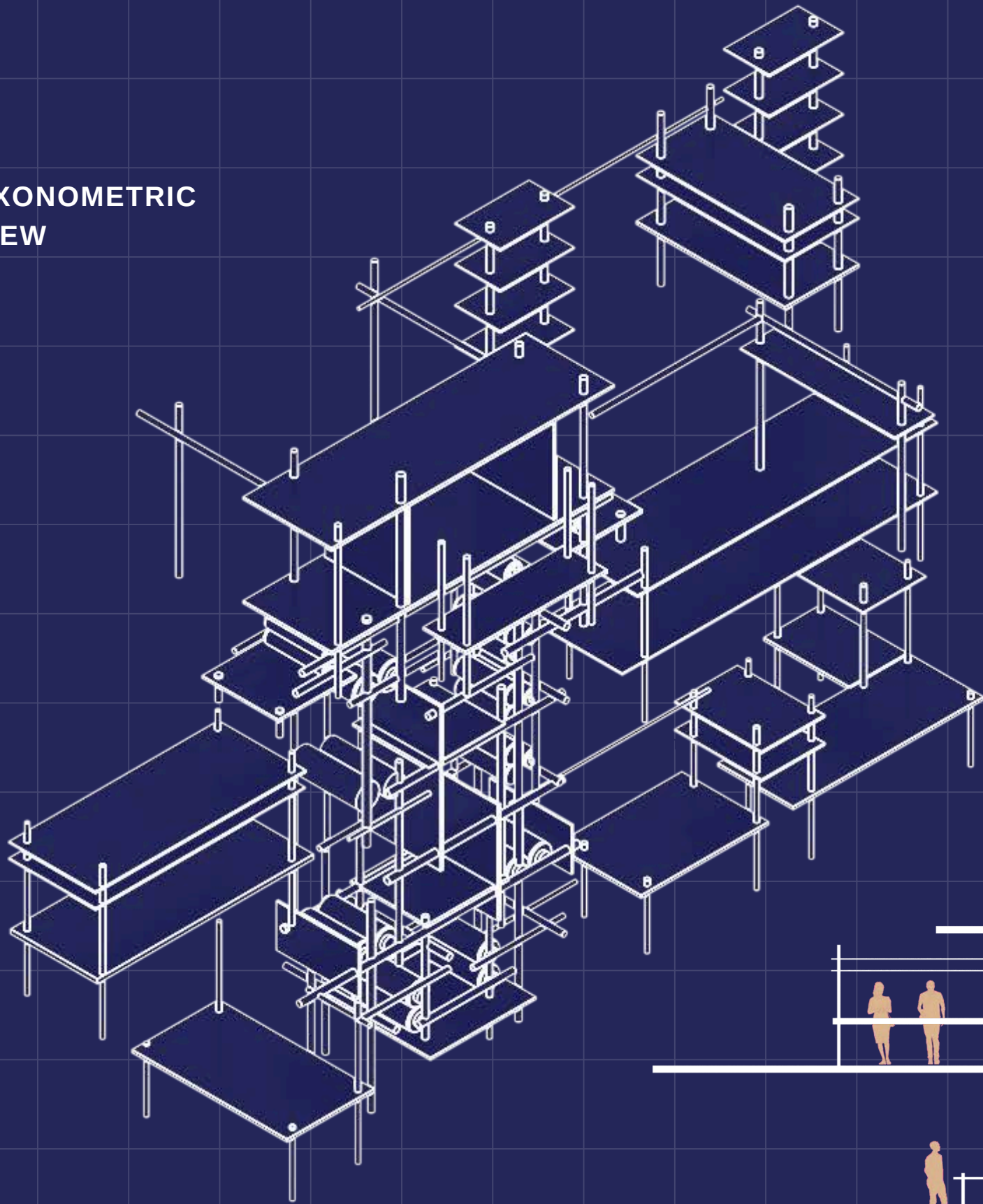
## IDEATION DRAFT



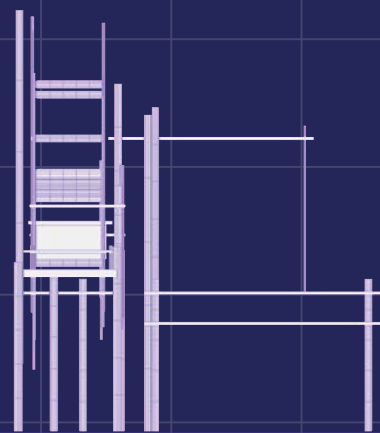
ROLLERS FUNCTIONS



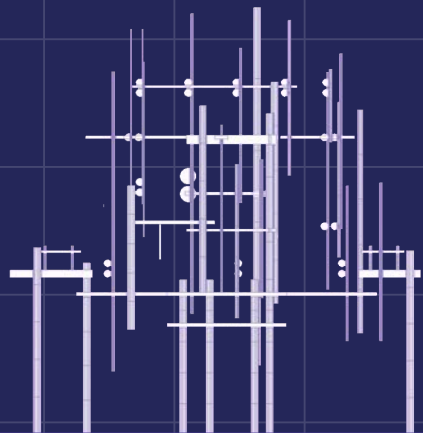
HOW THE PRINT WORKS



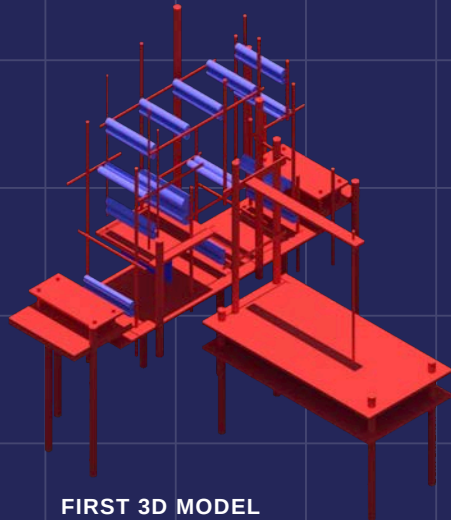
## DETAILED DEVICE



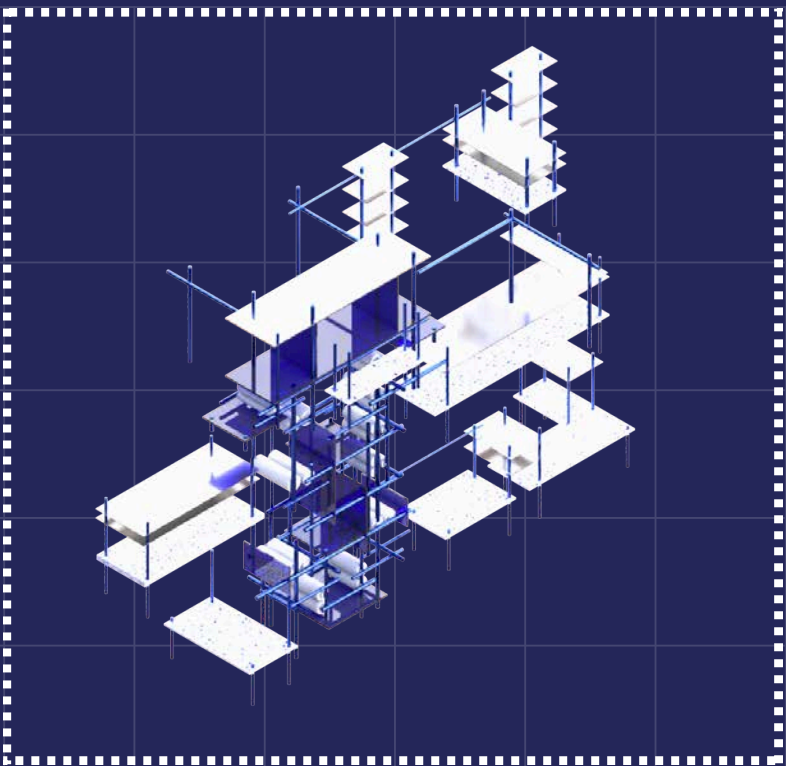
SIDE VIEW



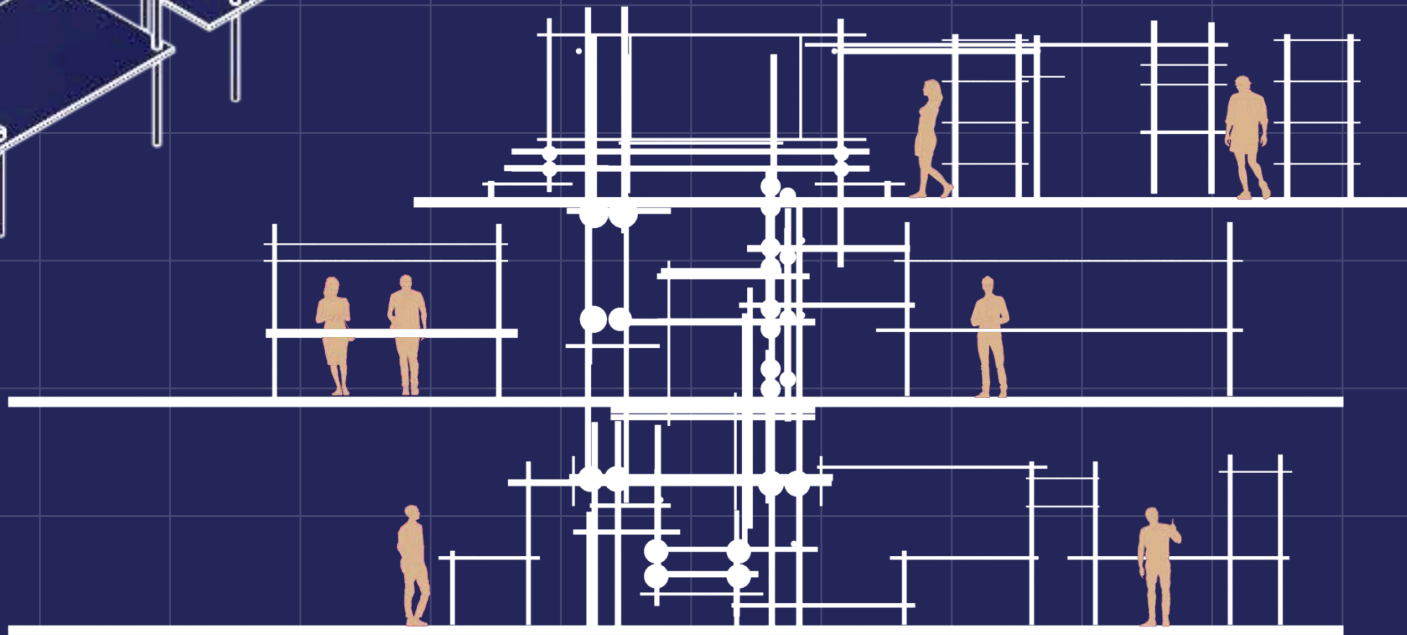
BACK VIEW



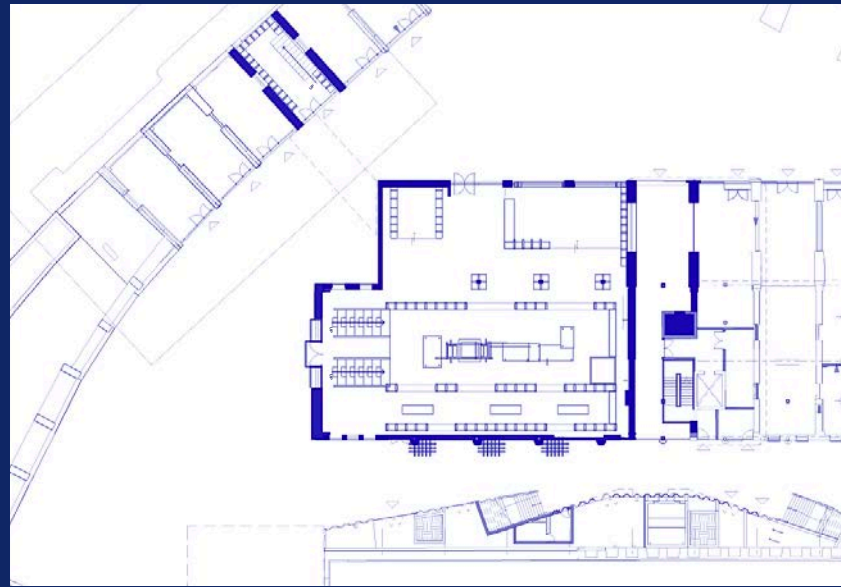
FIRST 3D MODEL



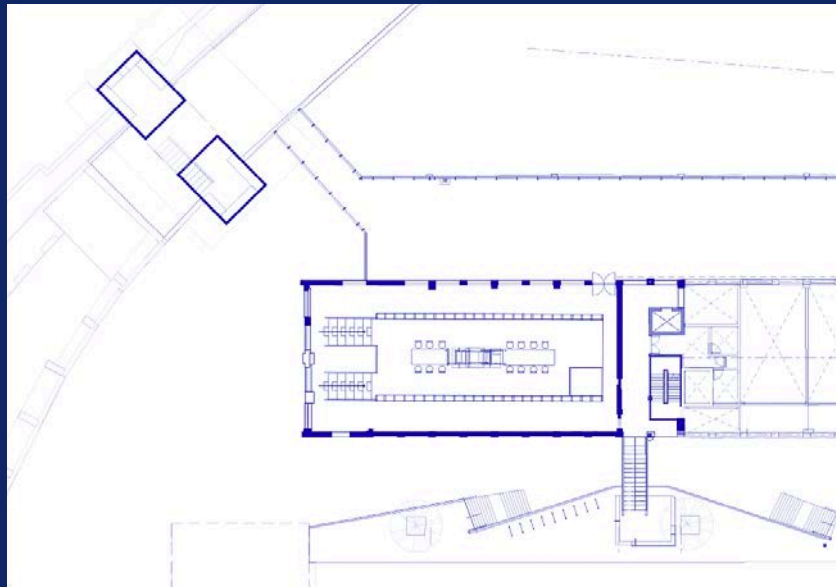
3D RENDERED MODEL



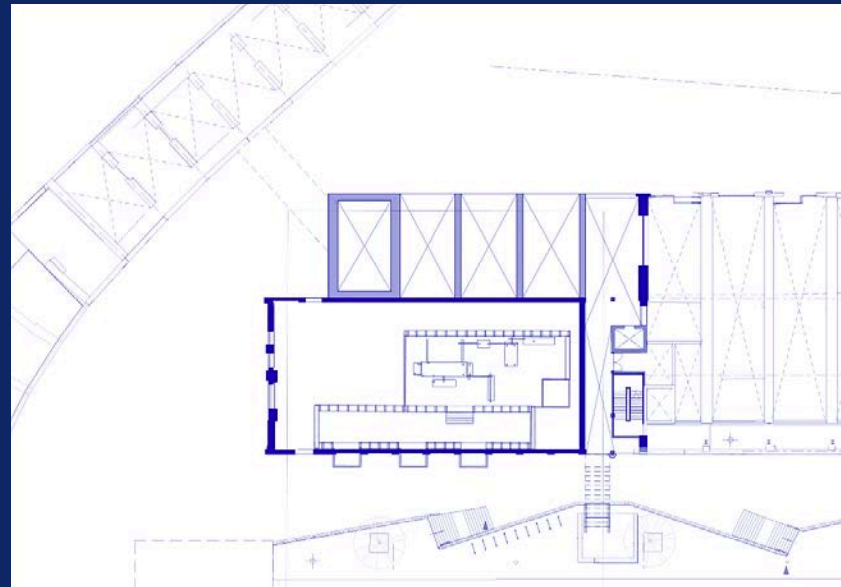




GROUND FLOOR



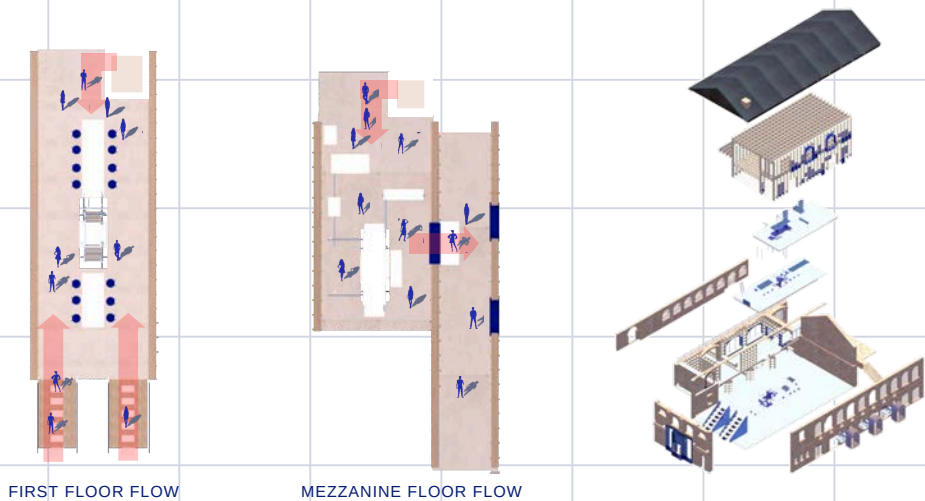
FIRST FLOOR



MEZZANINE FLOOR



SHORT SECTION



FIRST FLOOR FLOW

MEZZANINE FLOOR FLOW

**ENTRANCE AREA**

THIS IS THE MAIN AREA, WHERE YOU'RE FIRST GREETED BY THE CENTRAL STAIRCASE. YOU'LL OFTEN SEE PEOPLE SITTING HERE—READING, CHATTING, OR SIMPLY PASSING THROUGH. THE STAIRS LEAD UP TO AN ADDITIONAL WORKING SPACE ON THE MEZZANINE FLOOR, WHILE A TUNNEL NESTLED BENEATH THEM GUIDES YOU DOWN TO THE GROUND-LEVEL WORKSHOP.



**WORKSHOP AREA ( MEZZANINE FLOOR)**

GOING UP THE STAIRS, YOU CAN ALSO WORK ON YOUR WRITINGS HER, WITH MANY BOOKS THAT COULD INSPIRE YOU OR LEARN FROM, AND TABLES FOR YOU TO WORK ON YOUR WRITINGS

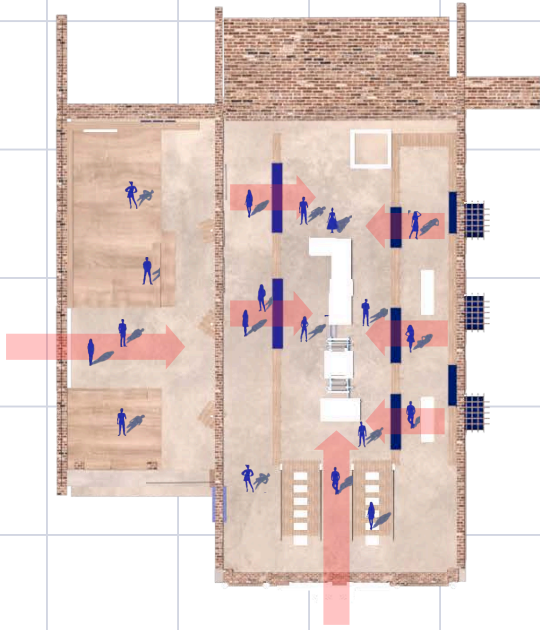


**WORKSHOP AREA ( GROUND FLOOR)**

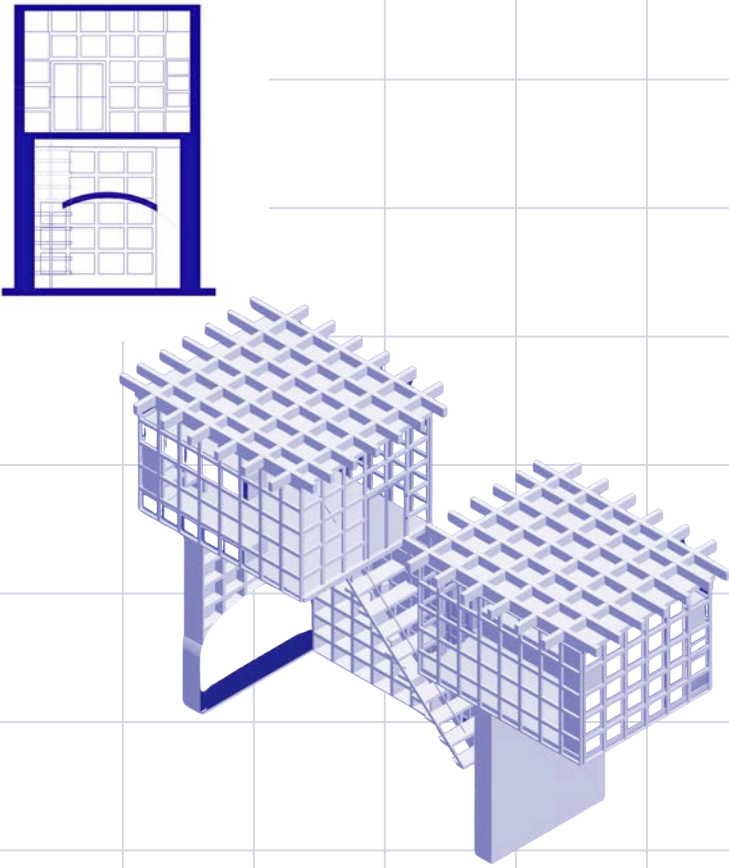
THE SPACE IS EQUIPPED WITH TABLES AND MONITORS TO SUPPORT YOUR CREATIVE PROCESS. ITS OPEN LAYOUT CONNECTS SEAMLESSLY TO THE EXHIBITION AND MATERIAL AREAS, CREATING A FLUID ENVIRONMENT FOR COLLABORATION, REFLECTION, AND SHARING IDEAS WITH OTHERS.

**WORKSHOP AREA ( GROUND FLOOR)**

EXHIBITION SPACE THAT DISPLAYS THE CURRENT PUBLISHING AND ALSO SHARING HISTORIES AND STORIES OF THE COMMUNITY, THE SHELVINGS KEEP ALL THE PREVIOUS PUBLISHED BOOKS WHILE THE MAIN TABLE DISPLAYS THE CURRENT ONE







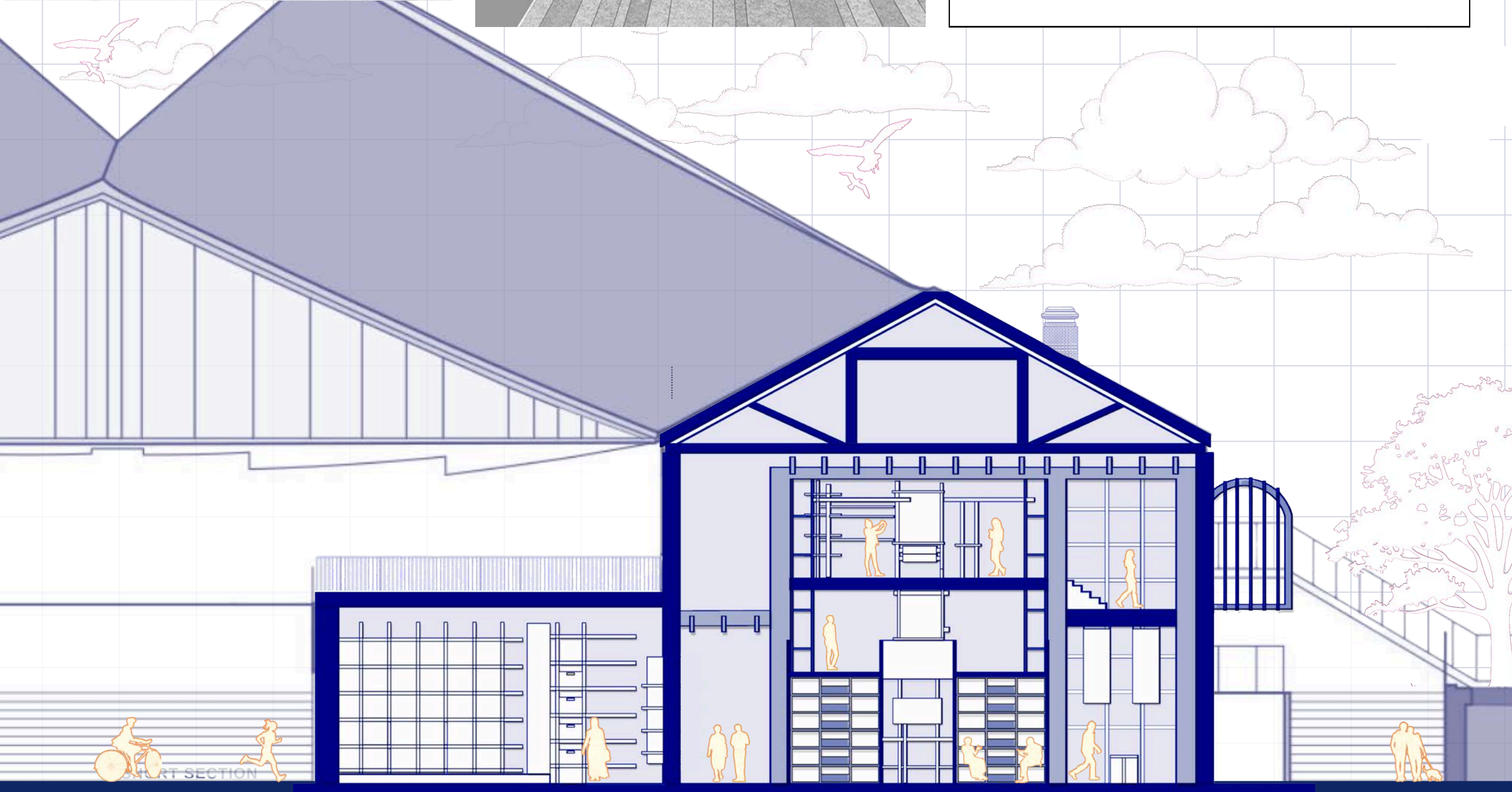
**READING NOOK**

"NOOK!" IS A READING SPACE OPEN FOR THE PUBLIC, WHERE THE PRINT SPACE ARE A BIT MORE PRIVATE TO THE COMMUNITY, THE PUBLIC CAN COME TO NOOK AND READ THEIR PUBLISHINGS TOO. THE STRUCTURE ALSO BLEED OUT FROM THE BRIDGE MAKING IT VISIBLE EVEN FROM THE CANAL AREA, USERS CAN READ WHILE LOOKING AT THE CANAL VIEW OR THE COAL DROPS YARD VIEW



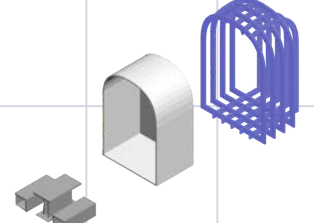
**READING SPACE IN "NOOK!"**

A QUIET SPACE TO READ ALL THE SELF PUBLISHED BOOK, A PALCE TO SWAP YOUR BOOKS, AND IT ALSO NATURALLY ACTS AS AN ARCHIVES FOR THE COMMUNITY THAT HAD WRITTEN THEIR PART OF THE STORY TO BE HEARD



**PROOFREADING SPACE**

PROOFREADING BOOTHS FOR USERS TO SIT AND RECHECKS THEIR WRITING BEFORE PRINTING, THE PROOFREAD SPACE IS ALSO BESIDE THE PRINTING AREA



MATERIAL SELECTION AREA

WORKSHOP AND PRINTING AREA

EXHIBITION AREA

PROOFREAD BOOTH