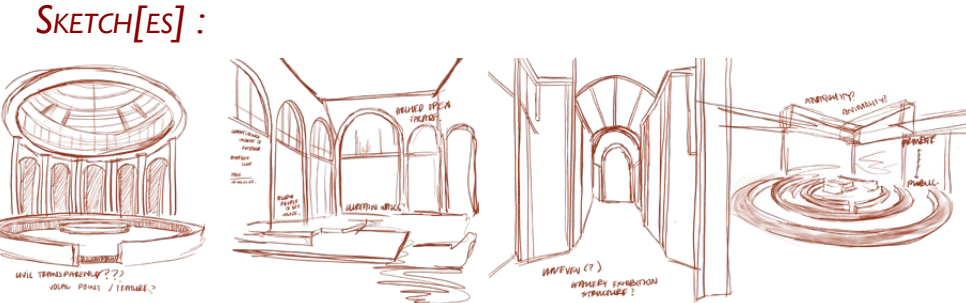
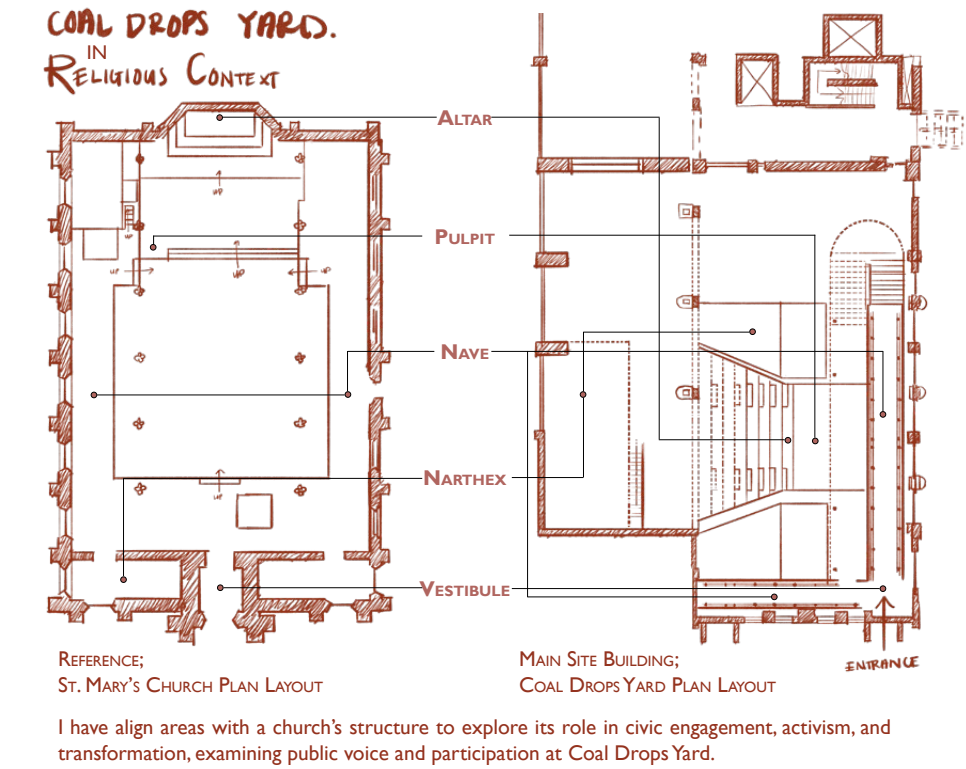
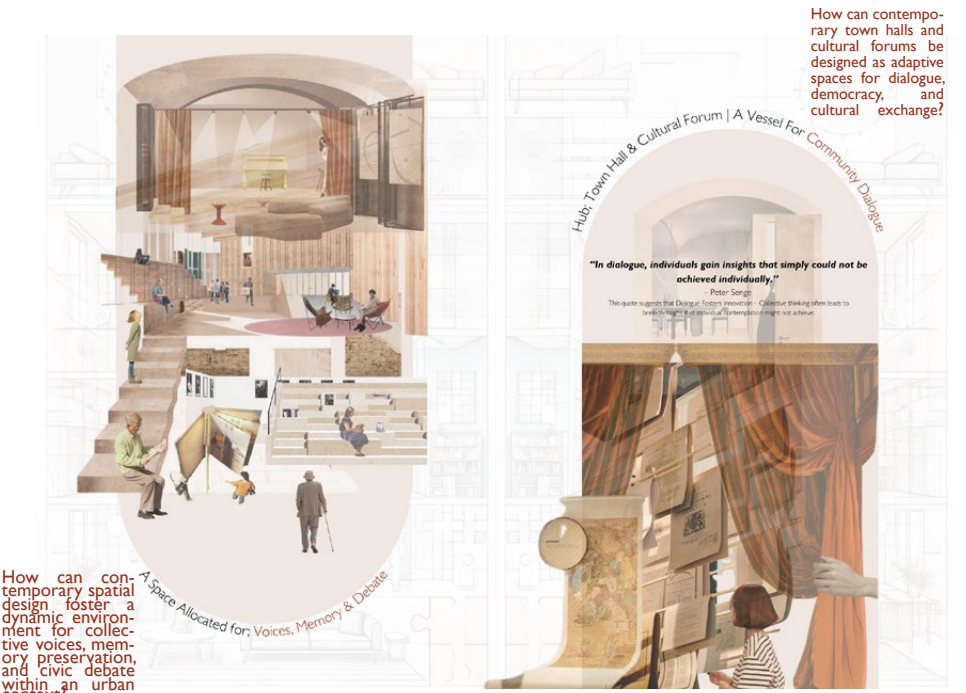


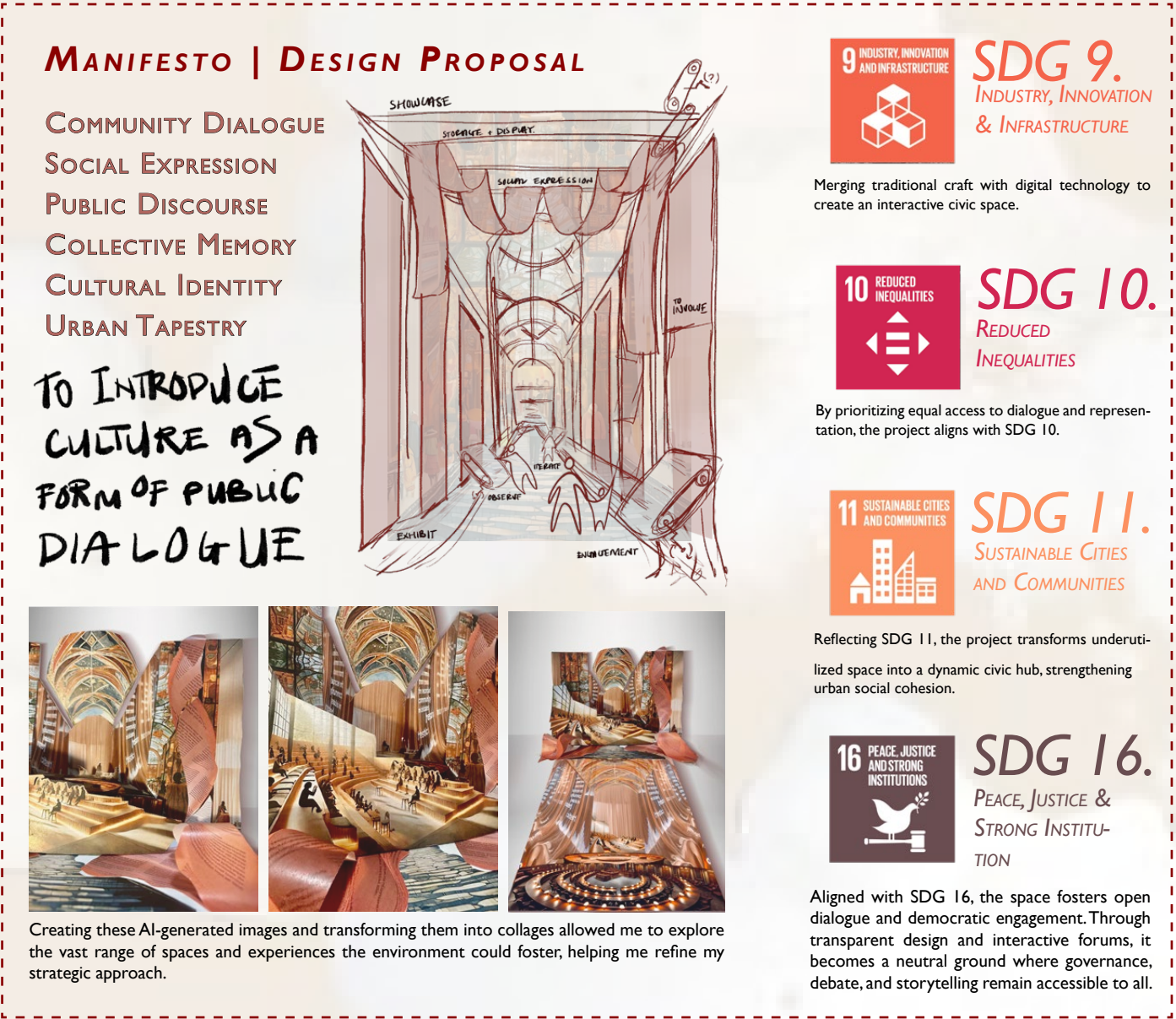
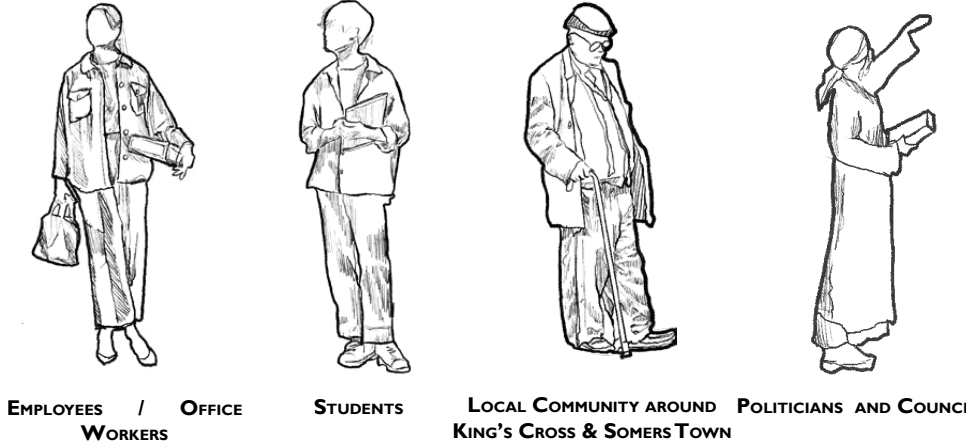
The Civic Chamber

This project explores how civic spaces can become platforms for social justice by fostering open dialogue, collective storytelling, and equitable public participation. Rooted in the layered social and architectural histories of Coal Drops Yard and Somers Town, the design actively challenges the exclusionary tendencies of commercialised urban regeneration.

Through a constellation of spatial interventions—from debate chambers to interpretation zones—the proposal amplifies marginalised, archived, and contemporary voices alike. By reimagining civic infrastructure as a space of inclusion, transparency, and co-authorship, the project advocates for a more dignified and democratic urban experience that honours the diverse realities of all communities.

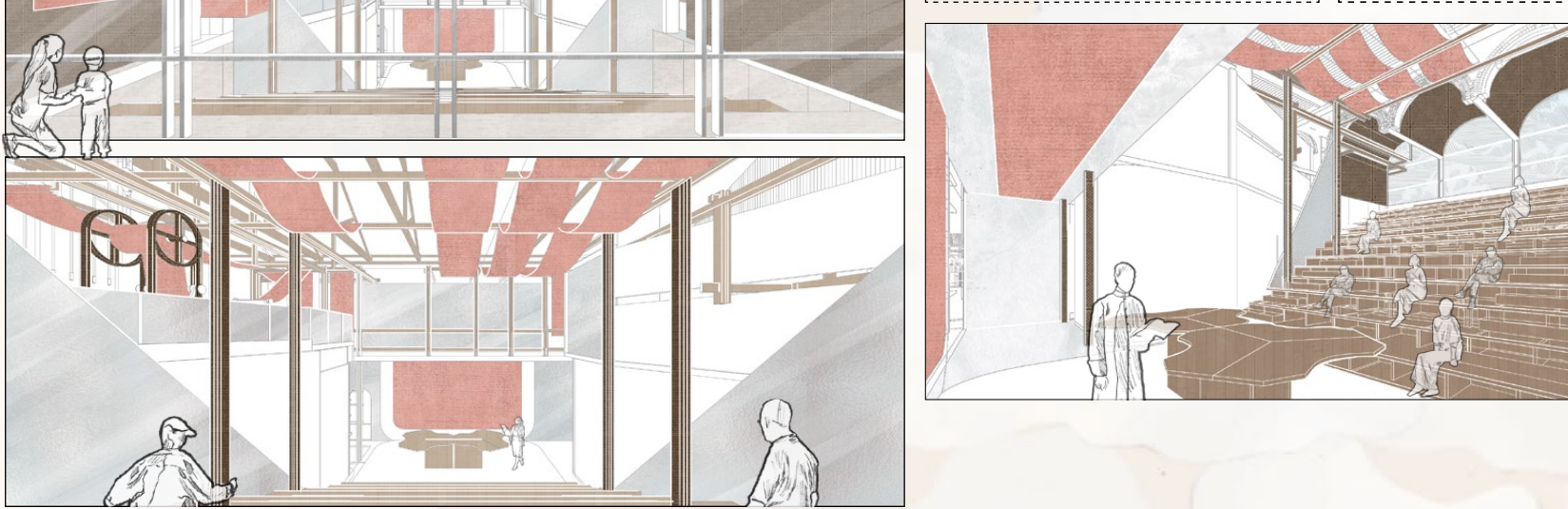
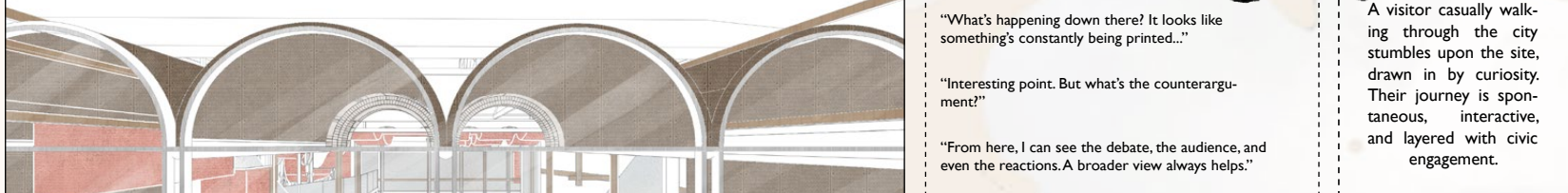
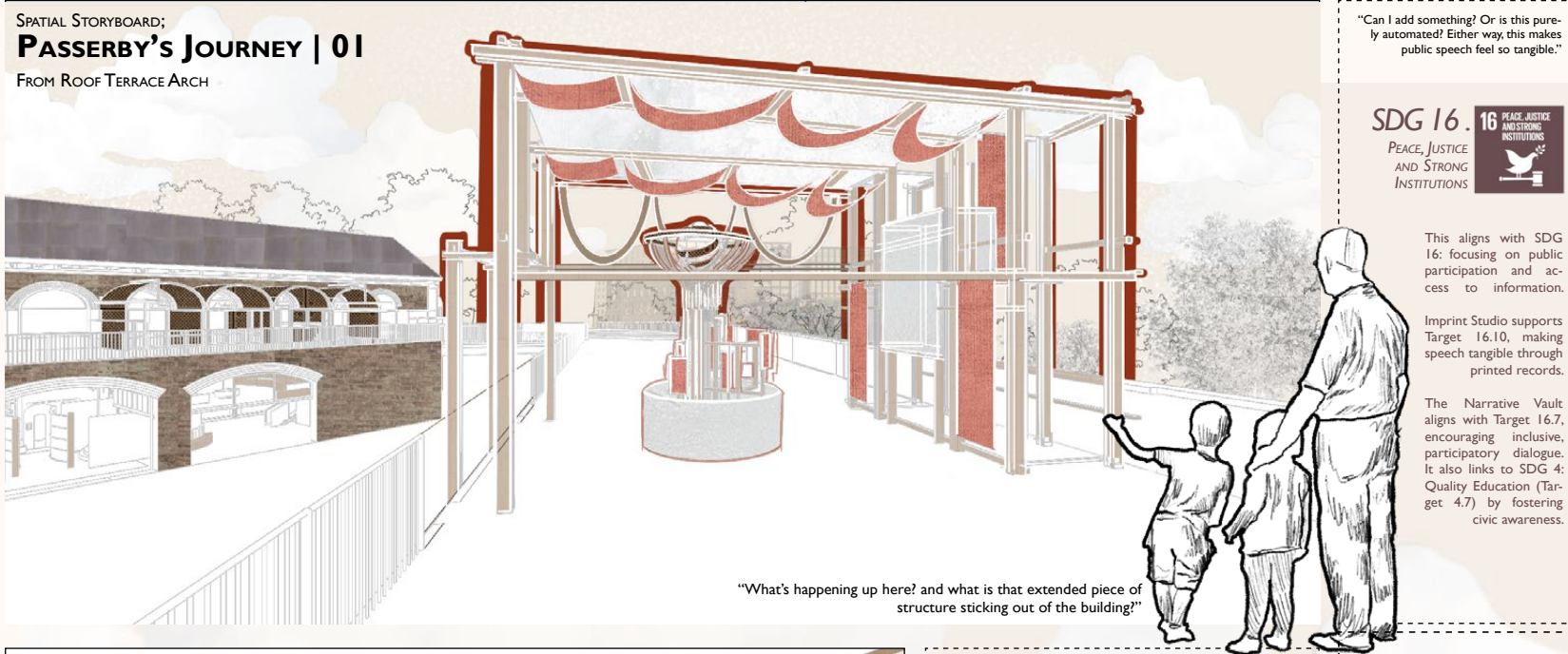


TARGET USER[S]

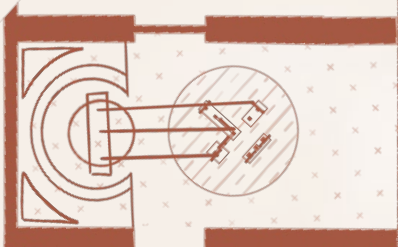


How can
political
elements
change
urban
exclusivity?

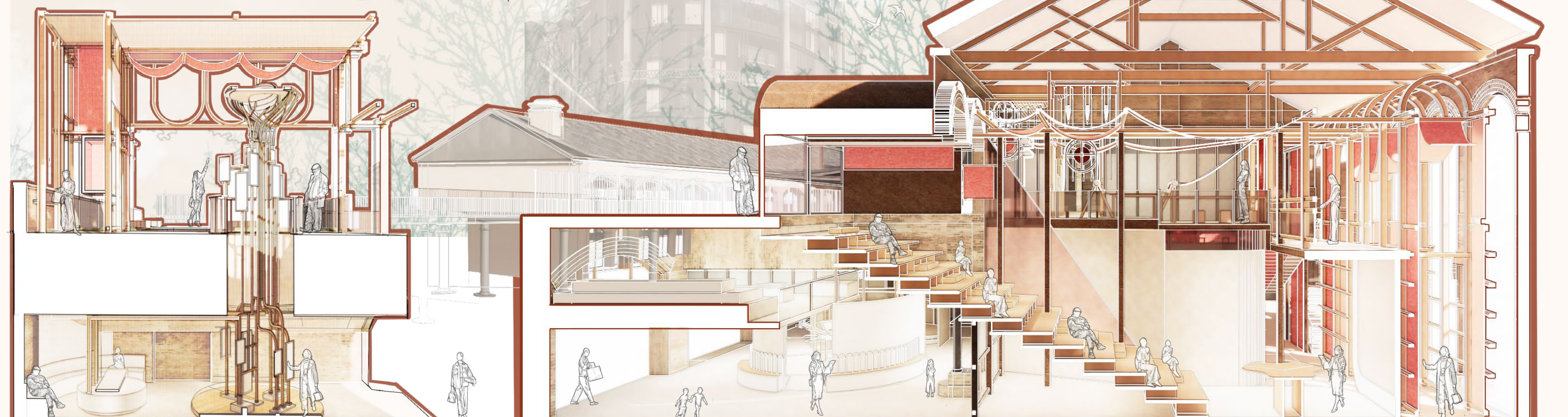
SPATIAL STORYBOARD:
PASSERBY'S JOURNEY | 01
FROM ROOF TERRACE ARCH



"I can hear the discussion, but I can also see it in print—it's like history being recorded in real-time."



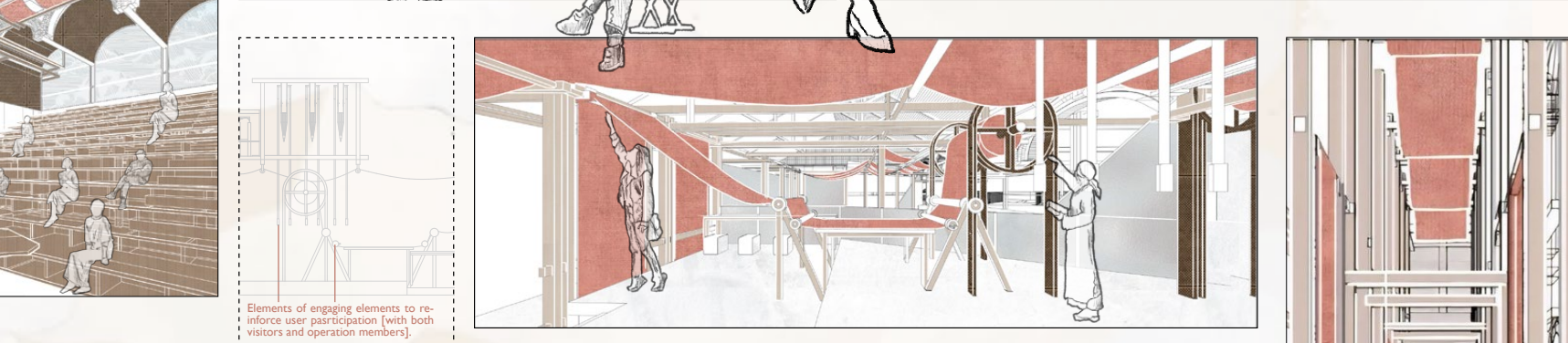
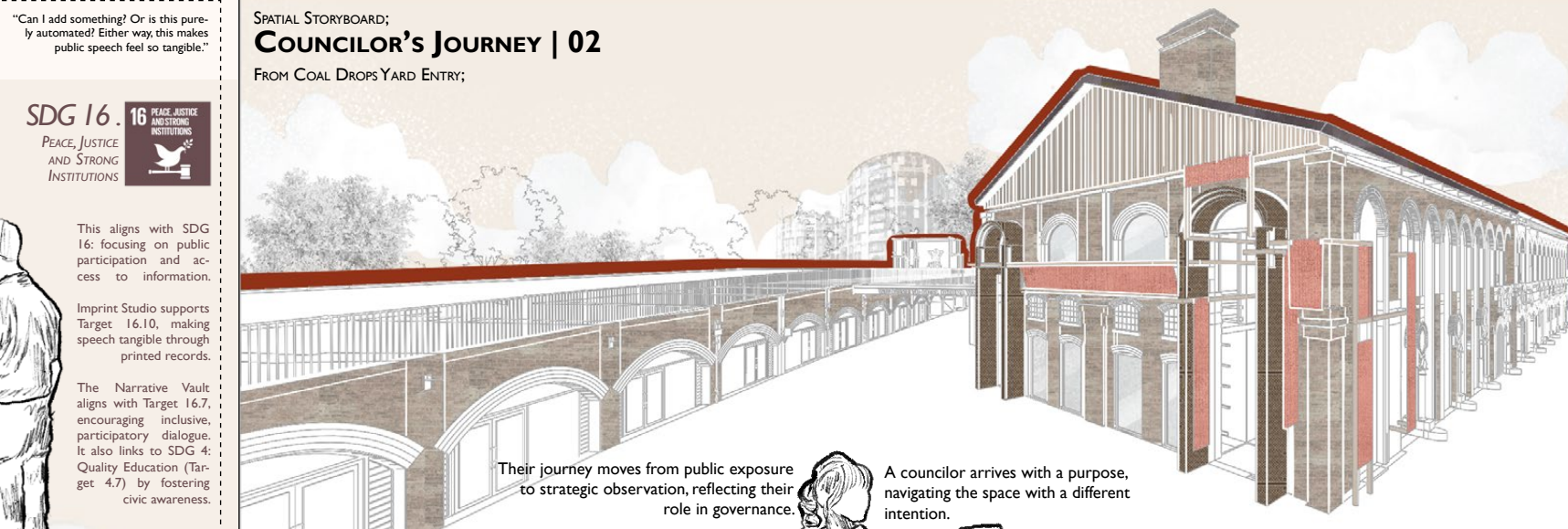
ARCH GROUND FLOOR PLAN



ARCH BUILDING -
LONG HERO SECTION



SPATIAL STORYBOARD:
COUNCILOR'S JOURNEY | 02
FROM COAL DROPS YARD ENTRY;



"From here, I can see the debate, the audience, and even the reactions. A broader view always helps."

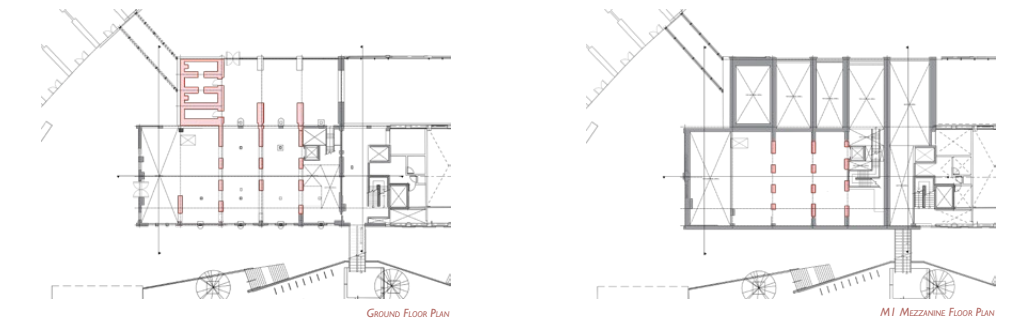


"These debates are being printed live faster than usual That's incredible—you can literally see the conversation unfold in real-time."

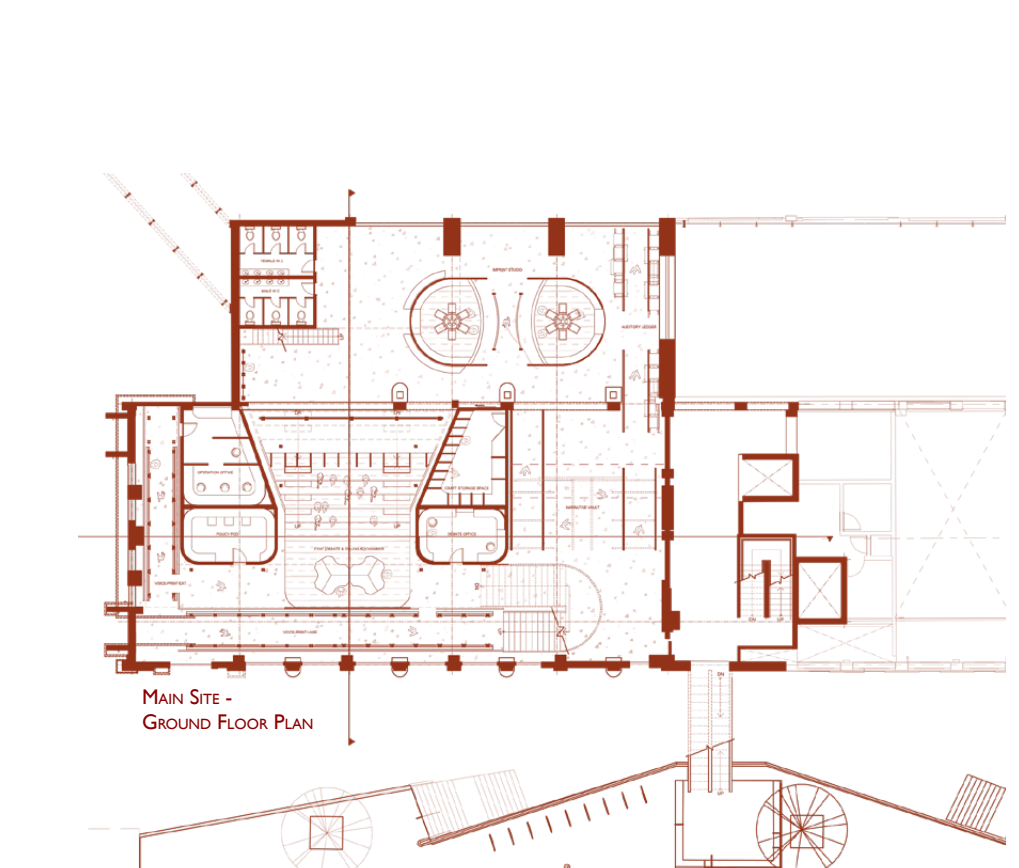
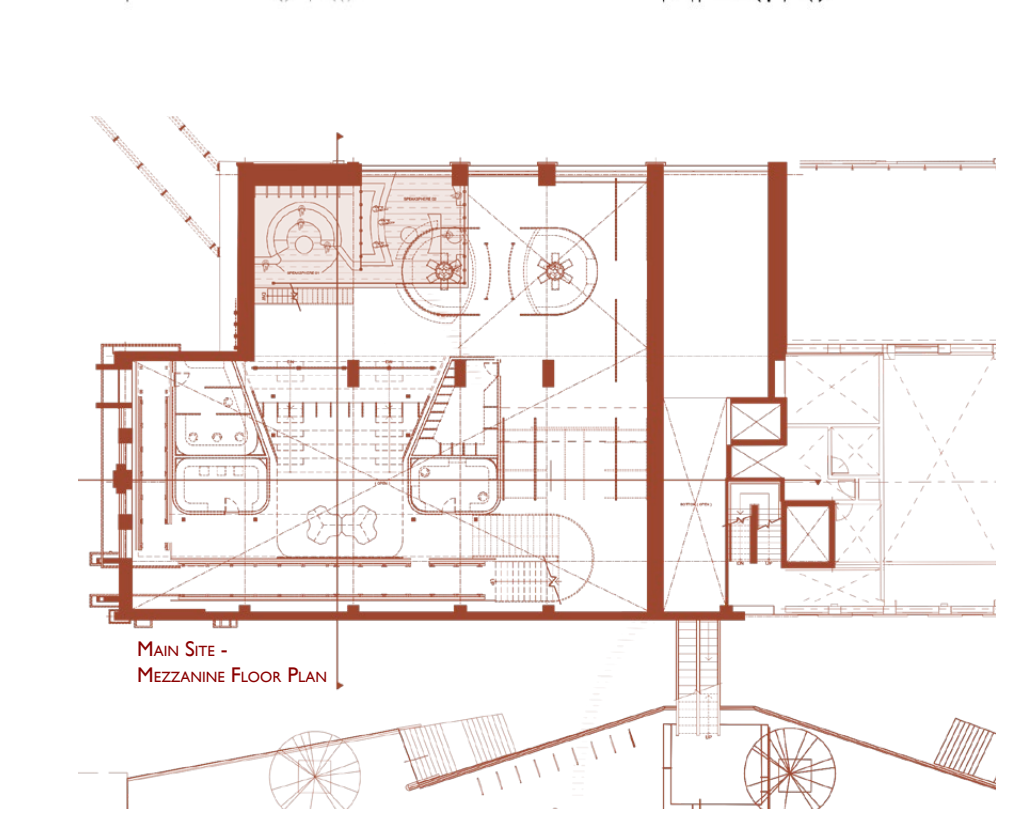
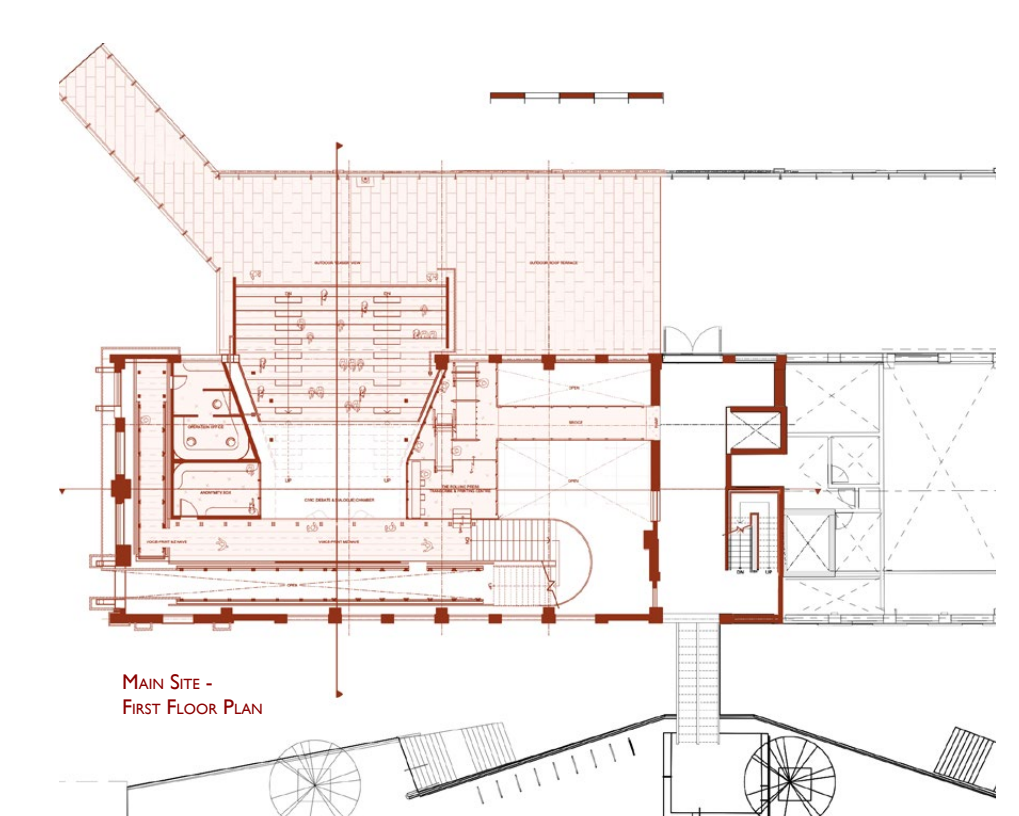
MAIN BUILDING -
SHORT HERO SECTION



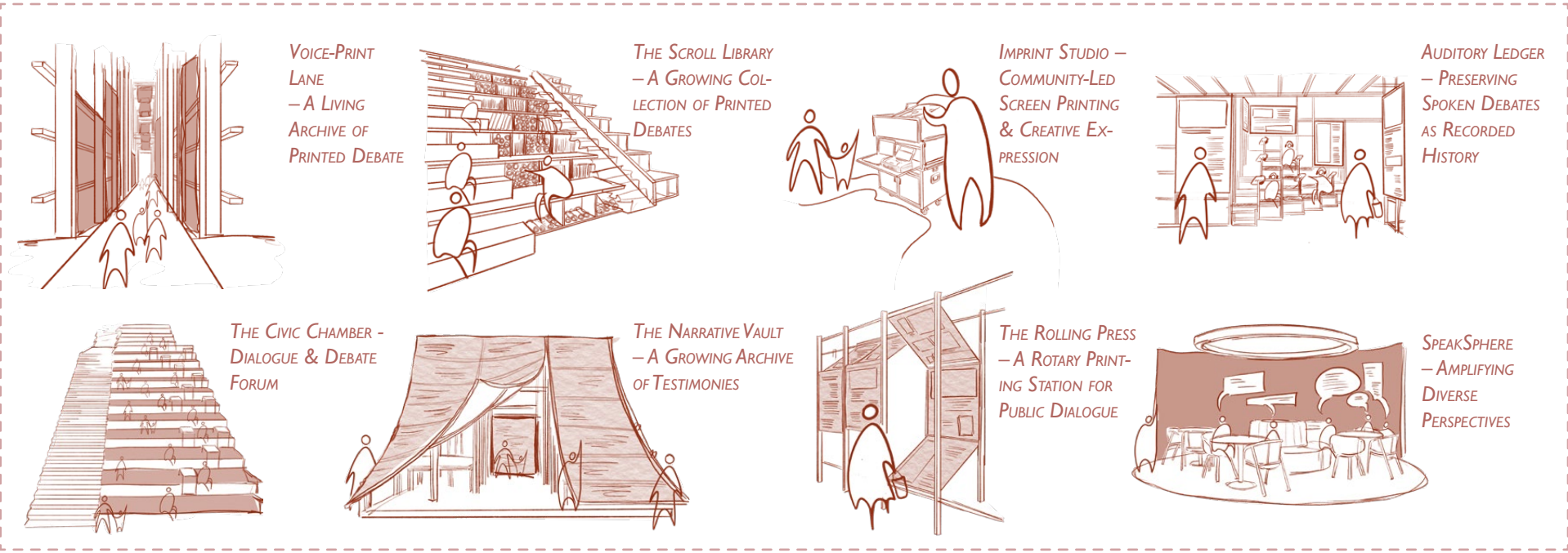
FINAL DEMOLITION PLAN



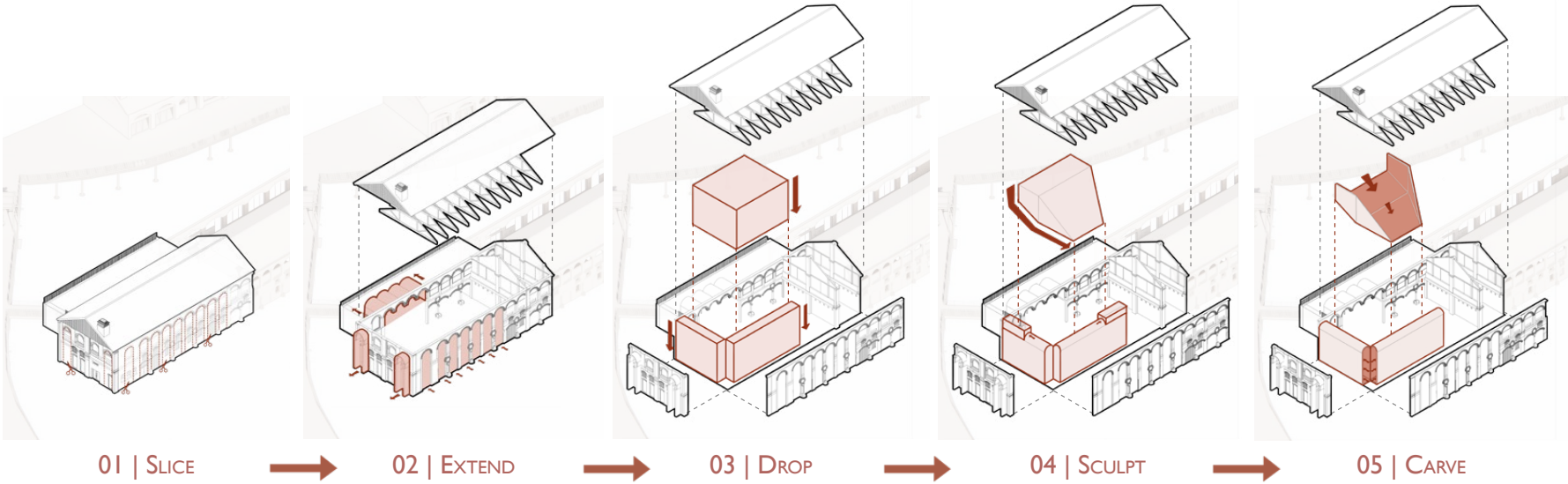
FINAL FLOOR PLANS



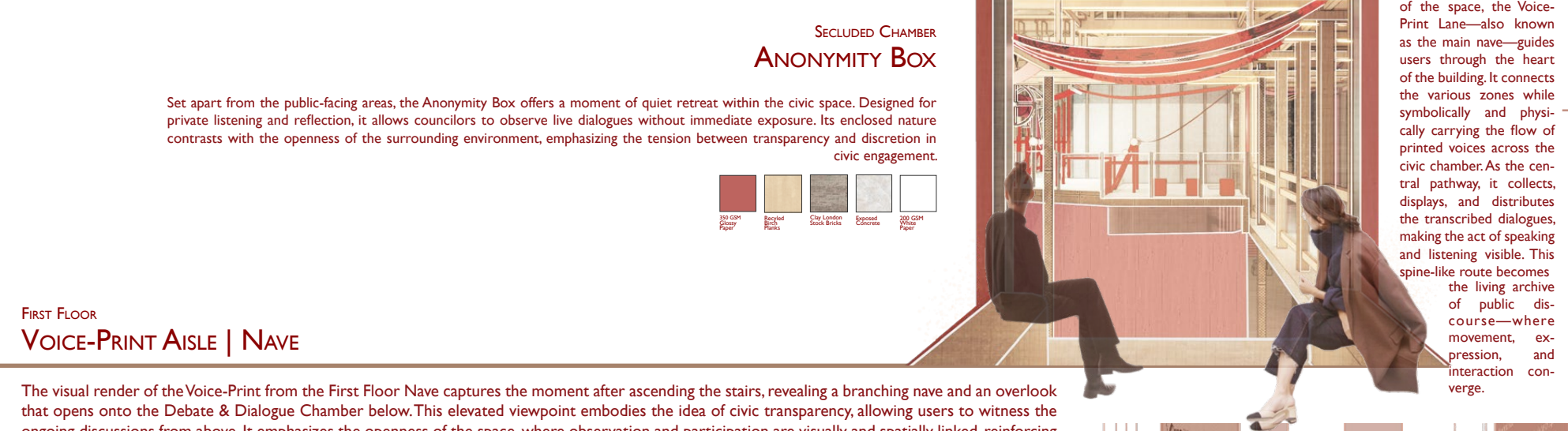
ACTIVITIES PROGRAMMING



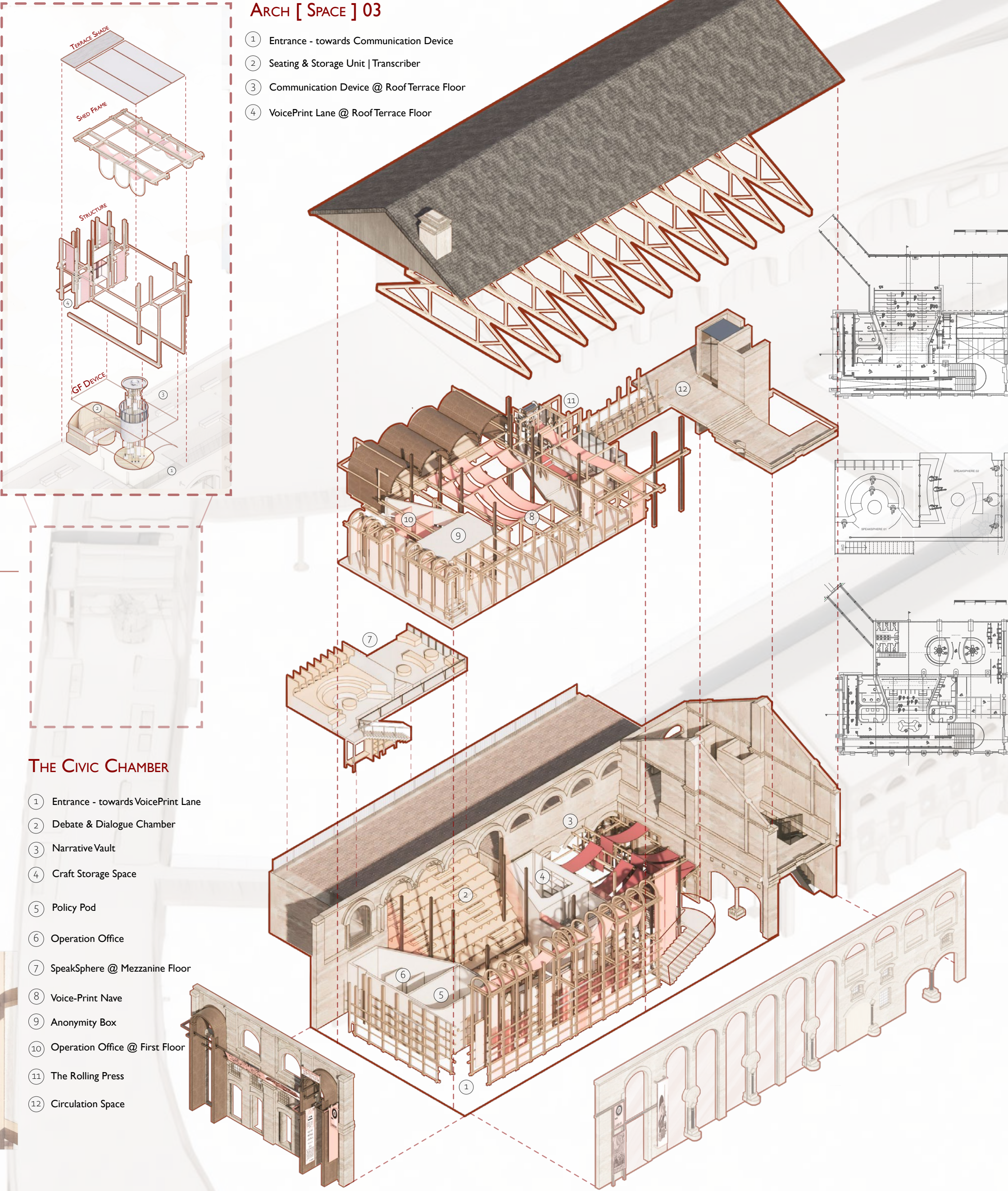
SEQUENTIAL DIAGRAM



VISUALS | 2-POINT-PERSPECTIVES



THE CIVIC CHAMBER
DETAILED AXONOMETRIC

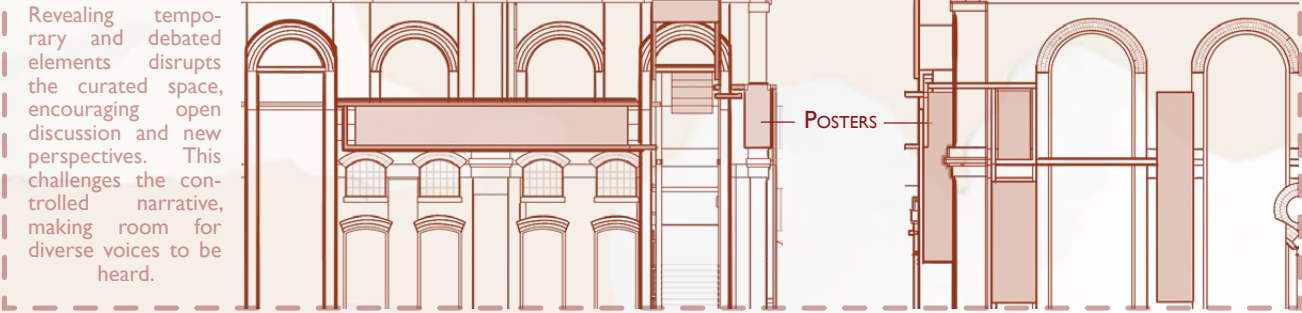


FACADE CHANGES -
BRINGING THE STRUCTURAL ELEMENTS FROM THE INSIDE TO THE OUTSIDE

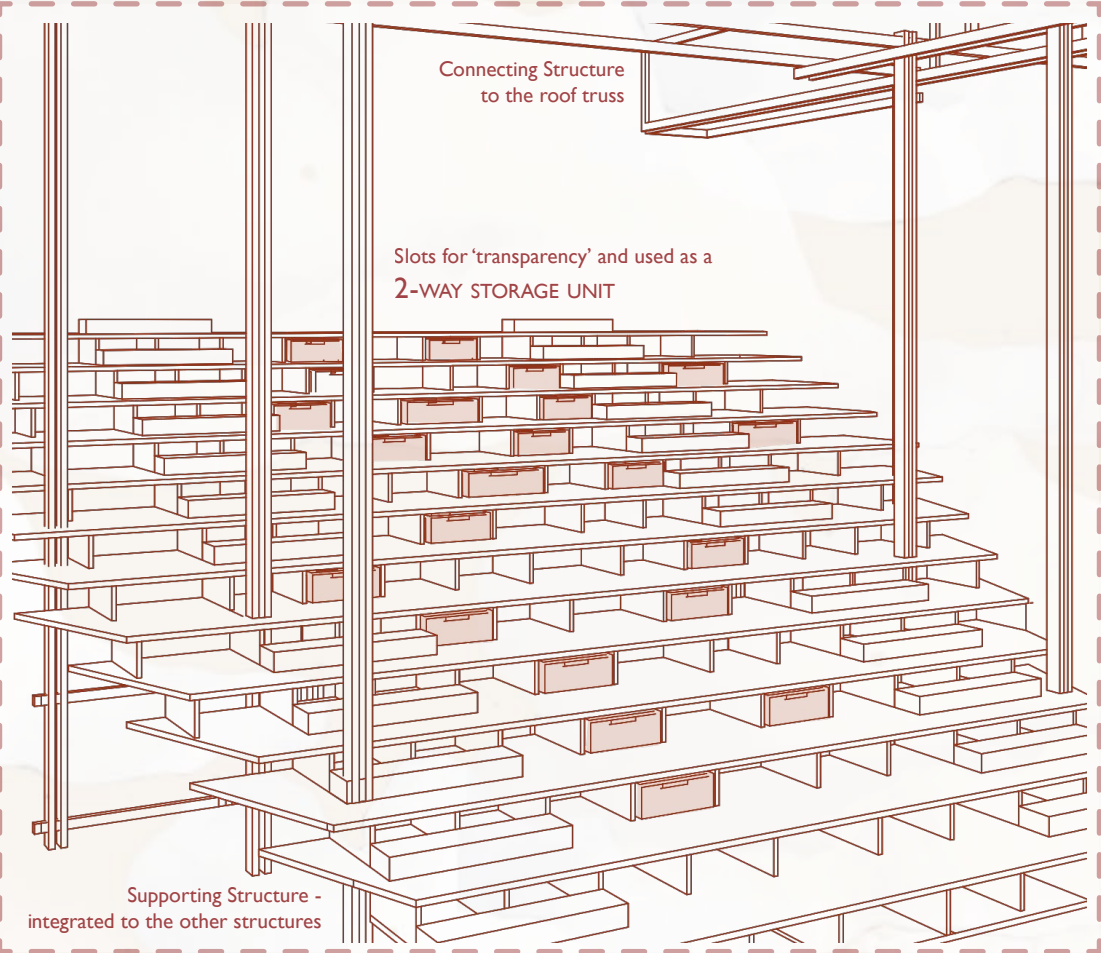


Bringing interior elements to the exterior aligns with my design typology, blurring the boundaries between inside and outside. This creates a seamless flow and fosters a deeper connection between the building and its environment, enhancing the user experience.

EPHEMERAL ELEMENTS - POSTERS OUTSIDE



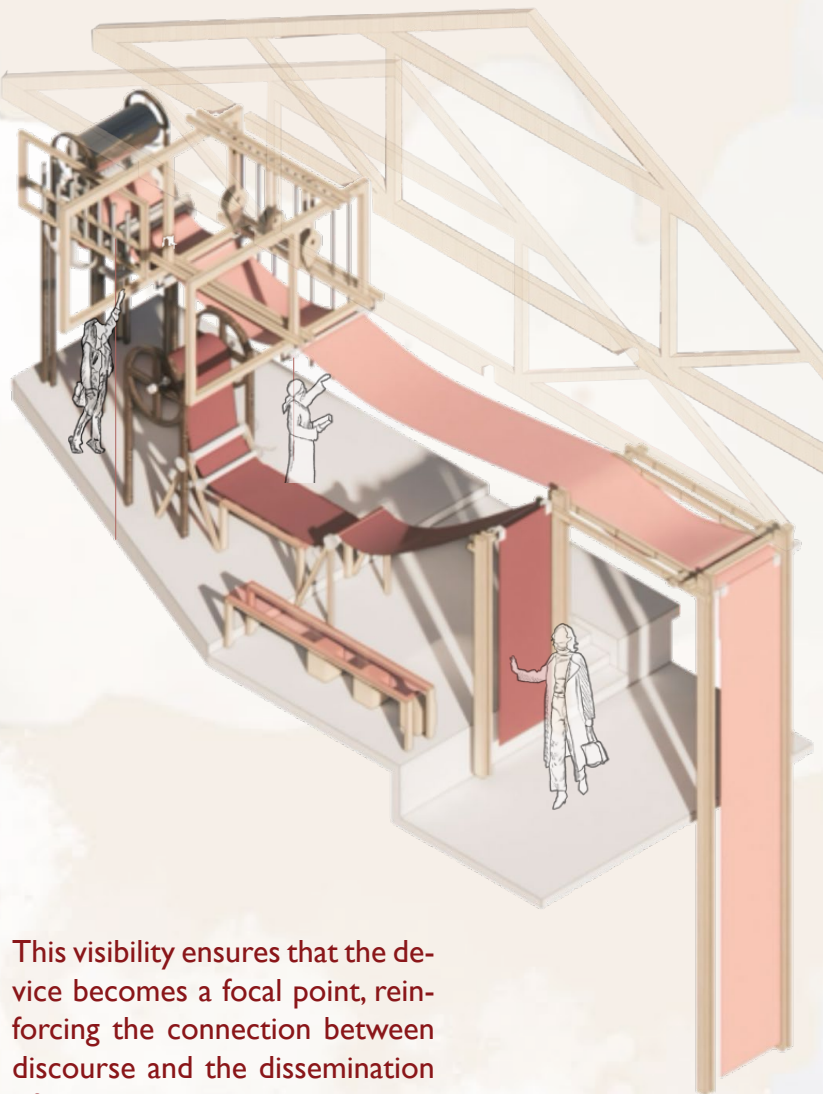
STRUCTURE DETAIL -
SEATING & STORAGE UNIT - DEBATE AND DIALOGUE CHAMBER



KEY STRUCTURE

MAIN DEVICE -
THE PRESS PRINT [LOCATION: FIRST FLOOR]

Key [visual] elements of the main printing device should be visible from the lift entry points, particularly near the debate and dialogue chamber.



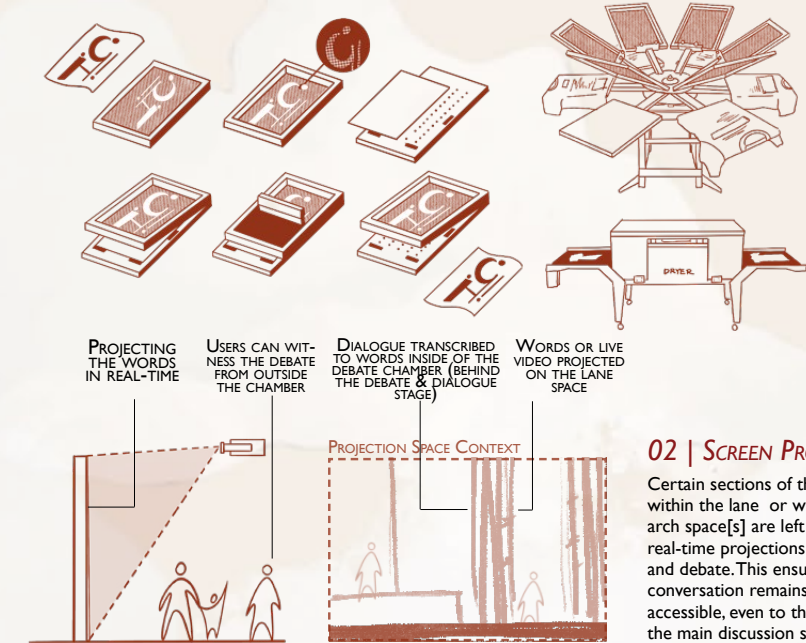
This visibility ensures that the device becomes a focal point, reinforcing the connection between discourse and the dissemination of ideas throughout the space.

DEVICE 01

PROGRAMMATIC DESIGN APPROACH -
METHOD[S] OF INTERPRETATION

01 | SCREEN PRINTING

Integrated as an interactive activity, allowing users to engage in a hands-on form of social expression by printing key phrases or visual responses from the discussions onto fabric or paper.



02 | SCREEN PROJECTOR

Certain sections of the tapestry within the lane or within the arch space[s] are left blank for real-time projections of dialogue and debate. This ensures that the conversation remains visible and accessible, even to those outside the main discussion space.

GROUND FLOOR FEATURE -
NARRATIVE VAULT



DEVICE 02

2-POINT PERSPECTIVE | VISUALS

ROOF TERRACE | FIRST FLOOR
OUTDOOR 'TEASER' VIEW



DAY TIME VIEW

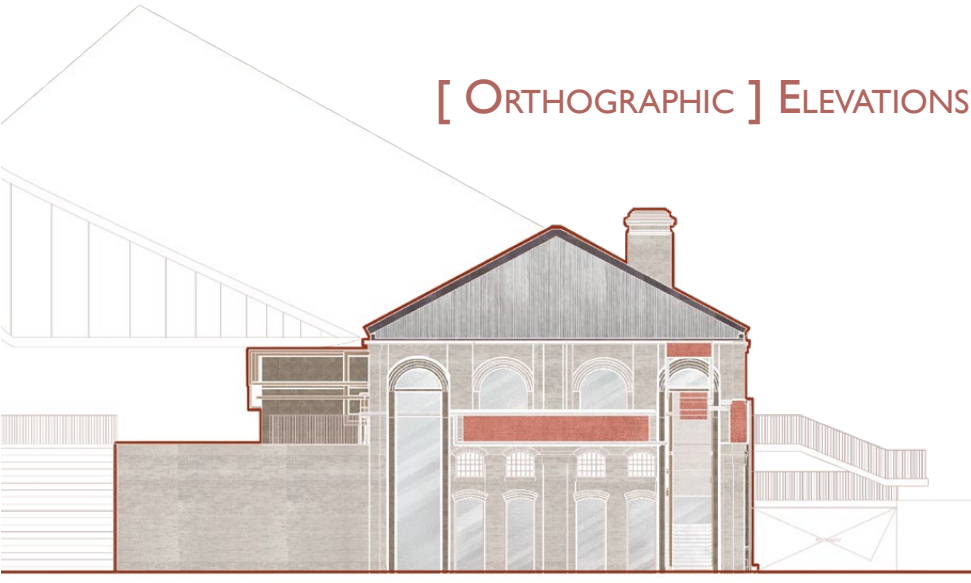
During the day, the debate chamber buzzes with active, ephemeral, and political activities, as voices fill the space with energy and civic engagement.



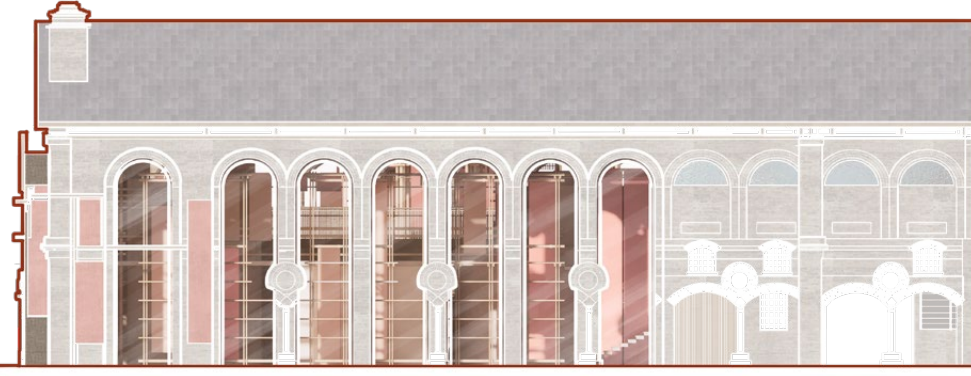
NIGHT TIME VIEW

At night, the space transforms, with tables and chairs set for dining, offering a more relaxed environment for users to gather and unwind.

[ORTHOGRAPHIC] ELEVATIONS

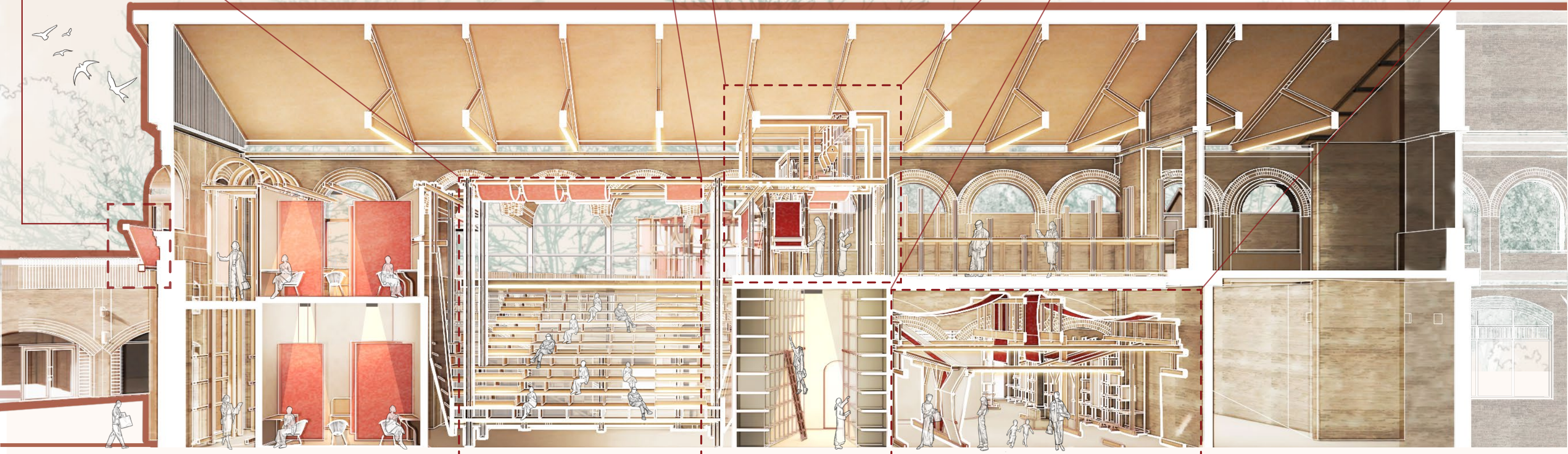


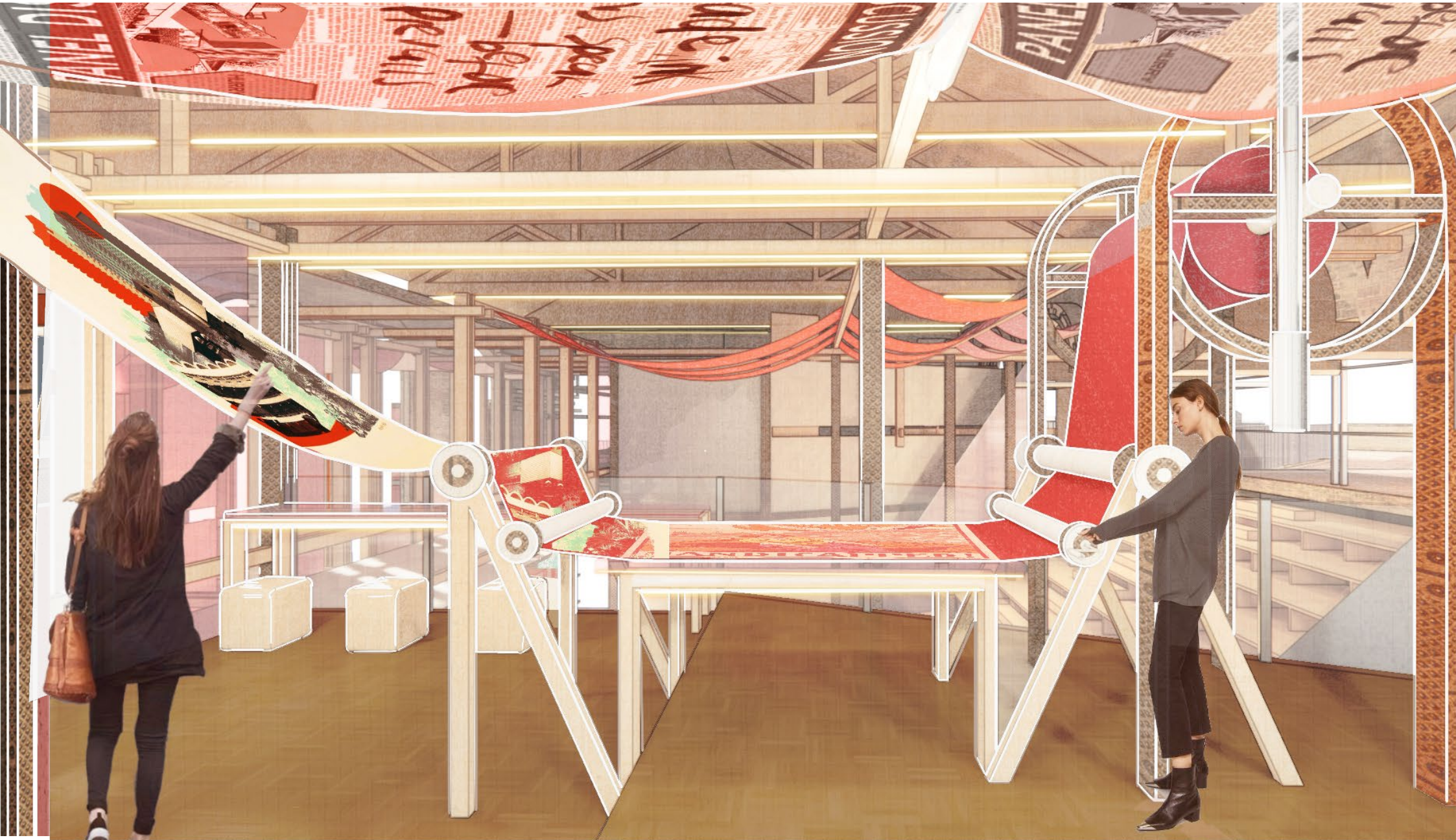
FRONT ELEVATION



EAST ELEVATION

MAIN BUILDING -
LONG HERO SECTION





FINAL DESIGN VISUAL -
THE ROLLING PRESS



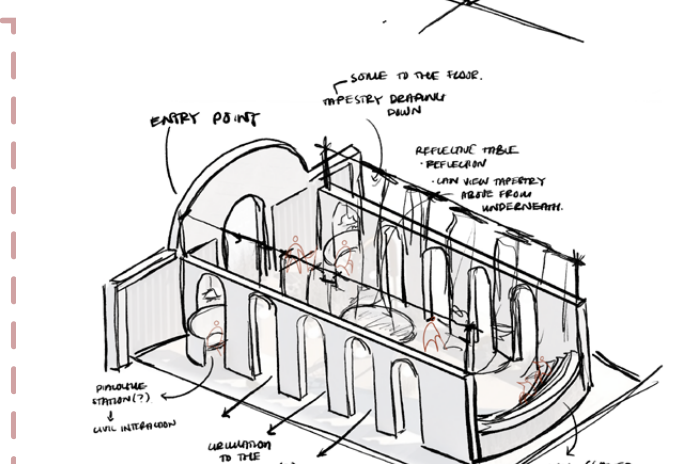
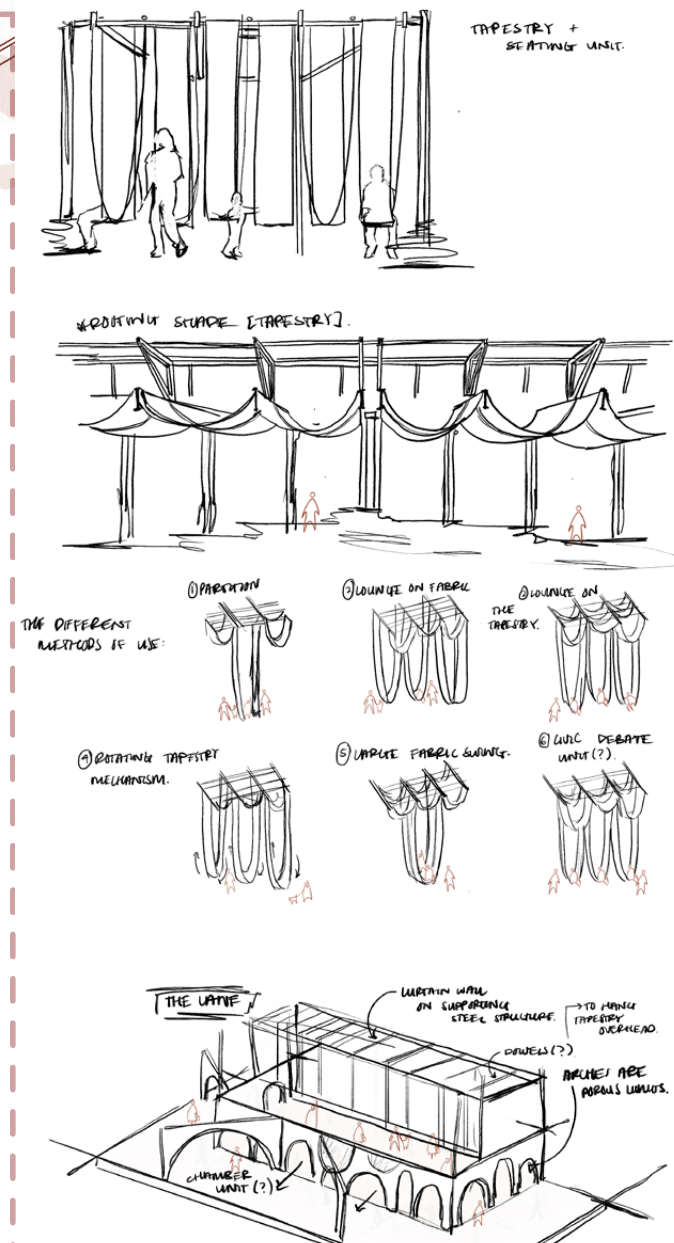
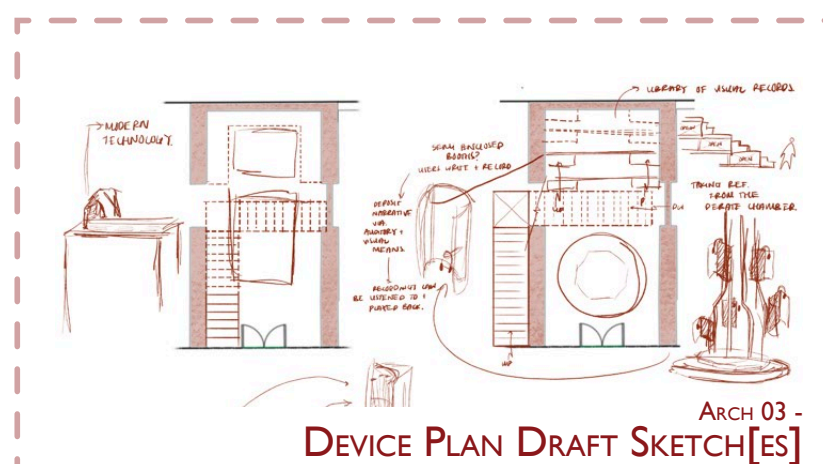
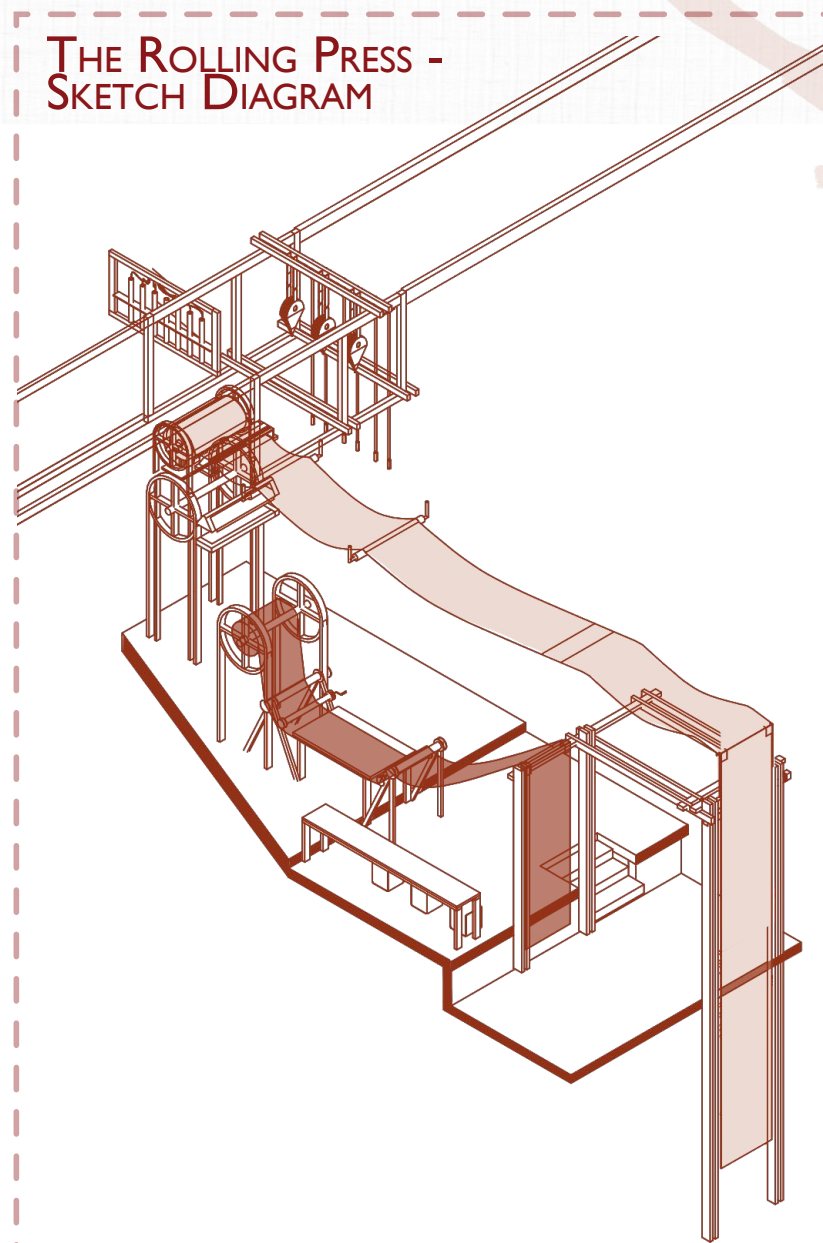
FINAL DESIGN VISUAL -
AUDITORY LEDGER



DEBATE & DIALOGUE CHAMBER -
DEBATER / COUNCILOR'S POINT OF VIEW



ROOF TERRACE -
ARCH TRANSCRIBING DEVICE



FINAL DESIGN COMPONENT -
SECTIONAL MODEL | 1:50 SCALE



The sectional model explores the spatial relationships and vertical dynamics within the design, revealing how different levels interact.

It highlights transitions, thresholds, and the integration of private and public areas, offering a deeper understanding of the architectural experience and ensuring coherence in functionality and form.

This model also emphasizes the flow of movement and light throughout the space.

