

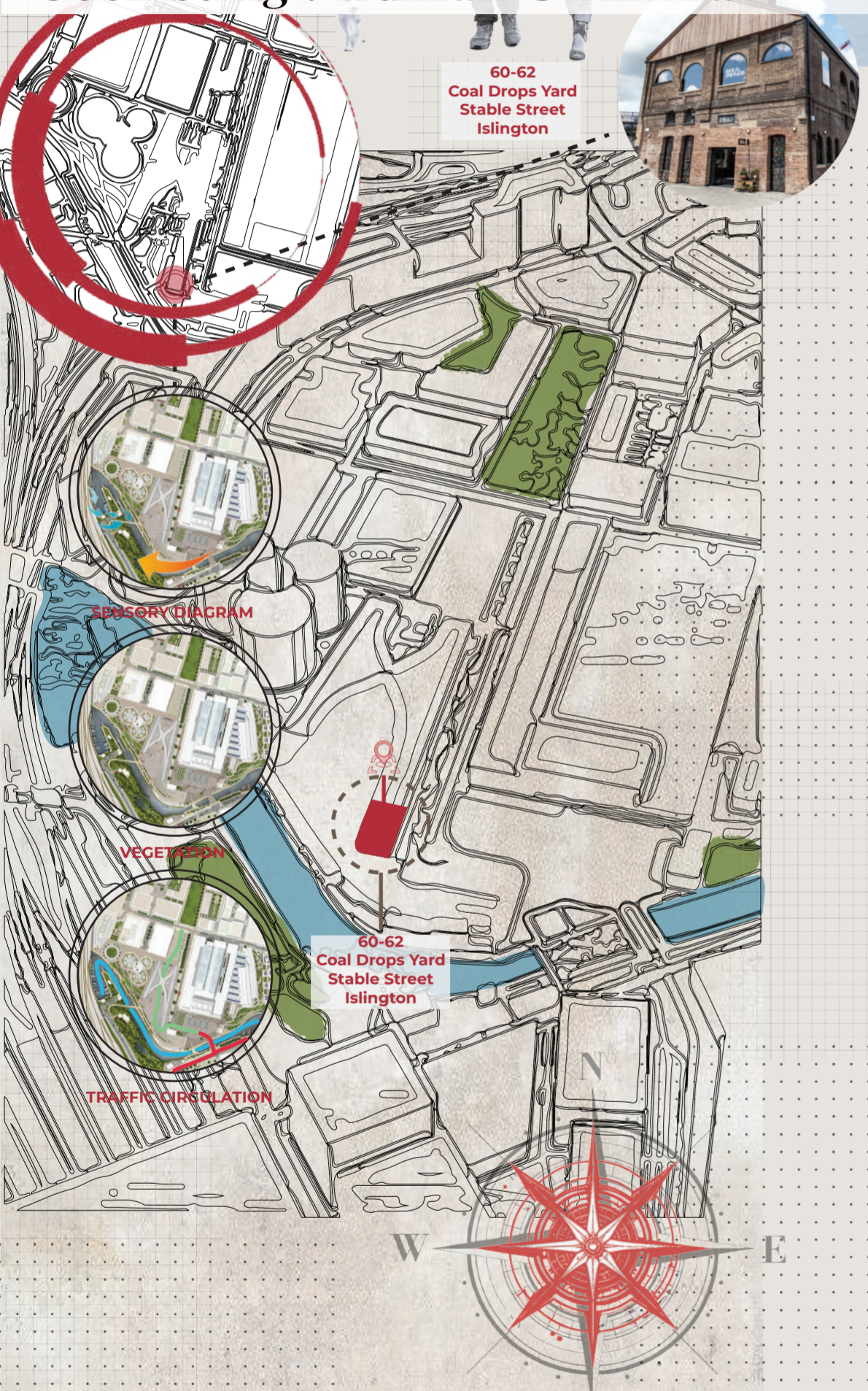


PET SANCTUARY

CO-WORKING

# Pawfect Sanctuary

## Coexisting : Human & Animal



### INTRODUCTION

This project aims to revolutionize Coal Drops Yard by establishing a Pet Therapy Community, dedicated to enhancing mental well-being through innovative design. At its core lies a visionary pet sanctuary, bridging the gap between animals and humans, fostering community engagement, and providing essential services to promote holistic pet care. Through a blend of pet-centric amenities, educational initiatives, and therapeutic spaces, the project seeks to create a harmonious environment that fosters the well-being of both pets and their owners.

### PROBLEMS & ISSUE

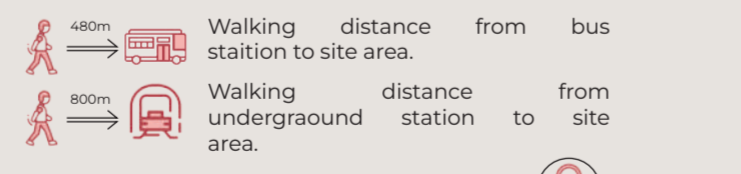
In urban areas like Coal Drops Yard, where residents often experience high levels of stress and isolation, a pet sanctuary can serve as a vital community hub. Not only does it provide a welcoming environment for people to connect over their shared love for animals, fostering a sense of belonging, but it also addresses the challenge of busy urban lifestyles by offering a pet kindergarten. This innovative solution provides a safe and stimulating space where pets can socialize and learn, even when their owners are occupied with their daily routines.

### ACCESSIBILITY

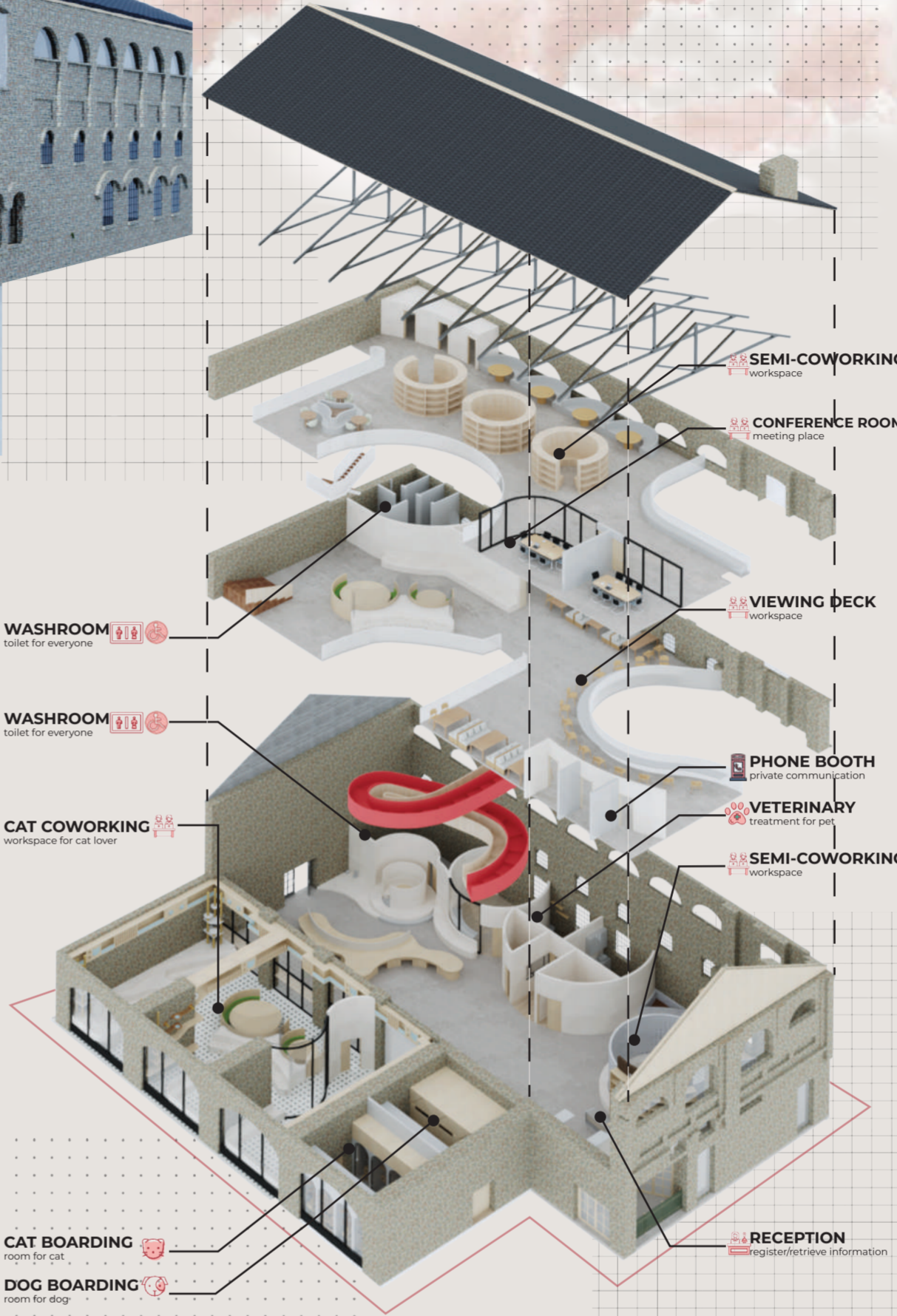
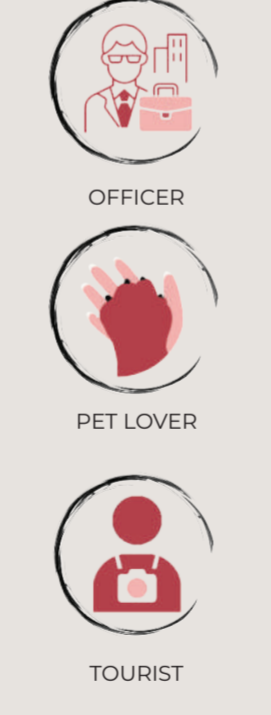
- Well-connected by various modes of public transportation, including buses, underground trains (Tube), and national and international rail services.
- Pedestrian-friendly environment with well-designed walkways and pathways.
- Bicycle-friendly infrastructure with dedicated bike lanes and parking facilities.

### STRATEGIC LOCATION

- Proximity to major transportation hubs: King's Cross and St Pancras International railway stations.
- Adaptive reuse of heritage buildings, such as the coal drops structures.
- Surrounding by diverse neighborhoods, educational institutions, cultural attractions, and green spaces



### TARGET MARKET



# Cat Lover Zone



Nestled beside a circular seating bench, the cat shelf stands as a charming addition to the living space. The cat shelf crafted from sturdy plywood, its durability and sustainability. Whether lounging lazily on the shelf or snuggling up on the bench, both humans and cats can enjoy moments of serenity and companionship in this inviting space.

The cat shelf is like a ladder for cats, attached to the wall with strong screws. Cats can climb up it to reach the top, where there's a special platform for them to relax and hang out. It's their own little high-rise hideaway where they can watch the world from above and take catnaps in peace.

The ceiling cat shelves is like a cozy perch for cats up high, while down below is a place where people can work together. It's a neat setup where cats can hang out while people chat and get things done. It's a friendly space where everyone can enjoy each other's company, whether they're human or pet.



## SUSTAINABLE MATERIALS



### TERAZZO TILES

- Environmental friendly, low cost, durable and low maintenance.

### MARBLE

- Elegance and durability, enhancing the aesthetic appeal of any space while providing long-lasting functionality.

### PINE WOOD

- Natural material, renewable resources, durable and resistance.

### GREEN PLANT

- Improve air quality, energy cost reduction, noise level reduction.

### REEDED GLASS

- Ability to provide privacy while still allowing natural light to pass through.

### OLD BRICK

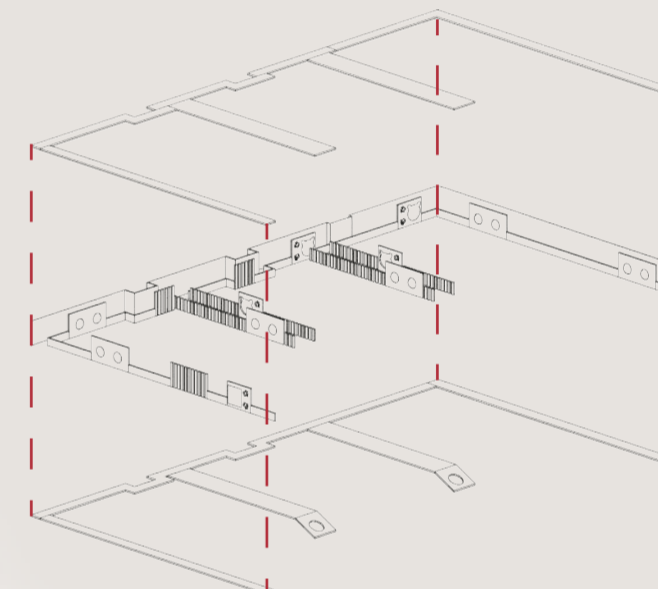
- Preservation of historical charm and character, adding unique and rustic aesthetics to new construction or renovation projects.

### MICROCEMENT

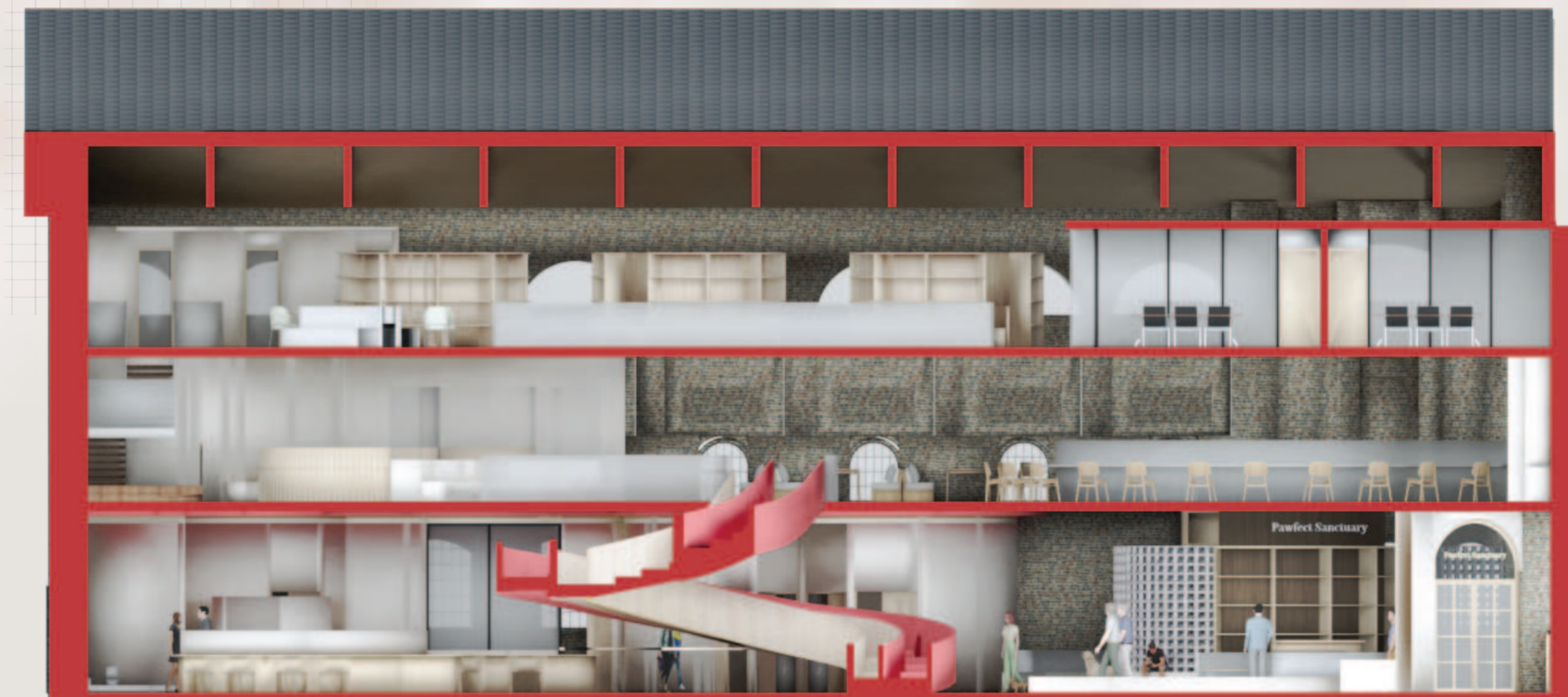
- Its versatility, creating a seamless and contemporary look.

### LAMINATE

- Resistant to scratches, stains, and fading.



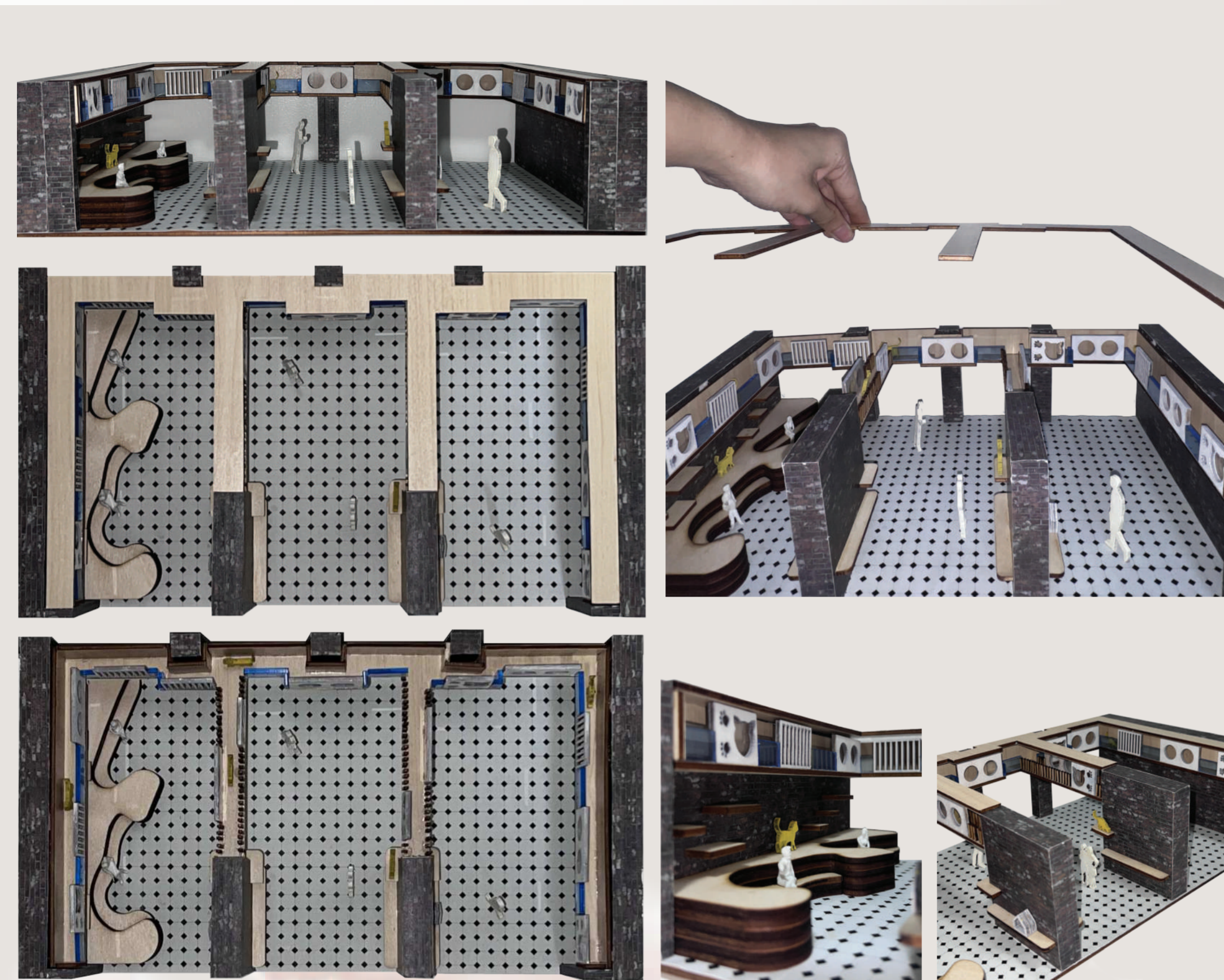
A cat shelf elevated platform or structure designed for cats to climb, rest, to observe their surroundings. The shelf is securely attached to the wall, using brackets and screws, ensuring stability and safety for the cat.



SECTION Y-Y  
NOT TO SCALE

SECTION X-X  
NOT TO SCALE

# Ceiling Cat Shelves Model

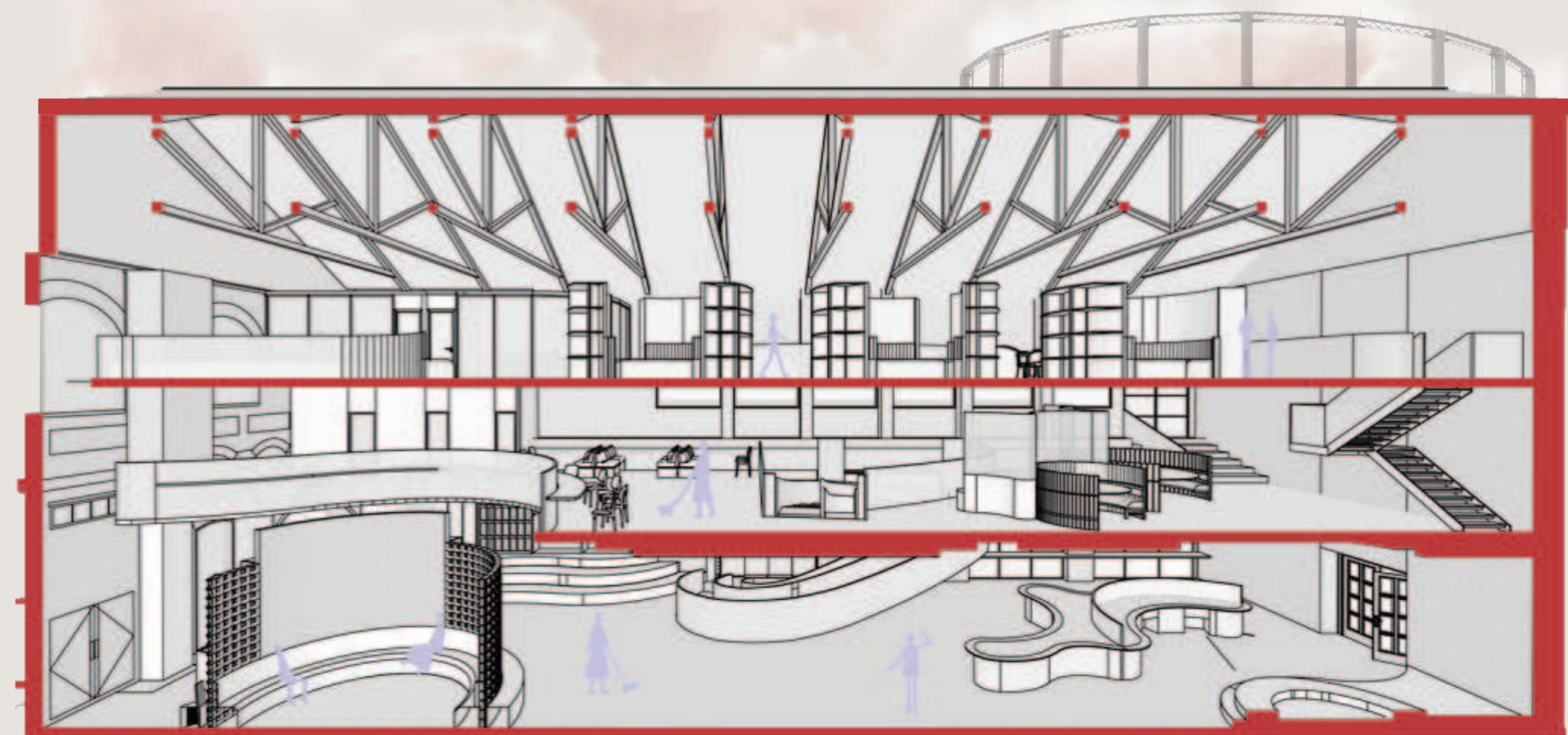


From the vantage point of the first floor, one can gaze downward into the bustling activity of the semi-coworking space below, illuminated by the cascading light pouring in through the void. This architectural feature not only creates a sense of openness and connectivity between the floors but also floods the interior with the many benefits of daylight. Daylight not only enhances the aesthetics of the space but also improves the overall well-being and productivity of its occupants. It boosts mood, reduces eyestrain, and promotes a sense of vitality, making the semi-coworking area a welcoming and inspiring place for people to work, collaborate, and thrive.

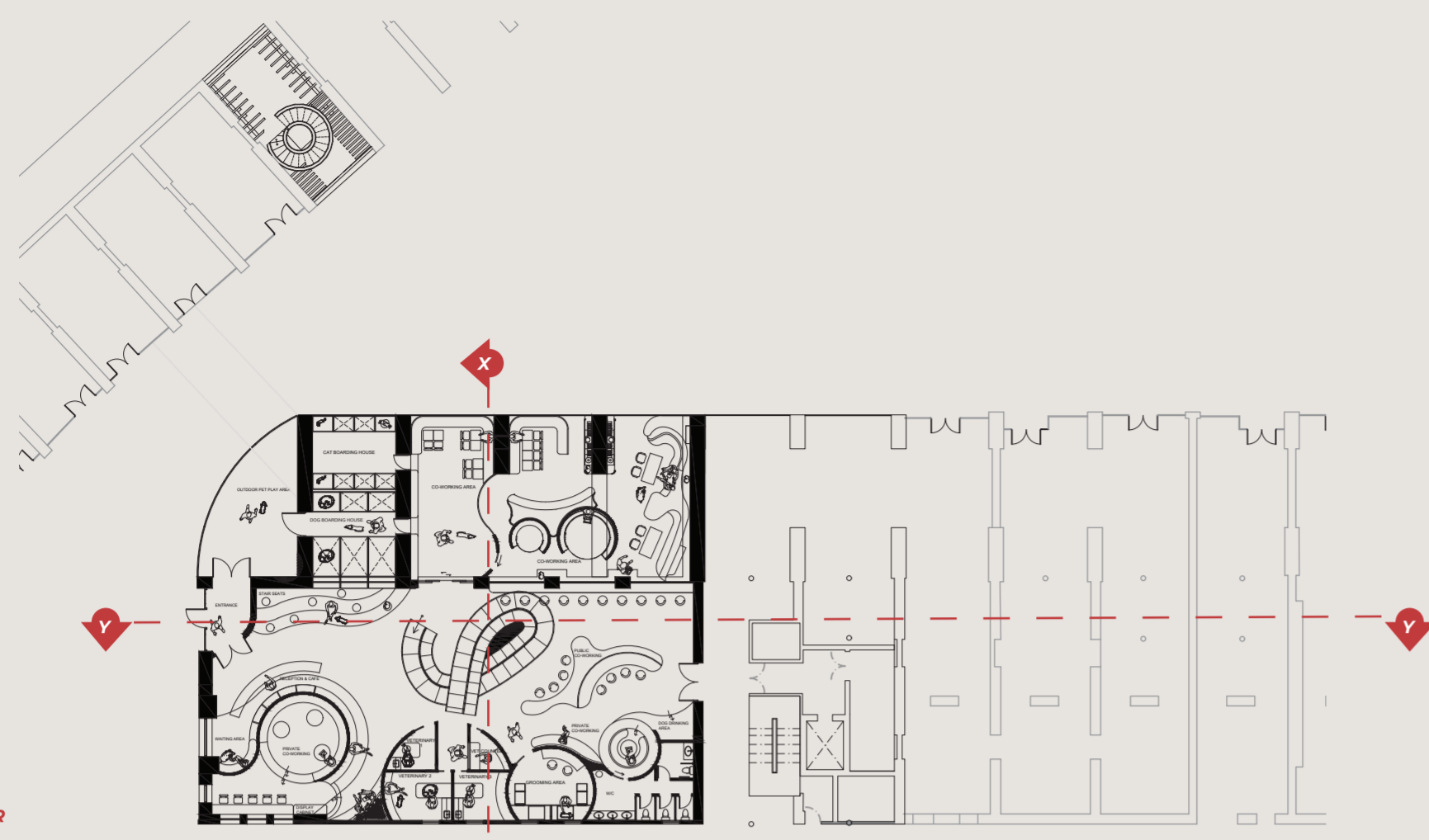
A dynamic mix of public, semi-private, and private coworking spaces are on this floor. In semi-private area, a cozy and inviting atmosphere by combining a bookshelf with a semi-enclosed circular seating arrangement. This unique design offers a perfect blend of privacy and collaboration, allowing individuals to focus on their tasks while still feeling connected to the surrounding environment. With ample storage for books and a comfortable seating area for brainstorming and meetings, semi-private coworking space is the ideal setting for productivity and creativity to flourish. This cozy setup allows humans and pets to work together freely, fostering a sense of community and companionship in the workplace.



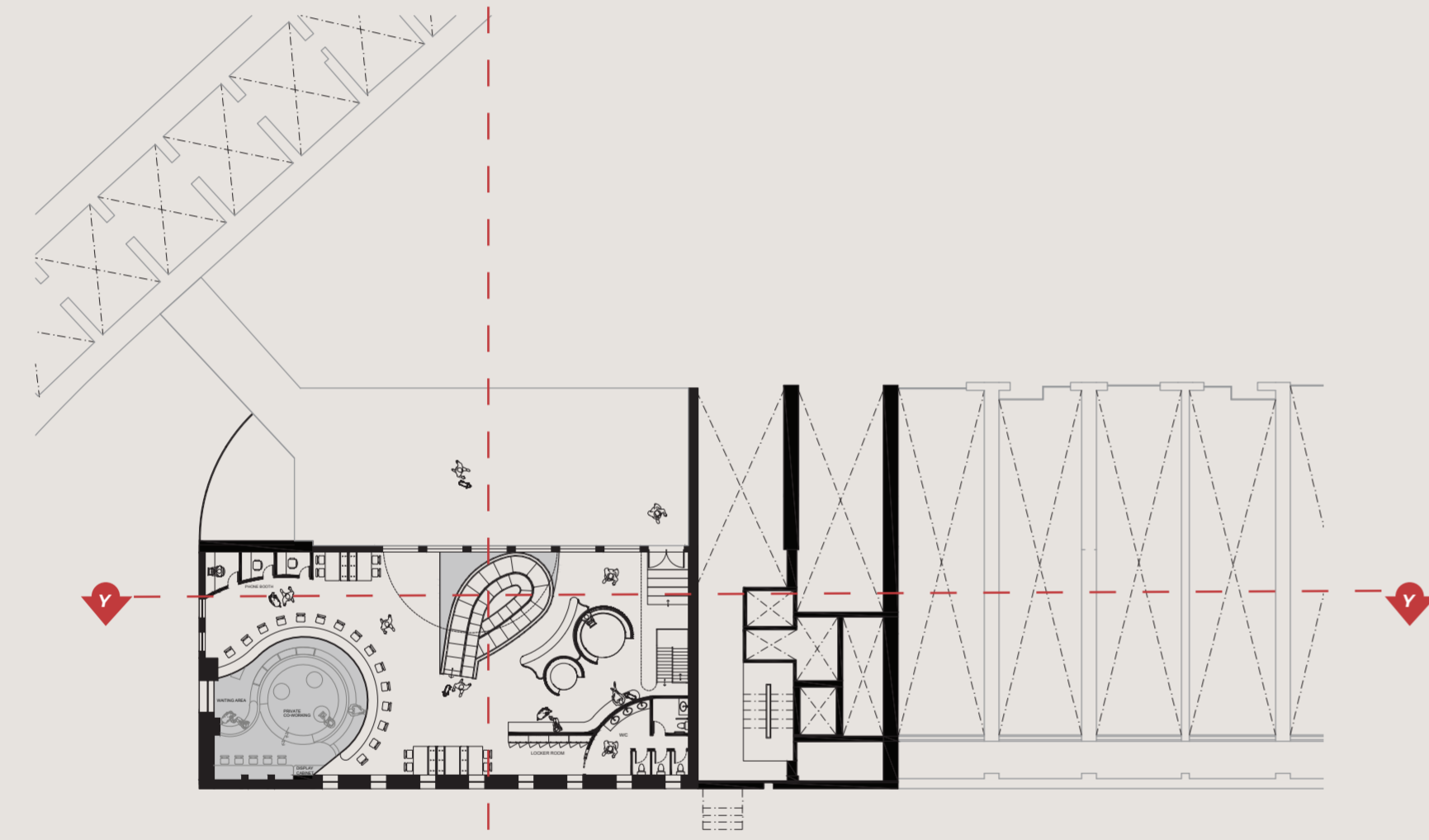
SECTION X-X  
NOT TO SCALE



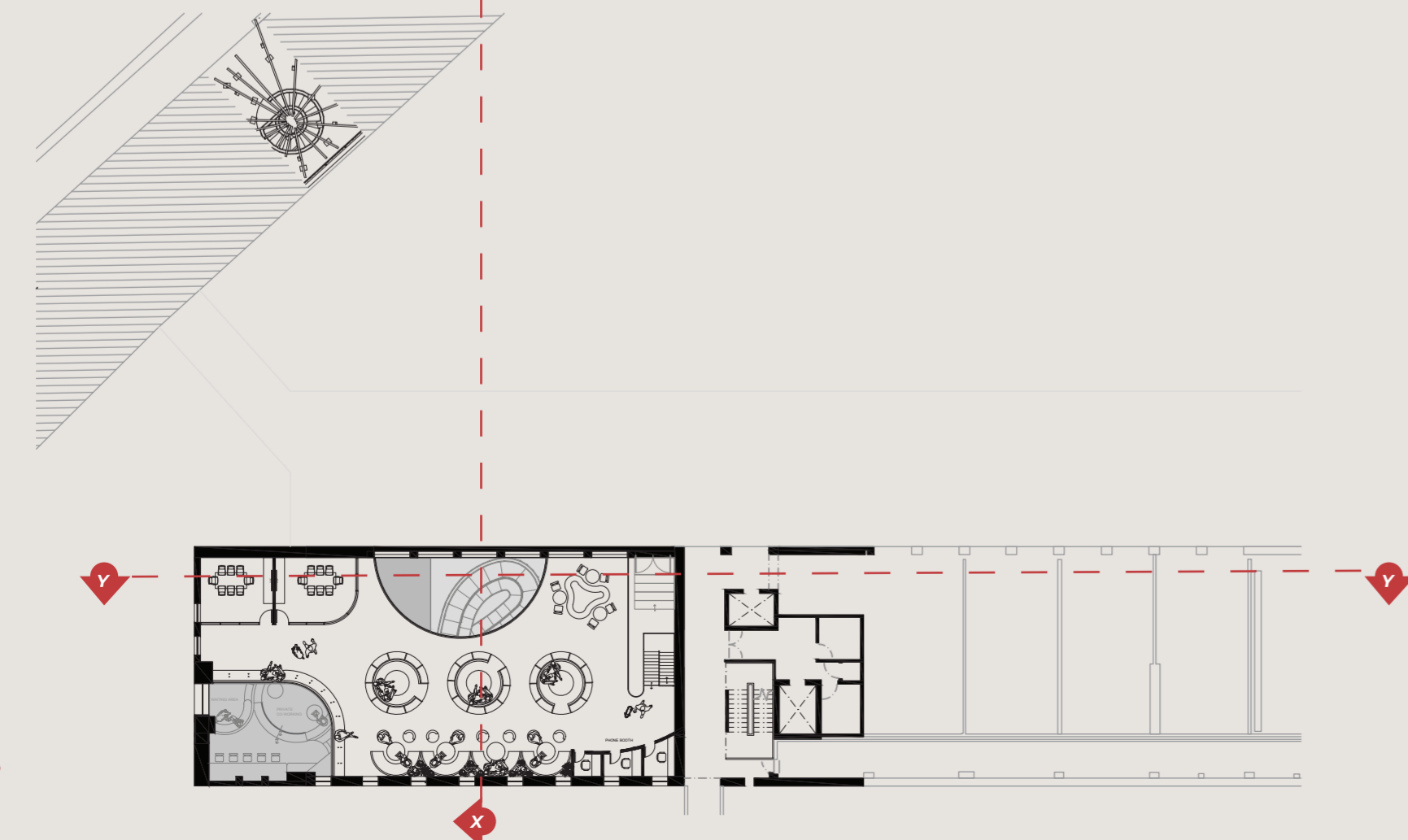
SECTION Y-Y  
NOT TO SCALE



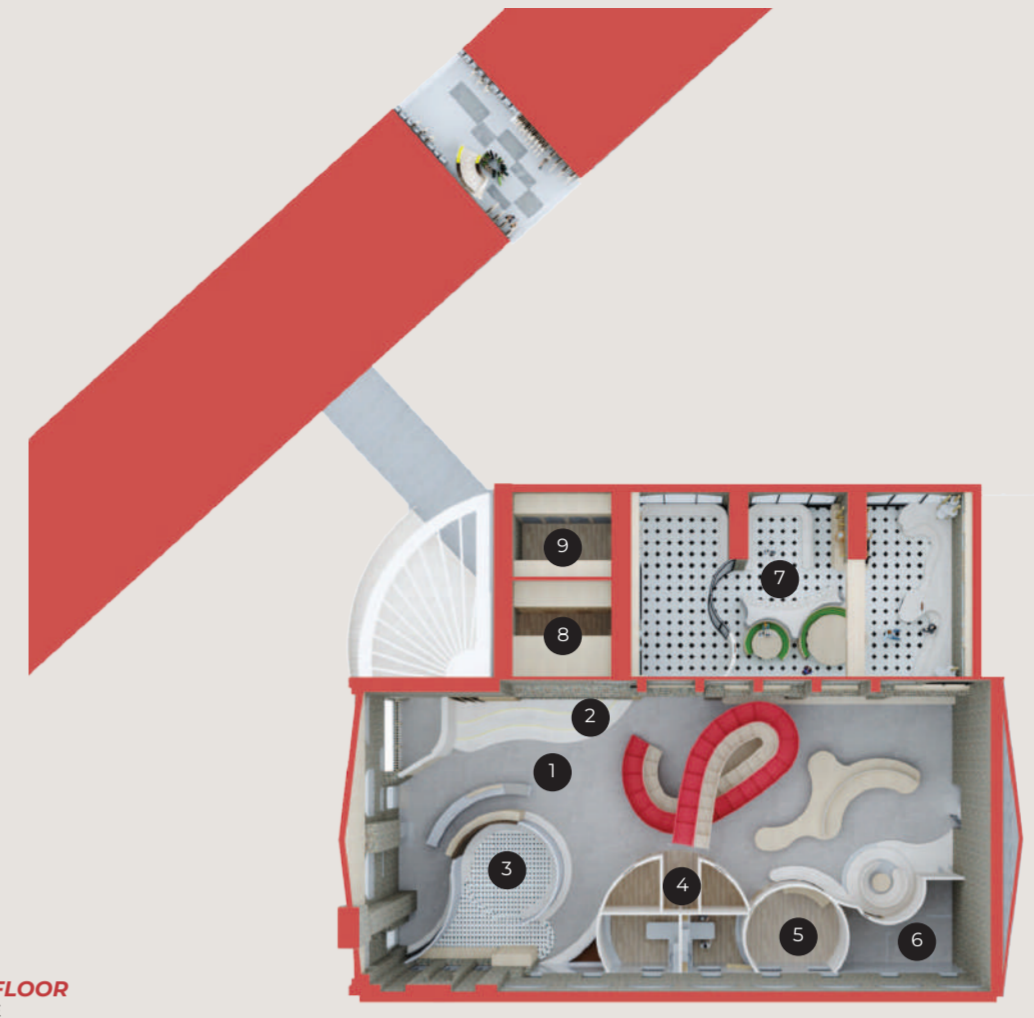
GROUND FLOOR  
NOT TO SCALE



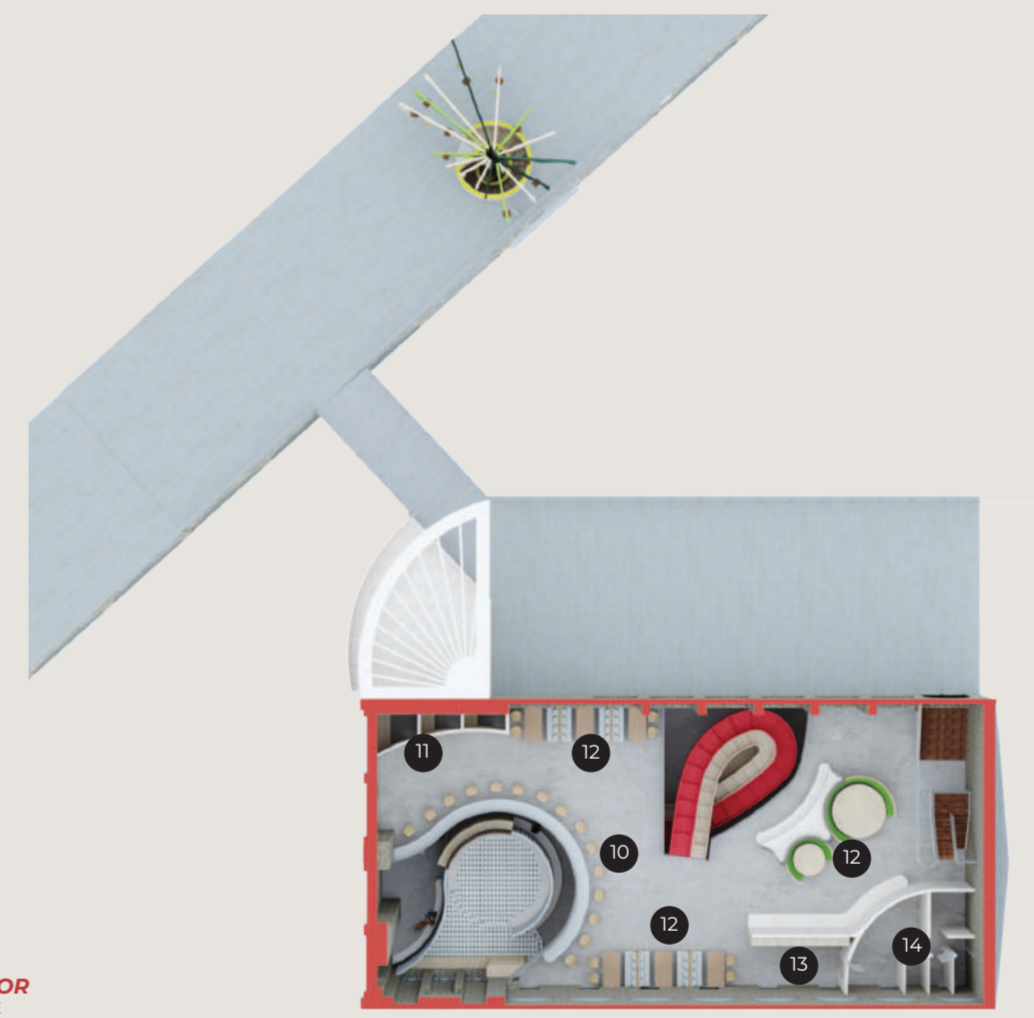
FIRST FLOOR  
NOT TO SCALE



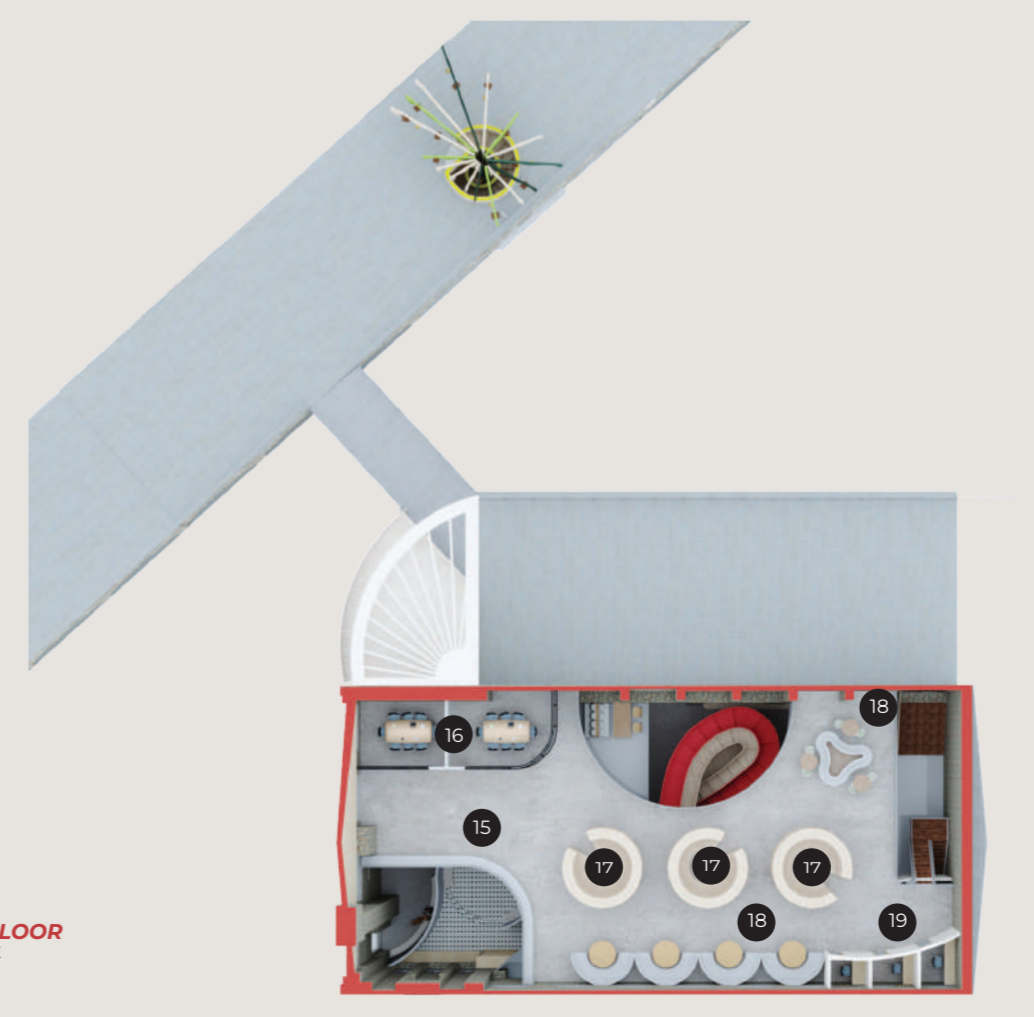
SECOND FLOOR  
NOT TO SCALE



GROUND FLOOR  
NOT TO SCALE



FIRST FLOOR  
NOT TO SCALE



SECOND FLOOR  
NOT TO SCALE

- 1 RECEPTION
- 2 CURVE SEAT AREA
- 3 SEMI COWORKING AREA
- 4 VETERINARY
- 5 GROOMING ROOM
- 6 WASHROOM
- 7 CAT COWORKING ZONE
- 8 DOG BOARDING ROOM
- 9 CAT BOARDING ROOM

- 10 VIEWING DECK
- 11 PHONE BOOTH
- 12 PUBLIC COWORKING AREA
- 13 LOCKER
- 14 WAHROOM

- 15 VIEWING DECK
- 16 CONFERENCE ROOM
- 17 SEMI COWORKING AREA
- 18 PUBLIC COWORKING AREA
- 19 PHONE BOOTH



COWORKING AREA (CAT ZONE)

The cat shelf roof provides a cozy perch for cats to observe their surroundings from above, offering a sense of security and relaxation. Meanwhile, people can't help but smile as they watch the playful antics of our furry companions. It's a wonderful fusion of work and play, where the presence of cats brings a sense of calm and happiness to the coworking space.



SEMI COWORKING AREA (VOID)

With a void between the first and second floors, natural light floods the area, creating a bright and airy ambiance that inspires productivity. Here, people can work alongside their pets, enjoying the company of their furry companions while staying focused on their tasks.



VETERINARY

In the veterinary also using warm tones and soothing atmosphere provide comfort to both pets and their owners, fostering a sense of calm throughout their visit. To ensure a clean and hygienic space, chosen sustainable and durable materials like terrazzo, which are easy to maintain and clean. With its smooth surface, terrazzo prevents pet waste from getting stuck and eliminates unpleasant odors, creating a safe and comfortable environment for furry patients.



CAT BOARDING ROOM

Step into inviting cat boarding room, where comfort meets coziness in every corner. Warm tones envelop the space, creating a welcoming atmosphere that puts both cats and their owners at ease. The use of arch shapes enhances the room's spaciousness, making it feel like a tranquil retreat for our feline guests.



CAT BOARDING ROOM

At the heart of the room stands a magnificent cat tree, inviting furry friends to climb, explore, and unwind to their heart's content. With cozy perches and hidden nooks, it's the perfect sanctuary for cats to stretch, play, and relax during their stay. Every element of the design is thoughtfully crafted to ensure our beloved feline companions feel right at home, surrounded by comfort and warmth throughout their stay.



DOG BOARDING ROOM

In the dog boarding room, a triangle shape concept brings a sense of home to both pets and their owners. The room exudes a cozy house-like feeling, ensuring dogs feel safe and secure during their stay. Connected to the outside play area, dogs have the opportunity to frolic and play freely, enjoying the fresh air and sunshine. It's a perfect blend of indoor comfort and outdoor fun, ensuring our furry friends have an unforgettable boarding experience.