

# VOICES OF HOPE

## Empowering Refugees Through Communication

**Background:** Refugees are persons who are outside their country of origin for reasons of feared persecution, conflict, generalized violence, or other circumstances that have seriously disturbed public order and, as a result, require international protection.

This project provides a platform for refugees to sell their crafts, offer workshops, and engage with the community. It helps refugees establish stable income in a new country by connecting them with people who appreciate their handmade goods and want to learn from them. Additionally, the platform allows refugees to share their stories and needs, fostering empathy and integration within the community.

The project aims to providing refugees with stable incomes upon their arrival in the UK is important, especially due to their first ability to find work in employment.

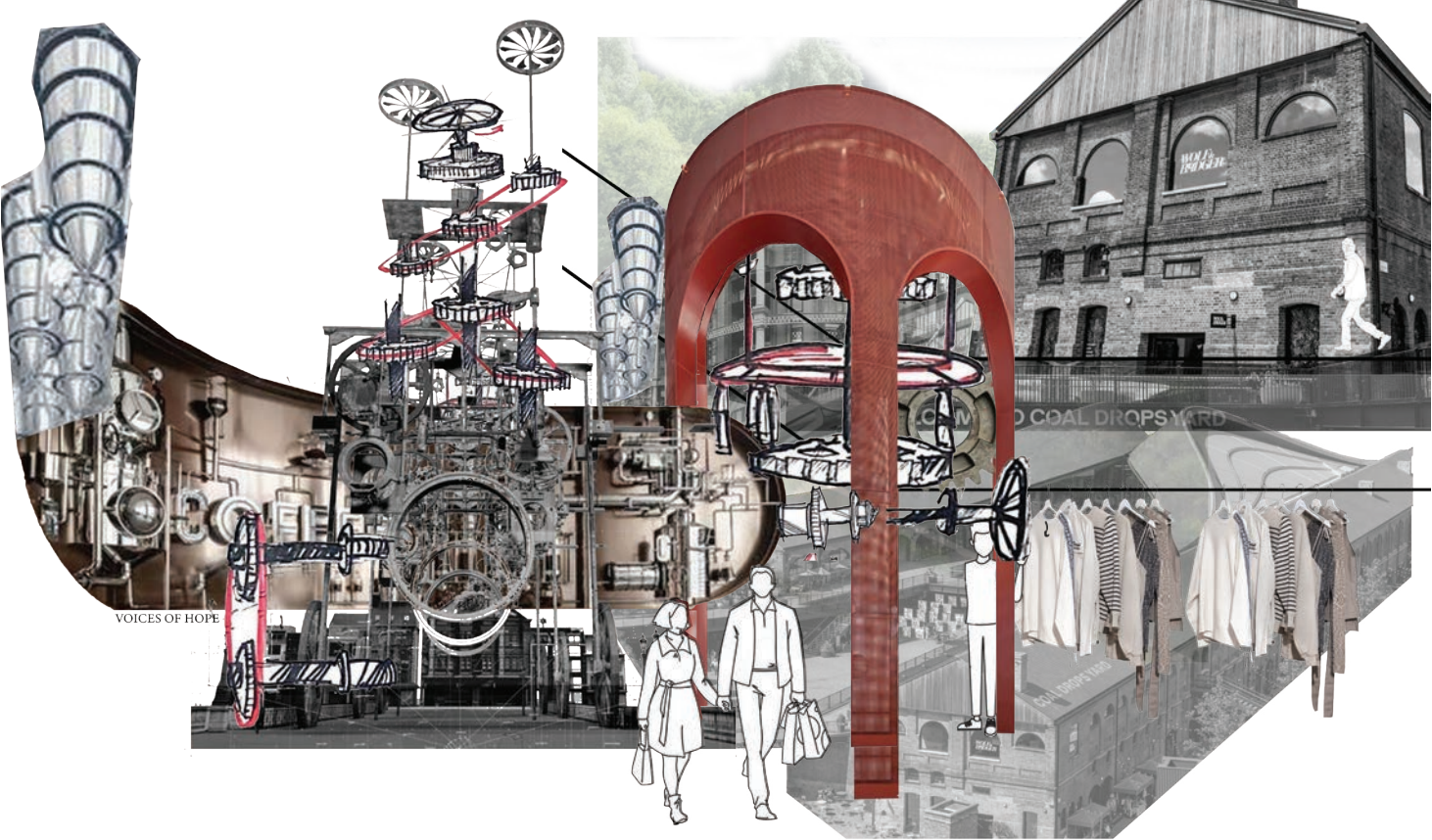
Through the offering of short-term employment opportunities, we can make sure that refugees have stability and respect as they change to their new environment. This place has a chance for a community where refugees can rebuild their lives, gain new abilities, and make important improvements to society. This method not only solves the urgent need of refugees but also helps their long-term transition into their new communities as independent people.

This proposal is inspired by the transformation of the detailed mechanics of the sewing machine into visually attractive interior components, while also combining a useful element. The machine functions as a craft shipping system, successfully enabling the transportation of handmade objects between various floors for selling. Using a more effective process, it not only promotes energy savings but also improves space usage through the building.



### Where Commerce, Community, and Canals Meet

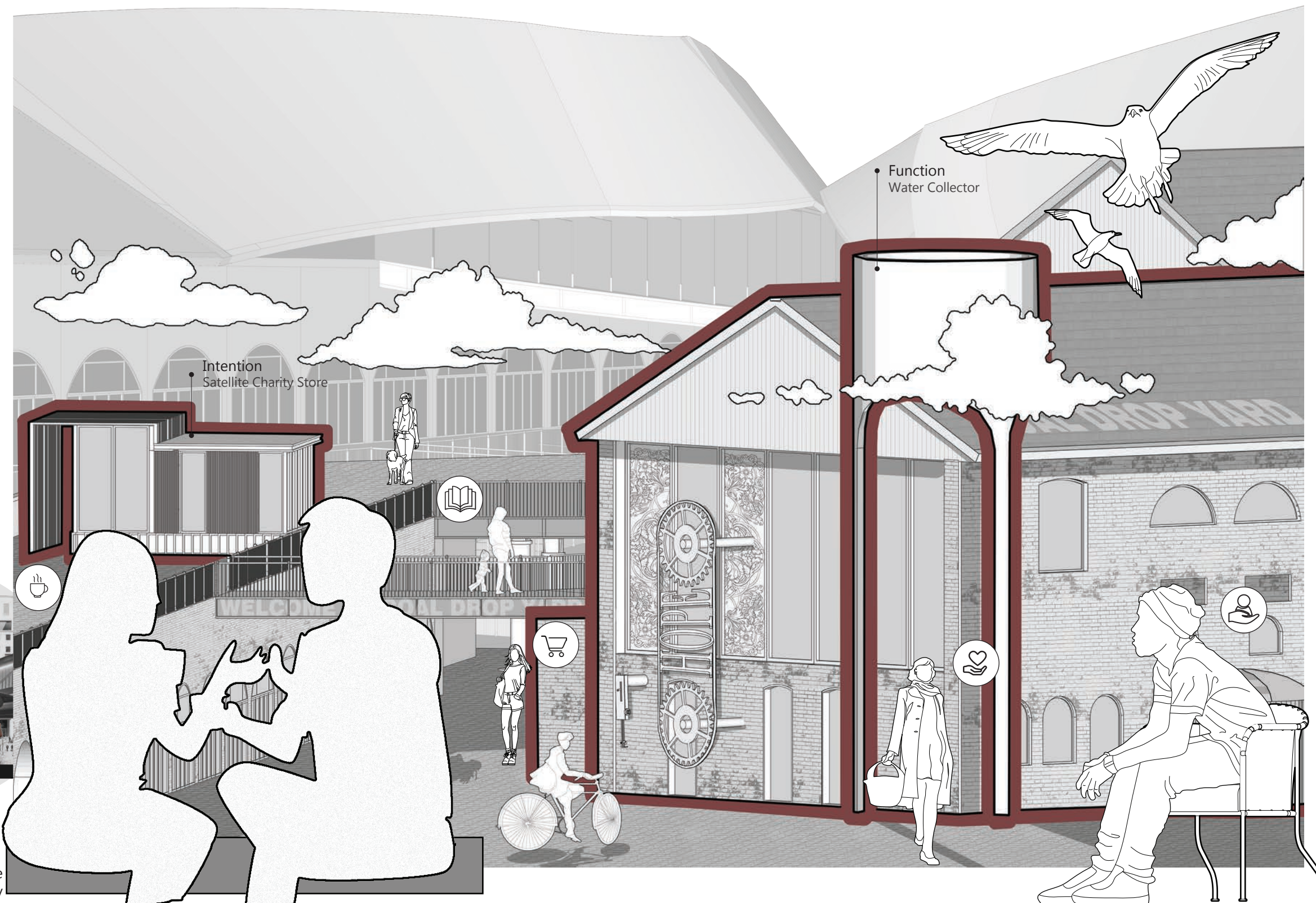
Coal Drop Yard located at Stable St, London N1C 4DQ, is surrounded by bustling stations like King's Cross Station, infusing the area with constant activity. Besides its array of shops and dining options, the site is adjacent to a lively shopping center and essential local support services. These include various centers dedicated to aiding refugees and vulnerable communities, offering vital assistance such as hot meals, education programs, and temporary shelter. Nearby, there is a canal providing scenic walks, while the surrounding communities contribute to a vibrant atmosphere, fostering collaboration and support. Coal Drop Yard emerges as a dynamic nexus where people, businesses, and nature converge, fostering inclusivity and warmth for all who visit.



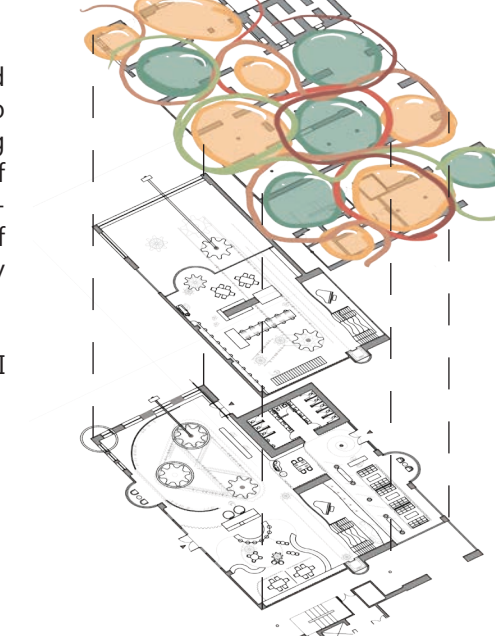
The cogwheel encourages energy saving while making it easier for refugees to develop crafts. By providing refugees with a place to work and the possibility to earn money. We can improve the relationship between refugees and the local community and promote understanding by encouraging people to buy goods made by refugees.

This is the AI Manifesto, blending AI-generated images with my sketches to craft a collage. This is to focus on utilizing machines to establish a shopping and display zone. Visitors can witness the workings of sewing machines and engage in shopping. The interior design draws inspiration from the elements of sewing machine devices. It's a space to unite society and refugees, fostering connections.

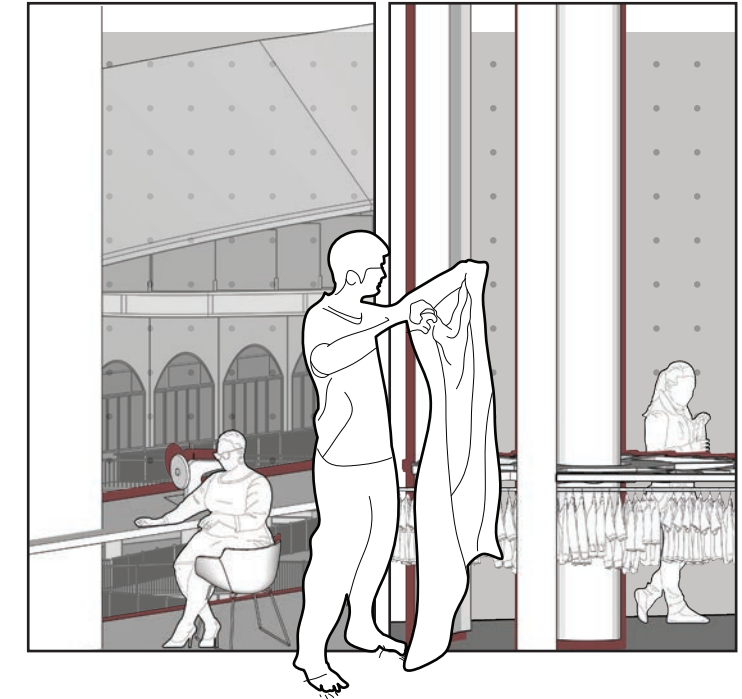
These are the keywords I had used to create the AI image:  
 prompt:  
 >workshop  
 >machine  
 >fabric  
 >sewing  
 >pattern  
 >cogwheel  
 >wheel  
 >community  
 >workload  
 >cotton  
 >architecture  
 >interior architecture



- Customers: People drinking coffee in cafe.
- Donors: People are planning to donate clothing.
- Shoppers: People just done shopping in store.
- Students: People are set to join the free language class.
- Clients: Refugees who listen to advice.



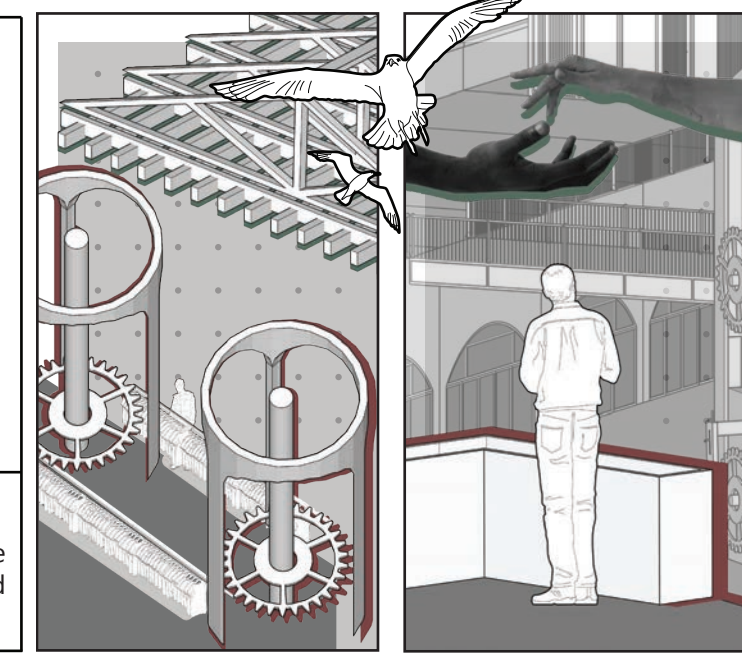
The ground floor acts as the base, followed by the first floor, with the top layer showcasing the preliminary idea sketches from the first draft. These drawings serve a variety of audiences who are looking for both public and private areas, and they represent the initial combination of these spaces.



## 02 NoPoverty

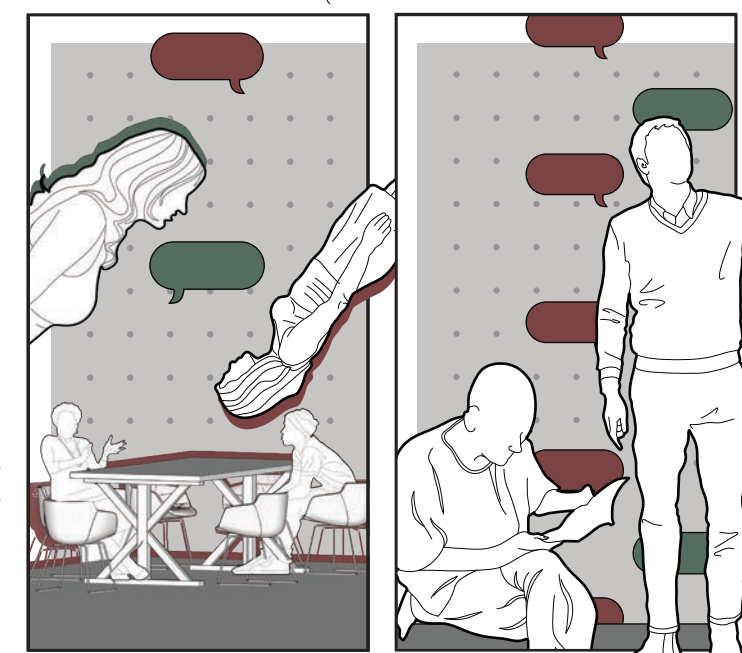
"End poverty in all its forms."  
 Helping refugees escape poverty involves supporting their businesses and skills. By providing resources and training, we empower them to start and grow businesses, gaining independence. This approach not only equips refugees with valuable skills but also allows them to create their own small businesses. Preserving their cultural traditions within these businesses adds uniqueness and fosters a sense of community.

### SDG Goals



## 01 Sustainable cities and communities

"Make cities inclusive, safe, resilient and sustainable."  
 Recycled fabric used for decoration, the shop also sells clothing made from recycled cloth or fabric donated by people. A unique feature of the delivery system is the recycle cogwheel, which not only serves a functional purpose but also showcases innovative sustainability efforts.

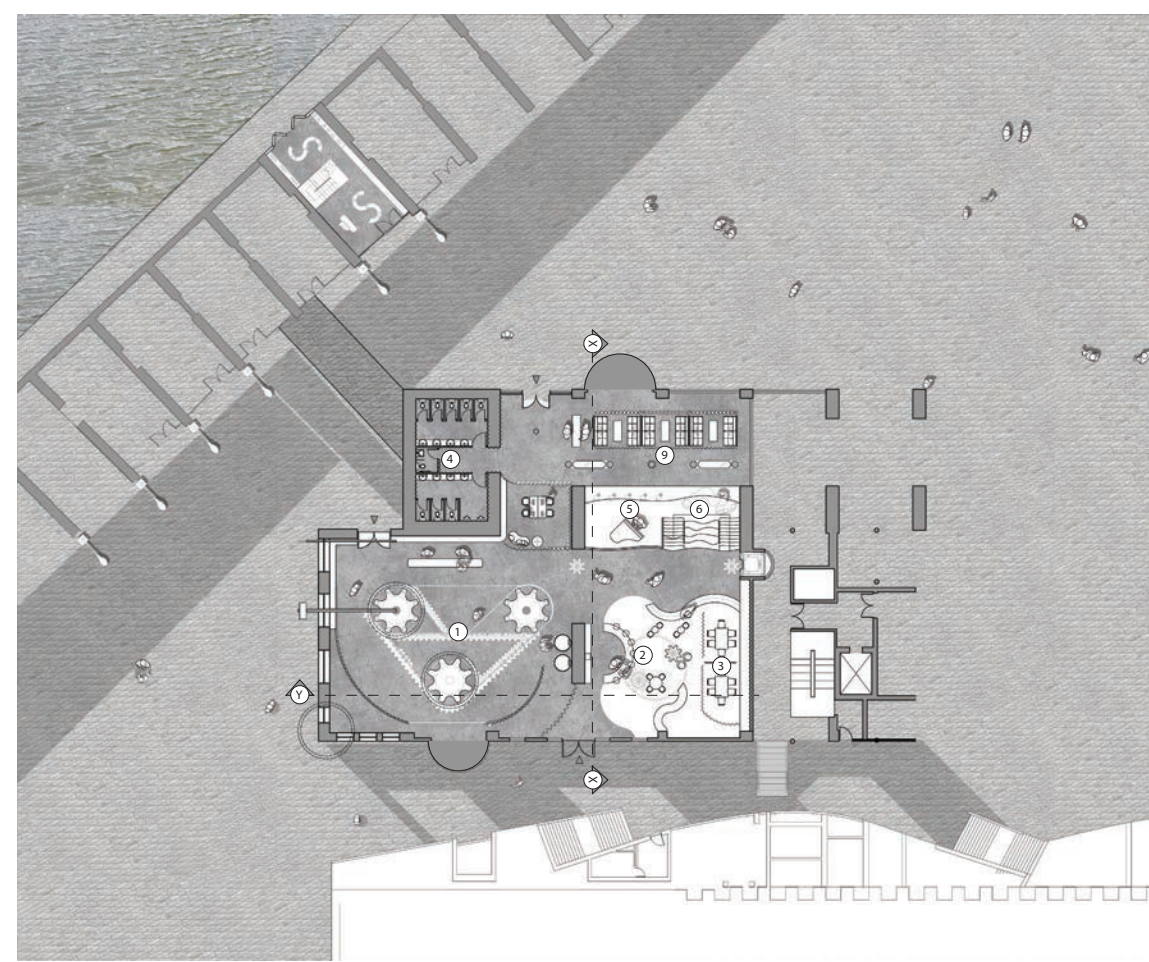


## 03 Quality Education

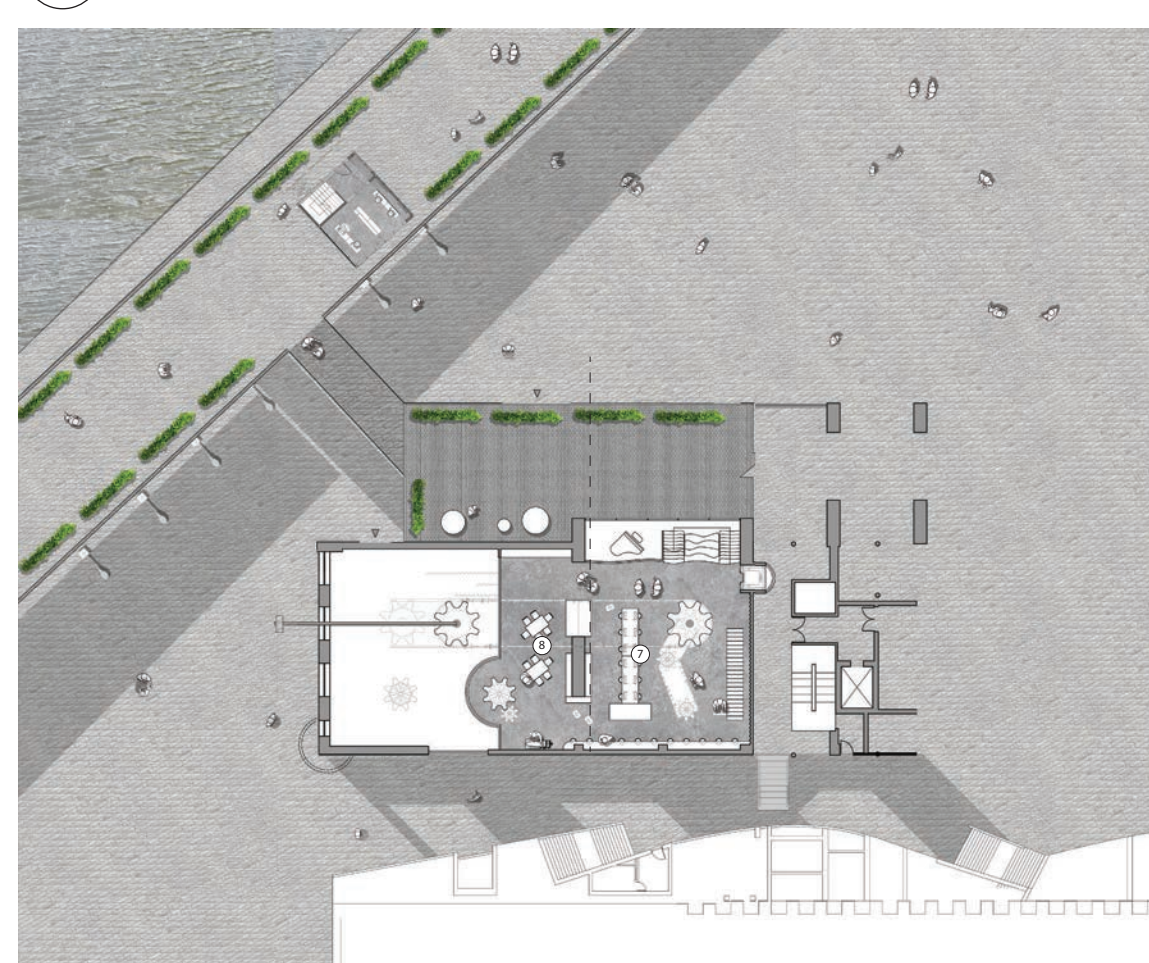
"Ensure inclusive and equitable quality education and promote lifelong learning opportunities for all."  
 Free language classes for refugees are key to steps to provide high-quality education. By teaching them the language of the area, these programmes facilitate the adjustment of refugees into their new communities and help them communicate and find work.

<b>COGWHEEL</b> The movement of the cogwheel inspired me about the motion of a display rack.	<b>PRESSER BAR</b> The presser bar's movement while holding fabric in place during sewing.	<b>FIRST INDUSTRIAL REVOLUTION</b> The turning movement	<b>PRESSER BAR LIFTER</b> The movement of it raises and lowers the presser foot.	<b>MACHINE PULLEY</b> The machine pulley helps transfer power from the motor to the moving parts.	<b>ARM SHAFT</b> The arm shaft moves the arm holding the needle and presser foot.

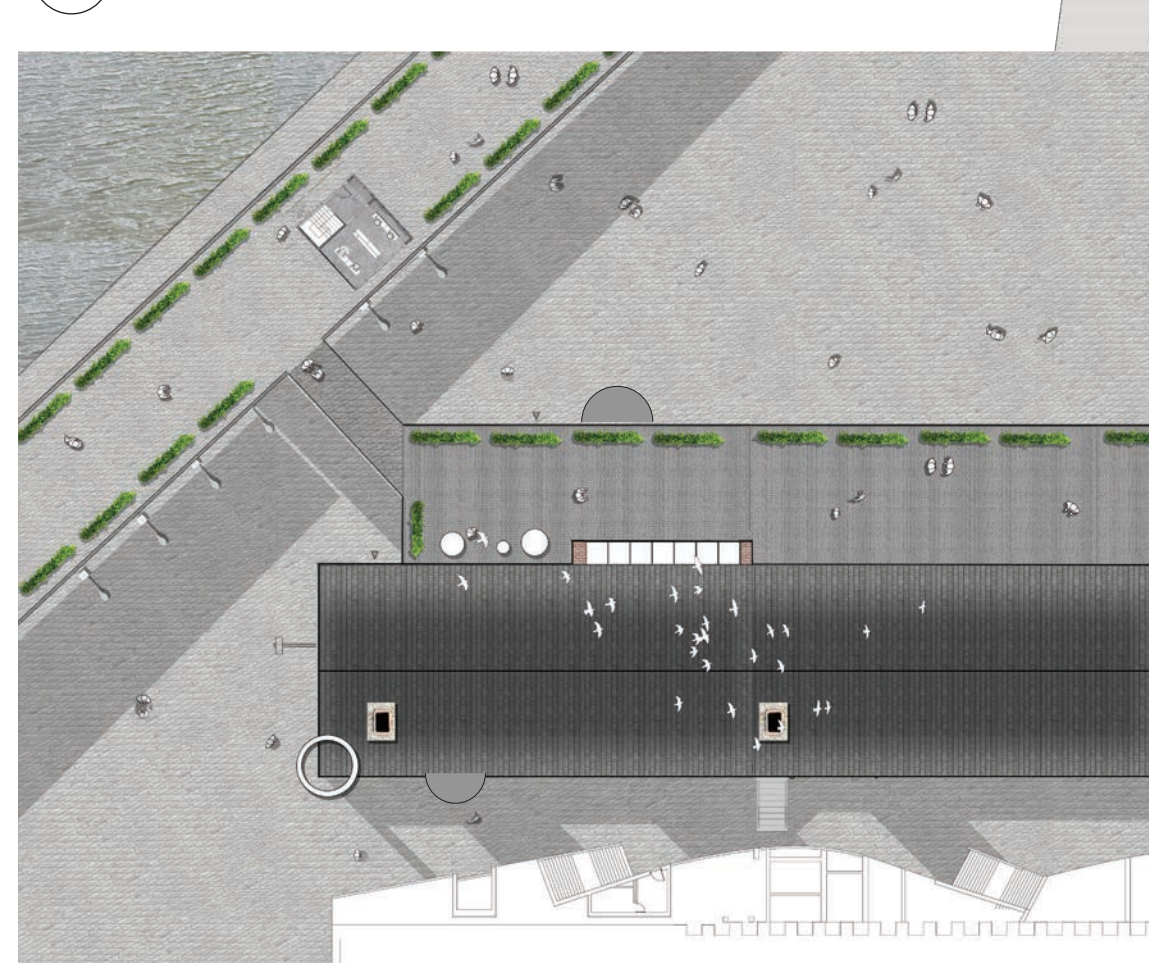




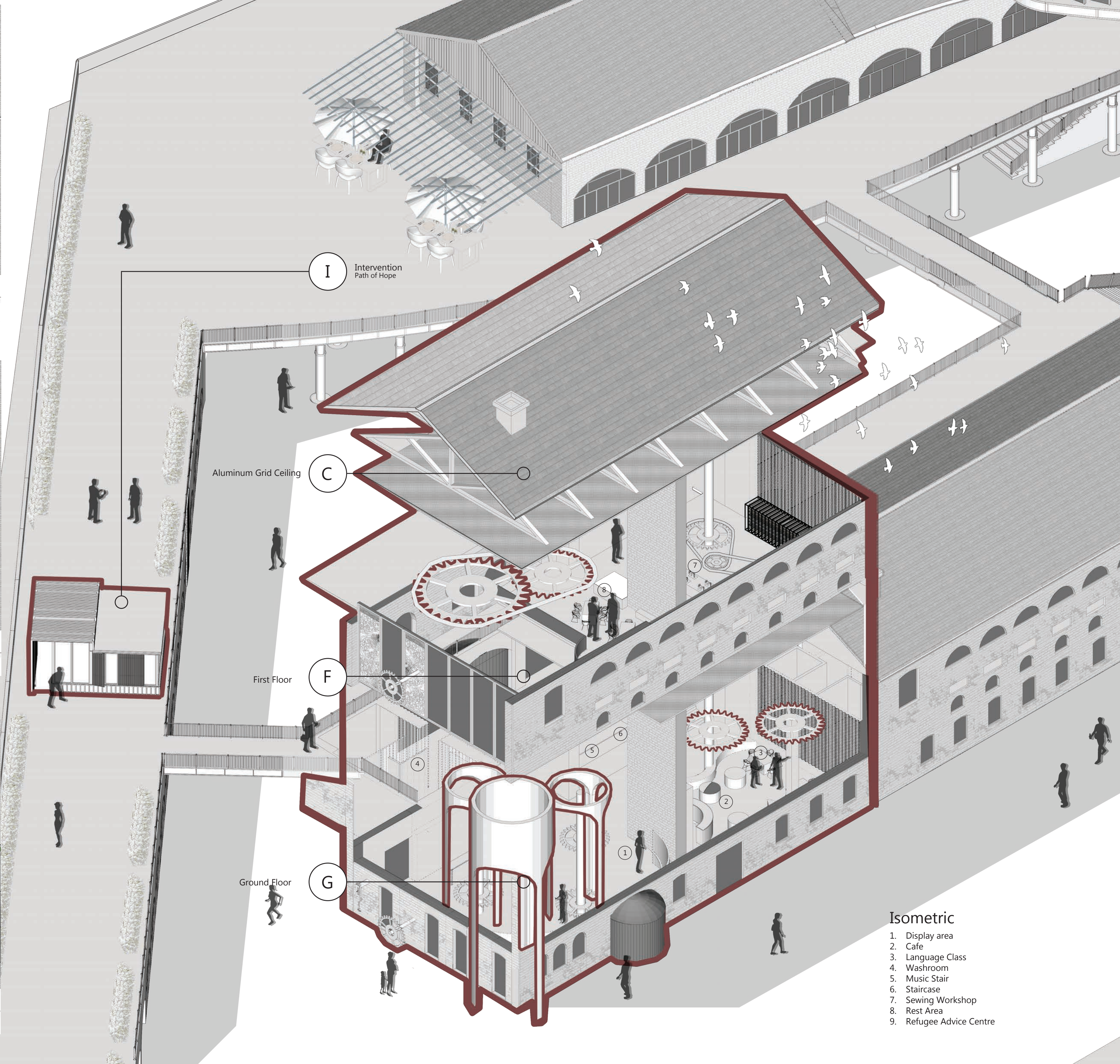
**G** Ground Floor



**F** First Floor



**R** Roof Top



**I** Intervention Path of Hope

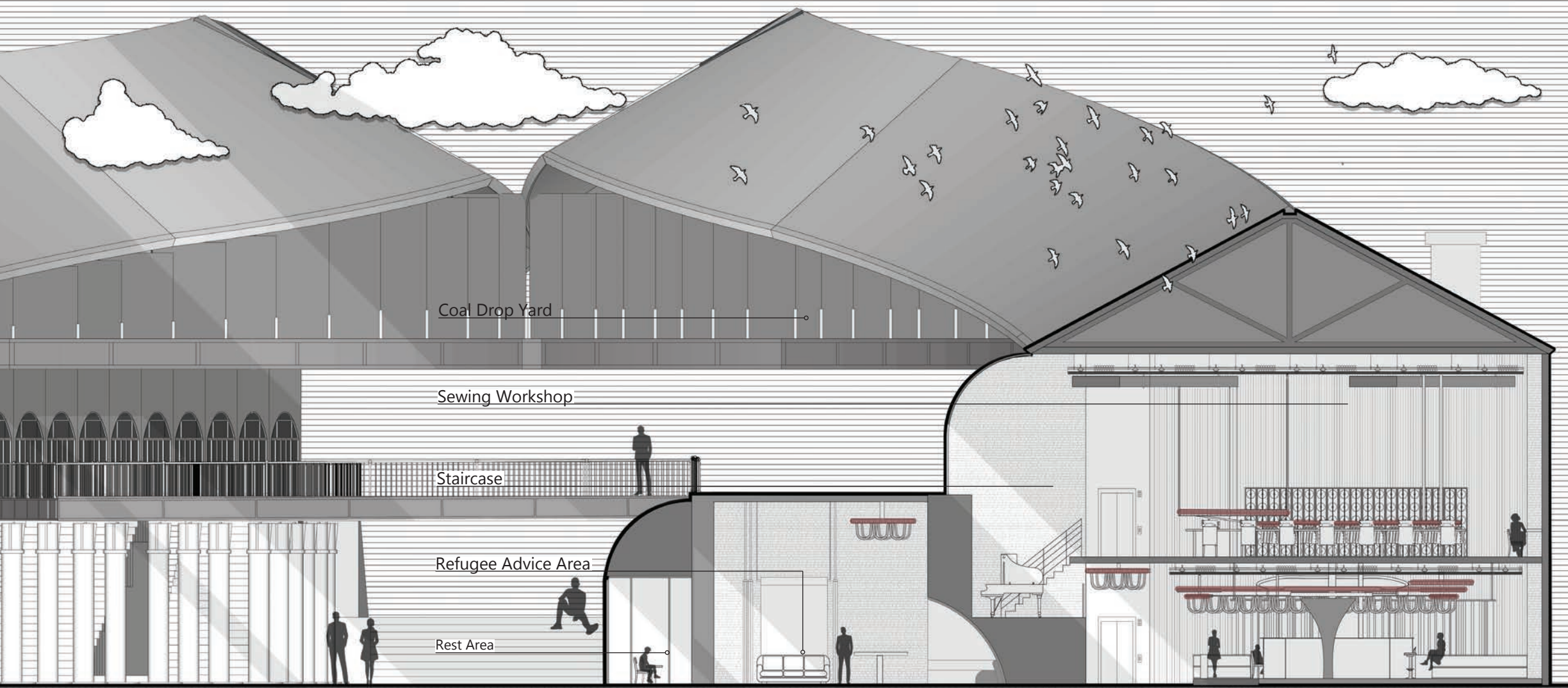
**C** Aluminum Grid Ceiling

**F** First Floor

**G** Ground Floor

- Isometric**
1. Display area
  2. Cafe
  3. Language Class
  4. Washroom
  5. Music Stair
  6. Staircase
  7. Sewing Workshop
  8. Rest Area
  9. Refugee Advice Centre





Coal Drop Yard

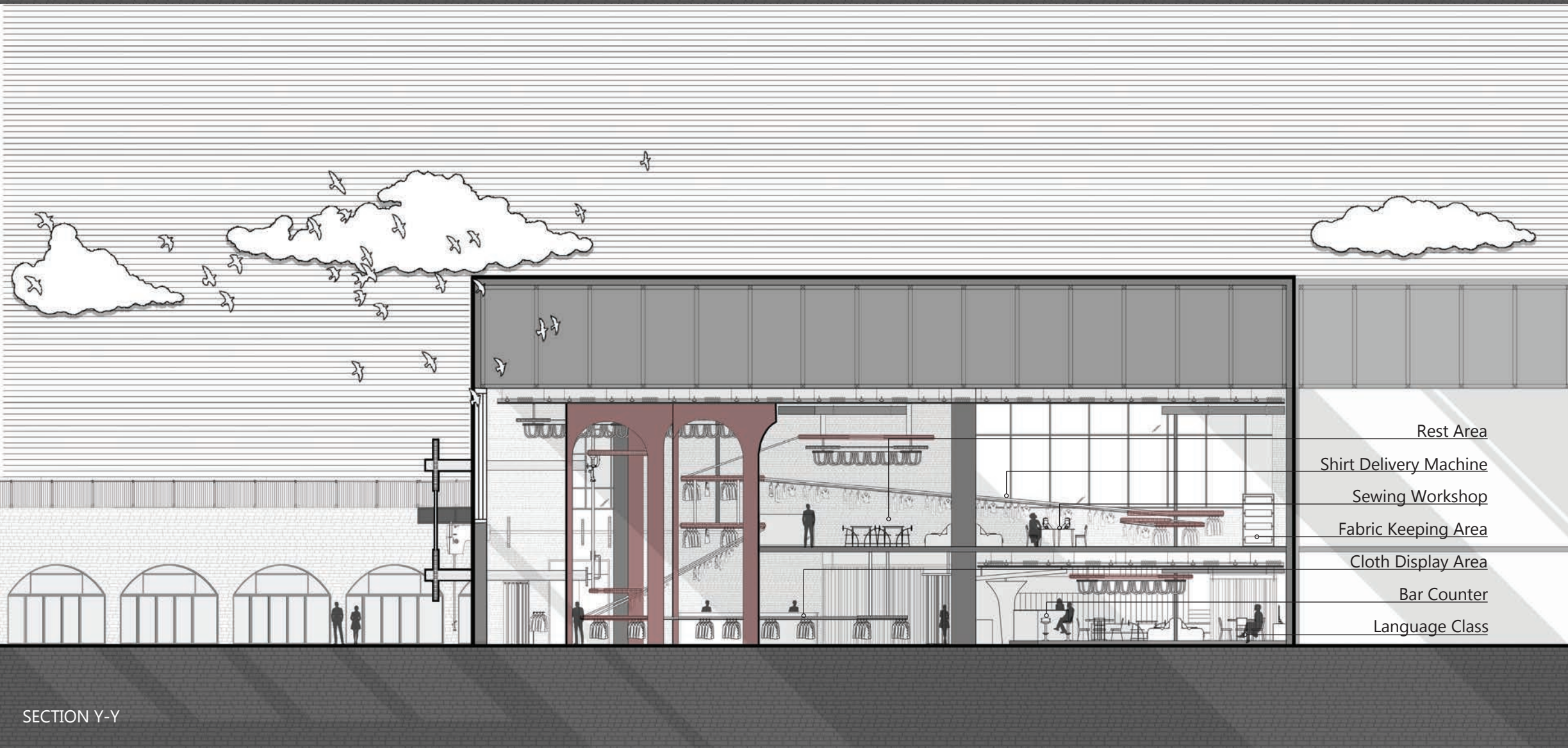
Sewing Workshop

Staircase

Refugee Advice Area

Rest Area

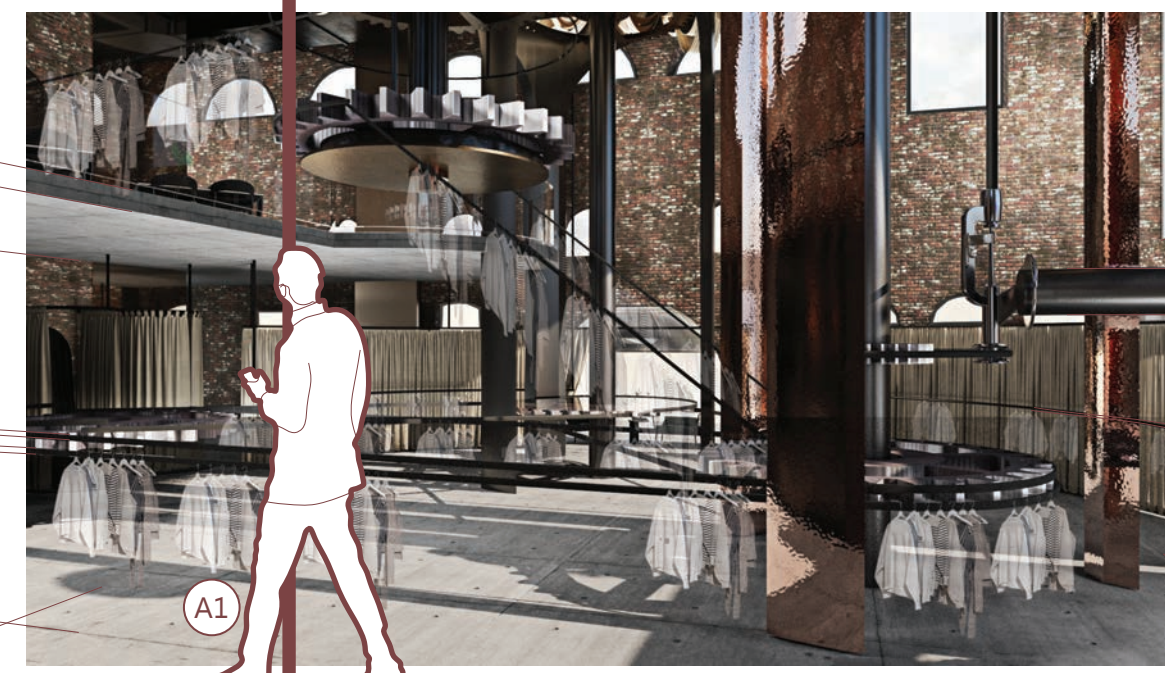
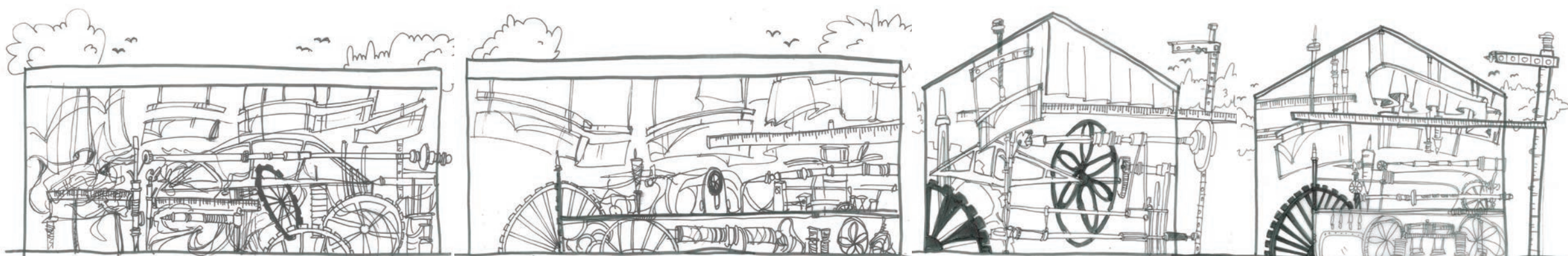
SECTION X-X



Rest Area  
 Shirt Delivery Machine  
 Sewing Workshop  
 Fabric Keeping Area  
 Cloth Display Area  
 Bar Counter  
 Language Class

SECTION Y-Y

DRAFT SKETCHES :

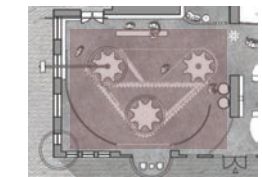


A1

**Audience**  
 The person who engaged in the building.

**A1 Visitor**  
 Dexter

Dexter is visitors who visit to learn, discover, socialize, or take part in the events, activities, or gatherings that the location they are visiting.



**Display Area**  
 Ground Floor

This is a shopping and leisure destination where people can browse and purchase. It serves as a showcase for crafts made by refugees. Additionally, there is a donation box available for those who wish to contribute.



A2

**A2 Brainstormer**  
 Peter

Peter is engaging in brainstorming sessions, seated in the designated brainstorming area.



**Staircase**  
 Ground Floor - First Floor

The staircase serves as the vital connection between the ground floor and the first floor. This architectural feature not only facilitates movement between levels but also includes a landing platform, providing a convenient space for people to rest.



A3

**A3 Customer**  
 Harry

Harry is a teenager who love to shop fashion and vintage. By purchasing these purchases, he boost the financial stability of refugee communities and the economic well-being of artisan refugees.



**Cashier**  
 Ground Floor

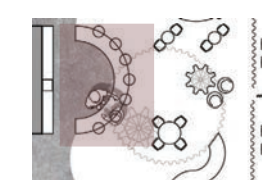
The cashier is located conveniently beside the entrance for shoppers' convenience.



A4

**A4 Café visitors**  
 Fong

Fong is seated on a book bench, relishing his time while enjoying a cup of coffee.



**Café**  
 Ground Floor

This café is designed for people to relax, enjoy a cup of coffee, and engage in casual conversation.





**System**  
The cogwheel system is designed to transport cloth and fabric from the ground floor to the first floor. Additionally, it is used to deliver handmade crafts created by refugees, ensuring that their products are moved smoothly between the floors. This system supports both the material needs and the creative output of the community.

**Ceiling**  
The ceiling design features hanging fabric, showcasing refugee-made crafts, and is part of the delivery system for these goods.

**Activities**  
A refugee, who is seeking inspiration for crafting, is spending time in the creative space. This area is designed to spark creativity and provide a tranquil environment where new ideas can flourish.

**Structure**  
There are various metal structures in the building, each serving as a beam and also representing a refuge for refugees.

**Device**  
This delivery device delivers shirts made by refugees from the first floor to the ground floor, saving human effort, and also serves as a display area.

**Material**  
Copper had been selected as the structural material. Its durability and resistance to corrosion make it an ideal choice for ensuring the longevity and reliability of the structure.

**Activities**  
Customers are viewing and purchasing crafts made by refugees. This not only supports the refugees' income but also helps them improve their living conditions. By buying these handmade items, customers contribute directly to the well-being and economic stability of the refugee community.

**Ceiling Viewpoint**  
The ceiling design of building.

**Activities**  
A refugee who needs a break from sewing activities is resting in the designated area. This resting area offers a comfortable environment where they can relax and recuperate before returning to their work.

**First Floor**  
This floor is the first level of the building, which is the sewing workshop.

**Eye Level**  
The view from this perspective aligns with a person's eye level. This is the ground floor of the building.



**Client**  
The refugees who participating in the building.

**C1 Ms. Sherif**

Ms. Sherif, a Syrian refugee, finds purpose and sustenance by teaching in the workshop, sharing her expertise in sewing and crafts with eager learners, while also earning vital income to support herself and her family in their new homeland.



The sewing workshop is equipped for refugees to craft and for students to come and learn.



**C2 Ms. Daffine**

Ms. Daffine is taking a break in the rest area, brainstorming new design ideas and discussing them with her friends.



The rest area is designated for individuals needing a break to rest during their sewing activities.



**C3 Mr. Ryan**

Mr. Ryan, a refugee who fled his homeland in Afghanistan due to conflict, now finds himself seeking guidance and support at the advice center.



The Refugee Advice Centre provides information and assistance to refugees who are new to the country and may be unsure of what to do or where to seek help. It offers a private area where they can receive support in a secure environment.



**C4 Mr. Ali**

Mr. Ali, a refugee and former teacher in his home country, now dedicates himself to teaching language classes to students keen on learning a new language.

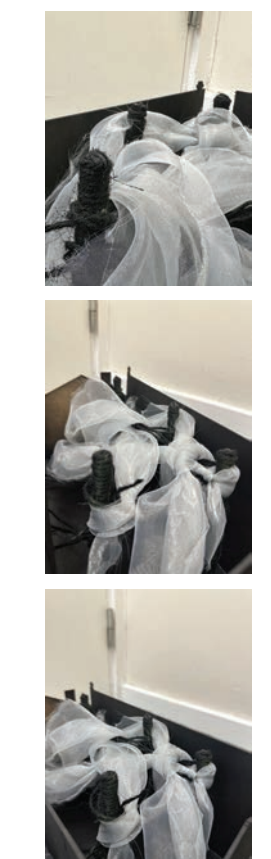


A language class for refugees serves as a platform for them to either learn a new language or teach their own language to others.

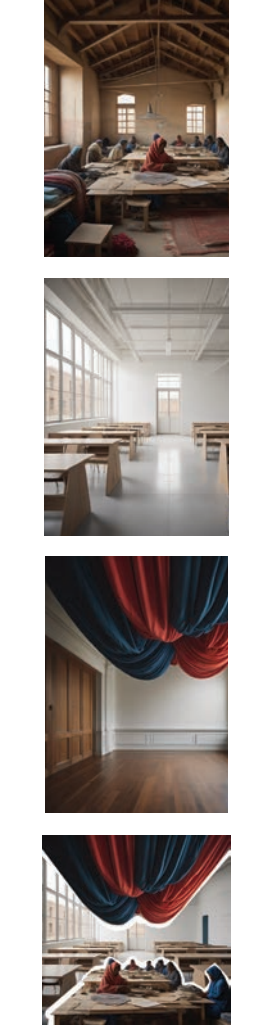
DRAFT SKETCHES :



MAQUETTE DESIGN :

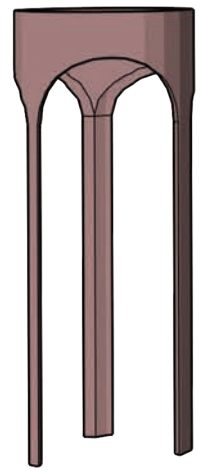


AI FIRST DRAFT :



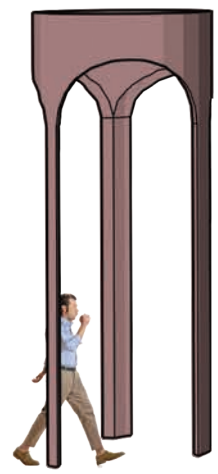


STRUCTURE & DEVICE



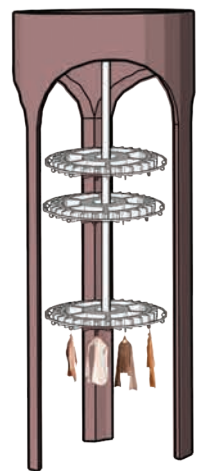
What to be?

The architectural concept of this structure is influenced by the notion of places of refuge. Its design aims to create a welcoming and secure environment for all who enter.



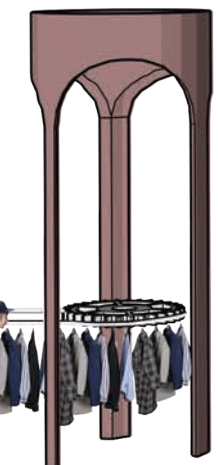
As a support structure

This structure serves as the backbone of the building, constructed from various metal alloys carefully selected for their strength, durability, and resilience.



As a delivery device

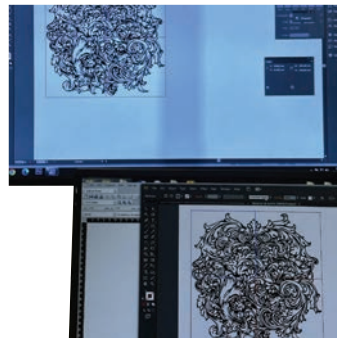
Functioning as a delivery device, it reduces the need for manual labor, thereby conserving human effort and energy. By making transportation more efficient, it helps people deliver items quicker and with less physical effort.



As a display

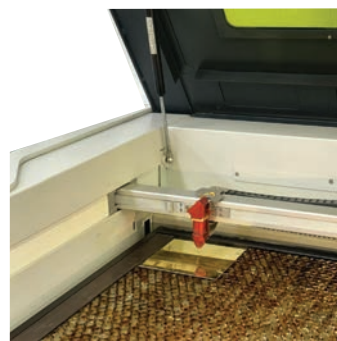
Functioning as a display, it showcases the shirts meticulously crafted by refugees. Shirts crafted by refugee artisans are carefully displayed for customers to appreciate the craftsmanship and unique designs.

1:1 SAMPLE MODEL



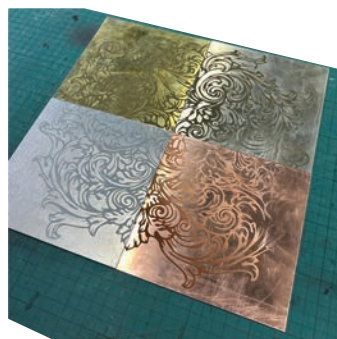
Step 1 : Draw the pattern to be engraved.

Software:  
Adobe Illustrator



Step 2 : Place the metal into the laser cut machine.

Machine:  
Laser Cutter



Step 3 : The picture showcases metal pieces that have been engraved.

Material:  
Copper  
Brass

Aluminum  
Silver



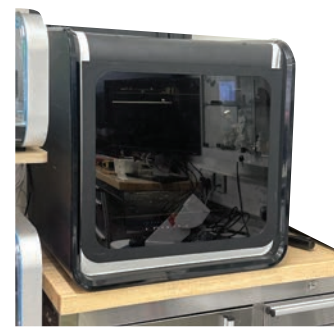
Step 4 : The last step is to stick the engraved metal onto the board.

Material:  
12mm Thickness MDF Board  
Spray Paint

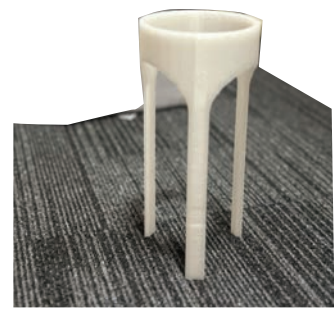
Detail :



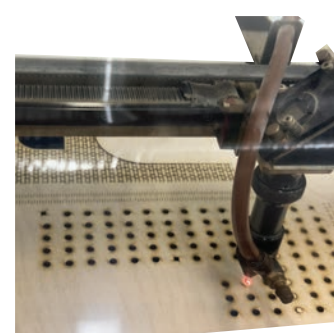
1:50 SAMPLE MODEL



Step 1 : The structure is printed using a 3D printer, layer by layer, based on a



Step 2 : The structure is printed and stabilized by a 3D printer.



Step 3 : Building components are precisely cut using a laser cutter.



Step 4 : The plywood pieces are glued together to create the building facade.



Step 5 : The outcome is a completed building facade, from the glued-together plywood pieces.



Step 6 : This is the completed model, representing the final outcome of the model.



Façade Design 1



Façade Design 2