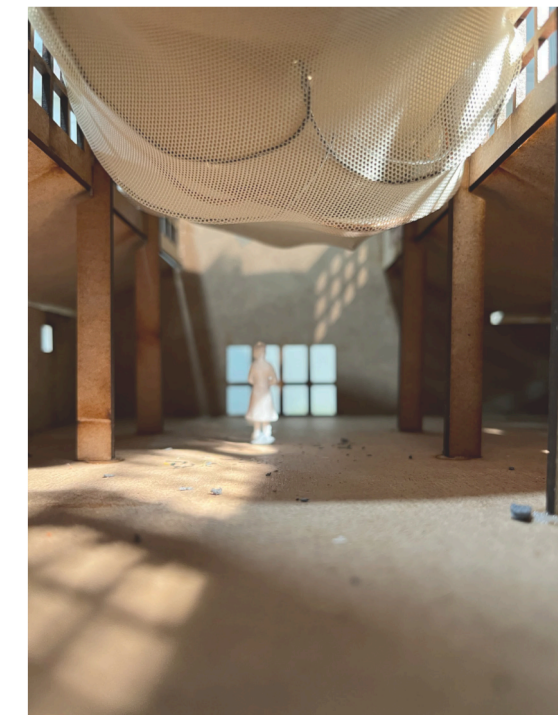


Childs Hill Library

320 CRICKLEWOOD LN,
LONDON NW2 2QE



Equity for all - Designing for Autism

CREATING A CALMING SPACE FOR INDIVIDUALS WITH AUTISM

The purpose of this design is to [promote inclusivity](#) for those with [neurodiversity](#). I empathize with the community's need for ['support in learning and managing disabilities in the borough of Barnet'](#). The existing library is highlighting the importance of this project and believes that engaging individuals in various workshops will benefit the entire community.

Based on my research and comprehension of the topic, it is clear that there is a [need for the interiors industry to take on more projects that support disability/learning spaces](#). I have come across various discussions highlighting the steps that need to be taken in this regard.

[I felt a deep emotional connection to this project due to personal connections](#) who have a disability. I was fortunate to be able to ask them questions and test my designs with them, which provided valuable input throughout the development process. This contributed greatly to the success of my design.

Statement of intent

A sensory library and workshop designed for children and young adults with autism. Additionally, offering a workspace for practitioners in a year-long residency.

Childs Hill Library - Designing for inclusivity for the neurodiverse

Portland stone



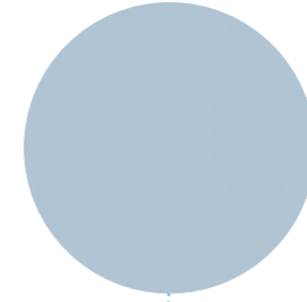
Lime hemp plaster



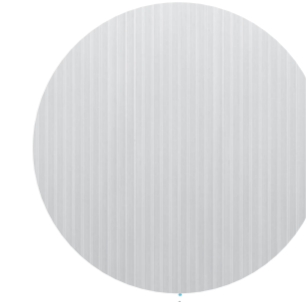
Light oak wood



Upholstery sky blue



Polycarbonate sheets



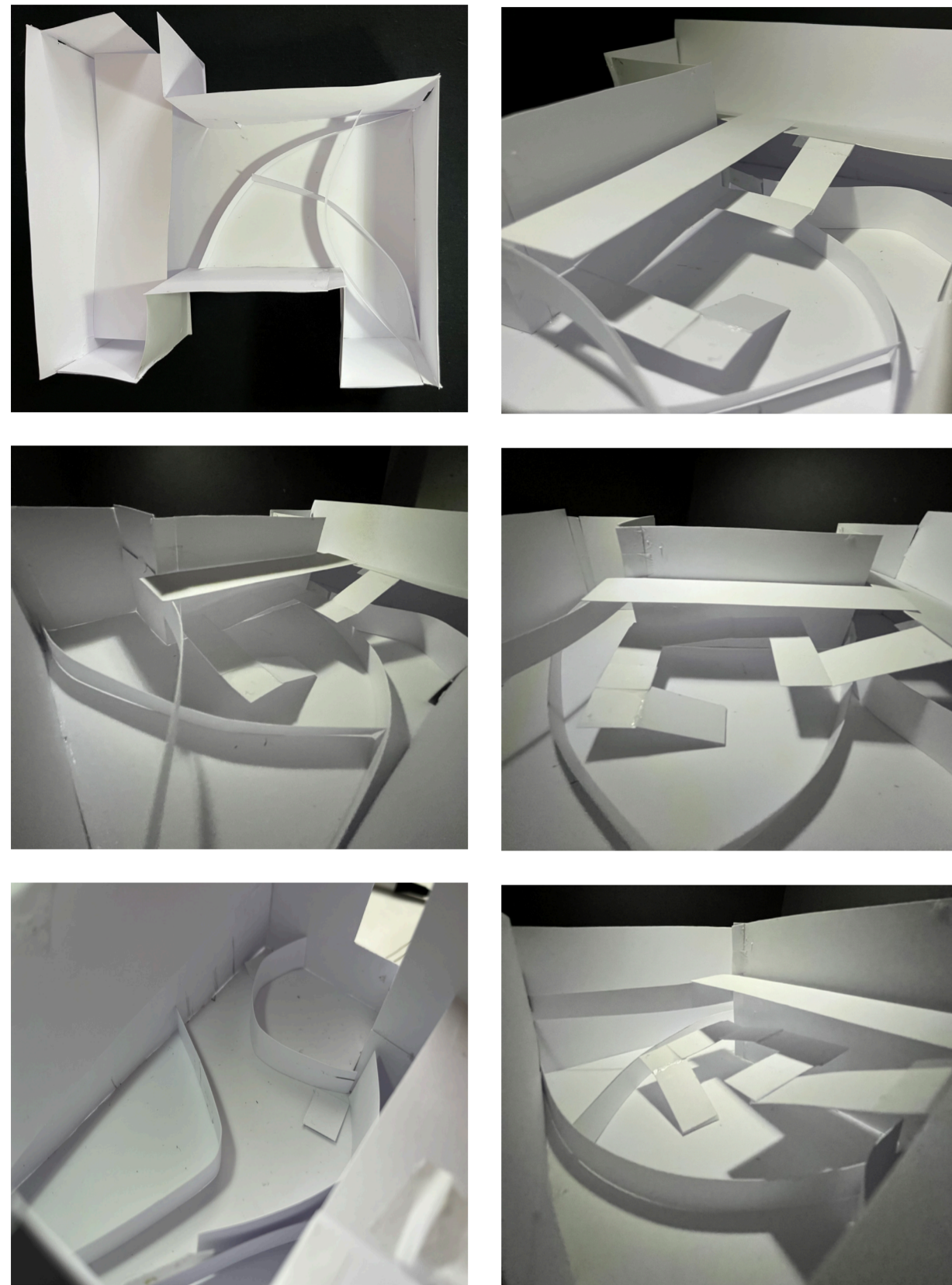
Grey warm metal cladding



Rendered Section DD



Design Development



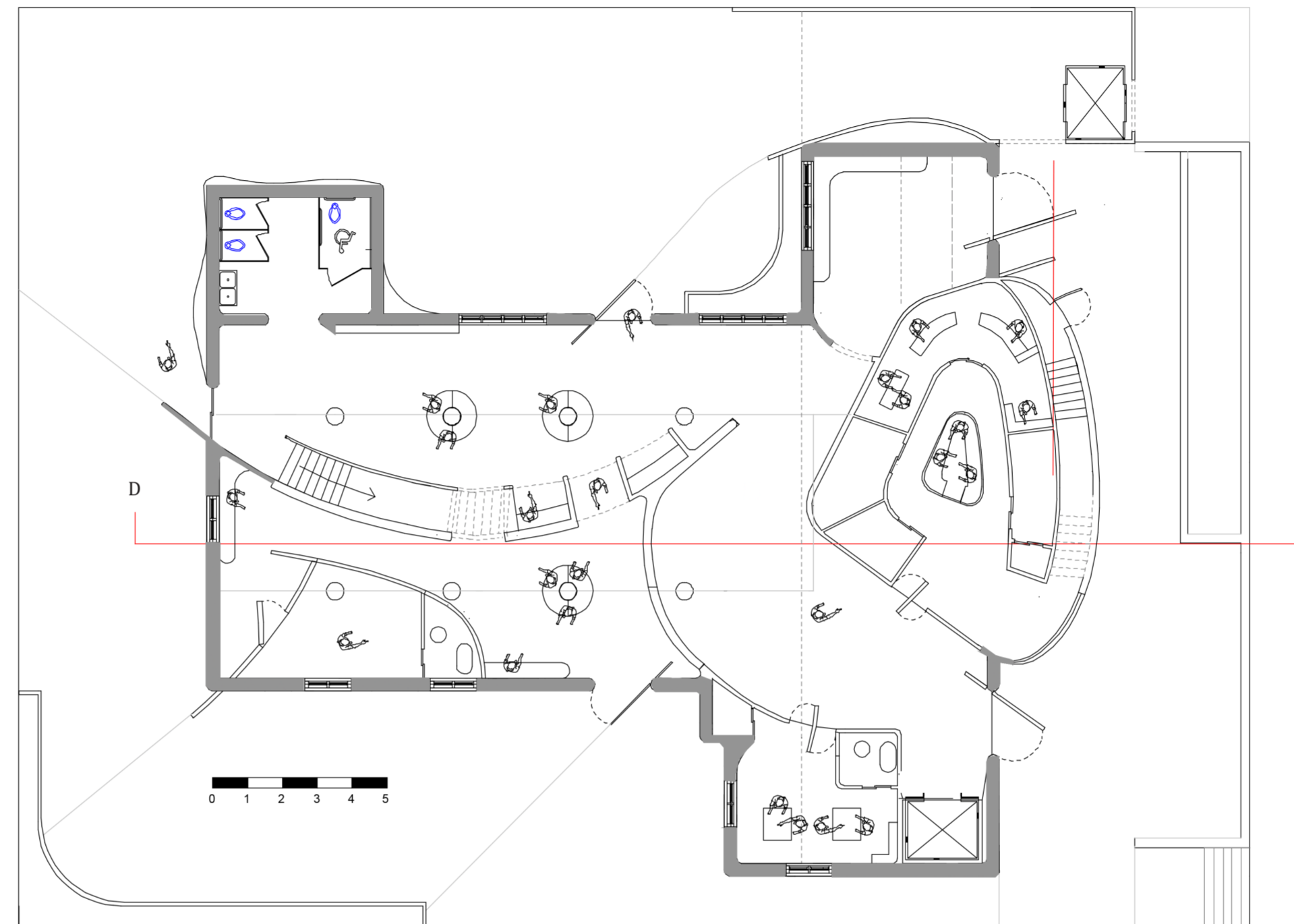
I utilized a paper model to experiment with the arrangement of spaces. Through the manipulation of each piece of paper and its placement within the model, I could visually observe its transformation into the structure. By intently listening to the model, I was able to explore the possibilities of positive and negative space, and documented each iteration through photography to capture the essence and potential of the site. This process assisted me in conceptualizing my ideas and effectively translating them into sketches of plans and sections.

Extending

Volumes

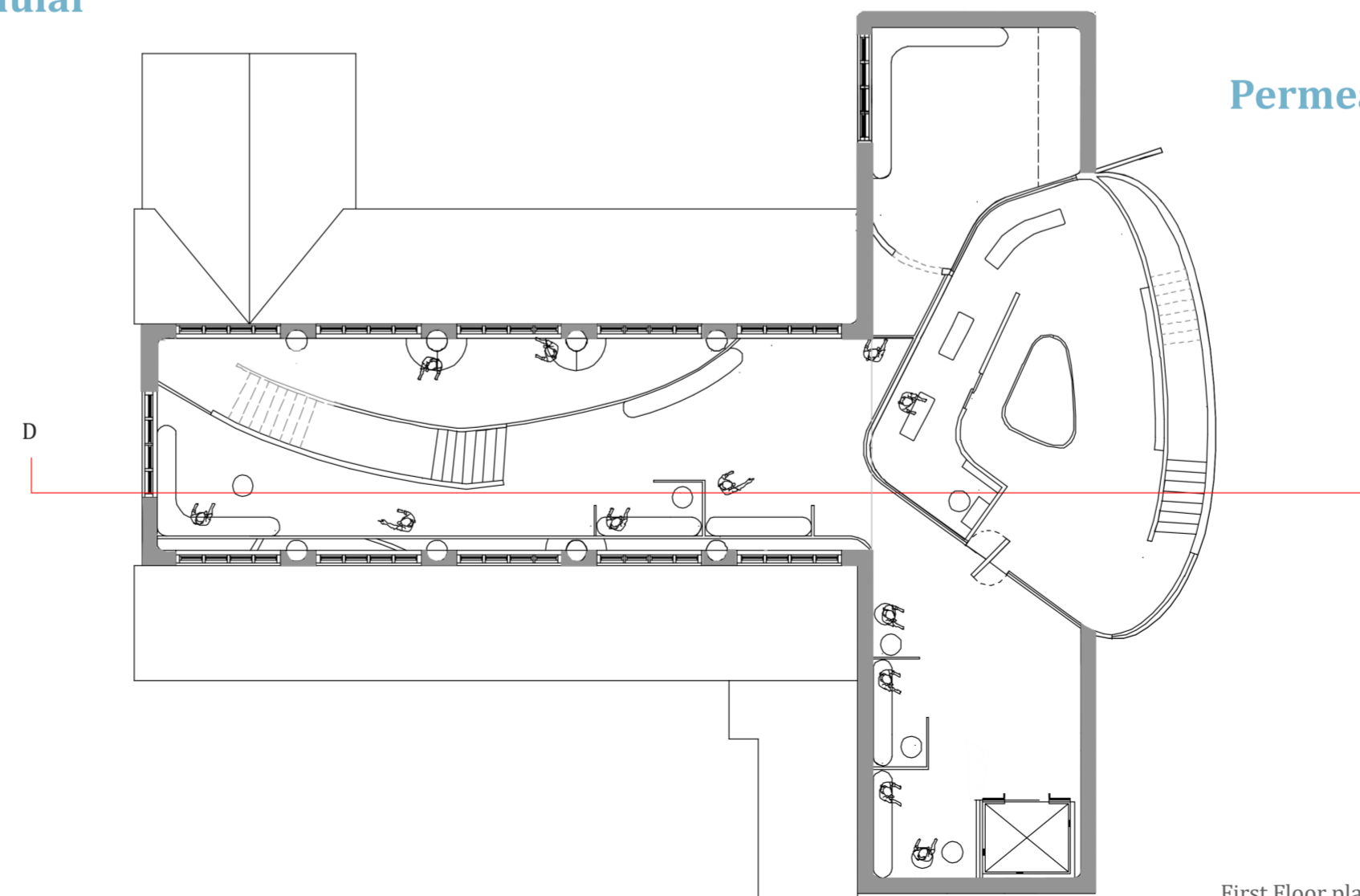
Cushioned

Sanctuary



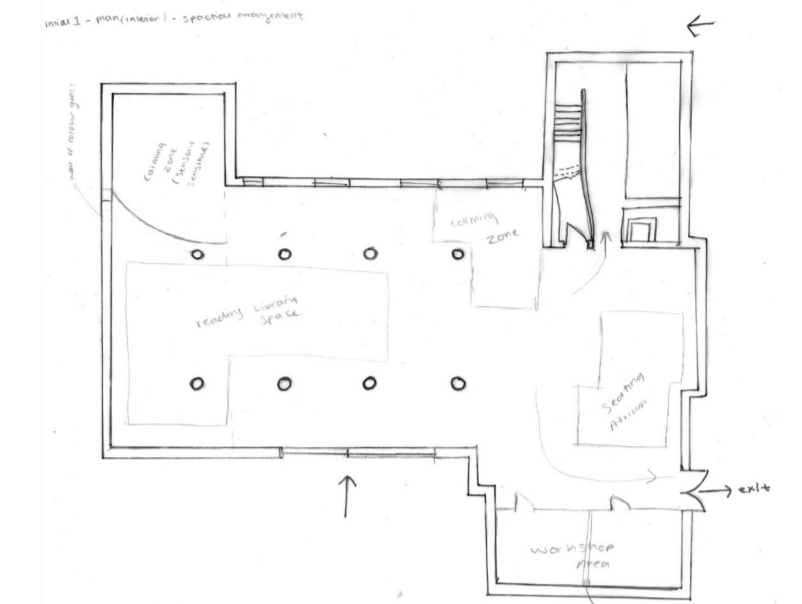
Ground Floor plan

Cellular



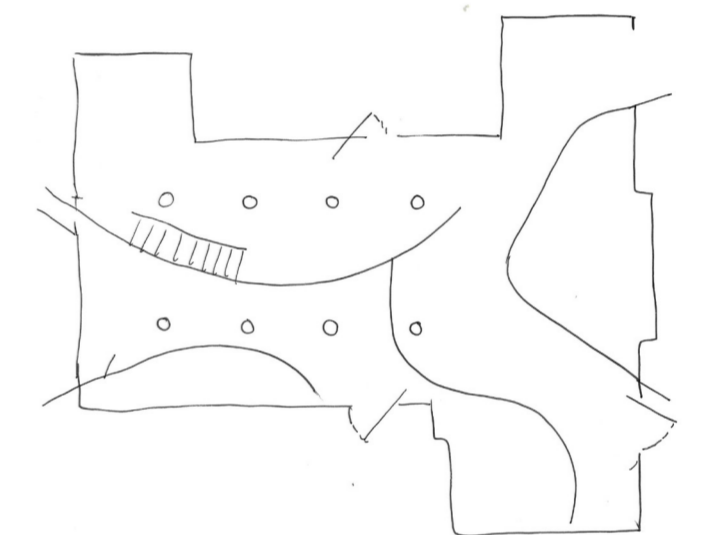
First Floor plan

Pockets



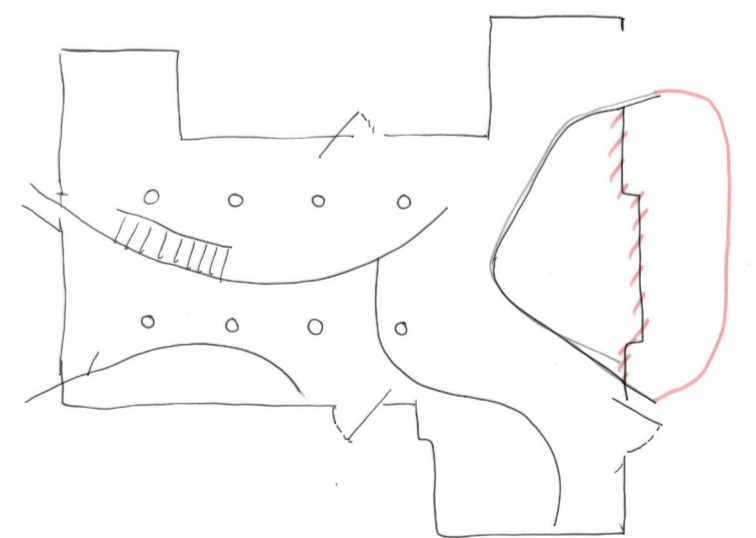
Porous

Iteration



Idea 1

Permeability



Idea 2

Soft

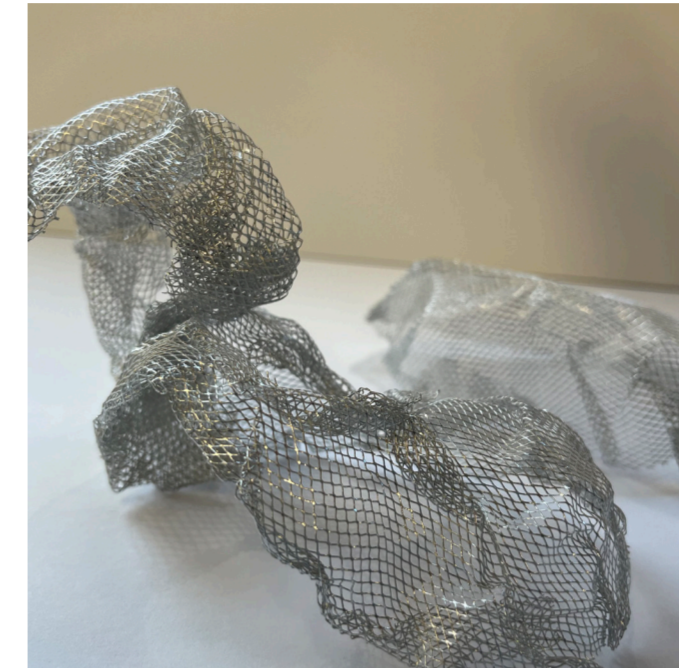
Smooth

Atmospheric Model

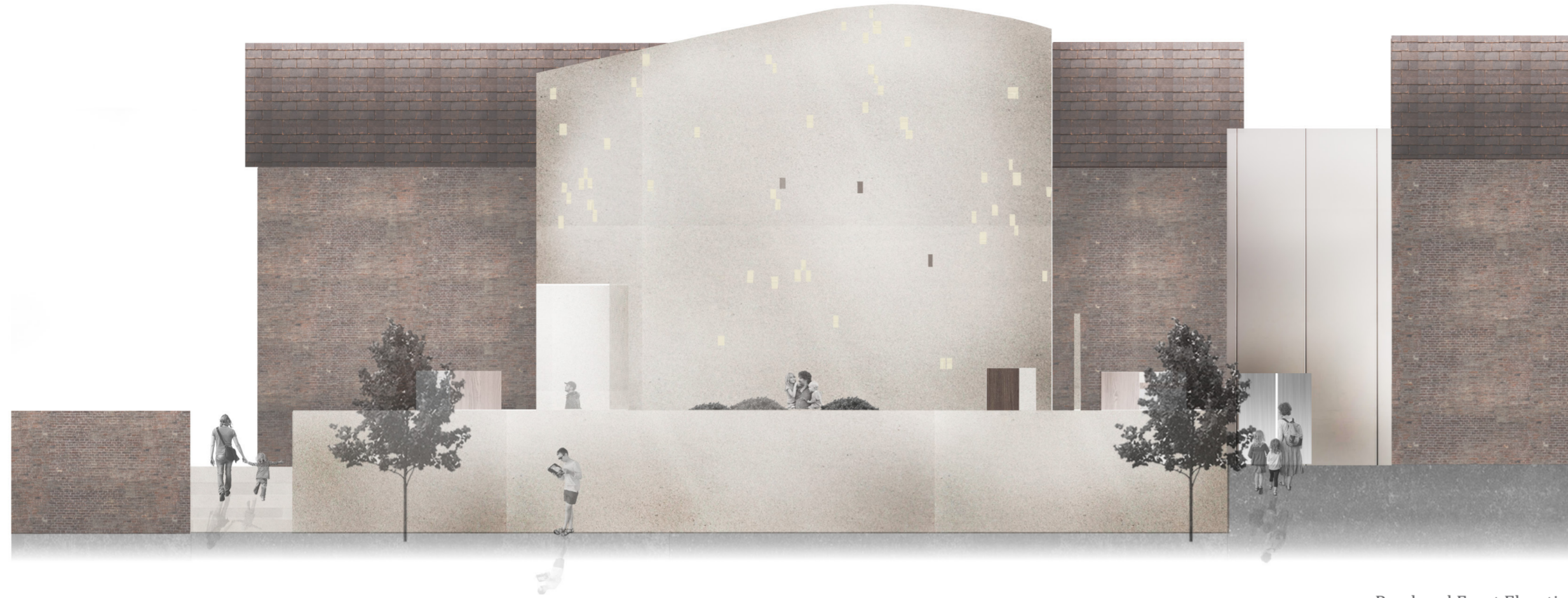
To experiment and explore possibilities, I began constructing an atmospheric model aimed at creating a smooth and cushioned space by using a fine wire to produce volumes and pocket-like spaces. The material qualities of these forms were intriguing, as they held the shape I desired.

To achieve the smoothness I was looking for, I aimed for a plaster-like appeal. Although I intended to use clay, I opted for plaster due to time constraints to get the desired results.

During the photography of my final atmospheric model, I tested different lighting settings. I started with a warmer light to create an evening-like feel in the space. I also enjoyed exploring lighting as a more controlled element by placing a stick light within the form. It was fascinating to see how it glowed within the space. I made sure to capture my model at human eye level, as it was essential to communicate the sense of emotion and qualities within the space.



Exploring with lighting.



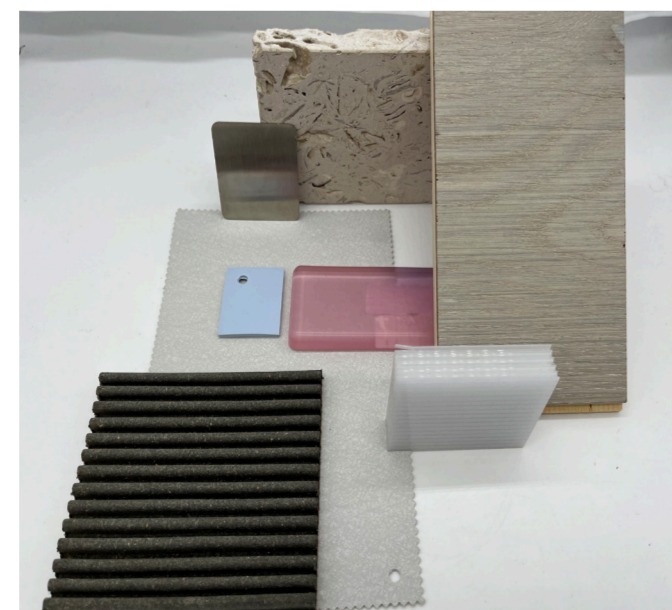
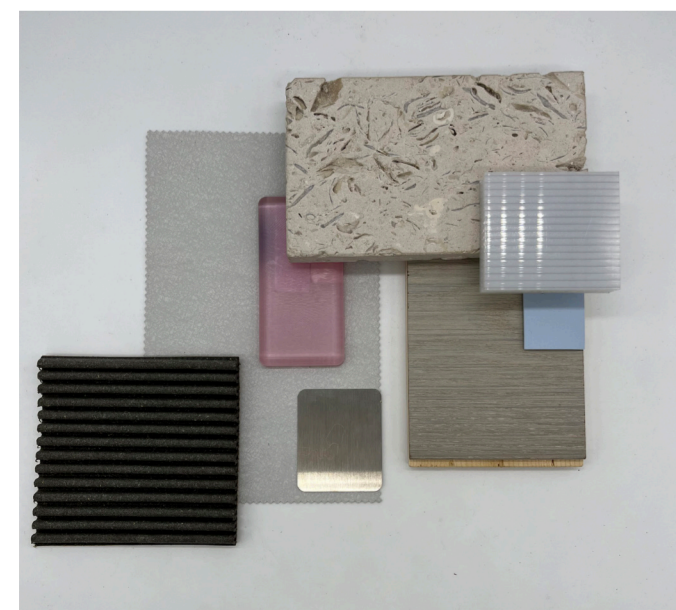
Rendered Front Elevation



Alchemist stair entry experience



Rendered Back Elevation



Exploring with materials allowed me to identify the use of materials I wanted to use within my design that is appropriate for my client.

Photographing my selected materials from a 3-dimensional perspective allowed me to identify the qualities of each sample individually and as a collective, as I was exploring light as a natural daylight source.