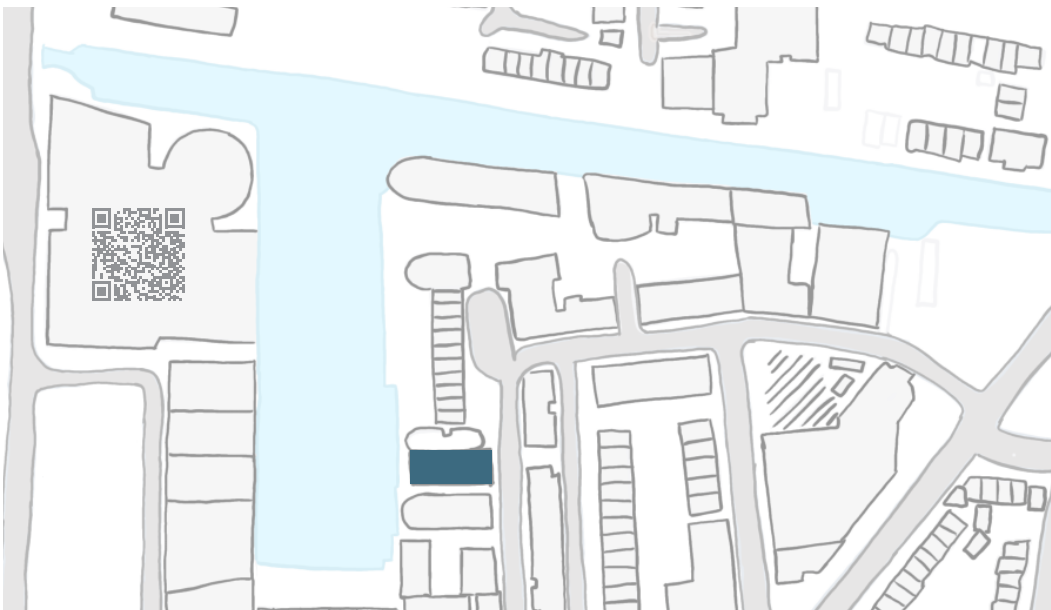


SHELTERED HARBOUR_ alternative ways of living



1

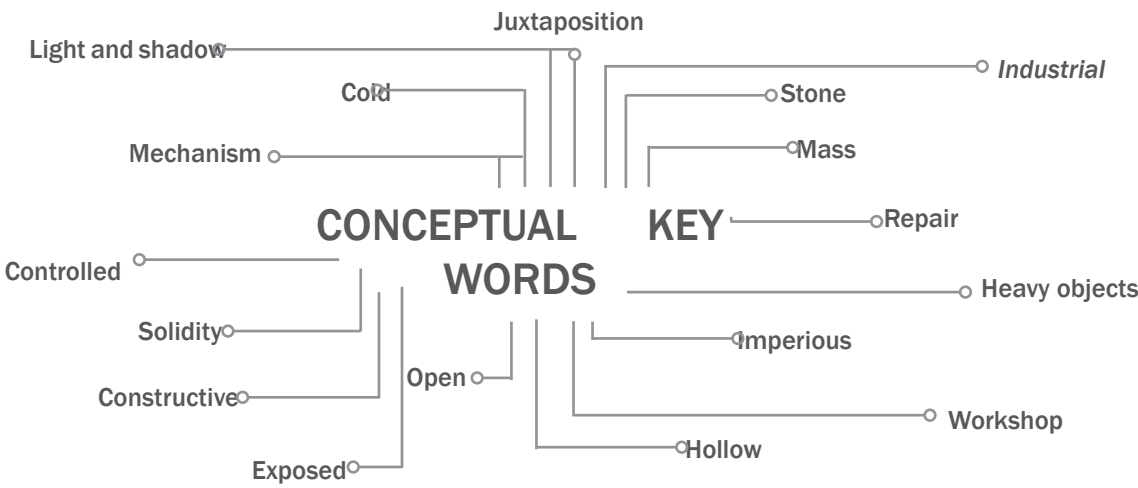


Regents canal museum (Kings Cross, London) is a monument that stands frail, tucked away in a narrow street that traces the canal. It boasts centuries worth of history that had shaped and influenced the ice industry, playing a key role in transporting and storing ice in its aging crumbling walls. It has since been transformed into a museum, displaying itself as a mere carcass of what it used to be.

This project revitalises the structure once more, breathing life into it and giving it purpose, allowing it to serve its community once more by harbouring people living on barges and protecting them from the harsh conditions they face. It also offers maintenance and repair services, tackling the single main issue barges struggle against. It aims to own the building's previous identity and transform its function into something much more relevant.

Providing a new age of industrial use with the space, it will shelter a community that exists outside of the borders of ordinary city life, those that are hidden away from society and face issues that the average city dweller would not come across.

This project aims to tackle the exclusion of the bargee community by allowing the canal basin to intervene itself within the structure, embedding the community into the "city-life" community and structures, tying both worlds simultaneously and bridging the gap between them. Bringing the barges into the heart of the building allows them to be recognised and cherishes an ancient form of transport.



INTENTION

With the intent to re-create the space into a open, spacious and exposed frontier for bargees to regularly arrive and depart from to repair their boats and engine components, while simultaneously stocking up on supplies and using the space to connect with other bargees. There is also the intent to make the space feel as “heavy” and industrial as possible

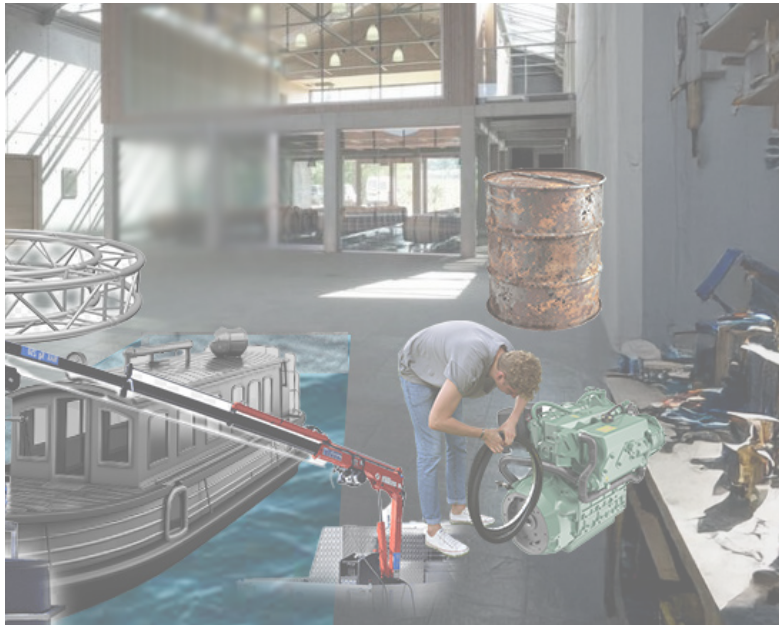


AI ITERATION



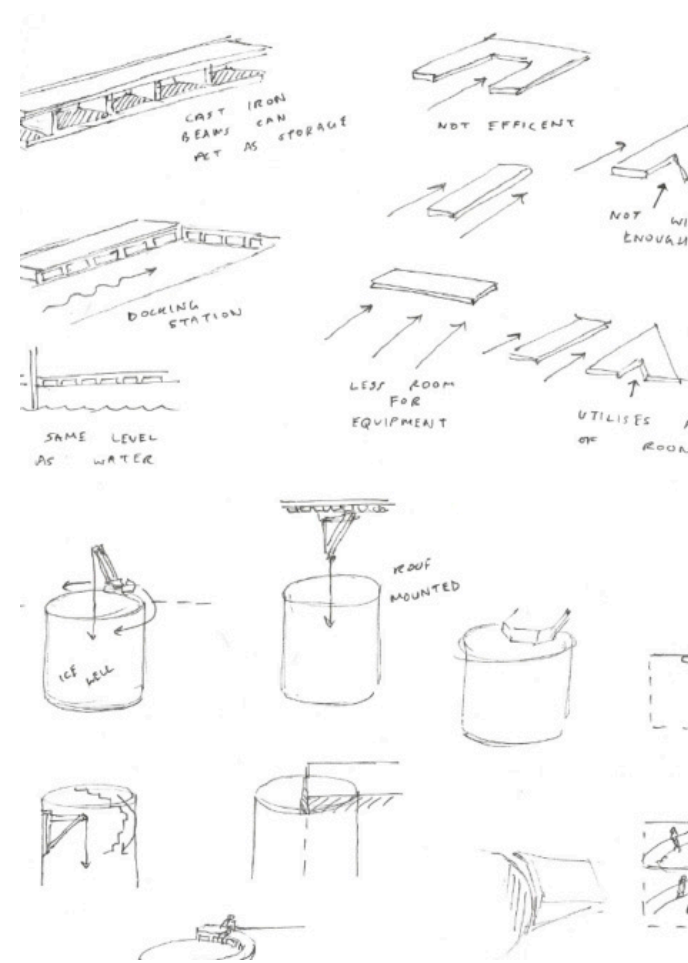
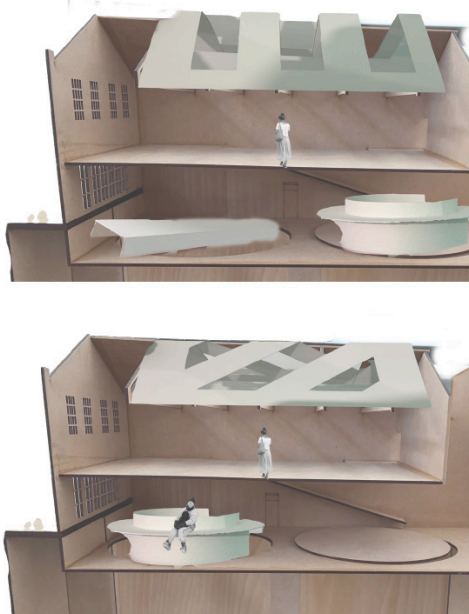
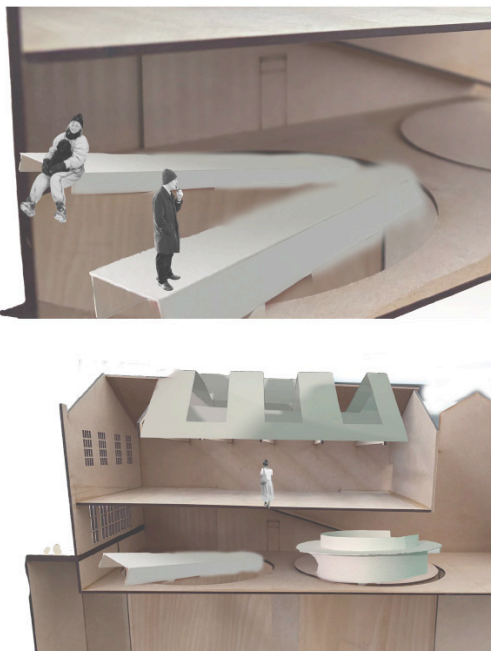
The original render focused more on the work-station lifestyle and maintenance aspect of the space, leaving little room for accomodation and storage.

I would like to alter this, and keep a work-life balance for the clients while they repair and maintain the barges.



Using the generative fill plug-in on Photoshop, I chose to focus more on the work station aspect of the space, increasing the amount of workbenches and storage units that were available.

The workbenches fit seamlessly into the space, keeping the industrial design language while providing an essential function for my clients.



Using model making and sketching, I iterated a multitude of initial ideas to see how they would interact with the space, and how this would affect the pathing of my clients when they use the space. This allowed me to see the best aspects of each idea, and then combine them or re-iterate them to be more beneficial or appealing.



This generated render seems to focus more on the dock, giving the canal boat much more room to breathe, which also would allow for easier lifting of the boat, or transporting of fuel and oil barrels to the boat.

This could prove to be beneficial and an overall quality of life upgrade to the space.



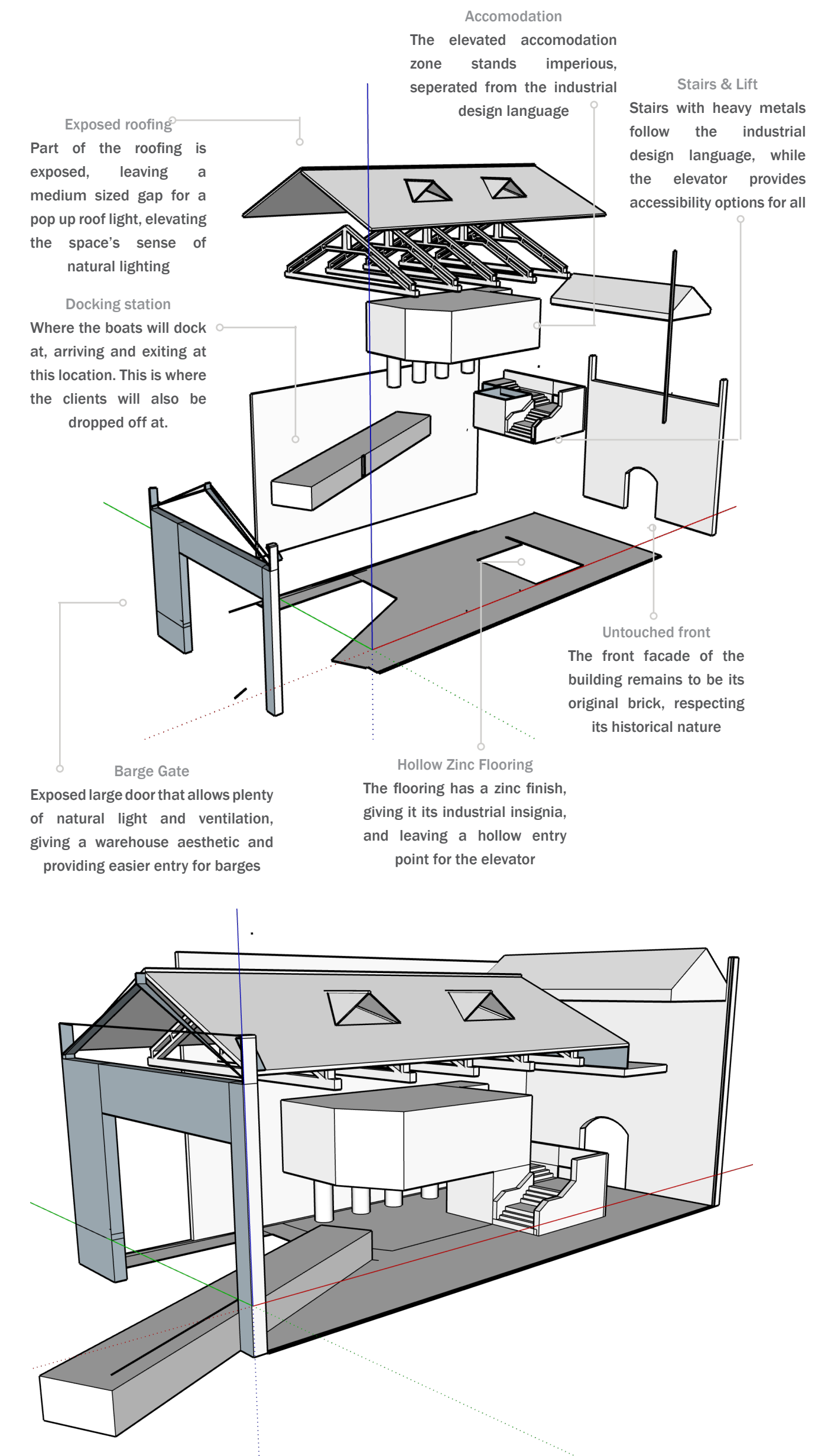
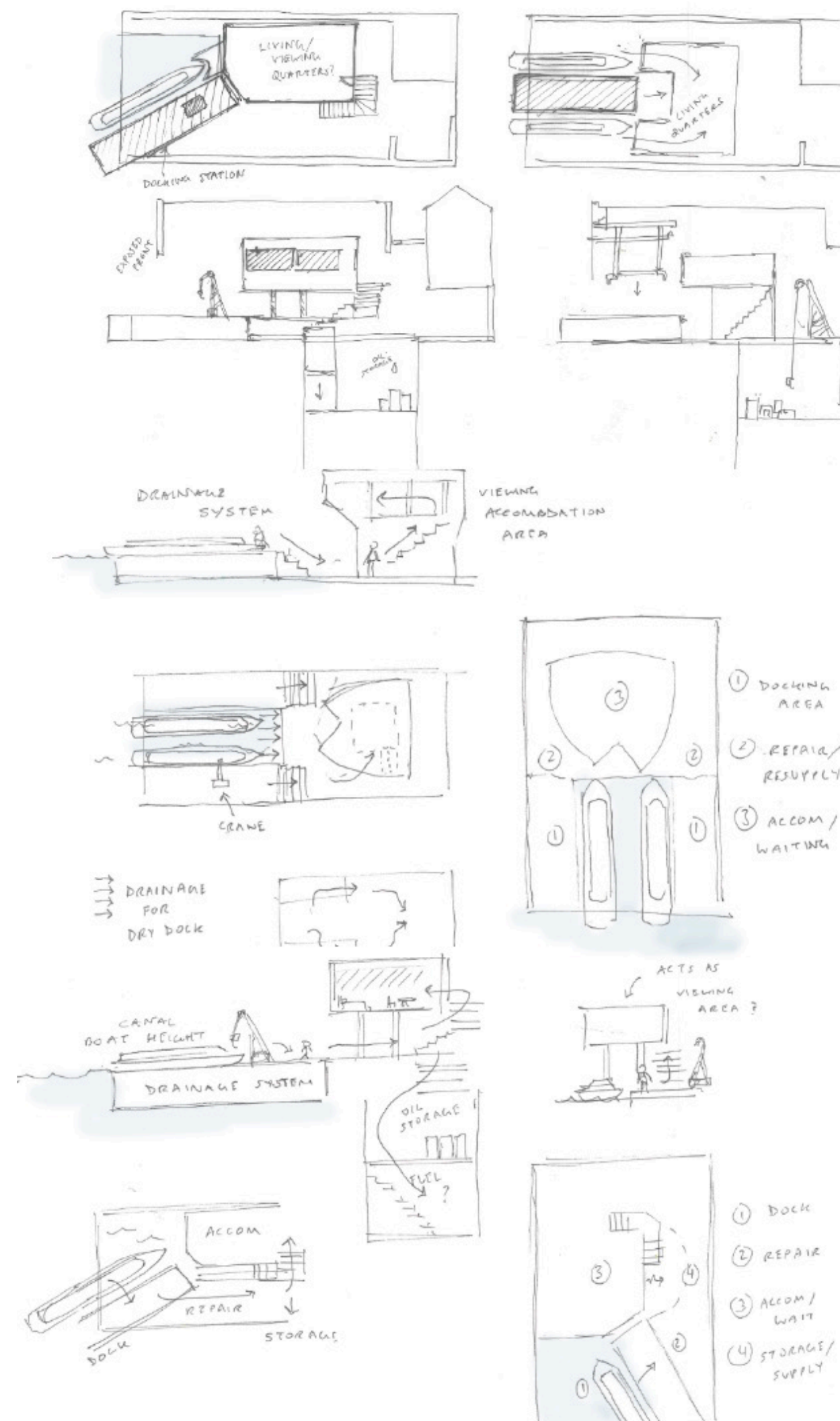
In this generated render, I plugged in the prompt to focus more on the accomodation section of the space, which resulted in a warehouse-like structure featuring a large window.

Aesthetically, this would perfectly align with my industrial design language, while also providing an imperative function and place to stay for my clients.



With the atmospheric collage finished, it provided an accurate idea of how the space should feel, and what objects were essential. All that needed to be changed was the composition and the design of the objects. Altering the compositions of the structures allowed me to experiment with pathing and zoning.

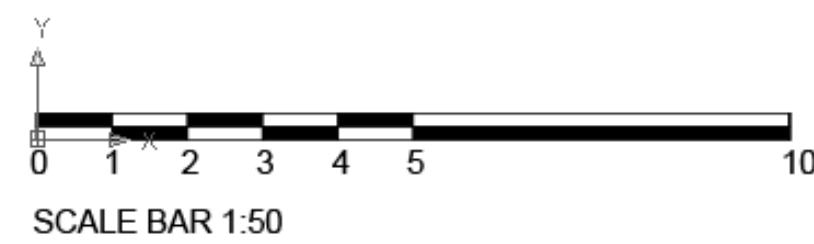
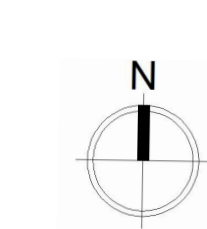
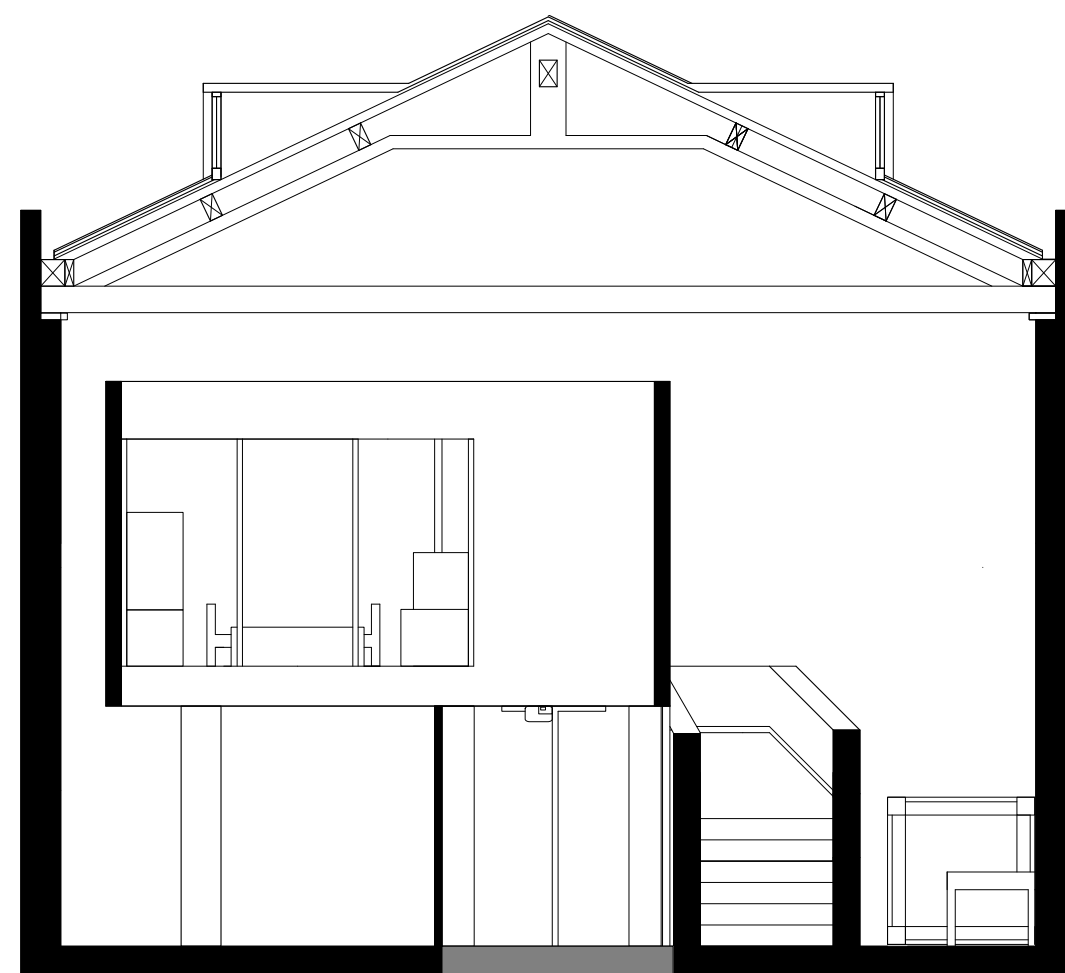
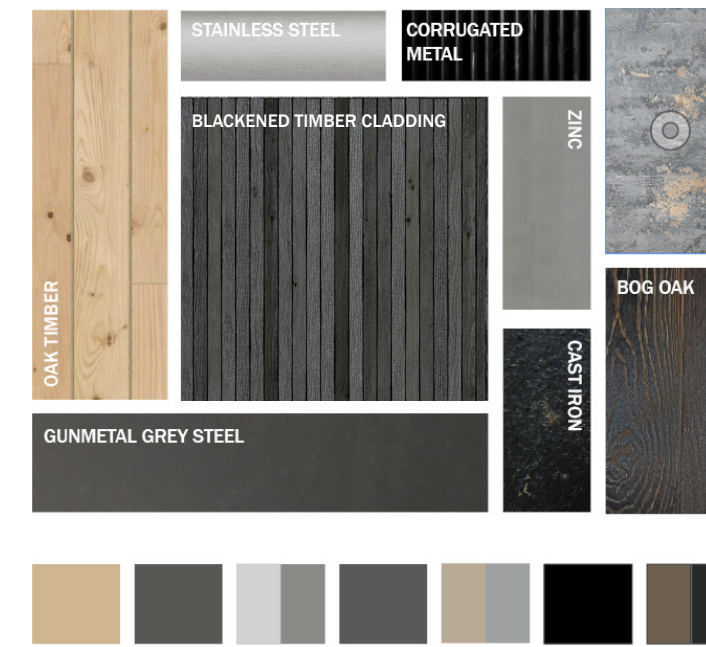
DESIGN DEVELOPMENT



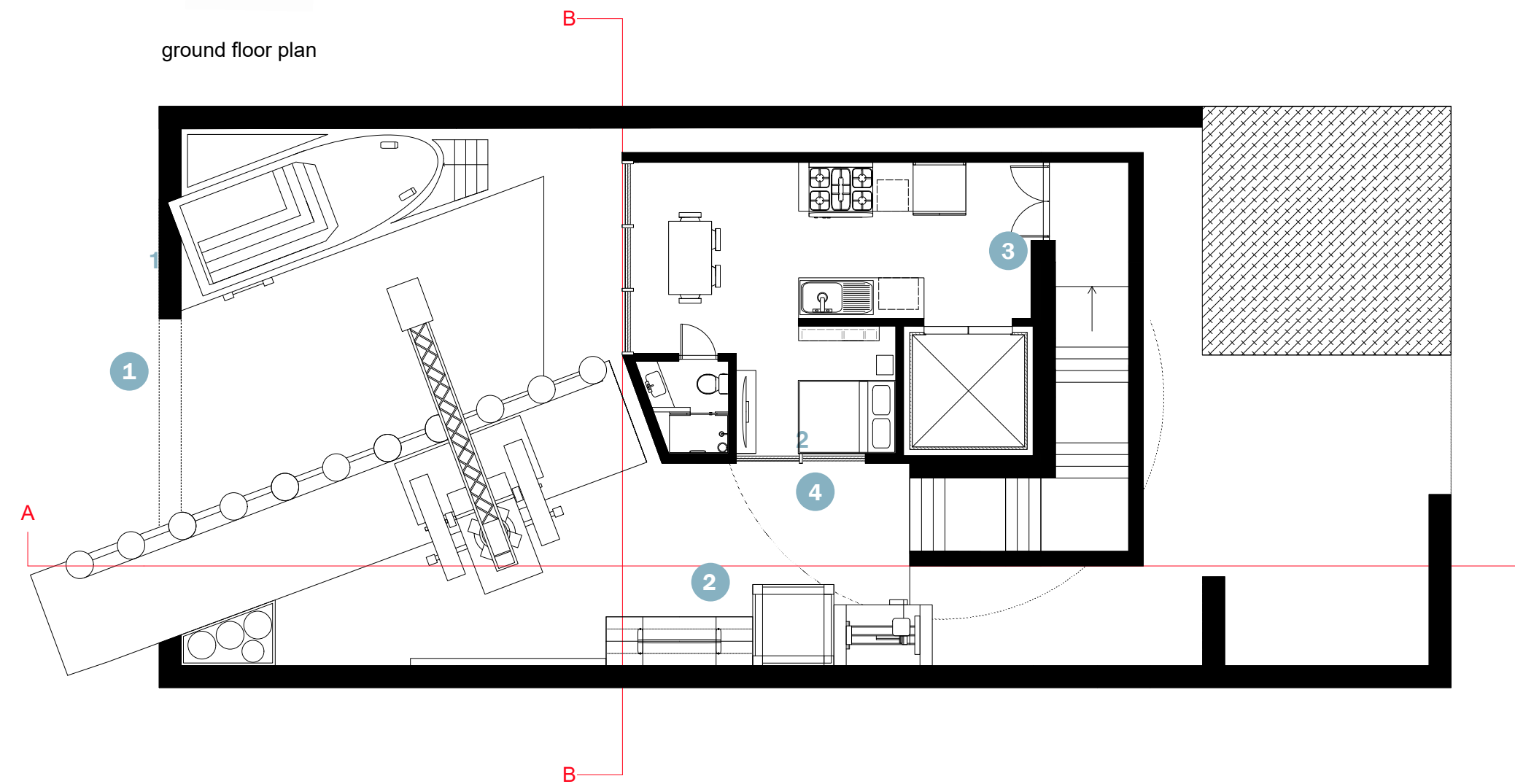


2

Utilising dark rustic materials was essential for this space, to respect the historical influence of it and to follow the industrial design language. Metals with cold rough textures and surfaces were imperative. Wooden accents were also used to provide a contrast while also remaining within the industrial design language.



ground floor plan





VISUAL 3 : This visual depicts the kitchen and dining space within the accomodation zone, showcasing how clients will be able to relax and enjoy a warm meal comfortably in a welcoming environment (compared to the usual harsh and cold outside world) while they wait for maintenance repairs to finish.



VISUAL 4 : This particular visual conveys how the clients will treat the space as if it was their second home. They will finally be able to enjoy a warm shower and have plenty of room to live in while they wait for repairs.

3

LONG SECTION AND VISUALS



4

The long section demonstrates the story of how the clients will traverse through the space. They will firstly dock at the docking station, allowing the crane to lift the barge so passengers can depart safely. The boat then begins repairs while the clients make their way towards the accomodation zone (via stairs or the elevator for disabled access). The change in materiality along this journey symbolises the contrast and transformation of the space when the bargees enter, rivalling the harsh cold outside with a much more warmer inside.

The materials outside of the accomodation zone feature harsher, colder metals that show visible wear and rust (tributing the previous industrial nature of the space) while the materiality of the interior space features much more warmer tones and softer textures.

