

Bagley's Brewery by Lovinth Rao

Brewing Conversations

:Fostering Connection, Expression, and Memory

Coal Drops Yard has been a hub of expression since the 19th century, whether through shared work or music that brought people together. Today, amid the rapid gentrification of London, the community needs a space where their stories can be expressed, shared, and remembered. I believe Coal Drops Yard offers the ideal opportunity to do that by revitalising pub culture in a place long tied to communal connection.

My vision is to repurpose the existing building into a brewery that honours its industrial heritage while supplying a network of integrated pubs, creating a modern social hub rooted in the building's history. By restoring pub culture, I hope to provide a welcoming environment where the community feels comfortable sharing their stories and music in a space made for them.

PUB STUDY



The Cock Tavern is a sports-focused pub, with a strong emphasis on football. Regular patrons are devoted Celtic FC fans, reflected in the interior filled with Celtic memorabilia. The pub also supports a local football club, displaying trophies and involving fans in the game-day experience, reinforcing its role as a hub for football culture.

Beyond sports, the pub offers pool and darts, with a chalkboard tracking years of scores adding friendly competition and continuity. Drawings of regulars by the bartender's children above the fireplace add warmth and reflect close ties between staff and patrons.

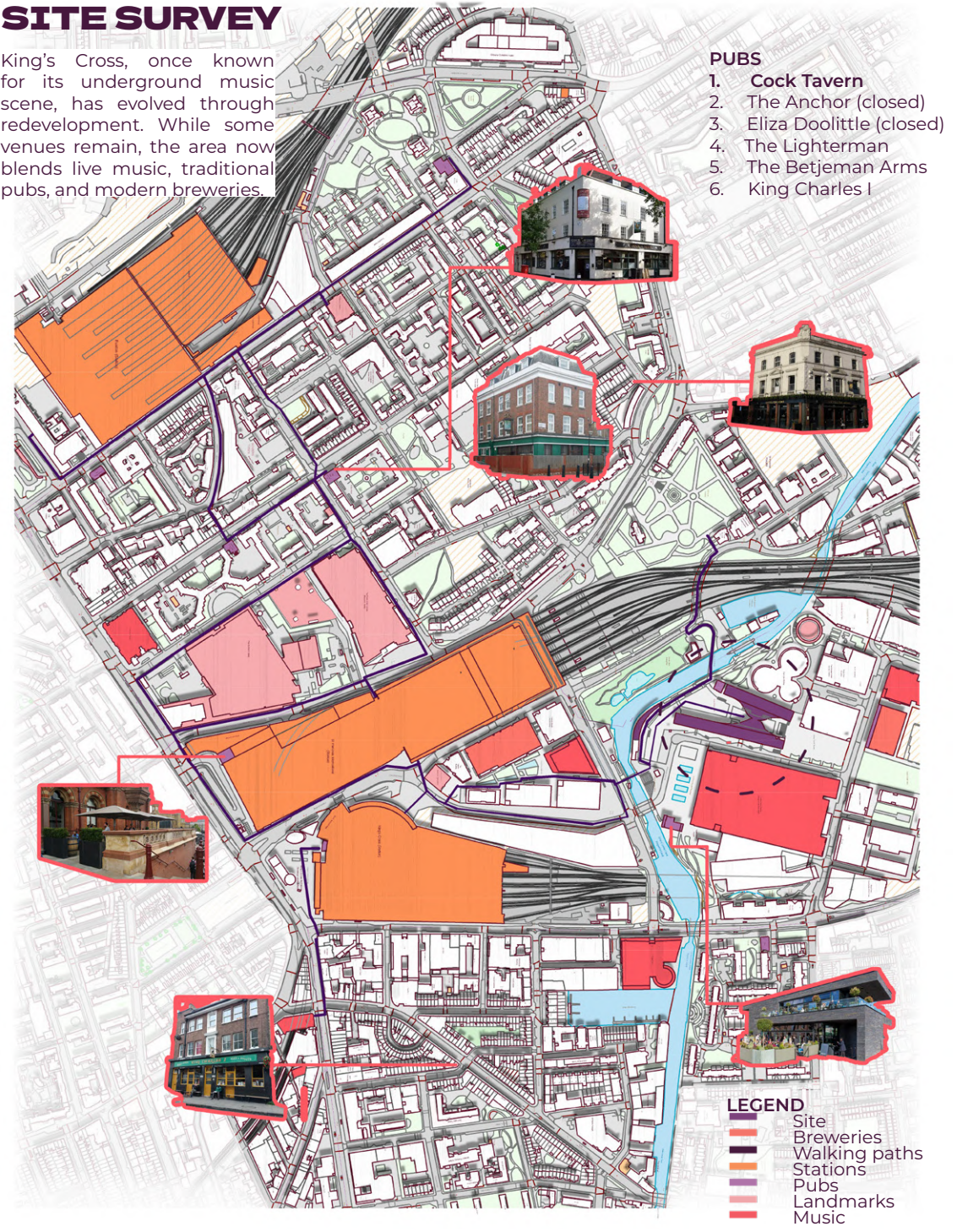
The décor captures the community's spirit, making The Cock Tavern a living reflection of its regulars.

The Greyhound, on the other hand, focuses more on music, social interaction, and historical character. It honors notable past patrons like Arsenal legend Herbert Chapman and Stamford Raffles, whose stories are displayed on its walls. The interior has evolved through contributions from guests, with books and board games left behind over time, fostering a shared culture and sense of trust.

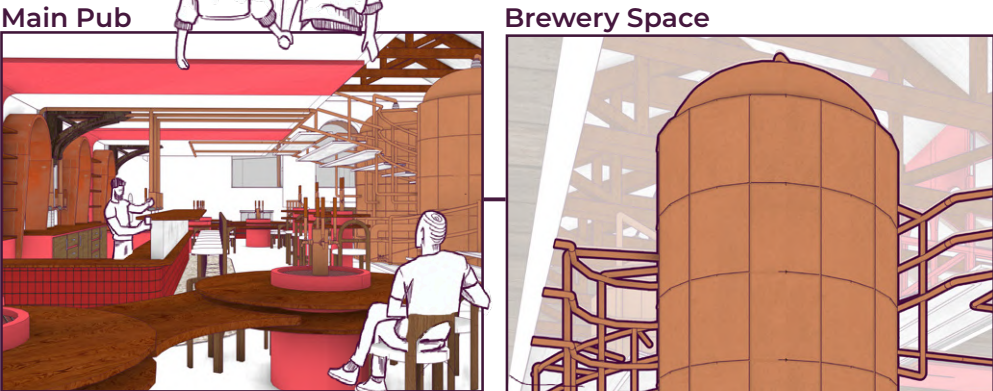
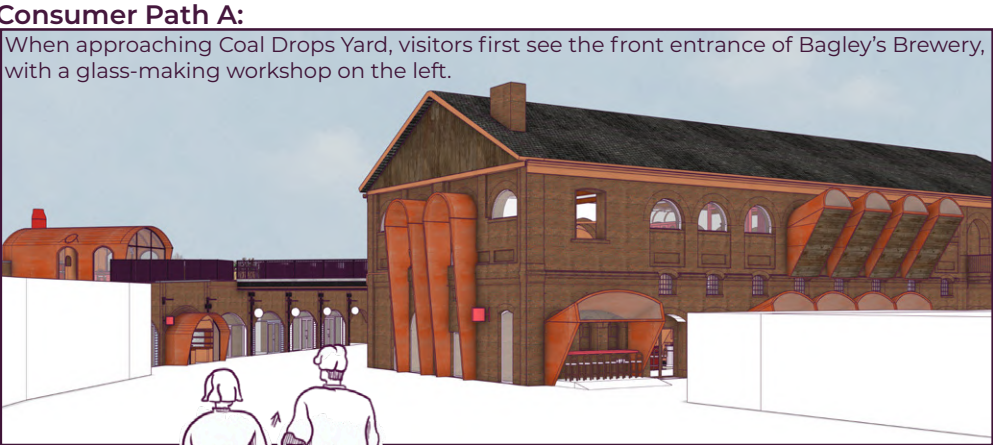
Its proximity to a college brings in students, especially musicians, who use the space to practice and perform live, gaining valuable experience and feedback. The Greyhound transitions from a calm, reading-friendly space during the day to a lively venue at night, hosting music events, quizzes, and games that encourage connection and strengthen its role as a community gathering spot.

SITE SURVEY

King's Cross, once known for its underground music scene, has evolved through redevelopment. While some venues remain, the area now blends live music, traditional pubs, and modern breweries.



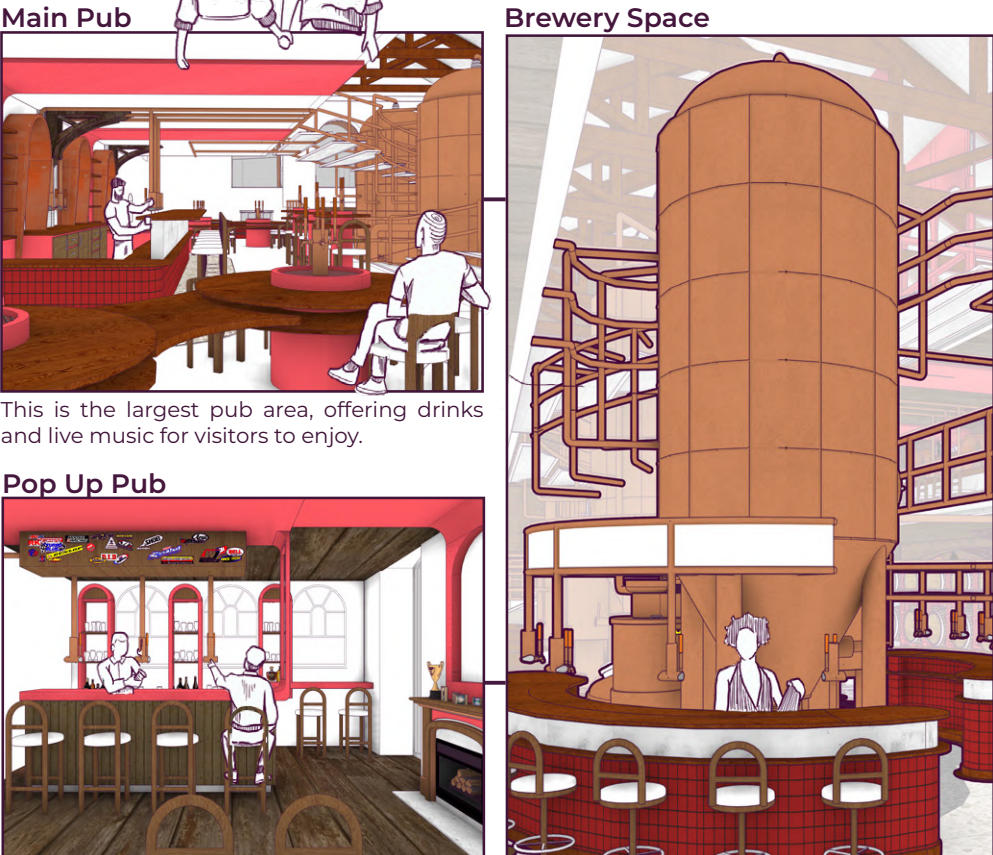
STORYBOARD



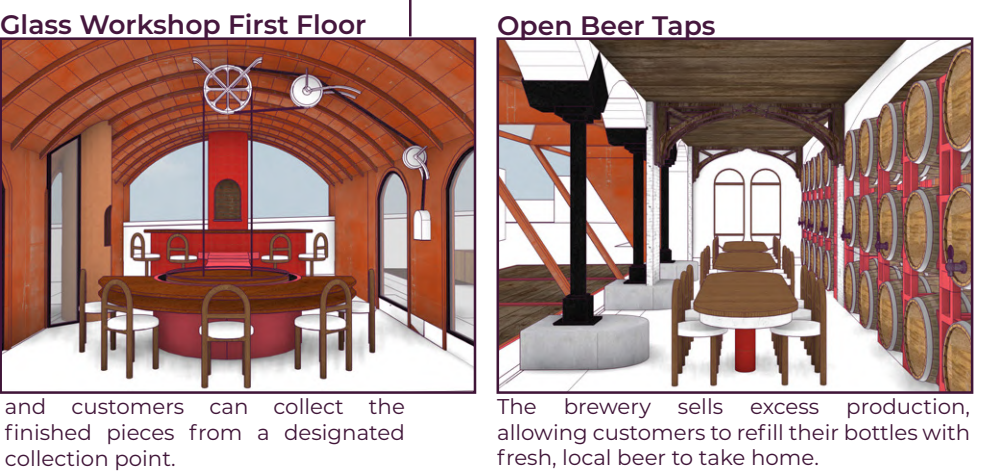
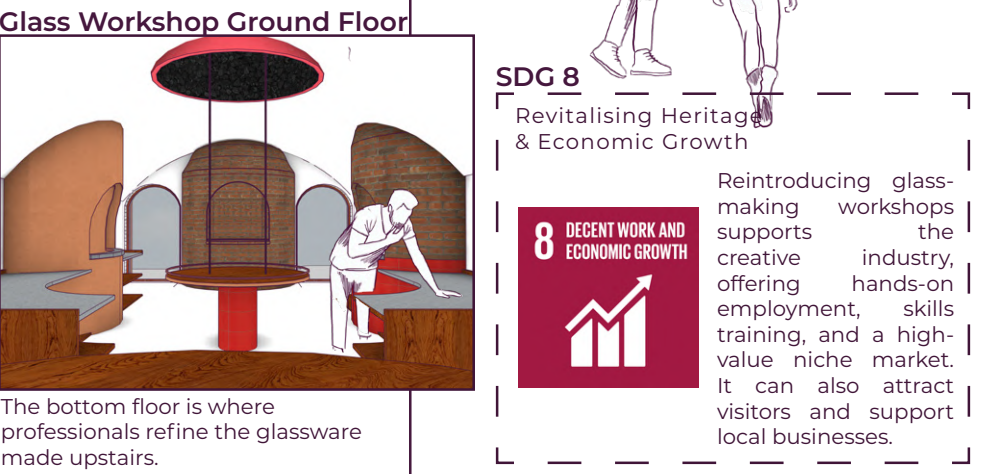
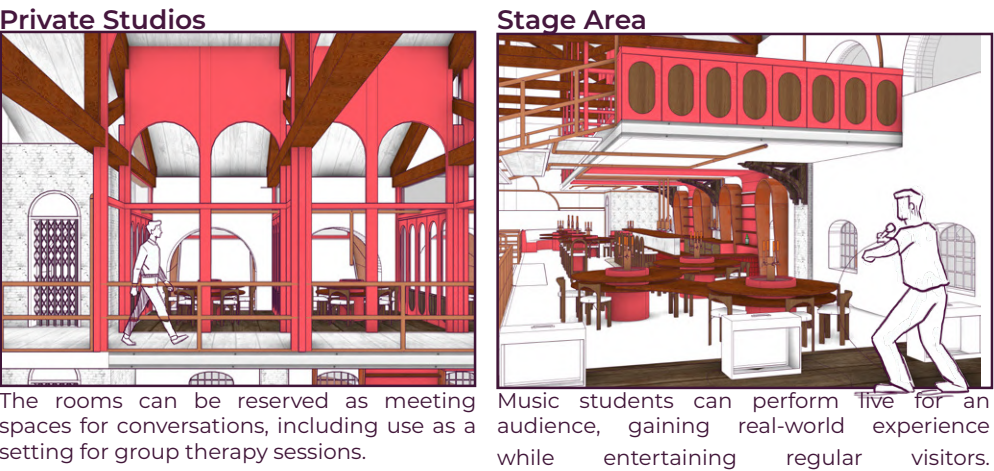
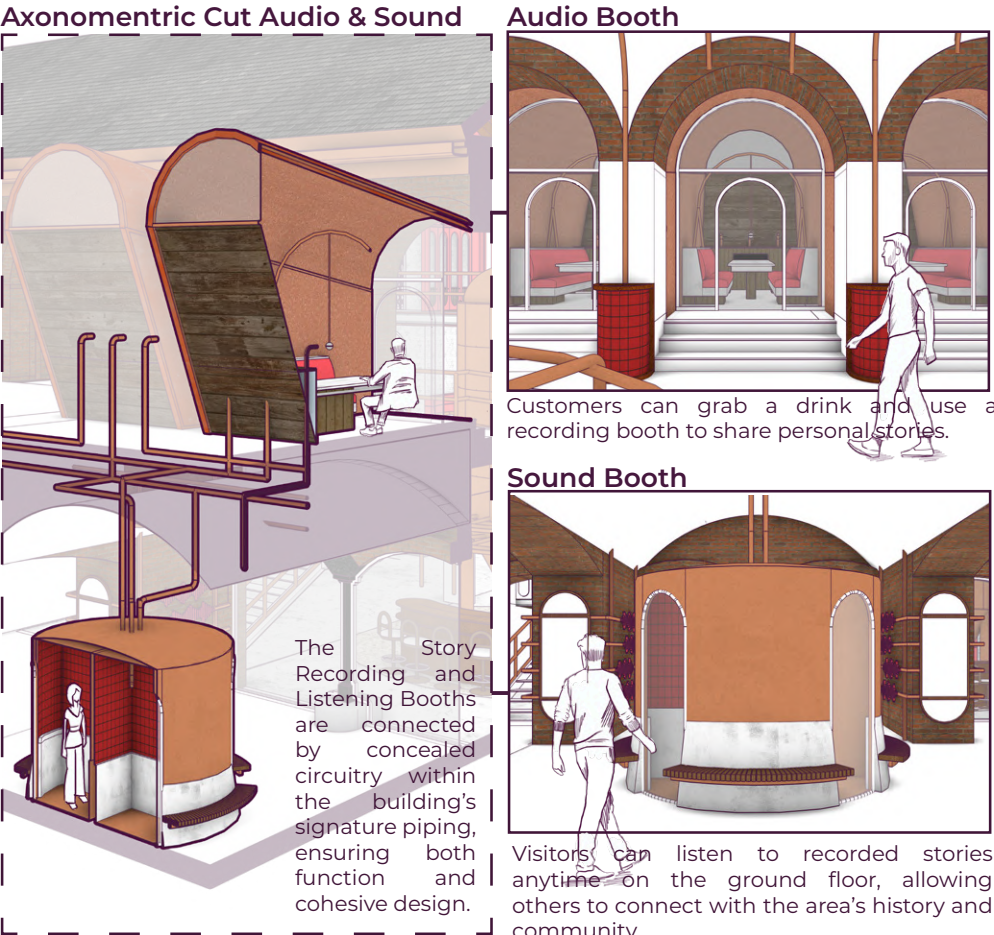
This is the largest pub area, offering drinks and live music for visitors to enjoy.



The pop-up pub is a rentable, compartmentalized space where local pubs like The Cock Tavern can serve drinks.

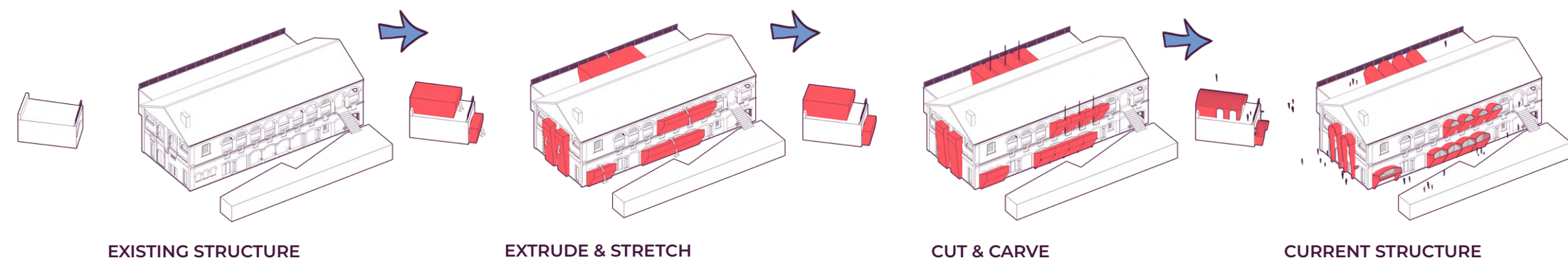


The ground-floor brewery connects to both pubs and includes five food stalls, creating a space for fresh beer and diverse dining.





SEQUENTIAL DIAGRAM



MANIFESTO

The project aims to create a welcoming space where people can share their stories, voices, and music, while building an archive to preserve local narratives—supporting the theme of storytelling and lost histories (RS2). Drawing from the familiar and inclusive atmosphere of pubs like The Cock Tavern, it fosters a sense of home and belonging, addressing the loss of communal spaces (RS1).

In response to the decline of traditional brewing in King's Cross, the project also proposes reintroducing breweries to revive a historic industry and generate local employment, aligning with learning through making and lost skills (RS3).

The accompanying manifesto poster outlines a vision that connects a ground-floor brewery with multiple pub spaces, offering affordable beer and reinforcing local identity. It supports venues like The Cock Tavern and takes inspiration from The Cross Keys Pub, aiming to preserve the community's character amid redevelopment.

SDG GOALS



Supporting local farmers by purchasing barley and malt boosts their income and strengthens the local economy (2.3). This investment also contributes to rural development by funding farm maintenance, infrastructure, and agricultural advancements, benefiting both the farmers and the brewery's production quality (2.6).



Purchasing from local producers and opening a brewery supports sustainable economic growth by increasing farmer incomes, creating jobs, and introducing new products (8.1). Connecting the pub directly to the microbrewery improves resource efficiency by reducing transport needs and allowing real-time production adjustments based on demand, minimizing waste and excess stock (8.4).



The project aims to protect cultural heritage by revitalizing pub culture and preserving the historic structure of Coal Drops Yard through adaptive reuse (11.4). It also promotes sustainability by using local, resilient materials and smart building strategies to reduce costs, environmental impact, and energy consumption (11.A).

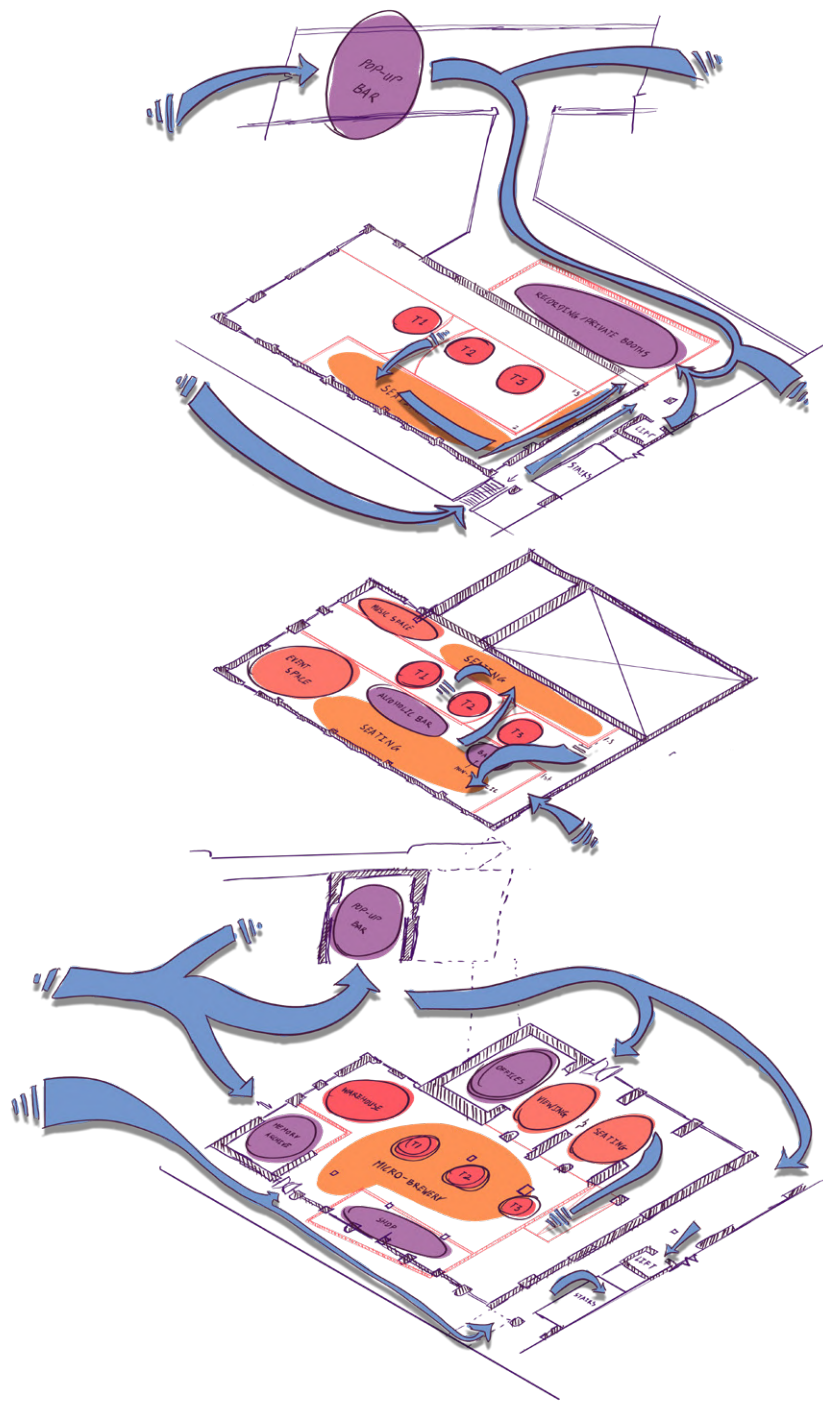


Efficient management of the brewery and pub helps reduce waste and supports the sustainable use of natural resources (12.2). Integrating renewable energy sources like solar power and kinetic tiles—such as those by Pavegen—alongside smart building strategies can further reduce electricity consumption and enhance sustainability (7.2).

DESIGN GOAL

To create a space that fosters community through shared stories, music, and drinks, while celebrating and preserving local history. The architecture serves as a platform for capturing personal experiences, helping the community reclaim its heritage and strengthen collective identity—with minimal changes to the building's facade, yet fully embracing its renewed purpose through its design.

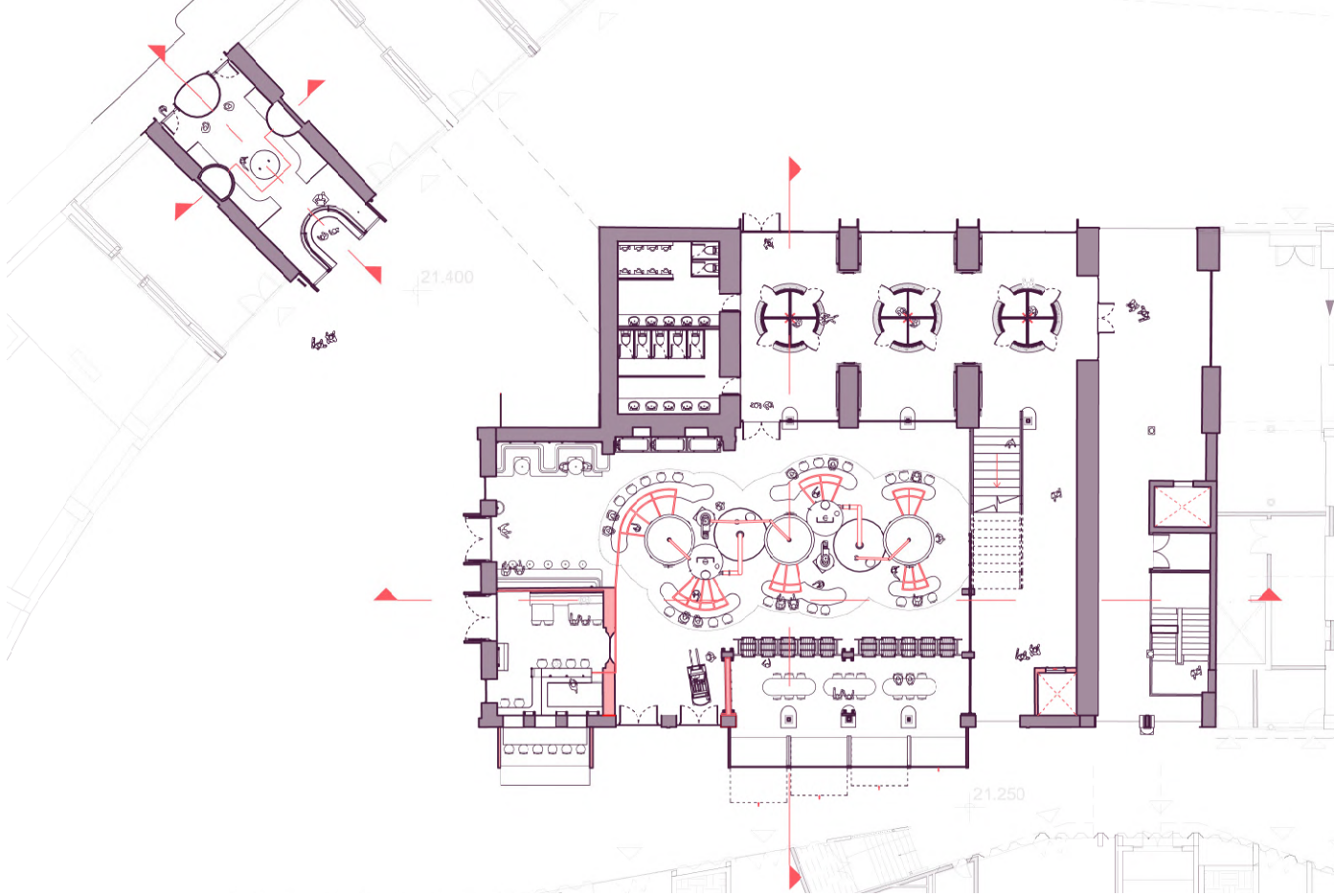
CIRCULATION



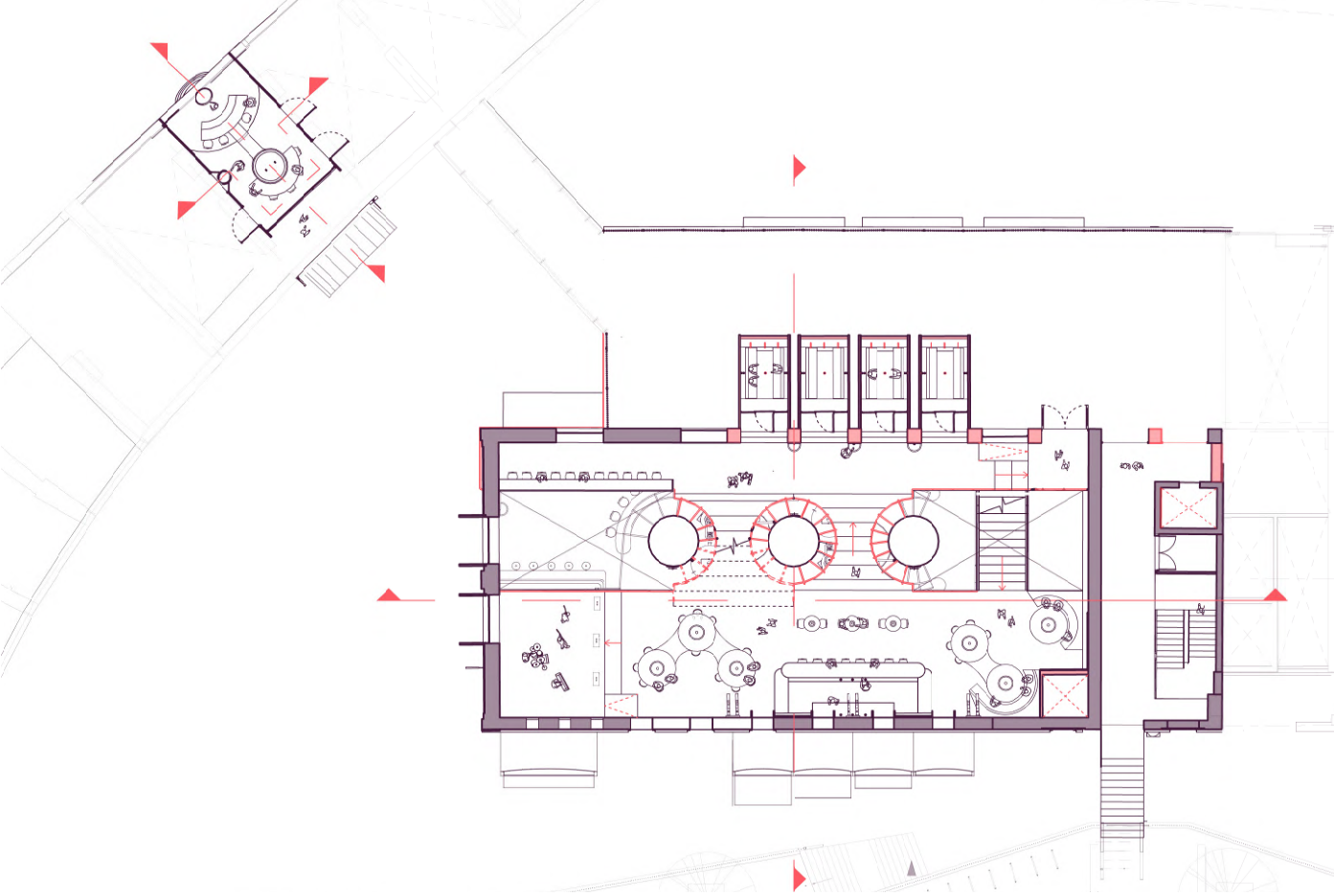
DEMOLITION PLAN



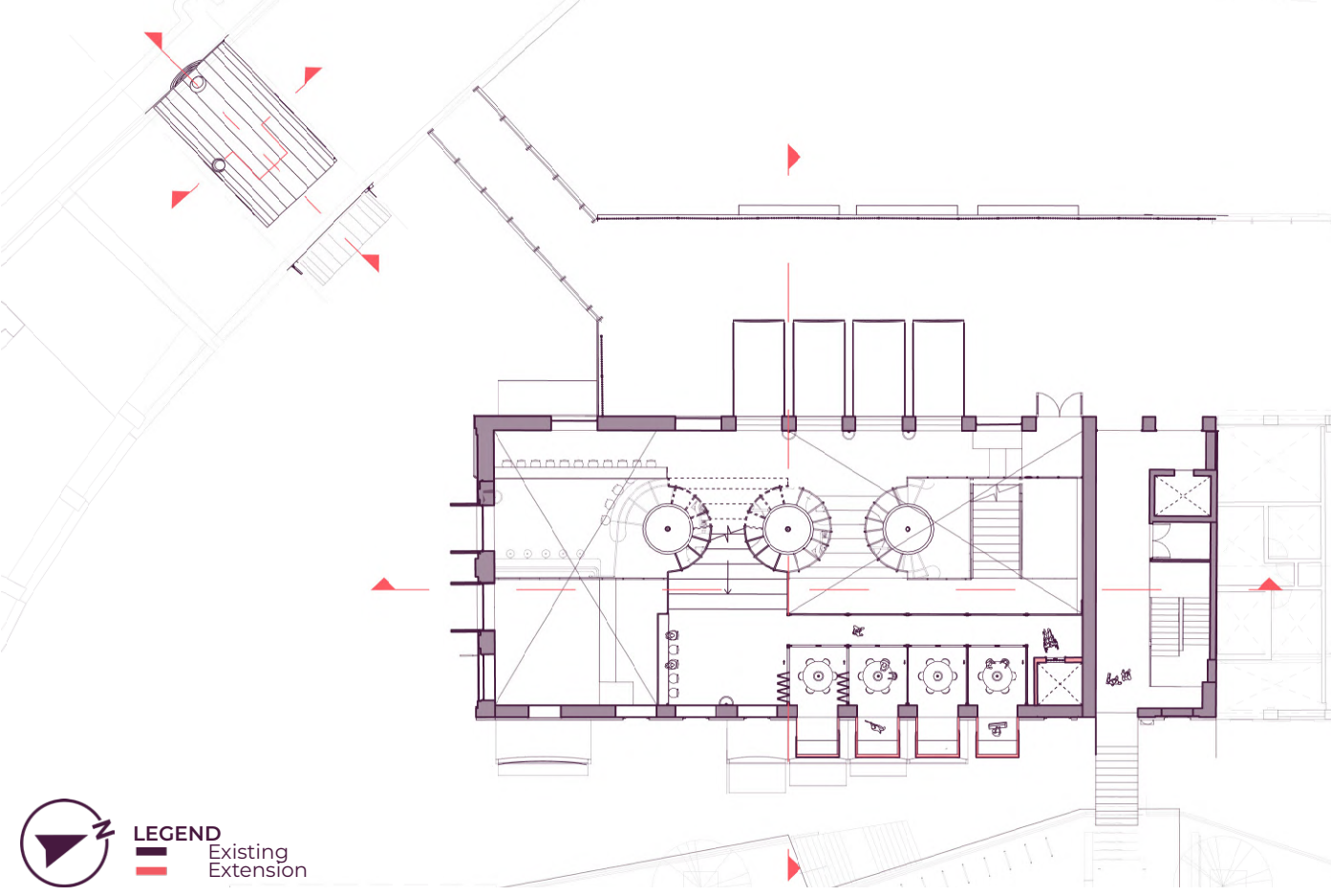
GROUND FLOORPLAN



FIRST FLOORPLAN



SECOND FLOORPLAN



Story Recording Booths



Story Listening Booths



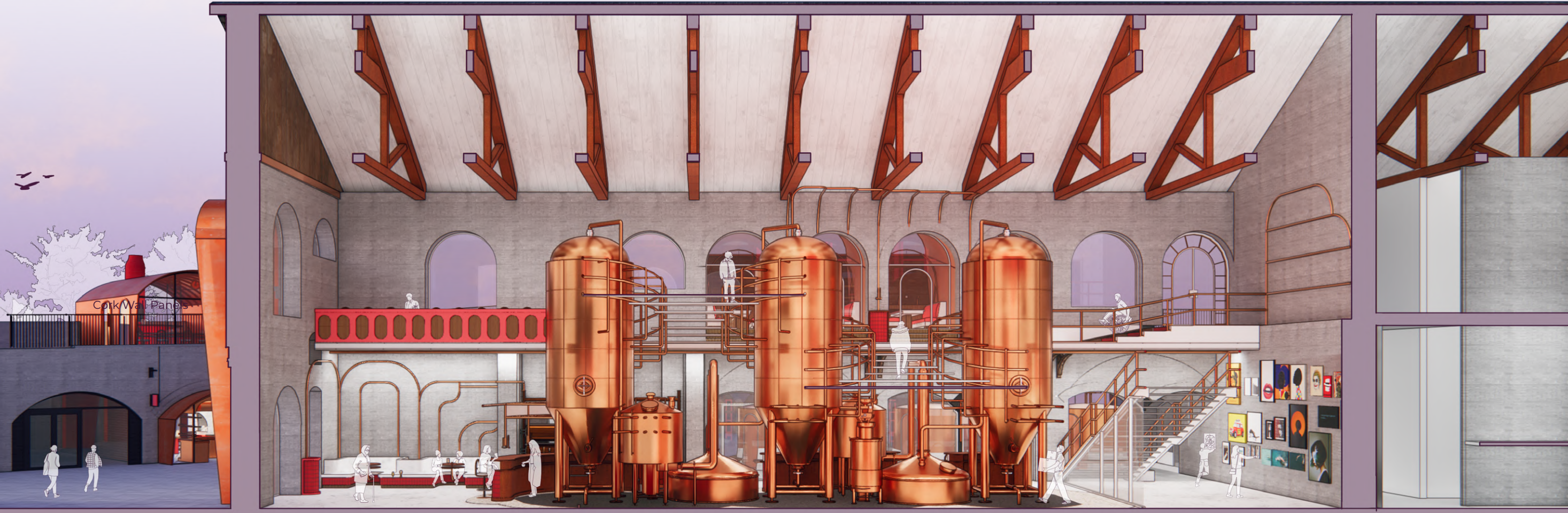
MATERIAL BOARD



Personality is a big part of pub culture, as the space tends to adopt the personality of its community. This is why I chose primarily muted colors inspired by the original site, to celebrate and respect its history, with a burst of red to convey the area's revitalization.

Why Red?
Red evokes warmth, energy, and comfort—qualities that align perfectly with the inviting, social atmosphere of a pub or brewery. It stimulates appetite and creates a cozy, lively environment, especially in dim or intimate lighting. Most importantly, it is a color that stimulates conversation. In many older pubs and breweries, red appears in brickwork, timberstains, signage, and interiors, lending a timeless, rustic character. It taps into tradition and gives a sense of place—especially in spaces aiming to preserve local identity or resist sterile redevelopment.

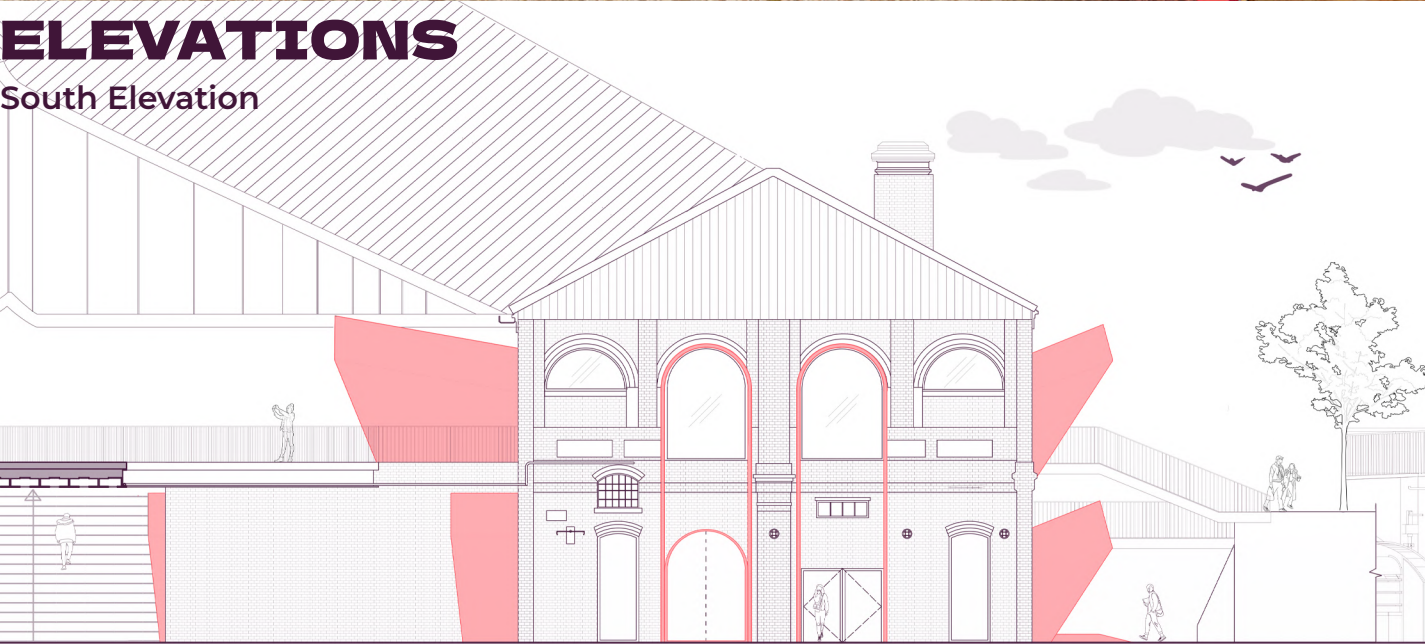
HERO SECTION



Outdoor Pub



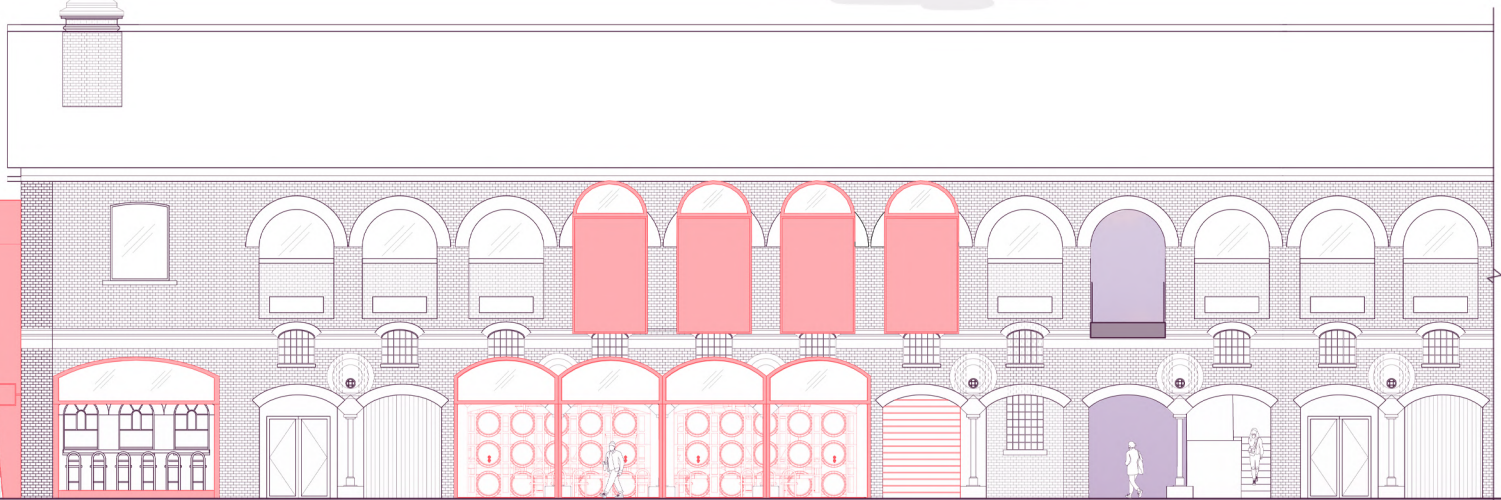
ELEVATIONS
South Elevation



Private Booths



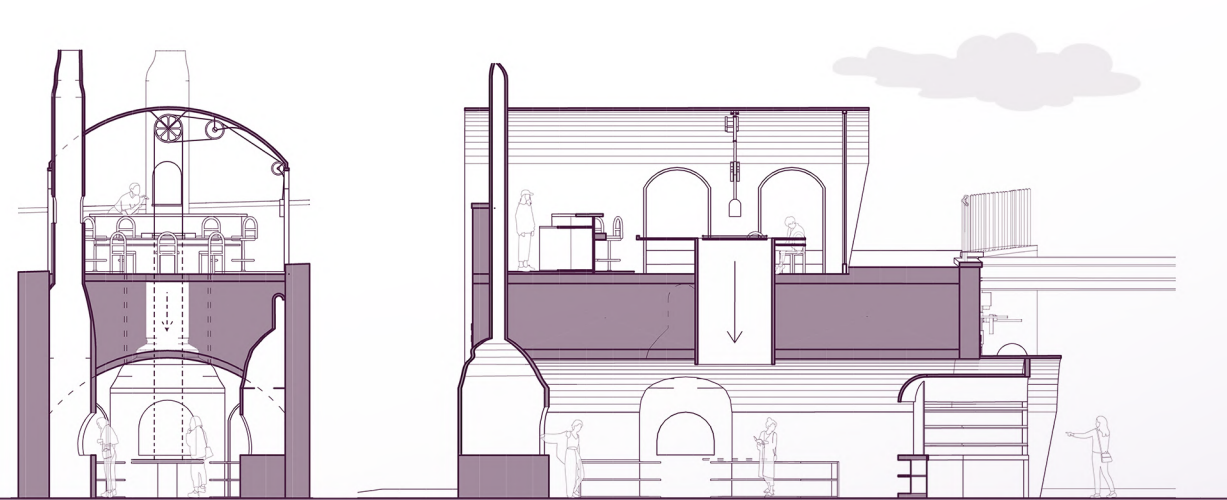
East Elevation



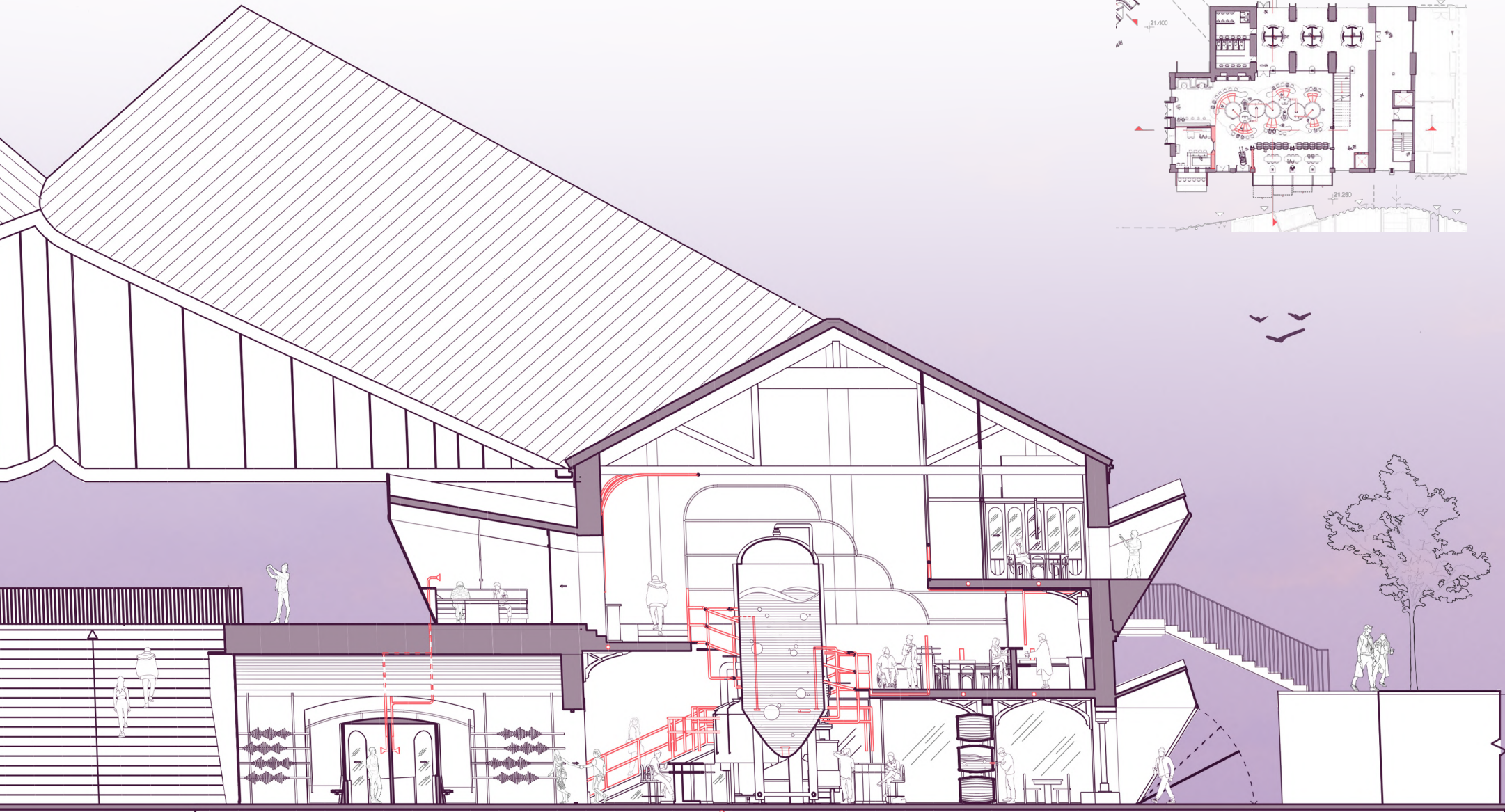
Pop-up Pub



ARCH
Long And Short Section



SHORT SECTION

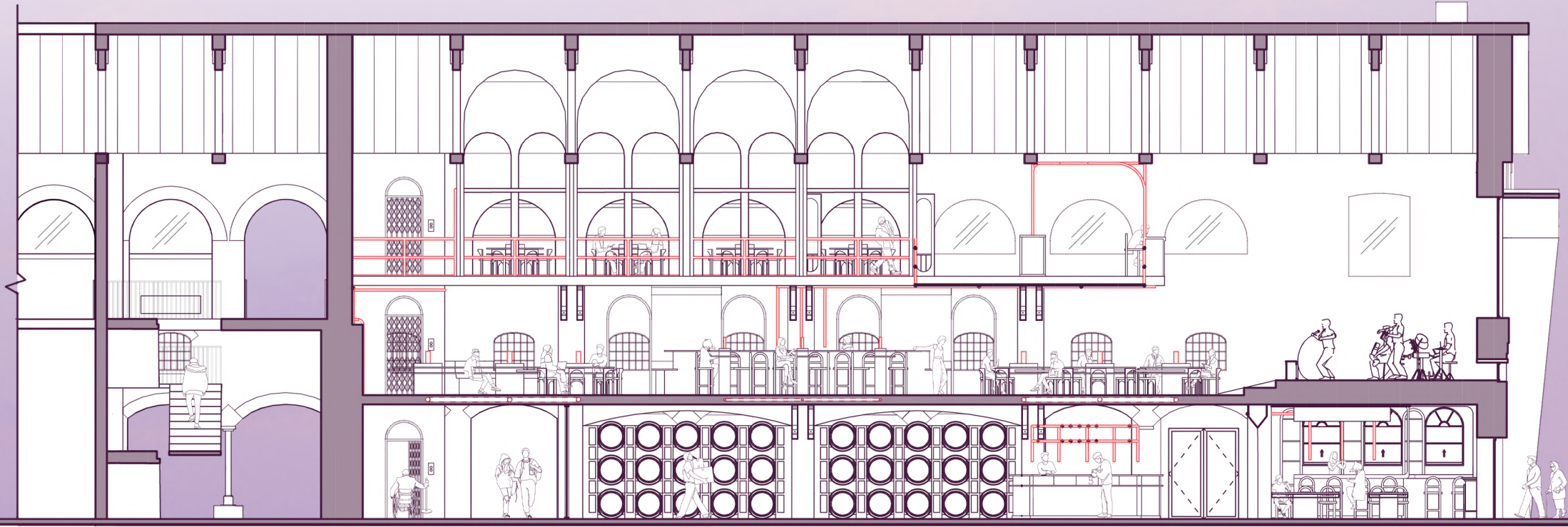
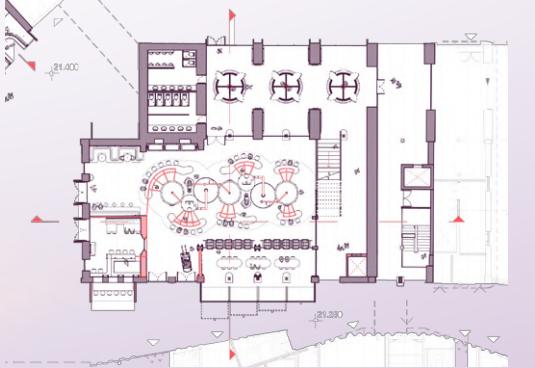


LONG SECTION

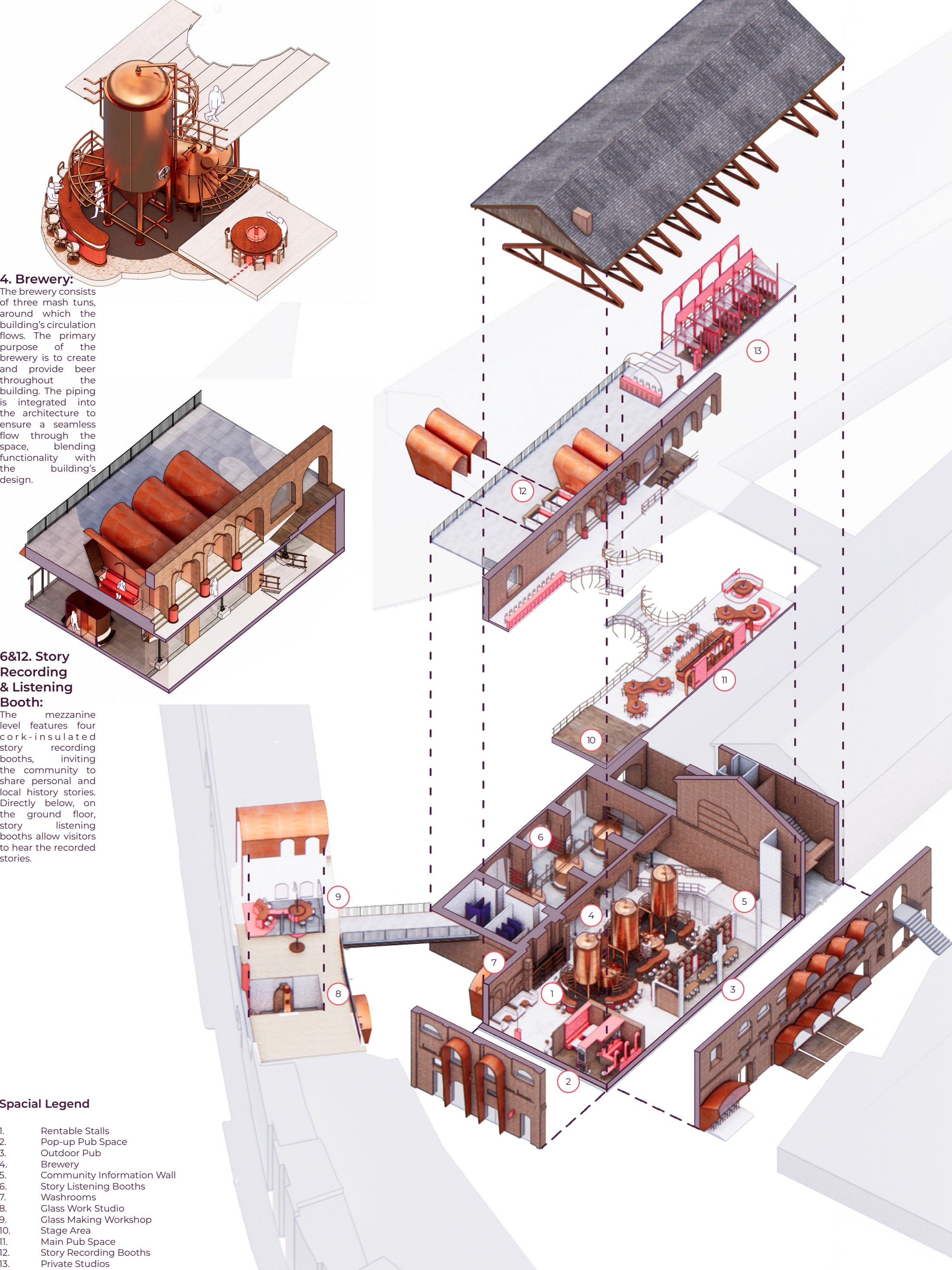
In Bagley's Brewery, the piping system plays a central role in both the function and identity of the space. It is designed not just to transport beer from the brewery to various stalls, pubs, and tables, but also to serve as a key architectural element. The pipes are exposed and integrated into the building's design, acting as railings, table legs, signage, and lighting. This reinforces the building's industrial character and creates a cohesive aesthetic throughout.

Beyond functionality, the piping also facilitates storytelling by housing the wiring that connects the story recording booths on the mezzanine to the listening booths on the ground floor. In this way, the pipes carry both beer and voices, symbolically linking community memory and social experience.

Visitors interact with the pipes in multiple ways—physically by pouring drinks or leaning on railings, and emotionally as the piping becomes part of the space's atmosphere and narrative. Altogether, the piping system is a vital part of Bagley's Brewery, bringing together utility, design, and human connection.



DETAILED AXOMETRIC VIEW



4. Brewery:
The brewery consists of three mash tuns, around which the building's circulation flows. The primary purpose of the brewery is to create and provide beer throughout the building. The piping is integrated into the architecture to ensure a seamless flow through the space, blending functionality with the building's design.

6&12. Story Recording & Listening Booth:
The mezzanine level features four cork-insulated story recording booths, inviting the community to share personal and local history stories. Directly below, on the ground floor, story listening booths allow visitors to hear the recorded stories.

- Spatial Legend**
- 1. Rentable Stalls
 - 2. Pop-up Pub Space
 - 3. Outdoor Pub
 - 4. Brewery
 - 5. Community Information Wall
 - 6. Story Listening Booths
 - 7. Washrooms
 - 8. Glass Work Studio
 - 9. Glass Making Workshop
 - 10. Stage Area
 - 11. Main Pub Space
 - 12. Story Recording Booths
 - 13. Private Studios

Arch Building Point of View

To revitalise Coal Drops Yard's glassmaking history, I've reintroduced glass workshops to produce custom glasses and bottles for pub customers. This adds personality to the pub while celebrating the building's industrial past.



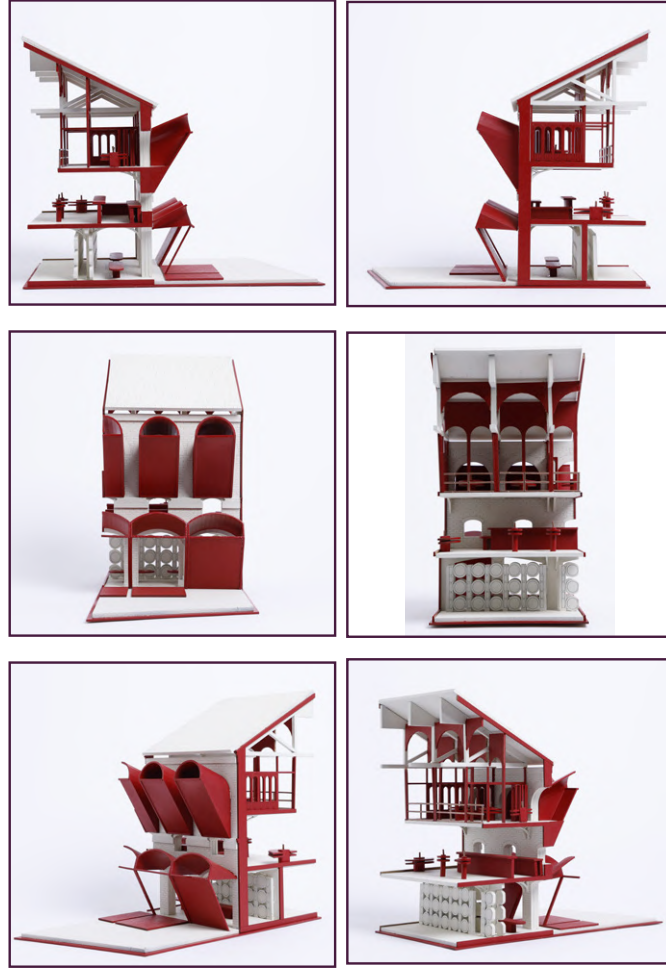
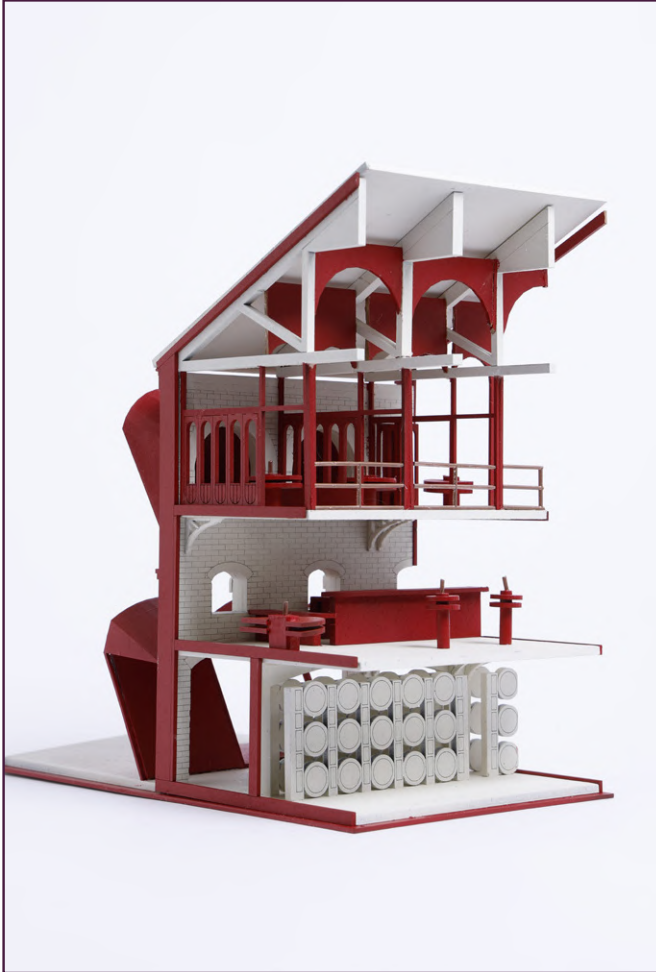
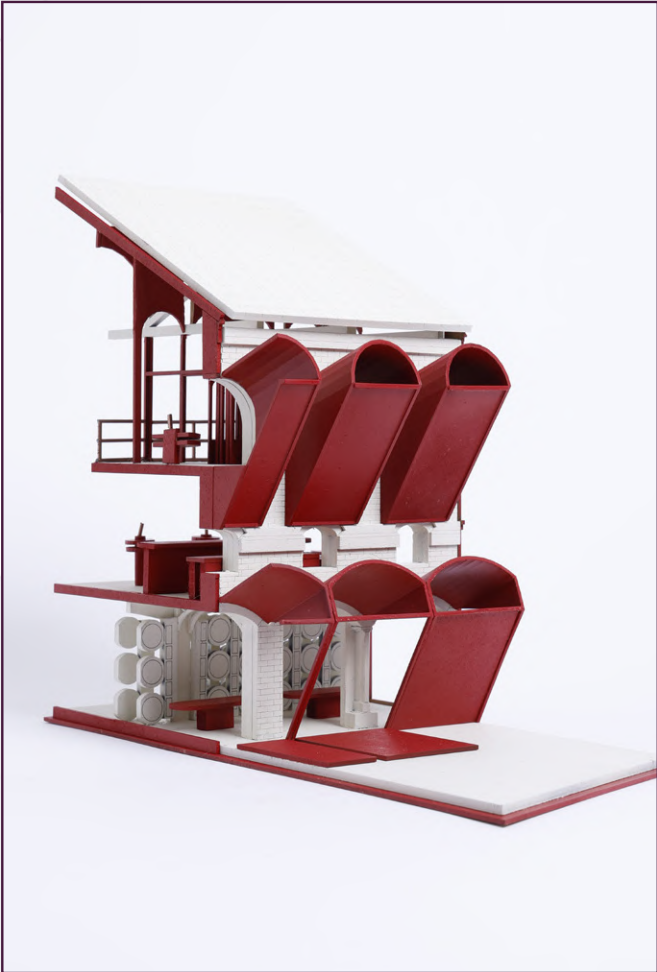
Glass Making Workshop



Glass Making Studio



PHYSICAL MODEL



This sectional model highlights a part of my building that best represents the design typology used on the site. The main purpose of the project is to create a space where the community can come together, share drinks and engage in conversation. The booths above facilitate the recording of these conversations, helping preserve memories that might have otherwise been lost amidst the rapid gentrification of the area.



Capturing Community Heritage

Recording conversations preserves the history of the area that might not be documented elsewhere. By capturing voices and stories of local people, these recordings strengthen community identity and foster continuity across generations. This promotes a heritage shaped and owned by the community itself, ensuring its unique culture, experiences, and memories are passed down authentically.

The shape of the booth amplifies the audio captured in the rooms by creating a megaphone-like effect. The use of cork helps dampen echo and block out external noise effectively. The recorded conversations, stories, and music can be listened to in the booths located on the ground floor and previously stated in the journal.

Section Cut of Recording Booth

