

The Drops Market:

A Community-Led Hub for Cultural Regeneration



The Drops Market is more than a marketplace it's a community-led cultural hub that connects people through shared experiences within the evolving landscape of King's Cross. **It acts as a bridge between past and present**, helping to preserve and reimagine local identity as something living and participatory.

At its heart is a vibrant market hall with local vendors and community-run stalls, supported by a cafe and bar offering cozy corners for pause. A small terrace becomes a stage for informal gatherings, allowing artists and residents to shape the space as their own.

More than a commercial space, The Drops Market serves as a living archive where stories of King's Cross are exchanged through sensory and social interaction. Influenced by the idea of **a museum that listens rather than displays**, the market invites memory-sharing and co-creation.

By adapting to the rhythms of daily life, the market supports grassroots cultural regeneration allowing culture to grow from within and ensuring the voices of the community are celebrated in an inclusive and evolving way.

MANIFESTO POSTER



COMMUNITY THRIVES THROUGH EXCHANGING MARKET HALL

The Drops Market redefines the traditional market as a transformative community hub for creativity, collaboration, and cultural exchange. Rooted in King's Cross, it acts as a living archive where local voices, ideas, and identities are shared and celebrated.

COMMUNITY CAUSE & CONCEPT

Rapid redevelopment in King's Cross is erasing local voices and historic materials. The area's identity is shifting from lived culture to commercial transience. Without spaces for interaction, heritage risks becoming distant and disconnected.

The Drops Market promotes inclusive learning and community engagement, fostering a space where diverse voices, local stories, and cultural knowledge are shared. By supporting social cohesion and active participation, it contributes to building a more just, resilient, and connected urban environment.

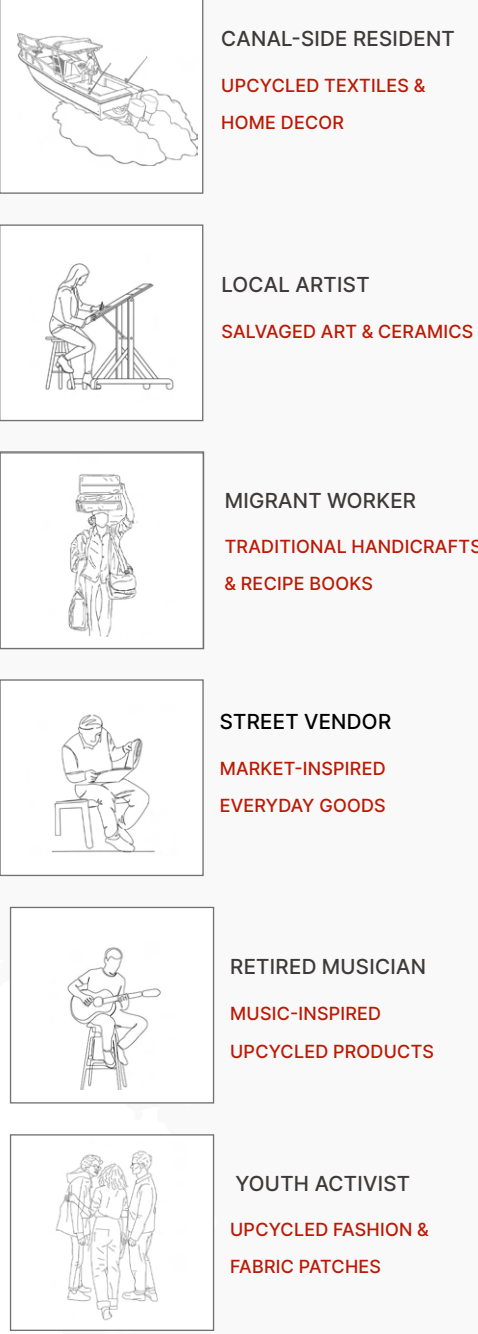


STREET SURVEY



I observed a sharp contrast between polished developments and ongoing social issues. Coal Drops Yard showcases adaptive reuse with its preserved industrial structures, yet nearby canal areas reveal visible homelessness. St. Pancras Square, though publicly designed, mainly serves office workers, reflecting a shift toward corporate control. **This raises a key question: can urban growth truly support community needs, not just commercial success?**

COMMUNITY USER

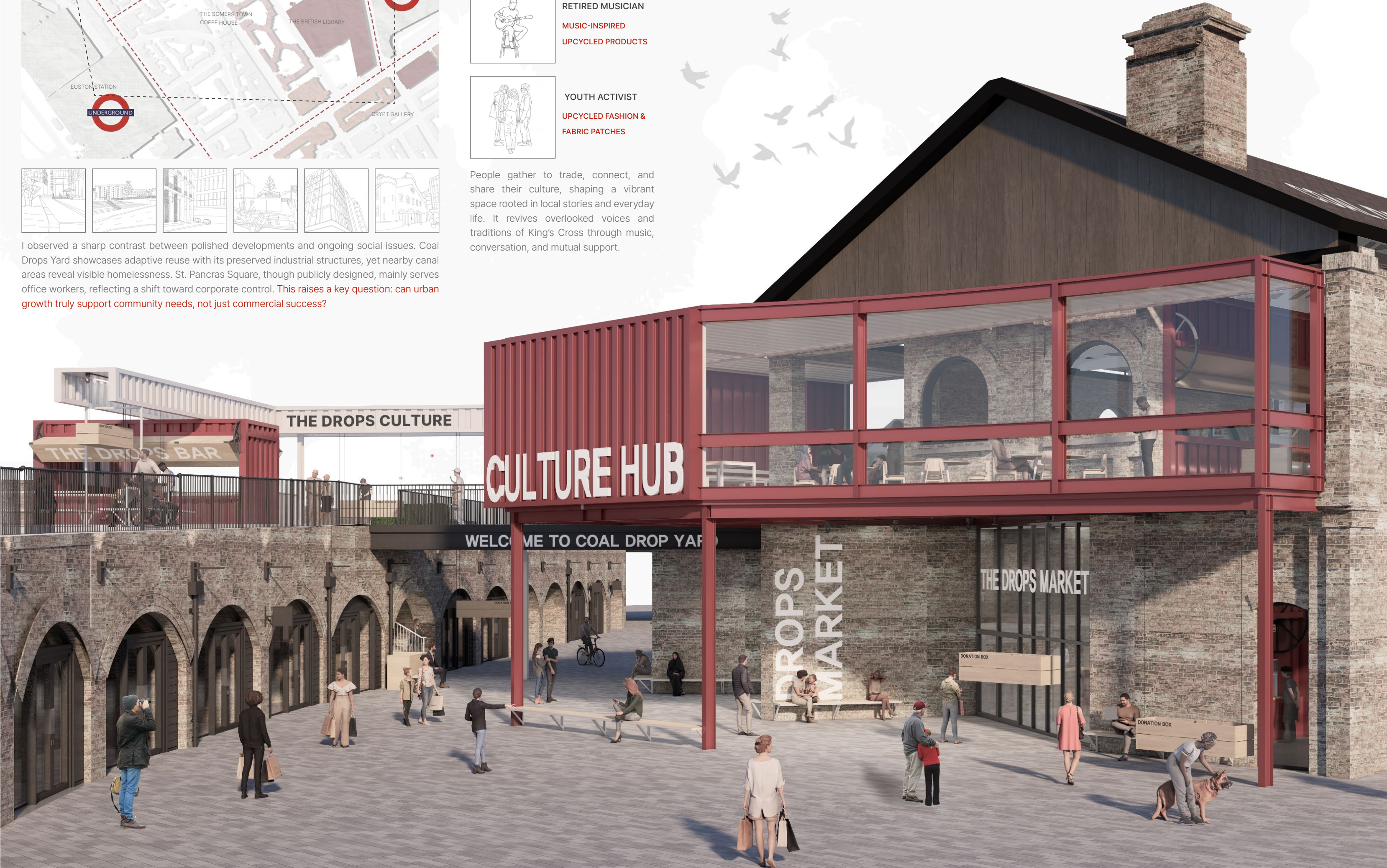
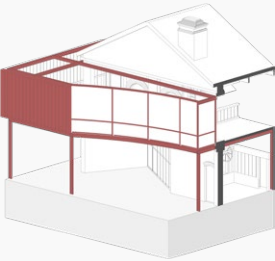


People gather to trade, connect, and share their culture, shaping a vibrant space rooted in local stories and everyday life. It revives overlooked voices and traditions of King's Cross through music, conversation, and mutual support.

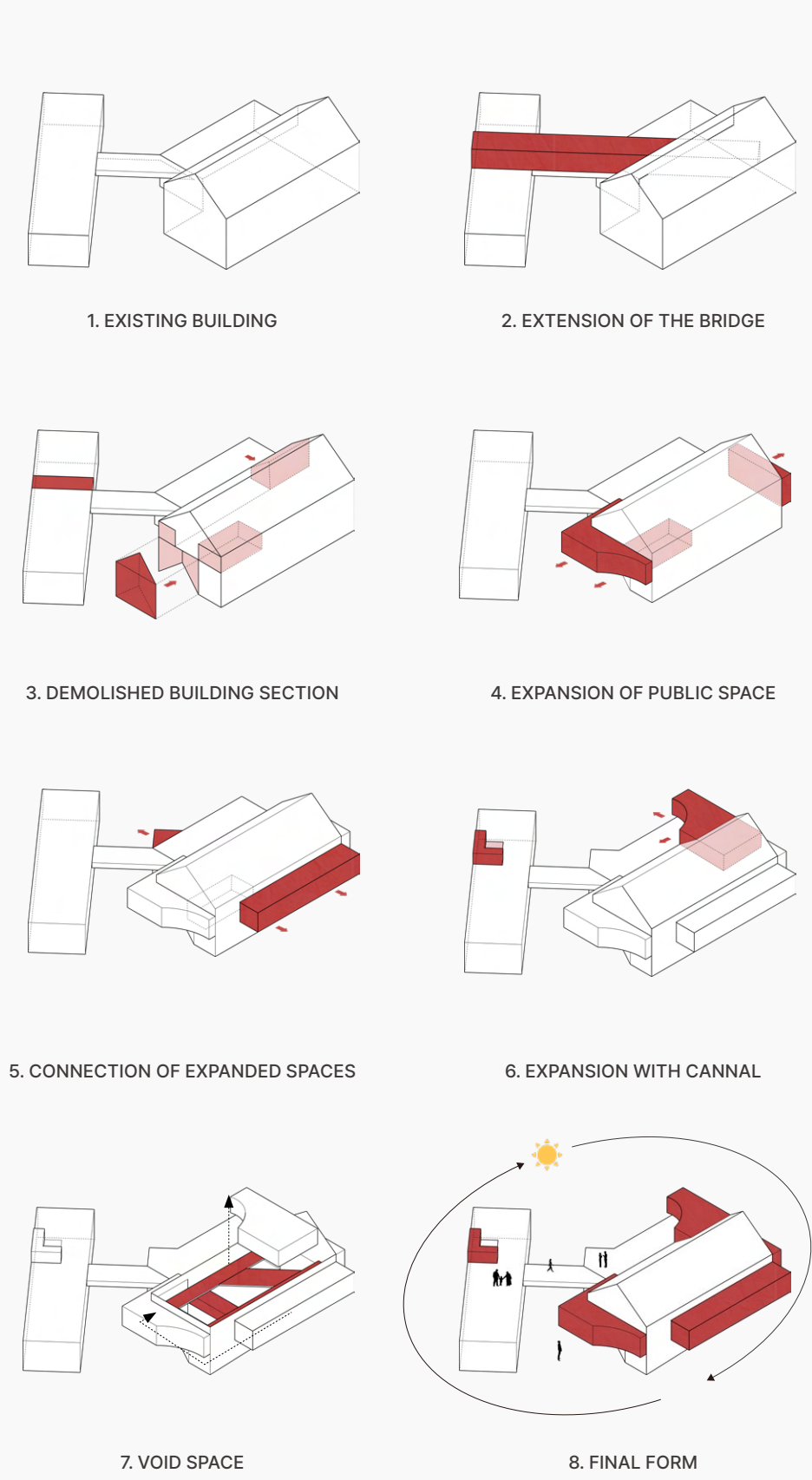
1:50 SAMPLE MODEL



In my model, I explored how recycled containers could extend the existing structure and connect different parts of the space. I revealed the internal devices and exposed the H-beam framework to highlight the structural logic. The model illustrates how the space can be both connected and dismantled.



SEQUENTIAL DIAGRAM

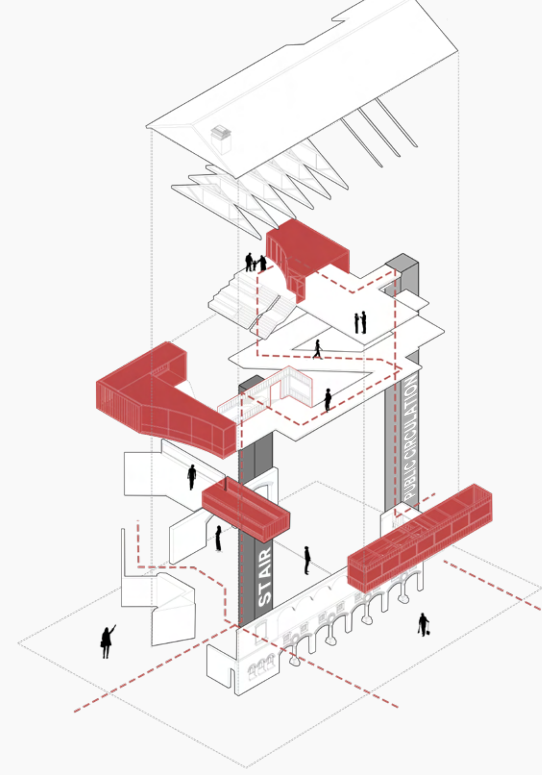


MAQUETTE MODEL



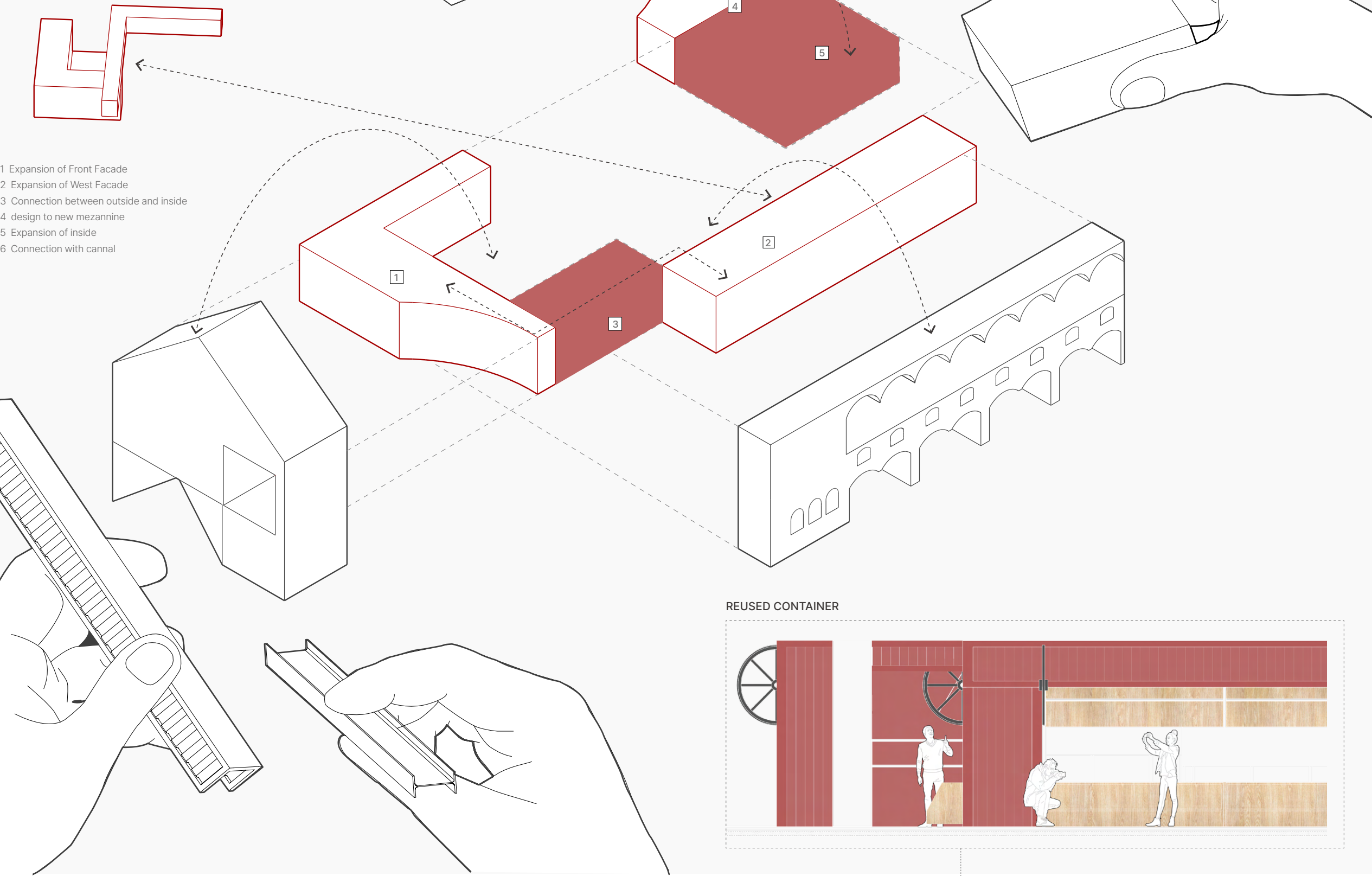
I analyzed the existing building at eye level to explore how spatial organization could enhance community engagement. Through voids and arched forms, I developed a central activation space to encourage interaction and strengthen user connections.

CIRCULATION DIAGRAM

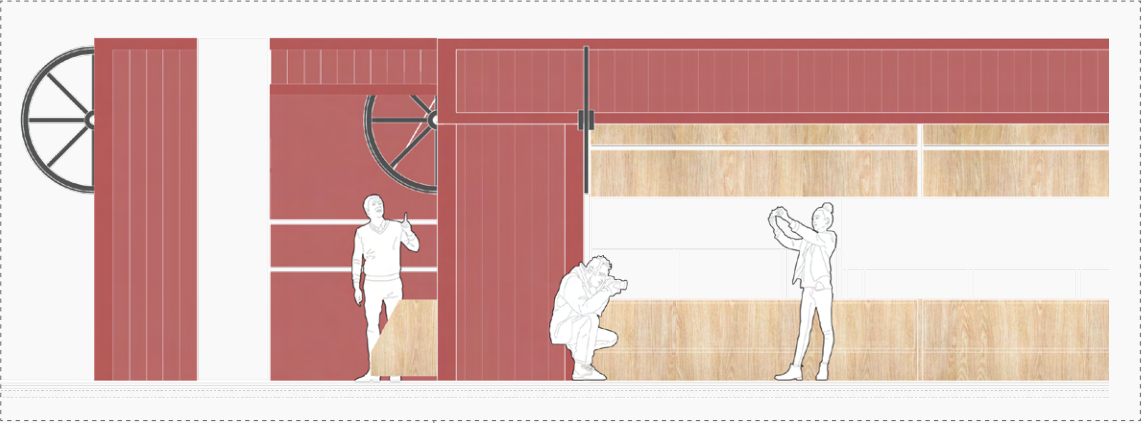


CONSTRUCTION PROCESS

Through the maquette model and diagrams, I explored ways to fluidly connect interior and exterior by creating selective openings in the existing building. This approach guided natural movement and encouraged intuitive engagement while integrating the new design with the old.



REUSED CONTAINER

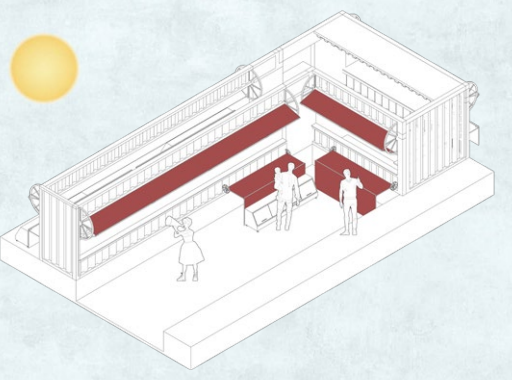


DEVICE AND DETAIL

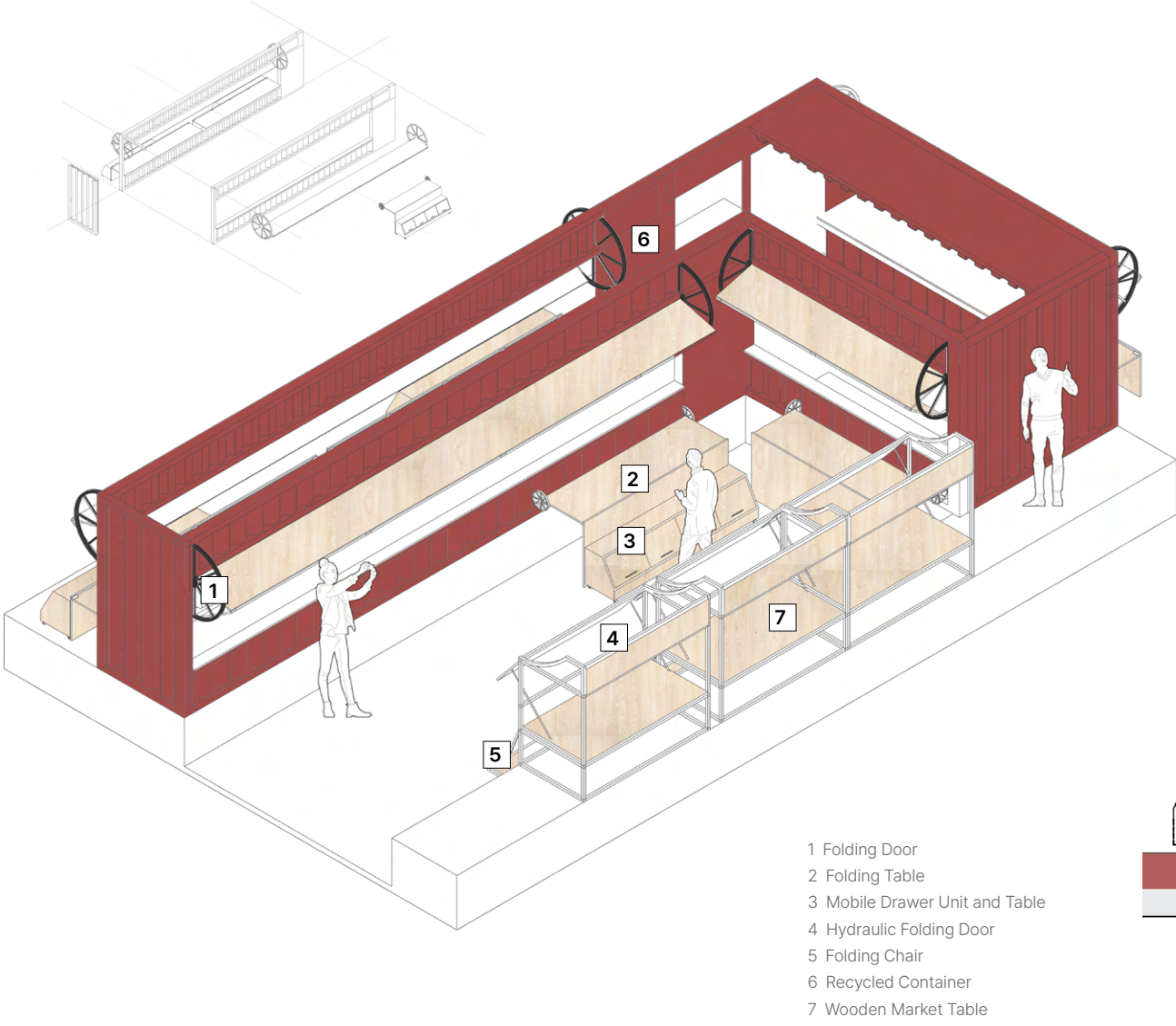
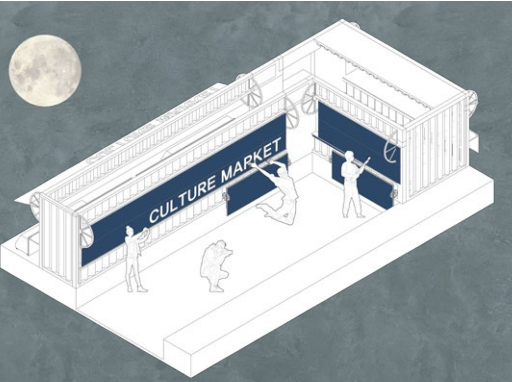
REFOLD UNIT

This device is a multifunctional market unit with a folding structure that transforms its use between day and night. During the day, people can gather and use the tables and chairs, fulfilling the market's primary function. In the evening, the space opens up into a performance venue, maximizing flexibility and utilizing the structural potential of recycled containers.

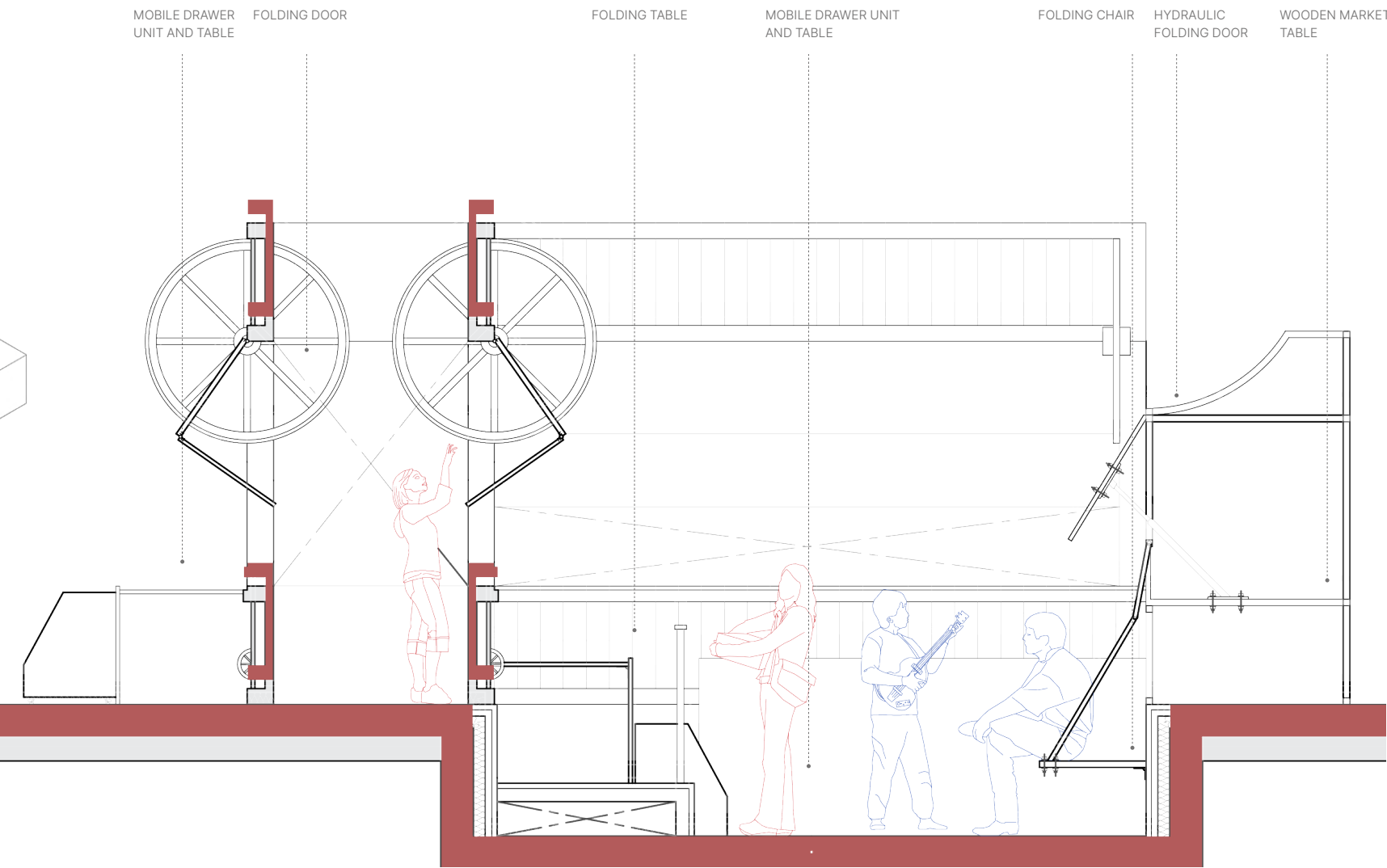
DAY TIME 8:00 - 18:00



NIGHT TIME 18:00 - 22:00



- 1 Folding Door
- 2 Folding Table
- 3 Mobile Drawer Unit and Table
- 4 Hydraulic Folding Door
- 5 Folding Chair
- 6 Recycled Container
- 7 Wooden Market Table



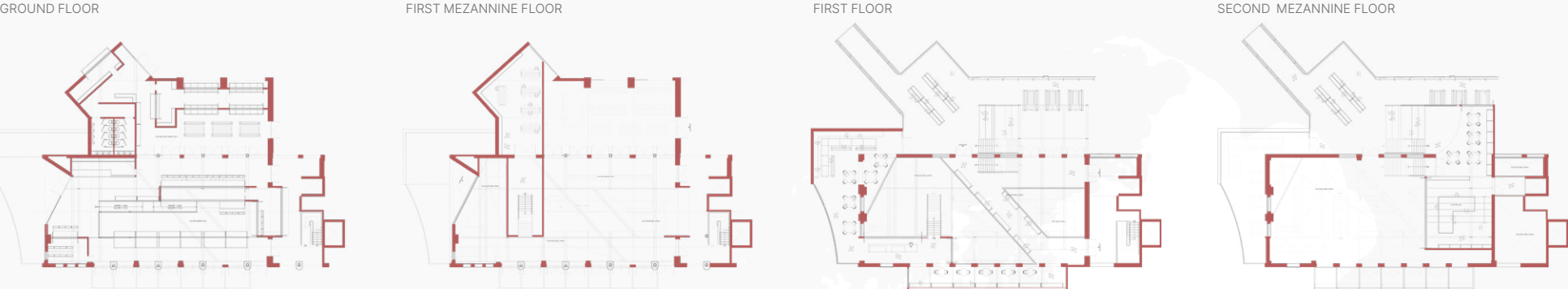
STORY COLLECTION



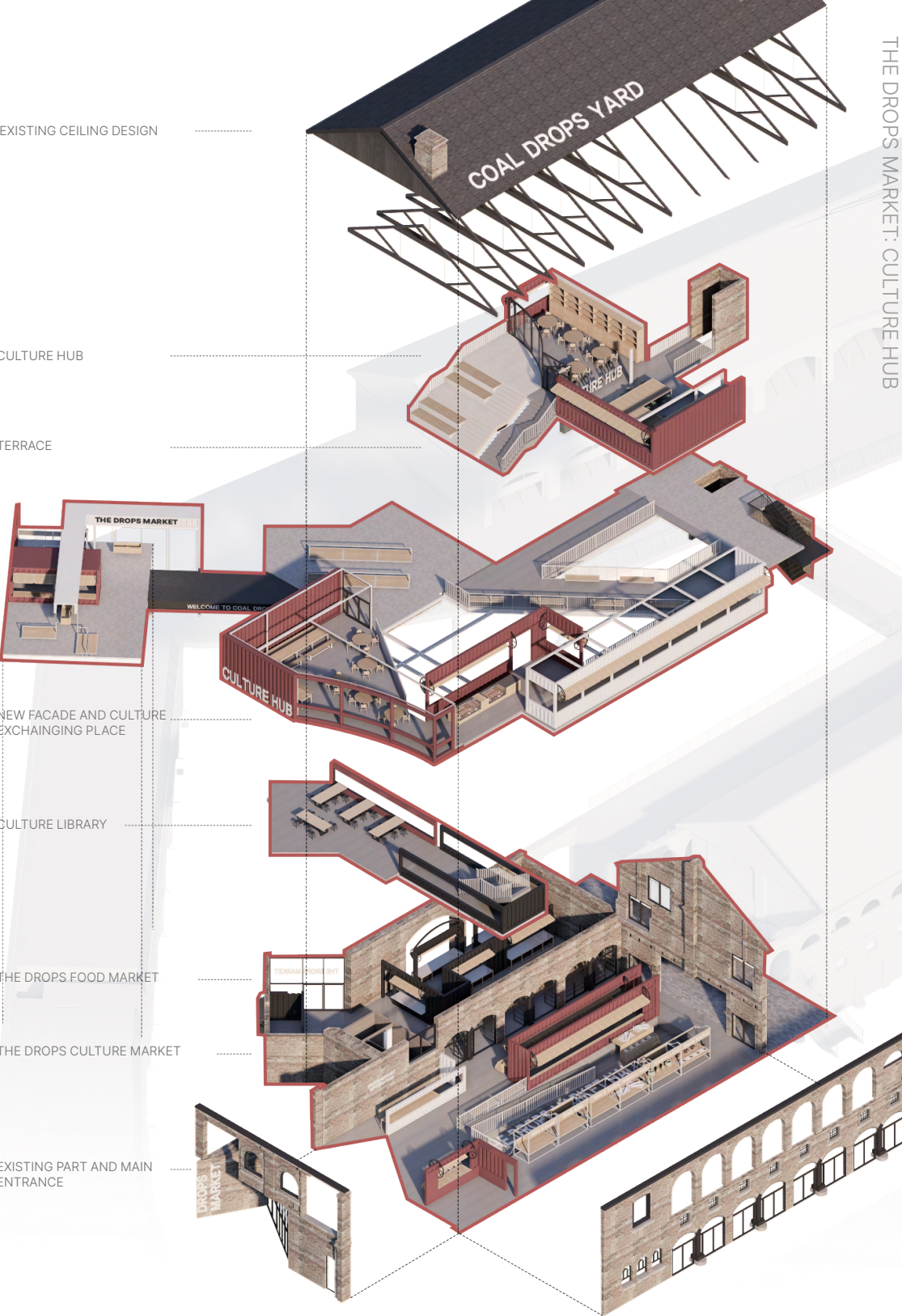
THE DROPS MARKET: CULTURE HUB

THE DROPS MARKET: CULTURE HUB is a community-centered market space where local voices and traces of everyday life come together to form a single scene. More than just a commercial space, it is designed as a place where residents can connect, stay, and share their own stories. Built using recycled containers, the market reflects sustainability and practicality. Foldable doors and furniture allow for flexible programming and adaptable use. The terrace serves as a stage for performances and events a central platform where local artists and residents can co-create culture. Like its name, “Drops,” it gathers small stories that slowly flow together, enriching the local community.

PLAN



AXONOMETRIX DIAGRAM



FACADE

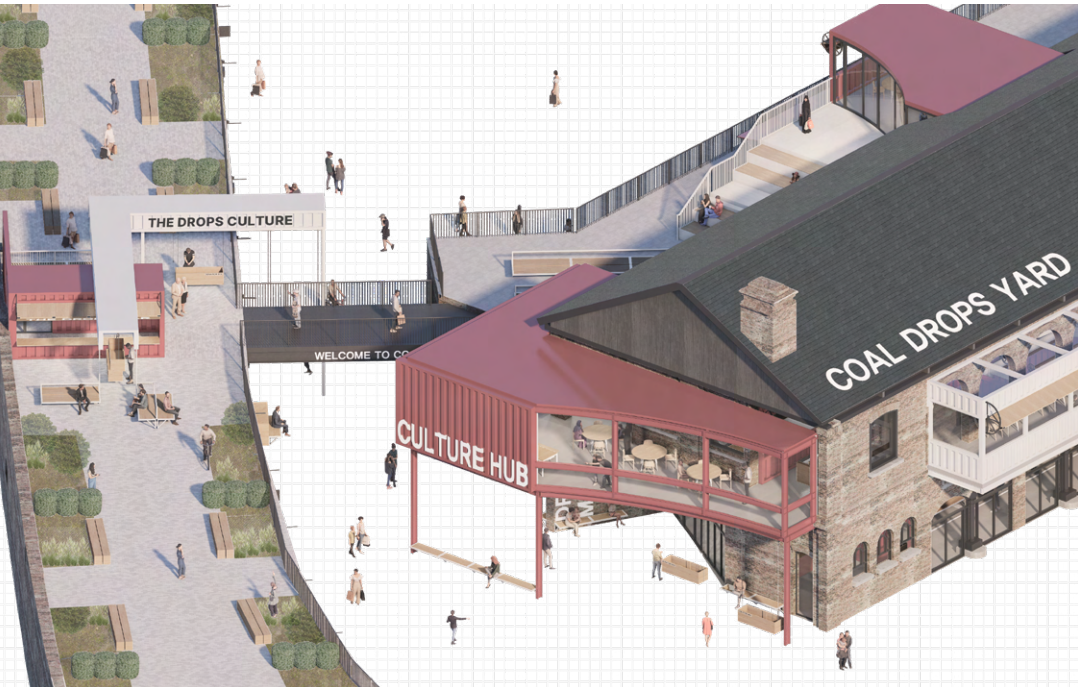
FRONT ELEVATION



ARCH FRONT ELEVATION

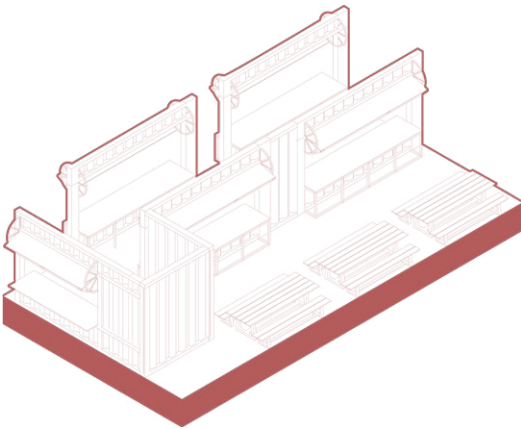


Spatial Strategies



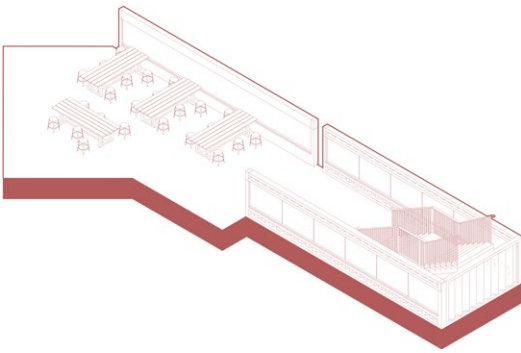
The Culture Food Market

The Drops Food Market is a community-based market built with recycled containers, offering local produce and homemade dishes. With foldable furniture and flexible structures, it adapts to different events. Beyond food, it shares local stories through flavors, creating connections through shared experiences.



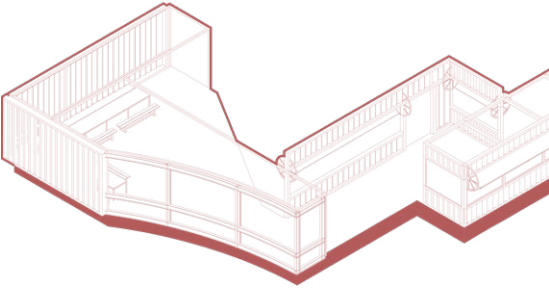
Pocket Culture Library

Pocket Library is a small open book-sharing space made from recycled wood and filled with donated books. Tucked in a quiet corner of the market, it offers a calm spot where people can relax and enjoy stories together.



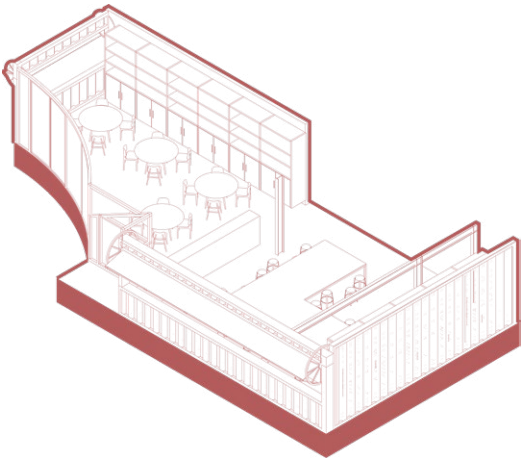
Culture Exchanging Place

Culture Exchanging Place is an open, flexible space for cultural exchange and communication. Movable furniture allows it to adapt to different events, encouraging people to gather, share, and connect in a relaxed setting.



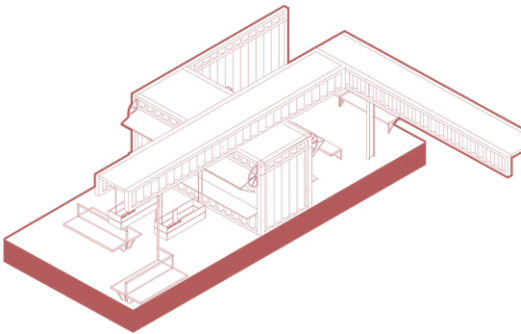
Culture Hub

Culture Hub is a flexible gathering space that supports cultural exchange and creative activities. It invites people to connect through events, performances, and workshops, adapting to the diverse needs of the community.



The Drops Bar by the Canal

The Drops Bar by the Canal is a relaxed social spot where people can gather by the water to enjoy drinks and conversation. Its open layout and recycled container structure create a casual atmosphere that connects the market with the canal.





The Culture Market is a place for sharing and re-selling cultures and stories, fostering connection. A gentle circulation leads to a central area for performances. Folding doors and chairs let users shape the space freely, adapting from day to night. Culture is not fixed but shaped by those who use the space.

The space uses recycled shipping containers, reclaimed wood, and exposed H-beams for a clear structure. Salvaged bricks form soft arches, evoking memory and blending old and new, aligning with Coal Drops Yard's industrial character while reducing waste.

- 1 THE DROPS CULTURE MARKET
- 2 THE DROPS MARKET PATHWAY
- 3 THE DROPS MARKET ENTRY
- 4 THE DROPS MARKET WITH CANAL
- 5 CULTURE HUB
- 6 POCKET CULTURE LIBRARY
- 7 THE DROPS FOOD MARKET
- 8 CULTURE COMMUNITY PLACE

MATERIAL



PUBLIC PLACE



EAST ELEVATION



WEST ELEVATION

The outdoor plaza connects gently to the main building through the café and bar, guiding people toward the canal via an existing bridge. This continuous flow supports SDG 11 and 12 by creating an inclusive, sustainable public space rooted in local culture. Rather than demanding attention, the space quietly supports everyday life and community through small shared moments

