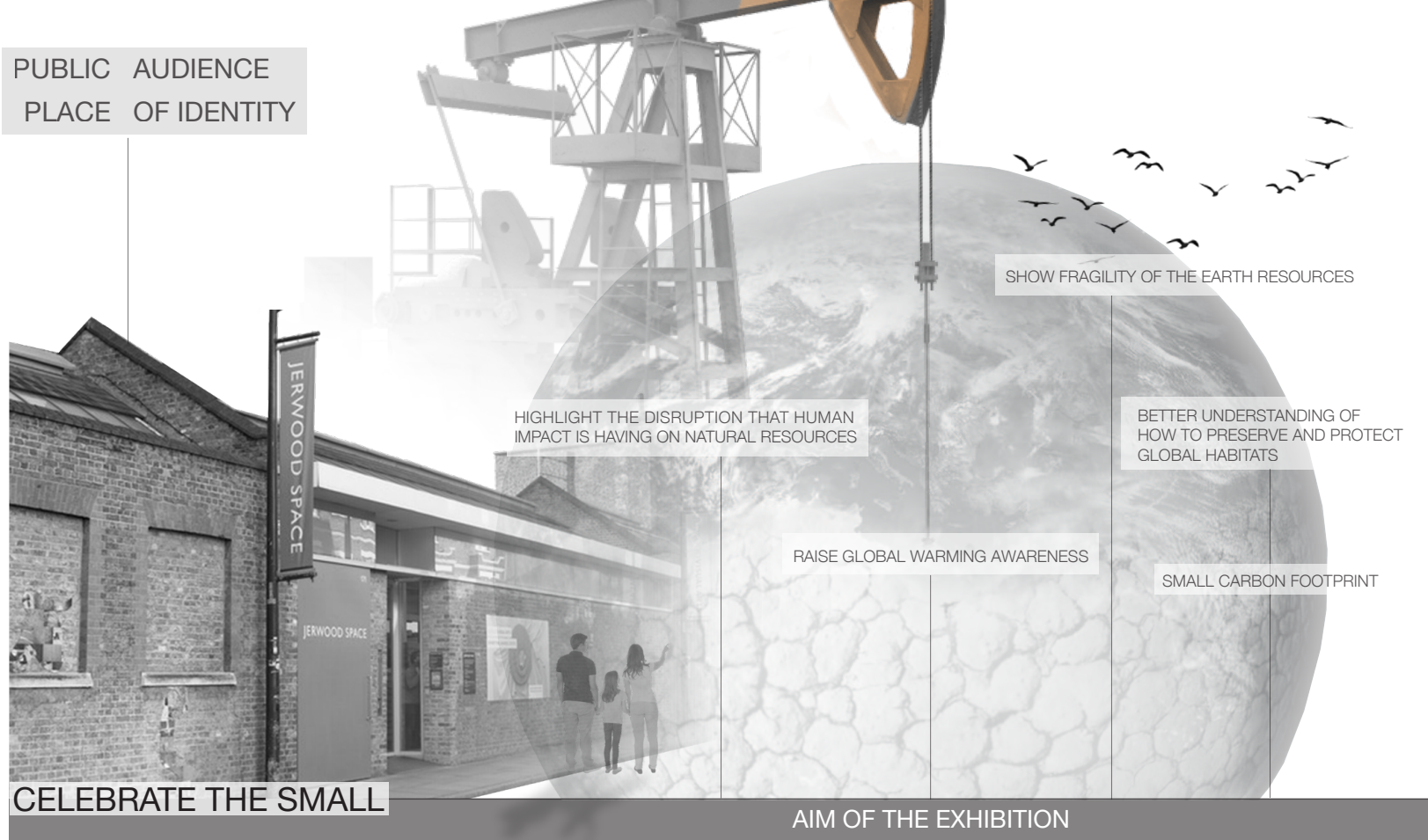
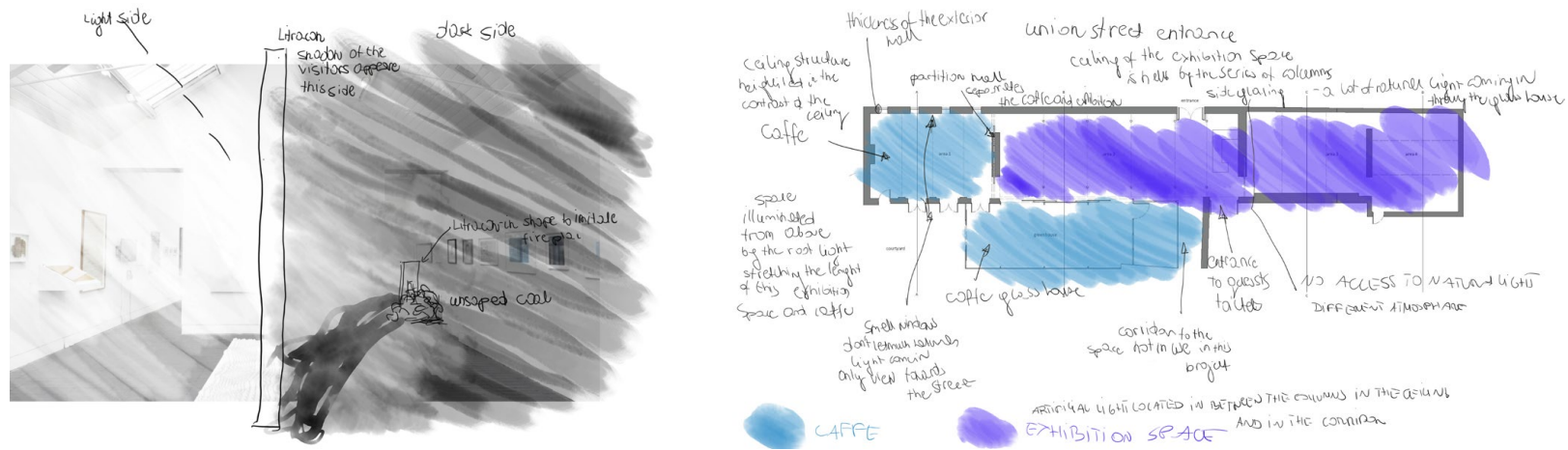


CELEBRATE THE SMALL\_



BRIEF:

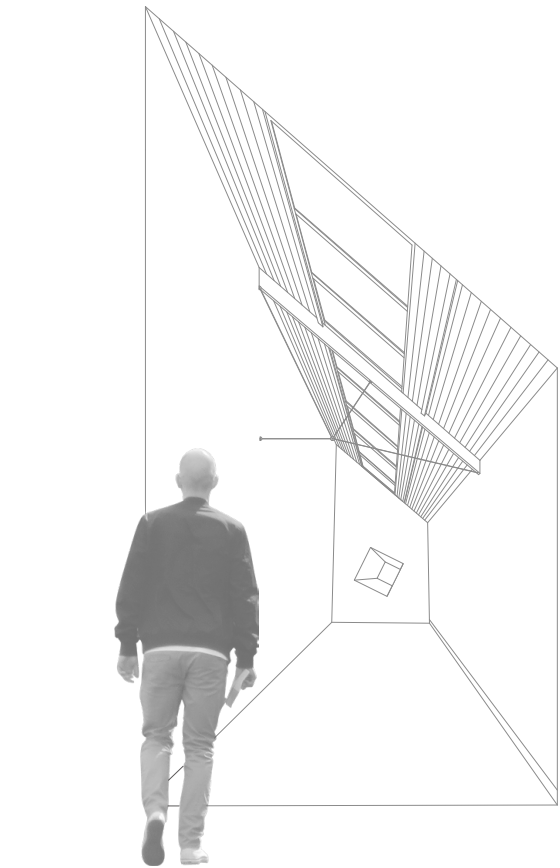
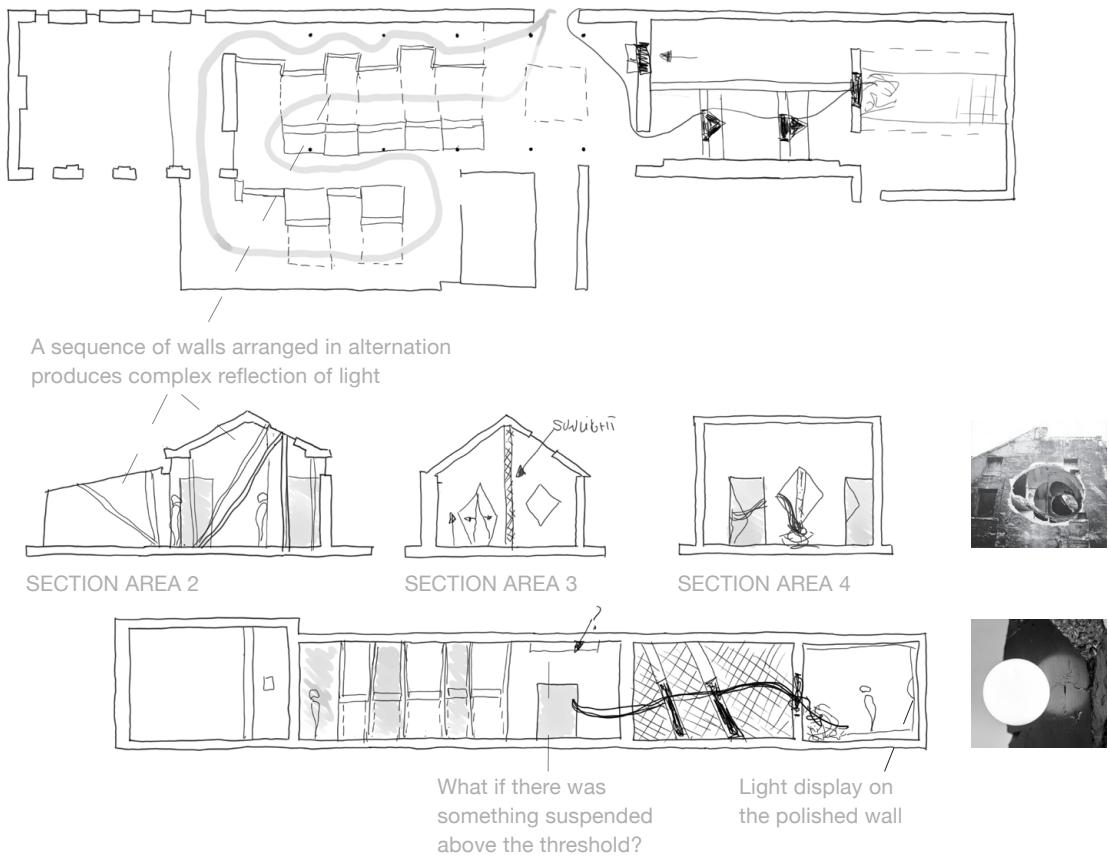
This project focuses on designing an exhibition space to raise public awareness of the fragility of the Earth's resources and highlight the disruption. The aim is to give the visitors a greater understanding of the need to protect it. The exhibition should celebrate the works of the artists, who are focusing on ideas that in some way leave a small carbon footprint.



Initially I was exploring the potential of ambient light and smoggy atmospheres through early models - an experiment with a salt water tank initiated the concept of using light reflection in part of the exhibition. Whilst the display of the objects was important I wanted to also allow the audience to reflect upon themselves.



CELEBRATE THE SMALL - FOLLOW THE SMOKE



Massive sharp coal evokes shock and disruption



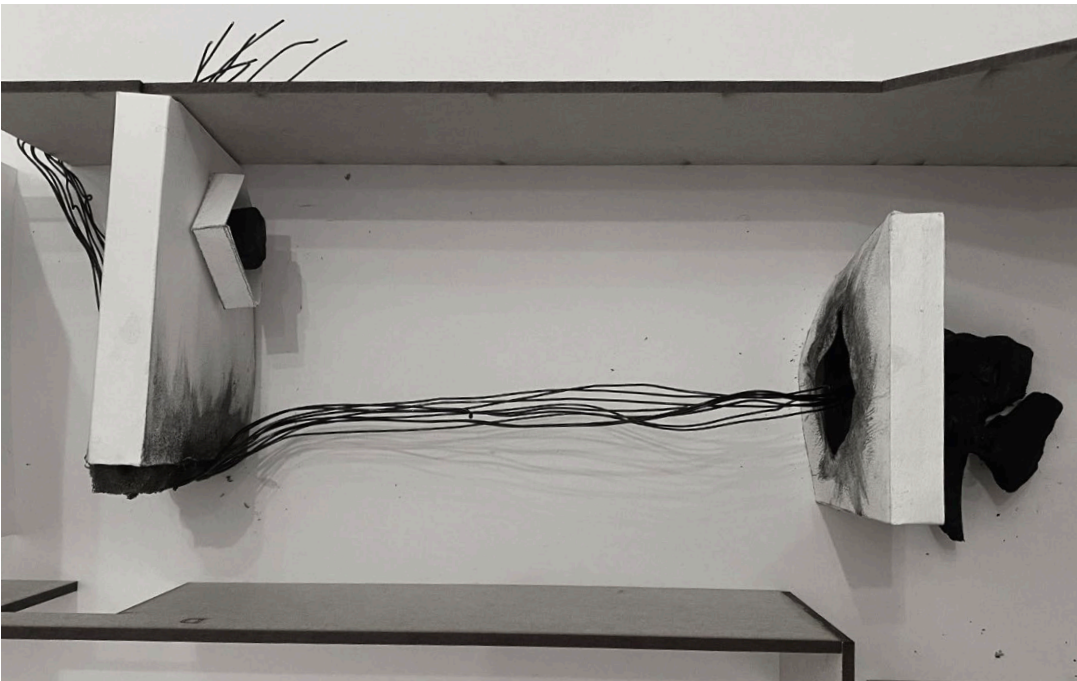
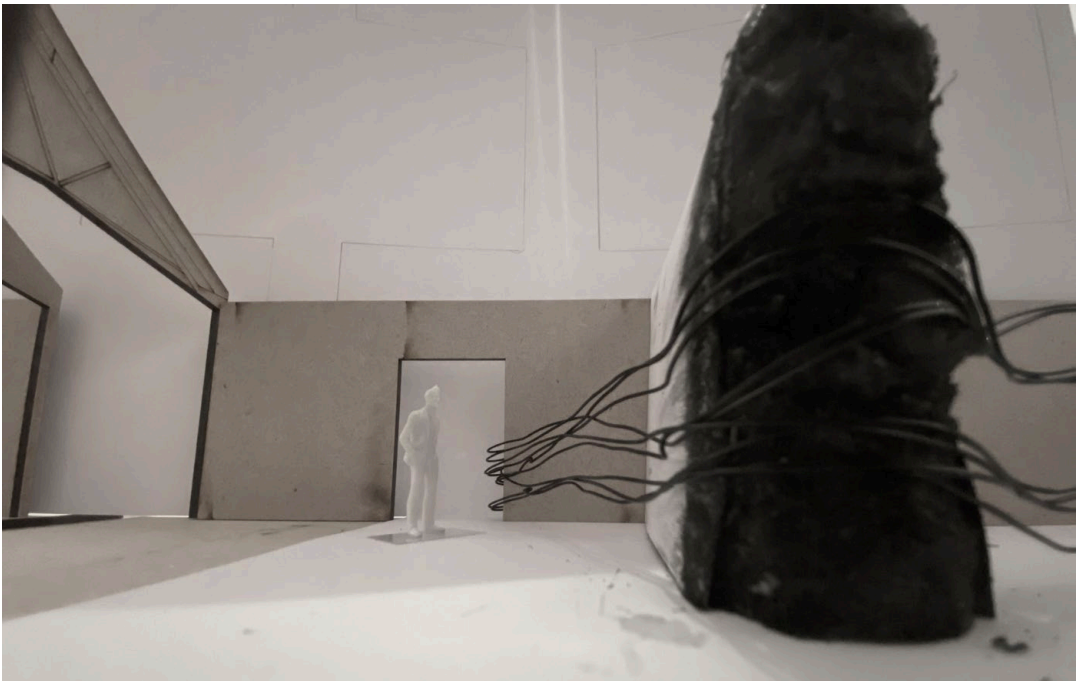
Impact on senses provokes collective memory



Lucidity encourages visitors to lurk in



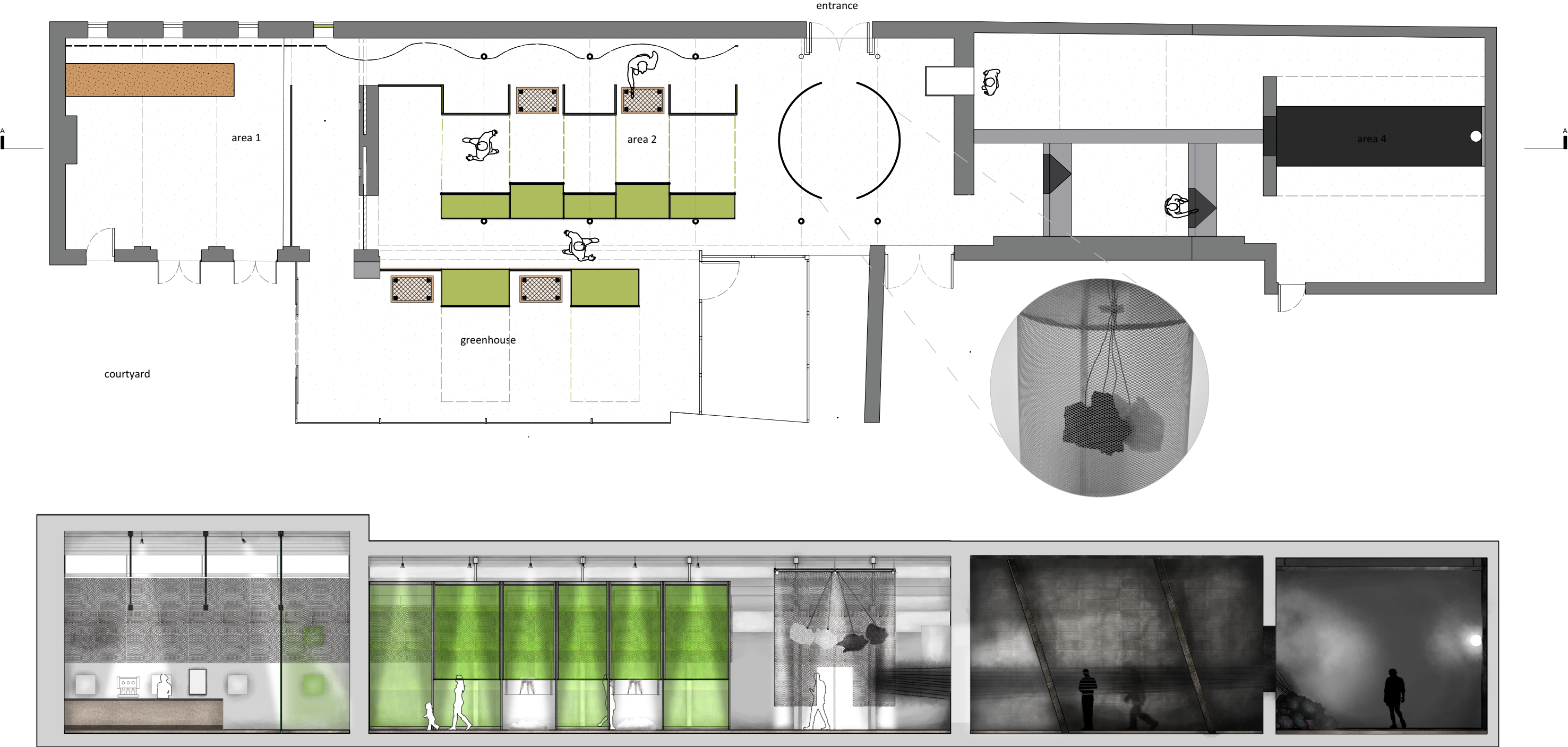
Fractured pieces impose personal reflection



Part of the entrance and threshold resemble smoke coming out of a fireplace, it encourages people to follow it to see where it is coming from. Black-coated steel cables imitate smoke emerging from the coal, it runs through the perforated wall and interior, then escapes past the threshold. There is a display shelf made of a cut-out piece of the wall. It looks like it has physically blown out and landed on the opposite wall, this highlights the disruption of coal to its surroundings when being burned.



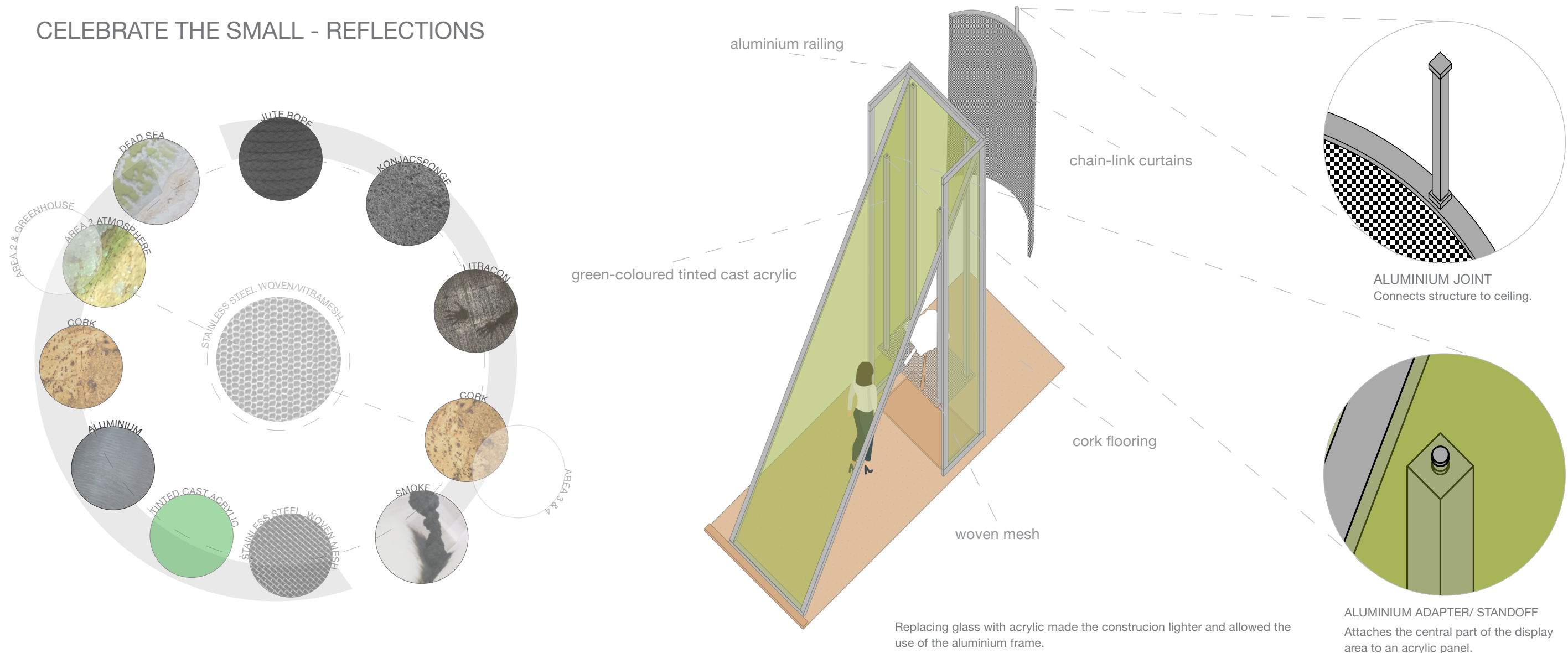
CELEBRATE THE SMALL - LIGHT & DARK



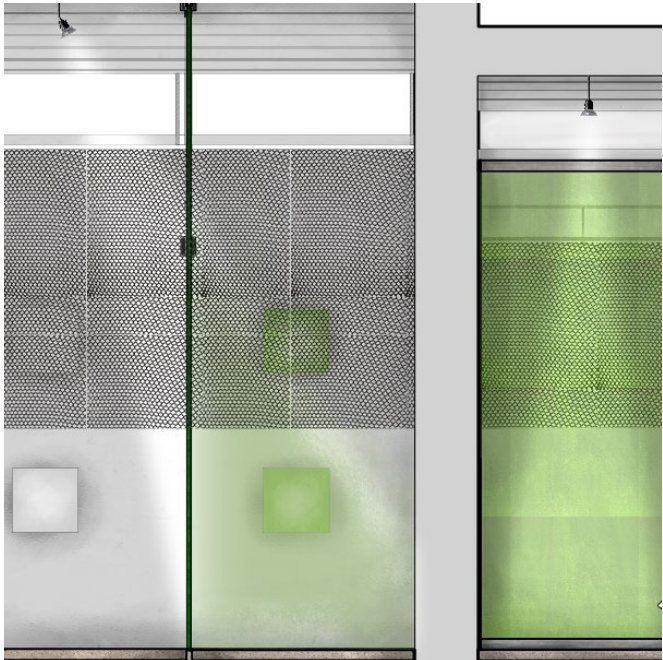
At the threshold and mediation point, chain-link curtains are suspended from the ceiling along with an aluminium base rail to give a bold and dramatic effect drawing your eye upwards. It unites the two juxtaposing ingredients immediately and gives insight into what visitors will see next within the exhibition. There is a structured underpass to choose whether to go through the centre or around it - this acts as a transition between the light and dark.



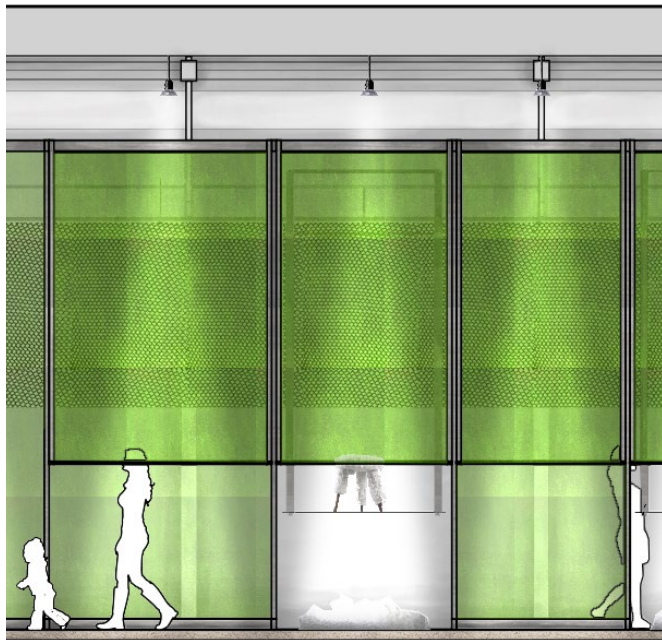
CELEBRATE THE SMALL - REFLECTIONS



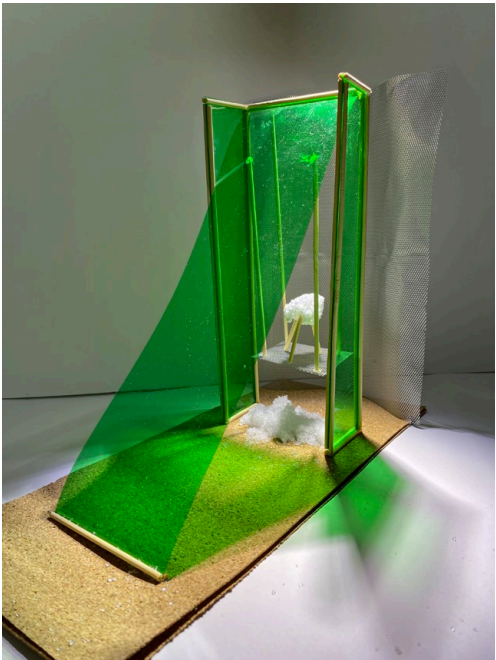
The counter of the cafe, covered with cork, which does not differ from the interior, looks as if it is part of an exhibition.



Spotlight facing the acrylic partition wall gives a green light reflection.



A sequence of acrylic panels arranged in alteration produces complex reflections of light.





CELEBRATE THE SMALL - INTO THE DARK



Litracon lets the light through, so it is possible to observe people's silhouettes on the other side of the mid-zone walls. Konjac sponge installed in the wall looks like soot made by smoke escaping from the coal through the wall. Light display on the polished coal wall reflect and gives a dramatic effect and coaxes people further in.